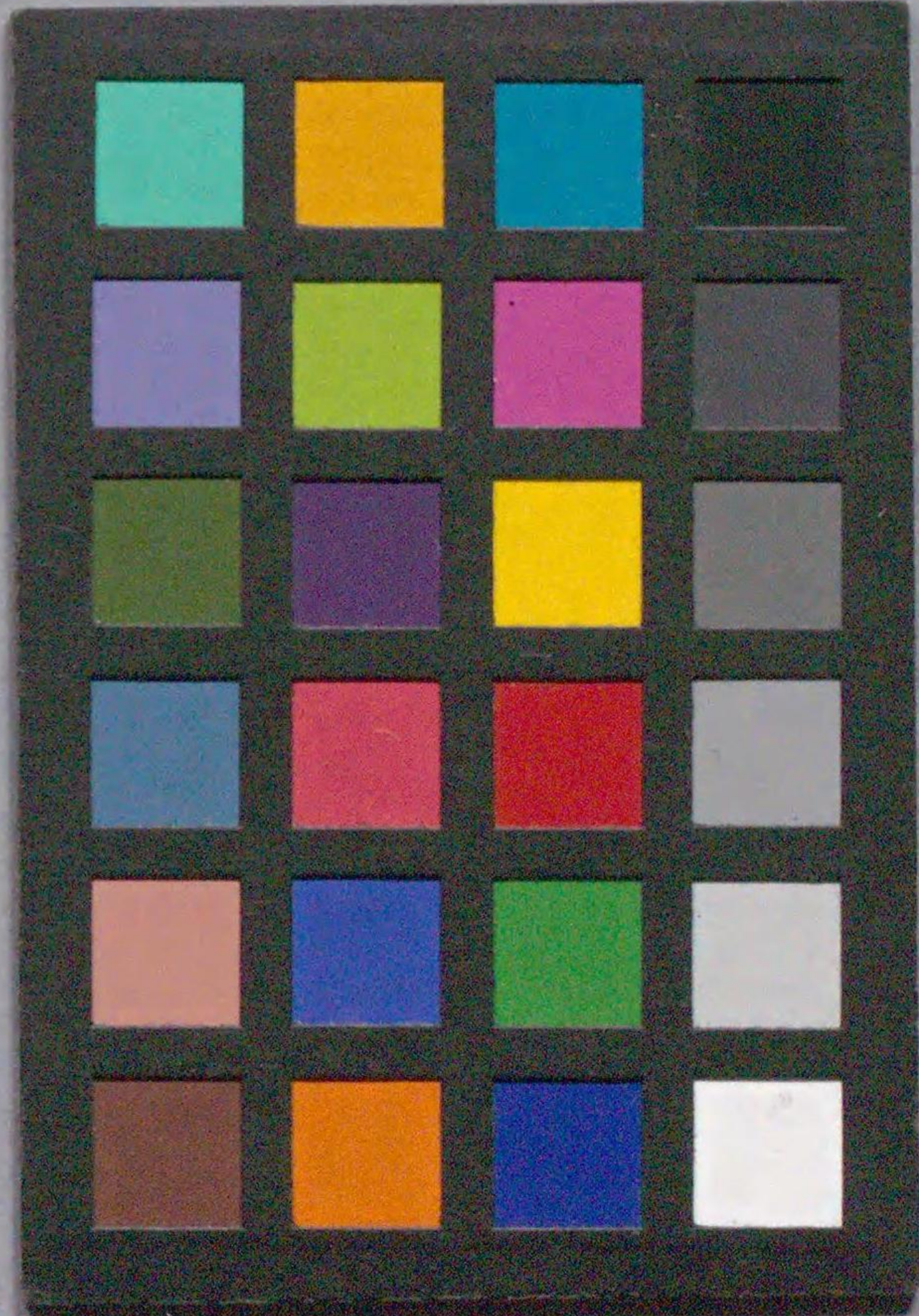
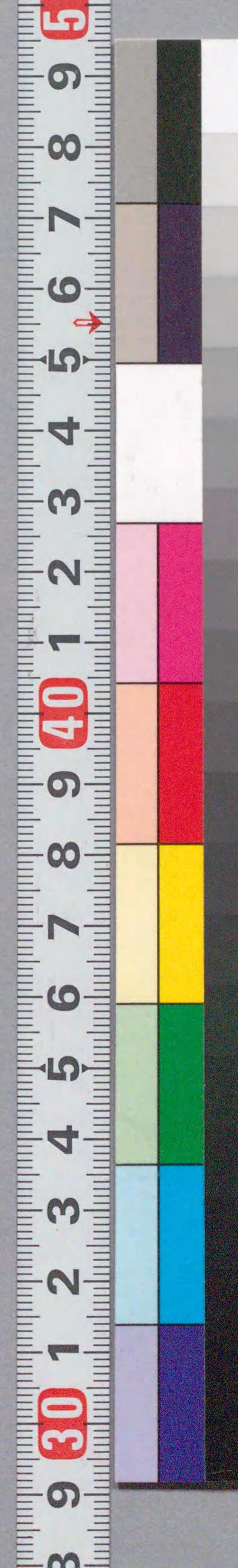


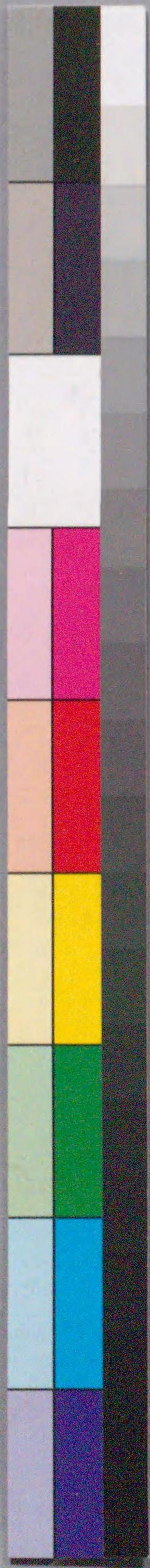


207
928

国立国会図書館 石動丸高野紅葉 3巻 207-928



ガラス使用



今奉

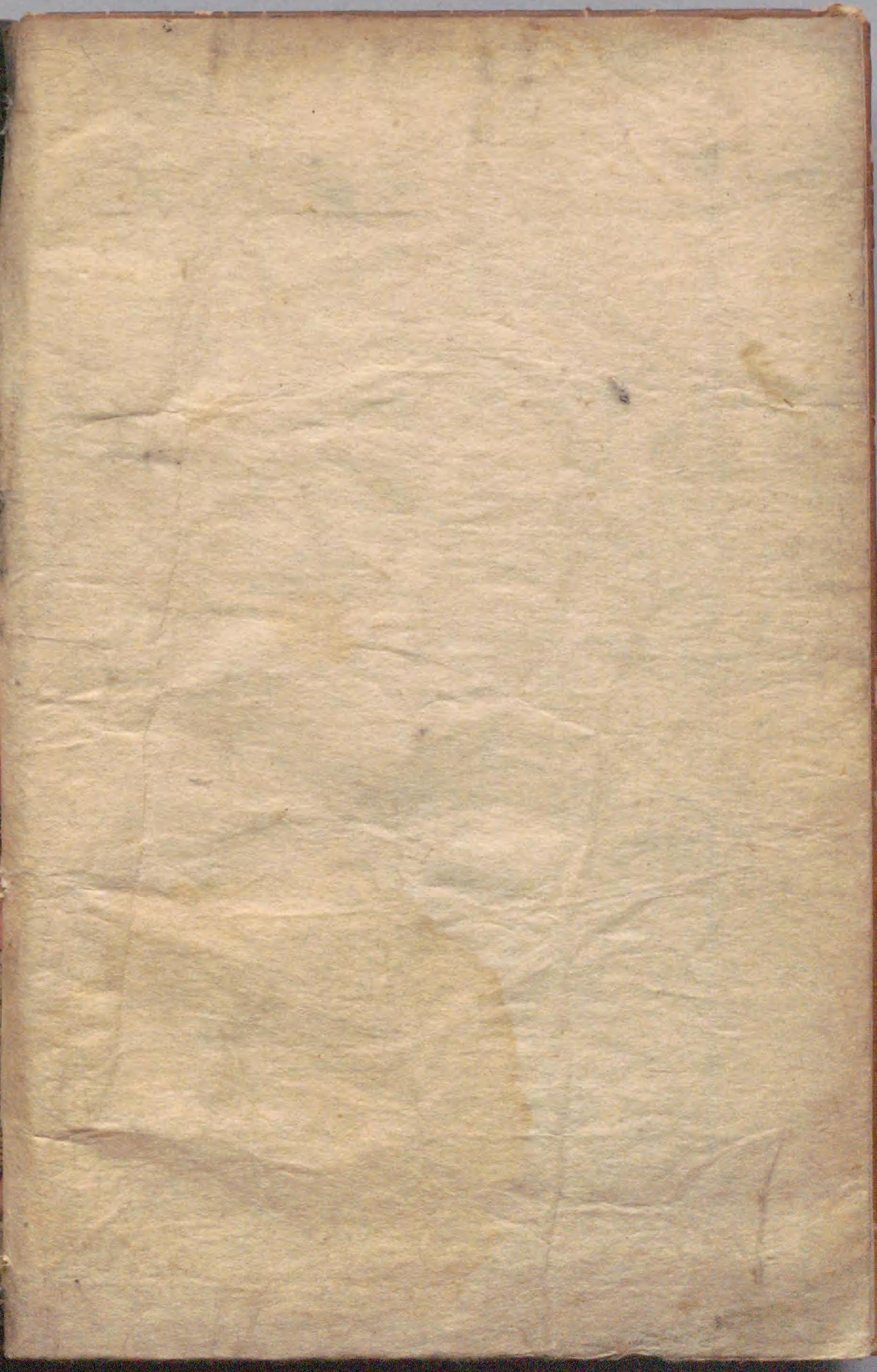
浪石
花丸
酒丸



石動丸高野紅葉

207
928





卷之上



石動丸

高野紅

葉 不乾齋雨聲著
喜多川目磨圖

文化十癸酉
青陽堂發行
全三冊合一卷

錦森堂上木











Handwritten text in vertical columns, likely a narrative or commentary related to the illustration. The text is written in a cursive style (sōsho) and occupies the upper and lower portions of the left page.



Handwritten text in vertical columns, continuing the narrative or commentary from the left page. The text is written in a cursive style (sōsho) and occupies the upper and lower portions of the right page.



Handwritten text in vertical columns on the left page, likely a chapter introduction or commentary. The text is dense and written in a cursive style.



Handwritten text in vertical columns on the right page, continuing the narrative or commentary. The text is dense and written in a cursive style.



文化十年酉年新版

月麿再巻

不乾齋雨聲作



玉のまは
あまのまは
あまのまは
あまのまは
あまのまは
あまのまは
あまのまは
あまのまは
あまのまは
あまのまは

一冊
二冊
三冊
四冊
五冊
六冊
七冊
八冊
九冊
十冊

不乾齋雨聲作
不乾齋雨聲作
不乾齋雨聲作
不乾齋雨聲作
不乾齋雨聲作
不乾齋雨聲作
不乾齋雨聲作
不乾齋雨聲作
不乾齋雨聲作
不乾齋雨聲作

文化十年酉年春新板合巻目録

重井同娘十代能六冊
山東京傳作
歌川國貞画

石動丸高野紅葉二冊
不乾齋雨聲作
喜多川月磨画

阿花
吾孀花歌妓實六冊
式亭三馬作
歌川國貞画

昔語宮城林夫信二冊
不乾齋雨聲作
喜多川月磨画

於代
庚申侍女房献立五冊
歌川美九画
山東京山作

増補忠臣蔵物談二冊
不乾齋雨聲作
喜多川月磨画

目録之通新板
さし出さる相かきり
歩評あり



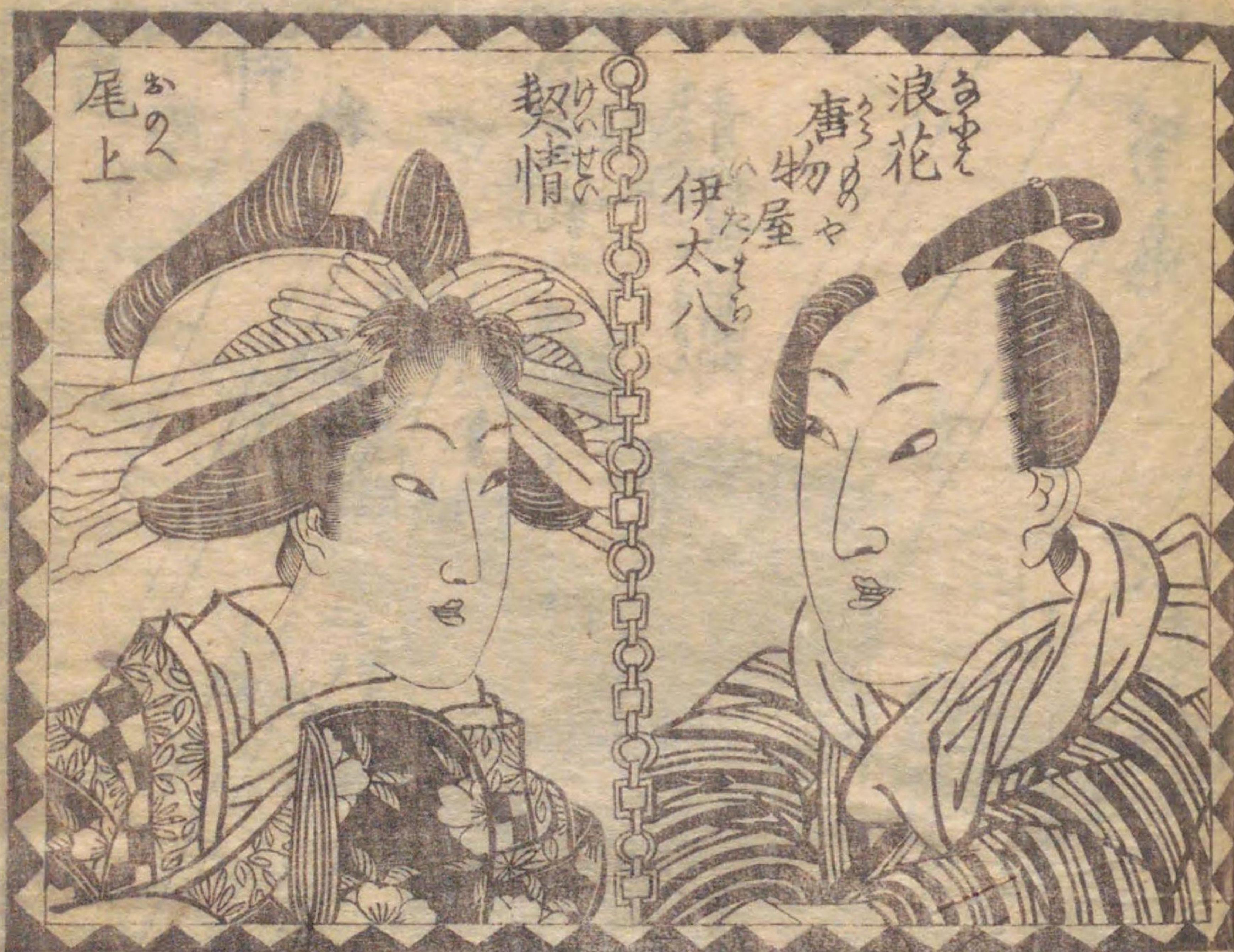
馬喰町三丁目
森屋屋治兵衛板



醉月梅笑作
歌川國丸画

文壽堂





自叙
 神を捜る千寶鬼狐説の東坡
 心もかも風を吹く小舟に飛渡る漢の
 二冊物素より不滅の性もまた
 浄瑠璃本假枕宿物語の如か
 ぶらまゝと勸懲を志すぬたの機
 思ひ次第五割をきこはるるお
 浪花再渡短小のこねるる
 船であふくは魂膽をよるる
 色松の口調小舟の牙を伝ふ
 翻案して文壽堂の書舗小投る

文化九年夏四月脱稿
 今十年春王正月發布

醉月梅笑誌



醉月梅笑作
 歌川園九畫

神田辨庵文橋通

地本問屋丸屋文右衛門

首花瀉死
 辰濤心



Handwritten text in vertical columns, likely a play script or commentary, surrounding the illustration of three figures.



Handwritten text in vertical columns at the bottom of the right page, likely a continuation of the script or commentary.





Handwritten Japanese text in vertical columns, likely a narrative or dialogue related to the illustration. The text is written in a cursive style (sōsho).



Handwritten Japanese text in vertical columns, continuing the narrative or dialogue from the left page. The text is written in a cursive style (sōsho).

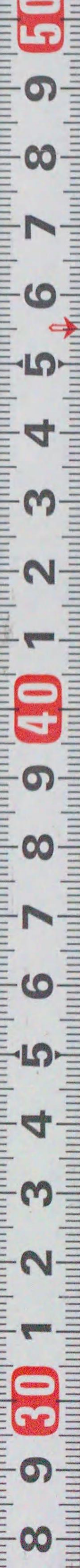


浪花八町(中)細手之景迹



Handwritten text in vertical columns below the illustration, likely a narrative or commentary related to the scene.

Handwritten text in vertical columns at the top of the right page, continuing the narrative.





Handwritten Japanese text in vertical columns, likely a commentary or dialogue related to the illustration. The text is written in a cursive style (sōsho).



Additional handwritten Japanese text at the bottom of the left page, continuing the commentary or dialogue.

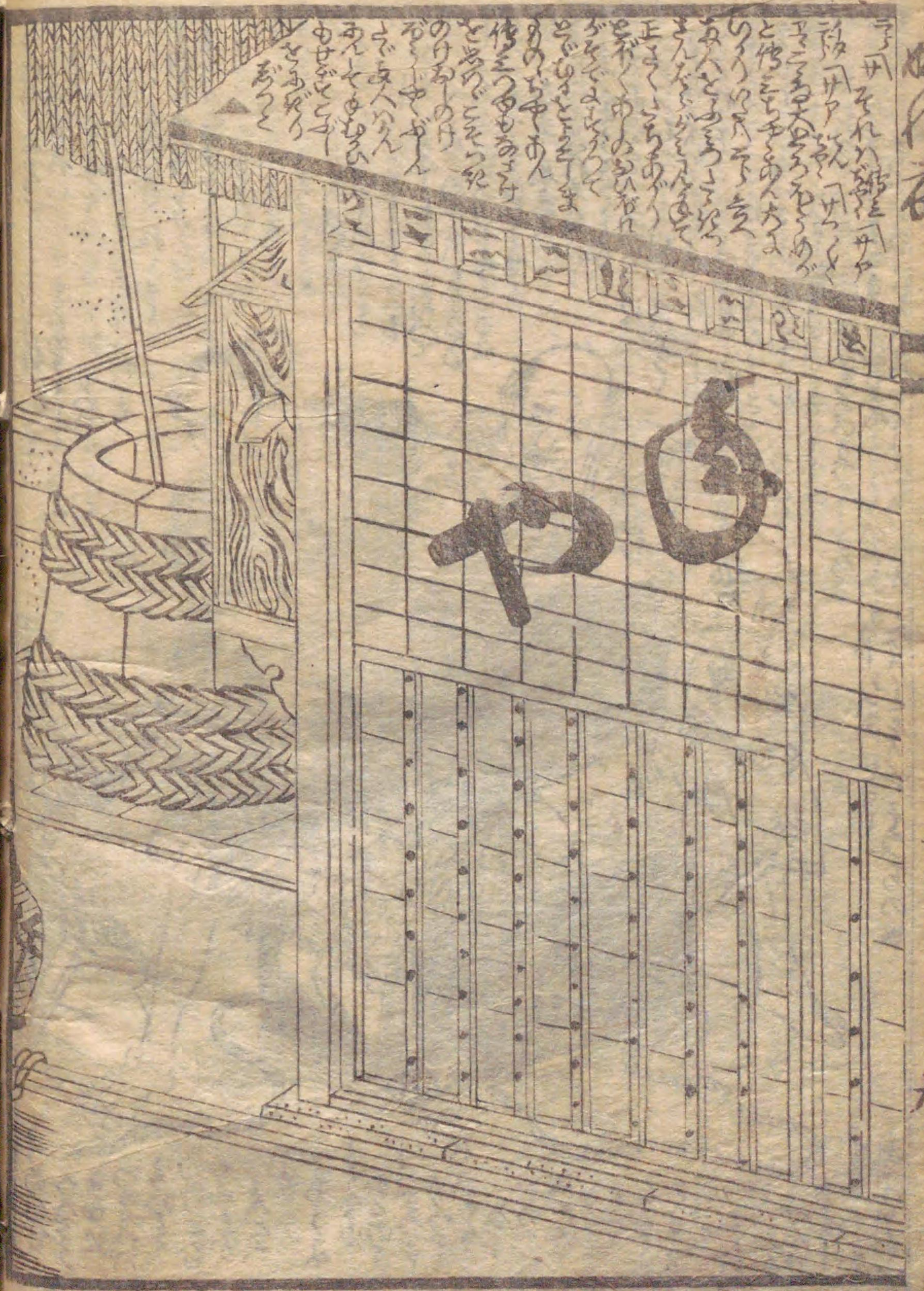
Handwritten Japanese text in vertical columns, likely a commentary or dialogue related to the illustration. The text is written in a cursive style (sōsho).



Additional handwritten Japanese text at the bottom of the right page, continuing the commentary or dialogue.



Handwritten text in a cursive style, likely a commentary or a list of items, located in the upper left section of the left page.



Handwritten text in a cursive style, likely a commentary or a list of items, located in the upper right section of the right page.



Handwritten text in a cursive script, likely a form of Japanese kana, arranged in vertical columns across the top and bottom of the page.



Handwritten text in a cursive script, continuing the narrative or dialogue from the left page, arranged in vertical columns.



Handwritten text in a cursive style, likely a form of Japanese calligraphy, surrounding the illustration of the man.



Handwritten text in a cursive style, likely a form of Japanese calligraphy, surrounding the illustration of the woman.







文 化 十 癸 酉 (文) 新 版 繪 草 紙

<p>右采くのもて後出板意のし中々世平く心江戸神田舟慶稿 活あめ山原のより、松編をきき、文壽堂九屋文右衛門 松が紙同也</p>	<p>新刻増補年代記 両面</p>	<p>浪花湯夜風濡衣 <small>全三冊</small> 歌川國九画</p>	<p>敵華相撲廓建 <small>全六冊</small> 梅暮里谷我作</p>	<p>富士太郎梅の隠家 <small>全六冊</small> 東西庵南北作</p>	<p>三人長兵衛巖田忠の字 <small>全八冊</small> 歌川國貞画</p>	<p>女西行 <small>全八冊</small> 山東京山作</p>	<p>男江口 <small>全六冊</small> 歌川國九画</p>
---	-------------------	---	---	---	--	---	---

萬 華 編
 和合
 歡樂
 之圖

昔鹿子振袖雛形
 薄化粧垣根卯花
 袖頭中梅之隱家
 右不殘出版
 中の向の糸
 ソ使んま
 已上

國九画

醉月梅笑作

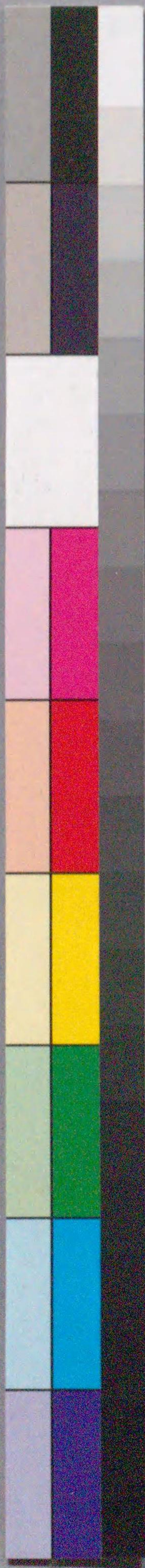
207
928

国立国会図書館 石動丸高野紅葉 3巻 207-928

ガラス使用



207
928





国立国会図書館 石動丸高野紅葉 3巻 207-928



ガラス使用

