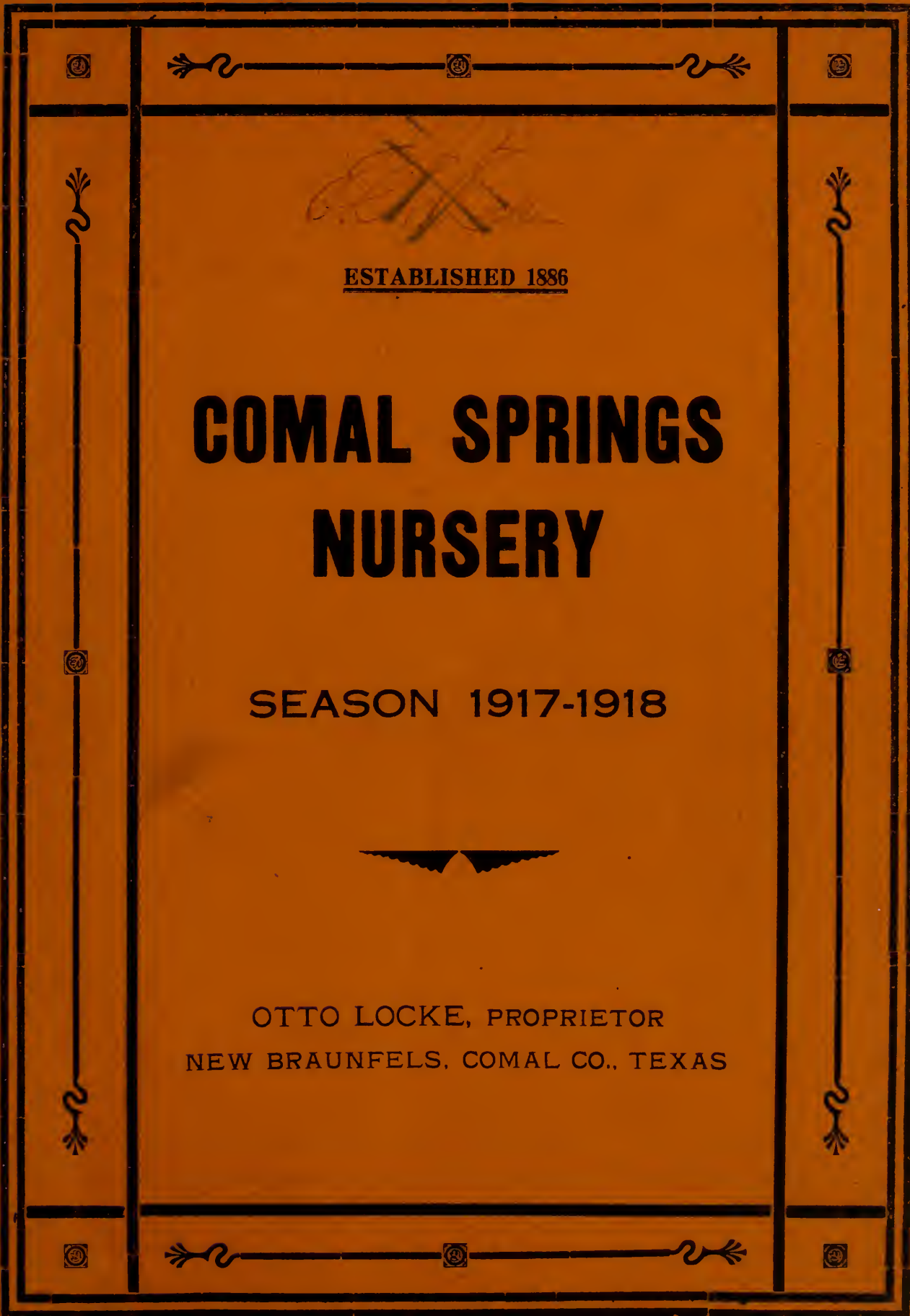


Historic, Archive Document

Do not assume content reflects current scientific knowledge, policies, or practices.



ESTABLISHED 1886

COMAL SPRINGS NURSERY

SEASON 1917-1918



OTTO LOCKE, PROPRIETOR
NEW BRAUNFELS, COMAL CO., TEXAS

PLEASE READ CAREFULLY BEFORE ORDERING.

WHEN ORDERING write your order plainly on the order sheet found in this catalog, and make perfectly clear what is wanted.

FILLING. Orders are filled as soon after reception as possible. Should at the time the order is received the supply of a certain variety be exhausted, and no substitution be allowed, the order will be filled only as far as assortment allows.

MISTAKES are made by us as well as anybody else, but we always cheerfully correct them if they are reported.

PACKING. We bear all cost of packing. We pack in the very best manner and all goods packed by us can safely be sent all over the American continent. Good packing pays us and pays our customers. Everything is labeled.

SHIPPING. We deliver all goods free of charge at the freight or express office of New Braunfels; after that they are out of our hands, beyond our control, and we are not responsible for any mishaps that may occur to them on the road. Please always state plainly to what point you wish the goods to be shipped, and whether you wish them sent by freight or express. We would, however, advise everybody to order by express, as in many cases it is cheaper than freight, and, besides, express takes only from one to four days, while freight takes from one to three weeks to reach you, and stock may suffer if it is on the road too long.

TRANSPORTATION CHARGES are not paid by us, but we put trees and plants in free of charge to about cover the amount you pay for expressage. If, however, customers wish to get the goods laid down at their nearest express office prepaid, we will gladly send them that way, if full amount is sent for transportation charges.

TERMS: INVARIABLY CASH WITH ORDER. No plants sent C. O. D. Our prices are too low to allow any deviation from this rule.

SHIPPING SEASON begins November 1 and extends to March 15.

NO AGENTS. Please notice that we have no agents to call on you and solicit your orders. This book is our sole agent.

GUARANTY. We exercise the utmost care to prevent errors and sell our stock only with the express understanding that, should a mistake occur, and any variety prove untrue to label, we will, upon proper proof thereof, refund the money paid or refill the order free, but for no sum greater than that originally received.

DISCOUNT. We allow a reasonable per cent. on large orders, and for planting in church, school or graveyards, and in city parks. Write for low rates if stock is desired for such purpose in large quantities.

BEST ASSORTMENT is most successfully secured by leaving the selection, in part at least, to us. We have had years of experience in testing the different varieties, but we desire everyone to have his or her choice as near as possible.

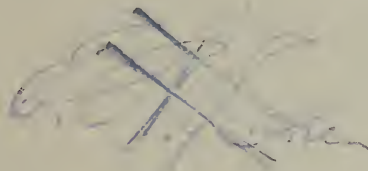
EVERGREENS, ORNAMENTAL AND FLOWERING SHRUBS. We have the largest stock and finest assortment in the South and can please everybody.

WONDER TREES. We do not handle any such as "Tree Blackberries, Never Failing Almonds or Apricots, California Seedling Peach at \$1 each" and other such frauds. It is the province of the traveling tree peddler to supply these rare novelties, they claim exclusive right to such trade, and we grant their claims.

TREES AND PLANTS BY MAIL. Parcels Post shipment will be made at catalog price, with additional charge as follows: 8 cents for each pound for postage. A ten-pound package would cost 80 cents postage.

On packages weighing less than five pounds, postage and packing will be figured in proportion to above charges.

COMAL SPRINGS NURSERY, Otto Locke, Proprietor, New Braunfels, Tex.



Established 1886

Comal Springs

Nursery

Season 1917 - - 1918

Otto Locke, Proprietor

New Braunfels, Comal County, Texas

Greeting.

We take pleasure and pride in handing you our thirty-second annual catalog. Established in 1886 on five acres of land, the nursery business soon outgrew this place, and we now have over a hundred acres in nursery stock.

We have planted more roses and fruit trees this year than ever before; these have made good growth and will be fully up to our usual standard. We have no agents, and do but little advertising. Hence, we have to depend on the quality of our goods to hold our old customers and bring us new ones. A pleased customer is the best advertisement any merchant can have. It is a source of gratification that we still number among our best customers those who bought from us twenty - five years ago. We request all new customers who contemplate putting out an orchard to consult us concerning the selection of varieties, preparation of the soil, fertilization, irrigation etc.

Following are varieties of trees and seeds that have mostly originated here on our grounds and are the results of my long work in horticulture; these varieties having originated here they are best for this section.

Heidemeyer Apple	Honey Nectarine
Strington Apple	McCartney Plum
Comal Cling Peach	Old Favorite Pomegranate
Dixie Peach	Guadalupe Dewberry
November Peach	Bonita Arbor Vitae
Gov. Colquitt Peach	Locke's New Ideal Cucumber
Peerless Peach	California Tomato
Daisy Pecan	Locke's New Triumph Pink
Locke's Pride Pear	Tomato
Summer Beauty Pear	

Years for more and better Texas fruits,

OTTO LOCKE.



Fruit Trees

Apples

Prices: Strong, 5 to 6 feet, 2 years old, grafted on whole roots, 25 cents each, \$2.50 per dozen, \$20.00 per 100.

The apple is not very profitably grown in Southern and Western Texas. There are a few varieties that grow, and only certain localities where these succeed. The latter are in the mountainous regions of Texas and Mexico. The best results are obtained on heavy clay soil. Light or sandy soil must be manured before apples can successfully be grown on same. The apple we grow in our state has a very fine aromatic flavor, more so than that grown in the North, and people who think their soil may be adapted to its culture should experiment with a few trees. Trees grown in the North should, however, never be planted; they will never prove a success.

The following is a collection of those that I have found worthy of planting in the South.

Der Apfel ist nicht sehr profitabel in Süd- und West-Texas und es sind nur wenige Sorten, die gedeihen. Auf den Gebirgshöhen und auf Land mit reichem Lehmboden bringt der Apfelbaum die reichsten Ernten. Ist der Boden leicht und sandig, so sollte tüchtig gedüngt werden. Der Apfel, der in unserem Klima gezogen wird, hat ein sehr reiches Aroma und ist als Tafelobst beliebt. Bäume, die aus dem Norden stammen, sollten niemals gepflanzt werden, da sie nie gedeihen.

Folgende sind die besten Sorten für den Süden.

Hackworth. A new apple from Alabama. We consider it one of the best apples. Ripens for about a month, has a fine flavor and is a very good apple for home market; as large as Ben Davis, not quite so red, and ripens early in July. This variety should be in every apple orchard.

✓ **Kinnard's Choice.** Fruit medium, mostly covered with a dark red, flesh yellow, tender, juicy and aromatic; very hardy and productive.

✓ **Winesap.** Tree a strong grower and productive, fruit of medium size, red flesh, crisp, juicy, high flavored, valuable for table, market or cider. Ripe in October.

✓ **Black Twig.** Tree upright grower, fruit like Winesap, but one-fourth larger.

✓ **Bismarck.** This most valuable New Zealand apple was introduced only a few years ago and the popularity it is now enjoying is proof enough of its great value. It not only possesses high quality, but the tree is very hardy; just the apple for our climate. 25 cents each.

✓ **Yates.** Small size, color red, covered with white specks, quality fairly good; tree bears young and abundantly and holds its fruit unusually well. We consider this one of the very best late apples.

NEW APPLES

35 cents each, \$3.50 per dozen.

✓ **Heidemeyer.** Imported about 1850 from Stuttgart, Germany. Roundish, conical, color golden yellow, flesh yellowish, juicy, aromatic, rich quality, very good to best. Season August, bears heavy crop every year, is one of the best apples for Southwest Texas.

✓ **Stringston.** This new Australian apple has been fruiting here for years, is a fine, large, round summer apple, highly colored to the sunny side, of good quality; the trees bear young and are very good growers, having fruited in nursery the first year; ripens end of July.

✓ **Becker.** This is the only apple that has given satisfactory results in the coast country and does very well here. The tree is a strong straight, upright grower, with very large foliage; bears young and is very productive as a

summer apple, ripening in July; color is yellow with red stripes; flesh well flavored.

San Jacinto. Like a very large Red June apple, of which it appears to be a seedling, coming in just as the Red June goes out. Tree vigorous and prolific; very productive. A variety of the highest merit both for market and table. Fruit hangs to the tree remarkably well and a fine keeper for an early apple. Price 25 cents each.

Crah Apples

Price, two-year-old trees, 25 cents each,
\$2.50 per 12.

This pretty apple is especially adapted for preserves and is always sure to bring a good crop.

Dieser schöne kleine Apfel ist zum Einmachen sehr beliebt und bringt immer sichere, reiche Ernten. Der Baum wächst schnell und kräftig.

✓ **Hyslop.** Ornamental as well as useful. Vigorously growing tree, produces in great abundance crimson apples. Fruit good for preserves.

✓ **Transcendent.** (Siberian.) An attractive yellow color, splashed and striped with red; bears very young, annual crops thereafter. We value it highly for preserves. Buds and blossoms exquisitely beautiful. Ripens in July.

Pears

In order of ripening. One and two-year-old trees, 35 cents each; \$3.50 per dozen, \$25.00 per 100. Extra large, 3 years old, and new varieties, 6 to 7 feet, 50 cents. \$5.00 per dozen.

The pear is the most profitable fruit we know of. After a tree has once begun to bear, it will bear regularly every year. The tree is very long-lived if it has a favorable locality, where it can send its roots deep into the ground for a supply of moisture; for this reason pear trees should only be planted where the subsoil is rich and deep.

The soil most adapted to pear culture is rich loam, which contains a good supply of humus. Sandy soil with clay subsoil is also good if well manured. Pear trees should, however, never be planted on soil where roots of cotton and potatoes rot, as such soil has the same effect upon pear trees. The following are the best varieties.

Die Birne ist die profitabelste von allen hier bekannten Obstarten, da sie immer sichere Ernten bringt. Die Wurzel des Birnbaumes geht tief in das Erdreich hinein und dort, wo

guter tiefer Untergrund ist und die Wurzel genügend Feuchtigkeit findet, erreicht der Baum ein hohes Alter und bringt sichere, reiche Ernten. Eine gute, reife Birne wird fast von einem Jeden anderem Obst vorgezogen. Man pflanze aber keinen Birnbaum auf Boden, wo Wurzelfäule (root rot) ist, dort stirbt der Birnbaum ab. Die Birne gedeiht am besten auf humusreichem, schwarzem oder Lehmboden; doch auf Sandboden mit Lehm-Untergrund wird sie mit dem allerbesten Erfolg gezogen. Folgende sind die besten Sorten:

✓ **Locke's Pride.** A new pear of special merit. It is a seedling pear originated at San Marcos, Texas, wonderfully prolific, and about two weeks earlier than Le Conte, which is without doubt its parent. It is better than Le Conte, bears when all others are a failure, is very juicy, buttery, highly flavored, and gets mellow on the tree; is rounder than Le Conte and comes in clusters. The greatest value in this new Texas pear, however, is that it does not blight like the Le Conte; the tree at San Marcos is as vigorous and healthy as a pear can be in California, and the old original tree shows not even a dry twig.

New trees and plants are introduced annually, some are even old varieties under a new name; these introductions are made for the money there is in it, as a new fruit brings a higher price than old varieties. Not so with this new pear (Locke's Pride); it is a pear that has come to stay and when once distributed all over the State and when the pear has proven to be what we claim it to be, it will become the leading commercial variety of the South. We expect to see them shipped out of this State in carload lots in a few years. Include a tree or two in your order, you will never regret it. It is the pear that will bring fame to its introducer. 50 cents each, \$5.00 per dozen.

✓ **Koonce.** Very early, of the very best quality, does not rot at the core. The fruit is of a straw color with red cheeks and brown dots. Tree of vigorous growth, healthy and very hardy in bud and bloom, so that late frost will not kill the blossoms.

✓ **Summer Beauty.** First raised in 1873, and introduced in 1893 by us. This pear is the finest and the surest bearer of all varieties that ever have been tested so far south. The trees have not failed to produce heavy crops every year since 1880. It is a vigorous, symmetrical grower and late bloomer, so that spring frost will not injure it. The fruit is very large and handsome, of yellow color with a bright red cheek, flavor sweet, sugary, rich, aromatic and pleasant, excellent quality, always grows in clusters of from three to five. One of the rarest and most productive pears in cultivation. Ripening the end of July. Price of well rooted,

one-year-old trees, 50 cents each, \$5.00 per dozen.

✓ **Flemish Beauty.** Medium, beautiful, juicy, melting, rich and firm, does well here; color greenish yellow, with bright red cheeks.

✓ **Smith's Hybrid.** It is one of our best pears. We consider it better than Le Conte in quality, and being earlier it brings a better price in the market. The fruit is larger than Le Conte.

✓ **Le Conte.** Of remarkable vigor and beauty of growth. The fruit is bell-shaped, of a rich, creamy yellow when ripe; very smooth and fine looking, and a good shipper.

✓ **Bartlett.** Standard and dwarf. Everyone is acquainted with this large yellow pear. Fruit very rich, and highly aromatic — the reason why this pear can always be sold while others may be refused. Tree grows dense and of even and conical shape.



1 BUSHEL FROM A 4 YEARS OLD
KIEFFER PEAR TREE.

✓ **Kieffer Hybrid.** Called by many the "Queen of Pears". Fruit large to very large, skin yellow, with a brilliant vermilion cheek, flesh brittle, very juicy, with a marked musky aroma. Tree very vigorous and very prolific. Considered the best all-around pear.

✓ **Garber Hybrid.** Oriental strain, like the Smith's, fruit resembles the Kieffer in size, shape and color, ripe three weeks before.

Quinces

25 cents each; \$2.50 per dozen.

The Quince likes a rich, deep, moist and at the same time loose soil, and requires careful cultivation. The fruit is only used in a cooked state and it is a great favorite with the housewife owing to its rich aroma, which makes it fit for all kinds of preserves and jellies.

Die Quitte liebt einen sehr reichen, tiefen, lofen Boden und gebraucht eine sorgfältige Kultur. Die Frucht wird nur gekocht genossen, da sie roh hart und holzig ist. Sie ist bei der Hausfrau sehr beliebt, da sie ein feines Aroma hat und wird beim Einkochen von anderem Obst verwendet, da sie demselben einen feinen Geschmack giebt.

✓ **Orange.** Large, roundish, bright golden yellow, cooks tender, and is of excellent flavor. Valuable for preserves and flavoring, very productive; one of the most popular and extensively cultivated of old varieties. Ripens in October.

✓ **Champion.** Fruit very large, fair and handsome. Tree very productive, bears when young. flesh cooks as tender as the apple, flavor very delicate, imparting an exquisite taste and odor to any fruit with which it is cooked.

Pecans

3 to 4 feet, 75 cents each, \$8.00 per dozen; 5 to 6 feet, \$1.00 each, \$10.00 per dozen; 7 to 9 feet, \$2.00 each; 9 to 12 feet, \$3.00 each.

This is by far the choicest table nut that is grown in America. Each year the demand is increasing; the supply can never equal the demand for good nuts. They are a healthful, nutritious article of food. Plant a tree if you have only a small place and a thousand trees if you have the right land for them. You can count on a good income for your children and your grandchildren. The pecan tree grows on any deep soil, clay with gravelly subsoil preferred. If you have a river bank that washes badly and want to make this ground valuable, we can enlighten you, by advising to plant it in a pecan orchard; after the trees are 4 to 5 feet high, plant the ground in Bermuda grass for sod, and you have more than doubled the value of your land. If it's a shade tree you want to plant this winter, stop and think it over; why not plant a pecan tree?

✓ **"Daisy."** Takes the first place of all commercial nuts; is not only the largest paper shell in existence, but is well filled, of a fine, sweet



Daisy Pecan Trees. I planted these ten years ago
Celestial Figs in front.

flavor; a regular bearer and a beautiful shade tree. The original tree has not failed to bear a good crop since it first began in 1894.

Fretscher. A large oblong nut, bright yellowish brown in color with a few purplish black markings, shell very thin, cracking easily. Kernel large, easily removed, full and of good quality. One of the handsomest nuts grown.

Schley. Size medium to large, oblong, somewhat flattened; light reddish brown with a few markings of purplish brown; shell thin, separating easily from the kernel; kernel full, plump, bright yellowish brown in color; flavor rich nutty, in quality one of the best. Tree a good grower, and an excellent variety.

Stuart. One of the oldest of the named varieties, but somewhat short; ovoid in shape; shell thin; partitions somewhat corky; kernel plump; quality very good.

Success Pecan. Originated in southern Mississippi. Large size, shell thin, kernel very plump; quality good; flavor good; highly prolific, one of the very best and most promising sorts.

Van Deman. A large nut averaging from 45 to 50 nuts per pound; oblong in form; shell quite thin; quality good; tree a vigorous grower; prolific bearer.

Walnuts

Juglans Cordiformis. Nuts medium size, thin shell; if cracked longitudinally kernel can be removed entire. Meat is of good quality; tree is a vigorous grower and forms a fine head. Perfectly hardy. We consider it the best of all walnuts. 2 years, 2 to 3 feet, 50 cents each.

Juglans Sieboldiana. A native of the mountains of Japan. Extremely hardy and vigorous grower. Three-year-old trees have produced nuts. Wonderfully productive. Meat sweet and of best quality. 50 cents each; trees 2 to 3 feet.

Apricots

One year trees, 25 cents each, \$2.50 per 12;
large, 2-year-old trees, 35 cents each,
\$3.50 per 12.

The apricot is one of those fruits that do fairly well on limestone soil; a rich, heavy soil, however, is preferred. As the apricot blooms early, it should not be planted extensively in localities visited by late frosts. The



Original Daisy Pecan Tree on Our Grounds

fruit is much beloved for its rich and aromatic flavor, and the apricot should be represented by a few trees, at least, in every garden. The culture is about the same as that of the peach.

Die Aprikose gedeiht gut auf Kalkboden; auch liebt sie einen mehr festen als lockeren Boden. Sie blüht früh und die Ernte ist nicht immer sicher, da sie oft durch Spätfrost zerstört wird. Es ist die erste Frucht, die reift, und von einem köstlichen Aroma. Ein Jeder sollte einige Bäume dieser lieblichen Frucht anpflanzen. Der Baum sollte wie ein Pfirsichbaum behandelt werden.

✓ **Royal.** Fruit large, oval; color of skin dull yellow, tinted with red on the sunny side; flesh pale orange color, firm, juicy, rich and vinous; freestone. Ripens end of June.

Blendheim. Russian, large, golden yellow with red cheek: good quality, bears well.

Moorpark. Large, excellent, an old favorite and one of the best bearers. This is the best of all apricots.

Figs

20 cents each, \$2.00 per 12; \$15.00 per hundred.
Strong trees.

We might almost say there is no tree which so abundantly repays its owner for the little trouble it requires as the fig. From June to October ripe fruit may be had almost daily from

the same tree, providing there is enough moisture to constantly keep the tree growing during this time. The best place for a fig tree is near a well or a spring or any other place where there is always a plentiful supply of water. During extreme cold weather figs sometimes freeze to the ground, but they sprout from the roots again in the spring. This, however happens only every 10 or 15 years, if only the hardiest varieties are planted.

Wohl keine Obstart bringt hier im Süden so reiche Ernten als die Feige. Vom Juni bis Ende Oktober kann man täglich reife Früchte von einem Feigenbaum pflücken, wenn er genügend Feuchtigkeit hat, um beständig wachsen zu können. Die Feige sollte an Brunnen, Quellen oder dort, wo der Boden beständig feucht ist, angepflanzt werden. Es kommt vor, daß die Feigenbäume in strengen Wintern bis auf den Boden abfrieren, sie treiben aber immer wieder von neuem aus den Wurzeln.

Green Ischia. Green, medium size, of excellent quality.

Magnolia. Large, rich fruit, yellowish brown. Hardy here. Small one-year trees bear fruit first summer.

Brown Turkey. Medium, brown, very sweet and excellent; very prolific and hardy. The most reliable fig for open field culture.

Celestial. Small pale violet, with bloom very sweet, prolific, hardy.

Peaches

Prices except where noted: 1 year old, 3 to 4 feet, 20 cents each, \$17.00 per 100. 5 to 6 feet, 1 and 2 years old, 25 cents each, \$2.50 per dozen, \$20.00 per 100. In order of ripening.

The peach is probably more extensively cultivated in our country than any other fruit, and it well deserves its popularity among the American people, as there is nothing that excels a luscious, red-ripe peach. There has, however, been much complaint of late that the finer varieties do not bear enough in Texas. People attribute this to the drought, yet the failure in most cases is due to the ignorance of the people. The traveling tree agents from other states introduce new varieties every year that are in most cases not at all adapted to our climate. Therefore, never buy a tree unless you know that it is grown by a reliable nurseryman in your own State. West Texas is a dry country, but nevertheless good peaches can be raised, and plenty of them, provided proper varieties are planted.

The peach succeeds in almost any soil, but it prefers sandy soil with red clay subsoil to any other. The following varieties are all

thoroughly tested by me, and I consider them the best collection that can be made for our climate. They are selected from 400 different varieties, and as each variety has a ripening period of from ten to fifteen days, peaches may be had at all times from the middle of May until November. I have arranged them in the order of ripening, for the convenience of the buyer.

Die Pfirsich ist die am meisten hier angepflanzte Obstart und das mit Recht, denn nichts geht über eine gute, reife, saftige Pfirsich. Leider wird die letzten Jahre so viel geklagt, daß die Bäume keine Früchte tragen; zum Theil wird wohl die Trockenheit Schuld daran haben, aber die größte Schuld liegt darin, daß durch die Baum-Agenter Bäume massenhaft in den Markt gebracht werden, die im Norden oder Californien gezogen werden; solche Bäume wachsen sehr gut, aber bringen höchst selten Frucht; deshalb pflanzt niemals Pfirsichbäume, wenn ihr nicht bestimmt wißt, daß sie im Süden gezogen sind. Die hier folgenden Sorten sind die besten aus nahe 400 Sorten, welche ich die letzten 30 Jahre hindurch versucht habe. Jede Sorte hat eine Reifezeit von 10 bis 15 Tagen und in dieser Liste sind alle Sorten enthalten, die von Mitte Mai bis November reifen. Der Pfirsichbaum gedeiht auf fast jedem Boden, am besten auf Sandboden mit rothem Lehm als Untergrund.

I. RIPENING HERE FROM MAY 20 TO JUNE 10.

Mayflower. A new variety of extreme early ripening, a late bloomer, and being almost entirely covered with red, it is a good market variety. Tree a strong thrifty grower, very prolific, size large, nearly round. 25 cents each.

Dwarf Japan Blood. Tree of dwarf habit, surest bearer of all the early peaches; fruit is large, pointed, red cheek and end, and sometimes blood-red flesh.

Alexander. Good quality, high color, flesh greenish white. Best bearing May peach.

Greensboro. Earlier and larger than Alexander, fine flavor and attractive appearance.

App Beauty. A rival to Elberta; character, size, color and quality the same, and ripens two to three weeks earlier. The value of this as a market and family peach will be easily seen, and no other statement will be necessary to place it at the head of good peaches.

Hobson. Ripens June the 20th, is very productive, an improved Mamie Ross, ripening earlier, semi-Cling.

Triumph. "The earliest yellow peach in the world". A perfect yellow freestone; of excellent quality. Ripens after Alexander. A good keeper; very prolific. Two-year-old-trees bore half a bushel each.

Honey. The sweetest of all peaches we have, and about the best bearer. Late frosts have never killed the young fruit here. Color is attractive and it always sells easily. Honey is about the best peach for general planting we have in the South and the Gulf Coast.

II. RIPENING JUNE 5 TO 20.

✓ **Southern Early.** This is the largest of all early peaches; good quality, very prolific, sweet and juicy.

✗ **Family Favorite.** (From W. H. Locke, Fannin Co., Texas.) From Chinese Cling crossed with some other good peach. Productive. Skin quite fuzzy, clear creamy white with rich pink blush on one side. Flesh white, tint of red at stone, free, excellent quality. Seed medium. It has become a standard variety.

✓ **Bokara.** The hardiest peach known. It is of fine quality and a good bearer. Does remarkably well here.

✓ **Crosby.** Medium, fine rich yellow color, with streaks and shades of carmine, very prolific. June 20 to July 15.

✓ **Early Rivers.** White, red-cheeked, tender free-stone; bears very young, and rarely misses a full crop. Ripens June 20.



✓ **Mamie Ross.** A seedling of Chinese Cling. Fruit very large, nearly covered with a delicate carmine; flesh white, juicy and of good quality; a regular and prolific bearer.

✗ **Husted Early.** Large size, in shape roundish, skin smooth and of light yellow color, with a beautiful red cheek on sunny side. Flesh light cream color, flavor rich and delicious, melting, juicy and vinous.

✗ **Success.** Productive. Contains Indian and Mexican blood. Very sure and prolific. Skin dull yellow, covered with reddish brown mottlings. Flesh yellow with red next to the seed. Cling. 25 cents.

III. RIPENING JUNE 20 TO JULY 15.

✓ **Pallas.** Large, flesh white, melting with a rich, vinous aroma, profuse annual bearer, as sweet as a Honey peach.

✓ **Gen R. E. Lee.** Cling, similar to Chinese Cling, but earlier and more prolific.

✓ **Carman.** A large, white freestone with red cheeks, that originated in Limestone County. Fine flavor; ripens July 5.

✗ **Early Bell.** Very large, skin white, with red cheeks, flesh white, firm and excellent flavor; tree a rapid grower and very prolific, a seedling of Chinese Cling.

✓ **Champion.** Very large peach, highly flavored and beautifully colored, flesh white and skin white with red cheek, small pit and thick flesh. One of the best peaches.

✗ **Dixie.** A seedling from Elberta, large, two weeks earlier and a better shipper. Fine flavor, beautiful color, yellow with pink cheeks. Tree is a fine grower and the best bearer in San Marcos, Texas, where it originated. A gentleman working in the Wood National Bank bought a peach many years ago, and it being of such fine flavor and large size, he planted the seed just back of the bank building, where it grew vigorously, and after bearing, everyone seeing it was astonished at the size and good color of the fruit, as well as at the productiveness of the tree. Mr. F. M. Johnson sent us the first buds and named it the "Dixie" peach. We find it to be superior to Elberta in flavor. It is the finest peach that ever originated in southwest Texas. Peach is yellow like Elberta. 5 to 6 feet, branched, 25 cents each.

✓ **Hero.** A splendid variety for canning purposes. The tree grows to very large size and produces beautifully colored, white fleshed, juicy clingstone peaches in great abundance; sure to bear every year.

✓ **Belle of Georgia.** Very large, white freestone of excellent flavor. Trees grow and bear well; fruit a very good shipper.

✗ **Peerless Peach.** (White Cling.) Seedling of Chinese Cling, but a better bearer, very large; red-sided. Fine for the market and canning; tree is a compact, quick, healthy



Seven Months Old Budded Plum Trees, 34,000 in Nursery Rows.

grower, originated at New Braunfels, Texas. Ripens July 10 to 20. Price 25 cents each, \$2.50 per dozen.

IV. RIPENING FROM JULY 15 TO AUGUST 10

Elberta. The peach that everyone knows. A large yellow freestone, red next to pit. The peach for the market.

Comal Cling. The best, largest and finest yellow clingstone. The original tree was found growing behind an old house at one of my neighbors'. Fruit very large, dark, juicy and sweet; trees growing to large size; leaves very large; a regular bearer. Ripens July 1 to 16.

Old Mixon Cling. The juiciest and best flavored white clingstone peach; of very large size and best bearing qualities.

Governor Colquitt. (Yellow Cling.) Large, yellow, fine quality, very hardy, made a full crop when three years old; one of the finest marked peaches, firm, rank grower, originated at New Braunfels, Texas. Ripens August 10. 25 cents each, \$2.50 per 12.

Ward's Late. Large, globular, white with red cheeks, very good prolific.

✓ **Gold Dust.** Prolific. Tit small. Skin quite fuzzy, orange, mostly covered with bright crimson, handsome. Flesh orange, very firm, a little red at stone, best quality. Cling, very pretty. Price 25 cents each, \$2.50 per dozen.

V. RIPENING FROM SEPTEMBER 1 INTO OCTOBER.

Stump the World. Old standard white freestone, reliable bearer. Ripens September 15.

Henrietta. The best late clingstone. Very large, yellow, crimson cheek; a regular bearer.

Heath. A good old standard white cling. August to September.

VI. RIPENING IN OCTOBER TO NOVEMBER.

Stinton's October. Yellow-fleshed, red cheeked October cling; a regular bearer, and one of the very best all-around late peaches.

Wonderful. A remarkably fine late yellow freestone.

Common Seedlings. Extra strong; 6 cents each, \$5.00 per 100.

Plums

In order of ripening. Prices, except where noted, 3 to 4 feet, 25 cents each, \$2.50 per dozen, \$20.00 per 100; 2 years old, 5 to 6 feet, 35 cents each, \$3.50 per dozen, \$25.00 per 100.

There is no fruit tree that bears such an abundance of fruit at so early an age as does the plum. Many varieties bear the first year after planting, and for this single reason should be most extensively planted. A plum tree requires very little care, but for the fact that it produces its fruit in such great abundance the tree does not live very long, and new trees ought to be planted every year to always have an abundance of this useful fruit. The American or Chickasaw varieties are mostly used for preserves and jellies, while Japanese varieties are for the table.

Rich loam with gravel subsoil is the best soil for plum culture, while sandy soil is almost as good if manured.

The following is the best collection for the South and cannot be excelled by any.

Es giebt keinen anderen Obstbaum, der so jung nach dem Verpflanzen Früchte hervorbringt, wie der Pflaumenbaum. Von manchen Sorten sind schon einjährige Bäume mit Früchten beladen. Dieser Obstbaum sollte hier mehr angepflanzt werden, da er ja wenig Kultur verlangt und eine der dankbarsten Obstarten ist. Die amerikanischen Sorten eignen sich besonders gut zum Einkochen und die japanischen sind als Tafelobst sehr beliebt. Da der Pflaumenbaum in unserem Klima so überreich trägt, ist seine Lebensdauer kurz, und sollte man jedes Jahr einige Bäume anpflanzen, um immer gesunde, tragende Bäume zu haben. Reicher Lehmboden sagt den Pflaumen am besten zu. Folgende Auswahl von Sorten ist die allerbeste für den Süden und Westen und kann nicht übertroffen werden.

Funk. An Abundance-Chickasaw hybrid. Tree vigorous and healthy, upright, prolific. Fruit above medium, heart-shaped, bright red; cling. Extra quality for so early ripening. Ripens the earliest of any plum known to us. So far not attacked by rot or curculio, when growing among trees much affected. Price 25 cents each.

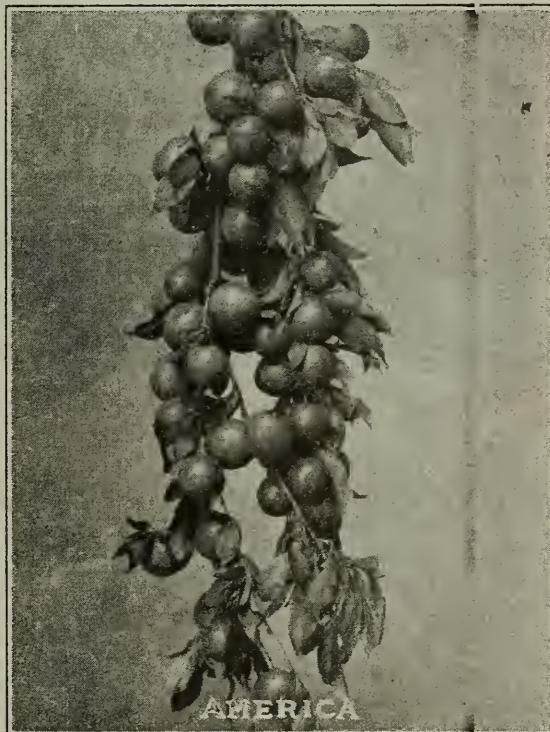
First. A combination cross of Hawkeye, Hammer, Milton, Wyant and Burbank. It is the earliest of all plums, and also the largest, handsomest and most productive of all early plums. It blooms late and ripens in an incredibly short time after blooming. Tree never fails to produce all it can hold.

Howe. Supposed to be a seedling of Excelsior. Strong, vigorous grower; color, which is reddish yellow, becoming wine-red when

fully ripe, pit very small, very productive here and as large as the Burbank.

McCartney. Originated in Texas; larger than Wild Goose. 14 days earlier, egg-shaped, golden yellow color, enormous bearer. This is the best yellow plum. 25 cents each.

Shiro. A combination of Robinson, Myrobolan and Wickson. Rank grower, enormously productive; fruit will keep a month, and is so transparent the pit can be seen through the flesh; apple shaped; the earliest of all Japanese plums.



Gonzales. A cross between the American and Japan plum. The fruit is larger than a Botan, it is sweet and juicy and will keep for a week after ripening. The tree is a good grower and is very prolific. It ripens the middle of June.

Wild Goose. Chickasaw, vigorous, red, large, very good, abundant when fertilized.

Happiness. A new hybrid. The fruit is very large, color glowing red, and in quality it is rarely equalled. It is really the most productive of all plums. Tree is a good grower. Pit very small. Three year old trees averaged \$5.00 per tree this year, as this variety was not damaged by the late frost last spring.

Sweet Botan. Japanese, one of the finest older varieties, which is too popular to need a long description.

Bartlett. A cross between Simoni and Delaware. Said to have exactly the quality, flavor and fragrance of the Bartlett Pear. Fruit turns deep crimson when fully ripe; light salmon-colored flesh.



Wickson. Japanese, tree grows in vase form, sturdy and upright. The fruit is evenly distributed all over the tree. It changes to white when about half grown, and remains so until a few days before ripening, when it changes to a glowing carmine. Small stone, the flesh is of a fine texture, firm, sugary and delicious and will keep two weeks after ripening. A fine rare plum.

The Santa Rosa. No one fruit has so strongly individualized the name of Luther Burbank, as the plum. Some twenty varieties, now well known and very widely grown, are the result of his creative genius, all of which have stood the test of experience with growers and in the market of the world. As a result, his latest, the Santa Rosa, in every way not only a superior fruit from every point of view, but must be regarded as the best thing in the way of plums that has come from his hands. The Santa Rosa is a medium bloomer; quality of fruit is unequalled, as a shipping plum it is the peer of them all. Plums are a deep purplish crimson, each fruit averaging 3 inches in circumference each way; the flesh near the skin is purple shaded with rosy scarlet and pale amber towards the stone, which is very small; the eating quality is unequalled; rich, fragrant, delicious. Ripens a week before Climax and two weeks earlier than the Burbank. Tree is strong, vigorous, upright grower. Price, 4 to 5 feet trees, 35 cents each, \$3.50 per 12.

Nona. Ripens June 28. Large, somewhat pointed; color bright red, flesh yellow, juicy;

high quality, regular bearer; very valuable here. We consider it one of the very best.

Mariana. Vigorous, red, medium, good bearer, very fine for a shade tree; 15 cents each, \$10 per 100; 5 to 6 feet, well branched, 25 cents each.

Sultan. Japanese. Very large, purplish red, flesh red, very sweet, juicy, and one of the best red plums.

Mikado. A very large plum of greenish yellow color, nearly round, very little suture, a rapid grower, more so than any other. This is the most remarkable of all plums for its enormous size, beauty and good quality.

Duarte. Luther Burbank's newest introduction. Has been under Mr. Burbank's observation for twelve years and has never failed to bear a full crop of superior fruit. The tree is a good grower; it is a better plum than Apple, Sultan or any blood plum so far introduced. The new plum is from seed America by Climax pollen, 1900. Skin deep purple, big yellow dots, blue bloom. Tree upright, hardy looking, fine grower, never failing, abundant bearer. Ripens July 10. Trees, 4 to 6 feet, 25 cents each, \$2.50 per dozen.



Burbank. Japanese named after the introducer of this and most of the other good plums. The best bearing variety we have. When fully ripe, the fruit is deliciously sweet.



Excelsior. Fruit medium, sweet, juicy, melting; color reddish purple; a good plum and very productive.

America. A seedling of Robinson crossed with Botan. The most beautiful of all plum trees in appearances. It is of large size, a little above the average size of Japanese plums, and larger than the popular American varieties. Flesh of light yellow color, moderately firm and very delicious. Ripens two or three weeks earlier than Burbank. Exceedingly prolific.

Everbearing. This is certainly a fine plum. The fruit is small, but deliciously flavored and very sweet, and is produced in great abundance. Should be gathered under the tree (not picked off) every morning. Begins to ripen about the middle of June and continues to about the middle of August, the last fruit just as good as the first.

Kelsey's Japan. Vigorous, greenish yellow, very large, excellent, prolific, sweetest of all plums, early bloomer.

Cherries.

2 years, 35 cents each, \$3.50 per dozen.

Early Richmond. Early, bright red, acid. Tree is a strong grower; very prolific.

English Morello. Dark red, nearly black, very acid. Tree is a strong grower.

Mulberries

6 to 8 feet, 35 cents each; \$3.50 per dozen.

As a shade tree for the chicken yard the mulberry is about the best tree to be had. Chickens eat the fruit as soon as it drops from the tree. The finer varieties are also eaten by children. The tree grows very quickly and is easily transplanted.

Als Schattenbaum und für den Hühnerhof kann der Maulbeerbaum nicht übertrouffen werden, da die Hühner die Frucht gerne speisen. Kinder lieben die Früchte sehr. Der Baum wächst schnell und ist leicht zu verpflanzen.

Hick's Everbearing. Profuse, ripens 3 months, fine grower for shade and the best of all trees for the fowl yard. 6 feet, 25 cents each. 8 feet, 35 cents each.

Russian. Unquestionable the best shade tree. The tree is very hardy and long-lived, and grows rapidly to a beautiful round shape. The fruit is small and does not drop from the tree when ripe; some trees do not produce fruit at all. It is very much sought for street planting, for the shining leaves stand the dust well. 4 to 5 feet, 25 cents; 6 to 7 feet, 35 cents.

Nonbearing Large-leaved Mulberry. This is one of the hardiest quick-growing shade trees, forms a beautiful round head, has large foliage, brilliant dark green. This mulberry is entirely hardy in winter and has never been frozen back here. One year, 6 to 7 feet, 25 cents each; 2 years, 8 feet, heavy, 50 cents each \$5.00 per dozen.

Japan Persimmons

(Diospyros Kaki.) A fruit from the Orient that has come to stay. The growing of this fruit in the South, both for the market and home consumption, is no longer an experiment. It has proven itself adapted to the whole cotton belt, and is becoming quite popular on the northern fruit market.

Trees on the native persimmon will grow on any soil in the South, but are not long-lived in wet, low places; high, well-drained, sandy soil suits them best, and they will do better on very poor land than any other kind of fruit tree. They are especially suited for planting in old peach orchards, as the old trees become

worthless, or to replant the land after a peach orchard has been destroyed.

Fruit should be shipped just before it begins to soften, and directions how to eat it should be printed on wraps to be used with each fruit, and dealers instructed to display only ripe fruit.

Price of **Japanese Persimmons on native Persimmon Root**, 35 cents each or \$3.50 per dozen.

Die japanische Persimone ist die süßeste aller Früchte und ernt im Herbst, nachdem sie einen kleinen Frost bekommen hat, genießbar. Der Baum wächst langsam und ist mehr strauchartig, trägt aber sehr jung und reichlich. Der Baum ist etwas schwierig umzupflanzen, da er nur eine Pfahlwurzel hat, auch wird das Holz oft im Frühjahr nach der Steigung des Saftes durch Spätfröste getötet.

Hachiya. Very large, oblong, conical, with a sharp point, very showy, diameter $3\frac{1}{2}$ inches longitudinally and 3 inches transversely, color of skin reddish yellow, with occasional dark spots or blotches and rings at apex; flesh dark yellow, some seed, astringed until fully ripe, then very good. Tree vigorous and very shapely.

Hyakume. Large to very large, varying from roundish oblong to roundish oblate, but always somewhat flattened at both ends, generally slightly depressed at the point opposite the stem, nearly always marked with rings and veins at the apex, skin light buffish yellow, flesh dark brown, sweet, crisp and meaty, not astringent, good while still hard, a good keeper, one of the best market sorts. Tree of good growth and sure bearer.

Triumph. Originated near Sanford in Orange county, Florida, from seed from Japan. Its quality is of the best, size medium, tomato-shaped, color of skin dark red, handsome and showy, flesh with but few seeds. It is very productive, the fruit of a single tree having been sold for \$17. Ripe in October and holds on the tree until January.

Tane-Nashi. Very large, roundish, conical pointed, very smooth and symmetrical, color of skin light yellow, changing to bright red at full maturity, flesh yellow, generally seedless, astringent until fully ripe, then one of the best.

Yemon. Large, flat, tomato-shaped, somewhat foursided, diameter $2\frac{1}{2}$ inches longitudinally and 3 inches transversely, very smooth and regular in outline, skin bright orange yellow, flesh yellow, generally seedless, quality very fine. Tree rather an open grower with distinct foliage of light shade.

Pomegranates

The pomegranate seems to have been created especially for our dry climate. It succeeds in any soil and bears regularly an abundance of the most refreshing fruit.

Little trouble is required for its culture. It is always free from all diseases, and grows in any deserted corner of the garden where no other fruit succeeds. The fruit is very sweet and refreshing, and ripens during August and September.

Der Granat-Apfel scheint speziell für unser heißes, trockenes Klima geschaffen zu sein, da er auch in der größten Dürre-Periode noch wächst; auch ist er frei von jeder Krankheit und Ungeziefen. Er trägt reich, die Früchte sind groß, wenn reif, sehr süß und von erfrischendem Wohlgeschmack. Reifezeit August und September.

Old Favorite. Is the best of all the fruiting pomegranates. I call it Old Favorite because it has been grown here at New Braunfels for at least fifty years, and it has been proven to be far superior to all the other fruiting kinds which were introduced later. The fruit is the very largest, and refreshing and sweet. The tree, or shrub, is extremely hardy and has glossy green leaves. Flowers are large and crimson in color. 25 cents each, \$2.00 per dozen.

Oranges

Satsuma. Experience has taught us, that orange culture in Texas for profit is a failure. A good many of our customers made large investments in orange orchards in Texas, and on account of frost have not realized anything on their investments, and we are growing only a few for such customers as want them and can protect them in winter. One year old, budded on Trifoliata roots, each 50 cents, \$5.00 per dozen. Two years old, 75 cents each, \$7.00 per dozen.

Lemons

The "New Wonder" Lemon is a true ever-bearing variety. On a plant six feet high, not less than 90 lemons were growing at a single time. Fruit has been taken from this tree weighing 4 pounds. It is not uncommon to make twelve lemon pies from one lemon. Will fruit freely the second year. Price, 6 inch pot plants, 50 cents. 4 inch pots, 25 cents each.

Grapes and Berry Plants

Grapes, Standard List

In succession. Finest quality. This list contains the best and most successful. 15 cents each, \$8.00 per 100, except where noted.

The grape thrives in almost any soil and is successfully grown all over the South. With but little skill and labor it brings abundant crops every year. The following are the best Southern varieties.

Die Weintraube gedeiht fast in jedem Boden und in jeder Gegend des Südens. Mit etwas Mühe und Arbeit bringt sie reiche Ernten. Folgende sind gute Sorten.

✓ **Delaware.** Ripens in June. Medium to small, with very thin, tender, red skin.

✓ **Catawba.** Strong healthy grower. Berries large, round, coppery red; good bearer.

✓ **Brilliant Grape.** Growth strong. Vines endure winters anywhere. Clusters large, cylindrical, or somewhat conical. Berries large light to dark red, translucent, with a thin bloom, very handsome when well ripened: skin thin, rather tender, but seldom cracks; pulp meaty yet very tender, melting and delicious. 25 cents each.

✓ **Malaga.** White, similar to Muscat, later, though no larger than the largest Muscat, stronger grower, bunches more uniform, but not so sweet and spicy, better keeper as a rule. Succeeds better in very hot places like the Imperial Valley, as it has more foliage and heavier growth. 25 cents each, 2 years old.

✓ **Moore's Early.** Very large, black, good market.

✓ **Worden.** Very large, black, good market; improved Concord.

✓ **Niagara.** Large, white, very good table and market grape.

✓ **Concord.** Large, black, table, market.

✓ **Jacques.** (Black Spanish, Le Noir, Blue French), small, large clusters, black, red wine. 2 years, 15 cents; \$8.00 per 100.

✓ **Herbemont.** (McKee, Bottsi, Brown French) small, large clusters, purple, finest quality, table



wine; best old grape in Southwest Texas. 15 cents; \$8.00 per 100.

✓ **Texas Queen.** New Grape. This grape is thoroughly adapted to the climate of West Texas and will prove a wonderful success in this section, being well suited to our dry, hot climate and at the same time possesses the rare merits of the more delicate varieties in more moist climates. This is a remarkable grape and should be planted by every grower. Bunches large and compact, and ripens evenly over the bunch. The skin is thin, yet tough enough to stand shipping well. The seeds are very small and few in number. The berries are almost seedless. The flavor is fine, and the vine very productive. The grape when eaten does not leave the burning effect in the mouth so commonly left by other grapes. Price 2 year transplanted, each 25 cents, \$2.50 per dozen.



Dewberries and Blackberries

In succession.

The blackberry is not so successfully cultivated in our part of the State as it is in North Texas, but the Mayes Dewberry reaches its greatest perfection here. It produces fruit of enormous size, of good flavor and in great abundance. Every lover of berries ought to have it.

Die Brombeere gedeiht hier nicht so gut wie im nördlichen Texas, aber die Traubeere (Mayes Dewberry) erreicht hier ihre größte Vollkommenheit. Sie bringt erstaunlich reiche Ernten von riesengroßen Früchten. Jeder Beerenliebhaber sollte davon pflanzen.

✓ **Mayes' Dewberry.** New, very large, highly flavored; it roots deep, is very prolific and never fails. Price 35 cents per dozen, \$2.50 per 100. \$10 per 1000.

✓ **McDonald Berry.** It is hard to decide whether this is a dewberry or blackberry. It bears in clusters like a blackberry, but tips like a dewberry. It grows on any soil, and is the most productive of all berries. Berries are large, juicy and of the best quality. Strong plants 40 cents per dozen, \$3.00 per 100. \$15.00 per 1000.

✓ **Dewberry, Guadalupe.** It is several years ago that we introduced the Guadalupe dewberry and owing to the great demand for this new variety we got so short on plants, that it took us several years before we could offer them again, and now is the first time we again have plants of this fine dewberry on the market. It is a native of this section, that in cultivation proved to be the best of all dewberries. It is really a marvel. There is no bush-dewberry that can

equal this in productiveness, quality of fruit, hardiness and vigor of growth. It is so far ahead of all other varieties in cultivation, that it is really in a class for itself, especially in size and productiveness. People who have tried this Dewberry say that they will grow no other. Experiment stations say it outranks all others, and there is no doubt about it, as it is thoroughly tried and adapted to our country. Price, large plants, 10 cents each, \$1.00 per dozen.

✓ **Dallas.** (Blackberry.) Very vigorous, drooping, thorny, productive, large, fine. 50 cents per dozen, \$2.50 per 100. \$10.00 per 1000.

✓ **Blackberry, Robinson.** The bush is a strong grower and enormous bearer; fruit very sweet. May. 35 cents per dozen. \$2.50 per 100.

✓ **Himalaya Berry.** Resembles both a blackberry and a raspberry, but the vine grows from year to year, and for best results should be pruned back to six or eight feet each winter. Large clusters of berries ripening in June and July. Price 10 cents each, \$1.00 per dozen.

Strawberries

25 cents per 12, \$1.00 per 100. \$5.00 per 1000.

To grow strawberries with success, irrigation is required in Western Texas, but where water may be had plentifully, it is very valuable, being about the first fruit in spring.

Die Erdbeere kann in West-Texas und anderen trockenen Gegenden nur mit Hilfe von Bewässerung gezogen werden, ist aber dann profitabel und das erste Obst, das reift.

Klondike. The plant is exceedingly vigorous, seems to be absolutely rust proof, and as near drought proof as a variety can be. Every

berry is firm and brilliantly colored. This makes it the greatest and safest money-maker. On good or well manured soil it is simply wonderful.

✓ **Texas.** The money making strawberry of the South. Besides being an immense producer of firm berries, of the highest quality, of fine



flavor and beautiful color, it is a thrifty grower and a splendid drought resister. During the hot summer months we often lose our strawberry plants; the Texas strawberry, however, is perfectly hardy and stands the heat well. Strong perfect plants, 50 cents per dozen, \$2.50 per hundred. \$10.00 per thousand.



Umbrella China Tree seven years old, on our grounds.

Shade and Ornamental Trees

All shade trees are nursery grown, are straight and have splendid roots.

The physical welfare of yourself and those that you hold dear is greatly advanced by the trees and plants which surround your home. What a deserted impression does a splendid house make if not a tree or plant is near, and what a pleasant feeling comes to you if you see a small hut surrounded by beautiful shade and ornamental trees. What a comfort does a single shade tree afford a farmer, when, after he comes home from his toil in the field, he can

recline under the same and take his afternoon nap.

Therefore, plant shade and ornamental trees around your house and you will be repaid for your trouble in many different ways.

Deine Zufriedenheit, Gesundheit und Dein Wohlergehen liegt im Anpflanzen von Schatten- und Zierbäumen um Deine Wohnung und im Hofe. Was für einen öden und ungemüthlichen Eindruck macht das allerschönste Haus, wenn kein grüner Baum oder Strauch zu sehen ist, und was für einen einladenden und erfrischenden Eindruck



macht schon die kleinste Gütte, wenn sie von Schattenbäumen umgeben und ein Bier- und Blumengarten davor zu finden ist; deshalb pflanzt Schattenbäume, Biersträucher und Blumen, ihr werdet reichlich belohnt durch den Gewinn, welchen ihr daran findet.

Umbrella China, a native of Harris County, and now widely known over the State. It is the finest and quickest growing of all shade trees. We have all sizes at the following prices: 6 to 7 feet, 25 cents each, \$2.50 per dozen, \$20.00 per 100. 8 feet and over, 50 cents each. We are the largest grower of Umbrella China trees in Texas and have over 10,000 this year to offer.

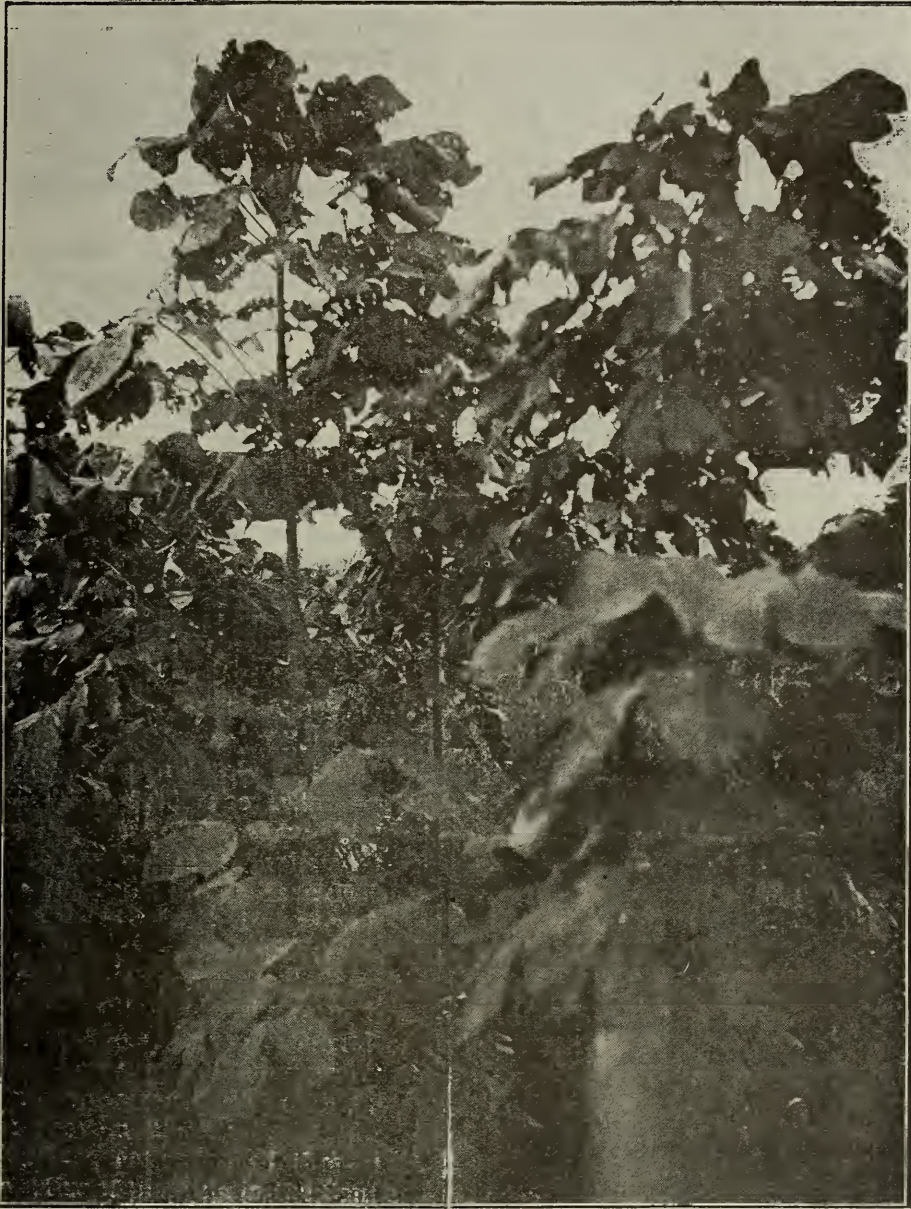
American Elm. Long-limbed, fast growing, is always admired; grows well on any ordinary soil. Price, 4 to 5 feet 25 cents, 6 feet, branched, 35 cents each; \$3.50 per dozen.

Box Elder. A quick growing hardy shade tree, a native of Texas; prefers a wet, deep soil. Straight trees, 5 to 6 feet, 25 cents each.

Ligustrum Japonicum makes a splendid evergreen shade tree; leaves dark green, pointed, 2 to 2½ inches long; produces large bunches of creamy white flowers, followed in autumn by purple berries. Price of trees, well trimmed, 3 to 4 feet, 25 cents each; 5 to 6 feet, 50 cents each, \$5.00 per 12. 6 to 8 feet extra heavy, 75 cents each; \$7.50 per dozen. Two-year-old bushy plants, 20 cents each, \$2.00 per dozen, \$15.00 per hundred.

Carolina Poplar. A rapid growing native shade tree; is very largely planted as a street and avenue tree, and is very popular. 5 to 6 feet, 25 cents each; 6 to 8 feet, 40 cents each.

Poplar, Lombardy. Graceful, tall, slender; gives a fine effect if properly placed on a



Sterculia Platanaefolia (Japan Varnish Trees, from 6 to 12 feet.)

landscape. Price, 5 to 6 feet, 25 cents each, 6 to 8 feet, 50 cents each.

Judas Tree or Red Bud. A very long-lived shade tree; very hard wood; large round leaves; making a dense shade. It is not a quick grower. The first tree to bloom in spring; has very pretty red flowers, which last a few weeks. Price 4 to 6 feet, 25 cents each. 8 to 10 feet 50 cents.

American Ash. A tree which is particularly well adapted to this latitude, makes quick growth and forms nice tops; leaves are a lively green color. 6 to 8 feet trees, 25 cents each.

Koelreuteria Paniculata. A tree from China. Upright growth; foliage stiff, green, feathery, often 18 inches long. Very attractive for single specimens on the lawn. Grows on any soil

and stands our hot sun well. 6 to 8 feet, 25 cents each. A good shade tree.

***Sterculia Platanaefolia*, (Japan Varnish Tree,)** a very hardy and at the same time very beautiful shade tree. It is particularly adapted to this climate, but not very well known. The stem is always straight and smooth and has the same color as the leaves, which are a beautiful light green. The leaves are from 6 to 10 inches across. Tree produces a spreading and dense top and grows to a very large size. A tree of fancy appearance, but stands as much drought as a hackberry. 4 feet, 25 cents; 6 feet, 50 cents; 8 to 10 feet, \$1.00.

Sycamore, a lofty wide-spreading tree, hand-shaped leaves, valuable for its handsome

foliage and free growth. 5 to 6 feet, 25 cents; 8 to 10 feet, 50 cents each, \$5.00 per 12.

Weeping Willow, a grand old tree for the cemetery and for the lawn. Should be planted in deep, rich soil, where it is constantly moist. 25 cents each. 4 to 6 feet.

TAMARIX

5 to 6 feet. 25 cents each, \$2.50 per 12.

Taririfloracans. Large dark green foliage, upright growth, can be grown into a tree.

Canaris Jap. Plumosa. Finest of them all, upright, curly light green feathery leaves.

Casyuca. Like the Indica in growth and foliage, upright curly light green feathery leaves.

Indica. Upright, dark green thick foliage; a late bloomer; flowers come in clusters, light pink color.

Oddeseana. Neat greyish foliage; flowers rose colored, very profuse bloomer, blooms from June to August.

Tamarix Africana. Fine feathery foliage, like that of the Juniper; valuable in sand or soil, where most shrubs will not do well; upright growth, small pink flowers on long stems.

Shrubs

All the following shrubs have been tested for years and found to be especially adapted to the South. I have a splendid stock of fine plants for this year's trade.

Alle die folgenden sind seit Jahren hier versucht und als die besten für unser Klima befunden worden. Ich habe einen großen Vorrath davon und starke, kräftige Pflanzen.

ALTHEAS

Grafted on hardy stock.

One of the best hardy flowering shrubs that we know of, and most especially adapted to West Texas, for the reason that it blooms during the entire summer, even then when monthly roses and other everblooming flowers are not in bloom. The flowers are not in the least affected by the hot sun in July and August, but are just as beautiful as they are in the cooler months. Price of strong plants, 3 to 4 feet, 25 cents each; \$2.50 for 12.

Tota Alba. Single, pure pearly white; dwarf habit; earliest of all Altheas to bloom and bloom freely. Don't overlook this sort because it is single; it is very desirable.

Lucy. Double red, large flowers.

Coerulea Plena. Double light purple.

Grandiflora Superba. Light pink, crimson center.

Fastuosa. Double pink.

Variegata Flore Plena. Double variegated or painted lady Althea. White with purple outside; petals shaded pink, 25 cents.

Punicea Rosea. Deep rose color; large flowers. 25 cents.

Rosea Plena. Single rose color, red to inside.

Violet Claire. Double violet, profuse bloomer.

Comte de Honeault. Double white, opens well, one of the best.

Monstrosa de Van Houtte. Very large double purple.

Purpurea Tobina variegata. The best variegated-leaf variety.

Amaranthe. Red, large, double.

Speciosa. Large double pink.

Violacea Variegata. Extra large double purple.

Rubis. The red "Tota Alba"; single.

Althea Rosea (Seedlings). Mixed, all colors, from best seed, strong plants, 2 to 3 feet, 15 cents each, or \$10.00 per 100. The best and finest summer bloomer.

SYRINGA--LILACS

25 cents each, \$2.50 per 12.

Purple Lilac, a well-known favorite. 25 cents each.

Syringa Rothomagensis. Red Persian Lilac, very profuse bloomer. 2 years, 25 cents each.

Grandiflora Alba. Very large, pure white trusses of flowers, extra fine, grafted, 2 to 3 feet, 35 cents each, \$3.50 per dozen.

Mad. Leon Simon. Very large, rosy lilac. 2 to 3 feet.

Persica. The Persian lilacs are well adapted to our climate and are more successful than the large double varieties. From 4 to 6 feet high with small foliage and bright purple flowers. 2 to 3 feet, 35 cents each.

Alba Pyramidalis. Upright growing lilac, can easily be pruned in tree form. Large clusters of double white flowers. 2 to 3 feet, 35 cents each.

Tournefort. Double; lilac color.

Croix de Brahy. Single; red.

Rononcule. Double azure mauve.

CRAPE MYRTLES

The Grape Myrtle has reached such a high degree of popularity, that there is hardly a

flower garden without a few of these lovely flowering shrubs. They are lately being used for hedges, which produce the most striking effect, and such a hedge is admired by all who see it. The first flowers appear early in May, and from then until frost the plant is continually a mass of flowers. Price of strong plants 2 to 3 feet, 25 cents each. White Crape Myrtle 35 cents each.

Pink, the earliest of all Crape Myrtles to bloom. Tree is of a rather dwarfish habit, but produces more flowers in one season than any of the others. 25 cents.

Crimson, grows to a good sized tree, and is almost always in bloom. The flowers are of a very rich crimson color. 25 cents.

Purple, the largest of all; produces very pretty purple flowers in great clusters. 25 cents.

White, always rare. Is a very profuse bloomer, but slow grower. 35 cents each.

SPIRAEA

Spiraea Van Houttei, a splendid new garden shrub, and one of the most beautiful of all. Immense bloomer with snow white flowers. 25 cents each.

Anthony Waterer. A fine hardy perpetual blooming shrub, particularly desirable for the door yard and lawn, or wherever fine hardy flowering shrubs are wanted. Rich rosy red flowers in large round clusters, very free bloomer. Price 25 cents each.

MISCELLANEOUS SHRUBS

Buddleia Variabilis Veitchiana. Butterfly Shrub. One of the most desirable summer flowering shrubs, beginning to bloom in July, it continues until cut by severe frost. The flowers are of a pleasing shade of violet mauve and are borne in dense cylindrical spikes which under liberal cultivation are from 15 to 20 inches in length and 3 inches in diameter. It succeeds everywhere and flowers freely the first season planted, and is always admired. 2 years old, 3 to 4 feet, 35 cents each, \$3.50 per dozen.

Buddleia Lindleyana. (Summer Lilac.) One of the most desirable summer-flowering shrubs beginning to bloom in July, it continues until cut by severe frost. The flowers are of a pleasing shade of violet mauve, and are borne in dense cylindrical spikes. It succeeds everywhere and flowers freely the first season planted. Price 25 cents each.

Cydonia (*Pyrus Japonica*)—Japan Quince. These are about the first spring blooming shrubs, flowers frequently appearing by the first of January. Some produce medium sized

fruit, which makes fine jelly. 2 to 3 feet, branched, 25 cents each. \$2.50 per 12, \$20 per 100.

LONICERA. (UPRIGHT HONEYSUCKLE.)

Alba. White Tartarian Honeysuckle. Forms a high bush, with creamy white, fragrant flowers. 2 to 3 feet, 25 cents each.

Rosea. A beautiful shrub, very vigorous and producing large bright red flowers striped with white. 2 to 3 feet, 25 cents each.

Rubra. Vigorous growing variety, very free bloomer, crimson flowers.

Lonicera Morrowi. (Bush Honeysuckle). A handsome Japanese variety with white flowers during May, but especially valuable for its bright red fruit during the summer and autumn months. Price 25 cents each.

Flowering Willow. (*Chilopsis Linearis*.) Native of the dry sections of western Texas and Mexico; they bloom constantly from May till late fall, grow on any soil and are long-lived. The lace-like flowers are about an inch and a half long and are borne in clusters. Colors **PURPLE**, 4 to 5 feet, 25 cents each. **WHITE**, 4 to 5 feet, 35 cents each.

Philadelphus grandiflora. (Syringa or Mock Orange.) The Philadelphus is an invaluable shrub. Of vigorous habit, very hardy, with large handsome foliage and beautiful white flowers, produced in the greatest profusion in the blooming season, it merits a prominent place in all collections of shrubbery. 2-year plants, 50 cents each.

Coronarius. (Garland Syringa.) A well known shrub with pure white, highly scented flowers, one of the first to flower. 2 to 3 feet, 25 cents each, \$2.50 per dozen.

Salvia Greggii. New, hardy, everblooming, red-flowering shrub. A native of West Texas. Extremely hardy. Is a great drought-resister and has stood a temperature of ten degrees below zero. It flourishes and blooms profusely in hottest and driest weather; it is as near an everblooming plant as we have ever seen. It begins to bloom in early spring soon after growth commences. The blossoms literally cover the plant. It requires a killing frost to check its flowering and a light frost in fall does not stop the blooming. The color is an indescribably lovely shade of red. It is a hard-wooded shrub, and adds another good shrub to the already good assortment for the Southwest. Grows 3 to 4 feet high and is very full and neat in appearance. Field-grown plants 25 cents each, \$2.50 per dozen.

Salvia Greggii. **White**. New. We having propagated the first plants of this new Salvia are the only house that can furnish genuine stock of this new white everblooming flowering shrub. The white Salvia is a seedling of Sal-

via Greggii; the shrub is just as hardy and vigorous a grower. It blooms from early spring until late in the fall, and blooms continually throughout the hot dry summer; the flowers are larger than those of its parent and of a creamy white color. This new shrub excels all other outdoor summerblooming plants, and is excellent for bouquets, wreaths and all design work. It is a hard-wooded shrub, grows 2 to 3 feet high and 4 to 5 feet wide. Field-grown plants, 25 cents each, \$2.50 per dozen.

ELEAGNUS, OLEASTER

Angustifolia. Silver-leaved oleaster; of erect growth and beautiful silvery foliage; flowers small yellow, in July and August. 25 cents.

Longipipes. Japan oleaster. In July the plant is covered with bright red berries of large size and edible, the flavor being pungent and agreeable. Laden with fruit the bush is highly ornamental. 2 to 3 feet, 25 cents each, \$2.50 per dozen.

PLUMBAGO

Capensis. A well known variety, sky-blue flowers. Price 25 cents each.

Lady Larpens. Small bush, very free bloom, flowers dark blue.

Broad-Leaved Evergreens

These are easily transplanted and grow very rapidly; therefore they should never be overlooked when ordering. You will always have a vacant place for a few. All the leaves should, however, be cut off before planting, otherwise they often fail to grow.

Folgendes sind die allerbesten Sorten und sollten nicht übersehen werden. Sie sind leicht und sicher zu verpflanzen, nur sollte alles Laub beim Verpflanzen abgeschnitten werden, sonst vertrocknen sie häufig.

California Privet, splendid for specimens, screens, hedges. 2 to 3 feet, 10 cents; for hedging, \$3.00 per hundred, \$25.00 per 1000. 2 years, extra heavy, \$4.00 per 100.

Euonymus Japonica. One of the fastest growing evergreen shrubs, suitable for either hedge or single specimen; can be greatly improved by cutting back to induce bushy form. No evergreen has such a bright dark-green color in winter as this. For quick results this excels. Fine strong plants, 20 cents each, \$2.00 per dozen, \$15.00 per 100.

Euonymus Latifolia. Grafted stock, very

ornamental, large foliage, green with white margin. 2-year stock, 25 cents each.

Euonymus Japonica Variegata. Variegated variety, conspicuously margined with white and constant in its coloring. 25 cents each.

Euonymus Japonica Aurea. With yellow markings on foliage. 25 cents each.

Jasmine, Grand Duke. This jasmine is very easily grown, even small plants bearing a profusion of very double creamy white flowers, having a delicious perfume. It can be stored in a dry cellar in winter. Price 25 cents each. \$2.50 per 12.

Pittosporum Tobira. One of the finest evergreen shrubs, well adapted for trimming, grows round and compact. 50 cents each.

Rosmarinus Officinalis. (Rosemary, or Old Man.) This old favorite is very effective for a border or planting in a clump. Strong plants, 25 cents each.

Hardy Jasmine, Officinale. Pure white, fragrant, very easy to grow, can stand our summer heat well and is hardy in winter; blooms for a long period in summer. Price 25 cents each.

Cape Jasmine. Flowers large, white, fragrant; foliage rich, glossy. Price, large plants, 25 cents each; one year, 20 cents.



Magnolia Grandiflora. Its large, shining green foliage, accompanied in summer with large, fragrant, milky-white flowers, places it preeminently above all ornamental trees. This, as well as all other evergreens, should be handled and planted very carefully, as they are extremely sensitive to injury from drying. Their roots should never be allowed to get dry when out of the ground. In planting, the soil should be pressed firmly about the roots with the roots curled in shallow holes. 2 to 3 feet, 50 cents; 5 feet, \$1.00 each.



Bonita Arbor Vitae Originated in the Comal Springs Nursery.

Cone-Bearing Evergreens

We do not think we exaggerate when we say that we have the largest stock of the cone-bearing evergreens in the State. We have, in fact, almost overstocked ourselves with them and can afford to sell extra fine plants at a very low price. We grow all and only such varieties as succeed in Texas. Sizes are from 1 foot up to 6 feet, and the prices, as you will notice, are lower than those of any nursery, taking into consideration the quality of the plants.

Ich glaube nicht zuviel zu sagen, wenn ich behaupte, dieses Jahr den größten Vorrath und die feinsten Exemplare von immergrünen Nadelhölzern in Texas zu haben. Ich habe alle Arten, welche hier gedeihen und alle Größen von einem Fuß bis zu sieben Fuß Höhe und wird mein Preis niedriger sein, als irgendwo anders für Waare derselben Güte.

Bonita. A new Arbor Vitae of the greatest merit; a chance seedling originated in our nursery. It is of a perfect round growth, dwarf and as round as a ball; has the beautiful green color of the Golden Arbor Vitae, but the leaves are much thinner. This is the only Arbor Vitae to plant in the cemetery, as it has the

round, compact form and never gets over three feet high. It is a seedling among 3000 Compacta Arbor Vitae, is better than the Biota Nana and more dwarf than any yet in existence. We have some nice round plants, 1 to 2 feet high, at 50 cents each; \$5.00 per dozen. 2 feet and over, 75 cents each, \$7.50 per dozen.

Golden Arbor Vitae. This is the handsomest and most compact of the Arbor Vitae; green, with a beautiful golden tint. True grafted trees, 1 to 2 feet, 35 cents each. Two or three feet, 50 cents each, \$5.00 per dozen.

True Berkman's Biota Aurea Nana, a new Golden Arbor Vitae of a dwarf and compact habit, a perfect gem for small gardens or cemetery lots, will not grow higher than 6 to 8 feet. 24 to 36 inches high, 50 cents.

Chinese Arbor Vitae. Dark green, vigorous, hardy, desirable, 3 to 5 feet, 25 cents each; small 15 cents; \$10 per 100.

Golden Pyramidalis Arbor Vitae. Like the Golden, but grows tall and slender. A very ornamental sort. Do not confuse this with Cupressus Pyramidalis. 3 to 5 feet, 50 cents each. 1 to 2 feet, 35 cents each.

Compacta Arbor Vitae. A seedling, compact growing Arbor Vitae, of a lively dark-green color and of globular shape. 2 to 3 feet 50 cents. Very fine stock. 1 to 2 feet, 25 cents each.

Rosedale Arbor Vitae, very compact growth, with sugar loaf form of the Golden Arbor Vitae, but with fine, cedar-like foliage of a bluish cast. Makes a beautiful ornament; perfectly hardy and of vigorous growth; the most beautiful of all Arbor Vitae. 3 to 4 feet, 50 cents each. 1 to 2 feet, 35 cents each.

Irish Juniperus (Juniper.) A handsome

evergreen shrub, with dark green foliage and somewhat drooping branches. 1 to 2 feet, 50 cents each.

Cupressus Pyramidalis. This is a beautiful, tall, columnar evergreen; does well in Texas, a little tender in far North. Pot grown, sure to live. 1 to 2 feet, 50 cents each.



Strong field grown, two years, 35 cents each, \$3.50 per dozen, except where otherwise noted; three years old, extra strong, 50 cents each; \$5.00 per dozen.

Light 1 and 2 year, 25 cents each, \$2.50 per doz.

Of all the flowers which man has taken into his care, the rose has reached the highest degree of popularity. It is the queen of flowers, the flower of the poets, and will always be the dearest of flowers to the lovers of the beautiful.

While wild roses are met with in almost every country, the cultivation of the rose began probably at the same time when the cultivation of man began, and with the cultivation of man that of the rose has kept pace, being now at the same height of development as is humanity.

Of the many thousands of varieties which have for centuries been introduced by the hybridizers, those of each succeeding century show a marked improvement over those of the foregoing. Of the roses which were considered the best only a century ago, very few are grown to-day.

Many hundreds of different varieties have been tried on our grounds, and of all only such are described in the following list, which in our judgement, are the very best for outdoor planting.

Fortunately we live in a climate where even the tender roses stand the winter without cover, and any of the roses in this catalogue may be planted outdoors.

Plant your roses in an open place; never try to grow roses in the shade of trees. The plants you receive from us are grown by the latest methods of cultivation, which we practice together with a means of accumulating power and strength in the young plants, and

which is just the opposite from forcing roses in greenhouses for bloom. Do not set out your roses the way you get them, but trim off at least one-half of the wood. Slow-growing sorts should be trimmed more severely than the quick-growing varieties. We are one of the largest Rose growers in Texas and have this year 40,000 extra strong plants to offer.

Mein Vorrath an Rosen ist der größte in Texas und die Auswahl der Sorten ist die reichste.

Meine Rosen sind starke, im freien Felde gewachsene Büsche, die den ganzen Sommer hindurch geblüht haben, und sind ja nicht mit den im Norden in Treibhäusern gezogenen jüngeren Topfpflanzen zu verwechseln. Diese Rosen, welche ich hier offerire, werden von Andern zu 50 bis 75 Cents angeboten. Folgende Liste enthält die besten und allerfeinsten Rosen, welche es giebt, und es kann keine bessere Auswahl getroffen werden. Wir haben dieses Jahr 40,000 Stück gezogen.

CRIMSON AND RED

Cardinal. Rich cardinal red; large; full and very free; very fragrant and sweet. The best red rose for the South, opens well and has fine buds.

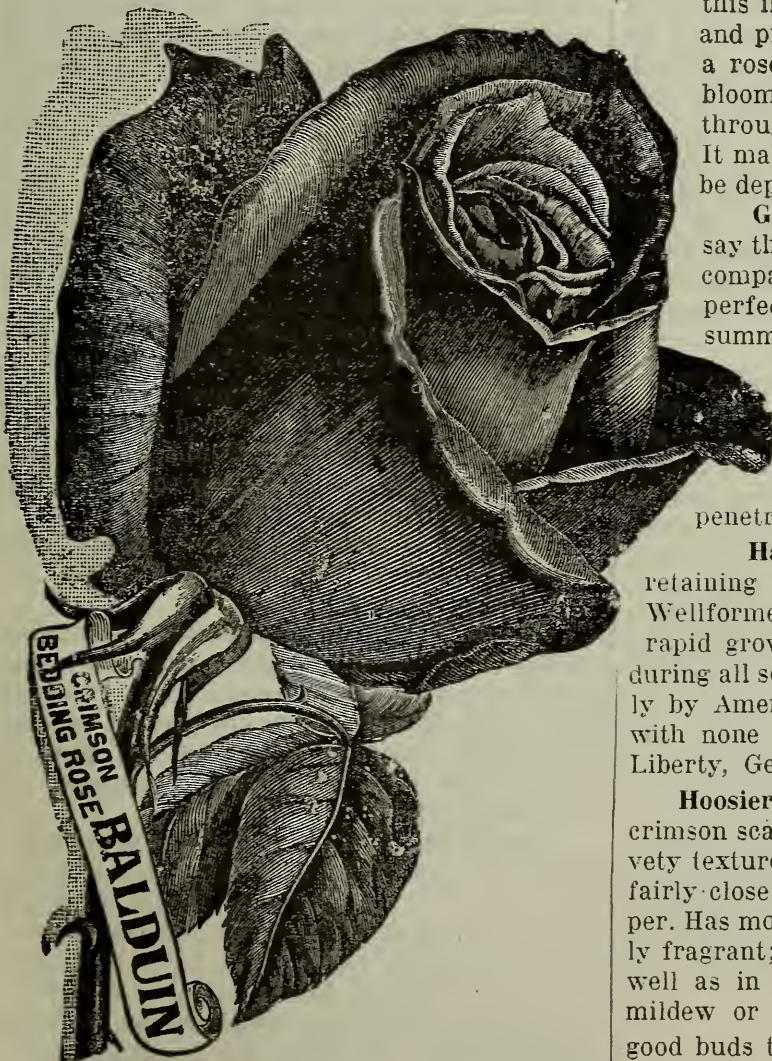
Baby Rambler. (Mme. L'vasseur.) This rose is so well known as hardly to need a word of description; it is a dwarf form of Crimson Rambler, which produces flowers absolutely continuously. Invaluable either for pots or for outside bedding.

Crimson Queen. A beautiful crimson Hybrid Tea of the Hadley type, but different in tone; a fine grower with broad, beautiful foliage. 50 cents.

Etoile de France. Hybrid Tea. The gold medal rose of France, and claimed by the

raiser, J. Pernet Ducher, to be the finest rose he has ever sent out. A very strong, vigorous grower, with handsome green-bronzy foliage and exceedingly free flowering. The flowers are very large and borne on long, stiff stems; color a clear red crimson velvet. Very fragrant and keeps well. Without any exaggeration we may assert that Etoile de France will be appreciated by all lovers of the queen of flowers.

Eugene Boulet. This is one of the best red bedders. First of all it is a good grower, short-jointed and free branching, with abundant and beautiful foliage; it is easily suited as to soil and position, and produces flowers in great abundance; the blooms are large and full, of substantial form and texture. We fully expect this variety to rank at the very top of red garden roses for massing. Color, deep crimson and carmine, a sheet of gorgeous color.



Balduin. A new Hybrid Tea Rose. About the best crimson outdoor bedding rose we now have. It is very strong growing and healthy and produces very large and double roses of a glowing carmine color, which are as sweet as a June Rose.

Madam Charles Wood, a true perpetual bloomer. The flowers are extra large, very double and full and quite fragrant. Color is a bright, fiery scarlet, passing to a fine rosy crimson, elegantly shaded with maroon.

Mad. Mason. It is entirely hardy, blooming nearly all the time, bearing numbers of large, full double, flowers of unusual beauty and wonderful fragrance; clear, bright rose. Distinct and charming. A great rose.

Olivia. Deep rose color; a very strong, free growing Hybrid Tea resembling General McArthur in habit, and Balduin in color and form of blooms.

Freiherr von Marshall. Dark crimson; tea; buds long and pointed; flowers full; valuable red bedder. 35 cents.

General McArthur. A grand new everblooming crimson scarlet rose. In all the rose family we know of nothing that can compare with this in dazzling color, fragrance of flower and profusion of bloom. Is as fragrant as a rose can be, has good sized flowers, blooms continuously the whole season through, and gives fine stems for cutting. It makes a strong, stately plant, that may be depended upon for strong flower shoots.

Gruss an Teplitz. We unhesitatingly say that for bedding, no rose we offer will compare with Gruss an Teplitz. It is a perfect sheet of rich crimson scarlet all summer. When we say that we know of no rose that has such bright colors in it as this variety, we are stating facts. The nearest we can describe it is, that it is the richest velvety crimson overlaid with the brightest penetrating scarlet.

Hadley. Deep, rich, velvety crimson, retaining its brilliancy throughout the year. Wellformed buds, and large double flowers on rapid growing, long and stiff stems, prolific during all seasons, with a fragrance excelled only by American Beauty. Possesses the merits, with none of the defects, of its progenitors, Liberty, General McArthur and Richmond.

Hoosier Beauty. The color is magnificent crimson scarlet with darker shadings and a velvety texture. Bud long and pointed; can be cut fairly close and is a splendid keeper and shipper. Has more petals than Richmond; deliciously fragrant; a good saleable rose in summer as well as in winter. Clean in growth, does not mildew or spot. This variety produces more good buds to the plant than any red rose now before the trade. 50 cents.

Laurent Carle. An extremely vigorous grower of erect branching habit and fine dark green foliage; long buds are borne on long stems, opening into large flowers of perfect

form, just full enough to open freely. Color brilliant velvety carmine. A very promising variety.

Marie de LaSalle. As free in growth as Teplitz, flowering continuously; buds long and elegant opening into lovely blooms, of fine form and large petals, color bright, deep cerise; reverse of petals shaded carmine; large and full. A decidedly free bedding rose. Price, 2 years, strong plants, 35 cents each.

Magna Frano. Of all the roses which have been introduced there is none which has measured up better to the ideal standard than this. Color is rich cardinal red. Is a very strong grower with a heavy flower. Fragrance is very strong and sweet.

Milady. A good red rose, quite full, of beautiful form, splendid in texture, free in growth and bloom; rated high by some of the best growers, it is a very profitable variety. 40 cents.

Meteor, a velvety red everbloomer of the deepest glowing crimson, as fine as a Hybrid. Flowers very double and petals slightly recurving. A beautiful open rose.

American Beauty, hardy rose, of largest size, having the everblooming qualities of the Tea Rose, with the delicious odor of the Damask or Moss Rose. In color it is brilliant red, shading to a rich carmine crimson. The flowers are borne on long, stiff stems, hence a splendid rose for cutting.

Prince E. C. d'Areberg. Brilliant, fiery scarlet, large and perfect, of massive form, erect and vigorous in growth; a most promising red variety, well worth a careful trial as a forcer.

Rhea Reid. A fine double red, very free in bloom and growth; makes good flowers in summer. An extra good bedder. Flowers very large, perfectly double, and of fine deep red color.

Richmond. The best red rose yet produced; thrives under the same conditions that suit Bride and Maid. Easy to grow; of strong, free habit. Stem, foliage, color, all are ideal for quick opening, free flowering. A fragrant red rose of the Liberty type, but producing four fine buds to Liberty's one.

Robin Hood. This new rose has a glorious rosy-scarlet color that is at once soft and bright and lasting; the bloom is full and beautiful; build of the Hybrid Perpetuals. It is a grand grower, heavy caned and profuse in foliage; flowers very freely produced.

PINK

Antoine Rivoire. A grand fancy bedding rose, very large, very full, perfect in form. Color flesh tints with orange center and carmine edge.

Bon Silene. (Tea.) An old-time favorite,

that everybody knows. Strong grower, fine buds, color light pink, shaded salmon; forces well.

Bridesmaid, the pink sport of Catherine Mermet. It is a stronger grower than its parent, has handsome foliage and the flowers are a much livelier pink. The most popular pink rose ever introduced.

Burbank, raised by Mr. Luther Burbank of California, known the world over as the "Wizard of Horticulture". The color is cherry crimson; it is, in other words, the very deepest and brightest pink rose in cultivation. One of the freest bloomers and perfectly hardy.

Catherine Mermet, a fine pink rose; a good grower and bloomer; one of the best pink roses for outdoor culture.

Jonkherr J. L. Mock. Although introduced only four years ago, this beautiful rose quickly found its place among our best bedding varieties. The flowers, which are produced in the greatest freedom on long, stiff stems, are of large size and perfect form, of a deep imperial pink, the outside of the petals silvery rose white; highly perfumed.

Clara Watson, a beautiful rose of large size, very fragrant and fine form, color salmon pink, blended with blush pink on outer edge of petals, shading to yellow in center. Strong grower and profuse bloomer.

Champion of the World. A remarkable new sort; combines the most desirable qualities. It is a perpetual bloomer, summer and winter. The flowers, which are produced in the greatest profusion, are perfectly double and of perfect shape. They are of a deep rosy pink and delightfully fragrant.

Duchess of Albany, red La France; very large; deep pink, full and highly perfumed. One of the finest pink roses.

F. R. Patzer: Free-flowering character; growth very robust and erect; with large and handsome foliage. The blooms are produced with great freedom; they are carried on long stiff stems. The color is creamy buff, back of petals warm pink, as it opens it changes to light orange pink.

Graf Zeppelin. To our mind this is the most beautiful of all the hardy Rambler roses; every retail florist in the country should grow it; one of its finest points is that it comes into bloom two weeks earlier than Crimson Rambler, which makes it doubly valuable; the color is pure bright rose of irresistible shade; the individual flowers are large for the type, borne upright in sprays and of very elegant form. 50 cents.

Killarney Brilliant. The deep crimson-pink sport of Killarney. This variety in the majority of establishments is superseding old Killarney. 50 cents.

Killarney. No rose has attracted so much attention as Killarney. The color is brilliant sparkling pink; the flowers are extra large and full, with broad, thick petals and delightful tea fragrance.

Wm. R. Smith. As a summer bedder this variety ranks above all others; produces immense quantities of fine flowers of creamy white with pink shading; strongest growing of all the summer bedders, making a fine branching bush in one year's time. Has fine firm, glossy foliage; long flowered stems.

La France. Perhaps no rose is more widely known or more highly valued for a garden rose than La France. It is a Hybrid Tea of very beautiful form and color; an early and constant bloomer, producing a wonderful profusion of buds and flowers all through the growing season. It is exceedingly sweet and handsome, and altogether one of the loveliest and most desirable roses one can plant. The color is a delicate shade of peach blossom, changing to amber rose, elegantly tinged with crimson.

Lady Alice Stanley. A beautiful two-tone pink, pure rose on the outer petals, shell-pink within; the bud is long, pointed and plump and opens into a perfectly rounded rose of large size, composed of broad petals of heavy texture; the foliage is noticeably large and fine. Very high class, and deliciously fragrant. 50 cents.

Mme. Caroline Testout. A magnificent Hybrid Tea, of the very loveliest shade of pink.

Maman Cochet. A magnificent pink rose of the Mermet type. The grandest of outdoor bedders in pink, making an enormous growth in one season. Color very bright rose, with shading of yellow in center.

Malmaison. This is certainly one of the choicest, and as a rose for general cultivation is unsurpassed. The color is a beautiful rich, creamy flesh, with a rose center, flowers very large, perfectly double and deliciously fragrant; a strictly first-class rose in every respect.

Marie Van Houtte. In the open ground it is truly magnificent. The flowers are extra large, very double and full, and are deliciously scented; the color is a pale canary yellow, passing to rich creamy white shaded with rose. Grows strong and sturdily.

My Maryland. Grand pink forcing variety, which may displace Killarney; grand grower very full in bloom, easy to manage.

Mrs. George Shawyer. Wonderfully free in bloom, profuse in production of good strong breaks, and of fine leathery foliage. Color, bright peach-pink; buds long and well filled, carried on 3 to 4 feet stems; a first favorite with a great many growers. We grow own root plants. 50 cents.

Paul Neyron, deep pink, very large and

extra fine rose, and very free bloomer. A rose without thorns.

President Taft. This is without question the most remarkable of all pink roses. It has a shining intense deep pink color possessed by no other rose. It is a fine grower, free bloomer, good size and form, fragrant, and in a class by itself as to color. Mr. Frank Good, who is probably familiar with more roses than any man in America, says: "Talk all you want to about the rose President Taft, and then you will not say enough."

Radiance. A grand free-growing, big habit-ed rose, with long stems, and globular blooms of intense rose pink color; very fragrant. A fine summer variety and the finest of all the outdoor pink bedding roses. Always in heavy demand.

Rosemary. A beautiful rose of shining, silvery pink, recommended for bedding. Very large and very double; sturdy grower with stiff stems and large foliage; flowers freely produced.

Vick's Caprice. This is the only hardy rose that has any variegation. It is a vigorous grower and bears large and fragrant flowers of a bright rose, distinctly striped with crimson.

Wellesley. This grand rose (Liberty crossed with Bridesmaid) retains the form of Liberty with the fullness of Bridesmaid, and in color is a beautiful shade of pink, the outside of the petals being bright and clear with a silvery reverse. It is a very vigorous, healthy grower, carrying the flower on long, stiff stems. It is free flowering and possesses fine keeping qualities.

Col. R. S. Williamson. Satin white with deep blush center; blooms very large, full, of perfect form, with high, pointed center; canes rigid and freely produced; petals round and of great substance. A grand rose for any purpose.

William Shean. Purest pink, petals shell-shaped, four to five inches long; flowers of immense size and substance and of perfect form; free blooming and distinct. You will have to travel a long ways before you beat this rose for the garden.

Mme. Segond Weber. Rosy salmon, one of the grandest novelties of recent years; the bud is long and pointed, opening into an enormous bloom which deepens its color until fully expanded, when it is as impressive as American Beauty.

YELLOW

Alexander Hill Gray. The respect of all Rose-lovers warrants the issuing of a champion rose, and a tea, at that, to pay due homage to one of the world's greatest tea rose growers. It is wonderfully floriferous, every shoot being

crowned with a flower bud, which develops into a bloom of very large size, great substance and perfect formation, with high-pointed center, from which the petals gracefully reflex. The best and largest pure yellow tea rose yet introduced. Its color is a solid deep throughout, Marechal Niel-like lemon-yellow; strongly tea scented.

Alliance Franco-Russe. (Tea). Flowers bright yellow, shading to salmon at the center; bright and pleasing; has a strong, upright stem and long bud; vigorous and hardy and a free and continuous bloomer. Very full and double.

Arthur Goodwin. Coppery orange-red, passing to salmon pink, as the flowers open; a superb combination of color. Flowers medium to large, and full; vigorous and free branching; should prove a valuable and showy bedder.

Blumenschmidt. Pure citron yellow, outer petals edged tender rose, a sport from Francisca Krueger, which it resembles in form, but is more vigorous in growth.



Souvenir de Pierre Notting. This is a beautiful rose, seedling of Marechal Niel and Maman Cochet, with beautiful, closely-set foliage and strong, sturdy habit of growth. The bloom is very large, perfectly full, of elegant form, has a beautiful long bud. The colors are very bright, distinct and clear, and have no unpleasant tones — orange yellow, bordered in carmine rose.

Coquette de Lyon. A free blooming light yellow variety, called the yellow Hermosa. A very hardy variety.

Francisca Krueger, a strikingly distinct and handsome rose. One of the very best for open culture. The flowers are deeply shaded copper-yellow in color and are of large size. Always in bloom.

Helene Gambrier. This lovely copper-yellow Hybrid Tea everblooming rose will fill a long-felt want from the fact that everybody has been looking and longing for a good yellow rose that combines vigorous hardiness with rich color and free blooming qualities. This Helene Gambrier does. Flowers are of a delightful shade of deep, rich coppery yellow.

Mrs. Aaron Ward. This rose is a real joy to the grower and absolutely distinct. One of the most delightful roses of recent years in a color that catches the eye at once. Coppery orange in the open bud, golden orange when partly developed, pinkish fawn of lovely shade when fully open, when it looks like a full, fluffy silk rosette. 35 cents each.

Mme. Jenny Gillemot. Buds long and pointed, deep saffron-yellow; immense; opens very freely. A fine upright grower of branching habit; exquisitely beautiful, very large in size, bud very long and pointed.

Mme. Cecile Brunner. Synonyms: Mignon and Sweetheart. The tiny pink Polyantha rose, extremely useful in the cut flower trade, where it has acquired new popularity the past two years: forces nicely in winter time.

Mme. Constant Soupert. Has enormous rounded buds of deep, brassy yellow, shaded and edged in rose. A grand fancy variety.

Ophelia. Is grown by every wide awake florist — the Queen of fancy roses — orange salmon. No foreign variety ever attained such wide popularity so promptly, and it tops the list of profit. It has the handsomest foliage in the family, ample, large and of wonderful texture; noted for its splendid stems; it is the most fragrant of forcing varieties, with the full June-rose fragrance. Ophelia stands charged with pushing Killarney off the stage; there ought to be room for both. 50 cents.

Perle des Jardins, golden yellow, large, double, free bloomer; the finest yellow rose in cultivation.

Rose Gubert, color canary yellow, deepening at the center; bud long, producing a large

flower; extremely free in growth and bloom.

Sunset, a well known tea rose of large size, double, fragrant, and in color a most remarkable shade of rich golden amber, elegantly tinged and shaded with dark ruddy copper. Great bloomer.

Tipperary. This is an Irish rose, a seedling of Mrs. Aaron Ward, which it somewhat resembles: it makes long, slender, stiff stems in a very short time, many of them to the plant, and every one tipped with a yellow flower. The bud is slender and sharply pointed and opens into a full rosette as Ward does. It is a great improvement on Ward in its steady production of bloom throughout the season, and shows no inclination towards resting in mid-winter. The color is clear yellow; it will be largely used as a corsage rose. 40 cents.

Lady Hillingdon. A very popular yellow forcing variety, already planted in considerable quantity in this country. It is of very quick, free growth with pretty, narrow foliage, and is one of the freest in the tea section in the continuous production of flowers. The buds are very slender and graceful, a deep shade of yellow which does not easily fade. Everybody can grow this pretty yellow rose and have it in quantity.

Safrano. This is a splendid old time rose that has not been superseded by any newcomer of its class or color. It grows vigorously and has the vitality necessary to produce a continuous crop of flowers. The color is bright apricot yellow, changing to orange and fawn, sometimes tinted with rose; very fragrant.

Tip-Top or "Baby-Doll". This delightful little sweetheart rose is an everblooming polyantha, and will fall into the Cecil Brunner class for choice corsages and for fine, dainty floral work. The color is absolutely new, and quite startling in its brilliancy — golden yellow, tipped with clear, bright cerise; the arrangement reminds one of Mme. Watteville. The little buds and bloom are very perfect in form, long and pointed, borne single or in small clusters. Foliage narrow and sharply pointed. A beautiful Baby Rose. 40 cents.

Etoile de Lyon. Many new varieties of yellow rose have been introduced since this was a novelty, but none combine more good qualities than this good old sulphur-yellow rose. Buds are of beautiful shape and flower is very full.

Sunburst. This big yellow rose is in a class by itself; it has proved a valuable summer variety and has made many friends; it is also a fine cut-flower variety throughout summer, and is a marvelous keeper, the color being beautiful, whether it comes light or deep orange; being an all-the-year round rose makes it profitable. 50 cents each.

Mrs. Arthur Waddell. A strong rampant

grower; buds long and pointed; rose scarlet, opening coppery salmon; large and semi-double, but a wonderful keeper. One of the showiest roses extant; a splendid forcer.

Madam Charles Lutand. Strong grower. Color is a light chrome yellow with slightly tinted rosy scarlet on the outer petals. 50 cents.

WHITE

Catherine Zeimet. (White Baby Rambler). This is surely a beauty. It grows to a height of 15 to 20 inches, and produces double pure white flowers in wonderful abundance. It has a fragrance similar to Hyacinths. Of free compact growth and very attractive, a sheet of white and always in bloom.

Double White Killarney. With many growers used in preference to the original White Killarney, as it has many more petals and makes a finer flower for warm weather use. 50 cents.

Kaiserin Augusta Victoria. This is one of the grandest of all roses. It is a strong, vigorous grower, producing buds and flowers of enormous size. Color pure ivory white. We have no hesitancy in saying that this rose is unequaled by any other in its color. A grand garden rose on account of its vigorous growth and hardiness.

Frau Karl Druschke. (White American Beauty.) Form of flower identical with American Beauty, color clear white. Beautiful in bud and half open.

Bessie Brown. This rose is considered one of the finest of the roses of late introduction, and is well worthy the place it occupies among roses. It is of the Hybrid Tea class and will stand frost if slightly protected. Blooms are of enormous size; of heavy substance and perfect shape, lasting splendidly when cut. The color is snow-white, faintly flushed and tinged with pink. A fine, strong, free grower; producing long stems.

Clothilde Soupert. Flowers are borne in large clusters all over the bush; they are large, perfectly full and double, and most deliciously sweet; color beautiful creamy white, splendidly tinged with amber, deepening at the center to a clear bright pink, and sometimes both red and white roses are borne on the same plants; very vigorous bush.

M. Sharman Crawford. The buds are most beautiful, of immense size, and are borne up high on massive stems, and with their round, full, heavy form carry an air of grace and dignity quite unusual. The flowers are the clearest, snowiest white, and are arranged in the most faultless symmetrical manner.

Marie Guillot, moderate grower; white, large, very full, none finer.



The Bride. This is decidedly the most beautiful white tea rose. It is a sport from Catherine Mermet, with which it is identical in growth and shape of flowers. The flowers are very large and double, on long stiff stems of fine texture and substance, and last a long time after being cut; makes one of the best varieties for corsage wear or bouquets. During extremely hot weather it becomes a pinkish white, at other times a beautiful pure white.

White Cochet. The charming new white tea rose. Another new American rose. Its habit is exceedingly strong and upright, like its parent, Maman Cochet. It possesses the same large, beautiful, healthy foliage, and it is a most profuse and constant bloomer. The flowers are of enormous size, round and full, pure, clear, snowy-white throughout, and are delicately tea-scented. It is without doubt the largest white rose, both in bud and flower.

White Malmaison. The color is a pure waxy snow-white, and sometimes has a lemon

tint, and to those who desire a fine double flower when fully expanded, this will meet your wants as it is beautiful when full-blown. Resembles that grand old rose "Malmaison" in shape and fullness.

Snow-Flake. One of the most beautiful white roses I have ever grown. The flowers are not very large, but always open to perfection. A very quick-growing variety, and one that produces a tremendous amount of flowers the year around.

Madison. This is the "money maker" among the cut flower roses, and is a greatly improved Bride. The best feature of Madison is that the foliage does not mildew. After being planted and well established Madison will cut as many flowers as Killarney. Pure white, long stems. 2 years old, 35 cents each.

White La France. This rose is identical with LaFrance, except in color, which is almost pure white. The shading in fawn it has only enhances its beauty. A grand rose.

CLIMBERS

Climbing Caroline Testout. We already had such a magnificent list of climbing roses that we hesitated to add another variety, until we found the Climbing Testout. All that is necessary for us to say is that it is an exact counterpart of the Madame Caroline Testout, ex-heat and drought.

Cloth of Gold. Sulphur yellow, deeper center, large and double, very free bloomer.

Climbing American Beauty. A seedling from American Beauty with Wichuriana and tea blood in its veins. Same color, size and fragrance as "American Beauty" with the addition of the climbing habit, good foliage and better blooming qualities. Blooms 3 to 4 inches across; has proved perfectly hardy and stands heat and drought.

Climbing Bridesmaid. The flowers are simply Bridesmaid. Clear dark pink; in bud they are superb beyond anything we have ever seen. This is one of the most valuable additions to the climbing tea roses made in recent years.

Climbing Cothilde Soupert. Rich creamy white flowers, sometimes tinted with blush and borne in immense profusion. A fine hardy climbing rose that will bloom all the time.

Climbing Kaiserin Augusta Victoria. Flowers same as the Kaiserin, which it too generally known to require description here. Stout canes, very quickly covers verandas etc. Always in bloom.

Climbing Marie Guillot. It is one of the most rapid growers, and plants making a growth of ten feet in one season. The color is pure snow white, sometimes faintly tinged toward the center with pale yellow. Very hardy and a free bloomer.

Climbing Meteor, is of strong, vigorous habit of growth, producing in great profusion throughout the season magnificently formed buds and flowers, which in color are of a dark velvety crimson, the equal of any rose in cultivation, and possibly more glowing than its illustrious parent.

Climbing Wooten. Perfectly hardy, grows with wonderful vigor. It is a strong rampant climber with large heavy insect-proof foliage. It produces in most wonderful profusion its superbly formed flowers, which are bright magenta red, passing to violet crimson, richly shaded. This variety will give satisfaction from the minute you get it.

Crimson Rambler. The most popular out-of-door climber of today; a rapid producer of long heavy canes, reaching a height of ten to twenty feet in one season; rich clusters of bloom form a mass of vivid crimson beauty until late in the season. Perfectly hardy in the most trying climates, being a native of Japan

Dorothy Perkins. Beautiful, hardy pink, blooming in clusters. An extra good climber for the South.

La Marque, purest white; a splendid climber and the freest and finest for winter blooming; has to be trimmed and trained well.

Marechal Niel, beautiful, deep yellow; very large, full globular form, sweet, free bloomer; the finest climbing rose; two years, budded, 50 cents, one year 35 cents each.

Veilchenblau. The Blue Rose. Color steel-blue or amethyst, sometimes reddish lilac; a seedling of Crimson Rambler, with double florets in fine clusters; it is probably the most beautiful grower, with handsomest foliage of any climbing rose in existence; the leaves are exceedingly long and slender with high gloss. Indications point to its becoming a very popular novelty.

Pillar of Gold. The color is a deep yellow, flushed with coppery yellow. Reverse of petals shows touches of bright rose. Base of petals deep golden yellow; very fragrant.

Reine Marie Henriette, a strong-growing climber, making a great pillar rose; flowers full and well formed; rich, brilliant crimson. A fine companion of Marechal Niel.

Ruth Vestal. Climbing rose. It blooms through the entire season. Good grower, small plants have grown ten to fifteen feet in one season. It is an exceedingly healthy rose, possessing every attribute that a perfect rose should have. The fragrance is delicious. The color is pure snow white, sometimes faintly tinged toward the edge with pale blush. We consider this one of the finest white ever-blooming roses ever sent out. Wherever Marechal Niel is grown, this rose will undoubtedly equal it in beauty of flowers. It is really a grand rose and we recommend it.

Tausendschoen. Soft pink, blooming in clusters; the branches look like large pink ostrich plumes; a splendid forcing variety under the same treatment given the Crimson Rambler. Very valuable.

White Dorothy. Pure white sport from the beautiful Rambler Dorothy Perkins.

William Allen Richardson. The coloring of back of petals is a bright yellow, the center highly colored with glowing copper and rose; first-class climber.

White Banksia. White, small flowers, very fragrant; good climber, blooms early in the spring. 35 cents each.

Yellow Banksia. Yellow, small flowers; very fragrant. Both Banksia roses are very hardy. 35 cents each.

Climbing, Clinging and Creeping Plants

These long-lived plants are the most popular and best for the South to cover arbors, galleries, old trees etc. in a very short time.

Diese ausdauernden Kletterpflanzen sind die beliebtesten und besten für den Süden und eignen sich besonders für Lauben, Verandas und für Lieberranken von alten Bäumen, Zäunen etc.

Kudzu. The famous Chinese Kudzu grows more in three months than most vines do in five years. Adaptable to porches, arbors, fences, rockeries, old trees etc. If you wish a vine that will grow anywhere in the best or poorest soil, then plant the Chinese Kudzu. The large, bold, green leaves afford a dense shade. The clusters are deliciously fragrant. 15 cents each, \$1.50 per 12; extra large roots 25 cents each.

Ampelopsis Engelmanni. Engelmann's Creeper. A beautiful climber of rapid growth. 2-year plants, 25 cents.

Ampelopsis quinquefolia. (Virginia Creeper.) A vigorous native climbing variety, leaves divided into five bright, green, toothed leaflets, in autumn changing to gorgeous shades of red and scarlet. 2-year plants, 25 cents each.

Ampelopsis Veitchii (Boston Ivy). This plant resembles very much our ivy, but grows very rapidly, covering a large wall in one season. The foliage is small and neat and blood-red color in fall. 25 cents each.

Climbing Euonymus. (Euonymus Sieboldii.) Considered a better evergreen vine than the English Ivy. Will grow 20 or more feet; has broad, glossy leaves. 25 cents each.

Ivy, Hardy English. The hardy evergreen vine that remains so all the year, making it one of the most valuable of all hardy vines. It is used in covering walls and has become popular for covering graves, especially in the shade, where grass will not succeed. Price 25 cents each, pot grown.

Antigonum Leptophus (Queen's Wreath) a splendid plant from Central Mexico, producing rose-colored flowers in racemes two feet long. The profusion of bloom is such as to give the resemblance of roses at a distance hence its name "Rosa de Montana" or Mountain Rose. Will live out in the winter anywhere in the South. The vines are killed by frost, but it quickly shoots up in the spring and develops its flowers from May until frost. This is one of the most lovely vines. Bulbs

15 cents each, \$1.50 per dozen, \$10.00 per 100. 2 years large bulbs 25 cents each.

BIGNONIA.

Strong grafted plants, of the very best varieties.

Mme. Collier. Dark red flowers, with pale yellow to the inside. 25 cents.

Coccinea. Long slender flowers, red, striped yellow. 25 cents.

Speciosa. Long pointed flowers borne on long stems, flowers light yellow. 25 cents.

Bignonia Grandiflora. The well-known Trumpet creeper, that grows wild in southern Texas, flourishes everywhere under the most unfavorable conditions, and is always pretty and satisfactory. We had only one variety before and not much was said about it, but when we secured **Bignonia Grandiflora** the result was a great surprise. A rare and beautiful variety. Twelve to sixteen flowers on one truss. Flowers 4 to 5 inches across; salmon, veined crimson. 2-year-old strong plants, 25 cents each.

Clematis Paniculata, one of the most beautiful of our hardy climbing vines. The flowers are pure white, and are borne in great panicles or clusters of bloom, which fairly cover the plant so that it is a mass or sheet of fleecy white. The fragrance is delicious, resembling the English Hawthorne blossoms, and so subtle and penetrating that a large plant in bloom fills the air with exquisite fragrance. 25 cents each.

Clematis Drummondii. Many varieties of Clematis grow wild in Texas. Among them this is the best. When in bloom the plant is covered with white flowers, which come in such profusion that it attracts attention along fences in the moonshine, being as white as cotton. Flowers are not fragrant. A rapid climber. Strong plants, 25 cents each.

Wisteria Sinensis. (Chinese Wisteria), a quick-growing climber, producing long racemes of purple flowers. 25 cents each.

Wisteria. (Sinensis Alba), flowers borne in long, drooping clusters of pure white color; very elegant; strong two-year plants. 25 cents each.

Vinca, Evergreen, (Trailing,) dark green, 15 cents each; \$1.50 per dozen.

Vinca Harrisemii. (Trailing.) Two shades of green and gold, strong plants 15 cents each \$1.50 per dozen.

HONEYSUCKLES

Coccinea. Flower red, good bloomer, stands Texas sun well. 25 cents.

Fuchsia-Flowered, a new perpetual flowering, weeping Honeysuckle. Its flowers are long and trumpet-shaped, beautiful coral red; borne in large clusters, and drooping like a Fuchsia. It is a strong rapid grower with beautiful leaves. 25 cents each.

Halleana. One of the finest Honeysuckles grown. Blooms from May till November; is always evergreen and one of the most fragrant; flowers white, changing to yellow. 25 cents each.

Rosea. Evergreen, dark green foliage; young sprouts have pink leaves; flower white with pink.

Sinensis. A good variety with white blooms, excellent for designs. 25 cents.

Callida. Flowers rose color on the outside, yellow in center. 25 cents.

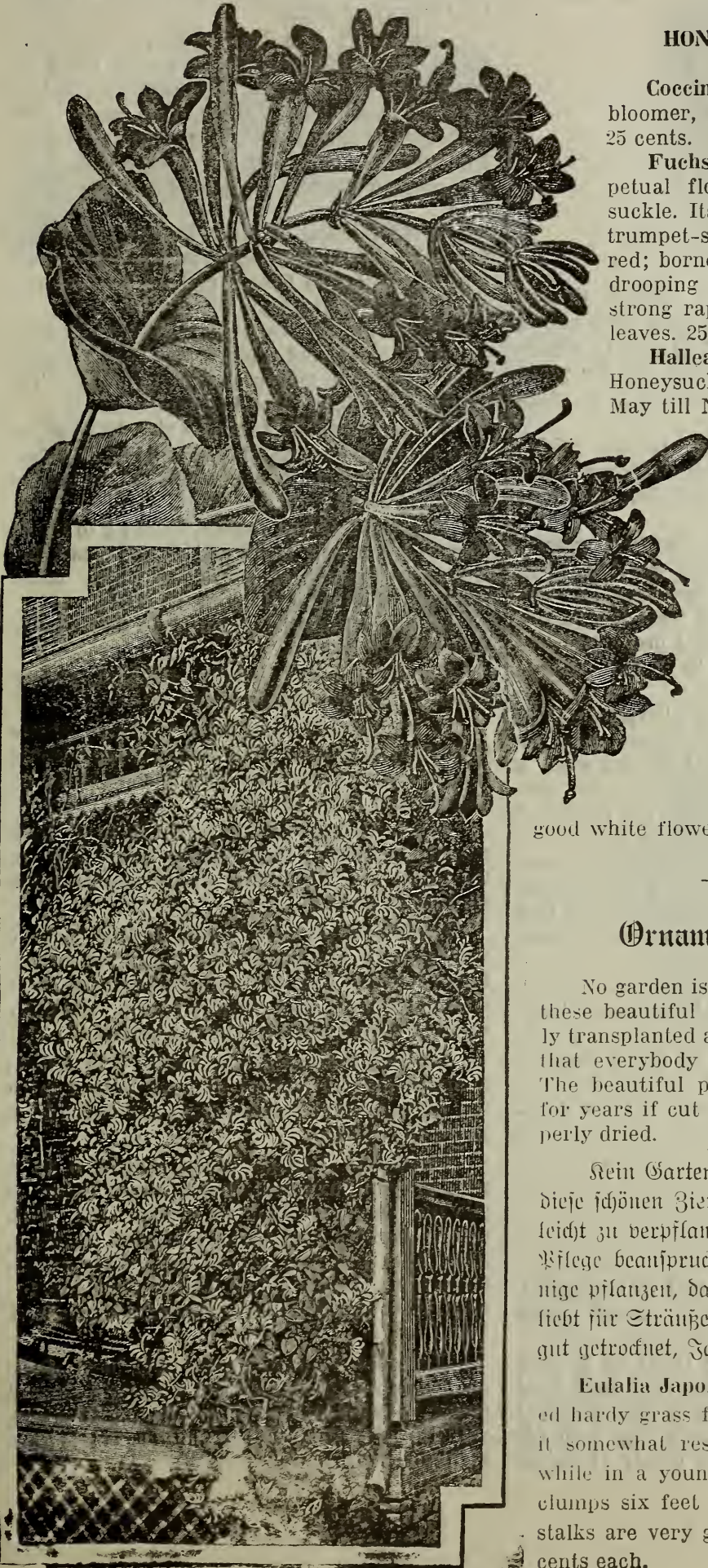
Floribunda Alba. A good white flowering variety. 25 cents.

Ornamental Grasses

No garden is complete without a few of these beautiful grasses. They are so easily transplanted and grow with so little care that everybody can afford to have them. The beautiful plumes they produce keep for years if cut at the right time and properly dried.

Kein Garten ist vollständig, in welchem diese schönen Ziergräser fehlen und da sie so leicht zu verpflanzen sind und fast gar keine Pflege beanspruchen, so sollte ein Jeder einige pflanzen, da ja auch die Blüthen so beliebt für Sträuße und Vasen sind, und, wenn gut getrocknet, Jahre lang halten.

Eulalia Japonica Variegata, a variegated hardy grass from Japan. In appearance it somewhat resembles the Ribbon Grass while in a young state. It forms compact clumps six feet in diameter; its flower stalks are very graceful and numerous. 15 cents each.





Eulalia Japonica Zebrina. (Zebra Grass.)

Bright green blades with yellow bars across them; grows to a height of 5 to 6 feet; produces fine, lace-like plumes which last for years if cut when fresh. Perfectly hardy. 15 cents each.

Eulalia Univittata, plumes silvery white, produced upon very long stems; blooms early; a graceful new variety. 4 to 5 feet. 15 cents each.

Lemon Grass, came from Malabar, where, as in many other parts of the world, the tea made from it is a favorite beverage. A delightful perfume is extracted from the leaves. Highly valued for its medicinal properties and sweet fragrance; height, 2 to 3 feet. Large clumps, 25 cents each.

Umbrella Plant. (Cyperus Alternifolius.) A splendid plant, throwing up stems two or three feet high, surmounted at the top with a whorl of leaves diverging horizontally, giving it a novel appearance. Fine for center of vases or aquariums. Price 25 cents each.

Gynerium Roi des Roses, plumes very compact, of delicate rose color, very fine blooming and compact growing; new variety, 5 to 6 feet, 25 cents each. 2 years, extra large clumps, 50 cents each.

Gynerium Argenteum (Pampas Grass) enormous bunches of long, handsome, dark-green blades, producing long stalks of silver-white plumes. 5 to 6 feet. 25 cents each. 2 years, extra large clumps, 50 cents each.

Dry Pampas Grass Plumes, fine for decoration, 25 cents per 12 Plumes.

Cannas

Dry, divided roots; the best to transplant. 15 cents each; \$1.50 per dozen, except where noted.

This is one of the most thankful flowers. It produces its flowers from spring until frost kills the top of the plant, and in such different and exquisite colors that nobody can help admiring them. The plant needs plenty of water-

ing, and can only be had where there is a plentiful supply of same.

Dieses ist eine der dankbarsten Blumen, da sie vom Frühjahr bis zum Herbst, wenn der Frost ihren Wuchs endet, blüht und zwar in solch frischen, leuchtenden Farben, daß einem ein blühendes Canna-Beet große Freude bereitet. Diese Pflanze gebraucht viel Wasser und kann nur gezogen werden, wo solches zur Verfügung steht.

David Harum. Foliage bronze, height 3 feet, growth sturdy, habit moderately clean, flowers similar to King Humbert, but color is reddish yellow orange.

Musafolia. Leaves a purplish deep bronze and dark green and often 4 feet long. Grows 7 to 8 feet high and grows luxuriantly. The flower is small, red and inconspicuous.

King of Bronzes. Leaves a rich bronze red with rounded ends and large, height 7 to 8 feet, growth luxuriant, flower small, but in trusses of fair size and pretty.

Moonlight. Green foliage, height 2 to 3 feet, growth luxuriant; truss and flower small, but delicately formed, of a creamy white color; the best of all white Cannas. 25 cents.

Lorraine Imperial. Beautiful flesh color, spotted light yellow.

Coronet. Medium height. Golden yellow, shading darker towards inside.

R. Wallace. Flowers borne on long stems. Color white, spotted pink inside; large blooms.

La Patre. Enormous pink flowers borne on long stems; large foliage.

Joliet. Foliage green; height, 5 to 6 feet; growth luxuriant; habit clean; flower one of the finest red, a brilliant orange scarlet, often six inches across.

Louisiana. Foliage green, height 5 to 6 feet, growth luxuriant. The finest red canna. Large flowers, deep crimson, darker than Duke of Marlborough, with crinkly edges and silky sheen. Flowers often six inches across.

Indiana. Foliage green, height 5 to 6 feet; immense golden orange flowers veined with red, often several inches across and borne high above the foliage.

Flambeau. Foliage green, height 6 to 7 feet, growth luxuriant, habit clean. Color a glowing fiery vermilion or orange red with golden borders and throat; in size immense, often 6 to 7 inches across with wavy edges; flowers stalks rise a foot higher than the foliage. It is ideal for the center of a Canna bed. New.

Mercedes. Foliage green, height 3 feet; growth sturdy, habit clean. A quietly elegant flower. A pure lemon yellow shading to white, with throat spotted with vermilion. Petals have a silky sheen.

Flowering Plants



King Humbert. Foliage bronze; height 3 feet. The finest bronze leaved canna. A gorgeous thing. An orange scarlet flower streaked with crimson and gold. True orchid type.

Shenandoah. Another beautiful dark foliage variety; flowers pink; very free.

Alemania. The giant of all cannas. Produces the largest flowers. The outer petals are scarlet, with a very broad, golden yellow border; inside of bloom is scarlet and dark red.

Austria (new), the gorgeous new orchid-flowered Canna, a hybrid with "Canna Flaccida" as one parent; flowers of immense size, 5 to 6 inches across. Color golden yellow.

America. The first red-leaved Canna in the giant-flowered class. Height, 4 to 5 feet; foliage fine glossy bronze, almost as if varnished; flowers extra large, deep orange, flamed and striped with a deeper shade.

Banana (Musa)

Orinoco. The hardiest and commonest sort. Plant of large size with dark green leaves. Very robust and easily grown. Strong suckers 50 cents and \$1.00 each.

German Iris (Flags). Color ivory white and yellow, very hardy. 15 cents each. \$1.50 per dozen, \$10.00 per 100.

Gladiolus. Blooms only once and although its beauty lasts only a short time, it is beloved by everybody who knows it. The flowers are borne on spikes 2 to 3 feet long, and bloom in succession for 8 to 14 days, the lower flowers blooming first. To have a continuance in bloom the bulbs ought to be planted at intervals of every two weeks from March first until the end of May. My bulbs are extra large, well matured and taken only from the best varieties. Bulbs extra large 1½ inches in diameter, of the finest varieties that money can buy, 35 cents per dozen; \$2.00 per 100.

Die Gladiolus blüht nur einmal, doch ist die Blüthe eine wahre Pracht, da jeder Stengel eine andere Farbe oder Schattirung hervorbringt. Um lange Zeit von diesen prächtigen Blumen zu haben, sollte man Knollen im März, April und Mai pflanzen. Meine Knollen sind groß und gesund, und die feinste Mischung, die zu haben ist.



Try a hundred of my extra large and extra fine bulbs, and have the grandest flowers you ever saw of all colors. Yellow, crimson, buff, salmon, lemon, pink, rose, white, maroon, cherry, scarlet and in fact, all oddly marked sorts that one can think of.

We can furnish the following named varieties, large bulbs true to name.

America. A fine pink variety, much used by Florists, opens well. Price 5 cents each, 50 cents per dozen.

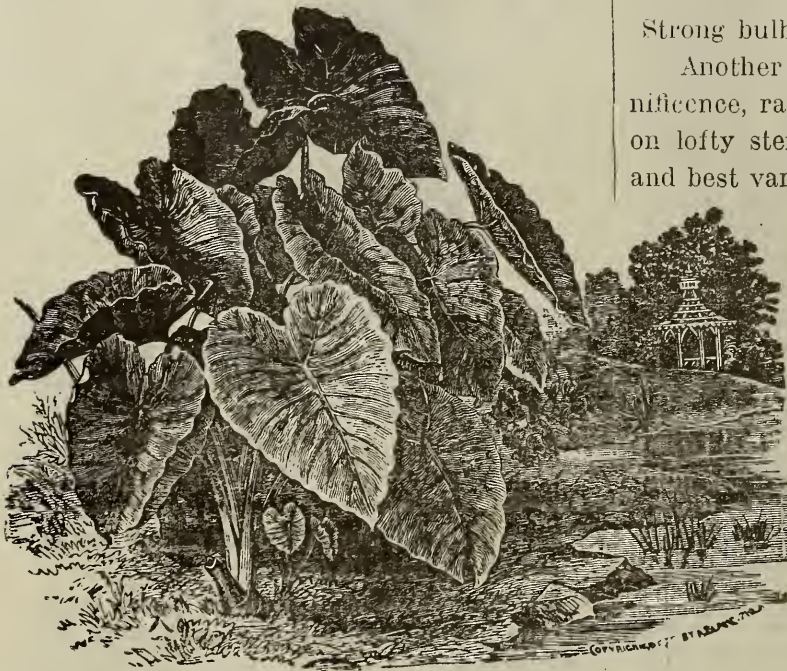
Velvet King. The best Scarlet Gladiolus. 5 cents each, 50 cents per dozen.

Francis King. Beautiful vermilion-scarlet, very useful for cutting. 5 cents each, 50 cents per dozen.

Chicago White. The pure White Gladiolus, rare. 6 cents each, 60 cents per dozen.



Tritoma, Everblooming, the greatest plant ever introduced, surpassing the finest cannas for attractiveness and brilliancy, equal to the Gladiolus as a cut flower, and blooms incessantly from June until December. Plants are hardy in open ground. Strong roots, 15 cents each; \$1.50 per 12.



Caladium Eseulentum. (Elephant's Ear.) One of the most effective plants in cultivation for the flower border or for planting out upon the lawn. It will grow in any good garden soil, and is of the easiest culture, but to obtain the best results it should be planted in rich com-

post and plentifully supplied with water. Price, large bulbs, 25 cents each, \$2.00 per dozen.

Mexican Tuberoses. Unlike any other variety, it has stiff, tall stems; flowers pure white, single, delightfully fragrant; bloom continuously from June till killed by frost. Large bulbs 5 cents each. 50 cents per 12.

Shasta Daisies. Burbank's great production. Largest flowers and most constant bloomers of all daisies. Wonderfully hardy, especially in summer. Strong plants 5 cents each, 25 cents per dozen.

Malvaviscus Drummondii. A native of Texas, producing during summer a profusion of nice scarlet flowers and edible fruit. 15 cents each; \$1.00 per dozen.

CARNATIONS

The carnation excels all other flowers, the rose alone excepted. If planted in the open ground it will bloom all summer, and if taken out and brought indoors at the approach of cold weather, it will bloom in winter.

Mixed Color (Seedlings) grown from the very best Italian seed. 25 cents per dozen.

Carnations, in named varieties, crimson, red, white, pink and variegated, of the most popular varieties. 10 cents each; \$1.00 per dozen. Plants not ready before February 15.

DAHLIAS

Strong bulbs, 15 cents each; \$1.50 per dozen.

Another beautiful perennial of great magnificence, raising its brilliantly colored flowers on lofty stems. We have only the very latest and best varieties.

For many years we have tried to get the Dahlia true to name, and have never succeeded to get them so until this year. We purchased the highest priced varieties from the Dahlia King of Bridgewater, Mass., of the Dahlias that were awarded the first prize at the World's Fair at St. Louis, and we are now able to furnish bulbs of highest quality and true to name. We have secured them directly from the Dahlia King regardless of price, and are sure our customers would rather pay a little more and get the very best than any others.

The Dahlia thrives best in a sunny location with ordinary soil.

DECORATIVE DAHLIAS

Clifford W. Bruton. Bright yellow, large and free.

Cora Gleason. Deep purple, fine form.

Gettysburg. Very large and bold. Deep scarlet, one of the best for cut flowers.

Minos. Velvet maroon, extra fine, very free, best dark decorative.



Mrs. Hartong. Deep orange, tipped pink and sometimes white, large.

Papa Treyve. Deep orange red, tinted scarlet, large, good form.

Souvenir de Gustav Douzon. Orange red, extra large flowers, one of the best.

Wilhelm Miller. Brilliant purple, very large and free.

CACTUS DAHLIAS

Clara G. Stedwick. Clear bright salmon, large and very free.

Dr. Jameson. Deep crimson, very free.

Gen. Buller. Rich velvety crimson, tipped white, very good.

Iceberg. Ivory white, fine form.

J. Weir Fife. Very dark maroon, very free, fine.

J. H. Jackson. This is the best dark Dahlia yet out, almost black.

Kriemhilde. Pleasing shade of pink, white center; extra.

Mrs. F. Grinstead. Deep rich crimson, faintly veined purple, fine.

Prince of the Yellows. Soft yellow, extra fine, best yellow.

SHOW AND FANCY DAHLIAS

Dr. J. P. Kirkland or Cuban Giant. Dark crimson, large and free.

Fascination. Rose pink, large, one of the best.

Perfection. Orange buff shade, perfect in every way.

Robert Broomfield. Pure white, large flower, free.

Storm King. Pure snow-white, one of the best, very free.

Stradella. This is one of our seedlings and can be highly recommended. The color is rich deep purple crimson. 25 cents each.

White Queen. Pure white, often tinted lilac.

POMPON DAHLIAS

Ariel. Deep orange buff, free.

Darkness. Very dark maroon, extra fine, free.

Fairy Queen. Sulphur, edged pink, very fine.

Snow Clad. White, small, free and fine.

Star of the East. Clear white, distinct.

VIOLETS

Prince of Wales. (New single violet). This violet is far ahead of any violet known; it is wonderfully free-flowering, with stems from 10 to 12 inches long; large, green leaves of a thick leathery texture. The grand single flowers, of a true violet color that does not fade, are of round symmetrical form, almost as large as pansies, and of the richest and most delicate fragrance. 5 cents each, 50 cents per dozen.

Swanley White. Of all the white violets this is the best, either for pot culture in the

house or bedded out. In pots it grows luxuriantly and is loaded with flowers. It is not an uncommon sight to see as many as fifty large flowers open at once, presenting a beautiful sight, their delicious perfume filling a whole room. 10 cents each; \$1 per dozen.



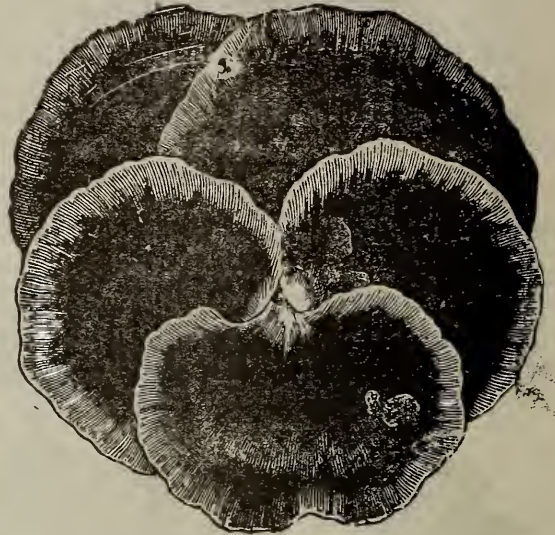
HOLLYHOCKS

Best varieties in all colors, strong plants. 10 cents each, \$1.00 per dozen.

VERBENAS

Large-flowering Verbena plants in all colors. Of the very best seeds, strong plants at 10 cents each, \$1.00 per dozen.

Yellow Day Lily. (*Hemerocallis Formosissima*.) One of the hardiest of all lilies. Single. Once planted you have it always. Rich gold color striped inside. Price 10 cents each. \$1.00 a dozen.



PANSIES

Giant-Flowering Pansies (*Viola Tricolor Maxima*). I have imported the finest mixed pansy seed that I could get in Europe, and have very strong plants to offer at 15 cents per dozen; \$1.25 per 100 plants.

We have a large stock of Pansies and Carnations.



CHRYSANTHEMUMS

We have selected the best varieties for the South in all shades of white, pink, yellow and red and can furnish well rooted stock from pots at 10 cents each, \$1 per dozen. No plants ready before February 15th.



Water Hyacinth. Easily grown; floats on the water by means of curious inflated leaves, a mass of feathery, blue roots growing downward in the water. The flowers, as large as a silver dollar, are borne on spikes 6 to 8 inches long, resembling Hyacinths, and are as handsome as an Orchid; of a beautiful, sparkling rosy lilac color. Price 10 cents each, \$1.00 per dozen.

Salvia Splendens. Large scarlet; exceedingly showy and useful for cutting and for ornamental beds. Price 10 cents each, \$1.00 per dozen. Plants are not ready till February.

DUTCH BULBS

We have added a few of the best varieties to our catalog this season, and can furnish strong bulbs in October, November and December.

Double Dutch Hyacinths. In red, pink, yellow, blue and white. 10 cents each, 3 for 25 cents; per dozen 90 cents.

Single Hyacinths in separate colors for bedding or pot growing: Red, Pink, Blue, White, Yellow. 8 cents each, 75 cents per dozen.

Single Tulips, pink, crimson, yellow, white. 4 cents each, 35 cents per dozen, \$2.50 per 100.

Jonquils. They are very popular and are much esteemed for their charming, fragrant golden-yellow blooms. 25 cents per dozen, \$1.25 per 100.

Narcissus. Paper-White Grandiflora. An improved white flowering, very fragrant, most

easily grown; splendid for pots; can be had in bloom by Christmas. Price 5 cents each, 50 cents per dozen, \$3.50 per 100.

Narcissus, Van Sion. Large golden-yellow of fine form. Elegant for forcing and unexcelled for bedding. Our bulbs are the best obtainable. 4 cents each, 50 cents per dozen, \$3.50 per 100.

Lilium Harrisii. Bermuda Easter Lilies. Flowers trumpet shaped, pure waxy white and exquisitely fragrant. The bulbs should be potted in the fall, using very rich soil, and kept in a cool dark place to get a strong root growth before the tops start. Height, 3 feet. Bulbs will bear six to ten flowers. Price 15 cents each, \$1.50 per dozen.

Flower Seeds

All the flower seeds that I offer are guaranteed to be fresh and of the very highest quality. All seed are now grown by us.

Gaillardia picta Lorenziana. (Blanket Flower.) Very showy free-flowering plants that are quite hardy and are very easily raised from seed. Sow seed quite early in the spring in shallow drills, and thin out. We have a fine lot of Gaillardia Picta Lorenziana seed of the double variety of the finest mixed colors. Price 5 cents per package.



Coxcomb, best mixed, 10 cents per package.

Hollyhocks. Large double mixed, extra fine per package 10 cents.

Ipomoea (Japan Morning Glory), mixed. 10 cents per package.

Pansy, the best mixture of giant-flowering kinds, all colors. Large package, 15 cents each.

Margaret Carnations, dwarf mixed, brilliant colors. 10 cents per package.



Field of our Giant Zinnias, where we grow our seeds.

Zinnias, Giant Flowering. Flowers 4 to 5 inches across, vigorous grower; mixed, per package 10 cents.

Zinnia, Colossal White. Owing to the increasing demand of white flowers, we have added to our list the pure white double Zinnia, so much admired in summer, when other cut flowers are scarce. Price 10 cents per package.

Centaurea Cyanus. (Cornflower.) Mixed. Beautiful flowers in bloom all summer; pretty shades of white, blue and deep rose. Hardy annual. Price 5 cents per package.

Delphinium (Larkspur), best mixed, 10 cents per package.

Amaranthus. (Bachelor Button.) Very hardy, flowers excellent for cut flowers, as they keep well. Mixed colors, white, pink and red. Price per package 5 cents.

Antirrhinum (Snapdragon) majus grandiflora, per package 5 cents.

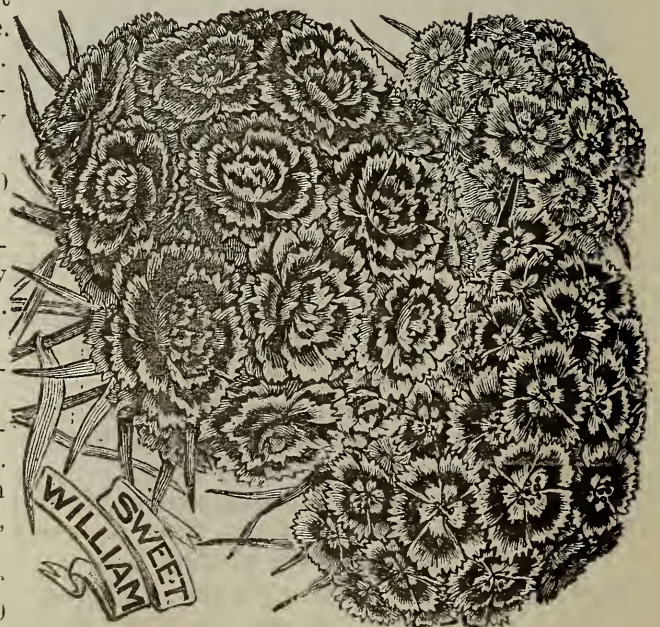
Scabiosa. (Mourning Bride.) Sweet Scabious. Very desirable for summer cut flowers. Useful in making up. Very hardy and can stand our long hot summer well. Per package, all colors mixed, 10 cents.

Sweet Peas. Grandiflora and Spencer Sweet Peas of the very best varieties. Price 10 cents per package.

Dianthus Chinensis (Chinese Pinks). Very best mixed, 5 cents per package.

Dianthus Plumaris (Eye-Pinks), package 5 cents.

Dahlia Variabilis, double mixed, 10 cents per package.



Dianthus caryophyllus barbatus (Sweet William), package 5 cents.



Balsams, improved rose, extra-double. 10 cents per package. (Home-grown.)

Winter Stocks, mixture of all colors. 10 cents per package.

Poppy, mixed, best single and double. 5 cents per package.

Phlox Drummondii, best mixed. 10 cents per package.

Cypress Vine, a most beautiful climber with delicate dark green feathery foliage and an abundance of bright, star-shaped, scarlet and white blossoms. 5 cents per package (Home-grown.)

Verbenas, giant-flowered, 10 cents per package.

Vinca Rosea, red and white mixed. 10 cts. each.

Vegetable Seeds

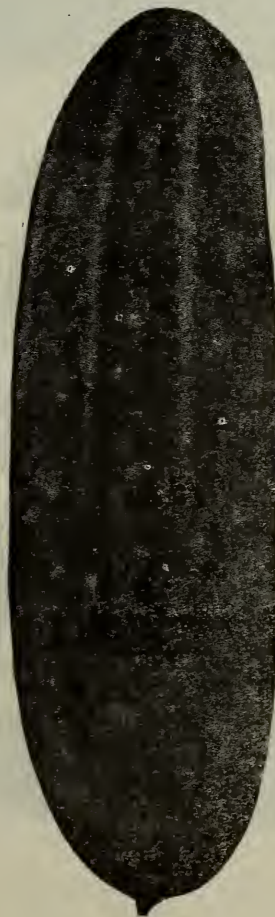
Tomatoes. For many years I have devoted a great deal of my time in testing the old and new varieties of tomatoes, as they are introduced; and among them all I have found only two varieties, that I can highly recommend as the best for the Southland. All those who have planted seeds from the President Roosevelt and our new Triumph Pink Tomato know that they are the best ever offered in the South. We are the largest tomato seed growers in the South and take seeds only from choice full-ripe tomatoes.

Locke's New Triumph Pink Tomato. This tomato is an improved McGee tomato, having been selected and grown from the best pink tomato which was selected from a lot of Prof. N. C. McGee's variety which bears his name; as Prof. McGee's tomatoes were of different shades of pink and red, we have so improved this tomato that the plants grown from our seed will all produce pink tomatoes of large size. The tomato is round and smooth and immensely productive, of large size; we had some weighing a pound each; this variety is unexcelled for black land. Uniform package containing about 1000 seeds, 15 cents each; \$1.50 per ounce; per pound \$20.00.

Tomato, President Roosevelt. The earliest, best and most productive of all the round, smooth, large tomatoes existing. Upon several years' trial we found the new tomato "President Roosevelt" the earliest, best smooth new tomato up to now existing. It is immensely productive, nearly all meat, having very little seed; firm and of very mild flavor. The growth of the plant is very vigorous, 5 to 6 feet high; the foliage is large. The bright scarlet, solid fruits weigh on an average one pound each; in clusters of 4 to 8. Packages 10 cents each; per ounce \$1.00; per pound \$15.00.

Tomato, California. A new round, firm tomato from California, does not split or rot. It is the ideal market variety; it is firmer than any other variety and a fine shipper. The tomato for the market gardener. Price per package 25 cents.

Cucumber, Locke's New Ideal. The best cucumber ever grown in Texas. Improved by us and acclimated to our conditions. Very vigorous and healthy, and grows throughout the summer. We raised the finest green cucumbers in the middle of July and August. Flesh white and crisp, of excellent flavor. Early and immensely productive. Color is dark green with pale green stripes. Without doubt the best cucumber for the market gardener. Splendid for fall planting. Package 10 cents, 1 ounce 20 cents, ¼ pound 50 cents; per pound \$1.50.



Imperial White Spine. Best market cucumber, 10 cents per ounce, \$1.00 per pound.

Watermelon Seeds

Alabama Sweet. The best watermelon for sandy soil. All our melon seed is taken from selected melons. 10 cents per ounce. 60 cents per pound.

Tom Watson. Best Watermelon introduced to date. Perfect in shape. No strings; delicious in taste. Splendid shipper. Package 10 cents, 1 pound 75 cents.

Rockyford Cantaloupe. The best cantaloupe for the Southwest, too well known to need any further description, home grown seed. Price per ounce 10 cents, per pound 60 cents.

Seed Corn

Mexican June Corn. This corn will bring a good crop if planted at any time from April to middle of July. It stands our hot dry summer well. The seed we offer is grown here, especially for seed, and every stalk of poor quality is cut out before it pollinates the other corn. This corn is adapted to our conditions, as we have grown it for several years. Price \$3.50 per bushel.

Soudan Grass. This comes to us from Northern Africa, where it has proven entirely satisfactory for mesa lands. It will grow 5 feet in height eight weeks from seed. Cuts tree tons per acre twice a season and then produces pasture until frost. In appearance it is similar to Johnson grass, but does not spread from the roots and is no pest. By Express, 35 cents per pound. We have 2000 pounds extra fine seed.

Greenhouse Department



Palms, Ferns etc.

Owing to the growing popularity of palms, we have this season added a complete assortment of them to our nursery trade.

Cycas revoluta. (Sago Palm.) They are probably the most valuable decorative plants grown, both for lawn and house decoration. Their heavy, glossy, deep green fronds resist alike the gas, dust and cold to which decorative plants are frequently exposed. We have an exceptional fine lot in popular sizes. Price, 10 to 12 inch pots, extra large plants, from \$2.50 to \$3.00 each.

Latania Borbonica. The well-known Chinese Fan Palm. This is more largely grown as a house palm than any other variety. 5 inch pot, 50 cents each; 7 inch pot, 75 cents each.



Sabal Palmetto, 8 years old..

Washingtonia (Prichardia Filifera). The hardiest of the Washingtonia type; quick grower, similar to Washingtonia Filifera in leaf, but more erect. Large plants, weight 50 to 100 pounds, 2 feet, \$2.50 each; 3 feet \$3.50; 4 feet \$5.00 each; 2 years, 15 to 18 inches, 50 cts. each.



Phoenix Reclinata. This is a magnificent

species, especially adapted for growth in pots. The drooping leaves are green in color, and the plant is of easy growth. 6-inch pots \$1.00 each.

Sabal Palmetto. The famed "cabbage" Palmetto. This forms a tall tree with a large head of fan leaves. This tree can be grown all over the South and is very hardy here; \$1.50 each, 3 years, 3 feet, \$2.50 each; 4 years, 5 feet, \$3.50 each.

FERNS

Adiantum (Maiden Hair): Cuneatum, the most generally known, quadrupinnate foliage. Very fine for any purpose. 25 cents each.

New Tarrytown. This is a sport from the Pierson fern, in which the plumy peculiarity of the original form is even more distinctly developed. Fronds twice as wide as those of its parents. Price 25 cents each.

Nephrolepis Cordata Compacta (Sword Fern.) Stocky and dwarf; very fine; dark green leaves. 25 cents each.

Nephrolepis Piersoni. The great new plant so much talked about lately; splendid

fronds giving a magnificent appearance. As hardy as Boston fern. 25 cents each.

Nephrolepis Whitmani. In this we have unquestionably the most valuable fern of the Ostrich Plume type yet introduced. Price 25 cents each.

Nephrolepis Wittboldi. A stocky plant said to be a sport of the Boston fern. Is equally as hardy as the Boston and has broad, waxy fronds: 25 cents each.

Nephrolepis Scottii. A new semi-dwarf compact form of the Boston Fern. It makes a very symmetrical, dense plant. Price 25 cents each.

Prices on native hardy ferns for outdoor beds furnished on application.



Araucaria Excelsa. (Norfolk Island Pine.) This beautiful plant is well adapted to house culture and is almost indispensable as a decorative plant. The dark green branches are arranged in symmetrical whorls, producing a very unique and graceful appearance. 6 to 8 inches, 75 cents each; 10 to 12 inches, \$1.00 each; 18 to 24 inches, \$2.00 each.

Asparagus Sprengeri. A desirable species, useful as a pot plant or for baskets; fronds frequently 4 feet long; a rich shade of green, retaining freshness for weeks after cutting.

Asparagus Plumosus. A very fine, fern-leaved climbing plant, particularly nice for bouquet work. It is a splendid pot plant and may be kept in a bushy shape for a long time. Nice young plants 25 cents each.



Ficus Elastica (Rubber Tree.) A valuable rubber producing tree with magnificent broad leaves and red leaf sheaths. Is well known as a decorative plant for apartments and is of easy growth. Price 50 cents each.

Xmas Trees. We have a fine lot of well-shaped Chinese Arborvitaes that we offer to our customers for Christmas Trees. They are nursery-grown, well shaped and much better than our common cedar trees.

Send your orders early, as we have only a limited supply.

5 foot trees, @ 50 cents.

6 foot trees @ 75 cents.

7 to 8 foot trees @ \$1.00.

We also have cedar trees at same prices.

Insecticides. Hammond's Slug Shot. Used from ocean to ocean. A light, composite, fine powder, easily distributed either by duster bellows or in water by spraying. Thoroughly reliable in killing currant worms, potato bugs, cabbage worms, chicken-lice, slugs, sow bugs, etc., and it is also strongly impregnated with fungicides. 1 lb. can 25 cents, 5 lb. \$1.00 each.

PROPER DISTANCE OF PLANTING

Peaches, Apricots, Nectarines

12 to 16 feet each way

Plums, Cherries.....10 to 15 feet each way

Pears18 to 20 feet each way

Persimmons10 to 12 feet each way

Apples16 to 20 feet each way

Grapes 6 to 8 feet each way

Dewberries, Blackberries, rows 3 to 6

feet apart, 2 feet in row.

NUMBER OF TREES OR PLANTS TO THE ACRE

Distance Apart	No. of Trees
3x3 feet.....	4,840
6x6 feet.....	1,210
8x8 feet.....	680
10x10 feet.....	435
12x12 feet.....	302
15x15 feet.....	193
16x16 feet.....	170
18x18 feet.....	134
20x20 feet.....	108
25x25 feet.....	69

FOR THOSE WHO IRRIGATE

Those who irrigate should plant fruit trees extensively. Not alone the fruit crop can be saved by irrigating the trees at the right time, but the fruit will also develop better, and is therefore more saleable and brings the best price.

As we are aware, most failures in fruit growing are due to long droughts in early spring and summer, and by supplying the trees with the necessary water at the right time the best results are obtained. Irrigators can successfully plant 2 to 3-year-old trees and thus save several years' growing. If fruit is grown for market it is advisable not to plant too many varieties, but as many of the most productive ones as possible.

OFFICIAL NURSERY INSPECTION CERTIFICATE.

Copy of Certificate No. 220.

STATE OF TEXAS,

Department of Agriculture.

THIS IS TO CERTIFY THAT THE Nursery Stock grown, exhibited or held for sale by Comal Springs Nursery Co. at New Braunfels, County of Comal, State of Texas, has been inspected by a duly authorized Inspector of this Department in accordance with the provisions of the Orchard and Nursery Inspection Laws of the State of Texas, and was found to be apparently free from Dangerously Injurious Insect Pests and Plant Diseases.

A printed copy of this certificate on any shipping tag attached to any shipment of Nursery Stock is authority to any freight or express agent in Texas to accept same for transportation. This Certificate is void after September 1, 1918.

Austin, Texas, September 11, 1917.

Approved: **FRED W. DAVIS,**
Commissioner of Agriculture.

ED. L. AYERS,
Chief Inspector of Orchards
'and Nurseries.

To those who are not acquainted with us and who have not sent us orders, these few words are intended.

Were it possible for you to pay us a visit and personally inspect our nurseries and methods of doing business, you would show no hesitancy in sending us your orders; in fact, you would advise your friends also to purchase their nursery stock from us.

Send us a trial order, no matter how small, and you will be astonished at the prompt service and excellent value you receive.

Had we sufficient space here, we would print a few of the many letters which we receive daily from our customers, expressing their hearty approval of the manner in which their orders were filled and their entire satisfaction, after the trees have fruited, and were found true to label. It has been a custom for several years with us to print a few of the best voluntary testimonials from our friends, but having less space this year, we ask everyone who wishes to buy from us, and is not yet acquainted with us, to ask for some testimonials from some one in his locality and as we have hundreds of them on file from all over the States and Mexico, we will send some to you from parties who have bought from us and whom you know.

We need do little advertising—our customers do that for us; it is not uncommon for people who sent us a few orders, to solicit orders from their neighbors and friends and have club orders shipped out together to save on express charges.

When people interest themselves to such an extent, it certainly demonstrates the fact that our trees and plants have pleased them (and will also please you) and that our nursery is the place where you should buy your nursery stock. If we please you, tell your friends; this is worth more to us than all the promises made by the traveling tree agent put together.

Yours,

COMAL SPRINGS NURSERY.





An meine werten Kunden.

Obgleich wir es ungerne tun, sehen wir uns aber gezwungen, dieses Jahr den Preis an Baumschulartikeln zu erhöhen. Es ist unmöglich, Bäume und Sträucher zu den alten Preisen zu ziehen, da der Arbeitslohn doppelt so hoch ist als vor einigen Jahren; Material zum Verpacken und Verschicken der Bäume ist 3 bis 4 mal höher im Preise. Aller Samen, Sämlinge, junge Pflanzen und so weiter sind sehr im Preise gestiegen; so müssen auch wir unsern Preis erhöhen.

Wir werden auch in Zukunft nur das Allerbeste, zu den niedrigsten Preisen liefern.

Hoffend, daß auch dieser unser zweiunddreißigster Katalog alle meine Kunden im besten Wohlergehen antreffen wird,

mit Hochachtung,

Otto Locke.

EXPRESS RATES

For the convenience of our customers, we have obtained the correct express rates on trees (100 pounds) to some of the stations to which we are making our principal shipments. The rates given below are on 100 pounds, and it is easy to determine how much your bundle should cost you, and if you think that the rate the agent charges you is incorrect, be sure and have him figure it out. Tell him to take Merchandise Rates, and, if the shipment was forwarded only by one company, the correct rate on trees is 20 per cent less than merchandise. If the trees went over two different companies, each company figures at 20 per cent less than Merchandise Rates and allows an additional 10 per cent on what is left; thus, if two companies forwarded your bundle, and the Merchandise Rate from here to your station is \$1, the correct rate on trees is 72 cents.

Artesia.....\$ 80	Dale.....\$ 40	Kingsland..\$ 70	Rosanky...\$ 45
Alpine..... 1 60	D'Hanis... 60	Lockhart... 35	Rosenberg.. 1 00
Abilene..... 1 40	Dunlay.... 50	LaGrange.. 60	Round Rock 50
Austin..... 40	Devine..... 45	Lacoste.... 45	Rockdale... 70
Alice..... 85	Dilley..... 70	Luling..... 60	Runge..... 70
Alvin..... 1 00	Dallas..... 1 15	Lampasas.. 80	San Marcos. 30
Brookshire. 85	Driscoll.... 1 08	Lozier 1 35	Smithville.. 50
Bastrop.... 55	Elmendorf.. 40	Leon..... 35	Sealy..... 80
Bartlett.... 80	Eastland... 1 40	Lytle 45	Seguin..... 50
Beeville.... 70	Eagle Pass. 85	Laredo..... 85	Sweetwater. 1 40
Boerne..... 45	Eagle Lake. 85	Lexington.. 70	San Angelo. 1 40
Big Springs. 1 40	El Paso.... 2 05	Lott..... 85	Schulenburg 80
Burton..... 80	Engle..... 80	Langtry... 1 15	Sweet Home 85
Brenham... 85	Encinal.... 85	Ledbetter.. 70	Sublime.... 85
Bellville... 85	El Campo.. 85	Llano..... 85	Shiner..... 80
Ballinger... 1 15	Edna..... 85	Lancaster.. 1 15	Sabinal.... 70
Buda..... 35	Elgin..... 55	Maxwell... 35	Spofford... 85
Belton..... 85	Fayetteville 70	Marfa..... 1 60	San Antonio 35
Burnett.... 70	Flatonia... 70	Marion.... 45	Sanderson.. 1 40
Coupland .. 70	Floresville. 45	Midland... 1 60	San Diego... 85
Cat Springs. 70	Fort Worth 1 00	Marble Falls 70	Sweden.... 1 26
Comfort.... 55	Franklin... 85	McDade.... 60	Skidmore... 80
Converse... 40	Goldthwaite 85	Millett.... 70	Stockdale... 50
Colorado... 1 40	Giddings... 70	Mullen.... 85	Sierra
Coleman... 1 00	Gonzales... 70	Moulton... 80	Blanca. 1 88
Copperas	Georgetown 55	Muldoon... 80	Temple.... 85
Cove... 85	Goliad..... 85	Moore..... 55	Terrell..... 1 15
Comanche.. 1 15	Haymond.. 1 58	Mineola... 1 40	Taber..... 1 40
Columbus.. 85	Hondo City 55	Milano	Thorndale.. 60
Cuero..... 70	Hallettsville 85	Junction 70	Uvalde..... 70
Cline..... 85	Harwood... 60	Meridian... 1 00	Viva..... 59
Comstock.. 1 00	Hempstead. 85	Merkel.... 1 40	Von Ormy.. 40
Cotulla 70	Hockley... 85	Marlin..... 85	West Point. 55
Carmine ... 70	Hillsboro.. 1 00	New Ulm.. 70	Waco..... 85
Corpus	Houston... 85	O'Quinn... 60	Welfare.... 68
Christi. 85	Hearne.... 80	Pecos..... 1 85	Weimar.... 85
Cisco..... 1 40	Karnes City 60	Palestine... 1 00	Waller..... 85
Calvert 85	Kenedy.... 60	Pearsall... 60	Whitesboro. 1 40
Cleburne... 1 15	Kerrville... 70	Reedville... 35	Yorktown... 70
Cactus..... 85	Kingsbury.. 55	Red Rock.. 40	Yoakum... 80
Del Rio.... 1 00	Kyle..... 35		