

## **Historic, archived document**

Do not assume content reflects current scientific knowledge, policies, or practices.





# ARCHIAS' Seed Annual

SEASON 1934



## GOLDEN ANNIVERSARY

50 Years of "Sure Seed" Service

It is our pleasure to hand you our 50th catalog. It is indeed a Jubilee year with us, for it marks the half century milestone of friendly and successful business. As an expression of our appreciation of your loyal support, we are offering many unusual Jubilee Bargains throughout this catalog.

ARCHIAS' SEED STORE CORP.  
Sedalia, Missouri

### Golden Jubilee BARGAIN

In celebration of our 50 years of Seed Progress, we offer to you as a Jubilee remembrance, this splendid collection below cost.

- Golden Gleam Nasturtium ..... 1 pkt. 15c
  - Gulnea Gold Marigold. 1 pkt. 15c
  - African Orange Daisy (Dimorphotheca) ..... 1 pkt. 10c
  - Archias' Gold Medal Zinnia ..... 1 pkt. 10c
  - New Giant Imperial Larkspur ..... 1 pkt. 10c
- Postage Free For Only **25c** Value, 60c

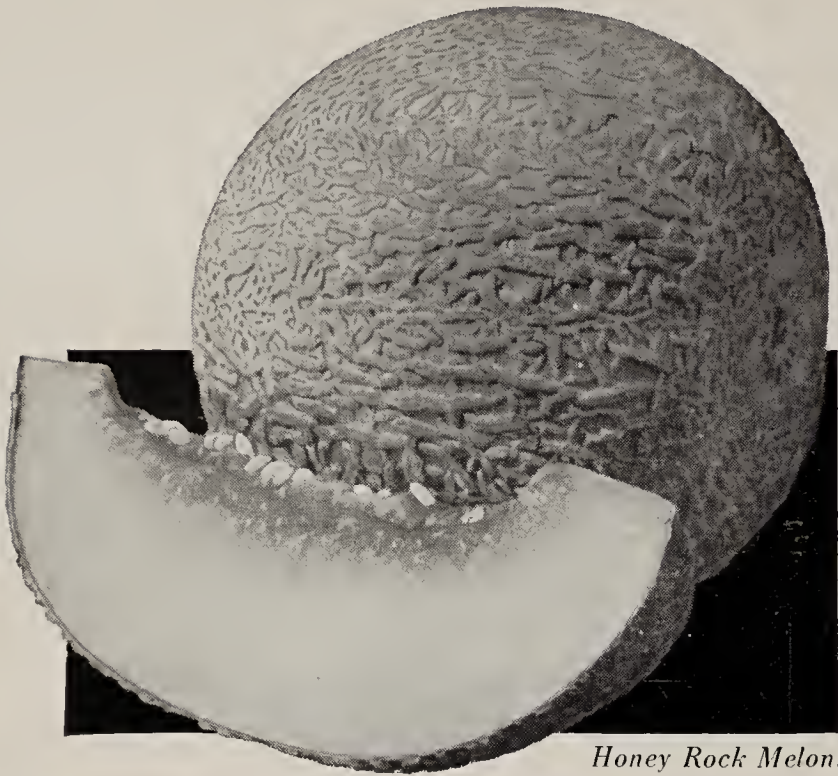




# RECENT INTRODUCTIONS

## of Especial Merit

Listed and Pictured Below are Some of the Newer Varieties Which We Know to be of Special Worth. They Have Been Tested and We Recommend Them.



Honey Rock Melon.



Break o' Day Tomatoes.



Golden Gleam Nasturtiums.

### Vegetables Worth Trying

- BUSH BEAN, Tendergreen Stringless.  
Large pkt., 15c; ½ lb., 25c; 1 lb., 45c; 2 lbs., 75c, postpaid.
- POLE BEAN, Yopp's Pole Lima.  
Large pkt., 10c; ½ lb., 20c; 1 lb., 35c; 2 lbs., 60c, postpaid.
- POLE BEAN, Kentucky Wonder Wax.  
Large pkt., 10c; ½ lb., 20c; 1 lb., 35c, postpaid.
- CANTALOUPE, Honey Rock or Sugar Rock.  
Pkt., 10c; oz., 20c; ¼ lb., 45c, postpaid.
- TOMATO (New Wilt Resistant), Break o' Day.  
Pkt., 10c; ½ oz., 25c; oz., 45c; ¼ lb., \$1.50, postpaid.
- LETTUCE, Archias' New Iceberg.  
Pkt., 10c; oz., 20c; ¼ lb., 50c, postpaid.
- RADISH, Crimson Giant Globe.  
Large pkt., 10c; oz., 15c; ¼ lb., 25c, postpaid.

**Special Offer** One pkt. each of the above Novelties, \$1.05 value, for ONLY **75c**

### SOME UNUSUAL FLOWERS

- MARIGOLD, Guinea Gold (African).  
Large pkt., 15c; 2 for 25c; ½ oz., 40c.
- VERBENA, Archias' Royal Giant Hybrids.  
Mixed. Pkt., 15c; 2 for 25c; ½ oz., 45c.
- NASTURTIUMS, Bodger's Double Golden Gleam.  
Pkt., 15c; 2 for 25c.
- ASTER, Wilt Resistant—American Branching.  
Pkt., 15c; 2 for 25c; 5 for \$1.00.
- ASTER, Sunshine. Splendid mixture.  
Pkt., 15c; ½ oz., 35c; ¼ oz., 50c.
- SCABIOSA, Isaac House Hybrids.  
Pkt., 25c; ½ oz., 65c; ¼ oz., \$1.25, postpaid.

### Special Offer

One pkt. each of above novelties  
Regular \$1.25 Value  
For Only **75c**



Sunshine Aster.



Guinea Gold Marigold.



# 1884 Archias' Golden Anniversary 1934



## SPRING "SURE SEED" SPECIAL

106-108 E. Main St.

Phone 1330

SEDALIA, MO. FEBRUARY 20, 1934

We quote today's prices subject to market changes. These prices include bags or boxes, Free. We sell pecks at bushel rates by adding 10 cents extra for bag to each peck ordered. Prices on this list are **NET CASH**—no discount allowed. If by mail, add postage at zone rate. **TERMS:** Cash with Order. It is easy to order from Archias.

### MEMBERS

American Seed Trade Association  
Missouri Seedmen's Association

## KOREAN LESPEDEZA

(LESPEDEZA STIPULACEA)

Adapted to Any Soil in This Region, Wet or Dry, Rich or Poor, Sour or Sweet. Re-seeds itself annually. Better adapted to a wider area than any other Lespedeza known. Does well where other clovers may fail. Furnishes excellent pasture crop from July until well into September when most pasture crops are often at their poorest—Makes excellent quality hay, having produced as high as two tons of air-dried hay per acre—Is a legume, therefore a soil builder, adding both nitrogen and humus to the soil—Is drouth-resistant.

**RATE OF SEEDING:** 15-20 lbs. per acre where full crop is desired first year. Four to 10 lbs. if first crop is permitted to reed itself.

Price of Genuine Mammoth Lespedeza, grown from Certified Seed: 1lb, 15c; 5lb, 50c; 25lb, (1 bu.) \$1.75; 100lb, (4 bu.) \$6.50. (Sacked Free.)

### INOCULATE WITH NITRAGIN

Buy Only the Genuine Korean. It Pays to Buy the Best. Beware of Cheap, Mixed, and Weedy Seed.



## SERICEA LESPEDEZA

(PERENNIAL LESPEDEZA)

heavy seed producer. On good soil will grow to a height of five (5) feet the first year, producing three tons of hay on first cutting. Plant very shallow in rows 3½ feet apart, 3 to 4 lbs. to acre. Inoculate with Nitragin. Price: 1lb, 60c; 2lb, or over, 50c per lb.

A new perennial legume thriving well on poor as well as acid soils. A wonderful land builder, and a very

## SEED SHORTAGE

With over 30,000,000 acres of Cotton, Wheat, Corn, Rice, and Tobacco land either taken out or to be taken out of production this year, it is evident that a tremendous demand for legume seed will develop this spring. As a matter of fact, it will be impossible for all this idle land to be seeded to legumes and hay crops, since our estimated available seed supply is not large enough. This will undoubtedly mean a material rise in seed prices. Those who desire to sow their rented land to legumes and pasture mixtures should therefore secure needed seed supplies at the earliest possible moment. Much of this government rented land will probably have to lie idle or be seeded to small grain remembering, however, that with one exception no crop seeded on this idle land can be harvested either for hay or grain this year, but must be plowed under. The exception is this: If a farmer has seeded this land to permanent pasture without a nurse crop, he will be allowed to pasture it this year. Order your alfalfa, sweet clover, common clovers or pasture mixture early, and thus have the best chance to make good use of your land.—WALLACES' FARMER.

### U. S. Dept. of Agriculture Recommends

Pasture Mixtures to replace acreage withdrawn under the Allotment Plan, as follows—(applying to the St. Louis area, approximate 300-mile radius.)—Information as to Mixtures for other regions furnished on request.		
Mixture No.1 Good Well-Drained Soil.	Mixture No.2. Poor Well-Drained Soil.	Mixture No.3 Wet Poorly-drained Soil
Ky. Bluegrass 30%	Orchard Grass 30%	Timothy 30%
Timothy 25%	Redtop 20%	Redtop 50%
Redtop 10%	Timothy 10%	Alsike 20%
Red Clover 5%	Lespedeza 40%	
Lespedeza 30%		

In addition to above Grasses, we recommend Meadow Fescue, also known as English Blue Grass, either for straight sowing or in mixtures. It is a tufted, deep-rooted, long-lived perennial, adapted to about the same area as Timothy, producing an abundance of leaves and a good sod; very good for early and late pasture. In shady places, thrives quite as well as Orchard Grass.

Price on items for these Mixtures quoted on request. Ask for price on Mixtures made up, specifying Mixture desired.



For your protection, every package of Nitragin bears the Expiration Date, Legume Germ Count when packed, and the Price. Don't gamble with your Seed, Money, Time and Labor.

Know what you are buying! Insist on NITRAGIN!

### NITRAGIN INOCULATION PRICES

WHEN ORDERING, ALWAYS SPECIFY KIND OF SEED.  
ALFALFA, ALL CLOVERS, SOY BEANS, COW PEAS, LESPEDEZA, LIMA BEANS,

Size	Price	Size	Price
½ bu. ....	\$.35	1 bu. ....	\$.35
1 bu. ....	.65	2 bu. ....	.65
2 ½ bu. ....	1.40	5 bu. ....	1.40
		10 bu. ....	2.45

### PEAS, VETCH, BEANS, AUSTRIAN WINTER PEAS

½ bu. ....	\$.35
1 bu. ....	.50
*1 ½ bu. ....	.80
5 bu. ....	2.25
**"100 lb size" packed only for Vetch and Peas.	

### GARDEN NITRAGIN FOR PEAS, BEANS, SWEET PEAS AND LUPINES

Can be used on any amount of seed, up to 8 lbs. Price, 25c

We give no warranty, express or implied as to description, quality, productiveness or any other matter of any Seeds, Bulbs, and Nursery Stock we sell and will not in any way be responsible for the crop. When mentioned, purity and germination tests are for information only and without guarantee. ARCHIAS SEED STORE CORP.



# Archias' Big-yielding Clovers, Grasses & Forage Seeds

FINEST QUALITY  
LOWEST PRICES

## ALFALFA

60 Lbs. to bu., Sow 15 Lbs. Per Acre	
Price	2 Bu. Per Bu.
Alfalfa, Fancy, Kansas grown, 99% pure	\$ 9.00 \$ 8.75
Alfalfa, Hardy, Dakota No. 12, 99% pure	11.00 10.75
Alfalfa, Dakota grown Grimm, 99% pure	12.00 11.75

## CLOVER

60 Lbs. to bu., Sow 12 Lbs. Per Acre	
Clover, Red, fancy, new crop	\$10.00 \$ 9.75
Clover, Red, choice	9.75 9.50
Clover, Mammoth, fancy	11.00 10.75
Clover, Alyske, fancy	11.00 10.75
Clover, Alyske, choice	10.75 10.50
Alyske Clover and Timothy	5.25 5.00
Sweet, White Blossoms hulled	4.25 4.00
Sweet, Yellow Blossom, hulled	4.50 4.25
Clover, White Dutch, fancy, per lb.	.50

## KOREAN LESPEDEZA

25 Lbs. to bu., Sow 15 to 20 bu. Acre  
Adapted to Any Soil; Sweet or Sour, A Soil-Builder. Adds Nitrogen and Humus to Your Soil.

Lespedeza (Korean) 25 lbs.	\$1.75
100 lbs.	6.50
Lespedeza (Sericea) A perennial money maker for the farmer.	
Lb., 60c; 2 lbs. or over,	.50c per lb.

## TIMOTHY

45 Lbs. to bu., Sow 12 Lbs. Per Acre	
Timothy, fancy, 98% pure	\$4.00 \$3.90
Timothy, choice, 97% pure	3.90 3.80

## RED TOP (Herd's Grass)

14 Lbs to bu., Sow 8 to 12 Lbs. to Acre	
Red Top, fancy,	1.85 1.75
Red Top, choice,	1.75 1.65

## KENTUCKY BLUE GRASS

14 Lbs. to bu., Sow 30 to 40 Lbs. to Acre	
Kentucky Blue Grass, fancy	2.35 2.25

## ORCHARD GRASS

14 Lbs. to bu., Sow 20 to 25 Lbs. to Acre	
Orchard Grass, fancy	1.65 1.55

## MEADOW FESCUE GRASS

(ENGLISH BLUE GRASS)  
24 Lbs. to bu., Sow 25 to 35 Lbs. to Acre

English Blue Grass, fancy	2.25 2.15
---------------------------	-----------

## CANE-KAFFIR (for fodder)

50 Lbs. to bu., Sow 50 to 60 Lbs. to Acre

Cane for Fodder, Orange or Amber	1.25 1.20
Feterita	1.30 1.25
Kaffir Corn, White	.95 .90

## Grohoma

Produces immense crops of both hay and seed of finest quality.  
5 Lbs. 25c; 25 Lbs. .75c

## Sudan Grass

A new forage yielding wonderful crops of fine sweet hay.  
40 Lbs. to bu., Sow 15 to 30 Lbs. to Acre  
10 Lbs., 75c; 100 Lbs. \$6.00

## MISCELLANEOUS SEEDS

Oats, Columbia	} Market Price
Bearded Barley	
German Millet, choice	
Buckwheat, Japanese	
Flax Seed	
Oats, Red Texas Rust Proof	
Broom Corn, Standard Evergreen	
10 Lbs.	.75
Rye for Seed	1.10 1.00

## RAPE SEED

Dwarf Essex Rape,	
.25 lbs., \$1.75; 100 lbs.	6.75

## LAWN GRASS ETC

Archias' Evergreen Lawn Grass,	
1 lb., 45c; 3 lbs., prepaid	\$1.25
Vigoro Lawn Fertilizer,	
5 lbs., 50c; 25 lbs.	1.50
50 lbs., \$2.50; 100 lbs	4.00
Lime for Lawns, 50 lbs., 50c; 100 lbs	.85

## COW PEAS

60 Lbs. to bu., Drilled 15 to 20 Lbs. Acre

Whip-Poor Will	} Prices on Application
New Era	
Mixed Peas	
Canadian Field Peas	

## SOY BEANS

60 Lbs. to bu., 30 to 40 Lbs. to Acre

Soja Beans, Early Morse	} Prices on Application
Soja Beans, Midwest	
Soja Beans, Early Black Beauty	
Soja Beans, Early Wilson	
Soja Beans, Virginia Early	

## SEED CORN

Reid's Yellow Dent—Certified	} Prices on Application
Reid's Yellow Dent—not certified	
Boone County White—Certified	
Boone County—not certified	
Archias' Golden Mortgage Lifter	
Cartner's Yellow	
Iowa Gold Mine	
Johnson County White	
Hickory King	
Archias' Speckled Beauty	

## Bayer Dust and Semesan, Jr.

Dry Treatment for Seed Corn

The 4-oz. tin (10 acres)	\$ .50
The 1-lb. tin (40 acres)	1.75

## ARMOUR'S RELIABLE FERTILIZERS

Sacked 125 lbs. per bag

Big Crop Fertilizer, 4-16-4	} Prices on Application
Big Crop Fertilizer, 2-16-2	
Big Crop Fertilizer, 2-12-2	
Big Crop Steamed Bone Meal, 2-24	
Big Crop Raw Bone Meal, 3 1/2-22	
Big Crop Acid Phosphate, 0-20-0	
Big Crop Acid Phosphate, 0-16-0	

## Seed Sowers, Fanning Mills, Etc.

Horn Seed Sower	\$ .95
Cyclone Seeder	1.85
Clipper Fan Mill No. 1B	36.00
Grain Bags, each 35c; per 100	30.00

## SEED POTATOES

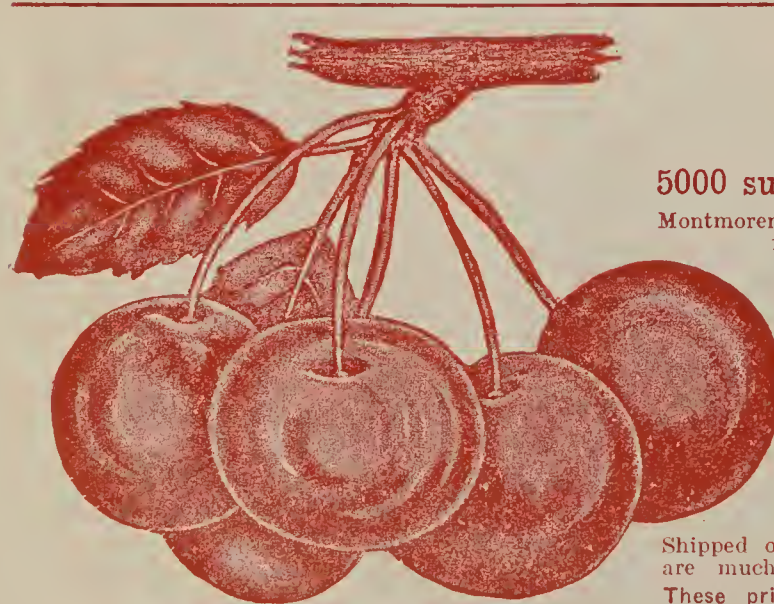
Irish Cobbler, Certified	} Prices on Application
Red River Early Ohio, Certified	
New, Early Six Weeks, not certified	
Red River Early Ohio	
Bliss Triumph	
Irish Cobblers	

## Semesan Bel—Potato Disinfectant

4 oz., 50c	1 lb., \$1.75	5 lbs., \$8.00
------------	---------------	----------------

## ONION SETS

Yellow Bottom Sets	} Prices on Application
Red Bottom Sets	
White Bottom Sets	
Winter Top Onion Sets	
Bermuda Onion Plants—See page — of Catalogue.	



## Bargain in Cherry Trees

While they last—ORDER TODAY!

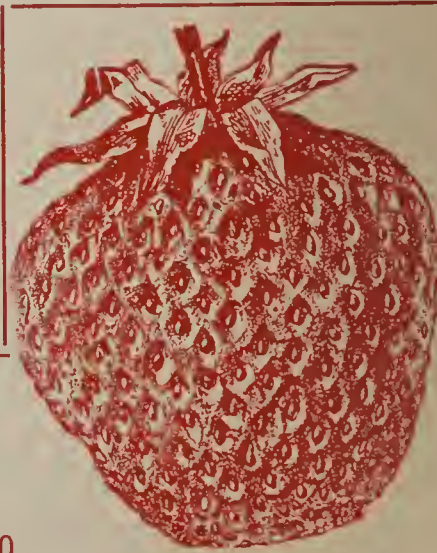
5000 surplus Large Red Montmorency—2 year, 11-16 Trees

Montmorency is especially recommended for the Middle West states because of its extreme hardiness and dependable crops of large cherries.

3 Trees	6 Trees
\$1.00	\$1.75
10 Trees	25 Trees
\$2.85	\$6.00
100 Trees	\$20.00

OFFERED ONLY UNTIL  
APRIL 15th

Shipped only by express or freight; as trees are much too large to be sent by mail. These prices are for immediate order only.



## ARCHIAS' RADIO BARGAIN STRAWBERRY COLLECTION

25 Mastodon-Everbearing	\$ .50
50 Senator Dunlop, old favorite	.50
50 Blakemore, finest new variety	.60 Regular \$1.60 value
125 HEALTHY PLANTS FOR ONLY (postpaid)	\$1.00



## Conkey's Buttermilk Starting Feed

FEED IT FIRST SIX WEEKS

Raises Husky Chicks  
ALL CONKEY'S FEEDS With Buttermilk and Y-O

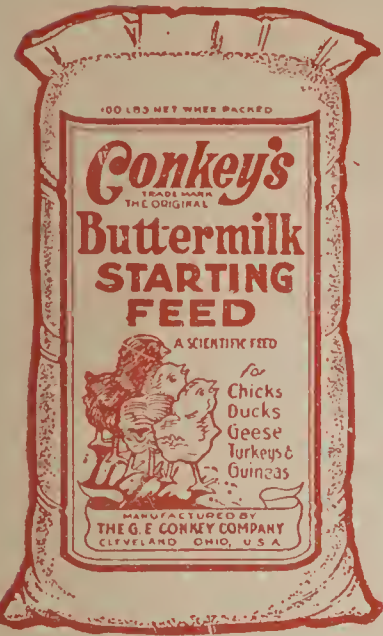
Conkey's is all the chicks need the first 6-weeks except greens, charcoal, grit, clean water and some fine scratch grains in the litter for exercise. Give grit and water from the start. During the second week add green stuff and in the fourth week finely cracked grains, like Conkey's Chick Grains.

Conkey's Buttermilk Starting Feed, 5 lbs., 25c; 10 lbs. 40c; 25 lbs. 95c; 100 lbs. \$3.00.

Conkey's Growing Mash, 10 lbs., 35c; 25 lbs., 85c; 100 lbs., \$2.75.

Conkey's Chick Grain, 25 lbs., 85c; 100 lbs., \$2.00.

Charcoal, granulated 50c; \$1.15; \$3.25.



## KEEP YOUR CHICKS HEALTHY



FEED B-K  
in All Drinking Water

B-K added to all drinking water helps to prevent the spread of contagious disease germs and to keep the chicks' mouths and throats in a healthy condition. We sell B-K.

ARCHIAS SEED STORE CORPORATION

Distributors  
Sedalia, Mo.

## ARCHIAS FEEDING TROUGHS

Buttermilk Feeding Troughs, heavily galvanized, which is not affected by the acids of milk and similar feeds.



The trough and tops are each stamped in one piece, no seams, rivets or solder used. Sliding Top makes it easy to clean and fill. Made in two sizes.

Length	Shipping Weight	Each
10 in.....	.1 lb. ....	\$.15
20 in.....	.1 lb. ....	.30

## GRIT AND SHELL BOXES

By Mail, add Postage.

The feeding of grit, ground shells, and charcoal is now recognized as an essential part of the diet, to keep fowls in healthy, prime condition. There is no more economical method of supplying grit, etc., than those practical, inexpensive compartment boxes. No solder used in their construction.

Can also be used as feed hoppers for little chicks.

Made of heavy galvanized iron in three sizes. No. 45 for baby chicks has a square bottom, the other sizes have round bottoms.

No.	Compartments	Shipping Weight	Each
No. 45	Two	2 lbs.	\$.25
No. 9	Three	3 lbs.	.50
No. 90	Four	4 lbs.	.75

By mail, add Postage.

## ARCHIAS' AUTOMATIC FEEDER AND FOUNTAIN



It feeds water, grain, grit, oyster shell etc., and is the most sanitary fountain on the market. Any size Mason glass jar fits it. We do not furnish the jars. 10c each; 3 for 25c; 6 for 45c; 12 for 85c, postpaid.

## BIG BARGAINS IN BEE KEEPERS' SUPPLIES

### ARCHIAS' DOVETAILED HIVES

PACKED FIVE IN A CRATE

No. 1—Dovetailed (like cut), 8-frame a 1½-story hive for comb honey, with eight improved Hoffman frames; follower board, one super, with a follower and two wedges; 6-section holders with wood separators, 24 1-lb. sections and brood frames, nails for making hives and trimmings, .....\$3.75

No. 3E—Same as above without sections and foundations, .....\$3.30

### ARCHIAS' 10-FRAME DOVETAIL HIVES

One-story hive, no starters, No. 1-A. Each, \$2.55; five for \$11.75

### BEE SMOKERS

Higginsville Smoker, best made .....\$1.10  
Bingham Conqueror Smoker ..... .80  
Bingham Smoke Doctor ..... 1.00

### BEE ENTRANCE GUARDS

Large size, 20c each; 20 for .....\$2.00

Favorite Bee Escape. Price 15c each, postpaid. Board for Escape, 30c each.

### COMB FOUNDATION OR STARTER

Extra thin for sections, 1-lb., 70c; 5 lbs., .....\$3.25  
Medium for Brood Chambers, 1 lb., 62c; 5 lbs., ..... 2.85  
Postage, 3c pound extra if sent by mail.

### BEE VEILS

Price, postpaid .....\$.75

### Wood-Bound Slatted Zinc Honey Boards

Eight-Frame, 50c each; 10 for \$4.50; 10-frame .....\$6.04

### HONEY SECTIONS

First quality white northern Basswood; polished on both sides. Any style, but standard size only. Unless you order otherwise we will send you section 4¼x4¼x1 7/8".

### ONE-PIECE SECTION—OPEN TOP AND BOTTOM—NO. 1 QUALITY

100 .....\$1.30      500 .....\$ 6.25  
250 ..... 3.50      1000 .....12.50

Plain sections, 3 5/8x4 1/4x4 1/4 and 4x5 are 50c per 1000 less than bee-way (open top and bottom) sections.

Catalog of Bee Keepers' Supplies FREE, Postpaid.





1884 *The Golden Anniversary of* 1934

# "SURE-SEED" SERVICE

## JUST FIFTY YEARS AGO

the Archias Seed Store was established, specializing in high grade garden, field and flower seeds. An eight-page catalog without illustrations was issued the first year. At that time the mail order seed industry was in its infancy—comparatively few varieties of vegetables were available.

Succeeding years have added new varieties of merit and widened our territory by increased circulation until Archias "Sure Seeds" have become famous for purity and vitality among the best gardeners and farmers of this country. The utmost care has been exercised in procuring superior stock seed from the choicest specimens, therefore representing the best that money, modern skill and science can produce—cleaned and graded with up-to-date machinery insuring highest vitality.

### Free Seeds for Early Orders

With every order for \$1.00 or over sent us before April 1st, 1934, we will send you absolutely Free 5 large packets (1 each) of the following Choice Flower Seed:

Japanese Double Pink. Choice mixed colors.

Chinese Woolflower. Crimson. Zinnia. Double Dahlia-Flowered mixed.

Phlox Drummondii. Choice mixed.

Poppy, Flanders Field. Scarlet.

This is the greatest offer we have ever made. Remember, only 1 collection Free to each customer who sends us an order of \$1.00 or over, accompanied with the cash, before April 1st, 1934.

Our fifty years of successful business and constant expansion have been paved with fair dealing, untiring, courteous service, and honest seeds at honest prices.

We humbly point with pride to the three generations of the Archias family in the Seed industry as shown on this page—Leon Joseph Archias, pioneer seedsman and florist, who devoted his life to the growing of seeds, plants, and nursery stock and known to our older customers for his sincere generous and untiring efforts to help his patrons to win success. Leon H. Archias Sr., our President and active member who has devoted his entire life to the seed industry. Leon H. Archias Jr., our Vice-President, who manages the floral department. Every order for cut flowers, funeral designs, plants, or nursery stock receives his personal supervision.

Of course the continued success could not have been possible without the loyal co-operation of our employees and patrons whom we sincerely thank and with whom we hope for as friendly relations in the future as they have been in the past.

Sincerely yours,

## Archias Seed Store Corporation

Owners of Archias' Floral Co., Greenhouses and Nursery.

106-108 East Main Street  
Sedalia, Missouri

L. H. ARCHIAS, President.

L. H. ARCHIAS, Jr., Vice-Pres. and Mgr. Floral Dept.  
L. ARCHIAS, Secretary.

MISS JOSEPHINE RAKE, Assistant Sec'y.

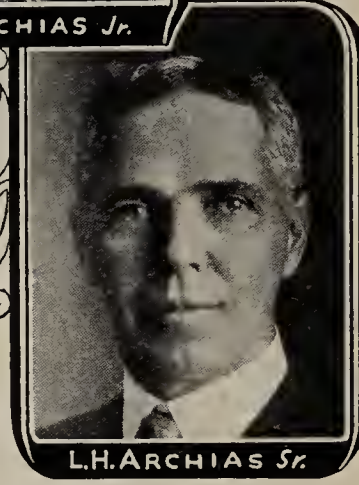
L. A. KIPPING, Mgr. Seed Dept.  
W. M. HOWELL, Mgr. Shipping Dept.



LEON ARCHIAS



L.H. ARCHIAS Jr.



L.H. ARCHIAS Sr.

### How to Send Money

Money can be sent safely either by post office order, bank draft, express order or registered letter. We receive postage stamps the same as cash. No mail orders accepted or filled for less than 25c.

#### PARCEL POST RATES

	1 lb.	Each additional lb. or fraction
First Zone—up to fifty miles	8c	1c
Second Zone—50 to 150 miles	8c	1c
Third Zone—150 to 300 miles	9c	2c
Fourth Zone—300 to 600 miles	10c	4c
Fifth Zone—600 to 1000 miles	11c	6c
Sixth Zone—1000 to 1400 miles	12c	7c
Seventh Zone—1400 to 1800 miles	14c	9c
Eighth Zone—over 1800 miles	15c	11c

Ask your Postmaster what zone you are in, making note of it and use this table.

### We Ship Anywhere by Parcel Post

Seeds, Plants and Bulbs can be mailed, the rate being one cent for each two ounces up to eight ounces. All packages over eight ounces take pound rates as per table at left. In ordering a pound, remit postage for two pounds, as packing will increase weight.

The weight limit in all zones is 70 pounds.

Bulk limit (measurement around package both ways), in all zones, 72 inches.

Liquids and goods packed in glass must go by express.

### Same Day Shipping Service

Orders received in the morning's mail are usually shipped the same day. We believe in service, we know when you order from us you need it. We have every facility for filling and shipping orders promptly. We have an immense stock of all the items shown in this book. You can depend on immediate shipment and prompt delivery.

### NON-WARRANTY

The Archias' Seed Store Corp. gives no warranty, express or implied, as to description, quality, productiveness, or any other matter of any seeds they send out, and will not be in any way responsible for the crop. When mentioned, purity and germination tests are for information only and without warranty.



# Japanese Rock Garden Seeds



The following seeds were imported by us direct from one of the famous Japanese seed growers. They are hardy and adapted to rock garden planting and will give you endless pleasure.

## 12 Hardy Perennials for Only 75c, Postpaid

Easily grown from seed and suitable for Rock Gardens.

- ALYSSUM saxatile (Basket of Gold). Yellow.
- ANCHUSA italica (Hardy Giant Forget-me-nots).
- AQUILEGIA (Columbine). Mixed double and single.
- CAMPANULA. Finest colors in splendid mixture.
- COREOPSIS lanceolata grandiflora (Semi-double).
- DAISIES, Shasta, Alaska Supreme.
- DIANTHUS (Hardy Garden Pinks). Finest mixed.
- DIGITALIS (Foxglove). Archias' Special Mixed.
- FORGET-ME-NOTS, Hardy (Chinese). Rich blue.
- POPPY, Oriental Hybrids, Hardy. Mixed.
- SWEET WILLIAM. Mixed double and single, select colors.
- VERONICA, Dwarf. Dark blue spikes.

Choice of above, pkt., 10c; 3 pkts., 25c; 6 pkts., 45c; or one packet each of the 12 varieties for only 75c, postpaid.

## 12 Hardy Annuals for Only 75c, Postpaid

Selected for Rock Gardens. Bloom all season and are of easy culture.

- ABRONIA (Sand Verbena). Bright rose, late bloomer.
- AFRICAN GOLDEN DAISY. Showy daisy flowers on long stems.
- AGERATUM, Blue Perfection. Almost hardy.
- ARCTOTIS grandis (Blue-eyed African Daisy).
- BELLIS (Giant English Daisy). A fine border plant.
- CANDYTUFT HYBRIDS. All colors mixed.
- CHRYSANTHEMUMS. Single and double mixed. Annual.
- ICE PLANT. Old favorite, suitable for baskets or rocks.
- LOBELIA compacta. Blue.
- PORTULACA, Single and Double. In splendid mixture.
- SWEET ALYSSUM. White. Hardy annual.
- VIRGINIA STOCKS. Best mixed sorts.

Choice of above, pkt., 10c; 3 pkts., 25c; 6 pkts., 45c; or one packet each of the twelve varieties for only 75c, postpaid.

# Flowers Make a Home More Beautiful

EVERYONE should give more attention to planting flowers around their home. There is nothing that adds more to the looks or beauty of a home than a bed of flowers. They should be given space by the farmer as well as those who live in the city. The care is small as most flowering plants will live in almost any soil. The soil best adapted to flowers generally is a light loam containing a sufficient amount of sand to render it porous. Many flowers are larger and finer if produced on plants of vigorous growth, hence, a portion of the garden should be prepared by deep digging, thorough pulverization, and liberal enriching with plenty of well-rotted manure. We recommend Vigoro or Wizard Sheep Manure which is free from weed seeds. However, some other varieties produce largest and finest flowers on rather light, poor soil. The principal thing is to make the soil as fine and smooth as possible. Never plant flower seed when the ground is wet. Cover each lot of seed to a depth which should not be greater than six times the thickness of the seed. Plant in rows, press the soil firmly over the seed. The young plants should be thinned out to prevent crowding.

Plants are usually divided into three classes. Annuals, Biennials and Perennials.

Annuals are plants that usually live but one season.

Biennials are plants that bloom the second year from seed and the plant dies after blooming.

Perennials are plants that bloom the second year from seed and the plant lives and blooms for several years.

Our flower seeds are put up in beautiful lithographed packets, with cultural directions printed on the back of each packet.



Aquilegia.

ABRONIA umbellata grandiflora (*Sand Verbena*). Half-hardy annual. A charming trailing succulent plant, with verbena-like heads of fragrant flowers, of bright rose with white center. It delights in a dry, poor soil and sunny situation on rockwork.

Pkt., 10c.

AMARANTHUS. These plants give brilliant contrasts of color, being useful for tall borders, groups and foliage effects.

Tricolor (*Joseph's Coat*). Leaves variegated red, yellow and green.

Mixed . . . . . Pkt., 5c.



Alyssum Saxatile.



Ageratum.

AGERATUM. A hardy annual of bushy habit, with effective lavender, blue and white flowers. We consider this to be one of the best bedding plants grown, they stand our hot dry climate and the plants are covered with bloom from early summer till frost.

Mixed Colors . . . . . Pkt., 5c.

Blue Perfection . . . . . Pkt., 10c.

ALYSSUM, Sweet. Hardy annual, covered with pure white, fragrant blooms. The most popular of all

border plants. Pkt., 10c; ½ oz., 20c; oz., 35c.

Saxatile compactum (*Basket of Gold*). A pretty perennial Alyssum for rock gardens and borders. The plants spread freely, and produce masses of bright yellow flowers in early spring. 9 inches.

Pkt., 10c.

ANCHUSA italica (*Dropmore Variety*). A hardy perennial bearing an abundance of rich gentian flowers. 3 to 5 feet.

Pkt., 10c.

AQUILEGIA (*Columbine*). Among the earliest flowering perennials. Favorite for border plantings and for cut flowers. 2 to 3 feet.

Special Mixture Double Varieties . . . . . Pkt., 10c.

Single Variegated Mixed . . . . . Pkt., 5c.





**ANTIRRHINUM** (*Snapdragon*). Very hardy and easy to grow, and produce an abundance of flowers from the time they begin blooming in the spring until frost. May be planted either in the spring or fall, and no flower garden should be without them. The tall varieties, about 3 feet high, are best planted in the background of your garden. The semi-dwarf kind, about 18 inches, is excellent for bedding. Snapdragons are among our most popular flowers, and are especially valuable for cutting.

Tall Pink Tall Bronze Tall Scarlet Tall Yellow Tall Mixed  
Price, any of the above, pkt., 10c.  
Dwarf Varieties. Finest mixed ..... Pkt., 10c.



California Giant Asters.



Balsam.

**BACHELOR'S BUTTON** (*Globe Amaranth*). A desirable everlasting, valued for its handsome small globular flower heads which, if cut when well matured, will retain their beauty through the winter. For use in winter bouquets the flowers should be cut before they are fully matured and dried in a cool shady place, hung up by the stems to keep their natural shape. Seeds germinate slowly; start in hotbed, or soak in warm water to soften the woolly husk.

Pkt., 5c; oz., 25c.

**BALSAM**. Sometimes called “Touch-Me-Not” or “Lady Slipper.” A tender annual, growing about 18 inches tall in the shape of a small tree, producing all along the branches showy single and double flowers like small roses. Should be grown in rich soil.

Double Camellia-Flowered. Finest mixed. Pkt., 5c; ¼ oz., 15c; oz., 40c.

**BARTONIA aurea**. One of the most showy of annuals producing golden yellow flowers. The foliage is gray and thistle-like, and is exceedingly brilliant in the sunshine. Pkt., 10c.

**CALLIOPSIS**. Beautiful annual; large bright golden yellow flowers, varied with rich brown. Excellent for cutting and decoration. Height 2 feet. Pkt., 10c; oz., 25c.

**CANNAS, FROM SEED**. Large flowering French. Large pkt., 5c; oz., 25c.

**CANNA ROOTS**. See Summer Flowering Bulbs.

**CANDYTUFT**. Giant Empress. Hyacinth-flowered large, pure white. Pkt., 5c; ¼ oz., 15c; oz., 45c.

Dwarf Hybrids. Mixed. Pkt., 5c; ¼ oz., 20c.

All Colors Mixed. Pkt., 5c; ½ oz., 15c; oz., 25c.



Candytuft.



Calendulas.

## Wilt Resistant ASTERS

(See inside front cover).

**ARCHIAS' AMERICAN LATE BRANCHING**. We have spared nothing to make this mixture perfect, incorporating in it the best productions of Aster specialists of this country and Europe.

Pkt., 10c; ¼ oz., 35c; ½ oz., 65c.

**CALIFORNIA GIANT ASTERS**. A new giant variety of the Crego type, combined with the Beauty Asters. Have long, strong stems and are fine for cutting. We recommend this type of Aster very highly. 3 feet.

Pure White .. 15c	Pkt.	Dark Purple .. 15c	Pkt.
Peach Blossom .. 15c		Deep Rose ... 15c	
Light Blue .. 15c		Fancy Mixed .. 15c	

Special Collection of 5 Colors, 50c.

**CREGO'S IMPROVED GIANT COMET ASTERS**. The finest of this type with long, full fluffy flowers. Mid-season. Height 2½ feet.

Crimson .. 10c	Pkt.	Deep Lavender .. 10c	Pkt.
Dark Blue .. 10c		Pure white ... 10c	
Light Blue .. 10c		Mixed .. 10c	
Shell Pink .. 10c		¼ oz., 50c. .. 10c	

Special Collection of 6 Colors, 50c.

**SUNSHINE ASTERS**. A delightful new type of Aster; has two rows of outer guard petals, while the center is made up of tiny quills of a contrasting shade. Borne on long stems; excellent for cut flowers, lasting a long time in water. Height 24 inches.

Blue. Lilac. Pink. White. Mixed.

Each, pkt., 25c.

**CALENDULA** (*Pot Marigold*). A well known, old-fashioned annual that has long been in favor. During the past few years they have greatly increased in popularity and are now largely used by florists for cut flowers. They are of easy culture, succeeding in almost any soil and are in bloom from early summer till frost. Plants are 1½ to 2 feet high.

Ball's Orange. Florist's strain of bright orange. Pkt., 15c; ¼ oz., 35c; oz., \$1.00.  
Radio. Petals attractively quilled. Deep golden yellow.

Prince of Orange .. Pkt., 10c; oz., 30c. 3 pkts., 25c; ¼ oz., 45c; ½ oz., 75c.  
Lemon Queen .... Pkt., 10c; oz., 30c.  
Choice Mixed .... Pkt., 10c; oz., 25c.

**CANTERBURY BELLS** (*Campanula medium*). Handsome, easily grown herbaceous plants of stately branching habit and profuse bloom for beds and backgrounds. They produce long racemes of striking bell-shaped or saucer-shaped flowers of rich colors.

Single Mixed ..... Pkt., 10c; oz., \$2.00.  
Double Mixed ..... Pkt., 10c; oz., \$2.00





*Celosia.*



*Centaurea—Cornflower.*

**CHRYSANTHEMUM.** These outdoor "summer Chrysanthemums" are showy and effective for bedding or borders in the garden and desirable for cut flowers. Plants become more bushy and shapely if pinched back in early growth and the practice of disbudding will result in much larger flowers. These annuals are not the winter flowering sorts sold by florists and which are propagated only by division of roots.

Single Mixed ..... Pkt., 10c.  
Double Mixed ..... Pkt., 10c.

**COREOPSIS.** This is one of the finest of hardy plants, with large, showy, bright yellow flowers produced in the greatest abundance from June till frost. As cut flowers they stand near the head among hardy plants.  
Pkt. 10c.



*Double Cosmos.*

**BOOK ANNUALS, LITTLE BOOK OF.** (Hottes). Ills., 116 pp. A reliable guide to culture on annual flowers, over 100 separate species are described and full directions for their use. \$1.50, postpaid.

**CHINESE WOOL-FLOWER** (*Celosia Childsi*). This charming Celosia with their large round silky brilliant scarlet heads completely cover the plants which are extremely attractive, holding their color even after dried.

Pkt., 5c; 1/8 oz., 15c;  
1/4 oz., 25c.



*Single Chrysanthemum.*

**RICINUS** (*Castor Oil Plant*). Luxuriant rapid-growing annuals with palm-like leaves. Excellent for background or center of beds of foliage plants, the effect being especially striking after the brilliantly colored fruit is formed. Giant Zanzibar ..... Pkt., 5c; oz., 15c; 1/4 lb., 40c.

**CARNATION** (*Marguerite*), are names applied by different people to the same or to different plants of several species as well as to hybrids between them. They are all easily grown from seed and very free blooming, the flowers being bright colored and with a most delicious clove-like fragrance.  
Mixed ..... Pkt., 10c.



*Carnation.*

**CELOSIA** (*Coxcomb*). *Cristata* or *Crested Dwarf* Sorts. Very popular annuals of easy culture, producing large, ornamental, comb-like heads like ruffled chenille. Prized for pots or summer flower beds.

*Cristata*. Blood-red combs and brown foliage. Pkt., 10c.  
*Feathered Coxcomb, Mixed*, 18 to 24 in. Pkt., 10c.

**CENTAUREA cyanus** (*Cornflower*). Hardy annuals of easy culture; showy for the garden and fine for cutting. Blooms from June until frost. Double flowering. Blue, rose-pink, white, and mixed. Pkt., 5c.

*Gymnocarpa* (*Dusty Miller*). An especially fine variety for beds, borders and edgings. Silvery white, finely divided leaves. 8 to 12 inches. Pkt., 10c; 1/4 oz., 30c; 1/2 oz., 50c; oz., 90c.

*Imperialis* (*Giant Sweet Sultan*). Bushes are covered with large, fluffily ball-shaped, sweet-scented flowers. Hardy annual. 2 feet. All Colors Mixed ..... Pkt., 10c.

**COSMOS.** A grand fall flowering, hardy annual, producing thousands of beautiful blooms when other flowers are scarce. To have earliest blooms start indoors and transplant after frost. Pinching them back several times when a foot high induces earlier blooming and a more bushy growth. They prefer a sandy soil, not too rich.

Early Flowering .. Pkt., 5c; oz., 50c.  
Mammoth Mixed ..... Pkt., 5c.  
Double Crested Mixed ... Pkt., 15c.

**COBAEA scandens** (*Cathedral Bells*). One of the best climbers, with fine foliage and large bell-shaped purple flowers. Grows rapidly, 20 to 30 feet. Plant in the house, edgewise, cover lightly and transplant outside in May. Pkt., 10c; 1/4 oz., 25c.



*Coreopsis.*



**DAHLIAS.** The flowers are invariably of largest size, with gracefully arranged petals. Particularly fine for cut flowers, but are also most suitable for garden decoration.

Double Mixed .....Pkt., 10c.  
Single Mixed .....Pkt., 10c.

**DAISIES (Shasta Daisy).** Well-known perennial about two feet high, beautiful flowers with pure white petals, with golden center. Fine for cut flowers.

Pkt., 10c.

**English Daisy (Bellis Perennis).** Charming little plants for edging and borders. Also used for low beds.

Double Mixed .....Pkt., 10c.

**African Orange Daisy (Dimorphotheca).** One of the showiest garden annuals. Compact, bushy plants with orange-gold, daisy-like blooms on long stems.

Pkt., 10c; ¼ oz., 30c.

**African Daisy Hybrids.** Finest mixed in gay colors.

Pkt., 10c; ¼ oz., 30c.

**DATURA (Angel's Trumpet).** Handsome plants for sub-tropical bedding in summer, having large trumpet-shaped fragrant flowers. They should be given a light soil and a sunny sheltered position. Make fine pot plants for the greenhouse.

Pkt., 10c.

**DIANTHUS or PINK.** One of our most highly prized flowers for bedding and cut flowers. Sow early indoors or in a sheltered location, and they will bloom the first season, and if lightly protected, continue flowering the next year.

**Chinensis or China Pink.** Double mixed. Pkt., 5c; ¼ oz., 25c.

**Double Clove Pinks (Plumarius flore pleno).** Hardy. Pkt., 10c.

**Heddewigi Mixed.** Flowers three inches across; rich, beautiful colors. Pkt., 5c.

**Archias' Special Mixture.** Of single Dianthus. Of easy culture.

Pkt., 5c; ¼ oz., 25c; ½ oz., 40c; oz., 75c.

**DIDISCUS coeruleus (Blue Lace Flower).**

An easily grown garden annual that has within the past few years become very popular for use as a cut flower. The plants grow about 2 feet high and furnish a profusion of beautiful umbel-shaped flowers of pale cerulean or heavenly blue color. Pkt., 10c.

**DELPHINIUM (Hardy Perennial Larkspur).**

**Gold Medal Hybrids.** A highly recommended strain of vigorous habit. The flowers are of immense size, borne on long spikes in the most desired shades of blue, lavender and other beautiful colors.

Mixed .....Pkt., 15c.

Belladonna. Light blue .....Pkt., 10c.

Bellamosun. Dark blue .....Pkt., 10c.

**LARKSPUR (Annual Varieties).**

Tall Mixed. Pkt., 5c; ¼ oz., 15c.

Dwarf Mixed. Pkt., 5c; ¼ oz., 15c.

Archias' Giant Imperial (Bodger's Strain).

Tall. Separate colors. Pkt., 15c.

Giant Imperial Tall Mixed. Pkt., 15c.

Archias' Double Dwarf Emperor (Bodger's Strain). Finest Mixed. Pkt., 10c.

**DIGITALIS (Foxglove).** Handsome stately plants with ornamental green leaves and pendulous flowers, white, pink, blue, purple, etc., beautifully spotted. Height 2 feet.

Mixed Colors .....Pkt., 10c; oz., \$1.00.



*Dimorphotheca.*



*Shasta Daisies.*



*Dahlias.*

**ESCHSCHOLTZIA (California Poppy).**

Easily grown annuals producing bright, poppy-shaped flowers from spring till frost. Plant in early spring or fall, and rake in lightly.

Golden West ..... Pkt., 10c; oz., 35c.

Burbank's Crimson .... Pkt., 10c; oz., 35c.

**EUPHORBIA (Snow-on-the-Mountain).** A

tall annual of branching habit with veined and margined foliage, surmounted with small white flowers. Hence its name. Very effective for beds and borders. Grows 2½ ft. high.

Snow-on-the-Mountain ..... Pkt., 5c.

Heterophylla (Annual Poinsettia or Mexican Fire Plant) ..... Pkt., 10c.



*Digitalis.*



*Delphinium.*





*Gaillardia.*

**FORGET-ME-NOT** (*Myosotis*). Charming little flowers, highly effective if grown in masses. If sown early in sunny border, will bloom the first season. Height 6 to 9 inches.

Alpestris. Mixed colors.

Pkt., 10c; ¼ oz., 20c.

Chinese Forget-Me-Not (*Cynoglossum*). Rich blue.

Pkt., 10c; ¼ oz., 20c.

**FOUR O'CLOCK** (*Marvel of Peru*). Mixed, all colors.

Pkt., 5c; ½ oz., 15c; oz., 25c.

**GAILLARDIA**. Showy and free-blooming; remarkable for the brilliancy, profusion and size of flowers, continuing in bloom all summer. Fine for bedding, borders and cutting.

Grandiflora Hybrids Mixed ..... Pkt., 10c; oz., 60c.

**GILIA capitata** (*Blue Thimble Flower*). Two feet. Beautiful bushy plant of erect habit with fine feathery foliage covered all summer with rich lavender-blue flowers. One inch across, much like Scabiosa. Makes a good cut flower as the blooms last well in water. May also be used as everlasting, as the flowers retain their beautiful color when dried.

Blue and White Mixed ..... Pkt., 10c; oz., 35c.

**GODETIA** (*Satin Flower*). A showy hardy annual that will thrive in partial shade and poor soil and give a profusion of bloom. Brilliant Azalea-like flowers. Choice All Colors, Mixed

Pkt., 10c.

**GYPSOPHILA**. Graceful plants of light fairy-like growth. Much in demand for cutting and combining with other flowers for bouquets and vases.

**Angel's Breath**. This is an improved large-flowering, pure white, of free, easy growth. Several sowings should be made during the season to keep up a supply.

Annual White ..... Pkt., 5c; oz., 25c.

Annual Pink ..... Pkt., 10c.

Paniculata. Perennial ..... Pkt., 10c.

**EVERLASTINGS or STRAWFLOWERS.**

**Helichrysum** (*Strawflower*). Helichrysoms are an ornament to the garden when growing, and are everywhere prized for the winter decoration of vases, and for durable bouquets. Flowers intended for drying should be gathered when partially unfolded and suspended with their heads downward in a cool place. Mixed.

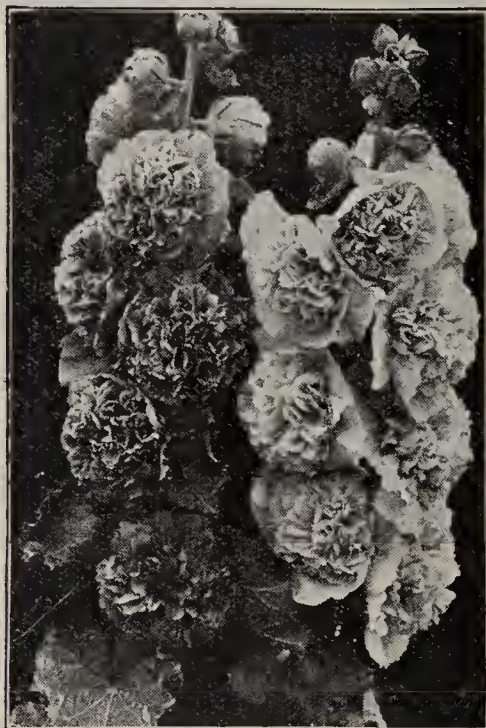
Pkt., 5c; oz., 30c.

Acroclinium. Mixed. Pkt., 10c; ¼ oz., 25c.

Globe Amaranth. Mixed. Pkt., 5c; oz., 25c.

Mixed Everlastings. All colors.

Pkt., 5c; oz., 40c.



*Double Hollyhocks.*



*Helichrysum.*



*Lupinus.*



*Godetia.*

**KOCHIA**, *Trichophylla* (*Burning Bush*).

A quick-growing, cypress-like annual of pyramidal form attaining a height of 3 feet. Its light green foliage turns to a bright scarlet in the fall.

Pkt., 5c.

**LOBELIA erinus compacta**. This charming class forms compact little bushes about 6 inches high and are fairly sheeted with bloom throughout the season. Highly

desirable for edgings, ribbon bedding and garden decoration as well as for pot culture. Pkt., 10c.

**Bedding Queen**. Dwarfest, best for ribbon bedding. Flowers deep purplish violet, with clear white eye. Pkt., 10c.

**HOLLYHOCK**. In long rows against shrubbery as a background for smaller plants and in clumps, hollyhocks give a striking effect. Hardy, blooming year after year, young plants giving the best flowers. Sow in April or May. Double, ranging from white to almost black. Single Mixed, pkt., 5c. Double Mixed, pkt., 10c.

**LUPINUS**. Attractive in the garden but most desirable for cut flowers. Easily and quickly grown in rather poor soil. Do not transplant. Water well during hot weather. Mixed ..... Pkt., 5c; oz., 25c.



*Gypsophila Paniculata.*





Phlox.

**MIGNONETTE.** Plant the seed in boxes and thin out to make strong plants. Beginning in March, sow at intervals, outside for a succession; in late summer sow in pots or boxes for winter blooming. Fall sowings bloom early the next spring. Prefers a cool location. Plant where they are to grow and thin out to stand six inches apart. Hardy annual. 1 foot high.

Sweet. The common variety. Pkt., 10c; oz., 30c.

Machet. Very choice large flowered type. Pkt., 10c; oz., 50c.

**NEMESIA.** A very pretty annual, does best in a cool position. 1 foot high. Orchid-like flowers including rose, yellow, blue, orange, etc.

Suttoni grandiflora. Large-flowering hybrids. Mixed. Special pkt., 15c; 2 pkts., 25c.

**NIGELLA, Damascena (Love-in-a-Mist).** A beautiful hardy annual of bushy, compact habit, producing lovely blue and white flowers. Grows about 1 foot high. Mixed Colors . . . Pkt., 10c.

**MARIGOLD (Tagetes).** In late summer when many bedding plants are past their prime, Marigolds afford an invaluable wealth of color. The African varieties produce large self-colored blossoms on tall plants; the French are smaller, but the colors and markings are very interesting.

**FRENCH VARIETIES**

Gold Star. Very compact; flowers large, golden yellow.

Pkt., 10c; ¼ oz., 25c; oz., 75c.

Legion of Honor. Golden yellow; plants very compact.

Pkt., 10c; ¼ oz., 25c; oz., 75c.

Signata Pumila. Extra dwarf golden yellow for edging.

Pkt., 10c; ¼ oz., 30c.

Dwarf French Mixed. All colors. 1 ft.

Pkt., 5c; ¼ oz., 20c; oz., 50c.

**AFRICAN VARIETIES**

Tall growing, from 2½ to 3 feet high.

Lemon Queen. Soft lemon-yellow.

Pkt., 10c; ¼ oz., 30c; oz., \$1.00.

Prince of Orange. Extra double. Large, golden orange, showy. Pkt. 10c, ¼ oz., 30c; oz., 75c.

Large African. Tall double mixed . . . . . Pkt., 5c; ¼ oz., 20c; oz., 50c.

Guinea Gold. African double. See inside front cover.

**NASTURTIUM.** Few plants are more easily grown or remain longer in bloom than the Tropaeolum with its large shield-shaped leaves and beautifully irregular flowers having long spurs and brilliantly colored petals. In favorable soil, flowers are produced in abundance throughout the season. Much used for window boxes. If the black aphid appears, spray the foliage vigorously with water.

Tall Mixture . . . . . Pkt., 5c; oz., 15c; ¼ lb., 40c; lb., \$1.25, postpaid

Dwarf Mixture . . . . . Pkt., 5c; oz., 15c; ¼ lb., 40c; lb., \$1.25, postpaid

Bodger's Double Golden Gleam. See inside front cover.

**PANSY.** These are so easily grown and flower so freely that they are used by all. Can be sown early in the spring or in September. Plants from the later sowing live over and flower early in the spring. They require rich soil and quantities of water to do their best.

Archias' Giant Florists' Mixture. Fancy strain; all colors.

Pkt., 15c; ⅛ oz., 75c; ¼ oz., \$1.25; oz., \$4.50.

Liberty Park Mixed. Many standard varieties.

Pkt., 10c; ¼ oz., 50c; ½ oz., 85c; oz., \$1.50.

**PETUNIA.** There is no bedding plant of easier culture than the Petunia, and few that make a gayer appearance when in full bloom.

Blotched and Striped Single Mixed. Pkt., 10c; oz., \$1.00.

Fluffy Ruffles Mixed. Selected and hybridized with the greatest care; flowers of large size, beautifully fringed and embracing a splendid variety of colors in many beautiful combinations.

Pkt., 25c; 2 pkts., 45c.



Nasturtium.

Fine Mixed Single Bedding. A splendid bedding mixture of good bloomers. Pkt., 5c; ¼ oz., 25c.

Elks' Pride. A splendid velvety purple, large flowering variety. Pkt., 20c; 2 pkts., 35c.

Rose of Heaven (Improved Rosy Morn). Dwarf, bushy plants, bearing in great profusion brilliant rose colored flowers with a white throat; excellent for pot culture.

Pkt., 10c; 3 pkts., 25c; ⅛ oz., 35c.

**PHLOX DRUMMONDI.** One of the prettiest and most popular of garden annuals. Makes very attractive beds and continues to bloom throughout the summer. Sow in April in open ground or can be started earlier indoors.

Grandiflora. Choice mixed. Pkt., 10c; ¼ oz., 30c.

Dwarf Nana Compacta Mixed. Valuable for low beds, edgings and pot culture. Pkt., 10c; ¼ oz., 30c.

**PORTULACA.** Low growing or creeping tender annual, 6 to 8 inches high, and bearing glossy, cup-shaped blossoms in very brilliant and gorgeous colors. The seed germinates slowly and should be started under glass or when the weather is hot.

Double Mixed. Extra large flowering. From 50 to 60 per cent of the flowers will come double. Pkt., 10c; ⅛ oz., 35c.

Single Mixed. An extra fine strain with very large blossoms and splendid colors. Pkt., 10c; ¼ oz., 20c; oz., 50c.



Double African Marigold.



Portulaca.



Pansy.





*Salpiglossis.*

**POPPY.** Hardly any class of plants affords the same brilliant colorings and showy display. They are of easy culture, seed being sown where they are to remain. Thin the plants 6 to 12 inches apart.

**American Legion.** Single annual. This new single Poppy of the Shirley type is a dazzling orange-scarlet of immense size, borne on long, stout stems. Pkt., 10c; 3 pkts., 25c; oz., 75c.

**Archias' Peony-Flowered.** Double mixed. Pkt., 5c; ½ oz., 25c.

**Shirley.** Colors from purest white, rose, pink, carmine and crimson. Very interesting.

Pkt., 5c; ¼ oz., 15c; oz., 40c.

**Archias' Special Mixture Annual Varieties.**

Pkt., 5c; ¼ oz., 15c.

## ORIENTAL POPPIES

These are always popular in any perennial bed. The seeds should be sown in early spring in the open ground.

**Orientele.** Extra large orange flowers; deep scarlet. Pkt., 10c; ⅛ oz., 20c.

**Oriental Hybrids Mixed.**

Pkt., 10c; ⅛ oz., 25c.

**PYRETHRUM roseum (Painted Daisy).** A showy plant bearing a profusion of large, Daisy-like flowers in lovely shades of rose, pink, red and white. Blooms during May and June and grows 2 feet tall. Mixed. Pkt., 10c; ⅛ oz., 40c.



*Shirley Poppies.*

**PHYSOSTEGIA (American Heather or Obedient Plant).**

**Virginica gigantea.** Bears a profusion of showy lilac-pink flower spikes from June till September. 3 feet tall.

Pkt., 10c; ⅛ oz., 40c.

**RUDBECKIA, Bicolor Superba (Coneflower).** Produces an abundance of bright yellow flowers with brown central disc; fine for cutting. Pkt., 10c.

**SALPIGLOSSIS (Velvet Flower).** A lovely annual blooming in profusion from midsummer until frost. Flowers have the most brilliant colorings.

**Large Flowering Mixed.**

Pkt., 10c.

**STATICE (Sea Lavender).** Extremely showy flowers, borne in attractive clusters. They are cut and dried like Everlastings. Free bloomers and fine for cutting or winter bouquets. 1 to 2 feet.

Pkt., 10c.



*Stocks.*

**Aureum (Golden Feather).** An excellent border plant with rich yellow foliage and small, pure white flowers.

Pkt., 10c; ⅛ oz., 25c; ¼ oz., 45c.

**STOCKS, Dwarf German (Ten Weeks).** Desirable for bedding or pot culture. They bear an immense quantity of fragrant blooms, each plant forming a perfect bouquet and are splendid for cutting.

**Single Mixed** Pkt., 10c; oz., \$1.25.

**SUNFLOWER (Helianthus).** These stately old-fashioned flowers with the newer improved varieties are coming into special favor as a background for lawns and in front of high fences.

**Double California** Pkt., 10c; oz., 60c.

**Cut-and-Come-Again.** Small yellow flower with black center. Pkt., 5c.

**SWEET WILLIAM.** A beautiful class of hardy free-blooming plants of extreme richness and diversity of colors. Produces a fine effect in beds or mixed flower borders.

**Single Mixed** Pkt., 10c; oz., 60c.

**Double Mixed** Pkt., 10c; oz., 75c.



*Sweet William.*



*Statice.*



*Pyrethrum.*

**SALVIA splendens (Scarlet Sage).** A well known favorite bedding plant which bears magnificent spikes of scarlet flowers from July to October. Pkt., 10c; ⅛ oz., 35c.

**Bonfire (Fireball).** New. Best scarlet. 18 to 20 inches.

Pkt., 10c; ⅛ oz., 50c.





Scabiosa.

**SCABIOSA** (*Mourning Bride*). Have perfectly double flowers, are useful for cutting and they are gracefully borne upon long tender stems well above the foliage, and make a beautiful cut-flower. Height 2 feet.

Isaac House Hybrids. Flowers 2½ inches across, on long stems and most beautiful colors. Pkt., 25c.  
Tall Mixed ..... Pkt., 10c; ¼ oz., 25c.

**SCHIZANTHUS** (*Butterfly Flower*). Beautifully marked blooms, resembling butterflies, grown on compact bushes 2 feet high. Sow outdoors in April. Large Flowering Mixed ..... Pkt., 10c.

**THUNBERGIA** (*Black-Eyed Susan*). Rapid growing annual climbers, making a pretty vine for trellises, fences, rockwork, etc. Also for window boxes, hanging baskets and vases. Mixed ..... Pkt., 10c; ¼ oz., 25c.



Vinca Rosea.

**VIOLA odorata** (*Sweet Scented Violet*). Large flowered. Very fragrant, hardy perennial. Blue. Pkt., 10c.

**VINCA Rosea** (*Periwinkle*) ..... Pkt., 10c; ¼ oz., 30c.



Schizanthus.

**VERBENA**. These well-known flowers are splendid for beds or massing. The flowers are of the most brilliant colors, blooming from early summer till late in the fall. Verbenas grown from seed are always thrifty and do not rust.

Archias' New Mammoth Mixed. Pkt., 10c; ¼ oz., 35c; oz., \$1.00.

Hybrida atropurpurea. Giant purple. Pkt., 15c.

Hybrida luminosa. Giant flame-pink. Pkt., 15c.



## NEW DAHLIA-FLOWERED ZINNIAS

Bodger's Prize Winning Strains

Flowers of mammoth size and in form like a perfect decorative dahlia. They are just as easy to grow as the Mammoth Zinnias, and the large flowers with their beautiful range of colors are simply indescribable.

Gold Medal Mixture ..... Pkt., 10c; 3 pkts., 25c, postpaid.

### New Giants of California Zinnias

This is the largest flowering of all Zinnias, growing 3 to 4 feet tall. The flowers differ from the Giant Mammoth type in having smaller flat centers and more loosely placed petals.

Lemon Queen. Canary-yellow. Scarlet Gem. Pure scarlet.

Purity. Pure white flowers. Enchantress. Rose-pink.

Orange King. Glistening orange. Miss Willmott. Soft pink.

Rose Queen. Bright rose.

Any of the above: Pkt., 10c; 1/16 oz., 25c; ½ oz., 40c.

Mixed. This is a complete mixture of all the colors in this type.

Pkt., 10c; 1/16 oz., 20c; ½ oz., 35c.

### Lilliput Zinnias

A beautiful border plant, 18 inches tall, with small, double, symmetrical flowers.

Golden Gem

Salmon-Rose

Canary-Yellow

White Gem

Scarlet Gem

Any of the above: Pkt., 10c; ¼ oz., 45c; ½ oz., 75c.

Double Lilliput Mixed. Contains all colors.

Pkt., 10c; ¼ oz., 30c; ½ oz., 50c.



## Sweet Peas

(Orchid Type)

Price, Named Sorts: Pkt., 10c; oz., 25c;  
¼ lb., 75c; lb., \$2.50.

- Mrs. Tom Jones. A real azure-blue; beautifully waved and of great substance.
- Royal Scot. A true orange-cerise-scarlet.
- Hawlmart Pink. Rich, bright rose-pink, deeply flushed and shaded salmon.
- Archias' White King. Pure white.
- Queen Victoria. Cream-white, mottled rich orange-salmon.
- Florence Nightingale. Largest lavender Spencer yet introduced.
- Bridesmaid. Pleasing rich salmon-pink.
- Hercules. A magnificent soft rose-pink.
- King Edward Spencer. Standard and wings deep rosy carmine-scarlet, reverse of wings deep rosy carmine.
- Special Offer. One packet of each of the above 9 wonderful orchid-flowering Sweet peas for only 50c.
- Spencer Mixed.

Pkt., 10c; oz., 15c; ¼ lb., 50c.

### HARDY OR EVERLASTING PEAS

Climbers growing 6 to 8 feet. Flowers red, white and flesh colored. The roots penetrate the ground to a great depth and survive our winters.

Mixed Colors. Pkt., 10c; ½ oz. 15c; oz., 25c.

## Caladium Esculentum

(Elephant's Ear)

Very showy ornamentals, producing a subtropical effect. Usually planted in groups and quite often used as a border around bronze-leaved cannas. The foliage is very large, sometimes 2 feet across. Bulbs may be started in pots and planted out during May and June. Plant about 15 inches apart. 3 to 4 feet.

Mammoth Bulbs. 30c each; \$3.00 per doz.

Large Bulbs. 20c each; \$2.00 per doz.

Medium Size Bulbs. 10c each; \$1.00 per doz.

## The 7 Best Gladioli

Archias' New Prize Winning Sorts  
All Prepaid.

- America. Beautiful flesh-pink, tinged lavender. Old favorite.  
30c per doz.; \$2.00 per 100.
- Anna Eberius. Dark velvety purple, very dark throat.  
40c per doz.; \$3.00 per 100.
- Golden Measure. Large, thick flowers with heavy stems. Orange-yellow with gold blotch on lower petal.  
40c per doz.; \$3.00 per 100.
- Los Angeles. Shrimp-pink with orange-carmine throat.  
30c per doz.; \$2.00 per 100.
- Mrs. Leon Douglas. Flowers of enormous size on very long stems. Begonia-rose color with flame-scarlet stripes.  
35c per doz.; \$2.50 per 100.
- Albania. Glistening pure white, without throat markings—clearest and finest white yet produced. 35c per doz.; \$2.50 per 100.
- Virginia. Iridescent color shifting from shining scarlet to raspberry-red. Fine long spikes.  
30c per doz.; \$2.00 per 100.
- Archias' Rainbow Mixture. A superb mixture of the standard type of Gladiolus composed of strictly first sized bulbs. A great variety of shades and colors are included, many of the newer varieties. They will please you.  
Doz., 35c; 25 for 60c; 100 for \$1.75, prepaid.

### SPECIAL OFFER

1 bulb of each ( 7 bulbs), prepaid for .....	\$0.25
6 bulbs of each (42 bulbs), prepaid for .....	1.35
12 bulbs of each (84 bulbs), prepaid for .....	2.50



Archias' White King.

### MADEIRA VINE

Of rapid growth, with dense and beautiful foliage, twining to a great height. It grows anywhere, but does better in a warm, sunny, sheltered location. Strong tubers, 5c each; 6 for 25c; 45c per doz., postpaid.



America.



Caladium.

## Angel's Lily

(Ismene Calathina)

Summer and winter flowering. Produces giant amaryllis-like pure white fragrant blossoms. Can be taken up in fall, and, after a few weeks' rest, potted for winter blooms or kept over for planting another season. 35c each; 3 for \$1.00; 12 for \$3.50. Largest size 48c each, postpaid.

## Calla Lily

(Calla Aethiopica)

Large, beautiful, pure white flowers, easy culture. 25c each; 45c per two, postpaid. Larger bulbs, 40c each; \$1.00 per three, postpaid.

New Yellow Calla (Mrs. Roosevelt). Flowers light clear yellow, foliage blotched white. 40c each; \$1.00 per three, postpaid.



Mrs. Frank Pendleton.



## Orchid-Flowering Cannas

Price, Your Choice: 10c each; 3 for 25c; 75c per doz.; 25 for \$1.35, postpaid.

The Canna is one of our best bedding bulbs, being very simple to grow, and rewarding us with its large, ornamental, green and bronze leaves. Lovely shades of orchid-like flowers. We have listed only the best varieties.

**Hungaria.** Color purest La France-pink with satin sheen. The most delicate pink in Cannas. 3½ feet.

**King Humbert.** Bronze foliage. A king among cannas, because of its majestic growth; the plants are crowned with immense heads of coppery scarlet flowers. 4½ feet.

**The President.** Green foliage. 4 feet. This Canna is superior to any other red variety in quality and also quantity of bloom. Color rich glowing scarlet and the immense firm flowers are produced on strong, erect stalks.

**Yellow King Humbert.** Green foliage. 4 feet. This is a sport of the well known bronzed-leaved variety but this sort has green foliage; about 4 feet high, with masses of golden yellow flowers, dotted red.

### 18 Named Iris for \$1.00

Our selection, all named varieties, prolific bloomers, good assortment of attractive colors.

7 for 50c.

18 for \$1.00.

100 for \$5.00.

## Six Gorgeous Decorative Dahlias For \$1.00

**Jean Kerr.** The most valuable white Dahlia with lovely medium size blooms carried on long stems. Blooms early and continuously.

**Mina Burple.** Producing flowers of gigantic size and remarkable beauty; brilliant scarlet. Flowers are decorative type.

**Pride of California.** Immense brilliant cardinal. Excellent cut flowers. Keeps well.

**Sylvia.** Flowers 4 to 6 inches; color white shaded soft pink; a good one.

**Yellow Duke.** Decorative. Canary-yellow, quilled petals; giant flowers.

**Miss Minnie McCullough.** Color soft yellow, overlaid with bronze.

Price of above, 20c each; 6 for \$1.00; 12 for \$1.85, postpaid.

## Five Best Decorative Dahlias

1 each (value \$3.00), for . . . . . \$2.25

3 each (value \$9.00), for . . . . . 6.00

**Jane Cowl (I.D.).** A striking Dahlia presenting a blend of bronze, buff and brilliant gold. Massive, well shaped, and huge. 75c each.

**Jersey's Beauty.** This is certainly a beauty and should be in every garden on account of its wonderful color and stem—a beautiful pink. 45c each.

**Mrs. I. de Ver Warner.** The queen of the garden—a most charming color of deep mauve-pink. True type and very fine form on wonderful stem. 45c each.

**Sagamore.** Bright amber-gold, with just a ray of warm salmon-rose and orange-buff. It is one of those lovely autumn shades. 75c each.

**Margaret Woodrow Wilson.** An exhibition variety of immense size and wondrous beauty. Color an opalescent pink, face of petals creamy white with a phlox-pink reverse. 60c each.



Dahlia.



King Humbert Canna.

**Mixed Double Dahlias.** Over 100 choice and valuable sorts, including many of last year's novelties in mixture and unnamed.

10c each; 6 for 50c; doz., 90c, postpaid. By express, at purchaser's expense, doz., 75c; 100 for \$5.00.

## Archias' Hardy Lilies

The Queen of Flowers

**Phillipinense formosanum (New Hardy Easter Lily).** 35c each; \$3.50 per doz.

**Speciosum rubrum.** White shaded deep rose and spotted red. Extra large bulbs. 35c each; \$3.50 per doz.

**Candidum (St. Joseph's or Annunciation Lily).** 35c each; \$3.00 per doz.

**White Day Lily (Funkia).** Beautiful white flowers, blooms in clusters. 35c each; \$1.00 per 3, postpaid.

**Yellow Day Lily (Hemerocallis flava or Lemon Lily).** Very bright, pleasing color. 20c each; 50c per 3; \$1.60 per doz.

**Regal.** A grand new Lily from China. White with yellow center. 3 to 4 feet high; very fragrant flower; perfectly hardy. 25c each; 6 for \$1.00.

### SPECIAL OFFER

One each of the six elegant Japan and other hardy Lilies listed above, including the Day Lily and the Regal Lily, for only \$1.75, postpaid.

## PEONY BARGAIN

5 Named Peonies, one of each, all popular sorts, for \$1.12

Special for Fall Delivery Only

**Festiva Maxima.** Pure white, carmine spots.

**Mons. Jules Elie.** Glossy lilac-pink.

**Edulis Superba.** Rose-pink; large.

**Felix Crousse.** Rich red; rose shape.

**Madam Bucquet.** Velvety crimson.

All strong, 3- to 5-eye roots, your selection: 5 for \$1.12; 10 for \$2.00.



**SEEDS of VINES and CLIMBERS**

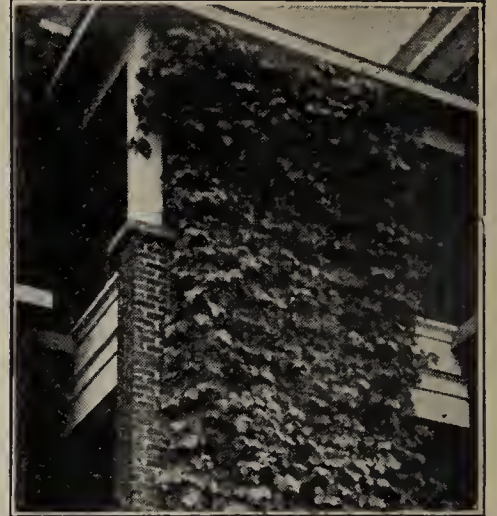


*Morning Glory, Japanese.*

With their variance in color, their beauty of foliage and blossom, their grace wherever used, these vines frequently provide the finishing touches to any planting. Some adhere to the masonry, some must be trained through lattice or trellis and others with their tendrils will cling tenaciously, unshaken by wind or weather. Visualize the effect desired and train them accordingly to cover your walls and pilasters, your lattice or trellis, the pergola or laundry posts, the porch or portico, veranda or on the fence for shade, grace or flower and let them ramble in their plenitude—objects of beauty and of pleasure to the planter.

**BALSAM APPLE.** An excellent climber bearing cream-colored flowers followed by yellow apple-shaped fruit, which when ripe, opens, showing blood-red inside. A splendid climber. Pkt., 10c; oz., 35c.

**SCARLET RUNNER BEAN.** A rapid climber, flowering profusely; grows 10 to 15 feet high. Pkt., 10c; ¼ lb., 15c; lb., 40c; 2 lbs., 75c.



*Kudzu Vine.*

**BALLOON VINE** (*Cardiospermum halicababum*). A favorite with children, being remarkable for its inflated membranous capsules containing the seed. It is sometimes called "Love-in-a-Puff." A rapid and graceful climber. Flowers small, white. The round black seed is marked with a white heart-shaped spot. Sow seed outdoors in open ground early in spring and give the plant some support to run upon. Tender annual; six feet high.

Pkt., 10c; oz., 25c.

**CANARY BIRD VINE.** A dainty vine with beautiful cut leaves and pretty, delicate flowers of a clear canary-yellow. From the color of its blossoms and also from a fancied resemblance of their shape to a bird with wings extended, the plant obtained its common name. Does well in the shade.

Pkt., 10c.



*Moonflower.*

**CYPRESS VINE.** A splendid climber, with dark green, feathery foliage and an abundance of bright, star-shaped white and scarlet blossoms. Sow thickly after the middle of April. Height 15 feet.

Pkt., 10c; oz., 45c.

**CLEMATIS (White).** As beautiful and satisfactory as any vine you may plant. Sure to attract attention wherever grown. The star-shaped white blooms are produced with the greatest freedom from July until October. The plants make a vigorous growth and are suited for porches, arches, and wells.

Pkt., 10c.

**HYACINTH BEAN.** Tender, ornamental climber.

Purple Sudan. Pkt., 5c; oz., 20c.

Princess Helen. White. Pkt., 5c; oz., 20c.

Mixed. Pkt., 5c; oz., 20c.

**GOURDS.**

Hercules Club. Grows 6 feet long. Pkt., 5c.

Sugar Trough. Often used for buckets. Pkt., 5c.

Dish Cloth or Chinese Sponge (*Luffa*). Pkt., 10c.

Japanese Nest Egg. White, egglike fruits. Pkt., 5c.

Dipper Gourd. Used for dippers. Pkt., 5c.

**MOONFLOWERS OR EVENING GLORY.** A beautiful rapid climber, having large flowers from 4 to 6 inches in diameter, that open in the evening.

Giant White. Pkt., 10c.

Giant Pink. Pkt., 10c.

Heavenly Blue. Flowers 4 to 5 inches across; color sky-blue. Pkt., 10c.

Special Offer. One packet each of the above three grand Moonflowers, for 25c.

**IMPERIAL JAPANESE MORNING GLORY.** These grand New Morning Glories from Japan are remarkable for their large size and exquisite colors.

Pkt., 5c; oz., 35c.

For Plants of Hardy Climbing Vines See Page 26.

**CARDINAL CLIMBER.** This is a very attractive, strong and rapid grower, attaining a height of 25 feet, with beautiful fern-like lacinated foliage and literally covered with a blaze of fiery cardinal-red flowers from midsummer till frost. The flowers are about 1 inch in diameter and are borne in clusters of 5 to 7 blooms each. Like all Ipomoeas it delights in a warm, sunny situation and good, rich soil. The seed should be soaked in water a few hours before sowing and not planted outside until about May 1st.

Pkt., 10c; ¼ oz., 20c.

**KUDZU VINE** (*Pueraria Thunbergiana*). A large leaved, rapid growing hardy climber bearing rosy purple, pea-shaped flowers in August. Will attain a height of over 25 feet after the first season.

Pkt., 10c; oz., 50c.

**WISTERIA CHINENSIS.** One of the most beautiful and rapid growing of the hardy perennial climbers. When well established in good soil it will often grow fifteen to twenty feet during the season and frequently blooms both in spring and fall. The flowers are very fragrant, single, pale blue, pea-shaped and are borne in long drooping grape-like clusters, often over a foot in length. Foliage light green, pinnate. The seed should be sown in mellow loam early in the spring, or in greenhouse or hotbed in winter and when plants are one foot high transplanted into permanent situations. Pkt., 15c.



*Clematis—White.*



*Wisteria.*



# Archias' Superior Garden Seeds

Grow Your Own Vegetables  
Archias "Sure Seeds" are  
Always Reliable



## Giant Washington Rust-Proof Asparagus

\$400.00 to \$600.00  
Per Acre Growing this  
New Rust Resistant Variety.  
Absolutely the best Aspara-  
gus ever grown.  
Pkt., 10c; oz., 15c;  
¼ lb., 35c; lb., \$1.00, postpaid.

**BARR'S MAMMOTH WHITE.**  
Pkt., 5c; oz., 10c; ¼ lb., 25c; lb., 65c, postpaid.

## Superior Beet Seed

Culture. Beets should be planted on a deep, rich, sandy loam, sowing in rows 18 inches apart, covering about one-half inch deep, pressing the soil firmly over the seed. When plants are well established, thin to 4 to 6 inches in the row. About 60 days in maturing, according to variety. One ounce to 50 feet of row; 6 to 8 lbs. to an acre.

**ALL GARDEN SEEDS POSTPAID.**

**ARCHIAS' CRIMSON GLOBE BEET.** *The Money Maker for Market Gardeners.* Smooth skinned, slightly oblong, deep crimson color, and of the very finest quality.

Pkt., 5c; oz., 10c; ¼ lb., 25c; lb., 85c.

**EARLY WONDER.** *A Very Fine Extra Early Market and Table Beet.*

Pkt., 5c; oz., 10c; ¼ lb., 25c; lb., 85c.

**ARCHIAS' IMPROVED BLOOD TURNIP.** Medium early, and when sown late, desirable for winter.

Pkt., 5c; oz., 10c; ¼ lb., 25c; lb., 75c.

**DETROIT DARK RED.** One of the best red turnip-shaped varieties.

Pkt., 5c; oz., 10c; ¼ lb., 25c; lb., 75c.

**CROSBY'S EGYPTIAN.** Improved strain of the Egyptian Beet.

Pkt., 5c; oz., 10c; ¼ lb., 25c; lb., 75c.

**SWISS CHARD or SPINACH BEET,** Ford-hook Giant. Pkt., 5c; oz., 10c; ¼ lb., 25c.



*Crosby's Egyptian Beet.*



*Detroit Dark Red Beets.*

## Mangels or Stock Beets

**FARMERS AND STOCK RAISERS—ATTENTION**

Sow 5 lbs. to the acre, in rows 2½ feet apart.

**ARCHIAS' JUMBO LONG RED MANGEL.** Immense cropper, yielding 1500 bushels to the acre.

Oz., 5c; ¼ lb., 15c; lb., 45c.

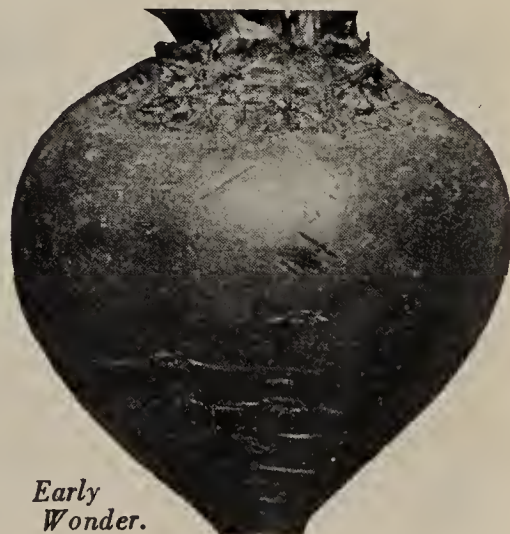
**GOLDEN TANKARD MANGEL WURZEL.** One of the best stock Beets.

Oz., 5c; ¼ lb., 15c; lb., 45c.

**IMPERIAL WHITE SUGAR.** Good for making sugar and stock feeding.

Oz., 10c; ¼ lb., 25c; lb., 75c.

Special prices to parties raising large quantities of Beets for stock.



*Early Wonder.*

## Archias' Surprise Vegetable Collection

Postpaid . . . . . 50c

- 1 Pkt. Beans, Stringless Green Pod Bush
- 1 Pkt. Beans, Kentucky Wonder Pole
- 1 Pkt. Beets, Early Wonder
- 1 Pkt. Cabbage, Early Flat Dutch
- 1 Pkt. Carrot, Oxheart
- 1 Pkt. Cucumber, Davis Perfect
- 1 Pkt. Lettuce, Large Hanson
- 1 Pkt. Mustard, Southern Giant Curled
- 1 Pkt. Okra, White Velvet
- 1 Pkt. Onion, Prizetaker
- 1 Pkt. Peas, Premium Gem
- 1 Pkt. Radish, White Tip
- 1 Pkt. Squash, White Bush
- 1 Pkt. Tomato, Stone
- 1 Pkt. Watermelon, Tom Watson

## Vegetable Plants and Roots

**ALL PRICES POSTPAID.**

**ASPARAGUS ROOTS, Barr's Mammoth.**

2-yr., 25 for 50c; 100 for \$1.25; 500 for \$5.00.

**ASPARAGUS ROOTS, New Washington.**

25 for 65c; 50 for \$1.00; 100 for \$1.50.

**HORSERADISH SETS, Bohemian Giant.**

25 for 25c; 100 for 75c; 1000 for \$6.50.

**RHUBARB ROOTS, Mammoth Victoria.** Large roots.

3 for 25c; 75c per doz., postpaid.

25 for \$1.25; 100 for \$4.75, not prepaid.

**SAGE PLANTS, Holt's Mammoth.** The largest variety grown; plants are strong.

15c each; 2 for 25c; 5 for 50c; \$1.00 per doz.

**CABBAGE PLANTS.** Frost-proof.

45c per 100; \$3.50 per 1000.

**CAULIFLOWER PLANTS, Snowball and Extra Early Erfurt.**

50 for 60c; 100 for \$1.00.

**SWEET POTATO PLANTS.** Potato plants are in season only from May 1st to July 1st.

100 for 45c; 500 for \$2.00; 1000 for \$3.75.

**CELERY PLANTS.** Field-grown and transplanted.

100 for 75c; 1000 for \$6.50.

**PEPPER PLANTS.**

Doz., 20c; 50 for 75c; 100 for \$1.25.

**TOMATO PLANTS.** Transplanted.

Doz., 20c; 50 for 65c; 100 for \$1.00;

1000 for \$9.00.

**CHIVES.** Small plants of the onion family, used for seasoning.

Clumps, 15c each; 2 for 25c; 5 for 60c.

**BERMUDA ONION PLANTS.**

15c per 100; \$1.25 per 1000.



**Archias' Golden Anniversary Collection \$1.00**

30 Packets, Value \$2.20, all for \$1.00.

- Pkt.  
 1 Beet, Early Wonder  
 1 Beans, Pencil Pod Wax  
 1 Beans, Full Measure  
 1 Carrots, Danvers Half Long  
 1 Celery, Giant Pascal  
 1 Cucumber, New Everbearing  
 1 Dill, for pickles  
 1 Endive, White Curled  
 1 Lettuce, New York Market

- Pkt.  
 1 Mustard, Chinese Curled  
 1 Okra, Dwarf Green  
 1 Onion, Southport Red Globe  
 1 Parsley, Moss Curled  
 1 Parsnip, Hollow Crown  
 1 Peas, Archias' Early Surprise  
 1 Pepper, Chinese Giant  
 1 Pumpkin, Japanese Pie  
 1 Radish, Scarlet White Tip

- Pkt.  
 1 Spinach, Long Standing Bloomsdale  
 1 Squash, Early White Bush  
 1 Sweet Corn, Golden Bantam  
 1 Tomato, June Pink  
 1 Tomato, Marglobe  
 1 Turnip, Purple Top Globe  
 6 Flower Seed, Popular Varieties



*Burpee's Stringless Green Pod.*



*Henderson's Bush Lima.*

**Archias' Garden Beans  
Green Podded Bush Beans**

One pound will plant 50 to 100 feet of drill.

If wanted by mail, add 7c for first pound and 1c for every additional pound for postage.

- TENDERGREEN STRINGLESS.** Tender, round, green, stringless. Pkt., 15c; ½ lb., 25c; lb., 45c.  
**BURPEE'S STRINGLESS GREEN POD.** Earliest and absolutely stringless. Pkt., 10c; lb., 25c.  
**IMPROVED RED VALENTINE.** Popular green pod; productive. Pkt., 10c; lb., 25c.  
**BOUNTIFUL.** Pods are flat, absolutely stringless, rich green, very large and handsome. Pkt., 10c; lb., 25c.  
**FULL MEASURE.** Pods 6 to 7 inches long, which are solid, meaty, brittle and stringless. Splendid for home or market use. Pkt., 10c; lb., 25c.  
**ARCHIAS' BOSTON NAVY BEANS.** Wonderfully productive. Pkt., 10c; lb., 15c.

**Archias' Wax Bush Beans**

- ARCHIAS' IMPROVED RUST-PROOF GOLDEN WAX.** Pkt., 10c; lb., 25c.  
**PENCIL POD BLACK WAX.** A popular variety. Pkt., 10c; lb., 25c.

**Archias' Bush Lima Beans**

- BURPEE'S BUSH LIMA.** Grows 10 to 30 inches; handsome large pods. Pkt., 10c; lb., 30c.  
**HENDERSON'S BUSH LIMA.** Produces enormous crops. Pkt., 10c; lb., 25c.  
**JACKSON WONDER.** Ripens early; beans spotted red; very prolific. Pkt., 10c; lb., 25c.



**Pole Lima Beans**

- SMALL WHITE LIMA or SIEVA.** Productive, pods short, beans white. Pkt., 10c; lb., 30c.  
**KING OF THE GARDEN LIMA.** Most productive of the Limas. Pkt., 10c; lb., 30c.  
**FLORIDA SPECKLED POLE BUTTER BEAN.** Immensely productive. \*Similar to Jackson Wonder except it makes a vine. Hardy. Pkt., 10c; lb., 30c.

**Pole and Cornfield Beans**

- One pound will plant 200 hills.  
**ARCHIAS' MISSOURI WONDER.** Originated in Missouri; stringless if picked young. Large pkt., 10c; lb., 30c.  
**KENTUCKY WONDER.** Green pod. Pkt., 10c; lb., 25c.  
**KENTUCKY WONDER WAX.** Pkt., 10c; lb., 30c.  
**CUT SHORT RED SPECKLED.** Good cornfield variety. Pkt., 10c; lb., 30c.  
**CREASEBACK or FAT HORSE.** Pkt., 10c; lb., 30c.  
**WHITE SEEDED KENTUCKY WONDER (Burger's Stringless).** A prolific stringless green pod pole bean. Early, tender and meaty, 8 in. long, borne in clusters. Also an excellent shell bean. Large pkt., 10c; lb., 30c.



*Archias' Golden Wax.*

**Brussels Sprouts**

**LONG ISLAND IMPROVED.** Produces a large crop of sprouts of delicious quality. This variety can be grown under less favorable conditions than others and is superior in quality.

Pkt., 10c; oz., 25c; ¼ lb., \$1.00; lb., \$3.50.



*Brussels Sprouts.*

**Broccoli**

**Culture.** The same as Cauliflower. Succeeds best in deep, rich, moist soil. One ounce will produce 1500 plants.

**ITALIAN GREEN SPROUTING.** Heads compact, good size, and of a greenish color. The most certain to head.

Pkt., 10c; ½ oz., 25c; oz., 45c; ¼ lb., \$1.35.



*Italian Green Sprouting Broccoli.*



# Archias' Sure Cabbage Seed

One ounce will produce about 2000 plants; ¼ lb., seed in bed will produce plants for one acre.

**GOLDEN ACRE, Yellows Resistant.** Similar to Copenhagen Market, but several days earlier. Pkt., 10c; oz., 35c; ¼ lb., \$1.00.

**COPENHAGEN MARKET CABBAGE.** Largest of the early round-headed varieties. Pkt., 5c; oz., 25c; ¼ lb., 75c.

**ARCHIAS' ALL HEAD EARLY CABBAGE.** All head and always sure to head. Pkt., 10c; oz., 20c; ¼ lb., 65c.

**GLORY OF ENKHUIZEN.** Ready for market in 90 days. Pkt., 5c; oz., 20c; ¼ lb., 60c.

**SELECT EARLY JERSEY WAKEFIELD (True American).** Very early. Pkt., 5c; oz., 20c; ¼ lb., 60c.

**CHARLESTON or LARGE WAKEFIELD.** Large, solid heads of good quality. Pkt., 5c; oz., 20c; ¼ lb., 60c.

**EARLY FLAT DUTCH.** Well known standard early. Pkt., 5c; oz., 15c; ¼ lb., 50c.

**ARCHIAS' SELECTED WORLD BEATER.** Best and largest winter Cabbage. Pkt., 10c; oz., 30c; ¼ lb., \$1.00.

**ARCHIAS' SELECTED TRUE ALLSEASONS.** Second early, reliable header. Pkt., 5c; oz., 20c; ¼ lb., 60c.

**ARCHIAS' SELECTED LATE FLAT DUTCH.** Superior strain, grown exclusively for us. Pkt., 5c; oz., 20c; ¼ lb., 60c.

**ARCHIAS' SELECTED SURE HEAD.** A grand and popular Cabbage. Pkt., 5c; oz., 20c; ¼ lb., 60c.

## Chinese Cabbage

**Culture.** For early use sow in hotbed in February or March. When 4 inches high transplant, if the weather is suitable, 1 foot apart in 2½-foot rows. For late or main crops, sow in August or early September.

**WONG BOK.** A comparatively short type with blocky, pear-shaped head. The foliage is medium light yellowish green and the plants are compact and leafy. Heads are 8 to 10 inches tall, tightly folded and are rich creamy white in color. This tender, succulent variety possesses a rich, appetizing flavor.

Pkt., 10c; oz., 25c; 2 ozs., 45c; ¼ lb., 75c.



Golden Self-Blanching Celery.



Chinese Cabbage.

**WHITE PLUME.** Naturally white, requires very little banking to bleach. Pkt., 5c; oz., 20c; ¼ lb., 75c.

**GIANT PASCAL.** A mammoth variety growing in favor. Pkt., 5c; oz., 20c; ¼ lb., 75c.

**CELERY PLANTS.** Field grown and transplanted. 100 for 75c; 1000 for \$6.50, prepaid.



Select Early Jersey Wakefield.



Archias' Late Flat Dutch.

## Collards

**GEORGIA or SOUTHERN.** A variety of Cabbage that does not form a head, but produces a mass of leaves. Very hardy and continuous grower. Sow in drills where the plants are to remain, and thin out to 2 or 3 feet apart in the row when of proper size.

Pkt., 5c; oz., 10c; ¼ lb., 35c; lb., \$1.00.

## Archias' Selected Cauliflower

Cauliflowers delight in a rich, moist soil, and in dry seasons should be abundantly watered, especially when heading. Sow the seed early in the hotbed and transplant the plants 2 to 3 inches apart in boxes or in an-

other hotbed until such time as they are safe to be planted in the open ground, which in this latitude is usually the 10th of April. Set the plants in the field 15x24 inches apart.

**ARCHIAS' SELECT EARLY SNOWBALL.** An extremely early dwarf variety, grown for us by the best Cauliflower specialists in Denmark, producing magnificent white heads of fine quality.

Pkt., 10c; 3 pkts., 25c; ¼ oz., 45c; oz., \$1.25.

**AUTUMN GIANT.** Popular in the south. Giant size, compact and firm. Pkt., 10c; ½ oz., 35c; oz., 65c.

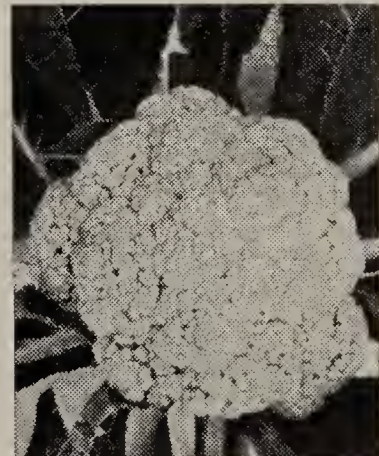
## Celery

One-fourth ounce to 100 feet of row; 4 ounces to the acre.

**Culture.** Celery is slow to germinate and ample time must be given. Sow thinly, cover lightly and keep constantly moist. When seedling plants are three inches high, clip for stocky growth or else transplant.

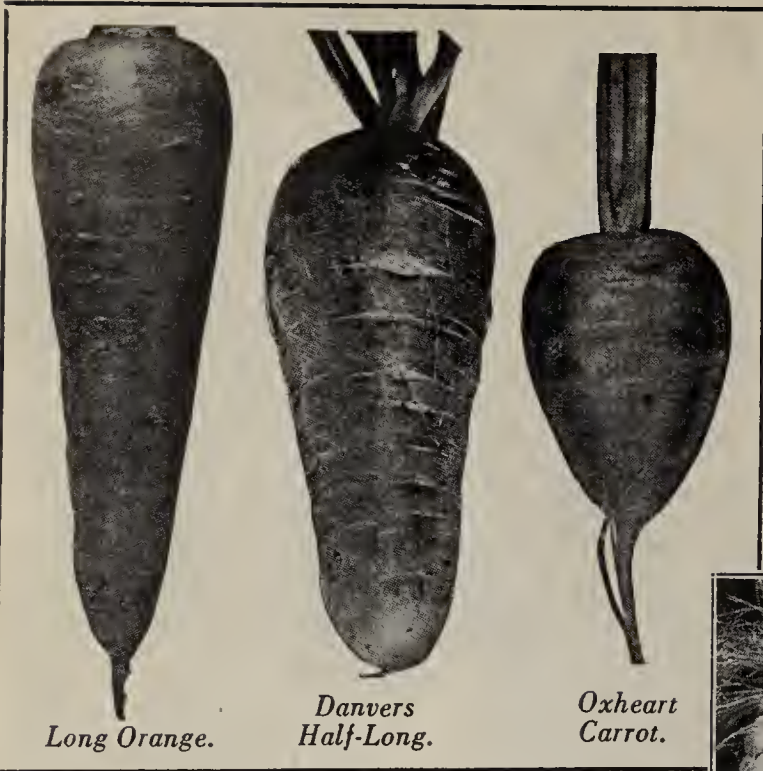
**GOLDEN SELF-BLANCHING.** Perfectly solid, of fine flavor.

Pkt., 5c; oz., 35c; ¼ lb., \$1.25.



Early Snowball Cauliflower.





## Archias' Select Table Carrots

One ounce will sow 100 feet of drill.

**Culture.** The land should be thoroughly manured the previous season. Sow the early sorts in March and April, in drills 1 inch deep and 14 inches apart; thin out to 4 inches. For main crop sow in May or beginning of June. Care should be taken at all times to see that the soil is firm over the seeds, either by means of feet, roller or garden drill. Slug Shot dusted over the ground will prevent maggots.

**RED ST. VALERY.** Rich, deep orange color, large and handsome. Pkt., 5c; oz., 15c; ¼ lb., 35c; lb., \$1.00.

**OXHEART (Stump Rooted).** Bright orange; fine grained and sweet; very productive. Pkt., 5c; oz., 15c; ¼ lb., 35c; lb., \$1.00

**DANVERS HALF-LONG SCARLET.** Smooth and handsome; excellent market variety. Pkt., 5c; oz., 15c; ¼ lb., 35c; lb., \$1.00.

**EARLY SCARLET HORN.** Finest quality for table; forces well. Pkt., 5c; oz., 10c; ¼ lb., 25c; lb., 75c.

**LONG ORANGE.** Large, popular variety for winter use. Pkt., 5c; oz., 15c; ¼ lb., 35c; lb., \$1.00.

**YELLOW BELGIAN.** For stock feed only. Wonderful yielder. Good keeper. Oz., 10c; ¼ lb., 20c; lb., 65c.

## Sweet or Garden Corn

One pound to 100 hills; 15 pounds to the acre.

**Culture.** Plant in hills 18 inches apart with rows 3 feet apart. Three or four seeds may be planted in each hill but not more than two plants allowed to stand. As suckers or excess shoots appear they should be removed, as they take strength from the mother plant.

**GOLDEN GIANT.** Noted for its excellent qualities; much larger than Golden Bantam and more productive. Pkt., 10c; lb., 20c.

**HOWLING MOB.** Pkt., 10c; lb., 20c.

**ADAMS' EARLY.** Popular with gardeners. Pkt., 10c; lb., 15c.

**EARLY MINNESOTA.** Eight rows of quite large sweet grains. Pkt., 10c; lb., 15c.

**GOLDEN BANTAM.** Height 4 feet, bearing two or more ears. Pkt., 10c; lb., 15c.

**COUNTRY GENTLEMAN.** An old time favorite. Pkt., 10c; lb., 20c.

**STOWELL'S EVERGREEN.** Large ears and long, deep kernels. Pkt., 10c; lb., 15c.

**EVERGREEN FODDER CORN.** Excellent for early feed. 10 lbs., \$1.00.

**FIELD CORN.** See Field Seeds, page 24.



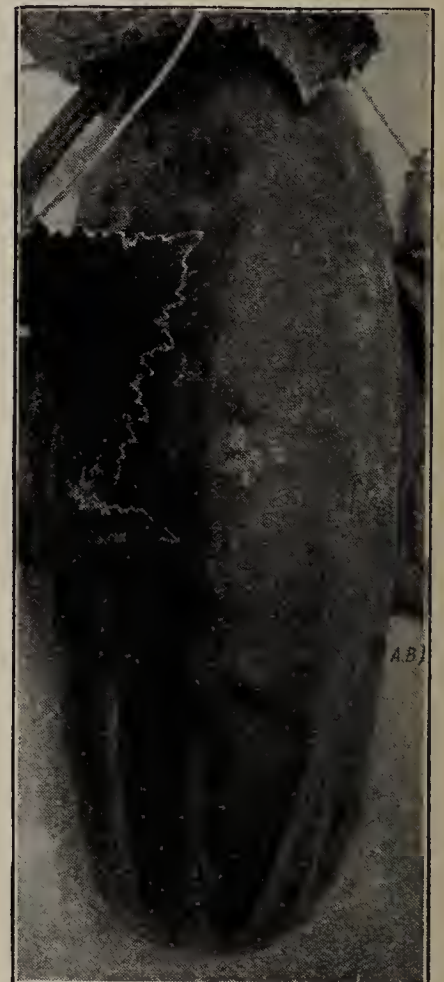
Stowell's Evergreen Sweet Corn.

## Archias' Selected Pop Corn

**ARCHIAS' GOLDEN SEAL.** A new yellow Pop Corn that is ahead of all others. Pkt., 10c; lb., 15c; 5 lbs., 60c, postpaid.

**JAPANESE HULLESS or DWARF RICE.** Very tender and almost hullless. Pkt., 10c; lb., 15c; 5 lbs., 60c, postpaid.

**MUSHROOM or GIANT YELLOW SOUTH AMERICAN.** Largest and best Pop Corn in existence. Pkt., 10c; lb., 15c; 5 lbs., 60c, postpaid.



White Spine.

## Archias' Prolific CUCUMBERS

Carefully Selected Strains, True to Name and Very Best for Table and Pickling.

**Culture.** Do not plant Cucumbers before danger of frost has passed, as the plants are very tender and the least frost will damage them or kill them. Plant in hills or rows 4 feet apart, 10 to 15 seeds to each hill; make soil very rich. For pickles, plant from June first to middle of July.

**ARCHIAS' SELECTED EARLY WHITE SPINE.** Fruit uniformly straight and handsome, dark green. Pkt., 5c; oz., 10c; ¼ lb., 25c; lb., 85c.

**DAVIS' PERFECT CUCUMBER.** A sure money maker for those growing Cucumbers. Pkt., 5c; oz., 10c; ¼ lb., 30c; lb., \$1.00.

**ARCHIAS' NEW EVERBEARING.** Very early, enormously productive. Pkt., 5c; oz., 10c; ¼ lb., 30c; lb., \$1.00.

Archias' Improved Extra Long Green.

**GHERKIN or BURR.** Oval-shaped, prickly; for pickling only. Pkt., 10c; ¼ lb., 50c.

**IMPROVED EXTRA LONG GREEN.** Grows very long, very productive. Excellent for pickles. Pkt., 5c; oz., 10c; ¼ lb., 30c; lb., \$1.00.

**NEW JAPANESE CLIMBING CUCUMBER.** Grown on trellises, fences, etc., saving valuable space. Pkt., 5c; oz., 10c; ¼ lb., 30c; lb., \$1.00.





## ARCHIAS' EGGPLANT SEED

One ounce of seed for 2000 plants; 8 ounces for an acre.

**Culture.** A very delicious vegetable that gives decided change in diet. Sow seed in hotbeds early in the spring and transplant to the open after all danger of frost is over. Transplant 2 feet apart each way and cultivate frequently.

**BLACK BEAUTY.** This is a very early, large Eggplant, usually maturing in about 120 days. The fruit is jet black, the average weight being about 2 to 3 pounds; very dwarf in growing habit, bearing its fruit close to the main stem; excellent for truckers.

Pkt., 10c; oz., 45c; ¼ lb., \$1.25, postpaid.

**NEW YORK IMPROVED SPINELESS.** This type is very early and entirely spineless, bearing extra large fruits of a deep purple color; very smooth with white, delicious flesh.

Pkt., 10c; oz., 45c; ¼ lb., \$1.25, postpaid.

## ENDIVE

One ounce will sow about 200 feet of drill.

**GREEN CURLED.** Crisp, dark green leaves; the hardiest. Pkt., 5c; oz., 10c; ¼ lb., 35c.

**WHITE CURLED.** Leaves pale green. Pkt., 5c; oz., 10c; ¼ lb., 35c.

## HERBS

Every kitchen garden should have a few herbs. They are easily grown and are always pleasant and desirable for flavoring, perfuming and medical purposes. Varieties marked with (\*) are perennial.

**BASIL** ..... Pkt., 10c; oz., 20c.

**\*CARAWAY** ..... Pkt., 10c; oz., 15c.

**DILL** ..... Pkt., 10c; oz., 15c.

**\*THYME** ..... Pkt., 10c; oz., 20c.

**\*SAGE** ..... Pkt., 10c; oz., 35c.

**TAME LAMBSQUARTER.** Excellent for greens.

Large pkt., 10c; 3 pkts., 25c.

## Kohl-rabi

Kohl-rabi is grown for its turnip-shaped bulb, which is formed above ground. The bulbs should be used while young and tender. Set plants 8 inches apart.

**EARLIEST WHITE VIENNA.** Greenish white outside, with clear white flesh within. Smooth, short leaf; good for forcing; fine quality. Pkt., 5c; oz., 15c; ¼ lb., 45c.

**EARLIEST PURPLE VIENNA.** Same in every respect as earliest White Vienna, except in the outside color. Pkt., 5c; oz., 15c; ¼ lb., 45c.

## ARCHIAS' LETTUCE SEED

Two ounces will sow 150 feet of drill; 4 to 5 pounds to the acre.

**Culture.** Lettuce seed should be sown very early in the spring and at intervals of 15 days for a succession; sow the seed in shallow drills, being careful to firm the soil over the seed and thin to 4 inches apart in row.

**ARCHIAS' NEW YORK MARKET.** The largest heading Lettuce of all. Produces immense heads 15 to 18 inches across and as solid as cabbage; blanches beautifully; crisp, tender and delicious; absolutely free from bitterness. Pkt., 10c; oz., 20c; ¼ lb., 60c; lb., \$2.00.

**IMPROVED LARGE HANSON.** Heads very solid, beautifully blanched, crisp, mild and tender. Pkt., 5c; oz., 10c; ¼ lb., 35c; lb., \$1.25.

**PRIZE HEAD or SATISFACTION.** Dark reddish brown color; heads large. Pkt., 5c; oz., 10c; ¼ lb., 35c; lb., \$1.25.

**BLACK-SEEDED SIMPSON.** (*Archias' Selected Stock*). Standard for early spring planting and growing under glass. Pkt., 5c; oz., 10c; ¼ lb., 35c; lb., \$1.25.

**ARCHIAS' EXTRA SELECTED BIG BOSTON LETTUCE.** Popular variety for every purpose on the market. Large pkt., 5c; oz., 15c; ¼ lb., 35c; lb., \$1.25.

**ARCHIAS' NEW ICEBERG.** A beautiful Lettuce, worthy of universal cultivation. Pkt., 10c; oz., 20c; ¼ lb., 50c; lb., \$1.60.

**GRAND RAPIDS FORCING.** Especially adapted for greenhouse culture. Pkt., 5c; oz., 10c; ¼ lb., 35c; lb., \$1.10.

**CHICKEN LETTUCE** ..... Oz., 10c; ¼ lb., 25c; lb., 85c.

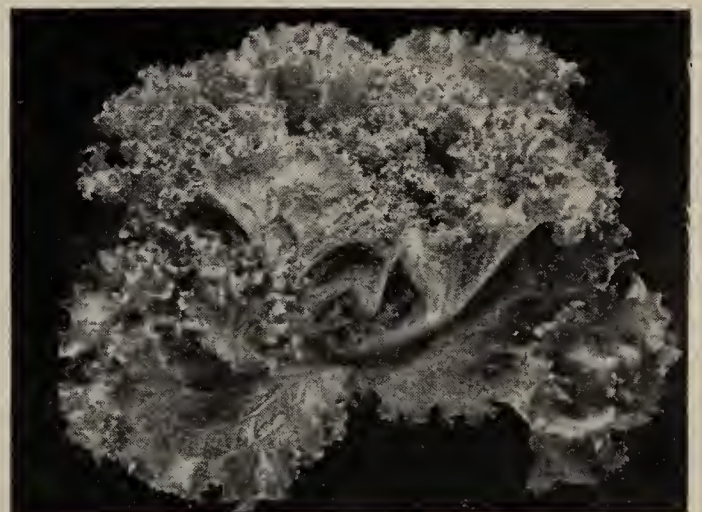
**PARIS WHITE COS** ..... Pkt., 10c; oz., 20c; ¼ lb., 45c.



Black Beauty Eggplant.



Kohl-rabi.



Black Seeded Simpson. (*Archias' Selected Stock*).

## Garden Huckleberry

Larger than common Blueberry. Unexcelled for pies, preserves and, with apples or anything sour, for jelly. Enormous crops of fruit. Pkt., 10c; 3 pkts., 25c.

## Kale or Borecole

**DWARF GREEN.** Sow in autumn for sprouts of green; desirable in every garden. Height 8 inches.

Pkt., 5c; oz., 10c; ¼ lb., 20c; lb., 65c.

**TALL GREEN SCOTCH.**

Pkt., 5c; oz., 10c; ¼ lb., 20c; lb., 65c.

## Leek

**GIANT FLAG.** Similar to onions in flavor, but milder and preferred by many. Excellent for soups, stewed or creamed. Edible parts 6 to 8 inches long, 3 inches in diameter. Pkt., 10c; oz., 15c.

## Mustard

Make repeated sowings in shallow drills a foot apart; of easy cultivation. Cut when not over 3 inches high.

**WHITE.** Best for salad.

Pkt., 5c; oz., 10c; ¼ lb., 20c; lb., 50c.

**BROWN or BLACK.** Stronger than the white.

Pkt., 5c; oz., 10c; ¼ lb., 20c; lb., 50c.

**SOUTHERN GIANT CURLED.** Highly esteemed for salads, leaves very curly.

Pkt., 5c; oz., 10c; ¼ lb., 20c; lb., 65c.

**TENDERGREEN or MUSTARD SPINACH.** Large, thick-leaved variety from Japan, remaining tender both summer and winter. Popular in the South. Pkt., 5c; oz., 10c; ¼ lb., 25c; lb., 65c.

## Mushroom Spawn

**AMERICAN PURE CULTURE SPAWN.** Produced by a new method from virgin spores. Pure Culture Spawn is far superior to spawn that is imported, and when once used no other is wanted. The results show it is by far the cheaper. A brick weighs 1¼ pounds, and is sufficient for a bed 2x4 feet. We receive fresh spawn every few weeks direct from the best makers. Cultural directions free with every order.

1 brick, 35c; 3 bricks, \$1.00, postpaid



## Archias' "Sure" Watermelon Seed

One ounce will plant about 25 hills;  
4 to 5 pounds to an acre.

Culture. Treat same as muskmelons, except that they should be planted 8 to 10 feet apart, according to variety.

**KLECKLEY SWEET** or **MONTE CRISTO**. Oblong in shape, skin dark green, flesh bright red.

Pkt., 5c; oz., 10c; ¼ lb., 25c; lb., 65c.  
**NEW "IRISH GREY."** Yellowish grey. Flesh is very sweet and firm.

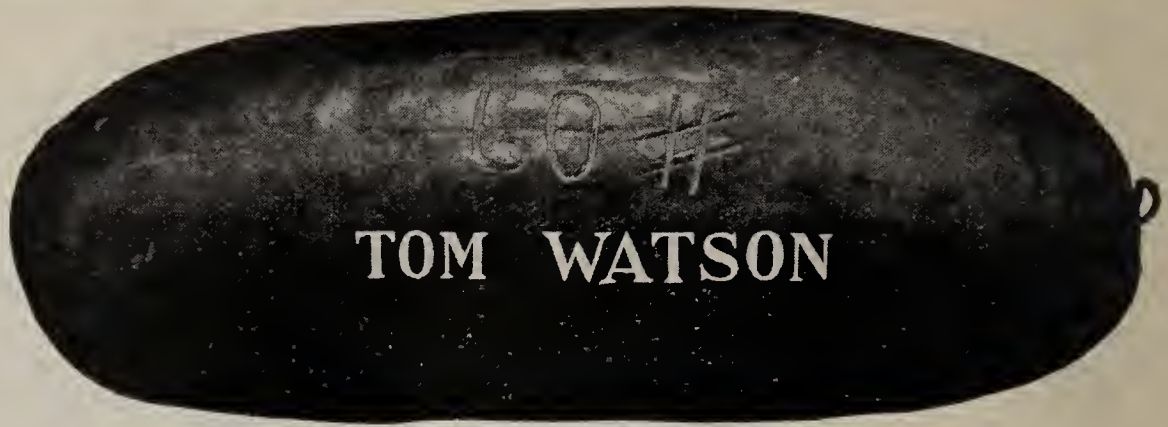
Pkt., 5c; oz., 10c; ¼ lb., 25c; lb., 75c.  
**NEW STONE MOUNTAIN** or **DIXIE BELLE WATERMELON**. *The Greatest Watermelon in existence.*

Pkt., 5c; oz., 10c; ¼ lb., 25c; lb., 75c.  
**PORTO RICAN (IMPROVED GOLDEN HONEY)**. *Sweet as Honey; Color of Gold.*

Pkt., 10c; oz., 20c; ¼ lb., 45c; lb., \$1.50.  
**HALBERT HONEY**. One of the finest Watermelons for the home garden; uniform in color and shape, being free from any tendency to "neck." Skin dark glossy green; flesh beautiful crimson.

Pkt., 5c; oz., 10c; ¼ lb., 25c; lb., 65c.  
**SUNNYBROOK**. Oblong pale green fruits weighing from 30 to 65 lbs. each. Fine-grained sweet flesh which practically melts in the mouth. Absolutely free from strings or white hearts. A fine shipping melon. Pkt., 10c; oz., 15c; ¼ lb., 40c; lb., \$1.00.

**THE TOM WATSON**. *Best quality, fine shape, large size, good shipper.* Extra long melon of attractive appearance, uniform in shape and quality; the luscious crimson flesh is "as sweet as honey." The average melon will weigh 50 to 60 pounds and measure about 28 inches long and about 12 inches in diameter. Skin dark green, with thick netting. Our choice seed was grown under the most painstaking care and selection. Pkt., 5c; oz., 10c; ¼ lb., 25c; lb., 65c.  
**SPECIAL OFFER**. One ounce each of the above wonderful Melons, postpaid, for only 50c.



## Archias' Delicious Muskmelon

Culture. Late in the spring drop 20 seeds in hills 5 feet apart. When up large enough, thin out to three or four plants; work the same as watermelons. The following list contains none but choice varieties.

Slug Shot Kills Melon Bugs. See page 25.

**ARCHIAS' SELECTED POLLOCK No. 10-25**. The most desirable type of the Rocky Ford melons.

Pkt., 5c; oz., 10c; ¼ lb., 35c; lb., \$1.00.

**BANANA**. The flesh is rich salmon color, very sweet and melting.

Pkt., 10c; oz., 15c; ¼ lb., 35c; lb., \$1.00.

**BURRELL'S GEM**. Salmon flesh of unusual thickness. The Melons grow to an average size of 6 inches.

Pkt., 5c; oz., 10c; ¼ lb., 35c; lb., 90c.

**EDWARDS' PERFECTO**. Deliciously sweet. Deep flesh with very small seed cavity.

Pkt., 5c; oz., 10c; ¼ lb., 25c; lb., 75c.

**HALE'S BEST**. Exceptionally fine quality, originating in California's famous Imperial Valley. Salmon flesh, medium early. A splendid shipping melon.

Pkt., 10c; oz., 15c; ¼ lb., 40c; lb., \$1.25.

**HEARTS OF GOLD**. Handsome and attractive. Medium size. Heavily netted. Flesh is

very thick; rich orange color. Matures in 70 days.

Pkt., 10c; oz., 15c; ¼ lb., 35c; lb., \$1.00.

**HONEY BALL**. Resembles in appearance the Honey Dew and the flavor is blended with the popular Texas Cannonball.

Pkt., 5c; oz., 15c; ¼ lb., 45c; lb., \$1.50.

**HONEY DEW MELON**. The green flesh is thick and is of a peculiar sweet flavor. Pkt., 5c; oz., 15c; ¼ lb., 35c; lb., \$1.25.

**HONEY ROCK** or **SUGAR ROCK**. Gold Medal winner. Heavier webbed than Honey Ball. The outstanding characteristics are quality, productiveness, good shipper, fine appearance. Deep orange flesh, exceedingly sweet.

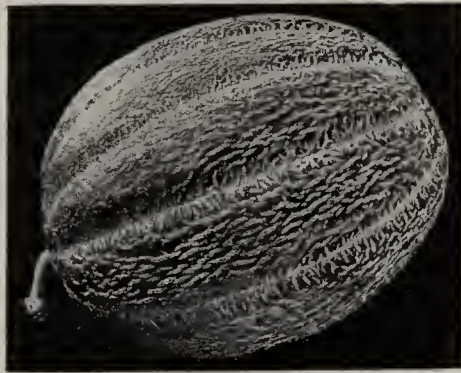
Pkt., 10c; oz., 15c; ¼ lb., 50c; lb., \$1.25.

**IMPROVED EARLY HACKENSACK**.

Pkt., 5c; oz., 10c; ¼ lb., 35c; lb., 90c.

**ROCKY FORD MELON**. Small seed cavity, thick, luscious flesh, high flavor.

Pkt., 5c; oz., 10c; ¼ lb., 35c; lb., 90c.



*Burrell's Gem.*

## Pedigreed Onion Seeds

Celebrated for Purity, Quality, Size and Productiveness—  
Money Makers and Prize Winners. One ounce will sow  
100 feet of drill; 4 to 5 pounds per acre for large Onions.

Culture. Sow in rich sandy loam in drills 1 foot apart, as early as possible in spring; cover with fine soil; when plants are strong, thin out to 3 or 4 inches. Have ground thoroughly cultivated, free from weeds and well fertilized.

**MAMMOTH PRIZETAKER**. Mild and delicate in flavor; excellent for fall and early winter.

Pkt., 5c; oz., 15c; ¼ lb., 50c; lb., \$1.75.

**ARCHIAS' LARGE RED WETHERSFIELD**. Grandest Red Onion grown. Very productive and fine keeper.

Pkt., 5c; oz., 15c; ¼ lb., 50c; lb., \$1.75.

**SELECT YELLOW GLOBE DANVERS**. Large size, early and abundant cropper.

Pkt., 5c; oz., 15c; ¼ lb., 50c.

**SOUTHPORT WHITE GLOBE**. Bulbs are of good size, splendid globe shape, pure white.

Pkt., 5c; oz., 20c; ¼ lb., 65c.

**SOUTHPORT RED GLOBE**. Large size, mild and tender.

Pkt., 5c; oz., 20c; ¼ lb., 50c.

**BERMUDA ONION SEED FROM TENERIFFE—WHITE BERMUDA**. Onion is really straw-yellow color; large size, very mild and easy to grow.

Pkt., 10c; oz., 20c; ¼ lb., 75c; lb., \$2.50.

## Select Onion Sets

Lowest market prices on large or small quantities given on application at any time. We handle Onion Sets in large quantities.

**YELLOW BOTTOM ONION SETS.**

Qt., 20c; gal., 60c; pk., \$1.00.

**WHITE BOTTOM ONION SETS.**

Qt., 25c; gal., 65c; pk., \$1.25.

**RED BOTTOM ONION SETS.** Qt., 20c; gal., 60c; pk., \$1.00.

## Bermuda Onion Plants

These plants give you two months' start over seed, maturing Onions of the highest quality. The Bermuda is a good keeper. Now you may have large, delicious, tender Bermuda Onions right from your own garden. Hundreds of millions of these plants are now used by professional gardeners. They produce the same fine results wherever used. Order your plants now and grow your own big Bermudas in your own garden.

100 plants for 15c; 500 for 65c;  
1000 for \$1.25, prepaid.



## Okra or Gumbo

An ounce of seed to 100 feet of row.

**Culture.** Sow in May and June after the ground is warm, in drills 3 feet apart, and thin to 10 inches apart in rows.

**KLECKLEY'S FAVORITE.** Pods 6 inches in length, carrying the thickness well throughout the length. Plant grows 3 feet high. Very early, prolific, light green pod. Pkt., 5c; oz., 10c; ¼ lb., 20c; lb., 50c.  
**WHITE VELVET.** Pods are round and smooth. Superior flavor and tenderness. It is very productive.

Pkt., 5c; oz., 10c; ¼ lb., 20c; lb., 50c.

**DWARF PROLIFIC GREEN POD.** Low growing variety.

Pkt., 5c; oz., 10c; ¼ lb., 20c; lb., 50c.

## Select Garden Peas

Add 7c for first pound and 1c each additional pound for postage.

**ARCHIAS' SELECT EARLY SURPRISE PEAS.** One of the earliest wrinkled varieties. Vines about 24 inches high.

Pkt., 10c; lb., 30c; 5 lbs., \$1.35

**ARCHIAS' SELECT EXTRA EARLY.** It ripens in about 40 days, grows about 18 inches high, pods well filled and of good quality. Pkt., 10c; lb., 25c; 5 lbs., \$1.00.

**ALASKA EXTRA EARLY.** The earliest blue Pea; height 2 feet.

Pkt., 10c; lb., 25c; 5 lbs., \$1.00.

**PREMIUM GEM.** Seeds green, wrinkled, height 1 foot. Second early.

Pkt., 10c; lb., 25c; 5 lbs., \$1.00.

**NOTT'S EXCELSIOR PEA.** The pods are filled with 7 to 9 large peas of superior tenderness and flavor. Height 1 foot.

Pkt., 10c; lb., 25c; 5 lbs., \$1.00.

**LAXTON'S PROGRESS.** A delicious new Pea, about 18 inches tall and a few days earlier than Laxtonian. Pods are 4 inches long and contain 8 large, sweet, green Peas. Wrinkled seed. Pkt., 10c; lb., 25c.

**LAXTONIAN.** A large-podded, dwarf variety. Height 1½ feet.

Large pkt., 10c; lb., 25c; 5 lbs., \$1.00.

**AMERICAN WONDER.** One of the earliest wrinkled sorts; about 9 inches high.

Pkt., 10c; lb., 25c; 5 lbs., \$1.00.

### Medium Early Or Main Crop Varieties

**ARCHIAS' SELECT EVERBEARING.** 2½ feet high. The peas are very large and wrinkled. Pkt., 10c; lb., 25c; 5 lbs., \$1.00.

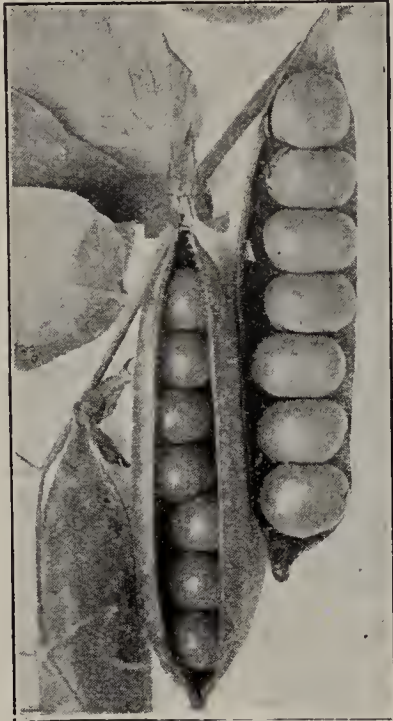
**IMPROVED STRATAGEM.** A splendid Pea for main crop; exceedingly productive. Pkt., 10c; lb., 25c; 5 lbs., \$1.00.

**IMPROVED CHAMPION OF ENGLAND.** Very rich, wrinkled, fine flavor; long, large pods. 4 feet.

Pkt., 10c; lb., 25c; 5 lbs., \$1.00.

**MAMMOTH MELTING SUGAR.** The Wonderful Edible Podded Pea. Height five feet.

Pkt., 10c; lb., 30c; 5 lbs., \$1.25.



Archias' Select Early Surprise.

## PEPPERS

An ounce of seed will produce 1250 plants; ½ lb. per acre.

**Culture.** The Pepper plant is tender, and must be started under glass, like eggplant. The plants should be set 1½ feet apart in rows 2 to 3 feet apart. A warm, moist soil is best, with plenty of rotted manure plowed under.

**NEW CHINESE GIANT.**

Immensely productive, a profitable variety both for market gardeners and amateurs.

Pkt., 10c; oz., 35c; ¼ lb., \$1.25.

**NEW RUBY KING.** Wonderful yielder, Peppers 3 to 4 inches in diameter; very desirable for mangoes.

Pkt., 5c; oz., 25c; ¼ lb., 80c.

**CELESTIAL.** Pods are borne upright; conical in shape.

Pkt., 5c; oz., 25c; ¼ lb., 80c.

**CAYENNE.** Very hot, long and slim; for seasoning.

Pkt., 5c; oz., 25c.

**CHERRY.** Round, small, good bearer, fine for fancy pickles.

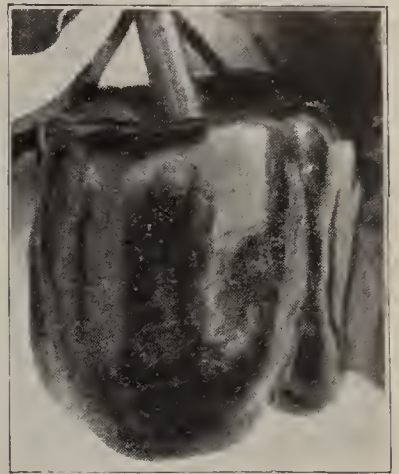
Pkt., 5c; oz., 25c.

**PIMENTO, ARCHIAS' PERFECTION.** The sweetest Pepper grown. Popular for canning. Pkt., 10c; oz., 30c.

**TABASCO.** Used exclusively for the famous Tabasco Sauce. Extremely hot. Pkt., 10c; oz., 35c.

**FINEST MIXED PEPPERS.** A mixture which you will find very desirable for pickling, mangoes, relishes, etc.

Price, 5c per pkt., oz., 25c.



Giant Pepper.

## Delicious PARSLEY

A Flavoring Herb of the Highest Culinary Value.

**Culture.** Soak seed for several hours and sow in border or frame. Thin the rows or transplant to another bed. If to be carried late into the fall, set 8 inches both ways, and cover with litter. It will go through the winter with moderate protection. Use 1 ounce of seed to 150 feet of drill. Make open air sowing in April.

**CHAMPION MOSS CURLED.** Beautifully crimped, curled leaves. Pkt., 5c; oz., 10c; ¼ lb., 25c.

**DOUBLE CURLED.** Compact; very curly. Bright green. Pkt., 5c; oz., 10c; ¼ lb., 25c.

## The Best PARSNIPS

Spade the soil deep and sow in shallow drills 15 inches apart early in the spring in rich soil. Hoe often and deep.

**HOLLOW CROWN, LONG SMOOTH.** Smooth, large, tender and sugary; one of the best. Our stock is very fine.

Pkt., 5c; oz., 10c; ¼ lb., 20c; lb., 60c.

## Archias' Prolific PUMPKINS

For Bugs on Squashes and Pumpkins Use "Slug Shot." See page 25.

**KENTUCKY FIELD.** Best for field culture in corn.

Pkt., 5c; oz., 10c; ¼ lb., 15c; lb., 40c.

**JAPANESE PIE.** Flesh very thick, solid, fine grained, dry and sweet.

Pkt., 5c; oz., 10c; ¼ lb., 25c; lb., 85c.

**TENNESSEE SWEET POTATO.** Excellent for pies. Good keeper.

Pkt., 5c; oz., 10c; ¼ lb., 25c; lb., 85c.

**KING OF MAMMOTHS.** Bright golden yellow. One of the best pie Pumpkins.

Pkt., 5c; oz., 10c; ¼ lb., 35c; lb., \$1.00.

**LARGE CHEESE.** Yellow, sweet, brittle and thick. Oz., 10c; ¼ lb., 20c; lb., 60c.

**SUGAR PUMPKIN.** Orange-yellow; small; keeps well; prolific.

Pkt., 5c; oz., 10c; ¼ lb., 25c; lb., 75c.

**GREEN STRIPED, CROOKNECK CUSHAW.** Very prolific.

Pkt., 5c; oz., 10c; ¼ lb., 25c; lb., 75c.

**MAMMOTH WHITE CUSHAW.** Crookneck. One of the very best.

Pkt., 5c; oz., 10c; ¼ lb., 25c; lb., 75c.

**CONNECTICUT FIELD or YANKEE PIE.** Large size; red; ribbed.

Pkt., 5c; oz., 10c; ¼ lb., 15c; lb., 45c.



Sugar Pumpkin.





Vick's Scarlet Globe Radishes.

## Archias' Radishes

Radishes must be grown quickly in rich, loose soil, and gathered before reaching full size to prevent becoming soft and pithy. Frequent plantings should be made for succession, to insure a supply of fresh, tender Radishes for table use at all times.

### Early Turnip-Shaped Varieties

**COOPER'S SPARKLER** (*Scarlet Turnip White Tip*). Very crisp; good quality.

Pkt., 5c; oz., 10c; ¼ lb., 25c; lb., 65c.

**EARLY SCARLET ERFURT TURNIP**. Particularly adapted to forcing. It has a very small top, and will bear close planting.

Pkt., 5c; oz., 10c; ¼ lb., 25c; lb., 65c.

**ARCHIAS' CRIMSON GIANT GLOBE**. Best Radish for forcing in the greenhouse or outdoors.

Pkt., 5c; oz., 10c; ¼ lb., 25c; lb., 75c.

**EARLIEST WHITE TURNIP** (*White Box*). Of quick growth; leaves short.

Pkt., 5c; oz., 10c; ¼ lb., 25c; lb., 65c.

**MIXED EARLY TURNIP RADISH SEED**. A select mixture of the most desirable Turnip sorts.

Pkt., 5c; oz., 10c; ¼ lb., 25c; lb., 50c.

### Long Radishes—Spring and Summer

**ARCHIAS' LONG WHITE ICICLE**. About six inches in length. Matures in 20 to 28 days.

Pkt., 5c; oz., 10c; ¼ lb., 25c; lb., 65c.

**LONG SCARLET, SHORT TOP**. The standard long variety for market and home.

Pkt., 5c; oz., 10c; ¼ lb., 25c; lb., 65c.

**NEW BRIGHTEST LONG SCARLET**. Fiery scarlet, tipped white; early.

Pkt., 5c; oz., 10c; ¼ lb., 25c; lb., 65c.

**WHITE VIENNA or LADY FINGER**. Pure white, long fine grain, tender.

Pkt., 5c; oz., 10c; ¼ lb., 25c; lb., 65c.

**CHARTIER or SHEPHERD**. Does not become pithy or hollow.

Pkt., 5c; oz., 10c; ¼ lb., 25c; lb., 65c.

**WHITE STRASBURG**. Oblong, tapering shape; firm, brittle and tender. Best variety for summer use.

Pkt., 5c; oz., 10c; ¼ lb., 25c; lb., 65c.

**FRENCH BREAKFAST**. Bright red, tipped with white. Oblong in shape.

Pkt., 5c; oz., 10c; ¼ lb., 25c; lb., 65c.

### Winter Varieties

**LONG BLACK SPANISH**. Very hardy and a good keeper; sow with your turnips.

Pkt., 5c; oz., 10c; ¼ lb., 25c; lb., 75c.

**CHINESE ROSE WINTER**. Very smooth, bright rose color; large.

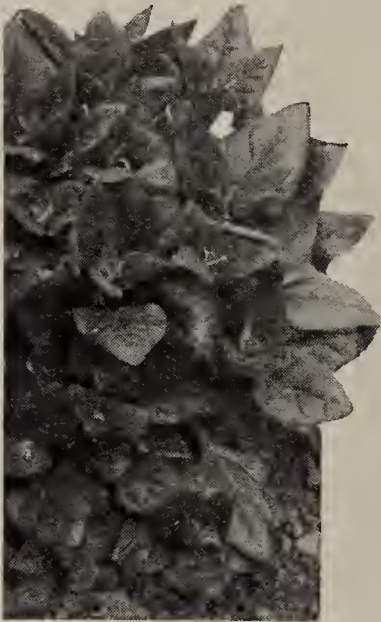
Pkt., 5c; oz., 10c; ¼ lb., 25c; lb., 75c.

**CALIFORNIA WHITE MAMMOTH**. 8 to 12 inches long, and about 2½ inches thick; solid.

Pkt., 5c; oz., 10c; ¼ lb., 25c; lb., 75c.

**MIXED WINTER RADISHES**. A mixture of the best fall and winter varieties; sow broadcast with turnips; sure to please.

Pkt., 5c; oz., 10c; ¼ lb., 25c.



New Zealand Spinach.

## SPINACH

Should be planted in very rich ground, the richer the better. For early spring use sow early in autumn and protect the plants with a light covering of leaves or straw. In the South Spinach can be grown without covering.

It requires about 20 pounds to sow an acre broadcast; 5 to 8 pounds per acre in drills; 1 ounce to 30 or 35 feet of drill.

**SELECTED BLOOMSDALE**. The large leaves are very thick, rounded, dark green and curled.

Pkt., 5c; oz., 10c; ¼ lb., 15c; lb., 50c; 5 lbs., \$2.25.

**LONG STANDING BLOOMSDALE**. An improved strain of excellent quality; a favorite with the market gardeners.

Pkt., 5c; oz., 10c; ¼ lb., 15c; lb., 50c.

**NEW ZEALAND**. Prickly seeded.

Oz., 10c; ¼ lb., 25c; lb., 75c.

**TENDERGREEN or MUSTARD SPINACH**. See Mustard.

## Rhubarb or Pieplant

Highly esteemed for pies, tarts, jelly and marmalade. Sow in drills 1 foot apart early in spring. In the fall or next spring transplant 3 feet apart in deeply dug, rich soil.

**ARCHIAS' MAMMOTH VICTORIA**. Largest, most productive variety. Large pkt., 10c; oz., 15c; ¼ lb., 50c.

**RHUBARB ROOTS**. Set in spring, they will furnish leaf stalks the following season.

Large roots, 3 for 25c; doz., 75c, by mail, postpaid.

By express, not prepaid, 25 for \$1.25; 100 for \$4.75.

## SALSIFY (Vegetable Oyster)

Sow early in spring in drills 15 inches apart, and thin to 2 inches apart. Cultivate like carrots or parsnips.

**MAMMOTH SANDWICH ISLAND**. The roots grow to double the size of the old sort, are very smooth, of superior quality.

Pkt., 10c; oz., 20c; ¼ lb., 50c; lb., \$1.50.

## Archias' Best Squashes

Acknowledged the Cream of the Squash Family.

**Culture**. About the same as melons. Seed should not be planted until warm weather. For summer Squashes 4 ounces to 100 hills; winter sorts, 8 ounces. Use Slug Shot for the bugs.

**EARLY WHITE BUSH SCALLOPED**. Light cream color.

Pkt., 5c; oz., 10c; ¼ lb., 25c; lb., 85c.

**GOLDEN SUMMER CROOKNECK**. Early, warty, yellow variety of good quality.

Pkt., 5c; oz., 10c; ¼ lb., 25c; lb., 85c.

**MAMMOTH CHILI**. Largest of all Squashes.

Pkt., 5c; oz., 10c; ¼ lb., 35c; lb., \$1.00.

**GOLDEN HUBBARD**. Good fall and winter variety.

Pkt., 5c; oz., 10c; ¼ lb., 35c; lb., \$1.00.

**TABLE QUEEN or DES MOINES ACORN**.

Pkt., 10c; oz., 20c; ¼ lb., 45c; lb., \$1.25.

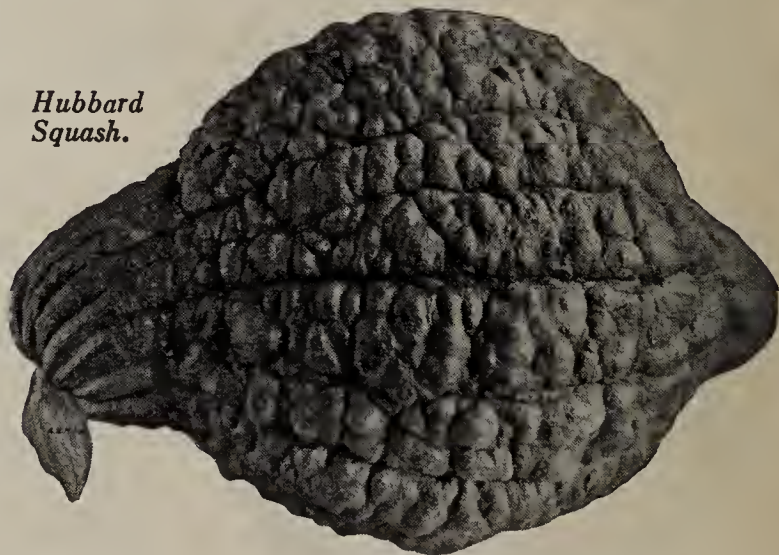
**COCOZELLE or ITALIAN VEGETABLE MARROW**.

Pkt., 5c; oz., 15c; ¼ lb., 45c; lb., \$1.25.

**NEW GIANT STRAIGHTNECK**.

Pkt., 5c; oz., 10c; ¼ lb., 25c; lb., 85c.

Hubbard Squash.



**HUBBARD** (*Chicago Warty*). For fall and winter use.

Pkt., 5c; oz., 10c; ¼ lb., 25c; lb., 85c.

**BANANA**. Excellent winter Squash. Flesh deep yellow, fine grained and sweet. Pkt., 10c; oz., 15c; ¼ lb., 35c.



## THE BEST TOMATOES

**Culture.** Sow seed in March and April in the hotbed, or in pots in a sunny exposure in the house. If it is desired to make very stocky plants they may be transplanted when about 2 to 3 inches high. When 5 or 6 inches high, if the ground has become warm, transplant to the open ground, on a rainy or cloudy day. Set the plants 4 feet apart each way; the dwarf sorts may be planted closer.

### Archias' Selected Ponderosa

A purple-pink, main crop Tomato of the largest size. The vines are vigorous and very productive. The fruit is solid with exceptionally few seeds; fairly smooth and considered of very good quality, especially by those who prefer a Tomato quite free from acid. It is a very desirable Tomato for slicing.

Pkt., 10c; 2 pkts., 15c; ½ oz., 25c; oz., 45c; ¼ lb., \$1.50.

**OXHEART.** (120 days). A new variety of unique shape—like a big ox-heart, or a Delicious apple. Of large size, best quality of Tomato flavor, smooth pink skin, few seeds; its supreme qualification is the broken cell structure, and the one to two inches of solid flesh before a seed is reached. A heavy yielder; on healthy, open, spreading vines.

Pkt., 15c; 2 pkts., 25c; ½ oz., 45c; oz., 75c.



*Ponderosa.*

**STONE.** Late or main-crop, yielding a good crop. Large, smooth, solid, deep scarlet.  
Pkt., 5c; oz., 25c; 4 ozs., 75c.

**JOHN BAER.** Early and productive; not unlike Chalk's Jewel in size, form and color. A heavy yielder.  
Pkt., 5c; oz., 25c; 4 ozs., 75c.

**LIVINGSTON'S BEAUTY TOMATO.** Its size, shape and productiveness make it desirable for all purposes.  
Pkt., 5c; oz., 25c; ¼ lb., 75c.

**ARCHIAS' MISSOURI GIANT.** The "Jumbo" of All Tomatoes. The largest fruited of the Climbing Tomatoes, bearing enormous crops from early harvest until killed by frost. Bright red fruit, ripening well up to the stem; unexcelled for keeping, shipping, canning, preserving or preparing fresh for the table. Well cultivated plants have attained the height of 9 feet and 10 feet across.

Pkt., 10c; 2 pkts., 15c; ½ oz., 35c; oz., 55c.

**DWARF CHAMPION.** Dwarf, compact, upright growth; fruit smooth, solid.  
Pkt., 5c; oz., 35c; ¼ lb., \$1.00.



*Oxheart  
Tomato.*

**GOLDEN QUEEN.** Handsome large yellow, very solid and smooth.  
Pkt., 10c; oz., 35c; ¼ lb., \$1.00.

**JUNE PINK TOMATO.** Earliest and most productive pink-fruited Tomato.  
Pkt., 5c; oz., 35c; ¼ lb., \$1.00.

**CRIMSON CUSHION** or **BEEFSTEAK.** Remarkable size; crimson-scarlet; very solid.  
Pkt., 10c; oz., 45c; ¼ lb., \$1.50.

## Archias' TABLE TURNIPS

**Culture.** For spring crop, sow as early as the ground can be worked, and none but early varieties. For fall crop, sow middle of summer. Sow 1 to 2 pounds seed per acre.

**SHOGAIN** or **JAPANESE.** A new, extremely useful sort. It is quick growing and supplies large edible strap leaves as well as smooth globular roots of superior quality.

Pkt., 5c; oz., 10c; ¼ lb., 25c; lb., 60c.

**EXTRA EARLY RED TOP MILAN.** The earliest in cultivation.  
Oz., 10c; ¼ lb., 25c; lb., 65c.

**PURPLE TOP STRAP LEAF.** For spring and fall use.  
Oz., 10c; ¼ lb., 20c; lb., 50c.

**LARGE EARLY RED TOP GLOBE.** Very large, globe-shaped.  
Oz., 10c; ¼ lb., 20c; lb., 50c.

**LARGE WHITE GLOBE.** Good for table and stock.  
Oz., 10c; ¼ lb., 20c; lb., 50c.

**GOLDEN BALL.** Globe-shaped, amber colored and sweet.  
Oz., 10c; ¼ lb., 20c; lb., 50c.

**AMERICAN YELLOW PURPLE-TOP RUTABAGA.** Requires a longer season in which to grow than do the turnips; the seed should be sown the first to middle of July.

Oz., 10c; ¼ lb., 25c; lb., 75c.

## Wilt Resistant Tomatoes

**MARGLOBE.** Wilt resistant. New midseason sort. A hybrid from Marvel and Livingston's Globe. Entirely immune from rust and wilt.  
Pkt., 10c; ½ oz., 20c; oz., 35c; 4 ozs., \$1.25.

**PRITCHARD** or **SCARLET TOPPER.**  
Pkt., 10c; ½ oz., 25c; oz., 40c; ¼ lb., \$1.25.

**BREAK O' DAY.**  
Pkt., 10c; ½ oz., 25c; oz., 40c; ¼ lb., \$1.25.

## Preserving Tomatoes

**Yellow Pear, Red or Yellow Peach Tomato.** Price, either variety  
Pkt., 5c; 6 pkts., 25c.

**Strawberry or Husk Tomato (Ground Cherry) Prolific.**  
Pkt., 5c; 6 pkts., 25c.

## Pedigreed Tobacco Seed

**HAVANA.** Grown from seed imported from Vuelta de Abajo.  
Per pkt., 10c; oz., 40c.

**CONNECTICUT SEED LEAF.** An old, well known variety.  
Per pkt., 10c; oz., 30c; ¼ lb., \$1.00; lb., \$3.25, postpaid.

**IMPROVED WHITE BURLEY.** A popular sort.  
Per pkt., 10c; oz., 40c; ¼ lb., \$1.25.

**YELLOW PRIOR.** Good variety.  
Pkt., 10c; oz., 30c; ¼ lb., \$1.00.

**BIG YELLOW ORONOKO.** Favorite Virginia variety.  
Pkt., 10c; oz., 30c; ¼ lb., \$1.00.





## How to Grow a Fine Lawn

Plow or dig up the surface thoroughly to a depth of 12 inches and mix the soil with well rotted manure or our Archias' Sure Lawn Fertilizer, the latter being at all times preferable, as it is more durable in its effect and free from weed seeds, which are always contained in more or less quantities in stable manure.

The soil should be well pulverized before sowing, and the lawn kept free from weeds the first season. The quantity of seed required is one pound to every 300 square feet. 75 to 100 lbs. to acre.

## Archias' Evergreen Lawn Grass Seed

This is a mixture of celebrated Kentucky Blue Grass and other soft-bladed grasses that will withstand the heat and dry weather of our summer and our most severe winters, and insure a permanent evergreen lawn. Archias' Evergreen Lawn Grass Seed is as pure and reliable as can be found anywhere. We highly recommend this mixture for general purposes. Lb., 45c; 3 lbs., \$1.25; 10 lbs., \$3.00, prepaid.

**ARCHIAS' "SHADY NOOK" LAWN MIXTURE.** A mixture of grasses that will thrive in a shady situation, under trees or close to walls where there is little sun. Lb., 45c; 3 lbs., \$1.25; 10 lbs., \$3.00, postpaid.

**ARCHIAS' TERRACE SOD LAWN GRASS.** Best mixture for terraces, railroad embankments and side hills, preventing heavy rains from washing. Will withstand drought and produce a rich, velvety green turf throughout the season. Lb., 45c; 3 lbs., \$1.25; 10 lbs., \$3.00, postpaid.

**CHEWING'S FESCUE.** Perennial. Succeeds in all kinds of soils. Used extensively in athletic fields and golf courses. Sow 40 lbs. per acre. Lb., 45c; 3 lbs., \$1.25, postpaid.

**HERD'S GRASS (Agrostis alba).** Perennial. Grows best in rich, moist soils. Excellent for lawns, hay or permanent pasture. Sow 20 lbs. per acre. Lb., 25c; 3 lbs., 65c, postpaid.

**ITALIAN RYE GRASS.** American grown. An annual grass with tall, broad, flat leaves; plants grow in tufts if left uncut. Very valuable for winter and spring lawns with its quick growth. Lb., 25c; 5 lbs., 85c, postpaid.

**KENTUCKY BLUE GRASS.** Fancy clean. For lawns when mixed with other grasses, and especially valuable as a pasture grass. About three bushels to the acre for pasture. Lb., 30c; 4 lbs., \$1.00; 10 lbs., \$2.25, postpaid.

**POA TRIVIALIS (Rough Stalked Meadow Grass).** This grass is known as "Blue Grass of the Shade," being particularly adapted to shady places. Belongs to the same family as the Kentucky Blue. Sow 30 lbs. per acre. Lb., 35c; 3 lbs., \$1.00, postpaid.

**RED TOP FANCY.** Re-cleaned seed. Grows well in almost any soil and is valuable either for meadows, pasture or lawns, especially so for moist land. About 15 pounds to the acre. Lb., 20c; 5 lbs., 85c; 10 lbs., \$1.50, postpaid.

**WHITE CLOVER (Trifolium repens).** Valuable in lawn grass mixtures and indispensable in pasture mixtures. Lb., 60c, postpaid.

## Fertilizers for Lawn, Garden and Greenhouse

NO LAND IS SO GOOD BUT IT WILL PAY A GOOD PROFIT ON A JUDICIOUS USE OF FERTILIZER.



### Vigoro

Specially Prepared Plant Food.

VIGORO produces velvety lawns, more and prettier flowers, full foliaged shrubbery, delicious vegetables and leafy trees. It is the ideal plant food for whatever you grow. For top dressing 100 lbs. will cover lawn 40x100 feet. 12-oz. pkg., 10c; 5 lbs., 50c; 10 lbs., 85c; 25 lbs., \$1.50; 50 lbs., \$2.50; 100 lbs., \$4.00.

### Loma

Can also supply LOMA at same price as Vigoro. All new fresh stock.

### Bone Meal

For Roses, Grapes, Fruit and Ornamental Trees. Lb., 10c; 5 lbs., 25c; 10 lbs., 45c; 25 lbs., \$1.00.

### Wizard Brand Sheep Manure

Pulverized Sheep Guano is the ideal dressing for cemetery or private lawns, golf courses, or wherever a strong, luxuriant growth of grass is needed. Market gardeners and truckers will find sheep guano extremely profitable to use on all crops. Carnations, roses, chrysanthemums and violets are particularly benefited by its liberal use. 25-lb. bag, 75c; 50-lb. bag, \$1.25; 100-lb. bag, \$2.25.

### Potting Soil

For repotting ferns and all house plants. Specially prepared and ready for use. Pk., 25c; 1/2 bu., 45c; bu., 75c; 2 bus., \$1.25, not prepaid.

### Nitrate of Soda

For vegetables use 300 lbs. to acre. For lawns and pot plants use in liquid form. 1 lb. to 25 gals. water. Price, lb., 10c; 10 lbs., 75c; 25 lbs., \$1.25; 100 lbs., \$3.90.

### Sulphate of Ammonia

Increases plant growth on farms, gardens, orchards, vineyards, greens, lawns and shrubs. Lb., 15c; 5 lbs., 50c; 10 lbs., 85c; 25 lbs., \$1.75; 100 lbs., \$4.75.

### Armour's Reliable Fertilizer

Ask for prices, stating quantity wanted.

### Fairy Brand Plant Food

Will make your house plants and garden flowers more vigorous and beautiful. Price per can (feeds 25 plants for six months), for only 20c each, postpaid.

## Lime for Lawns and Gardens

This is an excellent tonic—sweetens the soil, stimulates growth, deepens color, improves quality, releases nitrogen for plant food and aids blooming. Flowers in pots, boxes or in the garden, vegetables and also fruit and ornamental trees and shrubs show marked increase in growth and beauty by a liberal application of lime. Apply about a pound to every 30 square feet surface and rake in gently. This may be done before planting or after plants are several inches high. 10-lb. bag, 25c; 50 lbs., 65c; 100 lbs., \$1.00. Delivered in Sedalia.



# Archias' Hay and Pasture Grasses

Prices on this page subject to market change. Write for special prices stating kind and quantity wanted.

## Archias' Northern Grown Alfalfa or Lucerne (Medicago Sativa)

"There is no state in the Union in which Alfalfa cannot be successfully grown."

Alfalfa produces 3 to 7 tons of hay to the acre.

"Its long, branching roots penetrate far down, and thus constitute a gigantic subsoiler. These become an immense magazine of fertility. As soon as cut they begin to decay and liberate the vast reservoir of fertilizing matter below the plow, to be drawn upon by other crops for years to come."

Prepare the land thoroughly and sow seed at the rate of 15 to 20 pounds per acre, with a broadcaster or grass seeder. Cover with a brush or light harrow. Young plants are quite tender, and the land must be free from weeds until they become established. Lb., 25c; 5 lbs., \$1.00; 10 lbs., \$1.75. See below for Nitragin for inoculating.

## Lespedeza

**MAMMOTH KOREAN LESPEDEZA, AMERICA'S GREATEST LEGUME.** Adapted to any soil, sweet or sour, rich or poor. Makes crop of hay or seed same year sown. Reseeds itself each year, unexcelled for pasture, hay or soil building. It is drought-resistant. Height, 15 to 24 inches. 5 pounds per acre will produce a heavy crop of hay the second year, but 10 to 15 pounds will secure a full hay crop or seed for harvest the first year. Our stock is of the highest quality and will give satisfaction. Price of Genuine Mammoth Korean Lespedeza, 1 lb., 20c; 6 lbs., \$1.00, postpaid. For prices on larger quantities see our Red List or write us stating quantity wanted.

**LESPEDEZA SERICEA.** A new perennial Lespedeza introduced by the U. S. Dept. of Agriculture. It is an oriental perennial legume which grows on poor land and acid or sour soil as well as on rich soil. After established, is a great drought resister with an enormous root system. It enriches the soil, lives through the winter, starts growth early in the spring and gives at least 3 cuttings a season with as high as 3 tons of hay per acre from a single cutting. Plant very shallow in 3 1/2-ft. rows on a well prepared bed, in late spring, 3 to 4 lbs. per acre. Cultivate shallow to keep weeds down. Price, 1/4 lb., 20c; lb., 60c, postpaid.

### ARCHIAS' SELECTED AND RECLEANED

## Grass and Clover Seed

### ALL NEW CROP

Clover, Red, fancy.	Alfalfa, Grimm, Dakota grown.
Clover, Red, choice.	Timothy, fancy.
Clover, Red, prime.	Timothy, choice.
Clover, Mammoth, fancy.	Timothy, prime.
Clover, Alsike, fancy.	Red Top, fancy.
Clover, Alsike, choice.	Red Top, choice.
Clover, Alsike and Timothy.	Kentucky Blue Grass, fancy.
Clover, Sweet, White Blossom, hulled.	Kentucky Blue Grass, choice.
Clover, Sweet, Yellow Blossom, hulled.	English Blue Grass, fancy.
Clover, White Dutch, fancy.	Kentucky Orchard Grass, fancy.
	Kentucky Orchard Grass, prime.
	Archias' Evergreen Lawn Grass.
	Hubam Sweet Clover.

Write for prices on Grass and Clover Seeds, state kind and quantity wanted.

## Cow Peas

Do not plant until ground becomes warm. Cow Peas and Soja Bean Hay is fully equal to Red Clover or Wheat Bran. Write for special prices on bushel lots or over.

**WHIP-POOR-WILL.** Brown speckled pea, bushy variety. Lb., 10c; 5 lbs., 35c; 10 lbs., 65c.

**NEW ERA.** An extra early Whip-poor-will. Price same as Whips.

**ARCHIAS' NEW DIXIE OR MAMMOTH BLACK EYE.** An improved variety, valuable for table use. Pkt., 10c; lb., 15c; 5 lbs., 65c; 10 lbs., \$1.00.

**LADY PEAS.** Splendid for table use; great yielder. Pkt., 10c; lb., 30c; 2 lbs., 50c; 10 lbs., \$2.25.

## Archias' Big Yielding Millet

Sow 30 to 40 pounds to the acre.

**ARCHIAS' GOLDEN OR GERMAN MILLET.** It is sown in the Spring, and after harvesting leaves the ground in the finest condition for wheat. 10 lbs., 60c.

The Archias' Seed Store Corp. gives no warranty, express or implied, as to description, quality, productiveness, or any other matter of any seeds they send out, and will not be in any way responsible for the crop. When mentioned, purity and germination tests are for information only and without warranty.

## Mammoth or Russian Sunflower Seed

One of the best egg-producing foods known for poultry. It can be planted any time until July and will bring a large crop. Just what you need to fill up the vacant spots in your garden. 1 lb., 15c; 5 lbs., 60c; 10 lbs., \$1.00; 25 lbs., \$2.25.

## Soy or Soja Beans

Soy Beans should be planted in May or June. They withstand drought to an extraordinary degree. One-third to one-half bushel of seed is planted per acre, with a drill, in rows 30 inches apart.

**MIDWEST OR MONGOL YELLOW.** An early bunch variety, very prolific, a popular sort. 1 lb., 10c; 5 lbs., 30c; 10 lbs., 50c.

**EARLY MORSE.** A leading variety, grows 3 to 4 feet high, produces a good crop of hay and is a heavy seeder. Lb., 10c; 5 lbs., 30c; 10 lbs., 50c.

**WILSON.** Matures in 120 days. A black bean, upright in growth. It is popular for hay. 1 lb., 10c; 5 lbs., 30c; 10 lbs., 50c.

**VIRGINIA.** The best Bean for hay or ensilage. It attains a height of 50 inches. Brown seeds. 1 lb., 10c; 5 lbs., 30c; 10 lbs., 50c.

## Red Rust-Proof or Texas Red Seed Oats

Yields enormous crops of heavy golden grain.

**COLUMBIAN OATS.**

**IOWA BLACK OATS.**

**KANOTA OATS.** Earlier than Red Texas and a heavy yielder.

Write for prices, stating quantity wanted.

## Dwarf Essex Rape

True Stock, the Very Best; Yields Immense Crops.

Sow in Summer for Fall and Winter pasture. It is especially good for sheep, but all kinds of stock and chickens are fond of it and do well on it. Sow 5 pounds to the acre broadcast. Pkt., 10c; lb., 20c, prepaid. Not prepaid, lb., 10c; 5 lbs., 45c; 10 lbs., 75c; 25 lbs., \$1.75.

## Sudan Grass

A New Forage Crop of Immense Value to the Middle West.

Sudan is a tall, annual grass, reaching a height of from 7 to 9 feet when planted in rows and allowed to mature for a seed crop; broadcast and cut "in the bloom" for hay, about 4 feet.

For a seed crop plant 2 pounds seed per acre in rows 36 inches apart. For hay crop broadcast or drill 12 to 20 pounds to acre. Price, lb., 20c, postpaid. Not postpaid, lb., 15c; 5 lbs., 50c; 10 lbs., 90c. Special price on 100-lb. lots.

Alfalfa, All Clovers, Soy Beans, Cow Peas, Peas, Beans, Vetch, Peanuts, should be inoculated with



### NITRAGIN PRICES ARE POSTPAID

ALFALFA, ALL CLOVERS			VETCH, PEAS, BEANS		
Size	Inoculates	Price	Size	Inoculates	Price
1/2 bu.	30 lbs. seed	\$.035	1/2 bu.	30 lbs. seed	\$.035
1 bu.	60 lbs. seed	.65	1 bu.	60 lbs. seed	.50
2 1/2 bu.	150 lbs. seed	1.40	1 2-3 bu.	105 lbs. seed	.80
			5 bu.	300 lbs. seed	2.25

### SPECIAL PRICES ON SOY BEANS AND COW PEAS

(Note sizes carefully—not packed in smaller sizes)

1-bu. size—inoculates	60 lbs. seed	\$.035
2-bu. size—inoculates	120 lbs. seed	.65
5-bu. size—inoculates	300 lbs. seed	1.40
10-bu. size—inoculates	600 lbs. seed	2.45

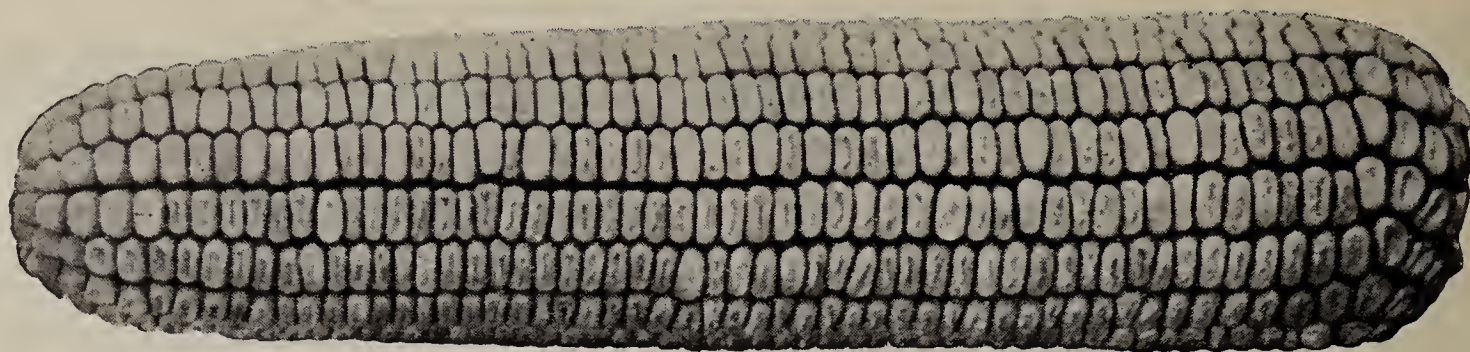
### GARDEN NITRAGIN

Inoculates from 1 ounce to 8 lbs. seed of Beans, Peas, or Sweet Peas. Price, 25c.

IMPORTANT: When ordering NITRAGIN, always be sure to state kind of legume seed you wish to inoculate.







## Archias' Seed Corn and Forage Crops

Buy Missouri Grown Seed Corn and Take No Chances on Getting the European Corn Borer.

### Golden Mortgage Lifter

This wonderful variety, first introduced by us in 1893, has gained great favor among the corn growers everywhere. The large amount of corn produced on so small a cob surprises everyone.

Price of Archias' Golden Mortgage Lifter, postpaid—big package, 10c; pint, 20c; quart, 35c. By freight or express, pk., 75c.

### Early Red Snow Cap

The earliest red corn of all. Matures in 80 to 85 days. Kernels are of a bright cherry-red color, with yellowish cap—the result of a cross between a red flint and a yellow dent. This corn often matures in less than 80 days. Price, by mail, postpaid, lb., 20c. By freight or express, pk., 60c.

### Special Reid's Yellow Dent

This is the highest type of this most popular and wonderful variety. Reid's Yellow Dent won more prizes at the many corn shows than all others combined. Pkt., 10c; lb., 20c; 3 lbs., 50c, postpaid. By freight or express, per qt., 15c; pk., 50c.

### Early Yellow Rose

The stalks grow 8 to 10 feet high, full dark foliage, setting its ears low, usually maturing two good sound ears 8 to 12 inches long. 90 to 100 days. By mail, postpaid, 1 lb., 20c. By freight or express, qt., 15c; pk., 50c.

### Boone County White

Good on strong land and a heavy yielder. White cob of medium size. Matures in 115 to 120 days. By mail, postpaid, 1 lb., 20c. By freight or express, qt., 15c. pk., 50c.

### St. Charles White

A pure white variety with small red cob; ears 8 to 11 inches long, 16 to 18 rows of medium deep, broad kernels. By mail, postpaid, 1 lb., 20c; 3 lbs., 50c. By freight or express, qt., 15c; pk., 50c.

### Iowa Silver Mine

It is a pure white corn, with large ears, often measuring 10 to 11 inches in length. Matures in about 100 days. By mail, postpaid, 1 lb., 20c. By freight, qt., 15c; pk., 50c.

Can also furnish Golden Cartner, Improved Leaming, Iowa Gold Mine, Golden Beauty, Johnson C. White, Hickory King, Speckled Beauty. Ask for prices.

### Broadcast Hand Seeders

**CYCLONE HAND SEEDER.** Does the work of larger capacity seeders equally as well and costs much less. Weighs 5 lbs. Price reduced to \$1.85.



**THE ARCHIAS' HORN SEEDER.** A light, accurate seeder that will broadcast clean seed from 30 to 40 feet. Length, extended, 30 inches. Weight 12 ounces. Good, heavy grade of ducking used on sack. Price, 95c, postpaid.



GRAIN BAGS. 35c each; \$30.00 per 100.

### Write for Special Prices

Save Money on Seed Corn, Farm and Field Seeds by writing us for Special Prices, stating kind and quantity wanted when you are ready to buy. Plant liberally this season of these money-making crops.

### Barley

**SCOTCH (Six-rowed).** It is good for feeding, not having as long beard as some other kinds. Lb., 10c; 3 lbs., 25c; pk., 40c; 1 bu., \$1.25; 2 bus., \$2.35.

### Cane Seed for Fodder

Cane seed is also largely grown for stock feeding. It yields heavily. It can be raised anywhere and is sown extensively in dry sections where tame grasses can not be grown. For forage sow 50 to 100 pounds broadcast to the acre. We sell many carloads of Cane Seed annually for fodder, and will be pleased to name special prices on application. State quantity wanted.

**GOLDEN DRIP OR HONEY CANE.** Makes the finest sorghum. 15c per lb.; 5 lbs., 65c, postpaid. By express or freight, 5 lbs., 35c; 1 pk., 50c.

**EARLY ORANGE CANE.** Stalk heavier and a little later than Amber. Best seed. 15c per lb., postpaid. By express or freight, 5 lbs., 25c; 1 pk., 40c.

**EARLY AMBER CANE.** The earliest. Best seed. Lb., 15c, postpaid. By express or freight, 5 lbs., 25c; pk., 40c.

### Rye

May be sown in either fall or spring. Makes fine pasture. Sow 1 1/2 to 1 1/2 bushels per acre. Price on application.

### Kaffir Corn

One of the best forage plants. Makes an excellent food for poultry, horses and cattle. Grows on land too poor for corn.

**WHITE.** The best variety, postpaid, per lb., 15c; 5 lbs., 45c.

### Grohoma

A new fodder plant of the Sorghum family producing heavy crops of grains and an abundant supply of fodder that is rich in protein. Plant and cultivate same as Kaffir or Cane. Highly recommended for dairymen. Price, 1 lb., 15c; 5 lbs., 35c.

### Feterita

Feterita is recommended especially for its earliness and its ability to withstand dry weather. Chinch bugs do attack it but they seem to prefer other crops. The grain is white, large and softer than that of Kaffir. It should not be planted too early nor too deeply. Lb., 15c; 5 lbs., 50c, postpaid.

### Yellow Milo Maize

Great producer of fine forage. Grows 8 to 12 feet high, stooing heavily. Large seed heads give a crop equal to corn. Plant 10 pounds per acre. Lb., 15c; 5 lbs., 65c, postpaid. Write for prices.

### Japanese Buckwheat

This is the most productive of all buckwheat. Best for bees. Per lb., 15c; 5 lbs., 50c, postpaid.

### Broom Corn

**ARCHIAS' IMPROVED EVERGREEN.** Grows about 8 to 10 feet high, stands up well, entirely free from crooked brush. The fiber is long and fine. Lb., 15c; 5 lbs., 45c.

### SEED DISINFECTANTS (DU BAY)

**SEMESAN JR. OR BAYER DUST.** A dust disinfectant for seed corn. 4-oz. tin, 50c; 1-lb. tin, \$1.75; 5-lb. tin, \$8.00.

**CERESAN.** A dust disinfectant for wheat, oats, barley and certain other cereals. 8-oz. tin, 50c; 1-lb. tin, 75c; 5-lb. tin, \$3.00.

**SEMESAN.** A general disinfectant for many vegetable and flower seeds or bulbs, and certain plant diseases. 2-oz. tin, 50c; 1-lb. tin, \$2.75; 5-lb. tin, \$13.00.

**SEMESAN BEL.** An instantaneous dip disinfectant for seed potatoes. 4-oz. tin, 50c; 1-lb. tin, \$1.75; 5-lb. tin, \$8.00.

Du Bay Seed Disinfectants are poisonous and owing to present Postal Regulations cannot be sent through the mails but must be sent by express or freight.



# Insecticides, Sprayers, Etc.

Poisonous Insecticides CANNOT be Sent by Mail—Express Only.



**RED ARROW.** Pyrethrum and coconut oil soap. Very effective. Red Arrow kills all garden pests, plant lice, red spiders, mealy bugs, etc. Absolutely non-poisonous and therefore harmless to human beings, domestic pets and birds. Easily applied. Simply mix with water. No soap needed. 1-ounce bottle makes 8 gallons.

Postpaid prices, 1-oz. bottle, 35c; ¼-pt. can, \$1.75; 1-pt. can, \$3.25.

**TOBACCO DUST.** Kills green and black lice, beetles, fleas, etc. Dust the plants with it. Lb., 10c; 10 lbs., 75c; 25 lbs., \$1.25; 100 lbs., \$4.00.

**PARIS GREEN.** ½ lb., 35c; lb., 60c.

**INSECT POWDER GUN.** Holds about 3 ounces of powder. 15c each; 3 for 35c.

**CARBON DISULPHIDE.** For ants and cut worms, also for killing weevil in grain. Will not injure grain. 1 lb., 30c; 5 lbs., \$1.10.

**MILDEW DUST.** Carbonated Lime and Sulphur. An excellent preventive of Mildew, wilt and fungous diseases on roses, asters, tomatoes, grapes, melons, etc. 4 ozs., 10c; lb., 30c; 5 lbs., \$1.00, postpaid.

**EUREKA MOLE EXTERMINATOR.** Kills moles instantly—guaranteed. Price, 50c per can.

**TERRO ANT KILLER.** Guaranteed to rid any place of ants in 24 hours or money refunded. Full directions with each package. 50c per bottle. Not mailable.

**TERRO RAT EXTERMINATOR.** Will exterminate rats, mice and gophers from your premises in a safe, sane and sanitary manner. It mummifies them. No matter where they die, they simply DRY UP. Positively do not smell. Terro Rat Exterminator is a new scientific discovery, and without a doubt the greatest rat destroyer in the world. The only one that kills rats without any bad, dangerous or disagreeable effects. A trial will convince you. 50c per can, postpaid.

**TERRO ROACH KILLER.** (Non-poisonous). Is sold on a positive guarantee to rid your premises of roaches and water bugs or money refunded. Printed directions on each package. Price, pkg., 35c; larger size for hotels, restaurants, etc., \$1.00.

**GRAPE AND ROSE DUST.** Black Spot and Mildew on Roses, Powdery Mildew on Grapes and Flowers, Blights, Leaf-eating Insects all vanish after the use of Grape and Rose Dust. Grape and Rose Dust is safe to use—will not harm any pet or human. It is easy to use—simply dust it on. ½ lb., 20c; 1 lb., 35c; 5 lbs., \$1.00.

**NIKOTEEN.** (30 per cent). An economical and powerful nicotine extract. Death to aphid or green fly, spider, mealy bug, thrip, and many other forms of flower, fruit and vegetable lice. Small bottles, 30c and 50c; ½ lb., \$1.25; lb., \$2.25. Full directions on each bottle.

**SLUG SHOT.** Kills the currant worms, potato bug, cabbage worm, slugs on roses, caterpillars, aphid on roses, bugs on melons and bugs on asters, cut worms, sow bugs, lice on fowls, curculio on plum, tobacco worms, etc. Lb., 20c; 2 lbs., 35c; 5 lbs., 60c; 10 lbs., \$1.10.



## Dry Lime-Sulphur

For dormant spray use 12 to 15 lbs. to each 50 gals. of water. For Summer spray, 3 to 4 lbs. to each 50 gals. of water.

Lime-Sulphur Powder. Lb., 35c; 5 lbs., \$1.20; 12½ lbs., \$1.90.

Lime-Sulphur Solution. Qt., 50c; gal., \$1.00; 5 gals., \$4.50; 10 gals., \$8.50.

## Arsenate of Lead

(Dry). For dusting and spraying. Solves the problem of controlling practically all leaf-eating insects in an efficient manner. 1 lb., 30c; 4 lbs., 95c.

## Bordeaux Mixture

(Dry). The best fungicide for curing and preventing black rot, mildew, blight, leaf curl, scab or other fungoid diseases on fruits and plants. 1 lb. will make 5 gallons liquid. Lb., 30c; 4 lbs., 95c.

## Acme All-Around Spray

The latest improvement in the insecticide field, one product which will combat blight and fungous diseases, control sucking insects and destroy chewing insects in one application; safe to use on almost all fruits, vegetables, flowers and shrubs. Per ¼ lb., 45c; 1 lb., 95c.



## Sulphate of Iron

A remedy for weeds on lawns, kills dandelions without injuring grass. Apply liquid with a fine spray. Particulars on application. 5 lbs., 45c; 10 lbs., 80c; 25 lbs., \$1.45; 50 lbs., \$2.25; 100 lbs., \$3.50.

**SODIUM FLUORIDE (95-97% Pure).** Used to control cockroaches and ants. We supply the finely powdered, commercial pure Sodium Fluoride in one-pound sifter top cartons and in barrels. Lb., 30c.

**ARCHIAS' STOCK DIP (Creosote Oil).** For use diluted with seventy-six parts of water. Gives a uniform white emulsion, always dependable. 1-gal. cans, \$1.00; 5-gal. cans, \$4.00.

## Black Leaf 40



is a solution of Nicotine Sulphate. It is highly recommended by Experiment Stations throughout the United States as a spray for soft bodied sucking insects. For spraying only. Directions must be followed carefully. 1-oz. bottle, 35c; 5-oz. bottle, \$1.00, (makes 40 to 100 gallons); 1 lb., \$2.25; 2-lb. can, \$3.35, (makes 200 to 500 gallons).

## CYANOOGAS

**A., DUST.** Kills rats, moles, and other rodents. ½ lb., 45c; lb., 75c; 5 lbs., \$3.00; 25 lbs., \$10.00; 100 lbs., \$30.00.

**G., FUMIGANT.** Valuable for greenhouse and soil-fumigation. Destroys aphid, white-fly, soft scale, thrip, etc. 5 lbs., \$3.00; 25 lbs., \$10.00; 100 lbs., \$30.00.



## The Auto Spray

Eight to ten strokes of plunger in air chamber compresses enough air to discharge entire contents, making continuous spray for nine minutes. "Auto Spray" is improved by addition of the "Auto Pop" shown in illustration. Capacity, 4 gals.

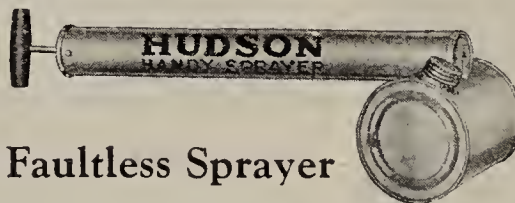
Price, galvanized iron reservoir, with "Auto Pop," \$6.50. Solid brass reservoir, with "Auto Pop," \$9.00.

Extension rods, 2-foot lengths, 50c. Two row attachment, \$1.50.

A COMPLETE LINE OF SPRAYERS, DUSTERS, GARDEN TOOLS AND OTHER SUPPLIES CARRIED AT ALL TIMES AT OUR SEDALIA STORE.

## Hudson Compressed Air Sprayer

Knapsack pattern, galvanized tank, 4-gal. capacity; high pressure, quick-acting; fitted with universal thread; with 12-inch brass extension. Automatic shut-off nozzle. Weighs 12 lbs. \$6.00. With brass tank, \$8.50. Either, by mail, 50c extra.



## Hudson Faultless Sprayer

Capacity, 1 quart. The best sprayer made. Throws a spray as fine as mist, rendering the use of strong solutions safe on tender foliage plants. (See cut). Price, 40c, postpaid.

## Star Force and Spraying Pump

Throws a stream 40 feet and makes a spray as fine as mist, all with one nozzle. Has no equal for spraying trees, flowers, lawns, gardens or bath houses. Spray your cattle, hog or poultry houses with it. Pumps from any pail or bucket.

The "Star" is all solid brass except handle, foot and hose. Has double-acting piston. Agitator at bottom. Has non-clogging spraying device. Price, only \$3.75. Postpaid, for \$3.95.

## Hudson Cadet Duster



Useful for dusting all insect powders. Because of its size and efficiency it is a favorite with housewives for applying roach and various bug powders. Made of heavy tin and well constructed. Each, 50c.

## Hudson Powder Duster, Major 665A

Is fitted for all powder dusting, especially Cyanogas, Carbola and Nicotine powders. Short discharge tube about 2 inches, another 12 inches, and a rubber hose extension. Price, all complete, \$1.25.





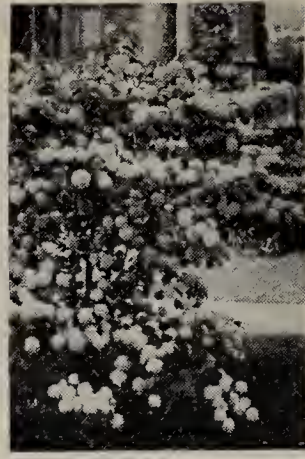
Butterfly Bush.



Althea—Rose of Sharon.



Crimson Spirea.



Snowball.



Honeysuckle.

# 14 Most Popular Flowering Shrubs

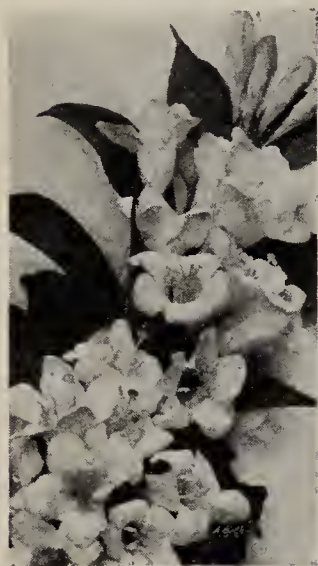
Archias' quality at greatly reduced prices. It pays to plant shrubs of the highest quality. Now is the time to plant when you can buy the finest at Bargain Prices.

Althea or Rose of Sharon. Pink, white, and red.  
Butterfly Bush (Buddleia).  
Forsythia (Golden Bell).  
Cydonia Japonica (Japan Quince or Firebush).  
Honeysuckle Bush. Pink and red.  
Hydrangea (Hills of Snow). White.  
Lilac. Purple and white.

Pussy Willow.  
Spirea. Crimson.  
Snowball. Japanese.  
Syringa (Mock Orange). Coronarius. White. Fragrant.  
Virginal. Double white, enormous blossoms.  
Tamarix. Pink.  
Weigela. Red and pink.

Your choice of these 14 large, 2-year, field-grown, 18-24 inch heavy stock. Most all varieties will bloom the first season. **25c each** 3 for 65c; 10 for \$2.00.

Postage: Each, 7c; three, 15c; ten, 25c.



Weigela.



Clematis Jackmani.



Silver Lace Vine.

## Hardy Climbing Vines

Extra Strong 2-year Plants—All varieties except where marked—25c each; 5 for \$1.00. Mailed Free.  
**AMPELOPSIS ENGELMANNI.** A greatly improved variety of the Virginia Creeper with dense foliage of glossy green changing to brilliant crimson in autumn.  
**AMPELOPSIS VEITCHI** (Boston Ivy). The most popular clinging vine—for covering brick, stone or wooden walls.  
**CLEMATIS, Paniculata.** One of the finest climbers, deliciously fragrant white flowers—in profusion during August and September.  
**CLEMATIS JACKMANI.** Large flowers of rich purple, the finest of large flowering Clematis. 75c each; 3 for \$2.00.  
**HONEYSUCKLE HECKROTTI.** Everblooming. Not a rapid climber but excellent as a ground cover. 75c each, 3 for \$2.00.  
**HONEYSUCKLE, HALL'S JAPAN.** White and yellow, fragrant, blooms very freely.  
**HONEYSUCKLE.** Monthly, fragrant. Red and yellow flowers  
**HARDY ENGLISH IVY.** Evergreen clinging vine, excellent grave cover.  
**KUDZU VINE.** The most remarkable and rapid growing of all vines, often making 50 to 75 ft. a season. Dense shade for porches, arbors, fences and trees.  
**SILVER LACE VINE** (Polygonum). The newest and most popular vine—graceful, strong, producing a mass of great foamy sprays of white flowers through the summer and fall. 35c each; 3 for \$1.00.  
**WISTERIA, Sinensis.** Chinese purple, noted for its beautiful drooping racemes of violet flowers.  
**WISTERIA, Sinensis.** Chinese white.

**4 Easily Grown Hardy Vines** 1 Wisteria 1 Honeysuckle 1 Hardy Japanese Kudzu Vine 1 Clematis paniculata **for only 98c**

## Archias' Water Garden Plants

### WATER LILIES

**ODORATA.** Hardy, sweet-scented white Water Lily. Each, 50c; 5 for \$2.00.  
**MEXICANA.** Large, beautiful yellow flower with dark green leaves. Hardy. Each, \$1.00; 5 for \$4.00.  
**TUBEROSA ROSEA.** Exquisite, light blush pink; very desirable. Hardy. Each, \$1.50; 5 for \$6.00.  
**JAS. BRYDON.** Best early hardy red. Flowers large, brilliant, good bloomers. Each, \$2.00; 3 for \$5.00.  
**WATER HYACINTH.** Best plant for fish to spawn in. Elegant clusters of light blue hyacinth flowers. Each, 25c; 5 for \$1.00.  
**CYPERUS.** Well known Umbrella plant with palm-like foliage. Each, 15c; 5 for 50c.  
**CABOMBA.** Grows entirely under water, valuable for both pools and aquariums. Bunch, 15c; 5 for 50c.  
**PARROT'S FEATHER.** A species of Myriophyllum. Long feathery foliage. Bunch, 15c; 5 for 50c.

## Hydrangea P. G. Pink Flowering

### BARGAIN OFFER

Extra heavy 2-year, 18 to 24-inch size shrubs that were loaded with blooms in our nurseries last summer—and sure to bloom for you. The Hydrangea is a conspicuous, showy shrub, producing enormous bloom. Clusters often a foot long during July and August. The flowers open a pure white—turning to a beautiful pink.

### ARCHIAS' BARGAIN PRICES

18 to 24-inch, 2-year stock, 25c each; 5 for \$1.00; 12 for \$2.15.  
Postage: Each, 7c; 5, 15c; 10, 25c.



Pink Hydrangea.

## Japanese Barberry

Dark green, very graceful shrub, for bordering your foundation plantings, to protect Evergreens, and unexcelled for hedging. Its thorns prevent trespassing. Pretty red berries all winter.

### NEW LOW PRICES

	Each	10	100
15 to 18 inches	\$0.25	\$2.00	\$12.50
18 to 24 inches	.35	2.75	15.00

## Red-Leaf Barberry

Same habit as above only the leaves are of a beautiful red color—very striking, planted among Evergreens and your foundation shrubs.

### LOWEST PRICES OFFERED

	Each	10
15 to 18 inches	\$0.35	\$3.00
18 to 24 inches	.50	4.50

## Spirea Van Houttei

We have ten thousand surplus Spirea to move quickly—Archias' quality Spirea at prices never before offered. Send your orders early. 100 big 2-year bushes, \$6.00.

Select, 2-year, 18 to 24-in. size, well branched: 15c each; 10 for \$1.00; 25 for \$2.00; 100 for \$6.00.

Also 3-year, extra heavy, 25c each; 5 for \$1.00; 10 for \$1.85; 50 for \$7.50.

Postage: Each, 7c; 10, 15c; 25, 24c; 100, 50c.



Spirea Van Houttei.



# Archias' Hardy Perennial Plants

All perennials are strong, field-grown plants with the exception of a few which are pot-grown. All varieties in this list, except where otherwise quoted, 25c each; \$1.00 per 5; \$2.00 per doz.; \$16.00 per 100, postpaid.

## ACHILLEA

**PTARMICA, BOULE DE NEIGE** (Ball of Snow). An improved Pearl with fuller and more perfect flowers. Fine for cutting. 1½ feet. June to September.

**MILLEFOLIUM ROSEUM** (Rosy Milfoil). July to October. Rosy pink flowers in dense heads, on stems 18 inches high. Effective on edge of shrubbery or in border. 3 for 50c; 12 for \$1.50, postpaid.

## ALYSSUM

**SAXATILE COMPACTUM**. Broad masses of bright yellow flowers in early spring. Excellent for rocky or front of borders. 1 foot. 3 for 50c; 12 for \$1.50, postpaid.

## ANCHUSA

**ITALICA, DROPMORE**. Gentian-blue; pyramidal spikes. 4 to 5 feet. June.

## AQUILEGIA

**COERULEA** (Rocky Mountain Columbine). Blue and white; long spurs. 1½ feet. May-June.

**COERULEA, LONG-SPURRED HYBRIDS**. A magnificent strain of the choicest Columbines. 2½ to 3 feet. May-June. 3 for 50c; 12 for \$1.50, postpaid.

## HARDY ASTERS

(Michaelmas Daisy or Starwort)

Among the showiest of our late flowering hardy plants, giving a wealth of bloom during September and October. 3 for 50c; 12 for \$1.50, postpaid.

## CAMPANULA (Canterbury Bells)

18 to 24 inches high; flowers produced freely during June and July.

**MIXED COLORS**. 3 plants for 60c; \$1.75 per doz., postpaid.

**CALYCANTHEMA** (Cup and Saucer Canterbury Bells). Choice hybrids. 2 to 3 feet. June.

## CARNATIONS (Hardy Grenadin)

We have a nice stock of these free-flowering, fragrant garden Carnations. With a little protection they are hardy everywhere. Flowers are large.

**MIXED COLORS**. 3 for 50c; 12 for \$1.50.

## COREOPSIS

**LANCEOLATA**. Golden yellow. 2 feet. June-October.

**GRANDIFLORA**. One of the most popular hardy plants. The flowers are a rich golden yellow, of graceful form and invaluable for cutting; bloom during the entire summer and autumn. 30c per 3; \$1.00 per doz., postpaid.

## CHRYSANTHEMUMS

**GLORY OF SEVEN OAKS**. Everblooming hardy "mum." Brilliant clear yellow. Earliest and longest season.

**PETIT LOUIS**. Tall growing, beautiful rose-pink color with mauve center. Very attractive.

**NORMANDIE**. Large flowering, creamy white. Very early and free flowering.

**BOSTON BRONZE**. Wonderful satin bronze color.

**INDIAN**. Soft red, flowers beautiful shade, good size.

Price, any variety: Any three for 50c; \$1.75 per doz., postpaid.

## DELPHINIUMS

**GOLD MEDAL HYBRIDS**. Hardy. Grows 24 to 60 inches. Plant in sunny location. Blooms June to September. One of the most popular, attractive and meritorious hardy border plants. "Gold Medal Hybrids" represent selected varieties. Nice young plants, 30c each; 75c per 3; \$1.50 per 6; \$2.50 per doz.

**BELLADONNA**. The clear turquoise blue of its flowers is unequalled. 3 for 50c; \$1.75 per doz.

**BELLAMOSUM**. This is a dark blue form of the popular light blue Belladonna, with which it is identical in freedom of bloom and other good qualities but with intensely rich, deep blue flowers. 50c per 3; \$1.75 per doz.

## DIANTHUS

**PLUMARIUS** (June Pinks). Spicy fragrance. 1 foot. May-June.

## DIELYTRA

**SPECTABILIS** (Bleeding Heart). 1½ feet. April-June. 75c each; \$7.50 per doz.

## DIGITALIS

**GLOXINIAEFLOA, THE SHIRLEY** (Giant Foxglove). (New). Many new colors. 6 to 7 feet. June-July.

## FUNKIA

**UNDULATA VARIEGATA**. Creamy white foliage marked with bright green. Light blue flowers. 30c each; 3 for 75c; \$2.50 per doz.

**SUBCORDATA**. Magnificent for shaded or semi-shaded locations, bearing large white flowers during the summer. 2 feet tall. Showy leaves. 35c each; 3 for \$1.00; \$3.00 per doz.

## GAILLARDIA

**GRANDIFLORA HYBRIDS**. Yellow and orange-red; very brilliant. 1½ feet. May-November. 3 for 40c; 12 for \$1.25, postpaid.

## GEUM

**MRS. BRADSHAW**. Double; orange-red. 2 feet. June-September.

## GOLDEN GLOW (Rudbeckia)

4 to 7 feet. Produces numerous stems laden with double golden yellow flowers, lasting well when cut. 3 for 50c; 12 for \$1.50, postpaid.

## GYPSOPHILA

**PANICULATA** (Baby's Breath). Grayish white. 2 to 3 feet. June-July.

## HARDY HIBISCUS

**NEW GIANT FLOWERING** (Mallow Marveis). Enormous flowers frequently 10 to 12 inches in diameter. Thrive in dry or wet ground. Perfectly hardy. In separate colors, Red, Pink and White.

## HOLLYHOCKS

**SINGLE MIXED**. Splendid color range. 5 to 7 feet. July-September.

**DOUBLE, CHATER'S FINEST**. White, Pink, Yellow and Crimson. 5 to 7 feet. July-September.

## MYOSOTIS

**PALUSTRIS SEMPERFLORENS** (Everblooming Forget-me-not). Bright blue. June to October).

## ARCHIAS' PROFUSE FLOWERING

### HARDY PHLOX

Price: Nice, 1-year, field-grown plants, 25c each; 5 for \$1.00; \$2.00 per dozen.

**JULES SANDEAU**. (Medium). Lively salmon-pink, light center.

**R. P. STRUTHERS**. (Tall). Bright rosy red, ciaret-red eye.

**RHEINLANDER**. (Medium). Beautiful salmon-pink, deep red eye.

**THOR**. (Medium). Soft ruddy salmon with mottled center.

**MRS. JENKINS**. The best all-around pure white. Very effective for massing; early and free bloomer.

**PANTHEON**. A variety medium in height. Color bright salmon-pink with lighter shadings and dark crimson eye.

## POPPY

**ORIENTAL**. Nothing can equal these Poppies during their period of flowering for a gorgeous display of a rich, brilliant coloring. Each, 25c; 3 for 70c; doz., \$2.50, postpaid.

## PLATYCODON

**GRANDIFLORA** (Saucer Flower). Blue or white, balloon-shaped buds; most attractive. 1½ feet. June-July.

## PYRETHRUM

**HYBRIDUM** (Colored Daisies). Mixed. 2 feet. June-July.

## SALVIA, HARDY BLUE

**AZUREA**. A Rock Mountain species, 3 to 4 feet high, producing during August and September, pretty sky-blue flowers in the greatest profusion. Plants, 2 for 25c; 12 for \$1.00, postpaid.

## SEDUM

**SPECTABILIS BRILLIANT**. A new variety having flowers of a bright shade of deep crimson.

**SPURIUM COCCINEUM**. 6 inches. 1-inch leaves on creeping branches; crimson flowers on red stems. 20c each.

**KAMTSCHATICUM**. Orange-yellow flowers, with prostrate, green foliage, turning golden in autumn.

All varieties, 3 for 55c; \$1.75 per doz.

## SHASTA DAISY

**ALASKA**. A decided improvement. Pure glistening white. 1½ feet. June-September. 3 for 50c; 12 for \$1.50, postpaid.

## STATICE (Great Sea Lavender)

**LATIFOLIA**. Large, spreading panicles of light, graceful, deep blue flowers; prized for winter decoration, dried.

## SWEET WILLIAM (Dianthus Barbatus)

**DOUBLE MIXED**. A well known, attractive, free-flowering hardy perennial, producing in early summer a splendid effect in beds and borders. All colors. 20c each; 3 for 50c; \$1.75 per doz.

## TRITOMA (Flame Flower)

Grows 2 to 4 feet in sunny location. The flower spikes are of gigantic size, frequently 4½ feet high, with heads of blooms over 12 inches long, from July to October, of rich orange-scarlet shading to salmon-rose. Nice plants.

## VERONICA

**BLUE RIDGE**. Bright blue; handsome spikes. 2 feet. July-September. 3 for 50c; 12 for \$1.50, postpaid.

## VINCA

**MINOR** (Myrtle). Blue flowers. Splendid for shade; grows anywhere. 6 inches. April-May.

## YUCCA

**FILAMENTOSA** (Adam's Needle). Of tropical appearance; large pyramidal clusters of creamy flowers. 4 to 6 feet. June-July.



*Alyssum.*



*Columbine.*



*Aster.*



*Campanula.*



*Coreopsis.*



*Digitalis.*

## Collection of Hardy Perennial Plants

For customers who are not acquainted with the various varieties, we offer the following collections, in varieties strictly of our selection, in good, strong roots, that will, with little care, keep the garden gay with flowers from the time frost leaves the ground until late in autumn.

12 plants, assorted, our selection, postpaid. \$1.25  
25 plants, assorted, our selection, postpaid. 2.25  
50 plants, assorted, our selection, postpaid. 4.00  
100 plants, assorted, our selection, postpaid. 7.50



# BARGAIN PRICES on Archias'

These trees and plants have thriftiness and vitality grown into them, carefully preserved by proper handling and are delivered to you in A-1 condition.  
 We guarantee all trees and plants to be true-to-name, but in no event do we stand liable for more than the purchase price.



Archias' Missouri Pride Peach.



Delicious Apple.



Early Richmond Cherries.

## Archias' Missouri Pride Peach THE WORLD'S BEST PEACH

Resembles Elberta in color and flavor but tree is hardier; a strong grower and productive.

Most delicious flavor, seldom found in a yellow peach. Far surpasses Elberta.

Price of Archias' Missouri Pride, 2-yr.-old extra choice trees, each, 50c; 3 for \$1.35; 10 for \$3.75. Order early.

## Other Good Peaches

Every garden should contain a few peaches—no fruit is more luscious and pleasing than a ripe, juicy peach. Plant 16 feet apart; mulch in spring.

Fill your fruit jars with Home Grown Peaches.

### VARIETIES

Midseason: Champion, Belle of Georgia, J. H. Hale, Elberta.

Late: Crosby, Late Elberta, Heath Cling.

If you could only compare stock when you compare prices you would appreciate more the extraordinary values we offer.

	Each	3	10
4 to 5 ft. ....	\$0.35	\$1.00	\$3.00

## Apples

Summer: Maiden's Blush, Yellow Transparent, Early Harvest and Crab Apple.

Fall: Jonathan, Grimes Golden, King David.

Winter: Delicious, Stayman, Yellow Delicious, Red Delicious, Winesap, York Imperial, Rome Beauty.

Prices, all except Yellow Delicious and Red Delicious.

	Each	3	10
2 yr., 5 to 6 ft., well branched .....	\$0.35	\$1.00	\$3.00
Yellow Delicious and Red Delicious .....	.65	1.75	5.00

## Pears

Bartlett, Seckel, Lincoln, Kieffer

	Each	3	10
2 yr., 4 to 6 ft., branched .....	\$0.50	\$1.35	\$3.75

You are buying production, not trees. The best is the cheapest in the long run.

## Plums

Bear abundantly at an early age.

Waneta, Sapa, Opata, Abundance, Shropshire Damson, Wild Goose, German Prune.

	Each	3	10
4 to 5 ft. ....	\$0.50	\$1.35	\$3.75

Though our prices are reasonable we offer only quality stock.

## Cherries

### VARIETIES

Early Richmond, Montmorency; midseason, highest quality. English Morello, late.

	Each	3	10
Well branched, 3½ to 4½ ft. ....	\$0.50	\$1.35	\$3.75

Archias' reputation of 48 years of square dealing is back of your purchase.

## Protect Your Trees

Worth Planting, Worth Saving

ARCHIAS' VENEERED TREE PROTECTORS are made from wood veneer 10 inches wide and 20 inches long. Prevents sun scalding and blistering, and keeps off rabbits, mice and all kinds of tree gnawers; easily put on, and big enough to protect as long as protection is needed. (100 protectors weigh 30 lbs.).

Prices: 25 for 50c; 50 for 85c; 100 for \$1.50.

## Archias' Prolific Currants

We have a fine supply of heavily rooted, vigorous, disease-free, two-year plants and have priced them very low.

No garden is complete without them. Easy to grow and sure to bear. Our list comprises only the very best in cultivation. Plant 3x6 feet. Use Arsenate of Lead or Slug Shot for worms.

FAY'S PROLIFIC. The leading red market variety.

RED DUTCH. The old, well known red Currant.

WHITE GRAPE. Very productive; excellent quality.

Price: Any of the above varieties, 2-year-old, 3 for 50c; 10 for \$1.50, prepaid.

PERFECTION CURRANT. Color a beautiful bright red; a great bearer, with rich, sub-acid flavor, plenty of pulp and a few seeds. Best Currant lately introduced. Won the gold medal of the Western New York Horticultural Society in competition with all the old leading varieties; also gold medal at St. Louis World's Fair. 3 for 65c; 6 for \$1.00; 10 for \$1.50.

All Blackberries, Raspberries, Currants, Gooseberries and Dewberries are postpaid or express prepaid in zones 1, 2, 3 and 4; zones beyond add 10 per cent for postage.



# Selected Fruit Trees, Vines and Berries

## Archias' Delicious Table Grapes

Every home should have a dozen or more Grape vines planted on an arbor or along the garden fence. They are delicious to eat fresh from the vines; can be made into the most health producing grape juice; and jelly—well who doesn't like grape jelly? Once planted the Grape vines will continue to yield for years with practically no special attention. Our Grapes are strong, well rooted plants that are sure to grow for you.

**BRIGHTON.** One of the best red grapes in cultivation. Bunches large and compact. Very productive.

**CACO.** Considered the largest, sweetest and most prolific hardy red grape. Plant plenty of Caco; you'll like it. Prices on large 2-yr. vines: Each, 30c; 4 for \$1.00; 10 for \$2.25, postpaid.

**CONCORD.** Favorite black grapes. Does well wherever planted. Large and productive.

**MOORE'S EARLY.** Good yielder, large berry. A valuable early, hardy black grape.

**NIAGARA.** Standard white. Fruit large and productive. Fine quality.

**WORDEN.** A splendid blue grape, ripening ahead of Concord. Vigorous and hardy.

### Prepaid Prices

Strong 2-year Vines.

	Each	3	10	25
Concord	\$0.15	\$0.35	\$1.00	\$2.00
Moore's Early	.15	.35	1.00	2.00
Worden	.15	.35	1.00	2.00
Niagara	.15	.35	1.00	2.00
Brighton	.20	.50	1.25	2.50

## Golden Jubilee Collection

of  
Table  
Grapes

10 Concord      3 Worden      3 Niagara  
3 Moore's Early   3 Brighton   3 Caco

25 VINES  
2-year-old, as above  
POSTPAID

**\$2.50**

## Gooseberries

Gooseberries like a cool, moist loam in partial shade, and good mulch. Gooseberries are one of the most useful of all small fruits for the middle western territory.

**DOWNING.** Downing is a large, handsome, pale green berry and of splendid quality. Good for both cooking and table use. No. 1, strong plants, 3 for 50c; \$1.50 per doz.

**HOUGHTON.** Medium, rounding oval. Pale red, very sweet and tender. Prolific. This berry does not mildew. No. 1, strong plants, 3 for 50c; \$1.50 per doz.



Brighton Red Grapes.

## Latham Red Raspberry

Yields Twice as Much as Other Red Raspberries.

This is the greatest Red Raspberry of all time. Thrives everywhere and is an enormous producer of extra large, dark red, delicious berries. Price: Select, 1-year plants, 12 for 75c; 25 for \$1.10; 50 for \$1.75; 100 for \$3.00, postpaid.

## St. Regis Red Raspberry

An everbearing red Raspberry that bears heavily throughout the summer and fall. Price: Select, 1-year plants, 12 for 75c; 25 for \$1.10; 50 for \$1.75; 100 for \$2.95, postpaid.

## Cumberland Black Raspberry

World's most popular and profitable Blackcap. You can depend on a heavy crop regularly if you plant our improved strain of Cumberland. Does well in all soils. Best Blackcap for all purposes. 12 for 50c; 25 for 90c; 100 for \$2.50, postpaid.

## Blackberries

Eldorado and Early Harvest ..... 12 25 100  
\$0.60 \$1.00 \$3.10

**ELDORADO.** One of the very hardiest and best. Berries jet black, sweet, with pleasing taste. Keep well, ship well, and sell well, and are very productive.

**EARLY HARVEST.** The old standby, very early, dwarf grower. Does well in Missouri, Kansas and Oklahoma.

## Delicious New Youngberry

The berry that has created a sensation wherever grown. Offspring of the Dewberry and Loganberry. Produces an abundance of mammoth, rich flavored, wine-purple colored berries, many measuring 1½ inches long. Delicious for table use, pies, canning, etc. Berries sell at a fancy price. Price: 1-year, No. 1 plants, 12 for \$1.00; 25 for \$1.75; 50 for \$2.75; 100 for \$5.00, postpaid.

## Mastodon Everbearing Strawberries

This new everbearer has proven itself to be all that has been claimed for it. You have read some apparently extravagant stories about it. The results you will get from it will prove they are true. Mastodon will produce three large crops within 18 months after planting and big, fine berries, too. Try a patch this year—you will be pleasantly surprised. 25 plants, 50c; 50 for 90c; 100 for \$1.60; 300 for \$4.00, postpaid.

## Washington Strawberry

Extra Late Perfect.

The "Honey Sweet" berry with a future. A heavy producer of extra large, dark varnished red berries, super quality and "honey sweet" flavor. Price: 25 plants for 50c; 50 for 85c; 100 for \$1.50; 300 for \$3.75, postpaid.

## Standard Strawberries

Our list of Strawberries now consists entirely of perfect-flowering sorts. They will yield their big crops with a minimum of trouble to the grower.

**BLAKEMORE** (Extra Early). A new early, good sized, extra firm berry, bright red color. Thrives on poor soil. Ships well. 25 for 40c; 50 for 60c; 100 for 90c; 300 for \$2.50, postpaid.

**KELLOGG'S PREMIER** (Extra Early). The prize winning, money-making frost-proof Strawberry; hardy, productive, and beautiful. Succeeds everywhere, never fails to give a big crop of big, choice berries. The most popular extra early variety on record.

**SENATOR DUNLAP** (Medium Late). An old reliable, large size strawberry that will produce big crops on all soils. Popular for home and shipping.

**AROMA** (Late). A favorite market variety in Missouri, Tennessee, Arkansas, etc. Medium to large, bright red, yields well. Prices (except Blakemore): 25 for 35c; 100 for 85c; 200 for \$1.50; 500 for \$2.50; 1000 for \$4.00, postpaid.



Mastodon—  
King of the Everbearers.

## Directions for Planting Strawberries

For small gardens, plant 12x30 inches apart. For field culture, plant 1½x3 feet, requiring 8,000 plants per acre. Well drained, rich soil. Fertilize with Vigoro or Vegetable Special Fertilizer. Do not use stable manure as it will attract grubs and cut worms. Mulch in fall.



# BIRDS and BIRD SUPPLIES



## Bird Cages and Supplies

**BARGAIN IN BIRD CAGES**  
A New Home for the Birdie  
**NEW DESIGN CAGE AND STAND,**  
\$2.50.

Complete with perches, cups, and guards. Beautifully Ducoed.

Other styles \$3.50 up; Cages only \$1.25, \$1.50 and up.

## Cage Brackets and Springs

**BRACKET.** Brass, 12-inch. Each, 20c, postpaid.  
**CAGE SPRINGS.** Single heavy brass with chain. Each, 20c, postpaid.  
**CAGE SPRINGS.** Short. Each, 10c, postpaid.

## Breeding Cages

	Long	Wide	High	
No. 86.	19 1/2 in.	10 in.	14 3/4 in.	\$5.75
No. 87.	22 in.	11 in.	16 1/4 in.	6.50
No. 88.	24 1/2 in.	12 1/2 in.	17 in.	7.25

**SEED CUPS.** 10c, postpaid.  
**BATH DISHES.** 15c, postpaid.

## Bird Requisites

If wanted by mail, add postage at zone rate.

- CUTTLEFISH BONE.** Oz., 5c; lb., 45c.
- BIRD MANNA.** Great moulting season food; birds are very fond of it; a feed and a medicine combined. Pkg., 15c; 2 for 25c, postpaid.
- BIRD BITTERS.** Bottle, 25c; postpaid, 35c.
- BIRD MANNA.** Great moulting season food; birds are very fond of it; a feed and a medicine combined. Pkt., 15c; 2 for 25c, postpaid.
- BIRD BITTERS.** Bottle, 25c. Postpaid, 35c.
- WHITE BIRD GRAVEL.** Pkg., 15c; 2 for 25c, postage extra.
- RED GRAVEL.** The finest and best on the market. 2-lb. pkg., 15c; 2 for 25c, postage extra.
- BIRD TONIC.** A valuable medicine for colds and other disorders of birds. Simply put it in the drinking cup. Large bottle, 35c. Postpaid, 45c.
- CAYENNE PEPPER.** Oz., 15c; 1 lb., 50c, postpaid.
- MOULTING PEPPERS.** Pkg., 25c, postpaid, 30c.
- INSECT OR MITE POWDER FOR BIRDS.** Pkg., 25c, postpaid.
- INSECT POWDER BELLOWS.** 15c each; 2 for 25c.
- NESTLING FOOD.** An egg food for young birds which will keep indefinitely, and which is cheaper than eggs. Box, 25c; 3 for 65c, postpaid.
- BIRD NESTING.** Prepared of hair moss and other material for birds to build their nests. Pkg., 15c; 3 for 35c, postpaid.
- WIRE BIRD NESTS.** 15c each; 3 for 35c, postpaid.
- HALLER'S CANARY BIRD PIE.** A treat. Pkg., 15c, postpaid.
- HALLER'S CANARY COLOR FOOD.** Pkg., 25c, postpaid.
- HALLER'S DUTCH SONG RESTORER.** Never fails. Large size pkg., 25c, postpaid.
- HALLER'S HEALTH FOOD.** A builder. Pkg., 25c, postpaid.
- COD LIVER OIL NESTLING FOOD.** Pkg., 25c.

## Archias' Health Grit

(With Charcoal)

A scientific mixture of washed and screened Bird Gravel containing Iron, Magnesia and Calcium Carbonate and Bird Charcoal. Will keep your birds healthy.

2-lb. cartons, 15c; 2 cartons for 25c; 5 cartons, 60c; 10 cartons, \$1.00, not postpaid.

## Bird Seeds

Postage extra on all Bird Seed at zone rate.

Our Bird Seed is strictly fresh and clean and our packages contain more seed than any other brand.

	Lb.	5 lbs.	10 lbs.
ARCHIAS "SURE SING" BIRD SEED (Without Hemp). A well balanced mixture of the finest seeds obtainable	\$0.15	\$0.60	\$1.00
ARCHIAS PARRAKEET AND LOVE BIRD MIXTURE. Best obtainable mixture—sure to please	.15	.60	1.00
ARCHIAS MIXED BIRD SEED. With hemp	.15	.60	1.00
HEMP SEED. Recleaned	.15	.60	1.00
MILLET. (Recleaned) imported	.15	.50	.90
CANARY. Finest Sicily	.20	.85	1.50
RAPE. Large German	.15	.60	1.00
SWEET RAPE	.15	.60	1.00
SUNFLOWER SEED. For Parrots	.15	.60	1.00
MIXED SEED. For Parrots	.15	.60	1.00

## Singing Canary Birds

A LIVE MUSIC BOX IN YOUR HOME

A joy and pleasure morning, noon and night. Our Canaries are tested and guaranteed singers.

**St. Andreasberg Rollers, Male,** \$5.50; **Female,** \$2.00.

**Hartz Mountain, Male,** \$3.00; **Female,** \$1.00.

**Chopper Canaries. Male,** \$3.50; **Female,** \$1.25.

Birds can only be shipped by express.



## High Grade Goldfish

WE HAVE SEVERAL THOUSAND ELEGANT FISH AT EXTREMELY LOW PRICES—WE LEAD THEM ALL!

Price List of Goldfish

By express only, customer paying express charges.

**CHINESE GOLDFISH.** Small size, 15c each; 6 for 75c; \$1.75 per doz. Medium size, 25c each; 3 for 65c; \$2.25 per doz. Large size, 45c to 75c each.

**JAPANESE FANTAIL FISH.** Imported Japanese fish; very handsome. Price, according to shape and color, 50c to 75c each. Some extra choice. 75c to \$1.25 each.

**TADPOLES.** Used to keep water pure. 10c each; 3 for 25c.

## Fish Food

- ARCHIAS WAFER FISH FOOD.** Pkg., 10c; 3 for 25c, postpaid.
- ARCHIAS' NATURAL FISH FOOD.** For outdoor pools. Pkg., 10c; 3-oz. pkg., 15c; 6-oz. pkg., 25c; 12-oz. pkg., 45c, postpaid.
- ARCHIAS' TROPICAL FISH FOOD.** Pkg., 10c; 3 for 25c, postpaid.
- ARCHIAS TURTLE FOOD.** For baby turtles. Pkg., 15c; 2 for 25c, postpaid.

## Fish Globes

One quart, 15c; 2 qts., 30c; 4 qts., 50c; 8 qts., 95c; 12 qts., \$1.50. Squat Fish Globes at same price.

The above globes are made of the best glass and in elegant designs.

## Dog and Cat Food and Supplies

Postage Extra if by Mail.

- SPRATT'S FIBO—An Appetizing Granulated Food.** For puppies or growing dogs, shy feeders or those recovering from sickness, or as a change of food at any time for all dogs. 2-lb. carton, 45c; 5-lb. carton, 90c.
- SPRATT'S OVALS—The Pocket Dog Biscuit.** A small Meat-Fibrine Dog Biscuit, suitable as a staple diet for small dogs and toys. 1 lb., 20c; 2 lbs., 35c; 5 lbs., 85c.
- SPRATT'S CAT FOOD.** A complete food for cats. Used at the leading catteries throughout the world and daily becoming more popular among the fancy. 24-oz. carton, 35c; 5-lb. carton, 85c.
- SPRATT'S DOG SOAP.** Kills fleas, prevents mange and other skin diseases. Used in preparing dogs for exhibition. It leaves the coat smooth and glossy. 25c per cake, by mail.
- SPRATT'S MEAT "FIBRINE" VEGETABLE DOG CAKES.** The standard dog food. Used at the leading kennels and dog shows throughout the world. A staple and constant food for all breeds of dogs. 1 lb., 20c; 2 lbs., 35c; 5 lbs., 85c.
- SPRATT'S FLEA POWDER** (large can), 35c.
- SPRATT'S FLEA SOAP.** Guaranteed. Per cake, 25c.
- SPRATT'S WORM CAPSULES.** For puppies. 50c.
- SPRATT'S TAPEWORM TABLETS.** 60c.
- SPRATT'S CAPSULES for Large Round Worms.** 60c.
- SPRATT'S DISTEMPER TABLETS.** 75c.
- CATNIP MICE—Exercising Toys for Cats.** They can't let it alone, ridiculously amusing; positively beneficial; will last a lifetime. Catnip and other herbs. Nature's own remedy for cats. Price, complete, 10c, postpaid.
- DOG COLLARS, COMBS, CHAINS, AND LEADS, SLEEPING BASKETS, ETC.** Prices on application.

## Wonderful "P. H." Powder

Greatest Animal Conditioner and Worm Expeller. Given to animals with their food. For the prevention and cure of Distemper, Worms and all manner of Diseases in Animals. Used by the largest Kennels in this country and abroad. Price: 1 1/2-lb. can, \$1.75; 3 1/2-lb. can, \$3.50.



## Perfection Dog Food

A Balanced Meat-Cereal Food for Puppies and Grown Dogs. Endorsed and used as a dog and puppy food by the leading dog and kennel owners throughout the United States. Price, 5 lbs., 60c; 10 lbs., \$1.00; 25 lbs., \$1.50; 50 lbs., \$2.75; 100 lbs., \$5.50; 500 lbs., \$26.00.



# Archias' Poultry and Pigeon Supply Dept.

We handle only the very best, and at reasonable prices. Only supplies of known merit are here offered to our customers, and our guarantee goes with every article sold—honest goods and honest prices. This method has made Archias' "Sure Seeds" and Supplies popular the country over, and is gaining for us thousands of new friends each year.

Our terms are Cash with order. We ship promptly. We guarantee safe arrival. We get you the lowest express and freight rates. We own the **OLDEST AND BEST KNOWN SUPPLY HOUSE IN THE WEST.**

Combine your orders for supplies with your Seed orders and save freight.

## Archias' Celluloid Spir-ol Leg Bands

Are made in six colors and all sizes.  
Prices, Postpaid



12 bands for	.....	\$0.10
25 bands for	.....	.15
50 bands for	.....	.25
100 bands for	.....	.45
500 bands for	.....	2.15
1000 bands for	.....	4.00

Spir-ol Band for Chick, Bantam and Pigeon sizes as follows: 12 for 15c; 25 for 25c; 50 for 40c; 100 for 75c; 500 for \$3.75; 1000 for \$7.00.

These bands come in six colors same as poultry bands.



## Champion Leg Bands

THE BEST MADE

In Two Sizes—3 and 4 Inches Long

Made of best quality aluminum. 12 for 10c; 25 for 15c; 50 for 25c; 100 for 45c; 250 for \$1.00; 500 for \$2.00, prepaid. In ordering bands state size wanted.

**ALUMINUM PIGEON AND BANTAM BANDS.** 12 for 20c; 25 for 30c; 50 for 50c; 100 for 90c, prepaid.

**PIGEON BANDS.** Economy Double Number 12 (6 pairs), 25c; 24 (12 pairs), 45c; 100 (50 pairs), \$1.50.

## Reliable Poultry Feeds

	10-lb. Bag	25-lb. Bag	100-lb. Bag
Tankage	.....	.....	.....
Crushed Oyster Shell	.....	.....	.....
Cryscro Grit	.....	.....	.....
Bone Meal for Poultry	.....	.....	.....
Meat Meal for Poultry	.....	.....	.....
Blood Meal for Poultry	.....	.....	.....
Blatchford's Calf Meal	.....	.....	.....
Archias' Sure Hen Feed	.....	.....	.....
Archias' Sure Egg Mash	.....	.....	.....
Chick-Grit for small chicks	.....	.....	.....
Kaffir Corn for Feed	.....	.....	.....
Alfalfa Meal for Poultry	.....	.....	.....
Charcoal, granulated	.....	.....	.....

## Pigeon Supplies

	10-lb. Bag	25-lb. Bag	100-lb. Bag
Mixed Pigeon Feed	.....	.....	.....
Canada Peas for Pigeons	.....	.....	.....
Pigeon Health Grit	.....	.....	.....
American Pigeon Journal, 1 yr., \$1.00; 3 yrs., \$2.00.			

## Chinese Nest Egg

Best made; last forever. Worth ten times their cost the first season. 20c per doz.; 5 doz., 85c.

**DRINK FOUNTAINS AND FEEDERS, GRIT BOXES, THERMOMETERS, LICE KILLERS, SPRAY PUMPS, DISINFECTANTS, INCUBATOR LAMPS, AND SUPPLIES.** Prices on application.

## Baby Chicks

Blood Tested—Live Delivery Guaranteed.

We can supply promptly day-old chicks of the following popular breeds. Write for latest prices for stock, postpaid.

White Leghorns, Barred Rocks, Rhode Island Reds, Buff Orpingtons, White Wyandottes, White Rocks.

## Poultry Litter

(Imported Peat)

Poultrymen should use Peat as it is sanitary, prevents dampness, absorbs offensive odors, keeps the fowls clean and eventually makes a good fertilizer and is a real labor saver.

Note our very low prices: Original bale, f. o. b. Sedalia, \$3.50. Contains about 20 bushels, compressed.

Trial bale, about 2 bushels, \$1.00.

Trial bale, about 5 bushels, \$2.00.

## Glass Cloth - Flex-O-Glass

"Let the Violet Rays Through." Is water-proof and weather-proof, durable and cheaper than glass. Fine for chicken houses, garages, back porches, etc. Comes in rolls 36 inches wide.

LOOK FOR THIS NAME  
FLEX-O-GLASS—printed on every yard for Your Protection.  
2 YEARS SERVICE GUARANTEED



FOR POULTRY HOUSES,  
HOT BEDS,  
PORCHES,  
BARN WINDOWS

# FLEX-O-GLASS

PROVED BEST BY TEST ~ ASK YOUR NEIGHBOR.

10-yard roll, trial lot	.....	\$ 2.30
25-yard roll	.....	5.00
50-yard roll	.....	9.80
100-yard roll	.....	18.00
Cut to order, per yard	.....	.24



Germaco

## Hotkaps

NEW METHOD OF PLANT PROTECTION

HIGHER PRICES FOR YOUR CROP

This amazing New Method of Plant Protection gets you higher prices for Larger and Quicker Crops.

100 lots for	.....	\$1.50
250 lots for	.....	3.00
1000 lots for	.....	9.50
100 with setter and tamper	.....	2.40

GERMACO HOTCAP SETTERS

Germaco Garden Setter	.....	\$0.50
Germaco Steel Setter	.....	2.50

Write for interesting pamphlet or order today!

## Conkey's Buttermilk Feeds with Y-O

Conkey's Buttermilk Starting Feed. Conkey's Growing Mash. Conkey's Green Egg Mash. Prices on application.

## Rabbit Supplies

Salt-Sulphur Spools. Very necessary. 2 for 15c; doz., 50c.  
Conkey's Rabbit Ration. With Y.-O. 10 lbs., 45c; 25 lbs., 85c; 100 lbs., \$3.00.  
B.-K. Disinfectant for Rabbit Hutches. 50c and 90c per bottle.  
Sprayers for Applying Disinfectants, 25c.  
Oats for Rabbits. Market price.  
Alfalfa Hay. Market price.

## Beekeepers' Supplies

We make a specialty of the best Bee Supplies, and offer, at Factory Prices, the largest stock in the West. If interested write for catalog of Bee Keepers' Supplies, mailed free.



## Archias' Cut Flowers Floral Designs and Greenhouse Plants

We own one of the oldest, largest and most complete systems of greenhouses in Central Missouri—Specializing in the shipping of cut flowers and plants for Funerals, Weddings, Birthdays, Home and Store Decoration.

Archias' Flowers are used daily in every community within a radius of 100 miles of Sedalia—flowers at reasonable prices. Archias' guarantee with every order.

Address All Orders for Flowers to

### Archias Floral Co.

Long Distance Phone 4000.

SEDALIA, MO.

OUR BULB CATALOG WILL BE READY FOR MAILING IN SEPTEMBER—SEND FOR A COPY—FREE

# Archias Seed Store Corporation, Sedalia, Mo.

THE OLD RELIABLE SEED AND SUPPLY HOUSE THAT SAVES YOU MONEY



## Archias' Dependable Dairy Supplies



### Archias' Special Milk Bottles

#### Thatcher Quality

The very best quality flint glass, properly annealed, absolutely accurate in measurement, comply with all State Laws, easily cleaned, take regular No. 2 Milk Bottle Caps.

Size	Doz.	6 Doz.	12 Doz.
½-pint	\$0.50	\$2.40	\$4.50
1-pint	.60	2.45	5.75
1-quart	.75	4.15	8.00
½-gal.	2.25		

### Archias' Sanitary Milk Bottle Caps

Standard Caps, of best material—guaranteed. Made from the best spruce pulp and highly waxed.

No. 2 Standard. In tubes. 500 for 30c; 1000 for 55c; 5000 for \$2.25. No. 3 or Oversize. In tubes only. 500 for 35c; 1000 for 65c. Lip or Tongue Caps No. 2. In bulk only. 500 for 30c; 1000 for 55c.

Sani-Draw, Sure-Pull, Perfection Pull, E-Z Pull, Straw-Draw, Serve-All and Certified Pull Caps. With Your name printed on same free, in lots of 50,000, 100,000 and over. Ask for special prices. Can also supply above caps in 10,000 and 25,000 with your name printed on if wanted.



### Milk Bottle Cases

Best made. Electrically welded and retinned. Can also supply metal bound, wooden cases. Prices on application.

Dairy Salt, 10-pound bag	30c
Bottle Brush	45c each
Jersey Can Brush	45c each
Gong Can Brush	45c each
Floor Brush	\$1.25 each
Separator Bowl Brush	25c to 75c each
Milking Tubes	35c to 60c each
1-lb. Butter Cartons	\$1.00 per 100
Parchment Butter Paper, 1000 sheets	\$1.35

Abronia	2
Alyssum	2, 27
Ageratum	2
Amaranthus	2
Anchusa	2, 27
Antirrhinum	3
Apples	28
Asparagus	13
Asters	3, 27
Aquilegia	2, 27
Bachelor's Button	3
Balloon Vine	12
Balsam	3
Balsam Apple	12
Barley	24
Bartonia	3
Beans	14
Beets	13
Bird Supplies	30
Blackberries	29
Book of Annuals	4
Broccoli	14
Brussels Sprouts	14
Cabbage	15
Caladium	10
Calendula	3
Calliopsis	3
Canary Bird Vine	12
Candytuft	3
Cane	24
Cannas	11
Cannas, From Seed	3
Canterbury Bells	3, 27
Cauliflower	15
Cardinal Climber	12
Carnation	4, 27
Carrots	16

Celery	15
Celosia	4
Centaurea	4
Chinese Cabbage	15
Chinese Woolflower	4
Cherries	28
Chrysanthemum	4, 27
Clematis	12
Cobaea	4
Collards	15
Corn, Field	24
Corn, Pop	16
Corn, Sweet	16
Coreopsis	4, 27
Cosmos	4
Cucumbers	16
Currants	28
Cut Flowers	31
Cypress Vine	12
Dahlias	5, 11
Dairy Supplies	32
Daisies	5, 27
Datura	5
Delphinium	5, 27
Dianthus	5, 27
Didiscus	5
Digitalis	5, 27
Dog and Cat Supplies	30
Eggplant	17
Endive	17
Eschscholtzia	5
Euphorbia	5
Everlastings	6
Feterita	24

## INDEX

Fertilizers	22
Flowering Shrubs	26
Forget-me-not	6
Four O'clock	6
Gaillardia	6, 27
Garden Seeds	13-21
Gilia	6
Gladiolus	10
Godetia	6
Goldfish	30
Gooseberries	29
Gourds	12
Grapes	29
Grohomia	24
Gypsophila	6, 27
Hardy Perennial Plants	27
Hay and Pasture Grass	23
Hedge Plants	26
Herbs	17
Hollyhock	6, 27
Huckleberry	17
Hyacinth Bean	12
Insecticides	25
Kaffir Corn	24
Kale	17
Kochia	6
Kohl-rabi	17
Kudzu Vine	12
Larkspur, Annual	5
Lawn Grass Seed	22
Leek	17
Lettuce	17
Lilies	10, 11
Lobelia	6

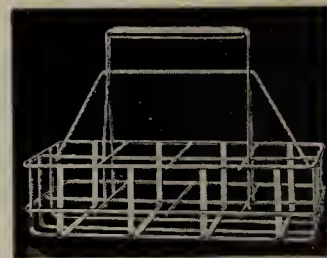
Lupinus	6
Madeira Vine	10
Mangels	13
Marigold	7
Mignonette	7
Milo Maize	24
Moonflower	12
Morning Glory	12
Mushroom Spawn	17
Muskmelon	18
Mustard	17
Nasturtium	7
Nemesia	7
Nigella	7
Nitragin	23
Okra	19
Onions	18
Pansy	7
Parsnips	19
Parsley	19
Peaches	28
Pears	28
Peas	19
Peonies	11
Peppers	19
Petunias	7
Phlox Drummondii	7
Physostegia	8
Plums	28
Poppy	8, 27
Portulaca	7
Poultry and Pigeon Supplies	31
Pumpkins	19

Pyrethrum	8, 27
Radishes	20
Raspberries	29
Rhubarb	20
Ricinus	4
Rudbeckia	8, 27
Rye	24
Salpiglossis	8
Salsify	20
Salvia	8, 27
Scabiosa	9
Scarlet Runner Bean	12
Schizanthus	9
Seeders	25
Spinach	20
Sprayers	25
Squash	20
Statice	8, 27
Stocks	8
Strawberries	29
Strawflowers	6
Sunflower	8, 23
Sweet Peas	10
Sweet William	8, 27
Thunbergia	9
Tobacco	21
Tomatoes	21
Turnips	21
Vegetable Plants	13
Verbena	9
Vines	12, 26, 29
Vinca	9, 27
Viola	9
Watermelon	18
Water Garden Plants	26
Wisteria	12
Youngberry	29
Zinnias	9

### Steel Wire Delivery Baskets

Electrically Welded and Tinned.

For carrying milk bottles. Made for six 1-quart bottles or four quart and two pint bottles. Each, \$1.10; 8-bottle carrier, 4 quarts and 4 pints, \$1.25 each.



### Milk Strainers

One piece, heavy tinned steel, absolutely sanitary. Each, \$1.75, postpaid.

### Rapid-Flo Filter Disks

Our cotton strainer pads for straining milk are made of finest sterilized absorbent cotton packed 300 to carton. Price per carton, 5½ in., \$1.05; 6 in., \$1.05; 6½ in., \$1.45, postpaid.

We also carry in stock Rapid-Flo Disks with gauze one side in all sizes—prices on application.

### Cherokee Cleanser and Wyandotte Detergent

For cleaning painted surface, tile, marble and linoleum. 75-lb. kegs, price on application.

### Wyandotte Cleaner and Cleanser



A cleaning compound in powder form for scrubbing floors, tables, vats, churns, etc., for washing milk cans and bottles, and cleaning windows; in fact, for any and every purpose. Makes everything clean, sweet and pure. 5-lb. bag, 45c. Special prices on kegs and barrels on application.

### Sterilize Your Milk Bottles with



Greatest germ-killing disinfectant and deodorant on the market. Destroys foul odors. Leaves no stain on walls or utensils. 10-oz. bottle, 50c; qt., 90c; gal., \$2.00.

We can also supply B-K in Powder form. Mailable.

#### B-K POWDER

Large size, makes 3 gals. B-K ..... \$1.50  
Small size, makes 1 gal. B-K ..... .75

Postage extra.

MILKING STOOLS, MILK PAILS, MILK AND CREAM TESTERS, MILK COOLERS AND AERATORS, MILK BOTTLE CAPS, MILK BOTTLE FILLERS.

We carry a full line of Dairy Supplies. Prices of above on application.



# Archias' Wholesale Prices 1934

For Market Gardeners, Florists, Large Planters and Dealers

Our Gilt Edge Warranty is Your Protection

These special, very low prices do not include delivery. If wanted by mail, add postage as per schedule, zone rates.

**ASPARAGUS.** See Page 13. ¼ lb. 1 lb.  
Giant Washington Rust-Proof .....\$0.30 \$0.85  
Barr's Mammoth White ..... .20 .55

**BEANS—DWARF.** See page 14. 10 lbs. 25 lbs.  
Stringless Green Pod, Burpee's .....\$1.50 \$3.00  
Improved Red Valentine, Green Pod ..... 1.50 3.00  
Golden Wax ..... 1.50 3.00  
Pencil Pod Black Wax ..... 1.75 3.50  
Burpee's Bush Lima ..... 2.00 4.50  
Henderson's Bush Lima ..... 1.50 3.50  
Bountiful ..... 1.50 3.00  
Full Measure ..... 1.50 3.00  
Tendergreen ..... 1.50 3.00

**BEANS—POLE.** See Page 14. 10 lbs. 25 lbs.  
Kentucky Wonder .....\$1.75 \$3.75  
Cut Short Red Speckled ..... 1.75 3.75  
King of the Garden Lima ..... 2.00 4.50  
Florida Speckled Butter Pole Lima ..... 1.75 3.75  
Kentucky Wonder Wax ..... 1.75 3.75

**BEETS—For Table Use.** See Page 13. 1 lb. 5 lbs.  
Crimson Globe .....\$0.65 \$3.00  
Detroit Dark Red ..... .65 3.00  
Crosby's Egyptian ..... .65 3.00  
Early Wonder ..... .65 3.00  
Swiss Chard ..... .75

**BEETS—For Stock Feed.** See Page 13. 1 lb. 5 lbs.  
Golden Tankard Mangel .....\$0.45 \$1.50  
Mammoth Red Jumbo ..... .45 1.50  
Improved White Sugar ..... .60 2.50

**CABBAGE.** See Page 15. ¼ lb. 1 lb.  
Golden Acre—Select Danish .....\$0.90 \$3.00  
Archias' Allhead Early ..... .50 1.75  
Archias' Surehead ..... .50 1.75  
Early Jersey Wakefield ..... .50 1.75  
Early Flat Dutch Improved ..... .50 1.75  
Copenhagen Market, Danish ..... .75 2.50  
Glory of Enkhuizen, Danish ..... .50 1.75  
Premium Late Flat Dutch ..... .50 1.75  
Chinese Celery Cabbage (Wong Bok) ..... .65 2.00

**CARROTS.** See Page 16. 1 lb. 5 lbs.  
Oxheart or Guerande .....\$0.90 \$4.00  
Early Scarlet Horn ..... .65 3.00  
Danvers Half Long Select ..... .90 4.00  
Yellow Belgian, For stock ..... .55 2.50  
St. Valery ..... .90 4.00  
Long Orange ..... .90 4.00

**CELERY.** See Page 15. ¼ lb. 1 lb.  
Giant Pascal or Winter King, French .....\$0.65 \$1.50  
White Plume, French ..... .65 2.00  
Golden Self-Blanching ..... 1.00 3.50

**SWEET CORN.** See Page 16. 10 lbs. 25 lbs.  
Howling Mob .....\$1.50 \$3.00  
Golden Bantam ..... 1.50 3.00  
Golden Giant ..... 1.50 3.00  
Early Adams (Not Sweet) ..... 1.00 2.00  
Early Minnesota ..... 1.25 2.50  
Country Gentleman ..... 1.50 3.00  
Stowell's Evergreen ..... 1.25 2.50

**CUCUMBERS.** See Page 16. ¼ lb. 1 lb. 5 lbs.  
Davis' Perfect .....\$0.25 \$0.90 \$4.25  
Improved Long Green ..... .25 .90 4.25  
White Spine Improved ..... .20 .75 3.50  
New Everbearing ..... .25 .90 4.25  
Japanese Climbing ..... .25 .90 4.00

**KALE.** See Page 17. 1 lb. 5 lbs.  
Dwarf Green .....\$0.55 \$2.50  
Tall Green Scotch ..... .55 2.50

**KOHL-RABI.** See Page 17. ¼ lb. 1 lb.  
Purple Vienna .....\$0.30 \$1.00  
Early White Vienna ..... .30 1.00

**LEEK.** ¼ lb. 1 lb.  
Large London Flag .....\$0.60 \$2.00

**LETTUCE.** See Page 17. ¼ lb. 1 lb. 5 lbs.  
New York Market .....\$0.50 \$1.75 \$8.00  
Improved Big Boston, Archias' Select ..... .30 1.00 4.50  
Grand Rapids ..... .30 1.00 4.50  
Hanson ..... .30 1.00 4.50  
Black-Seeded Simpson ..... .30 1.00 4.50  
Prize Head ..... .30 1.00 4.50  
Paris White Cos ..... .35 1.35 5.00

**MUSKMELON.** See Page 18. 1 lb. 5 lbs.  
Pollock's 10-25 Salmon Tint, Selected Seed .....\$0.75 \$3.50  
Rocky Ford Cantaloupe ..... .75 3.50  
Burrell's Gem ..... .75 3.50  
Edward's Perfecto ..... .65 3.00  
Banana ..... .75 3.50  
Hackensack Improved Early ..... .75 3.25  
Hale's Best ..... 1.10 5.00  
Honey Ball ..... 1.25 5.00  
Honey Dew ..... 1.00 4.50  
Honey Rock or Sugar Rock ..... 1.10 5.00

**MUSTARD.** See Page 17. 1 lb. 5 lbs.  
White .....\$0.45 \$2.00  
Brown ..... .45 2.00

**MUSTARD—Continued.** 1 lb. 5 lbs.  
Southern Giant Curled .....\$0.45 \$2.00  
Tendergreen or Mustard Spinach ..... .45 2.00

**OKRA.** See Page 19. ¼ lb. 1 lb.  
Kleckley's Favorite .....\$0.15 \$0.40  
Dwarf Green Pod ..... .15 .40

**WATERMELON.** See Page 18. 1 lb. 5 lbs.  
Kleckley's Sweet .....\$0.55 \$2.50  
Tom Watson ..... .55 2.50  
Sunnybrook ..... .90 4.25  
New Stone Mountain ..... .65 3.00  
Irish Grey ..... .65 3.00  
Halbert Honey ..... .55 2.50  
Porto Rican Improved ..... 1.25 5.00

**ONION.** See Page 18. 1 lb. 5 lbs.  
Danvers Yellow Globe .....\$1.50 \$7.00  
Southport Red Globe ..... 1.75 7.00  
Large Red Wethersfield ..... 1.50 7.25  
Prizetaker ..... 1.65 7.50  
Southport White Globe ..... 1.75 8.00

**PARSNIPS.** See Page 19. 1 lb. 5 lbs.  
Hollow Crown .....\$0.55 \$2.00

**PARSLEY.** See Page 19. ¼ lb. 1 lb.  
Double Curled .....\$0.20 \$0.65

**PEAS.** See Page 19. 10 lbs. 25 lbs.  
Alaska, Very early .....\$1.80 \$3.75  
Archias' Extra Early ..... 1.80 3.75  
Laxtonian ..... 1.80 3.75  
American Wonder ..... 1.80 3.75  
Premium Gem ..... 1.80 3.75  
Laxton's Progress ..... 1.80 3.75  
Archias' Select Everbearing ..... 1.75 3.65  
Champion of England ..... 1.80 3.75  
Select Early Surprise ..... 2.00 4.50  
Stratagem ..... 1.75 4.00  
Mammoth Melting Sugar ..... 2.00 4.50

**PEPPER.** See Page 19. ¼ lb. 1 lb.  
Ruby King .....\$0.75 \$2.90  
Chinese Giant ..... 1.00 3.50  
Long Red Cayenne ..... .90 3.25  
Pimiento—Archias' Perfection ..... .90 3.00  
Celestial ..... .75 2.90

**PUMPKIN.** See Page 19. 1 lb. 5 lbs.  
Large Cheese—Kentucky Field .....\$0.35 \$1.50  
Large Yellow Cornfield ..... .40 1.75  
White (ushaw) ..... .65 3.00  
Green Striped Cushaw ..... .65 3.00  
Japanese Pie ..... .75 3.25  
Tennessee Sweet Potato ..... .75 3.25  
King of Mammoths ..... .75 3.25

**RADISHES.** See Page 20. 1 lb. 5 lbs.  
Archias' Crimson Giant Forcing .....\$0.60 \$2.50  
Early Scarlet Turnip, White Tipped (Sparkler) ..... .60 2.50  
Early Scarlet Turnip ..... .60 2.50  
French Breakfast ..... .60 2.50  
Chartier ..... .60 2.50  
Long Scarlet Short Top ..... .60 2.50  
Iceberg Long White ..... .60 2.50  
China Rose Winter ..... .65 3.00  
Long Black Spanish ..... .65 3.00

**SALSIFY.** See Page 20. ¼ lb. 1 lb.  
Mammoth Sandwich Island .....\$0.40 \$1.25

**RUTABAGA.** See Page 21. 1 lb. 5 lbs.  
Purple Top Yellow .....\$0.60 \$2.50

**SPINACH.** See Page 20. 1 lb. 5 lbs.  
Long Standing Bloomsdale .....\$0.35 \$1.50  
Selected Bloomsdale ..... .35 1.50  
New Zealand Prickly Winter ..... .50 2.00

**SQUASH.** See Page 20. 1 lb. 5 lbs.  
Golden Summer Crookneck .....\$0.75 \$3.50  
New Giant Straight Neck ..... .75 3.50  
White Bush Scalloped ..... .75 3.50  
Hubbard ..... .75 3.50  
Mammoth Chili ..... .75 3.50  
Banana ..... .75 3.50

**TOMATO.** See Page 21. ¼ lb. 1 lb.  
John Baer .....\$0.70 \$2.50  
Earliana ..... .70 2.50  
Beauty ..... .70 2.50  
Ponderosa ..... 1.25 4.50  
Dwarf Champion ..... .90 3.50  
Archias' Missouri Giant ..... 1.75 6.00  
Stone ..... .70 2.50  
Marglobe—Wilt Resistant ..... 1.00 3.50  
Oxheart ..... 2.00 7.00  
Break o' Day—Wilt Resistant ..... 1.00 3.50  
June Pink ..... .90 3.50  
Pritchard—Scarlet Topper—Wilt Resistant ..... 1.00 3.50

**TURNIPS.** See Page 21. 1 lb. 5 lbs.  
Extra Early Purple Top Milan .....\$0.60 \$2.75  
Shogoin or Japanese ..... .50 2.25  
Purple Top Strap Leaf ..... .45 2.00  
Early White Flat Dutch ..... .45 2.00  
White Egg ..... .45 2.00  
Red or Purple Top Globe ..... .45 2.00  
Amber Globe ..... .45 2.00  
Large White Globe ..... .45 2.00

If wanting varieties in quantities that are not named in this list, please write us.





Etoile de Hollande.

# Archias' HARDY <sup>Field Grown</sup> ROSES

New Varieties  
Everblooming  
Anniversary Prices

**10** GLORIOUS BLOOMING  
HYBRID TEA ROSES. 2-  
year strong bushes that  
will bloom this season.  
ALL TEN MAILED **\$3.45**  
FREE For .....

**MARGARET McGREDY.** A vigorous free-flowering rose with long pointed bud opening to a large, shapely, long-lasting flower of rich Oriental red.

**MISS ROWENA THOM.** Buds large, long pointed. Well formed and double—of a brilliant rose-pink with golden suffusion. A constant bloomer.

**REV. F. PAGE-ROBERTS.** The long-pointed buds are of a coppery yellow, red, opening to a full double fragrant flowering golden yellow, beautiful foliage and growth.

**TALISMAN.** A most popular and remarkable rose. Rich combination of bright apricot, gold and deep rose-pink.

**RADIANCE.** The hardiest of Roses, vigorous and prolific—its color a beautiful blending of carmine-rose with shades of opal and copper.

**RED RADIANCE.** The Radiance Roses are always in bloom. Strong, healthy, color brilliant crimson.

**MME. BUTTERFLY.** A symphony of cream, pink, apricot and gold. A delightful rose in constant bloom.

**WHITE KILLARNEY (Double).** A beautiful improvement of the old Killarney type, with flowers white as snow.

**BRIARCLIFF.** A bright clear Columbia shade of clear pink—the most profuse and popular of all cut flower Roses.

**SOUV. de CLAUDIUS PERNET.** Most striking sunflower-yellow, long-pointed bud of exquisite shape and very large, double, fragrant flowers—grows vigorously and is a free bloomer.

Your choice of any of the above 2-year, hardy field grown bushes—  
Each, 40c; 3 for \$1.10; 6 for \$2.15;  
10 for \$3.45. MAILED FREE.

## GOLDEN JUBILEE Super Rose Collection

5 Exceptionally New Novelty Varieties—All Strong, 2-year Field Grown—Everblooming.

**E. G. HILL.** Beautiful long bud of perfect form, full double-high centered flower of dazzling scarlet shaded deep red.

**PRESIDENT HERBERT HOOVER.** Most attractive and novel in coloring which is a splendid combination of cerise-pink, flame, scarlet and yellow. Truly a beautiful rose.

**DAME EDITH HELEN.** A glorious and delightful long-pointed bud, full double, with very substantial broad petals developing into a flower of great size. Color, brilliant, soft Rose du Barry pink.

**ONE EACH**

Of these five (5) New Roses—2-year, field-grown. MAILED FREE—for

**\$1.95**

**JOANNA HILL.** A vigorous, profuse blooming long-budded Rose of pleasing clear yellow with golden shadings at base. The most popular of cut flower Roses.

**ETOILE de HOLLANDE.** The finest of Red Garden Roses. A brilliant crimson red; strong, vigorous grower, fragrant and beautiful in all stages of development.

MAILED FREE.  
Each, 45c; 5 for \$1.95..

## HARDY CLIMBING ROSES

Extra strong, 2-year plants. MAILED FREE for 35c each.

**AMERICAN BEAUTY CLIMBER.** Clusters of large rose-red flowers.

**PAUL'S SCARLET.** Most popular of climbers. Color brilliant scarlet.

**DR. W. VAN FLEET.** Long-pointed flesh-pink buds on 12 to 18-inch stems.

**MARY WALLACE.** Clear rose-pink with salmon base. Flowers large and profuse bloomers.

The Above 4 Climbers Mailed Free for Only 35c each; 3 for \$1.00; 10 for \$2.50.

### New Climbing Roses

**GOLDEN CLIMBER (Mrs. Arthur Curtiss James).** (Plant Patent No. 28). The latest introduction in patented Roses. Highly recommended as a really hardy Golden Climber. Hybrid Tea type with long-lasting blooms on single stems. Each, \$2.00. Mailed Free.

**BLAZE.** (Plant Patent No. 10). The only hardy Red Everblooming Climber. A sensation since its introduction last spring. Each, \$2.00. Mailed Free.

**NEW DAWN.** (Plant Patent No. 1). The first Everblooming Climber—bred from the Dr. W. Van Fleet. Produces delicate, flesh-pink, fragrant flowers in abundance through summer and fall. Each, \$1.50. Mailed Free.



Joanna Hill.

COPYRIGHT BY JACKSON & PERKINS CO.



Briarcliff.



Blaze.