

## **Historic, archived document**

Do not assume content reflects current scientific knowledge, policies, or practices



2.09

LIBRARY  
JAN 11 1892  
U. S. DEPARTMENT OF AGRICULTURE

CATALOGUE  
of  
SHERWOOD HALL  
NURSERIES



MENLO =

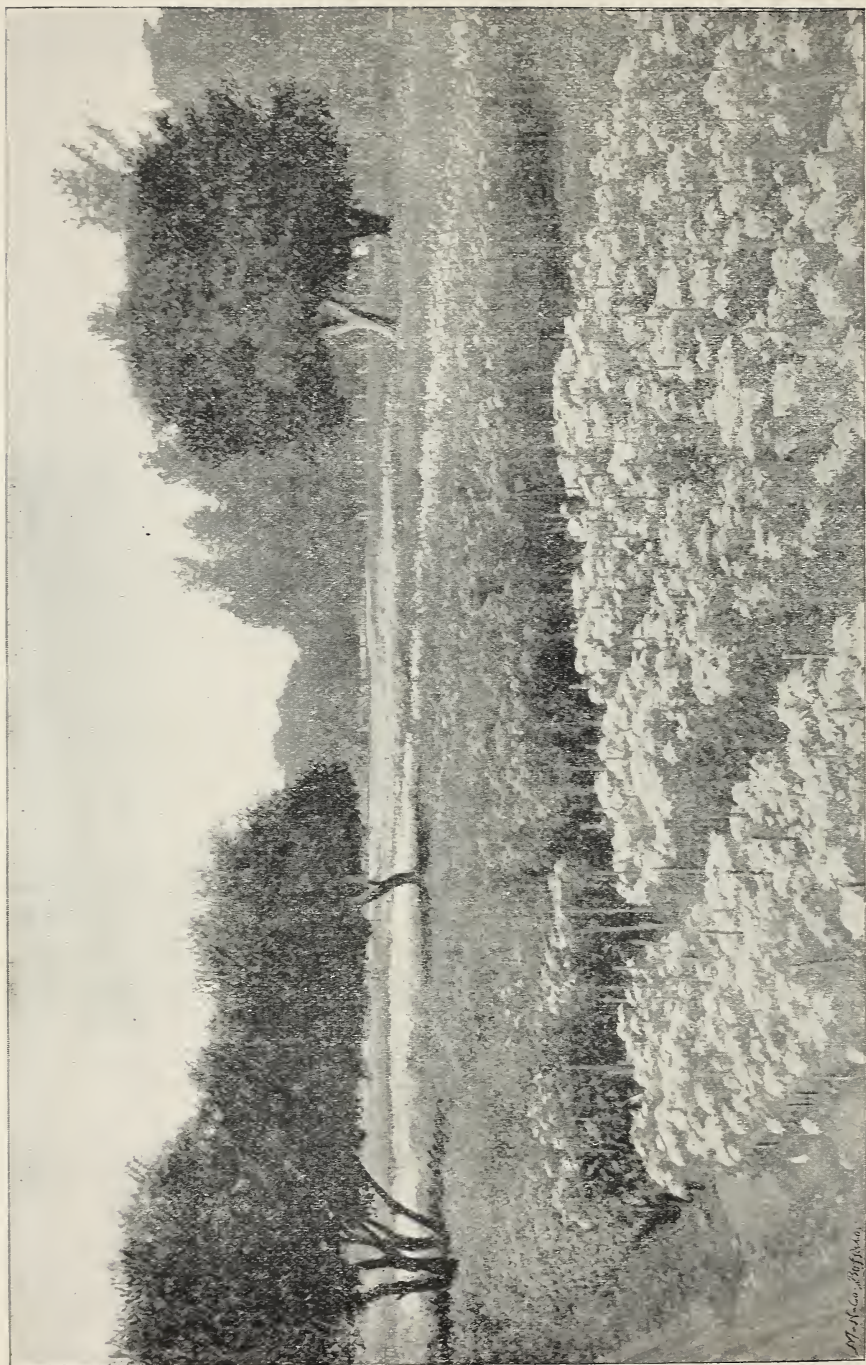
= PARK

SAN MATEO  
COUNTY

CALIFORNIA  
1892.







CHRYSANTHEMUM FIELD, SHERWOOD HALL NURSERIES, MENLO PARK, CALIFORNIA.

*M. J. ...*

ORDER SHEET

SHERWOOD HALL NURSERIES, MENLO PARK CALIFORNIA

Date, 189 . Please forward by [State if wanted by Mail, Express, Freight or Steamer]

To M

Gardener's Name,

Post Office Station

County County

State State

Enclosed find Cash, \$; Draft, \$; P. O. Order, \$; Postal Note, \$; or send C. O. D., \$

Table with 3 columns: QUANTITY, ARTICLES, PRICE. The table is mostly empty with dotted lines for text entry.





## This Is Important

**I**T BECOMES OUR PLEASURE to present this, our second catalogue, and we take the occasion to thank those who have so kindly favored us with their orders during the past year. It is also desired to assure those who have never dealt with us, that we will in the future, as in the past, use every endeavor to comply with all demands in a prompt and satisfactory manner.

**THE NURSERY.**—Our Nursery is located at Menlo Park, San Mateo County, on the Southern Pacific Railroad, midway between San Francisco and San Jose.

**STOCK.**—All stock offered is strong and healthy, true to name and free from insect pests. Constant watchfulness is exercised to prevent the propagation of weak or imperfect stock, and varieties have been selected with a special view to their adaptation to the soil and climate of California.

**PACKING.**—All orders are packed by those experienced in the art, and so carefully are plants prepared for shipment that complaints from bad packing are exceedingly rare.

**PRICES.**—No attempt is made to outdo other establishments in prices. It costs money to grow good stock and we have no other kind for sale. So-called cheap stock generally proves very dear in the end. Prices have been made as reasonable as possible, quality of stock considered. Special prices will be made for large orders.

**SHIPPING.**—Plants should, whenever practicable, be sent by express, as larger, stronger stock can be given, but every care will be exercised in selecting stock and in packing mail orders for points not accessible by express.

**MISTAKES.**—The greatest pains are taken to prevent mistakes in filling orders, but should any be detected, prompt notice of the fact and circumstances will assure correction without delay.

**CORRECT ADDRESS.**—Be careful to write your orders and full name and address very plainly; attention to this will obviate much confusion, delay and possible loss.

**SMALL ORDERS.**—As the expense attending the packing of small orders is often nearly or quite as great as that attending those of greater size and value, patrons are requested to add 10 cents for packing on all plant orders of a less value than \$1.

**REMITTANCES.**—Money should be sent by Wells, Fargo Express or by Post-office money order, drawn on San Francisco.

**SHERWOOD HALL NURSERIES,**

**TIMOTHY HOPKINS, Proprietor,**

Menlo Park, California.

## A GARDEN CHAT

Another planting season has rolled around and we greet our friends and wish them one and all a successful year in the garden. It will be noticed that several new features have been introduced into our catalogue, and a number of carefully tested new varieties have been added to the lists, while some that have proven themselves less desirable or have been superseded by something better have been discarded.

Not having sufficient room to conduct our rapidly growing business, we have during the past year erected a number of commodious greenhouses, and we now have by far the largest and most complete floral establishment on the Pacific Coast. Our stock is in fine condition, and it is with no small degree of pleasure that we look forward to the general satisfaction which it will give those of our friends who favor us with their orders.

The past year has been a prosperous one for California, and the time is opportune to adorn barren door-yards, and fill up vacant places in the flower garden or add new beauties. Perhaps shade trees are lacking or the planting of a hedge is in contemplation. It is much better to decide just what is wanted early in the season and send in your order; thus, the rush is avoided and the most careful individual attention is secured.

### PLANTS AND FLOWER SEEDS FREE TO PUBLIC SCHOOLS

We desire this year to make a special effort to popularize our beautiful flowers, and, at the same time, benefit the public. To accomplish this, we have decided to send out free of charge, when the amount of postage or express is remitted, a package of plants, or collection of sweet pea seeds to the children of every public school in the State, who will pledge themselves to carefully cultivate the same within the school grounds. All such orders must be signed by the teacher in charge and the name and location of the school given.

Most of our schoolyards and buildings are so barren and uninviting that it is little wonder that the children want to stay at home or go anywhere rather than to school. This neglectful system is all wrong, and is crude and barbarous. The finer instincts of our children should be fostered and cultivated, not only by surrounding them with beautiful flowers and trees at home, but the schoolyards should be made so beautiful that they would take a pride and delight in having an individual ownership in them. A mere memorizing of the contents of books does not mean education in the higher sense; but, in the contemplation of nature in its most beautiful and perfect forms, the thoughts are lifted out of the rugged, tortuous channel of life's routine, and placed upon the higher plane of original investigation, which may lead to the greatest possibilities.

## NOVELTIES

It has for a long time been the complaint among flower lovers of the Pacific Coast, that they were obliged to send East for all of the newer varieties and novelties in flowers. We have after careful deliberation concluded to at one stroke remedy this evil, by placing our establishment on a par with other large firms in this respect.

We have at considerable trouble and expense arranged with several of the most noted and reliable Eastern Chrysanthemum and Carnation Growers, to offer their choicest novelties simultaneously with their appearance in the East and at the same prices.

This is a great stride for California floriculture, and has hitherto never been attempted.

We hope another year to extend our offering of novelties to other classes of plants.

It now remains to be seen to what extent the public will support our enterprise, but we feel confident that our friends will appreciate this effort in their behalf, and that by another season the wisdom of our course will have been clearly demonstrated.

The descriptions of novelties are those furnished by the originators and introducers.

### NEW CHRYSANTHEMUMS

#### PITCHER AND MANDA'S 1892 NOVELTIES

##### SET OF TWELVE OF THE HAIRY (MRS. ALPHEUS HARDY) TYPE

**MISS ANNIE MANDA.**—Flower very high and compact, perfectly double, incurved, of the purest white. The numerous petals are well furnished with long, glandular, hair-like outgrowth, giving the flower a unique appearance, far surpassing the celebrated Mrs. Alpheus Hardy. The plant is of a strong and vigorous habit, carrying the flower erect on a stout stem. Another recommendation is that the flower is sweetly scented.

**W. A. MANDA.**—The New Golden Yellow Hairy Chrysanthemum. Flower very large, of a clear golden yellow color. The plant is vigorous in growth, and the flower is borne upright on a stout stem. This is the grandest introduction from Japan made during the past year, and no collection can afford to be without this variety.

**MR. H. BALLANTINE.**—Flower rather flat, showing the center somewhat, of a beautiful old gold or bronzy color. A free grower and a good acquisition.

**MARBLE.**—Flower pure white, of medium size, the strongly incurving petals evenly imbricated, giving the flower a compact and solid appearance.

**PEARL SHELL.**—Flower very large, semi-double, of a beautiful pale pink. A free growing plant.

**NACRE.**—Flower large, almost double, of a fine silvery pink color; petals incurved.

**ALABASTER.**—Flower large, white, with a yellow center, borne upright on a stout stem; petals incurving.

**PEERLESS.**—Flower of loose texture, white, with yellow center. A good grower.

**CHASTITY.**—Large, full flower, white, with a yellow center; petals strongly incurved.

**SIMPLICITY.**—Flower of good size, white, with a green center; petals incurved.

**VANITY.**—Flower large, semi-double, of a lilac pink color; petals sparingly hairy, incurved.

**PURITY.**—Flower very large, single, pure white, with a large, yellow, button-like center; petals very broad, slightly reflexing.

Price, \$1.00 each; \$10.00 for the set of 12.

### SET OF PRIZE INCURVED VARIETIES

**HARRY MAY.**—Flower very large and deep, full double, forming when well-opened a massive sphere; color, deep old gold, with occasional veins of red; petals very broad and thick, spoon-shaped. Foliage very luxuriant, thick and leathery, deep green, quite distinct among chrysanthemums. One of the most vigorous growing of all varieties in cultivation and unsurpassed for growing either as a standard, as a bush plant, or for cut blooms for exhibition purposes.

**MISS M. COLGATE.**—Flowers perfectly hemispherical, compact with a full center, pure white; petals broad, incurved. A grand pure white variety, a strong grower and free flowerer; good for all exhibition purposes.

**MR. HICKS ARNOLD.**—A strong growing and floriferous variety, bearing large, full double flowers of an old gold color, lighting up wonderfully by artificial light. When fully open the flower is almost spherical. The freest growing variety known and one which may be grown with success for almost any purpose.

**MRS. DR. H. A. MANDEVILLE.**—Large flower, perfectly spherical, with broad, incurved petals of a terra cotta yellow. Plant of vigorous habit and good for exhibition purposes.

**MR. D. S. BROWN.**—Flower medium size, semi-double, of a clear canary yellow color when first opening, but changing to cream color as the petals expand. A distinct color.

**MISS BERTHA N. ROBISON.**—Flower rose-pink with red center, very early, of large size and good substance. One of the earliest and best varieties for exhibition purposes, either as pot plants or cut flowers.

**GEORGE SAVAGE.**—Flowers very large, pure white, with broad, strongly incurved petals, making the flower almost hemispherical and very solid. A grand variety, of vigorous, free flowering habit, and useful for cut blooms for exhibition.

**MRS. JOHN EYERMAN.**—Flower semi-globular, full double petals decidedly spoon-shaped, the lower half being tubular, while the limb is broadly expanded; upper surface rose-pink, lower pale lilac. A grand variety for exhibition purposes.

**DR. H. A. MANDEVILLE.**—Flower large, full double, bright chrome yellow; petals very long and twisted, with a swirled habit, the upper incurved, while the lower are reflexed towards the stem. One of the grandest varieties in cultivation.

**MOHICAN.**—Flower large, of a deep mahogany color; petals incurved, covering the center well when fully expanded. Plant of vigorous growth and habit, and the flower of a distinct color in collections.

**PAWNEE.**—Flowers very large, Indian red, with yellow shadings, massive, incurved. A fine late-flowering variety.

**MRS. T. F. MERCER.**—Flower large, blush white; petals broad, incurved, the inner regularly imbricated, the outer more spreading. One of the best varieties for exhibition purposes, and valuable on account of its late flowering.

Price, \$1.00 each; \$10.00 for the set of 12.

## SET OF PRIZE REFLEXED VARIETIES

**MRS. E. D. ADAMS.**—Flower very large; petals of medium width, very long, twisted, the outer ones swirled, as if the flower had been turned swiftly on its stem; color pure white. One of the best and most distinct white Chrysanthemums in cultivation. We had specimens measuring 13 inches over the flower from tip to tip of petals. Makes a grand bush plant.

**MRS. W. S. KIMBALL.**—Flower very large, full double, pale blush or creamy white with a yellowish center; petals very broad, reflexed. One of the finest varieties for exhibition purposes.

**MISS ADA McVICKER.**—A plant of strong habit, producing immense creamy white flowers with broad, thick, reflexed petals. A grand variety and one of the best for either specimen blooms, bush plants or standards.

**MRS. J. HOOD WRIGHT.**—Flower large, full double, of the purest white, with reflex twisted petals; a strong grower and one of the finest early varieties in cultivation.

**COL. H. M. BOIES**—A plant of vigorous habit, producing very large, rose-pink flowers with twisted petals, veined with a lighter shade; very full center. A grand exhibition variety.

**FRANCES TARBOX.**—Large flower, with full center; petals broad, convex, silvery pink, with a narrow line of pale lilac at the extreme edge. A fine early flowering variety.

**MRS. HERBERT LEON.**—Flower very large, full double pink, with broad, reflexed petals. A very fine early variety.

**MRS. GALLAGHER.**—Flower large, semi-globular, with full center; petals deep maroon crimson above, paler below. One of the very best dark varieties.

**MRS. E. D. CHURCH.**—One of the earliest varieties in cultivation. Flowers full double, of medium size, borne on stout stems and lasting long in perfection. Color pink, in various shades.

**MRS. R. BENNER.**—Flower medium size, of a deep lilac-pink color, with a red center. A very striking late variety.

**BABY CLEVELAND**—Flower semi-globular, full double, of medium size, with broad petals. Color, lilac-pink, a very fine and telling color among Chrysanthemums.

**MR. A. G. RAMSAY.**—Flower of medium size, full center; petals broad, upper surface of the expanded limb deep Indian red, yellowish at the tip, under surface yellowish, veined with lines of red. A striking sort.

Price, \$1.00 each; \$10.00 for the set of 12.

### SET OF SIX ANEMONE FLOWERED

**HERALD.**—One of the grandest of the section. Flowers very large, bright golden yellow; the central florets tubular, large, an inch or more long, notched at the rim, crowded into a compact head. Ray petals in a single row, very long, drooping with age.

**ECRET.**—Flower of medium size, pure white; central petals strap-shaped, standing upright; ray petals in a single row, reflexed.

**DOVE.**—Flower pure white; central petals short, erect, ray petals numerous, partly incurving.

**PIGEON.**—Flower pale delicate pink, the disk petals strap-shaped, very numerous and crowded; ray petals few, reflexed.

**DUCK.**—Flower medium size, white, the ray petals in several rows.

**HERON.**—Flower very large, rose-pink; ray petals in several rows.

Price, \$1.00 each; \$5.00 for the set of 6.

### SET OF TWELVE PRIZE SINGLE-FLOWERED

**NEWARK.**—Large, pure white flower, with very broad and thick, round petals.

**NEWTON.**—A fine free grower with large flowers of rose-pink color.

**TRENTON.**—Large, pure white flower, with narrow, pointed petals.

**PRINCETON.**—Large flower of bright golden yellow, with pointed petals.

**CAMDEN.**—Large, lilac-pink flower, with tubular spathulate petals.

**SALEM.**—Flower of salmon-rose, with tubular spathulate petals.

**BOONTON.**—Large, rose-pink flower, with narrow, pointed petals.

**RAHWAY.**—Large, white flower, with reflexed, pointed petals.

**HACKENSACK.**—Very large flower of lovely pale pink; petals strongly spoon-shaped.

**MITFORD.**—Flower pure white, with long, narrow petals.

**ORANGE.**—Flower bright golden yellow, with large, broad petals.

**BURLINGTON.**—Flower pure white, with long, tubular petals.

Price, 75 cents each; \$7.50 for the set of 12.

### SPAULDING'S 1892 NOVELTIES

In speaking of these Novelties, Mr. Spaulding says, "I desire to call your attention to the collection below, which I guarantee to be the best twelve ever distributed in one set:"

**ROSLYN.**—A superb, clear, Mermet rose pink, petals thick and heavy, cup-shaped, solid to the center, immense in size, having been exhibited eleven inches across, habit the best, stems stiff and erect, foliage luxuriant, the best pink in commerce. Awarded Silver Medal, Pennsylvania Horticultural Society, Certificate of Merit, Madison Square Garden, New York, and was one of the varieties winning the Spaulding prize at Philadelphia for best six new seedlings. Single plants, \$1.50.

**SHENANDOAH.**—Magnificent broad flower, full and double to the center petals, over an inch in width; color, a new shade deep chestnut brown on both upper and lower surfaces, the entire flower being a solid color without shadings; novel and distinct. Prize winner at Philadelphia. Price, \$1.00 each.

**E. HITZEROTH.**—A magnificent, extra large flower, petals broad and peculiarly arranged, completely filling the center. Bright lemon yellow, novel form, fine for commercial or exhibition purposes. Awarded the Winslow Cup at Madison Square Garden, New York, for best yellow, also Certificate of Merit. Single plants, \$1.50.

**LILLIAN RUSSELL.**—A beautiful, broad-petaled variety, clear, silvery pink, incurved, forming an immense round ball of largest size, an early flowering sort, suitable for all purposes, was among the collection winning the Astor Cup, at Madison Square Garden.

**ADA H. LE ROY.**—Symmetrically formed, petals broad and cupped full to the center, color deep rose-pink, extra large flower; one of the best for exhibition purposes. Certificate of Merit by Pennsylvania Horticultural Society.

**COL. WM. B. SMITH.**—An immense double, high-built flower, petals, broad and large, forming a solid mass of the richest, bright golden bronze. Awarded at Madison Square Garden Exhibition, Certificate of Merit, also the Bird Cup for best seedling not yet in commerce. Certificate of Merit by Pennsylvania Horticultural Society. Single plants, \$1.50.

**RUTH CLEVELAND.**—A chaste and beautiful acquisition, large size, petals broad, cup-shaped, outer petals reflex, inner ones incurve, forming a high-built center of most delicate silvery pink. This variety, having been registered, it is the only one recognized by the American Chrysanthemum Society under this name. One of the collection winning the Astor Cup.

**H. F. SPAULDING.**—A grand Japanese variety of novel shape and effect. Color rich apricot yellow shading to rose, center petals clear yellow, bloom solid and double, high-built and of largest size, similar in shape to a pineapple; habit strong and robust. Awarded the Ladenburg Cup at Madison Square Garden Exhibition, also Certificate of Merit. Single plants, \$1.50.

**J. N. MAY.**—Extra large, deep ox blood red, color of Mrs. J. T. Emlin, but much larger and more double; reverse of petals shaded coppery bronze, full, solid flower. An acquisition.

**MRS. J. W. MORRISSEY.**—A mammoth flower with full double center, exhibited twelve inches across, color silvery pink, inner surface of petals bright rose. A grand exhibition bloom. Awarded Certificate of Merit by Pennsylvania Horticultural Society.

**EVA HOYTE.**—An immense, double Japanese bloom of clearest and brightest yellow, a solid ball with full, high-built center; grand for any purpose and superior to Widener or other existing varieties for exhibition purposes. Two hundred and fifty dollars was paid for the control of this magnificent yellow. Single plants, \$1.50.

**A. LADENBURG.**—A full and extremely double Japanese variety, immense size, having been grown ten inches across, style and shape of Mrs. I. Clark, except in color, which is a clear delicate rose-pink; magnificent for exhibition purposes. Awarded Certificate of Merit by Pennsylvania Horticultural Society, also at Madison Square Garden Exhibition.

Single plants, except when noted, \$1.00 each; the collection of twelve varieties \$10.00. Ready for distribution March 1st.

## E. G. HILL'S 1892 NOVELTIES

**DR. COVERT.**—A magnificent incurving deep golden yellow of great substance, very bright and attractive, perfectly double, carried on stiff stems, an excellent grower; a grand variety to follow Widener in season of blooming.

**EDWARD HATCH.**—One of the grandest offerings of the year; an immense incurving variety, depth about equal to its diameter; color, soft lemon and bright pink; awarded silver cup at Madison Square for best pink seedling; also First Class Certificate New York and Indianapolis.

**FRED. DORNER.**—Opens with incurving center and recurving outer petals, gradually resolves into a large pyramid of recurving petals; very pleasing creamy white, with light lines of palest pink. First Premium as finest seedling at the last Orange, N. J., show.

**JNO. BERTERMANN.**—A very large flower of heavy texture and regular recurving form; color, creamy white; a fine grower, flowers borne on stiff stems.

**JOSEPH H. WHITE.**—A splendid white variety, with upright petals, forming a half globe; very double, of heavy substance, in every way a grand white. First Class Certificate at both New York and Boston.

**MRS. ROBT. CRAIG.**—A snow-white variety, has the perfect incurving form of the best Chinese, together with the grandeur in size and heavy texture of the Japanese; of unsurpassed beauty. Silver Medal at Philadelphia, Certificate at Madison Square, N. Y., and Indianapolis.

**MRS. MARIA SIMPSON.**—Broad, heavy petals, gracefully incurving, a perfect Japanese variety; color, rich chrome yellow, one of the largest in size. Silver Medal at Philadelphia, Certificate at Indianapolis.

**MRS. L. C. MADEIRA.**—Probably the finest specimen extant in the Chinese section; it forms a large compact bright orange ball, very heavy petals, like an unopened, slightly incurving, quilled variety, nicely pointed; destined to become a leader. Silver Medal at Philadelphia, Certificate at Indianapolis.

**MRS. A. J. DREXEL.**—An early variety; color, rich velvety crimson maroon, very large for its season; will be much appreciated by those seeking large, early flowering sorts. Certificate at New York.

**MARGUERITE JEFFORDS.**—An immense ball of bright amber, very full and a perfect incurving specimen. Secured the Whilldin Prize at Philadelphia.

**O. P. BASSETT.**—The finest crimson scarlet ever introduced; a giant Cullingfordii—identical in color when Cullingfordii is at its best, and as large as Canning; very velvety. First Premium at Indianapolis, Certificate at both New York and Philadelphia.

Price, \$1 each, \$9.50 per set.

## NEW CARNATIONS

### E. G. HILL'S 1892 SET

**MRS. HITT.**—Free growing and very long-stemmed; flower large and of fine form; calyx perfect; color, glowing pink, a brighter shade than Tidal Wave.

**WHITE DOVE.**—A grand white fringe variety of large size; stems quite stiff and very long; foliage heavy; color, very pure.

**ATTRACTION.**—Extremely showy, bright rosy scarlet, nicely fringed and double; good stems and perfect calyx. A color universally admired.



**BEN HUR.**—Soft pink of the Wilder shade but brighter; petals broad and heavy; stems long and stout. An exquisite variety and a fine grower.

**INDIANA.**—The most beautiful of the variegated carnations; ground pure white, heavily flaked in rosy pink; flower large and fringed; stem long and stiff. A fine grower.

This set has been universally admired at the Eastern shows, all of the varieties having received certificates of merit.

Price, 30c each.

## NEW 1892 SEEDLING CARNATIONS

### AS DESCRIBED BY INTRODUCERS

**AURORA.**—Pink, the winner of the Ladenberg Silver Cup at Madison Square Garden, New York, Nov. 6, 1891, for the best pink carnation of recent introduction; a seedling of Century and Grace Wilder; delicate pink, fragrance delightful; a strong, handsome plant, coming into bloom quickly. Price, 30c each. Ready for delivery February 1st.

**THOS. CARTLEDGE.**—Carmine, closely resembling La Purite in color; vigorous grower; early to come in flower, and extremely prolific; a great acquisition. Price, 30c each.

**GRACE DARLING.**—Pink, plant vigorous and of medium size; an early and profuse bloomer; flowers on long stems and in sprays; of good size and very double; a clear, pure color, slightly darker than Grace Wilder; well tested and a profitable commercial variety. Price, 30c each.

**PEARL.**—White, very large; frequently from three to three and one-half inches across; full and crisp; occasionally a rosy blush; a good bloomer, with rarely any tendency to burst; stems long and stiff; very strong grower; awarded honorable mention at Philadelphia, and Certificate of Merit at New York exhibitions, spring of 1891. Price, 25c each.

**PURITAN.**—White, large; very full and of good substance; lasting, if well grown, a long time after being cut; quite fragrant and an early and continuous bloomer. Price, 25c each.

## ROSES

**C**OULD ONE desire roses more beautiful than those of California! Here they attain a perfection which may well excite the envy of less favored regions. They lend an idealistic beauty to our gardens and a soft radiance to our oftentimes embowered houses, that go far towards mitigating the everyday cares, furnishing a source of never-ending and ever-increasing enjoyment.

The very finest varieties of roses are now offered at such reasonable prices as to place them within the reach of everyone, and a very small outlay and a little fostering care will insure an abundance of the most beautiful flowers nearly the year round.

Roses easily adapt themselves to circumstances and will grow with but little care, but a healthy bush and an abundance of flowers is always the reward of generous treatment. They do best in a rich loamy or clayey soil, and can safely be planted any time from February 1st to the last of May, or in the fall. When planting cut the bushes back to sound eyes turning outward. Remove all weakly wood, spread the roots out naturally, and trim broken ends smooth. If the plant is from a pot and the ball still remains, loosen it slightly before setting in the ground. Firm the soil around the plant well, being careful to surface with dry, pulverized earth. Only water when the plant shows signs of needing it, and give no fertilizer until the first growth has hardened.

None but the choicest varieties are enumerated, and none but those specially adapted to the climate and soil of California. Our stock is all strong, healthy, and free from insects.

Special prices on large quantities.

### TEA ROSES

Every lover of flowers in California is so well acquainted with Tea Roses that a special description is unnecessary. They are valued alike for their beauty of form, color and sweetness, and for their free and continuous-flowering qualities. They require more pruning when in dormant state than any other class of roses, and the flowers should not be allowed to fade upon the bushes. A dusting of sulphur is the best remedy for mildew; tobacco, tea or dust and buhach will destroy the green aphid. The green-striped bugs (*diabrotica*), have to be caught by hand in the morning when they are clustered in the faded flowers.

Only a few of the choicest varieties are offered; strong plants from 2½ and 3 inch pots.

**WABAN.**—This is decidedly the novelty of the season among roses, and undoubtedly one of the most beautiful varieties ever produced. In every way similar to Catherine Mermet except in color, which is a rich Syrian rose. Price, 35c each.

**CATHERINE MERMET.**—Clear, rosy, flesh pink, shaded and veined with amber; silver lustre, large size, magnificent buds, generally conceded to be one of the finest tea roses in existence. Price, 15c and 20c each.

**MADAME HOSTE.**—A fine new variety, varying in color from ivory white to cream; fine buds, free-flowering. Price, 20c and 30c each.

**NIPHETOS.**—Pure white, long, graceful buds, delicate tea scent, free-flowering, highly prized. Price, 15c and 20c each.

**PAPA GONTIER.**—Crimson rose, with a lighting of yellow, buds long and fine, robust grower and free bloomer, strong tea fragrance. Price, 15c and 20c each.

**PERLE DES JARDINS.**—Rich straw color, sometimes deep canary, flowers and buds very large and beautiful, free-flowering, foliage very handsome; a great favorite. Price, 15c and 20c each.

**RAINBOW.**—A sport from Papa Gontier, a more robust grower and free-flowering than its parent. The petals have great substance. The ground color is a bright La France pink, beautifully striped and splashed with rich carmine. Price, 25c each.

**SUNSET.**—Rich tawny saffron and orange, similar in character of growth and flower to Perle des Jardins, of which it is a sprout; a beautiful rose. Price, 15c and 20c each.

**THE BRIDE.**—Pure ivory white, excepting in color identical with Catherine Mermet, its parent; buds of grand size, carried high and erect on bright, smooth stems; an all round good rose. Price, 15c and 25c each.

**THE QUEEN.**—A new, pure white variety of vigorous growth, flowers medium size, borne in profusion. Price, 15c and 25c each.

**AGRIPPINA.**—Richest shade of crimson, medium-sized flowers, profuse and continuous bloomer. Best hedgerose. Price, 15c and 20c each.

**MALMAISON.**—Rich flesh-colored flowers, of large size, beautiful buds, one of the oldest and best of roses. Price, 15c and 25c each.

**DEVONIENSIS (Magnolia Rose).**—Delicate creamy white, blush center, exquisite buds. Price, 15c and 20c each.

**DUCHESS DE BRABANT.**—Soft shell pink, globular and sweet, an old favorite. Price, 15c and 20c each.

**ETOILE DE LYON.**—Brilliant chrome yellow, medium-sized flower, very free bloomer. Price, 15c and 20c each.

**MARIE GUILLOT.**—Pure white, fine both in bud and open flower, one of the best white roses. Price, 15c and 20c each.

**SAFRANO.**—Buff-tinted apricot yellow, ideal tea rosebud, fragrant. An old favorite. Price, 15c and 20c each.

**MARIE VAN HOUTTE.**—Creamy white, outer petals suffused with reddish pink, large and beautiful buds. Price, 15c and 20c each.

## HYBRID TEA ROSES

The Hybrid Tea Roses have been nearly all introduced in the last few years, and some of them have proven prime favorites. They are produced by crossing the Teas with Hybrid Perpetuals, the resulting varieties combining the free-flowering qualities and delicate shades of the one, with the brilliance, fragrance and vigor of the other. They do best when given a semi-season of rest, and should not be pruned as freely as the teas.

**AMERICAN BEAUTY.**—Deep, brilliant pink, shaded with carmine; buds and flowers extra large, double and exceedingly sweet; flowers borne on strong, erect stems, closely set with rich, leathery foliage. Price, 25c and 35c each.

**DUCHESS OF ALBANY.**—"Syrian rose;" an exquisite shade of clear, deep pink; a sport of La France, similar in growth, character of flower and fragrance to its parent; one of the finest roses of recent introduction. Price, 20c and 35c each.

**LA FRANCE.**—Delicate, silvery rose, shading to silvery peach blossom, very large, globular form, petals sharply re-curved, delightfully fragrant and a free bloomer; a great favorite. Price, 15c and 20c each.

**METEOR.**—Dark, velvety crimson, exquisite buds and delicious fragrance, free-flowering; one of the finest. Price, 20c and 30c each.

**SOUVENIR DE WOOTTON.**—A beautiful shade of carmine crimson, beautiful in bud and expanded flower, sweet-scented and free-flowering; robust grower. Price, 15c and 20c each.

### HYBRID PERPETUAL ROSES

The Hybrid Perpetuals are among the grandest of roses, but they do not produce their flowers as freely as other classes. Their large size, rich coloring and sweet fragrance have, however, endeared them to the heart of every flower lover. They require strong, rich soil and bloom from the old wood.

**GEN. JACQUEMINOT.**—Rich, velvety crimson, large and beautiful buds and flowers; fragrance exquisite; a good grower and bloomer; an old favorite. Price, 10c and 20c each.

**MAGNA CHARTA.**—Clear, rosy pink, flushed with carmine, very large, globular, fragrant; strong grower. Price, 15c and 25c each.

**PAUL NEYRON.**—Bright pink, vigorous grower, and nearly a constant bloomer. One of the largest of all roses. Price, 15c and 20c each.

### POLYANTHA ROSES

These fairy-like roses are exceedingly beautiful. They are of low, compact, but graceful growth, and are profuse bloomers. They are conscientiously recommended to all lovers of rare and beautiful roses, and they will please all who plant them. They are excellent for weddings, cemetery planting or borders. The weak wood should be occasionally thinned, and over-vigorous shoots stopped. All dead flowers and spent flowering wood should be removed.

**MME. CECIL BRUNNER.**—Salmon pink, with rich salmon center; exquisitely formed buds, delicately scented, profuse bloomer. Price, 15c and 20c each.

**CLOTHILDE SOUPERT.**—Pure white flowers, pinkish center, borne with wonderful freedom, regular grower; a new rose of great merit, fine for bedding. Price, 15c and 20c each.

**MIGNONETTE.**—Dark pink, blooms in immense clusters. Price, 15c and 20c each.

### CLIMBING ROSES

The climate of California is specially adapted to the highest development of the finest climbing roses. Only plant enough of them, and your house will be continuously wreathed in fragrant blossoms. Weak or dead wood and faded flowers should be carefully cut away. The branches should be firmly fastened with some pliable material in the way which they are desired to grow.

**LAMARQUE.**—Snowy white, medium size, profuse bloomer, a strong, healthy grower; the best white climber for general purposes. Price, 15c and 20c each.

**MARECHAL NEIL.**—Deep sulphur yellow, large and beautifully formed buds, sweet fragrance, vigorous grower. Should be planted in warm, sunny locations. Price, 15c and 25c each.

**CLIMBING NIPHETOS.**—Pure white, long buds, similar to its parent Niphetos, excepting its robust climbing habit; plant in sheltered locations (new). Price, 25c and 35c each.

**CLIMBING PERLE DES JARDINS.**—Rich straw color, large and beautiful buds, of robust climbing habit; in other respects similar to its parent Perle des Jardins. A new rose of promise. Price, 25c and 35c each.

**REINE MARIE HENRIETTE.**—Dark crimson, very large, pointed buds, strong grower. Price, 15c and 20c each.

**FIELD-GROWN ROSES**

For planting in the early fall or winter, dormant Field-Grown Roses are the most suitable. Having stronger branches and roots they are in better condition to resist the vicissitudes of the season, and quickly start into vigorous growth. It is our custom every spring to plant out many thousands of small roses and carefully cultivate them for this trade. Our stock this season is particularly fine, and all those who purchase will surely be pleased. Strong plants, each, 35c; ten, \$2.25; per 100, \$20.00.

LA FRANCE	AMERICAN BEAUTY
PAPA GONTIER	DUCH. DE BRABANT
METEOR	ELIZA SAVAGE
THE QUEEN	SAFRANO
GLORIE DE MARGOTTEN	LAURETTE
MME. CHED. GUINNESSAU	SOUV. D'UN AIMÉ
MME. HOSTE	WHITE BANKSIA
MME. DE WATTEVILLE	PRESIDENT
CLOTHILDE SOUPERT	MAGNA CHARTA
GEN. JACQUEMINOT	

**COLLECTIONS OF ROSES**

The following collections have been arranged to facilitate the selecting of varieties by those who are not familiar with the most desirable sorts. An opportunity is also given those who desire to secure a nice assortment at reduced rates. No particular variety or varieties are guaranteed, but whenever there accompanies the order a statement of the purpose for which the roses are desired, the collection will be made to conform as nearly as possible to the wishes of the purchaser. None but the best varieties are used in the collections.

	2¼ to 4 in. pots	Field Grown
No. 1, 5 plants.....	65c	\$1 00
No. 2, 10 " .....	\$1 25	1 75
No. 2, 20 " .....	2 25	3 00

## CHRYSANTHEMUMS

For centuries past the Japanese have regarded the Chrysanthemum with a peculiarly intense national love. Gradually it has won its way in our own country, until to-day it is only second to the rose in popularity. During the last few years wonderful strides have been made in the production of new varieties, many of them being so unique and varied in color and fantastic in form, as to baffle the skill of the artist in description.

Chrysanthemums come at a time of the year when other flowers are the scarcest, even roses in the open ground having ceased to bloom. They have a flowering season extending over a period of several months, and the expanded flowers last a long time either on the bush or when cut. No garden is complete without its collection of these beautiful flowers. We have taken great care to have our plants true to name and to discard all unworthy sorts.

Chrysanthemums, whether grown in pots or open ground, should have rich soil and be kept growing continuously. A sunshiny, sheltered location is best. Plenty of water should be given, and as the flowering season approaches, regular applications of weak manure water should be made. If very large show flowers are desired, cut away all side shoots, leaving only one or two of the strongest stems and as many buds. The most satisfactory way is to pinch back the small plants to induce vigorous, bushy growth; allow a number of strong shoots to remain, from which remove from one-half to two-thirds of the flower buds. The result will be an abundance of large-sized flowers.

Please write both the name and number of the variety plainly in ordering.

For 1892 varieties see Novelties.

Plants ready for shipment March 1st.

### CHRYSANTHEMUMS INTRODUCED IN 1891

This list contains the choicest of all the varieties introduced last year, all of which we have flowered.

124. **CLARA REIMER.**—White, with lavender markings, fine for pot culture. Price, 15c each.

122. **WILLIAMS WHITE.**—Pure white, reflexed petals, full center. Price, 15c each.

129. **MRS. FRANK THOMPSON.**—White, with pink markings, incurved, broad petals, immense size. Price, 15c each.

130. **MIKADO.**—Bright terra-cotta red, light shading, large and distinct. Price, 20c each.

133. **MME. LOUISE LANGLOS.**—Delicate lavender, dwarf grower, incurved. Price, 20c each.

189. **EMMA DORNER.**—Deep violet pink, pure color, ball-shaped. Price, 40c each.

202. **LIZZIE CARTLEDGE.**—Dark rose, reverse of petals silvery white, reflexed. Price, 30c each.

203. **MRS. KENDAL.**—Rich Jacqueminot red, reverse of petals bronzy gold, compact center. Price, 30c each.

204. ANNA M. WEYBRECHT.—Pure white petals, broad and solid. Price, 25c each.
206. JOHN FIRTH.—Soft, silvery pink, cup-shaped, built-up center. Price, 40c each.
207. MATTIE C. STEWART.—Clear bright yellow, broad, flat petals, reflexed. Price, 35c each.
208. LILY BATES.—Clear bright pink, petals broad, distinct. Price, 30c each.
209. MRS. D. D. FARSON.—Rich silvery pink, large, compact forms. Price, 35c each.
210. CHAUNCEY LLOYD.—Delicate flesh pink shading to white, incurved, long ray-like, sword petals. Price, 30c each.
220. KATE RAMBO.—Pure white, large flowers, petals slightly incurved at tips, distinct. Price, 30c each.
221. OETA.—Outer petals dashed with rose, center, light yellow, incurved. Price, 40c each.
223. YONITZA.—White, tinted with green, perfect incurved, dense built-up center. Price, 30c each.
224. J. V. FARWELL.—Lavender without, inside of petals rosy violet; fine keeper. Price, 40c each.
225. ROBERT FLOWERDAY.—Upper surface of petals bright crimson-like, reverse silvery pink, large, outer petals incurved. Price, 35c each.
229. EL DORADO.—Rich, deep, yellow, incurved, broad petals, strong stems, keeps finely when cut. Price, 30c each.
211. MRS. R. J. BAYLIS.—Clear yellow marked with red, bronze and old gold, incurved, petals an inch wide, one of the largest. Price, 40c each.
260. KING OF CHRYSANTHEMUMS.—New seedling, incurved, broad petals, fine. Price, 40c each.
261. PRINCE OF CHRYSANTHEMUMS. Flesh pink, incurved, tubular petals, beautiful. Price, 40c each.
263. GOLDEN GATE.—Bright yellow, reflexed petals, full center, fine. Price, 40c each.
200. LOUIS BOEHMER.—Clear lilac, incurved, petals feathered like those of Mrs. Alpheus Hardy, but a better flower and stronger grower; no collection is complete without it. Price, 25c each.
137. MME. ALFRED CARRIERE.—Milky-white globular flowers. Price, 25c each.
133. SABINE MEA.—Golden yellow, large, globular flowers. Price, 20c each.
139. VICE-PRES. AUDIGUIER.—Soft rose petals tipped with white, very large, broad petals. Price, 40c each.
140. MME. CAMILLE RICHARD.—Light rose, center old gold, large, imbricated flower. Price, 30c each.
146. CESARE COSTA.—Peculiar shade of red, large flowers. Price, 40c each.
160. M. R. OWEN.—White-shaded rose, twisted petals. Price, 25c each.
162. CLEOPATRA.—Chamois-shaded rose, broad petals. Price, 25c each.
164. M. HARRY LAING.—Light rose, golden center, tubular petals, very early. Price, 20c each.

173. **MME. ED. LEFORT.**—Reddish, lacinated petals, tipped with yellow. Price, 20c each.
251. **SEC. GEN. CASSVIGNEAU.**—White-shaded rose, very large. Price, 40c each.
255. **MME. MARIE MAWVET.**—Deep yellow, shaded and spotted with red. Price, 30c each.
257. **MASSALIA.**—Deep red, broad petals. Price, 25c each.
259. **ALBERIC LUNDEN.**—Rich crimson, recurved petals, large. Price, 25c each.
175. **FLORA HILL.**—Pure white, center creamy, heavy texture, one of the best. Price, 40c each.
176. **EMILY DORNER.**—Rich orange yellow, touched with crimson, incurved petals, sturdy dwarf grower. Price, 40c each.
180. **ELMER D. SMITH.**—Cardinal red, back of petals clear chamois, large size. Price, 40c each.
181. **JOHN GOODE.**—Outer petals delicate lavender, clear lemon center, globular, silky finish. Price, 40c each.
184. **SUGAR LOAF.**—Varying shade of yellow, sometimes bronzy, outer petals recurve, center incurve, strong grower, free bloomer. Price, 40c each.
186. **FRANK THOMPSON.**—White, pearly pink at base of petals, incurved, globular, fine. Price, 40c each.
187. **MRS. I. D. SAILER.**—Soft shell pink, incurved, sharply pointed petals, tipped with lemon, globular. Price, 40c each.
188. **AUGUST SWANSON.**—Bright scarlet lined with old gold, fine for pots. Price, 40c each.
190. **ROBERT MAITRE.**—Clear delicate pink, large and symmetrical, a good keeper when cut. Price, 40c each.
177. **MISTLETOE.**—Exterior of petals silvery white, crimson inner lining, broad petals, globular. Price, 40c each.
182. **MERMAID.**—Delicate pink, incurved, daintily finished. Price, 40c each.
178. **ANNA DORNER.**—Rich carmine, striped and shaded, creamy white center, bold flower. Price, 30c each.
606. **LEOPARD.**—Dark pink, curiously dotted with white, very distinct. Price, 20c each.
607. **SULPHIDE.**—Yellow, incurved, fine grower and bloomer. Price, 15c each.
608. **J. M. JORDAN.**—Pure white, reflexed petals, large and fine. Price, 25c each.
143. **TYRO.** Light fawn color, high flower, broad petals, strong grower. Price, 20c each.
143. **W. W. LUNT.**—Lemon yellow, large, massive flowers. Price, 35c each.
154. **DELAWARE.**—White, pale yellow anemone center, large and fine. Price, 25c each.
256. **JNO. DYER.** Chrome yellow, petals striped with red lines, strong grower, flowers great substance. Price, 35c each.
142. **MINERVA.**—Light pink, single, needle-like tubular petals, tips deeper shade. Price, 25c each.



163. ULYSSES.—Magenta, outside of petals deep lilac, incurving, large yellow eye. Price, 25c each.
264. YELLOWSTONE PARK.—Clear yellow reflexed petals, delicate feathery form. Price, 49c each.
271. PACIFIC WAVE.—White, single free bloomer, fine. Price, 40c each.

### GENERAL COLLECTION OF CHRYSANTHEMUMS

Fifty plants, our selection, good varieties and colors, \$6.00.  
Price, 15c each except where noted.

#### WHITE VARIETIES

1. ADIRONDAC.—Large, white flowers, incurved, strong grower and free bloomer; a splendid variety. Price, 20c each.
6. MRS. ALPHEUS HARDY.—Pure white, incurved, reverse of petals thickly set with feathery-like hairs; very remarkable; a most beautiful flower. Price, 20c each.
10. NYMPHIA.—Pure white, sweet-scented; a novelty. Good for growing in pots. 25c each.
13. BELLE POITEVINE.—White, incurved, very early.
14. BRIDE.—White, incurved, drooping petals; one of the best.
15. CHRISTMAS EVE.—Pure white, incurved; a good late variety.
17. DOMINATION.—Creamy white; good size. Price, 20c each.
18. EMPRESS OF JAPAN.—White, long, graceful petals, incurved; large and beautiful. Price, 20c each.
21. INTERNATIONAL.—Ivory white, large and full.
22. JUDGE REA.—Pure white, broad petals, yellow center.
23. L. CANNING.—Pure white, long, broad petals, free grower; one of the best.
24. MME. DREXEL.—White, tinted with rose. Price, 20c each.
25. MME. LOUISE LE ROY.—White, incurved creamy center, free flowering. Price, 20c.
26. MARVEL.—White, maroon spot in center, a fine variety. Price, 20c each.
27. MISS ANNIE HARTSHORN.—Pure white, incurved, very large. Price, 20c each.
28. MISS M. WANAMAKER.—Creamy white, incurved, perfect ball, fine variety. Price, 25c each.
29. MOUNTAIN OF SNOW.—Pure white, large and beautiful, fine for exhibition.
30. MOLLY BAWN.—Pure white, large and irregular, beautiful. Price, 25c each.
31. MRS. LANGTRY.—Pure white, outside petals quilled, very large and beautiful flowers.
33. MRS. SAM'L HOUSTON.—Pure white, incurved, large and fine.
35. PRINCESS TECK.—White, suffused with pink, incurved. Price, 25c.
36. PELICAN.—Pure white, large, long, broad, curled florets, fine. Price, 25c each.
122. WILLIAMS WHITE.—Pure white, reflexed petals, full center, one of the best.

### SHADES OF YELLOW

4. **HARRY E. WIDENER.**—Pure, bright lemon yellow, incurved, petals crisp and stiff, long, erect stems; flowers average 10 to 11 inches in diameter; finest yellow for cut flowers. Price, 25c each.

11. **RAMONA.**—Bright amber, incurved, large and full; petals or florets numerous, long, slender and tubular. Price, 20c each.

42. **BETTINA.**—Clear orange, long petals, early and lasts well.

43. **CALIFORNIA.**—Rich yellow, incurved; a perfect ball, long early.

45. **COMTE DE GERMINY.** Nankeen yellow, large and novel.

46. **EDWIN H. FITLER.**—Brilliant yellow, slightly streaked with red, large and fine.

48. **GOLD.**—Pure yellow, flowers large, fine for cutting in sprays.

49. **GRANDIFLORUM.**—Pure golden color, petals broad, incurved, solid ball, fine variety.

50. **HENRY CANNELL.**—Golden yellow, incurved, ball-shaped, stems.

52. **JOHN COLLINS.**—Yellow, orange shading, large and full.

53. **JOHN WEBSTER.**—Light orange.

56. **MAGICIENNE.**—Light lemon color, tubular petals, large, spreading flowers, early.

57. **MRS. C. H. WHEELER.**—Orange yellow, outer side of petals crimson, flowers very large and heavy.

62. **MISS MARY WEIGHTMAN.**—Chrome yellow, loose feathery form, large and full.

63. **MRS. A. WATERER.**—Rich yellow, base of petals pink.

65. **MRS. W. K. HARRIS.**—Rich chrome yellow; one of the finest yellows.

69. **SUZON.**—Clear orange, reflexed petals.

70. **SOURCE D'OR.**—Orange gold shading, twisted-recurved petals.

73. **VIELE. D'OR.**—Deep yellow, fine large flowers.

74. **W. H. LINCOLN.**—Golden yellow, flat, spreading petals of great substance, very large, incurved. Price, 25c each.

75. **YELLOW BIRD.**—Soft yellow, long petals. Price, 20c each.

### SHADES OF PINK

7. **MRS. IRVING CLARK.**—Margin of petals pearly white, shading to deep rose, center beautifully whorled; large and fine. Price, 20c each.

8. **MRS. LEVI P. MORTON.**—Bright pink, base of petals white, unique appearance; should be in every collection. Price, 20c each.

9. **MRS. FOTTLER.**—Soft rose, incurved, long-pointed petals; large, fine for cut flowers. Price, 20c each.

2. **ADA SPAULDING.**—Delicate shade of pink, incurved; a beautiful flower. Price, 20c each.

3. **HARMAN PAYNE.**—Deep rose, very large flower, long petals. Price, 20c each.

77. **EXCELLENT.**—Rosy pink, large flowers; fine for cutting.

73. **ELKHORN.**—Rich peach color, incurved, segregated petals; very fine.

79. FRED HART.—Peach color, incurved, large.  
 80. J. N. GERARD.—Pink, one of the best of its color.  
 84. LILLIAN B. BIRD.—Beautiful shade of pink, very large, tubular petals; one of the best.  
 85. MRS. A. BLANC.—Rich lavender, inside florets, erect, strong grower.  
 89. MRS. MARY MORGAN.—Soft blush; beautiful, perfect flower.  
 93. ROSE QUEEN.—Bright rose, a fine variety.  
 94. T. C. PRICE.—Strawberry, cream color, petals twisted, incurved, large.

### SHADES OF RED

99. CULLING FORDII.—Brilliant crimson, under side of petals old gold; one of finest. Price, 20c each.  
 101. E. W. CLARK.—Rich peony red; large and fine. Price, 20c each.  
 107. MRS. WM. HOWELLS.—Crimson, reflexed; fine for pot culture.  
 103. MRS. CANEGIE.—Velvety red, incurved, large, broad petals.  
 109. MONTEZUMA.—Light red, outer side of petals striped with gold, yellow center.  
 110. MRS. J. T. EMLIN.—Blood red on upper side of petals, reverse old gold.  
 111. MONTAUK.—Crimson maroon, flat petals showing yellow center, large.  
 112. MRS. A. HAIG.—Dark red, large, full in center.  
 113. MRS. WM. BOWEN.—Red and gold, free grower and bloomer.  
 114. MRS. GEORGE.—Dark red, good grower.  
 115. OCEOLA.—Bright red, reverse pale yellow, twisted petals, large, irregular flower.  
 116. ROTHWELL HYDE.—Red, shaded with yellow, large flowers.  
 5. JOHN THORP.—Rich deep lake, long, broad petals, few tubular petals in under row, flowers large; early bloomer and vigorous grower. Price, 25c each.  
 12. W. W. COLES.—Terra cotta, whorled center; a popular variety. Price, 20c each.

### FERNS

Ferns are a beautiful class of plants that are each year increasing in public estimation. Indeed, there are but few more beautiful sights than well grown specimens of the varieties offered, possessing, as they do, the highest order of graceful delicacy of foliage.

The ferns offered are the sorts most useful in the cut flower trade. They should be grown in pots in shaded or partly shaded locations, and should be kept constantly moist without having the soil soggy. A season of rest should be allowed, the proper time being indicated by the foliage.

Fine, large plants, prices upon application.

**ADIANTUM CUNEATUM.**—The very best variety for general purposes; large, beautiful fronds; fine for cutting.

**ADIANTUM FARLEYENSE.**—This may be called the queen of maiden-hair ferns; pinnules are large and delicate, and of an exquisite shade of soft pale green, large and graceful fronds; rare and beautiful.

## CARNATIONS

Carnations are so universally planted and admired that a general description seems hardly necessary. They are so easily grown in all parts of California, embrace such a diversity of beautiful shades and colors, and have such a delightful fragrance, that no garden is complete without its bed or border of carnations.

We take particular pride in our collection, which is the choicest to be found in California. Only those varieties are offered which have been thoroughly tested, and are adapted to general planting.

Carnations will thrive in any good garden soil, the richer the better, but fertilizers should never be brought in direct contact with the plants. Long, straggly shoots or over-vigorous growths should be stopped by pinching until a strong, bushy, symmetrical plant is formed, when flower shoots may be allowed to grow; give plenty of water when growing vigorously and when flowering.

We offer the following from 2½ in. pots (strong plants ready in March, larger plants later):

For 1892 varieties see Novelties.

Price, our selection 10 choice sorts, \$1.25.

**GOLDEN GATE.**—Pure yellow, the finest of its color, full and double, a vigorous and healthy grower, better than Buttercups. Price, 20c each.

**WM. F. DREER.**—Carmine pink, deeply fringed, free, strong grower, one of the best new varieties. Price, 20c each.

**J. R. FREEMAN.**—A rare shade of rich carmine, early and free bloomer, very fragrant; long stems. Price, 20c each.

**LIZZIE McGOWAN.**—Pure white, very large, full and heavy, compact grower; cut flowers keep finely. Price, 20c each.

**DAYBREAK.**—Clear, bright, flesh color, without shading; long single-flower stems, very large and full. Price, 30c each.

**FRED DORNER.**—Clear, deep scarlet, a soft but brilliant shade, very large, heavy and double if ringed, fine grower, one of the best. Price, 25c each.

**EDWIN LONSDALE.**—Exquisite shade of light pink, large, heavy camelia-shaped flowers, stems a foot long. Price, 25c each.

**ANNIE WIEGAND.**—Clear, delicate pink, long, stout stems, an early and free bloomer. Price, 25c each.

**CREOLE.**—Velvety maroon, occasionally flaked with carmine, strong stems, healthy plant. Price, 25c each.

**WHITE WINGS.**—Purest white, petals heavy, silvery surface, large, lightly fringed, profuse bloomer. Price, 25c each.

**MRS. HARRISON.**—White, sometimes pencilled with light scarlet, long stems, free flowering. Price, 20c each.

**MOTOR.**—Salmon, flaked with carmine; a novel color. Price, 20c each.

**SILVER SPRAY.**—Pure white, stiff upright stems; early and free. Price 25c each.

**B. A. ELLIOTT.**—Brilliant vermilion scarlet. Price, 10c and 15c each.

**BLACK KNIGHT.**—Very dark crimson, nearly black sometimes, one of the best of the dark varieties. Price, 15c each.

**COL. P. WILDER.**—Deep rich scarlet, large and fine. Price, 20c each.

**FERDINAND MANGOLD.**—Bright dark red, large and beautiful flowers. Price, 15c each.

**GFACE WILDER.**—Soft shade of rosy pink; one of the most beautiful of the pink carnations. Price, 10c and 15c each.

**HEINZE'S WHITE.**—Pure white, large flowers, free bloomer, one of the best whites. Price, 10c and 15c each.

**J. J. HARRISON.**—Pearly white, delicately streaked with rosy carmine. Petals edged with carmine, fine grower and bloomer. Price, 10c and 15c each.

**L. L. LAMBORN.**—Pure white, flowers deeply fringed and of immense size; calyx does not burst; very free bloomer, one of the best. Price, 10c and 20c each.

**LU LU.**—Pretty shade of pink, fine for growing in pots. Price, 10c and 15c each.

**PORTIA.**—Intense flaming scarlet, vigorous grower, flowers freely produced on long stems; one of the best. Price, 10c and 15c each.

**PRESIDENT GARFIELD.**—Beautiful crimson scarlet, very large flowers; a fine variety. Price, 10c and 15c each.

**PRIDE OF PENHURST.**—Pure sulphur yellow, large, very double. Price, 10c each.

**ROBERT CRAIG.**—Brilliant scarlet, fine grower, good-sized flowers. Price, 10c and 15c each.

**STARLIGHT.**—Primrose yellow, a novel color; a beautiful variety. Price, 10c and 15c each.

**SUNRISE.**—Orange, flaked with crimson, very large and beautiful, does not burst its calyx, long stems. Price, 20c each.

**SPRINGFIELD.**—An exquisite shade of delicate pink, very pretty and sweet. Price, 10c and 15c each.

**WILLIAM SWAYNE.**—White, a fine free bloomer. Price, 10c and 15c each.

**AMERICAN WONDER.**—Bright rose pink; a fine flower. Price, 10c each.

**KELLOGG TERRACE.**—Pink and white striped; novel and pretty. Price 10c each.

**DOLLY VARDEN.**—Salmon pink, an odd and pretty, striped variety. Price, 10c each.

**CENTURY.**—A delicate shade of pink, exquisitely beautiful. Price, 10c each.

**CRIMSON KING.**—Very dark crimson, fine, upright flower. Price 10c each.

**MRS. DE W. SMITH.**—Pure white, good bloomer and grower. Price 10c each.

**MISS JOLLIFFE.**—Delicate shade of flesh pink, highly prized. Price 10c each.

**PETER HENDERSON.**—Clear white, one of the best of the color. Price 10c each.

**W. W. COLES.**—Bright scarlet, free bloomer; a popular sort. Price 10c each.

**SNOWFLAKE.**—White, large, finely formed flower. Price, 10c each.

## SWEET PEAS

Sweet peas have justly been classed among the most artistically beautiful and sweetest of flowers. To foster the growing taste and meet the popular demand for this beautiful flower, we annually, at considerable trouble and expense, collect all of the newest and best varieties from both Europe and the United States, and after carefully testing them, offer the finest to our customers. So great has the demand grown for our unrivalled collections that about five acres are each year devoted to their culture.

Only the choicest novelties and standard varieties are offered in the appended list. These Sweet Peas should not be confounded with the ordinary stock sorts sold by seedsmen. None need hesitate to order, as their great beauty, size, sweetness and vigor of growth cannot fail to give the greatest satisfaction. Sow the seed in good garden soil from October to April, at intervals, for a succession of flowers. Do not allow them to suffer for water and give some slight support. Do not allow flower spikes to go to seed, as it will greatly shorten the flowering season.

### NOVELTIES 1891-92

Price, per package, 25c. except where noted; a package contains about  $\frac{1}{2}$  oz.

**CAPTAIN OF THE BLUES.**—Standards bright purplish blue, with pale blue wings; a striking color.

**DELIGHT.**—Wings white, standards white, beautifully crested with crimson; small but pretty; dwarf habit.

**ECKFORD'S NEW MIXED STRAIN.**—Saved from choice named varieties, including many of great merit. Price, 20 cents per packet.

**EMPRESS OF INDIA.**—Clear rosy pink standards and white wings; large and handsome.

**MISS HUNT.**—Pale carmine, salmon standards, with soft pink wings; distinct and beautiful.

**MRS. GLADSTONE.**—Delicate pink standards, wings blush, edged with delicate pink; a singularly beautiful variety.

**MRS. SANKEY.**—Pure white, a large, bold flower. A great improvement on white varieties. Should be in every garden.

**PRIMROSE.**—The nearest approach to a Yellow Sweet Pea, quite novel and distinct in color; the standards and wings pale primrose yellow. Price, 50c per packet.

**PURPLE PRINCE.**—Maroon standards, shaded with bronze and purple, blue wings; very distinct.

**QUEEN OF ENGLAND.**—White, of large size and good substance.

### VARIETIES 1890

Price per packet, 15c. Set of 12 varieties, \$1.50.

Choice mixed varieties per packet, 10c.

**ALBA MAGNIFICA.**—Pure white, very chaste and beautiful.

**APPLE BLOSSOM.**—Standards bright rosy pink, standards blush.

**BUTTERFLY.**—White and lilac; very pretty.

**BOREATTON.**—Dark crimson purple, wings shaded with rose.

**CARDINAL.**—Crimson scarlet, fine grower and bloomer.

**DUCHESS OF EDINBURGH.**—Light scarlet and crimson, marbled and splashed with creamy white.

**ISA ECKFORD.**—Creamy white, suffused with rosy pink.

**NELLIE JONES.**—White and light pink, exquisitely delicate.

**ORANGE PRINCE.**—Orange pink, flushed with scarlet.

**PRINCE OF WALES.**—White ground, shaded and striped mauve.

**RED AND WHITE.**—White ground, clear bright red stripes.

**THE QUEEN.**—Rosy pink and light mauve; a charming contrast of colors.

## PELARGONIUMS

Pelargoniums, or Lady Washington Geraniums as they are sometimes called, grow and blossom with remarkable luxuriance in California, particularly in the coast counties. They furnish at nearly all seasons of the year, a profusion of flowers, whose unique colorings it is most difficult to describe. Pelargoniums are among the most satisfactory flowers that can be planted, as they grow vigorously for years, and require but little care when once established.

Plant in warm, sunny, well-drained locations, in good soil, pinch in over-vigorous shoots to keep the plant symmetrical. Keep faded flowers cut off and give water sufficient to keep them growing.

All of the varieties offered are so beautiful that it may prove quite difficult to select a few sorts.

The whole collection will be sent at the reduced rate of \$6.00; price, single plants, 40 cents each. Stock on hand is extra large and fine, but is in limited supply. Orders will be booked for younger stock for future delivery at much reduced prices.

**BEAUTY OF OXTON.**—Upper petals, rich maroon; lower petals, dark crimson, maroon shading, light center; petals, crimped, edged with white.

**DOCTOR MASTERS.**—Upper petals, nearly black, shading to rich crimson margin; lower petals, small blotch, broad margin.

**DUCHESS OF BEDFORD.**—Pure white, delicately veined and shaded with clear rose.

**EMPRESS OF INDIA.**—White, shaded with rose; large flower.

**GLORIE DE TOURS.**—Orange, with large, dark blotches.

**GLORIA PATRIA.**—White ground, crimson shadings on upper petals.

**GOLDEN GATE.**—Lower petals, light, margined with vermilion; upper petals, dark.

**KEYSTONE BEAUTY.**—Petals light, with dark markings.

**LOUISE ORNER.**—White, with delicate wine-red shadings.

**LORD CLYDE.**—White, with maroon blotches.

**MRS. JOHN SAUL.**—Rich glowing vermilion, light center, light margin to petals; large trusses.

**MME. VIBERT.**—Vermilion and white, with dark, velvety blotches.

**MME. THIBAUT.**—White ground, richly blotched with crimson.

**MRS. COUPLAND.**—Perle white, very slight purple veins in upper petals; a magnificent sort.

**OCCIDENT.**—Ground color, a delicate pink; upper petals, very dark.

**PRINCE OF PELARGONIUMS.**—Soft, clear pink ground, with maroon blotches.

**PRINCE OF WALES.**—Bright vermilion, with light center and edges; very free-flowering.

**QUEEN VICTORIA.**—Rich vermilion, petals broadly margined with pure white, the upper blotched with bright maroon; petals peculiarly crispy, giving appearance of being double.

## VIOLETS

The sweet, modest Violet has won a warm place in the affections of the people of California. It is particularly popular on account of the ease with which it can be grown, the large size and abundance of the flowers produced and the long flowering season:

Our violet fields are about five acres in extent and are by far the largest and finest in the United States.

Violets delight in a partially shaded location and during the growing and blooming season should not lack for water. If large, fine flowers are desired, the plants must be given plenty of room and kept free from runners. All the varieties make pretty borders.

Strong, healthy plants. Price per 10, 45c, per 100, \$3.00.

**SWANLEY WHITE.**—Finest double white, very sweet; should be given more sunlight than the purple varieties, as the flowers are liable to a greenish tint when too much shaded.

**MARIE LOUISE.**—Dark purple, very large, double and sweet, profuse bloomer, and regarded by many as the finest of all double violets.

**NEAPOLITAN.**—Light purple, large, double and deliciously sweet, profuse bloomer.

**THE CZAR (Russian)**—Single purple, very dark and sweet; vigorous grower, flowers borne on long, erect stems; preferred by some to any other violet.

## PALMS

No class of plants adds so much to the tropical beauty of California gardens as the stately but ever-graceful palms. They are among the noblest and most admired of trees, in every country in which they thrive. For grand avenues or landscape effects they are unexcelled. Plant them in good soil, and give plenty of water the first year until the roots become established. The ground should be occasionally loosened and pulverized.

**CHAMÆROPS EXCELSA.**—An upright, symmetrical-growing fan palm, deeply notched leaves, hardy; one of the finest lawn decorative plants. Price, 50c each, \$35.00 per 100.

**PHOENIX (Date Palm)**—Several varieties of this most graceful palm are offered; all of them have long, recurved, pinnate fronds, and are hardy. Price, 50c and \$1.00 each.

**SEAFORTHIA ELEGANS.**—One of the most graceful decorative plants for the conservatory or for very warm, sheltered locations in the open ground; fronds broadly pinnated and of a rich green color; 6 inch pots. Price, 75c each.



**PRITCHARDIA FILIFERA.**—Our native California palm, very large, deep green, fan-shaped leaves; rapid grower and hardy; fine for avenue planting or as single specimens on the lawn.

Price of strong plants from open ground, 1½ to 2 feet, 50c each, \$35.00 per 100.

**LATANIA BORBONICA.**—Glossy, drooping, fan-shaped leaves. The most beautiful and useful of palms for house decoration. Price, \$1.25 each.

**DRACÆNA AUSTRALIS.**—A palm-like tree that grows particularly well in California, very tenacious of life, fine for streets and tropical effects in limited areas. Price, \$1.00 each.

**PALM SEEDS.**—Varieties and prices upon demand.

## SHADE AND ORNAMENTAL TREES

Nothing adds more to the attractions of a home than an abundance of shade and ornamental trees, not only are they valuable for the grateful shadows which they cast, but they give an air of dignity and permanence to the grounds that even the choicest flowers cannot give. Every driveway and public roadside should be lined with trees. Our trees are straight, finely formed and just the very best size for transplanting.

**ASH, WHITE.**—(Deciduous), a graceful, rapid growing tree, 4 to 5 feet. Price, 20c each, \$14 per 100.

**CATALPA-SPECIOSA.** (D).—Rapid growing, large-leaved tree, large spikes of flowers; 5 to 6 feet. Price, 30c each; \$14.00 per 100.

**CATALPA-BIGONOIDES.** (D).—Very similar to Speciosa in growth, flowers darker in color, long, bean-like seed pods; 4 to 6 feet. Price, 30c each; \$14.00 per 100.

**MAPLE.** (D)—Ash leaved; a beautiful, compact growing maple; 6 to 8 feet. Price, 25c each; \$15.00 per 100.

**ALIANTHUS GLANDALOSA.** (D).—(Tree of Heaven); a wide spreading pinnate foliated tree of rapid and stately growth; 8 to 10 feet. Price, 25c each; \$13.00 per 100.

**PEPPER TREE.** (Evergreen).—By many considered the most graceful and beautiful of all trees, drooping fern-like branches and leaves, long and numerous clusters of bright red berries; in pots, 6 to 9 feet. Price, 75c each. 1 foot in boxes, \$8.00 per 100.

**ACACIA-SOPANTHA.** (E).—Graceful yellow flowering tree. Price, 40c each.

**FICUS-AUSTRALUS.** (E).—One of the noblest of shade trees, large smooth leaves, hardy in most parts of California. 2½ feet. Price, 75c to \$1.00 each.

**GREVILLEA ROBUSTA.** (E).—Sometimes called the fern tree from its fern-like foliage, very peculiar yellow flowers. 3 to 4 feet. Price, 40c each.

**EUCALYPTUS.** (E).—Several varieties in pots, from 2½ to 3 feet in height. Price, 20c each.

**MAGNOLIA-GRANDIFLORA.** (E).—The grandest of America's flowering trees, immense white flowers and glossy leaves. 3 feet. Price, \$1.50 each.

**TEXAS UMBRELLA TREE.** (D)—Rapid growing, symmetrical, dense shade, 5 to 7 feet. Price, 50c each; \$4.00 for 10.

## EVERGREENS

We offer only a few of the choicest of our evergreens, but can furnish other varieties upon application.

**ARBOR VITÆ.**—Giant; one of the best growers and handsomest of the arbor vitæ. Price, 25c; per 10, \$2.00.

**CYPRESS.**—Bald; one of the most beautiful and graceful of evergreens; 2 to 3 feet. Price, each, 25c; per 10, \$2.00.

**CYPRESS.**—Italian; a slender compact growing evergreen, largely used in cemeteries, etc.; 4 to 5 feet. Price, 35c each; \$16.00 per 100.

**CYPRESS.**—Lawsons; this is perhaps the most beautiful of all the cypress varieties, exceedingly graceful, should be planted where it will have plenty of room; 2 to 3 feet. Price, 30c each; \$2.00 per 10.

**CYPRESS.**—Funeral, a graceful, weeping evergreen, 3 to 4 feet. Price, 50 cents each.

**CYPRESS.**—Monterey,  $\frac{1}{2}$  to 2 feet. Price, 25 cents each; \$2.00 per 10. One year, transplanted in boxes (for hedges). Price, \$4.00 per 100; \$30 per 1,000.

**ARAUCARIA.**—Bidwelli; one of the most beautiful and hardiest of the araucarias, small imbricated foliage. 2 feet. Price, \$2.50 each.

**CEDRUS.**—Deodora; considered by many the most elegant of evergreens. 2 to 3 feet. Price, \$2.00 each.

**CEDRUS.**—Lebanon; the noble tree referred to in the bible. 2 to 3 feet. Price, \$2.00 each.

**CRYPTOMERIA.**—Japonica. 3 to 4 feet. Price, \$1.00 each.

**JUNIPER.**—Ericordas. 1 foot. Price, 40c each.

“ Glauca. Price, 75c each.

**YEW.**—Irish; a distinct and beautiful evergreen. 1 to 1 $\frac{1}{2}$  ft. Price, \$1.00 each.

**SPRUCE.**—Menzies; one of the finest spruces. 1 foot. Price, 75c each.

**LANIGERIUM.**—Pattersoni, a very beautiful Australian evergreen, 2 $\frac{1}{2}$  to 3 feet. Price, \$1.50 each.

## NATIVE TREES AND SHRUBS

In our native flora there is found many of the most beautiful of trees and shrubs, but because of their familiarity they have hitherto been sadly neglected. We are glad to note a change of sentiment in favor of our home treasures, and hereafter expect to have a steady demand for some of the most popular sorts. All of those offered are grown in pots as some of them are quite difficult to transplant from the open ground.

**REDWOOD**—(*SEQUOIA SEMPERVIRENS*.) One of the most remarkable of trees, has given many wonderful illustrations of its tenacity of life. 1 to 3 feet, 40c each, \$2.25 per 10.

**BIG TREE**—(Sequoia Gigantea.) The famous big tree of California. 3 to 4 feet \$1.50 each.

**MADRONE**—A tree of remarkably clean growth, glossy leaves, smooth cinnamon-colored bark. Price, 8 inches to 2 feet, 50c each, \$2.75 per 10.

**MANZANITA**—Considered by many the most beautiful tree of native growth, small, thick-set leaves, beautiful, smooth, red bark. Price, 8 inches to 2 feet, 50c each, \$2.75 per 10.

**RED BERRY**—(California Holly.) This beautiful shrub will grow most anywhere and yield its wealth of bright, red berries for Christmas decorations. Should be in every yard. Price, 8 inches to 2 feet, 30c each, \$2.50 per 10.

**HOLLY CHERRY**—One of the handsomest of our native trees; glossy, spiny leaves, and cherry-like fruit. Price, 50 cents each.

## SHRUBBERY

The shrubbery offered below is all easily grown and should be found in every well appointed garden.

**LAUREL**—(English.) Broad, glossy leafed, handsome shrub, 2 years old. Price, 25c each, 12 for \$1.00.

**LAUREL**—Portugal; very handsome and desirable. Price, 75c each.

**LAURESTINUS**—Well known, profuse flowering, (fine for hedges.) Price, 2 years old, 15c each, \$10.00 for 100.

**VERONICA VAR**—Leaves striped with white, flower spikes purple. Price, 20c each, \$15.00 for 100.

**EUONYMUS**—Bright, glossy foliage. Price, 20c each, \$12.50 per 100.

**ACUBA JAPONICA**—Broad, gold-specked leaves, very beautiful. Price, 30c each, \$2.00 per 10.

**LILAC**—White and purple, old fashioned, sweet-scented flowers. Price, 15c each, \$10.00 per 100.

**HYDRANGEA**—White and pink varieties, immense heads of flowers, 8 inches to 2 feet. Price, 30c each.

**HAWTHORN**—Single, white. Price, 35c each, \$2.50 per 10.

**BOX, DWARF**—Fine for hedges. Price, \$3.00 per 100.

**DIOSMA**—Alba (Breath of Heaven); sweet-scented foliage, delicate, white flowers. 1 foot. Price, 50c each.

**MYRTLE**—Communis; the well-known fragrant myrtle. 2 feet. Price, 50c each.

**PITTOSPORUM**—Tobiri; a handsome, smooth-leafed shrub, fragrant flowers. 3 feet. Price, 50c each.

**PITTOSPORUM**—Undulatum; light, silvery foliage, crimped; very desirable. 3 feet. Price, 40c each.

**PITTOSPORUM**—Nigracans, 3 to 4 feet. Price, \$1.00 each.

**PITTOSPORUM**—Variegated, 1 to 1½ feet. Price, \$1.00 each.

ESCALONIA.—Sanguinia. 2 feet. Price, 75c each.

MOCK ORANGE.—An old-time favorite; white, sweet-scented flowers, 3 to 4 feet. Price, 25 cents each.

CHEROZEMA.—Varia, a pretty flowering shrub, terminal clusters, orange-red flowers. Price, 50 cents each.

## BULBS

The following well-known bulbs, which we have in large stock, are offered in season.

TUBEROSE.—Double dwarf; large clumps. Price, 50c each.

NARCISSUS.—In variety. Price, 15c each.

LILY.—Japanese; golden-banded. Price, 35c each.

LILY.—Harisii (Bermuda Easter lily). Price, 30c each.

EUCHARIS AMAZONICA.—Large, white flowers. Price, 30c each.

VALOTTA PURPUREA.—Amayllis-like flowers, dark red. Price, 25c each.

## MISCELLANEOUS PLANTS

TACSONIA.—Rosa; a beautiful and rapid climber, large pink flowers suspended by thread-like stems; roots are best protected in winter. Price, 35c each.

YUCCA GLORIOSA.—One of the finest of the yuccas, tall spikes of white flowers. Price, 75c each.

NEW ZEALAND FLAX.—Grows in large clumps, thick, sword-like leaves, 5 to 6 feet long. Price, 35c each.

EXPRESS AND POSTAGE RATES

As an accommodation to our customers, we have compiled the following table of Express rates. By comparing the probable weight of the order when filled, with the rate per 100 pounds to the nearest office given, the amount of expressage can be very nearly arrived at. For smaller packages rates are proportionately increased.

POSTAGE upon plants and seeds to all points in the United States, 8 cents per pound; limit, 4 pounds. Mexican and Hawaiian Island points, parcels, post, 12 cents per pound; limit, 11 pounds. Canadian points, same as United States. Australian points, 1 cent per ounce; limit, 3 1/2 ounces.

EXPRESS RATES, PER 100 POUNDS

From Menlo Park to Undermentioned Points

CALIFORNIA		ARIZONA	
Alameda.....	\$0.75	Flagstaff.....	\$7.25
Amador.....	3.75	Phoenix.....	7.00
Anaheim.....	4.00	Prescott.....	8.75
Bakersfield.....	4.00	Tucson.....	6.70
Berkeley.....	.75	Yuma.....	6.50
Ceres.....	1.50		
Colton.....	4.50		
Delano.....	8.75		
Downey.....	4.00		
Felton.....	1.00		
Firebaugh's.....	2.25		
Fresno.....	2.75		
Galt.....	1.25		
Gilroy.....	.75		
Glenwood.....	.50		
Hanford.....	3.50		
Hayward's.....	.75		
Hollister.....	.90		
Huron.....	4.00		
Ione.....	1.50		
Irvington.....	.80		
Jackson.....	3.75		
Jolon.....	4.75		
King's.....	1.50		
Kingsburg.....	3.00		
Lancaster.....	4.00		
Lathrop.....	1.00		
Lemoore.....	3.75		
Livermore.....	1.00		
Lodi.....	1.00		
Lompoc {ld.....	6.00		
{sea.....	5.50		
Los Alamos.....	3.75		
Los Angeles.....	3.50		
Los Gatos.....	.75		
Los Olivas {ld.....	4.00		
{sea.....	3.50		
Madera.....	2.50		
Martinez.....	.75		
Merced.....	2.00		
Milton.....	1.25		
Modesto.....	1.50		
Monterey.....	1.00		
Mountain View.....	.50		
Marysville.....	1.00		
New Almaden.....	1.10		
Newman.....	1.50		
Niles.....	.80		
Norwalk.....	4.00		
Oakland.....	.75		
Ontario.....	4.50		
Oroville.....	1.50		
Pacific Grove.....	1.25		
Pasadena.....	4.00		
Pasa Robles.....	1.75		
Pomona.....	4.25		
Porterville.....	3.75		
Port Hartford {ld.....	3.50		
{sea.....	2.50		
Redlands.....	4.50		
Riverside.....	4.50		
Sacramento.....	1.25		
Salinas.....	1.00		
Saint Helena.....	1.35		
San Bernardino.....	4.50		
San Diego.....	4.50		
San Francisco.....	.50		
San Gabriel.....	4.00		
San Jose.....	.50		
San Leandro.....	\$ .75		
S. I. Obispo {ld.....	3.25		
{sea.....	3.00		
San Mateo.....	.50		
San Miguel.....	1.75		
San Rafael.....	1.00		
Santa Ana.....	4.00		
Santa Barbara.....	3.00		
Santa Cruz.....	.50		
Santa Margarita.....	1.75		
Santa Maria {ld.....	3.75		
{sea.....	3.50		
Santa Monica.....	4.00		
Selma.....	3.00		
Sonora.....	5.25		
Stockton.....	1.00		
Traver.....	3.00		
Tres Pinos.....	.90		
Tulare.....	3.50		
Vallejo.....	1.00		
Ventura.....	3.40		
Visalia.....	3.75		
Vacaville.....	.75		
Walnut Creek.....	1.25		
Watsonville.....	.90		
Wrights'.....	.80		
OREGON		NEW MEXICO	
Albany.....	4.50	Albuquerque.....	8.00
Ashland.....	4.25	Deming.....	6.50
Astoria {ld.....	5.25	Las Vegas.....	9.50
{sea.....	2.50	Sante Fe.....	9.00
Corvallis.....	5.00	Silver City.....	7.25
Cresswell.....	4.50		
Dallas.....	5.25		
Empire City {ld.....	9.50		
{sea.....	2.50		
Eugene.....	4.50		
Huntington.....	8.50		
Independence.....	5.25		
Linkville.....	8.75		
Medford.....	4.50		
Portland {ld.....	4.50		
{sea.....	2.50		
Salem.....	4.50		
Yaquina {ld.....	5.25		
{sea.....	1.75		
WASHINGTON		TEXAS	
Tacoma {ld.....	5.00	El Paso.....	6.50
{sea.....	2.75	Austin.....	11.00
Seattle {ld.....	5.75	Dallas.....	10.25
{sea.....	2.75	Fortworth.....	10.00
Pt Townsend {ld.....	6.50	Galveston.....	11.50
{sea.....	4.75		
Olympia.....	5.75		
Walla Walla.....	8.00		
Spokane Falls.....	10.00		
Colville.....	11.50		
Almira.....	10.00		
Ellensburg.....	6.85		
COLORADO		UTAH	
Denver.....	10.50	Ogden.....	6.50
Pueblo.....	10.50	Salt Lake City.....	7.00
		EASTERN POINTS	
		Atlanta (Ga.).....	14.25
		Charleston (S. C.).....	15.70
		Chicago (Ill.).....	13.50
		Cincinnati (O.).....	15.50
		Indianap's (Ind.).....	14.25
		Jackson (Miss.).....	12.00
		Louisville (Ky.).....	14.50
		Montgomery (Ala.).....	13.25
		Kansas City (Ks.).....	11.50
		Min'ap's (Minn.).....	15.50
		Nashville (Tenn.).....	14.75
		New Orleans (La.).....	11.50
		New York.....	15.50
		Philadelph'a (Pa.).....	16.00
		St. Louis (Mo.).....	13.00
		Tallahassee (Fla.).....	14.65
		MEXICO	
		Mexico City.....	16.50
		Monterey.....	14.25











