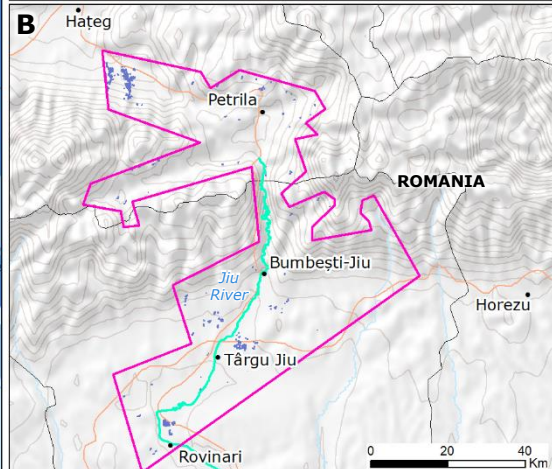
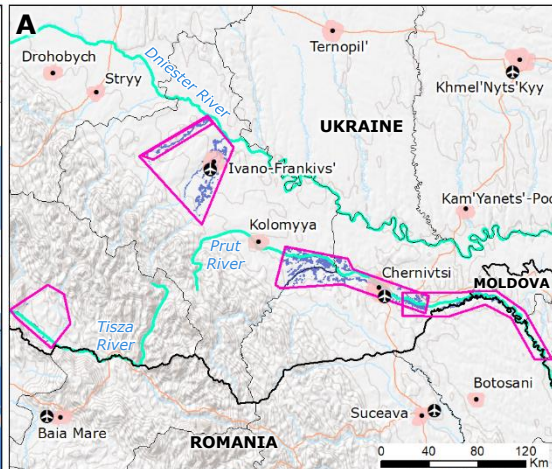
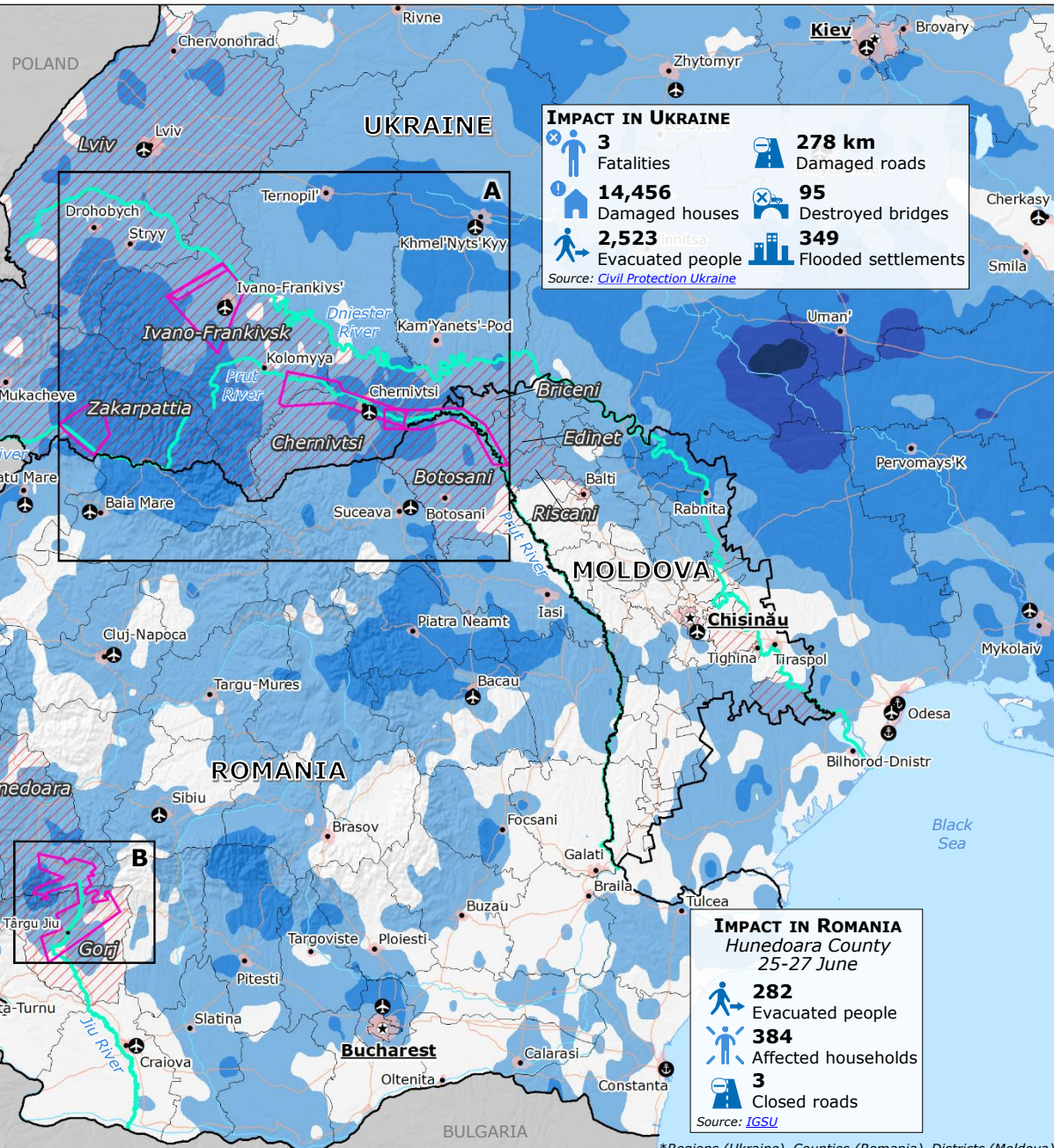


Ukraine, Romania, Moldova | Floods

UCPM RESPONSE

- On 25 June, **ERCC** received, through the UCPM Mechanism a request for assistance by Ukraine to manage the consequences of the floods.
- On 26 June, **Sweden** offered pumping equipment and flood barriers.
- On 28 June, **Italy** offered pumping equipment, personal safety equipment, chainsaws, portable power stations, tents, and one inflatable boat with engine.
- The Copernicus EMS was activated in rapid mapping mode on 22 June in Ukraine, and on 26 June in Romania. So far, 7 maps were produced in order to support the damage assessment.



Past rainfall accumulation (mm) 14-28 June
Source: NASA-GPM

- 200-400
- 100-200
- 50-100
- 25-50

Copernicus EMS
Source: EMSR444 (Ukraine), EMSR445 (Romania)

- Area of interest
- Flooded area over 25-27 June
- Urban centres (Source: JRC GHSL UCDB)
- Main roads
- Country border
- Main airport
- Main port

Administrative divisions*
 Most affected administrative divisions*
 Rivers with significant water level increase

*Regions (Ukraine), Counties (Romania), Districts (Moldova).