

Guatemala | Rainy Season 2023



IMPACT OVERVIEW

Source: [CONRED](#) as of 12 October, CONRED

- 47 Fatalities
- 17 643 Evacuated people
- 10 Missing
- > 3.3 million Affected people
- 5 Injured people
- 7 748 Damaged houses

- Monitored active volcanoes under lahar risk
 - Monitored active volcanoes
- Source: [INSIVUMEH](#)



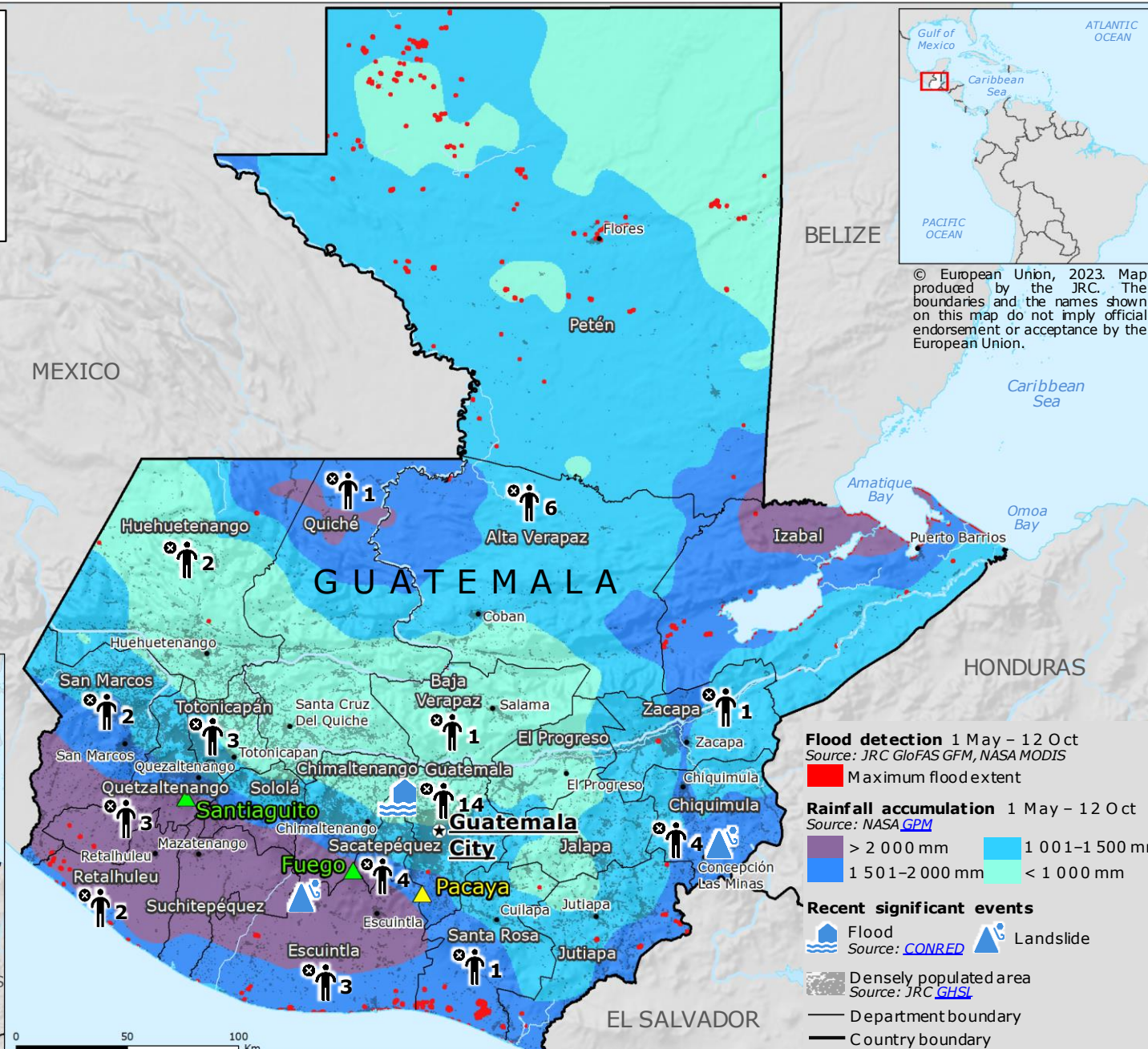
© European Union, 2023. Map produced by the JRC. The boundaries and the names shown on this map do not imply official endorsement or acceptance by the European Union.

7-day rainfall forecast

13-19 October

Source: NOAA [GFS](#)

- 101-250 mm
- 51-100 mm
- 25-50 mm



Flood detection 1 May – 12 Oct

Source: [JRC GloFAS GFM](#), [NASA MODIS](#)

Maximum flood extent

Rainfall accumulation 1 May – 12 Oct

Source: [NASA GPM](#)

- > 2 000 mm
- 1 501-2 000 mm
- 1 001-1 500 mm
- < 1 000 mm

Recent significant events

- Flood
 - Landslide
- Source: [CONRED](#)

Densely populated area

Source: [JRC GHSL](#)

- Department boundary
- Country boundary

