

Historic, archived document

Do not assume content reflects current scientific knowledge, policies, or practices.

62.61

FEB 11 1922



1922

HENDERSON'S

Wheats - Grasses - Clovers

FOR FALL SOWING

RECEIVED

Peter Henderson & Co.

35 and 37 Cortlandt Street

NEW YORK

SEP 7 1922

UNIVERSITY OF CALIFORNIA LIBRARY

Prices Subject to Change
Without Notice

HENDERSON'S

Prices Subject to Change
Without Notice

Superior Winter Seed Wheat

PEDIGREE STRAINS—CLOSELY GRADED
FREE FROM RYE, CHEAT, SMUT, GARLIC OR COCKLE

American Farmers sowing
Common Wheat are producing 15 to
18 bushels per acre

TWO FACTS

American Farmers sowing
Seed Wheat of Pedigree Strains are
producing 30 to 45 bushels per acre

It costs as much to lay down an acre of Wheat that yields only 15 bushels per acre as one that will yield from 30 to 45 bushels. The first scarcely returns the cost of the investment while the latter yields a handsome profit. In order to attain such results, sow **Henderson's Superior Seed Wheat**, which is grown especially for seed purposes, from cross-bred, select pedigree strains of undoubted superiority.

Delivery will be F. O. B. New York. Bags extra. Purchaser pays transportation on Farm Seeds. **Peter Henderson & Co.** give no warranty, express or implied, as to description, quality, productiveness, or any other matter of any Seeds, Bulbs or Roots they send out, and they will not be in any way responsible for the crop. If the purchaser does not accept the goods on these terms they are at once to be returned.

LEAP'S PROLIFIC (Beardless)

Leap's Prolific Wheat was originated about eight years ago in the Shenandoah Valley of Virginia. Since then over one hundred thousand bushels have been distributed among the wheat growers throughout the Eastern States.

The popularity that Leap's Prolific Wheat has gained during the short time since its introduction is without a parallel.

It is an extremely heavy yielder. Reports from various parts of the country give yields averaging from 41 to 46 bushels to the acre. These yields were produced not on small sample trials, but on large acreages.

Leap's Prolific Wheat is extremely hardy, it having survived and produced a perfect crop after the fields were covered with ice during the winter.

It roots deeply and stools vigorously. Only $1\frac{1}{2}$ bushels are required to sow an acre. It ripens early, with grain and straw maturing at the same time.

The heads are beardless, glistening white in color, compactly built, filled with heavy, plump, grains from base to tip. The grains are well enclosed thereby protecting them from unfavorable weather conditions and also preventing self-shelling when cutting.

The grain is large, dark red of the Longberry type. It is particularly desirable for its milling qualities.

The straw is long, stiff and very uniform, yielding a large tonnage to the acre.

Price, \$3.25 per bushel of 60 lbs.; 10-bushel lots, \$3.15 per bushel.



LEAP'S PROLIFIC WHEAT

JONES' RED WAVE (BEARDLESS)

After several years' trial this grand Wheat has fully maintained the good opinion expressed when first sent out. Customers in all winter Wheat growing sections know that the Jones' Wheats wherever sown have made a good record, and will be pleased to hear of this fine Bald Red variety. It is a cross between early Red Clawson and an unnamed crossbreed of Russian parentage. The heads are very long and broad, filled with medium, long, large, hard, dark kernels, rich in gluten. Straw, golden; above medium height, stocky, very strong, thick walled and not liable to go down; heads slightly leaning, hence not liable to sprout in the field. This variety gave a yield of 49 bushels and 2 pounds per acre in a field, the balance of which was sown to Dawson Golden Chaff that produced only 27 bushels per acre. Sow $1\frac{1}{2}$ bushels per acre.

Price, \$3.00 per bushel of 60 lbs.; 10-bushel lots, \$2.90 per bushel.

KLONDYKE (BEARDLESS)

The increasing demand for the seed of this very popular wheat would indicate it a most satisfactory variety over a large extent of territory. It is unusually productive, having yielded over 60 bushels per acre—while 50 and over is not unusual—and even on large acreages it seldom runs under 40 bushels per acre.

The straw is very stiff and does not lodge even on the richest land. The head is long and compactly filled with choice white grain, frequently having five kernels abreast. Sow $1\frac{1}{2}$ bushels per acre.

Price, \$3.00 per bushel of 60 lbs.; 10-bushel lots, \$2.90 per bushel.

RURAL NEW YORKER No. 6 (BEARDLESS)

This beardless variety is a hybrid between Rye and Armstrong Wheat, though all traces of Rye have disappeared and it now appears a handsome, beardless Wheat. It succeeds and produces heavy crops on poor, thin land, where Wheat could not be successfully or profitably grown and it also has extreme hardiness to recommend it. When first raised, some years ago, the top of the culms was downy with Rye culms. This characteristic could not be fixed, so that for this variety the culms having no down were alone selected. The gold-colored straw is very thick and strong, easily supporting the heavy grain without breaking. The large amber kernels are placed four to a breast, eight breasts to a side, with long symmetrical heads having a brown chaff. One of our growers says:

"It stools as strong as any wheat I ever saw. It had a vigorous, healthy growth all the season, and stood well without lodging. It is very hardy." Sow $1\frac{1}{2}$ bushels per acre.

Price, \$3.00 per bushel of 60 lbs.; 10-bushel lots, \$2.90 per bushel.



"BEARDLESS" RURAL NEW YORKER WHEAT.

GOLDEN WAVE (Bearded)

Golden Wave Wheat is considered by many to be the best of the bearded varieties, and there is no doubt but that it is thoroughly reliable, and will do well on either rich or poor land.

Besides being a great cropper, it stools out exceptionally well and stands up under the most trying weather conditions. The stalks of Golden Wave are all long, stiff and thick walled, and all heads are about the same distance from the ground. It is this characteristic which suggested the name, "Golden Wave" which is exactly what it looks like.

Due to its thick-walled stem and extra stiffness this variety resists rust and fly better than most others, and produces uniformly good crops, yields of more than forty bushels per acre are not at all uncommon. The heads are of great length, for a bearded variety, and often contain as many as fifty-eight grains. The berry is plump, red in color, quite large, and the chaff is amber-brown. Sow $1\frac{3}{4}$ bushels per acre. Price, \$3.00 per bushel of 60 lbs.; 10-bushel lots, \$2.90 per bushel.



**GOLDEN
WAVE
WHEAT**

thoroughly reliable on either rich or poor land

LANCASTER FULCASTER (BEARDED)

Lancaster Fulcaster is rightly one of the most popular bearded wheats. It represents the development of many years of careful selection of the old variety Fulcaster, which over a long period of years held first place as a big yielding wheat.

Lancaster-Fulcaster is a reliable yielder, year after year. In years when all conditions are against successful crops, this variety proves its reliability by making good average yields in spite of adverse conditions. There are few varieties that will do quite as well on soils of average fertility. Farmers who have not been successful in raising even fair crops of wheat on rather thin soils, should grow this variety. The change will insure them against wheat failures, and produce a satisfactory crop of straw and a surprising crop of grain.

The grain is of the finest quality, a genuine long-berry, dark red and hard. An unusual feature peculiar to this variety is that on poor soils the grain will be of full size. There is no wheat grown that is better liked by millers.

The extreme hardiness of Lancaster-Fulcaster will carry it safely through extreme winters. It has a vigorous constitution that withstands attacks of insect pests and diseases.

In the Pennsylvania State College Experimental Station's four years tests of seventeen varieties of wheat, Lancaster-Fulcaster led all bearded sorts, yielding on an average of 33.8 bushels per acre for the four years.

Lancaster-Fulcaster ripens early and produces stiff long straw with large hard dark red grain. It is well worthy the attention of any wheat grower.

Price, \$2.75 per bushel of 60 lbs.; 10-bushel lots; \$2.65 per bushel.

WINTER RYE

THE HARDIEST AND EARLIEST GRAIN CROP GROWN

Rye is a valuable crop for either soiling, green fodder, straw or grain. It is largely used by farmers to seed down with in the fall, and is considered preferable to Wheat for this purpose, as it protects the young grass and matures two weeks earlier in the summer than Wheat. It is also extensively used for fall pasture when sown early and for cutting green in late spring and early summer, but when wanted for cutting it is best sown with the Sand or Winter Vetch.

On light sandy soils where other cereal crops would be a failure, rye can be depended upon to produce fair returns. Because of its great hardiness and ability to grow upon poor land, rye is the best crop to plow under to increase the humus in the soil; but this must be done early in the spring before the rye has made much growth, otherwise it would exhaust the moisture in the soil, to the detriment of succeeding crops. A field of rye which has made good growth in the fall is often pastured with cattle or sheep for a time, and also in the spring moderately. The stock is then removed and the rye allowed to ripen. Rye is the only cereal crop, which may be thus treated without great injury.

Sow (if alone) from 1½ bushels to 2½ bushels per acre.

ROSEN RYE

A NEW LARGE YIELDING RYE THRIVES WELL ON ALL SOILS

This remarkable Rye is destined to become one of the leading varieties grown in America. It is extremely hardy due to the fact of its Russian origin.

Rosen Rye was brought to its present high state of development at the Michigan Agricultural College, where it has proven superior to all other sorts in growth and productivity.

While the average yield for rye throughout the United States is only 15 bushels to the acre, Rosen Rye has yielded up to 45 bushels to the acre.

The plant is extremely vigorous, producing a luxuriant stiff straw from large stools. On account of its vigorous stooling habit only one bushel will be required to sow an acre.

The grain of Rosen Rye is extremely attractive, plump, and heavy. It commands the highest market prices wherever offered.

One of the principal merits of this valuable grain, is that it thrives equally as well on light soils as it does on heavy soils. It has proven to be a dependable sort by producing large crops in unfavorable seasons when other kinds only gave meager yields. (See engraving.)

Price, \$2.75 per bushel of 56 lbs.; 10-bushel lots \$2.65 per bushel.

GIANT WINTER RYE

A remarkably heavy cropping Rye, having in fair tests outyielded many other varieties both in straw and grain. The straw is of uniform length, strong and of extraordinary stiffness.

Price, \$2.50 per bushel of 56 lbs.; 10-bushel lots, \$2.40 per bushel.

WINTER RYE

The variety most commonly cultivated, whether sown for grain, straw or cutting green.

Price, \$2.25 per bushel of 56 lbs.; 10-bushel lots, \$2.15 per bushel.



THE NEW ROSEN RYE

SAND OR WINTER VETCH

(VICIA VILLOSA)

THE EARLIEST CROP FOR CUTTING OR PLOWING UNDER IN SPRING
A VALUABLE UPBUILDER FOR POOR OR IMPOVERISHED SOIL



Sand or Winter Vetch is perfectly hardy throughout the United States remaining green all winter. It should be sown during August and September mixed with rye which serves as a support for the plants. When sown in spring mix with oats or barley.

It is ready for cutting a month earlier than any other fall sown forage plant, and a full crop may be taken off before planting spring crops. As a forage crop it is exceptionally valuable especially in the Northern States where Scarlet Clover winter kills. It is highly nutritious, is eaten with relish and may be safely fed to all kinds of stock.

In the South and dry Western parts of the country, it has proven valuable as a hay crop, when sown in fall and cut early in spring, before the droughts set in.

Sand or Winter Vetch will grow even on barren soils, though of course it will grow much more luxuriantly on good soils. Being a legume, it attracts atmospheric nitrogen, which is stored in the soil. When grown on new soils it will prove advantageous to inoculate with Farmogerm. Sow one bushel to the acre with one-half bushel of rye.

Price, 30c. lb.; \$15.50 per bushel of 60 lbs.; \$25.00 per 100 lbs.

TRUE DWARF ESSEX RAPE

PROVIDES PERFECT PASTURE and is GREATLY RELISHED BY ALL STOCK
INDISPENSABLE FOR SHEEP AND HOGS

Sow in the North from April to end of August and in the South
During September and October

In the United States we have millions of acres of good land that annually lie idle or run to weeds the latter part of the season, after the grain, potato and hay crops have been harvested, a large portion of which might be made to produce one of the finest feeds imaginable, and in the greatest abundance, at a time when cattle, sheep and hogs are roaming through bare pastures in search of a scanty living. Under favorable conditions it is ready for pasturing sheep or cattle within six weeks from time of sowing, and on an average one acre will carry twelve to fifteen sheep six weeks to two months. When on the Rape they should at all times have access to salt; but water is not necessary. There are several varieties of Rape, but care should be taken to procure the DWARF ESSEX, or English, as it is sometimes called, which does not seed the same season as sown, unless in some exceptional cases, as when sown too early and the young plant is touched by frost. In northern States it should be sown from April to end of August for fall pasturing, but as it thrives best in cool weather, it should not be sown in the Southern States until September or October for winter pasture. In the latitude of New York it should be sown in April, or in July or August. Its fattening properties are probably twice as good as those of Clover, and for sheep the feeding value of Rape excels all other plants we know of. At the Michigan Experiment Station 128 lambs were pastured for eight weeks on 15 acres of Rape sown in July, and showed a gain of 2,890 lbs., or at the rate of 3 lbs. per lamb each week. Even so far South as Alabama it has proved a boon to the farmer. In a recent bulletin published by the Alabama Experiment Station they state: "Quality of product good for both hogs and cattle. The growth was enormous. By repeated sowings it will and did carry more hogs through our dry, hot summers than four times the amount of land planted in anything else ever grown here. I would recommend it to all Southern farmers." To secure the best results, the Rape should be sown in drills. Sow 4 lbs. per acre broadcast, 2 to 3 lbs. per acre on drills.

Price, 15c. per lb.; \$7.00 per bushel of 50 lbs.; 100 lbs., \$12.00.

HENDERSON'S NORTHERN GROWN ALFALFA SEED

ALFALFA, or LUCERNE. (*Medicago sativa*.) A Clover-like leguminous plant of great importance as a hay and forage crop, nutritious and rich in protein elements. It grows 2 to 5 feet high and sends roots 5, 10, 20, and sometimes 30 feet into the subsoil. It needs one season to become established, after which it yields enormous crops annually for many years. 3 or 4 cuttings per season, aggregating 4 to 6 tons cured hay per acre, are harvested, according to conditions and locality. It does well on all good rich soils (except heavy clay), if well drained, or overlying a permeable subsoil; on calcareous soil it thrives especially well. Our strain of Alfalfa Seed is grown in far Northern regions, where plants have to endure extreme cold and still thrive in those high altitudes. Our experience—and that of our customers—has shown that such seed is undoubtedly the best for the North and Eastern States, and that it excels all others in hardiness. Before offering this seed to our customers for sale, it is thoroughly recleaned by the most modern seed-cleaning machinery in America. These are not ordinary fanning mills, but machines with an even and strong air suction—equal at all points—which is quite a different thing from a blast. By this process we are enabled to separate the sound, perfect seeds from all rubbish and light, imperfect seeds. Sow in the Northern States during June, July or August, 30 to 40 lbs. of seed per acre if broadcasted, 25 or to 30 lbs. if drilled. In the South sow in February or September.

Price, Henderson's Superior Recleaned Alfalfa Seed, 40c. per lb.; \$21.75 per bushel of 60 lbs.; \$35.00 per 100 lbs.

"That Alfalfa I bought of you is more than a success, it is a wonder to all the farmers around here. No rain here for eight weeks, yet it is growing fine while around the fields are all dried up."

THOMAS S. OSBORN, Amagansett, L. I.

GRIMM ALFALFA SEED THE HADIEST ALFALFA KNOWN

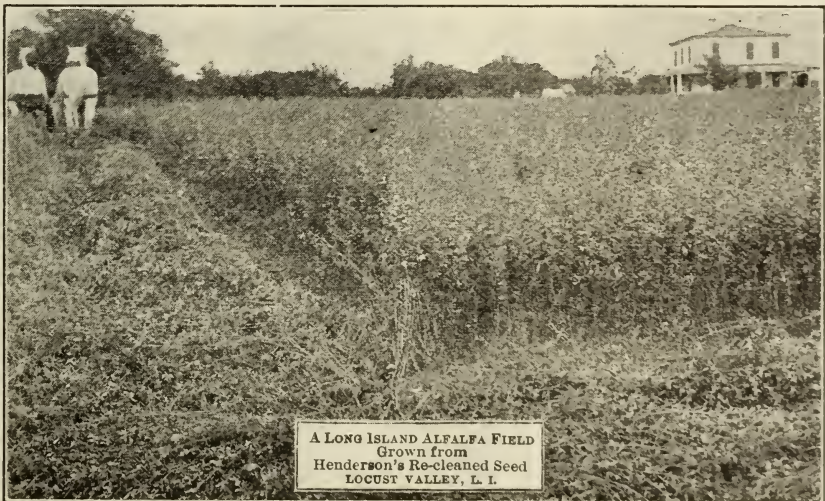
"The Country Gentleman" of March 10, 1917, says: "According to the records, Grimm alfalfa was introduced into Carver country, Minnesota, in 1857, by Wendelin Grimm, an immigrant from Baden, Germany. He brought with him fifteen or twenty pounds of alfalfa seed, and sowed it in the spring of 1858. Just how well this first seeding of the "ewiger Klee"—everlasting clover—as he called it, succeeded is not definitely known, but at least enough of the plants survived to furnish seed for future sowings, and in 1867, 480 pounds were threshed from three acres."

The attention of the Minnesota experiment station was called to this alfalfa in 1901, and by careful experimentation Grimm alfalfa was found to be far superior to common kinds in with standing unfavorable winters. This strain of alfalfa seed not only endures extremely low temperature, but it can be cut with greater safety in the fall, and will bear more abuse in the way of pasturage than any other forage plant. Grimm Alfalfa has larger crowns, and a more spreading root system than the ordinary Alfalfa. It is also claimed that it will yield from ten to fifteen per cent more than any other variety, and will start and thrive in undrained wet locations, where the ordinary sort was tried unsuccessfully. One of the characteristics of the Grimm Alfalfa is that some of the plants produce peculiar greenish-yellow flowers. The seed is high priced and it is rather hard to get the genuine article.

We offer our stock at the following prices, as long as unsold.

Price, 75c. per lb.; \$42.75 per bushel; \$70.00 per 100 lbs.

Full cultural instructions will be found in our new Booklet "ALFALFA ON NORTHERN FARMS" sent free to all applicants.



A LONG ISLAND ALFALFA FIELD
GROWN FROM
HENDERSON'S RE-CLEANED SEED
LOCUST VALLEY, L. I.

U. S. DEPT. of AGRICULTURE SAYS:

"IN ADDITION TO THE HAY CROP, ALFALFA IN TWO YEARS ADDS \$100 TO THE VALUE OF EVERY ACRE ON WHICH IT GROWS."

CRIMSON OR SCARLET CLOVER (TRIFOLIUM INCARNATUM)

The Most Valuable Plant Known, for Restoring the Fertility of Wornout Soils

All lands from which crops have been harvested during the summer and fall should be sown with Scarlet Clover for plowing under the following spring. Plowing under a good crop of Scarlet Clover is equivalent to 20 tons of stable manure per acre.

It is the cheapest source of nitrogen and has revolutionized the methods of farming in many States, has restored to profitable cultivation thousands of acres of poor land. Its value as a winter soil mulch and for green manuring for orchards cannot be overestimated.

If intended for feeding, it should always be cut while in the young stage, and never fed to stock after the crop has ceased flowering, as serious results are apt to follow the feeding of over-ripe Crimson Clover.

In the latitude of New York, time for sowing may extend from July 15th to September 15th, and further South up to October. The seed needs to be only lightly covered, and a good plan is to sow on rich plowing and cover with a light harrow. Sow 15 lbs. per acre.

Choice new crop seed of highest growing quality, thoroughly re-cleaned, and free from weed seeds. Price, 28c. lb.; \$15.00 per bushel, \$24.00 per 100 lbs.

ALSIKE OR HYBRID CLOVER (TRIFOLIUM HYBRIDUM)

A hybrid intermediate in growth and appearance between Red and White Clovers. It is a perennial and one of the hardiest of all clovers, thriving particularly well in cool climates and stands freezing well. It is valuable for sowing with other grasses and clovers as it forms a thick bottom, increasing the yield of hay. Sow (if alone) 8 lbs. per acre; weight, 60 lbs. per bushel.

Price, 40c. lb., \$21.75 per bushel, \$35.00 per 100 lbs.

RED CLOVER (TRIFOLIUM PRATENSE)

Price, (subject to change without notice) Henderson's Superior Sample (extra re-cleaned), 42c. lb.; \$23.50 per bushel of 60 lbs., \$38.00 per 100 lbs.

MAMMOTH OR PEA VINE RED CLOVER

(TRIFOLIUM PRATENSE PERENNE)

Quite distinct from the common Red Clover, being of larger and coarser growth. Valuable for reclaiming exhausted lands. Sow (if alone) about 12 lbs. per acre; weight, 60 lbs. per bushel. Henderson's Superior Sample (extra re-cleaned). Price, 45c. lb.; \$24.75 per bushel \$40.00 per 100 lbs.

WHITE DUTCH CLOVER

(TRIFOLIUM REPENS)

A very hardy creeping variety, which accommodates itself to a great variety of soils, but grows most luxuriantly in moist ground or in wet seasons. It is valuable in mixtures for permanent pastures and lawns. Sow (if alone) 8 lbs. per acre; weight, per bushel, 60 lbs. Price, 75c. lb.; \$42.75 per bushel, \$70.00 per 100 lbs.





HENDERSON'S SPECIAL GRASS SEED MIXTURE

FOR

Hay and Permanent Pasture

It Produces Wonderful Hay Crops and Luxuriant Pasture
Maintaining Its Cropping Qualities Twenty Years or More

This famous mixture has seeded thousands of acres of meadow and pasture land for progressive farmers and stock raisers in various parts of the United States, with most gratifying results. It produces wonderful Hay crops and luxuriant pasture, maintaining its cropping qualities twenty years or more. It is a well-balanced combination of a number of native and acclimated foreign Grasses and Clovers, blended and improved upon during exhaustive trials under widely varied conditions, soils and localities for several years, until practically perfect, our aim being to produce, under the extremes of the American climate of heat, drought and cold, a PERMANENT dense and deep-rooting turf that would yield year after year the maximum quantity of foliage. These Grasses are of superior quality, inviting sweet and nourishing, whether used as hay or pasture. That we have been successful is attested by the numerous letters of praise for these special Grass mixtures that we have received from the users, and the tributes to their merits published in many of the agricultural journals.

In preparing these mixtures the greatest care is exercised in selecting such varieties as are suited to the soil to be sown and are likely to realize the object in view. Therefore a description of the soil and climate, and the purpose for which sown, and if with or without a grain crop, should accompany each order. Sow 40 lbs. per acre.

Full directions for sowing enclosed in every bag.

The Yield of Hay under favorable conditions averages 3 to 4 tons per acre at the first cutting, or nearly double that of Timothy and Clover, and larger yields are not unusual; then, if not pastured, the second crop is usually about one-half the quantity of the first. This shows the great value of this special mixture of grasses over Timothy which seldom yields a second crop, nor can it be pastured after cutting without seriously damaging the next season's yield, for Timothy after cutting throws its strength into its bulbous base, on which its yield the next season depends.

Pasturage. After the hay crop is cut the grass commences to grow at once, recovering its verdure in a few days' time and affording a continuous pasturage even through dry summer weather, until winter sets in; or the field may be pastured from earliest spring and still be in prime condition for yielding hay or pasture the next season, and so on year after year, for the various grasses composing this special mixture are all dense, fibrous-rooting varieties, sustaining no injury from cropping—proving its value over Timothy, which would be injured, probably ruined, under similar conditions.

Prices HENDERSON'S SPECIAL GRASS MIXTURE FOR HAY AND PERMANENT PASTURE.
For Light Soils, Medium Soils or Heavy Soils (state which in ordering) (purchaser paying transportation) 40c. per lb.; 10 lbs. \$3.75; 100 lbs., \$35.00.

The fall season is especially favorable to the growth of young grass, for at that season the seeds have the benefit of thoroughly warmed ground and a copious rainfall, which hastens germination and enables the grass to become firmly established before winter sets in. Then, on the opening of spring, the grass immediately recommences its growth and taking full possession of the ground, prevents weeds from obtaining a foothold.





HENDERSON'S SPECIAL
GRASS MIXTURE

FOR PERMANENT PASTURE

Supplies Continuous and Abundant Pasturage for Twenty Years or More, Remains Green and Succulent All Summer Long, When Ordinary Grazing Lands Are Burned Brown

There is no more important part of a farm than a good pasture, and that can only be obtained by the use of the proper Grasses, varieties that have different root formations and different habits and season of growth, in order to maintain a rich, close turf throughout the entire season. Timothy should never be used for pasture, because it will *not* stand trampling, and soon runs out when heavily pastured and at best is short-lived, as compared with the permanent Grasses used in our Special Mixtures. These Mixtures contain over a dozen of the best permanent Grasses, both American-grown and imported. All are permanent, and when once established will last indefinitely, if the fertility of the soil is kept up by occasional top-dressing. Owing to the different habits of growth, the Grasses grow closer together and form a rich, close turf, covering the soil completely and forming a protection to the roots during hot, dry weather, thereby enabling these Grasses to maintain a rich green appearance when Timothy and other Grasses are burned up. The thick turf also prevents animals poaching through and destroying the pasture. Sow 40 lbs. per acre. Price (purchaser paying transportation), 40c. per lb.; 10 lbs., \$3.75; 100 lbs., \$35.00.

HENDERSON'S SPECIAL

GRASS SEED MIXTURE

FOR PERMANENT HAY

Supplies a Good Crop of Hay in Dry Seasons when ordinary Hayfields are Burned Up

Although the most widely cultivated hay grass in the United States is Timothy, or a mixture of Timothy and Clover, and while they answer the purpose admirably on farms where the soil is suitable and where the usual three and four years' rotation is carried on, yet there are many other grasses which will yield more profitable returns.

An acre of Henderson's Special Grass Mixture for Permanent Hay will yield double the quantity of an acre of Timothy and Clover, and the farmer whose land is sown with a proper mixture of Permanent Grasses, requiring only an occasional top-dressing of manure or fertilizer to maintain their heavy cropping qualities for twenty years or more, avoids the expense of the yearly plowing and cultivating, necessary in rotation cropping.

Hay yields very profitable annual returns at a minimum of labor and expense. The seed of these Permanent Grasses is more costly than Timothy, and more is required per acre, but by reason of their heavy cropping qualities and permanency they soon repay the extra cost and leave a handsome margin for the farmer, when the cost of plowing, harrowing and re-seeding Timothy every three and four years is taken into consideration.

Price (purchaser paying transportation), 40c. per lb.; 10 lbs., \$3.75; 100 lbs., \$35.00.

HENDERSON'S RENOVATING MIXTURE FOR IMPROVING OLD PASTURES. (Sow 40 lbs. per acre.) Price (purchaser paying transportation), 40c. per lb.; 10 lbs., \$3.75; 100 lbs., \$35.00.

HENDERSON'S SPECIAL GRASS MIXTURE FOR WOODLAND PASTURES. Sow 40 lbs. per acre. Price (purchaser paying transportation), 40c. per lb.; 10 lbs., \$3.75; 100 lbs., \$35.00.

PERMANENT CLOVERS

Do not omit to sow Clovers with the Grasses, as they add to the yield of hay and pasture, and by their ability to collect atmospheric nitrogen and store it in the root nodules, assist the growth of the Grasses and are of considerable benefit to subsequent crops.

Mixed Permanent Clovers, on account of their greater weight, should be sown separately, but at the same time as the Grasses. This Mixed Clover comprises White, Mammoth Perennial or Cow Grass, Alsike, etc. Sow 10 lbs. per acre. Price, 50c. per lb.; 10 lbs., \$4.75; 100 lbs., \$45.00.

HENDERSON'S Superior Re-Cleaned Grass Seeds

All Our Grass and Clover Seeds are Choicest Quality New
Crop Seeds of the Highest Germinating Power: Thoroughly
Cleaned by the Most Improved Seed-Cleaning Machinery

We offer choice, re-cleaned seeds of imported and native grasses suited to the widely varied climatic conditions of this continent.

While the various mixtures of grasses made up by us, and fully described and illustrated on pages 9 and 10, cover the general needs of the American farmer for permanent pasture, and permanent hay, yet sometimes conditions are such, that it is necessary to grow some special grass, or combination of grasses to meet them. For instance, in sections where the rainfall is very light, or in hot Southern climates it is advisable to grow such drought-resisting grasses as Awnless Brome Grass first introduced into this country in 1889 by us; or Johnson Grass and Bermuda Grass which succeed admirably in such latitudes.

Then again, there are special soil conditions which have to be met by prescribing suitable combinations of grasses. We are prepared at all times to make up special mixtures for such particular purposes; and all correspondence relating to such matters will receive our prompt attention. Customers writing us should send a description of soil and climate, and the purpose for which the crop is to be grown, and if it is intended to be sown with a grain crop or alone. We are always glad to give our farmer friends the benefit of our long and varied experience in all matters relating to agriculture. Special quotations for large quantities.

	Weight Per Bush.	Per Bush.	Per Lb.	Per 100 lbs.
Awnless Brome Grass. (<i>Bromus inermis</i> .) Will produce heavy crops in dry sections and on poor soils, where other Grasses perish. It is one of the hardiest Grasses.	14 lbs.	\$6.00	\$0.45	\$40.00
Bermuda Grass. (<i>Cynodon dactylon</i> .) Of great value in the Southern States.	35 lbs.50	45.00
Canada Blue Grass. (<i>Poa compressa</i> .) Useful for sowing on hard clay and poor soils.	14 lbs.	6.00	.45	40.00
Colonial Bent. (<i>Agrostis Canina</i> .) Waipa Brown of New Zealand excellent for putting greens and Lawns.	20 lbs.	31.00	1.60	150.00
Chewings New Zealand Fescue. (<i>Festuca Chewings</i> .) This grass is specially recommended for golf putting greens and lawns. Succeeds on all soils.	20 lbs.	16.50	.85	80.00
Creeping Bent Grass. (<i>Agrostis stolonifera</i> .) Excellent for lawns.	20 lbs.	46.50	2.40	230.00
Crested Dog's Tail. (<i>Cynosurus cristatus</i> .) Should enter in moderate quantity in permanent pasture and lawn mixtures.	21 lbs.	18.25	.85	80.00
English Rye Grass. (<i>Lolium perenne</i> .) Grows rapidly and makes a good showing in a month.	24 lbs.	5.25	.25	20.00
Fine-leaved Sheep's Fescue. (<i>Festuca ovina tenuifolia</i> .) The finest bladed Grass, valuable only for lawns.	14 lbs.	21.75	1.60	150.00
Hard Fescue. (<i>Festuca duriuscula</i> .) A dwarf Grass, forming a dense, fibrous mat, succeeds well in dry places.	12 lbs.	8.75	.75	70.00
Hungarian Grass. (<i>Panicum germanicum</i> .) Is a valuable annual forage plant. Sow 1 bushel to the acre.	48 lbs.	3.50
Italian Rye Grass. (<i>Lolium italicum</i> .) Thrives in almost any soil, and yields early and abundant crops. Sown in the fall will produce an excellent hay crop the following season, but lasts only one year.	18 lbs.	4.00	.25	20.00
Johnson Grass. (<i>Sorghum</i> (or <i>Andropogon halepensis</i> .) Valuable meadow or hay Grass for the South; withstands drought.	25 lbs.	6.75	.30	25.00
Kentucky Blue Grass. (<i>Poa pratensis</i> .) Fancy or double extra clean. Though offered at the standard weight of 14 lbs. per bushel, the natural weight of this fancy seed is 21 to 25 lbs. per measured bushel.	14 lbs.	6.75	.50	45.00
Meadow Fescue. (<i>Festuca pratensis</i> .) Of great value in mixtures for permanent pastures.	22 lbs.	9.50	.45	40.00
Meadow Foxtail. (<i>Alopecurus pratensis</i> .) One of the best Grasses for permanent pasture.	7 lbs.	Price	on Appli-	cation.
Orchard Grass. (<i>Dactylis glomerata</i> .) One of the most valuable Grasses; in mixtures, either for pasture or hay.	14 lbs.	5.25	.40	35.00
Red or Creeping Fescue. (<i>Festuca rubra</i> .) Forms a close, rich sod, and is valuable in lawns.	14 lbs.	11.50	.85	80.00
Red Top Fescue. (<i>Agrostis vulgaris</i> .) The finest re-cleaned fancy seed. Valuable either for hay, or permanent pasture and lawns.	32 lbs.	12.00	.40	35.00
Red Top Ordinary. Unhulled seed, lighter than fancy, germinating from 60 to 65%	14 lbs.	3.00	.25	20.00
Rhode Island Bent Grass. (<i>Agrostis canina</i> .) A very fine variety for lawns.	14 lbs.	Price	on Appli-	cation.
Rough-stalked Meadow Grass. (<i>Poa trivialis</i> .) Excellent for pastures and meadows, particularly on damp soils.	14 lbs.	23.25	1.70	160.00
Sheep's Fescue. (<i>Festuca ovina</i> .) Short and dense in growth, excellent for sheep pastures.	12 lbs.	8.75	.75	70.00
Sudan Grass or "Garawi Grass." The first crop matures in from 50 to 75 days, and the recovery after cutting is so rapid that another cutting may be taken 25 to 35 days later.	25 lbs.	4.25	.20	15.00
Sweet Vernal, True Perennial. (<i>Anthoxanthum odoratum</i> .) Emits an agreeable odor, which it imparts to the hay.	10 lbs.	9.25	.95	90.00
Tall Meadow Fescue. (<i>Festuca elatior</i> .) Early, and productive on wet or clay soils.	14 lbs.	18.00	1.35	125.00
Tall Meadow Oat Grass. (<i>Avena elatior</i> .) Of rapid growth, recommended for soiling and hay mixtures.	10 lbs.	8.25	.85	80.00
Timothy. (<i>Phleum pratense</i> .) The grade we offer is choice, free from weed seeds and of high germinating power.	45 lbs.	7.00	.18	14.00
Various-leaved Fescue. (<i>Festuca heterophylla</i> .) Valuable for permanent pasture, and desirable in lawn mixtures.	14 lbs.	13.00	.95	90.00
Wood Meadow Grass. (<i>Poa nemoralis</i> .) Of early growth and thriving well under trees.	14 lbs.	21.75	1.60	150.00

PRICES ARE SUBJECT TO CHANGE WITHOUT NOTICE OWING TO FLUCTUATIONS OF THE MARKET

The Most Beautiful Lawns in America

Are made with the **HENDERSON LAWN GRASS SEED**. This celebrated mixture has been thoroughly tested by country-wide use for more than half a century. It is the fruit of years of experience and close study of *American conditions* and is undoubtedly the best for the *American climate*. By its use a deep green, velvety sward, free from clumps, can be produced in from four to six weeks' time.

THE FALL SEASON IS ESPECIALLY FAVORABLE TO THE GROWTH OF YOUNG GRASS, for at that season the seeds have the benefit of a thoroughly warmed ground and a copious rainfall, which hastens germination and enables the grass to become firmly established before winter sets in. Then, on the opening of spring, the grass immediately recommences its growth and taking full possession of the ground, prevents weeds from obtaining a foothold. A lawn grown in this way will endure summer drought much better than a spring-sown lawn.

THE HENDERSON LAWN GRASS SEED is an intelligently arranged combination of grasses, which are at their best during different months of the year, thus keeping a lawn constantly covered with verdure. It is impossible to make an enduring lawn by sowing seeds of a single variety, which will only grow vigorously for a portion of the year. Kentucky Blue Grass for instance, while useful in lawn mixtures, grows but sparsely during midsummer, is slow to form a close sward, requiring two years to do that, and loses color in hot weather.

THE HENDERSON LAWN GRASS SEED is composed of fine-leaved, dwarf grasses, which produce a closely interwoven turf that maintains from year to year a covering of enduring green.

The quantity required for new lawns is 5 bushels per acre. For a plot 15 x 20, 300 square feet, use 1 quart. For renovating old lawns, use one fourth to one-half of above quantities. *Full instructions in every bag and package*

DELIVERED FREE IN THE U. S. 40c. per qt., 75c. for 2 qts. \$1.35 for 4 qts., \$2.25 per peck of 5 lbs.; \$8.00 per bushel of 20 lbs. (By parcel post, express or freight, at our option.)

The Henderson Lawn Grass Seed Sown in the fall, produces enduring turf that will withstand summer droughts.

HENDERSON'S LAWN GRASS MIXTURE FOR SPECIAL PURPOSES

"TERRACE SOD" Lawn Grass Seed for terrace and embankments; 45 cts. per quart; \$1.50 for 4 quarts; \$2.75 per peck of 5 lbs.; \$10.00 per bushel of 20 pounds. *Delivered free in the U. S.*

"SHADY NOOK" Lawn Grass Seed for shady places; 50 cts. per quart; \$1.75 for 4 quarts; \$3.25 per peck of 5 lbs.; \$12.00 per bushel of 20 pounds. *Delivered free in the U. S.*

"SUNNY SOUTH" Lawn Grass Seed for southern states; 50 cts. per quart; \$1.75 for 4 quarts; \$3.25 per peck of 5 lbs.; \$12.00 per bushel of 20 pounds. *Delivered free in the U. S.*

"ATHLETIC FIELD" Grass Seed Mixture; 50 cts. per pound; \$45.00 per 100 pounds. *Sow 150 to 200 pounds per acre.*

"SEASIDE" Lawn Grass Seed for sandy soil and saline surroundings; 35 cts. per quart; \$1.25 for 4 quarts; \$2.00 per peck of 5 lbs.; \$7.00 per bushel of 20 pounds. *Delivered free in the U. S.*

"PUTTING-GREEN" Grass seed Mixture for golf-courses; 80c. per lb.; \$18.00 for 25 lbs. (1 bushel); \$70.00 for 100 lbs.

"FAIR-GREEN" Grass Seed Mixture for golf-courses; 50 cts. per pound; \$45.00 per 100 pounds. *Sow 150 to 200 lbs. per acre.*

"TOUGH TURF" Grass mixture for tennis-courts, croquet-grounds and bowling-greens; 45 cts. per quart; \$1.50 for 4 quarts; \$2.75 per peck of 5 lbs.; \$10.00 per bushel of 20 pounds. *Delivered free in the U. S.*

