

Historic, Archive Document

Do not assume content reflects current scientific knowledge, policies, or practices.



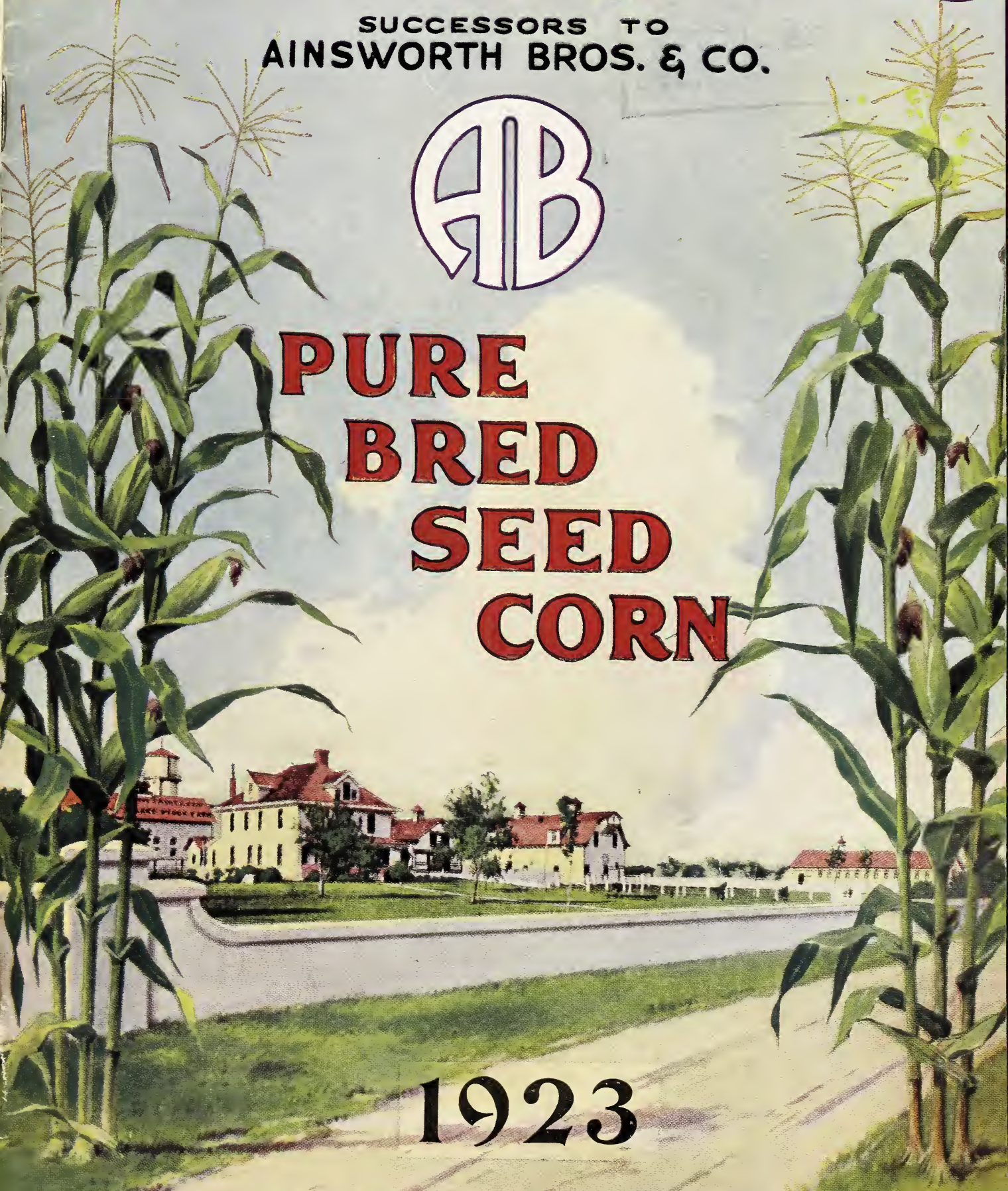
62,25

AINSWORTH-BOONE CO.

SUCCESSORS TO
AINSWORTH BROS. & CO.



**PURE
BRED
SEED
CORN**



1923

KENTLAND — INDIANA

OUR SEED CORN DRYING PLANT



VENTILATING
DOORS CLOSED



VENTILATING
DOORS OPENED

FOREWORD

1 9 2 3

Farm Conditions—The tendency is upward, grain prices are improving and farmers in general are doing their utmost to increase production. Babson, the statistician, says "The farmers are 35 per cent better off than one year ago." The planting of better seed is one of the most important factors to be considered for increased yield. Planting corn of uncertain vitality and germination is like buying a horse in the dark. You may have a stand but you probably will not. You take no such chance with our corn for it carries our standard guarantee, 95 per cent germination or money back—by this we mean 95 per cent or better of strong vigorous sprouts.

Strong and vigorous sprouts produce bumper crops and bumper crops make the country prosperous. We all want prosperity and we ask your careful consideration of your seed corn at your next planting. Indiana corn made a wonderful showing at the recent International. Approximately 93 per cent of the first premiums were from Indiana. To be exact 48 out of a possible 53 of the first prizes were from Indiana. We have always been proud of the special quality of our corn but the above record is absolute proof of the genuineness of the corn we offer you.

Our corn is raised locally and has excellent quality. Our methods are improved year after year and we are able to offer you this season seed corn that approaches our ideals as nearly as possible to produce. The corn is splendid, our methods are modern and our prices are extremely fair considering costs of coal and other equally expensive items that enter into the drying process.

We hope you will take advantage of the opportunities herein offered. Your increased bank account will prove the wisdom of placing your order.

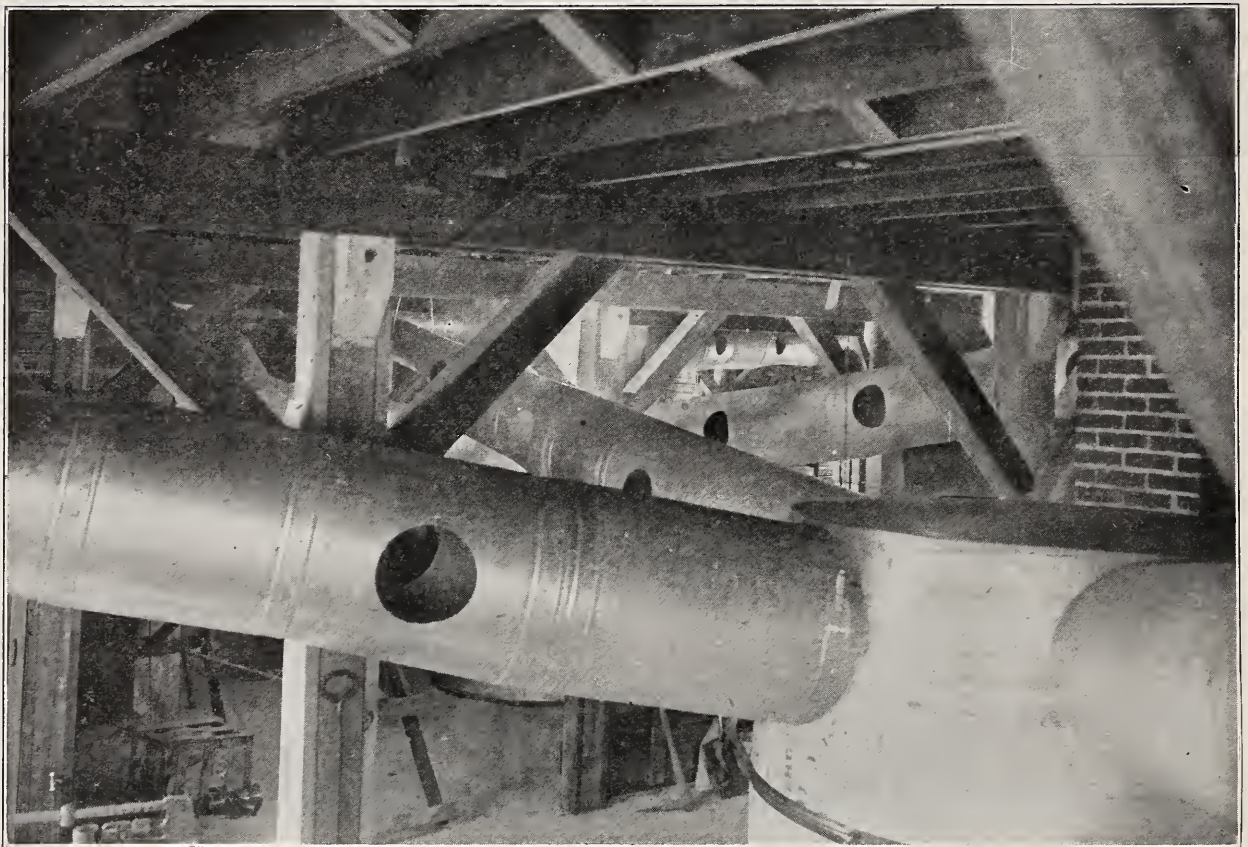
We cordially invite you to visit our drying plant.

Ainsworth - Boone Co.

The Modern Drying Plant

The modern drying plant is very far removed from the old-time methods employed by our grandfathers. Even in the olden days our predecessors knew the necessity of removing moisture from seed corn. The process of removing the moisture determines the per cent of vitality in seed corn. Ideal conditions consist of low humidity, proper temperature and plenty of ventilation.

We have incorporated these conditions in our drying plant and a short trip through the plant will convince you that we have spared no expense in our efforts to obtain perfect results. We have over 300 windows, doors and roof ventilators, three enormous drying furnaces and the floors through the entire five story plant are slatted, giving complete air



View Showing Heating System. The Heat is Uniformly Distributed Under the Entire First Floor

DON'T WANT ANY BETTER SEED.

Patriot, Ind., Oct. 18, 1922.

Ainsworth-Boone Co.,
Kentland, Ind.

Gentlemen:

In regard to the seed corn purchased from you last spring I can say that your seed corn was No. 1. We had good luck with it and I don't want any better seed. I have told my neighbors about your seed company. I will recommend your seed to anyone. I always get new seed every two years and I will not forget to order your seed again.

Yours very truly,
EVERETT BUDDENBERG.

NO FAULT TO FIND

Eaton, O., Oct. 17, 1922.

Ainsworth-Boone Co.,
Kentland, Ind.

Dear Sirs:

I have been getting seed corn from your firm for several years. I have had no fault to find and have been greatly satisfied with the results of your seed corn. The appearance and grading have been excellent. I have found the yield of the corn to be very good. Since I have been buying my seed from your company my corn crop has been above my expectations.

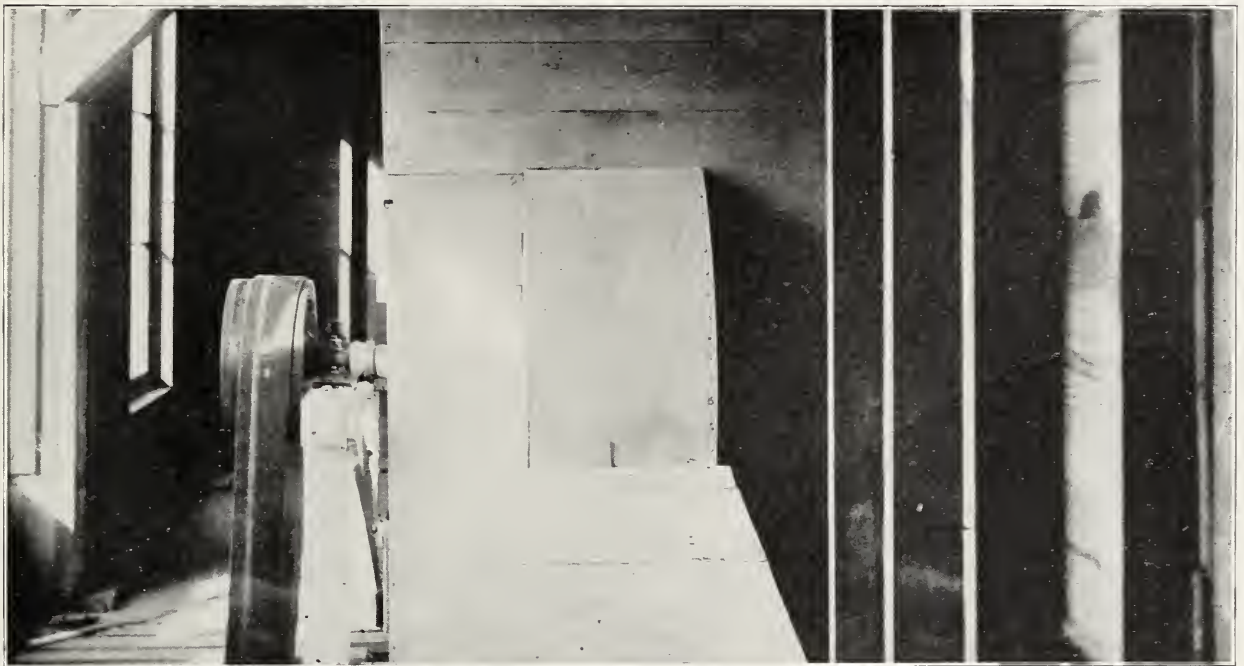
Yours very truly,
TYLER L. FUDGE.

AINSWORTH-BOONE CO.

circulation. Our large exhaust fan is worthy of consideration inasmuch as we are the only firm using this method for partial removal of moisture. This fan is capable of changing the air in the entire plant within one hour, and experience has proven that this innovation is indispensable.

The equipment used in the drying plant is of the most modern type and for each operation we have installed the best machinery obtainable. We are very proud of our entire plant and we regret that every one of our customers cannot realize the care and effort coupled with the modern equipment that enters into the production of A-B Seed Corn.

Many of our patrons drive to Kentland and purchase their seed. These days of good roads offer you this opportunity. We are always glad to show our friends through our drying plant.



This Fan Has a Capacity of 32,000 Cu. Ft. of Air Per Minute.

**EARLY CORN 70 BUSHELS PER ACRE—
LATE CORN 80 BUSHELS PER ACRE**

Marion, Ind., Oct. 23, 1922.

Ainsworth-Boone Co.,
Kentland, Ind.

Dear Sirs:

In regard to the seed corn I bought from you last spring (1922) will say that every grain came up and the germination was better than you said. The Early Dent makes early corn to turn hogs in and the yield was about 70 bu. per acre, and good, hard corn. The late Dent we are now cribbing (Oct. 18) is dry and in good shape, will make 80 bu. or better, and I think that is extra good for rather high ground. The appearance and grading cannot be beaten or equalled. I would rather have your shelled corn than ear because your grading is better than any common farmer can do. The corn that I bought from you did not pass my expectations because I am an old customer of your firm and seed corn bought from you heretofore would be hard to equal, so you see that

I naturally would expect the best from your house.

Yours very truly,

R. R. No. 9.

HARVEY CABE.

NOBODY IN VICINITY HAD AS GOOD CORN
Lancaster, O., Oct. 17, 1922.

Ainsworth-Boone Co.,
Kentland, Ind.

Gentlemen:

All corn in our vicinity was planted very late and many fields otherwise good produced very poor corn. Nobody else in our section had the corn we had. We got a good stand, mostly two ears to a stalk and good ears at that. Itinerant corn cutters said that ours was easily the best corn they had cut this year and that they had cut over 500 acres. One field produced 50 bu. and the other 80 bu. per acre. If we would have had a normal season the 50 acre field would have done better.

Yours truly,

EDWARD G. KIRN.

The Value of Scientific Drying

Selecting good seed is of utmost importance in preparing for a large, uniform yield. However, many good farmers fail to realize the necessity of drying seed corn under a uniform temperature with proper ventilation. Severe changes of temperature seriously affect the percentage of germination. In many cases the germination will show favorably, yet the vitality is impaired in practically every instance. Hanging seed corn in a cold crib, barn or attic will absolutely cause a loss of many dollars. We have proved the satisfaction of many of our customers that it is possible to buy their seed from us and eliminate all work, worry and care of selecting, drying, shelling and grading and at the end of the season be several hundred dollars ahead—all this due to the value of scientific drying.

Our corn is brought directly from the field to the drying plant and after a first rough sorting and a second thorough sorting it goes to the drying racks and ventilated cribs. The ear corn is placed on specially constructed racks and the ears adapted for shelled corn in narrow slatted cribs. The ear corn has free circulation around the entire ear, no one ear touches another. The corn adapted for shelled corn is placed in narrow cribs that have slatted floors and walls and the shelled corn ventilation is additionally aided by the air shaft passing horizontally through each crib. The air shaft is fed by our large exhaust fan and comparatively speaking, is perfectly ventilated. During the warm days of late fall every window and door (there are over 300) in our entire plant is opened. As soon as the temperature drops to the vicinity of freezing we start our three drying furnaces. We fire these furnaces night and day until the moisture test shows less than 17 per cent.



View of Partially Filled Crib, Showing Slatted Air Shaft. Air is Forced to Center of Crib and Out Through Corn.



View of the Nubbing Room. Every Ear to Be Shelled is Carefully Examined and the Butts and Tips Removed. Only Fully Matured Ears Go Into the Shelled Corn.

There are no radical changes of temperature in our drying plant. The moisture is removed gradually. The vitality is unimpaired, in fact it is strengthened. Scientific investigations have proved that our methods of removing moisture will increase the yield from two to sixteen bushels per acre. This in itself is the proof that the modern farmer wants. We save you work, worry and make you a handsome profit. You have all to gain. Order your seed corn now and forget about it until you are ready to plant.

After the Drying

The next step in our process is the germination test. As we take the ears from the racks we remove two kernels from each ear. These kernels are then systematically tested and corn showing a germination test of less than 95 per cent is rejected. This comprises the third sorting for the ear corn. After a fourth sorting, the ears accepted are put in bushel crates and tagged as O. K. This final sorting completes the crate and it is now tagged with customer's name and is ready for delivery or shipment.

The shelled corn, after the germination test, is placed in the nubbing bins and again sorted, the ears retained have butts and tips removed back to a point where the grains are uniform and of good depth. These accepted ears are then run through the sheller, from there to the cleaner and finally to the graders. In addition to the mammoth four-screen Clipper grader a second grader of our own construction is used for our shelled corn. This second grader enables us to give you a grade of extreme uniformity. From the graders the shelled corn is weighed and sacked. It is now tested for germination. If the test shows 95 per cent or better the sacks are sewed and tagged as O. K. for delivery.



“I picked my own seed corn and found it to be my worst attempt at economy.”

(Name furnished upon request.)

The above quotation is from one of our good customers, he actually thought that buying seed corn was an extravagance until he collected some figures. He found that counting his time spent in selecting, expense of preparing a place to dry it, shelling, grading and testing made each bushel of corn a very expensive investment. In addition, the corn of his own selection was much lower in yield than corn purchased from us. His conclusion was the same as hundreds of our other good customers. HE COULD NOT AFFORD NOT TO BUY HIS SEED FROM US.

Most farmers are not equipped to care for seed corn. They do not feel that it pays to construct a place adapted to properly handle corn. It must have continuous heat and must never get below freezing until the moisture content is reduced to at least 17 per cent. This is expensive at present coal prices and for the few bushels of seed corn used you cannot afford to prepare such a drier.

Any farmer will tell you that seed corn properly selected and scientifically dried will yield from one to 16 bushels more per acre than corn dried in a crib, barn or attic where it is submitted to all sorts of weather conditions.

An Example: A bushel of seed corn will plant eight acres. Our seed will produce at least two bushels more per acre (in many cases 20 bu. more) than seed dried by the old-fashioned method. We give you two times eight or 16 bushels more than you would have had from your own seed. If corn is worth 60 cents this would be \$9.60 profit from one bushel of our seed, and if it outyielded your seed 20 bu. it would be \$96.00 profit, which is certainly good interest on your investment.

You cannot afford to go through the disagreeable task of selecting the seed, preparing a place to dry it and then have to test, shell and grade it when you can buy seed from us at the reasonable price of \$3.00 per bushel. When you buy seed from us all you do is place your order, give us date for shipment. We do the rest, and do it in a way that you will approve.

Come and see the plant. It will prove to you that we are capable of saving you a lot of old-fashioned worry, trouble and effort and in addition make you dollars every year.

FREE FROM DISEASE AND ALL GROWS

Plainfield, Ill., Oct. 18, 1922.
Ainsworth-Boone Co.,
Kentland, Ind.

Gentlemen:

The general appearance and grading of the seed corn purchased from you last spring was all anyone could expect. This corn will go better than 60 bu. to the acre. Your corn seems to be freer from disease than the average corn of this locality, but the best thing I can say of it is that it all grows. I have always had a good stand and I never plant more than two kernels of your seed in a hill.

Yours truly,

F. C. BOARDMAN.

YIELDED 10 BU. MORE PER ACRE THAN ANY SEED IN THE COMMUNITY

Greensburg, Ind., Oct. 18, 1922.
Ainsworth-Boone Co.,
Kentland, Ind.

Gentlemen:

The Reid's Yellow Dent seed corn I bought from you last spring was satisfactory in appearance and grading. It will yield 10 bu. more per acre than any other corn in this community. Every grain seemed to grow as I had a perfect stand of corn. Will want more seed next spring.

Yours truly,

R. R. No. 8.

B. O. EARMEL.

99 PER CENT OF A-B SEED GREW

Sheldon, Ill., Oct. 16, 1922.
Ainsworth-Boone Co.,
Kentland, Ind.

Gentlemen:

The Yellow Dent seed corn I purchased from you last spring was good. I am safe in saying 99 per cent of it grew. I have the best stand of corn I ever raised.

Yours truly,

LLOYD E. WILSON.

GLADLY RECOMMENDS A-B SEED

Winchester, O., Oct. 17, 1922.
Ainsworth-Boone Co.,
Kentland, Ind.

Dear Sirs:

I am glad to have an opportunity to tell the people what I think of A-B Seed Corn. I have splendid corn under trying circumstances, driest season ever. Will gladly recommend your seed.

Respectfully,

JESSE L. HOWLAND.

Seed Corn from Kentland

Kentland, Indiana, has long been identified with the production of excellent seed corn. It is the county seat of Newton County, Indiana; three miles from Benton County, the largest corn producing county in the state; four miles from the Illinois border.

For many years Kentland has been regarded as a seed corn center, this, of course, resolves from the excellent quality of corn produced and the seed selected from it. The soil is admirably suited for the production of corn and corn is the principal crop. We have a well-drained, brown, sandy silt loam. The community is progressive, the land is farmed intensively but is scientifically rotated and develops a hardy variety of corn which will grow in any portion of Indiana, Illinois, Ohio or other states in our latitude.

Kentland is at the intersection of the New York Central and Pennsylvania lines. These roads give us admirable shipping facilities north, south, east and west. A very satisfactory way to buy seed is to place the order by mail early in the season, it will be tagged at once and set back, then you can drive to Kentland and at time of planting this eliminates the uncertainty of freight and express shipments. For the information of customers unfamiliar with this section of the country, Kentland is located at the intersection of the "Adaway," Indiana state road No. 49, and the "Corn Belt Trail," Indiana state road No. 7. To our many customers from a distance we offer you the best of shipping facilities and each order is promptly delivered to freight or express depot upon date specified on your order.

Do not hesitate to stop at any time you are passing through Kentland. We feel you will benefit by a trip through our drying plant.



View showing ventilators in roof. These ventilators carry off the moisture on cold, damp days when windows and ventilating doors must be closed.

Ear or Shelled Corn Which Shall You Order?

For the benefit of our new customers we take this opportunity to assure you that the shelled corn which we ship you is picked from exactly the same corn as that in the ear. It receives the same care, is dried in exactly the same way and is in no way inferior to ear corn. All ears are full sized and matured. We also, in addition assure you that the only difference is, that the shelled corn costs us less to put on the market, due to the fact that all ear corn must be handled by hand to eliminate scuffing and is additional expense to pack in crates.

Our shelled corn continues to be far superior to anything placed on the market. In addition to our mammoth Clipper grader, we have installed another grader of our own design and construction, which removes all odd sized grains. Our shelled corn now passes over seven screens and a wind blast.

Shelled corn comes to you under the same guarantee as ear corn, it is tested, cleaned, graded and ready for your planter box.

Our average sales show about ten bushels of shelled corn to one in the ear.



Corn Ready For Shipment.



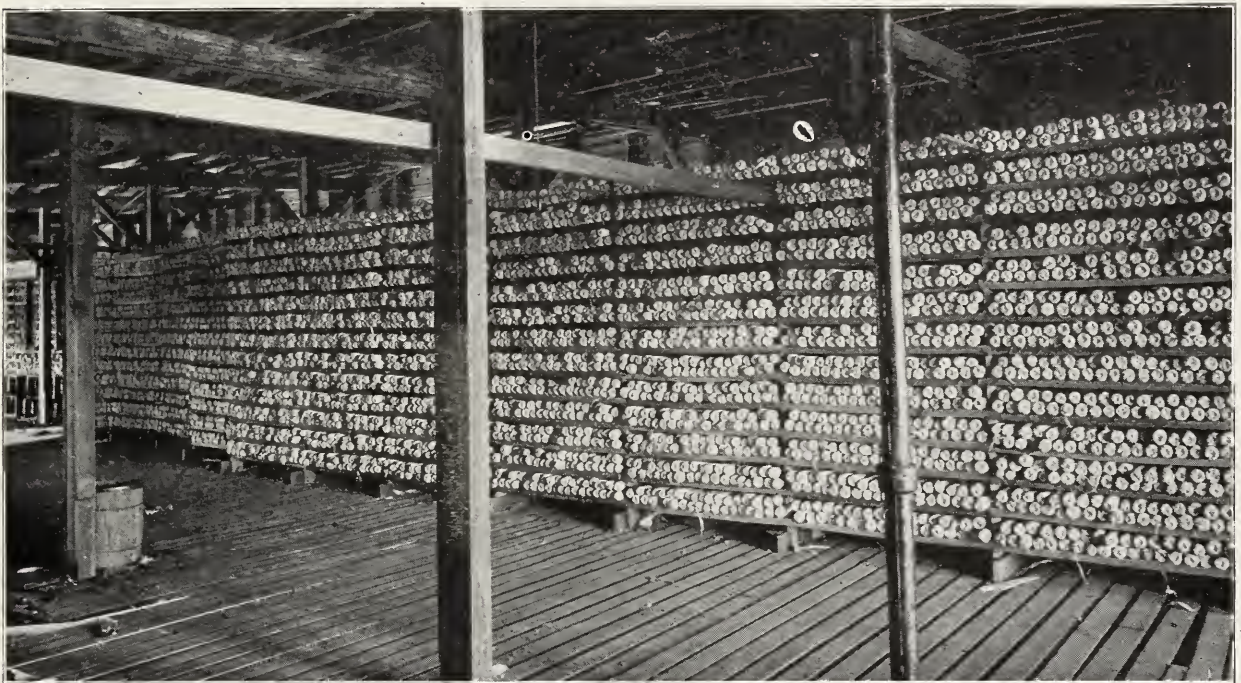
Seed Corn for 1923

Remember! Indiana won 93 per cent of the corn premiums at the last International Stock Show.

We can say frankly that our stock of seed corn for 1923 has never been equalled in the history of our business. It was fully matured before the earliest frost and in our drying plant before any freeze.

The quality is far superior to previous years. This is proven by the results shown at the last International. The ears are strong and firm. For the farmer that has planned to change his seed we would suggest this year as ideal. You can be sure of a wonderful yield from our splendid stock of seed corn. We are already receiving orders for spring delivery. Our stock is large and complete in all varieties, but every year we have to disappoint a great many of our good customers because they postpone sending us their orders until some varieties are exhausted. When we are sold out of a variety we have no more to offer. We sell only pure bred seed that has been stored and dried in our plant.

If you need seed corn—by all means **DON'T DELAY**. Decide as early as possible and mail your order—we make shipment at any time you say.



Corn Placed on Drying Racks. It is Left Here Until Dry. Then Re-sorted and Tested.

NEVER HAD SUCH A STAND OF CORN

Plano, Ill., Oct. 8, 1922.

Ainsworth-Boone Co.,
Kentland, Ind.

Dear Sirs:

I bought my seed corn from you this year and I never had such a stand of corn. I have corn that will run from 75 to 80 bu. per acre. I have ears that run 14 inches long and 26 rows around. It's going to be like husking cord wood. When I want new seed corn again you will get my order for I am more than pleased with the stand I got and no rain after the first plowing of the corn.

Yours respectfully,

F. S. ERWIN.

OUR FACILITIES ELIMINATE GUESS WORK

Kentland, Ind., Oct. 8, 1922.

Ainsworth-Boone Co.,
Kentland, Ind.

Gentlemen:

The seed corn secured from you was excellent in color and very uniform in size. We believe our yield will compare favorably with the best corn in this locality. We are well satisfied with this, our first, experience with your seed. Your facilities for handling the corn are sufficient to eliminate the guess work as to germination.

Very respectfully,

HURT & WHARTON,

By Clyde Hurt.

A-B Seed Is Guaranteed

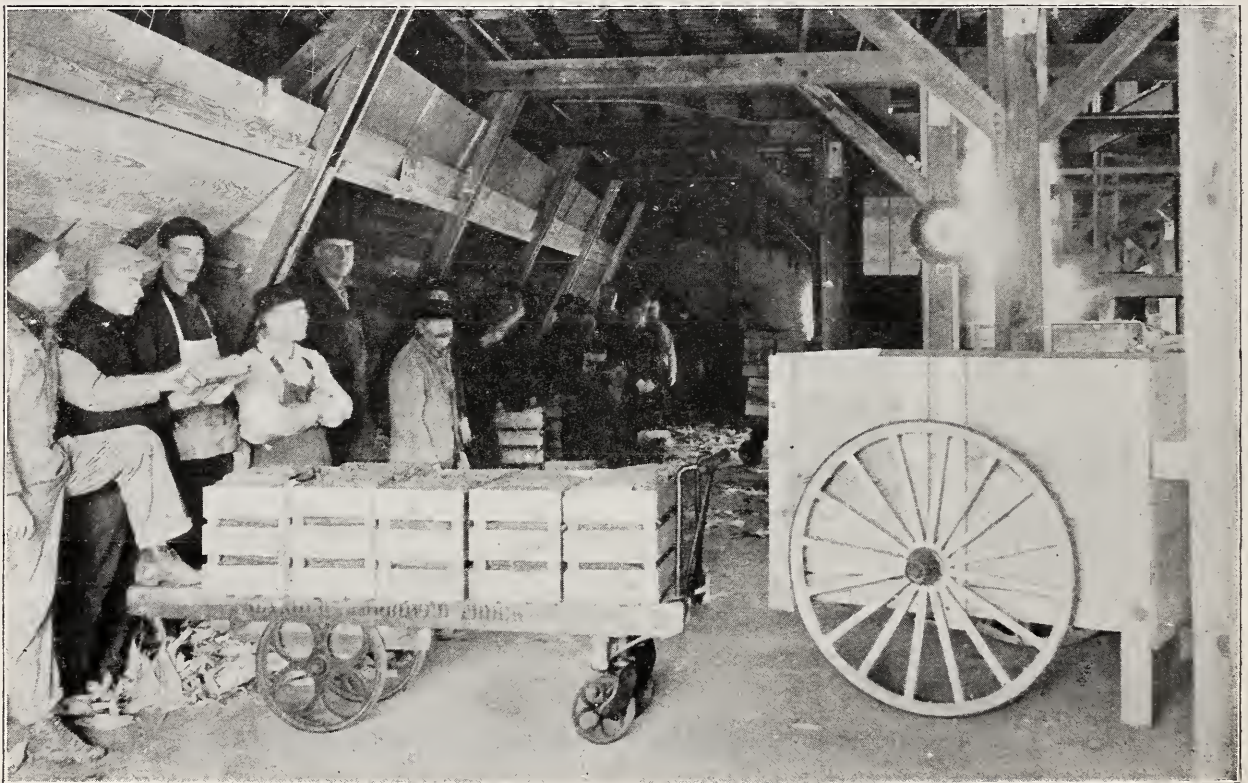
Page 9

Two's, Three's, Four's or a Mixture.

Shelled corn graded so thoroughly that you can positively set your planter plates for a specified number of grains will equalize the yield. The food content of the soil is sufficient to furnish nourishment when the planting is uniform. In purchasing seed corn you should expect a grade that will enable you to know exactly how many kernels will drop in each hill all day long.

Our shelled corn passes over seven screens and a wind blast, every odd shaped grain is removed. The perfect kernels are then elevated to a second grader of our own invention. This grader is unique in design and differs radically from the common type. The results obtained have far exceeded our expectations and we can assure you of a grade of extreme uniformity.

An unbiased test conducted by our local representative of John Deere 999 planters showed an average of over 99 per cent in all sized plates. This feature is one of the many advantages that our customers enjoy. A great many farmers have felt that they must buy seed corn in the ear to get good seed. We positively guarantee that the shelled corn shipped from our plant is absolutely the same in every respect as the ear corn and in addition it is ready for you to put in your planter box without further effort. We know the modern farmer appreciates such additional service rendered, and have proven the preceding statement by the increasing demand for A-B seed.



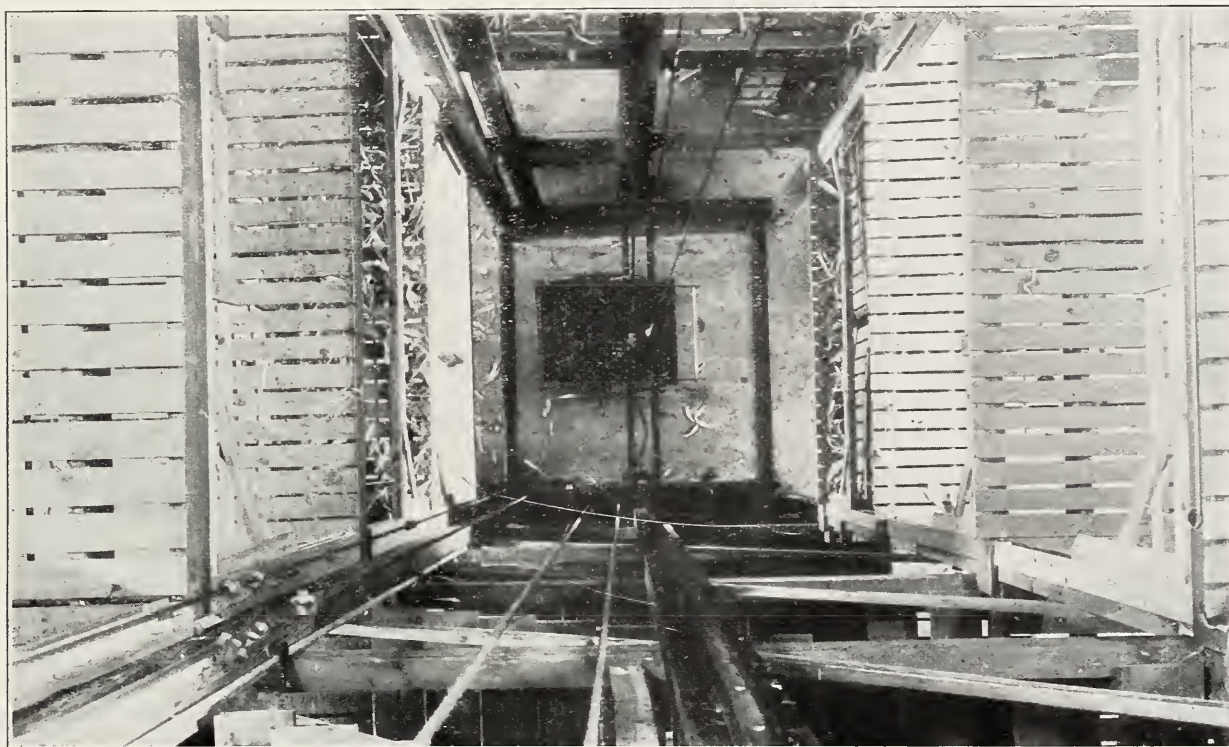
Rough Sorting the Corn as it Comes From the Fields.

Germination Tests.

As we have previously stated, two grains from each ear are removed in the third sorting and a series of tests run under most unfavorable conditions. The grains are laid in burlap cloths, in a sand box tester. They are then soaked with cold water. The entire experiment is carried on in a cool room. If anything, we are very unfair to the corn, but we must conduct the tests in such a way to assure our customers of a 95 per cent germination under the most severe conditions.

Vitality is proven by growth in a given period. We conduct tests with outside varieties and our corn averages as much growth in three days as other seed does in seven days.

By such methods we have been able to satisfy the most critical. It is the combination of high germination with a strong vitality that produces a bumper crop.



View Looking Straight Down Our Elevator Shaft From the Roof. Note the Open Floors, Allowing Free Circulation of Air Through Entire Five-Story Drying Plant.

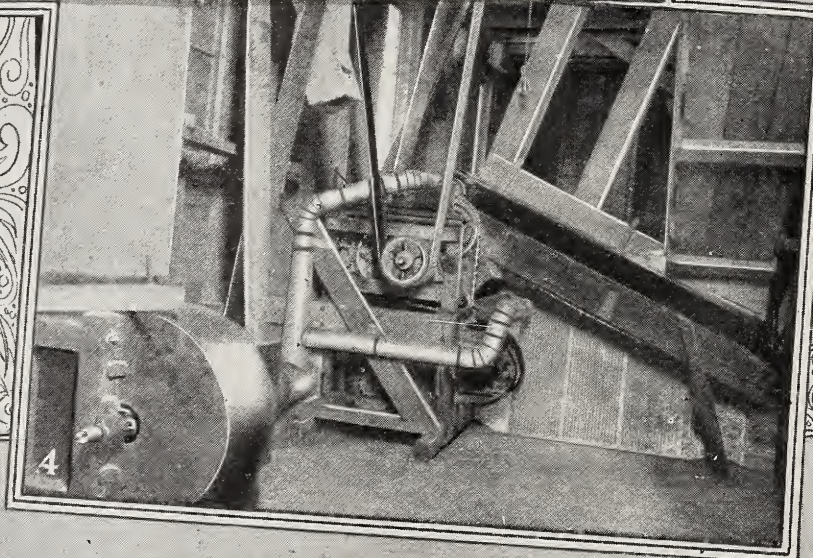
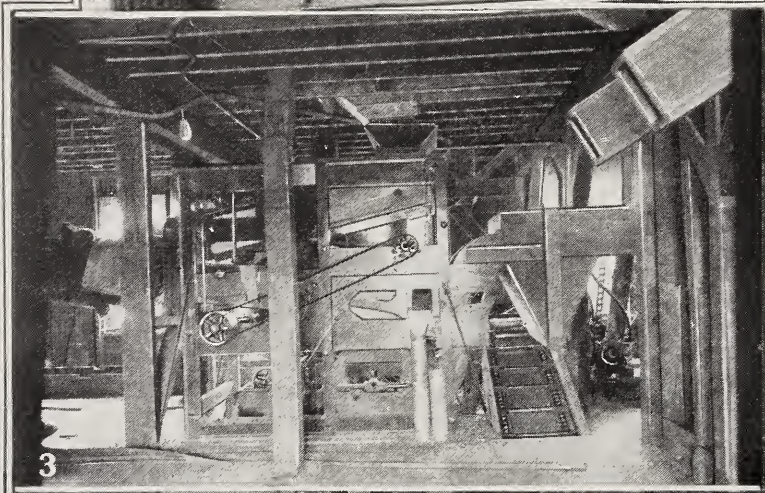
OUR GUARANTEE

You are given twelve days in which to test this corn. If you find it unsatisfactory in any way, return it to us, at our expense, within the above limit and we will refund the purchase price. Guaranteed germination 95 per cent or better.

NOTICE.

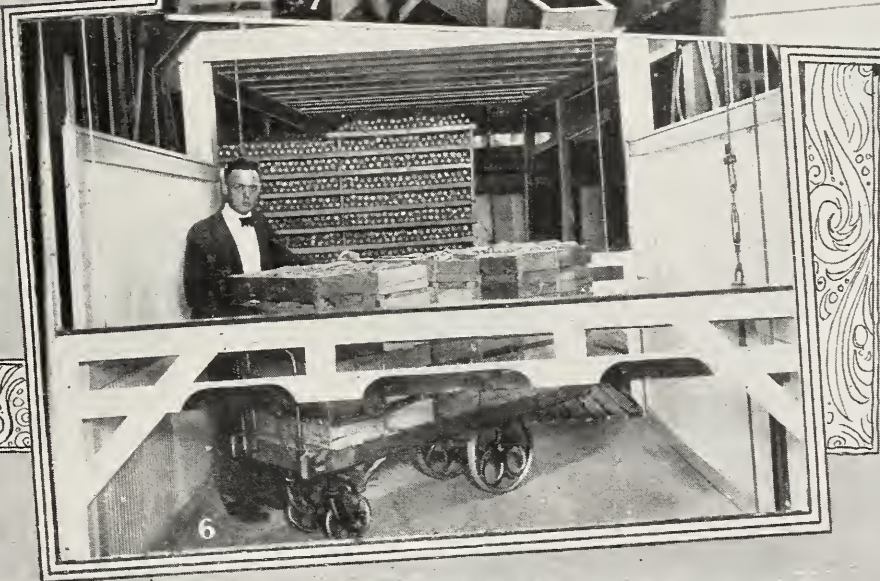
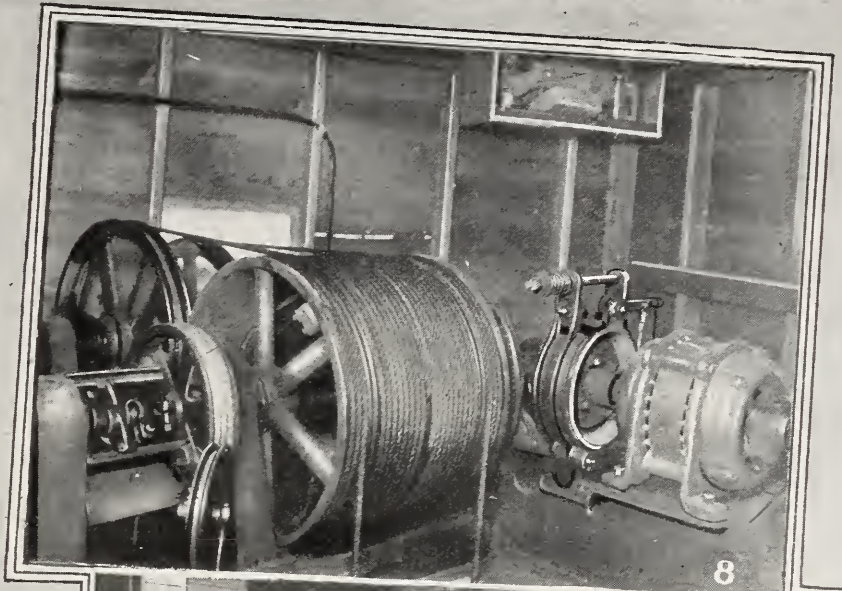
If you wish to return corn for any reason it must be returned by freight otherwise you must pay return charges.

INTERIOR OF MAMMOTH DRYING



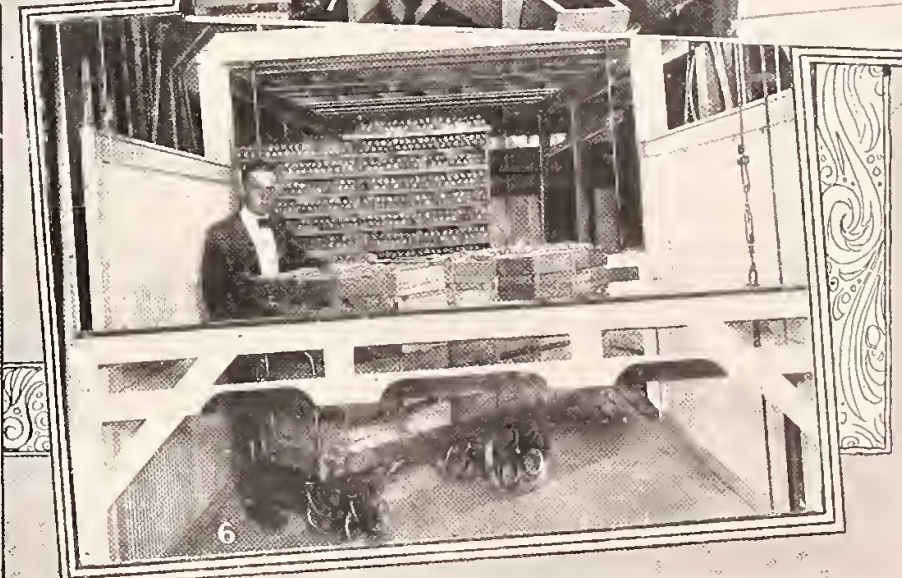
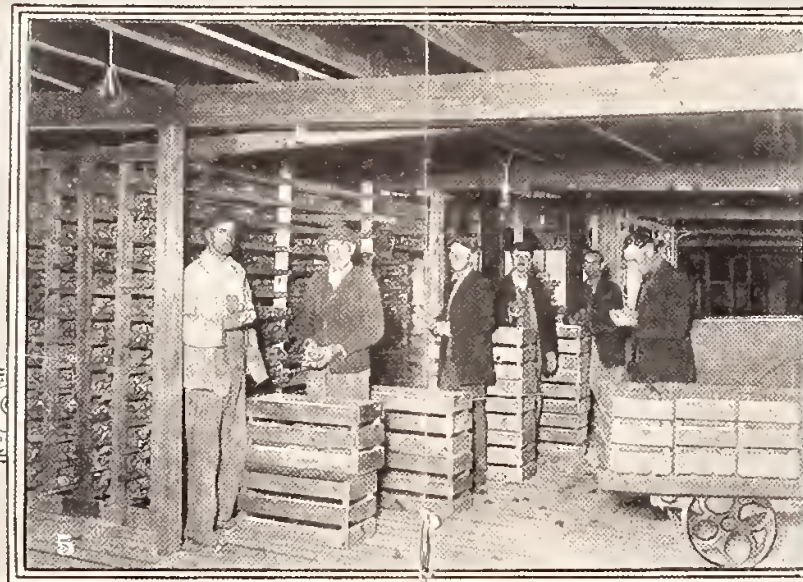
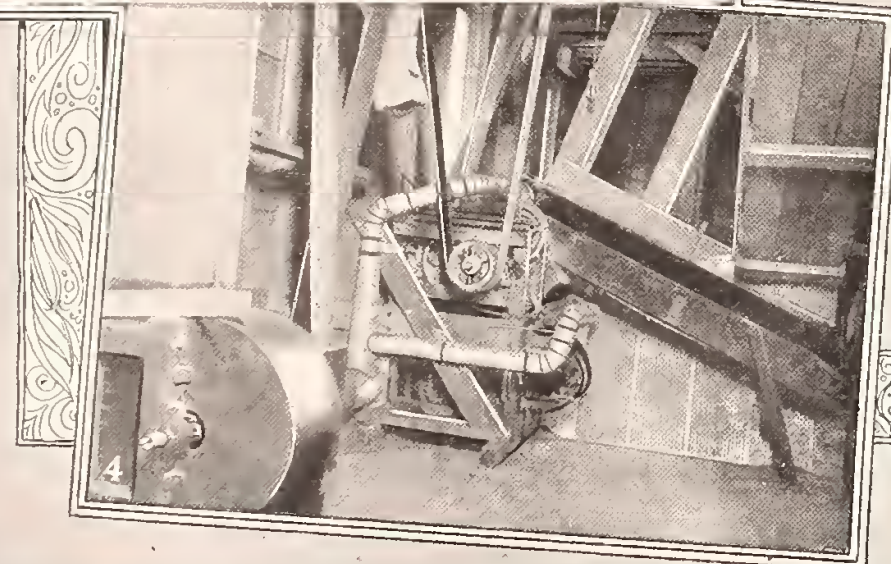
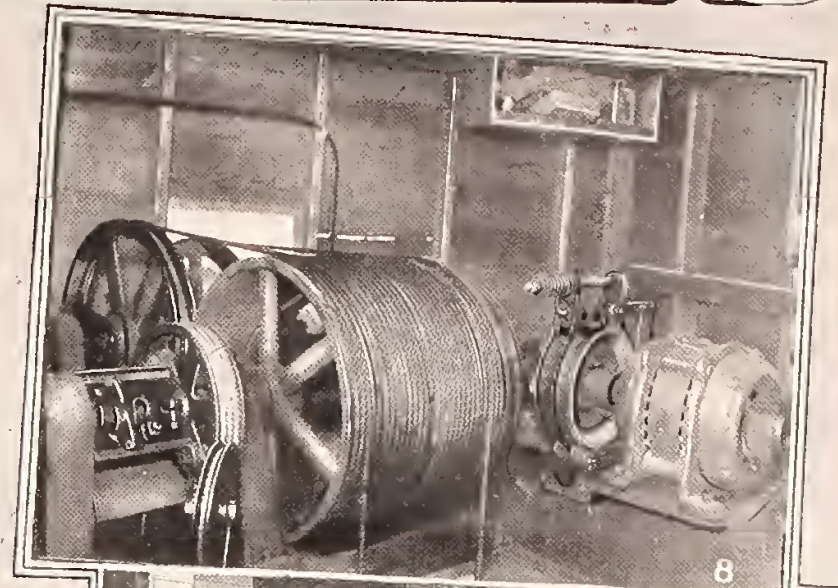
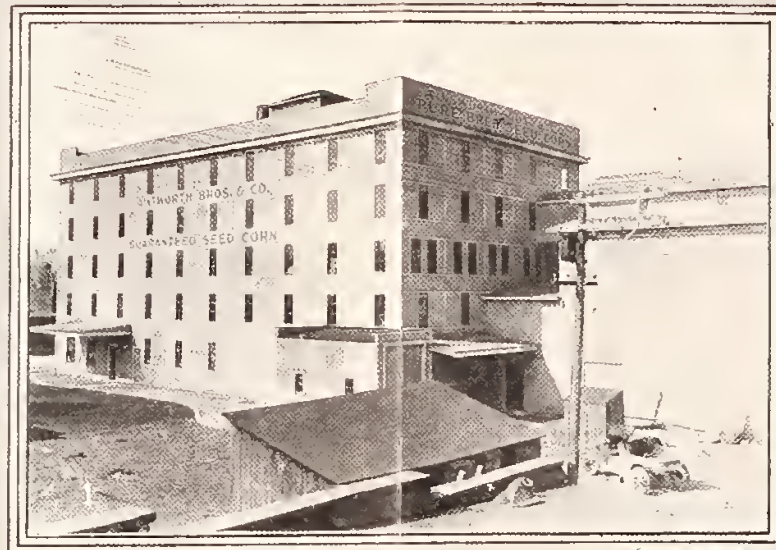
1. View of Plant. 2. Private Office. 3. Corn grade; corn from this machine is graded by hand grader. 4. Sheller; we use a two-hole sheller as it does not require sorting and testing. 6. Freight elevator. 7. Nubbing room and the butts and tips removed. 8.

VIEWS OF R SEED CORN PLANT



machine is more uniformly graded than is possible from any fan mill or
 crack the corn. 5. Taking corn from drying racks for final
 m; every ear to be shelled is carefully examined in this
 motor operating elevator, shown in Fig. 6.

INTERIOR VIEWS OF OUR MAMMOTH SEED CORN DRYING PLANT



1. View of Plant. 2. Private Office. 3. Corn grade; corn from this machine is more uniformly graded than is possible from any fan mill or hand grader. 4. Sheller; we use a two-hole sheller as it does not crack the corn. 5. Taking corn from drying racks for final sorting and testing. 6. Freight elevator. 7. Nubbing room; every ear to be shelled is carefully examined in this room and the butts and tips removed. 8. Motor operating elevator, shown in Fig. 6.

Reid's Yellow Dent

Our Reid's Yellow Dent is the latest maturing variety of corn we handle. We cannot recommend this corn too highly. The late strain as a rule is safe from frost in 115 to 120 days. The medium strain is a little earlier and matures in about 105 to 110 days.

Reid's Yellow Dent is perhaps the most popular variety of corn in the entire corn belt. The kernels are deep, every other row dovetailing together. Percentage of grain to the cob is unusually high on this corn. We have bred this corn to a medium rough type, as that is the type most desired by farmers.

We recommend this corn as the best yellow corn for ensilage purposes. Our late Reid corn will produce more bushels per acre than any other corn we handle, providing you have a sufficiently long growing season. But we wish to impress on our customer's mind that unless you are sure you have the proper length of season we urge you to plant some of our earlier maturing varieties, as nothing cuts down your yield more than planting a corn that is too late for your locality.

We can furnish this corn in either the late or medium maturing strains.



PRICES: Ear corn in bushel crates \$3.50. One bushel and up (sacks free) shelled and graded ready for planting, \$3.00; one-half bushel \$1.75; one peck \$1.00. One ear postpaid 50 cents.

FIRST PRIZE ON OUR YELLOW DENT AND SILVER MINE

Coal Bluff, Ind., Oct. 11, 1922.

Ainsworth-Boone Co.,
Kentland, Ind.

Gentlemen:

The grading of the seed corn I purchased from you this season was surely fine and I got a very good stand. The yield was fine and although we had a prolonged drought came up to my expectations and better than I expected on account of dry weather. My son took Yellow Dent and Iowa Silver Mine to the fall festival at Brazil and took first prize on both. Am well pleased.

Truly yours,

EPPERT & SONS.

REID'S YELLOW DENT O. K.—COULD NOT BE BETTER

Union City, Ind., Oct. 17, 1922.

Ainsworth-Boone Co.,
Kentland, Ind.

Dear Sirs:

The Reid's Yellow Dent surely is a fine corn. Planted on May 28th and is ready to crib. Yield about 80 bu. to the acre. It is the best eared corn in this locality. I am well pleased with the corn and my neighbors say it is the best field of corn they ever saw.

Germination was 100 per cent, also the grading. Corn O. K. and could not be better.

Yours truly,

J. B. DENLINGER.

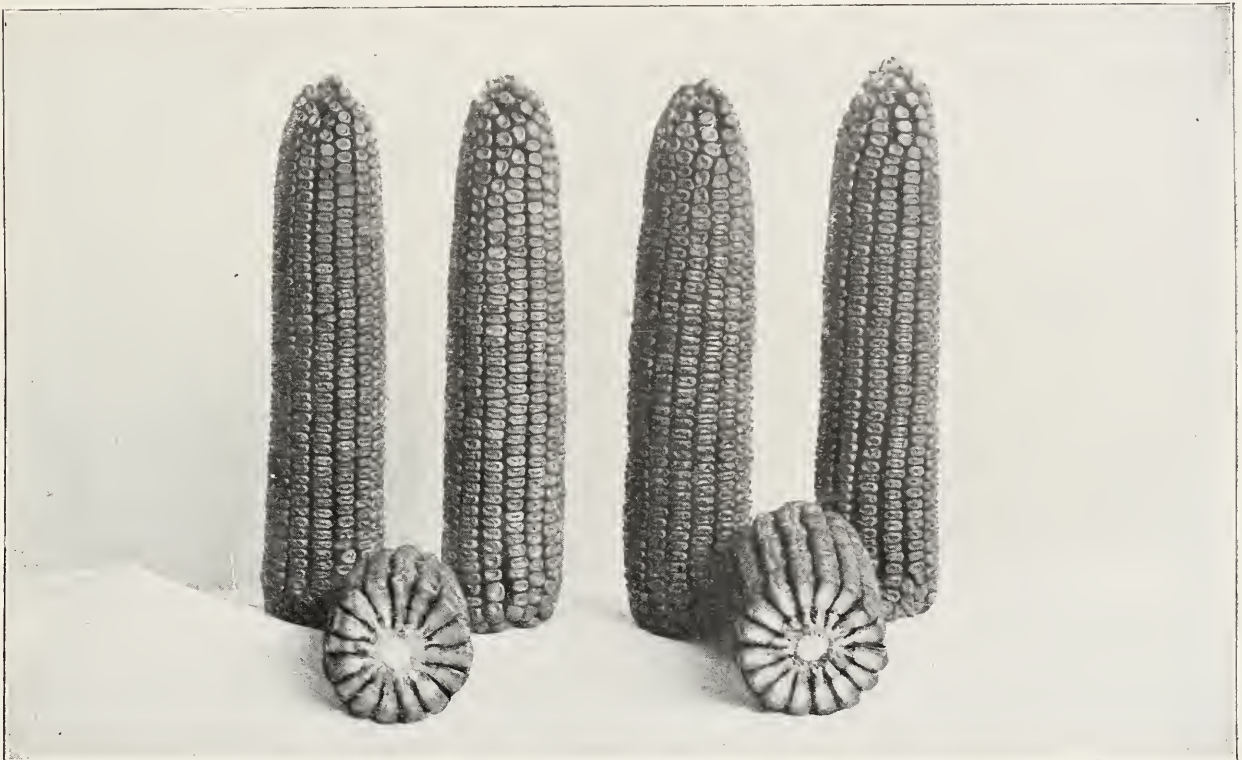


Golden Standard Leaming

Leaming is the oldest variety of dent corn known. It was originated by J. S. Leaming, near Wilmington, Ohio, in 1826. Even at that early date, before modern corn breeding came into effect, it was noted for its fixed type.

We have bred this corn so that it is earlier in maturing than the common strains, maturing in from one hundred to one hundred and ten days.

Golden Standard Leaming is of a deep golden color, well filled at butt and tip. The rows of kernels are very straight and distinct. The ears range from seven to ten inches in circumference, from nine to eleven inches in length and will weigh from twelve to seventeen ounces. Stalks are from eight to ten feet high. This corn is a great favorite in dairying and cattle feeding districts and is well adapted to a wide range of country. Leaming corn does not become flinty as other varieties of dent corn, which is an advantage when used for feeding purposes. We also recommend it as an ensilage corn.



PRICES: Ear corn in bushel crates \$3.50. One bushel and up (sacks free) shelled and graded ready for planting, \$3.00; one-half bushel \$1.75; one peck \$1.00. One ear postpaid 50 cents.

WOULD NOT PLANT ANYTHING BUT A-B. SEED.

Eaton, Ohio, Oct. 13, 1922.

Ainsworth-Boone Co.,
Kentland, Ind.

Gentlemen:

I have used your corn for five years and I would not think of planting any other variety. The Improved Golden Leaming is a great corn. My corn, on upland, is making around 70 bu. per acre. The seed I got was perfect in grading and germination and ears out low, which makes convenient husking. I have no fault to find and my advice to others is to get in the pure seed line.

Very respectfully yours,

R. R. No. 7.

E. J. ASHMAN.

A-B. SEED CHEAPER THAN OWN CORN

Goodland, Ind., Oct. 18, 1922.

Ainsworth-Boone Co.,
Kentland, Ind.

Gentlemen:

We used your seed corn on Maybrook farm last year and found that it was well graded and came up to our expectations in every way. I believe that if a person's time and trouble are figured you will find that it is cheaper to purchase A-B Seed Corn.

Respectfully yours,

CHAS. M. McKEE.

A-B Seed Is Guaranteed

Silver Mine The World's Best White Variety

Silver Mine corn is becoming more popular every year and it seems impossible to supply the demand for this splendid corn. This corn is also very popular in Iowa and is known as Iowa Silver Mine. It is the only white variety we handle.

This corn has many desirable features, the ears being well filled and the grains very close together. It is also an exceptionally good sheller. The stalks of this corn do not grow as tall as the Reid's Yellow Dent, nor is the fodder quite so heavy, and for this reason it will stand dry weather unusually well. This corn gives good yields even when planted on poor soil. Silver Mine will produce an ear when other varieties only send forth a shoot.

The many phases of unfavorable conditions of the past year have demonstrated the wonderful vitality of this corn, and locally we expect to sell twice the number of bushels of Silver Mine as heretofore.



PRICES: Ear corn in bushel crates \$3.50. One bushel and up (sacks free) shelled and graded ready for planting, \$3.00; one-half bushel \$1.75; one peck \$1.00. One ear postpaid 50 cents.

SILVER MINE MAKES STEADY GROWTH

Decatur, Ind., Oct. 18, 1922.

Ainsworth-Boone Co.,

Kentland, Ind.

Gentlemen:

The corn purchased from your firm last spring looked, and was, very fine. I really think I had the best eared corn in my community. It fully came up to my expectations. The Silver Mine corn seemed to make a steadier growth during the hot, dry season we had this summer than corn of other varieties I had planted. Will call upon you in season next year for more corn.

Yours truly,

W. F. BEERY.

SILVER MINE GREW WHEN OLD VARIETY FIRED

Valparaiso, Ind., Oct. 14, 1922.

Ainsworth-Boone Co.,

Kentland, Ind.

Gentlemen:

Your Iowa Silver Mine was planted in low marsh soil for ensilage on May 17th along with seed I had always used for silage. No marked difference was noticed until our long dry spell, when my old variety fired, but the Silver Mine continued to stay green and grew steadily. At silo filling time I estimated the old variety to go four tons less per acre and of inferior quality.

A satisfied customer,

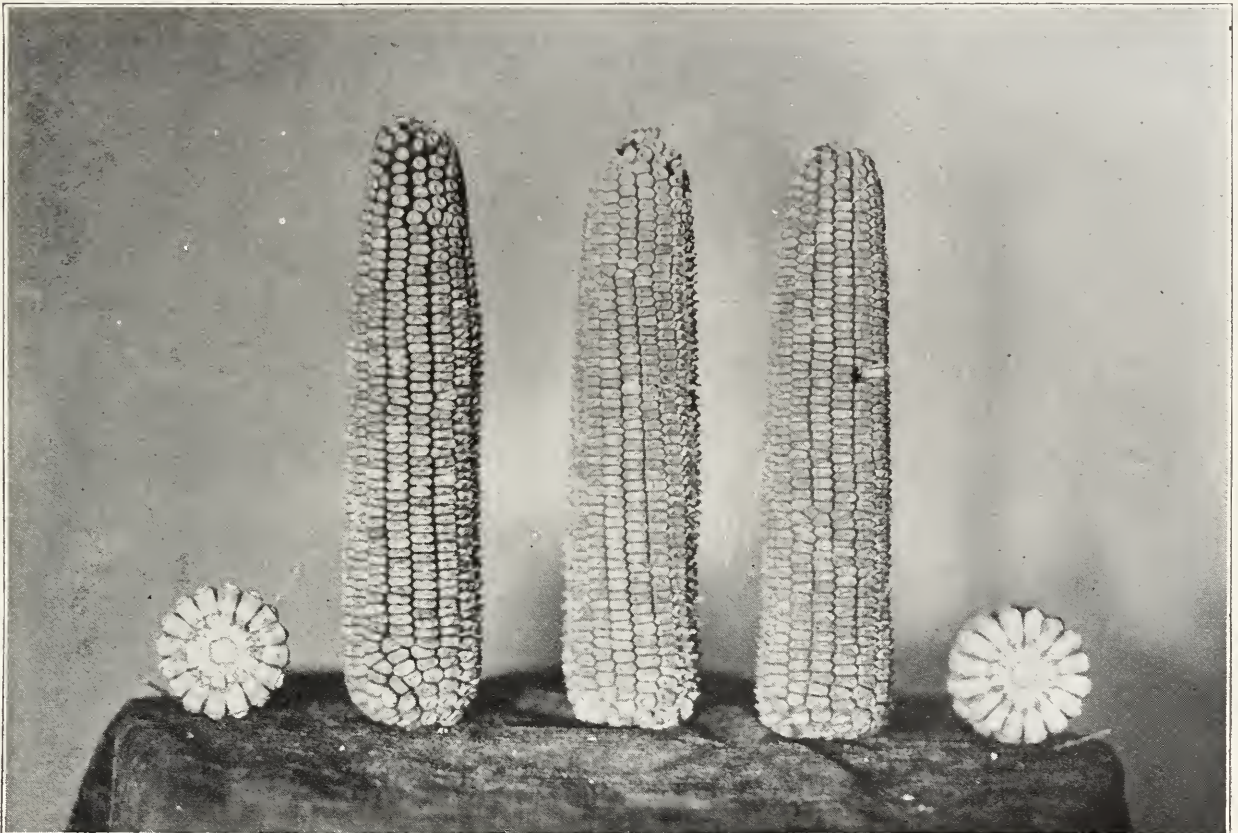
LEE I. HODSDEN.

Ainsworth's Ninety Day

Our Ninety Day corn is a few days later than our Early Dent. The ears average about one inch shorter than Reid's Yellow Dent, the ears being very firm and solid and the grains set compactly on a very small cob.

In the breeding of this corn we have endeavored to combine early maturity with good yields. As a rule, early maturing corn is a poor yielder. Our Ninety Day Corn, according to our experience, will yield within about 5 per cent of our other varieties when planted at the same time. This corn can be planted as late as June 10 in this latitude and still mature with Reid's Yellow Dent planted 15 to 20 days earlier, and will out-yield late maturing corn planted at that time, besides being out of the way of the frost.

Our Ninety Day corn is especially valuable to the farmer of central Indiana and Illinois who wishes to follow corn with wheat, as it matures so early it can be husked out and the ground prepared for wheat. This corn is a special favorite to the stock man who wishes early feed. We consider this an ideal corn for the latitude of northern Illinois. We also urge the farmers of Kansas and Oklahoma to try this corn, as it matures before the drought sets in. For replanting, this corn is invaluable.



PRICES: Ear corn in bushel crates \$3.50. One bushel and up (sacks free) shelled and graded ready for planting, \$3.00; one-half bushel \$1.75; one peck \$1.00. One ear postpaid 50 cents.

90 DAY CORN MORE THAN REPRESENTED

Kentland, Ind., Oct. 29, 1922.

Ainsworth-Boone Co.,
Kentland, Ind.

Gentlemen:

Your Ainsworth 90-Day Corn was everything and more than represented. The appearance and grading were excellent, in fact, the grading was superior to anything I have ever seen. It matures well ahead of our earliest frosts and is one of the best varieties of early corn I know of.

It has a splendid ear, good size for early corn, the grains are deep and well set on a smaller cob than most early corn.

We used this corn very effectively on some ground we had to replant and on other ground we wished to husk early to follow with wheat. I can highly recommend it as a splendid variety of early corn.

Yours truly,

J. D. RATHBUN.

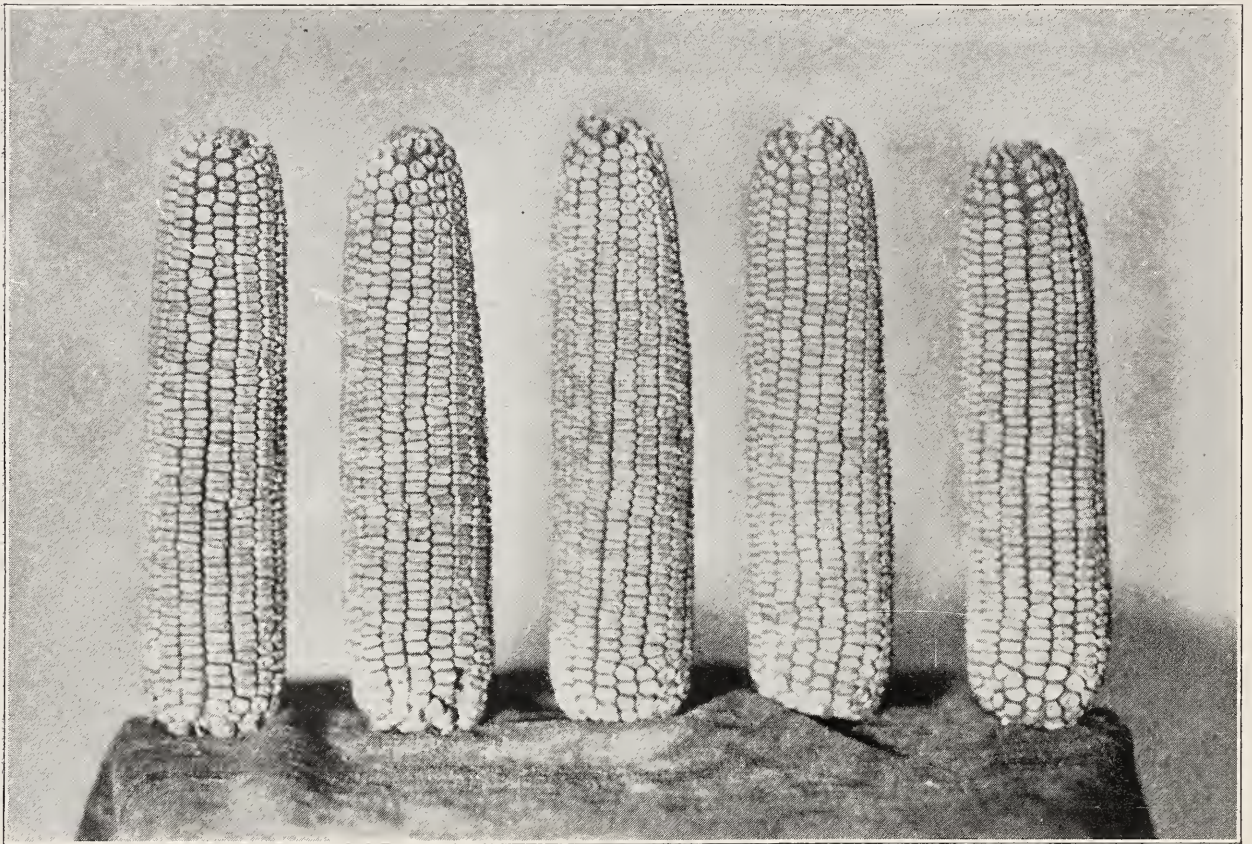
Mgr. Geo. Ade Farms.

High Yielding Type Reid's Yellow Dent

In selecting this particular type of Reid's Yellow Dent the old show type standards have been done away with, the corn being selected entirely along high yielding lines. The ears are not as large in diameter as the old standard Reid's, having only from sixteen to eighteen rows, and the rows are paired less distinctly. The ear is irregular in appearance and the grain rather thick in comparison to width. The grain is of a smooth type and has a high per cent of oil.

Our high yielding Reid's is not a rank growing variety, even on rich ground it does not produce an abundance of foliage. The stem itself is short and of a finer texture. This variety of corn will stand adverse conditions unusually well and in bad years it will give a fair yield when other varieties are failures.

We believe this is a good corn to tie to, as it is one of the highest yielding varieties we handle. But we would not advise planting this variety if one is entering corn shows and wishes a large number of show type ears to select from.



PRICES: Ear corn in bushel crates \$3.50. One bushel and up (sacks free) shelled and graded ready for planting, \$3.00; one-half bushel \$1.75; one peck \$1.00. One ear postpaid 50 cents.

HIGH YIELDING VARIETY VERY SATISFACTORY

Ainsworth-Boone Co.,
Kentland, Indiana.
Gentlemen:

Kentland, Ind., Oct. 22, 1922.

Your High Yielding variety of Reid's Yellow Dent is one of the best varieties of corn I have ever planted. I found it to be one of the most irregular types but the additional yield, which we all want, concerns me more than a lot of prizes for prizes won't pay bills. The corn grew as well on some of my poorer ground as other varieties planted on rich soil.

I can recommend it highly to anyone looking for more bushels per acre.

Very truly,

ELMER MURPHY.



A Letter From the Governor of Indiana

WARREN T. McCRAY
KENTLAND, INDIANA

December 21, 1922.

To Whom it May Concern:

My dear Sir:

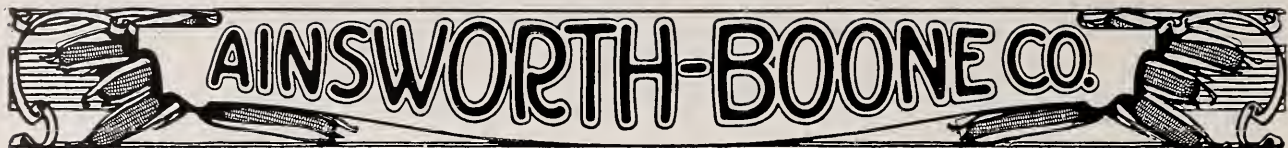
It gives me pleasure to recommend the Ainsworth Boone Company and to say that they are young men of the highest integrity and their word can be relied upon explicitly.

They are seeking to build up a reputation in the seed corn business and they are naturally anxious to serve the people well and truthfully. They are experts on seed corn and are better equipped to handle it than any one else in the business.

Assuring you that you will not be disappointed in your dealings with them, I am

Very truly,

Warren T. McCray



Do You Know Any of These Men?

It is only possible for us to publish a very few of the thousands of testimonials received in answer to our yearly inquiry.

Here is a summary of a few letters from customers throughout our territory. Should there be any doubt in your mind as to the merit of our produce we request that you communicate with any of the following men.

INDIANA

		Appearance Grading	Maturity	Comparative Yield	Expectation
Akron	C. H. Hoffman	Good	O. K.	Good	Equalled
Alamo	H. J. Gilkey	O. K.	Good	Exceeded expectations	
Alexandria	J. W. Draper	A. No. 1	O. K.	Good	Beyond
Anderson	S. G. Prather	Fine	Satisfactory	Good	Beyond
Atlanta	Theo. Carroll	All right	Good	Dry weather cut crop	
Battle Ground	H. M. Hartman	Good	Good	Better than average	
Boswell	J. J. Borders	Very good	Good	50-60 bu.	Equalled
Brook	R. L. Weldon	Fine	All Right	Better	Exceeded
Brooksbury	D. S. Gunnion	Good	Good	Average	
Brownstown	Jacob Reedy	Very good	Early	Good as best	
Bunker Hill	Omer Reynolds	Good	Early	Good	Well pleased
Camden	Clarence Cree	Good	Earlier	Good	Satisfied
Clay City	C. E. McQueary	Good	Good	Above average	Satisfied
Crown Point	Carl E. Pfiel	Fine	Good	15 bu. above average	
Danville	W. W. Hadley	Excellent	Very good	Average or better	
Earl Park	W. J. Donohue	Excellent	Very good	Above average	Beyond
Forest	G. M. Hobson	Good	Very good	Very satisfactory crop	
Fowler	W. G. Louks	Good	Early	More than own seed	
Freedom	Thos. Strouse	Good	Sept. 15	60-70 bu.	Equalled
Fulton	R. E. Mills	Evenly graded	O. K.	55 bu.	Better
Goodland	J. H. Hanna	Excellent	Good	Fair	Equalled
Greentown	J. W. Horner	Good	Very good	Good as other corn	
Hadley	Seth T. Hadley	Well pleased	Very good	Good	Exceeded
Hartford City	Henry A. Boots	Good	Good	Above average	Equalled
Idaville	A. A. Harrison	Good	Good	50 bu.	Equalled
LaFayette	D. S. Fletcher	Very good	Good	Good	Equalled
Logansport	Chas. Dodds	Good	Good	Very good	Satisfied
Lake Cicott	B. Nethercutt	Very good	Good	Good	Better
Ladoga	J. S. Chaudoin	Fine	Very Good	Above average	Exceeded
Leiters Ford	J. L. Johnson	Fine	Good	Above average	Exceeded
Marion	Sam Blair	Excellent	Good	Near 90 bu.	Satisfied
Marysville	J. Q. Carroll	Very good	Good	Drought hurt yield	
Monticello	B. A. Goslee	Very good	Good	Average	Equalled
Nappanee	J. D. Mullett	Good	Medium	Fair	Equalled
North Salem	J. Henry Clay	Excellent	Good	Extra good	Beyond
New Haven	Rorick Bros.	Fine	Good	Better than average	
Otterbein	Avery Hawkins	O. K.	Good	Good	Equalled
Patriot	E. Buddenberg	O. K.	Very good	10% better	Equalled
Petersburg	T. Carol Thomas	Uniform	Very good	Good in spite of drought	
Royal Center	J. C. Small	Excellent	Good	Better than any in neighborhood and best on this farm.	
Russellville	H. M. Grimes	Excellent	Good	10-25% better	Equalled
Selma	Lewis Gates	Good	Very good	Above average	Equalled
Seymour	Fred Duwe	Good	Very good	10 bu. more per acre	
Syracuse	W. C. Gants	O. K.	Good	Better than others	
Vincennes	E. E. Parrett	Fine	Good	Higher	Equalled
Veedersburg	Thos. Stucker	Fine	Very good	Good	Exceeded
Washington	Ben Brown	Good	Early	Very good	Satisfied
Winamac	Chas. Reinholdt	Good	Good	Above average	
Yorlcott	Geo. W. James	Good	Good	Better	Equalled
Yorktown	Albert Sollars	Well pleased	Good	Better	Equalled



ILLINOIS

		Appearance Grading	Maturity	Comparative Yield	Expectations
Ashkum	John S. Herr	Very best	Good	Good considering drought	
Donovan	H. O. Taylor	Good	Good	Satisfactory	Equalled
Crescent City	W. S. Malaney	Splendid	Very good	Good	Equalled
Fairbury	John Hoerr	Fine	Very good	35 bu. on poorest soil	
Henning	T. J. Watson	Good	O. K.	Satisfactory	Equalled
Hoopeston	Harry E. Finch	Excellent	Good	Very good	Equalled
Marseilles	Claus Bock	Very best	Good	Beyond expectation	
Martinton	R. W. Reinhard	Fine	Good	About same	Equalled
Milford	S. K. Nolin	Fine	Very good	Better	Exceeded
Ridgefarm	L. P. Baldwin	O. K.	Very good	Satisfactory	Exceeded
Saunemin	C. A. Ridinger	O. K.	Good	Very good	Equalled
Sheldon	E. A. Mayo	Good	Good	Better	Equalled
Thawville	A. E. Stiegman	Excellent	Satisfactory	Good	Equalled
Valmeyer	Wm. Goldschmidt	Good	Satisfactory	ood considering drought	
Wellington	Ed Chaney	Good	Satisfactory		

OHIO

		Appearance Grading	Maturity	Comparative Yield	Expectations
Ada	Geo. Slesman	Very good	Good	Good	Beyond
Blanchester	Dan Sears	Good	A little late for the locality	Average	Equalled
Brookville	A. H. Marshall	O. K.	Satisfactory	Good	Equalled
Campbellstown	W. T. Weist	Very good	Earlier	50-60 bu.	Equalled
Cleveland (12900 Miles Ave.)	L. A. Boyd	Good	Good	Best in the neighborhood	Exceeded
Convoy	F. E. North	Good	O. K.	Average	Equalled
Covington	W. H. Ganger	Fair	Good	Fine	Equalled
Custar	Loren E. Groff	Excellent	Good	Very good	Equalled
Delta	Bruce Fiser	Well pleased	Good	Good	Equalled
Dola	L. B. Matson	O. K.	Satisfied with the corn		
Edon	W. P. Faulhaber	Good	Good	Better	Satisfied
Franklin	Wm. Gregg	O. K.	Corn had no chance on account of the dry weather.		
Harrod	Brice C. Miller	O. K.	Good	Very good	Equalled
Jenera	Adam Wilson	Excellent	Good	70-80 bu.	Equalled
Lima	Jos. H. Miller	Very good	Very good	Your corn will yield from 3 to 5 bu. more than ordinary corn.	
Rawson	A. G. Heldman	Good	Satisfactory	Better	Equalled
Sardinia	Ed Maul	O. K.	Satisfactory	Above average	Equalled
Sidney	Farmers Exchange	Good	Satisfactory	Very good	Equalled
Somerville	E. C. Mendenhall	Satisfactory	Good	Equal to any in locality	
Spencerville	C. I. Foust	Fair	Good	Good considering weather	
Warnock	Orville Ramsey	O. K.	Good	Satisfactory	Equalled

GRADING FINE, PLANTED TWOS AND THREES ALL DAY

Rossville, Ind., Oct. 18, 1922.

Ainsworth-Boone Co.,
Kentland, Ind.

Dear Sirs:

The appearance and grading of the seed corn I purchased from you last spring was all right. I had my planter set for 2 grains and it planted 2 and 3 grains all day. The yield was good compared to other corn in my locality considering the season. It is yielding 50 bu. per acre. The seed came fully up to my expectations. This is

the second time I have purchased seed from you and I can recommend it to any one.

Very respectfully,
BIVON KINZER.

15 TO 20 BUSHEL MORE THAN OWN SEED

Otterbein, Ind., Oct. 16, 1922.

Ainsworth-Boone Co.,
Kentland, Ind.

Gentlemen:

The Yellow Dent seed corn purchased from you last spring was all you recommended it to be. I have a yield of 65 or 70 bu. per acre from it and only 50 or 55 where I used my own seed.

Very truly yours,
JOHN M. LUGAR.

R. R. No. 1.



What Our Bankers Say



KENT STATE BANK

CAPITAL \$50,000.00
SURPLUS \$45,000.00

KENTLAND, IND. January 1, 1923

Discount & Deposit State Bank

ESTABLISHED 1873

CAPITAL AND SURPLUS \$ 1,300,000.00

KENTLAND, INDIANA.

January 1st, 1923

TO WHOM IT MAY CONCERN:

We are pleased to recommend to you the firm of Ainsworth Boone Company, who are engaged in the pure-bred seed corn business in this city.

The above concern is located in the heart of the corn producing country. They are experts in their line and are financially responsible.

Yours very truly,

KENT STATE BANK

S. P. Saylor
Cashier

TO WHOM IT MAY CONCERN:

It is with pleasure, that I recommend to the general public, the firm of Ainsworth & Boone, as being men of integrity and uprightiness, and thoroughly reliable from every point of view

They have recently erected in our city, what is probably the most complete and modern building of its kind, devoted exclusively to the business of handling and preparing seed corn for the market

You can rest assured that any contracts entered into with the above named firm, will be carried out to the letter.

Yours very truly,

DISCOUNT & DEPOSIT STATE BANK

Harriet J. McCray
President

What Our Grain Dealers Say

HARLAN GRAIN COMPANY

WHOLESALE GRAIN MERCHANTS

KENTLAND, INDIANA.

January 12th., 1923.

To Whom It May Concern:

We are indeed glad to recomend to the public the firm of Ainsworth-Boone Company of this place.

We find them to be experts in the selection and preservation of seed corn. We feel free to recomend them to anyone needing anything in their line.

They are financially responsible and are strictly honest and honorable in every way.

Yours very truly,

Harlan Grain Co
C. C. Harlan

ATKINSON GRAIN CO.
ATKINSON, IND.

W. F. STARZ & CO.
POWLER, IND.

DUNNINGTON GRAIN CO.
DUNN, IND.

WADENA GRAIN CO.
WADENA, IND.

OFFICE OF

Kentland Grain Company

KENTLAND, INDIANA

January-12-1923.

TO WHOM IT MAY CONCERN :

We heartily recomend the Ainsworth-Boone Co, as young men of sterling character and honorable in all their dealings.

I have personally known the Ainsworth family for many years, and know them to be successful farmers and experts in the seed corn business. Mr Boone who is associated with them, is an honest, upright young man, and also an expert in this line.

We are confident this firm is thoroughly reliable in every respect.

Very truly yours,

Kentland Grain Co,

W. Frank P. Starz



HOW TO ORDER

Write Your Name Plainly Your name, post office and state should be plainly written. If your shipping point is different from your post office address, give both.

How to Send Money By draft, check, post office money order, or currency if sent by registered letter at your risk. We have confidence in the farmer and do not hesitate to accept his personal check. This is generally the most convenient way to make remittance and is entirely satisfactory to us.

Shipment of Orders When no time is specified for shipment we use our own judgment and ship at our convenience, which is generally the same week that the order is received, providing cash accompanies the order. However, we are glad to store your seed in our plant until you are ready to use it. Our shelled corn is shipped in strong sacks, and our ear corn in well made crates. We furnish crates and sacks free of charge. When shipments are made to stations that have no agent pre-payment of charges is necessary. If you wish your corn shipped to such stations we ask that you add enough to your remittance to cover charges. If requested, we can tell you how much the charges will be or the same information may be obtained from your station agent.

Parcel Post Shipments Many of our patrons are taking advantage of the reasonable charges and convenient delivery on parcel post shipments of packages containing one bushel or under.

One peck shelled corn1st and 2nd zone 18c; 3rd zone 34c.
One-half bushel1st and 2nd zone 34c; 3rd zone 63c.
One bushel1st and 2nd zone 63c; 3rd zone \$1.21.

First and second zones include radius of 150 miles and third zone includes radius of 300 miles.

Order Early Please order as early as possible. This will enable us to give you better service. We will store the corn until you are ready for the shipment. If your order is received in January or February, we can generally fill it with any of the varieties listed in our catalog. Later in the season our stock is somewhat broken and we may be out of the variety you desire. We never substitute without the consent of the purchaser.

Our Financial Responsibility We refer you to the Discount and Deposit State Bank or to the Kent State Bank, both of Kentland, Indiana. Either of these banks can furnish you with our financial standing if you care to make inquiry. (See Bankers' Letters.)

Our Location For the benefit of those desiring to visit our plant this winter we wish to inform them that we are located directly across the street from the Pennsylvania station and two blocks east and two blocks south of the New York Central Station.

Address:

AINSWORTH-BOONE COMPANY
KENTLAND, INDIANA

A Summary of Facts

Concerning

Our Pure Bred Seed Corn

WE are seed corn specialists. We handle no other seeds.

OUR plant is the most modern and best equipped seed corn drying plant in the United States. Our building is absolutely frost proof and contains about three hundred windows and doors which may be thrown open in good drying weather.

WE are the only firm using a wind blast to dry our seed, thus forcing the air through the corn, making our drying system perfect and giving our seed that vigor and vitality that so distinguishes it from other seed.

OUR corn is grown only on land which is best adapted for growing sound, prolific seed. KENTLAND has long been noted for its seed corn, its well drained, sandy, brown silt loam, maturing corn to perfection.

ONLY the select ears are used for seed. All corn unfit for seed is culled out, then dried and hauled to the elevators.

ALL crate corn is placed on racks, thus assuring perfect drying and a seed of high vitality and perfect germination.

WE absolutely guarantee all corn shipped from our plant. A germination guarantee is on every tag and our "money back" agreement goes with every bushel of seed shipped from our plant.



AINSWORTH-BOONE CO.
PURE BRED SEED CORN

SEED CORN

ENTRANCE

GUARANTEED