

WELCOME TO WISCONSIN

PREVENT FOREST FIRES
HELP KEEP OUR COUNTRY GREEN
WISCONSIN CONSERVATION DEPARTMENT



WISCONSIN COMMUNITIES WELCOME AND HELP INDUSTRY GROW
Industry Fact Kit available from the Governor's Office

WISCONSIN VACATIONLAND FOR ALL
The Wisconsin Human Rights Statute Sec. 942.04 guarantees full and equal enjoyment of all places of public accommodation or amusement alike to all persons of every race and color.

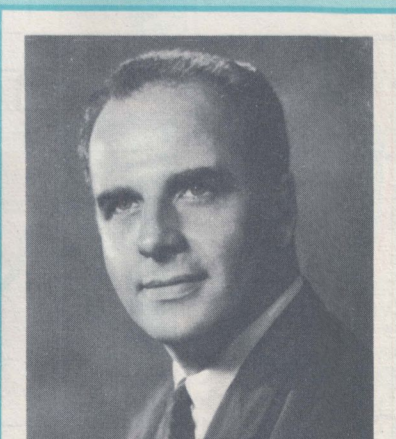
WISCONSIN
HIGHWAY MAP
1960

OFFICIAL
HIGHWAY MAP
OF
WISCONSIN
ISSUED 1960

Scale: 1 inch = approximately 14 miles

LEGEND

Rivers & Streams	Public Hunting & Fishing Grounds
Cities over 10,000	Four Lane or Dual Wayside
Community under 10,000	State Capitol
Railroad	Airport
County Boundary	State or Federal Institution
Lookout Tower	State or Federal Forest
Roadside Park	National Forest
Portland Cement or Bituminous Concrete	Public Camps & Picnic Grounds
Bituminous	Indian Reservation
Gravel or Stone	Forest Ranger Station
Interstate Highway Proposed	State Numbered Highways
County Park	Mileage between Towns & Junctions
County Trunk Unsurfaced	U.S. Numbered Highways
County Trunk Letter	Interchange
County Trunk Surfaced	Interstate Highway Completed
Seaplane Base	Four Lane or Dual
Lakes & Flowages	Fish Hatchery
	Dam
	County Seat
	Highway Separation
	State Park
	Scenic or Memorial



WELCOME TO WISCONSIN

- To its 9,000 lakes.
- To its 1,600 trout streams.
- To its 5 million acres of publicly owned forests.

Enjoy the play of the National Baseball League's famous Milwaukee Braves; and later in the year, the Green Bay Packers in the National Football League.

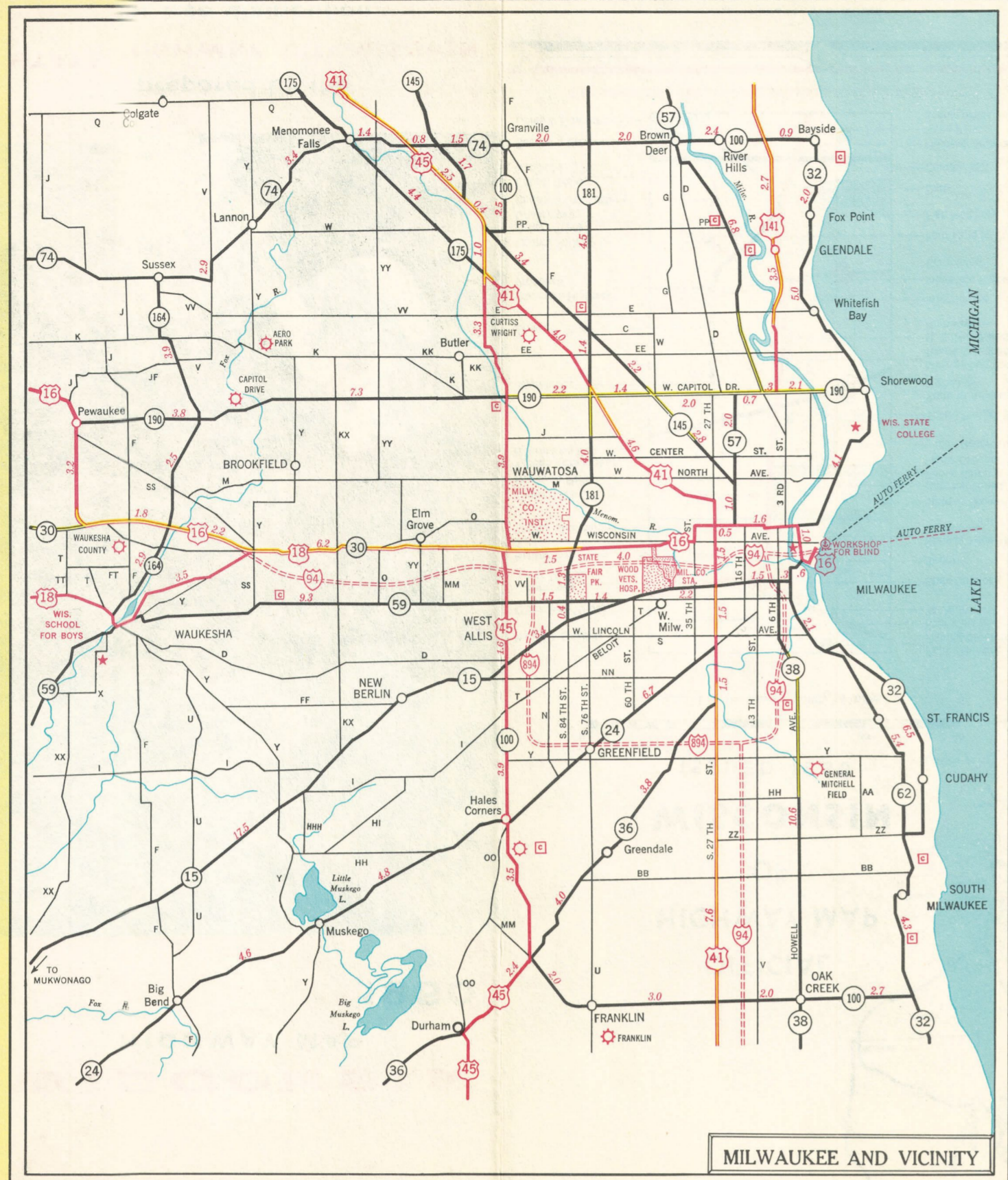
America's Dairyland offers one of our nation's widest ranges of outdoor recreational activities, from hunting and fishing to sailing, iceboating, skiing and water-skiing. All these await your pleasure, as do the hundreds of Old World restaurants and modern snackhouses that are scattered throughout our state.

Above all, only on the warm friendship and hospitality of the people of Wisconsin so that our state becomes for you, as it has for thousands of others, a second home.

In return, all we ask is that you drive carefully, so that both we and you can enjoy the pleasures of Wisconsin for years to come.

Gaylord Nelson
GAYLORD NELSON, Governor

prepared by the
STATE HIGHWAY COMMISSION
for free distribution

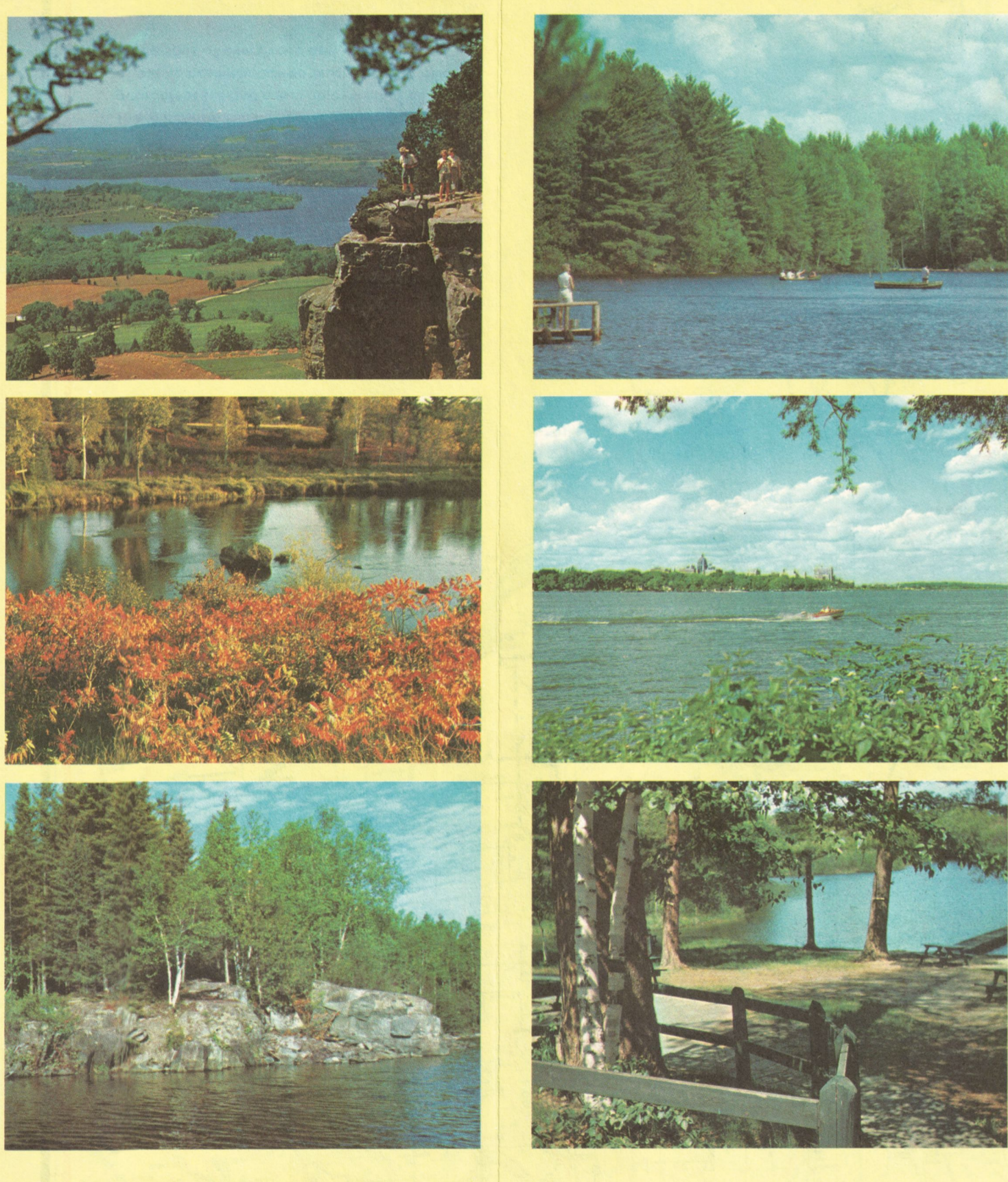
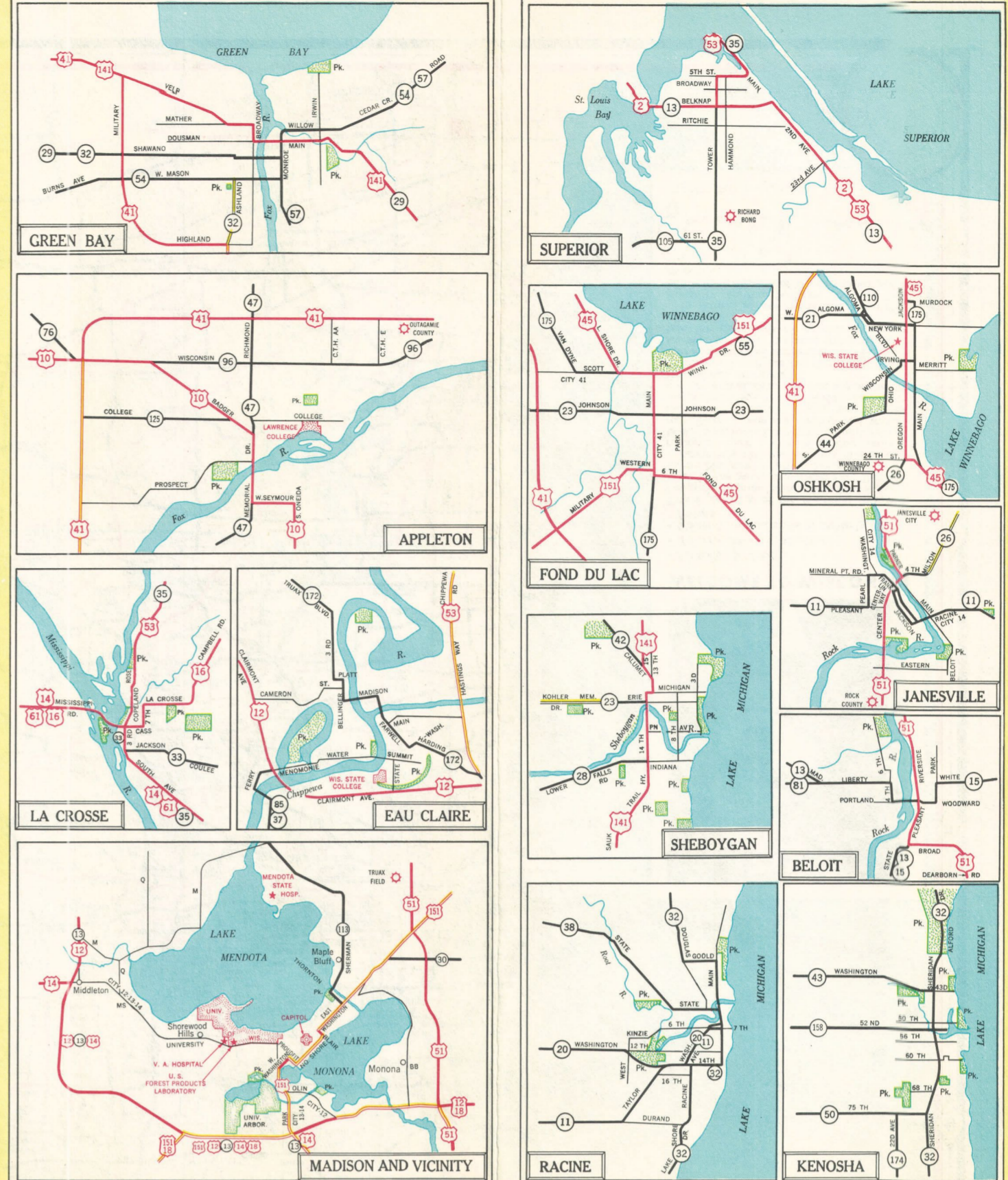


INDEX TO INCORPORATED VILLAGES AND CITIES

Population (1950) Census

Abbotsford, 1,013	5-E	Chaussegros, 219	8-D	Genoa Mills, 662	9-D	Madison, 96,056	10-F	Spring Valley, 935	6-B
Adams, 1,415	8-F	Chenega, 270	10-H	Genoa, 340	8-D	Madison, 96,056	10-F	Stanley, 2,014	5-D
Adams, 1,415	8-F	Chenega, 270	10-H	Genoa, 340	8-D	Madison, 96,056	10-F	Stanley, 2,014	5-D
Adams, 1,415	8-F	Chenega, 270	10-H	Genoa, 340	8-D	Madison, 96,056	10-F	Stanley, 2,014	5-D

-Indicates location of general hospital where first aid and medical attention are available.



WISCONSIN

State Bird—Robin

State Fish—Muskellunge

State Flag

State Flower—Wood Violet

State Song—On Wisconsin

State Tree—Sugar Maple

State Animal—Badger

State Wildlife Animal—White-Tailed Deer



HIGHWAY COMMISSION OFFICES

For detailed information concerning the condition of highways and detours, call or see the nearest State Highway Commission office.

County	Office Location	Telephone
Alcona	Alcona	347
Antigo	Antigo	285
Appleton	Appleton	250
Ashland	Ashland	250
Beaver Dam	Beaver Dam	250
Beloit	Beloit	250
Black River Falls	Black River Falls	250
Chicago, Ill.	Chicago, Ill.	250
Chippewa Falls	Chippewa Falls	250
Crandon	Crandon	250
Darlington	Darlington	250
Dodgeville	Dodgeville	250
Dodgeville, Ia.	Dodgeville, Ia.	250
Eau Claire	Eau Claire	250
Ellsworth	Ellsworth	250
Florence	Florence	250
Fort Atkinson	Fort Atkinson	250
Fond du Lac	Fond du Lac	250
Green Bay	Green Bay	250
Hayward	Hayward	250
Hudson	Hudson	250
Hurley	Hurley	250
Janesville	Janesville	250
Kenosha	Kenosha	250
Ladysburg	Ladysburg	250
Lake Geneva	Lake Geneva	250
Lancaster	Lancaster	250
Madison	Madison	250
Manitowish	Manitowish	250
Marshfield	Marshfield	250
Menomonie	Menomonie	250
Milwaukee	Milwaukee	250
Monroe	Monroe	250
Oshkosh	Oshkosh	250
Phillips	Phillips	250
Portage	Portage	250
Prairie du Chen	Prairie du Chen	250
Rainelle	Rainelle	250
Rhinelander	Rhinelander	250
Rhinelander Center	Rhinelander Center	250
St. Croix Falls	St. Croix Falls	250
St. Paul	St. Paul	250
Shawano	Shawano	250
Spoonerville	Spoonerville	250
Stevens Point	Stevens Point	250
Superior Bay	Superior Bay	250
Tomah	Tomah	250
Waubesa	Waubesa	250
Waupun	Waupun	250
Wausau	Wausau	250
West Bend	West Bend	250
Wisconsin Dells	Wisconsin Dells	250
Wisconsin Rapids	Wisconsin Rapids	250

STATE LAW REQUIRES STOP FOR SCHOOL BUSES

Wisconsin law (Section 346.48(1)) requires motorists to stop when meeting or overtaking a school bus which has stopped on the highway to load or unload passengers upon display of flashing red lights on the bus. Motorists must remain stopped until bus driver extinguishes flashing signals.

COMMERCIAL VEHICLE SPEEDS

Section 346.58(2) provides that vehicles or combination vehicles having gross weights more than 10,000 pounds (except buses) shall not travel at a speed in excess of 45 miles per hour.

MOTOR VEHICLE SIZE AND WEIGHT REGULATIONS

General Restrictions:

- Maximum Length of Single Vehicle: 35 Ft.
- Maximum Length of Vehicle and Load: 50 Ft.
- Maximum Width of Vehicle and Load: 8 Ft.
- Maximum Height of Vehicle and Load: 13 1/2 Ft.
- General Gross Weight: Class "A" 10,000 Lbs.; Class "B" 16,000 Lbs.

Restrictions:

- Gross Axle Weight: 18,000 Lbs.
- Gross Weight Formula: W=28,000+1000L (W=16,000+4000L)

"W" is the gross weight in pounds permitted on vehicle or axle combination, and "L" is the distance to the nearest foot between the foremost and rearmost axles under consideration.

Out-of-state registered trucks over 8,000 pounds gross must have a reciprocity permit before entering Wisconsin. Penalties are \$50 to \$200 and may include 1 to 7 cents per pound fine for weight violations above tolerance.

Subject to exceptions as specified in statutes.

*All highways are Class "A" unless otherwise designated by the maintaining authority.

RADAR DEVICES

The state and some counties are using radar devices for enforcement of speed laws. Rural speed limits are 65 by day and 55 by night, except as otherwise posted.

IN CASE OF ACCIDENT

The driver of a vehicle involved in an accident resulting in injury or death of any person or a total property damage to apparent extent of \$100 or more shall as soon as reasonably possible, report such accident to the local traffic enforcement officials, and within 10 days after such accident forward a written report of such accident to the Motor Vehicle Department, Madison, Wisconsin. Accident report forms may be secured from police departments, coroners, sheriffs, county clerks, insurance agents, county and state traffic officials.

Wisconsin law requires that you provide liability insurance coverage of \$10,000—\$20,000—\$5,000, meet alternate provisions or suffer suspension of your driving privileges. If you are a non-resident, reciprocal laws of your state may cause suspension.

FIRST AID SUGGESTIONS

By State Board of Health

When persons are injured in an automobile accident, the police should be notified at once.

In event of illness or accident while traveling, emergency medical aid can be obtained most quickly by calling or going to a general hospital in one of the cities marked on the index to incorporated cities and villages.

Victims of automobile accidents should be moved only by qualified persons such as physicians, police officers, firemen, ambulance personnel, or others trained in the handling of injured persons. Judgment must be used, of course, when the injured person is in danger of losing life or being further injured if he is not moved.

Until medical aid arrives, you should loosen the victim's clothing, especially around the neck. Stem the flow of serious bleeding with pressure dressings—wads of gauze or clean cloth held firmly against the wound.

PREVENTION OF INJURY

The Board of Health concurs in the recommendation of the State Medical Society urging the use of safety belts to prevent serious injury.