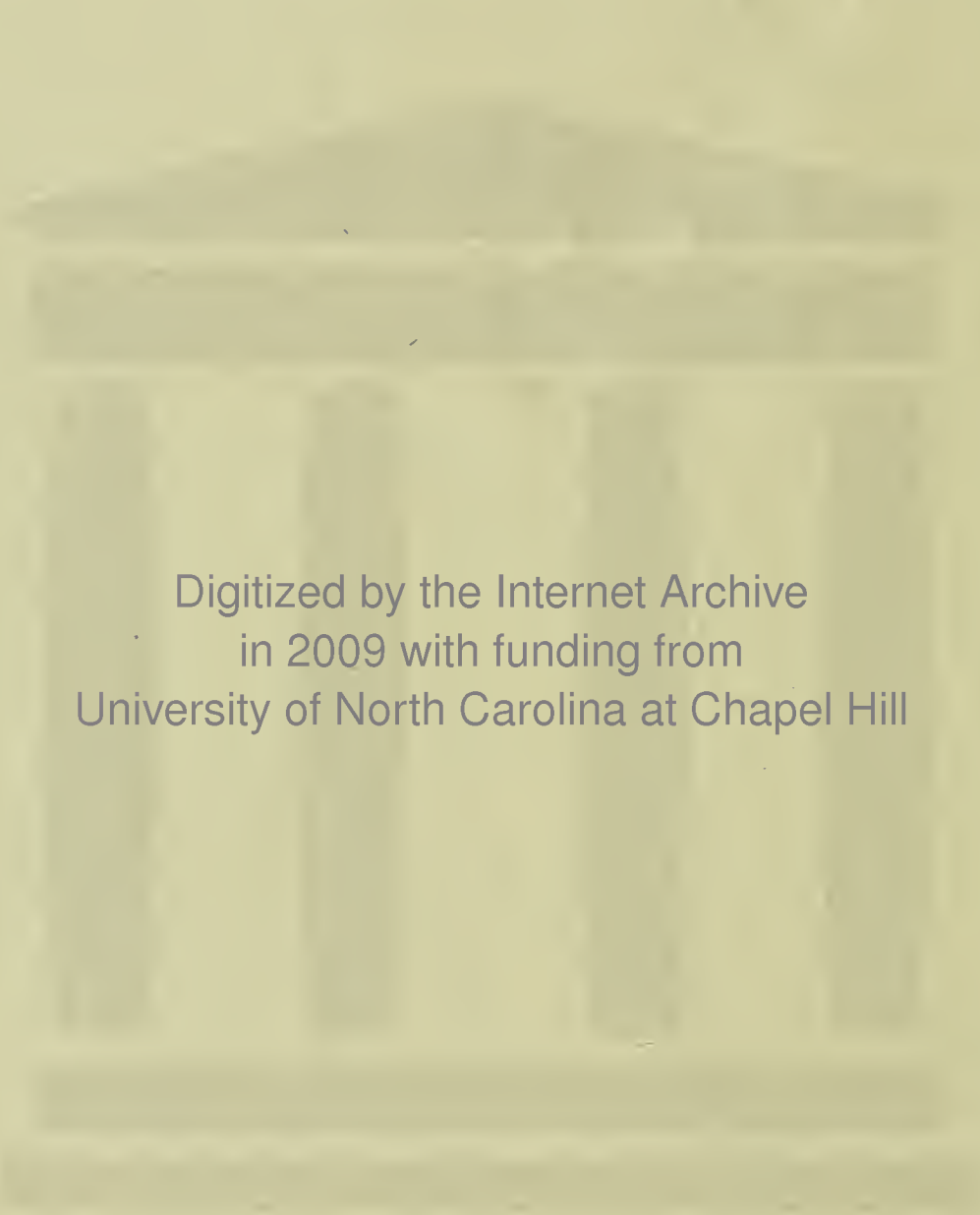




THE RHO. DO. DEN. DRON.

*he*

• RHO. •  
• DO. •  
• DEN. •  
• DRON. •



Digitized by the Internet Archive  
in 2009 with funding from  
University of North Carolina at Chapel Hill

Donated by Mr. Julian Yoder  
August 1987







EX LIBRIS

PRESENTING



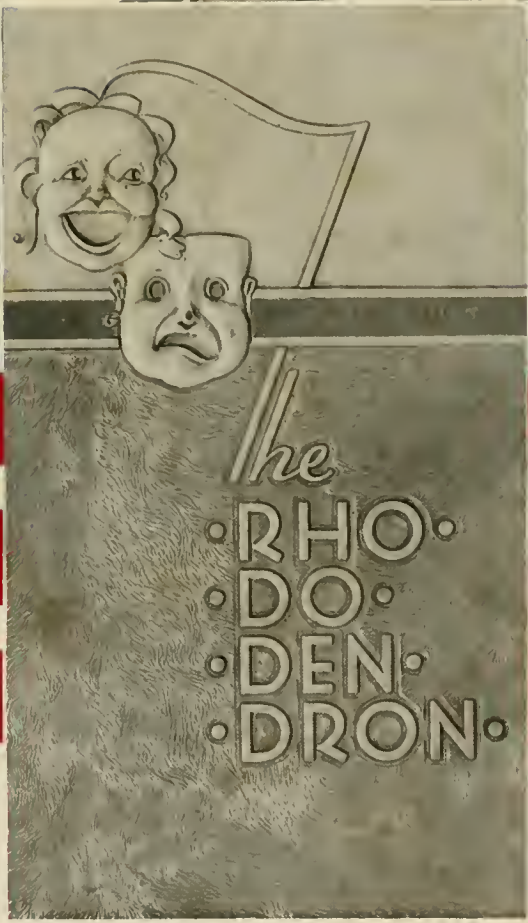
FOR THE SENIOR



CLASS OF

APPALACHIAN STATE

TEACHERS COLLEGE



1938 OF

BOONE

NORTH CAROLINA



WILLIAM AMOS ABRAMS

APPALACHIAN



# DEDICATION

To a man whose enthusiasm for teaching is so pronounced, whose influence on his fellows and students so infinite, and whose everlasting interests in the forwarding of Appalachian so great, is this, the sixteenth volume of *The Rhododendron*, dedicated.

In the years to come, Doctor Abrams, we hope that this book will serve as a pleasant reminder of our associations, and that in some measure it will show our appreciation of your services to us.

STATE TEACHERS COLLEGE

# F O R E W O R D

The drama of yesterday, the glorious literature of the past is ours today. We laugh, cry, love, hate, connive, and disparage with the actors. Their lines are ours.

Realizing the vastness of the dramatic field we considered it unwise to limit the scope to a particular author; rather, we have selected for our theme the most colorful dramatic period of each of five different countries; attempting to depict for you something of the type characters, their costumes and manners.

In the later years of your life we feel that you will finger these pages in solemn retrospect, and view with inexorable pride your role on this campus. Then, and only then, will the fullest meaning of this milestone in your life be revealed.

THE PAGEANT

# C O N T E N T S

BOOK I. The stage, its properties, plus the directors, gives evidence of dramatic activity. Fittingly, this book is the—COLLEGE.

BOOK II. Apprentices, script-holders, understudies, and artists—alpha and omega—all in this book—The CLASSES.

BOOK III. Fire, color, flash, blood, brawn, poise, tenacity and beauty epitomize our dramatic situation—ATHLETICS.

BOOK IV. Sidelines, opportunities, yes—and individual expression mark the potential actor. Pooled ideas develop new slants—in ACTIVITIES.

BOOK V. The cast honors its great—chooses loveliness and charm, laughs at life, and goes shopping—in FEATURES.

OF THE DRAMA + + + OF

# YESTERDAY AND TODAY

Copyright 1938

JACK H. GIBBS  
Editor

ROBERT N. ELLIOTT, JR.  
Business Manager

ENGLISH ELIZABETHAN







THE ADMINISTRATION BUILDING



THE CAFETERIA





THE LIBRARY





THE HOSPITAL



BLAU DOLF HALL



THE GIRLS GYMNASIUM





SNOW SCENE





THE BOYS GYMNASIUM



THE COLUMNS



WITCHES OF MACBETH

FACULTY



B. B. DOUGHERTY  
B.S., Ph.B., D.Litt.  
President





J. D. RANKIN, A.B., A.M., S.T.D.  
*Dean—English*

HERMAN R. EGGERS, A.B., A.M.  
*Education*

J. M. DODNUM, A.B.  
*Registrar*

CHAPPELL WILSON, A.B., A.M.  
*Director Demonstration Schools*

WILEY SMITH, A.B., M.A., Ph.D.  
*Psychology*

ZED H. BURNS, B.S., M.S., D.Ed.  
*Education*

VAN HINSON, A.B., M.Ed.  
*Education*

E. S. CHRISTENBURY, A.B., M.A.  
*Principal—High School*

JOHN HOWELL, B.S.  
*Principal—Elementary School*

MISS CAROLYN WEAVER, B.S., M.A.  
*Primary Education*

MISS JENNIE TODD, B. S.  
*Supervisor of Women—Penmanship*

MRS. LILLIE B. HARDIN  
*Matron*

MRS. VIOLA ODELL  
*Matron*



W. AMOS ABRAMS, A.B., A.M., Ph D  
*English*

MISS META LILES, A B., M.A.  
*English*

GRAYDON P. EGGERS, A.B., M.A.  
*English*

A. J. GREEN  
*English*

S. PHILIP COLEHOUR, A.B., A.M.  
*English*

HOMER K. COMPTON, B.M.  
*Voice*

MISS VIRGINIA WARY, B.M.  
*Music*

MISS KATHARINE HARWELL, B.S.  
*Art*

MRS. VAN HINSON, A.B., A.M.  
*French*

MRS. EMMA H. MOORE  
*Librarian*

LEONARD EURY, A B., B.S. in L.S.  
*Librarian*

MISS ALLIE AUSTIN, B.S.  
*Librarian*

MISS LOUISE MOORE  
*Library Science*



D. J. WHITENER, A.B., A.M., Ph.D.  
*History and Government*

J. HAROLD WOLFE, A.B., A.M., Ph.D.  
*History and Sociology*

W. M. GRUBBS, B.A., M.A.,  
*Economics and Government*

VANCE HOWELL, B.A., A.M.  
*History*

J. A. WILLIAMS, A.B., A.M.  
*Geography*

JULIAN C. YODER, B.S.  
*Geography*

F. E. WARMAN, B.S., A.M., B.D., D.D.  
*History*

G. L. SAWYER, A.B., A.M.  
*History*

ANTONIOS ANTONAKOS, B.S., M.S.  
*Physics*

MISS MAUDE CATHCART, B.S., A.M.  
*Biology*

MISS IDA BELLE LEDBETTER, A.B., A.M.  
*Biology*

MRS. VIRGINIA DARE STROTHER, B.S.  
*Biology*

A. R. SMITH, A.B., A.M.  
*Chemistry*





J. T. C. WRIGHT, A.B., A.M.  
*Mathematics*

STARR N. STACY, B.S.  
*Mathematics*

MISS LILY DALE, B.S., A.M.  
*Home Economics*

MISS AGNES PATRICK, B.S.  
*Dietitian*

BARNARD DOUGHERTY, B.S.  
*Business Manager*

PIERCE O. BREWER, A.B.  
*Athletic Director*

FLUCIE STEWART, A.B.  
*Assistant Athletic Director*

EUGENE GARBEF, B.S., M.A.  
*Physical Education*

R. W. WATKINS, A.B., M.A.  
*Physical Education*

MRS. WILLIAM M. MATHESON, B.S., M.A.  
*Physical Education*

MISS THURSA STEED, B.S., M.A.  
*Physical Education*

MRS. D. C. REDMOND  
*Secretary to Registrar*

MISS MARY WILLIAMS, B.S.  
*Secretary to Business Manager*



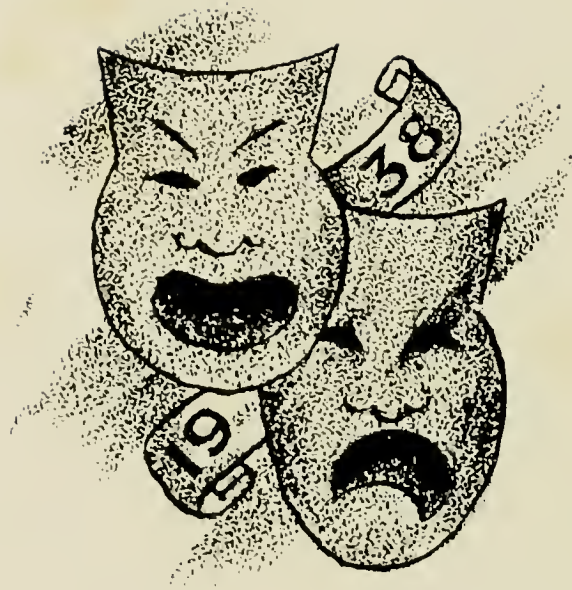
# THE DOCTOR IN SPITE OF HIMSELF

MARTINE. You will find him there, chopping  
and making faggots for amusement.  
JUCAS. A physician chopping wood!  
ALÈRE. Impe  
ART



an  
-a  
in  
bo  
r  
us  
s;  
will  
eat him

Quite true, but when he has finally  
he does wonderful things.  
What's his name?  
Sganarelle. He's  
wears





MARTINE

# SENIORS



DWAYNE THOMPSON  
*President*



LUCY LITTLE  
*Vice-President*



NELL MCSWAIN  
*Secretary*



RAY CLINE  
*Treasurer*



ETTA LUCILLE ALLEY  
CATAWBA, N. C.

*Grammar Grade Education*

Dynician Literary Society (1, 2, 3, 4);  
White Hall Club (1, 2, 3, 4); Lutheran  
Club (1, 2, 3, 4), Secretary (3); Y. W. C.  
A. (2, 4); Playcrafters (1, 4); Catawba  
County Club (1).

SALLIE GREEN ALLISON  
HORSE SHOE, N. C.

*Grammar Grade Education*

Weaver College (1, 2); Dynician Literary  
Society (3, 4), Censor (3); Y. W. C. A.  
(3, 4); Junior Marshal (3); Rutherford-  
Cleveland County Club (3); Junior Minis-  
terial Alliance (4); Methodist Club (4).

DIXIE ALLRED

HAMPTONVILLE, N. C.

*Grammar Grade Education*

Thalian Literary Society (4); New Dormi-  
tory Club (4); Pfeiffer College (1, 2);  
E. C. T. C. (3).



ROVIE JONES ANGELL  
HARMONY, N. C.

*Physical Education and History*

Football (1, 2, 3, 4), Captain (4); Basket-  
ball (1, 2, 3), Co-Captain (3); "A" Club  
(1, 2, 3, 4); Alpha Sigma Gamma (1, 2);  
Track (1, 2); Physical Education Major  
Club (1, 2, 3, 4).

# SENIORS

GRANT DALE ASHLEY  
BOONE, N. C.

*Science and History*

Biology Laboratory Assistant (4).





MARY KATHLEEN ANDERSON

PINEY CREEK, N. C.

*French and English*

Playcrafters (1, 2, 3, 4); Phila Retian Literary Society (1, 2, 3, 4); Creative English Club (3, 4); Le Cercle Français (3, 4); Young Women's Missionary Circle (2, 3); Forensic Club (4), Treasurer (4).



SELMA WILSON ANDERSON

TARBORO, N. C.

*Primary Education*

Glee Club (3).

SARA LEIGH ARMFIELD

WINSTON-SALEM, N. C.

*Grammar Grade Education*

Thalian Literary Society (2, 3, 4), Pianist (3); Orchestra (2, 3, 4); Trio (2, 3, 4); Y. W. C. A. (2), Junior Cabinet (2); White Hall Club (2, 4), Chairman Program (4); New Dormitory Club (3); Playcrafters (3).

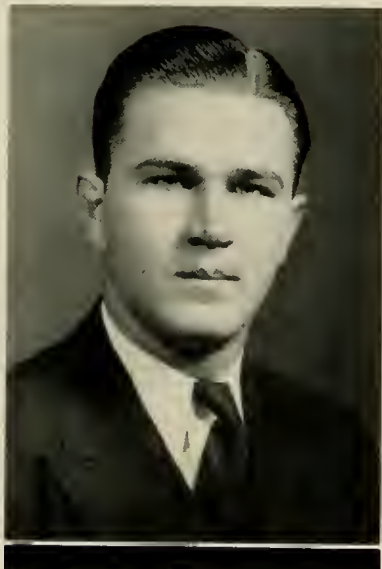


JEAN BASS

MARSHVILLE, N. C.

*Physical Education and French*

Wingate College (1, 2); Phila Retian Literary Society (3, 4), Secretary (4); Physical Education Major Club (3, 4); New Dormitory Club (3, 4); Le Cercle Français (3, 4); Basketball (3, 4); Y. W. C. A. (3, 4), Marshal (3).



NINETEEN THIRTY EIGHT

HENRY ALFRED BEST

BESSEMER CITY, N. C.

*History and English*

Scout Troop (3); Delta Phi Sigma (1, 2); Gaston County Club (3, 4), President (4); Playcrafters (4); History Major Club (4).



VIRGINIA FRANCIS BEAM  
CHERRYVILLE, N. C.

*English and French*

Phila Retian Literary Society (1, 2, 3, 4), President (4), Chorister (3); Playerafter (3, 4); "D. R. V." (3); Home Economics Club (3, 4), Secretary (3), Critic (4), Reporter (4); Le Cercle Français (2, 3, 4), Secretary (3); Gaston County Club (3, 4), Vice-President (3); Lovill Club (1); New Dormitory Club (2, 3, 4).

RUTH CAROLE BEASLEY  
PILOT MOUNTAIN, N. C.

*Physical Education and History*

Basketball (1, 2, 3, 4); Intra-Mural Athletics (1, 2, 3, 4); Dyncian Literary Society (1, 2, 3, 4); New Dormitory Club (2, 3, 4); White Hall Club (1); Physical Education Major Club (1, 2, 3, 4), Vice-President (2); Girls "A" Club (1, 2, 3, 4); Social Science Club (4); Y. W. C. A. (1, 2, 4).

RUTH DARE BEAVER  
BEAR POPLAR, N. C.

*Primary Education*

Phila Retian Literary Society (1, 2, 3, 4), Critic (2), Secretary (3); White Hall Club (1); New Dormitory Club (2, 3, 4); Home Economics Club (3, 4), Secretary (4), Vice-President (4); L. S. A. (1, 2, 3, 4); Y. W. C. A. (1, 2, 3, 4); Honorary Hockey Team (1, 2); Playerafters (1, 2, 3, 4); Rowan County Club (1).



ROSCOE VERNE BUCKLAND  
COVINGTON, VA.

*History and Science*

Berea College (1); Alderson-Broddons (2); Alpha Lambda Sigma (3, 4), President (3); International Relations Club (4); National Economics Club (4); Y. M. C. A. (3, 4), Secretary and Treasurer (3), President (4); Junior Ministerial Alliance (3, 4), President (4); Scouters Training Corps (3, 4), Assistant Scout Master (3), Neighborhood Commissioner (4); Social Science Club (4); Creative English Club (3, 4).



SENIORS

THOMAS RAY CLINE  
LINCOLNTON, N. C.

*Grammar Grade Education*

Alpha Lambda Sigma (1, 2, 3, 4), Vice-President (3), President (4); Lincoln County Club (1, 2); Tennis Manager (3, 4); Circulation Manager *The Appalachian* (4).

EDNA BEATRICE BINGHAM  
BOONE, N. C.

*Physical Education and Mathematics*

Physical Education Major Club (1, 2, 3, 4); Ministerial Alliance (4); Methodist Club (1, 2, 3, 4); Methodist Junior Choir (1, 2, 3, 4).

LELIA EVELYN BLACKWELL  
RUFFIN, N. C.

*Grammar Grade Education*

Phila Retian Literary Society (1, 2, 4); Methodist Club (1, 2); Y. W. C. A. (1, 2); Playcrafters (1, 2, 4).

GLADYS ELIZABETH BLAKELEY  
CORNELIUS, N. C.

*Grammar Grade Education*

Vernician Literary Society (1, 2, 3, 4); Corresponding Secretary (3); Secretary (2); Lovill Club (1, 2); New Dormitory Club (3, 4); Methodist Club (1, 2); Y. W. C. A. (1, 2).

MYRLE GILMERE BOLICK  
LENOIR, N. C.

*Primary Education*

Rutherford College (1); White Hall Club (2); New Dormitory Club (3, 4); Phila Retian Literary Society (4); Junior Ministerial Alliance (4).



NINETEEN THIRTY EIGHT

ROGER COLLINS  
WAXHAW, N. C.

*French and English*

Wingate College (1, 2).







MARY ANNE BOST  
STATESVILLE, N. C.

*English and French*

Mitchell College (1, 2); Le Cercle Fran-  
cais (3); Creative English Club (3, 4);  
Vernician Literary Society (4), Censor (4);  
English Major Club (3, 4); Playcrafters  
(4); Lovill Club (3, 4).

EUPHA BOWMAN  
TAYLORSVILLE, N. C.

*Physical Education and History*

Thalian Literary Society (1, 2, 3, 4);  
Y. W. C. A. (3, 4); Playcrafters (3);  
Physical Education Major Club (1, 2, 3,  
4); White Hall Club (1); New Dormitory  
Club (2, 3, 4); B. S. U. (1, 2, 3, 4); Stu-  
dent Volunteer (2, 4); History Major Club  
(4).



MILDRED ELOISE BOYCE  
ANSONVILLE, N. C.

*English and French*

Lees-McRae College (1, 2); Debating  
Team (1, 2); Christian Association (1, 2);  
Phi Rho Pi (2); French Club (1, 2), Presi-  
dent (2); Dynician Literary Society (3, 4).

RAY WOOD COON  
LINCOLNTON, N. C.

*Science and History*

Alpha Lambda Sigma (1, 2, 3, 4), Secre-  
tary (4); Lincoln County Club (1, 2);  
*Appalachian* Staff (3, 4), Assistant Circu-  
lation Manager (3), Business Manager *The  
Appalachian* (4).

# SENIORS

DANIEL WADE CRANFORD  
ALBEMARLE, N. C.

*Physical Education and English*

The Citadel (1); Wrestling (2, 3, 4);  
Track (2, 4); Intramural Sports (2, 3, 4);  
Delta Phi Sigma (2); "A" Club (3, 4);  
Y. M. C. A. (2).





NETA BRIDGES  
MOORESBORO, N. C.

*Grammar Grade Education*

Dynician Literary Society (1, 2, 3, 4),  
Critic (4); Playcrafters (4); Junior Ministerial Alliance (4); Y. W. C. A. (2, 3, 4);  
Lovill Club (1, 2, 3, 4), Secretary (3);  
B. T. U. (1, 2, 3, 4).

BEULAH MAY BRYANT  
CUMBERLAND, VA.

*Science and English*

Thalian Literary Society (1, 2, 3, 4);  
Playcrafters (3, 4); Lovill Club (1, 2);  
New Dormitory Club (3, 4); Y. W. C. A.  
(4).

ELOISE BRYANT  
YADKINVILLE, N. C.

*Primary Education*

Pfeiffer College (1, 2); Lovill Club (3,  
4); B. Y. P. U. (3, 4); Dynician Literary  
Society (4).

CORA PAULINE BUNCH  
NEW LONDON, N. C.

*Grammar Grade Education*

White Hall Club (1, 2); Home Economics  
Club (2, 3, 4), President (4); Thalian Literary  
Society (1, 2, 3, 4), Secretary (4);  
New Dormitory Club (3, 4); Y. W. C. A.  
(1, 2, 3, 4); May Court (2), Maid of Honor  
(2); B. Y. P. U. (3, 4).



NINETEEN THIRTY EIGHT

ROBERT PAGE EDWARDS  
SPARTA, N. C.

*French, History and English*

E. C. T. C. (1); Science Club (1); Alpha  
Sigma Gamma (2, 3, 4), Vice-President (4);  
Le Cercle Français (2, 3, 4), Vice-Presi-  
dent (4); Y. M. C. A. (2, 3, 4), Secretary  
and Treasurer (4); History Club (1); Ex-  
temporaneous Club (4).



ANNIE LAURIE BURTON  
RIDGEVILLE, N. C.  
*Grammar Grade Education*

Lees-McRae College (1, 2); Intramural Basketball (3); Thalian Literary Society (4); White Hall Club (4); Presbyterian Club (4).

STELLA MAY CAIN  
SHARON, S. C.  
*Grammar Grade Education*  
B. Y. P. U. (1, 2).

VIRGINIA CLAY  
BOONE, N. C.  
*History and English*



ROBERT NEAL ELLIOTT, JR.  
CHARLOTTE, N. C.  
*English and History*

Rhododendron Staff (1, 2, 3, 4); Business Manager (4); Band (1, 2, 3, 4); Orchestra (1, 2, 3, 4); Alpha Lambda Sigma (1, 2); Playcrafters (4); *Playbill* Staff (4); Glee Club (3); Cara Lomes (1, 2, 3, 4).

# SENIORS

HAL BUCKNER FARTHING  
SUGAR GROVE, N. C.  
*History and Physical Education*

Football (1, 2, 3, 4); "A" Club (3, 4); Wrestling Manager (2, 3); International Relations Club (3, 4); *Appalachian* Staff (3, 4); Editor-in-Chief (4); Alpha Sigma Gamma (1).



MAY MUNDY CLIFTON  
NEWTON, N. C.

*Grammar Grade Education*

A.B. Greensboro College; Honorary Mem-  
ber RHODODENDRON Staff.



MARY ELIZABETH COOKE  
BOONE, N. C.

*Grammar Grade Education*

Dynician Literary Society (1, 2, 3, 4).



WILLIE GENEVA COOKE  
BOONE, N. C.

*Grammar Grade Education*

JOHNSIE MARIE CORNELL  
VILAS, N. C.

*Primary Education*

Lees-McRae College (1, 2).



---

NINETEEN THIRTY EIGHT

---

JOSEPH CALVIN FOLGER  
MOUNT AIRY, N. C.

*History and English*

Y. M. C. A. (1); English Major Club (4).



NELL CURTIS  
MARION, N. C.

*Primary Education*

Dynician Literary Society (1, 2, 3, 4),  
Vice-President (1), Critic (2); Methodist  
Club (2, 4); White Hall Club (1); New  
Dormitory Club (2, 3, 4), Secretary (2);  
Playcrafters (2, 4); Y. W. C. A. (2, 4).

IRENE DICKSON

GRASSY CREEK, N. C.

*English, French and History*

Playcrafters (2, 3); Thalian Literary So-  
ciety (2, 3), Corresponding Secretary (3),  
Chaplain (3).



LOTTIE LORENE DICKSON

HELTON, N. C.

*English and History*

WILLIAM BLAINE GIBBS, JR.

APPALACHIA, VA.

*History and Science*

Alpha Lambda Sigma (1, 2); Cara Lomes  
(1, 2, 3, 4); Symphony (1, 2, 3, 4); Band  
(1, 2, 3, 4); Glee Club (4); RHODODENDRON  
Staff (4); Business Manager *The Playbill*  
(4).



# SENIORS

JACK HOWARD GIBBS

APPALACHIA, VA.

*English and History*

Alpha Lambda Sigma (1, 2); Band (1, 2,  
3, 4); Orchestra (1, 2, 3, 4), President  
(3); Glee Club (1, 2, 3, 4); Playcrafters  
(1, 2, 3, 4); Trio (3, 4); International Re-  
lations Club (2, 3, 4), Treasurer (4);  
RHODODENDRON Staff (2, 3, 4), Editor-in-  
Chief (4).



ANNIE MAURICE DOBBINS  
 RUSK, N. C.

*French and Mathematics*

Y. W. C. A. (1, 2, 3, 4);  
 Dyncian Literary Society (1, 2, 3, 4);  
 Le Cercle Français (2, 3, 4); Y. W. C. A.  
 (4); Playcrafters (4); Methodist Club (3,  
 4).

RUTH JUILETTA EPPS  
 NEWTON, N. C.

*French and English*

Y. W. C. A. (1, 2, 3, 4), Cabinet (2, 3);  
 Thalian Literary Society (1, 2, 3, 4), Vice-  
 President (3); Playcrafters (1, 2, 3, 4);  
 International Relations Club (3, 4), Secre-  
 tary (4); Glee Club (1, 2, 3, 4), Pianist  
 (2, 3, 4); Methodist Club (1, 2, 3, 4); Le  
 Cercle Français (2, 3, 4); "D. R. V."  
 (3); *Appalachian Staff* (4).

RUTH EARLINE ERVIN  
 STATESVILLE, N. C.

*English and History*

Mitchell College (1, 2); Vernician Lit-  
 erary Society (3, 4), Vice-President (4);  
 Presbyterian Club (3, 4), President (4);  
 Y. W. C. A. (3, 4); Lovill Club (3); His-  
 tory Major Club (4); New Dormitory Club  
 (4); Playcrafters (4).

MARTHA ELIZABETH FURCHES  
 FARMINGTON, N. C.

*Science and Physical Education*

Dyncian Literary Society (1, 2, 3, 4),  
 Pianist (1, 2, 3), Chorister (4), Vice-Presi-  
 dent (3); Lovill Club (1, 2); New Dormi-  
 tory Club (3, 4); Playcrafters (3, 4); Y.  
 W. C. A. (1, 2, 3, 4); B. S. U. (1, 2, 3,  
 4); B. T. U. (1, 2, 3, 4); Physical Edu-  
 cation Major Club (1, 2, 3, 4), President  
 (4); Letter Club (3, 4); Assistant Basket-  
 ball Manager (2), Manager (3, 4).



NINETEEN THIRTY EIGHT

ANDREW JOSEPH GILLESPIE, JR.  
 SALISBURY, N. C.

*History and English*

Delta Phi Sigma (2, 3, 4); Debating (4);  
 "A" Club (4); Senior Football Manager  
 (4); Senior Basketball Manager (4); Y. M.  
 C. A. (2); Rowan County Club (2), Presi-  
 dent (2); History Club (4).



IRMA GREY GABRIEL  
SHERRILL'S FORD, N. C.

*Primary Education*

Dynceian Literary Society (1, 2, 3, 4),  
Censor (3), Treasurer (3), Secretary (4);  
White Hall Club (1); Methodist Club (2,  
3, 4); New Dormitory Club (2, 3, 4);  
Basketball (2, 3); Y. W. C. A. (2, 3, 4);  
Catawba County Club (2).

EDITH CARRIE GLENN  
SPRUCI, PINE, N. C.

*Primary Education*

Lees-McRae College (1, 2).



GERTRUDE T. GRAYBEAL  
CRESTON, N. C.

*French and History*

Le Cercle Français (2, 3, 4); Vernician  
Literary Society (2, 3, 4), Chaplain (4);  
Lovell Club (1, 2, 3, 4); Ashe County Club  
(1, 2, 3, 4); B. Y. P. U. (3, 4); Junior  
Ministerial Alliance (4).

HARLON FRED GILLIAM  
NORTH WILKESBORO, N. C.

*History and Physical Education*

Alpha Sigma Gamma (1, 2, 3, 4), Vice-  
President (2), President (3); Playcrafters  
(2, 3, 4); Extemporaneous Club (4); Y.  
M. C. A. (4); Social Science Club (4),  
Vice-President (4).

SENIORS

WILLIAM GOOD  
NEW FLORENCE, PA.

*History and French*

Shenandoah College (1); Alpha Sigma  
Gamma (2, 3, 4); Track (2); Boxing (2,  
3, 4); Tennis (3); Le Cercle Français (3,  
4); Playcrafters (4); *Appalachian* Staff (4);  
Social Science Club (4); Baseball (4).



SUSIE GROSE  
HARMONY, N. C.  
*Grammar Grade Education*



SARAH JULIA HALL  
SALISBURY, N. C.  
*Primary Education*

Phila Retian Literary Society (2, 3, 4);  
Lovill Club (2, 3), Secretary and Treasurer  
(4); Presbyterian Club (2, 3, 4); Play-  
crafters (4).

MRS. FRANK HAMRICK  
BOONE, N. C.  
*Grammar Grade Education*



MATTIE LOU HARMON  
SHERWOOD, N. C.  
*Grammar Grade Education*



---

NINETEEN THIRTY EIGHT

---

WILLIAM HOWARD GOODMAN  
TODD, N. C.

*English and History*

Glee Club (2, 3, 4), President (4); Alpha  
Sigma Gamma (1, 2, 3, 4), Chorister (2),  
Secretary (3), President (4); Ashe County  
Club (2, 3, 4), President (2); Cheer Leader  
(4); Playcrafters (4); Y. M. C. A. (2, 3),  
Chorister (2, 3); Le Cercle Francais (2).



MRS. MAY TINDALL HARRISON  
BOONE, N. C.

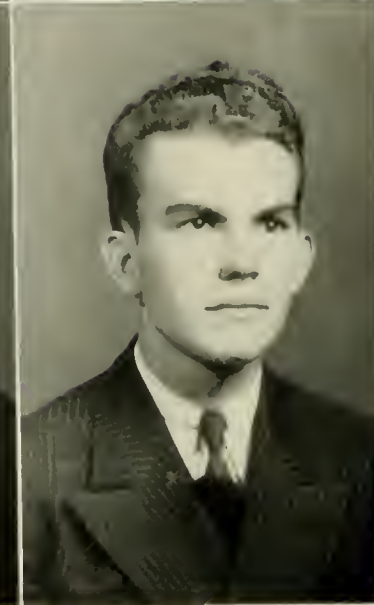
*French and History*

Lander College (1, 2); East Tennessee  
Teacher's College (3); Le Cercle Francais  
(4).

VIRGINIA LUCILLE HARTLEY  
BOONE, N. C.

*English and French*

Mars Hill College (1, 2); Playcrafters  
(3, 4); President (4); B. S. U. (3, 4); Presi-  
dent (4); Y. W. C. A. (3, 4); Cabinet (4);  
Phila Retian Literary Society (3, 4);  
Chorus'er (3); Treasurer (4); Orator (3);  
Glee Club (3, 4); Treasurer (4); New  
Dormitory Club (3, 4).



ROSALYN LORENE HARTSELL  
CONCORD, N. C.

*Primary Education*

Y. W. C. A. (1, 4); Dyncian Literary  
Society (1, 2, 3, 4); Methodist Club (1, 2,  
4); White Hall Club (1, 2, 3); New  
Dormitory Club (4).

THOMAS GREENE  
BOONE, N. C.

*Mathematics and Science*

# SENIORS

JAMES CONNOR HAWKINS  
THOMASVILLE, N. C.

*Mathematics and History*

Football (2, 3, 4); Glee Club (2, 3, 4);  
"A" Club (3, 4).





MRS. LENA HEAVNER  
CROUSE, N. C.  
*Grammar Grade Education*



INEZ HENDERSON  
SHULLS MILLS, N. C.  
*Grammar Grade Education*  
Watauga County Club (1, 2, 3, 4).

EVELYN E. HENSON  
CAROLEEN, N. C.  
*Grammar Grade Education*



Asheville Teachers College (1, 2, 3); In-  
tramural Program (1, 2, 3); Athletic Asso-  
ciation (1, 2, 3); Nature Club (1, 2, 3);  
Secretary (2), President (3); Religious  
Education Club (3); Y. W. C. A. (1, 2,  
3); Dyncian Literary Society (4).

KATE HENSON  
SHERWOOD, N. C.  
*Primary Education*  
Watauga County Club (1, 2, 3, 4).




---

NINETEEN THIRTY EIGHT

---

EARL WILLIAM HENSON  
VILAS, N. C.  
*History and Physical Education*

Football (1, 2, 3, 4); Baseball (1, 2);  
Basketball (1, 2, 3), Co-Captain (3); "A"  
Club (2, 3, 4); Track (1); Soccer (1).



DOROTHY HERMAN

NEWTON, N. C.

*Primary Education*

Thalian Literary Society (1, 2, 3, 4);  
Playcrafters (1, 2, 3, 4), Secretary and  
Treasurer (4); "D. R. V." (3); Catawba  
County Club (1, 2); Home Economics Club  
(1, 2); Lovill Club (1, 2); New Dormitory  
Club (3, 4); Y. W. C. A. (1, 2, 3, 4).

VIRGINIA LOVE HOLLAND

WINSTON-SALEM, N. C.

*Grammar Grade Education*

Y. W. C. A. (1, 2, 3, 4), Cabinet (2, 3);  
Thalian Literary Society (1, 2, 3, 4).  
President (4); White Hall Club (1, 2); New  
Dormitory Club (3, 4); Methodist Club  
(1, 2, 3, 4), President (4); Home Economics  
Club (4), Secretary (4); Playcrafters (2,  
4).



HELEN DAPHNE HOLT

JULIAN, N. C.

*English and French*

Le Cerele Francais (1, 2, 3, 4); Lovill  
Club (2, 3, 4), Secretary and Treasurer  
(2); Vernician Literary Society (2, 3, 4),  
Treasurer (2), President (3), Secretary (4).

WADE WOODROW LACKEY

HIDDENITE, N. C.

*History and Physical Education*

B. Y. P. U. (2, 3); Intramural Athletics  
(2, 3, 4); Baseball (2); Delta Phi Sigma  
(1).

# SENIORS

CHARLES EDWARD LOVE

SUGAR GROVE, N. C.

*History and English*

International Relations Club (3, 4);  
National Economics Club (2, 3, 4); Delta  
Phi Sigma (2, 3, 4); Y. M. C. A. (3, 4);  
Baseball (1, 2); Intramural Athletics (1,  
2, 3, 4).



MARY ALICE HOPKINS  
 CONCORD, N. C.  
*Grammar Grade Education*



CAROLYN HUDSON  
 CONNELLY SPRINGS, N. C.  
*Primary Education*

Rutherford College (1, 2); Y. W. C. A. (3, 4); Dynician Literary Society (3, 4); New Dormitory Club (4).

FLORENCE ELIZABETH HUGHES  
 NEWLAND, N. C.  
*Grammar Grade Education*

Dynician Literary Society (1, 2, 3, 4); Censor (3); Presbyterian Club (1); Methodist Club (2, 3, 4); Home Economics Club (1); Secretary (1); Y. W. C. A. (1, 2, 3, 4); Junior Cabinet Member (1); Attendant to May Queen (1); White Hall Club (1); New Dormitory Club (2, 3, 4); Class Secretary (2).



SARAH LUCY JARRETT  
 HIGH POINT, N. C.  
*Primary Education*

Guilford College (1, 2); Y. W. C. A. (4); Phila Retian Literary Society (4); Methodist Club (4); New Dormitory Club (4).

---

NINETEEN THIRTY EIGHT

---

JOHN MARTIN MATHEWS  
 SANFORD, N. C.

*History and Physical Education*

Football (1, 2, 4); Band (1); Glee Club (1, 2).





LOUISE ELIZABETH JOHNSON  
HUDSON, N. C.

*Primary Education*

Rutherford College (1); White Hall Club (2); New Dormitory Club (3, 4); Phila Retian Literary Society (2, 3, 4), Chaplain (4); Junior Ministerial Alliance (4); Playcrafters (4); Y. W. C. A. (2, 3, 4); B. S. U. Council (4), Secretary (4); B. T. U. (2, 3, 4), Secretary (3), Devotional Leader (4); Student Volunteer (2, 3).

LOUISE JONES  
SHELBY, N. C.

*Primary Education*

Dyniclan Literary Society (1, 2, 3, 4); Methodist Club (1, 4); Y. W. C. A. (1, 2, 4); Playcrafters (4); Home Economics Club (3); New Dormitory Club (2, 3, 4); White Hall Club (1).

NINA ALMA JONES  
WILKESBORO, N. C.

*Primary Education*

Phila Retian Literary Society (1, 2, 3, 4); Home Economics Club (4), Treasurer (4); Lovell Club (1); New Dormitory Club (2, 3, 4).



HOWARD T. MCCANN  
ROARING GAP, N. C.

*Mathematics and Physical Education*

Football (1, 2, 3); Baseball (1, 2); "A" Club (2, 3); Alpha Lambda Sigma (1, 2, 3, 4).



RUSSELL MCCOLLUM  
MONROE, N. C.

*History and Mathematics*

SENIORS



MARGARET E. LACKEY

LENOIR, N. C.

*Primary and Grammar Grade Education*

Mitchell College (1, 2); Phila Retian Literary Society (3, 4); Appalachian Forensic Club (3, 4); New Dormitory Club (4); Playcrafters (3, 4); Y. W. C. A. (3).

LUCY HAMILTON LITTLE

NEWTON, N. C.

*Primary Education*

Vice-President of Class (4); Y. W. C. A. Cabinet (1, 2, 3, 4); Playcrafters (1, 2, 3, 4); Glee Club (1, 2, 3, 4), President (3); Thalian Literary Society (1, 2, 3, 4), Secretary (2), President (3); Miss Appalachian (3); International Relations Club (3, 4), Secretary (4); Orchestra (1, 2, 3, 4), President (1); New Dormitory Club (3, 4); May Court (1); RHODODENDRON Staff (3, 4); Home Economics Club (1, 2); Methodist Club (1, 2, 3, 4), Secretary (3).

MARY JANE LOGAN

KINGS MOUNTAIN, N. C.

*Grammar Grade Education*

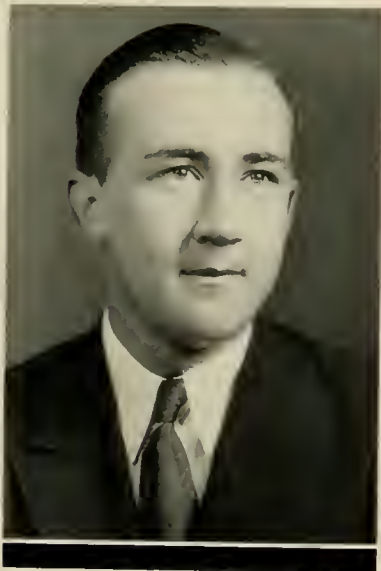
Phila Retian Literary Society (1, 2, 3, 4), President (4); Lovill Club (1, 2, 3, 4), Vice-President (1); Y. W. C. A. (1, 2, 3, 4), Choir (1, 2, 3, 4); May Court (2), Maid of Honor (2); B. S. U. (1, 2); Intramural Athletics (1, 2); Playcrafters (2); Associate Editor of APPALACHIAN (Summer) (3).

MARTHA LEE LONG

FOREST CITY, N. C.

*Primary Education*

Methodist Club (4); White Hall Club (4); Thalian Literary Society (4); Asheville Normal (1, 2).



NINETEEN THIRTY EIGHT

GEORGE SPENCER McRORIE

RUTHERFORDTON, N. C.

*History and English*

Wake Forest College (1).



MARY ELIZABETH LUTTERLOH  
PITTSBORO, N. C.

*Primary Education*

Vernician Literary Society (1, 2, 4),  
President (4); Playcrafters (1, 2, 4); Y.  
W. C. A. (1, 2); Student Volunteer (2);  
Methodist Club (1, 2); White Hall Club  
(1, 2).

VIRGINIA REBECCA MABE  
WALNUT COVE, N. C.

*Grammar Grade Education*

Thalian Literary Society (1, 2, 3, 4); Y.  
W. C. A. (1); Lovill Club (1, 2); New  
Dominitory Club (3, 4); B. Y. P. U. (1, 2).



JAMES MARGARET MANN  
PITTSBORO, N. C.

*Primary Education*

Phila Retian Literary Society (2, 4);  
White Hall Club (4); Secretary (4); Metho-  
dist Club (4); East Carolina Club (4); Y.  
W. C. A. (2, 4).

BANNER ISOM MILLER  
BOONE, N. C.

*Mathematics and Science*

Delta Phi Sigma (1, 2, 3, 4); Assistant  
in Mathematics (3); Aquateers (2), Sec-  
retary (2); Extemporaneous Club (4).

SENIORS

DERMONT RICHMOND MOORE  
LENOIR, N. C.

*History and English*

Alpha Sigma Gamma Literary Society  
(1, 2, 3, 4), Chaplain (1), Critic (2); Y.  
M. C. A. (1); Intramural Athletics (1, 2,  
3, 4).



JENNIE NEEL MARTIN

STATESVILLE, N. C.

*History and English*

Mitchell College (1, 2); Intercollegiate Debating (3, 4); Appalachian Forensic Club (3, 4), President (4); Phila Retian Literary Society (4); Playcrafters (3, 4); International Relations Club (4); New Dormitory Club (4).



SARAH ANNETTE McCLURE

SHELBY, N. C.

*Primary Education*

White Hall Club (1, 2); New Dormitory Club (3, 4); Dyncian Literary Society (1, 2, 3, 4); B. Y. P. U. (3, 4).



EDNA LOUISE McMILLAN

OAK RIDGE, N. C.

*Grammar Grade Education*

Montreat College (1, 2); Playcrafters (4); Dyncian Literary Society (3, 4); Lovill Club (3); New Dormitory Club (4).

HELEN BELK McNEELY

WAXHAW, N. C.

*Grammar Grade Education*

Lovill Club (3, 4), President (3, 4); Vernician Literary Society (3, 4), Critic (4).



# NINETEEN THIRTY EIGHT

FREDERICK DANIEL MOORE

ANTWERP, N. Y.

*History and Physical Education*

Basketball (1); Band (1, 2, 3, 4), Director (1, 3); Orchestra (1, 2, 3, 4), Assistant Director (1, 2), Director (3); Cara Lomes Director (1, 2, 3, 4); Playcrafters (4); Class President (2); Physical Education Major Club (3, 4); History Major Club (4); RHODOENORON Staff (4).





NELL LOUISE MCSWAIN  
DALLAS, N. C.

*Mathematics, Science and English*

Class Secretary (4); Dyuician Literary Society (1, 2, 3, 4); Secretary (2), Vice-President (3), President (4); Playcrafters (3, 4); New Dormitory Club (2, 3, 4); Secretary (4); B. S. U. Council (3); Y. W. C. A. (3, 4); Senior Cabinet (4); *Appalachian Staff* (4); Roundabout Staff (4); National Economics Club (3, 4); Secretary and Treasurer (3), Vice-President (4); T. R. C. (4); May Day Attendant (4).

FAY MESSICK  
LENOIR, N. C.

*Grammar Grade Education*

Rutherford College (1, 2); Y. W. C. A. (4); White Hall Club (3); New Dormitory Club (4); Librarian (3); National Economics Club (4); Phila Retian Literary Society (3, 4); Program Chairman (4); Junior Ministerial Alliance (4); Sunday School Teacher (3); *Appalachian Staff* (3, 4); News Editor (4).



BETTY JANE MILLER  
HICKORY, N. C.

*Mathematics and History*

Lenor-Rhync College (1); L. S. A. (2); White Hall Club (2); New Dormitory Club (3, 4); Phila Retian Literary Society (2, 3, 4); Playcrafters (4).

WARREN BICKETT MORGAN  
MARSHVILLE, N. C.

*Mathematics and History*

Wingate College (1, 2); Gladstone Literary Society (1, 2); Mathematics Club (2); Y. M. C. A. (4).



# SENIORS

BERNARD C. MURDOCH  
CHARLOTTE, N. C.

*Mathematics and Science*

International Relations Club (2, 3, 4); Treasurer (3), Vice-President (4); Class President (3); National Economics Club (4); Extemporaneous Club (4); Delta Phi Sigma (1, 2, 3, 4); Secretary and Treasurer (2), Critic (2), Vice-President (3), President (4); Playcrafters (3, 4); Co-Editor *The Playbill* (4); Band (1, 2, 3, 4), Vice-President (3); Orchestra (1, 2, 3, 4); Tennis (1, 2); Aquateer (1, 2); Y. M. C. A. (3, 4); Chief Marshal (3).



ELIZABETH DAVIS MILLER  
MOCKSVILLE, N. C.

*Grammar Grade Education*

Dynician Literary Society (1, 2, 3, 4),  
Chaplain (4), Pianist (3); Methodist Club  
(1, 2, 3, 4), President (3); National  
Economics Club (3, 4); Y. W. C. A. (2,  
3, 4), Junior Cabinet Member (3, 4); New  
Dormitory Club (3, 4); Lovill Club (1);  
Playcrafters (3, 4).



EVELYN GERTRUDE MILLER  
RICHFIELD, N. C.

*French and English*

Pfeiffer Junior College (1, 2); Le Cercle  
Francais (3, 4); B. Y. P. U. (4); Play-  
crafters (4); Lovill Club (3, 4); Vernician  
Literary Society (4); Junior Ministerial  
Alliance (4).



GAYE MAYMIE MILLER  
BOONE, N. C.

*Mathematics and Science*

B. Y. P. U. (1), Secretary (2, 3), Presi-  
dent (4); Y. W. A. (of Boone) (1, 2, 3, 4),  
Secretary (2), Vice-President (3), President  
(4); Playcrafters (4).

LEXIE MILLER  
MOUNT MITCHELL, N. C.

*Grammar Grade Education*



NINETEEN THIRTY EIGHT

ALGERNON SIDNEY NEAL  
REIDSVILLE, N. C.

*Mathematics and Science*

Delta Phi Sigma (1, 2, 3, 4); Playcrafters  
(4); Assistant Circulation Manager *The  
Appalachian* (3); B. S. U. Council (4).



REBECCA ALLIEFAIR MILLER  
CRUMPLER, N. C.  
*Primary Education*

EULA ALICE MILLS  
MARSHVILLE, N. C.  
*Primary Education*  
Wingate College (1, 2).

MARY HELEN MODLIN  
LINCOLNTON, N. C.  
*Grammar Grade Education*

Dynician Literary Society (1, 2, 3, 4),  
Chorister (4); Methodist Club (1, 2, 3,  
4), Vice-President (4); National Economics  
Club (3, 4); Playcrafters (2, 4); Y. W.  
C. A. (4); New Dormitory Club (2, 4);  
Lincoln County Club (1); White Hall Club  
(1).

BENJAMIN THOMAS NORRIS  
HICKORY, N. C.

*Physical Education and History*

Wrestling (2, 3, 4); Alpha Lambda Sigma  
(2); "A" Club (2, 3, 4); Class Vice-Presi-  
dent (2); Scout Troop (3, 4); History  
Major Club (4); Intramural Athletics (2,  
3, 4).

# SENIORS

WILLIAM GORDON NORRIS  
HICKORY, N. C.

*Physical Education and History*

Alpha Lambda Sigma (2); "A" Club (2,  
3, 4); Wrestling Team (2, 3, 4), Captain  
(4); Football Squad (1, 2, 3).



ANNIE MAE MOORE  
COLLETTSVILLE, N. C.

*Grammar Grade Education*

Phila Retian Literary Society (1, 2, 3, 4); Excuse Committee (3); Chairman, Membership Committee (4); Lovill Club (1); White Hall Club (2, 3); New Dormitory Club (4); Junior Ministerial Alliance (4); National Economics Club (4).



EULALIA EUBANKS MOORE  
MONROE, N. C.

*Primary Education*

Wingate College (1, 2).

FAYE MOORE  
GRANITE FALLS, N. C.

*Primary Education*

Phila Retian Literary Society (1, 2, 3, 4); White Hall Club (1); New Dormitory Club (2, 3, 4); Methodist Club (1); Volley Ball (2).



ILA DEAL MORROW  
STONY POINT, N. C.

*Grammar Grade Education*

Thalian Literary Society (1, 2, 3); Playcrafters (4); Lovill Club (4); L. S. A. (4); Y. W. C. A. (1, 2, 3).



NINETEEN THIRTY EIGHT

JAMES LESTER PATTERSON  
SHELBY, N. C.

*Mathematics and Physical Education*

Varsity Wrestling (1, 2, 3, 4); Track and Field (2); Alpha Lambda Sigma (1, 2, 3, 4), Chaplain (3), Vice-President (2), Secretary and Treasurer (2); Y. M. C. A. (1, 2, 3, 4), Chaplain (2), President (4); Playcrafters (2, 3, 4); "A" Club (2, 3, 4); Intramural Sports (1, 2, 3, 4); Junior Ministerial Alliance (4).



MYRTLE MARIE NANCE

PEACHLAND, N. C.

*Primary Education*

Y. W. C. A. (1, 2, 3); Vernician Literary Society (1, 2, 3, 4), Corresponding Secretary (2), Recording Secretary (3), Vice-President (4); Methodist Club (1, 2, 3, 4); White Hall Club (1, 2); New Dormitory Club (3, 4); Playcrafters (2, 4); May Day Attendant (3).

VIRGINIA GRACE NELSON

PILOT MOUNTAIN, N. C.

*Grammar Grade Education*

Fredericksburg College (1); Dyncian Literary Society (2, 3, 4); Y. W. C. A. (3, 4); May Court (4), Attendant (4).

MYRTLE NORTON

STONY POINT, N. C.

*English and French*

Mitchell College (1, 2); Lovill Club (4), President (4); Vernician Society (4); Presbyterian Club (4); Le Cercle Francais (3, 4).

IVAN C. PEARSON

NORTH LAWRENCE, N. Y.

*History and Science*

Playcrafters (1, 2, 3, 4), Master Craftsman (4); Wrestling (1); Class Treasurer (2); History Major Club (4); Alpha Lambda Sigma (4), Vice-President (4); Rhonodendron Staff (4); Forensic Club (3, 4).



# SENIORS

ARTHUR LAFAYETTE PHARR

WILKESBORO, N. C.

*History and Mathematics*

Playcrafters (4); Editor-in-Chief *The Playbill* (4); Social Science Club (4); Lees-McRae College (1, 2); Delta Phi Sigma (4).



MARY ELIZABETH PALMER  
 NEW LONDON, N. C.  
*Primary Education*  
 Pfeiffer College (1, 2).



LOIS PEELER  
 GOLD HILL, N. C.  
*Grammar Grade Education*

Pfeiffer College (1, 2); Thalian Literary Society (3, 4); Methodist Club (3, 4), Chaplain (4); National Economics Club (4).

SARAH ELIZABETH PERKINS  
 CONNELLY SPRINGS, N. C.  
*Primary Education*

Rutherford College (1, 2); Dynician Literary Society (3, 4); New Dormitory Club (4); Methodist Club (4).



FLORA ELIZABETH PITTMAN  
 FAIRMONT, N. C.  
*Grammar Grade Education*

Asheville Teachers College (1, 2); Dynician Literary Society (3, 4); Lovill Club (3); New Dormitory Club (4); Playcrafters (4); East Carolina Club (3, 4).




---

NINETEEN THIRTY EIGHT

---

WILLIAM STEWART SCOTT  
 BOONE, N. C.  
*Grammar Grade Education*

Wrestling (1, 2, 3); "A" Club (2, 3, 4).



HAZEL EVELYN PLASTER

WINSTON-SALEM, N. C.

*Grammar Grade Education*

Cheerleader (1, 2, 3, 4); Thalian Literary Society (1, 2, 3, 4); Treasurer (3); Vice-President Class (1); Most Popular (2); Y. W. C. A. (1, 2, 3, 4); Physical Education Major Club (1); May Court (4); Maid of Honor (4); New Dormitory Club (3, 4).

MARGARET PAULINE POPE

LINWOOD, N. C.

*English and History*

Dyniclan Literary Society (1, 2, 3, 4); Playcrafters (2, 4); Y. W. C. A. (3); Lovill Club (1, 2); White Hall Club (3); New Dormitory Club (4); Davidson County Club (2, 3, 4); English Club (4).



THELMA POTEAT

MARION, N. C.

*Mathematics and English*

Lees-McRae College (1, 2); Maryville College (3); Playcrafters (4).

ELMER RAY SINCLAIR

NORWOOD, N. C.

*Mathematics and Science*

Delta Phi Sigma (1, 2, 3, 4); Playcrafters (4); B. S. U. Council (4).



# SENIORS

RALPH SINCLAIR

PEACHLAND, N. C.

*English and History*

Wingate College (1, 2); Varsity Tennis (3, 4); "A" Club (3, 4).

MARY LORENA PRATT  
WINSTON-SALEM, N. C.

*History and Mathematics*

Duke University (1); Methodist Club (2); Thalian Literary Society (2, 3, 4); White Hall Club (2).

EUNICE FORD QUINN  
GAFFNEY, S. C.

*Physical Education and English*

Thalian Literary Society (1, 2, 3, 4), Censor (4); Lovill Club (2), President (2); New Dormitory Club (4); Physical Education Major Club (1, 2, 3, 4); Intramural Athletics (1, 2, 3, 4); Basketball (2); Certified Basketball Official (4); Swimming Team (3); Red Cross Life Saver (3).

BERNICE IRENE RALEY  
BETHUNE, S. C.

*Physical Education and French*

North Greenville College (1); Physical Education Major Club (2, 3, 4); Lovill Club (2, 3, 4); Dyncian Literary Society (3, 4); B. Y. P. U. (3, 4); Le Cercle Francais (3, 4); Honorary Volley Ball Team (4); Honorary Hockey Team (4); Playcrafters (4).

MARGARET ELIZABETH RAY  
BOONE, N. C.

*History and English*

Playcrafters (1); English Major Club (4).



NINETEEN THIRTY EIGHT

ALONZO ERVIN SMART  
ELLENBORO, N. C.

*History and Physical Education*

University of North Carolina (1); Basketball (2, 3, 4), Captain (4); Baseball (2, 3, 4); Delta Phi Sigma (2, 3, 4), President (4); "A" Club (2, 3, 4), President (4); Extemporaneous Club (3, 4); Playcrafters (2, 3, 4); B. S. U. Council (2, 3), Secretary (3); B. Y. P. U. (2, 3); Social Science Club (4); Rutherford County Club (3).





MABEL ELIZABETH RHYNE

GASTONIA, N. C.

*Primary Education*

Phila Retian Literary Society (1, 2, 3, 4), Secretary (3), Faculty Representative (3), Vice-President (4); Home Economics Club (1, 3), Treasurer (1), Vice-President (3); Playcrafters (4); Y. W. C. A. (4); White Hall Club (1), Secretary (1); New Dormitory Club (2, 3, 4), President (4); Gaston County Club (3, 4), Vice-President (4).

FRANCES AILEEN ROBBINS

TRINITY, N. C.

*Grammar Grade Education*

Dynician Literary Society (1, 2, 3, 4); White Hall Club (1, 2, 3, 4); Methodist Club (1, 2, 4); Y. W. C. A. (1, 2, 4); Playcrafters (4).



BERNICE VIRGINIA ROBERSON

ROBERSONVILLE, N. C.

*Primary Education*

Atlantic Christian (1, 2).

ROBERT REYNOLDS SPRATT

CAROLEEN, N. C.

*English and History*

Boiling Springs Junior College (1, 2); Glee Club (4); Playcrafters (4); Band (3, 4); Orchestra (3, 4); Social Science Club (4).

SENIORS

ROSCOE STALEY

WILBAR, N. C.

*Grammar Grade Education*

Wilkes County Club (1, 2); Alpha Sigma Gamma Literary Society (1, 2, 3, 4), President (4).





MARJORIE DAWE ROGERS  
 ROBERSONVILLE, N. C.  
*Grammar Grade Education*  
 Atlantic Christian (1).



CARRIE EDITH RUDISILL  
 VALE, N. C.  
*Physical Education and Science*

Dynician Literary Society (1, 2, 3, 4),  
 Critic (2), Secretary (3); Lovill Club (1,  
 2); New Dormitory Club (3, 4); Y. W. C.  
 A. (2, 3, 4); Lutheran Student Association  
 (2, 3, 4); Physical Education Major Club  
 (1, 2, 3, 4); Intramural Athletics (1, 2, 3,  
 4); Basketball (1, 2, 3, 4), Captain (3, 4);  
 Certified Basketball Official (4); Swimming  
 Team (3, 4).

FAY SALE  
 DOVER, DEL.

*Grammar Grade Education*

Dynician Literary Society (1, 2, 3, 4),  
 Chaplain (4); Methodist Club (1, 2, 3, 4);  
 Playcrafters (2, 4); Y. W. C. A. (2, 4);  
 New Dormitory Club (2, 3, 4), Vice-Presi-  
 dent (4); National Economics Club (3, 4).



CHARLOTTE E. SASSER  
 MOUNT OLIVE, N. C.  
*Grammar Grade Education*

Campbell College (1); East Carolina  
 Teachers College (2); Science Club (1).




---

NINETEEN THIRTY EIGHT

---

W. THORNTON STALEY  
 WILBAR, N. C.  
*Grammar Grade Education*

A. S. T. C. (1); Lenoir-Rhyne, Catawba  
 (2); Alpha Sigma Gamma (4).



ELIZABETH M. SINCLAIR  
NORWOOD, N. C.

*Grammar Grade Education*

Dynician Literary Society (1, 2, 3, 4), Secretary and Treasurer (2, 3), President (4); White Hall Club (1, 2); New Dormitory Club (3, 4), President (4); Playcrafters (2, 3, 4); Y. W. C. A. (1, 2, 3, 4); May Court (3); B. T. U. (1, 2, 3, 4); RHODODENDRON Staff (4); Extemporaneous Club (4).

LOUISE EUGENIA SMITH  
MT. HOLLY, N. C.

*Grammar Grade Education*

Lees-McRae Junior College (1, 2); Y. W. C. A. (3, 4); Dynician Literary Society (3, 4); B. S. U. (3, 4); Gaston County Club (3, 4); New Dormitory Club (4); National Economics Club (4).

MAVIS TALMAGE SMITH  
LENOIR, N. C.

*Grammar Grade Education*

Playcrafters (1); Dynician Literary Society (1, 2, 3, 4), Vice-President (4); White Hall Club (1); New Dormitory Club (3, 4); *The Appalachian Staff* (3, 4).

JACOB BRENTON STINES  
MARS HILL, N. C.

*Physical Education and History*

Football (1, 2, 3, 4); Baseball (1, 2, 3, 4); Wrestling (1); Boxing (4); "A" Club (1, 2, 3, 4).



SENIORS

JOSEPH GWYN SUTHERLAND  
FIG, N. C.

*Mathematics and Science*

Alpha Lambda Sigma (2, 3, 4), Secretary and Treasurer (3), President (4); Y. M. C. A. (2, 3, 4), Secretary and Treasurer (3), Vice-President (4); Junior Ministerial Alliance (2, 3, 4), Vice-President (3); Playcrafters (4); National Economics (4); Ashe County Club (2, 3, 4), President (4), Secretary and Treasurer (3).

NANCY RUTH SMITH

JACKSON HILL, N. C.

*Primary Education*

Wake Forest Summer School; Davidson County Club (2, 3, 4), President (2); Lovill Club (2, 3, 4); B. Y. P. U. (2, 3); Vermilian Literary Society (4); Playcrafters (4).

VIRGINIA ELIZABETH SMITH

TROUTMAN, N. C.

*Grammar Grade Education*

Playcrafters (4); White Hall Club (1), Vice-President (1); New Dormitory Club (2, 4); Phila Retian Literary Society (1, 2, 4), Chorister (4), Censor (2); Y. W. C. A. (1, 2, 3, 4), Cabinet Member (2); May Court (2), May Day Attendant (2); Methodist Club (1, 2, 4); Home Economics Club (1, 2, 4), President (4).

MAUDE S. SPEAGLE

VALE, N. C.

*Primary Education*

Playcrafters (3); Dyncian Literary Society (3, 4); Basketball (3, 4).

CYNTHIA LOUISE STILES

BOONE, N. C.

*Physical Education and French*

Mitchell College (1, 2); Physical Education Major Club (3, 4); Y. W. C. A. (3, 4), Cabinet (4); Le Cercle Francais (3, 4), President (4); Playcrafters (3, 4); Orchestra (3, 4); Certified Basketball Official (4); Intramural Athletics (3, 4); Red Cross Life Saver (3).

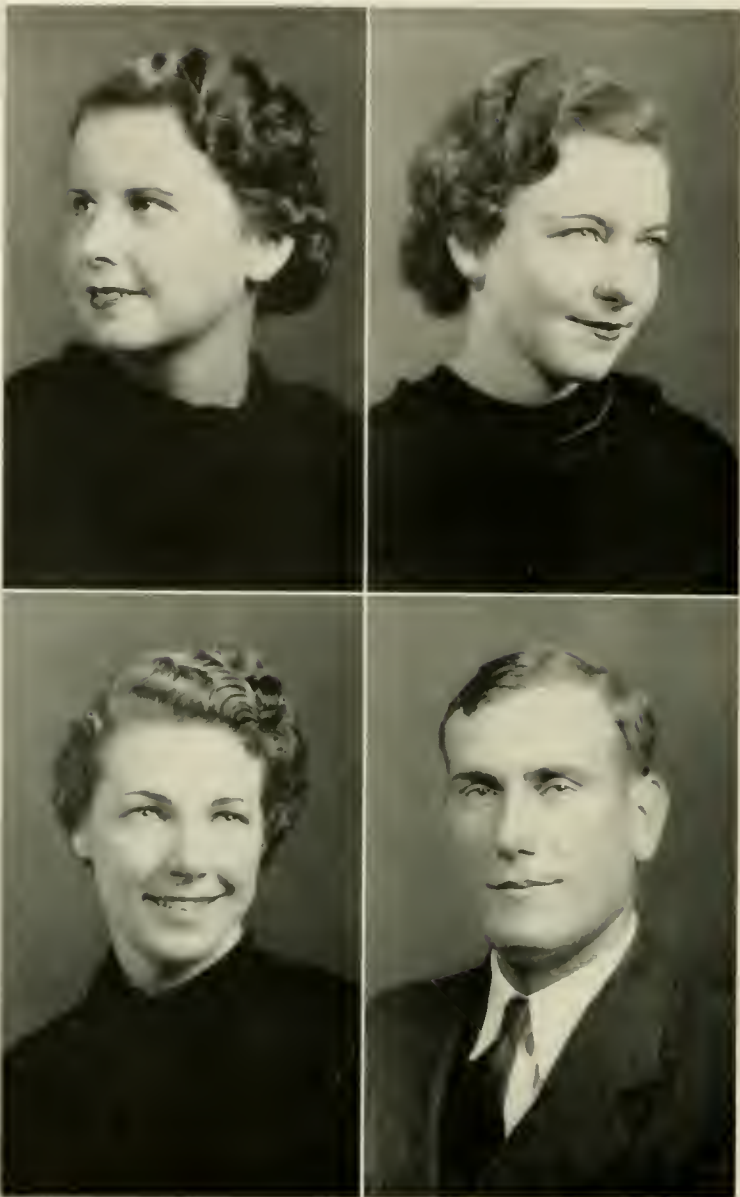


NINETEEN THIRTY EIGHT

GLENN SWOFFORD

BOONE, N. C.

*Grammar Grade Education*



MARY KATHLEEN STOUT  
STAR, N. C.

*Primary Education*

Boiling Springs Junior College (1); White Hall Club (2); New Dormitory Club (3, 4); Dyncian Literary Society (2, 3, 4); Methodist Club (2, 3, 4).

CATHERINE STYERS  
WINSTON-SALEM, N. C.

*Primary Education*

Thalian Literary Society (1, 2, 3, 4), Corresponding Secretary (3), Treasurer (4); Methodist Club (1, 2, 4), Vice-President (2); Home Economics Club (1, 2, 3), Vice-President (1), Treasurer (2), President (3), Treasurer (3); Y. W. C. A. (1, 2, 4), Junior Cabinet Member (1); White Hall Club (1); New Dormitory Club (2, 3, 4); Playerafters (4).

ORA SUGGS  
GASTONIA, N. C.

*Physical Education and Mathematics*

Berry College (1, 2); Thalian Literary Society (3, 4), Secretary (3); *Appalachian Staff*, Social Editor (4); International Relations Club (4); National Economics Club (4), Secretary (4); Physical Education Major Club (3, 4), Reporter (4); Basketball (3, 4); Y. W. C. A. (3, 4), Cabinet (4); Lovill Club (3), Secretary (3); New Dormitory Club (4); Methodist Club (3, 4).

GANNON TALBERT, JR.  
ADVANCE, N. C.

*History and Physical Education*

Rutherford College (1, 2); Alpha Sigma Gamma (3, 4); Baseball (3, 4); Intramural Athletics (3, 4).

SENIORS

DWAYNE THOMPSON  
PHILADELPHIA, N. Y.

*History, English and French*

Alpha Lambda Sigma (1, 2, 3, 4), President (3); International Relations Club (2, 3, 4), President (4); National Economics Club (2, 3, 4); Debating Club (3, 4); Forensic Club (4), President (4); ROTONDEX BROS Staff (3, 4).





AMY JANE TALBERT

ADVANCE, N. C.

*Primary Education*

Thalian Literary Society (4); Methodist Club (4); Lovill Club (4).

PANSY EVELYN TALENT

VALE, N. C.

*Primary Education*

Phila Retian Literary Society (1, 2, 3, 4), Censor (4); Home Economics Club (3, 4), President (3), Critic (3); B. S. U. Council, Devotional Vice-President (4); B. Y. P. U. (1, 2, 3, 4), Vilma Preslar Union, President (4); Y. W. C. A. (3, 4); White Hall Club (1); Lovill Club (3); New Dormitory Club (2, 4); Lincoln County Club (1, 2).

STELLA TILLEY

MOUNT AIRY, N. C.

*Grammar Grade Education*

Vernician Literary Society (1, 2, 3, 4); Y. W. C. A. (2, 3); White Hall Club (4); Home Economics Club (4); Lovill Club (1, 2, 3).

REBECCA MAY WARDEN

LAUREL SPRINGS, N. C.

*Primary Education*

Phila Retian Literary Society (1, 2, 3, 4), Secretary (3), Vice-President (4); Lovill Club (1); New Dormitory Club (2, 3, 4); Y. W. C. A. (1, 2, 4), Junior Cabinet Member (1); Presbyterian Club (1, 2, 3, 4), President (3), Council (1, 2, 3, 4); Alleghany County Club (1, 2).



NINETEEN THIRTY EIGHT

KARL P. THRONEBURG

HUDSON, N. C.

*Mathematics and History*



ADA RUTH WATTS  
TAYLORSVILLE, N. C.

*Grammar Grade Education*

Thalian Literary Society (1, 2, 3, 4); Lovill Club (1, 2, 3, 4), President (2); Y. W. C. A. (1, 2, 3, 4), Choir (3, 4); Sunday School Officer (1, 2); B. S. U. (1, 2), Group Captain (2); Intramural Athletics (1, 2); Playcrafters (2).

MARGARET PEARLE WEBB  
MORGANTON, N. C.

*Grammar Grade Education*

Phila Retian Literary Society (1, 2); Y. W. C. A. (1, 2), Junior Cabinet (2), Pianist (2); White Hall Club (2).

PAULINE BAILEY WEBB  
STATESVILLE, N. C.

*Primary Education*

Mitchell College (1, 2); Dynician Literary Society (3, 4), Censor (4); Methodist Club (3, 4); Home Economics Club (3, 4); Lovill Club (3); White Hall Club (4); Marshal (3); Y. W. C. A. (4).



ROY HARRIS TURBYFILL, JR.  
MAIDEN, N. C.

*Mathematics and Science*

Football (1, 2, 3, 4); Basketball (1, 2); Alpha Lambda Sigma (1, 2, 3, 4), Censor (4); "A" Club (3, 4).

# SENIORS

GRADY WESLEY TYREE  
CRESTON, N. C.

*Grammar Grade Education*

Alpha Sigma Gamma (2, 3, 4), Secretary (4); Ashe County Club (2, 3, 4); Extemporaneous Club (4); Y. M. C. A. (4).



VEVETTE WEHUNT  
CHERRYVILLE, N. C.

*Primary Education*

Phila Retian Literary Society (1, 2, 3, 4),  
Censor (3); White Hall Club (1); B. Y.  
P. U. (1, 2, 3, 4).

VANDA KATHRYN WHICKER  
WINSTON-SALEM, N. C.

*English, French, and Physical  
Education*

White Hall Club (1); Basketball (1, 2,  
3, 4); Dyncian Literary Society (1, 2, 3,  
4), Critic (2), Secretary (3); Playcrafters  
(3, 4); Y. W. C. A. (3, 4); Junior Cabinet  
(4); Class Secretary (3); May Queen At-  
tendant (3); National Economics Club (2,  
3, 4), Secretary (4); "A" Club (1, 2, 3, 4);  
Physical Education Major Club (2, 3, 4);  
Le Cercle Francais (1, 2, 3, 4), Vice-Presi-  
dent (3); New Dormitory Club (2, 3, 4).

JANE ETHEL WHISNANT  
RUTHERFORDTON, N. C.

*Grammar Grade Education*

Asheville Normal (1, 2); Thalian Liter-  
ary Society (3, 4), Chorister (4); White  
Hall Club (3); New Dormitory Club (4);  
Methodist Club (3, 4); Playcrafters (3);  
Glee Club (3, 4).

DAISY MAY WILLIAMS  
BOONE, N. C.

*French and English*

Y. W. C. A. (1, 2, 3, 4), Cabinet (1, 2,  
3, 4), President (4); Dyncian Literary  
Society (1, 2, 3, 4), Chorister (2), Secretary  
(3), President (3); Glee Club (2, 3, 4),  
Vice-President (3, 4); International Rela-  
tions Club (3, 4); Playcrafters (2, 3, 4);  
Le Cercle Francais (2, 3, 4); Class Treas-  
urer (3); May Court (2, 4), Attendant (2),  
Queen of May (4).

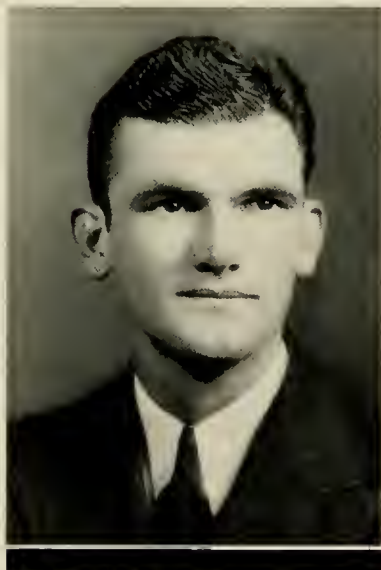


NINETEEN THIRTY EIGHT

ISAAC LYNN WAGNER  
TROUTMAN, N. C.

*Mathematics and Science*

North Carolina State College (1, 2);  
Basketball (3, 4); Baseball (3, 4); "A"  
Club (3, 4).





HARRIET ELIZABETH WILSON  
NEBO, N. C.

*Primary Education*

Asheville Teachers College (1, 2, 3);  
Phila Retian Literary Society (4); Home  
Economics Club (4); White Hall Club (4).



NELL WILSON  
HUNTERSVILLE, N. C.

*Primary Education*

Montreat College (1, 2); Presbyterian  
Club (3, 4); Lovill Club (3, 4); Student  
Volunteer (3, 4); Y. W. C. A. (4).

MARGARET MAE WRAY  
VALE, N. C.

*History and English*

Dynician Literary Society (1, 2, 3, 4),  
Vice-President (2), Chaplain (3); National  
Economics Club (3), Vice-President (4);  
Lovill Club (1, 2); New Dormitory Club  
(3, 4); Y. W. C. A. (2, 3, 4); Methodist  
Club (1, 2, 3, 4); Playcrafters (1, 2, 3, 4);  
Basketball (4); Social Science Club (4).

---

# SENIORS

---

CLAUDE C. WHITLEY  
ALBEMARLE, N. C.

*Mathematics and Science*

Alpha Lambda Sigma (4); Y. M. C. A.  
(4).



CLARA MAE WRIGHT  
FALLSTON, N. C.

*Grammar Grade Education*

Asheville Normal (1, 2); White Hall Club (3); New Dormitory Club (4); Dynician Literary Society (3, 4); Methodist Club (3, 4); Y. W. C. A. (3, 4).



HELEN ELIZABETH YODER  
LINCOLNTON, N. C.

*Grammar Grade Education*

Dynician Literary Society (4); L. S. A. (1, 2, 3, 4), President (4); Lovill Club (4).



JAMES OLIVER YOUNG  
BAKERSVILLE, N. C.

*History and English*

Debating (2); International Relations Club (4); Alpha Sigma Gamma (4); Appalachian Forensic Society (3); Y. M. C. A. (4); National Economics Club (4); Social Science Club (4), President (4).

NINETEEN THIRTY EIGHT

LOUISE FRANCES YORK  
MOUNT AIRY, N. C.

*Primary Education*

Home Economics Club (3, 4); Thalian Literary Society (4); White Hall Club (1); New Dormitory Club (2, 3, 4).





SGANARELLE

# JUNIORS



WILLIAM LINDSAY  
*President*



BANKS HEAFNER  
*Vice-President*



MARGARET AGLE  
*Secretary*



CLIFFORD LONG  
*Treasurer*



EVFLYN ADAMS	Conover, N. C.
GUS ANTONAKOS	Boone, N. C.
GENEVA ARMSTRONG	Mount Airy, N. C.
DAISY AUSTIN	Boone, N. C.
BEULAH BAIRD	Valle Crucis, N. C.
TRUMAN BAKER	Crumpler, N. C.
FAYE BALLEW	Celo, N. C.
DORIS BANDY	Lincolnton, N. C.
CAROL BANNER	Montezuma, N. C.
MADGE BEAM	Cherryville, N. C.
ANNIE BEARD	Huntersville, N. C.
ELIZABETH BENBOW	Oak Ridge, N. C.

## JUNIORS



FLOY BENFIELD  
 AMOS BEST  
 EDDIE BINGHAM  
 MARY BINGHAM  
 R. K. BINGHAM, JR.  
 ANNETTE BLANTON  
 MRS. BLANCHE C. BLUE  
 FRANCES BODENHAMER  
 KATHRYN BRACEY  
 ROBERT BROOME  
 EDNA FOX BROWN  
 VIRGINIA BRYANT

Lenoir, N. C.  
 Bessemer City, N. C.  
 Boone, N. C.  
 Boone, N. C.  
 Boone, N. C.  
 Lattimore, N. C.  
 West Jefferson, N. C.  
 Winston-Salem, N. C.  
 Rowland, N. C.  
 Marion, N. C.  
 Statesville, N. C.  
 Boone, N. C.

---

# JUNIORS

---





JEAN BUCHANAN	Marion, N. C.
GOLDEN BUCKLAND	Lanark, West Va.
OTIS BUNDY	Jamestown, N. C.
MRS. ZED H. BURNS	Boone, N. C.
LEOLA CAGLE	Carthage, N. C.
VIOLA CAGLE	Carthage, N. C.
FLOY CANNON	Vilas, N. C.
MARTHA J. CARROLL	Salisbury, N. C.
LAURA ELLEN CARSON	Rutherfordton, N. C.
PEARL CHATHAM	Kannapolis, N. C.
WAYNE CHURCH	Wilkesboro, N. C.
ANNA BELLE COFFEY	Boone, N. C.

## JUNIORS

MARTIN COLE  
 MARGARET COLLIER  
 ALICE COOK  
 RUTH COX  
 WILBUR CRAFT  
 W. R. CURLEE  
 CULVER DALE  
 REBECCA DARNELL  
 KATHLEEN DAY  
 WALLINE DECK  
 MARY LOU DEDMON  
 JUANITA DICKERSON

Salisbury, N. C.  
 Liberty, N. C.  
 Boone, N. C.  
 New Dale, N. C.  
 Cherryville, N. C.  
 Marshville, N. C.  
 Mica, N. C.  
 Wagoner, N. C.  
 Statesville, N. C.  
 Bessemer City, N. C.  
 Shelby, N. C.  
 Salisbury, N. C.

# JUNIORS







KYLE DICKSON	Silas Creek, N. C.
ROUTH DIXON	Rocky Mount, N. C.
SARAH DOGGETT	Shelby, N. C.
DELIA WHITE DOUGLAS	Harmony, N. C.
MABON DYE	Madison, N. C.
HILDA EAKER	Cherryville, N. C.
CHRISTINE EDENS	Rowland, N. C.
RACHEL ELLER	Newland, N. C.
VERONA ERVIN	Catawba, N. C.
MARGARET EURY AGLE	Bessemer City, N. C.
MELVIN FAIRLEY	Gulfport, Miss.
BRUCE FARTHING	Boone, N. C.

## JUNIORS



WHEELER FARTHING  
 EUDELL FORMYDUVAL  
 IRENE FORT  
 COLONEL FRANCIS  
 CLEO FRYE  
 BEULAH FUNDERBURK  
 THOMAS GRAYBEAL  
 HOYLE GREEN  
 PAUL GREENE  
 WILLIAM HALYBURTON  
 CLYDE HARDING  
 MILDRED HARRELL

Valle Crucis, N. C.  
 Hallsboro, N. C.  
 Boone, N. C.  
 Crumpler, N. C.  
 Catawba, N. C.  
 Monroe, N. C.  
 Lansing, N. C.  
 New London, N. C.  
 Shelby, N. C.  
 Stony Point, N. C.  
 Chocowinity, N. C.  
 Peppers, N. C.

JUNIORS





MARTHA HARRILL	Rutherfordton, N. C.
LOUIS HARTLEY	Valle Crucis, N. C.
BANKS HEAFNER	Lincolnton, N. C.
FRANCES HERMAN	Conover, N. C.
ROBERT S. HILL	Statesville, N. C.
MARY HOOVER ASHLEY	Boone, N. C.
EVA JONES HOPKINS	China Grove, N. C.
STEPHEN HOUSER	Bessemer City, N. C.
PHIL HUDSON	Biloxi, Miss.
IZETTA HUTCHINSON	Boone, N. C.
JAMES INGRAM	Statesville, N. C.
ORVILLE JACKSON	Brookside, N. C.

## JUNIORS

ROBERT B. JACKSON  
 HESSIE JAYNES  
 ELIZABETH JONES  
 RUBY KILPATRICK  
 ALENE KING  
 ALICE KING  
 GLADYS KING  
 WADE KINLAW, JR.  
 HOWARD KISER  
 MABEL KLUTZ  
 MARGARET KNOTT  
 WILMA LACKEY

West Jefferson, N. C.  
 Lenoir, N. C.  
 Furches, N. C.  
 Concord, N. C.  
 Pinnacle, N. C.  
 Burlington, N. C.  
 Reidsville, N. C.  
 Lumberton, N. C.  
 Lincolnton, N. C.  
 Gold Hill, N. C.  
 Oxford, N. C.  
 Cherryville, N. C.

# JUNIORS







REID LANEY	Newton, N. C.
JOE LANGLEY	Laurinburg, N. C.
FRANCES LATHAN	Monroe, N. C.
LOUISE LEONARD	Albemarle, N. C.
WILLIAM LINDSAY	York, S. C.
LILLIAN LINNEY	Wilkesboro, N. C.
CLIFFORD LYNN LONG	Lexington, N. C.
LUCILLE LOPP	Lexington, N. C.
EUGENIA LYNN	Statesville, N. C.
L. C. MAPLES	Valle Crucis, N. C.
MILTON MAST	Boone, N. C.
MARY C. MCCOLLUM	Madison, N. C.

## JUNIORS



GLADYS MCCURDY  
 ETHEL MCDADE  
 GENEVA MCMANUS  
 DAISY LEE MEACHAM  
 MARY LOUISE MELVIN  
 PAULINE MICHAEL  
 FAY L. MILLER  
 LORRAINE MILLER  
 ELIZABETH MILLS  
 ETTA MILLS  
 WARREN MITCHELL  
 HERMAN OWENS  
 ODESSA PARKS

Concord, N. C.  
 Forest City, N. C.  
 Midland, N. C.  
 Hamlet, N. C.  
 Raleigh, N. C.  
 Southmont, N. C.  
 Boone, N. C.  
 Laurel Springs, N. C.  
 Charlotte, N. C.  
 Hudson, N. C.  
 Appalachia, Va.  
 Caroleen, N. C.  
 Reidsville, N. C.

# JUNIORS





MAE SUE PEGRAM	Greensboro, N. C.
GLENN PERRY	Joy, N. C.
MRS. VERGIE CHURCH PERRY	Boone, N. C.
JACK POTEAT	Marion, N. C.
GEORGE P. POWELL	Charlotte, N. C.
EDITH PRATT	Winston-Salem, N. C.
FRED PUTNAM	Waco, N. C.
KEITH REDMOND	New Hope, N. C.
DEMA REEVES	Laurel Springs, N. C.
AGNES RHYNE	Charlotte, N. C.
MARTHA RITCHIE	New London, N. C.
WAGNER ROBERTS	Hartsville, S. C.
JOSEPHINE ROBINSON	West Jefferson, N. C.

## JUNIORS

# JUNIORS

HAROLD T. RUMMAGE	Albemarle, N. C.
LLOYD H. SANDLIN	Verona, S. C.
AILEEN SCISM	Kings Mountain, N. C.
GLENN SHIDAL	Vale, N. C.
LOUISE SHOAF	Lexington, N. C.
LOIS SIDES	Albemarle, N. C.
JAP SIMMONS	Due West, S. C.
HELEN SMITH	Mooresville, N. C.
MARY JANE SNOW	Siloam, N. C.
FRANCES SPILLMAN	Mocksville, N. C.
NAOMI STEELMAN	Yadkin Valley, N. C.
ELOISE STROUPE	Fallston, N. C.
BYRON STUART	Ashland, N. C.







HALLIE SWEATT	Cherryville, N. C.
ROSE SWOFFORD	Leaksville, N. C.
HAZEL LEE TAYLOR	Laurel Springs, N. C.
GLADYS TERRY	Siler City, N. C.
E. S. THOMAS	Franklinville, N. C.
LOLA THOMAS	Monroe, N. C.
BLANCHE TOWNSEND	Boone, N. C.
GLENN TROUT	Forest City, N. C.
WORTH TURNER	Teachey, N. C.
ELIZABETH VONCANON	Banner Elk, N. C.
EDITH WALKER	Boone, N. C.
GEORGE WALL	Boomer, N. C.
JAMES WALL	Mocksville, N. C.

---

## JUNIORS

---



VIRGINIA WEBER  
 HUGH WHITE  
 BERNICE WHITESIDES  
 MARGARET MAE WILSON  
 WENDAL T. WILSON  
 CARSON WOOD  
 LEN WOODRUFF  
 CHARLES WRIGHT  
 RUBY WYATT  
 PEARL YORK  
 EVELYN YOUNG  
 GRACE OLIVE YOUNG  
 VIRGINIA YOUNT

Statesville, N. C.  
 Union Grove, N. C.  
 Shelby, N. C.  
 Nebo, N. C.  
 Boone, N. C.  
 Barium Springs, N. C.  
 Hayes, N. C.  
 Boone, N. C.  
 Vannoy, N. C.  
 Staley, N. C.  
 Asheville, N. C.  
 Bakersville, N. C.  
 Lincolnton, N. C.

# JUNIORS







VALERE

# SOPHOMORES



CHARLES WALTERS  
*President*



DWIGHT GRUBBS  
*Vice-President*



MARTHA GARNER  
*Secretary*



VIRGINIA PARRISH  
*Treasurer*



*First Row*

FRANCES ANDERSON  
 JOHN ANDERSON  
 LUISE ARMSTRONG  
 LULA ATKINS

*Second Row*

HAZEL AUSTIN  
 LILA AUSTIN  
 SYBIL BAGBY  
 HENRY BAGGETT

*Third Row*

LUCILLE BAKER  
 MARGARET BARLOWE  
 DEWEY BARNHILL  
 LEITHA BEAM

*Fourth Row*

THELMA BEAM  
 ALMA BECK  
 DAVID BLACK  
 TOM BLACK

---

## SOPHOMORES

---



# SOPHOMORES

*First Row*

NEAL BLAIR, JR.  
LEAFYBELLE BLANTON  
BETTY BOSTIC  
JOSEPHINE BRADLEY

*Third Row*

MARGARET BUMGARNER  
EDITH BURLESON  
KATHERINE BURLESON  
AZILE BURNS

*Second Row*

ELSIE LEE BRAKE  
WILMA BRIDGES  
HAL BROWN  
HAZEL DARE BROWN

*Fourth Row*

LUCILLE CAMPBELL  
JACKIE CARICO  
EDWIN CARTER  
MADGE CARTER





*First Row*

GARNETT CLARK  
 LALLA CLAY  
 ELLEN CLIFTON  
 LLOYD E. COLLINS

*Second Row*

GEORGE CORN  
 MILDRED COWAN  
 MARGARET COWLES  
 HAZEL CRAFT

*Third Row*

LOUISE CRESS  
 ROSALIE DEARMIN  
 DIANA LYNN DELAPP  
 THELMA DODD

*Fourth Row*

R. P. DOUGHERTY  
 PAULINE DOUGLAS  
 LAWRENCE DOWDY  
 GRETCHEN DUNCAN

---

## SOPHOMORES

---

# SOPHOMORES

## *First Row*

STELLA DYE  
FRED EDWARDS  
LOWELL ELLIS  
JESSIE ERVIN

## *Third Row*

GLADWYN GABRIEL  
DON GAFFNEY  
MADGE GAMBILL  
MARTHA GARNER

## *Second Row*

DOROTHY FARTHING  
LOUISE FISHER  
MILDRED FRADY  
WILLIAM FRANCIS

## *Fourth Row*

MILTON GASKILL  
HORACE J. GOOD  
HELEN GRAGG  
LOUISE GRAYSON







*First Row*

MARY HELEN GREENE  
 MABEL VIRGINIA GREER  
 DWIGHT GRUBBS  
 JOE HARDIN

*Second Row*

STANLEY HARRIS  
 LOUISE HAYES  
 MARY LILLIAN HAYNES  
 ELIZABETH HEADE

*Third Row*

DELLMA HENSLFY  
 A. L. HODDER  
 LOUISE HOLLAND  
 VIVIAN HOLLOWAY

*Fourth Row*

NED HONEYCUT  
 FRANCIS HOOVER  
 LOUISE HUDGINS  
 MARY HUDGINS

---

## SOPHOMORES

---



# SOPHOMORES

*First Row*

MAXINE HUGHES  
GLENN HULL  
JEROME HUNEYCUTT  
DOROTHY HURST

*Third Row*

RUTH M. JOHNSON  
ANNABETH JONES  
MARY RUTH JONES  
THAD JONES

*Second Row*

LUCILLE ICARD  
KATHERINE IRWIN  
MAUDE JAMES  
KENNETH L. JOHNSON

*Fourth Row*

SAM KAPLAN  
HOWARD KIMEL  
WILLIAM KINCAID  
BLANCHE KISER





*First Row*

ALLAN LATHAN  
 VISTA LAWSON  
 RUBY LEDFORD  
 IDELL LOWDER

*Second Row*

OPAL LOWE  
 LISETTE MARTIN  
 LUCIENNE MASSEY  
 VIRGINIA MCCALL

*Third Row*

MARSHALL MCCLURE  
 MARY MCCURRY  
 ELLEN McFALL  
 JOHN MCGINNIS

*Fourth Row*

THELMA MCKINNEY  
 FRANKIE MILLER  
 CATHERINE MILLS  
 WILLIAM MITCHELL

**SOPHOMORES**

# SOPHOMORES

*First Row*

BETTY MODLIN  
 MARTHA MONTEITH  
 MARY ELIZABETH MONTEITH  
 JACK P. MORTON

*Third Row*

VIRGINIA PARRISH  
 JENNIE LOWE PEBBLES  
 DOROTHY PEGRAM  
 ANNA PELL

*Second Row*

ANDRÉ NADEAU  
 ELIZABETH NEAL  
 MATTIE NEEDHAM  
 MABEL RUTH NORRIS

*Fourth Row*

ETHEL PERRY  
 FLEMING PERRY  
 RALPH PERRY  
 RICHARD PETERSON







*First Row*

CFCIL POF  
 PEARL POOVEY  
 CLARA HUNTLER PORTER  
 WILLIAM PUGH

*Second Row*

JOHN RACKLEY  
 JEKOLIA READER  
 GERALDINE REDDING  
 HIGHT REDMOND

*Third Row*

MARGARET RHYNE  
 EDITH ROBERTS  
 RICHARD ROGERSON, JR.  
 ELMO ROTHROCK

*Fourth Row*

HAZEL SAIN  
 BEATRICE SATTERWHITE  
 CULOS SETTLE  
 GERALDINE SETZER

## SOPHOMORES



# SOPHOMORES

*First Row*

JESSE SIFFORD  
RAY SILLS  
GRACE SIMPSON  
FRED SINK

*Third Row*

AKARD SPURGEON  
DOROTHY STACY  
LOIS STARNES  
MADA STEELE

*Second Row*

FRED SMITH  
PEARLE SMITH  
BILLY SNOW  
RUTH SPOON

*Fourth Row*

ANNIE STILES HARDIN  
JESSE STONE  
MARTHA STONESTREET  
KATE STROUPE





*First Row*  
 MYRTLE STROUPE  
 RUTH SUGGS  
 MARY SUMMEY  
 LEWIS SWOFFORD

*Second Row*  
 STELLA TATE  
 MILDRED TAYLOR  
 GREELY TEAGUE  
 HAZEL TEAGUE

*Third Row*  
 MARIE TEMPLETON  
 LEONA TOWNSEND  
 JAMES TUCKER  
 EVELYN TURNER

*Fourth Row*  
 LUCILLE UPTON  
 LORENE VANCE  
 HENRY VANHOY

## SOPHOMORES

# SOPHOMORES

*First Row*

EUGENIA VERNON  
 WEAVER WADE  
 ECCLES WALL  
 CHARLES WALTERS

*Third Row*

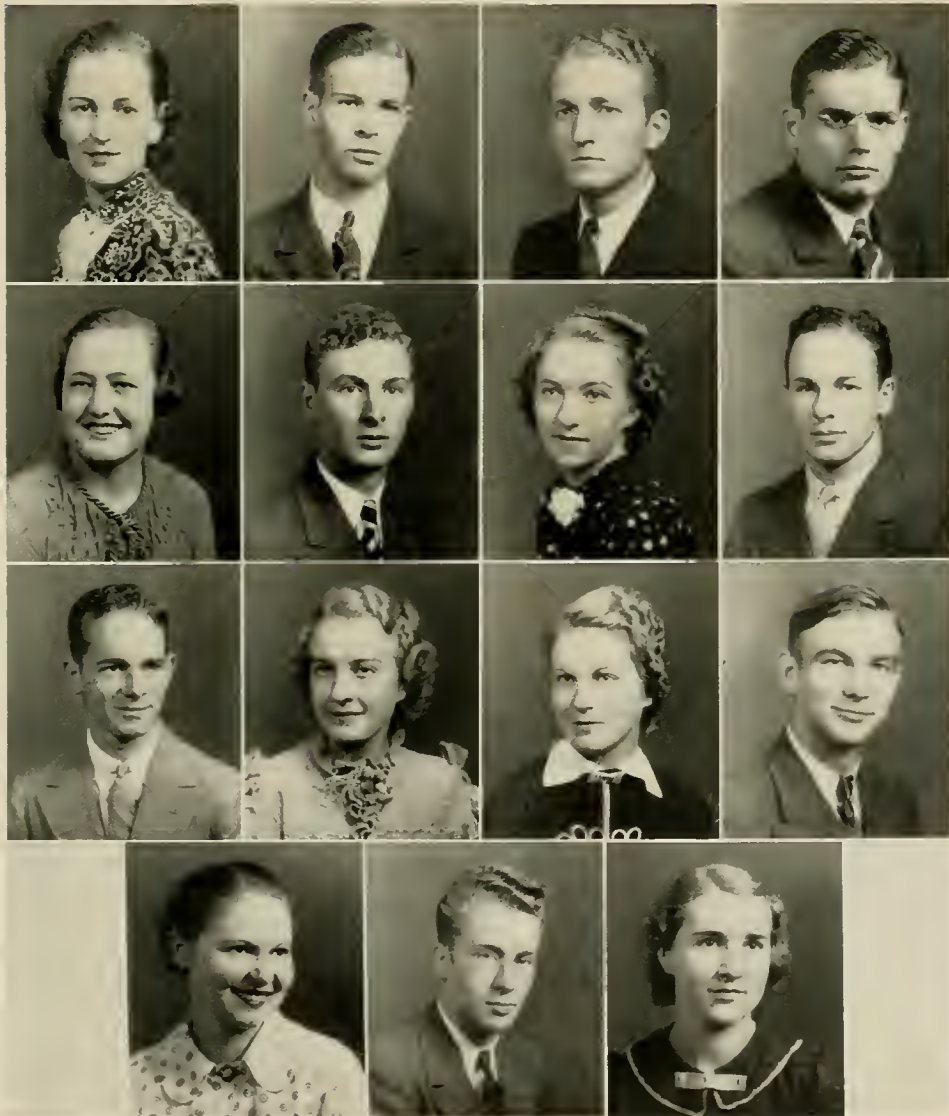
JOE WHITE  
 RENA WHITE  
 LOUISE WILKINSON  
 LYNN B. WILLIAMSON

*Second Row*

KATE E. WASHBURN  
 LEE WEST  
 CAREY WESTMORELAND  
 ERNEST WHITE

*Fourth Row*

DAISY MORRIS WILSON  
 ROY WILSON  
 LOUISE WYKE









LUCAS

# FRESHMEN



LAWRENCE HORNFECK  
*President*



JOSIEPHYNE PIERCE  
*Vice-President*



MILDRED GUY  
*Secretary*



JACK RUFFIN  
*Treasurer*



*First Row*  
 HELMA ADAMS  
 JENNIE SUE ALLEN  
 EUGENE ALLISON  
 SADELL ALLRED  
 CHRISTINE ANTHONY

*Second Row*  
 DOROTHY JANE ARMSTRONG  
 DOROTHY ATKINSON  
 ROBERT AUSTIN  
 MARTHA BACON  
 JUANITA BAGGETT

*Third Row*  
 DORIS BAILEY  
 CLYDE BALDWIN  
 ELSIE BARNETTE  
 ANNELLE BEACH  
 MARY GENE BEAM

*Fourth Row*  
 FRANCES BECKNER  
 MARION BEST  
 MIRIAM BINGHAM  
 VIRGINIA BINGHAM  
 HAZELENE BLAKE

---

# FRESHMEN

---

# FRESHMEN

*First Row*

RAYMOND BRADY  
 EVELYN BROWN  
 JAMES H. BROWN  
 ARLEE BROYHILL  
 ANNIE MAE BURTON

*Third Row*

RUTH CAUDILL  
 EDWARD CLAY  
 MARY COLLINS  
 LOUISE COMER  
 ELENE CONNER

*Second Row*

MARGARET CABANISS  
 LOIS CAIN  
 FRANCES CANIPE  
 KEITH CARPENTER  
 LUTHER CARSON

*Fourth Row*

INEZ COOKE  
 ANNA LENA COOPER  
 ANNA BELLE COUNCIL  
 RUTH CRAFT  
 FRANK CRAYTON







*First Row*

BERTHA ELIZABETH CROUSE  
 MELVIN DAUGHTRIDGE  
 MURIEL DAVIS  
 DOROTHY DEAL  
 HAZEL DIXON

*Third Row*

MILDRED EARL  
 MINNIE EDWARDS  
 JOHN EDGAR ELAM  
 WILLIE LOUISE ELAM  
 MARGARET ENGLISH

*Second Row*

REBECCA DONNELLY  
 MARJORIE DOUGLAS  
 MARY ELIZABETH DOUGLAS  
 WILLIAM DOUGLAS  
 MARY RUTH DURHAM

*Fourth Row*

ERNEST ERVIN  
 MILDRED FARTHING  
 VANN FARTHING  
 MADGE FERGUSON  
 SARAH E. FORT

**FRESHMEN**



# FRESHMEN

*First Row*

GERALDINE FOX  
 CARL GALLIMORE  
 DONA GANTT  
 ADAM GIBSON  
 GENEVA LEE GOODMAN

*Third Row*

BERTHA MILLER GRIFFIN  
 MILDRED GUY  
 FLORENCE GWALTNEY  
 PAUL HAGAMAN  
 MARIE HALSEY

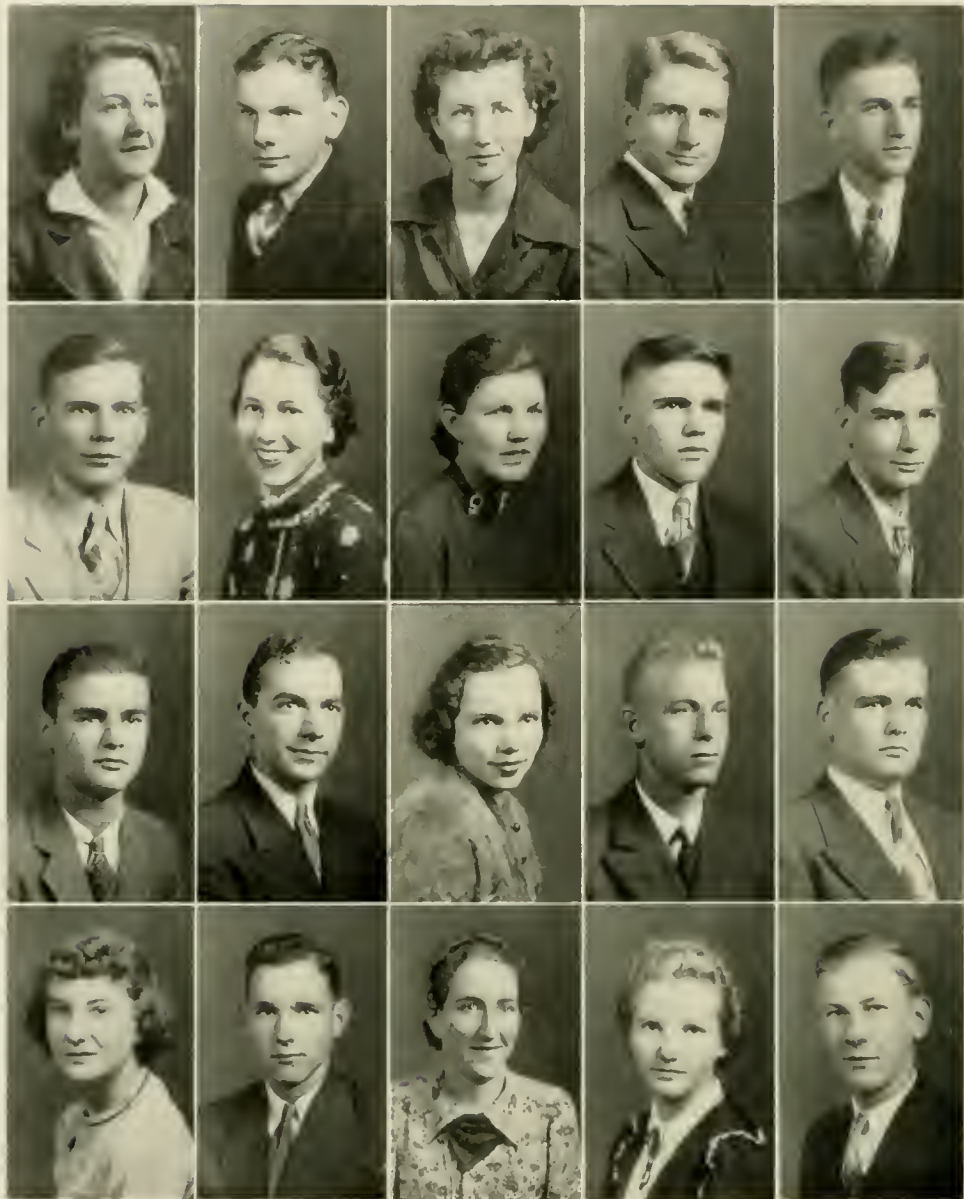
*Second Row*

NEIL GOODNIGHT  
 FRED M. GRAGG  
 ALDA B. GREENE  
 EVA GREER  
 SHERRILL GREGORY

*Fourth Row*

ZENNA HALSEY  
 RAYMOND HAMPTON  
 BERRENE HARRIS  
 J. BANARD HARRIS  
 JOY HARRIS





*First Row*  
 MAE HODGES  
 RALPH HOLDER  
 EDNA HOLLOWAY  
 LAWRENCE HORNFECK  
 MAXWELL HOVIS

*Second Row*  
 CRAIG HULL  
 GWENDOLYN HUNT  
 MYRTLE HUTCHISON  
 CLARENCE INGRAM  
 LEWIS C. JARVIS

*Third Row*  
 CLAY JESSUP  
 D. K. JOBE, JR.  
 JUANITA JOBE  
 EDWIN JOHNSON  
 RAYMOND JOHNSON

*Fourth Row*  
 RUTH JOHNSON  
 TY JOHNSON  
 HELEN JONAS  
 MARILYN CLEO JONES  
 H. I. JOYCE

---

**FRESHMEN**

---

# FRESHMEN

*First Row*

NANCY JURNEY  
 JEAN KELLY  
 MARY B. KNOX  
 PAUL KOVACEVICH  
 IRIS LANDIS

*Third Row*

ETHEL MCCANN  
 MARGARET MCCOLLUM  
 JOE MCCRARY  
 LOUISE MCCREADY  
 HELEN McDONALD

*Second Row*

JANE LEFLER  
 MILDRED LITTLE  
 MELBA LOVILL  
 CHARLES N. MANSHIP  
 CARSON MARTIN

*Fourth Row*

MARY BOYCE MCGILL  
 RUTH MCGUIRE  
 HELEN MCKINNEY  
 RETTA McLAMB  
 EDWARD MEACHAM







*First Row*

J. W. MILLER  
 ANNA LEE MILLS  
 ANN MOORE  
 OLA MAE MORETZ  
 CATHERINE MORRIS

*Second Row*

VIRGINIA MORRIS  
 JESSE LEE MORROW  
 MARY FRANCES MOSS  
 WILLENE MOSS  
 JACK NANTZ

*Third Row*

EDNA NESBITT  
 JOHN NESBITT  
 RAY NORMAN  
 SYLVIA PAGE  
 CHARLOTTE PARKER

*Fourth Row*

EDNA PARKER  
 CHARLES PARKS  
 ELIZABETH PARSONS  
 HATTIE PEGRAM  
 ROSA LEE PENDRY

---

**FRESHMEN**

---



# FRESHMEN

*First Row*

IRENE PHILLIPS  
 RICHARD PHILLIPS  
 JOSIEPHYNE PIERCE  
 ROSEBUD PLEASANT  
 KATHALEEN POINDEXTER

*Third Row*

ELIZABETH PUTNAM  
 LOUISE ROBBINS  
 BILL ROBERTSON  
 ALMA ROBINSON  
 KATIE JEAN ROWE

*Second Row*

FLOYD POOLE  
 FAYE POOVEY  
 MARION POOVEY  
 MARY CAROLYN PRICE  
 THOMAS PRICE

*Fourth Row*

JACK RUFFIN  
 ERNEST SAFRIT  
 HERSEL SCOTT  
 KEN SHERRILL  
 KATHRYN SHERWOOD





*First Row*  
 PHOEBE LOU SHIRLEY  
 ANNIS SIF-FORD  
 JEAN SINGLETON  
 LUCY TABOR SLADE  
 EDNA SMITH

*Second Row*  
 RUTH SMITH  
 JOHNNIE SPEAS  
 RAY SPRUILL  
 GAYNELLE STANLEY  
 CAMPBELL STEWART

*Third Row*  
 PORTER STILES  
 BONNIE SWARINGEN  
 PAUL SWOFFORD  
 HARVEY TAYLOR  
 SARAH LEE THOMAS

*Fourth Row*  
 WILLIAM TREVATHAN  
 INEZ TRIPLETT  
 RUBY TRIVETTE  
 LOREE VENABLE  
 MARGARET VOSS

## FRESHMEN

# FRESHMEN

*First Row*

CATHERINE WARD  
 ARENDALL WARMAN  
 JEAN WARWICK  
 MARGARET WASHAM  
 MARGARET WATTS

*Third Row*

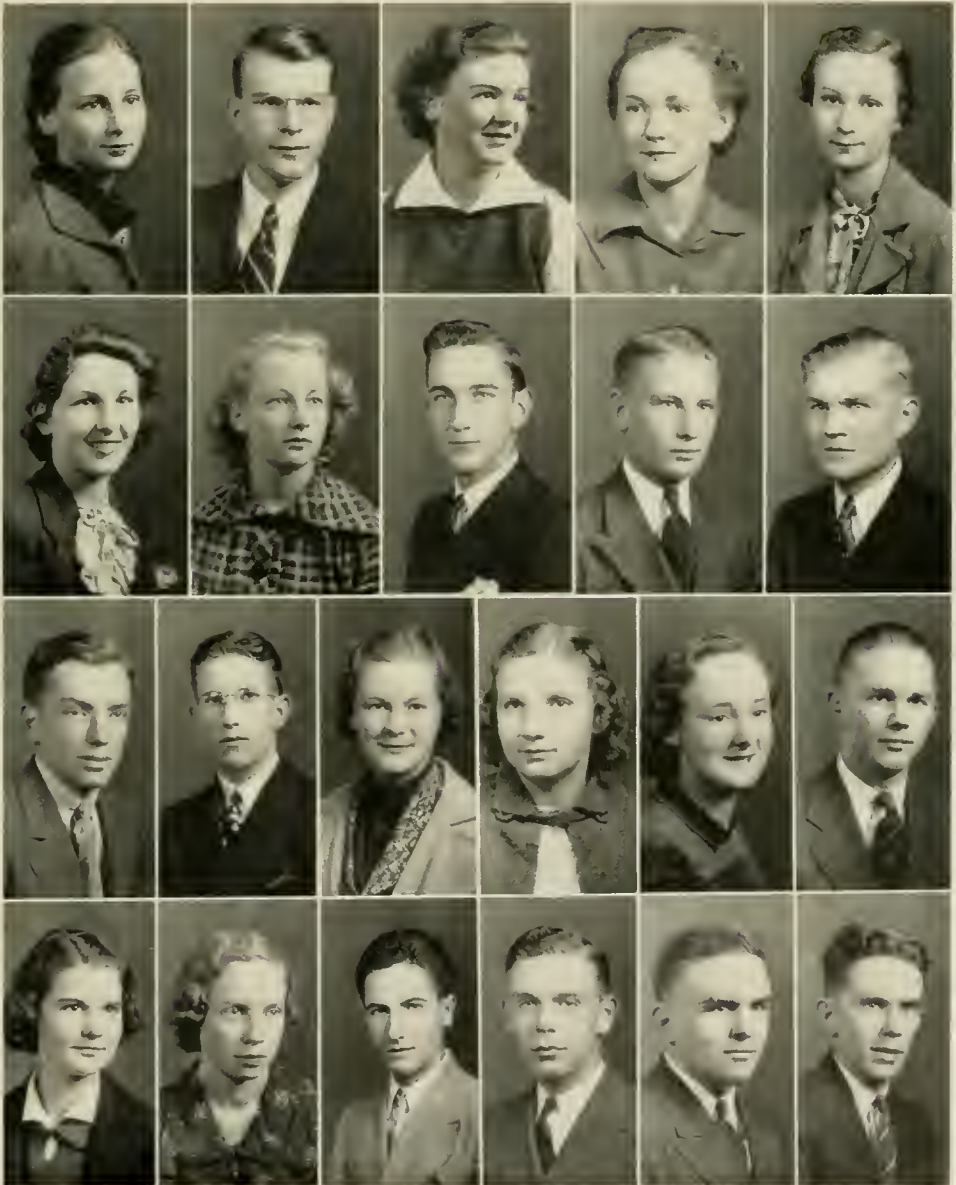
EDWARD WHITLEY  
 CLEO WILLIAMS  
 LOUISE WILLIAMS  
 EUNICE WILSON  
 SUE WILSON  
 ROBERT V. WINFREE

*Second Row*

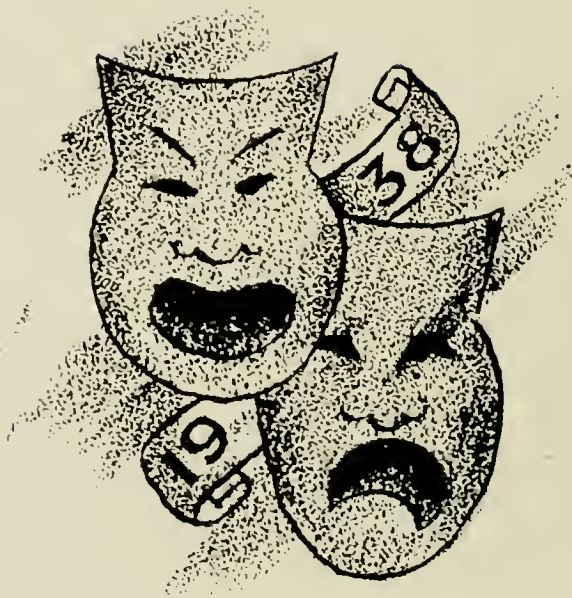
ANN WEAVER  
 LUCY WHISNANT  
 CLAUDE WHITE  
 JAMES WHITE  
 JAMES WILLIAM WHITE

*Fourth Row*

MERLE WOOLEY  
 MARY LOUISE WRENN  
 JONAS YARBROUGH  
 FRANK YODER  
 JAMES YODER  
 HARRILL YOUNG











LYSISTRATA

LYSISTRATA. Just so.  
 MYRRHINA. Will you not go back?  
 LYSISTRATA. Not I, unless you make  
 CINESIAS. Therefore if it seems good  
 I will e'en do so.  
 MYRRHINA. Therefore if it seems good  
 I will e'en return. But now I have  
 do it.  
 CINESIAS. Ah! do come home with  
 MYRRHINA. Well then, wait until  
 I beg it into his arms)  
 CINESIAS. Come now—are you ready?  
 MYRRHINA. Oh! I have forgotten my  
 business with you!  
 Oh, haste! do not delay so.  
 There, I have left behind  
 a woman never be ready  
 my jars of beauty  
 ready  
 my jars of beauty





CINESIAS

# ATHLETICS FOR MEN

# DEPARTMENT OF ATHLETICS

KIDD BREWER  
*Athletic Director*

FLUCIE STEWART  
*Assistant Athletic Director*

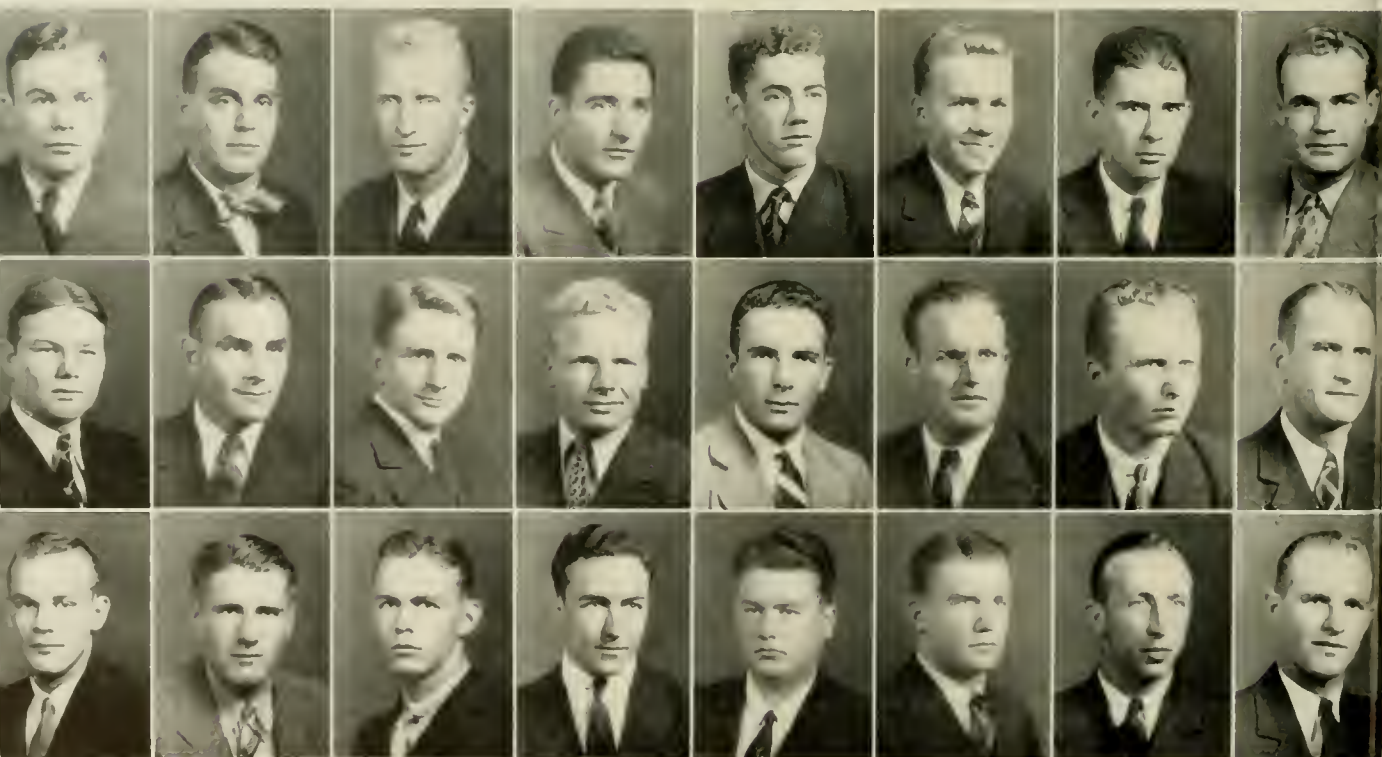
KIDD BREWER	<i>Football</i>
FLUCIE STEWART	<i>Football</i>
FOY MARTIN	<i>Football</i>
FLUCIE STEWART	<i>Basketball</i>
R. W. WATKINS	<i>Wrestling</i>
KIDD BREWER	<i>Boxing</i>
FOY MARTIN	<i>Boxing</i>
ED. RIVERS	<i>Boxing</i>
A. ANTONAKOS	<i>Swimming</i>
G. I. SAWYER	<i>Tennis</i>

## WOMEN'S ATHLETICS

MRS. WILLIAM M. MATHESON  
*Director*

MISS THURSA STEED  
*Assistant Director*

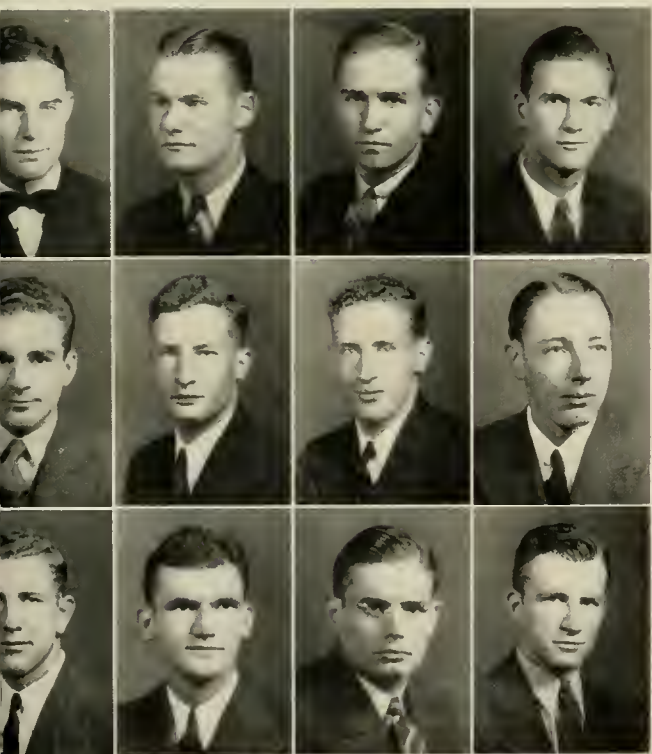
GOODMAN







# "A" CLUB



## OFFICERS

ERVIN SMITH  
*President*

ERVIN SMART  
*Vice-President*

MELVIN FAIRLEY  
*Secretary-Treasurer*

## TOP ROW

ERVIN SMART  
MELVIN FAIRLEY  
ROVIE ANGELL  
BOB BROOME  
GARNETT CLARK  
GEORGE CORN  
DAN CRANFORD  
GRIP DAUGHERTY  
HAL FARTHING  
DON GAFFNEY  
MILTON GASKILL  
A. J. GILLESPIE

## MIDDLE ROW

J. C. HAWKINS  
EARL HENSON  
PETE HORNFECK  
PHIL HUDSON  
SAM KAPLAN  
JOHN MATHEWS  
HOWARD McCANN  
JOHN MCGINNIS  
ANDRE NADEAU  
BEN NORRIS  
BILL NORRIS  
JAMES PATTERSON

## BOTTOM ROW

CECIL POE  
ELMO ROTHROCK  
ERNIE SAFRIT  
STEWART SCOTT  
RALPH SINCLAIR  
FRED SMITH  
BRENTON STINES  
KARL THORNEBURG  
ROY TURBYFILL  
L. L. WAGNER  
CHARLIE WALTERS  
CARSON WOOD

# FOOT

## *To The North State* CHAMPIONS

"Hail to the favorite sons of Appalachian, the Mountaineers, unbeaten and unscored on! Champions of the North State Conference for the first time since the exit of Daniel from the homes fires of the Blue Ridge. May their success be long, unbroken, and ever-repeating!"



BREWER  
MARTIN  
ANGELL.





# BALL

Lead by Captain Rovie Angell the Appalachian Mountaineers hung up their moleskins last fall after one of the greatest seasons of glory ever experienced by an Appalachian eleven. North State Champions for the first time in the history of the young school, winners of other outstanding conference honors, and declared to be one of the most sportsmanlike teams in the realm of football today, the Brewer-coached machine had little to wish for in the way of titles and recognition.

Playing nine games in all sorts of weather the Black and Gold team rolled up a total of 209 points against a total of none for their opposition, and the leading combination remained: Angell, Wilson, Daugherty, Henson, Smith, Turbyfill, Rothrock, Smith, Adams, and Smith. The only hazy marks in the annals of a truly great eleven were the 0-0 tie with the Carson Newman Eagles in a mire of mud on the Mountaineers' Homecoming, and the 7-0 set back at the hands of the Mississippi State Teachers College Wasps in a post-season game in Gulfport, Mississippi.

Although the Mountaineers have always been at their best as a unit the fact still remains that there were a few favored ones who were able to distinguish themselves by receiving All-Conference awards. Among the All-Conference teams chosen this year almost all of the Mountaineers received some recognition, but the outstanding glory came to Wilson, Angell, Earl Smith, Turbyfill, Fairley, Fred Smith, Irvin Smith, and Rothrock.

Leaving the 1937 edition of the Appalachian Mountaineers as published by the Coaches—Brewer, Stewart, and Martin the thoughts go to the parting warriors who have worn the moleskins for Appalachian for the last time. Next year there will be no Adams, Farthing, I. Smith, Angell, Stines, Henson, Turbyfill or Mathews. Those men have left, but the spirit of the school continues.—“*Appalachian Marches Onward! ! !*”



STEWART

*Top row, left to right: STEWART, coach; GILLESPIE, manager; BREWER, coach.*

*Fifth row: R. WILSON, RUFFIN, BRADY, ROBINSON, MANSHIP, JESSUP, SHIDAL, MALCOLM, CRAFT.*

*Fourth row: WHITLEY, GAFFNEY, HODDER, SAFRIT, EMODY, SIMMONS, CORN, HOOVER.*

*Third row: WALTERS, HUDSON, FARTHING, KAPLAN, BROOME, JOHNSON, MATHEWS.*

*Second row: POE, HORNFECK, HAWKINS, STINES, HENSON, EDWARDS, DAUGHERTY, F. SMITH.*

*First row: FAIRLEY, E. SMITH, ADAMS, ANGELL, Captain; L. WILSON, ROTHROCK, E. SMITH.*





*Angell*



*Hawkins*



*Stines*



*Adams*



*Turbyfill*



*Smith*





## RESULTS OF 1937 SEASON

A. S. T. C.	39	Cumberland	0
A. S. T. C.	14	Lenoir Rhyne	0
A. S. T. C.	0	Carson Newman	0
A. S. T. C.	28	East Tennessee	0
A. S. T. C.	31	Elon	0
A. S. T. C.	37	Tusculum	0
A. S. T. C.	14	Western Carolina	0
A. S. T. C.	37	Guilford	0
A. S. T. C.	6	Catawba	0
*A. S. T. C.	0	Miss. State Teachers	7

\* Game played December 4 in Gulfport, Mississippi for the championship of small colleges of the South.



*Henson*



*Farthing*



*Mathews*

*Gillette*



# BASKETBALL

Falling far below the record of the 1937 gridiron machine the 1937-1938 court aggregation under the tutelage of Coach Flucie Stewart landed in fifth position as the conference drew to a close early in March. The Appalachians scored 681 points to their opponents 591, and they were able to win ten while losing six and drawing one by a 30-30 score with High Point.

Red Smart, captain of the Mountaineers, lead the scoring for the second consecutive year ringing up a total of 175 points, and Hans Wagner hit the meshes for a total of 113 points. Phil Hudson, ace of the Mountaineers, only scored 65 points in the season, but was chosen as one of the guards on the All North State Team. Smart was also chosen as a forward on the second team in this loop. McGinnis, veteran of two campaigns showed up better this year than ever before as he placed third in the scoring with 98 points. The other two first stringers, Stuart and Kaplan rang up totals of 95 and 85 points respectively.

It was evident that a weakness in the ranks of the reserves was one of the outstanding reasons why Appalachian placed fifth, as the four subs scored only 51 points in seventeen games averaging less than a point per man per game. Next year only smart and Wagner will be lost to the team, but it will be a difficult assignment to fill their shoes with as efficient and hard-working players.



PLASTER



Front Row, Left to Right—HUDSON, HAGAMAN, MCGINNIS, SMART, KAPLAN, NANTZ, HOOVER; Back Row—HULL, WAGNER, T. JOHNSON, Coach STEWART, E. JOHNSON, STEWART, POWELL, GILLESPIE, Manager (not in picture.)



Top Row, Left to Right — HAGAMAN, NANTZ, MCGINNIS, WAGNER; Middle Row—KAPLAN, HOOVER, STEWART, HULL; Bottom Row—Co-Captains, HUDSON, SMART.



## RESULTS 1938

A.S.T.C. .... 56	Atlantic Christian .....	25
A.S.T.C. .... 33	High Point .....	36
A.S.T.C. .... 30	High Point .....	30
A.S.T.C. .... 32	Catawba .....	36
A.S.T.C. .... 43	Lenoir-Rhyne .....	34
A.S.T.C. .... 23	Elon .....	36
A.S.T.C. .... 53	Guilford .....	27
A.S.T.C. .... 40	Catawba .....	38
A.S.T.C. .... 29	Lenoir-Rhyne .....	35
A.S.T.C. .... 60	Guilford .....	28
A.S.T.C. .... 52	W. Carolina Teachers .....	28
A.S.T.C. .... 32	Elon .....	47
A.S.T.C. .... 37	Atlantic Christian .....	28
A.S.T.C. .... 31	W. Carolina Teachers .....	45
A.S.T.C. .... 33	Emory and Henry .....	31
A.S.T.C. .... 46	Emory and Henry .....	26
A.S.T.C. .... 51	Charlotte Y. M. C. A. ....	49

# WRESTLING



AGLE

Wrestling teams in Tennessee, Virginia, and the two Carolinas quake with fear when the name Appalachian is mentioned. It is with good cause, too, for the season just terminated marked the sixth season of intercollegiate competition for the Mountaineers, and their record stands—Appalachian 54; Opponents 3. In the past three years the Watkins'-coached club has met twenty-eight foes without damaging its undefeated record, and during the past two seasons the Appalachians have emerged from the Carolinas' A. A. U. tourney with the team title with seven, and six first places in the two years' competition.

This last edition of the Black and Gold grapplers was composed of the following lads: Parks, Gaskill, Crooks, Barnhill, Norris, Wood, Evans, Daugherty and Smith. These men fought in seven matches and upheld the honor that is Appalachians' and then went farther to come out of the struggle of the A. A. U. fighters with a record of six wins in nine bouts.

Two seniors leave the ranks to take up wrestling on a more serious scale, the opponent being Life, in the unlimited class, no holds barred. Another faithful member of the squad for four years, Pat Patterson makes his farewell, and Appalachian is sorry to see these men leave the campus. The first two mentioned were ex-Captain Jimmy Crooks, winner in every bout except one in four years, and ex-Captain Bill Norris, winner in twenty out of twenty-four matches in four years. Crooks led the Appalachians last year, and Norris was the current leader of the grapplers.

As to winning teams in this sport there is nothing left to wish for, but there is one thing that the students of this school would like to see in the near future, and that is—a few more schools who are not afraid of the local wrestlers so that these men will not have to wrestle among themselves in order to find competition.



*Left to Right, Back Row:* WILSON, HARDING, Manager, PATTERSON, BAGGETT, EMODY, COACH WATKINS, POE, ROGERSON, EDWARDS, INGRAM, Manager, CRAFT.  
*Middle Row:* NORRIS, J. WHITE, CRANFORD, SMITH, WALTERS, E. WHITE, MEACHAM.  
*Front Row:* PARKS, GASKILL, CROOKS, BARNHILL, WOOD, NORRIS, DAUGHERTY.



*J. White*

*Daugherty*



*Parkes*

*Watkins*



*Gaskill*



*Wood*

*Smith*



*Barnhill*

*E. White*



*Ingram  
Crooks*

*Evans  
Norris*



# BOXING



JONES

## BOXING SQUAD

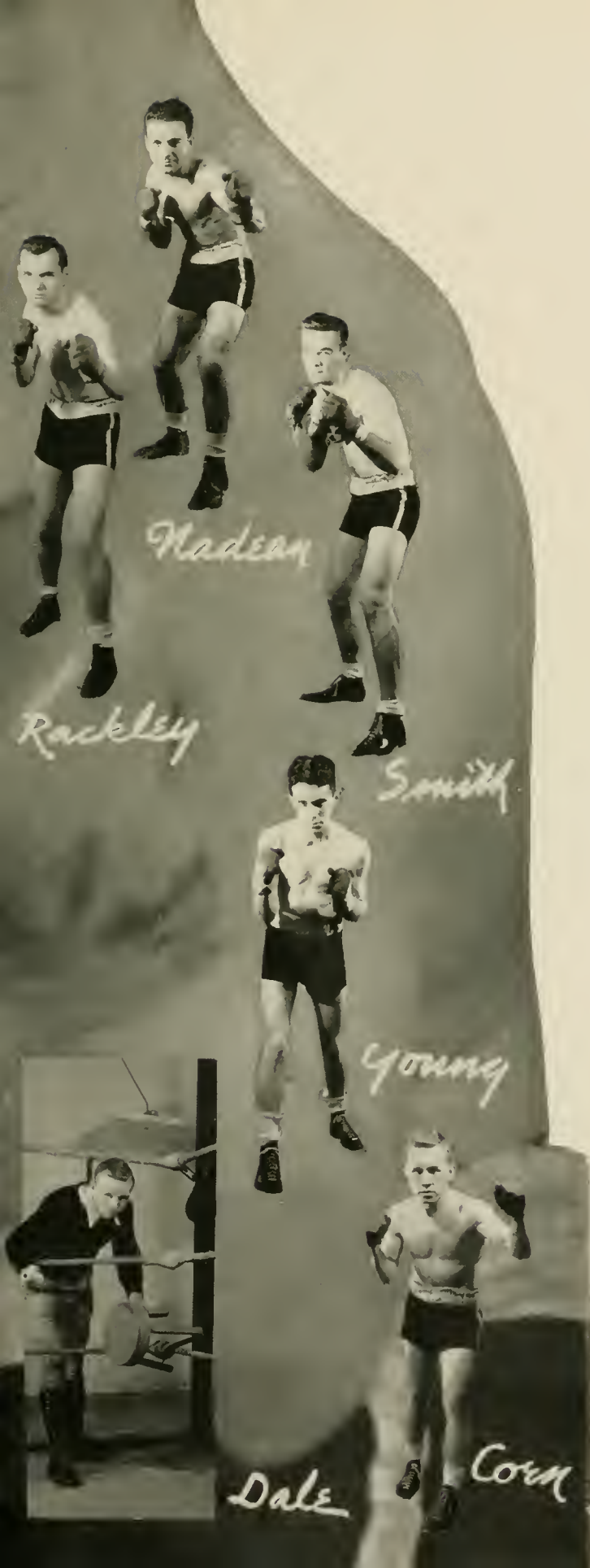
*Back Row*—WILSON, RACKLEY, CARTER, WOODRUFF, EDWARDS;  
*Middle Row* — GOOD, STINES, B. SHERRILL, LAIHAN, K. SHERRILL, HODDER;  
*Front Row* — HOLDER, MALCOLM, SMITH, CLARK, NADEAU, YOUNG.

Coach Kidd Brewer's fighting Appalachians, the famous Mountaineers noted for their brilliant Golden Gloves records, have completed another banner year in the rings of some of the outstanding pugilistic camps of the South. In the regular schedule the Mountaineers batted .500 with wins over Tennessee and N. C. State, and defeats at the hands of Duke, and Columbus U. of Washington, D. C. The Brewer-fighters presented an all-star card of eight fine pugilists who fought in this order: Young, Corn, Nadeau, Clarke, Smith, Rackley, Woodruff, and Wilson. These lads represented the varsity, and on the sidelines were Sherrill and Sherrill, Holder, Good, Edwards, Hodder, and Pharr.

As in 1936-1937, the Appalachians' greatest glory came in the Golden Gloves and A. A. U. Tournament held in the Queen City in February. Here the sons of Appalachian threw jabs and hooks as they never had thrown them before and the result was almost an All Appalachian finals. In the sixteen







final bouts there were eight Black and Gold sluggers, and the popularity that they had earned in the preliminary fights made them the favorites by a big margin. Four Mountaineers won titles, and Clarke and Corn were part of the Carolinas' contingent to the national finals in Boston in April. (Coach Kidd (Bowtie) Brewer was chosen as the coach of this outlay of leather-pushers, and thus was this fair school thrice honored by the A. A. U. officials in charge of the delegation from the two Carolinas.

### SCHEDULE

A. S. T. C.	3	Duke Univ.	5
A. S. T. C.	6	N. C. State	2
A. S. T. C.	5½	U. of Tenn.	2½
A. S. T. C.	3	Col. Univ.	5

### GOLDEN GLOVES

#### Champions:

HORACE GOOD, *Novice Lightweight*  
 JOHNNY CLARKE, *Open Welterweight*  
 DICK HODDER, *Novice Light-Heavy*  
 EARL SMITH, *Novice Middleweight*

#### Runners-Up:

LEN WILSON, *Open Heavyweight*  
 BILL EDWARDS, *Novice Heavyweight*  
 JOHN RACKLEY, *Open Light-Heavy*  
 GEORGE CORN, *Open Lightweight*

Most popular fighter of tourney elected by vote of the fans won by George Corn.

Johnny Clarke and George Corn were members of the team representing the two Carolinas in the national tourney in Boston, April 1-5.



# TENNIS

Appalachian's racquet-wielding Mountaineers came through their 1937 season with one of the best records ever set in the books at this institution as they won nine matches of twelve starts and lost the other three by only one point, all the defeats coming in a 4-3 match. Captain Karl Sawyer and John McGinnis bore the brunt of the attack as they won eleven and lost one apiece. The only clubs which outscored the Sawyer-coached team were Lenoir Rhyne, N. C. State, and Eastern Tennessee Teachers. Thorneburg, Sinclair, Sherrill, and Eamon filled out a well-balanced squad, and only Eamon and Captain Sawyer are among the missing in the 1938 campaign.

Meeting a schedule of the following games this past spring the Appalachians played all their matches on foreign soil for the first time in history. The opponents were: Elon, Catawba, Guilford, Lenoir Rhyne, E. T. T. C., and several others. The 1938 squad includes McGinnis, Thorneburg, Tucker, Sherrill, all veterans; and Stuart, Hagaman, Sherrill, Williams, and Mock freshmen aspirants to the court aggregation.

Record of the 1937 season follows:

## PERSONAL RECORD OF PLAYERS

### Singles

Karl Sawyer (Captain)	Won 10 matches	Lost 1
John McGinnis	Won 10 matches	Lost 1
Karl Thorneburg	Won 7 matches	Lost 4
Ralph Sinclair	Won 0 matches	Lost 5
Basil Sherrill	Won 6 matches	Lost 4
Floyd Eamon	Won 3 matches	Lost 5

### Doubles

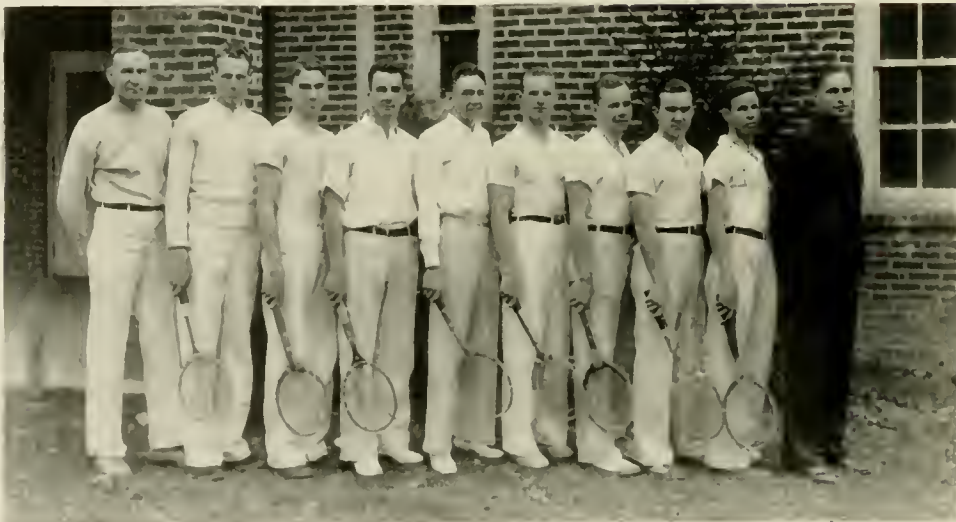
Sawyer and McGinnis	Won 9 matches	Lost 3
Thorneburg and Sinclair	Won 0 matches	Lost 4
Thorneburg and Sherrill	Won 4 matches	Lost 3

## TEAM RECORD

A.S.T.C.	3	Lenoir Rhyne	4
A.S.T.C.	6	Erskine	1
A.S.T.C.	4	Guilford	3
A.S.T.C.	3	N. C. State	4
A.S.T.C.	4	Atlantic Christian	3
A.S.T.C.	4	Milligan	3
A.S.T.C.	5	Emory and Henry	2
A.S.T.C.	5	Emory and Henry	2
A.S.T.C.	6	Carson-Newman	1
A.S.T.C.	6	Milligan	1
A.S.T.C.	2	East Tennessee	5



ANDERSON



Left to Right, G. L. SAWYER, Coach, BYRON STEWART, BILL GOOD, JOHN NESBIT, BILL MITCHELL, KARL THORNEBURG, JAMES TUCKER, WILLIAM HALYBURTON, WEAVER WADE, RAY CLINE, Manager.



MYRRHINA

ATHLETICS  
FOR WOMEN

# BASKET



MATHESON  
STEED  
RUDISILL

With no fanfare to usher them onto the scene or no band to encourage them to greater things the girls' varsity of Appalachian State Teachers College wound up a very successful season of eleven games with a total of eight wins, one tie game and two defeats at the hands of a rugged Milligan outfit. The co-eds totalled 284 points in their campaign against a record of 219 for their foes.

Margaret Rhyne, playing her second season with the Black and Gold varsity tallied 113 points to lead the sextette, and King looped the hoops for a grand total of 90. Brannon was third with 56, and the substitutes tossed in the remainder, 25. In the backcourt defending the Appalachian goal were Rudisill, Beasley, Kiser and Dixon. These four girls turned in some beautiful teamwork to hold some of the outstanding forwards of this section to the low scores that they did.

Beasley, Rudisill and Brannon will be lost by graduation this spring, but with the return of the remainder of one of the largest squads ever to grace the Appalachian court great things will be in line for the Lady Mountaineers next year.

The schedule follows:

## SCHEDULE

A. S. T. C.	31	Boiling Springs	29
A. S. T. C.	21	Milligan College	22
A. S. T. C.	30	Wingate College	8
A. S. T. C.	24	Boiling Springs	22
A. S. T. C.	32	Lenoir Rhyne	26
A. S. T. C.	24	Lenoir Rhyne	24
A. S. T. C.	17	Mitchell College	16
A. S. T. C.	17	E. C. T. C.	16
A. S. T. C.	30	Wingate College	13
A. S. T. C.	34	Mitchell College	16
A. S. T. C.	24	Milligan College	27



# BALL



FURCHES

FORMYDUVAL



GARNER

*Left to Right*—ORA SUGGS, THELMA ADAMS, ROUTH DIXON, RUBY BRANNON, GENEVA GOODMAN, JEAN BASS, EDITH RUDISILL (Captain), BLANCHE KISER, MARGARET RHYNE, CAROLE BEASLEY, VANDA WHICKER, ALLENE KING.



# Physical Education Club

*First Row, left to right:* JEAN WARWICK, MARY SUMMEY, BERNICE RALEY, ORA SUGGS, EUNICE QUINN, EDITH RUDISILL, DOROTHY HURST, LOUISE HOLLAND, CYNTHIA STILES; *Second Row:* JEAN BASS, CAROLE BEASLEY, KATHLEEN BURLESON, ROUTH DIXON, MARGARET KNOTT, VANDA WHICKER, JOHNNIE SPFAS, EUDELL FORMYDUVAL; *Third Row:* FRANCES ANDERSON, RUBY BRANNON, DONA GANTT, ELSIE LEE BRAKE, FRANCES CANIPE, EUPHA BOWMAN; *Top:* MARTHA FURCHES.

## "A" Club

*Front Row, left to right:* MARTHA FURCHES, BLANCHE KISER, RUBY BRANNON, ROUTH DIXON, MARGARET RHYNE, VANDA WHICKER; *Back Row:* ALLENE KING, EUDELL FORMYDUVAL, JEAN BASS, CAROLE BEASLEY, ORA SUGGS, EDITH RUDISILL.



HONEYCUTT





# Volley Ball

*Left to right:* ROUTH DIXON, EUNICE QUINN, BERNICE RALEY, VANDA WHICKER, MARTHA FURCHES, EUDELL FORMYDUVAL, CAROLE BEASLEY, EDITH RUDISILL, MARGARET KNOTT, ORA SUGGS.

# Hockey

*Left to right:* MARY SUMMEY, ROUTH DIXON, MARGARET KNOTT, EDITH RUDISILL, MAUDE SPEAGLE, DONA GANTT, JEAN WARWICK, BERNICE RALEY, EUDELL FORMYDUVAL, CAROLE BEASLEY, CYNTHIA STILES, MARTHA FURCHES, DAISY AUSTIN, FRANCES ANDERSON.



GIBSON







# COMMEDIA DELL'ARTE

...ed in advance. Therefore the Commedia dell'Arte was  
... not only *commedia istrionica* or *buffonesca*, but also *com-*  
*media di maschere* and *commedia all'improvviso*. Not, indeed, that  
... actors did not use literary texts, that they did not possess their  
...ts of the theatre (and sometimes they were themselves authors),  
...at they did not command, together with collections of scenarios or  
...plots, repertories of monologues and of dialogues on the most  
...ried subjects to learn by heart and speak in the appropriate places.  
...at this, which may be called the literary part of the  
...rformances, as words to be used in certain situations,  
...is the mimicry of the

And thus  
...ly an



...mpare with  
Dottore appears  
...uminous drooping hat has preceded his  
...se restless, waving, clutching, great hat  
...irely disarranging the clothes of that ill-clad  
...l throwing it into wild disorder. That unfortunate  
...lect of his, so ridiculous to other Italian ears, only  
...t gesticulating loquacity, so entirely beside the  
...iciously boring in its pompous misplaced erudition. That  
...ntalone, too, is an owlish mask who makes one laugh  
...en one







FINOCCHIO

# SOCIETIES



# THALIAN LITERARY SOCIETY

## FALL QUARTER

MARGARET EURY AGLE  
 ORA SUGGS  
 ROUTH DIXON  
 PAULINE BUNCH  
 CATHERINE STYERS  
 VIRGINIA HOLLAND  
 LOUISE CRESS  
 RUTH EPPS  
 RUTH SUGGS

*President*  
*Vice-President*  
*Recording Secretary*  
*Corresponding Secretary*  
*Treasurer*  
*Chaplain*  
*Censor*  
*Chorister*  
*Doorkeeper*

## WINTER QUARTER

VIRGINIA HOLLAND  
 LOUISE LEONARD  
 MARY LOU DEDMON  
 VIVIAN HOLLOWAY  
 MARTHA HARRILL  
 MABON DYE  
 GLADYS TERRY  
 EUNICE QUINN  
 LUCY LITTLE  
 RUTH EPPS  
 MARGARET EURY AGLE

*President*  
*Vice-President*  
*Recording Secretary*  
*Corresponding Secretary*  
*Treasurer*  
*Chaplain*  
*Critic*  
*Censor*  
*Chorister*  
*Pianist*  
*Doorkeeper*

## SPRING QUARTER

ORA SUGGS  
 DOROTHY HERMAN  
 RUTH EPPS  
 CATHERINE STYERS  
 GLADYS MCCURDY  
 LUCY LITTLE  
 PAULINE BUNCH  
 MARGARET RHYNE  
 LOUISE CRESS  
 VISTA LAWSON  
 VIRGINIA HOLLAND

*President*  
*Vice-President*  
*Recording Secretary*  
*Corresponding Secretary*  
*Treasurer*  
*Chaplain*  
*Critic*  
*Censor*  
*Chorister*  
*Pianist*  
*Doorkeeper*

RHODODENDRON





## THALIAN LITERARY SOCIETY

THELMA ADAMS  
 JENNIE SUE ALLEN  
 DIXIE ALLRED  
 SARAH LEIGH ARMFIELD  
 LULA ATKINS  
 DOROTHY ATKINSON  
 LUCILLE BAKER  
 ELSIE BARNETTE  
 MARY JANE BEAM  
 ANNIE BEARD  
 ELIZABETH BENBOW  
 FAYE BLUE  
 BETTY BOSTIC  
 EUPHA BOWMAN  
 ELSIE LEE BRAKE  
 WILMA BRIDGES  
 BEULAH BRYANT  
 PAULINE BUNCH  
 EDITH BURLESON  
 ANNIE LAURA BURTON  
 FRANCES CANIPE  
 LAURA CARSON  
 MADGE CARTER  
 RUTH CAUDILL  
 MARGARET COLLIER  
 ANNA LENA COOPER  
 ANNA BELLE COUNCIL  
 HAZEL CRAFT  
 LOUISE CRESS  
 ROSALIE DEARMIN  
 MARY LOU DEDMON  
 HAZEL DIXON

ROUTH DIXON  
 GRETCHEN DUNCAN  
 MABON DYE  
 STELLA DYE  
 MINNIE EDWARDS  
 LOWELL ELLIS  
 MARGARET ENGLISH  
 RUTH EPPS  
 MARGARET EURY AGLE  
 LOUISE FISHER  
 GLADWYN GABRIEL  
 DONA GANTT  
 MARTHA GARNER  
 LOUISE GRAYSON  
 MARTHA HARRILL  
 MILDRED HARRILL  
 JOY HARRIS  
 MARY LILLIAN HAYNES  
 ELIZABETH HEADE  
 DELLMA HENSLEY  
 DOROTHY HERMAN  
 VIRGINIA HOLLAND  
 EDNA HOLLOWAY  
 VIVIAN HOLLOWAY  
 MARY HOOVER ASHLEY  
 EVA JONES HOPKINS  
 LOUISE HUDGINS  
 MARY HUDGINS  
 MAXINE HUGHES  
 CATHERINE IRVIN  
 RUTH JOHNSON  
 HELEN JONAS

CLEO JONES  
 ELIZABETH JONES  
 RUBY KILPATRICK  
 ALINE KING  
 GLADYS KING  
 FRANCES LATHAN  
 VISTA LAWSON  
 JANE LEFLER  
 LOUISE LEONARD  
 LUCY LITTLE  
 MILDRED LITTLE  
 LUCILLE LOPP  
 REBECCA MABE  
 LUCIENNE MASSEY  
 ETHEL MACANN  
 MARY MCCOLLUM  
 GLADYS MCCURDY  
 MARY MCCURRY  
 ELLEN MCFALL  
 RETA MCLAMB  
 DAISY LEE MEACHUM  
 MARY LOUISE MELVIN  
 BETTY MODLIN  
 ANNE MOORE  
 MARTHA MONTEITH  
 M. ELIZABETH MONTEITH  
 CHARLOTTE PARKER  
 EDNA PARKER  
 VIRGINIA PARRISH  
 JENNIE PEEBLES  
 LOIS PEELER  
 HAZEL PLASTER

KATHLEEN POINDEXTER  
 CLARA HUNTER PORTER  
 EUNICE QUINN  
 GERALDINE REDDING  
 MARGARET RHYNE  
 MARTHA RITCHIE  
 KATIE JEAN ROWE  
 BEATRICE SATTERWHITE  
 GERALDINE SETZER  
 LOIS SIDES  
 HELEN SMITH  
 MARY JANE SNOW  
 JOHNNIE SPEAS  
 MARTHA STONESTREET  
 CATHERINE STYERS  
 ORA SUGGS  
 RUTH SUGGS  
 AMY TALBERT  
 STELLA TATE  
 GLADYS TERRY  
 LOLA THOMAS  
 BLANCHE TOWNSEND  
 EUGENIA VERNON  
 ELIZABETH VON CANNON  
 MARGARET VOSS  
 CATHERINE WARD  
 JEAN WARWICK  
 RUTH WATTS  
 ETHEL WHISNANT  
 LUCY WHISNANT  
 RENA WHITE  
 BERNICE WHITESIDES







McSWAIN



SINCLAIR



SALE

# DYNICIAN LITERARY SOCIETY

## OFFICERS

### FALL QUARTER

NELL MCSWAIN	<i>President</i>
NELL CURTIS	<i>Vice-President</i>
IRMA GABRIEL	<i>Secretary</i>
CHRISTINE EDENS	<i>Treasurer</i>
LOUISE JONES	<i>Critic</i>
PAULINE WEBB	<i>Censor</i>
MARGARET WRAY	<i>Chaplain</i>
FRANCES BODENHAMER	<i>Pianist</i>
DAISY WILLIAMS	<i>Chorister</i>

### WINTER QUARTER

ELIZABETH SINCLAIR	<i>President</i>
MAVIS SMITH	<i>Vice-President</i>
JOSEPHINE ROBINSON	<i>Secretary</i>
EDITH RUDISILL	<i>Treasurer</i>
NITA BRIDGES	<i>Critic</i>
ANN JONES	<i>Censor</i>
FAY SALE	<i>Chaplain</i>
SARA PERKINS	<i>Pianist</i>
MARTHA FURCHES	<i>Chorister</i>

### SPRING QUARTER

FAY SALE	<i>President</i>	MARGARET WRAY	<i>Censor</i>
FLORENCE HUGHES	<i>Vice-President</i>	HELEN YODER	<i>Chaplain</i>
LOUISE JONES	<i>Secretary</i>	MARTHA FURCHES	<i>Pianist</i>
AZILE BURNS	<i>Treasurer</i>	LOUISE SMITH	<i>Chorister</i>
RUTH SPOON	<i>Critic</i>		



# RHODODENDRON





## VERNICIAN LITERARY SOCIETY

### OFFICERS

#### FALL QUARTER

HELEN HOLT *President*  
 RUTH ERVIN *Vice-President*  
 THELMA BEAM *Recording Secretary*  
 MYRTLE NANCE *Corresponding Secretary*  
 JESSIE SIFFORD *Treasurer*  
 GERTRUDE GRAYBEAL *Chaplain*  
 DOROTHY STACY *Critic*  
 LUCILLE ICARD *Censor*  
 HESSIE JAYNES *Chorister*

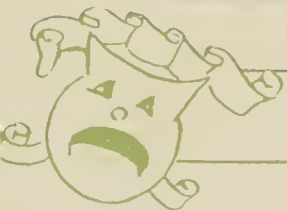
#### WINTER QUARTER

ELIZABETH LUTTERLOH *President*  
 MYRTLE NANCE *Vice-President*  
 HELEN HOLT *Recording Secretary*  
 DOROTHY STACY *Corresponding Secretary*  
 ETTA MILLS *Treasurer*  
 LOIS STARNES *Chaplain*  
 HELEN MCNEELY *Critic*  
 MARY BOST *Censor*  
 PEARL YORK *Chorister*

#### SPRING QUARTER

MYRTLE NANCE *President*  
 AGNES RHYNE *Vice-President*  
 JESSIE SIFFORD *Recording Secretary*  
 LOIS STARNES *Corresponding Secretary*  
 CATHERINE MILLS *Treasurer*

LUCILLE ICARD *Chaplain*  
 MABEL KLUTZ *Critic*  
 EDITH WALKER *Censor*  
 HELEN MCNEELY *Chorister*



1938



BEAM



LOGAN



HARTLEY

# PHILA RETIAN SOCIETY

## OFFICERS

### FALL QUARTER

VIRGINIA BEAM	<i>President</i>
MABEL RHYNE	<i>Vice-President</i>
RUTH BEAVER	<i>Secretary</i>
ODESSA PARKS	<i>Treasurer</i>
JEAN BASS	<i>Critic</i>
PANSY TALENT	<i>Censor</i>
BETTY JANE MILLER	<i>Chaplain</i>
LUCILLE HARTLEY	<i>Chorister</i>
HILDA EAKER	<i>Faculty Representative</i>

### WINTER QUARTER

JANE LOGAN	<i>President</i>
REBECCA MAYE WARDEN	<i>Vice-President</i>
JEAN BASS	<i>Secretary</i>
LUCILLE HARTLEY	<i>Treasurer</i>
DOROTHY HURST	<i>Critic</i>
MADGE GAMBILL	<i>Censor</i>
VIRGINIA SMITH	<i>Chorister</i>
DELIA DOUGLAS	<i>Pianist</i>
MARGARET LACKFY	<i>Faculty Representative</i>

### SPRING QUARTER

LUCILLE HARTLEY	<i>President</i>	DELIA DOUGLAS	<i>Censor</i>
EVELYN BLACKWELL	<i>Vice-President</i>	FAYE MESSICK	<i>Chaplain</i>
HILDA EAKER	<i>Secretary</i>	LILLIAN LINNEY	<i>Chorister</i>
MABEL RHYNE	<i>Treasurer</i>	KATE STROUPE	<i>Pianist</i>
SARAH JARRETT	<i>Critic</i>	VIRGINIA BEAM	<i>Faculty Representative</i>



# RHODODENDRON







GOODMAN

R. STALEY

# ALPHA SIGMA GAMMA

## OFFICERS

### FALL QUARTER

HOWARD GOODMAN *President*  
 ROSCOE STALEY *Vice-President*  
 GLENN PERRY *Secretary*  
 CLIFFORD LONG *Treasurer*

### WINTER QUARTER

ROSCOE STALEY *President*  
 ROBERT EDWARDS *Vice-President*  
 GRADY TYREE *Secretary*  
 CLIFFORD LONG *Treasurer*

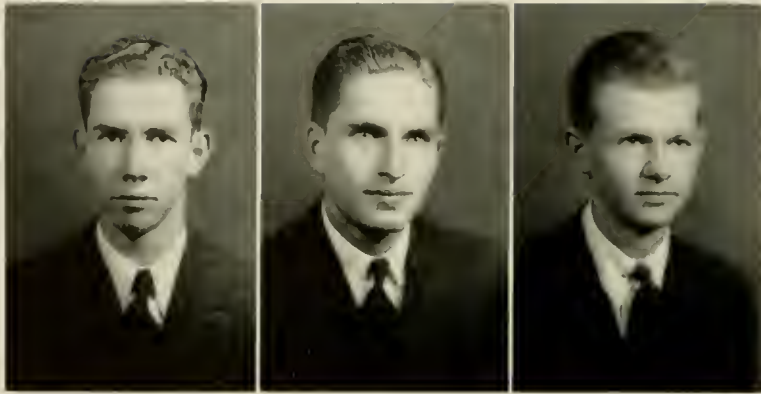
### SPRING QUARTER

J. W. HUNEYCUTT *President*  
 WILLIAM GOOD *Vice-President*  
 MARTIN COLE *Secretary*  
 CLIFFORD LONG *Treasurer*

ROLL: Eugene Allison, David Black, Martin Cole, William Cole, Culver Dale, Kyle Dickson, Robert Edwards, Ernest Ervin, Harlon Gilliam, Horace Good, William Good, Howard Goodman, Banard Harris, J. W. Huneycutt, Kenneth Johnson, Howard Kimel, Paul Kovacevich, Allan Lathan, Clifford Long, William Mitchell, Dermont Moore, Jack Morton, Glenn Perry, Richard Peterson, Ray Sills, Starr Stacy, Roscoe Staley, W. T. Staley, Gannon Talbert, Grady Tyree, Weaver Wade, Carson Wood.



1938



SUTHERLAND

CLINE

GRAYBEAL

# ALPHA LAMBDA SIGMA

## OFFICERS

### FALL QUARTER

GWYN SUTHERLAND *President*  
 JAMES PATTERSON *Vice-President*  
 RAY COON *Secretary-Treasurer*

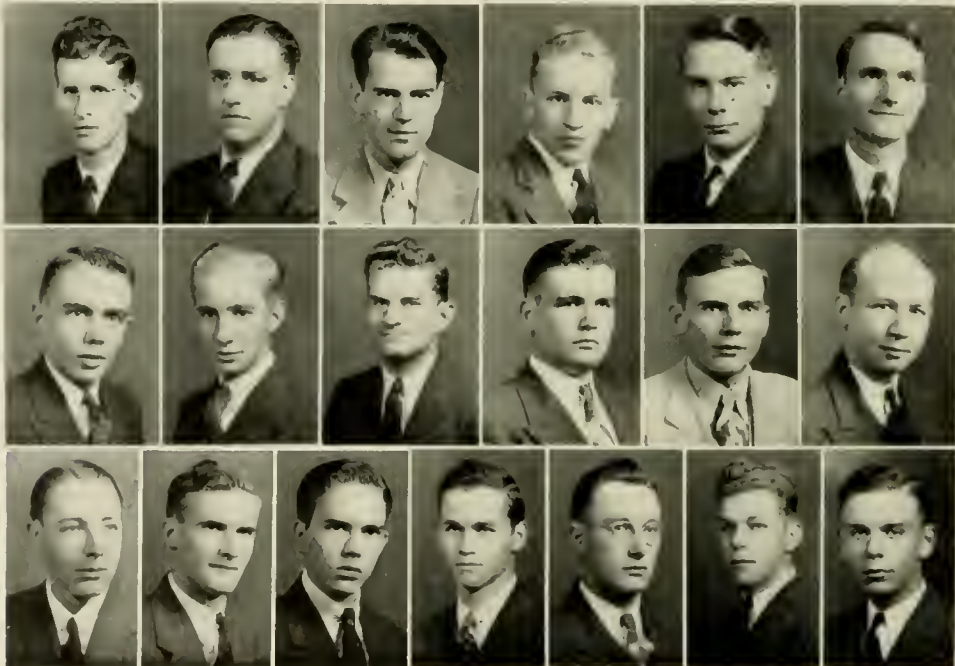
### WINTER QUARTER

RAY CLINE *President*  
 IVAN PEARSON *Vice-President*  
 GOLDEN BUCKLAND *Secretary-Treasurer*

### SPRING QUARTER

THOMAS GRAYBEAL *President*  
 BANKS HEAFNER *Vice-President*  
 L. C. MAPLES *Secretary-Treasurer*

ROLL: Golden Buckland, Roscoe Buckland, Keith Carpenter, Wayne Church, Ray Coon, Wheeler Farthing, Paul Green, Sherrill Gregory, Banks Heafner, Craig Hull, Raymond Johnson, L. C. Maples, James Patterson, Ivan Pearson, Tom Price, Culos Settle, Campbell Stewart, Dwayne Thompson, Frank Yoder.



# RHODODENDRON





SMART



MURDOCH



NEAL

# DELTA PHI SIGMA

## OFFICERS

### FALL QUARTER

ERVIN SMART	<i>President</i>
BERNARD MURDOCH	<i>Vice-President</i>
GEORGE POWELL	<i>Secretary-Treasurer</i>

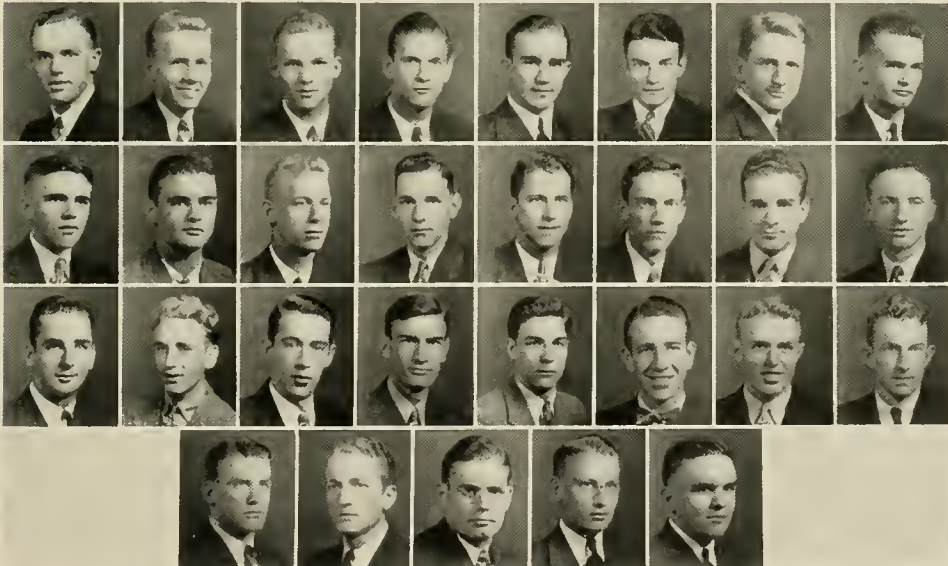
### WINTER QUARTER

BERNARD MURDOCH	<i>President</i>
FRED SMITH	<i>Vice-President</i>
FRANK CRAYTON	<i>Secretary-Treasurer</i>

### SPRING QUARTER

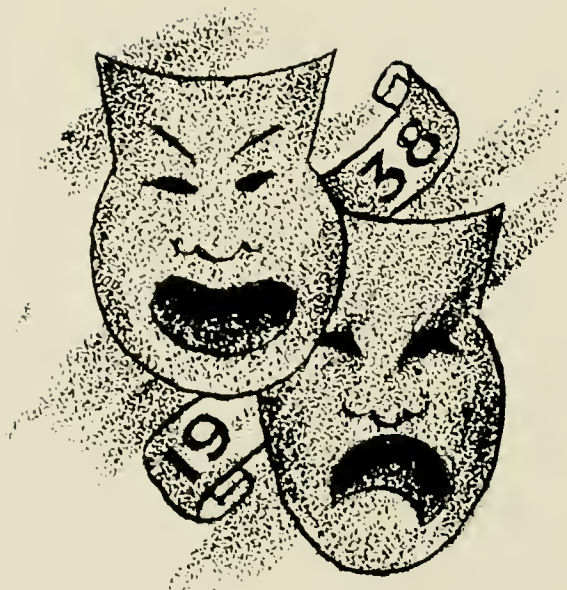
ALGERNON NEAL	<i>President</i>
ELMER SINCLAIR	<i>Vice-President</i>
RAYMOND BRADY	<i>Secretary-Treasurer</i>

ROLL: Brady, Corn, Crayton, Gillespie, Halliburton, Hampton, Hornfeck, Hull, Ingram, Jessup, E. Johnson, T. Johnson, Meacham, Miller, Nadeau, Nantz, Nesbit, Parks, Poteat, Powell, Robertson, Roberts, Shidal, Sinclair, Smith, Wall, Walters, White, Yoder.



1938







DOTTORE

# CLUBS

# INTERNATIONAL RELATIONS CLUB



## OFFICERS

DWAYNE THOMPSON  
*President*

BERNARD MURDOCH  
*Vice-President*

RUTH EPPS  
*Recording Secretary*

LUCY LITTLE  
*Corresponding Secretary*

JACK GIBBS  
*Treasurer*

DR. D. J. WHITENER  
*Sponsor*

## ROLL

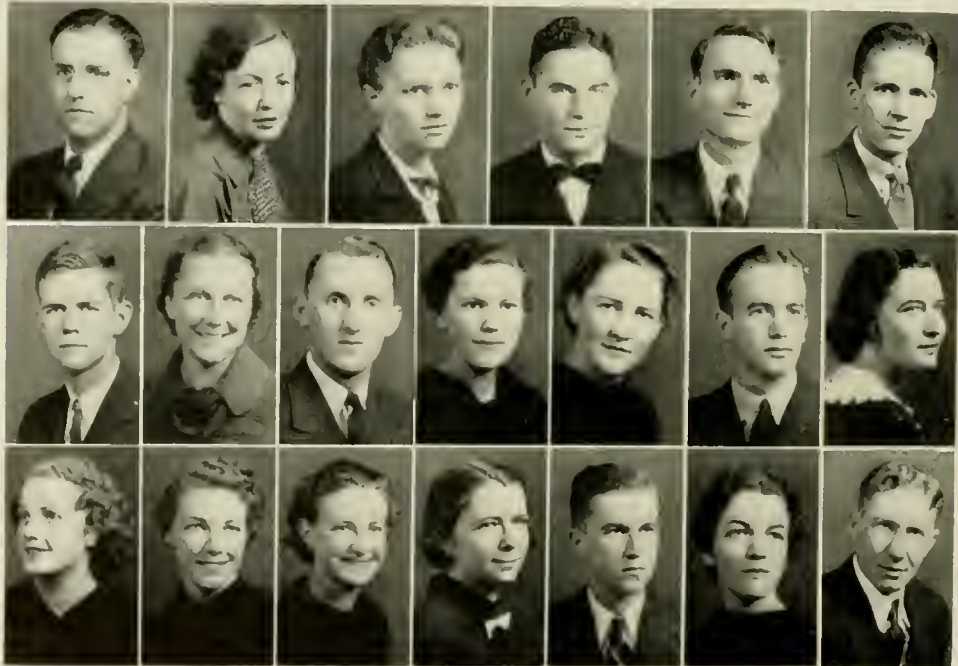
ROSCOE BUCKLAND  
VIVIAN CARICO  
MABON DYE  
HAL FARTHING

WHEELER FARTHING  
DWIGHT GRUBBS  
STANLEY HARRIS  
LOUISE LEONARD

EDWARD LOVE  
JENNIE MARTIN  
NELL McSWAIN  
HERMAN OWENS

JOSEPHINE ROBINSON  
RUTH SPOON  
ORA SUGGS  
RUTH SUGGS

EDITH WALKER  
JAMES WALL  
DAISY WILLIAMS  
J. OLIVER YOUNG




---

# RHODODENDRON

---





# NATIONAL ECONOMICS CLUB



## OFFICERS—*First Half of Year*

WHEELER FARTHING  
*President*

MARGARET WRAY  
*Vice-President*

VANDA WHICKER  
*Secretary-Treasurer*

DWAYNE THOMPSON  
*Representative*

## OFFICERS—*Second Half of Year*

JAMES WALL  
*President*

NELL MCSWAIN  
*Vice-President*

ORA SUGGS  
*Secretary-Treasurer*

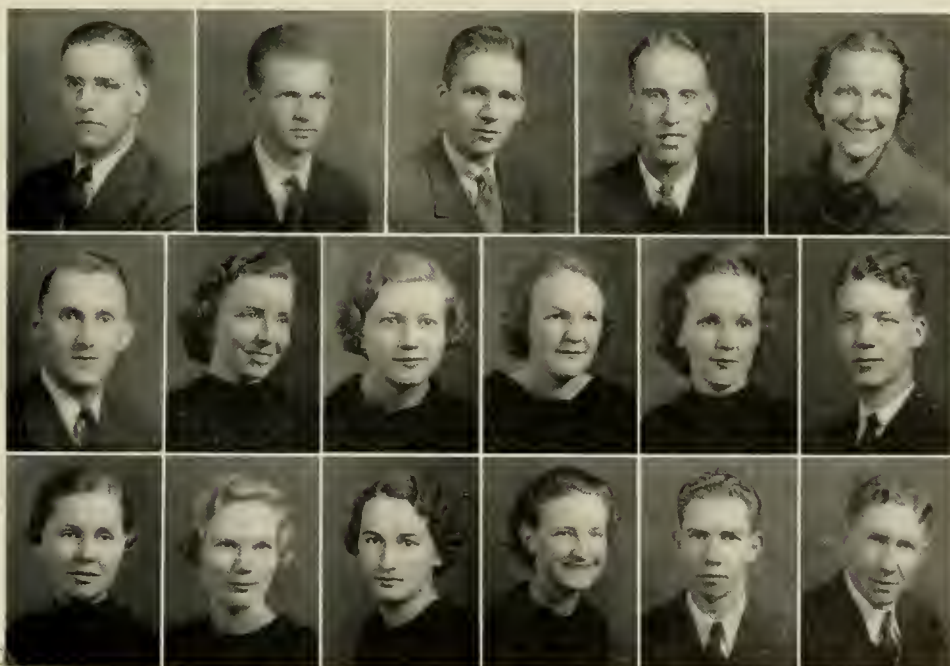
HOWARD KIMEL  
*Representative*

W. M. GRUBBS  
*Sponsor*

ROSCOE BUCKLAND  
THOMAS GRAYBEAL  
DWIGHT GRUBBS  
KENNETH JOHNSON  
LOUISE LEONARD  
EDWARD LOVE

ROLL  
FAY MESSICK  
ELIZABETH MILLER  
MARY HELEN MODLIN  
ANNIE MAE MOORE  
BERNARD MURDOCH

LOIS PEELER  
FAY SALE  
LOUISE SMITH  
RUTH SUGGS  
GWYNN SUTHERLAND  
J. OLIVER YOUNG



1938



# FORENSICS

RANKIN, WHITENER, *Debate Coaches*

WOLFE, BURNS, *Oratory*

OFFICERS—*Fall Quarter*

DWAYNE THOMPSON, *President*

MARGARET LACKEY, *Vice-President*

JENNIE MARTIN, *Secretary*

ELIZABETH SINCLAIR, *Treasurer*

IVAN PEARSON, *Reporter*

OFFICERS—*Winter Quarter*

JENNIE MARTIN, *President*

JAMES WALL, *Vice-President*

MARGARET LACKEY, *Secretary*

KATHLEEN ANDERSON, *Treasurer*

OFFICERS—*Spring Quarter*

IVAN PEARSON, *President*

GRADY TYREE, *Vice-President*

MARGARET LACKEY, *Secretary*

HOWARD KIMEL, *Treasurer*

The Appalachian State Teachers College conducts an Intercollegiate Forensic and Speech Department. We have membership in the North State Intercollegiate Forensic Society. The Smoky Mountain Forensic Tournament for Men. The Smoky Mountain Forensic Tournament for Women. The Dixie Forensic Tournament, The Southeastern Speech Tournament, and The South Atlantic Forensic Tournament. In addition, our Forensic Club and our International Relations Club, under the sponsorship of the college, carry on The Appalachian Mountain Forensic Tournament.

During the year we have engaged in the following intercollegiate activities: sixty debates, five oratorical contests, seven impromptues, seven extempores, and two direct-clash debates.

All told, we have taken first honors in:

Women's Oratory—one; Impromptu Speaking—one; Speaking to a hostile audience—one; After Dinner Speaking—one; Stimulating group discussion—one; Debating—one.

SECOND HONORS IN: Women's Oratory—two; Men's Oratory—one; Impromptu Speaking—one; After Dinner Speaking—two.

ORATORS: (First honors), Daisy Williams; (Second honors), Lillian Linney, Kyle Dickson, James Wall.

DEBATERS: (First honors), Jennie Martin, Catherine Mills (2), James Wall, Oliver Young; (Second honors), Jennie Martin, Margaret Lackey.

OTHER DEBATERS: Aileen Scism, Dwayne Thompson, Margaret Wilson, Cleo Jones, Howard Kimel, Jerome Huneycutt, HESSIE JAYNES.

---

## RHODODENDRON

---





## FORENSIC CLUB ROLL

### OFFICERS

THOMPSON

MARTIN

PEARSON

### MEMBERS

ALLISON  
ANDERSON  
BOSTIC  
CARSON  
CHURCH  
CRESS  
DALE  
DICKSON  
ERVIN

GILLIAM  
GRUBBS  
HARRILL  
HUNEYCUTT  
JAYNES  
JONES, C.  
JONES, E.  
KIMEL  
LACKEY

LINNEY  
MILLER  
MILLS  
MONTEITH  
MURDOCH  
PEEBLES  
REDMOND  
SCISM  
SINCLAIR

SMART  
TALENT  
TYREE  
WALL, E.  
WALL, J.  
WILLIAMS  
WILSON  
YOUNG



. 1938 .





# Y. W. C. A. CABINET

## OFFICERS

DAISY WILLIAMS ..... *President*  
 EUDELL FORMYDUVAL..... *Vice-President*  
 LUCY LITTLE ..... *Secretary*  
 GLADYS TERRY ..... *Treasurer*  
 LUCILLE HARTLEY..... *Program Chairman*  
 DORIS BANDY..... *Social Service Chairman*  
 NELL McSWAIN ..... *Social Chairman*  
 VIVIAN HOLLOWAY..... *World Fellowship Chm.*  
 CYNTHIA STILES ..... *Publicity Chairman*  
 MARGARET AGLE ..... *Chorister*  
 MARTHA FURCHES ..... *Pianist*  
 ORA SUGGS ..... *Reporter*

## MEMBERS

SALLIE GREEN ALLISON  
 FRANKIE ANDERSON  
 DOROTHY ARMSTRONG  
 GENEVA ARMSTRONG  
 DORIS BANDY  
 ANNETTE BLANTON  
 LEAFYBELLE BLANTON  
 KATHRYN BRACEY  
 ELSIE LEE BRAKE  
 NETA BRIDGES  
 BEULAH BRYANT  
 AZILE BURNS  
 MADGE CARTER  
 MARY COLLINS  
 LOUISE COMER  
 MARGARET COWLES  
 NELL CURTIS  
 KATHLEEN DAY  
 DIANA DeLAPP  
 MAURICE DOBBINS  
 CHRISTINE EDENS  
 MINNIE EDWARDS  
 LOWELL ELLIS  
 RUTH EPPS  
 RUTH ERVIN  
 LOUISE FISHER

MARTHA FURCHES  
 DONA GANTT  
 MARTHA GARNER  
 LOUISE GRAYSON  
 ZENNA HALSEY  
 MARTHA HARRILL  
 JOY HARRIS  
 LUCILLE HARTLEY  
 ROSALYN HARTSELL  
 DELMA HENSLEY  
 LOUISE HOLLAND  
 VIRGINIA HOLLAND  
 CAROLYN HUDSON  
 SARAH JARRETT  
 LOUISE JOHNSON  
 ANN JONES  
 CLEO JONES  
 ELIZABETH JONES  
 LOUISE JONES  
 LUCY LITTLE  
 MILDRED LITTLE  
 JANE LOGAN  
 LUCILLE LOPP  
 MARGARET MANN  
 ETHEL McCANN  
 GLADYS McCURDY

MARY BOYCE MCGILL  
 NELL McSWAIN  
 FAY MESSICK  
 ELIZABETH MILLER  
 ANNA LEE MILLS  
 CATHERINE MILLS  
 BETTY MODLIN  
 MARY HELEN MODLIN  
 MARTHA MONTIETH  
 MARY ELIZABETH MONTIETH  
 MARY FRANCES MOSS  
 MYRTLE NANCE  
 VIRGINIA NELSON  
 CHARLOTTE PARKER  
 ODESSA PARKS  
 VIRGINIA PARRISH  
 SARAH PERKINS  
 HAZEL PLASTER  
 KATHLEEN POINDEXTER  
 CLARA HUNTER PORTER  
 ELIZABETH PUTMAN  
 HATTIE PEGRAM  
 AGNES RHYNE  
 MARGARET RHYNE  
 MARTHA RITCHIE  
 KATIE JEAN ROWE

FAYE SALE  
 ELIZABETH SINCLAIR  
 LOUISE SMITH  
 VIRGINIA SMITH  
 JOHNNIE SPEAS  
 RUTH SPOON  
 CYNTHIA STILES  
 CATHERINE STYERS  
 PANSY TALENT  
 GLADYS TERRY  
 SARAH LEE THOMAS  
 LUCILLE UPTON  
 MARGARET VOSS  
 JEAN WARWICK  
 RUTH WATTS  
 PAULINE WEBB  
 VANDA WHICKER  
 RENA WHITE  
 DAISY WILLIAMS  
 MARGARET WILSON  
 NELL WILSON  
 MARGARET WRAY  
 CLARA WRIGHT  
 HELEN YOOER  
 EVELYN YOUNG

---

# RHODODENDRON

---



# Y. M. C. A.

## OFFICERS—Fall Quarter

WHEELER FARTHING  
*President*  
GWYN SUTHERLAND  
*Vice-President*  
ROBERT EDWARDS  
*Secretary-Treasurer*  
ROSCOE BUCKLAND  
*Chaplain*  
THOMAS GRAYBEAL  
*Reporter*



FARTHING

BUCKLAND

GRAYBEAL

## OFFICERS—Winter Quarter

ROSCOE BUCKLAND  
*President*  
THOMAS GRAYBEAL  
*Vice-President*  
BANKS HEAFNER  
*Secretary-Treasurer*  
L. C. MAPLES  
*Chaplain*

## OFFICERS—Spring Quarter

THOMAS GRAYBEAL  
*President*  
HAROLD RUMMAGE  
*Vice-President*  
L. C. MAPLES  
*Secretary-Treasurer*  
ROBERT EDWARDS  
*Chaplain*  
WHEELER FARTHING  
*Critic*  
EDWARD MEACHAM  
*Reporter*

## MEMBERS

EUGENE ALLISON  
GOLDEN BUCKLAND  
ROSCOE BUCKLAND  
WAYNE CHURCH  
KYLE DICKSON  
ROBERT EDWARDS  
WHEELER FARTHING  
HARLON GILLIAM

HOWARD GOODMAN  
THOMAS GRAYBEAL  
BANKS HEAFNER  
JEROME HUNEYCUTT  
J. W. HUNEYCUTT  
ALLAN LATHAN  
CLIFFORD LONG  
EDWARD LOVE

L. C. MAPLES  
EDWARD MEACHAM  
JAMES PATTERSON  
HAROLD RUMMAGE  
CAMPBELL STEWART  
GWYN SUTHERLAND  
GRADY TYREE  
OLIVER YOUNG



1938

# NEW DORMITORY CLUB

## OFFICERS—First Half of Year

ELIZABETH SINCLAIR *President*  
 NELL CURTIS *Vice-President*  
 NELL MCSWAIN *Secretary*

## OFFICERS—Second Half of Year

MABEL RHYNE *President*  
 FAY SALE *Vice-President*  
 NELL CURTIS *Secretary*

## MEMBERS

MARGARET AGLE  
 KATHALEEN ANDERSON  
 HAZEL AUSTIN  
 DORIS BANDY  
 JEAN BASS  
 CAROLE BEASLEY  
 RUTH BEAVER  
 ALMA BECK  
 ELIZABETH BENBOW  
 EVELYN BLACKWELL  
 GLAOKS BLAKELEY  
 LEAFYELLE BLANTON  
 FRANCES BODENHAMER  
 MYRLE BOLICK  
 EUPHA BOWMAN  
 ELSIE LEE BRAKE  
 BEULAH BRYANT  
 PAULINE BUNCH  
 HAZEL CRAFT  
 NELL CURTIS  
 WALLINE DECK  
 MARY LOU DEDMON  
 DIANA LYNN DELAPP  
 JUANITA DICKERSON  
 GRETCHEN DUNCAN  
 RUTH EPPS  
 RUTH ERVIN  
 LOUISE FISHER  
 EUELL FORMYDUVAL  
 BEULAH FUNDERBURK  
 MARTHA FURCHES

IRMA GABRIEL  
 MADGE GAMBRILL  
 LOUISE GRAYSON  
 MARTHA HARRILL  
 LUCILLE HARTLEY  
 ROSALYN HARTSELL  
 ELIZABETH HEADE  
 DOROTHY HERMAN  
 VIRGINIA HOLLAND  
 EVA JONES HOPKINS  
 LOUISE HUDGINS  
 MARY HUDGINS  
 CAROLYN HUDSON  
 FLORENCE HUGHES  
 DOROTHY HURST  
 KATHERINE ERWIN  
 SARAH JARRETT  
 LOUISE JOHNSON  
 ANN JONES  
 LOUISE JONES  
 MARY RUTH JONES  
 NINA JONES  
 AILENE KING  
 BLANCHIE KISER  
 MARGARET KNOTT  
 MARGARET LACKEY  
 FRANCES LATHAN  
 LOUISE LEONARD  
 LILLIAN LINNEY  
 LUCY LITTLE

ELIZABETH LUTTERLOH  
 REBECCA MABE  
 JENNIE MARTIN  
 ANNETTE MCCLURE  
 GLADYS MCCURDY  
 MARY MCCURRY  
 ETHEL MCDADE  
 GENEVA MCMANUS  
 EDNA MCMILLAN  
 NELL MCSWAIN  
 DAISY LEE MEACHAM  
 FAYE MESSICK  
 BETTY JANE MILLER  
 LORRAINE MILLER  
 ETTA MILLS  
 BETTY MODLIN  
 MARY HELEN MODLIN  
 ANNIE MAE MOORE  
 FAYE MOORE  
 MYRTLE NANCE  
 ELIZABETH PALMER  
 ODESSA PARKS  
 VIRGINIA PARRISH  
 LOIS PEELER  
 SARAH PERKINS  
 FLORA PITTMAN  
 HAZEL PLASTER  
 PAULINE POPE  
 EUNICE QUINN  
 DEMA REEVES

MARTHA RITCHIE  
 JOSEPHINE ROBINSON  
 FAY SALE  
 GERALDINE SEIZER  
 LOUISE SHOAF  
 ELIZABETH SINCLAIR  
 LOUISE SMITH  
 MAVIS SMITH  
 VIRGINIA SMITH  
 RUTH SPOON  
 LOIS STARNES  
 MARTHA STONESTREET  
 KATHLEEN STOUT  
 KATE STROUPE  
 MYRTLE STROUPE  
 CATHERINE STYERS  
 ORA SUGGS  
 PANSY TALENT  
 STELLA TATE  
 HAZEL TAYLOR  
 MILDRED TAYLOR  
 GLADYS TERRY  
 LOLA THOMAS  
 EUGENIA VERNON  
 REBECCA MAY WARDEN  
 VANDA WHICKER  
 ETHEL WHISNANT  
 RENA WHITE  
 LOUISE WILKINSON  
 MARGARET WRAY  
 CLARA WRIGHT




---

RHODODENDRON

---





# LOVILL CLUB

## OFFICERS—First Half of Year

HELEN MCNEELY *President*  
 JEAN BUCHANAN *Vice-President*  
 HELEN HOLT *Secretary*

## OFFICERS—Second Half of Year

MYRTLE NORTON *President*  
 AGNES RHYNE *Vice-President*  
 SARAH HALL *Secretary*

## MEMBERS

THELMA ADAMS  
 JENNIE SUE ALLEN  
 CHRISTINE ANTHONY  
 DOROTHY ATKINSON  
 ELSIE BARNETTE  
 MARY GENE BEAM  
 MARY FRANCES BECKNER  
 HAZELENE BLAKE  
 ANNETTE BLANTON  
 MARY BOST  
 BETTY BOSTIC  
 ELOISE BOYCE  
 NETA BRIDGES  
 ARLEE BROYHILL  
 ELOISE BRYANT  
 JEAN BUCHANAN  
 EDITH BURLESON  
 KATHERINE BURLESON  
 ANNIE MAE BURTON  
 MARGARET CABANISS  
 MARTHA CARROLL  
 LAURA CARSON  
 MADGE CARTER  
 MARGARET COLLIER  
 MARY COLLINS  
 ALICE COOKE  
 MARGARET COWLES  
 BERTHA CROUSE

MARY DAVIS  
 KATHLEEN DAY  
 DOROTHY DEAL  
 THELMA DODD  
 MABON DYE  
 STELLA DYE  
 MILDRED EARLE  
 LOWELL ELLIS  
 MARGARET ENGLISH  
 DONA GANTT  
 GENEVA GOODMAN  
 GERTRUDE GRAYBEAL  
 ALDA GREENE  
 SARAH HALL  
 ZENNA HALSEY  
 LOUISE HAYES  
 LENA HEAVNER  
 EDNA HOLLOWAY  
 HELEN HOLT  
 GWENDOLYN HUNT  
 LUCILLE ICARD  
 HESSIE JAYNES  
 RUTH JOHNSON  
 CLEO JONES  
 ELIZABETH JONES  
 GLADYS KING  
 MABEL KLUTZ

JANE LEFLER  
 MILDRED LITTLE  
 JANE LOGAN  
 LISETTE MARTIN  
 VIRGINIA MCCALL  
 MARGARET MCCOLLUM  
 MARY MCCOLLUM  
 LOUISE MCCREADY  
 HELEN McDONALD  
 HELEN MCNEELY  
 MARY LOU MELVIN  
 PAULINE MICHAEL  
 EVELYN MILLER  
 CATHERINE MILLS  
 ELIZABETH MILLS  
 ANN MOORE  
 MRS. ILA DEAL MORROW  
 MYRTLE NORTON  
 ELIZABETH PARSONS  
 HATTIE PEGRAM  
 ROSA LEE PENDRY  
 RACHEL PERKINS  
 IRENE PHILLIPS  
 JOSIEPHYNE PIERCE  
 FAYE POOVEY  
 BERNICE RALEY  
 AGNES RHYNE

EDITH ROBERTS  
 KATIE JEAN ROWE  
 PHOEBE LOU SHIRLEY  
 EDNA SMITH  
 NANCY RUTH SMITH  
 PEARLE SMITH  
 RUTH SMITH  
 ELOISE STROUPE  
 BONNIE SWARINGEN  
 ROSE SWOFFORD  
 AMY JANE TALBERT  
 SARAH LEE THOMAS  
 NAOMI TRANTHAM  
 LUCILLE UPTON  
 ELIZABETH VAUGHN  
 LOREE VENABLE  
 MARGARET WATTS  
 RUTH WATTS  
 LUCY WHISNANT  
 BERNICE WHITESIDES  
 DAISY MORRIS WILSON  
 EUNICE WILSON  
 NELL WILSON  
 MERLE WOOLEY  
 HELEN YODER  
 PEARL YORK  
 GRACE YOUNG  
 VIRGINIA YOUNT



• 1938 •

# LE CERCLE FRANCAIS

OFFICERS—Cynthia Stiles, *President*; Robert Edwards, *Vice-President*; Josephine Robinson, *Secretary*; Clifford Long, *Treasurer*; Virginia Beam, *Reporter*.

ROLL: Agle, Allen, Anderson, Bass, Beam, Canipe, Carico, Caudill, Collier, Collins, Council, Dickerson, Dickson, Dobbins, Douglas, Duncan, Edwards, English, Epps, Ervin, Farthing, Frye, Good, Gragg, Greene, Hartley, Hensley, Holland, Holt, Jones, Knott, Leonard, Little, Long, Lowe, Massey, McFall, McKinney, Melvin, E. Miller, F. Miller, Nadeau, Norton, Owens, Raley, Reader, Redding, Ritchie, Robinson, Shoaf, Simpson, Stanley, Stiles, Stuart, Teague, Vance, Venable, Walker, Whicker, Wilkerson, Williams.



# HOME ECONOMICS CLUB

OFFICERS: FALL QUARTER—Pauline Bunch, *President*; Ruth Beaver, *Vice-President*; Virginia Holland, *Secretary*; Christine Edens, *Treasurer*; Virginia Beam, *Critic*.

WINTER QUARTER—Virginia Smith, *President*; Mildred Taylor, *Vice-President*; Ruth Beaver, *Secretary*; Nina Jones, *Treasurer*; Christine Edens, *Critic*.

SPRING QUARTER—Pansy Talent, *President*; Virginia Beam, *Vice-President*; Carolyn Price, *Secretary*; Virginia Holland, *Treasurer*; Delia Douglas, *Critic*.

ROLL: Adams, Beam, Beard, Beaver, Bunch, Cooke, D. Douglas, M. Douglas, Edens, Fisher, Halsey, Holland, Jones, King, Lynn, Mast, Neal, Palmer, Parks, Price, Reader, Smith, Talent, Taylor, Templeton, Webb, Wilson, York.



---

# RHODODENDRON

---



# JUNIOR MINISTERIAL ALLIANCE

OFFICERS—First Half of Year

ROSCOE BUCKLAND	<i>President</i>
VIVIAN HOLLOWAY	<i>Vice-President</i>
EDNA HOLLOWAY	<i>Secretary</i>
GERTRUDE GRAYBEAL	<i>Treasurer</i>

OFFICERS—Second Half of Year

GLADYS TERRY	<i>President</i>
KENNETH JOHNSON	<i>Vice-President</i>
GENEVA ARMSTRONG	<i>Secretary</i>
SALLIE GREENE ALLISON	<i>Treasurer</i>



# WHITE HALL CLUB

OFFICERS—First Half of Year

MARGARET RHYNE	<i>President</i>
RUTH SUGGS	<i>Vice-President</i>
MARGARET MANN	<i>Secretary</i>

OFFICERS—Second Half of Year

MARTHA GARNER	<i>President</i>
FRANKIE ANDERSON	<i>Vice-President</i>
RUBY KILPATRICK	<i>Secretary</i>



1938



# B. S. U.

## OFFICERS

Lucille Hartley, *President*; Vivian Holloway, *First Vice-President*; Eudell Formyduval, *Second Vice-President*; Pansy Talent, *Third Vice-President*; Louise Johnson, *Recording Secretary*; Odessa Parks, *Corresponding Secretary*; J. C. Hawkins, *Treasurer*; Gladys Terry, Gaye Miller, *B. T. U. Representatives*; Martha Harrill, Elmer Sinclair, Ervin Smart, Zenna Halsey, Sylvia Page, Algernon Neal, *Sunday School Representatives*; Reid Laney, Lola Thomas, *Reporters*; Annette Blanton, *Chorister*.



# B. T. U.

## OFFICERS

Gladys Terry, *Director*; Martha Harrill, *Assistant Director*; Louise Johnson, *Devotional Leader*; Mary McCollum, *General Secretary*; Martha Furches, *Pianist*; Gertrude Graybeal, Vivian Holloway, Pansy Talent, *Presidents of Unions*.



---

RHODODENDRON

---



# SCOUTS

ROSCOE BUCKLAND  
*Neighborhood Commissioner*

E. E. GARBEE  
*Scoutmaster*

THOMAS GRAYBEAL  
*Assistant Scoutmaster*



BUCKLAND

GARBEE

GRAYBEAL

*Troop Committee:*

WILEY SMITH, *Chairman*  
A. R. SMITH  
G. L. SAWYER

DAN CRANFORD  
*Troop Scribe*

BANKS HEAFNER  
*Troop Treasurer*

## ROLL

GOLDEN BUCKLAND  
ROSCOE BUCKLAND  
WAYNE CHURCH  
DAN CRANFORD

THOMAS GRAYBEAL  
BANKS HEAFNER  
JEROME HUNEYCUTT  
BEN NORRIS

JAMES PATTERSON  
RICHARD PETERSON  
CAMPBELL STEWART  
LEE WEST



1938



# GLEE CLUB

## OFFICERS

HOWARD GOODMAN  
*President*

DAISY WILLIAMS  
*Vice-President*

RUTH EPPS  
*Secretary*

LUCILLE HARTLEY  
*Treasurer*

MISS VIRGINIA WARY  
*Director*

MARTHA FURCHES  
*Pianist*

*Sopranos.* Lillian Abrams, Annette Blanton, Evelyn Brown, Lalla Clay, Louise Cress, Martha Garner, Hessie Jaynes, Lucy Little, Daisy Williams.

*Tenors:* Wayne Church, John Elam, Leonard Eury, Blaine Gibbs, Jack Gibbs, J. C. Hawkins, T. B. Huneycutt, Glenn Trout, C. L. Williams.

*Altos:* Margaret Agle, Ruth Epps, Helen Gragg, Lucille Hartley, Kate Stroupe, Porter Stiles, Eugenia Vernon, Ethel Whisnant.

*Basses:* David Black, Edwin Carter, Howard Goodman, Jerome Huneycutt, Robert Spratt, Eccles Wall, Charles Wright, Frank Yoder.




---

# RHODODENDRON

---







"H. M. S. PINAFORE"

. 1938 .





# PLAYCRAFTERS

## OFFICERS

ANTONIOS ANTONAKOS  
 KATHERINE HARWELL  
 LUCILLE HARTLEY  
 KYLE DICKSON  
 DOROTHY HERMAN

*Director*  
*Assistant Director*  
*President*  
*Vice-President*  
*Secretary-Treasurer*

## APPRENTICES

THELMA ADAMS  
 LUCILLE ALLEY  
 DOROTHY ARMSTRONG  
 LOUISE ARMSTRONG  
 MARY HOOVER ASHLEY  
 DOROTHY ATKINSON  
 DORIS BANDY  
 ELSIE BARNETTE  
 ANNE BEARD  
 FRANCES BECKNER  
 ELIZABETH BENDOW  
 ALFRED BEST  
 EVELYN BLACKWELL  
 ANNETTE BLANTON  
 MARY BOST  
 BETTY BOSTIC  
 KATHERINE BRACY  
 ELSIE LEE BRAKE  
 NETA BRIDGES  
 VIRGINIA BRYANT  
 GOLDEN BUCKLAND  
 KAY BURLESON  
 FRANCES CANIPE  
 VIRGINIA CLAY  
 ANNA BELLE COFFEY  
 MARGARET COWLES  
 FRANK CRAYTON  
 KATHLEEN DAY  
 MARY LOU DEDMON  
 MAURICE DOBBINS  
 MELVIN DAUGHTRIDGE  
 GRETCHEN DUNCAN  
 STELLA DYE  
 MINNIE EDWARDS

LOUISE FISHER  
 DONA GANTT  
 HORACE GOOD  
 THOMAS GRAYREAL  
 DWIGHT GRUBBS  
 MARTHA HARRILL  
 JOY HARRIS  
 BRUCE HARRISON  
 FRANCES HERMAN  
 VIRGINIA HOLLAND  
 EDNA HOLLOWAY  
 LUCILLE ICARD  
 CLEO JONES  
 ELIZABETH JONES  
 LOUISE JONES  
 WILMA LEE LACKEY  
 LOUISE LEONARD  
 LILLIAN LINNEY  
 IDELL LOUDER  
 ELIZABETH LUTTERLOH  
 ETHEL MCCANN  
 ETHEL MCDADE  
 ELLEN MCFALL  
 EDNA McMILLAN  
 BETTY JANE MILLER  
 EVELYN MILLER  
 GAYE MILLER  
 ELIZABETH MILLS  
 WARREN MITCHELL  
 MARY HELEN MOOLIN  
 KATHERINE MORRIS  
 VIRGINIA MORRIS  
 ILA DEAL MORROW

ALGERNON NEAL  
 ELIZABETH NEAL  
 ODESSA PARKS  
 FLORA PITTMAN  
 ROSE PLEASANT  
 PAULINE POPE  
 THELMA POTEAT  
 BERNICE RALEY  
 MABEL RHYNE  
 MARTHA RITCHIE  
 ALLEEN ROBBINS  
 EDITH ROBERTS  
 WAGNER ROBERTS  
 ELMER SINCLAIR  
 LUCY SLADE  
 RUTH SMITH  
 VIRGINIA SMITH  
 RUTH SPOON  
 LOIS STARNES  
 PORTER STILES  
 CATHERINE STYERS  
 RUTH SUGGS  
 GWYN SUTHERLAND  
 GLADYS TERRY  
 LUCILLE UPTON  
 EDITH WALKER  
 ECCLES WALL  
 JAMES WALL  
 RENA WHITE  
 LOUISE WILLIAMS  
 MEREL WOOLEY  
 PEARL YORK  
 GRACE YOUNG

## CRAFTSMEN

BEULAH BRYANT  
 JACKIE CARICO  
 WAYNE CHURCH  
 LALLA CLAY  
 LOUISE CRESS  
 NELL CURTIS  
 RUTH ERVIN  
 BLAINE GIBBS

JACK GIRRS  
 BILL GOOD  
 HOWARD GOODMAN  
 JEROME HUNEYCUTT  
 T. B. HUNEYCUTT  
 MARGARET LACKEY  
 CLIFFORD LONG

DAISY LEE MEACHAM  
 MYRTLE NANCE  
 ARTHUR PHARR  
 PAULINE POPE  
 MABEL RHYNE  
 FAY SALE  
 RUTH SPOON  
 VANDA WHICKER

## MASTER CRAFTSMEN CANDIDATES

VIRGINIA BEAM  
 LAURA CARSON  
 RUTH EPPS  
 HARLON GILLIAM  
 LUCILLE HARTLEY

ANNARETH JONES  
 LUCILLE LOPP  
 JENNIE MARTIN  
 NELL MCSWAIN  
 ELIZABETH MILLER  
 BERNARD MURDOCH

JAMES PATTERSON  
 IVAN PEARSON  
 ELIZABETH SINCLAIR  
 DAISY WILLIAMS  
 MARGARET WRAY

## MASTER CRAFTSMEN

KATHALEEN ANDERSON  
 KYLE DICKSON  
 DOROTHY HERMAN

LUCY LITTLE



ANTONIOS ANTONAKOS  
*Director*









# SYMPHONY ORCHESTRA

GORDON NASH, *Director*

*Violins:*

JACK GIBBS  
LUCY LITTLE  
CYNTHIA STILES  
VISTA LAWSON  
ANNA LENA COOPER  
CLARA PORTER  
MARY E. DOUGLAS  
CHARLOTTE PARKER

*Cello:*

SARAH LEIGH ARMFIELD

*Piano:*

WARREN MITCHELL

*Trumpets:*

BOB ELLIOTT  
HARVEY TAYLOR  
CHARLES WALTERS

*Baritone:*

BERNARD MURDOCH

*Clarinets:*

FRED MOORF  
BLAINE GIBBS  
ROBERT SPRATT

*Bass:*

JOHN ELAM

*Drums:*

WENDALL WILSON  
MARTHA FURCHES





PANTALONE

PUBLICATIONS



W. J. ...



W. J. ...



W. J. ...



W. J. ...



W. J. ...



W. J. ...

W. J. ...

W. J. ...

W. J. ...



Don't Miss the Appalachian-Cumberland Game Today

# The Appalachian

Published Each Week by Students of Appalachian State

THE BUILDINGS  
IN THE DOUGLASS  
MOUNTAINERS

Cast Chose  
To Be Giv  
B

Cast Y

Chuck 7

Basketball  
Artist Will  
Appear Here In  
P

Jack Taylor, widely known  
sports authority, to give  
demonstrations here  
11 A.M. WILL BE SHOWN  
HERE AT 11:00 A.M.

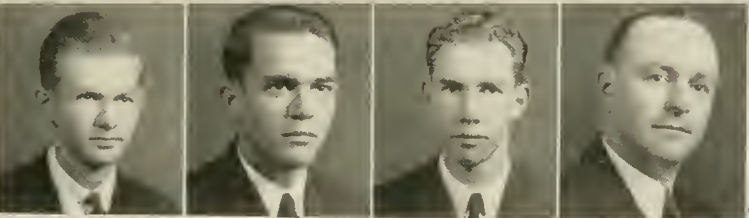
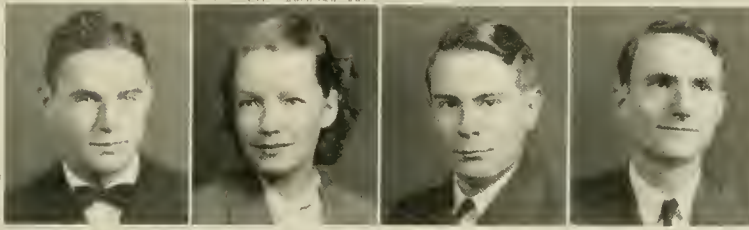
Spring

CLASSES OF SPRING  
TERM TO BE MET  
WEDNESDAY

Operetta,

OVER SEVEN HUNDRED  
REGISTERED FOR  
SPRING TERM

Revision Of  
For Stude  
Made For Sp



ection

DOUBTAINERS.  
IT'S TAKE THE  
HIGH POINTERS

PRICE 5 CENTS A COPY  
AMPUS ELECTION  
OF SUPERLATIVES  
TO END SATURDAY

Twelve Day Students Nominating For Five Posts in Annual Ballot

Titles

One From  
an Warriors  
CAGEMEN CONQUER  
LAFRA COLLEGE  
EIGHT HUNDRED  
ENROLLED HERE

Late Registrations Are Expected  
to Boost Total For Spring  
Quartermen

orning

MARGARET EURY  
BRIDE OF AGLE

Wedding Solemnized Saturday  
at Methodist Church; Rev.  
Townsend Officiates

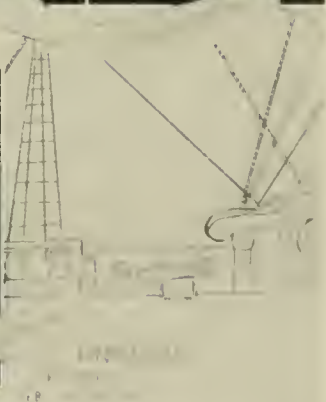
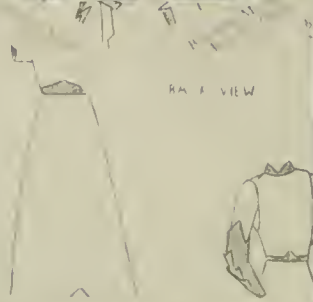
In a ceremony characterized by  
quiet charm and simplicity Miss  
Margaret Eury of Boone City, and  
Robert Eberhart Agle of Boone and  
Albion, were married last Saturday  
at the Boone Methodist church  
pastor Paul Townsend read the vows  
using the progressive ring ceremony.  
The bride gave a bride in a white  
TO  
L. D. HERSH  
L. E. HEND

achian  
ourney  
tudents

A. COACHES  
HIGHLY PRAISED  
FOR EFFICIENCY

Further Progress Is Planned By  
Members of the Faculty and  
of Study

BRIDE OF LAST WEEK  
In Eng...  
Creek Is Strou...  
SCHOOLS ENTER






ATRE

THEATRE

THEATRE

ANTIPORT BROWN  
MILLS  
JAMES BARTON  
TOBACCO ROAD

FOR A NEW LEAFY  
**Mount Vernon**  
ESTD 1804 AT LEAST 4 YEARS OLD  
THE WORLD'S BEST  
MOUNT VERNON TOBACCO CO.  
MOUNT VERNON, VA.



SMYMORE

YES  
NA



*Miss  
Daisy  
Williams*

MAY QUEEN



*Hazel Plaster*  
MAID OF HONOR



SENIOR ATTENDANTS

*Virginia Nelson*

*Louise Johnson*

*Nell McSwain*

ATTENDANTS  
*Lillian Linney*  
*Christine Edens*  
*Annette Blanton*







*Martha Garner  
Louise Grayson*

*Katie Jean Rowe  
Joy Harris*





JEETER LESTER

# SUPERLATIVES





*Mavis Smith*

*Miss Appalachian*



*Ervin Smart*

*Mr. Appalachian*



*Dwayne Thompson*

*Most Valuable Man*





*Lucille Hartley*

*Most Valuable Woman*



*Ann Jones*

*Most Popular*



ADA LESTER

# SPONSORS





*Mrs. W. B. Gibbs*



JACK GIBBS  
*Editor, THE RHODODENDRON*



*Miss Jeanne Elliott*

BOB ELLIOTT  
*Business Manager, THE RHODODENDRON*





*Mrs. Cline Farthing*



HAL FARTHING  
*Editor, The Appalachian*





*Mrs. D. C. Coon*



RAY COON  
*Business Manager, The Appalachian*



*Miss Louise York*

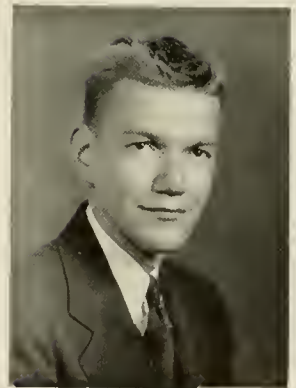


ARTHUR PHARR  
*Editor, The Playbill*



*Miss Doris Bailey*

BLAINE GIBBS  
*Business Manager, The Playbill*





*Mrs. Mildred W. Thompson*



DWAYNE THOMPSON  
*President, The Senior Class*





*Mrs. John Lindsay*

WILLIAM LINDSAY  
*President, The Junior Class*





*Miss Louise Cress*



DWIGHT GRUBBS  
*President, The Sophomore Class*



*Miss Louise Leonard*

LAWRENCE HORNFECK  
*President, The Freshman Class*



# SENIOR SUPERLATIVES



VIRGINIA BEAM  
*Cutest Girl*

RAY CLINE  
*Best Looking Boy*

LUCY LITTLE  
*Most Talented*

ROSCOE BUCKLAND  
*Most Likely to Succeed*

MARGARET WRAY  
*Most Dependable*

JACK GIBBS  
*Most Cultured Man*

VIRGINIA HOLLAND  
*Most Cultured Woman*

BOB ELLIOTT  
*Most Friendly Man*

VANDA WHICKER  
*Most Friendly Woman*

FRIEDDIE MOORE  
*Greatest Lover (Man)*

SARAH LEIGH ARMFIELD  
*Greatest Lover (Woman)*

JOHN MATHEWS  
*Best Groomed Man*

CATHERINE STYERS  
*Best Dressed Woman*

DWAYNE THOMPSON  
*Most Influential Man*

LUCILLE HARTLEY  
*Most Influential Woman*

ROVIE ANGELL  
*Best Athlete (Man)*

EDITH RUDISILL  
*Best Athlete (Woman)*

MYRLE BOLICK  
*Campus Wit*



# LIFE



BEAUX AND ERRORS

SPRING 1938 **10** CENTS

RHODODENDRON SPECIAL

# COMMENCEMENT 1937



## Pastime Theatre



*"The Place of  
Good Shows"*

*Compliments of*

## Boone Drug Co.

*The Rexall Store*

Phone 17

G. K. MOOSE, *Mgr.*

## Carolina Pharmacy

*The Drug Store of Service  
and Reliability*

Prescriptions

We Deliver — Phone 47

BOONE, N. C.

*Compliments*

## JERRY WILSON'S BARBER SHOP



JERRY WILSON, *Prop.*  
GIVE US A TRY

## SANITARY BARBER SHOP



Under Carolina Pharmacy  
*"It Pays to Look Well"*  
JOE CRAWFORD, *Mgr.*

## CARO-JEAN COFFEE SHOP

Room and Meals at  
Reasonable Rates

Tourists Invited

MRS. L. D. LOWE, *Mgr.*

# A. S. T. C. BOOK STORE



*"Student Headquarters"*

Soft Drinks

College Seal Jewelry and Pennants

## W. W. Mac Co.

(Formerly Johnson-Stuart 5 & 10c Store)

Opposite Boone Drug Co.

Serving A. S. T. C. Students for 8 Years

Boone's Favorite Dime Store

*Compliments of*

## Spainhours Inc.

*Boone's Shopping Center*

Quality Merchandise always at the lowest possible price

STUDENTS ALWAYS WELCOME

## LIFE SELECTS

Appalachian's No. 1 Couple; Honors for Industry; "Yanks"; Couple 99, and number 2; A helpless goat, eh, with so much bull.





*Compliments*

**LOVELY LADY  
BEAUTY SALON**



OLIVE TRIPPLETT, *Mgr.*  
(Over W. W. Mac 5 & 10c  
Store)

**SCHRAFFT'S  
CHOCOLATES**

The Nation's Leading Candies And A Complete Line  
School Supplies and Materials

Distributed by

**MORGAN BROTHERS, INC.**

Wholesale and Distributors  
67 Broadway ASHEVILLE, N. C.

We welcome the students to  
Boone. Make our bank your  
bank while here.

**The  
Northwestern  
Bank**

BOONE, N. C.

**Congratulations, Seniors!**

May it be easy for you to find your place in the  
world and we wish you prosperity and happiness.

**Pet Dairy Products Company**

JOHNSON CITY, TENN.

**TERRY'S**

Quality peanut butter sand-  
wich, peanuts and  
potato chips

B. L. TERRY CO.  
1611 West State Street  
Phone 1751 Bristol, Va.

*Compliments of*

**NOLAND COMPANY, INC.**

WINSTON-SALEM, N. C.



**HOMECOMING 1937**



"H. M. S. PINAFORE"



**A & P Food Stores**

*Compliments*

+

T. M. DUNKLEY, *Mgr.*

**DANIEL BOONE HOTEL**

*"In the heart of the mountains of the Blue Ridge Parkway"*

Elevation 3333

J. B. McCOY, Manager  
BOONE, N. C.

*Congratulations Seniors*

**H. W. McMACKIN**

+

Representing

**Smith-Higgins**

JOHNSON CITY, TENN.

**EAST TENNESSEE**

AND

**WESTERN NORTH CAROLINA**

**RAILROAD COMPANY**

**Carolina Cafe and  
Hotel**

●

*Boone's Finest*  
**SPECIAL DINNERS**

**REINS-STURDIVANT**

*Funeral Directors*

BOONE, N. C.  
PHONE 24  
AMBULANCE SERVICE

NORTH WILKESBORO  
SPARTA  
WEST JEFFERSON  
BOONE

# BELK - WHITE CO.

*We Sell it for Less*

BOONE, N. C.

## WALKER'S JEWELRY STORE

Watches, Diamonds, Rings,  
and School Supplies

Appalachian State Teachers  
College  
Students Always Welcome

## LANDIS TIRE CO.

Wholesale    Retail

Tires - Parts - Accessories  
Distributor of Puro Products  
Goodyear Tires

Phone 28    BOONE, N. C.

## Boone Trail Cafe

*Grade A*

+

Students Always Welcome

## HODGES TIRE CO.

Wholesale — Retail

Tires Retreading  
Vulcanizing — And Oils  
BOONE, N. C.

## JOE TODD'S ESSO SERVICE

Complete One Stop Service

Main Street

Phone 9105    BOONE, N. C.

## LIFE SALUTES:

Prof. Antonios Antonakos, the designer and executor of the theme used in the 1938 RHO-DODENDRON.

Bill Mitchell, the "detail man" of The Observer Printing House, and Harry Curlee, the "super proofer" deluxe.

M. F. Dunbar, candidly, a flatterer of feminine physiognomy.

# FLOTSAM AND JETSAM



*Compliments*

**Watauga Building and  
Loan Ass'n.**

W. H. GRAGG, *Sec.-Treas.*

*"Save the Building and  
Loan Way"*



*Compliments*

**Daniel Boone  
Shoe Shop**



*Compliments of*

**SMITHEY'S STORE**

*"Great Bargain Givers"*

BOONE, N. C.

*Compliments*

**MULLINS GROCERY  
CO.**

*"Boone's Independent  
Grocery Store"*

*Let Us Equip You With Your Needs*

Stokers  
Furnaces  
Metal Kitchens  
*Venetian Blinds*

Air Conditioning  
Tile Tex Flooring  
Weather Stripping

**JOHN B. STEELE, Dealer**  
HICKORY, NORTH CAROLINA



*Compliments*

**Watauga  
Democrat**



**THE LANCASTER CO.**

MECHANICAL EQUIPMENT - ARCHITECTURAL  
SPECIALTIES - ENGINEERING - SALES - SERVICE  
DISTRIBUTORS

Johnson City, Tennessee

**WICK'S CORNER:**

Born: Hiddenite, North Carolina.

Record: Farmer, Democrat,  
Lochinvar, Publicist.

Present Status: Afuedin' with  
Miriam Glover.

*"Conquering Catawba"*



# Life Goes to a Party

In the following series of pictures you will see a photographic record of the annual Halloween festival held on the Appalachian campus. The scene here gives you an idea of what the photographer found when he invaded the gymnasium around 8:30. The costuming and the brilliant music of the Caro Lomes gave indescribable color to the party, not to mention the antics displayed by the majority of the party-goers, which even evoked laughter and comments from the faculty.



*Compliments of*

**PUGH & HUTCHEN'S  
MOTORS, INC.**

*Ford Sales and Service*

BOONE, N. C.

## APPALACHIAN SUMMER SCHOOL

College Credit—Certificate Renewal and Raising



FIRST TERM—June 17 to July 16

SECOND TERM—July 19 to August 26



**New River Light and Power Co.**

BOONE, NORTH CAROLINA



**KIDD BREWER'S  
CAFE**

*"Headquarters For All  
Athletic Teams"*

BOONE, N. C.





**IN THE BOYS' DORMITORY**

1. The photographer invaded the boy dormitory just thirty minutes before the party began. Here the one "Red" Gilliam, potential political big-wig, was surprised. Note the clock reads 7:27.

2. Ray Sills looks on while "strangler" Crooks puts the gloss on his Sunday best. Sidelines-observe the fine curtain, also the hole in the toe of the right sock-a touch of Americanism.

3. Fred Putnam submits to the eye-brow pencil, administered by his boudoir huddy, Milton Gaskill. Gaskill possesses an artistic hand much feared in the 125-lb. wrestling division.

4. These boys struck up a pose for the camera. That's "Hamlet" Huneycutt acting maliciously toward Russell McCollum while Allan Lathan throws out his chest for Will Kincaid. Kincaid, however, didn't appear at the party in this costume.

5. This picture was snapped up on third floor of Justice Hall in Joe White's room. Joe wears the femme outfit. Note the picture of Mae West in the left background, also the pictures hanging on the wall in upper right background.

6. Before the photographer left for the girls' dormitories he caught the one Clifford Long examining his costume, a dress. Clifford has potted plants, beautiful pictures in his room among which we found a portrait of Lou Dedmon (on the desk.)



**B. W. STALLINGS**

*Official Time Inspector for  
Appalachian State Teachers  
College*

BOONE, N. C.

**Summers Hardware and Supply  
Company**

JOBBERS OF

Hardware, Mill Supplies, Etc.

Johnson City, Tennessee

"Six Meals Daily"

For Health Energy and Weight  
Control

**DR. PEPPER  
BOTTLING CO.**

West Jefferson, N. C.

Bottlers of

DR. PEPPER

"Good For Life"

## LIFE GOES TO A PARTY (Continued)



1. Once in the dormitory the photographer didn't lack for camera subjects. Many beautiful maidens made themselves handy while the camera clicked merrily away. This colored family, from the standpoint of unity and originality, made an impressive showing at the party.

2. At Appalachian the boys meet their girls in their respective dormitories. Here, Hal Farthing, genial editor of the *Appalachian*, asks Mrs. Hardin, the "keeper of the bees," to inform Miss Mavis Smith that he has come for her. A minute or two later the couple joined the party of spirited students in the gymnasium.

3. A few minutes before the gymnasium was invaded these girls were snapped in the hall. The buxom brunette on the right is wearing a dress belonging to her roommate and cohort, Myrle "Ton" Bolick. Cute girls on the left, eh?

4. A large group of party goers were caught as they were leaving Blan-Dolf for the gymnasium. Obviously, many in this group didn't feel a need for false-faces.

# APPALACHIAN STATE TEACHERS COLLEGE BOONE, N. C.



*Devoted Exclusively to  
Teacher Training for Public Education in the South*



FULL SUMMER QUARTER

5. In another room this picture of unusual interest was taken. While two girls help put the finishing touches on the costume of another, Miss Patrick, the friend of all students, displays herself as Jane Withers.

6. Let's do the "Big-Apple."

7. The one last reminder of the Halloween fanfare, the "clean-up."

8. The party is over; matrons scurry yon and hither rounding up the femmes. It is hard to say good night. In the picture here "Hitler" takes advantage of his opportunities, yes!



## THE PHOTOGRAPHS

In This Annual Were Made by

# Dunbar and Daniel

INCORPORATED

132 FAYETTEVILLE STREET

RALEIGH, N. C.

*Largest College Annual Photographers in the South*

FINE PORTRAITS

PROMPT SERVICE

*Engraving by*

Charlotte Engraving Company

Charlotte, N. C.

*Printing and Binding by*

Observer Printing House, Inc.

Charlotte, N. C.









