

GJ1451

.C28



Hollinger Corp.  
pH 8.5

GV 1451

.C28

Cooy 1

COND EDITION:

**CHESS · PROBLEMS:**

BY

**GEORGE E. CARPENTER.**

Part II. Three-movers.



Price: Fifty cents.

O. A. BROWNSON: PUBLISHER.

Rockdale: Iowa.

1886.


15  
553

1867 R

QV193  
B28

### NOTICE:

George E. Carpenter of Tarrytown, New York, the author of these Problems offers \$10 reward in cash, and Orestes A. Brownson of Rockdale, Iowa, the publisher of the same, offers ten dollars in chess books to the bona fide subscriber to this second or Rockdale edition of his collection, furnishing the largest list of problems, having two key moves, or two solutions radically different, or no solution at all. Such discoveries to be sent to the author, on or before January 1st 1887; and to be acknowledged in the Chess Journal.

 Part I. 46 Two-movers and Solutions.  
Part III. More than three-move mates.  
Subscription to the entire collection **\$1.25**

Rockdale, Sept. 1st 1886.

---

COPYRIGHT, 1886.

BY O. A. BROWNSON.

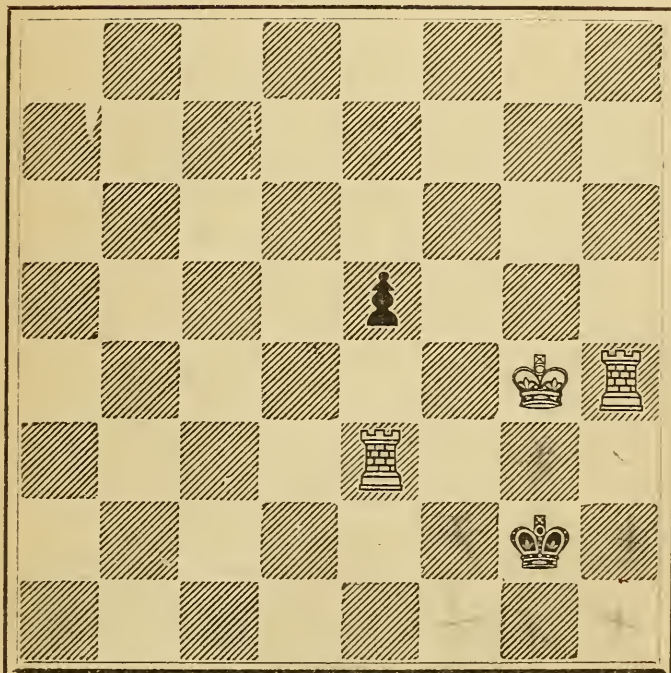
All rights reserved.

---

## Three Move Mates.

I.

BLACK.



WHITE.

White mates in three moves.

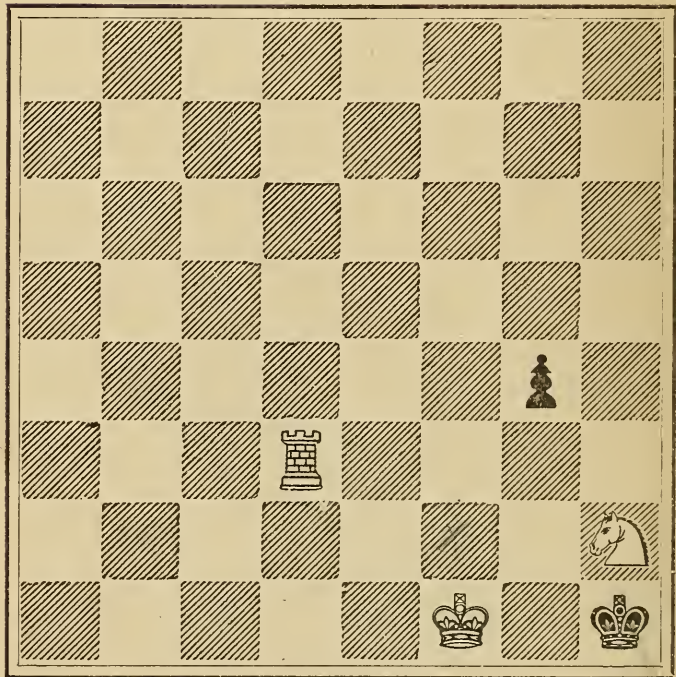
*Carpenter's Chess Problems.*

---

II.

---

BLACK.



WHITE.

White mates in three moves.

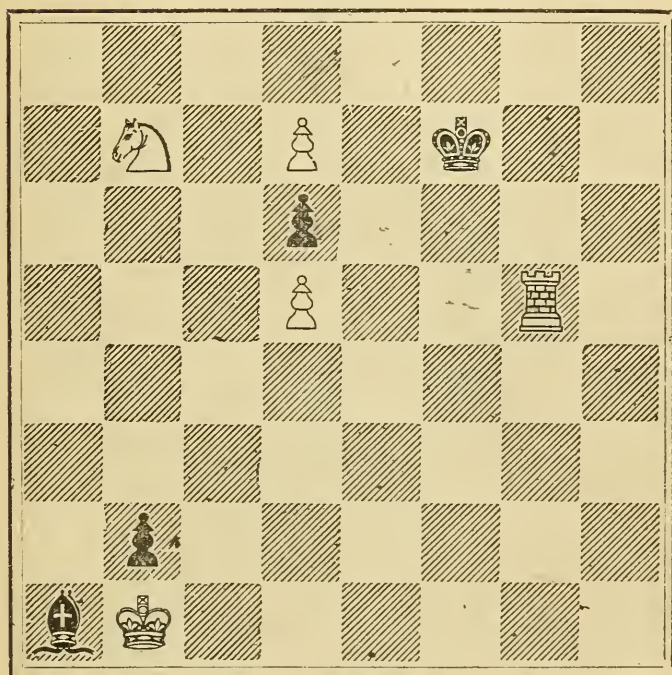
*Carpenter's Chess Problems.*

---

III.

---

BLACK.



WHITE.

White mates in three moves.

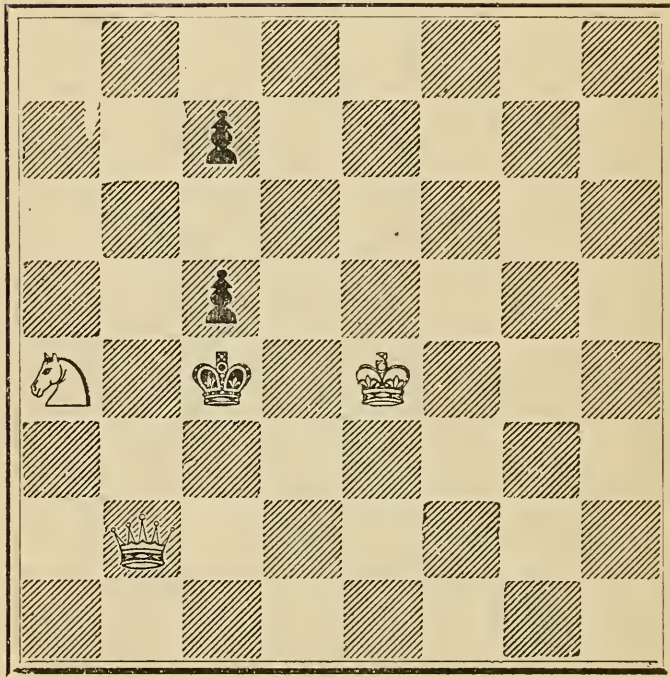
*Carpenter's Chess Problems.*

---

IV.

---

BLACK.



WHITE.

White mates in three moves.



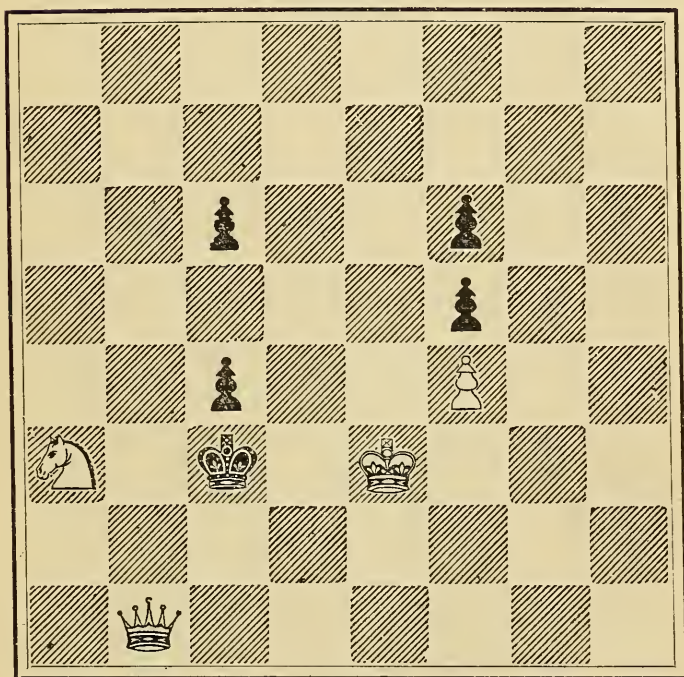
*Carpenter's Chess Problems.*

---

V.

---

BLACK.



WHITE.

White mates in three moves.

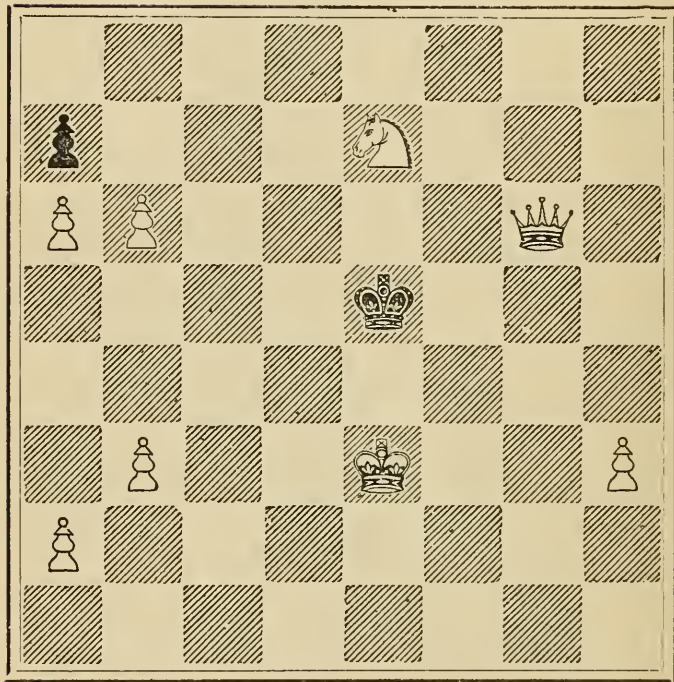
*Carpenter's Chess Problems.*

---

VI.

---

BLACK.



WHITE.

White mates in three moves.

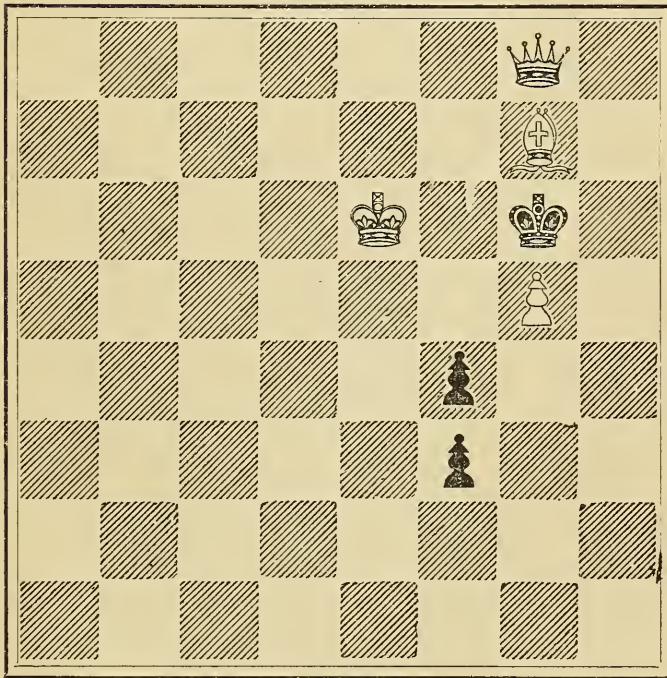
*Carpenter's Chess Problems.*

---

VII.

---

BLACK.



WHITE.

White mates in three moves.

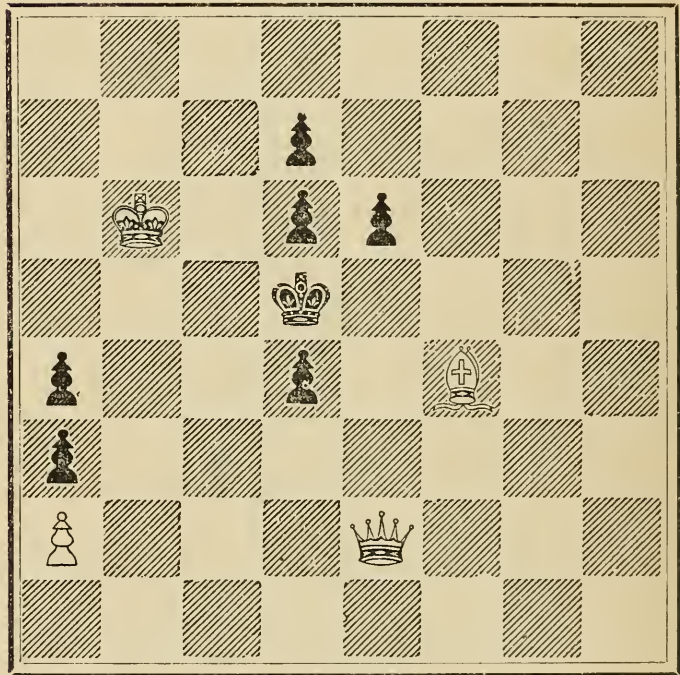
*Carpenter's Chess Problems.*

---

VIII.

---

BLACK.



WHITE

White mates in three moves.

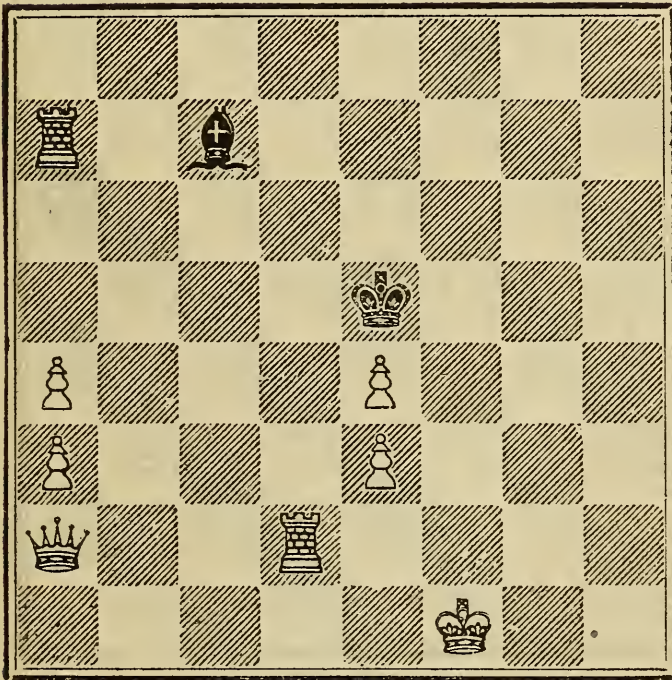
Carpenter's Chess Problems.

---

IX.

---

BLACK.



WHITE.

White mates in three moves.

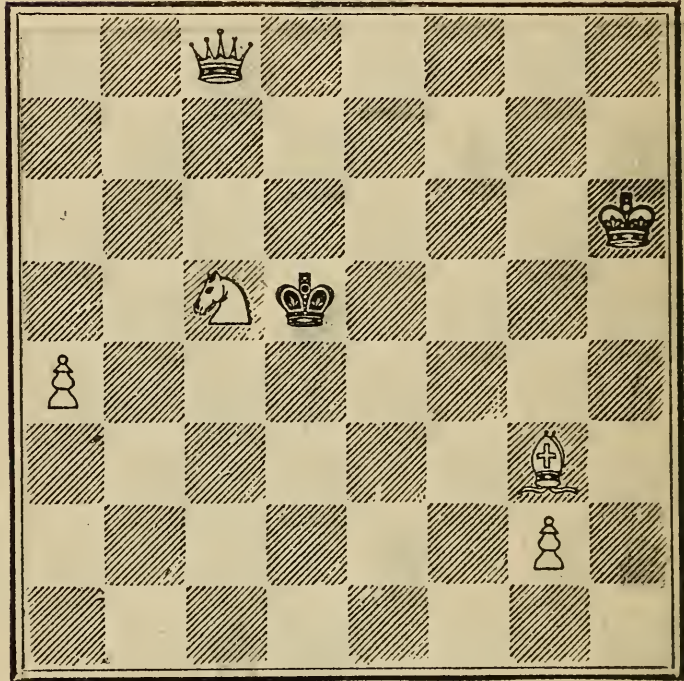
Carpenter's Chess Problems.

---

X.

---

BLACK.



WHITE.

White mates in three moves.

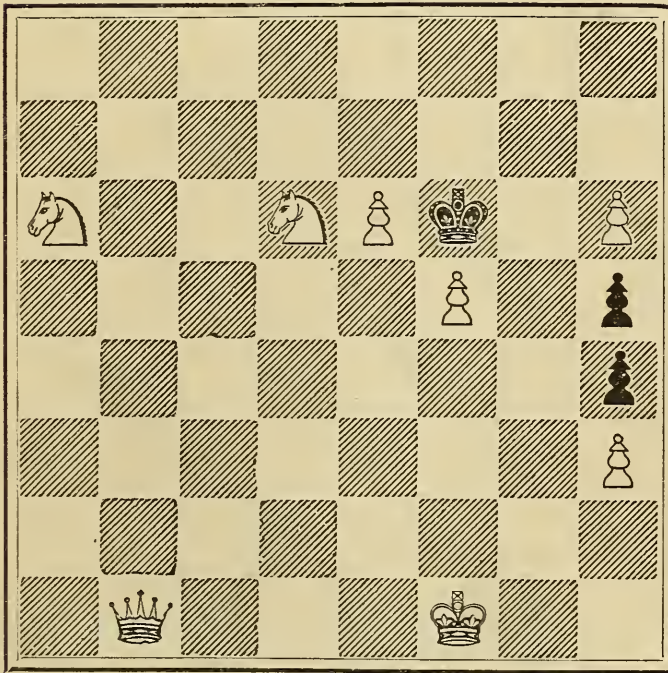
*Carpenter's Chess Problems.*

---

XI.

---

BLACK.



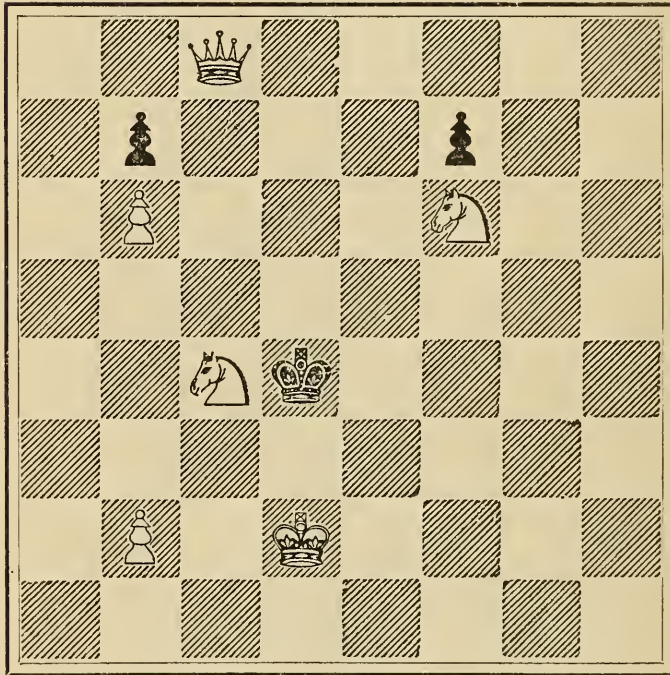
WHITE.

White mates in three moves.

XII.

---

BLACK.



WHITE.

White mates in three moves.



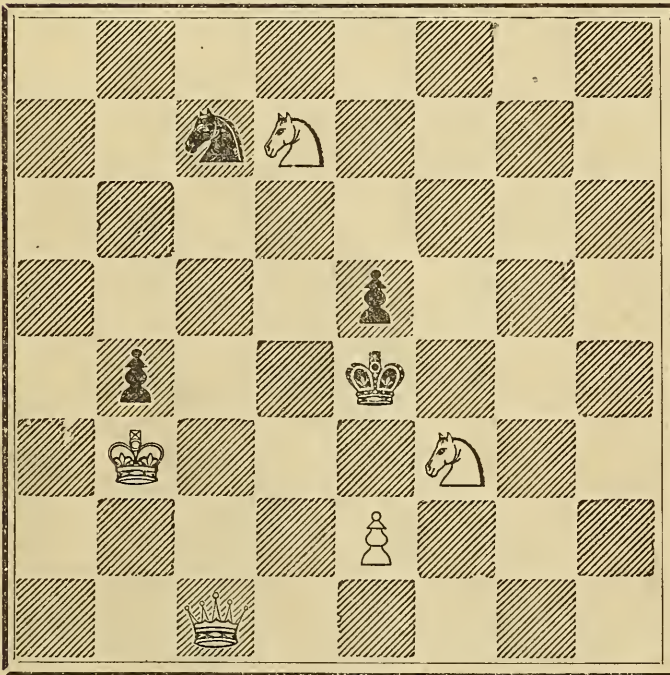
*Carpenter's Chess Problems.*

---

XIII.

---

BLACK.



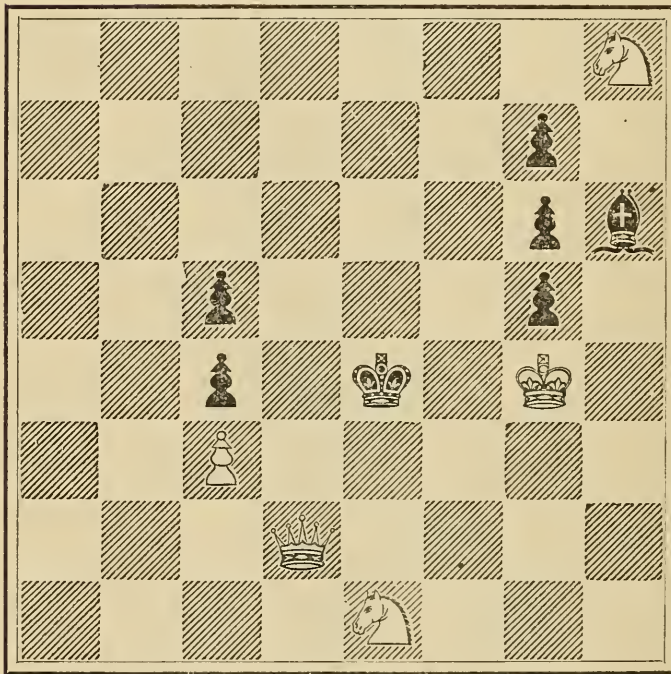
WHITE

White mates in three moves.

XIV.

---

BLACK.



WHITE.

White mates in three moves.

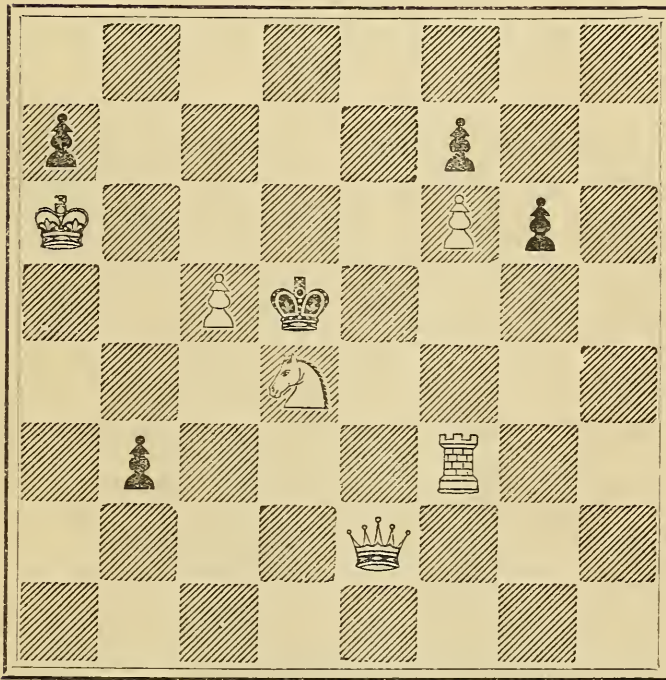
*Carpenter's Chess Problems.*

---

XV.

---

BLACK.



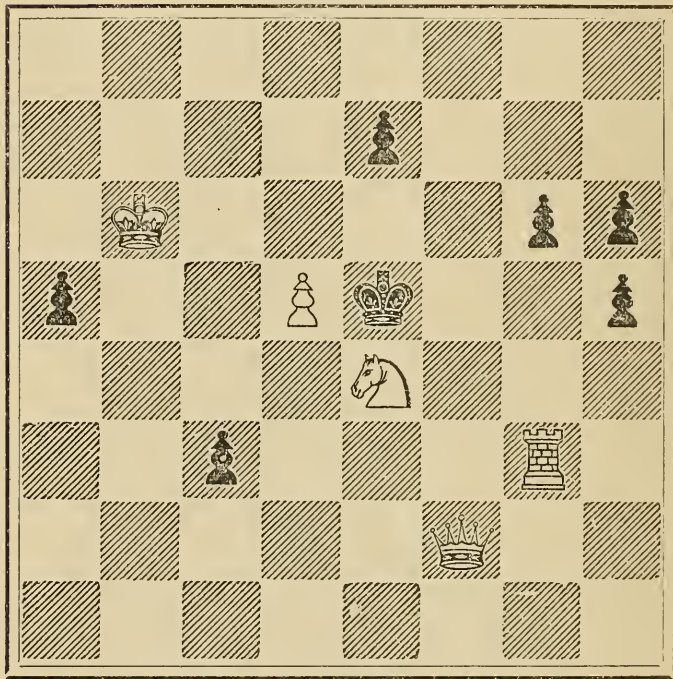
WHITE.

White mates in three moves.

XVI.

---

BLACK.



WHITE.

White mates in three moves.

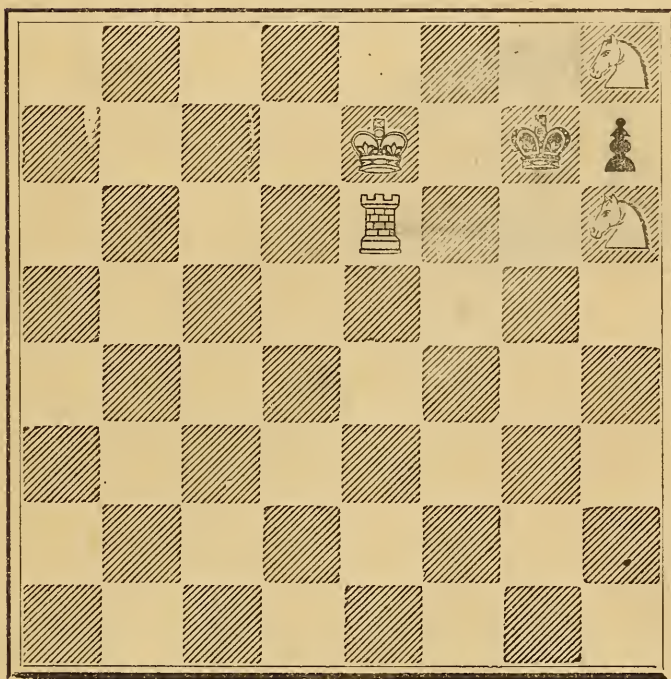
*Carpenter's Chess Problems.*

---

XVII.

---

BLACK.



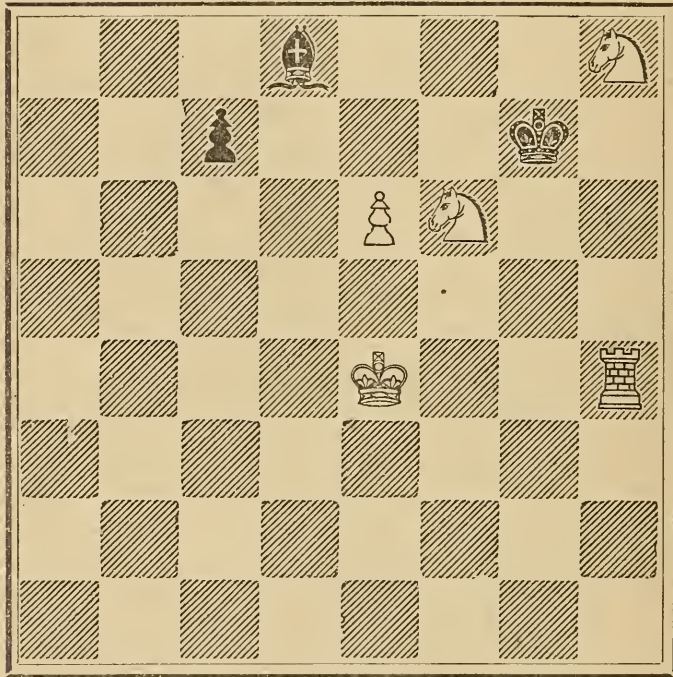
WHITE.

White mates in three moves.

XVIII.

---

BLACK.



WHITE

White mates in three moves.

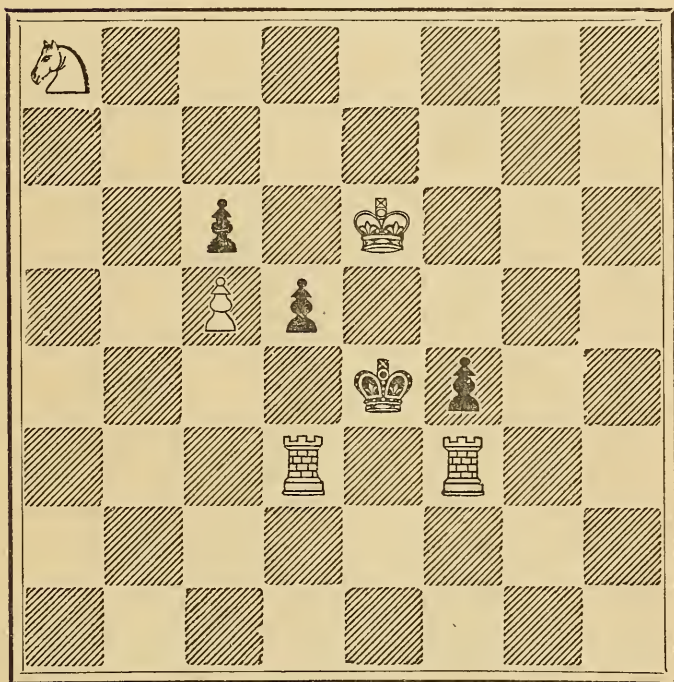
*Carpenter's Chess Problems.*

---

XIX.

---

BLACK.



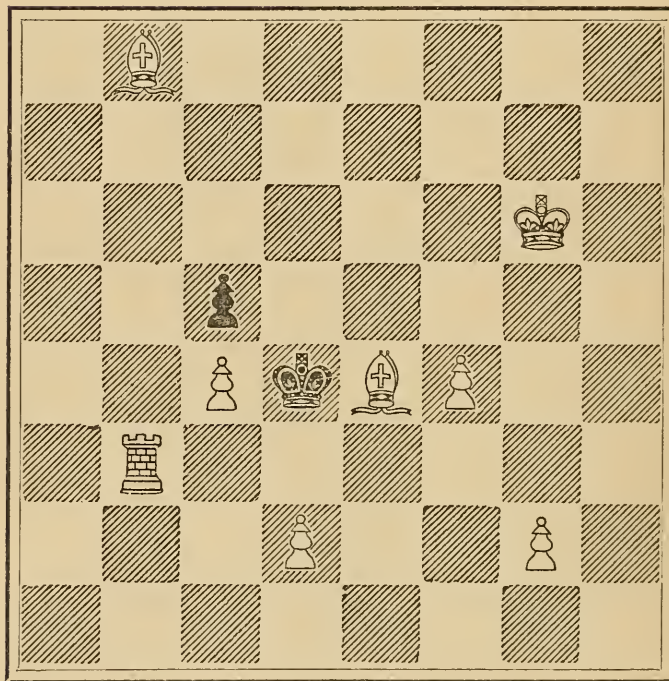
WHITE.

White mates in three moves.

XX.



BLACK.



WHITE.

White mates in three moves.

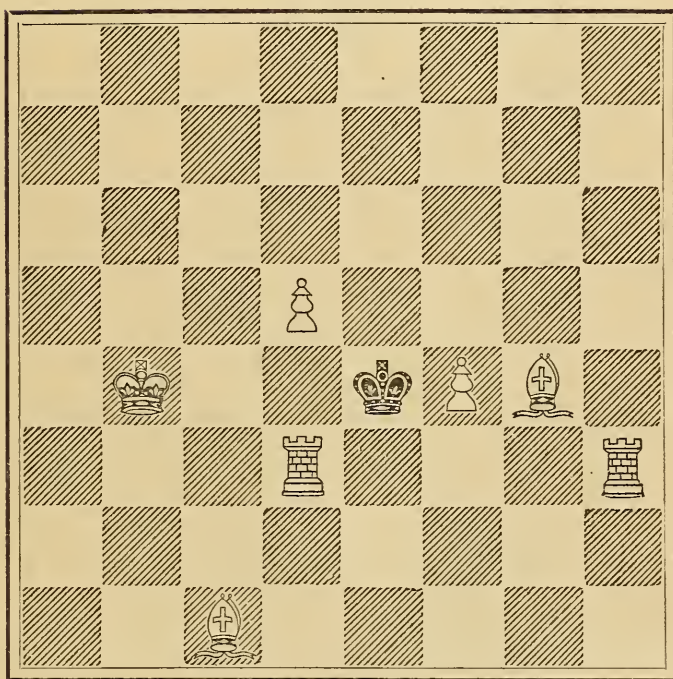


*Carpenter's Chess Problems.*

---

XXI.

BLACK.

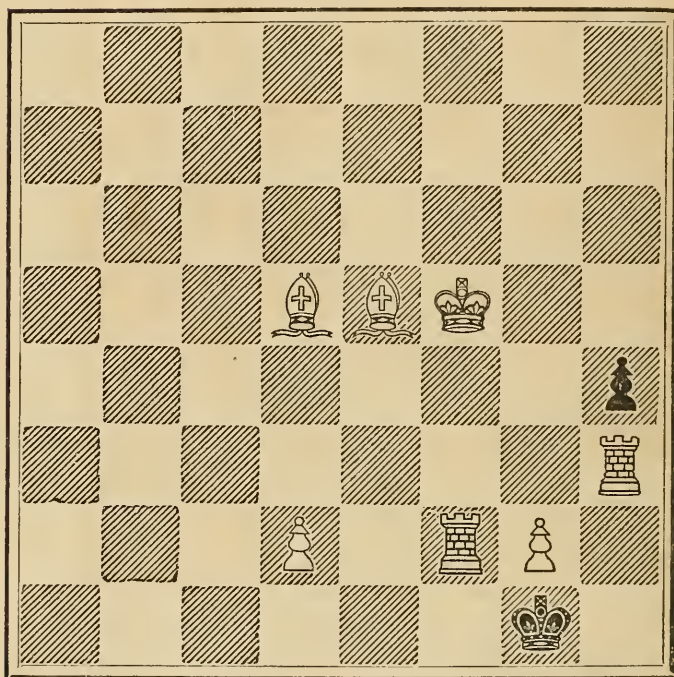


WHITE.

White mates in three moves.

XXII.

BLACK.



WHITE.

White mates in three moves.

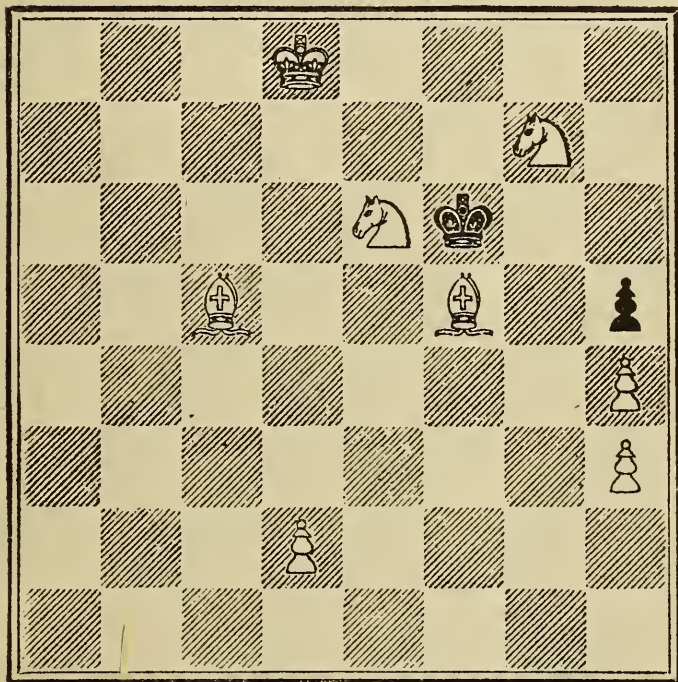
Carpenter's Chess Problems.

---

XXIII.

---

BLACK.



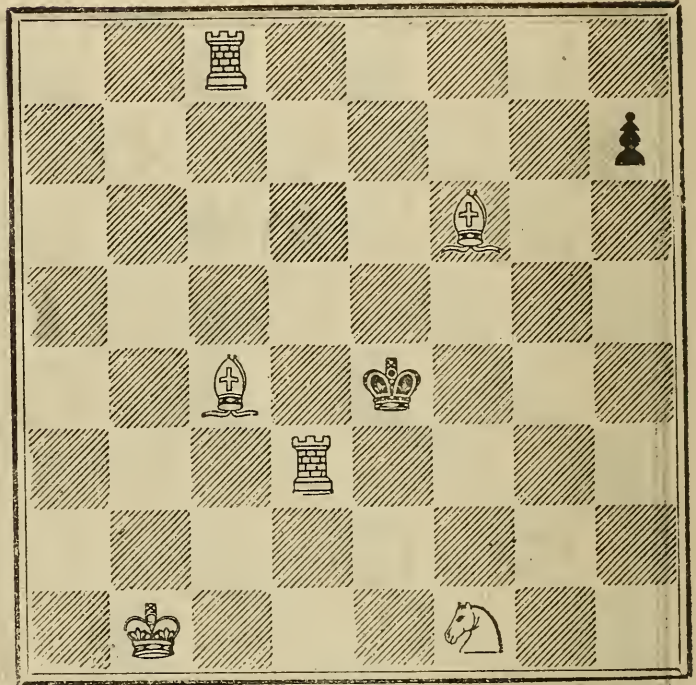
WHITE.

White mates in three moves.

XXIV.

---

BLACK.



WHITE.

White mates in three moves.

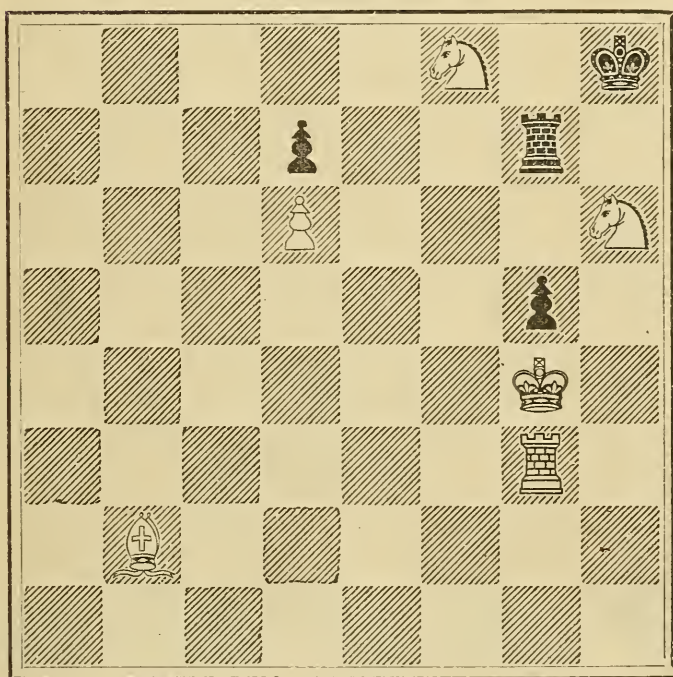
*Carpenter's Chess Problems.*

---

XXV.

---

BLACK.

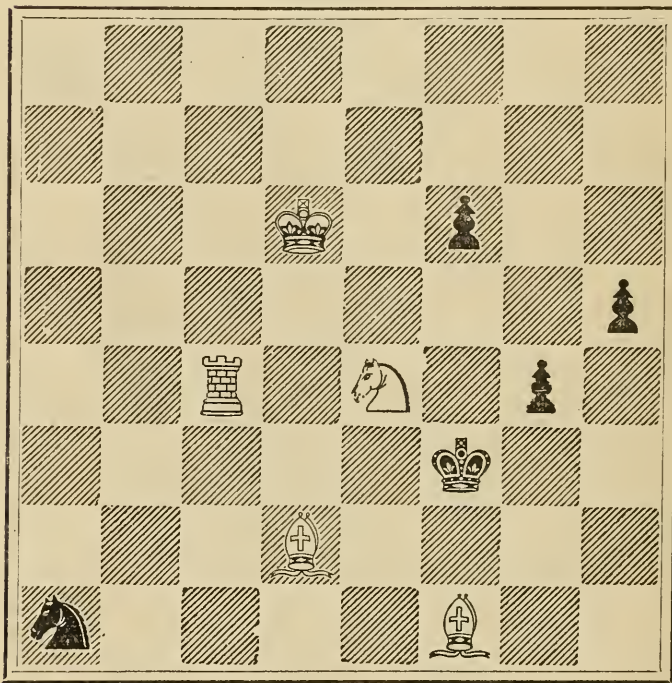


WHITE.

White mates in three moves.

XXVI.

BLACK.



WHITE.

White mates in three moves.

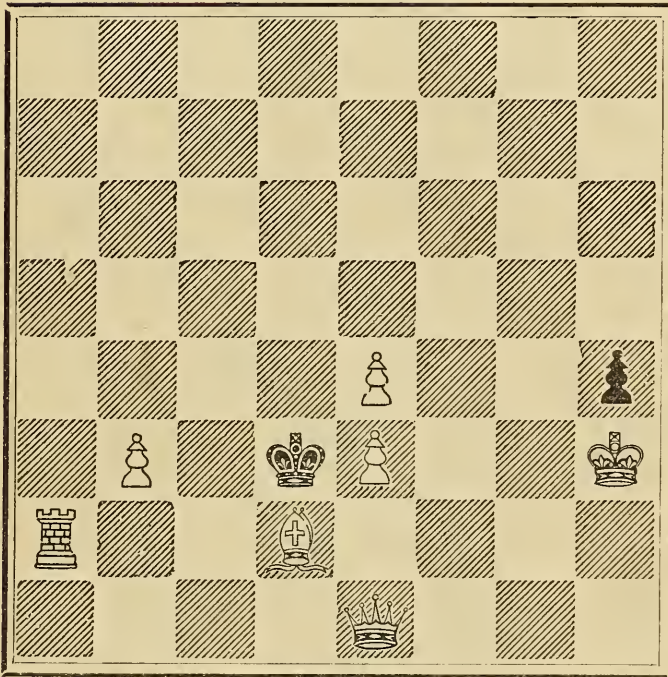
*Carpenter's Chess Problems.*

---

XXVII.

---

BLACK.

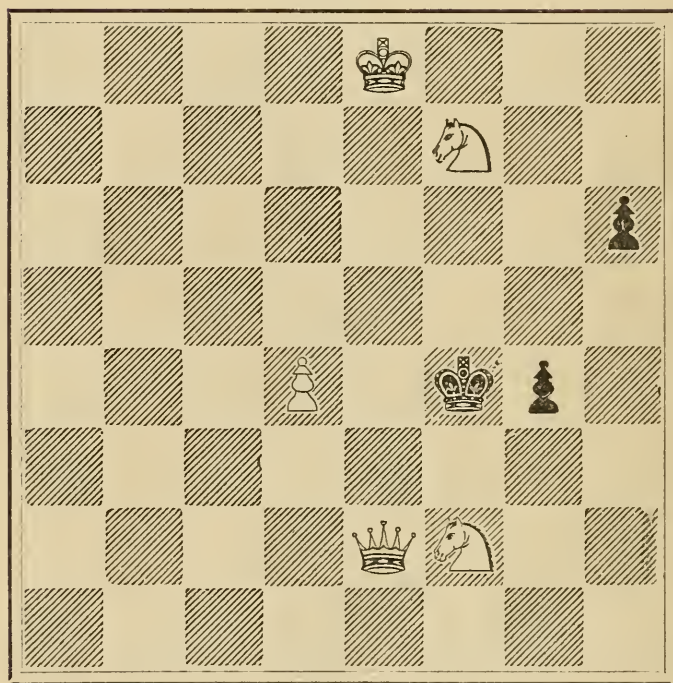


WHITE

White mates in three moves.

XXVIII.

BLACK.



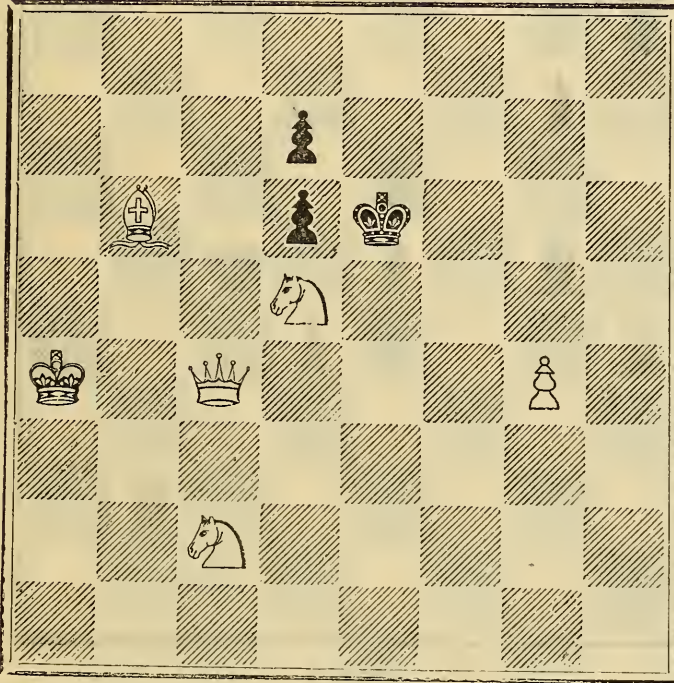
WHITE.

White mates in three moves.



XXIX.

BLACK.



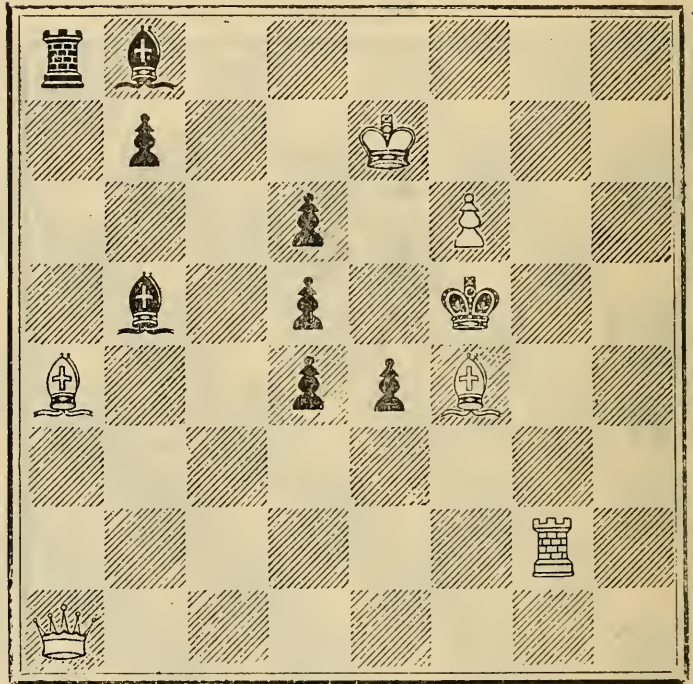
WHITE.

White mates in three moves.

Carpenter's Chess Problems.

XXX.

BLACK.



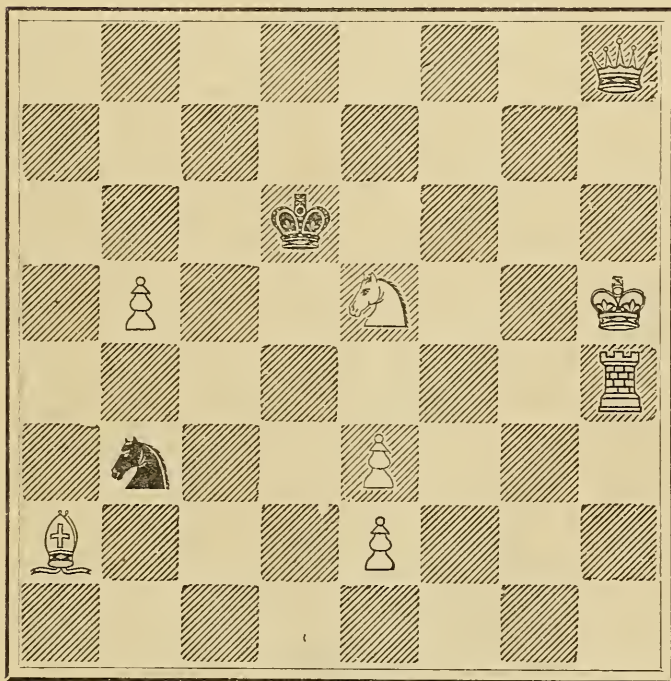
WHITE.

White mates in three moves.

XXXI.

---

BLACK.



WHITE.

White mates in three moves.

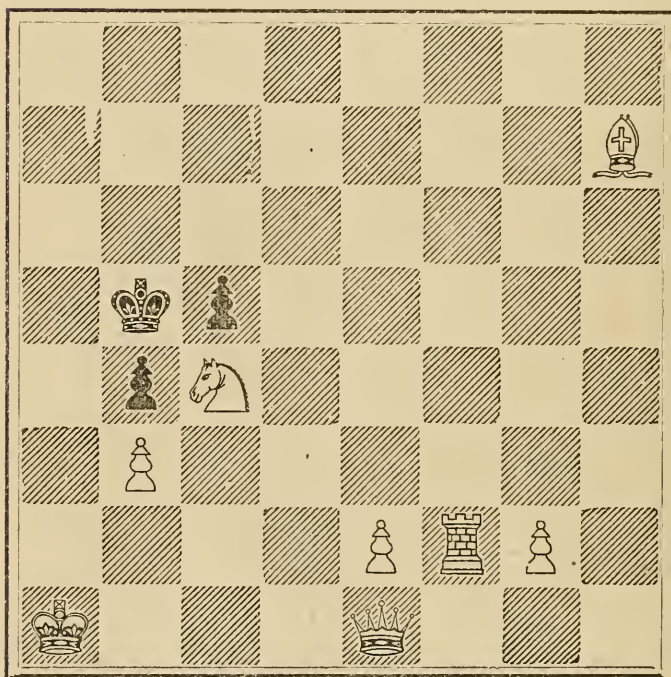
*Carpenter's Chess Problems.*

---

XXXII.

---

BLACK.

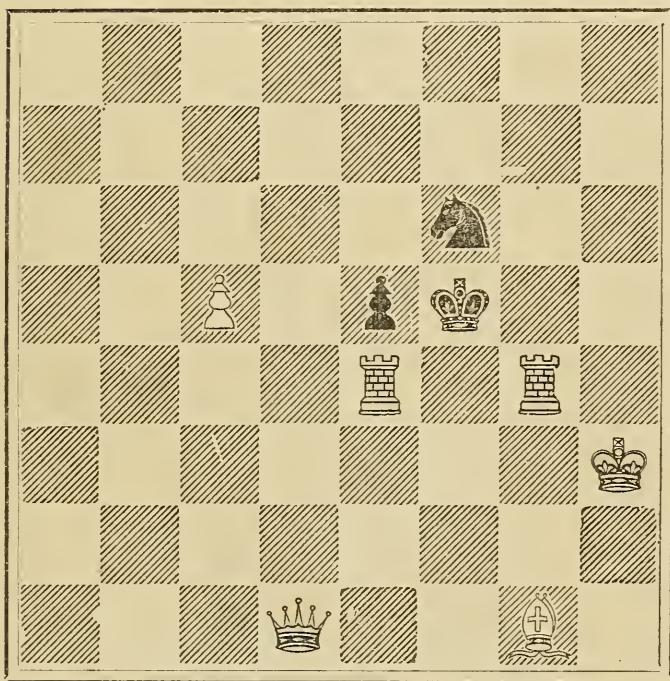


WHITE.

White mates in three moves.

XXXIII.

BLACK.



WHITE.

White mates in three moves.

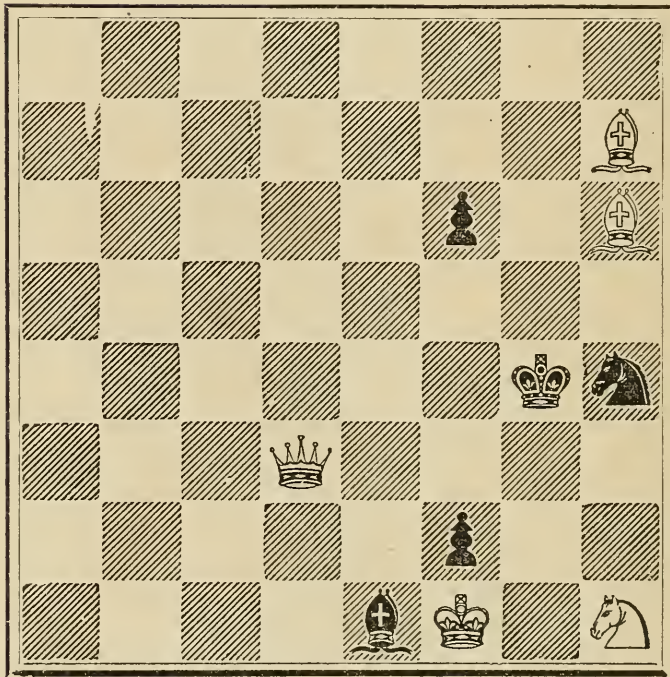
*Carpenter's Chess Problems.*

---

XXXIV.

---

BLACK.



WHITE.

White mates in three moves.

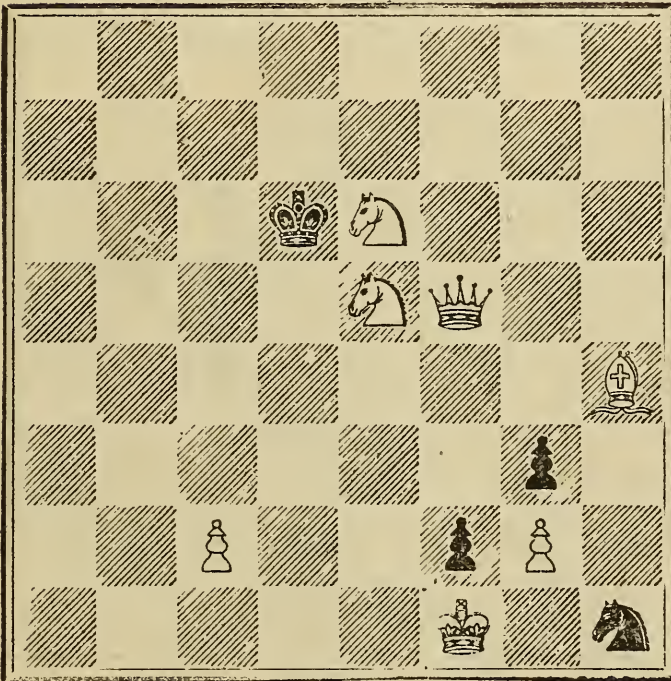
Carpenter's Chess Problems.

---

XXXV.

---

BLACK.



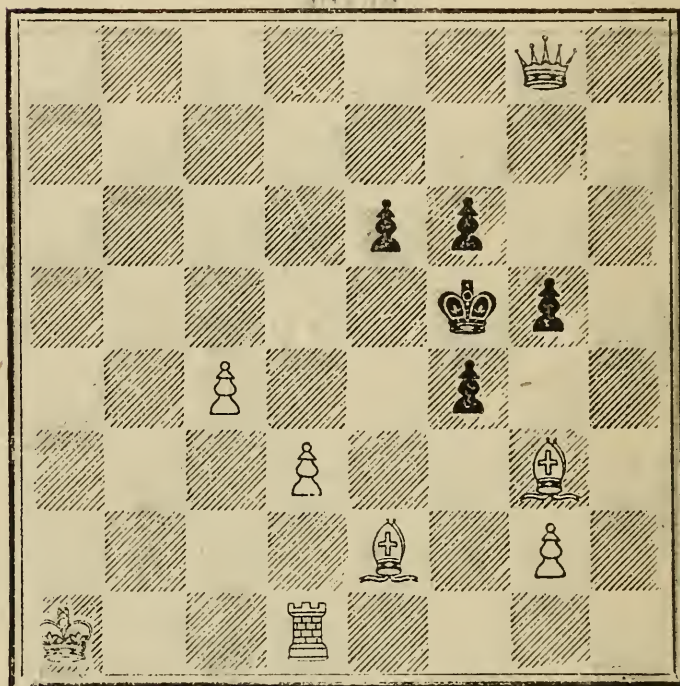
WHITE.

White mates in three moves.

Carpenter's Chess Problems.

XXXVI.

BLACK.



WHITE.

White mates in three moves.



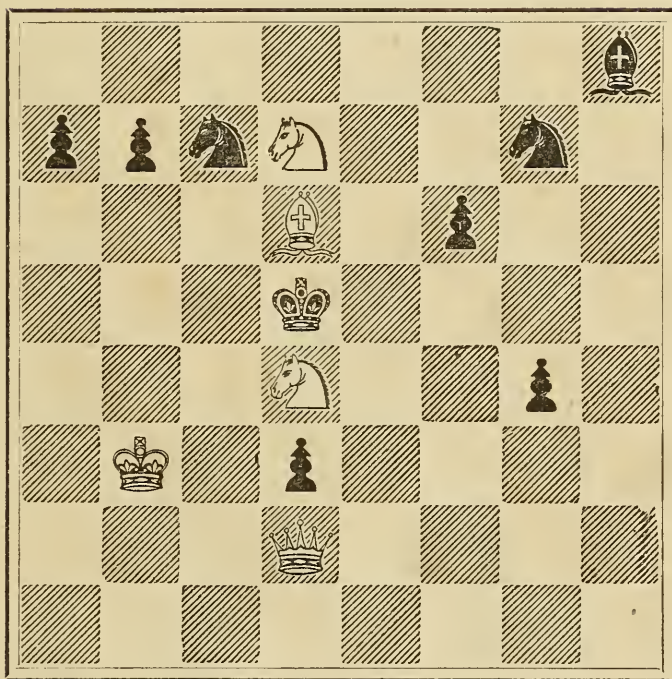
*Carpenter's Chess Problems.*

---

XXXVII.

---

BLACK.



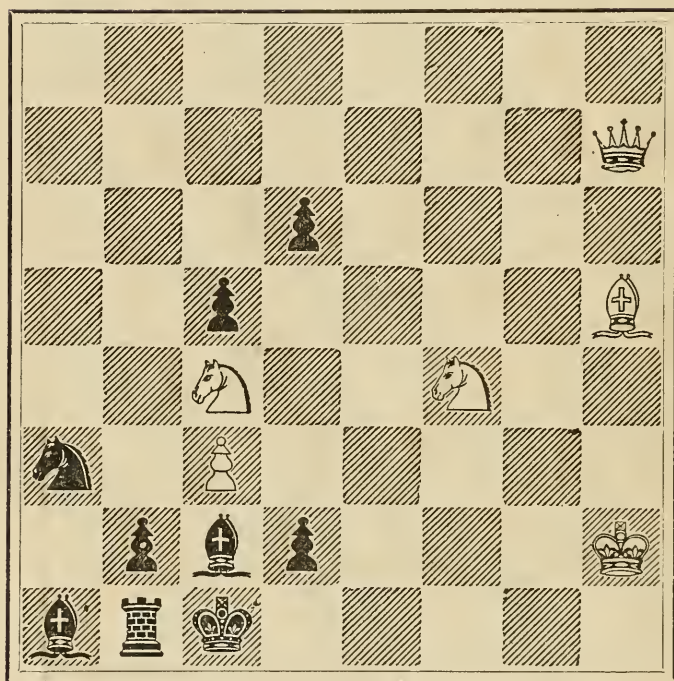
WHITE.

White mates in three moves.

*Carpenter's Chess Problems.*

XXXVIII.

BLACK.



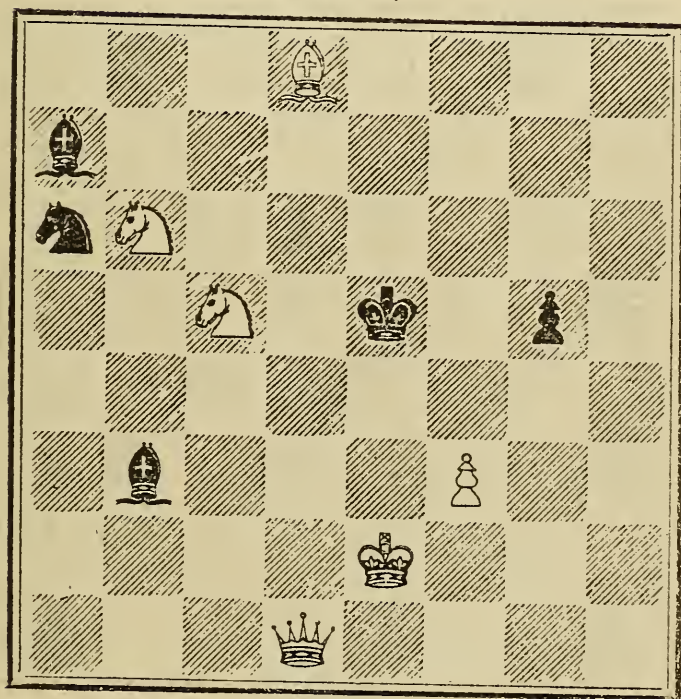
WHITE.

White mates in three moves.

Carpenter's Chess Problems.

XXXIX.

BLACK.



WHITE.

White mates in three moves.

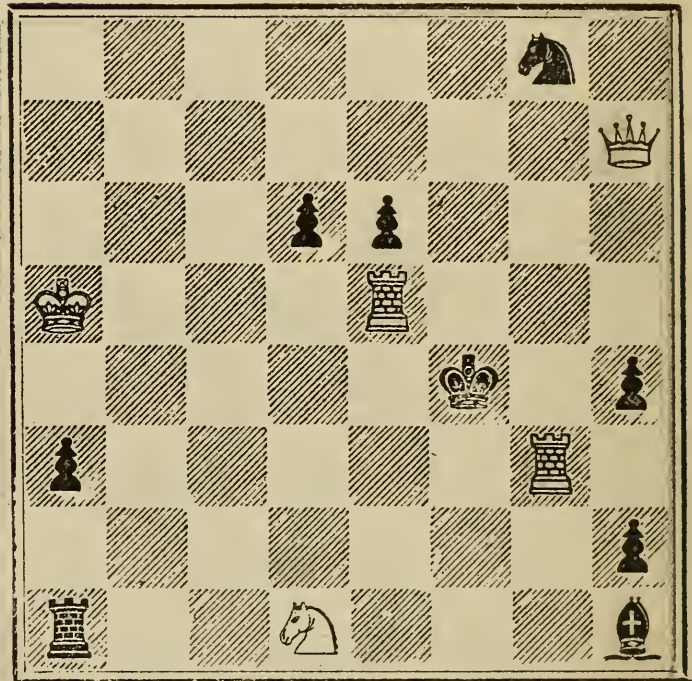
Carpenter's Chess Problems.

---

XL.

---

BLACK.



WHITE.

White mates in three moves.

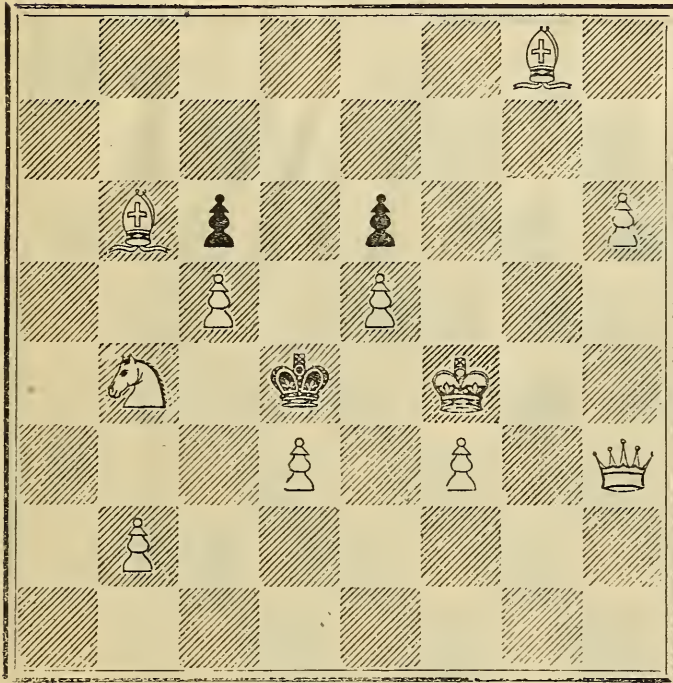
Carpenter's Chess Problems.

---

XLI.

---

BLACK.



WHITE.

White mates in three moves.

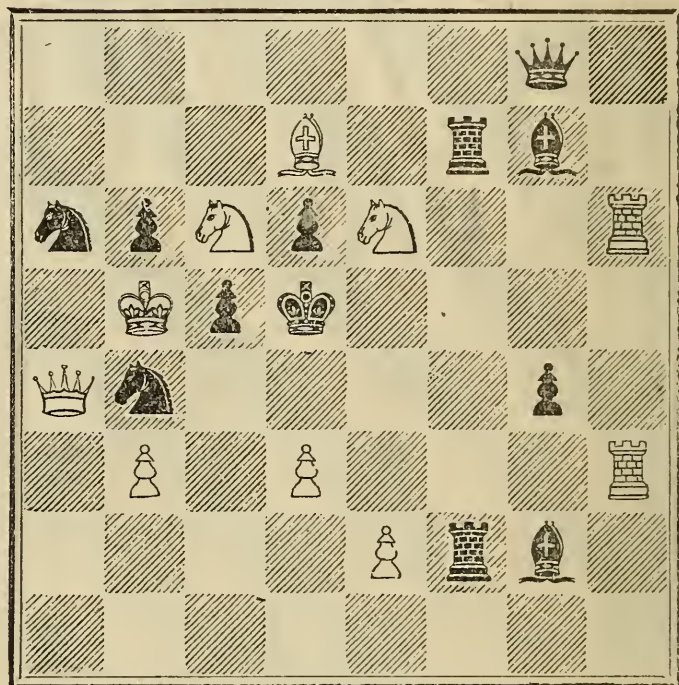
Carpenter's Chess Problems.

---

XLII.

---

BLACK.



WHITE.

White mates in three moves.

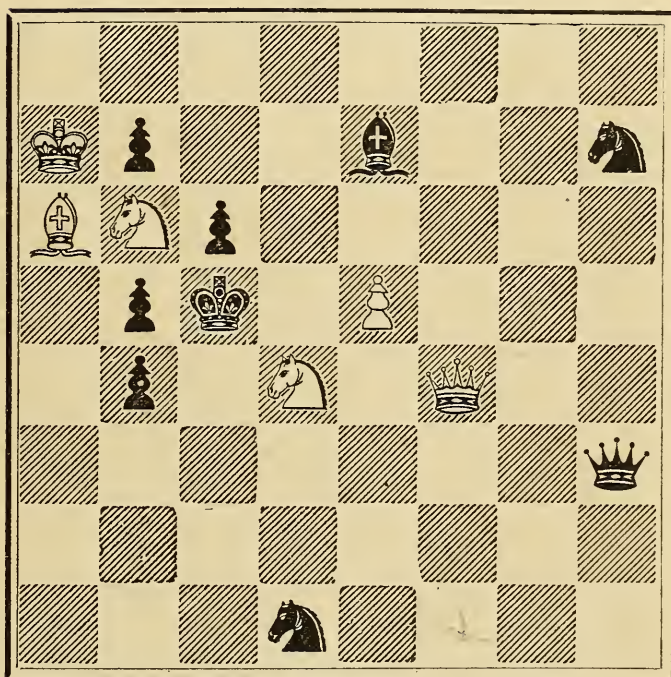
*Carpenter's Chess Problems.*

---

XLIII.

---

BLACK.



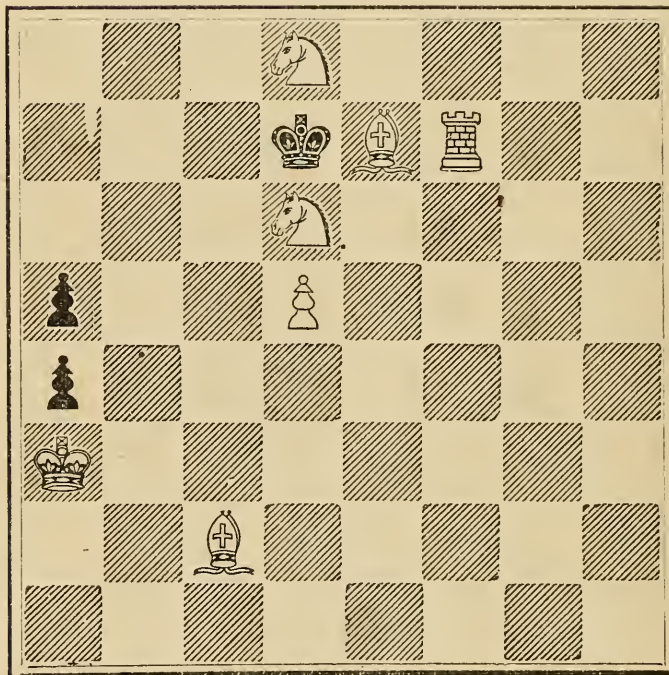
WHITE

White mates in three moves.

XLIV.

---

BLACK.



WHITE.

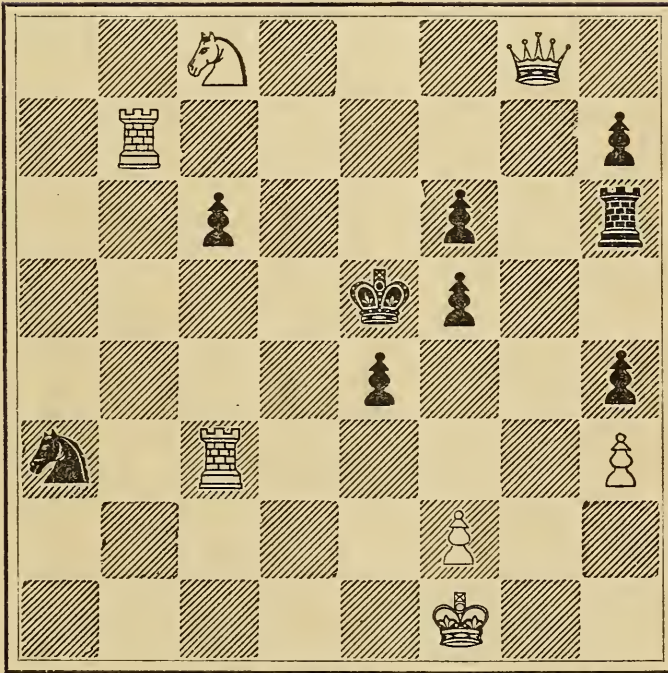
White mates in three moves.



*Carpenter's Chess Problems.*

XLV.

BLACK.



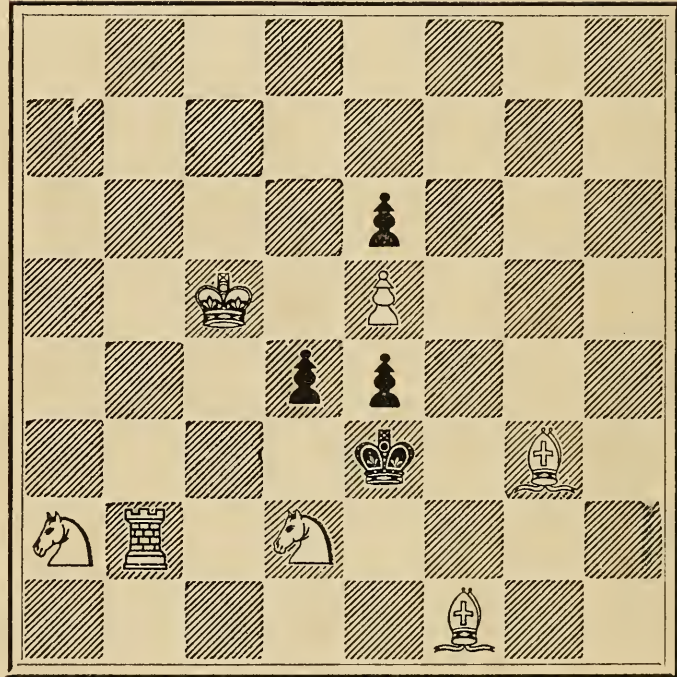
WHITE.

White mates in three moves.

XLVI.

---

BLACK.



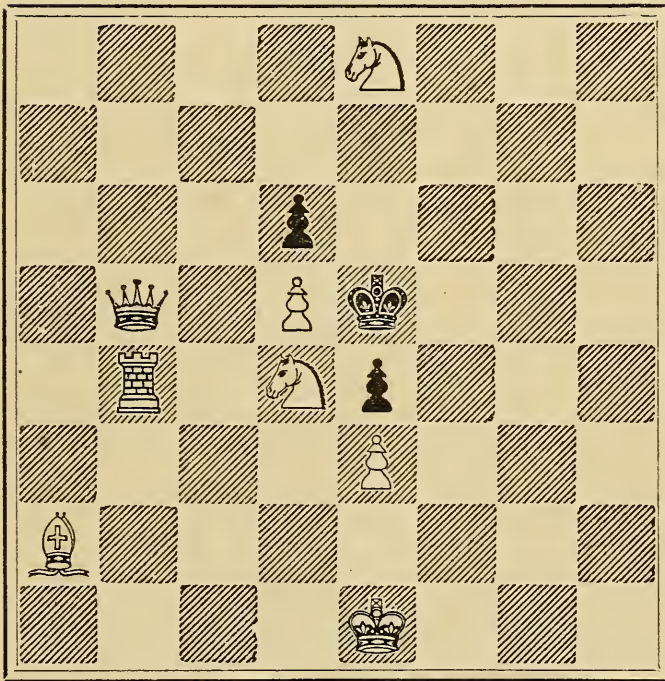
WHITE.

White mates in three moves.

XLVII.

---

BLACK.



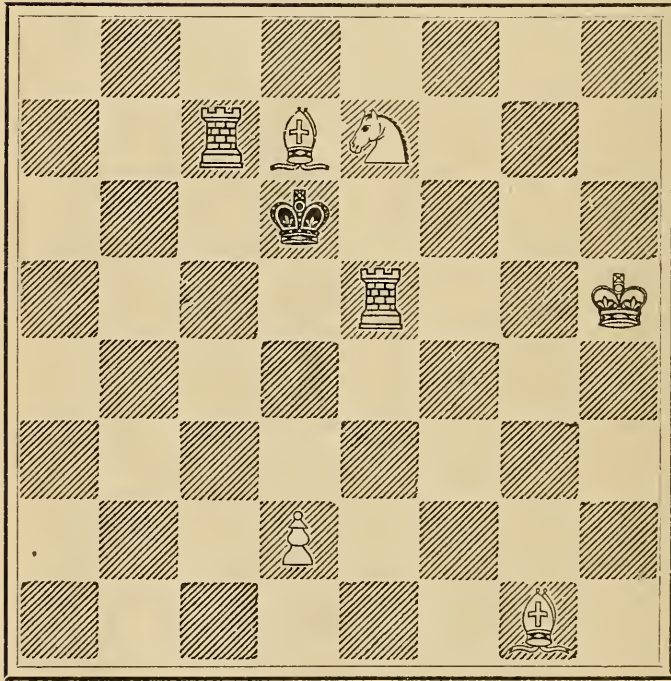
WHITE.

White mates in three moves.

XLVIII.

-----

BLACK.



WHITE.

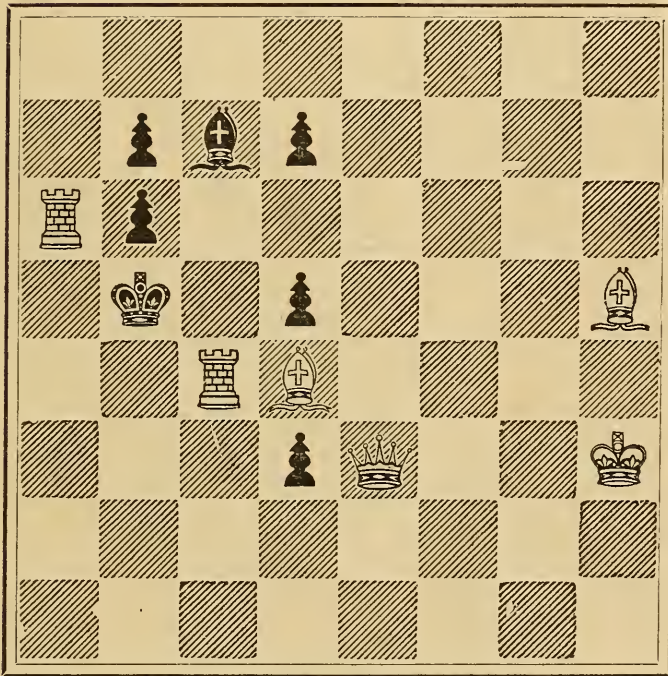
White mates in three moves.

*Carpenter's Chess Problems.*

---

XLIX.

BLACK.



WHITE.

White mates in three moves.

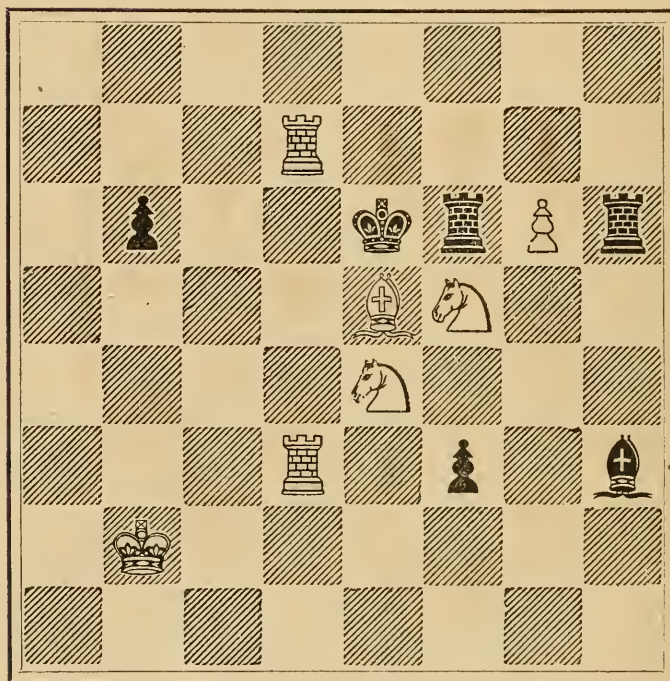
*Carpenter's Chess Problems.*

---

L.

---

BLACK.



WHITE.

White mates in three moves.

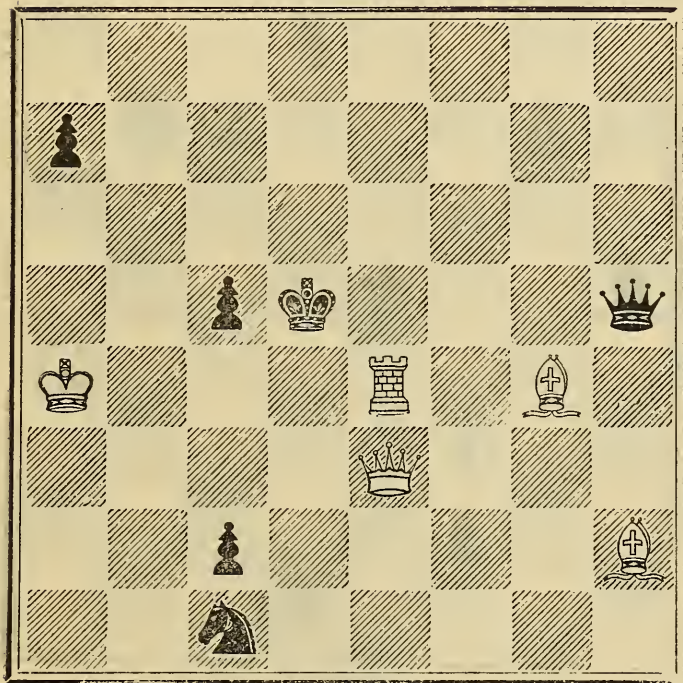
Carpenter's Chess Problems.

---

LI.

---

BLACK.



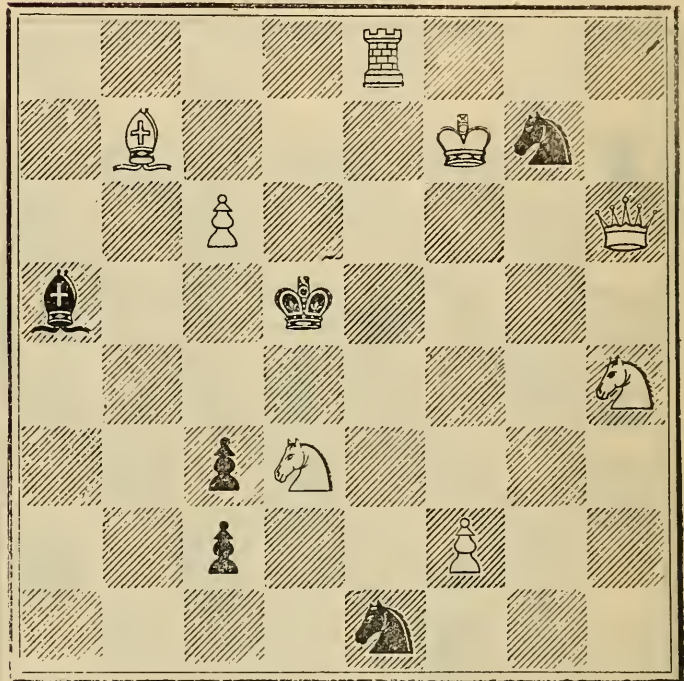
WHITE.

White mates in three moves.

Carpenter's Chess Problems.

LII.

BLACK.



WHITE.

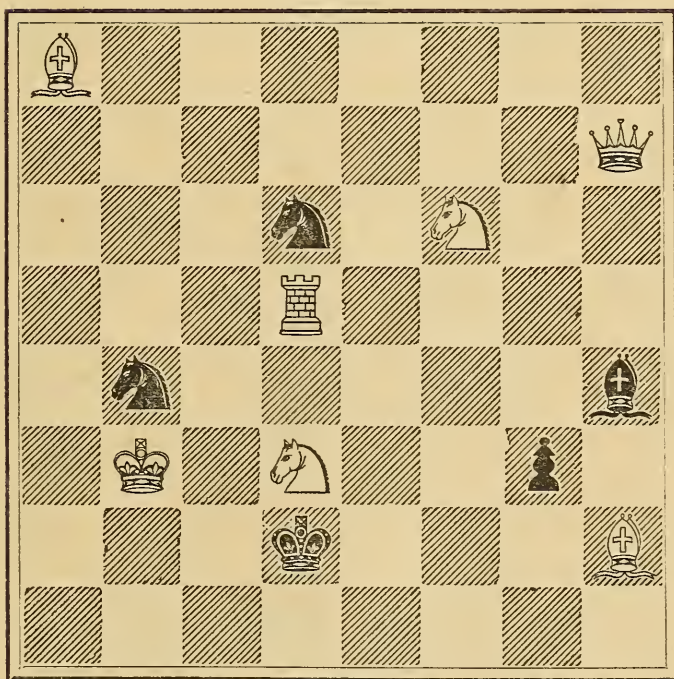
White mates in three moves.



*Carpenter's Chess Problems.*

LIII.

BLACK.



WHITE.

White mates in three moves.

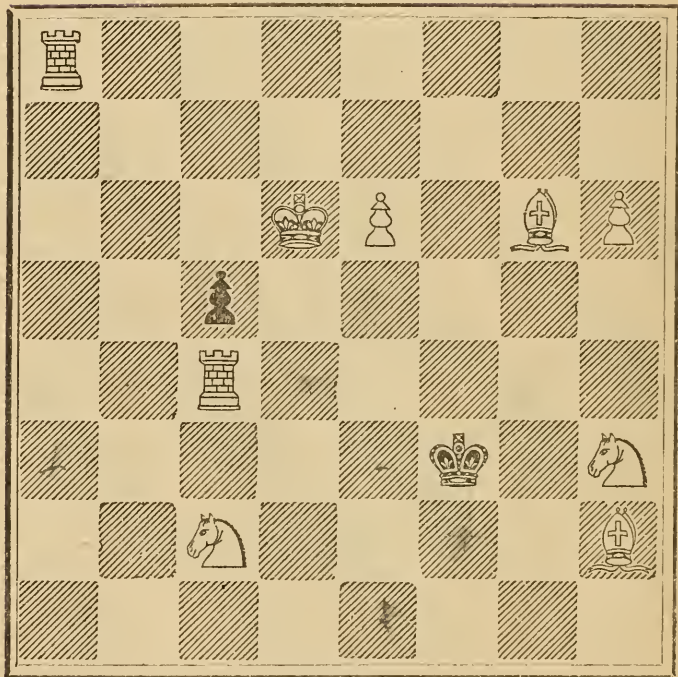
*Carpenter's Chess Problems.*

---

I.IV.

---

BLACK.



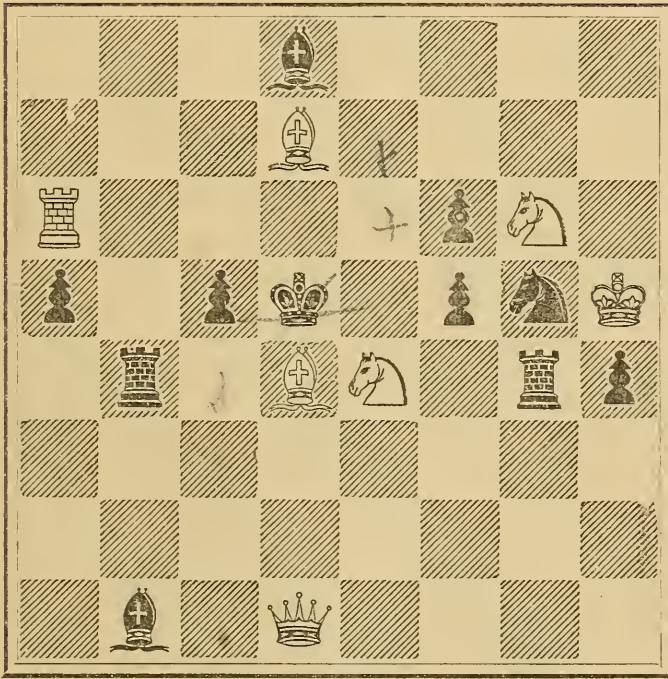
WHITE

White mates in three moves.

*Carpenter's Chess Problems.*

LV.

BLACK.



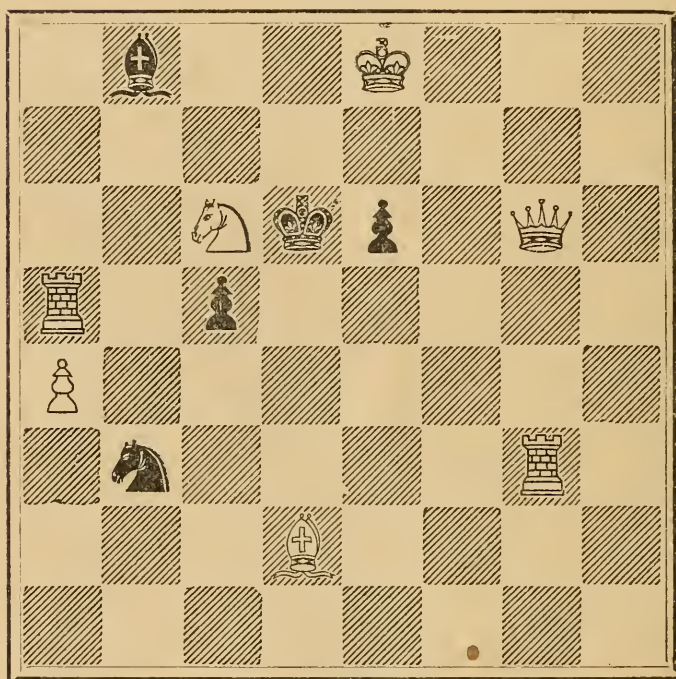
WHITE.

White mates in three moves.

LVI.

---

BLACK.



WHITE.

White mates in three moves.

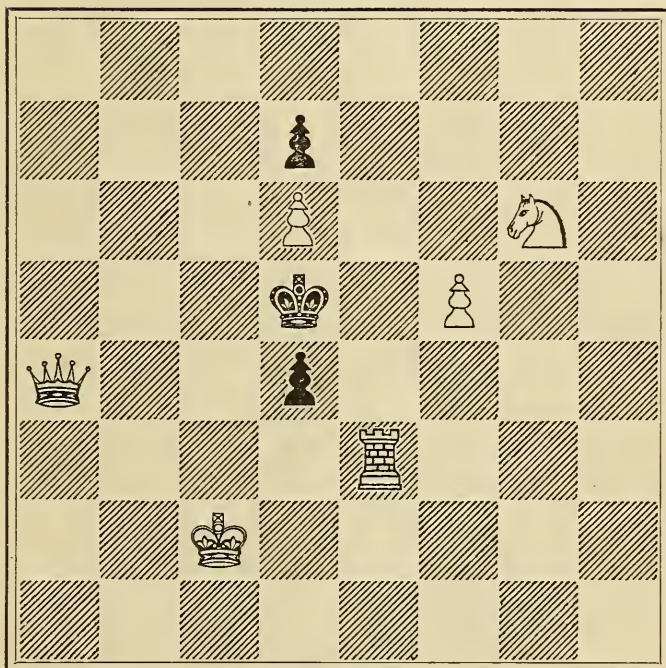
*Carpenter's Chess Problems.*

---

LVII.

---

BLACK.



WHITE.

White mates in three moves.

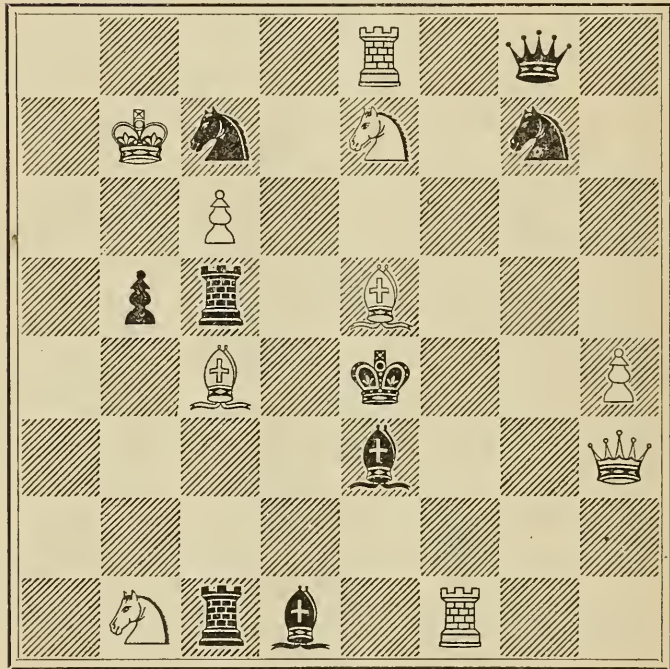
*Carpenter's Chess Problems.*

---

LVIII.

---

BLACK.



WHITE.

White mates in three moves.

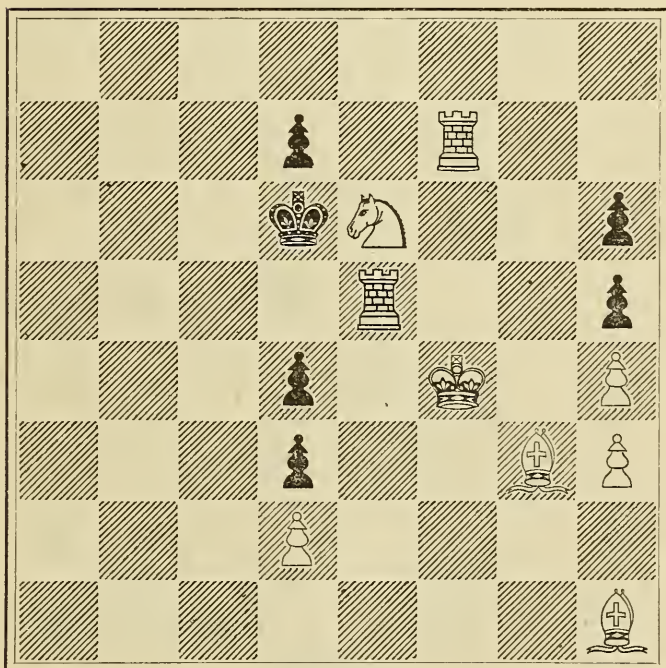
*Carpenter's Chess Problems.*

---

LIX.

---

BLACK.



WHITE.

White mates in three moves.

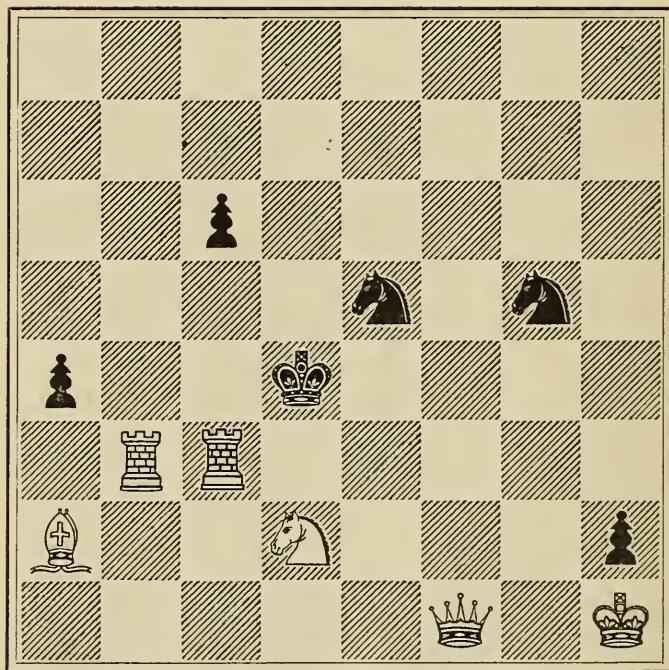
*Carpenter's Chess Problems.*

---

LX.

---

BLACK.



WHITE.

White mates in three moves.



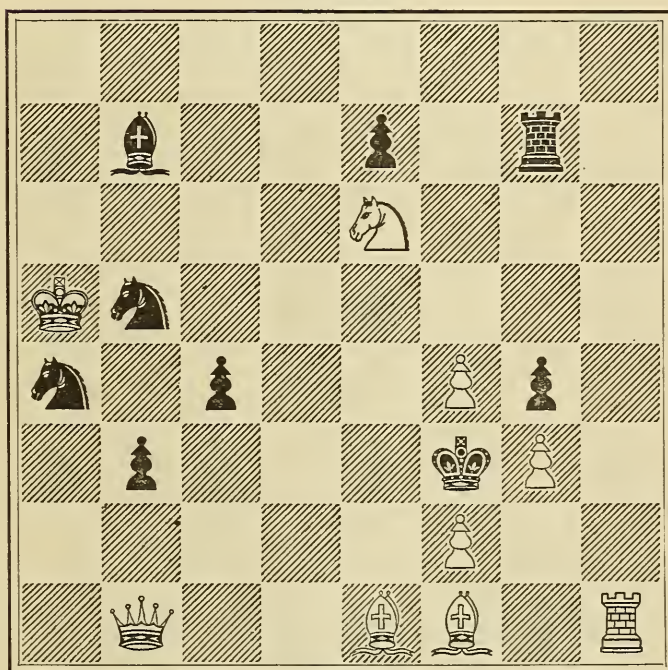
*Carpenter's Chess Problems.*

---

LXI.

---

BLACK.



WHITE.

White mates in three moves.

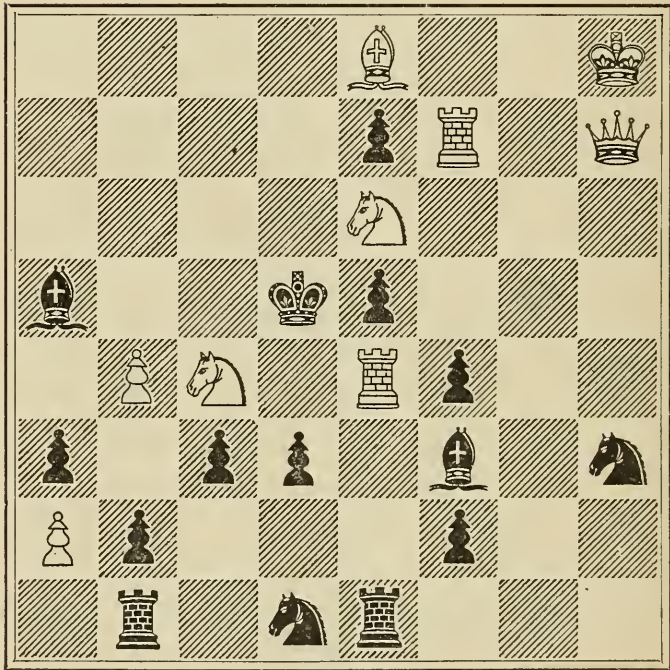
*Carpenter's Chess Problems.*

---

LXII.

---

BLACK.



WHITE. .

White mates in three moves.

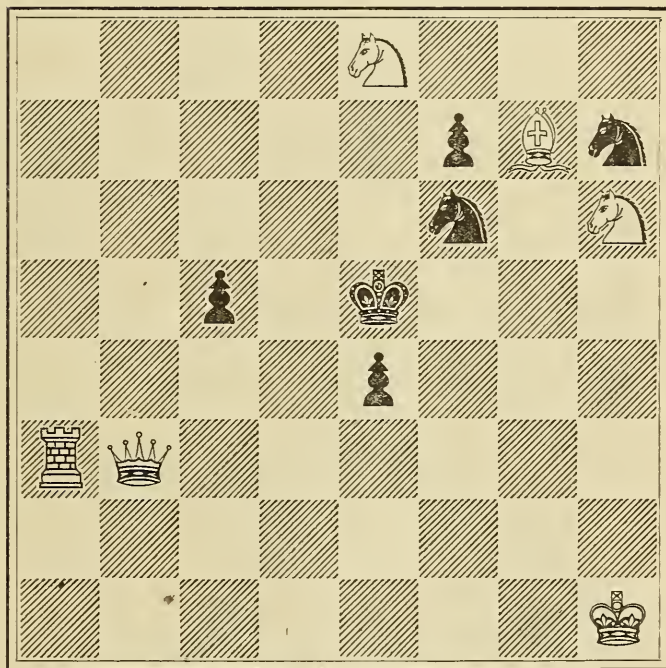
*Carpenter's Chess Problems.*

---

LXIII.



BLACK.



WHITE.

White mates in three moves.

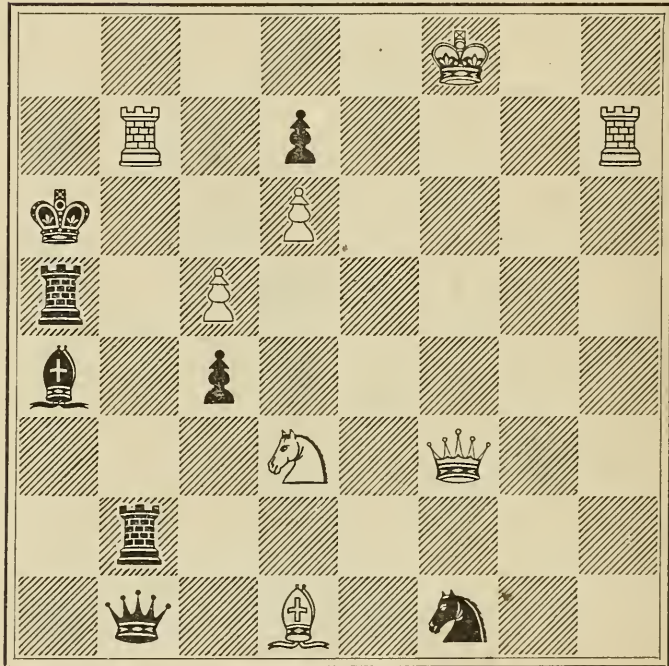
*Carpenter's Chess Problems.*

---

LXIV.

---

BLACK.

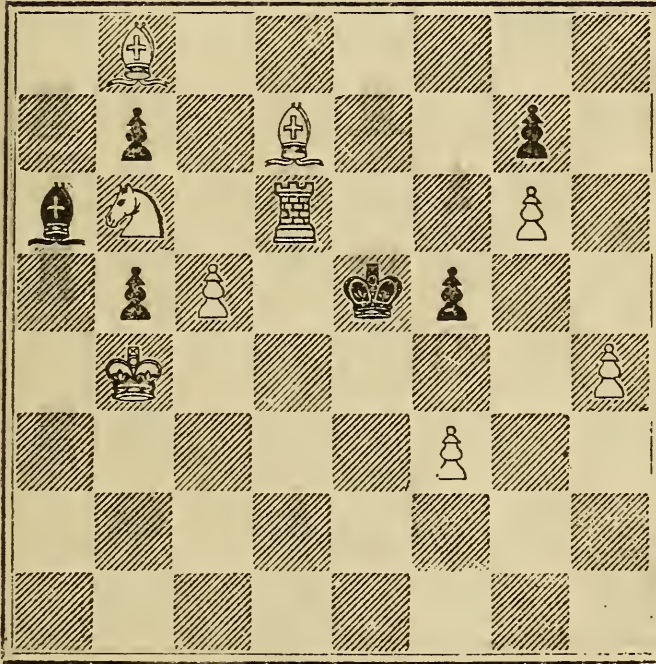


WHITE.

White mates in three moves.

LXV.

BLACK.



WHITE.

White mates in three moves.

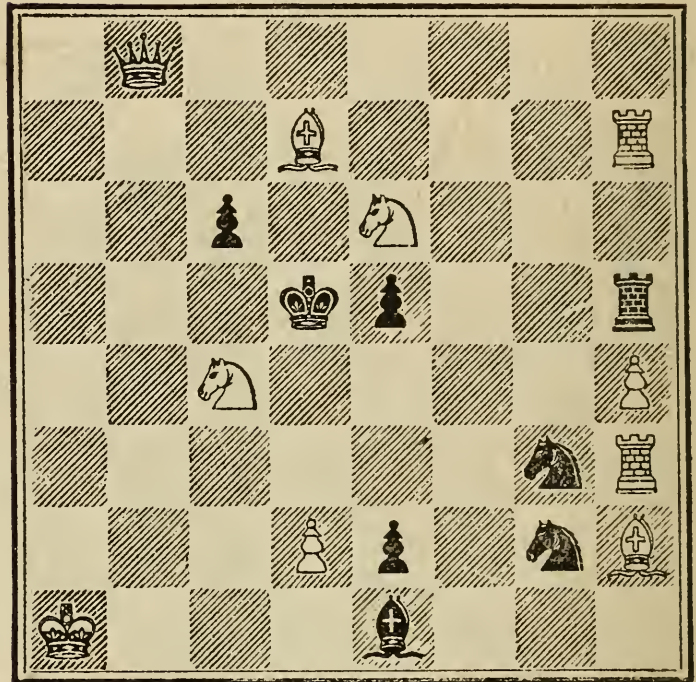
Carpenter's Chess Problems.

---

LXVI.

---

BLACK.



WHITE.

White mates in three moves.

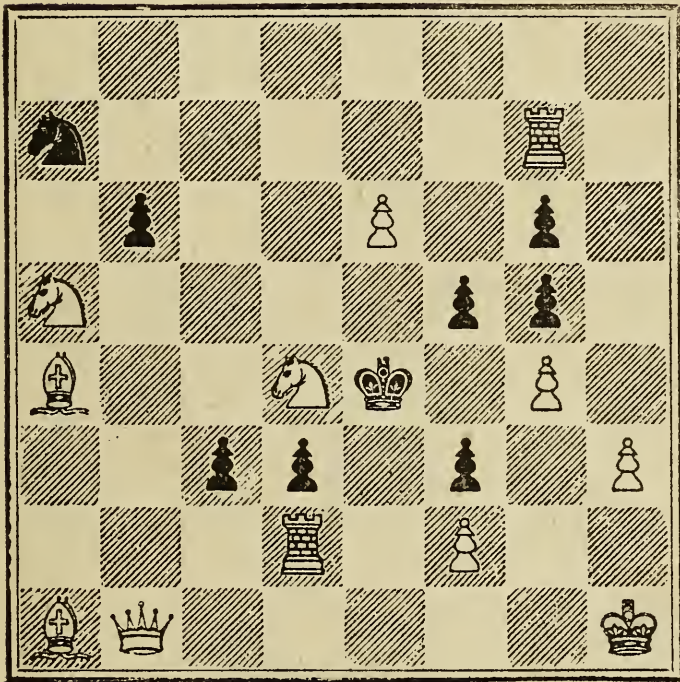
Carpenter's Chess Problems.

---

LXVII.

---

BLACK.



WHITE.

White mates in three moves.

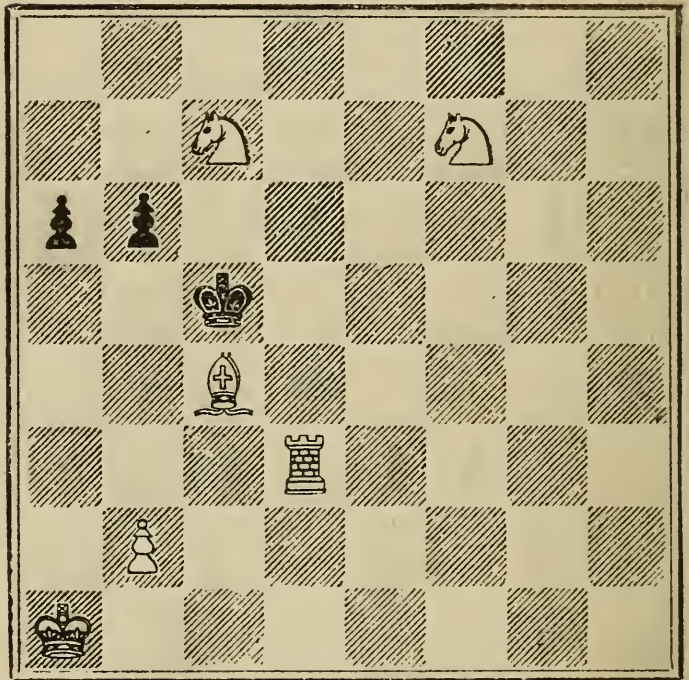
Carpenter's Chess Problems.

---

LXVIII.

---

BLACK.



WHITE.

White mates in three moves.



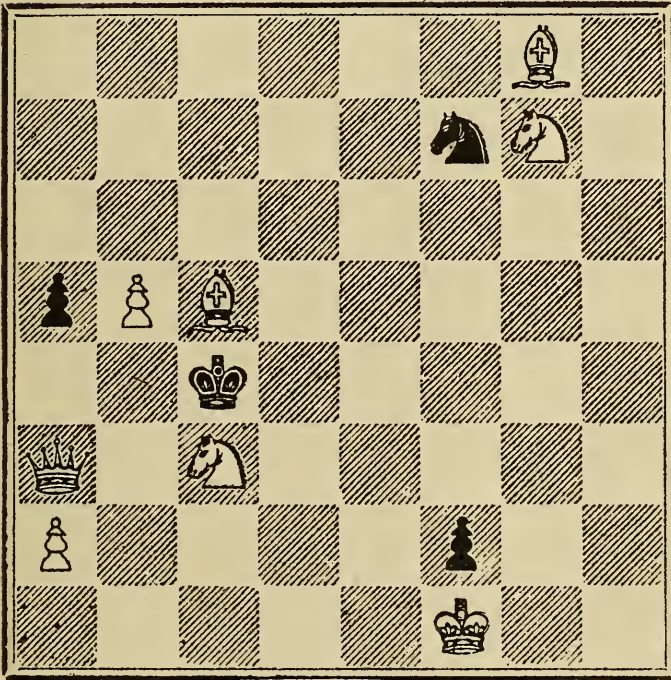
Carpenter's Chess Problems.

---

LXIX.

---

BLACK.



WHITE.

White mates in three moves.

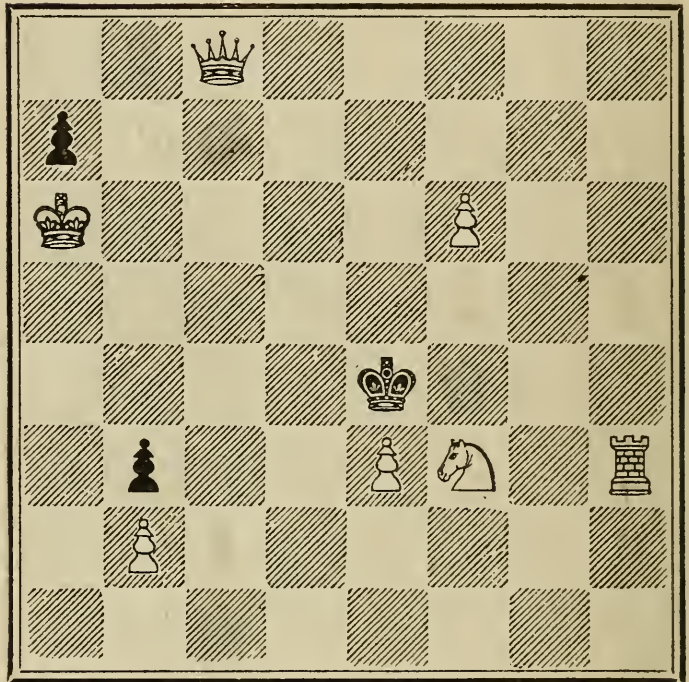
Carpenter's Chess Problems.

---

LXX.

---

BLACK.



WHITE.

White mates in three moves.

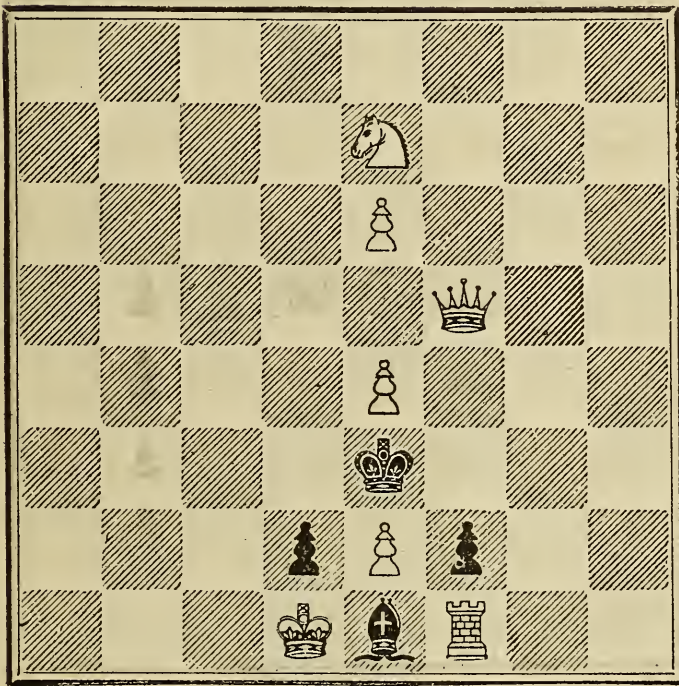
Carpenter's Chess Problems.

---

LXXI.

---

BLACK.



WHITE.

White mates in three moves.

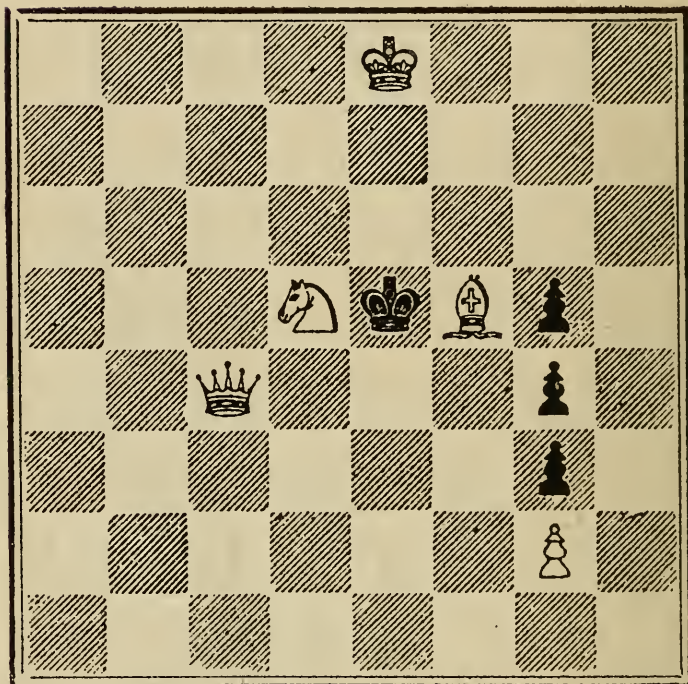
Carpenter's Chess Problems.

---

LXXII.

---

BLACK.



WHITE.

White mates in three moves.

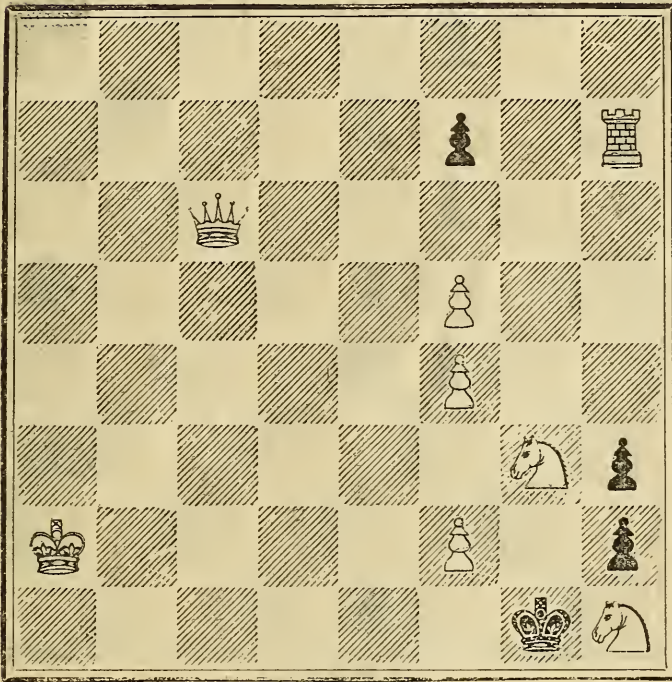
Carpenter's Chess Prob'ems.

---

LXXIII.

---

BLACK.



WHITE.

White mates in three moves.

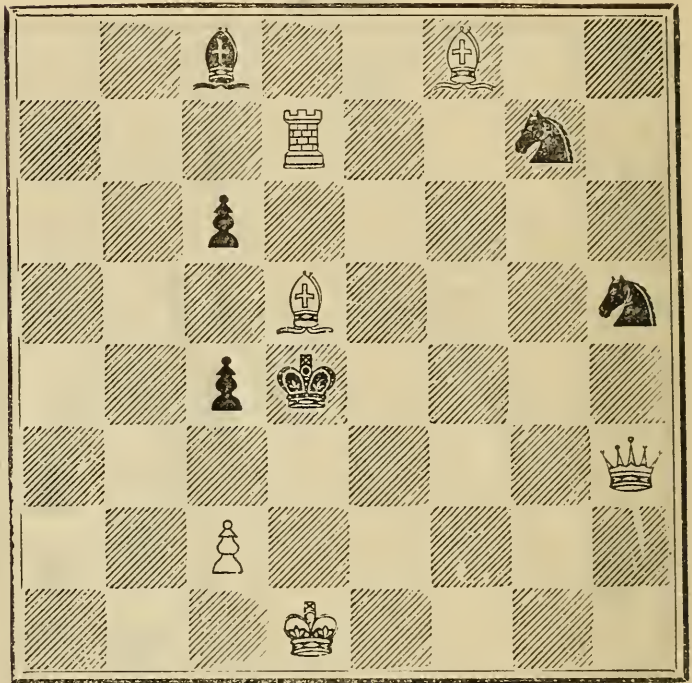
Carpenter's Chess Problems.

---

LXXIV.

---

BLACK.



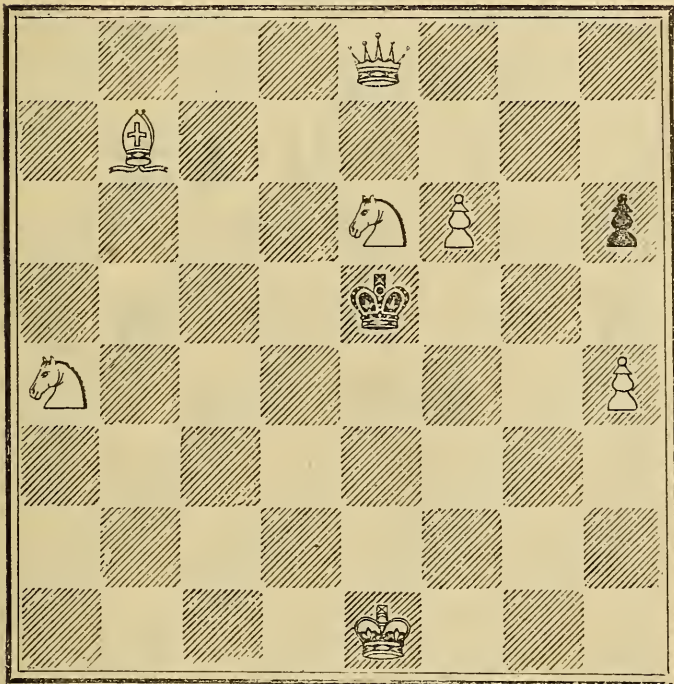
WHITE.

White mates in three moves.

LXXV.

---

BLACK.

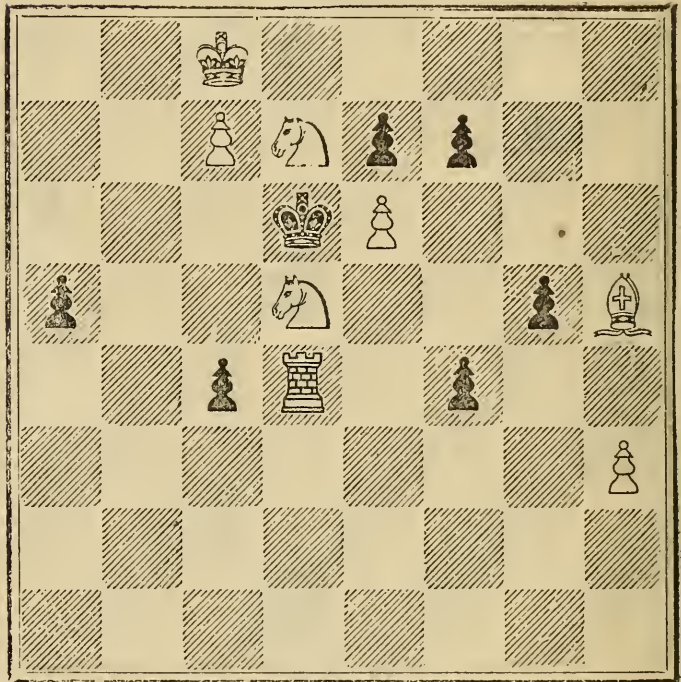


WHITE.

White mates in three moves.

LXXVI.

FLACK.



WHITE.

White mates in three moves.



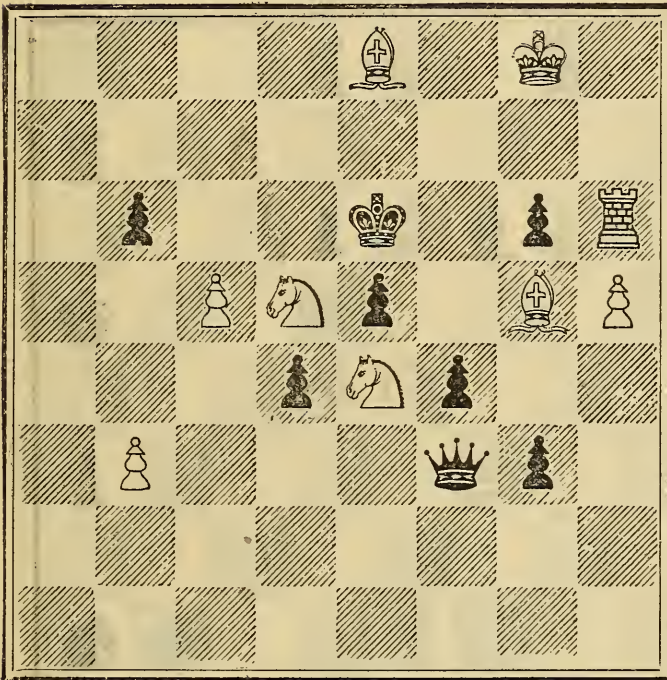
Carpenter's Chess Problems.

---

LXXVII.

---

BLACK.



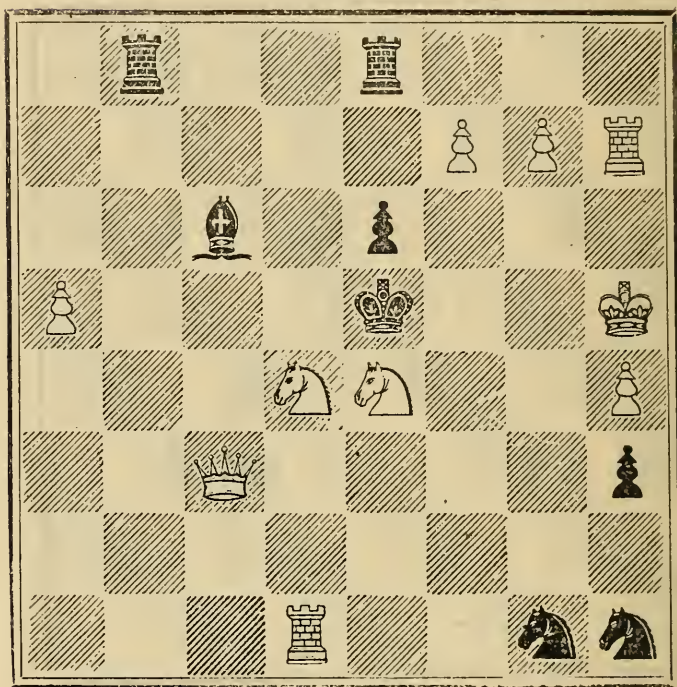
WHITE.

White mates in three moves.

LXXVIII.

---

BLACK.



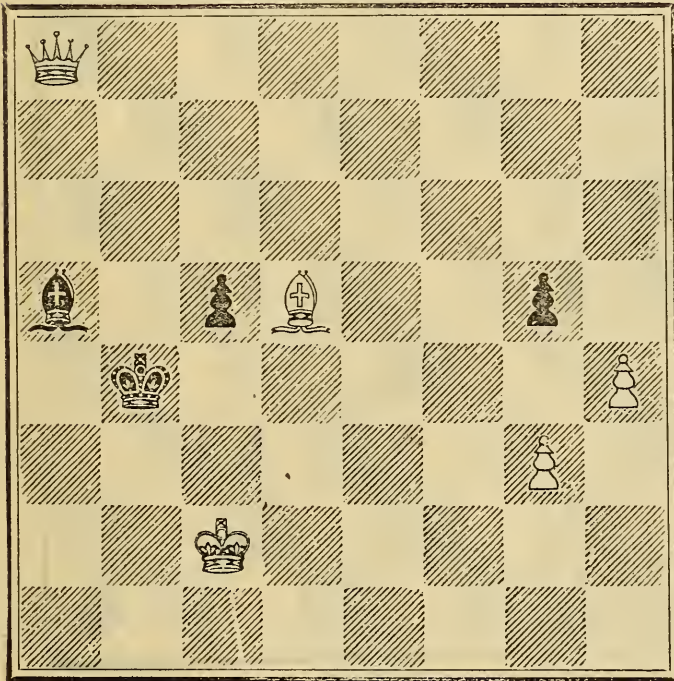
WHITE.

White mates in three moves.

LXXIX.

---

BLACK.



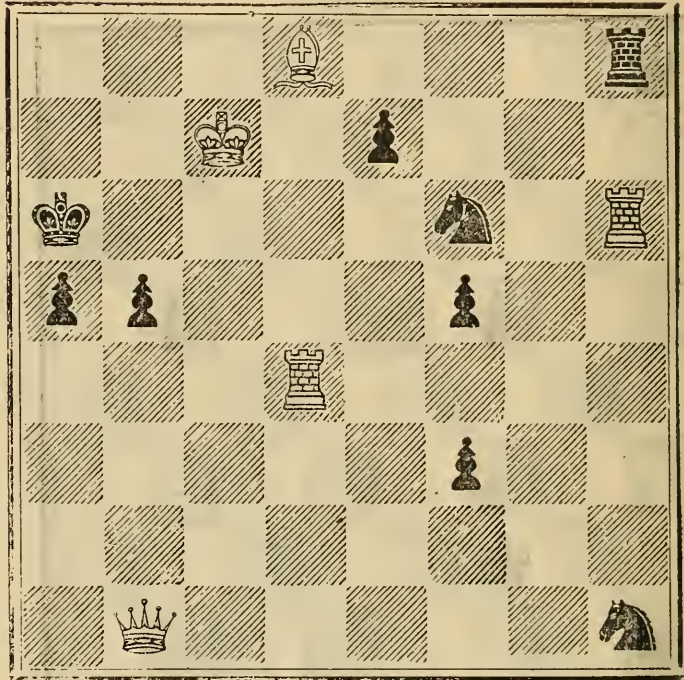
WHITE.

White mates in three moves.

Carpenter's Chess Problems.

LXXX.

BLACK.



WHITE.

White mates in three moves.

### Three-move Solutions.

1	1	R KR 1	K×R K B 7	2	KS 3 KRK 1
2	1	R KR 3	P×R	2	SS 4
3	1	RS 4	K B 3	2	P (Q) +
4	1	QS 1	P —	2	K B 5
5	1	QS 7	P —	2	KK 2
6	1	KK 2	K Q 5 K B 5 P×P	2	QS 5 SQB 6 Q×P
7	1	QR 7 +	K×Q K×P	2	KB 7 BB 6 +
8	1	BK 5	P×B P Q 6	2	Q QB 2 Q K 3
9	1	RQ 6	K×R K×P B×R	2	Q KB 7 QB 4 QQ 5 +
10	1	BK 5	K×B K B 5	2	QQ 8 QS 7
11	1	KK 2	any	2	QKS 1
12	1	KK 1	K Q 6	2	QKS 4
13	1	SQ 4	P×S or S K 1 K×S S QS 4	2	QS 5 Q QB 5 + SKB 6 +
14	1	QQ 1	KK 6 KK 4	2	SQ 3 QQ 7

### Three-move Solutions.

35	1	Q B 3	K×S (e 5)	2	P B 4
			K×S (e 6)		BB 6
36	1	P QB 5	P K 4	2	B KR 5
			KK 4		P Q 4 +
			P×B or P B 6		QR 7 +
37	1	B K 5	P×B	2	S KB 6 +
			KK 5		Q K 1 +
38	1	B Q 1	K×B	2	SK 3 +
			B Q 6		Q×B
			B×Q etc.		SK 3
			BS 6		S×S
39	1	Q Q 7	S×S	2	QQ 4 +
			KB 5		QQ 6 +
			BK 3		SQ 3 +
			BB 5 +		S×B +
			BQ 8 +		KK 3
			SS 5		QS 7 +
40	1	Q QR 7	K×QR	2	RS 5 +
			K×KR		RS 5 +
			P×QR		QKB 2 +
			P×KR		QQ 4 +
			BK 5		QR KS 5
			BKB 6		KR KS 5
41	1	Q B 5	P×Q	2	BQ 5

### Three-move Solutions.

42	1	R KB 6	B×R(f 6)	2	R KB 3
			R(f 7)×R		S K 7 +
			R(f 2)×R		R R 5 +
			B R 3		S B 4 +
			S×S		B×S +
43	1	Q K 4	S B 3	2	Q S 4
			S KB 1		S×SP
			S S 4		S S 3 +
44	1	R KB 1	K×B	2	S(Q 8) QS 7
			K B 2		R QS 1
45	1	Q K 6 +	K×Q	2	R B 5
			K B 5		R B 3 +
			K Q 5		R(S 7) S 3
46	1	S B 3	P×S	2	R B 2
47	1	Q B 5	P×Q	2	R S 5
48	1	B QB 6	K×QR	2	B QR 7
			K×KR		B Q 5
49	1	Q K 6	P×Q	2	QR R 4
			K×R		R S 4 +
			B Q 3		QRR 4
			P×KR		Q×P +
50	1	B KS 3	any	2	R(Q 3) Q 5
51	1	B QB 8	Q×B	2	R QB 4
			Q K 1		R×Q
			Q S 3		R K 5 +



## Three-move Solutions.

66	1	Q QS 1	S KB 4	2	Q K 4 +
			K × S		K R 2
			B B 7		B × P +
			S B 5		S S 3 +
			P K 5		R × R +
67	1	B S 3	P × R	2	Q × P +
			P KB 5		S × BP
			K × S		Q × P +
			K K 4		Q K 1 +
68	1	B S 5	P × B	2	S R 6 +
			K S 5		R Q 4 +
			P R 4		S Q 6
69	1	S K 4	K × P	2	Q R 4 +
			K Q 4		Q K R 3
			P —		Q QS 2
70	1	R KR 2	K × S	2	Q K 6
			K Q 6		Q K 8
			K × P		Q K S 4
			K Q 4		R R 4
71	1	Q KB 8	K Q 5		S QB 6 +
			K × P		Q B 6
72	1	S KB 6	K × S	2	Q QB 5
			K × B		S × P
			K Q 3		S KR 5





LIBRARY OF CONGRESS



0 020 237 544 3 ●