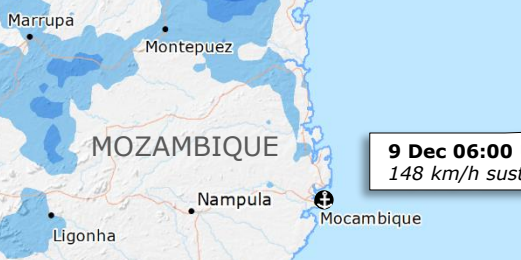


Madagascar, Mayotte, Comoros | Tropical Cyclone BELNA

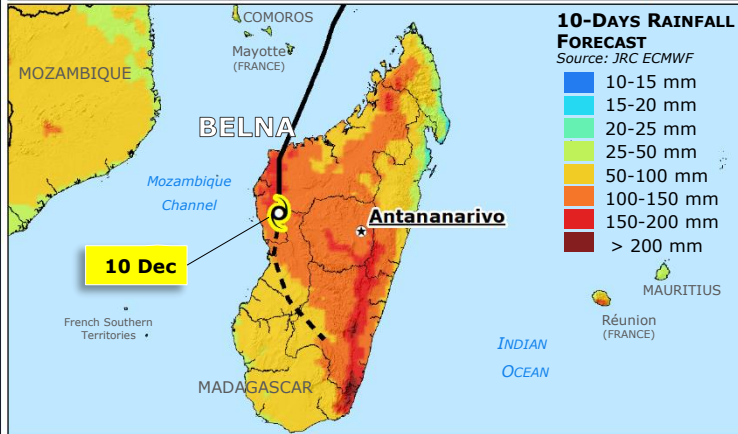
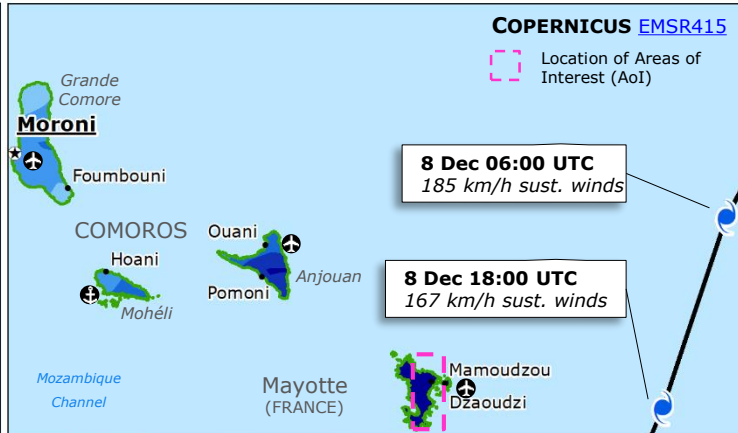
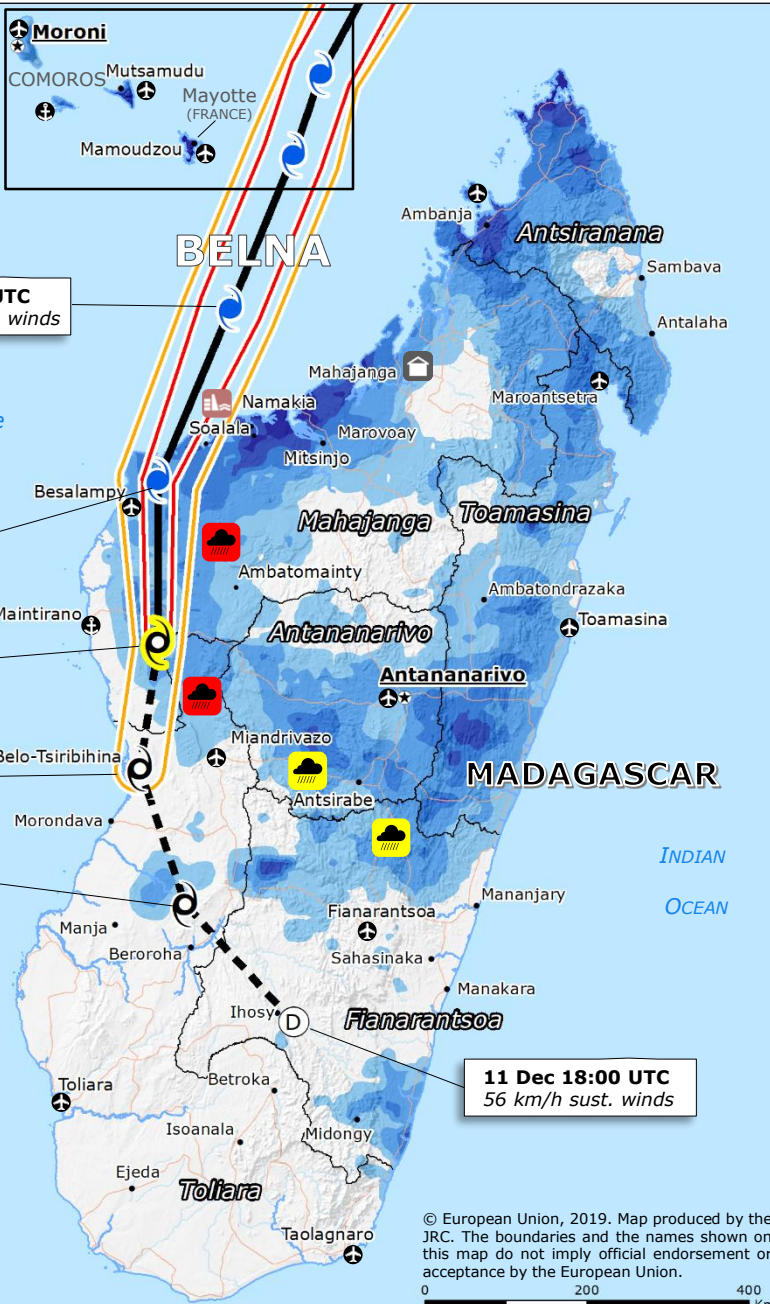
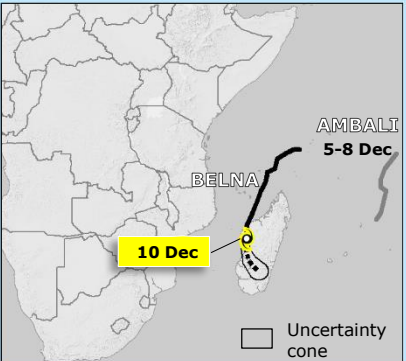
DG ECHO partners pre-positioned emergency items and personnel in the affected areas.



IMPACT OVERVIEW (MADAGASCAR)

- 2
- 3
- >1,400
- 170

Source: [UN OCHA](https://www.unocha.org/)



TROPICAL CYCLONE
Source: [GDACS](https://www.gdacs.org/), [JTWC](https://www.jtwc.org/)

- Current position
- 5-days forecast track
- Past track

INTENSITY

- < 63 km/h
- 63-118 km/h
- ≥ 119 km/h

WIND BUFFER

- 93-118 km/h
- > 118 km/h

PAST 7-DAYS RAINFALL ACCUMULATION
Source: NASA-GPM

- 100-250 mm
- 75-100 mm
- 50-75 mm
- 25-50 mm
- 10-25 mm

COMMUNITY ADVISORY
Source: [BNGRC](https://www.bngrc.org/)

- Heavy rain warning
- Heavy rain advisory

- Fatalities
- Missing people
- Displaced people
- Evacuated people
- Accommodation site
- Sea dyke damaged
- Main port
- Main airport

Source: [UN OCHA](https://www.unocha.org/)