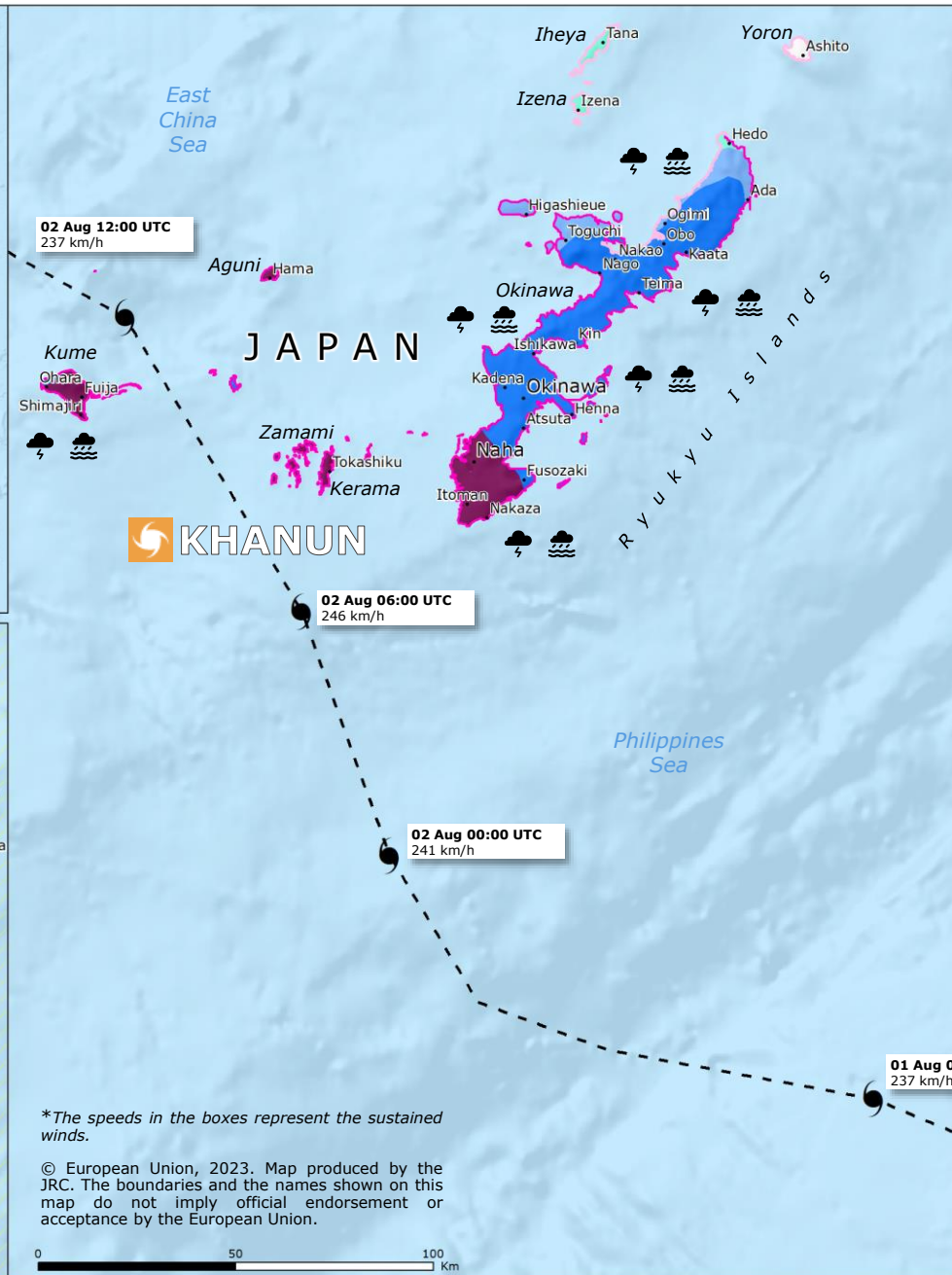
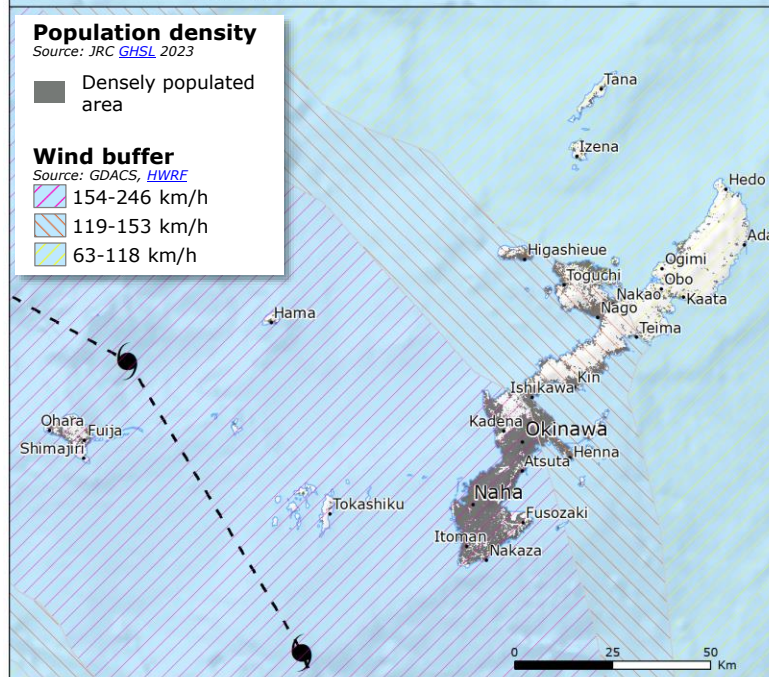
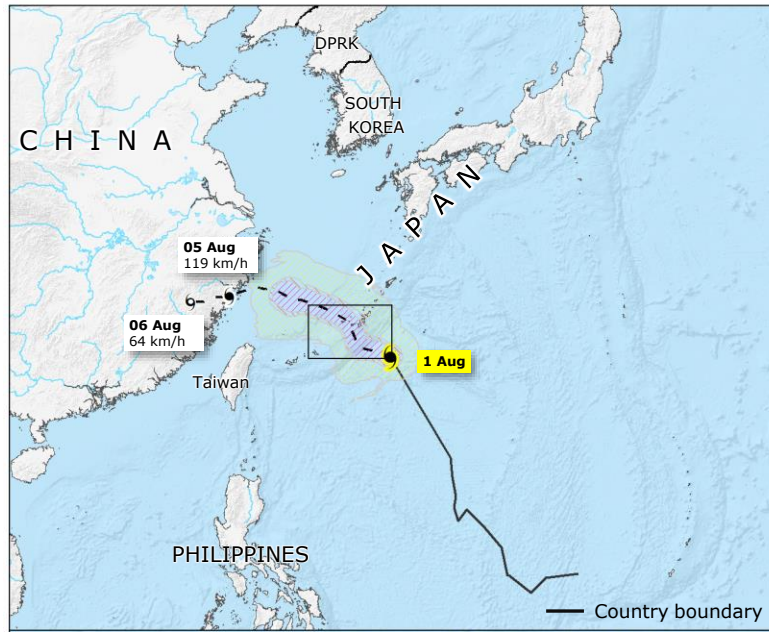


Japan | Tropical cyclone KHANUN



Potential exposed population in Japan
 Source: GDACS, HWRF

- to rainfall 50 - 250 mm
 ~ **649 000**
- to rainfall 250 - 500 mm
 ~ **645 000**
- to wind 63-119 km/h
 ~ **76 077**
- to wind > 119 km/h
 ~ **1 259 433**

Tropical cyclone
 Source: GDACS, HWRF

- Current position
- - - Forecast track
- Past track
- ☪ 63-118 km/h Tropical storm
- ☪ 119-246 km/h Typhoon

Rainfall accumulation over the entire track
 27 July - 6 August
 Source: GDACS, HWRF

- 250-500 mm
- 100-250 mm
- 50-1000 mm
- 25-50 mm

Storm surge
 Source: GDACS, HWRF

- <0.5 m
- 0.5-1 m

☪ GDACS Orange alert

Community advisory
 Source: JMA

- ☪ Storm warning
- ☪ Storm surge warning

*The speeds in the boxes represent the sustained winds.

© European Union, 2023. Map produced by the JRC. The boundaries and the names shown on this map do not imply official endorsement or acceptance by the European Union.

