



# SLUB

Wir führen Wissen.

# Open Citizen Science @ SLUB

## Terms and definitions

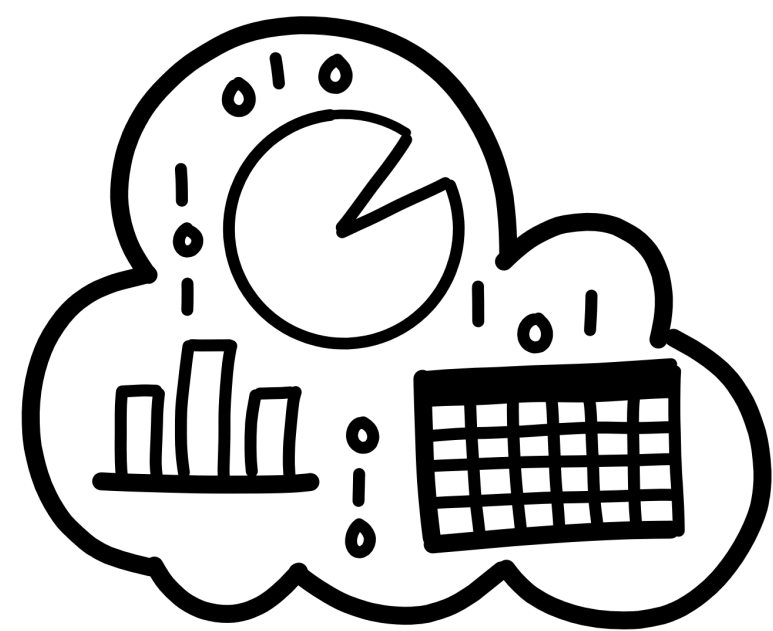


### WHAT IS OPEN CITIZEN SCIENCE?

A Citizen science approach to open cultural data and the open presentation of the resulting findings for subsequent use and further work by others

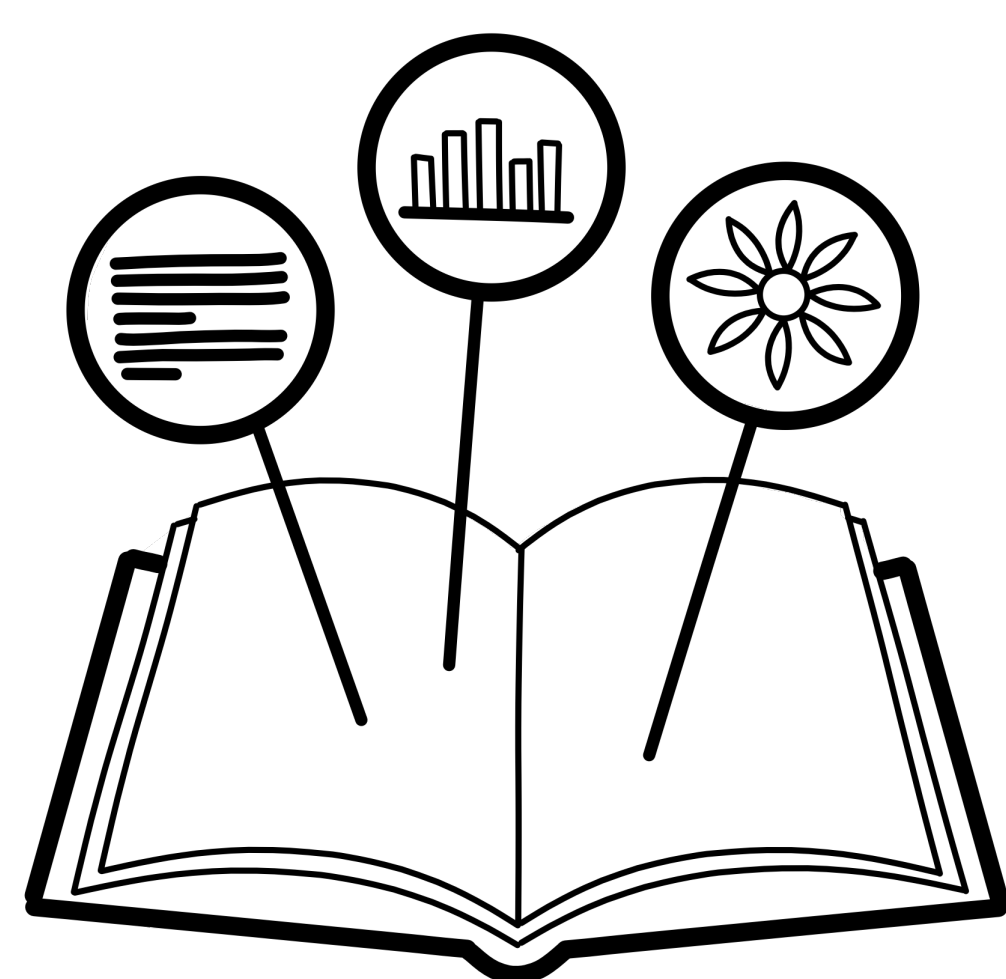
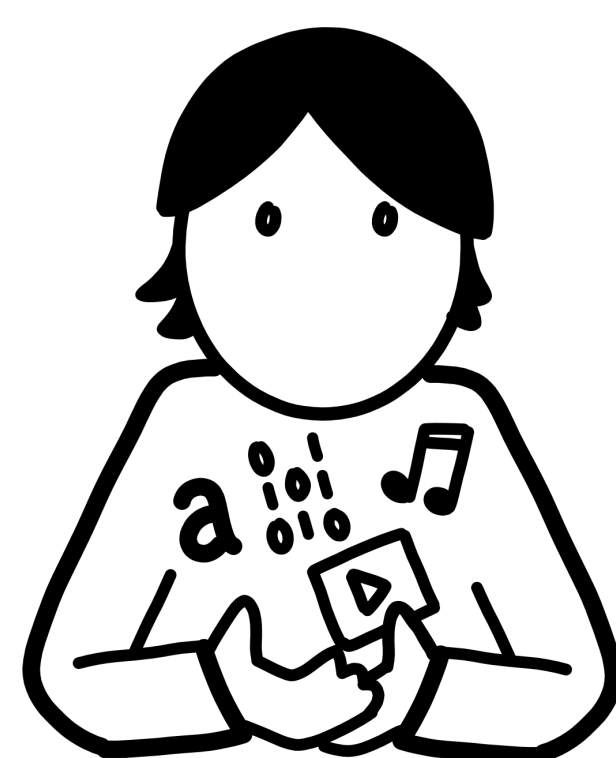
### AND WHAT IS OPEN CULTURAL DATA?

- digitised publications and objects from GLAM institutions (galleries, libraries, archives, museums), i.e. the digital images of originally analogue holdings, but also born-digital publications
- their openly indexed content and metadata
- their open and collaborative publication, curation and editing
- their products: copies, versions, remixes, Open Educational Ressources



## Our focus

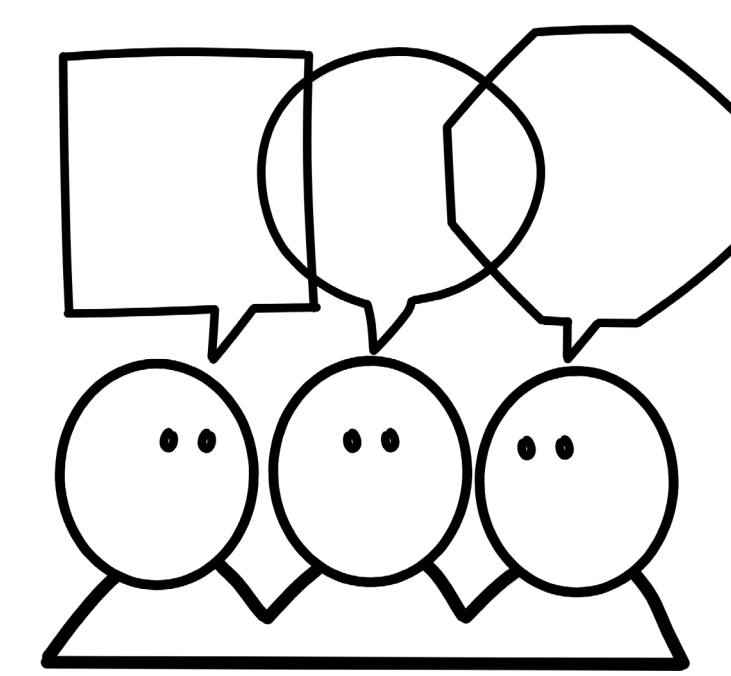
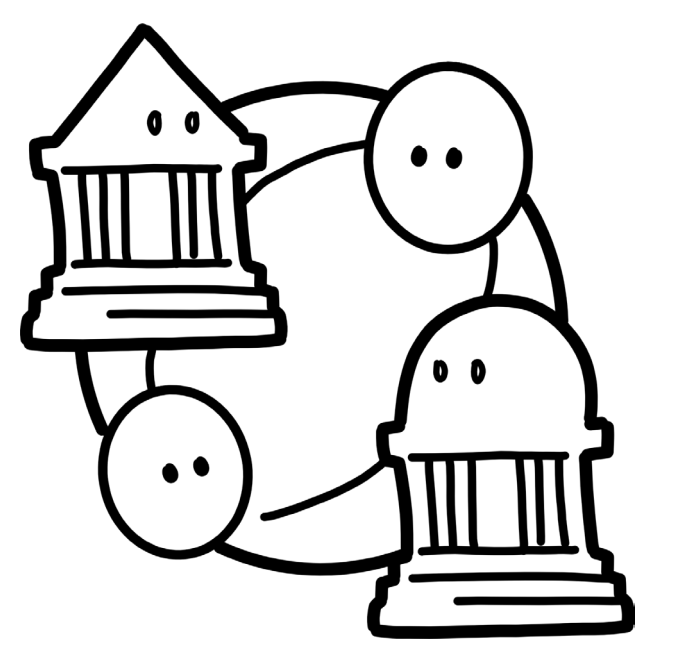
- local and regional open data sets of SLUB and other heritage institutions via their respective digital collections and linked contextual datasets worldwide
- communities of practice editing historic publications and its open metadata, especially via the open framework of the Wikiverse



- open bibliographic metadata for knowledge communication and science communication in higher education, research and development
- services for campus communities: research project design, method counselling with focus on community building, crowdsourcing and communication

## Our aims

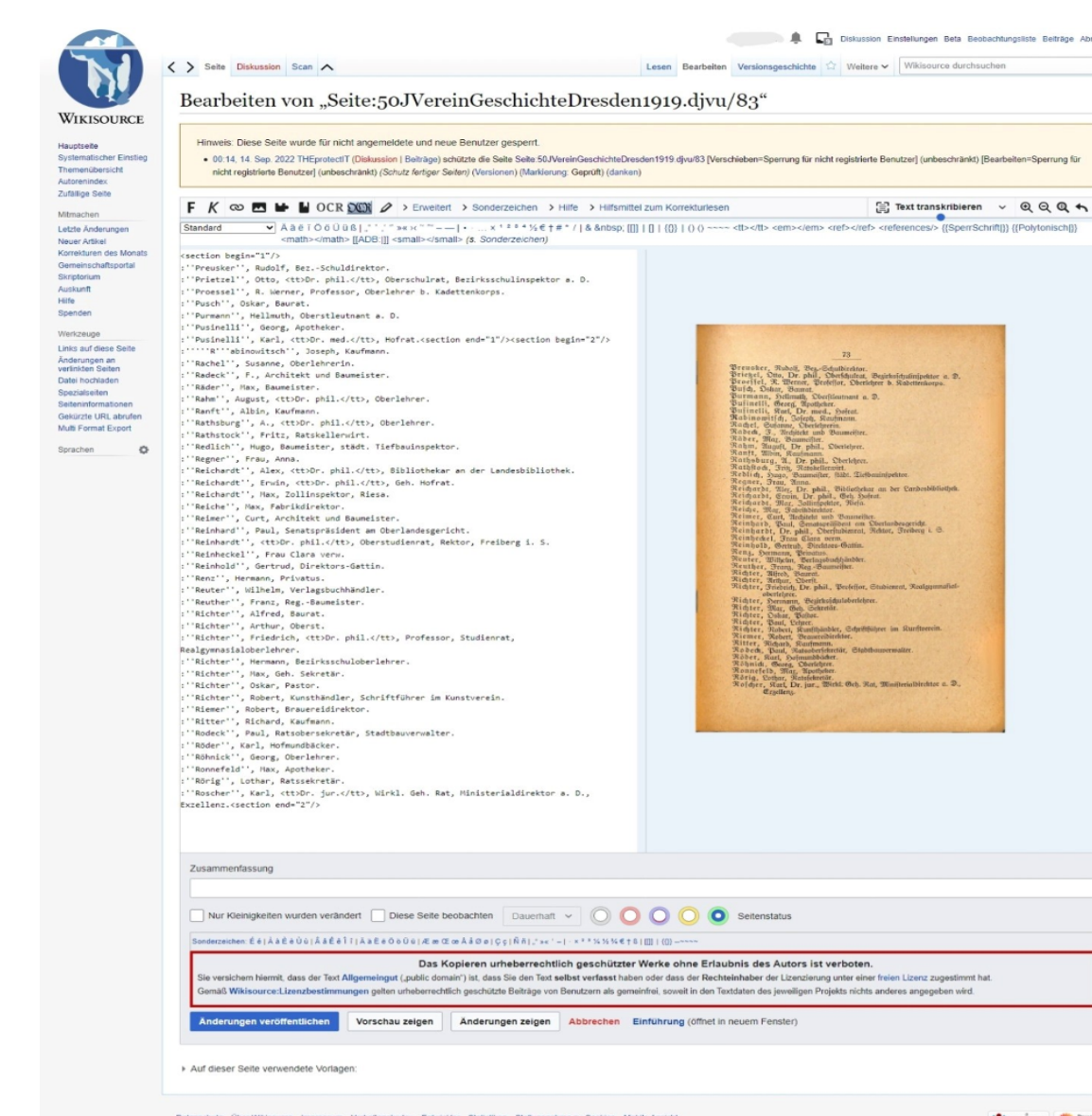
- serving as an interface and contact point between academic science and society
- providing knowledge spaces (on site as well as digitally) and educational tools and methods and therewith collaborating with citizen data initiatives and scientists



- promoting openness in citizen as well as in professional science
- fostering Open (Citizen) Science thinking and practice with library staff

## Example projects

- #FetzigesGeschichtszeugs: transcribing and indexing the historical publications of the Dresden Historical Society and its predecessors (partner: Dresdner Geschichtsverein e.V.)



- Dresdner Totengedenkbuch: transcribing and structuring historical index cards with the names of the Dresden dead of the First World War (partners: Verein für Computergenealogie, Dresdner Verein für Genealogie)
- Die Datenlaube: bibliographical indexing of the historical illustrated magazine 'Die Gartenlaube'
- Friedrich von Boetticher's 'Malerwerke des neunzehnten Jahrhunderts': editing and indexing historical volumes and illustrated magazines on 19th century art history (partner: Wikisource admin Andreas Wagner)

## Further Reading

Bemme, Jens/Munke, Martin: Open Citizen Science: Leitbild für kuratorische Praktiken in Wissenschaftlichen Bibliotheken. In: Klaus Ulrich Werner (Hrsg.): Bibliotheken als Orte kuratorischer Praxis. Berlin, Boston: De Gruyter Saur, 2024, 165-200. DOI: 10.1515/9783110673722-013

Bonn, Aletta et al.: White Paper Citizen Science Strategy 2030 for Germany. Berlin, Leipzig: Helmholtz Association, Leibniz Association, Fraunhofer Society, universities and non-academic institutions, 2022. DOI: 10.5281/zenodo.7117771

Hahn, Helene: Kooperativ in die digitale Zeit – wie öffentliche Kulturinstitutionen Cultural Commons fördern. Eine Einführung in offene Kulturdaten. Korrigierte Fassung. Berlin: digiS – Servicestelle Digitalisierung Berlin, 2019. URN: urn:nbn:de:0297-zib-59131

Munke, Martin: Offene Kulturdaten regional. Überlegungen zur Rolle von Regionalbibliotheken unter den Bedingungen der Digitalität. In: Zeitschrift für Bibliothekswesen und Bibliographie 70 (2023), H. 2, 74-83. DOI: 10.3196/186429502070229

## Authors

Jens Bemme and Martin Munke, Saxon State and University Library, Saxonica and map collection, saxonica@slub-dresden.de

## Design

Ramona Ahlers-Bergner, Saxon State and University Library, public relations, oeffentlichkeitsarbeit@slub-dresden.de

## Licences



CC BY 4.0: the poster itself and the Wikisource screenshot



CC 0 1.0: all icons

## DOI

10.5281/zenodo.13382765