

Historic, archived document

Do not assume content reflects current scientific knowledge, policies, or practices.

1926/27
JAN 11 1927
Howard Rose Co.

Hemet

Cal.

ROSE BUSHES

Winter Harvest

Third List - - Revised

November 15, 1926



MASTER LIST

1926-1927

Grade No. 1---Teas, Hybrid Teas and Polyanthas, 18 inches and up to 24 inches. Climbers and Hybrid Perpetuals, 24 in. and up to 30 in.

Grade No. 1½---Teas, Hybrid Teas and Polyanthas, 12 inches and up to 18 inches. Climbers and Hybrid Perpetuals, 18 in. and up to 24 in.

Order in multiples of TEN. Ten or more at these prices.

* Grafted Varieties	No. 1 Each	No. 1½ Each
* Admiral Ward, HT, velvety-crimson.....	30c	20c
American Beauty, H.P. Red	30c	20c
Angelus, HT, white	25c	17c
Anna de Diesbach, HP, carmine-pink.....	30c	20c
* Annie Laurie, HT, flesh-pink	30c	20c
Antoine Revoire, HT, rose-flesh	25c	17c
* Arthur R. Goodwin, HT, copper.....		20c
Baby Anna Mueller, P, pink	25c	17c
Baby Catherine Zeimet, P, white	25c	17c
Baby Doll, P, yellow edged pink	25c	17c
Baby Dorothy, P, pink	25c	17c
Baby Edith Cavell, P, deep crimson	25c	17c
Baby Ellen Paulson, P, dark pink	25c	17c
Baby Erna Teschendorf, P, deep crimson.....	30c	20c
Baby Etoile Luisante, P, shrimp-pink	25c	17c
Baby Eugene Lamesch, P, orange-yellow.....	30c	20c
Baby LaMarne, P, salmon-rose.....		17c
Baby Louise Welter, P, pink	30c	20c
Baby Mme. N. Levavasseur, P, crimson.....	25c	17c
Baby Orleans, P, geranium pink.....		17c
Baroness de Rothschild, HP, pink	30c	20c
Bessie Brown, HT, creamy white	25c	17c
Betty, HT, coppery rose	25c	17c
British Queen, HT, White.....		17c
* Candeur Lyonnaise, HP, white	30c	20c
Captain Christy, HP, silver-pink	25c	17c
Captain F. Bald, HT, (1919), Crimson, velvety- black, very fragrant and vigorous.....	25c	17c
Captain Hayward, HP, crimson	30c	20c
Chas. K. Douglas, HT, (1919), Flaming scarlet, flushed velvety-crimson, sweetly scented. Vig- orous, upright grower, very fine.....	25c	17c
Clara Watson, HT, flesh rose	25c	17c
Clic, HP, flesh	30c	20c
Clothilde Soupert, TP, white	20c	14c
Col. O. Fitzgerald, HT, velvety-crimson.....	25c	17c
Columbia, HT, pink	30c	20c
* Columbia, HT, pink	30c	20c
Columbia Silver, HT, silver-pink	30c	20c
* Columbia Silver, HT, silver-pink	30c	20c
Commonwealth, HT, deep pink	25c	17c
* Commonwealth, HT, deep pink	25c	17c
Conrad F. Meyer, HR, deep pink	25c	17c
Coquette des Alps, HN, white	25c	17c
Countess Clanwilliam, HT, pink	25c	17c
Countess of Gosssford, HT, salmon pink.....	25c	17c
Countess of Warwick, HT, (1919,) Color lemon-yel- low, edged pink; erect grower	25c	17c
Crimson Queen, HT, Crimson.....	20c	14c
Crusader, HT, velvety-crimson	25c	17c
Duc de Rohan, HP, crimson	30c	20c

Duchess of Albany, HT, red	25c	17c
Duchess de Brabant, T, pink	25c	17c
Duchess of Wellington, HT, yellow.....	25c	17c
Ecarlate, HT, scarlet-red	25c	17c
Edel, HT, (1919,) White flowers that open ivory-white. Strong and free flowering.....		17c
Edith Part, HT, rosy-red	25c	17c
Edward Mawley, HT, crimson	25c	17c
*Eldorado, Per, golden-yellow.....		25c
Esme, HT, creamy-white	25c	17c
Etoile de France, HT, velvety-crimson.....	25c	17c
Eugene Furst, HP, crimson	30c	20c
Fisher Holmes, HP, crimson	30c	20c
F. J. Grootendorst, PR, red.....	20c	14c
Francois Levet, HP, deep rose	30c	20c
Frank W. Dunlop, HT, Dark pink.....	25c	17c
Frau K. Druschki, HP, white,	35c	25c
General Jacqueminot, HP, crimson		20c
General McArthur, HT, scarlet	25c	17c
General S. A. Janssen, HT, carmine	25c	17c
General Washington, HP, red		20c
George Arends, HP, pink	25c	17c
*George Dickson, HP, dark crimson		20c
George Elger, TP, yellow	25c	17c
*Gladys Holland, HT, buff pink	25c	17c
*Gold Mine, HT, (1925,) Golden-yellow with orange-bronze heart, a strong grower, and has fine lasting qualities. It is a seedling of Mrs. Aaron Ward.	40c	30c
Gruss an Tepitz, HT, scarlet	20c	14c
*Hadley, HT, crimson		20c
*Harrisons Yellow, golden yellow	30c	20c
Harry Kirk, T, yellow	25c	17c
Heinrich Munch, HP, soft pink	30c	20c
Helen Gould, HT, red	25c	17c
Helen Taft, HT, pink	25c	17c
Henrietta, HT, orange-crimson	30c	20c
Hermosa, C, pink	25c	17c
His Majesty, HP, crimson	30c	20c
*Hoosier Beauty. HT, crimson,.....	25c	17c
Hortulanus Budde, HT, (1919), Dark red. semi-double. Blooms in great profusion throughout the summer. Very fine.....	30c	20c
*Hortulanus Fiet, HT (1919,) Buds long apricot yellow with coppery edges; flower salmon-rose. Growth medium, very floriferous. Grand	30c	20c
Hugh Dickson, HP, crimson	30c	20c
*Hugonis, lemon-yellow	35c	25c
Irish Elegance, HT, apricot	25c	
*Irish Fireflame, HT, copper	30c	
John Hopper, HP, rose	30c	20c
Jon J. L. Mock, HT, cherry red	25c	17c
Jubilee, HP, crimson	30c	20c
*Juliet, AB, gold to red	35c	25c
Kaisrine A. Victoria, HT, white	30c	20c
*Kaiserine A. Victoria, HT, white	30c	20c
Killarney, HT, shell pink	25c	17c
Killarney Brilliant, HT, crimson	30c	20c
Killarney, Dbl White, HT, White.....		17c
Killarney White, HT, White.....		17c
King George V, HP, crimson	30c	20c
K of K, HT, scarlet	25c	17c
Lady Ahtown, HP, pink		17c
Lady Hillingdon, T, apricot	25c	17c

Lady Ursula, HT, pink	25c	17c
La Detroit, HT, pink	25c	17c
La France, HT, silver-pink	25c	17c
Laurent Carle, HT, carmine	25c	17c
*Los Angeles, HT, pink to coral	35c	25c
Magna Charta, HP, bright rose	25c	17c
Maman Cochet, T, pink	25c	17c
*Maman Cochet, T, pink	25c	17c
Maman Cochet White, T, white	25c	17c
*Maman Cochet White, T, white	25c	17c
*Marshall P. Wilder, HP, red	30c	20c
*Mary Countess Ilchester, HT, carmine	30c	20c
*Miss Amelia Gude, HT, yellow	35c	25c
Mme. Able Chatney, HT, rose to salmon	25c	17c
*Mme Alexandra Dreux, Per, (1921,) Brilliant golden-yellow, full and of good form. Growth vigorous, erect, free flowering	40c	30c
Mme. Butterfly, HT, salmon		20c
*Mme. Butterfly, HT, salmon		20c
Mme. Caroline Testout, HT, pink	25c	17c
Mme. Caroline Testout Wht., HT, white	25c	17c
Mme. Cecil Brunner, P, pink	25c	17c
Mme. Chas. Wood, HP, cherry red	30c	20c
Mme. Ed. Herriot, HT, copper to coral-red	30c	20c
*Mme. Ed. Herriot, HT, copper to red	30c	20c
Mme. Jenny Gillemot, HT, yellow	30c	20c
Mme. Jules Grolez, HT, rose	25c	17c
Mme. Leon Pain, HT, silver-pink		17c
Mme. Pernet-Ducher, HT, yellow	25c	17c
Mrs. A. R. Waddell, HT, saffron	25c	17c
Mrs. Chas. Bell, HT, pink	25c	17c
Mrs. Chas Lamplough, HT, (1920), lemon-yel- low	20c	14c
Mrs. Chas. Russell, HT, pink	25c	17c
*Mrs. George Shawyer, HT, pink	25c	17c
*Mrs. Henry Winnett, HT, crimson	25c	17c
*Mrs. H. R. Darlington, HT, (1920,) Creamy-white; fragrant, free; perfect form; good grower	25c	17c
Mrs. John Laing, HP, soft pink	30c	20c
*Mrs. Wm. C. Egan, HT, pink	35c	25c
*Old Gold, HT, orange	30c	20c
Ophelia, HT, salmon-pink		20c
*Ophelia Golden, HT, yellow	35c	25c
Ophelia Supreme, HT, rose pink	30c	20c
*Padre, HT, copper-scarlet	35c	25c
Paul Neyron, HP, rose	30c	20c
Perle d'Or, P, yellow	25c	17c
*Premier, HT, pink	30c	20c
*Premier Red, HT, red	30c	20c
President Wilson, HT, pink	25c	17c
Prince C. de Rohan, HP, crimson	30c	20c
Prince de Bulgarie, HP, pink to copper		17c
Prince E. C. de Arenberg, HT, scarlet	25c	17c
Queen Beatrice, HT, pink	25c	17c
Radiance, HT, pink,	25c	17c
Radiance Red, HT, crimson	30c	20c
Rose Dawn, HT (1925,) Bud large, long-pointed; soft rose-flesh with yellow base. Foliage abund- ant, light green, disease-resistant. Profuse bloomer.	25c	17c
*Rose Dawn, HT, same as above	25c	17c
Rose Marie, HT, watermelon red	30c	20c
*Rose Marie, HT, watermelon red	30c	20c
Sensation, HT, red	25c	17c

Sir Thomas Lipton, RH, white	25c	17c
*Soleil d'Or, AB, yellow	35c	25c
Souv. de Cl. Pernet, Per. (1920) yellow.....	40c	30c
*Souv. Cl. Pernet, Per, (1920) yellow.....	40c	30c
*Souv. de Georges Pernet, Per, red	30c	20c
Sunburst, HT, yellow	30c	20c
*Sunburst, HT, yellow	30c	20c
Templar, HT, (1925,) red	30c	20c
*Templar, HT, (1925,) red	30c	20c
Theresa, HT, orange	30c	20c
*Tipperary, HT, yellow	30c	20c
Ulrich Brunner, HP, red,	30c	20c
Victory, HT, (1920,) Glowing scarlet, large bloom, pointed, on long stems; semi-double. A fine free- growing bedder. Gold medal N. R. S.....	30c	20c
Viscountess Folkstone, HT, cream.....	20c	14c
Wellsley, HT, pink	25c	17c
*Willowmere, Per, pink	30c	20c
*Wm. F. Dreer, HT, pink to yellow.....		25c
William R. Smith, HT, cream	25c	17c
Winnie Davis, HT, apricot	25c	17c

CLIMBERS

Alida Lovett, HW, pink	25c	17c
American Pillar, P, pink	20c	14c
Aviateur Bleriot, HW, yellow	25c	17c
Banksia White, B, white	25c	17c
Banksia Yellow, B, yellow	25c	17c
Belle of Portugal, HG, pink	35c	25c
Bess Lovett, W, crimson	20c	14c
Bonnie Prince, HW, white	20c	14c
Cherokee Pink, pink	25c	17c
Cherokee Ramona, red	25c	17c
Christine Wright, W, pink	20c	14c
Cl. Able Chatenay, HT, rose	25c	17c
Cl. American Beauty, HN, red	25c	17c
Cl. Baby Rambler, P, crimson	25c	17c
Cl. Belle Siebrecht, HT, pink	25c	17c
Cl. Caroline Testout, HT, pink	25c	17c
Cl. Cecil Brunner, P, pink	25c	17c
*Cl. Chateau de Clos Vougeot, HT, (1920,) a sport of the dwarf bush variety; most valuable as a velvety-black climbing rose.	35c	25c
Cl. Duchess of Wellington, HT, (Howard Rose Co., 1924) yellow	35c	25c
Cl. Etoile de France, HT, red	25c	17c
*Cl. General McArthur. HT, red	30c	20c
Cl. Gruss an Teplitz, HT, scarlet	25c	17c
*Cl. Hadley, HT, crimson	30c	20c
*Cl. Hoosier Beauty, HT, crimson	30c	20c
Cl. Jon J. Mock, HT, cherry-red	25c	17c
Cl. K. A. Victoria, HT, white	25c	17c
*Cl. Lady Hillingdon, T, apricot	30c	20c
*Cl. Los Angeles, HT, pink to coral.....	50c	
Cl. Maman Cochet, T, pink	25c	17c
Cl. Maman Cochet White, T, white	25c	17c
Cl. Mme. E. Herriot. HT (1921).....	50c	40c
*Cl. Mrs. Aaron Ward. HT. Indian-yellow.....	50c	
*Cl. Mrs. Geo. Sawyer, HT, pink	30c	20c
Cl. Ophelia, HT, salmon	25c	17c
*Cl. Sunburst, HT, yellow	30c	20c
Cl. Winnie Davis, HT, pink	25c	17c

MASTER LIST (Continued)

Crimson Rambler , P, crimson	25c	17c
Dorothy Perkins , HW, pink	20c	14c
Dorothy Perkins White , HW, white	20c	14c
Dr. W. Van Fleet , HW, pink	25c	17c
* Duchess d'Auerstadt , T, yellow	30c	20c
Emily Gray , HT, yellow	30c	20c
Excelsa , W, crimson		14c
Flower of Fairfield , P, crimson	25c	17c
Gold of Ophir , N, yellow	20c	14c
Heart of Gold , HW, dark crim. to yellow	25c	17c
Hiawatha , W, carmine	20c	14c
Lady Gay , W, pink	20c	14c
Mary Wallace , HW, pink	25c	17c
Mme. Alfred Carriere , N, white	20c	14c
Pauls Scarlet Climber , W, crimson	25c	17c
Purity , HW, (1920) Pure white	25c	17c
Rene M. Henriette , N, crimson	20c	14c
* Reve d'Or , N, buff	25c	17c
Roserie , M, deep pink	20c	14c
Shower of Gold , W, yellow	30c	20c
Silver Moon , W, white	25c	17c
Tausendschoen , P, white to pink	20c	14c
Violetta , HW, (1921,) Flowers pure deep violet, produced in large trusses. This rose is consid- ered as an improvement of <i>Veilchenblau</i> on ac- count of its warmer color and better habit of growth.	25c	17c
* Wm. A. Richardson , N, yellow	25c	17c

NOVELTY LIST

Good - - - Medium - - - Indifferent

(Quantities Limited)

Some varieties will be discarded the coming season; others, as they prove worthy, will be produced in larger quantities and placed on our MASTER LIST.

	No. 1	No. 1½
* Admiration , HT, 1922, cream shaded vermillion	35c	25c
* Amelia de Bethune , Per, 1923, coral red to cochineal carmine	35c	25c
* Cambria Per, 1921, Apricot with crimson markings	25c	17c
* Comtesse de Cassagne , HT, 1919, Coppery-pink to clear rose and yellow	25c	17c
Covent Garden , HT, 1919, Deep crimson	35c	25c
* E.P.H. Kingma , Per, 1919, deep apricot		17c
Evelyn , HT, 1918, white shaded rose	35c	25c
* Evening Star , Per, 1920, golden yellow		25c
* Florence L. Izzard , Per, 1923, butter-cup yellow	50c	40c
* Geisha , Per, 1920, Deep orange-yellow		20c
* Georges Clemenceau , Per, 1919, Bright orange to carmine	50c	40c
* Gorgeous , HT, 1915, orange-yellow	35c	25c
Janet , HT, 1915, salmon flesh	25c	17c
* Joseph Baud , HT, 1919, orange-yellow	35c	25c

* Jules Tarbart, Per, 1920, salmon-pink....	00	40c
* Leader, HT, 1924, cerise	35c	25c
* Ludwig Moller, HP, 1914, light-yellow....	35c	25c
Mme A Chatenay Crimson, HT, 1916, crim	25c	17c
Mme. C. Brunner Rose, P, 1918, rose-color	25c	17c
Mme C. Brunner White, P, 1909, White....	25c	17c
* Mme. Mallerin, HT, 1924, Scarlet-crim'n.	50c	40c
Mme. Raymond Poincare,	35c	25c
Mr. P. L. Baudett, HT, 1916, carm-rose....	25c	17c
* Mrs. Farmer, Per, 1918, Indian-yellow to apricot	35c	25c
* Mrs. H. D. Green, Per, 1918, Reddish-bronze to copper-pink	25c	17c
Mrs. Henry Morse, HT, 1919, Pink shaded salmon	25c	17c
Othello, HP, 1911, deep red	25c	17c
Papa Gontier, HT, 1883, rosy-crimson....	25c	17c
* President Cherioux, Per 1922, coral-red shaded yellow	35c	25c
* Princess Marie Jose, HT, 1924, orange....	50c	40c
Red Letter Day, HT, 1914, scarlet-crim....	25c	17c
* Reims, HT, 1924, nankeen to apricot....	50c	40c
* Rhea Reid, HT, 1908, velvety red.....	35c	25c
* Rosette Delizy, HT, 1922, Cadmium-yellow with apricot reflexes.....	35c	25c
Safrano, T, 1879, bright apricot	25c	17c
* Souv. de Mme. Louis Crette, Per, 1923, Golden yellow to coral	50c	40c
Souv. de President Carnot, HT, 1894, White shaded rosy-flesh; large, semi-double....	25c	17c
* Sunstar, HT, 1921, Deep orange to yellow	35c	25c
* W.E. Wallace, HT, 1922, golden-yellow	35c	25c
William Notting, HT, 1904, rosy-cerise....	25c	17c

TERMS

Time of Shipment (Winter)---

Orders "for immediate shipment" are filled as fast as possible after the first of January in rotation as booked. Large assortments can never be completed in first shipment. Our Concrete Cellars enable us to hold stock in good condition through the season, but we cannot promise to hold any later than March 15th; however we prefer to ship all out in January and February. (Orders for eastern states can be held in St. Louis storage until April 1st).

To the Trade Only—Prices shown are for first-class stock of the grade named, and are subject to change without notice. No charge for packing.

The use of printed stationery as protection is desirable. If it is not used, the purchaser should state clearly his position. We print only wholesaler trade lists, and do not desire or solicit retail orders.

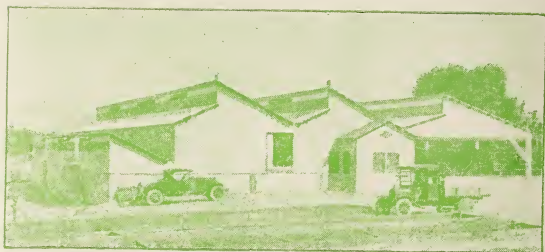
Our terms are cash, or satisfactory references before shipment. To established nurserymen and florists known to us, or to those who have necessary rating, credit will be granted on the following terms: 60 days net f. o. b Hemet, California, 3% discount for cash with order or before shipment; 2% in 10 days; 1% in 30 days.

Substitution—We do not substitute unless instructed to do so, and then label true to name. Customers will save time by naming a second choice, to be supplied only when first choice is sold out.

Pro Rata—As it is almost impossible to count Roses in the field when partly grown, there is a feature of uncertainty about all orders booked before digging. Consequently we reserve the right to fill such pro rata.

Genuineness—We exercise great care to keep all varieties true to name and will replace, on proper proof, all stock that may prove otherwise, but it is mutually agreed that we shall not be liable for any amount greater than the original price of the stock. All quotations made subject to stock being unsold when order is received, or loss by any and all unavoidable causes. Freight shipments travel at risk of purchaser.

Express—New rates from Hemet to Salt Lake, \$4.40; Denver, \$6.30; Kansas City, \$7.80; Des Moines, \$8.40; St. Louis, \$9.05; Chicago, \$9.45; St. Paul, \$9.45; Cincinnati, \$10.15; Washington, \$11.65; Philadelphia, \$12.00; New York, \$12.15; Boston, \$12.65. Our No. 1 roses weigh, packed, about 360 pounds per 1000 plants. In large lots these rates can be applied, but bales weighing less than 100 pounds cost more.



Two years ago (1924) this house seemed adequate for ALL needs; 9000 sq. feet cellar space besides second story.

Below we show present enlargements. No. 1, 14 feet wide by 106 feet long, cement floor and sides. No. 2 is 20x50 feet, cement sides built to permit refrigeration later if desired. No. 3, additional packing shed 24x56 feet.

