

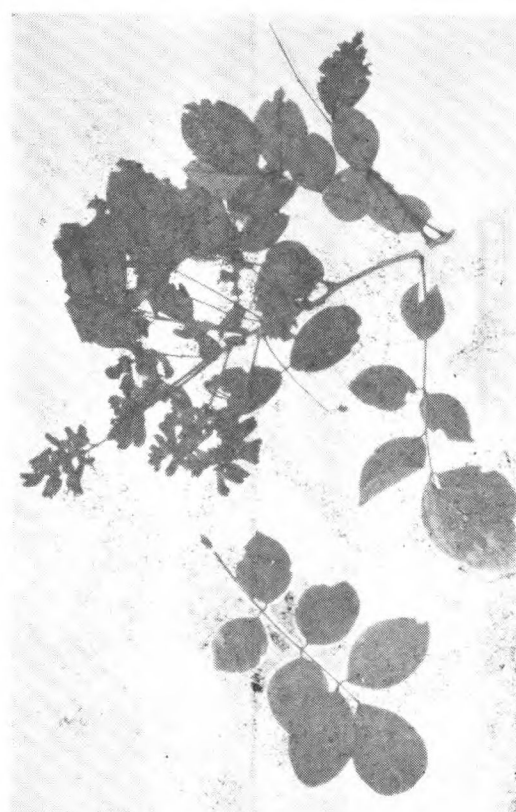
Millettia oraria (Hance) Dunn
Ford 35. 广东



Millettia pachycarpa Bth.
Henry 13000. 云南思茅



Millettia pulchra Kurz. var.
yunnanensi (Pamp.) Dunn
Ducloux 2. 云南昆明附近



Millettia reticulata Bth.
Fortune 95A (type) 福建廈門

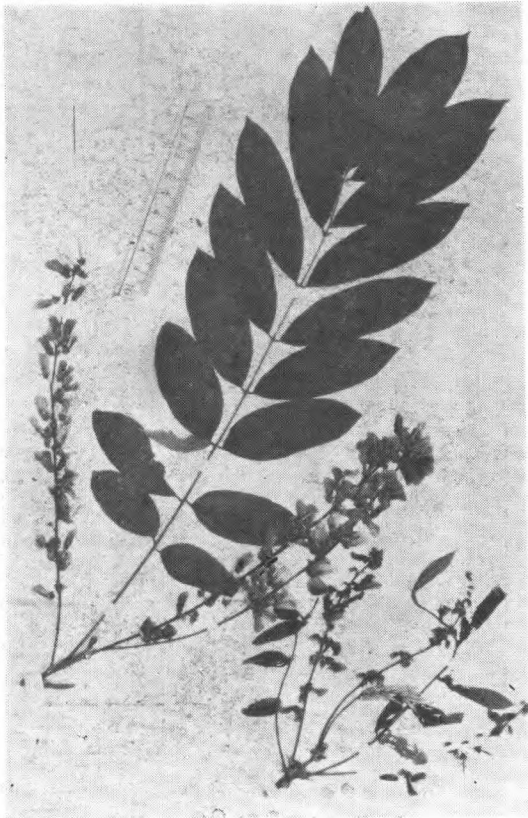


Millettia sericoma Hance
Hance 21961 (type) 四川

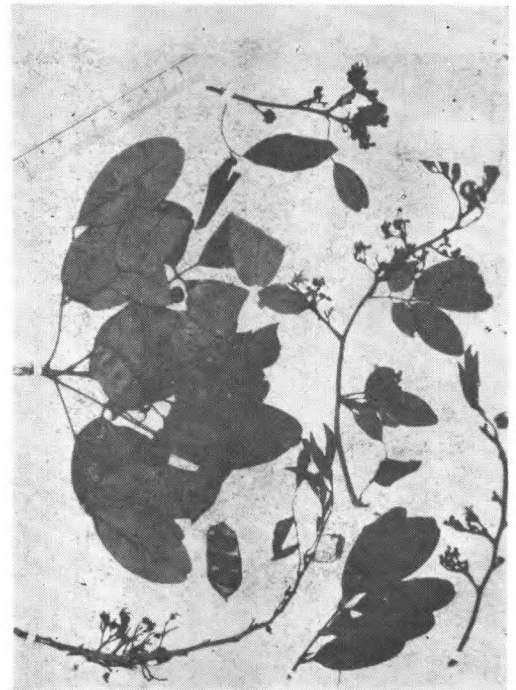


Millettia speciosa Champ.
Chun et Tso 43467. 海南

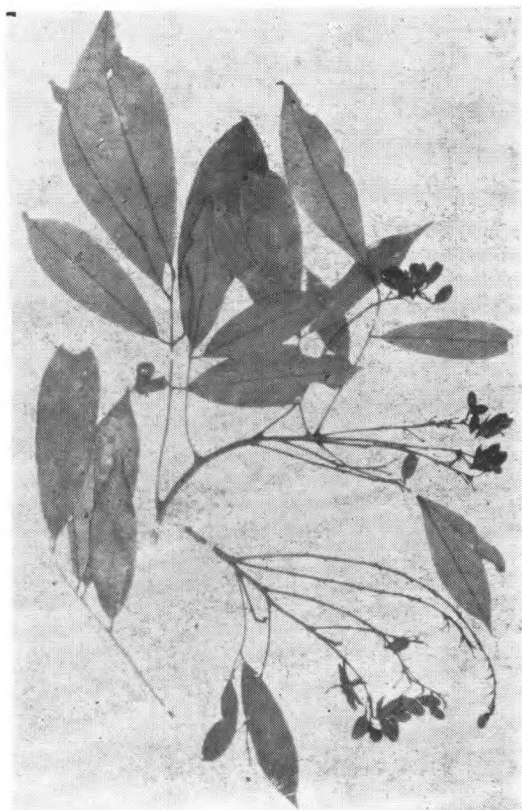
紅豆树屬 *Ormosia* Jacks.



Millettia velutina Dunn
Henry 9728D (type) 云南蒙自



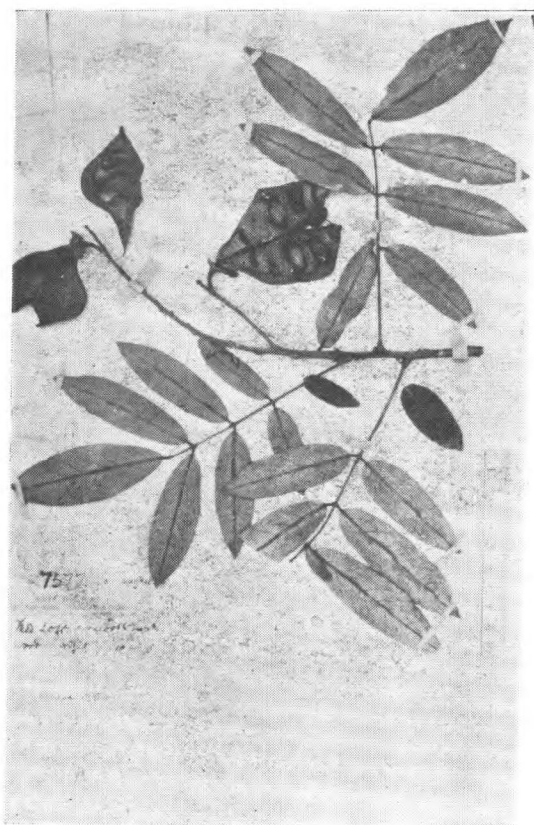
Ormosia emarginata (Hk. et Arn.) Bth.
Champ. 广东



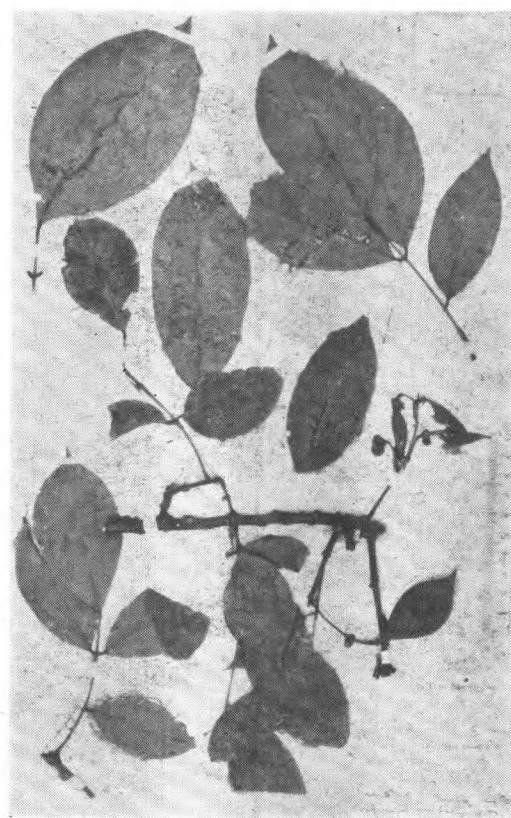
Ormosia Fordiana Oliv.
Ford (type) 广东



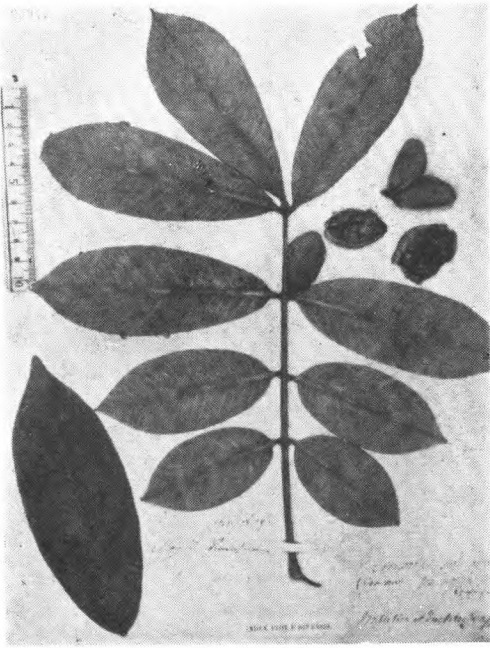
Ormosia formosana Kanehira
T. Hay 无号台湾 Rengechi, Taityu,



Ormosia Henryi Prain
Henry 7577. (type) 湖北



Ormosia Hosiei Hemsl. et Wils.
Wils 3407 (type) 四川成都



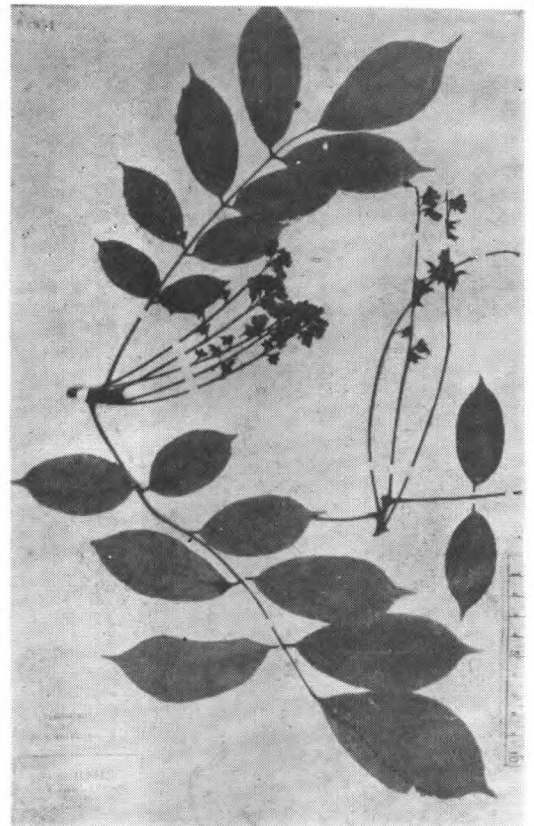
Ormosia pachycarpa Champ.
Champ. (type) 香港



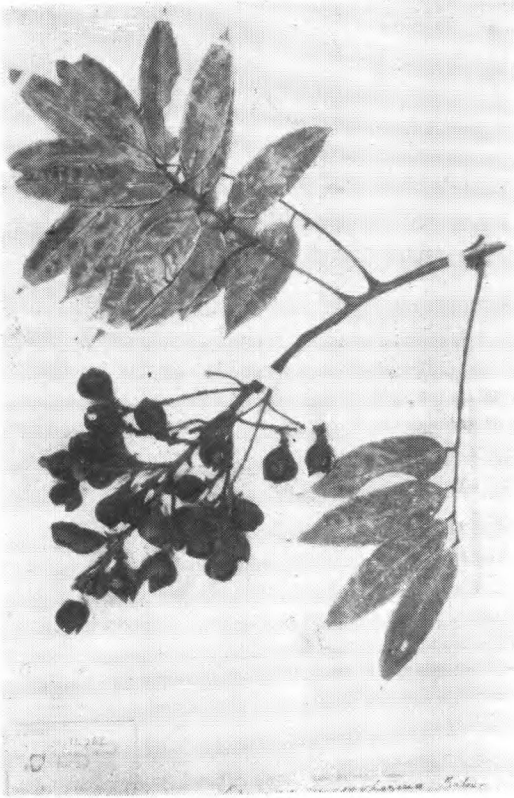
Ormosia pinnata (Lour.) Merr.
McClure 7718. 海南那大五指岭



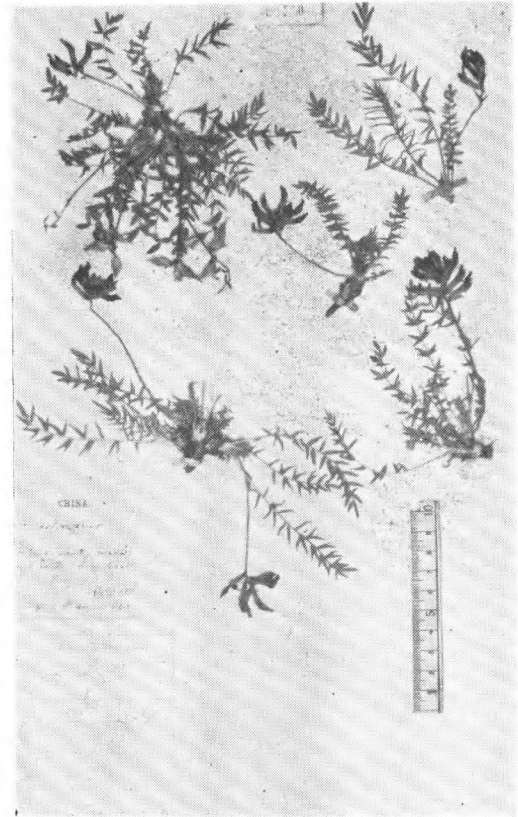
Ormosia semicastrata Hance
Ford (type) 广东



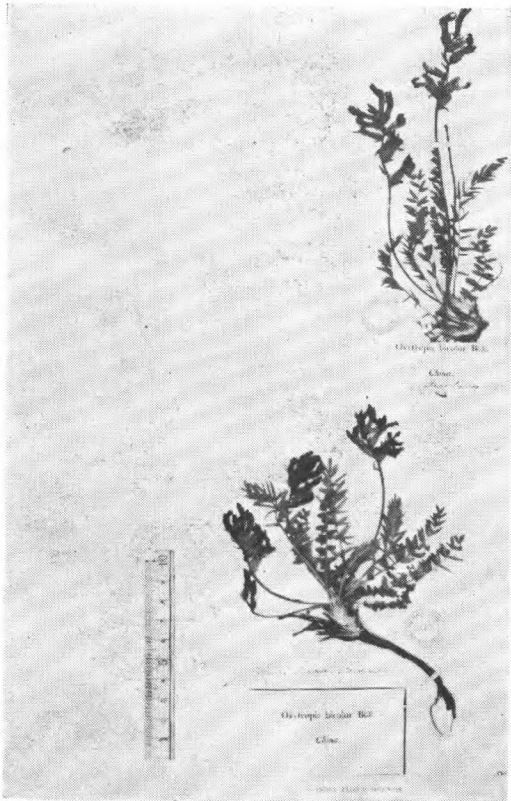
Ormosia striata Dunn
Henry 11886 (type) 云南思茅

棘豆屬 *Oxytropis* DC.

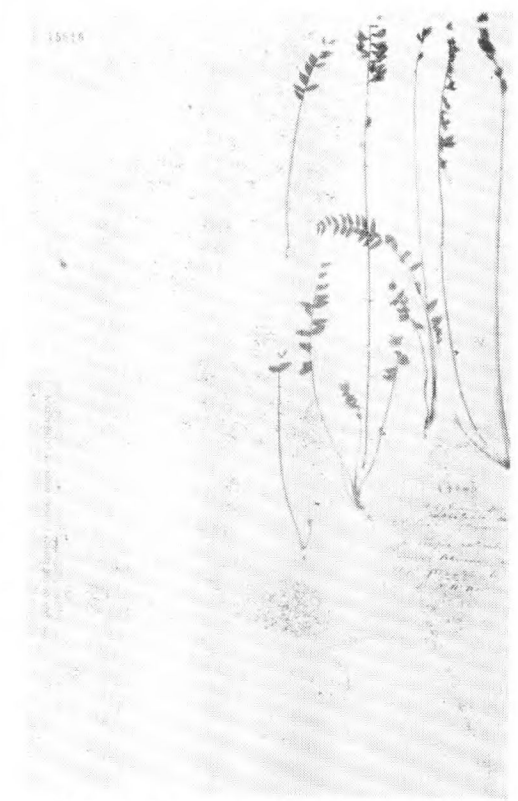
Ormosia yunnanensis Prain
Henry 11967 (type) 云南思茅西山



Oxytropis aciphylla Ledeb.
R. C. Ching 16, 内蒙贺兰山



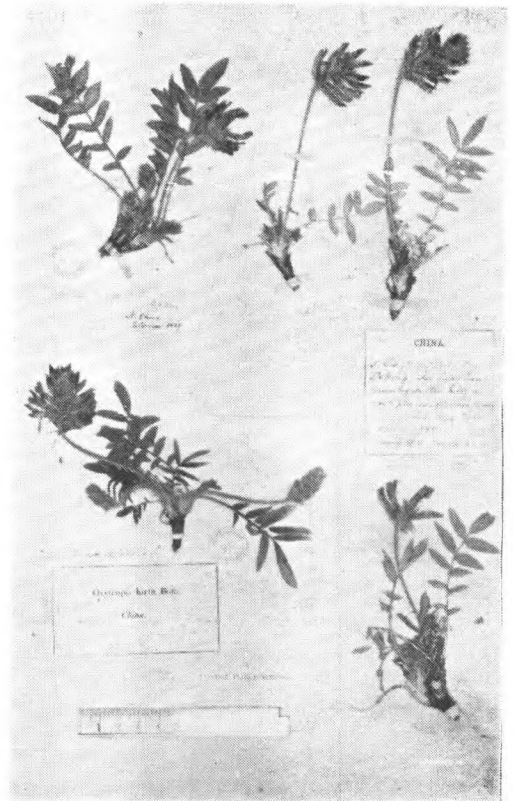
Oxytropis bicolor Bge.
Bge. (isotype) 中国北部



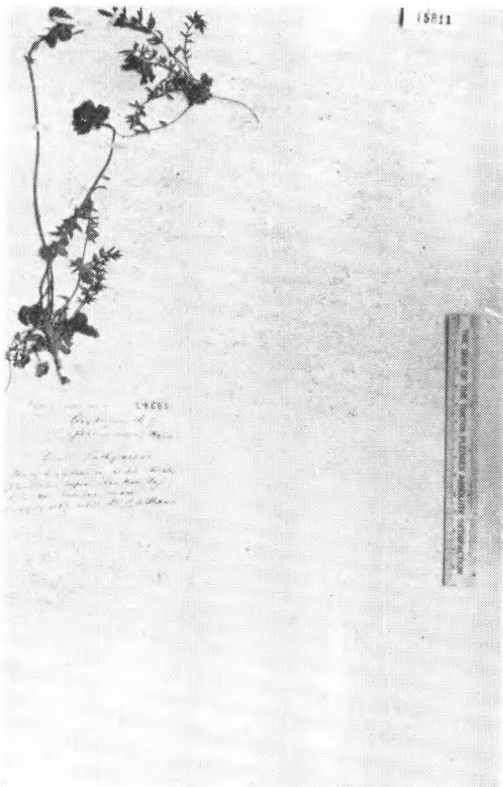
Oxytropis coerulea (Pall.) DC.
S. W. Williamsin Herb. Hance 14889



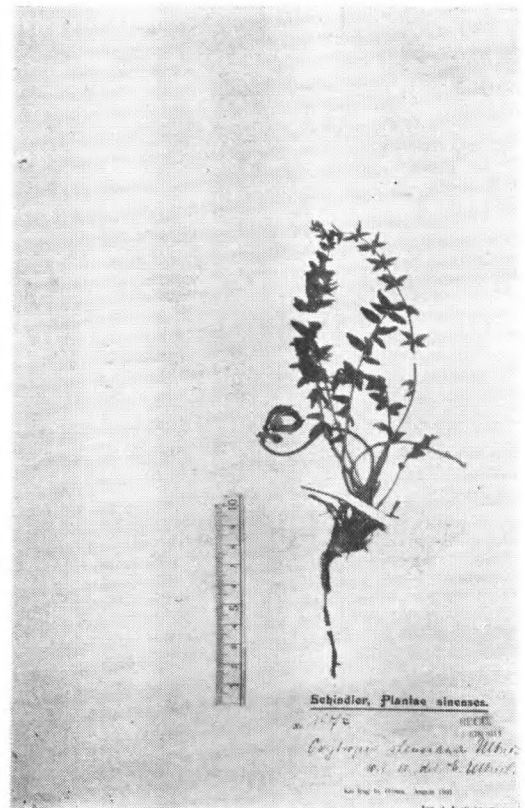
Oxytropis glabra DC.
Licent 5506. 甘肃北部



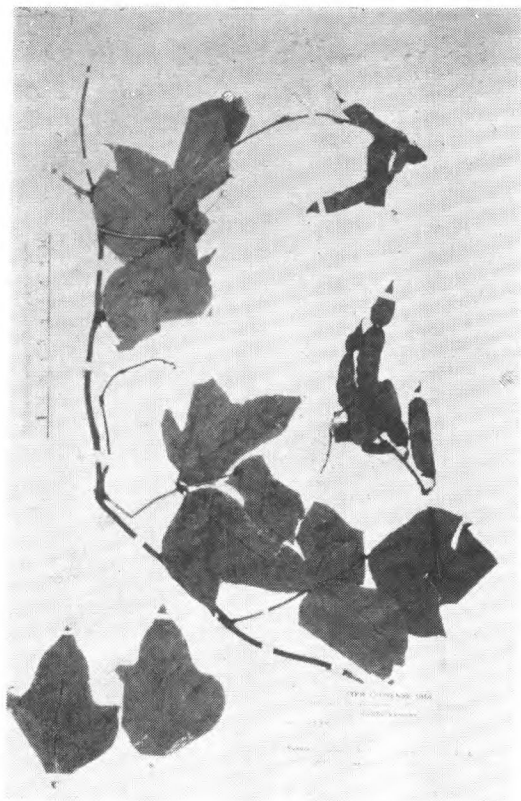
Oxytropis hirta Bge.
Hancock 15 北京, Bge. 中国北部,
Tatarinow (isotype)



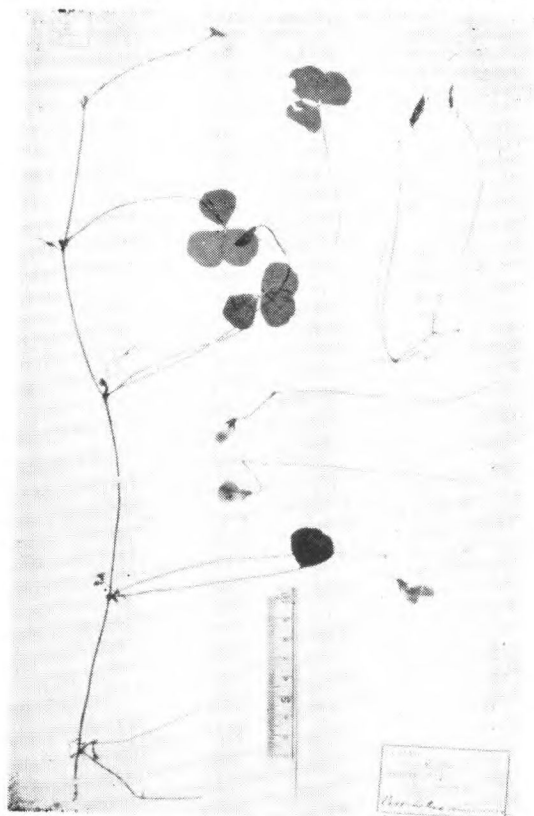
Oxytropis psammocharis Hance
S. Williamsin Herb. Hance 14685 (type)
河北昌平南口



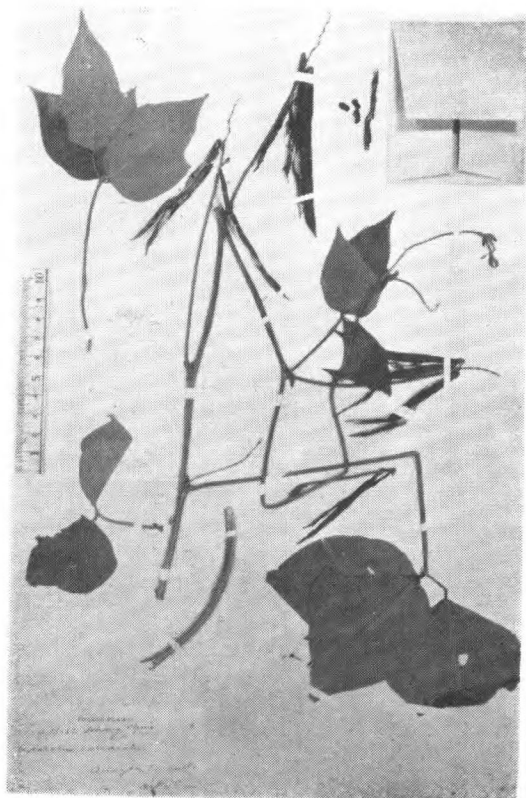
Oxytropis trichophora Franch.
Schindl. 197a. 河南开封

豆薯屬 *Pachyrhizus* Rich. ex DC.

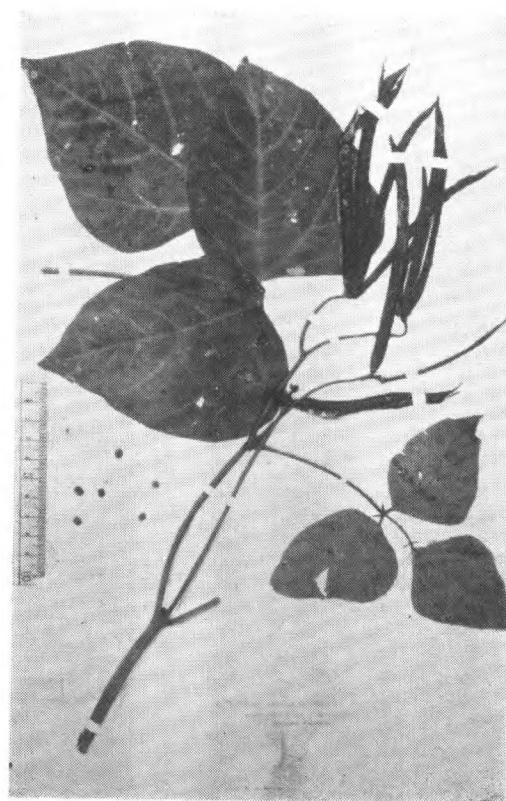
Pachyrhizus erosus (L.) Urb.
Schneider 3172 云南丽江

紫雀屬 *Parochetus* Buch.-Ham.

Parochetus communis Buch.-Ham.
Henry 9053. 云南蒙自东南

菜豆屬 *Phaseolus* L.

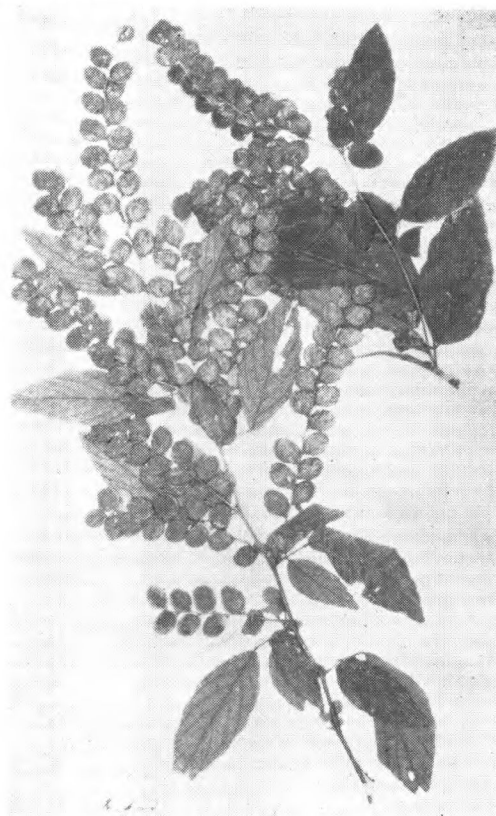
Phaseolus calcaratus Roxb.
C. V. Pepper? S. P. I. no. 13382
湖北宜昌



Phaseolus radiatus Linn.
Wils. 3808. 四川

毛排錢屬 *Phyllodium* Desv.

Phyllodium elegans (Lour.) Desv. var.
typicum Schindl.
Miller 广东



Phyllodium pulchellum (Linn.) Desv.
Wilford 168 香港, Wright 124.

黄花木屬 *Piptanthus* Sweet

Piptanthus concolor Harrow
Henry 10230. 蒙自西山



Piptanthus Forrestii Craib
Forrest 12577 (type) 云南察瓦龙

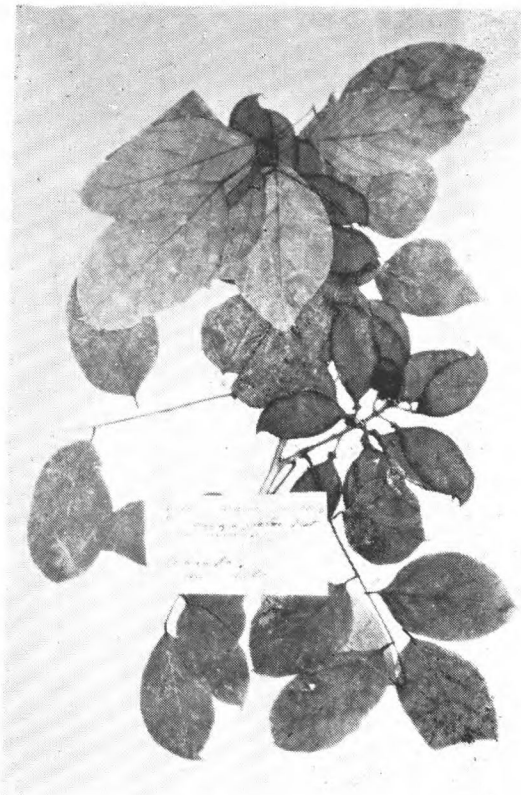


Piptanthus mongolicus Maxim.
Potanin



Piptanthus tomentosus Franch.
Delavay 655 (type) 云南大理苍山

水黄皮屬 *Pongamia* Vant.



Pongamia pinnata (Linn.) Merr.
Hance 6064. 广东黄埔

Psophocarpus Neck.



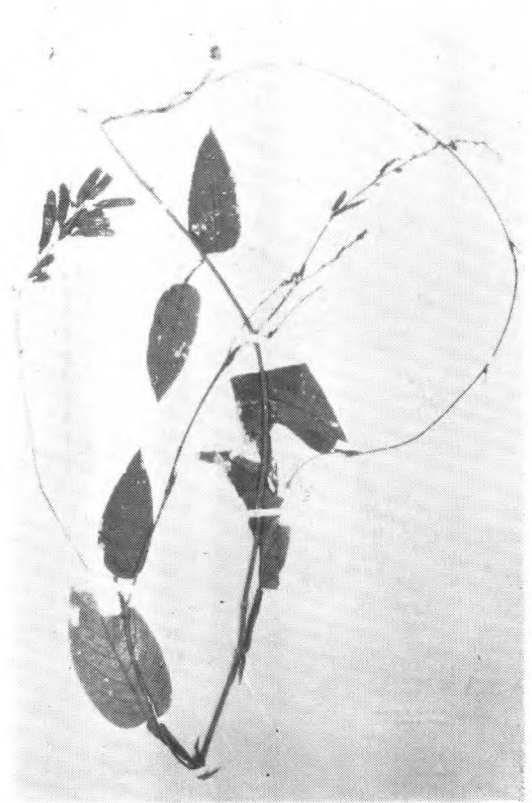
Psophocarpus tetragonolobus (L.) DC.
Dons d'Anty. 云南

紫檀屬 *Pterocarpus* Linn.



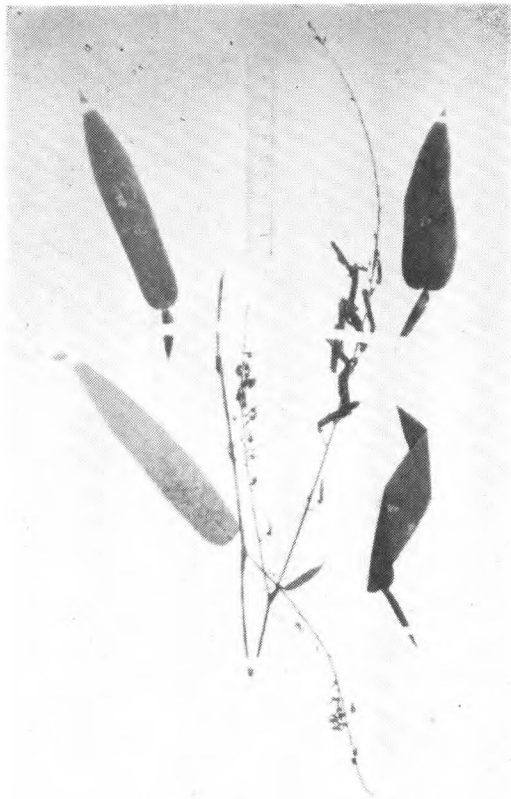
Pterocarpus indicus Willd.
Millett 中国

Pteroloma DC.



Pteroloma pseudotriquetrum Schindl.
Cavalerie 2627. 云南

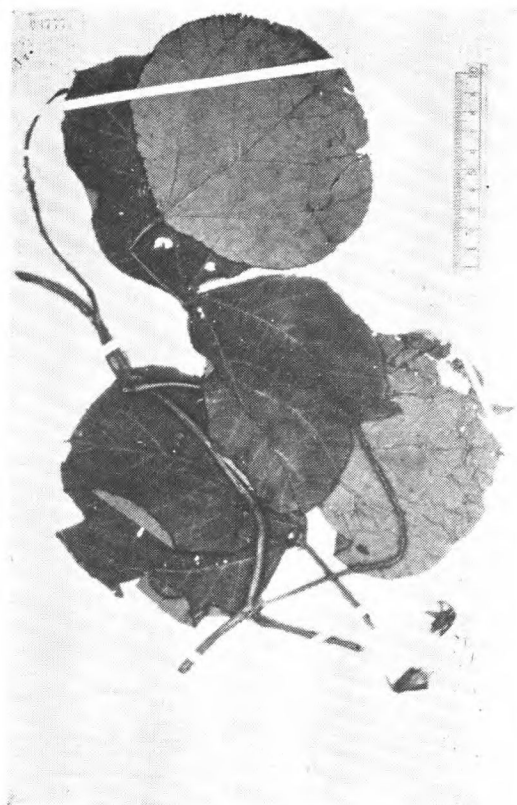
葛屬 *Pueraria* DC.



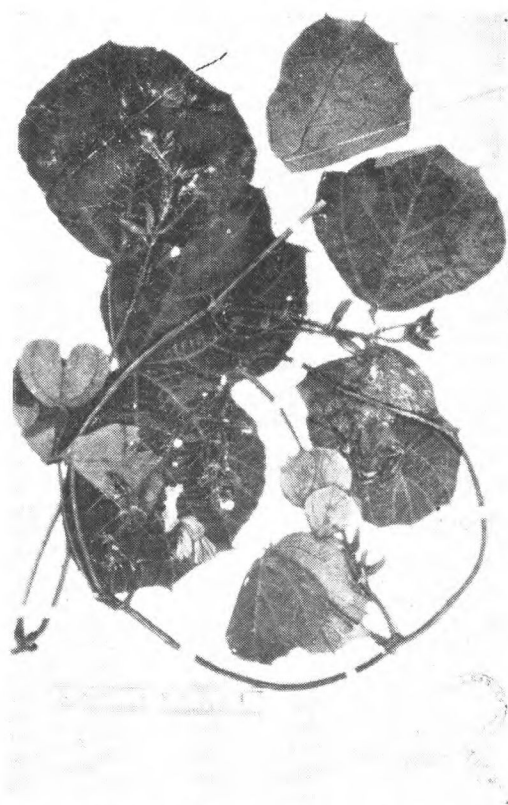
Pteroloma triquetrum (Linn.) Bth.
Delavay (1891.) 香港



Pueraria alopecuroides Craib
Dons d'Anty 255 云南思茅



Pueraria calycina Franch.
Delavay 3590 (isotype) 云南大坪子



Pueraria Forrestii W. E. Evans
Forrest 10732, (isotype)



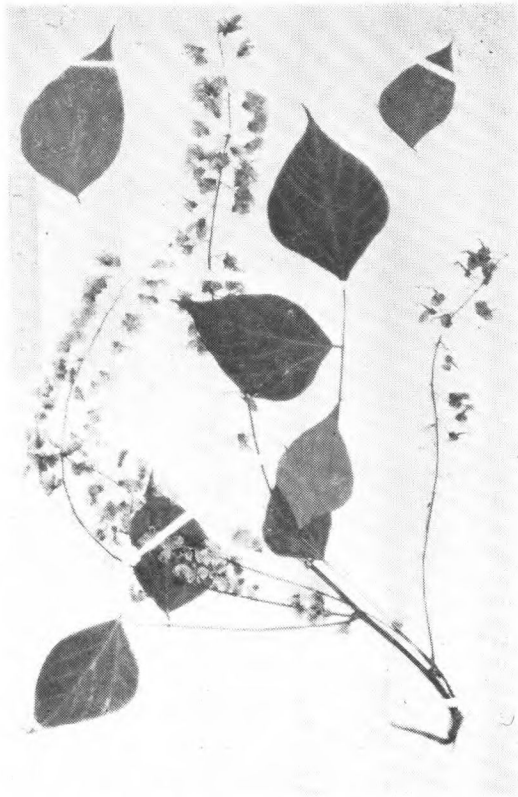
Pueraria peduncularis R. Grah. var.
violacea Franch.
Delavay 1983. (type) 云南厅角
(Pien Kio 徧桥?)



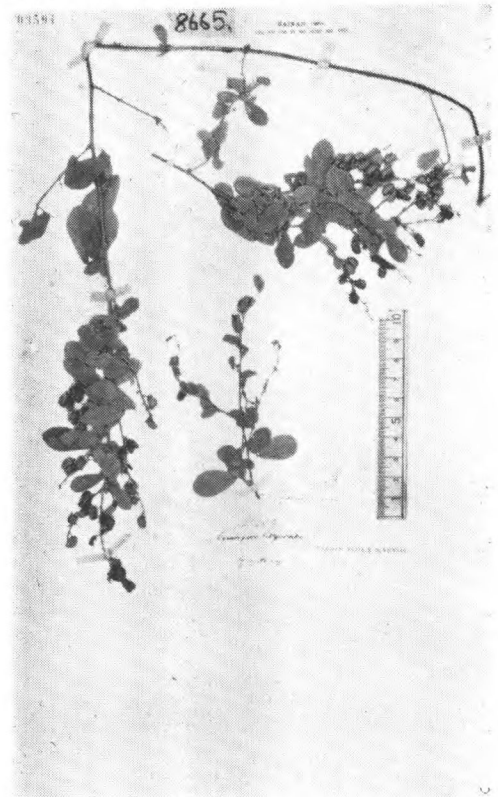
Pueraria Thunbergiana (S. et Z.) Bth.
Thbg (type) 日本

密子草屬

Pycnospora R. Br. ex Wight et Arn.



Pueraria yunnanensis Franch.
Delavay 2301. 云南

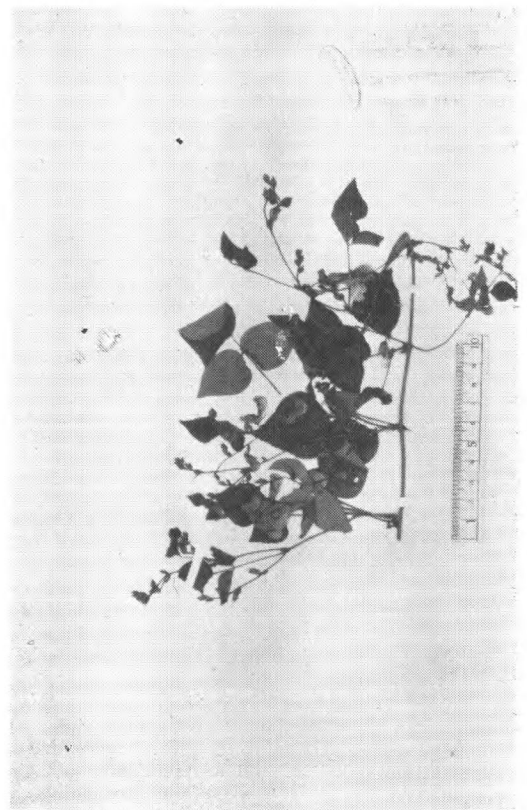


Pycnospora lutescens (Poir.) Schindl.
Henry 8665 海南, Champ. 259. 香港

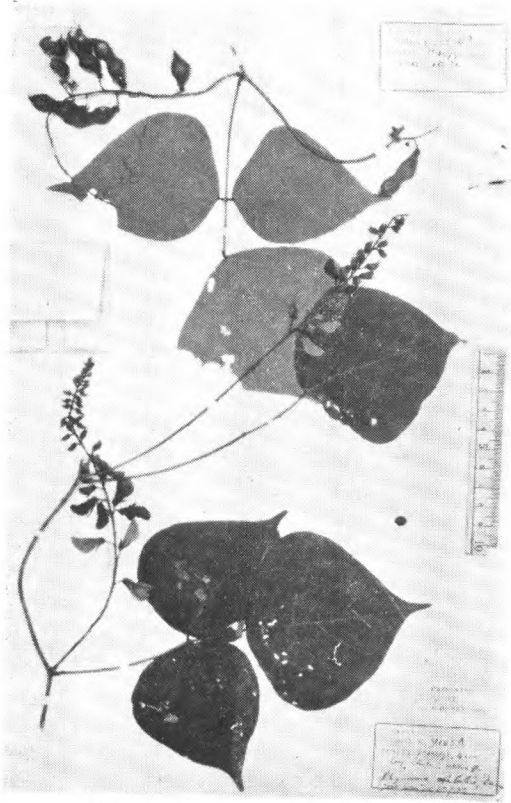
鹿藿屬 *Rhynchosia* Lour.



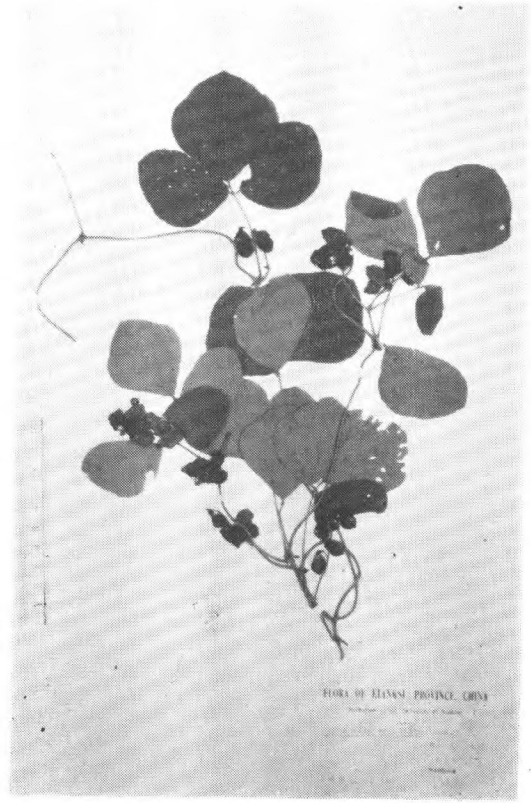
Rhynchosia Dielsii Harms
Maxim. 1862. (type) 日本横滨



Rhynchosia himalensis Bth.
Ducloux 6874 云南大理宾川

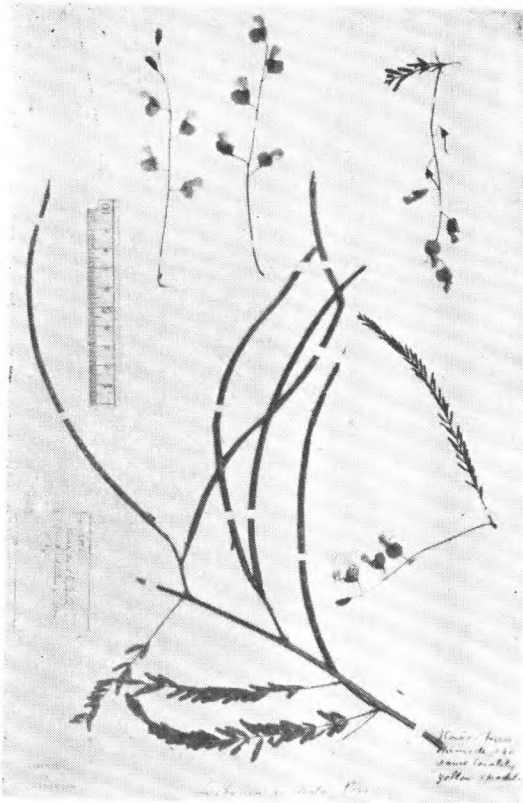


Rhynchosia volubilis Lour.
Henry 9105A (type) 云南蒙自



Rhynchosia volubilis Lour.
Thbg. 日本

田菁屬 *Sesbania* Scop.



Sesbania cannabina (Retz) Pers.
Henry 10985, 云南蒙自



Sesbania Sesban (L.) Merr.
Oldham 181. 台湾淡水

宿苞豆屬 *Shuteria* Wight et Arn.

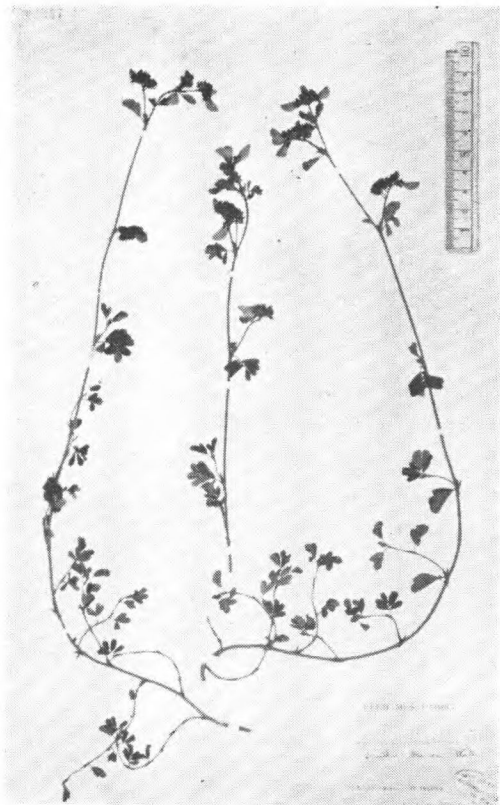


Shuteria ferruginea (R. Grah.) Baker
Wils. (Veitch.) 1669a. 湖北

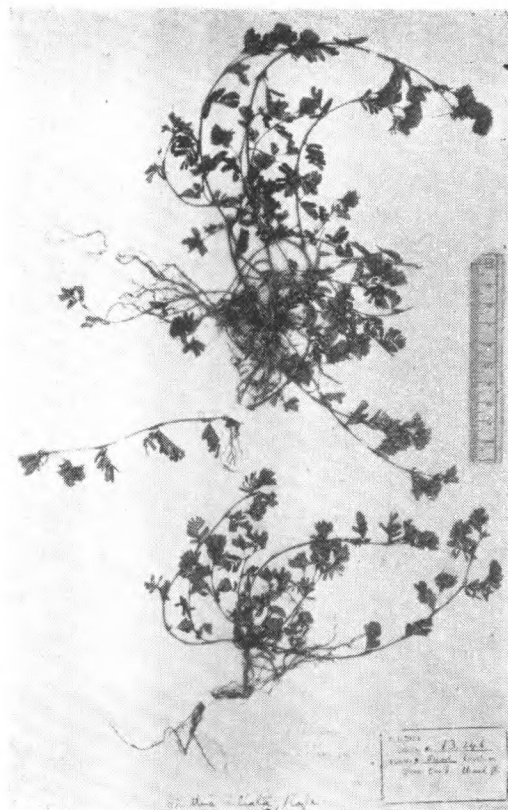


Shuteria sinensis Hk.
Henry 9216 (type) 云南蒙自

施氏豆屬 *Smithia* Aiton



Smithia blanda Wall.
Ducloux 2831. 云南



Smithia ciliata Royle
Henry 13264 云南普洱

槐屬 *Sophora* Linn.

Smithia Nagasawai Hay.
T. Kawakami 无号, Kagi, 台湾



Sophora alopecuroides Linn.
秦仁昌 181. 甘肃贺兰山



Sophora flavescens Ait.
Faurie 431 (type) 朝鮮



Sophora Franchetiana Dunn
Dunn 2582 (type) 福建中部



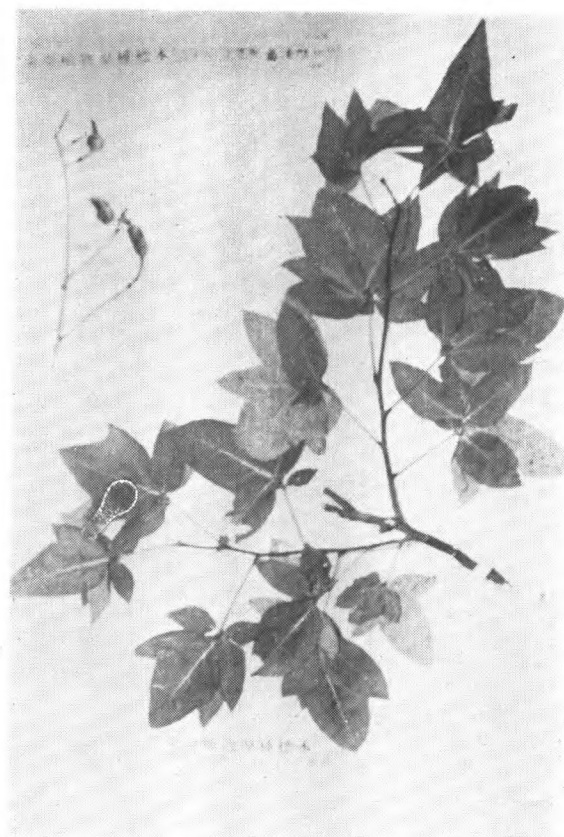
Sophora glauca Lesch.
H. Smith 1689. 四川



Sophora glauca var. *albescens* Rehd.
Wils. 1179. (type) 四川瓦山



Sophora japonica Linn.
Wils. 651. 湖北



Sophora japonica forma *oligophylla*
Franch. Liu 2567. 河北



Sophora japonica var. *vestita*
Wils. 651. 湖北



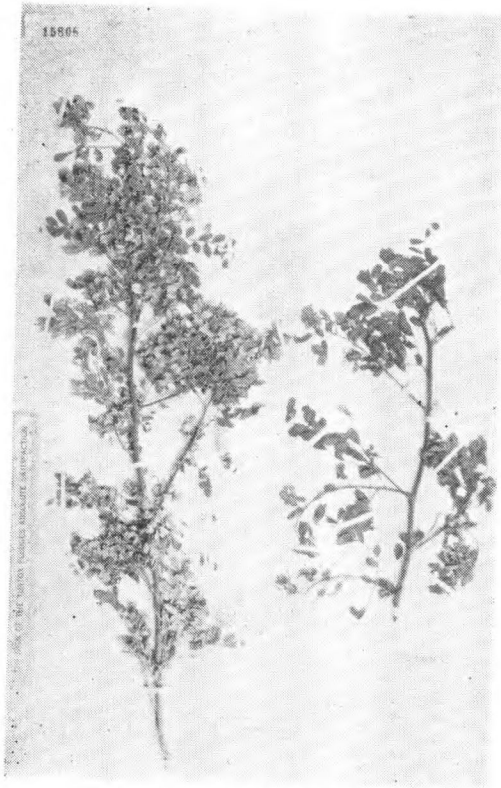
Sophora japonica var. *pubescens*
(Franch.) Rosse
Fang 1487. 四川汶川



Sophora Mairei Pamp.
Wils. (Veitch) 3390. 四川



Sophora tomentosa L.
Wilford 438. 广东, B. C. Henry 海南



Sophora viciifolia Hance
T. Wattersin in Herb. Hance 21075
(type) 湖北宜昌

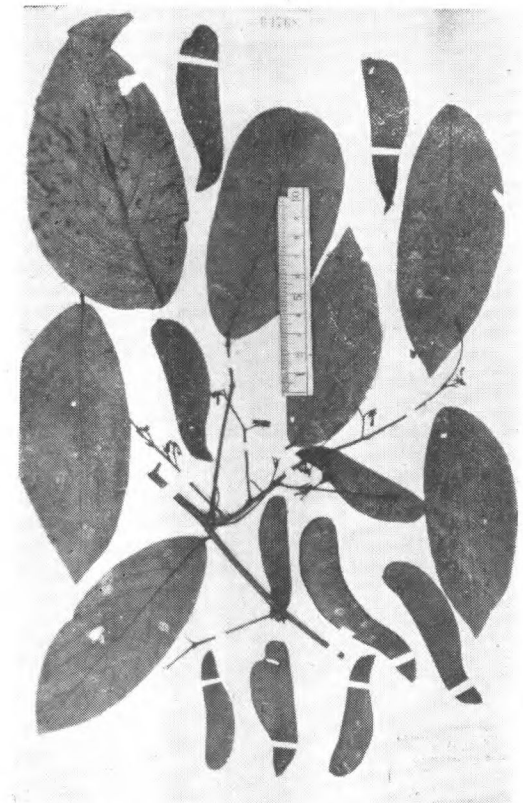


Sophora Wightii Baker
Henry 9673C. 云南

密花豆屬 *Spatholobus* Hassk.



Sophora Wilsonii Craib
Wils. 1067. 四川瓦山



Spatholobus varians Dunn
Henry 11771D. (type,) 云南思茅

苦馬豆屬 *Swainsonia* Salisb.

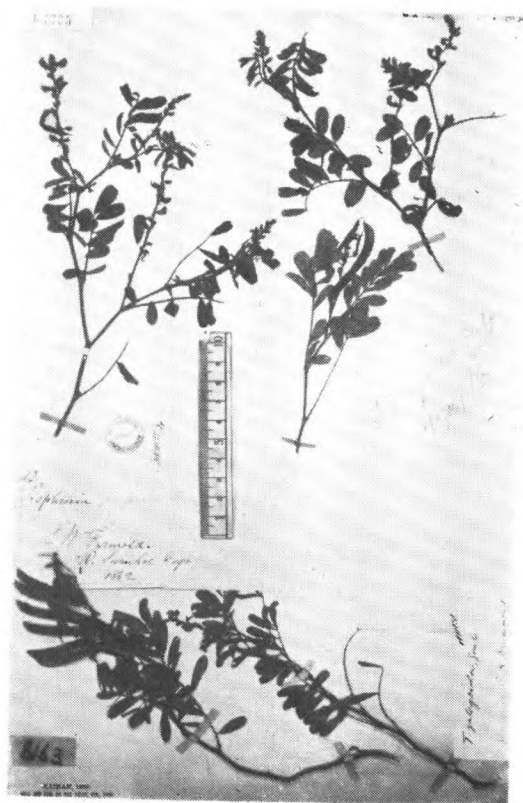


Swainsonia salsula (Pall.) Taubert
Hanock 3. 北京渾河三家店

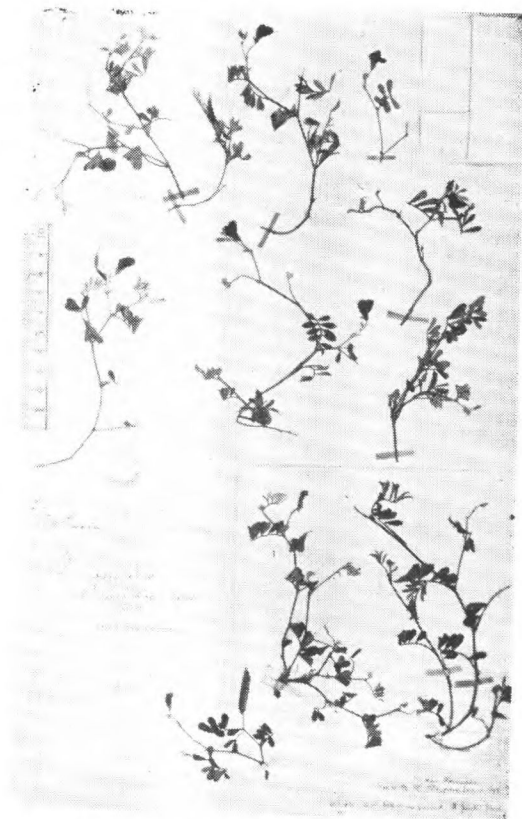
灰叶屬 *Tephrosia* Pers.



Tephrosia ionophlebia Hay.
G. Nakahara 无号 (merotypus.) 台湾
(Toseikau)



Tephrosia purpurea (L.) Pers.
Swinhoe 10, 台湾西南, Henry 8163. 海南



Tephrosia timoriensis DC.
Swinhoe 22 台湾西南, Playfair 9. Takow,

野决明属 *Thermopsis* R. Br.



Tephrosia villosa (L.) Pers.
Bradley 1779.



Thermopsis alpina (Pall.) Ledeb.
Delavay 660 (isotype) 云南



Thermopsis barbata Bth.
Forrest 14099. 云南



Thermopsis chinensis Bth.
C. W. Evrard 浙江宁波, C. Wright 57 琉球

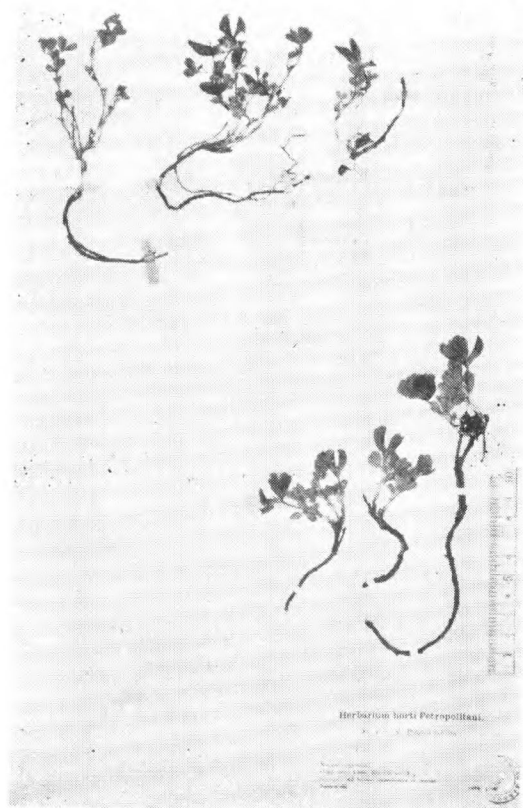


Thermopsis lupinoides (Linn.) Link
Schindl. 267. 上海

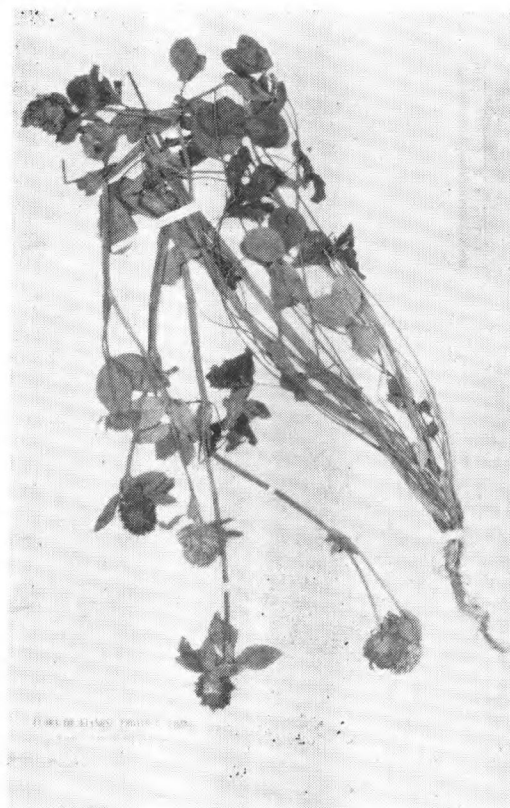


Theromopsis Smithiana Peter-Stibel
Forrest 19681. 云南长澜

三叶草屬 *Trifolium* L.

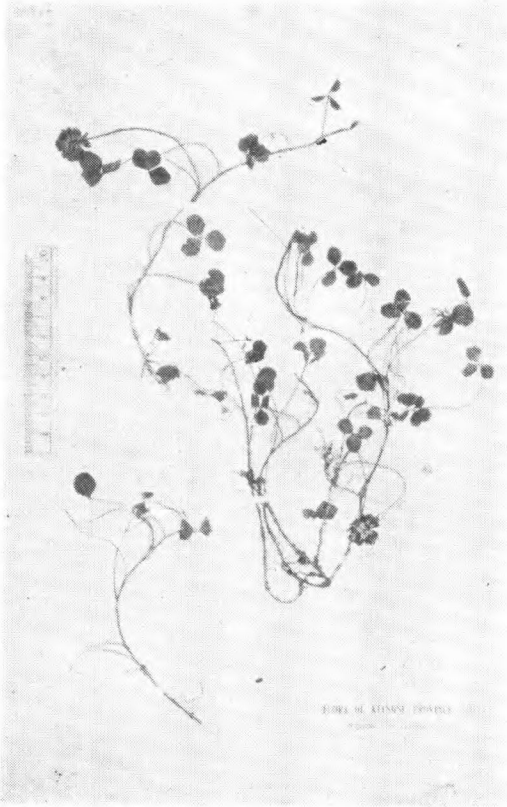


Trifolium eximium Steph.
Bge. 阿尔泰, Potanin 蒙北烏拉尔

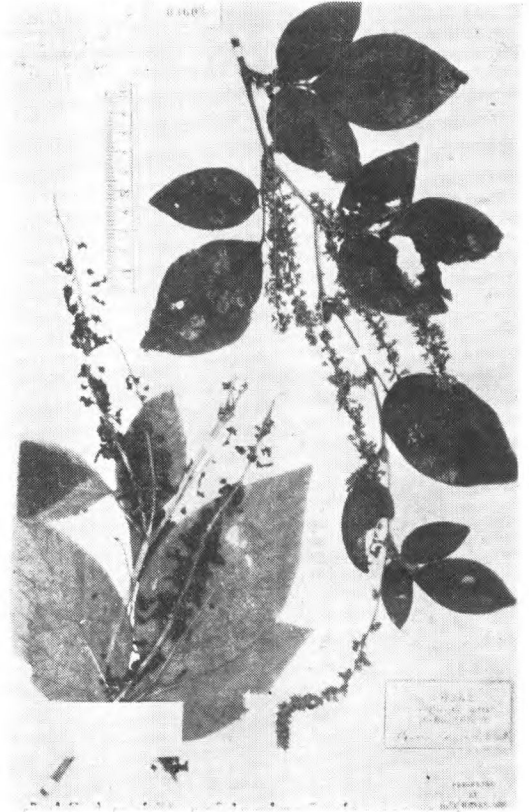


Trifolium pratense Linn.
Steward in Herb. Nanking 2611. 廬山

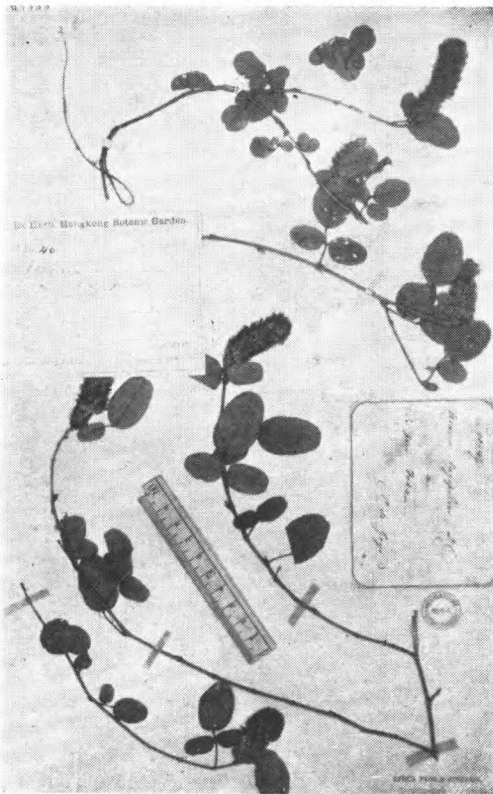
兔尾草屬 *Uraria* Desv.



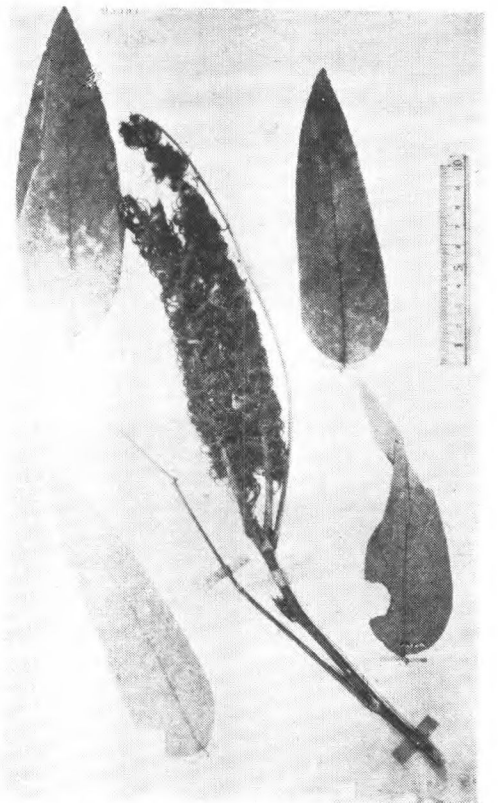
Trifolium repens Linn.
Steward in Herb. Nanking 2095.
江苏南京



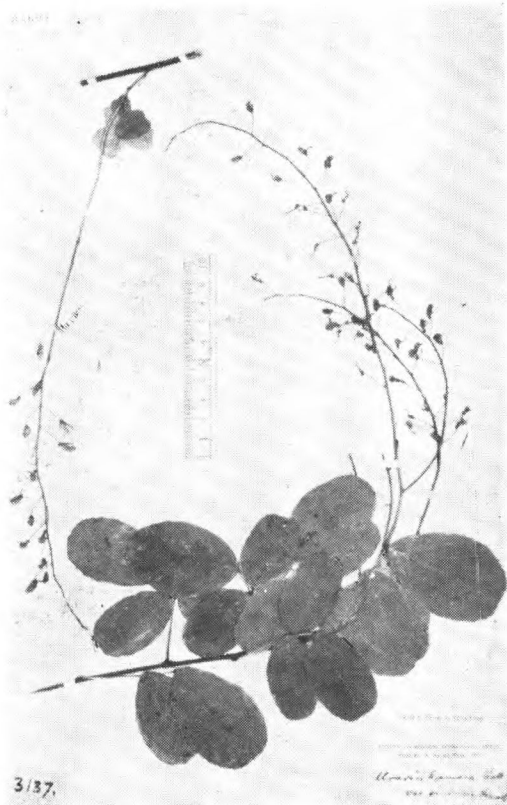
Uraria Henryi Schindl.
Henry 9342, 9342B (type) 云南蒙自



Uraria lagopodioides (Linn.) D. Don
Hance 10147 福建, Ford 40 广东



Uraria macrostachya Wall.
Parkes 47. 广东



Uraria picta (Jacq.) Desv.
Delavay 云南大坪子姜苔



Uraria sinensis (Hemsl.) Franch.
Henry 3137 (type) 湖北宜昌

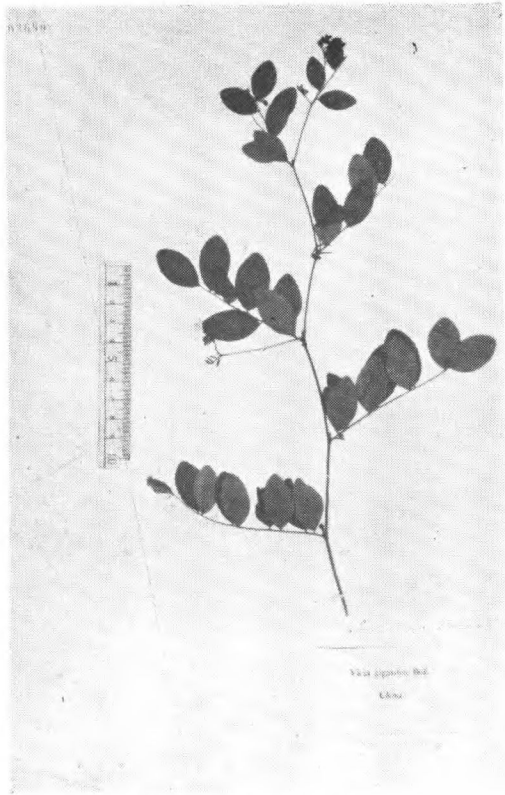
巢菜屬 *Vicia* Tourn. ex Linn.



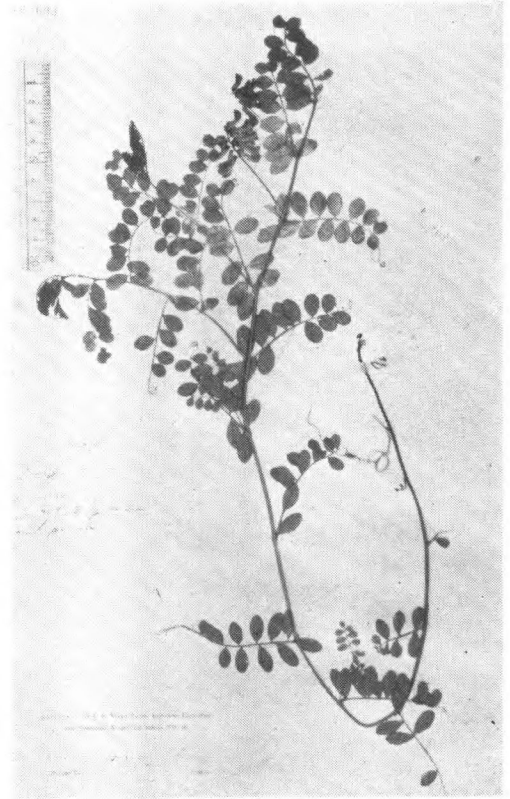
Vicia Bungei Ohwi
Bge. (cotype) 中国 Williams in Herb
Hance 11455 北京



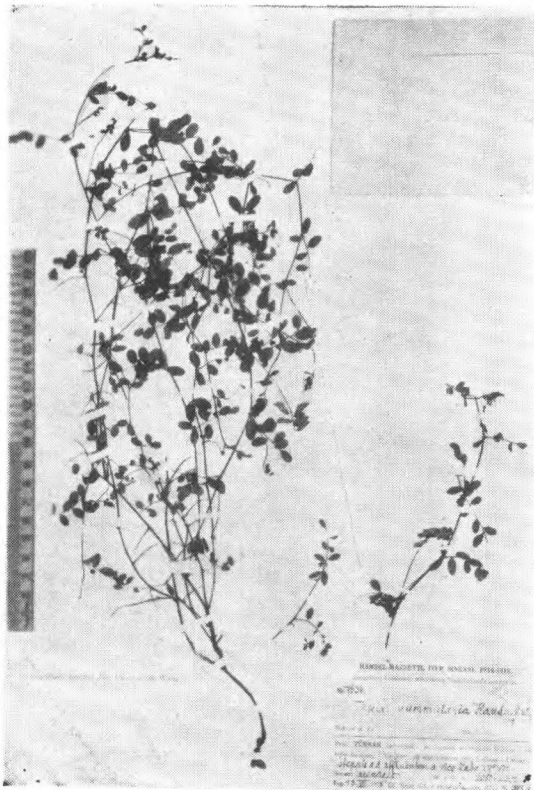
Vicia dichroantha Diels
Forrest 2443, (isotype) 云南丽江东坡



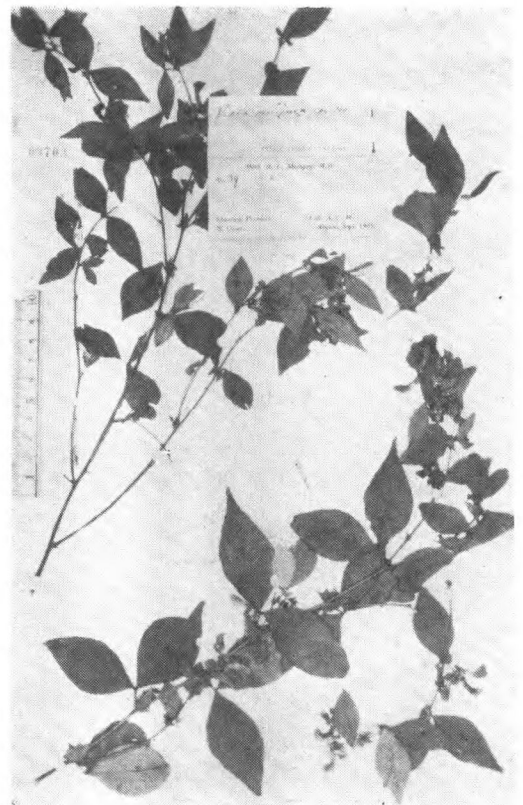
Vicia gigantea Bge.
Bge. (cotype) 中国



Vicia japonica A Gray
Wright (cotype) 日本



Vicia nummularia H.-M.
H.-M. 7634 (type) 云南丽江, 西金沙江谷



Vicia unijuga Braun
Forbes 241, Maingay 39 山东芝罘