

## AUTOMOTIVE FIRE PUMP

built by the Weyher and Richmond establishments

"The boiler is of the [Durenne and Krebs type](#), already applied by Weyher and Richmond on the pumps currently used by the fire brigade."

"The steam engine is of the pestle, compound type, with cylindrical distributors. Its normal power is **30 horsepower at 300 rpm.**"

"Under ordinary conditions of use of the pump, **pressurization only requires three and a half to four minutes from the alarm signal**, the water being maintained at 100 degrees by the gas ramp device already used on the ordinary pumps."



Fig. 2. — POMPE AUTOMOBILE A VAPEUR DES SAPEURS-POMPIERS DE LA VILLE DE PARIS : Vue de l'avant.

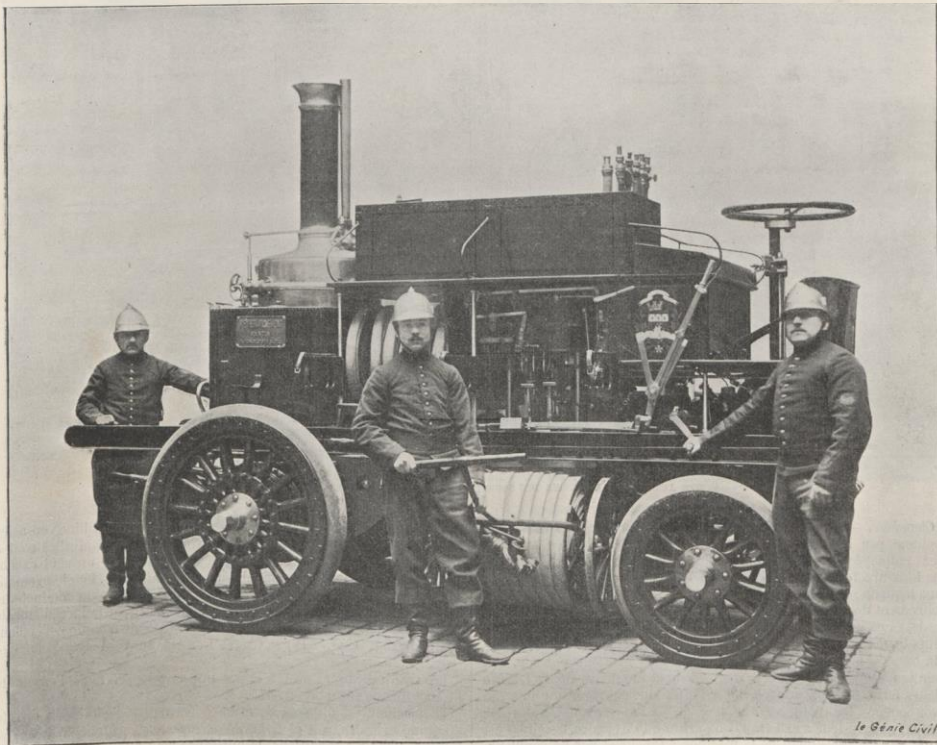


Fig. 1. — POMPE AUTOMOBILE A VAPEUR DES SAPEURS-POMPIERS DE LA VILLE DE PARIS : Vue prise pendant la descente d'un dévidoir.

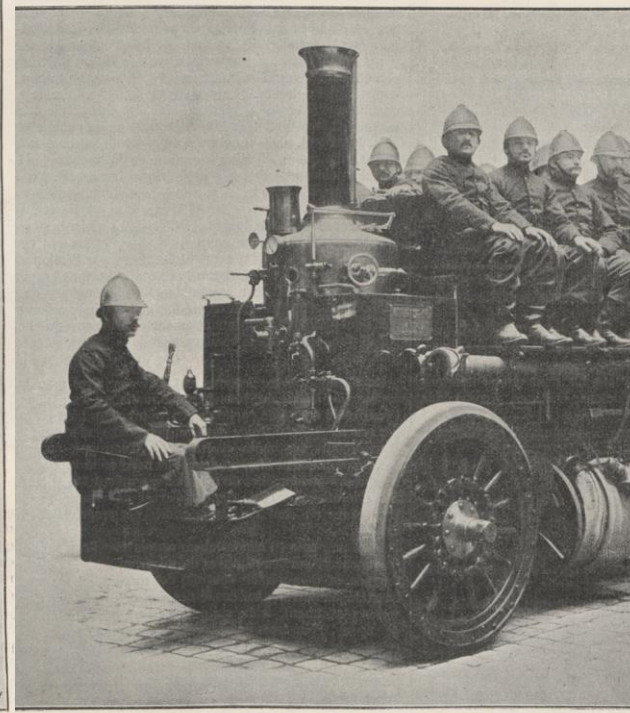


Fig. 3. — POMPE AUTOMOBILE A VAPEUR DES SAPEURS-POMPIERS DE LA VILLE DE PARIS

## 1903 - AUTOMOBILE FIRE STEAM PUMP OF THE PARIS FIREFIGHTERS

At the 6th International Automobile Cycle and Sports Exhibition in the Grand Palais from December 10 to 25, 1903, Automobile Club de France (ACF).

