

LJ

75

K9C35

BETA-XI
OF
KAPPA SIGMA



Class LJ75

Book 1T9C35

PRESENTED BY

BETA-XI OF KAPPA SIGMA

BETA-XI
of
KAPPA SIGMA

A Greek Letter Society

at the
University of California

BY
WESLEY WILLIAM KERGAN
PUBLISHED BY THE CHAPTER

SAN FRANCISCO
THE JAMES H. BARRY CO.

1911

LJ 75
.K9C35

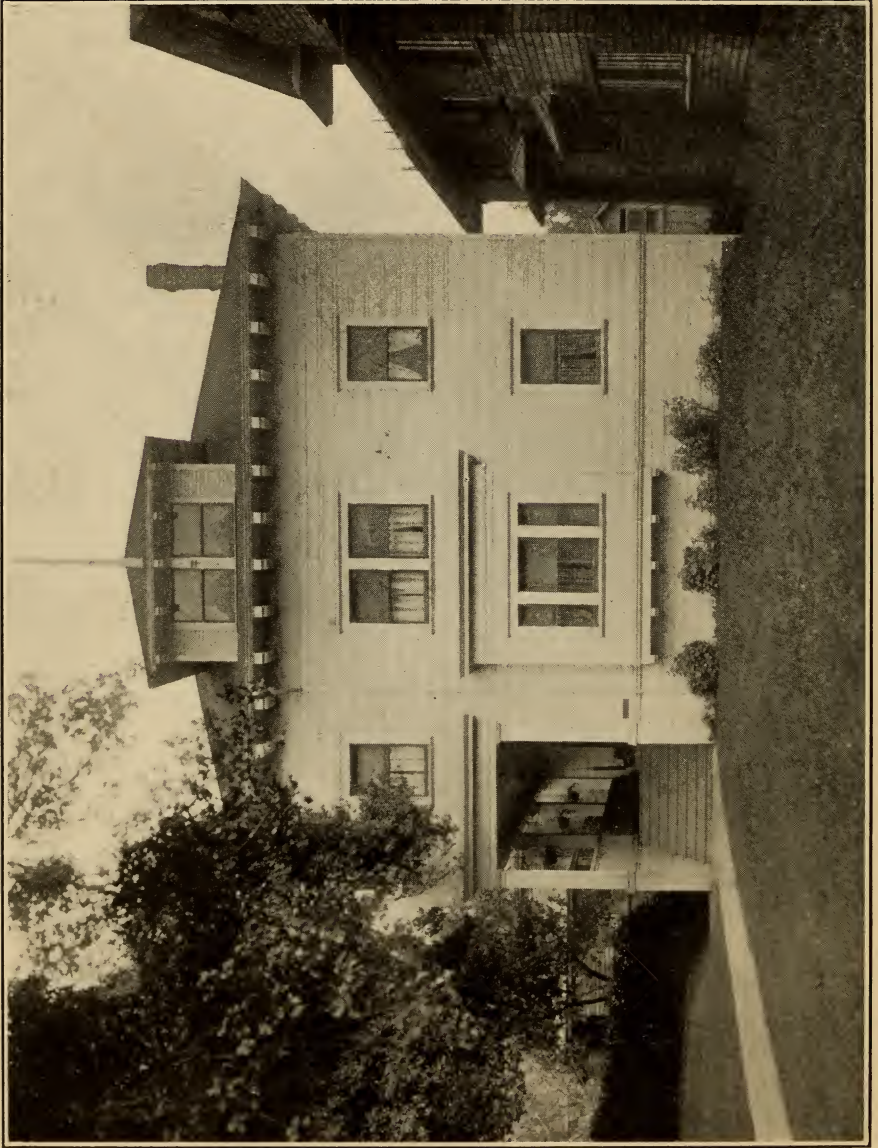
Gift
Author
(Person)
JUL 16 1913

FOREWORD

The title page of a sketch of this kind never could indicate all the contributors, nor even if it gave their names, could any exact estimate of their relative values be made. Boutwell Dunlap, recognized peer of Greek letter historians, has been of greatest aid to me. He first thought of a history. Through his work as national historian of our Fraternity he was able not alone to be of an invaluable source of information, but by his criticisms has molded the raw material into a form otherwise impossible of attainment. In the collection of records and funds for the publishing of this little book, Howard Mortimer Leggett deserves credit. In this, as in all his other labors for Beta-Xi, he gave freely of his time. The others who have assisted me, too numerous to mention, I also thank.

W. W. K.

August, 1911.



BETA-XI'S NEW HOME.

BETA-XI OF KAPPA SIGMA

The University of California has had two distinct periods during its existence—first, as a small college, when it was of a limited, or state-wide influence, and second, as a great university, with a national and even an international sphere of influence.

The first period may be said to start with the beginnings of a college in the city of Oakland and the later move to Berkeley with the acceptance of the terms of the federal government. It was distinctly a small college, tending chiefly to the classics, although the terms of the federal grant forced in certain of the so-called practical lines of study, as agriculture.

The end of that period is not very distinct, ranging from 1890 to 1899. It was in that intermediate period that certain ideas arose, which have made the present and the future Greater University, a possibility and at the same time a reality.

The logical point of division would be the inauguration of Benjamin Ide Wheeler as president, October 2, 1899. With a man of such education and executive ability to lead, there could be nothing but growth for the greatest of state universities.

President Wheeler's coming was opportune. The Hearst plans for a Greater University had just been completed by M. Benard and the prize awarded September 7, 1899. A plan of such magnitude required an equally great man to carry it to a successful conclusion.

Beta-Xi of Kappa Sigma

Mrs. Phoebe Hearst is the largest private donor of the University of California, not alone in the aggregate amount, but also in the number and ultimate aims of her gifts, but none will ever exceed the plans. In 1896 Mrs. Hearst offered to finance an international competition for the plans of a university.

The Hearst plans are comprehensive. Every department that a university should have, has been provided for, and yet the plan is capable of modification to suit changes and for gradual construction of buildings. When completed it will give California the best fitted as well as the best located university in the world. The ideal situation at the foot of the Berkeley hills has been taken advantage of, as well as the beautiful view to the west through the Golden Gate.

The buildings themselves will be of white granite, the red tiled roofs giving a necessary touch of color and all combining to make the university typically Californian.

Not alone did this change affect the university outwardly; the changes internally were as great.

California has always been fortunate in obtaining men of the highest scholastic degree to serve her, but the number of great men and the degree of greatness were now both enlarged.

The student body was affected. The increasing number of students had, of itself, been a large factor in the change of their ideas. It was inevitable. There came a breaking away from old traditions. In no phase of student life was this more readily seen than in fraternity ideas. The entrance of Delta Tau Delta in 1898, fol-

A Greek Letter Society at California

lowed by a large number of others in the next few years, exemplified this change.

It was under such auspicious circumstances as those that Beta Kappa Delta was formed in 1899 at "Glen da lough," the family home of the O'Tooles and in the "eighties" the first show place of Berkeley.

The Greek words, of which Beta Kappa Delta were the initial letters, had a particularly appropriate meaning—"Fraternity and Scholarship." The type of men who formed this local fraternity was very high and their ideals were those that might have been expected. The ritual was drawn up and the manner in which the men worked was entirely worthy of the leadership of three such men as Laurence Stephen O'Toole, Boutwell Dunlap and George Carlos Sabichi. The part that the then district grand master of Kappa Sigma, Frederic Jewell Perry, played was prominent as well as creditable, both to his knowledge of the Fraternity and the future of the university.

Although the charter of Beta-Xi chapter of the Kappa Sigma Fraternity was granted July 17, 1901, and the formal installation ceremonies held on August 24, 1901, with the opening of the next college year, yet these dates do not offer any true indications as to the first attempts to gain a charter from this Fraternity at the University of California.

"In 1871 when Founders Arnold and North went to Bellevue, New York, they were given powers by the parent chapter, to initiate Dr. Henry Seeley Welch, which they accordingly did. Dr. Welch was to install a chapter

Beta-Xi of Kappa Sigma

at the University of California, but he found the time inopportune." Dr. Welch is a leading physician of San Francisco.

In 1874, the Fraternity still looked to California to establish a chapter to be known as Delta, but no charter was ever issued. We learn this from an old letter of that year written by Lyon G. Tyler, son of President John Tyler and himself now president of William and Mary College, who was then grand scribe of the mother chapter, Zeta, at Virginia.

In 1877, Griffin Johnston (Washington and Lee), son of General Albert Sidney Johnston, of the Confederate States Army, Dr. J. N. Prather (Washington and Lee), now dean of Kappa Sigmas of Seattle, William F. Booth (Emory and Henry), an attorney of San Francisco, and Marshall Dickenson (Emory and Henry), an agriculturist of Southern California, all Southern men, considered the establishment of a chapter at the University of California, which they desired to give the name of Rho, but they also found the time inopportune.

Prior to the installation of Beta-Xi, three fraternities approached Kappa Sigmas, but after investigation of the local societies, who desired to petition, they were advised and discouraged from doing so.

When the local society of Beta Kappa Delta tentatively suggested themselves as prospective petitioners they were subjected to a long and rigid investigation by the Stanford chapter and by Kappa Sigma alumni in San Francisco and California.

Among those who investigated and reported on Beta

A Greek Letter Society at California

Kappa Delta were T. S. Evans (George Washington), then on the coast for the summer, C. W. Evans (Cornell), a manufacturer of San Francisco, W. H. Beard (George Washington), now of Rockville, Maryland, whose father was one of the early historical members of Beta Theta Pi, Graham B. Nichols (William and Mary), secretary of the National Press Club, E. G. Ryker (Michigan), E. M. Walsh (Michigan), and P. J. Crosby (Michigan), members of the Oakland bar. Nor may be forgotten "Steve," R. L. Stephenson, the San Francisco insurance man, who two years previous had much to do with the founding of Beta Zeta, which at times has led in the fraternity life at Stanford. Dr. C. W. Fisher (Vermont) was also one of the investigators. He met George Sabichi and Boutwell Dunlap in Los Angeles and as a result of that conference a final recommendation was sent by him to the supreme executive committee. The personal attention given to all those negotiations by F. J. Perry (Stanford), now manager of the Royal Insurance Company at Los Angeles, stands out prominently. He was the leader of those who founded Beta-Xi.

Really the first Kappa Sigma house on the eastern shores of San Francisco bay was established at the Oakland home of T. S. Evans, where Evans, Beard and Nichols dispensed a wide hospitality to Kappa Sigmas during the summer and fall of 1901.

The chapter was installed that August night in 1901, at the "old house" in Berkeley, the first initiations being held in the then unfinished third story. There followed an elaborate dinner and stirring speeches by alumni and

Beta-Xi of Kappa Sigma

the new initiates. Among those present were E. M. Walsh (Michigan), R. H. Black (Cornell), C. W. Fisher (Vermont), R. L. Stephenson (Tennessee), W. H. Beard (George Washington), T. S. Evans (George Washington), E. G. Ryker (Michigan), P. J. Crosby (Michigan), F. W. S. Schmidt (Stanford), E. S. Page (Stanford), C. B. Gillespie (Stanford), F. Hinman (Stanford), N. G. Symonds (Stanford), and F. J. Perry (Stanford).

The foundation that was laid by the charter members of Kappa Sigma and the structure that has been erected thereon, under their guidance, has more than justified the judgment and conservatism of the Fraternity in refusing a charter until it granted one to Beta Kappa Delta.

The first work that the nine men, Laurence Stephen O'Toole, Boutwell Dunlap, William Whitehead Hurlbut, Frederick Holroyd Dakin, jr., Clarence Casebolt Dakin, Charles Thomasson Dozier, Christopher Hatton Aspland, Charles Julius Lyser and Robert Weitbrec Cooper, the charter members of Beta-Xi, had to do was to secure a house. In this they were fortunate enough to secure the aid of F. H. Dakin, sr., the father of the brothers Dakin. It was mainly through him that the opportunity came to obtain the first home at 1739 Euclid avenue, which was purchased before the installation.

The early days of the chapter, as is true of any young organization, were filled with effort, yet the rewards that are won under such circumstances more than repay.

The first year was a good one for the chapter, not alone in the men initiated, but also in the list of college honors attained.



OUR OLD HOME.

A Greek Letter Society at California

The initiates were Allen DeLange Weitbrec, Charles Hamilton Lee, William Campbell Kerr, John Royal Turner, Warren Paul, jr., Frank Abbott Robinson, Carey Roy Browning, Joseph Sterry Lamson, Walter Booth Macaulay, Harry Monroe Howard and Archibald Robinson Ward.

The following honors were held by the members: Dozier, senior class president, second semester, president of the Mining club, captain of the university cadets, faculty honor man in the college of mining; O'Toole, adjutant of the university cadets, varsity football team, big "C"; F. H. Dakin, rally committee; C. C. Dakin, first lieutenant of the university cadets, Channing dramatic club; Lamson, secretary Chess club, chess team; Kerr, vice-president Y. M. C. A.; Browning, associate editor *Daily Californian*, one of board of three editors of 1904 *Blue and Gold*; Weitbrec, captain chess team; Hurlbut, staff of 1904 *Blue and Gold*; Howard, freshman class president, first semester, freshman football team; Paul, associate editor *Daily Californian*; Cooper and Robinson, freshman glee committees.

In May, 1902, the chapter gave its first formal function to the public, a class day reception, which was one of the best in every respect of those given that year. Mrs. Phœbe Hearst, President and Mrs. Wheeler were among the more prominent people there, but the number of local society people who also attended showed that the chapter stood as well outside of college as it did inside.

This first year of the chapter was one that was to place

Beta-Xi of Kappa Sigma

a lasting impression upon its future; it was the formative stage and during it several chapter traditions were created that have lived and distinguish it. Probably the one that is the most apparent is the strong desire to have the chapter members interested in college activities. It has been proven that the loyal college man and the hard worker for his alma mater is one of the best fraternity members. They both demand the same thing and as a taste for one develops, the other comes naturally. The evils of indiscriminate drinking were early recognized and it was lucky that the charter members were of the type to recognize this. They were more thoughtful than the average college student and so the stand that they took against drinking was one to be expected. Scholarship was a thing that they desired among the members and they were successful in no small degree. While it is a fact that the chapter has not at all times lived up to the standard that these men set, yet the good that has been done the chapter in striving to attain these ideals has been incalculable. If the men have failed occasionally, they always had something to call them back to the right path and be an example of what a chapter should be. Standing alone and as the one tradition that has always been strong is the spirit of co-operation that exists among its alumni with the chapter. Peculiarly fortunate in its location, Beta-Xi has never seen the time when the alumni were not always among the most loyal members and the hardest workers for the chapter's advancement.

During the college year, 1901-'02, the university had

A Greek Letter Society at California

gone ahead. There had been a much larger number of big eastern educators at the summer session of 1901. This gave the western students a better insight into eastern methods and ideas. The summer school may develop into a third college semester.

The federal government gave California a very complimentary recognition as an educational institution of the first class, by appointing Professor Bernard Moses, of the department of history, as United States commissioner of education, and Professor Carl Copping Plehn, of the department of economics, chief of the census bureau in the Philippines, under the then governor, William H. Taft.

Ground for the first building under the Hearst plans, the Hearst memorial mining building, was broken in April, 1902. In May, 1902, the late John Hay delivered the commencement day address, in place of President William McKinley. It was the first time that a man of such importance had spoken to California students on such an occasion.

Thus the first year of Beta-Xi fully came up to the expectations of the supreme executive committee both as to the chapter and the college.

The plans for the second year were well under way before the end of the college year and can best be expressed in the words of the chapter correspondent, William Hurlbut, in the *Caduceus* of June, 1902: "We are on the lookout for eight of the best freshmen we can find in California, or the West. We want to be first."

The summer vacation is generally the rock of destruc-

Beta-Xi of Kappa Sigma

tion for all good intentions as regards work connected in any way with the regular college life, but to the enthusiastic Kappa Sigmas of Beta-Xi, such was not the case, but on the contrary it seemed to be a centralizing factor as is plain from the record of the year, 1902-'03.

Nine men made the arduous journey to Bologna:

George Carlos Sabichi, Raglan Alston Tuttle, George Foster Jones, Gerald Anthony, John Elgin Fetzer, George Stitzel Backus, Harry Herbert Baskerville, Ernest Wells and Colbert Coldwell. Wallace Woodlief (Southwestern) affiliated.

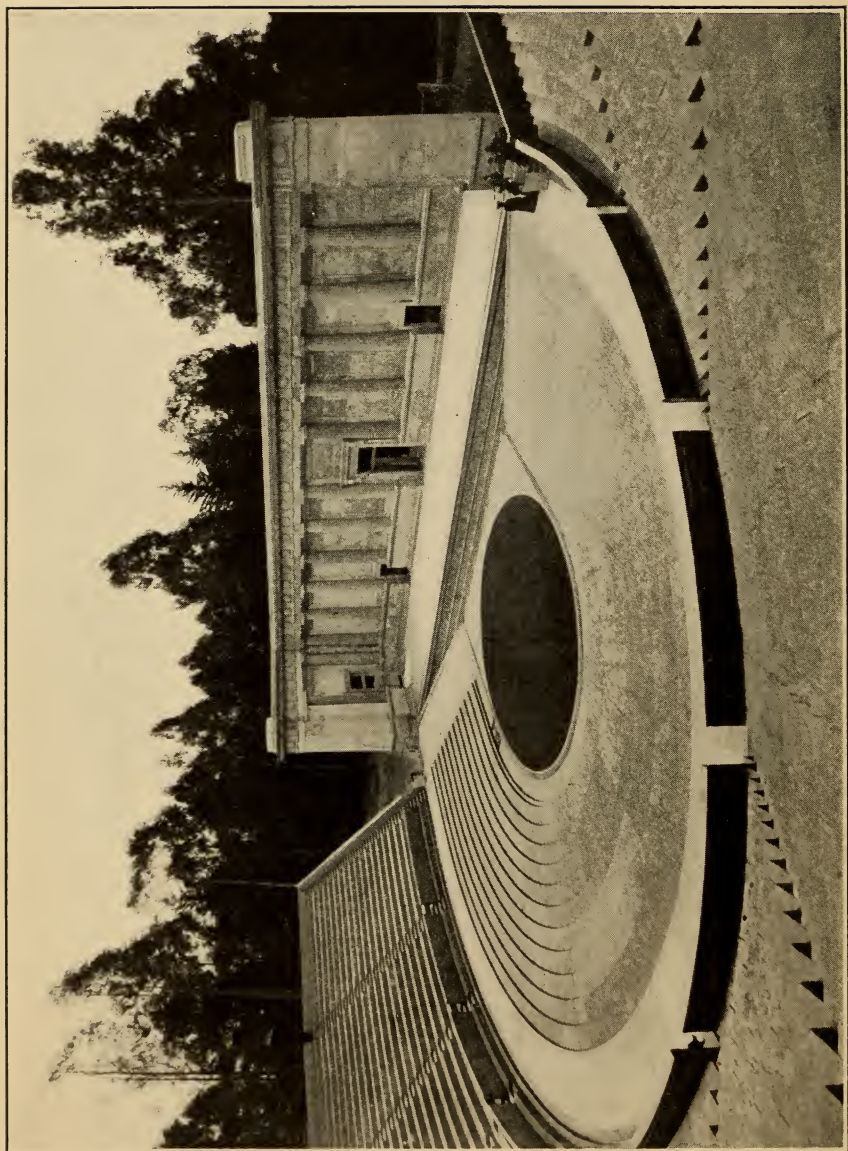
The promise of June, 1902, was fulfilled and extended. With ten old men returned, nine initiated and one affiliated, Beta-Xi started on her way with twenty good workers.

The national side of the Fraternity was not neglected. F. H. Dakin, jr., attended the fifteenth biennial conclave, at New Orleans, in November, 1902, as the delegate of Beta-Xi.

Social life was gone in for more this year. There was the usual class day reception in May, 1903, which was attended by about three hundred and fifty persons.

There were also many dances given at the chapter house, as well as chapter house dinners as a forerunner to attendance at the larger college dances.

The scholarship of the chapter was maintained. This factor was recognized by the faculty. Charles Dozier was an instructor in the college of mining and Archibald Ward had been advanced to assistant professor in the college of agriculture.



THE GREEK THEATER.

A Greek Letter Society at California

Athletics, journalism, politics and in fact, all phases of college life were participated in to their fullest extent by the members of the chapter, as a glance at the records in the biographical department will show. All in all, Beta-Xi kept up and improved upon the ideals and pace set by the charter members.

For the university this was a notable period. Dr. Jacques Loeb, one of the world's most eminent biologists, came to California. Professor Henry Morse Stephens, a recognized leader among the world's historians, and Professor Adolf Casper Miller, now dean of the college of commerce, a lecturer and educator of note in economics, also joined the faculty.

On November 21, 1902, Mrs. Phoebe Hearst laid the corner-stone of the Hearst memorial mining building, and during that visit gave more generously than ever to the university. Hearst Hall was dedicated to the use of the women students. In addition, various bequests for scholarships and for securing the treasures of the East for our museums were made by her.

The Greek theater, the gift of Mr. William Randolph Hearst and the only college auditorium of its kind in the world, was finished in April, 1903. The commencement exercises of the class of 1903, the first to be held in the Greek theater, were doubly memorable because Colonel Theodore Roosevelt made the address.

The formal dedication of the Greek theater took place in the following September, and the occasion was marked by the presentation of *The Birds* in the original Greek.

Although graduating but one man, Lamson, the only

Beta-Xi of Kappa Sigma

senior, in May, 1903, for various reasons, probably good and sufficient, the chapter was able to return but eight men in August, 1903. Yet we find that spirit makes up for lack of numbers, for in the words of George Jones, in the October, 1903, *Caduceus*, "although rather few in numbers, we are all hard at work and ready to do better this year than last."

Here is the true Kappa Sigma spirit. It is easily proven by the list of initiates for that year. Frederic Gerber Dorety, post-graduate (previously proposed for the original Beta Kappa Delta Society), Charles Belford Jones, Harold Bird, Frederick Arthur Richards, William Chester Davis, Alec William MacNichol, Arthur Carroll Hastings and Bertram Rigby.

With this good-sized aggregation of new men came more improvement. The same activity in the pursuit of college honors successfully continued. It is not to be supposed, however, that the mere externals were all that were desired and sought for, but the internal government and brotherly atmosphere, the most important and the basic principle of a chapter, were in evidence, as they were from the beginning.

The university itself continued on its growth. The period of financial prosperity that the country was enjoying stimulated private donations. The university extension work, practically college courses given to those who have not the time nor facilities for attending the university itself, was being rapidly extended and its beneficial results largely increased under the efficient leadership of Professor Stephens.

A Greek Letter Society at California

During August, 1904, the sixteenth biennial conclave of Kappa Sigma was held in St. Louis, but due to the nearness of the new semester, with its rushing season, none of the active men of Beta-Xi were present.

The history of the chapter up to the opening of the college year, 1904-'05, had been a splendid one. The chapter received its first setback when its returning members, fifteen strong, initiated during the whole year but three new men. Not but what they may have been justified by the quality of the 1908 material, but it would seem that more names and of equal value to the chapter could have been added to those of Thomas Ebenezer Stephens, Carlos Alfred Newbery and Samuel Clark Wells. J. Fred Staver (Oregon) affiliated.

Although necessarily deprived of certain advantages through having a smaller freshman class, as regards college honors, and though each first year man had to do double duty around the house, we find that the chapter continued to hold its own.

It was during this year that Charles Jones was elected to Phi Beta Kappa, at the same time being Professor Stephens' assistant in the far-famed course, History 52, by reason of which our worthy brother was dubbed "King of the Campus."

On March 18, 1905, took place an event that will live as long as the university. That day formally ended the historic freshman-sophomore rush, when the classes of 1907 and 1908 joined forces and constructed the big cement "C" on charter hill.

The appearance of the campus had been changed con-

Beta-Xi of Kappa Sigma

siderably during this year. The mining building was assuming shape, while California hall, the new administration building, was nearly completed.

Beta-Xi, in January, 1905, rejoiced when Boutwell Dunlap was appointed national historian of Kappa Sigma, a position which he capably filled until May, 1911, when he resigned, going down in the annals of Kappa Sigma as the man who recovered the history of her earlier years in America.

In an atmosphere of stability the college year of 1905-'06 was entered into, the year which was to culminate in the catastrophe of April 18, 1906, an event which was to disturb many destinies and plans.

The initiates were Cotesworth Bradway Head, Horacio Sanchez-Elia, Charles Albert Warren, jr., Oliver Watson Fletter, Howard Mortimer Leggett, David Duncan Oliphant, jr., and Arthur Butler Sibley.

That the lighter side of college, though indulged in by the members of the chapter, had not affected their earnest efforts for a university education is shown by a report of the scholastic condition of Beta-Xi. David Oliphant in the *Caduceus* of June, 1906, said:

“Our chapter was closing one of its most successful years at the time of the calamity. In spite of the disaster, which closed college without examinations, we graduated our entire senior class. It consisted of Brothers Backus, Jones and Staver.

“Some rather interesting statistics have shown that during the years that Kappa Sigma has been at this university it has graduated more men than any other fra-

A Greek Letter Society at California

ternity except one. These statistics also showed that in 1905 Beta-Xi graduated more men than any other of the twenty odd fraternities at our university."

California hall was occupied early in 1906. This marked the completion of the first building under the Hearst plans, just ten years after the plans had been suggested by Mrs. Hearst. That decade, while apparently not one of rapid growth, was the most successful in the university's history. Its progress was of the substantial kind.

The fire of 1906 has been charged with many things. It is certain that it retarded to some extent the university, for not only were the buildings of the affiliated colleges in San Francisco injured, but there was a total destruction of the Hastings college of law, as well as the Hopkins Art Institute. A large part of the university's income property was lost. But as the spirit of rebuilding and rehabilitation grew in San Francisco and plans were carried out, so too the university by a determined effort continued to progress.

Beta-Xi herself was more fortunate than her sister chapter, Beta-Zeta, at Stanford. The chapter house was practically uninjured, but everything else was well shaken up.

It had occurred to the chapter back in 1903 that the then chapter house, although one of the best at the university, while owned to a very large extent by the chapter, was not of the character as to prove worthy of outright purchase or even to be contemplated under the existing scheme of ownership as a permanent home. An offer

Beta-Xi of Kappa Sigma

was made by a Michigan alumnus of Kappa Sigma to advance \$25,000 for the erection of what would then have been the most magnificent chapter house in the West, but Beta-Xi did not avail herself of it.

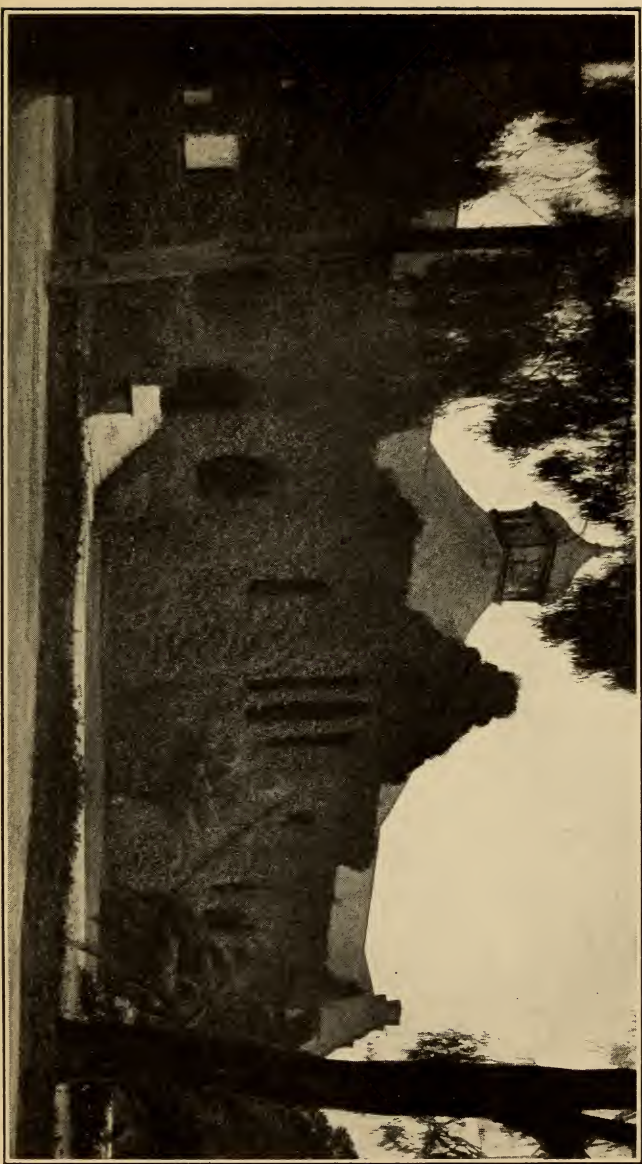
Early in 1905 the chapter house plan came to a definite culmination, when four thousand seven hundred and fifty dollars were subscribed with the intent of starting work in January, 1907, on a suitable building.

That was before the fire. After it the impossibility of the plan was recognized. It even became necessary, through the financial losses of the members, that Beta-Xi keep her first home under a mere lease.

The seventeenth biennial conclave was held at Lookout Mountain during July, 1906. While there was no active delegate from the chapter, she had two men present, Boutwell Dunlap, the national historian, and Sterry Lamson, who was returning from Harvard.

The small number in the chapter in August, 1906, was also an indirect result of the fire. After a strenuous rushing season, a goodly number of men was obtained: Robert Hewitt Williams, John Nelson Hanlon, Frank Birthead Reardon, Edward Luis Vivot, Harold Hilton Rogers, Stanley Lyman King, Michael Charles O'Toole and Wesley William Kergan. Melbourne Roy Tennant (Colorado School of Mines) affiliated.

This was a year of work for Beta-Xi. The fire caused the loss of several upper classmen. Without the natural leaders, the college activities had to be supplanted to some degree by activity within the chapter house. This and the next year, however, furnished salutary lessons to the



THE CHEMISTRY BUILDING.

A Greek Letter Society at California

members of the chapter; it showed them the tremendous value of men who remained to graduate. Not that the men who had been initiated previously did not graduate, but that their value had not been appreciated. Considering this phase of the subject, the college honors that were obtained gain in relative importance.

Another tradition was added to those already established when in March, 1907, Beta-Xi held her first annual chapter dinner at the Hotel Metropole in Oakland. Only active and alumni members of the chapter were present. The idea was so successful that since then the chapter has held its annual chapter dinner, the time being changed to commencement week and the affair being held at the chapter house. Old "grads" from all over the Coast return to renew their youthful days.

Athletics were considerably changed this year. Rugby was substituted for old-style football. California field was completed. This contains the football gridiron and the baseball diamond. Senior hall was opened during this year. It has since shown its value as a developer of college spirit and student self-government. In the latter California is the leader of the college world.

The acquisition of the University farm at Davis and the Kearney estate at Fresno were two important factors in the growth of the college of agriculture.

The initiates for 1907-'08 were John Walter Schmitz, Edmund Pendleton Lipscomb, Lucien George Matthews, George Francis Braun, Irving Wright Benton, Bryan Raymond Dyer and Thomas Boorman Smith. William Constantine Bell (Texas) affiliated.

Beta-Xi of Kappa Sigma

It was a relatively large number, for the class of 1911 was extremely poor as regards fraternity material, but as our house was controlled by our alumni our expenses were low. It was not a case of having to "fill the house."

Athletic regulations prevented us from having a football "C" by Walter Schmitz and a track "C" by Thomas Smith, but the spirit of trying was there, and so, though not entirely successful in their endeavors, the members obtained excellent training in all lines of college activities. For the number of actual honors won, the biographical department will suffice.

The college year opened auspiciously for the university. The Hearst memorial mining building was formally dedicated. Thus California became possessed of the most modern and best equipped building in the world for the study of mining.

Another notable event came at the end of the year, in April, when the students' infirmary was opened, thus insuring to all the best of medical attention and care while attending college.

Student customs and traditions were revived and added to during the year. The carnival in the fall semester and labor day in the spring semester both tended to unite the students, a very desirable thing in any university and particularly hard of accomplishment at the University of California, due to local conditions.

In May, the house was visited by a number of Kappa Sigma naval officers. The American fleet was in San Francisco bay, on its way around the world. Visits by men of other chapters have always been numerous and

A Greek Letter Society at California

pleasurable. The many touring brothers on the Coast invariably stop at the house while in this vicinity. It has been the headquarters while college was in session and during vacation for alumni who have come to "the bay," as well as for great university celebrations when many of the graduates return. The nearness of the Presidio army post has made frequent visits by army men possible.

During the summer of 1908 the eighteenth biennial conclave of Kappa Sigma was held at Denver. Howard Leggett represented the chapter. Boutwell Dunlap, the national historian, was there in his official capacity.

The fall semester of 1908-'09 started with a rush. The chapter was led by one of its most enthusiastic and loyal members, Leggett. To give him all the credit that he deserves would be impossible, but he may be set down as the cause of the many good things that the chapter acquired in his last year.

The first results were new members: Rafael Leopold Vivot, Robert Hazeltine Clark, John Franklin Hale, Eugene James Seadler, Amos William Elliott, Louis John Pfau and Marshall Gould Williamson.

These men were an excellent acquisition. They were of various talents. Out of the six men of 1912 initiated, five are with their class at the end of their junior year. Surely Beta-Xi had profited by past experience.

It was a good year for the chapter, becoming better all the time until, at the annual chapter dinner in May, 1909, Colbert Coldwell announced that Beta-Xi would have a new home for the coming semester. It was not to be

Beta-Xi of Kappa Sigma

owned by the chapter, but was to be leased for five years, being built under the direction of the alumni. In addition to this, he produced the subscription list for a chapter-owned house that had been drawn up in 1905, and that night six thousand seven hundred dollars were added to it.

At the same dinner Howard Leggett presented the chapter with a beautiful silver loving cup, on which each wearer of the "C" has engraved his name and the date and the occasion of his winning his letter.

As a means of keeping the alumni in touch with what was being done in the active chapter, it was decided that in May of each year a printed letter reviewing the events of the period should be sent them. This was inaugurated in 1909 and has since appeared yearly.

The corner-stone of the Doe library was laid in November, 1908. The general appearance of the campus was improved by the construction of several cement bridges over Strawberry creek, the one at the Telegraph entrance being the site of the forty thousand dollar Sather gate.

At this time Kappa Sigma established her sixth strong chapter west of the Rocky mountains. Although previously having more trans-montane chapters than any other fraternity, this placed her as the leader beyond doubt in both East and West.

The summer of 1909 was spent in the pleasant manner of inspecting the new house, the constant query being, "Will she be ready for the fall semester?"

But the year 1909-'10 opened with Beta-Xi occupying her first house, with the new home rapidly assuming shape.



THE MECHANICS BUILDING.

A Greek Letter Society at California

The initiates were Charles Newcomb Munger, Forrest Albert Plant, Richard Whitney Rust, Rowland Lee Chamberlain, Percival Vally Brun, John Frederic Miller, Franklin Watson Dozier, Stirling Benjamin Peart, Burton Byron Brace, John Raymond Flynn and Frank Howe Dyer.

This was a great year for the entire student body as well as Beta-Xi, for it was in November, 1909, that California put an end to a long line of varsity football defeats and Beta-Xi had a man at outside five-eighths, Amos Elliott, of whom "Bobs" of the San Francisco *Chronicle* said:

"The brilliant passing movements of the blue and gold backs were the features of the day, Amos Elliott being undoubtedly the particular bright star of the day. Time after time did this little hero initiate bouts of passing that gained worlds of ground for his side and he was also a Trojan in defense. On one occasion he ran through a scattered field for a gain of sixty yards when he was seized on his blind side by Dutch Roth, who overtook him in dashing style. Had Elliott kept on his way without paying special attention to the whereabouts of Holman he would surely have capped the most brilliant effort of the day by scoring. His goal kicking, as was expected, was also a valuable asset to his side, as he steered the ball safely over the bar on three occasions. Elliott's name will go down in California football history for many years to come."

In addition to Amos Elliott, we had Stirling Peart as substitute wing three-quarters.

Beta-Xi of Kappa Sigma

In the spring semester came the election of Robert Clark as editor of the 1912 *Blue and Gold*.

With the above two as leading honors and Beta-Xi's move into her new home on December 1, 1909, the year was a well rounded one.

Feeling that a description of the house would be desirable to those of our alumni who have not as yet had an opportunity to return to California, the following reprint from the *Caduceus* of June, 1910, by John Hale, is given:

"The new house is set back about forty feet from the sidewalk, giving us a fine front lawn and a magnificent marine view from the western side of the house. On a clear day one is able to see the Farallone islands through the Golden Gate, which lies due west. The side door is well set back, giving us a large porch. The entrance is made into a reception hall about twelve feet square; to the right is the living room and to the left the dining room. The kitchen opens off the dining room and a lavatory off the hall. Each of the main rooms is 20 x 30 feet and has a hardwood floor and fireplace. There are eight-foot openings between these rooms, giving us the best dancing floor on the campus. Velour portieres are used instead of folding doors.

"The entire decorative scheme on this floor is mission style, monk's cloth overhangings being used at the windows, while the Balyara rugs are solid colors, woven specially for us. The color scheme is brown in the living room and blue in the dining room, which has a six-foot panel and stein rail above.

"The stairs to the second floor are in the rear of the

A Greek Letter Society at California

hall. On this floor are six bedrooms, a smoking room, two baths, shower and toilets. On the third floor are three bedrooms, bath, toilet and trunk room. There is also a porch on this floor from which we get our marine view, which can never be cut off, owing to the slope of the ground.

“In the basement are the servants’ rooms, a furnace room and a chapter hall, which is 20 x 30 feet, being as large as the dining room. This room is paneled about four feet up, the woodwork being black and the walls red. Under the living room we have a partially excavated space, 20 x 30, in which we expect to build a billiard room.

“The exterior of the house is white, while the inside, except on the first floor, which is weathered oak, is natural finish. The rooms were all tinted according to the occupant’s taste.

“Everything about the house is modern and of the best. Most of our furniture was made to order, being larger than the ordinary, as we are buying with an eye to the future, when we shall build our own house. All in all, we can say that no house on the campus is so modern or convenient as ours nor is any kept up in better style.”

An innovation by the faculty to aid the fraternities was made in April, 1910, when a schedule of the scholastic standing of each fraternity was published, showing Beta-Xi standing eleventh. It was extended during the year 1910-'11 by rendering twice a semester a statement of the standing of the lower classmen, with a yearly record of general scholastic standing, from which it was determined that fraternities generally had fallen back. Beta-Xi

Beta-Xi of Kappa Sigma

lost one place. The system is yet young. It has already proven its benefits in preventing the loss of so many freshmen by the "cinch out" method. It is one of the things that shows that California is up with the leaders in the university world. It is the present sentiment that the fraternities should receive official recognition and in return justify their existence by aiding the faculties to raise scholarship.

An All-American Rugby team toured Australia during the summer of 1910. Most of the team came from California. Amos Elliott, of course, made the trip. The varsity has also each winter made a trip to British Columbia, Amos Elliott and Stirling Peart accompanying it each time.

The nineteenth biennial conclave was held in New York in July, 1910. Beta-Xi had three men there, being second in the race for the conclave cup. Those representing the chapter were Boutwell Dunlap, national historian, Sterry Lamson, district grand master of district XIII, and Wesley Kergan, active delegate.

The initiates of 1910-'11 were Edwin William Carlin, Edward Paul Denny, James Harry McCormack, Glenn Frank Engle, Coyle Clay Turner, George Byram Marsden, Sheldon Arthur Allen, Ronald Thomas Strong, William Morrell Hale, Leo William Meyer, Thomas Balfour Mackie Dunn, Thomas Comfort Haven, Frank Braden Armstrong and Floyd Howard. Harold Edwards Bates (Oregon) affiliated.

Again did California beat Stanford, and not only did Amos Elliott play a star game, but immediately after-

A Greek Letter Society at California

ward, unprecedented in the history of athletics at California, he was elected captain for the next year. Stirling Peart made the team as wing three-quarters. Sheldon Allen played the same position on the second team, while William Hale did like work on the freshman team.

In the second semester Richard Rust was elected to manage the 1913 *Blue and Gold*.

The past year has seen the opening of the Boalt hall of law and the completion of the Sather gate. The new agricultural building is well under way. The Doe library will be opened in August, 1911.

Plans have been made to construct a new cinder path in Co-ed canyon, while already a swimming pool has been opened there. The last of a dozen new bitumen tennis courts were opened this year.

During the summer of 1911, John Hale went with the California team to the Western colleges conference meet at Minneapolis, taking third in the shot put. Stirling Peart went to Europe with the Glee club.

At the chapter dinner of 1911 the building of a chapter house was revived. As a result Colbert Coldwell, Sterry Lamson and Arthur Hastings are now at work upon a scheme which will give the chapter a new home. The printed matter is being prepared and a call will be made during July, 1911.

District XIII held its first conclave in February, having as the guest of honor the W. G. M. C., Brother Denious of Denver. This will be an annual affair in the future.

The San Francisco Alumni Chapter united to make this conclave a success. This chapter was organized in August,

Beta-Xi of Kappa Sigma

1901, at the Berkeley chapter house, and has at all times been active in the interests of Kappa Sigma. As far back as 1901 or 1902, it held a banquet in the old Palace hotel. The members met for luncheon every Tuesday at various places, principally at the old Poodle Dog. Informal dinners were held at the Techau Tavern in 1902, although Sanguinetti's was favored on special occasions. During 1906 and 1907, just after the great fire, the Tuesday lunches at the Mint were the only gatherings held. They were continued there until 1910, when the lunch place was changed to Jules'. In 1908 and 1909, informal dinners were held at Frank's and the Bismarck. Frequently active members from the California chapter and occasionally active members from the Stanford chapter, who happen to be in town, join in these dinners and lunches. The lunches are also a meeting place for brothers from the east who are touring California. In May, 1908, an alumni banquet was held at the Fairmont. This has since grown into a yearly affair, the meeting place being the Palace. It is a feature of the district conclave.

Following the blue ribbon work of Von, the chapter's dog, famous on the California campus, at the Oakland kennel show, a successful search was made for his pedigree. It was determined that he is the descendant of dogs bred in the purple.

It is now planned to hold a dinner at the chapter house on August 24, 1911, to commemorate the tenth anniversary of the chapter's installation.

It is inevitable that in any such account many of the finest and most interesting incidents must be omitted.



THE CAMPUS AND BERKELEY FROM CHARTER HILL.

A Greek Letter Society at California

Especially is this true of matters of a more personal nature, the real history of the fraternity. Of the life-long friendships engendered within the chapter house, the spirit of co-operation surviving the college days, the plans made, the work done, the joy of a brother's victory and triumph and the sympathy in his sorrow, the sweetness of association and the academic discussions—of these things there can be nothing. Only one who has lived the student life can know. And not alone because Beta-Xi is about to celebrate her tenth anniversary or that she is proud of her record during these past ten years is this sketch felt justified. This chapter has men who are making their mark in Europe, Africa, South America, Asia and this country. To them this will be the only written tie binding them to their alma mater and their chapter and through her to their Fraternity. This of itself would be a complete justification if such were necessary. Beta-Xi has led in athletics at times, in scholarship at times, and at all times has tried to instill in her members a loyalty to themselves, their Fraternity and their alma mater.

EXPLANATORY

The records of the chapter members are arranged as follows:

Date of initiation.

Full name and latest address.

Present occupation and political office; date and place of birth; names of father and mother; preparatory schools attended; colleges attended, degrees and date of degree; college record; national fraternity offices held; record since leaving college; business address; articles and books written; clubs and other societies; date of marriage, wife's maiden name, name and address of wife's parents; home address, if present one be temporary.

The usual abbreviations have been used.

BIOGRAPHICAL

Initiated August 24, 1901.

LAURENCE STEPHEN O'TOOLE, 2119 Berryman Street, Berkeley.

Attorney ** b. Aug. 11, 1878, at San Francisco ** Dr. Michael Cornelius and Louisa (McCormac) O'Toole ** Boone's academy ** Univ. of Cal., 1896-'97; 1899; 1901; 1902-'06; LL.B. 1905; A. B. 1906 ** lieut. and adj. univ. cadets; pres. Newman club; sub. guard varsity football team; big "C"; pres. sen. law class; Phi Delta Phi ** Capt. National Guard ** Mechanics' Bank Bldg., San Francisco.

BOUTWELL DUNLAP, San Francisco.

Attorney; Consul of the Argentine Republic ** b. Nov. 14, 1877, at Sacramento ** William and Sarah Jane (Robinson) Dunlap ** Sacramento h. s. ** Univ. of Cal., 1896-'99; 1900-'01; Catholic Univ. of America, 1902-'05; Georgetown Univ., 1904; B. L. 1901; LL. B. 1905; LL.M. 1910 (Catholic Univ. of America) ** At Cal., temp. pres. fresh. class; asst. ed.-in-chief *Daily Californian*; resigned as ed. 1900 *Blue and Gold*; rec. com. soph. hop; intercol. debating com.; speaker Maguire club; honorary member Newman club; Philosophical Union; at Georgetown, Delta Chi; Theta Nu Epsilon; ch. constitutional com. Delta Chi national convention, Toronto, 1905 ** National Historian of Kappa Sigma, 1905-'11 ** Nominated (but declined) for Congress, first Cal. district, 1904; in charge of consulate of Uruguay, San Francisco, 1909; rec. sec. of Cal. Genealogical Soc.; member com. San Francisco Bar Assn. on reform of civil and criminal

Beta-Xi of Kappa Sigma

procedure (report published, 1910); honorary Historian Sac. Soc. of Cal. Pioneers ** First National Bank Bldg., San Francisco ** Author of *Bibliography of the Chinese Question in the United States* (with Robert Ernest Cowan); *The Canon Law and the Common Law* (in preparation); *Kappa Sigma Book*; *Early Letters and Papers of Kappa Sigma*; *Secret Book of Kappa Sigma*; contributor to newspapers and racing periodicals ** Member Amer. Hist. Assn.; Va. Hist. Soc.; Cal. Genealogical Soc.; Amer. Pol. Sc. Assn.; Fellow Amer. Statisc. Soc.; Sons and Daughters of Sac. Soc. of Cal. Pioneers; University Club, S. F.; Army and Navy Club, S. F.; Press Club, S. F.; Soc. of Colonial Wars in State of Cal.

WILLIAM WHITEHEAD HURLBUT, 4180 Woodlawn Avenue, Los Angeles.

Civil and mining engineer ** b. Dec. 10, 1879, at Cheyenne, Wyoming ** Walter Scott and Arabell (Whitehead) Hurlbut ** Denver h. s. and Denver normal and prep. s. ** Colorado School of Mines, 1899-1901; Univ. of Cal., 1901-'02; Stanford, 1902-'03 ** Drafting and engineering; now chief draftsman, L. A. Aqueduct, Central Bldg., Los Angeles ** m. July 16, 1903, to Elena Wolfskill, d. of Mr. and Mrs. J. W. Wolfskill of Redondo Beach, California.

FREDERICK HOLROYD DAKIN, JR., 1440 Spring Street, Berkeley.

Mining engineer ** b. Apl. 7, 1879, at San Francisco ** Frederick Holroyd and Virginia Frances (Casebolt)

A Greek Letter Society at California

Dakin ** Boone's academy ** Univ. of Cal., 1898-1902; B. S. 1902 ** Delegate, National Conclave, New Orleans, 1902 ** Copper mining; 26 Montgomery street, San Francisco ** m. June 1, 1907, to Margaret McKenney, d. of Mr. and Mrs. G. W. McKenney of Berkeley.

CLARENCE CASEBOLT DAKIN, Modesto, California.

Architect ** b. Mar. 28, 1880, at San Francisco ** Frederick Holroyd and Virginia Frances (Casebolt) Dakin ** Boone's academy ** Univ. of Cal., 1900-'02; 1907-'08 ** secy. Chess club; dramatics ** 26 Montgomery street, San Francisco ** m. Oct. 23, 1902, to Etta Elizabeth Lyser, d. of Prof. and Mrs. A. Lyser of Berkeley.

CHARLES THOMASSON DOZIER, 1934 Virginia Street, Berkeley.

Mining engineer ** b. Aug. 5, 1879, at Oakland ** Charles Thomasson and Fannie (Littlejohn) Dozier ** Berkeley h. s. ** Univ. of Cal., 1897-1905; B. S. 1902 ** capt. univ. cadets.; pres. (second semester) sen. class; pres. Mining club; asst. in mining, 1902-'05; pres. grad. students; Sigma Xi ** Pres. Dozier-Putnam Co., Redding, Cal. ** General mining business.

CHRISTOPHER HATTON ASPLAND, Transvaal, South Africa.

Mining engineer ** b. Jan. 16, 1880, at San Gabriel, Cal. ** Sydney and Kate Olivia (Russell) Aspland **

Beta-Xi of Kappa Sigma

Victoria collegiate s. and Berkeley h. s. ** Univ. of Cal., 1898-1902; B. S. 1902 ** Sampling and mine surveying; P. O. Box 5, Knights Landing, Transvaal, South Africa.

CHARLES JULIUS LYSER, 3018 Fulton Street, Berkeley.

Mining engineer ** b. Aug. 14, 1877, at San Francisco ** Prof. Albert and Alice (Hilton) Lyser ** Lowell h. s. ** Univ. of Cal., 1899-1902; 1903-'04 ** Mining supt. and expert ** m. Dec. 25, 1905, to Abigail Stackpole, d. of Mr. and Mrs. F. Stackpole of Denver, Colorado.

ROBERT WEITBREC COOPER, 1136 South Alvarado Street, Los Angeles.

Business ** b. Apl. 30, 1881, at Denver, Col. ** Kemp G. and Mary E. (Bucher) Cooper ** Pantages Theater Bldg., Los Angeles ** m. Apl. 2, 1907, to Grace G. Wolfskill, d. of Mr. and Mrs. J. W. Wolfskill of Redondo Beach, California.

Initiated September 6, 1901.

ALLEN DE LANGE WEITBREC, Hotel Angelus, Denver, Colorado.

Writer ** b. Nov. 11, 1884, at Colorado Springs, Col. ** Robert Foster and Cecilia (Allen) Weitbrec ** Denver h. s. ** Univ. of Cal., 1901-'03; 1904-'05; capt. chess team; ch. chess com.; ed. staff *Occident* ** Inventing and promoting.

A Greek Letter Society at California

CHARLES HAMILTON LEE,

Lone Pine, California.

Civil engineer ** b. Feb. 1, 1883, at Oakland ** Rev. Hamilton and Genevieve (Littlejohn) Lee ** Berkeley h. s. ** Univ. of Cal., 1901-'05; B. S., 1905 ** capt. univ. cadets ** Central Bldg., Los Angeles.

WILLIAM CAMPBELL KERR,

Korea.

Minister and missionary ** b. Aug. 23, 1883, at Oconto, Wis. ** Rev. John Henry and Margarett (Campbell) Kerr, D. D. ** Mt. Tamalpais milit. academy ** Univ. of Cal., 1900-'02; Princeton, 1902-'05; Auburn (N. Y.) Theological Seminary, 1905-'08; A. B. 1904; A. M. 1905; ordained to ministry 1908 ** At Princeton, banjo club; Phi Beta Kappa; graduated magna cum laude; classical fellowship ** At Auburn, pres. Y. M. C. A.; band; organist; baseball team ** Missionary under Presbyterian Board, Korea.

JOHN ROYAL TURNER,

Humboldt, Nevada.

Mining ** b. Nov. 28, 1880, at Apple River, Ill. ** John Parson and Nellie (Hess) Turner ** Salt Lake h. s. ** Colorado School of Mines, 1900-'01; Univ. of Cal., 1901-'03 ** General mining; now Supt. Imlay Mining Co. ** Home, 922 East Second South Street, Salt Lake, Utah.

Beta-Xi of Kappa Sigma

WARREN PAUL, JR., Gooding, Idaho.

Salesman ** b. Nov. 6, 1882, at Denver, Col. ** Warren and Catherine (Keelan) Paul ** Salt Lake h. s. ** Univ. of Cal., 1901-'03; Stanford, 1903-'04 ** At Cal., *Daily Californian*; at Stanford, *Daily Palo Alto* ** General salesman, mining business; now General Sales Agt. Gooding Townsite Co. ** m. Mar. 15, 1909, to Maud Gooding Emerson, d. of ex-Gov. and Mrs. F. R. Gooding of Gooding.

Initiated October 18, 1901.

FRANK ABBOTT ROBINSON, Sonora, California.

U. S. Forestry Dept. ** b. July 13, 1881, at Toronto, Canada ** James Benson and Luella (Cross) Robinson ** Lowell h. s. and Anderson milit. academy ** Univ. of Cal., 1901-'03; Cooper Medical College, 1904-'05 ** Theta Nu Epsilon; Omega Psi Phi ** Contractor; now a forest ranger at Sonora ** Home, 902 Central avenue, San Francisco.

CAREY ROY BROWNING, Tustin, Orange County, California.

Farmer ** b. Apl. 6, 1879, at Penryn, Cal. ** Benjamin and Edith Jane (Davis) Browning ** Oakland h. s. and California college academy ** Univ. of Cal., 1900-'04 ** lieut. univ. cadets ** man. ed. *Daily Californian*; asst. man. '04 circus; man. '04 jun. day; one of three eds. 1904

A Greek Letter Society at California

Blue and Gold; Winged Helmet ** m. Nov. 16, 1910, to Hazel Belle Pitcher, d. of Mr. and Mrs. H. H. Pitcher of San Jose, California.

Initiated February 1, 1902.

JOSEPH STERRY LAMSON,

Berkeley Inn, Berkeley.

Attorney; inheritance tax appraiser 1911— ** b. Aug. 16, 1883, at Saginaw, Mich. ** Joseph Sterry and Elizabeth (Gaylord) Lamson ** Hayward h. s. ** Univ. of Cal., 1899-1904; Harvard, 1904-'06; A. B. 1903; LL. B. 1906 ** At Cal., chess team; chess com.; at Harvard, graduated cum laude ** D. G. M. District XIII of Kappa Sigma, 1910— ** Monadnock Bldg., San Francisco ** Home, Hayward, California.

HARRY MONROE HOWARD,

2011 Parker Street, Berkeley.

Advertising ** b. Aug. 1, 1882, at Spokane, Wash. ** George Washington and Georgia (Lamb) Howard ** Oakland h. s. ** Univ. of Cal., 1901-'05; B. S. 1905 ** varsity track team; varsity football team; pres. (first semester) fresh. class; vice-pres. soph. class; fresh. glee com.; fresh. football team; football numerals; big "C"; Winged Helmet; Golden Bear ** Mining, real estate; now on the advertising staff S. F. *Examiner* ** m. May 1, 1906, to Daisy Lee French, d. of Mr. and Mrs. E. E. French of Omaha, Nebraska.

Beta-Xi of Kappa Sigma

WALTER BOOTH MACAULAY,
1778 Tenth Avenue, Oakland.

Draftsman ** b. Nov. 20, 1880, at Arlington, N. J. **
Rev. Joseph and Emma (Williams) Macaulay ** Oakland
h. s. ** Univ. of Cal., 1901-'05 ** Union Iron Works, San
Francisco ** m. Feb. 6, 1906, to Lydia Alta Dabovitch, d.
of Mr. and Mrs. S. E. Dabovitch of Oakland.

Initiated February 17, 1902.

ARCHIBALD ROBINSON WARD,
Philippine Islands.

U. S. veterinary service, P. I. ** b. Sept. 12, 1875, at
Ithaca, N. Y. ** Albert Riley and Henrietta (Robinson)
Ward ** Ithaca h. s. ** Cornell, 1894-1901; Univ. of Cal.,
1901-'02; B. S. 1898; D. V. M. 1901 ** Sigma Xi ** Asst.
in Dairy Bacteriology at Cornell, 1898-1901; Asst. prof.
of bacteriology and director of the State hygienic lab-
oratory of Cal. ** Author of various studies ** Chief U.
S. veterinary service, P. I.

Initiated August 21, 1902.

RAGLAN ALSTON TUTTLE,
Auburn, California.

Attorney ** b. Dec. 13, 1881, at Oakland ** Hon. Fred-
erick Pierson and Susan (Davis) Tuttle ** Placer county
h. s. ** Univ. of Cal., 1901-'05; Hastings College of Law,
1905-'07; B. L. 1905; LL. B. 1907 ** capt. and quarter-
master univ. cadets; ch. rec. com. fresh. glee; rec. com.
soph. hop; ch. jun. prom; pres. (first semester) sen.

A Greek Letter Society at California

class; Phi Delta Phi ** Attorney, Panama Ry.; now member of Tuttle and Tuttle, Auburn ** m. Jan. 4, 1909, to Calla Claire Pedlar, d. of Mr. and Mrs. F. A. Pedlar of Oakland.

GEORGE CARLOS SABICHI, **Bakersfield, California.**

Physician and surgeon ** b. Nov. 4, 1879, at Los Angeles ** Hon. Frank and Magdalena (Wolfskill) Sabichi ** Hoyt's and St. Vincent's ** St. Vincent's, 1895-'99; Univ. of Cal., 1899-1901; Univ. of So. Cal., 1902-'04; B. S. 1899; M. S. 1900; M. D. 1904 ** At St. Vincent's, ed. S. V. C. *Student*; pres. Lyceum; football team; at U. S. C., Nu Sigma Nu; Theta Nu Epsilon ** House physician, L. A. County Hospital and Old Soldiers' Home ** m. June 26, 1907, to May Isabel Myers, d. of Mr. and Mrs. J. R. Richards of Los Angeles.

Initiated September 19, 1902.

GEORGE FOSTER JONES, **Oroville, California.**

Attorney; Dist. Atty. Butte Co., 1911— ** b. Nov. 18, 1883, at Oroville ** Hon. Albert Foster and May Stanton (Evans) Jones ** Oroville h. s. ** Univ. of Cal., 1902-'06; Yale, 1906-'08; B. L. 1906; LL. B. 1908 ** At Cal., fresh. crew; varsity track team; ch. sen. extra. com.; At Yale, Book and Gavel; mgr. assn. football team ** m. Nov. 22, 1910, to Marie Gesford, d. of Judge and Mrs. H. C. Gesford of Napa.

Beta-Xi of Kappa Sigma

Initiated September 20, 1902.

GEORGE STITZEL BACKUS, Britannia Beach, British Columbia.

Mining engineer ** b. Sept. 2, 1883, at Walla Walla, Washington ** Lieutenant (U. S. A.) George B. and Amanda Katherine (Stitzel) Backus ** Oakland h. s. ** Univ. of Cal., 1902-'06; B. S. 1906 ** Assaying and mining ** m. Nov. 21, 1906, to Harriet Anna Fish, d. of Mr. and Mrs. A. L. Fish of Oakland ** Home, Colville, Washington.

WILLIAM GOODRICH DANDY, 2521 San Jose Avenue, Alameda.

Salesman ** b. Mar. 12, 1880, at Arkansas City, Kansas ** Charles Pelham and Carrie Ellen (Goodrich) Dandy ** Los Angeles h. s. ** Univ. of Cal., 1902-'03 ** varsity crew ** Automobile salesman ** m. June 8, 1905, to Mary C. Jessup, d. of Mr. and Mrs. R. W. Jessup of Oakland.

GERALD ANTHONY, 436 East Forty-fifth Street, Portland, Oregon.

Real estate ** b. July 9, 1884, at Alameda ** Edwin Requa and Helena Virginia (Hitchcock) Anthony ** Alameda h. s. ** Univ. of Cal., 1902-'04 ** General lumber business; now with Keasey, Humason and Jeffery, Chamber of Commerce Bldg., Portland ** m. Apl. 21, 1908, to Edwina Baird Mastick, d. of Mr. and Mrs. C. L. Mastick of Portland.

A Greek Letter Society at California

JOHN ELGIN FETZER,

Denver, Colorado.

Attorney ** b. Sept. 2, 1883, at Denver ** John Lockhart and Lucretia (Elgin) Fetzer ** Denver h. s. ** Univ. of Cal., 1902-'03; Univ. of Mich., 1903-'06; Columbia, 1906-'08; A. B. 1906; LL. B. 1908 ** At Mich., ass. ed. Ann Arbor *Republican*; asst. bus. mgr. *Michigan Daily*; jun. hop com.; pres. Rep. club; class track team; secy. nat. col. rep. league ** Asst. Dist. Atty. Logan County, Col.; Atty. U. P. Ry.; Secy. and Counsel North Sterling Irrigation Dist.; now, Equitable Bldg., Denver ** m. June 24, 1909, to Elizabeth Babcock, d. of Mr. and Mrs. C. F. Babcock of Detroit, Michigan.

HARRY HERBERT BASKERVILLE,

1470 East Twenty-first Street, Los Angeles.

Public accountant ** b. Apl. 30, 1880, at Los Angeles ** Los Angeles h. s. ** Univ. of Cal., 1902-'03; Stanford, 1903-'04 ** Auditorium Bldg., Los Angeles ** m. Apl. 25, 1905, to Mary E. Dalton, d. of Mr. and Mrs. G. P. Dalton of Los Angeles.

Initiated October 14, 1902.

COLBERT COLDWELL,

2333 Cedar Street, Berkeley.

Real estate ** b. Apl. 11, 1883, at Durango, Cal. ** Nathaniel Colbert and Ellen (Robinson) Coldwell ** Boone's

Beta-Xi of Kappa Sigma

academy ** Univ. of Cal., 1902-'03 ** Member of Tucker, Lynch and Coldwell, Russ Arcade, San Francisco ** Southern Club, S. F. ** m. Aug. 30, 1905, to Johanna Leaton, d. of Mr. and Mrs. J. C. Leaton of Mt. Pleasant, Michigan.

ERNEST WELLS, Portland, Oregon.

Real estate ** b. Feb. 26, 1882, at Santa Rosa, Cal. ** Phillip and Margaret Mellesie (Clark) Wells ** Berkeley h. s. ** Univ. of Cal., 1902-'03 ** fresh. football team; glee club; pres. (first semester) fresh. class ** Broker; now with C. P. Wells & Co., Abington Bldg., Portland.

Affiliated August, 1902.

WALLACE WOODLIEF, Texas.

Business ** Initiate of Iota chapter at Southwestern.

Initiated September 3, 1903.

CHARLES BELFORD JONES, Coachella, California.

Business ** b. Sept. 2, 1884, at St. Louis, Mo. ** Benjamin Franklin and Ida (Daniels) Jones ** San Diego h. s. ** Univ. of Cal., 1901-'05; B. L. 1905 ** gen. com. sen. week; reader in history; Phi Beta Kappa; pres. ass. students, summer session, 1905 ** Law clerk; newspaper editor; now with Starrett & Jones Oil Co., Coachella.

A Greek Letter Society at California

WILLIAM CHESTER DAVIS,
2440 Washington Street, San Francisco.

Mining ** b. Nov. 2, 1883, at Salt Lake, Utah ** Lewellyn and Elizabeth Laura (Davis) Davis ** Salt Lake h. s. ** Univ. of Cal., 1903-'07 ** fresh. football team; football numerals; pres. (first semester) fresh. class; De Koven club ** Vice-pres. and Mgr., Shoshone Quicksilver Co., Austin, Nevada ** m. Oct. 16, 1908, to Mary Luella Somerville, d. of Mr. and Mrs. W. Somerville of San Francisco.

FREDERICK ARTHUR RICHARDS,
Placerville, California.

Mining ** b. Nov. 2, 1883, at Nevada City, Cal. ** James and Mary Louisa (Barnett) Richards ** Placerville h. s. and Boone's academy ** Univ. of Cal., 1903-'07 ** General mining business.

HAROLD BIRD,
248 Fourth East Street, Salt Lake, Utah.

Engineer ** b. Sept. 5, 1883, at Salt Lake ** William Harold and Laura Jane (Lapish) Bird ** Salt Lake h. s. ** Univ. of Cal., 1903-'06 ** Utah Fuel Co., Salt Lake.

ALEXANDER WILLIAM MacNICHOL,
1456 Fulton Street, San Francisco.

Mining ** b. Jan. 14, 1885, at San Francisco ** Howard Robinson and Johanna E. (Drucker) MacNichol ** Lowell and Lick h. s. ** Univ. of Cal., 1903-'08; B. S. 1908 ** class crew ** Mining; assaying, Oakland.

Beta-Xi of Kappa Sigma

Initiated January 18, 1904.

BERTRAM RIGBY,
2136 Prince Street, Berkeley.

Salesman ** b. Nov. 21, 1885, at Auckland, New Zealand ** William and Ellen A. (Cruikshank) Rigby ** Alameda h. s. ** Univ. of Cal., 1903-'07; B. S. 1907 ** m. July 14, 1909, to Minnie Lieber, d. of Mr. and Mrs. W. K. Lieber of Alameda.

ARTHUR CARROLL HASTINGS,
San Francisco.

Real estate ** b. June 17, 1884, at Auburn, Cal. ** John Milton and Martha Ann (Brown) Hastings ** Marysville h. s. ** Univ. of Cal., 1903-'06 ** man. of 1907 *Blue and Gold*; secy. Press club; Gun club ** Bank teller; now with Tucker, Lynch and Coldwell, Russ Arcade, San Francisco.

Initiated May 2, 1904

FREDERIC GERBER DORETY,
202 Thirty-sixth Avenue, North, Seattle, Washington.

Attorney ** b. July 20, 1878, at Boston, Mass. ** Joseph Henry and Rose Elizabeth (Gerber) Dorety ** Oakland h. s. ** Univ. of Cal., 1896-1900; 1903-'04; Harvard, 1900-'03; B. L. 1900; LL. B. 1903 ** At Cal., pres. A. S. U. C.; pres. soph. class; man.-ed. *Daily Californian*; ass. ed. *Occident*; lieut. univ. cadets; Golden Bear ** Lecturer in law, Univ. of Cal., 1903-'05; Asst. U. S. Atty., Western Dist. of Wash., 1908-'10; now Asst.

A Greek Letter Society at California

Atty. for Washington of the Great Northern Ry., King Street Station, Seattle ** m. Sept. 6, 1905, to Mary Frances French, d. of the Rev. and Mrs. John French of Oakland.

Affiliated August, 1904.

JOHN FREDERICK STAVER,
754 Schuyler Street, Portland, Oregon.

Mining engineer ** b. Aug. 19, 1883, at Freeport, Ill. ** Samuel Wesley and Lavina (Baer) Staver ** Portland h. s. ** Univ. of Oregon, 1900-'04; Univ. of Cal., 1904-'06; B. S., 1904 (Chem.) B. S., 1906 (Mining) ** At Oregon, man. ed. *Monthly*; treas. student body; pres. Dormitory club; Chemistry club; charter member Gamma Alpha; class track team; at Cal., French club ** General mining business ** m. July 14, 1909, to Myra Lee MacFarlane, d. of Mr. and Mrs. J. B. MacFarlane of Idaho Springs, Colorado.

Initiated January 23, 1905

CARLOS ALFRED NEWBERY,
Buenos Aires, Argentine Republic.

Estanciero and government official ** b. Jan. 20, 1884, at Buenos Aires ** Dr. Ralph and Dolores (Malgarie) Newbery ** Instituto europeo ** Columbia, 1903; Cornell, 1903-'05; Univ. of Cal., 1905-'08; B. S. 1908 ** Alpha Zeta; varsity track team ** Ministry of Agriculture, A. R. ** Home, Moldes, 2368, Buenos Aires.

Beta-Xi of Kappa Sigma

SAMUEL CLARK WELLS,
Martinez, California.

Deputy County Clerk, Contra Costa Co. ** b. Sept. 19, 1884, at Santa Rosa, Cal. ** Phillip and Margaret (Clark) Wells ** Oakland h. s. ** Univ. of Cal., 1904-'06.

Initiated February 8, 1905.

THOMAS EBENEZER STEPHENS,
Club de Residentes Extranjeros, Rosario, A. R.

Salesman ** b. Nov. 18, 1883, at Auburn, Cal. ** Thomas Ebenezer and Adeline (Babcock) Stephens ** Sonora and Auburn h. s. and Mt. Tamalpais milit. academy ** Univ. of Cal., 1905 ** athletic ed. *Daily Californian* ** General business; now sales manager, Compania Singer, Northern Argentina.

Initiated August 28, 1905.

COTESWORTH BRADWAY HEAD,
1637 Walnut Street, Berkeley.

Clerk ** b. Feb. 15, 1886, at Oakland ** Cotesworth Pinkney and Elizabeth Watson (Irish) Head ** Roxbury latin s. and Horton s. ** Univ. of Cal., 1903-'06 ** basketball team; varsity track team; pres. French club; mandolin club; banjo club; dramatics; summer school dance com. ** Spring Valley Water Co., 375 Sutter Street, San Francisco.

A Greek Letter Society at California

HORACIO SANCHEZ-ELIA,

Florida 980, Buenos Aires, Argentine Republic.

Capitalist ** b. May 19, 1885, at Buenos Aires ** Ignacio and Maria (Elia) Sanchez ** Colegio San Jose and Instituto Vertiz ** Cornell, 1905; Univ. of Cal., 1906-'08; B. S. 1908 ** dec. com. sen. ball ** Jockey Club, Buenos Aires.

HOWARD MORTIMER LEGGETT,

Fresno, California.

Insurance ** b. June 17, 1887, at Oroville, Cal. ** James Howard and Mary (McSmith) Leggett ** Oroville h. s. ** Univ. of Cal., 1905-'09 ** Alpha Zeta; varsity track team; track numerals; ed. and man. staffs, 1909 *Blue and Gold*; soph. hop com.; floor mgr. jun. prom; sen. ban. com.; sen. picnic com.; dramatics ** Delegate, National Conclave, Denver, 1908 ** New England Mutual Life Ins. Co., Fresno, California ** m. Sept. 14, 1909, to Gladys Armstrong, d. of Mr. and Mrs. A. B. Armstrong of Los Angeles.

CHARLES ALBERT WARREN, JR.,

1822 Sacramento Street, San Francisco.

Business ** b. Apl. 23, 1885, at San Francisco ** Charles Albert and Ada (Smith) Warren ** Santa Clara college ** Univ. of Cal., 1905-'06 ** Vice-pres., Charles A. Warren Co., Kohl Bldg., San Francisco ** Bohemian Club, University Club, S. F. ** m. Sept. 11, 1907, to Claudine Cotton, d. of Judge and Mrs. A. R. Cotton of San Francisco.

Beta-Xi of Kappa Sigma

OLIVER WATSON FLETTER,
108 Sunnyside Avenue, Oakland.

Salesman ** b. Oct. 23, 1887, at Alameda ** Hon. Free-born Jacob and Sarah (Watson) Fletter ** Boone's academy ** Univ. of Cal., 1905-'06; 1908-'09 ** Parrott and Co., 320 California street, San Francisco ** m. Apl. 10, 1909, to Gladys Church, d. of Mr. and Mrs. R. D. Church of Piedmont, California.

Initiated September 18, 1905.

DAVID DUNCAN OLIPHANT, JR.,
2711 Elmwood Street, Berkeley.

Attorney ** b. Oct. 29, 1886, at Portland, Oregon ** David Duncan and Anna Euphemia (Reamer) Oliphant ** Portland academy and Horton's ** Univ. of Cal., 1905-'07; Hastings College of Law, 1908-'11; LL. B. 1911 ** ass. ed. *Daily Californian*; vice-pres. Daily Californian Pub. Co.; gen. ch. soph. hop ** m. June 1, 1911, to Fay Chapman, d. of Mr. and Mrs. Chapman of Oakland.

Initiated October 23, 1905.

ARTHUR BUTLER SIBLEY,
270 Dolores Street, San Francisco.

Contractor ** b. Nov. 28, 1882, at San Francisco ** Levi Butler and Harriett Belle (Crockett) Sibley ** Hayward and Lowell h. s. ** Univ of Cal., 1904-'06 ** Vice-pres. Sibley Grading and Teaming Co., Builders' Exchange Bldg., San Francisco.

A Greek Letter Society at California

Initiated August 25, 1906.

FRANK BIRCKHEAD REARDON, Bush and Hyde Streets, San Francisco.

Physician and surgeon ** b. Sept. 27, 1889, at Oroville, Cal. ** Dr. Thomas Birckhead and Julia (Holland) Reardon ** Oroville h. s. ** Univ. of Cal., 1906; St. Mary's College, 1907; Cooper Medical College, 1907-'11; M. D. 1911 ** Nu Sigma Nu ** House physician, St. Francis Hospital, San Francisco.

JOHN NELSON HANLON, 9 Plaza Cervantes, Manila, P. I.

Engineer and draftsman ** b. Mar. 3, 1887, at Pennington, N. J. ** Prof. John Russell and Lida (Lillagore) Hanlon ** Pennington seminary; Oroville, Dinuba and Willows h. s. ** Univ. of Cal., 1906-'08; 1910-'11 ** General engineering ** Home, Santa Ynez, California.

MICHAEL CHARLES O'TOOLE, 2119 Berryman Street, Berkeley.

Architect ** b. Feb. 14, 1884, at Berkeley ** Dr. Michael and Louisa (McCormac) O'Toole ** Santa Clara college ** Univ. of Cal., 1906-'09; A. B. 1909 ** ed. staff *Journal Technology* ** Wright, Rushforth and Cahill, 571 California street, San Francisco.

Initiated October 6, 1906.

HAROLD HAVEN COCHRANE (Deceased).

b. Sept. 4, 1886, at La Fayette, Ill. ** Rev. Leonard Gurley and Adarian Cecilia (Tubbs) Cochrane ** Salem, Tacoma and Ontario h. s. ** Pomona College, 1904-'06;

Beta-Xi of Kappa Sigma

Univ. of Cal., 1906-'07 ** While absent on leave Bro. Cochrane contracted pneumonia and died Aug. 28, 1907, at Providence Hospital, Oakland.

STANLEY LYMAN KING, 110 Laurel Avenue, Oakland.

Telephone engineer ** b. June 17, 1887, at Oakland ** Lyman Taylor and Laura (Smith) King ** Oakland h. s. ** Univ. of Cal., 1906-'10; B. S. 1910 ** Pacific Telephone Co., Shreve Bldg., San Francisco.

EDWARD LUIS VIVOT, Santa Fe 899, Buenos Aires, Argentine Republic.

Capitalist and estanciero ** b. Oct. 10, 1886, at Buenos Aires ** Narciso and Enriqueta (Alais) Vivot ** Colegio nacional ** Univ. of Cal., 1906-'09 ** Glee club; De Koven club ** Jockey Club, Buenos Aires.

HAROLD HILTON ROGERS. Pasadena, California.

Draftsman ** b. Jan. 25, 1884, at Oakland ** Solomon Durham and Adelia Catherine (Hilton) Rogers ** Anderson's academy and Centerville h. s. ** Univ. of Cal., 1905; 1906-'07 ** St. John's club.

Initiated October 29, 1906.

WESLEY WILLIAM KERGAN, 216 Lake Shore Boulevard, Oakland.

Student ** b. June 19, 1887, at Detroit, Mich. ** Dr. William Wesley and Kathryn (Clare) Kergan ** Oakland

A Greek Letter Society at California

h. s. ** Univ. of Cal., 1906—. ** B. L. 1910 ** lit. bd., josh dept. and man. staff 1910 *Blue and Gold*; ed. *Pelican*; ed. *Occident*; English club; news ed. *Daily Californian*; floor mgr. soph. inf. dance; arr. com. (press agent) sen. extra.; sen. class chaplain; vice-pres. grad. students; John Marshall law club; reader in history ** Delegate, National Conclave, New York, 1910; Alumnus Advisor, Beta-Xi. 1911—. ** Law clerk, J. S. Lamson, Monadnock Bldg., San Francisco.

Initiated February 2, 1907.

ROBERT HEWITT WILLIAMS,
2522 Ridge Road, Berkeley.

Business ** b. Feb. 20, 1887, at Wales ** David and Anna (Davies) Williams ** Central and Oakland h. s. ** Univ. of Cal., 1905-'07 ** Pelican staff; glee club; De Koven club; budweiser (varsity) quartette ** General business, San Francisco.

Affiliated January, 1907.

MELBOURNE ROY TENNANT,
Denver, Colorado.

Business ** Initiate of Gamma-Gamma Chapter at Colorado School of Mines.

Initiated August 26, 1907.

JOHN WALTER SCHMITZ,
Madera, California.

Farmer and banker ** b. Nov. 28, 1886, at San Francisco ** John William and Mary (Van Leyen) Schmitz **



Beta-Xi of Kappa Sigma

Detroit and Santa Clara colleges ** Santa Clara college, 1903-'07; Univ. of Cal., 1907-'09; A. B. 1907 ** At Santa Clara, football; track team; basketball; asst. stage mgr.; Senate; at Cal., football; De Koven club.

LUCIEN GEORGE MATTHEWS, Hotel Cadillac, New York.

Newspaper reporter ** b. June 25, 1888, at South Bend, Ind. ** Michael Malott and Carrie (Ransdell) Matthews ** South Bend h. s. ** Univ. of Cal., 1907-'08. Home, 1520 Euclid avenue, Berkeley.

Initiated September 16, 1907.

EDMUND PENDLETON LIPSCOMB, San Antonio, Texas.

Student ** b. July 22, 1888, at Luling, Texas ** Wiloughby Williams and Jessie Ophelia (Walker) Lipscomb ** San Antonio academy ** Univ. of Texas, 1904-'07; 1908-'09; Univ. of Cal., 1907-'08; Harvard, 1909—.; A. B. 1909 ** At Texas, sub. guard football team; Athenaeum lit. soc.; ed. *Texan*.

Initiated January 27, 1908.

BRYAN RAYMOND DYER, 1423 Spruce Street, Berkeley.

Student ** b. July 8, 1889, at Cheyenne, Wyoming ** Hon. Timothy and Catherine (Callen) Dyer ** Lick and Berkeley h. s. and Boone's academy ** Univ. of Cal., 1908-'11 ** Newman club.

A Greek Letter Society at California

GEORGE FRANCIS BRAUN.

Business ** b. , , at ** Francis
Ami and () Braun ** St. Matthews
Milt. academy ** Univ. of Cal., 1908 ** m. ———

Initiated February 8, 1908.

IRVING WRIGHT BENTON, 311 Congress Place, Pasadena.

Business ** b. July 26, 1888, at Jacksonville, Fla. **
George Williams and Lutie (Wright) Benton ** Throop
s., St. John's and Boone's academy ** Univ. of Cal.,
1908-'10 ** Mgr. W. A. Gripton Co., office fittings, 24
Mercantile Place, Pasadena.

THOMAS BOARMAN SMITH, 742 Castro Street, San Francisco.

Insurance ** b. Dec. 20, 1886, at Jackson, Cal. ** Thom-
as Northeys and Edith (Boarman) Smith ** Lowell and
Polytechnic h. s. ** Univ. of Cal., 1908-'10 ** sergt. univ.
cadets; varsity track team; big "C" ** Royal Indemnity
Co., Royal Ins. Bldg., San Francisco ** m. Feb. 25, 1911,
to Muriel Catherine Turner, d. of Mr. and Mrs. H. H.
Turner of Modesto, California.

Initiated March 23, 1908.

GEORGE BYRON FIELDS, 2112 D Street, Sacramento.

Clerk ** b. Dec. 9, 1887, at Sacramento ** John Joseph
and Martha Ellen (Phillips) Fields ** Sacramento h. s. **
Univ. of Cal., 1906-'08; 1909 ** band; De Koven club;
glee club; budweiser (varsity) quartette ** General busi-
ness.

Beta-Xi of Kappa Sigma

Affiliated August, 1907.

WILLIAM CONSTANTINE BELL, Richmond, Virginia.

Electrical engineer ** b. May 9, 1890, at San Antonio, Texas ** Thaddeus Copes and Katherine Kerr (Carothers) Bell ** Dallas h. s. and Austin academy ** Univ. of Texas, 1906-'07; Univ. of Cal., 1907-'10; B. S. 1910 ** At Texas, asst. ed. *Texan*; man. fresh. track team; At Cal., honor student, College of Mechanics ** Va. Ry. and Power Co., Richmond ** m. June 5, 1911, to Mildred Elizabeth Cross, d. of Mr. and Mrs. F. G. Cross of Corcoran, California.

Initiated September 12, 1908.

AMOS WILLIAM ELLIOTT, 1223 Adeline Street, Oakland.

Student ** b. Nov. 9, 1888, at Santa Cruz, Cal. ** Robert James and Margaret (O'Brien) Elliott ** Santa Cruz and Oakland h. s. ** Univ. of Cal., 1908— ** capt. varsity football team; big "C"; football numerals; international club; ed. staff 1912 *Blue and Gold*; all Amer. rugby team; Winged Helmet; Golden Bear.

ROBERT HAZELTINE CLARK, 1418 Myrtle Street, Oakland.

Student ** b. June 25, 1889, at Los Angeles, Cal. ** Frederick H. and Anna L. (Hazeltine) Clark ** Oakland h. s. ** Univ. of Cal., 1908— ** ed. 1912 *Blue and Gold*; ass. ed. *Daily Californian*; ed. staff *Occident*; Winged Helmet.

A Greek Letter Society at California

RAFAEL LEOPOLD VIVOT,
Santa Fe 899, Buenos Aires, Argentine Republic.

Student ** b. at ** Narciso and Enri-
queta (Alais) Vivot ** Colegio nacional ** Univ. of Cal.,
1908-'09.

Initiated October 9, 1908.

JOHN FRANKLIN HALE,
Marysville, California.

Student ** b. Nov. 19, 1889, at San Francisco ** John
and California Elisabeth (Abbott) Hale ** Marysville h.
s. ** Univ. of Cal., 1908— ** fresh. track team; varsity
track team; big "C"; big "C" com.; member California
team at western colleges conference meet, 1911.

MARSHALL GOULD WILLIAMSON,
1631 Oak Street, San Francisco.

Student ** b. June 24, 1889, at San Francisco ** Dr.
John Marshall and Lucy Lora (Gould) Williamson **
Lowell h. s. and Trinity s. ** Univ. of Cal., 1908— **
~~Alpha Kappa Kappa.~~ *Beta Kappa alpha,*

Initiated January 30, 1909.

LOUIS JOHN PFAU, JR.,
121 Vine Street, San Jose.

Farmer ** b. Oct. 14, 1886, at San Francisco ** Louis
John and Bertha (Nickels) Pfau ** San Jose and Santa
Clara h. s. ** Univ. of Cal., 1908-'11 ** Mandolin club;
International club; ed. staff 1912 *Blue and Gold*; ch. soph.
smoker com.

Beta-Xi of Kappa Sigma

EUGENE JAMES SEADLER,
825 Tenth Street, Sacramento.

Draftsman ** b. Nov. 2, 1888, at Sacramento ** James and Alice (Willis) Seadler ** Lowell, Oakland and Sacramento h. s. ** Univ. of Cal., 1908 ** Seadler and Hoen, architects, Gerber Bldg., Sacramento.

Initiated August 21, 1909.

VALLY PERCIVAL BRUN,
Kings City, California.

Student ** b. July 20, 1889, at San Jose, Cal. ** Samuel J. and Hanna Wood (Otis) Brun ** Santa Clara h. s. ** Univ. of Cal., 1909-'11 ** freshman football team. Home, 1467 Willard street, San Francisco.

CHARLES NEWCOMB MUNGER,
London, England.

Student ** b. Feb. 11, 1887, at Malvern, Iowa ** James Knox Polk and Julia Ada (Newcomb) Munger ** Berkeley h. s. and Univ. of Pacific academy ** Univ. of Cal., 1909; Imperial College of Science and Technology, 1910— ** Imperial College, Imperial Institute Road, South Kensington, London ** Home, Willows and Delmas avenues, San Jose.

JOHN FREDERICK MILLER,
1125 O Street, Sacramento.

Business ** b. Apl. 23, 1891, at Sacramento ** John and Barbara (Snyder) Miller ** Sacramento h. s. ** Univ. of Cal., 1909-'10 ** Miller and Skelton, Sacramento.

A Greek Letter Society at California

Initiated September 3, 1909.

FORREST ALBERT PLANT,
Davis, California.

Student ** b. Nov. 10, 1889, at Davis ** Albert June and Mary Ellen (Borchers) Plant ** Sacramento h. s. ** Univ. of Cal., 1909— ** pres. Newman club; ed. staff 1913 *Blue and Gold*; dramatics; Senate; Glee club.

ROWLAND LEE CHAMBERLAIN,
Auburn, California.

Student ** b. July 10, 1888, at Auburn ** L. L. and Sarah (Gassner) Chamberlain ** Placer county h. s. ** Univ. of Cal., 1909—.

RICHARD WHITNEY RUST,
2626 Regent Street, Berkeley.

Student ** b. Dec. 3, 1889, at San Francisco ** Judge Richard Church and Elizabeth (Hosmer) Rust ** Ione h. s. ** Univ. of Cal., 1909— ** man. 1913 *Blue and Gold*.

Initiated October 4, 1909.

FRANKLIN WATSON DOZIER,
Hotel Del Rey, Corona, Riverside County, California.

Business ** b. Jan. 13, 1891, at San Francisco ** Thomas Bona and Maud (Watson) Dozier ** Shasta county h. s. and Santa Clara college ** Univ. of Cal., 1909-'10 ** Citrus fruit business.

Initiated January 22, 1910.

STIRLING BENJAMIN PEART,
2100 Bush Street, San Francisco.

Student ** b. Dec. 25, 1890, at Woodland, Cal. ** Benjamin and Elizabeth Sophia (Fiske) Peart ** Lowell and Woodland h. s. ** Univ. of Cal., 1909— ** football

Beta-Xi of Kappa Sigma

numerals ; track numerals ; varsity football team ; big "C" ; glee club ; Winged Helmet.

BURTON BYRON BRACE, Hotel Metropole, Oakland.

Student ** b. May 28, 1890, at Los Gatos, Cal. ** John Wilcox and Mary Alice (Starr) Brace ** Oakland h. s. and Boone's academy ** Univ. of Cal., 1910 ; Stanford, 1910-'11 ; Hastings College of Law, 1911—.

Initiated February 12, 1910.

JOHN RAYMOND FLYNN. 214 Shrader Street, San Francisco.

Business ** b. July 19, 1890, at St. Joseph, Mo. ** William James and Anne Louise (McNeely) Flynn ** Lowell h. s. ** Univ. of Cal., 1910 ** Curtis Art Co., Van Ness and Sacramento, San Francisco.

FRANKLIN HOWE DYER, 1440 Franklin Avenue, Denver, Colorado.

Student ** b. Aug. 12, 1887, at Brooklyn, N. Y. ** Charles and Attie C. (Howe) Dyer ** St. John's military s. ** Polytechnic College of Engineering, 1907-'09 ; Univ. of Cal., 1909— ** At Polytechnic, pres. athletic association ; ed. 1909 *The Engineer* ; At Cal., soph. inf. com. ; ch. soph. smoker com. ; soph. hop. com. ; 1913 class yell leader ; man. staff, 1913 *Blue and Gold*.

Initiated September 3, 1910.

SHELDON ARTHUR ALLEN, 2008 Cedar Street, Berkeley.

Student ** b. June 1, 1889, at Santa Clara, Cal. ** Shel-

A Greek Letter Society at California

don and Susan (Tuttle) Allen ** Santa Clara h. s. ** Univ. of Cal., 1908; 1910— ** varsity track team; varsity football (second) team; glee club.

EDWARD PAUL DENNY, Etna Mills, California.

Student ** b. Oct. 6, 1892, at Etna Mills ** Albert Hindwikson and Gertrude Athele (Caldwell) Denny ** Etna h. s. ** Univ. of Cal., 1910-'11.

GEORGE BYRAM MARSDEN, Burns, Oregon.

Student ** b. July 14, 1892, at Burns ** Dr. Walter Lafarest and Clara Adelaide (Byram) Marsden ** Burns h. s. ** Univ. of Cal., 1910—.

GLENN FRANKLIN ENGLE, Auburn, California.

Student ** b. July 6, 1892, at Orleans, Ind. ** Dr. John Franklin and Mary (Fisher) Engle ** Placer h. s. ** Univ. of Cal., 1910.

EDWIN WILLIAM CARLIN, Marysville, California.

Student ** b. Apl. 27, 1892, at Marysville ** William H. and May (Blakesley) Carlin ** Marysville h. s. ** Univ. of Cal., 1910.

Initiated September 17, 1910.

COYLE CLAY TURNER, Lyonsville, California.

Lumber salesman ** b. Dec. 13, 1889, at Red Bluff ** John Calvin and Alice Ernestine () Turner ** Red

Beta-Xi of Kappa Sigma

Bluff h. s. ** Univ. of Pacific, 1909-'10; Univ. of Cal., 1910 ** Home, Red Bluff, California.

RONALD THOMAS STRONG,

209 South Sixteenth Street, Portland, Oregon.

Student ** b. Aug. 18, 1892, at Portland ** Thomas Nelson and Mary Elisabeth (Stone) Strong ** Portland academy ** Univ. of Cal., 1910—.

JAMES HARRY McCORMACK,

603 North M Street, Tacoma, Washington.

Student ** b. Nov. 14, 1889, at Tacoma ** James and Elizabeth (White) McCormack ** Tacoma h. s. ** Univ. of Cal., 1909—.

Initiated October 12, 1910.

WILLIAM MORRELL HALE,

1345 Arch Street, Berkeley.

Student ** b. June 27, 1893, at Martinez, Cal. ** William Alanson and Jennie (Ipswitch) Hale ** Alhambra union h. s. ** Univ. of Cal., 1910—. ** Football numerals.

Initiated January 28, 1911.

FLOYD FRANK HOWARD,

2545 Hillegass Avenue, Berkeley.

Student ** b. Nov. 27, 1890, at Medford, Ore. ** George Washington and Georgia Ann (Lamb) Howard ** Berkeley h. s. and White's s. ** Univ. of Cal., 1911—.

THOMAS BALFOUR MACKIE DUNN,

2522 Ridge Road, Berkeley.

Student ** b. May 5, 1886, at Ventura, Cal. ** Robert

A Greek Letter Society at California

and Margaret (Mackine) Dunn ** Santa Cruz h. s. **
Univ. of Cal., 1907-'08; 1910—.

THOMAS COMFORT HAVEN,
3833 Telegraph Avenue, Oakland.

Student ** b. Apl. 15, 1891, at Oakland ** Charles Edward and Annie (Burk) Haven ** Santa Rosa h. s. **
Univ. of Cal., 1909-'11 ** man. staff *Daily Californian*;
soph. smoker com.; soph. auditing com.

LEO WILLIAM MEYER,
1190 Eddy Street, San Francisco.

Student ** b. Sept. 28, 1890, at Fresno, Cal. ** Herman and Eda (Eggers) Meyer ** Polytechnic and Lowell h. s. **
Univ. of Cal., 1911— ** varsity track team; fresh. track team; track numerals; big "C."

Initiated February 20, 1911.

FRANK BRADEN ARMSTRONG,
Woodland, California.

Student ** b. Sept. 23, 1888, at Woodland ** George Gardner and Mary (Jeans) Armstrong ** Oakland and Woodland h. s. and Boone's academy ** Univ. of Cal., 1910—.

Affiliated August, 1910.

HAROLD EDWARDS BATES (Gamma-Alpha).
Forest Grove, Oregon.

Student ** b. Mar. 28, 1889, at Portland, Ore. ** Henry Liberty and Cora (Nichols) Bates ** Portland academy ** Princeton, 1906-'07; Univ. of Pacific, 1907-'08; Univ. of Oregon, 1908-'10; Univ. of Cal., 1910-'11; A. B. 1910 ** Instructor in zoology at Cal.

JUL 3 1913

LIBRARY OF CONGRESS



0 020 150 812 5