

Historic, archived document

Do not assume content reflects current scientific knowledge, policies, or practices.

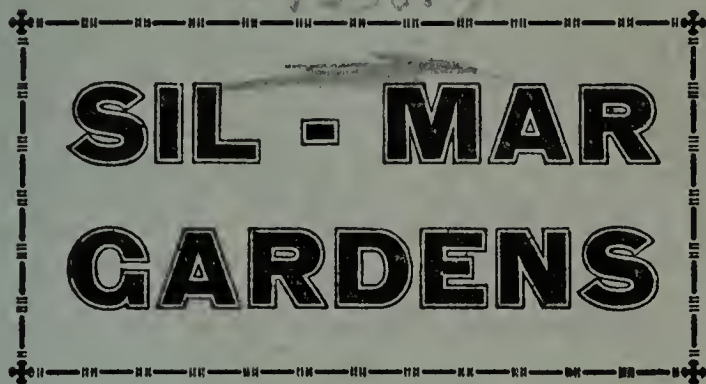
MAY 27 1935

62.71

IRIS

WE GROW OVER 700 VARIETIES

51236.3



SIL - MAR GARDENS

BARGAINS

LISTS

COLLECTIONS

SELECTIONS

LARGEST COLLECTION IN THE WEST

OLD AND NEW

MODERN NOVELTIES

RECENT INTRODUCTIONS

LIBRARY
RECORDED



U. S. Department of Agriculture

SIL-MAR GARDENS

SILVERTON, OREGON

MEMBER

- American Iris Society*
- American Peony Society*
- Willamette Valley Nursery Club*
- Western Nut Growers Association*
- Oregon State Horticultural Society*

LOCATION

Sil-Mar Gardens is located 3 miles northeast of Silverton at the first four corners on the pavement known as the Cascade Highway leading to Molalla, Scotts Mills and other points.

3 FOR 2

In nearly all cases we will supply you with three roots for the price of two. When we are unable to do this we will refund money for second rhizome.

AN IRIS FOR EVERY NAME

As a special premium offer to build up our mailing list we will give for each name of an iris lover, who grows at least five varieties of tall bearded iris in his or her garden, fifteen cents worth of iris of your selection, providing that they are not listed in the American Iris Society membership list or do not receive our catalog.

OREGON GROWN

Oregon grown rhizomes from a temperate climate for both northern and southern plantings.

YOUR CHOICE

Do not fail to look over collections and selections listed later.

POSTAGE PAID

Postage paid on all orders amounting to \$2.50 or over. On all orders less than \$2.50 send 35 cents extra for postage and packing, east of the Missouri River; 25 cents extra in the west.

DELIVERY

Iris will be dug and shipped in August and September. At other times only upon special request.

TERMS

Cash with order as we do not like to send C. O. D. or collect.

NO SUBSTITUTION

We do not substitute except on request. We shall return your money, if we are unable to supply your wants.

ORDER EARLY

The demand for certain good and well advertised varieties may exhaust our supply rapidly.

MONEY REFUNDED

If roots are unsatisfactory upon arrival, please return. Roots are guaranteed true to name and satisfactory adjustment will be made if they prove untrue.

REFERENCES

R. G. DUN & CO.

COOLIDGE & McCLAIN BANK, Silverton, Ore.
BANK OF SCOTTS MILLS, Scotts Mills, Ore.

WHOLESALE

Write us for special quotations for iris in hundred lots.

RATINGS

The 1927 ratings of the American Iris Society are given where available. The exhibition rating is given first, garden rating next. One number only is the 1922 garden and exhibition rating. The year signifies that such varieties have not yet been rated and are usually scarce, not well distributed or recently introduced, having been introduced in the year given.

Rating Guide

95	almost perfect
90	very fine
85	fine
80	very good
70	good
60	fair
50	poor

IRIS

79	81	Abenda	s. rose f. cherry red	40c
83	82	Afterglow	greyish lavender	20c
76	76	Albert Victor	light violet	15c
86	87	Alcazar	s. violet f. purple	20c
74	75	Amas	s. blue f. violet	20c
92	91	Ambassadeur	s. bronze f. maroon	30c
80	77	Anna Farr	white feathered blue	20c
1922		Anne Bullen	blue bicolor	50c
75	74	Anne Leslie	s. white f. purple	20c
86	85	Ann Page	pale lavender blue	75c
80	75	Anosia	s. rich brown f. golden red	40c
81	81	Antonio	s. lavender f. pansy	50c
81	88	Aphrodite	tall, bright lilac pink	2.00
1907		Arac	bright bluish violet	30c
73	73	Aragon	A bright bicolor	35c
79	81	Archeveque	purple	15c
1923		Argentina	tall, white	50c

73	75	Argonaut	pale lavender violet	20c
84	83	Argynnis	s. yellow f. dark crimson	40c
81	76	Ariadine	silvery bright blue	40c
		Ariadne	see Ariadine	
		Arlequin	a richer Iris King	35c
76	78	Arnols	brownish purple	15c
78	79	Arsace	greyish white	20c
92	88	Asia	s. silver f. red blend	85c
76	83	Athene	waxy white	20c
63	67	Atlas	bradleys violet	15c
54		Attraction,	lavender violet	15c
73	77	Aurea	yellow	20c
77	79	Aurora	mauve	25c
72	73	Autocrat	s. blue f. dark blue	25c
74	77	Autumn King	blue purple	50c
86	81	Avalon	light lustrous mauve	1.00
77	74	Azure	lavander blue and purple	15c
72	74	Azure Glow	veined violet self	20c
76	75	Balaruc	white	30c
83	82	Balboa	red violet bicolor	50c
90	89	Ballerine	light blue toned	35c
78	78	Baronet	blue	20c
76	76	Barrelane	lavender self	20c
76	79	Barton Harrington	yellow and red	15c
68		Belcolor	ivory toned	15c
84	83	Belisaire	s. light faun f. madder red	2.00
66	71	Bellandonna	white bordered blue	15c
76	78	Benbow	dark bluish violet	20c
89	87	Bertrand	large velvety dominion	3.50
78	72	Black Prince	dark purple	35c
74	74	Blue Bird	blue	15c
76		Blue Boy	early blue purple	15c
69	71	Blue Jay	light and dark violet	15c
74	77	Bluet	blue tone	15c
92	75	Blue Lagoon	light dull blue lavender	20c
74	78	Boyer	s. wine f. dark red purple	30c
81	82	Brandywine	silvery azure blue	25c
1924		Brilliant	red toned	35c
91	90	Bruno	velvety bronze heliotrope	3.00
84	80	B Y. Morrison	violet and purple	20c
77	80	Camelot	white edged violet	15c
96	91	Candlelight	pink lavender	2.00
84	83	Canopus	purple blend dominion	75c
67	74	CA Pfeiffer	s. mauve f. dark violet	15c
75	78	Caporal	chinese violet	15c
71	72	Caprice	red toned	20c
83	82	Carmelo	light hyssop violet	40c
70	72	Carmencita	s. lilac f. crimson	15c
81	80	Carthusian	rich dark red purple	20c
82	82	Cassandra Perry	rosy violet and red	40c
84	83	Caterina	lavender blue and lilac	20c
72	77	Cavalier	s. blue f. purple	20c
79	81	Cecil Minturn	catalyea rose	25c

68	68	Cengialti	medium blue self	15c
66	72	Celeste	pale verbina violet	15c
34	82	Chalice	exquisite lemon yellow	35c
1923		Charmian	blue lavender	35c
82	85	Chasseur s.	yellow f. yellow and red	90c
68		Cherubin	pale hortense violet	15c
69		Chester J. Hunt	s. blue f. marine	15c
77	81	Chlorinda	yellow marked red	60c
67	72	Circe	s. hyssop violet f. black violet	20c
85	85	Citronella	yellow marked red	1.00
69	70	Clematis	pale violet	15c
80	80	Cluny	s. lilac f. dark lavender	20c
76	78	Col. Candelot	s. bronze f. maroon	15c
1928		Conchita		pale bronze falls marked red	1.25
1928		Colusa	petunia violet	1.50
69	70	Cordelia	violet and amparo purple	15c
69	75	Cordon Bleu	blue toned	15c
82	84	Corrida	sky blue self	15c
70	81	C P Connell	lavander purple	20c
73	78	Cretan	earlydeep violet purple	30c
75	76	Cretonne	s. bronze f. red maroon	15c
85	83	Crimson Glow	deep crimson rose	1.50
86	83	Crimson King	cotinga purple self	15c
85	85	Crusader	s. bluish f. dark bluish	25c
50	66	Cymbaline	early light blue lavender	35c
76	79	Dalila	s. white f. red purple	15c
72	74	Dalmarius	gray and mauve	20c
83	82	Dalmatica	light lavender	20c
81	82	Damozel	white edged red lavender	25c
68	72	Daniel Leseur	mauve and violet	15c
80	81	Daphne	s. white f. purple	30c
71	75	Dawn	sulpher yellow	20c
69		Demi-Deuil	veined mauve	15c
63	80	Deucalion	s. apricot f. crimson purple	25c
70	70	Diadem	lilac rose and red mauve	15c
1923		Dianto	red toned	20c
78	78	Dimity	dimity white	15c
1927		Don Quixote	yellow violet blend	1.50
93	91	Dolly Madison		a glorified Quaker Lady	9.00
76	78	Dora Longdon		s. honey yellow f. magenta	20
		Deuil de Valery Mayet		see Valery Mayet	
72	72	Dr. Andrist	empire yellow & bordeaux	15c
64	73	Dr Bernice	light brown and lake	15c
77	79	Drake	light hyssop violet	15c
84	84	Dream	light pink	15c
75	77	Du Gueslin	s. coppery f. violet	25c
1923		Duke of York	soft mauve	40c
77	79	Eckesachs	s. lavender f. violet	15c
73	83	Eclairer	lilac and lavender	50c
77	81	E C. Shaw	claret	20c
81	76	Edith Cavell	white	75c
78	81	Edouard Michel	deep red violet	20c
80	77	Eglamour	purple bicolor	65c

82	81	E H Jenkins	bluish purple	20c
80	81	Elberon	bright red toned	50c
70	71	E L Crandall	s. white f. blue	15c
75	76	Eldorado	bronze blend	15c
83	86	Esplendido	red purple	65c
1923		Estrallon	s. white blended f. red purple		1.50
76	78	Fairy	white and soft blue	15c
76	74	Fenella	white	15c
1923		Fenton	lavender blue	60c
70	81	Feronia	rosy bronze and rose	20c
1920		Firmament	light blue bicolor	15c
80	80	Flammenschwert	yellow and brown	40c
70	73	Flavescens	light yellow	15c
76	75	Florentina	early white	15c
69	74	Florintina	blue early purple	15c
80	84	Folkwangs. rose white f. claret red		50c
68	77	Franklin Beynon	light pink lavender	20c
75	79	Fro	yellow and bordeaux	20c
76	76	Freyer's Glory	s. bronze f. maroon	20c
73	60	Fuerstin Lonyay	crinkled pink wine	20c
67		Gajus	s. yellow f. crimson	15c
82	82	Gaviota	white edged yellow	40c
90	88	Geo. J. Tribolet	s. nigrosin f. blackish		2.00
83	85	George Yeld	s. apricot f. wine	1.00
81	83	Georgia	nice pink	20c
69	74	Germanica	early blue	15c
91	90	Germaine Perthuis	velvety purple	2.50
65		Gertrude	light blue	15c
87	86	Glowing Embers	brown & dark purple		2.00
78	82	Gnome	early ruby claret	20c
75	76	Gold Crest	bright violet blue	20c
86	87	Gold Imperial	chrome yellow	1.25
78	78	Grevin	violet and violet purple	20c
69	66	Gules	pale lilac	15c
83	81	Halo	s. violet f. blue violet	25c
79	82	Harmony	satiny purple blue	75c
77	77	Harpalion	lavender	35c
55		Harriet	white feathered blue	15c
82	83	Harriet Presby	fragrant pink	45c
72	77	Hautefeuille	hyacinth & flourite violet		15c
72	69	Helene Koehler	pink, falls veined	50c
1915		Helio	light blue bicolor	20c
70	74	Her Majesty	rosy pink	15c
66	66	Hilda	white marked violet	15c
90	80	Hippolyta	mauve	60c
		old Homer	blue	15c
40		Honorabiles. chrome f. veined russet		15c
83	84	Imperator	improved Seminole	75c
75	76	Inca	red toned yellow bicolor	20c
1922		Ingres	deep pink lavender	25c
71	71	Innocenza	white	15c
80	80	Iris King	yellow and mauve	20c
77	83	Isis	light hyssop violet	20c

83	84	Isolene	pink and purple	20c
76	75	Ivanhoe	pale lavender blue	15c
82	83	Jacquiline Guillot	soft violet	1.25
75	78	Jacquisiana	copper and maroon	15c
68	66	Japanesque	pleroma violet	15c
1923		J C Weld	s. rose purple f. red plum	30c
83	81	Jean Chevreau	speckled brown	1.25
73	71	Jeanne D'Arc	frilled white	15c
80	71	Jennett Dean	soft iridescent lavender	35c
73	76	J J Dean	large rich blue and purple	35c
85	84	Jubilee s.	yellow f. cream marked red	1.50
85	84	Julia Marlowe	pink and red	1.75
1928		Juliet	lavender purple	20c
78	81	Juniata	clear blue	20c
80	77	Kalos	white flushed and peppered	50c
1924		Karen	red violet bicolor	35c
86	81	Kashmir White	waxy white	35c
76	73	Kathryn Freyer	s. violet f. maroon	15c
65		Kathleen	pinkish purple	15c
72	74	Kharput	s. violet f. purple	20c
67		Khediye	violet	20c
85	83	King Karl s.	dotted apricot and ivory	1.50
74	76	Knysna	s. yellow f. brown	20c
75	80	Kochii	deep purple	20c
80	83	Lady Bing	clear pale lavender	40c
85	82	Lady Foster	blue and violet	35c
1925		Lady Lillian	light pink lavender	50c
78	78	La Neige	white	20c
1928		La Paloma	light blue lavender	25c
71	79	Lavengro	deep red purple	25c
85	83	Le Grande Ferre s.	grey fawn f. rose	1.50
88	88	Lent A Williamson	violet and purple	15c
69	70	Leonidas	hyssop violet	15c
86	82	Leverrier	tall light lilac	50c
69	69	Lewis Trowbridge	violet	20c
76	79	Lohengrin	cattleya rose	20c
84	85	Lord Lamborne	s. fawn f. crimson	1.25
88	78	Lord of June	lavender blue	25c
73	78	Loreley	yellow and marine	15c
85	81	Louis Bel	velvety blackish purple	2.50
76	79	Lulworth	blue violet	35c
1925		Lustre	deep red purple	1.25
77	76	Lycaena	s. white f. rich purple	40c
80	80	Mady Carriere	greyish lavender	25c
87	85	Magnifica	violet and red violet	35c
88	87	Majestic	large dominion	1.25
77		Major	dark yellow bicolor	20c
78	80	Ma Mie	white	15c
69	72	Mandralisca	blue	15c
61		Maori King	s. yellow chrome f. brown	15c
64	65	Margaret Moor	reddish lilac	15c
1921		Marion Cran	dark pink	35c
75	75	Mariposa	blue flaked purple	25c

82	81	Marsh Marigold yellow and brown	25c
82	72	Mary Garden dotted maroon	15c
84	85	Mary Gibson rosy bronze	1.00
65	67	Mary Gray light blue	15c
81	81	Mary Orth dull violet	25c
79	80	Mary Williamsons. white f. hyacinth	35c
72	72	Mauvine mauve	20c
81	78	May Morn yellow flushed mauve	25c
72	73	May Rose rose pink	20c
84	87	Medrano smoky red	25c
77	77	Mercedes white plicata	20c
79	77	Merlin mauve and purple	20c
78	77	M. Hubert violet and blue	35c
81	80	Midwest dotted purple	35c
86	87	Mildred Presby s. white f. violet	65c
80	80	Milky Way white	65c
79	77	Miranda early violet	25c
77	74	Mistress Ford red purple bicolor	50c
74	74	Mithras yellow and red purple	20c
88	84	Mlle. Schwartz pale mauve	30c
85	86	Mme. Abel Chantenay	rose ash & rose	1.00
73	73	Mme. Bouillet dotted mauve	20c
69	70	Mme. Chereau white frilled blue	20c
84	83	Mme. Cheri violet pink	25c
81	83	Mme. Chobaut buff and wine	15c
74	76	Mme. de Sevigne white marked	15c
92	89	Mme. Durrandbuff and light violet	1.50
91	88	Mme. Gaudichau red purple	30c
86	85	Mme. Henri Cayeaux	smoky red violet	2.00
74	77	Monsignor mauve	20c
78	78	Montezuma dotted brown	20c
69	74	Moonstone pale blue	25c
91	91	Morning Splendour red purple	1.00
84	84	Mother of Pearl pearl	15c
72	79	Mount Penn rose and lilac	20c
71	74	Mrs. Alan Gray mauve and violet	20c
68		Mme. Blanche Pion yellow bicolor	15c
81	79	Mrs. Charles Pearson soft mauve	40c
75	75	Mrs. Cowley copper and purple	15c
1923		Mrs. Cuthbertson apricot and rose	75c
69	77	Mrs. Fryer mauve and black purple	15c
77	80	Mrs. Hetty Matson	bronzy & reddish	90c
80	83	Mrs. H F Bowles brown and brick	50c
63	70	Mrs. Horace Darwin white	20c
79	79	Mrs. Marion Cran fine pink tone	2.00
67	69	Mrs. Neubronner golden yellow	15c
78	81	Mrs. Finley pleroma violet	20c
75	78	Mrs. Walter Brewster lavender blue	25c
1925		Muscadin Cayeuxcanary & claret	1.00
77	79	Muzeris apricot and rose crimson	35c
78	81	Nancy Orne lilac and argyle purple	25c
69	71	Navajo bronze and maroon	20c
70	65	Nibelungen buff and petunia violet	15c

86	82	Nimbus	lobelia violet & black purple	50c
77	79	Nine Wells violet and purple	15c
72	74	Nirvana buff and violet	25c
63		Nuee d'Orange lavender drab	15c
83	82	Ochracea gold	25c
90	82	Odaroloc mauve violet self	1.50
76	78	Oliver Perthuis dauphin blue	35c
80	83	Olympuss. bronze rose f. crimson	90c
74	77	Onnoris massicot yellow	20c
82	83	Opera wine red	20c
82	73	Ophir Gold yellow	85c
74	75	Oporto pansy violet	20c
76	77	Oriflamme blue and purple	15c
82	84	Palemon buff	40c
83	82	Pallida Dalmaticalight lavender	20c
1928		Paloma light blue lavender	25c
77	80	Parc de Nully dark purple	15c
74	74	Parisiana white edged lilac	15c
76	74	Patrician dark blue bicolor	50c
66	66	Paxatawny parma violet with yellow	20c
69	79	Perfection blue and dark violet	20c
77	82	Perladonna blue	40c
71	75	Perry's Favorite pansy violet	20c
78	84	Phyllis Bliss rose lavender	20c
89	90	Pioneer red purple	2.00
79	77	Pocahontas white edged blue	15c
70	78	Polaris bright violet self	75c
79	77	Pont-a-Moussons. bluff f. violet	20c
72	74	Powhatan red violet	15c
86	84	Prairie Gold deep yellow	2.00
73	81	Prince Lohengrinlight pink lavender	25c
90	90	Princess Beatrice light lavender	20c
81	80	Princess Osra white edged violet	90c
74	74	Princess Viktoria Louise	yellow & blue	15c
78	78	Princess Royal mauve	20c
72	72	Princess Toto white feathered pink	20c
77	78	Priscilla s. violet f. purple	35c
77	76	Prosperity lilac and violet	25c
77	77	Prof. Seeliger wine red	20c
83	84	Prosper Laugier bronze and ruby	15c
81	82	Prospero large lavender and purple	20c
67	74	Purple King dark blue	15c
72	75	Quaker Lady smoky lavender	15c
88	88	Queen Catherina pale violet	20c
71	74	Queen of May pink	15c
73	73	Rachel Fox olive buff	20c
74	74	Raffet dark blue	25c
1924		Ramonapetunia violet blended buff	25c
75	75	Red Cloud bronze and maroon	15c
74	74	Red Riding Hood red tone	25c
79	79	Regan violet blue bicolor	35c
84	80	Rene Cayeux	s. white f. crimson violet	2.50
83	82	Reverie s. buff f. deep red	2.00

83	87	Rheingauperl	soft orchid pink	1.25
82	83	Rheinnixe	s. white f. blue	15c
76	79	Rheintraube	deep blue purple	30c
76	73	Richard II	white and prune purple	35c
61	65	Ringdove	pale violet	20c
76	77	Rodney	dauphin violet self	15c
68	68	Romeo	s. citron yellow f. lilac violet	15c
80	84	Rosalba	vinaceous mauve	35c
69	72	Rosalind	pink mauve	15c
1923		Rosedale	lobelia blue	35c
82	83	Rose Madder	rose madder	70c
68	71	Rose Salterne	white edged violet	35c
74	78	Roseway	red pink	15c
63	69	Rose Unique	violet rose	25c
78	78	Roturca	aniline lilac	40c
78	83	Rubyd	nigrosin violet	35c
77	75	Ruby Perry	dark rose	50c
75	79	Ruby Queen	ruby	25c
75	79	Rugajo	red marked darked	20c
79	76	Safrano	soft yellow	50c
77	78	Salonique	s. white f. velvety violet	25c
85	84	San Gabriel	large pink lavender	1.50
44		Sans Souci	s. chrome f. veined brown	15c
78	77	Sarpedon	hyacinth violet	20c
67	66	Sea Gull	gray flushed mauve	15c
83	83	Seminole	red violet and crimson	30c
1928		Senorita	s. yellow lavender f. lilac	1.50
84	84	Shekinah	lemon chrome	20c
77	76	Sherwin-Wright	golden yellow	20c
81	81	Silverado	silvery blend	45c
74	82	Silver Mist	bluish lavender	45c
1921		Simplicity	light pink lavender	30c
81	80	Sindjka	smoky lavender	25c
81	92	Solebad	early yellow	25c
91	88	Souv. de Mme. Gaudichau	rich purple	30c
78	78	Splendour	reddish bicolor	35c
85	84	Simone Vaissiere	azure and aniline	65c
1919		Stanley H White	empire yellow	35c
82	82	Steepway	pink blend	35c
63		Stormcloud	lavender drab	15c
83	82	Sunset	gold	25c
85	86	Susan Bliss	fine lilac pink	45c
82	82	Suzanne Autissier	blue violet	50c
77	76	Swatara	lobelia blue and violet	15c
85	87	Sweet Lavender	french grey	35c
75	75	Syphax	violet and crimson	20c
68	74	Tamar	reddish lilac	20c
62	75	Tansy	yellow	25c
		Tectorum	lilac blue and white crest	25c
88	88	Tenebrae	blue and pansy violet	1.00
75	76	The Inca	red toned yellow bicolor	20c
64	67	Thelma Perry	mauve and argyle purple	20c
68		Thorbecke	s. white f. prune purple	20c

JOIN THE AMERICAN IRIS SOCIETY

\$3.00 A YEAR

Four Bulletins each year. Checks
payable to the American Iris
Society should be sent
to the

SCIENCE PRESS PRINTING CO.,

Lancaster, Pa.

JOIN THE AMERICAN IRIS SOCIETY

\$3.00 A YEAR

Four Bulletins each year. Checks
payable to the American Iris
Society should be sent
to the

SCIENCE PRESS PRINTING CO.,

Lancaster, Pa.

77	78	Thunder Cloud	lavender	25c
84	82	Titan	violet purple	dominion 1.00
75	70	Titus	early reddish pink	25c
67	83	Toreador	orange and red	20c
58	57	Tregastel	red violet blend	20c
73	74	Trianon	pale pinkish buff	20c
75	75	Tristram	white and blackish purple	20c
84	82	Troades s.	rosy buff f. velvety maroon	45c
78	79	Troost	improved Her Majesty	25c
85	85	Tropic Seas	s. violet f. blue purple	1.00
88	84	True Charm	white lavender	30c
72	75	Turco	buff and violet	20c
86	87	Ute Chief	s. violet f. purple	30c
79	82	Valery Mayet	bronze	25c
1919		Vanessa	honey yellow	35c
80	83	Viking	blue bicolor	20c
80	83	Vincentio	tones of purple	90c
83	85	Vingolf s.	cream yellow f. violet edged	90c
72	74	Viola	blue violet	15c
73	76	Violacea Grandiflora	violet blue	20c
1921		Virgilia	medium blue	15c
76	77	Virginia Moore	yellow veined brown	15c
73		Walhalla	blue and purple	15c
79	77	Warrior	tall rich purple	35c
87	87	Wedgewood	china blue	1.00
79	80	White Knight	white	20c
1918		White Queen	white	30c
68	71	Windham	light pink	15c
74	79	W J Fryer	yellow and maroon	20c
72	74	Wyomissing	cream white	20c
78	88	Yellow Hammer	early yellow	40c
85	85	Yellow Moon	creamy yellow	65c
83	85	Yeoman	dominion	1.00
79	81	Yvonne Pelletier	pale blue	20c
75	76	Zouave	white peppered lilac	15c
79	74	Zua	early ruffled white	20c
80	82	Zwannenburg	cream and maroon	15c

DUTCH IRIS

Albert Cuyp	white with yellow blotch	doz.	75c
David Terniers	pale lavender falls yellow	doz.	75c
D. Haring	white tinted lilac	doz.	85c
Hobbema	white, light blue and yellow	doz.	75c
Imperator	fine blue	doz.	85c
Rembrandt	deep blue with orange blotch	doz.	85c
Mixed		doz.	65c

SPANISH IRIS

Cajanus	fine pure yellow	doz.	85c
Mixed		doz.	65c

ONE RHIZOME ONLY

New acquisitions are here offered of which there is not sufficient stock to offer with our regular list. They represent in most cases the best in the iris world with some very recent introductions. We are offering only one rhizome of each to assist collectors in acquiring a few that are in many cases not generally offered. Order early to assure your selections being reserved complete.

1924	Acheron	rich pansy violet	75
1928	Aglaia	light pink lavender	1.25
New	A. J. Muehling	deep red purple	1.25
89 88	Aliquippa	yellow	1.50
83 84	Allies	smoky wine	2.50
80 81	Amador	pink toned bicolor	.50
88 88	Amber	fine yellow	2.00
78 79	Ambigu	s. smoky red f. rose purple	.25
84 82	Andree Autissier	pale lavender blue	.75
1926	Antares	yellow blends	2.00
85 87	Apache	coppery red & red brown	1.50
1923	Apricot	apricot colored self	.25
1923	Aquamarine	soft blue self	.50
1925	Arlette	cream colored	1.25
84 84	Arlington	red purple blend	.75
87 89	Asphodel	light lavender violet	4.00
1921	Auburn	red toned	1.25
1926	Autumn Glow	amber yellow flushed	1.25
85 85	Avarado	deep rich purple	.80
87 84	Azrael	s. ageratum f. petunia violet	1.00
84 84	Azulado	mother of pearl coloring	1.00
1925	Azyiade	light blue lavender	5.00
1924	Balder	s. buff f. red purple	.75
86 85	Bandollero	veined light blue	.75
1925	Barcarolle	s. violet mauve f. deep	.75
1924	Bealdor	see Balder	.75
82 78	Beau Ideal	white bordered violet	.50
1927	Bellatrix	s. pink on yellow f. red	2.50
89 87	Bertrand	a fine dominion	3.50
78 81	Beryl	lavender and anthracene violet	1.25
81 79	Bolingbroke	white	1.00
80 84	Bourem	s. bordeaux red f. reddish	3.00
85	Brenthis	violet tinged with yellow	.25
1926	Buto	deep velvety royal purple	3.00
85 79	Calebee	cream blend and peppered	.50
77 82	Carc Janet	s. pinard f. baryta yellow	.35
92 90	Cardinal	the red toned dominion	6.00
84 83	Caroline E. Stringer	light pink	1.50
85 85	Centurion	lavender & red purple	4.00
88 89	Chartier	white	4.00
1928	Cinnabar	s. violet f. cotinga purple	6.00
85 86	Claridad	clear blue	.75
87 86	Claude Monet	canary and red yellow	3.00

1925	Colias	yellow self	.35
84 83	Commodore	pale to light violet	.50
82 79	Comos.	violet f. deep aniline blue	.35
88 85	Conchobar	bronzy lavender & plum	3.00
89 83	Conquistador	..	large light blue toned	.75
1926	Coppersmith	velvety copper red	4.00
87 86	Coronado s.	lavender f. red purple	.75
87 86	Coronado s.	lavender f. red purple	.75
82 83	Cygnets	white	.75
83 81	Cypriana	gray lavender & purple	.35
1923	Dejah	s. silver blue f. deeper	.35
77 78	Dejazet	bronzy red blend	.35
88 82	Dominion	dauphins blue & purple	2.00
87 82	Dryades.	metallic blue f. reddish	1.50
89 87	Duke of Bedford	s.	reddish f. blackish	2.00
82 83	Dusk	s. lavender f. deep maroon	1.00
76 77	Dusky	Maid buff & mauve purple	.25
84 83	Eden Phillpotts	dark lavender blue	.50
86 87	El Capitan	manganese violet bicolor	2.00
1924	Elinor Blossom	lilac & pansy violet	.50
81 84	Ember	red violet self	.75
72 72	Emir	light lav. & bradleys violet	.35
81 80	Empress of India	lavender to violet	.50
1925	Endymion	warm buff effect	1.25
85 87	Evadne	bronze red self	1.25
1926	Eventide	soft lilac self	1.00
82 81	Fidelio	metallic blue & violet	.75
76 79	Flutter-by	pinard yellow	.50
78 89	Forsete	dark lavender self	.50
1926	Fra Angelico	deep buff & light violet	3.00
89 85	Frieda Mohr	large pink toned	4.00
88 87	Gabriel	steel & light violet blue	5.00
1923	Gandhi	lobelia & lavender violet	.50
76 81	Garden White	white	1.25
86 87	Gargantue	lobelia blue self	4.00
82 84	General McPherson	white and purple	1.00
89 86	Glamour	s.	lobelia f. blackish purple	3.00
84 78	Gloriae	light blue self	3.50
84 81	Golden Promise	deep & flushed yellow	1.50
1930	Goodwill	a new sass variety	1.00
91 87	Grace Sturtevant	velvety red brown	20.00
80 81	Grapta	yellowish brown falls deeper	.35
1923	Guileless	a fine blend	.50
84 81	Hermione	lavender violet	.35
84 82	Hesperiss.	drab f. blackred purple	.50
87 87	Hildago	large lavender self	1.25
1921	Hyperion	blue lavender & violet	1.00
78 82	Inner Glow	soft yellow & ivory yellow	.75
80 80	Jacinto	s. pink f. light violet	1.00
82 78	J. B. Dumas	tall pink toned	.75
1929	Joshua	deep red purple	1.50
81 83	Joya	bradleys violet	.75
	Judith		1.50

83	82	Kashmiriana white washed lavender	...50
85	84	Kestrel lobelia & nigrosin violet	3.50
1929		Klamath velvety bronze brown	50.00
1926		La Bohemienne	helebore red with bronze	3.00
86	87	Labor dark violet heliotrope	5.00
82	79	Lady Lilford deep violet purple	1.00
86	87	L'Aiglon rich bronzy red bicolor	5.00
76	76	Lancelot pale rose mauve	.25
1927		Le Corregesmoky bronze & dark red	5.00
88	78	Leonato s. pale lavender f. dark	1.00
1923		Leota early white	.35
84	83	Lona s. peach f. marked white	1.25
1929		Lorna Doone light pink lavender	1.00
81	82	Maori Princessyellow & burnt lake	...50
83	79	Margerywisteria & bradleys violet	.50
81	81	Marjory Tinley	large lavender bicolor	.50
85	86	Marquissette shrimp pink	8.00
88	90	Mary Barnett	finer Princess Beatriec	3.00
84	81	M. Brun brown toned	3.00
73	78	Melrose	bradleys and madder violet	.50
83	83	Mestorviolet blue and pansy violet	1.00
90	87	Micheline Charraire white	3.50
1926		Midgard a pink and yellow blend	4.00
1929		Milleress light blue lavender	.75
1929		Mirasol pure chrome yellow	25.00
80	79	Mme. Claude Monet	deep red violet	1.00
84	81	Mme. Vernouxa redder Prospero	.50
90	87	Moa a giant dominion	2.00
79	79	Moliere dark violet	.35
1929		Monterey dark bronzed red violet	8.00
80	81	Montserrat deep dull lav. & purple	.50
85	84	Moonlight large silvery white	2.00
80	79	Mopsa large reddish purple	.75
80	80	Morwell medium blue self	.35
1922		Mrs. G. Koehler lavender blend	.50
88	85	Mrs. Perry marbled white	2.50
86	71	Mrs. Robert Emmet	better Mrs. Perry	5.00
92	91	Mrs. Valery West	s. bronzed red brown	20.00
84	82	Mystic white	1.00
84	86	Naomi s. lilac f. dahlia carmine	2.00
1927		Nathalis hortense violet	.50
83	84	Olive Murrellimproved Quaker Lady	2.00
88	87	Ophelia orange cream tinted	5.00
1926		Orion improved Alcazar	2.50
90	88	Ortrud deep red purple	8.00
73	76	Pandora lilac to chinese violet	.35
78	82	Peau Rouge old rose and rich red	1.00
91	89	Peerless mahogany red	7.50
76	83	Petrelhortense & amethyst violet	.50
90	90	Petruchio s. lobelia f. dahlia red	7.00
71	74	Pink Pearl light pink lavender	.50
75	77	Pink Progression light pink lavender	.75
1923		P. L. Battey light pink lavender	.35

1927	Plumed Knight	white edged pink lilac	.50
83 82	Primavera	early yellow	.75
88 88	Primrose	s. deep yellow f. light	2.00
77 80	Prince Charming	white frilled violet	.75
95 95	Purissima	pure white	10.00
1927	Purple Haze	french grey self	3.00
81 82	Rajput	heliotrope violet self	.50
80 81	Rameldo	brownish petunia violet	.50
81 82	Rialgar	buttercup yellow falls striped	.50
1923	Robert W. Wallace	violet & purple blk.	1.25
87 89	Romola	s. pale ivory f. red violet	3.00
1926	Rosa Bonheur 2nd	metallic yellow	3.00
75 83	Rota	carmine rose	.35
1929	Sacramento	white edged red purple	25.00
1929	San Diego improved	Mme. Gaudichau	12.00
90 88	San Francisco	white edged lavender	12.00
1928	San Luis Rey	improved Opera	3.00
91 89	Santa Barbara	large light blue self	1.25
81 85	Sapphid	early dauphin blue	.50
87 86	Sequoiah	s. lilac blend f. black red pur.	5.00
83 82	Silver Ribbon	pink toned	.60
85 84	Sir Galahad	a better Magnifica	2.00
82 90	Sir Michael	s. lav. blue f. red purple	15.00
85 87	Snow White	white	5.00
77 78	Solana	s. yellow f. bordeaux red	.35
86 85	Solferino	lilac red	5.00
1929	Sonoma	large pale corn yellow	4.00
92 90	Souv. de Loetitia Michaud	soft blue	1.75
1928	Surprise	large medium blue	15.00
89.84	Swazi	blue violet & pansy violet	5.00
82 81	Taj Mahal	waxy white	1.00
74 79	Tom Tit	low bright purple	.25
85 85	True Delight	white edged and veined	1.25
84 80	27 Avril	violet blue bicolor	.50
85 86	Valencia	orange buff self	1.50
86 81	Valkyrie	olive lake & maroon purple	1.50
1924	Venetia	deep blue purple	.75
89 89	Vesper Gold	softly flushed yellow	3.00
1928	Waldheim	deep red purple	.75
87 87	Wedgewood	wedgewood china blue	1.75
83 82	Western Dream	lavender blue bicolor	.75
78 80	Whim	light pink lavender	.60
80 80	Wild Rose	wild rose pink	.50
81 78	William Marshall	mauve to violet	.35
1923	Winona	light pink lavender	.35
80 77	Yellow Rail	s. lemon yellow f. veined	.35
63 83	Yellowstone	s. straw yellow f. pansy	4.00
87 82	Yolande	improved Mme. Gaudichau	1.25
78 81	Zada	white	.50
85 85	Zulu	s. aniline blue f. purple	3.00

DWARF IRIS

Dwarf iris make excellent subjects for the rock garden and borders. We highly recommend Cyanea a fine dark purple, and Orange Queen, an excellent yellow. We have a fine supply of these and will gladly quote prices for large lots.

83 85	Azurea	sky blue	25c
59	Brautjungfer	white feathered	25c
59	Bridesmaid	see Brautjungfer	
53	Butterfly	cream and olive	25c
65	Chamaeiris	medium blue	25c
63	Chamaeiris Aurea	yellow	20c
65	Cyanea	dark purple	15c
new	Endymion	dark ruby red	50c
78 76	Eburna	soft cream yellow	25c
1909	Golden Dwarf	yellow	30c
1929	Jaune	yellow	30c
1920	Fiancée	white	25c
1901	Libra	blue purple	25c
74 85	Marocain	dark purple	25c
1911	Mireille	dark purple	25c
1920	Orange Queen	best yellow	15c
66	Pumilla Alba	white	25c
1920	Royal Purple	dark purple	25c
75	Stewart	yellow	20c

RANUNCULUS

Ranunculus are a buttercup like flower in a variety of colors. They are not hardy and must be dug and handled similar to gladiolus. In the west a mulch of straw or peat will generally bring them through the winter. Plant about 2 inches deep.

Mixed colors doz. 30c

ANEMONES

Anemone coronaria De Caen or poppy-flowered anemone is a beautiful blubous plant with a wide range of color.

Mixed colors doz. 30c

DOMINION COLLECTION

Bruno	Majestic	Yeoman	Titan
	Bertrand	or Romola	
			\$8.00

RAINBOW COLLECTION

Afterglow, Dream, Georgia, Iris King, Lent A. Williamson, Ma Mie, Oriflamme, Opera, Princess Beatrice, Rheinnixe, Shekinah, White Knight

\$1.75

MAKE YOUR OWN COLLECTIONS

YOUR SELECTION

Any 30 for \$3.50

Barton Harrington		Mother of Pearl
Florentina Blue		Princess V. Louise
Lent A. Williamson		Prosper Laugier
Albert Victor	Fenella	Oriflamme
Archeveque	Florentina	Parc de Nuilly
Arnols	Germanica	Parisiana
Azure	Gertrude	Pocahontas
Blue Boy	Homer	Powhatan
Caporal	Honorabile	Quaker Lady
Cengialti	Ivanhoe	Queen of May
Carmencita	Jacuisiana	Red Cloud
Camelot	Japanesque	Rheinnixe
Celeste	Kathryn Fryer	Rodney
Col. Candelot	Loreley	Rosalind
Crimson King	Ma Mie	Roseway
Dalila	Mandalisca	Sans Souci
Daniel Leseur	Mary Garden	Swatara
Diadem	Mme. Chobaut	Virginia Moore
Dimity	Mrs. Cowley	Virgilie
Dream	Mrs. Fryer	Windham
Eckesachs	Nibelungen	Zuave
E. L. Crandall	Nine Wells	Zwannenburg
Eldorado	Flavescens	

Any 20 for \$3.50

Fuerstin Lonyay		Princess Beatrice
Afterglow	Isis	Prospero
Alcazar	Juniata	Phyllis Bliss
Anne Leslie	Kochii	Prosper Laugier
Brandywine	Kathryn Fryer	Tristram
Caterina	Merlin	Sherwin-Wright
Dream	Mother of Pearl	Shekinah
E. H. Jenkins	Mrs. Alan Gray	White Knight
Iris King	Navajo	Viking
Isolene	Opera	Virginia Moore

Any 10 for \$3.50

Mrs. H. F. Bowles	Souv. de Mme. Gaudichau	
Ambassadeur	Jenett Dean	Valery Mayet
Brandywine	Mady Carriere	Sindjkat
Georgia	Magnifica	Susan Bliss
Lady Foster	Mildred Presby	Sweet Lavender
J. J. Dean	Mlle. Schwartz	

OUR SELECTION

100..all different labeled and postpaid				\$10.00	
25	grade	E	varieties	"	2.50
25	grade	D	varieties	"	3.50
25	grade	C	varieties	"	5.00
25	grade	B	varieties	"	7.50
10.	grade	A	varieties	"	5.00

IRIS CULTURE

The prime requisites for bearded Iris are good drainage and sunshine. For best results they should not be planted on northern exposures, under shade trees or overhanging shrubs among dense bedding plants or grass, near eaves or other places where water is apt to collect.

If drainage is not good, raised beds should be prepared. All undecomposed or commercial fertilizers should be avoided. Lime or wood ashes are beneficial, especially on acid soil.

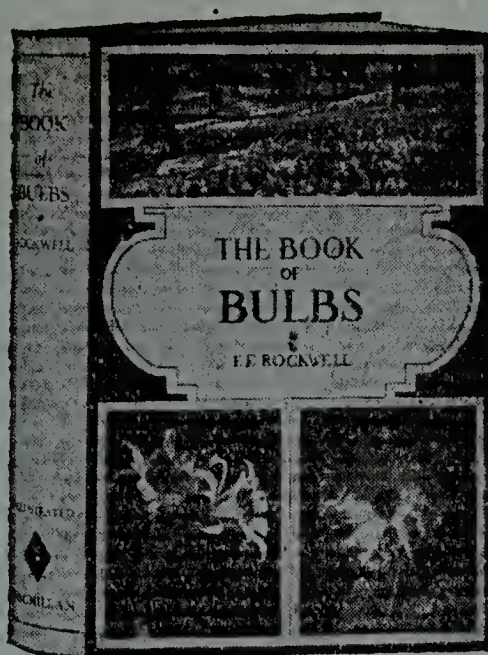
Plant the Iris like a duck on the water, with the top of the **rhizome** or enlarged root and foliage **on top of the ground and exposed** to full sun and the rootlets well-firmed in the ground.

Water every two weeks until established, after which no irrigation is usually necessary. Replant and thin every three or four years. Do not spade or cultivate deeply, as this destroys many of the feeder roots.

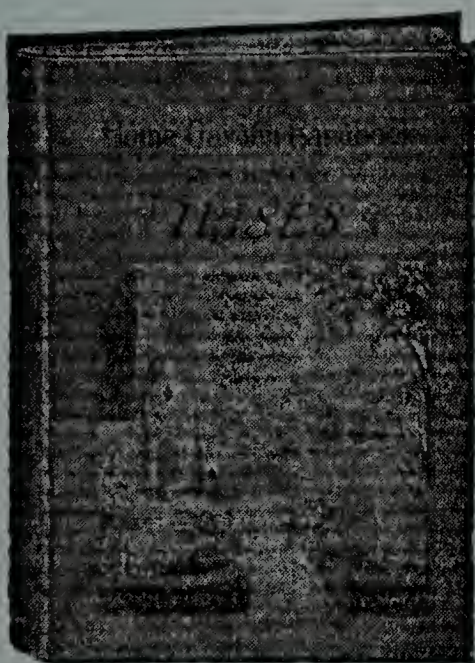
We shall be glad to advise in any further problems.

Yours for better Irises,

SIL-MAR IRIS GARDEN.



THE BOOK OF BULBS, by F. F. Rockwell. Will help you grow bulbs successfully for spring, summer, fall, and winter flowering, inside and outside your home. The information in this book tells, and its pictures show how to grow 70 different bulbous plants including tulips, daffodils, hyacinths, lilies, gladiolus, dahlias, peonies, irises, begonias, cannas, bloodroots, and dozens of others. Recommended as the most complete and newest guide to bulb growing. 187 illustrations, 264 pages. **\$3.00**



IRISES, by F. F. Rockwell. A handy guide which will bring you success with irises and show new uses and effects possible in your garden. Describes the dwarf, early, German, Japanese, Siberian, water, crested, Spanish, English, Dutch and other types; tells the best soils; what fertilizers to use; how to plant; and what care is necessary. Tells how to propagate stock for your own use. 54 illustrations, 80 pages. **\$1.00**

Iris

The "Goodness of the Rainbow" means,
I bring a message true;
From Winter, Spring to Summertime
I've pushed my blossoms through.
How thrilling in the dewy morn
So see what overnight—
Has taken place in your front yard,
Most wonderful the sight.
How marvelous the color scheme,
Past artist's brush to wield,
Its many tinted shades and lines
The rainbow seems to yield.
In color-mass and single bloom,
In tracery and form;
In queenly grace she stands alone,
Her equal yet unborn.
The Cherry Blossom for Japan,
While England has the Rose;
And Holland has her Tulip beds,
Yet everybody knows—
That Iris is from every clime,
The old world and the new:
Historic graves her colors bear
Caught from the sky of blue.
It was of her the Saviour said
(Her beauties He portrayed),
"That Solomon in royal dress
Was not like these arrayed."
And standing with inviting air
To stranger and to friend;
The longer known, the more beloved,
Her qualities attend.

—Mrs. W. W. Brown, Sioux City.

Courtesy, W. S. Snyder