

MG-61

148
4

Report II 68

IC(4)

4

AIRCRAFT ACTION REPORT

~~CONFIDENTIAL~~

RESTRICTED
(Reclassify when filled out)

REPORT No. _____

VI. LOSS OR DAMAGE, COMBAT OR OPERATIONAL, OF OWN AIRCRAFT (of those listed in II only).

(a) TYPE OWN A/C	(b) SQUADRON	(c) CAUSE: TYPE ENEMY A/C, TYPE GUN, OR OPERATIONAL CAUSE	(d) WHERE HIT, ANGLE (List armor, self-sealing tanks, equipment hit)	(e) EXTENT OF LOSS OR DAMAGE, (Give Bureau serial number of planes destroyed)
1				
2	None			
3				
4				
5				
6				
7				
8				
9				
10				
11				
12				
13				
14				

VII. PERSONNEL CASUALTIES (in aircraft listed in II only; identify with planes listed in VI by Nos. at left).

(a) NO	(b) SQUADRON	(c) NAME, RANK OR RATING	(d) CAUSE	(e) CONDITION OR STATUS
	None			

VIII. RANGE, FUEL, AND AMMUNITION DATA FOR PLANES RETURNING

(a) TYPE A/C	(b) MILES OUT	(c) MILES RETURN	(d) AV. HOURS IN AIR	(e) AV. FUEL LOADED	(f) AV. FUEL CONSUMED	(g) TOTAL AMMUNITION EXPENDED				(h) NO. OF PLANES RETURNING
						.30	.50	20MM	MM	
PBJ-1	238	207	2.8	973	429	N	0	N	N	20

IX. ENEMY ANTI-AIRCRAFT ENCOUNTERED (Check one block on each line).

CALIBER	NONE	MEAGER	MODERATE	INTENSE
HEAVY — Time-fused shells, 75mm and over	X			
MEDIUM — Impact-fused shells, 20mm-50mm	X			
LIGHT — Machine gun bullets, 6.5mm-13.2mm	X			

X. COMPARATIVE PERFORMANCE, OWN AND ENEMY AIRCRAFT (use check list at left).

SPEED, CLIMB,
at various altitudes

- TURNS
- DIVES
- CEILINGS
- RANGE
- PROTECTION
- ARMAMENT

No enemy aircraft encountered.

AIRCRAFT ACTION REPORT

CONFIDENTIAL

RESTRICTED
(Reclassify when filled out)

(OMIT THIS SHEET IF NO ATTACK WAS MADE)

REPORT No. _____

XI. ATTACK ON ENEMY SHIPS OR GROUND OBJECTIVES (By Own Aircraft Listed in II Only).

- (a) Target(s) and Location(s) Matupi Island, Target 500 NB (b) Time Over Target(s) 1049-1050L (Zone) _____
(FOR SHIPS INCLUDE ALL IN AREA UNDER ATTACK)
- (c) Clouds Over Target clear (BASE IN FEET, TYPE AND TENTHS OF COVER)
- (d) Visibility of Target clear (e) Visibility 10 (MILES)
(CLEAR, HAZY, PARTIALLY OBSCURED BY CLOUDS, ETC.)
- (f) Bombing Tactics: Type level Bomb Sight Used Mk 15 mod 7
(LEVEL, GLIDE OR DIVE) (TYPE)
- Bombs Dropped per Run all Spacing _____ Altitude of Bomb Release 10,000-12,800'
(NUMBER) (FEET) (FEET)
- (g) Number of Enemy Aircraft Hit on Ground: Destroyed None Probably Destroyed None Damaged None

(h) AIMING POINT	(i) DIMENSIONS OR TONNAGE	(j) NO A/C ATTACKING (k) SQUADRON	(l) BOMBS AND AMMUNITION EXPENDED, EACH AIMING POINT	(m) NO HITS On Aiming Point	(n) DAMAGE (None, slight, serious, destroyed or sunk)
1		6	6 x 1000 GP		
<u>Target #500</u>		<u>VMB-413</u>	3 x 2000 GP		
2		8			see "o"
		<u>VMB-433</u>	8 x 2000 GP		
3		6			
		<u>VMB-443</u>	5 x 2000 GP		
4					
5					
6					
7					
8					

(o) RESULTS: (For all hits claimed on ship targets and for land targets of special interest, draw diagram, top or side view or both, as appropriate, showing type and location of hits. For all targets give location and effect of hits, and identify by numbers above. Use additional sheets if necessary).

There are four photographs attached to this report. The relationship of hits to the target are evident in the two close oblique photographs. The oblique shot of Simpson Harbor shows smoke still rising from the area after the planes had made their breakaway. The fourth photograph annotated was taken nearly one hour after the strike. The bombs that hit the hook of land did no apparent damage while the two bombs that landed in the southwest section of the target fell practically astride three old medium anti-aircraft positions. Those bombs falling on land outside of the target dropped in gardens in middle of island, in a grove of trees to the southwest, in middle of southwest road, and among the recently reported many new buildings to the north of the target.

Photographs attached:
 VMB 413 - 654 3 March 45 20" 10000' Matupi Is.
 85 VMB 433 A 8 1/2" 3-3-45 12800' MAB Matupi
 VMB 443 - 164 3 Mar 45 Matupi 8 1/2"
 MAG-61 18-A 0 40" 12700' 1147L 3 March 45 Simpson Harbor

(p) Were Photographs Taken? Yes Photographs of Damage, When Taken, Should Be Attached By Staple.

AIRCRAFT ACTION REPORT

RESTRICTED
(Reclassify when
filled out)

~~CONFIDENTIAL~~

REPORT No. _____

XII. TACTICAL AND OPERATIONAL DATA. (Narrative and comment. Describe action fully and comment freely, following applicable items in check list at left. Use additional sheets if necessary.)

ENGAGEMENT WITH ENEMY

OWN AIRCRAFT

- Disposition
- Altitudes
- Speeds
- Approach Tactics
- Use of Cover, Deception
- Angles of Attack and Their Effectiveness
- Distance of Opening Fire
- Defensive Tactics and Their Effectiveness

ENEMY AIRCRAFT

- Method of Locating, Distance
- Disposition
- Altitudes
- Speeds
- Approach Tactics
- Use of Cover, Deception
- Angles of Attack
- Distance of Opening Fire
- Defensive Tactics

COMMENTS AND RECOMMENDATIONS

- Own Weaknesses
- Enemy Weaknesses
- Offensive Tactics, Own
- " " Enemy
- Defensive Tactics, Own
- " " Enemy
- Flexible Gunnery, Own
- Escort Tactics
- Fighter Direction
- Use of Radar
- Night Fighting
- Recognition, Aircraft

ATTACK

OWN TACTICS

- Method of Locating Target
- Approach to Target
- Altitudes, Speeds
- Approach
- Dive
- Pull-Out
- Dive Angle
- Strafing
- Retirement
- Defensive Tactics
- Use of Jamming

DEFENSE, ENEMY

- Evasive Tactics, Ships
- Concealment
- Searchlights
- Night Fighter Tactics
- Use of Jamming

COMMENTS AND RECOMMENDATIONS

- Bombing Tactics
- Torpedo Tactics
- Effectiveness of Bombs, Torpedoes
- Selection of Targets
- Fuzing
- Strafing Tactics
- Defensive Tactics
- Use of Radar
- Reconnaissance
- Photography
- Briefing

OPERATIONAL

- Navigation
- Homing
- Rendezvous
- Recognition, Ships
- Communications
- Flight Operations
- Search and Tracking
- Base Operations
- Maintenance

413	433	443			
CALL	PILOT	CALL	PILOT	CALL	PILOT
254B21	Bronleewe	266B21	Adams	279B21	Whitney
255B21	Cochrane	267B21	Leachman	280B21	Booth
256B21	Roome	268B21	Klein	281B21	Christmas
257B21	Gearhart	269B21	Lattner	282B21	Stewart
258B21	Treacy	270B21	Shaw	283B21	Hartman
259B21	Mannes	271B21	Tyler	284B21	Hudson
		272B21	Hendy		
		273B21	Green		

Matupi Island Target #500 is the southeast corner of the island. It is an area approximately 1600' x 1000' and is reported to contain Jap supply dumps

On take-off VMB-433 and VMB-443 joined up in the first group with VMB-433 as the lead squadron. The second group was composed of NZ#8 and VMB-413 with the PV's the leading squadron.

The flight proceeded on course down the northeast coast of N. I., crossing just south of Namatanai to Chinese Ptln., where the flight separated.

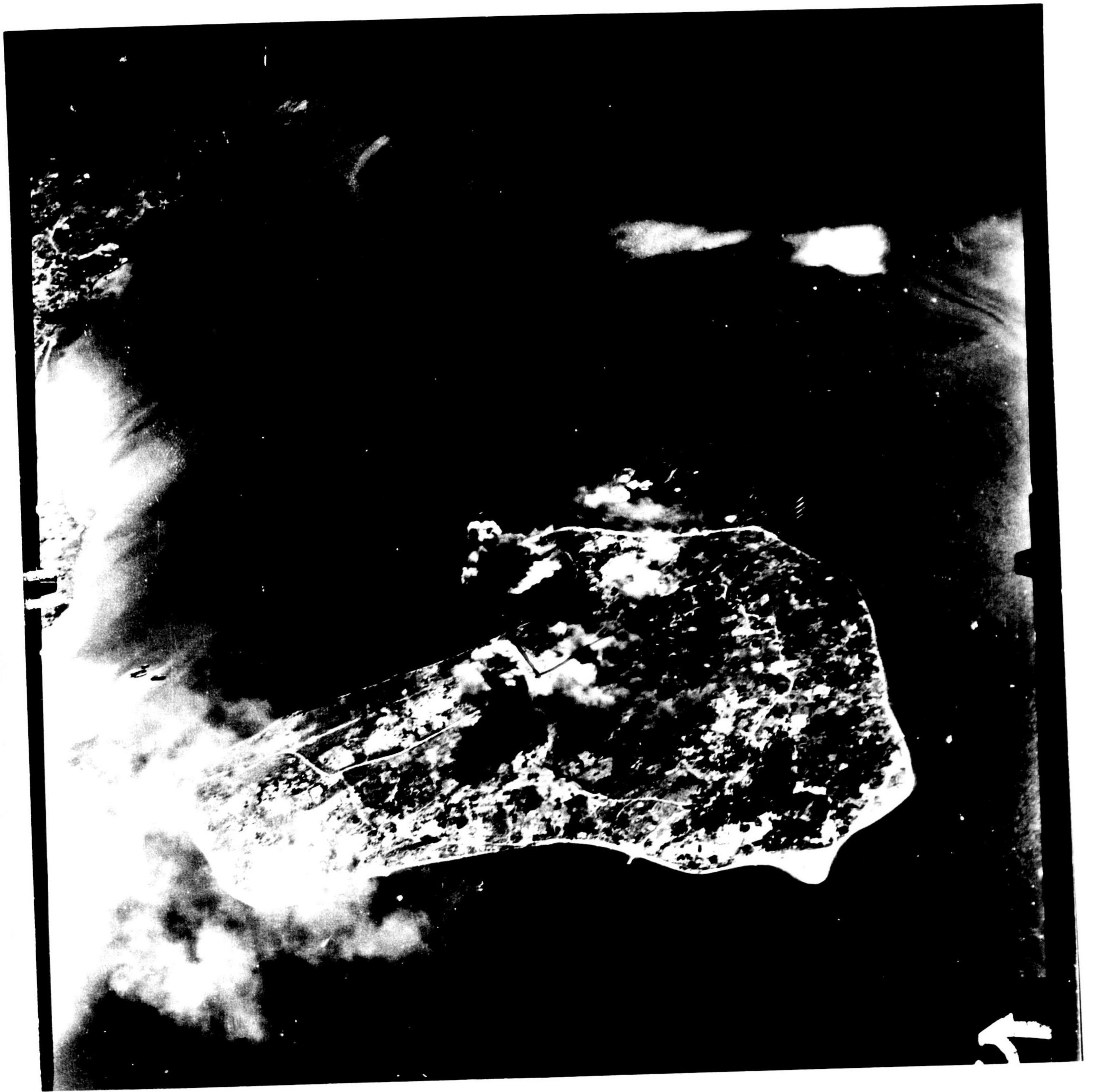
The first group took a course of 204° to the coast and then turned left into the bomb run. The bomb run was made at a speed of 160 kts, with a heading of 145°. The altitudes were 12,800 and 12,400'.

The second group continued to Makada Island, then turned left on to a 288° heading to a point off Praed Point. The bombing run was made at a speed of 160 kts, with a heading of 228°, the altitudes were 10,400' and 10,000'.

Both groups were in right echelon of squadrons, javelined down. The break was to the left and the flight rallied about 5 miles west of the Duke of York Islands. After the rally the flight returned directly to the base.

D. B. HATCH,
Capt., USMC,
Group Intelligence Officer.

P. K. SMITH,
Col., USMC,
Group Commander.



21

22

(185) VMB 433 (A) 3-3-45 (2800) MAB MATUPI



AMB 443-164-3 MAR 45 - LATUPI - 3 1/2"

20



(MAG-61) (18-A) (0) (40") (12,700') (1149L) (3 MARCH 45) SIMPSON HARBOR