

Historic, Archive Document

Do not assume content reflects current scientific knowledge, policies, or practices.

62.37

LIBRARY
HORTICULTURE
★ JUL 7 1933 ★
U. S. Department of Agriculture

ROSES



Julien Potin

Zitella

SPRING
1932

Behrke Nurseries, Inc.
Beltsville, Md.





ROSES

Behnke
Nurseries, Inc.
Beltsville, Md.

Zitella

Business Terms and Suggestions

To avoid mistakes and delays of orders, please read carefully the following paragraphs.

ORDER. An *early* order greatly facilitates selection and reservation of varieties and quantities desired.

When ordering, please give full forwarding instructions, stating the time when delivery is desired.

PRICES. The prices quoted in this catalog are delivered to you. No charge for packing or shipping.

TERMS. Cash with order; but orders will be booked if accompanied with one-fourth cash, the remainder to be sent before shipment or on delivery of goods. We allow a cash discount of five per cent on all orders when cash accompanies order in full. We will accept your check.

GUARANTEE. Greatest care is exercised at all times to render entirely satisfactory service to our patrons.

We endeavor to send out only the best quality of our nursery products and guarantee our stock to be true to name. But we cannot guarantee them to live and grow or give specific results.

We do agree to bear our share of losses, by replacing at half price, any stock that does not grow, providing it was paid for on delivery and loss reported within twelve months.

For any stock which proves unsatisfactory to the buyer and is *immediately* returned we will refund or credit the money.

SUBSTITUTES. We reserve the right to substitute the next best of any variety we cannot supply. Should you object to the above clause, please state expressly when ordering.

COMPLAINTS. No adjustments will be considered unless complaints are made within five days after receipt of stock.

SHIPPING RULES. All goods sent out travel at the purchaser's risk. Special pains are taken in packing, and each shipment leaves our nurseries in first-class condition. However, we cannot guarantee safe arrival of plants.

HOW TO REACH OUR NURSERY. A visit to Washington, D. C., means also a visit to our nurseries.

Owing to our admirable location on the Washington-Baltimore Boulevard—just twelve miles away from the United States Capital—any visitor will find it very easy and most convenient to reach our nurseries without difficulty by automobile, train, bus or street car.

Beltsville is situated on the main line of the Baltimore and Ohio Railroad between Washington, D. C., and New York. The Beltsville Station is only two minutes' walk from our nurseries.

Buses from all over the United States travel the Washington-Baltimore Boulevard; they will always stop at Beltsville, Md., if so desired.

Another accommodation is the hourly local bus service to Beltsville maintained at Washington, D. C. Buses leave there at Tenth Street, N. W. (between D and E Streets), fifteen minutes after every hour.



Introduction



WE SPECIALIZE in the growing of outdoor roses. Long years of experience here and in Germany enable us to accumulate a considerable amount of knowledge to make the growing of roses the main part of our business.

The big difference existing in rosebushes is known only by a few. Cutting a slip of a rosebush is the common belief of people in propagating and growing roses. These roses are called ownroot roses and are not fit, with the exception of a few ramblers, to be planted outside. A dry spell in the summer usually kills such a plant, or, if kept constantly watered, it will survive this time, but hardly bear any flowers.

Roses grown in our nursery are two years old, field grown plants, budded low on Multiflora Japonica, the best suitable understock for this country. Their wonderful deep-going root system enables whatever variety budded on it to grow continuously from spring to fall.

We grow roses for everybody, and varieties suitable for all locations. Our customers are invited to visit our nurseries and see the roses in the fields, or in whatever state of development they may be at the time of the visit.

Behnke Nurseries, Inc



*Thoughts of beauty they are—
Thoughts of Roses.*

HOW TO GROW ROSES

Planting

The planting of roses is the chief factor in growing roses successfully. Select a place in your garden where the sun shines most of the day, away from big trees and their far-reaching roots. Dig the bed up from sixteen to eighteen inches deep. Then make a hole sufficiently deep and large enough that the roots are in no way crowded. Spread roots well in all directions. The budding place located just above the roots has to be one and a half to two inches below the surface.

After filling the hole three-quarters with soil, pack the soil around the plant well with your feet. Fill half of the remaining hole with well-rotted cow manure. If this or any stable manure is not on hand, take two handfuls of bone meal and one handful of commercial sheep manure and distribute it thoroughly around the plant.

Should the ground be dry, fill the remaining space with water and let it drain well before putting the rest of the soil back. Do not pack in—a loose and fluffy soil will aid the rose in its future growth.

Roses should be planted from eighteen to twenty-four inches apart, with the exception of a few more vigorous growing kinds, which require about twenty-four to thirty inches space.

BEFORE planting, put the roots for a few minutes in a bucket of clear water and see that the roots are thoroughly wet when put into the ground. *THIS, WE ADVISE, SHOULD BE STRICTLY OBSERVED.*

NEVER expose the roots to open air for any length of time. Keep roots always well covered.

If planting CANNOT be done on ARRIVAL of stock, open package and put plants into the cellar or on a cool place for a day or two, completely covered up with wet burlap.

Should the planting be DELAYED for a LONGER PERIOD, dig a trench deep enough to protect the roots well against drying out, or, in other words, hill them in. In doing this, see also that roots go into the ground wet.

THE BEST TIME FOR PLANTING is the fall, because the rose can establish itself well, and therefore gets a good start in the coming spring.

Pruning

Well-formed, long-stemmed roses are the results of skillful pruning. As a rule, this is never done severely enough. Most people like to keep their bushes as big as possible, and short-stem flowers in quantity, but not in quality are the results. Cut the long branches back from twelve to fourteen inches, smaller ones from two to four inches. This should be done in the spring, when the buds commence to break out.

Diseases

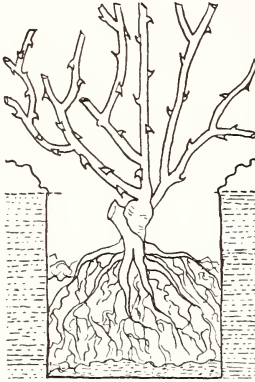
Blackspot and mildew, the rose's worst enemies, can be controlled with the spraying of bordeaux mixture, or any other well-known spray. Spraying at intervals of three to four weeks should keep these diseases under control. It also kills the green plant lice appearing on the plants in cool and wet summers.

Protection Against Frost

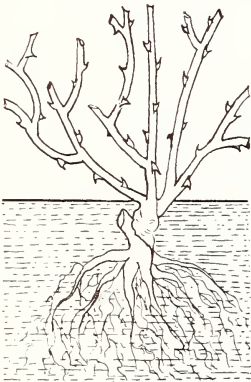
Before frost, it is better for some of the Hybrid Tea and Tea Roses that the lower branches are hilled up six to eight inches with dirt. And this, covered with leaves, should help considerably toward keeping the plants through a severe winter.

Illustration on page 6 shows exactly how the planting, the protecting against frost and the pruning should be done.

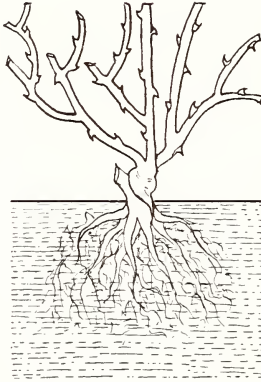
RIGHT HOLE
ROOTS WELL
SPREAD



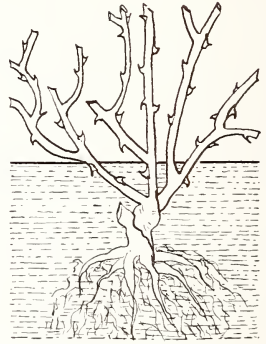
WRONG HOLE
ROOTS
CROWDED



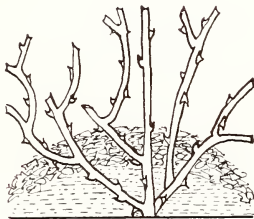
PLANTED RIGHT



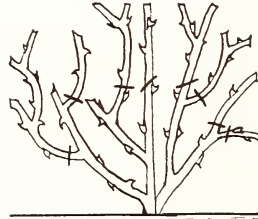
PLANTED TOO HIGH



PLANTED TOO DEEP



PROTECTING AGAINST
FROST WITH DIRT
AND LEAVES



A ROSE PROPERLY
PRUNED

Feeding

The rose is a hungry plant, therefore feed it well, and it will be thankful to you.

Commence feeding your roses in the EARLY SPRING, at the time the pruning is done. Commercial sheep manure and bone meal, equally divided—half a pound per plant—cultivated well into the ground (two to three inches deep) is sufficient for the summer. Fertilization in this way supplies the rose with substantial food. However, to stimulate the growth in the SUMMER TIME, it is advisable to apply a quicker working fertilizer from April to August at intervals of six to eight weeks. Two handfuls of this, well cultivated into the ground, is all that is necessary for one plant. Any hardware store carries fertilizer of this kind.

Our own BRAND of FERTILIZER for spring, summer and fall feeding, put up especially for us according to our own formula, is guaranteed to give best results.

In the FALL, put cow manure around the plant. If not available, half a pound of sheep manure and bone meal a plant will do.

Should you be in doubt about anything, please write a letter, or, better still, come to our nursery, to which you are cordially invited at any time, and we shall be glad to explain to you whatever the matter seems to be.

ROSES

Hybrid Tea, including Pernetiana Roses (H. T.)

Most popular and generally planted Roses—blooming almost continuously at short intervals from spring to fall, producing well-formed, beautiful and fragrant flowers.

Hardy in almost all parts of the United States. Keep them well protected against frost in climates subject to zero weather.

Tea Roses (T.)

The original Everblooming Rose. Displays flowers more freely than the Hybrid Tea, but is not as hardy as same. Needs especially careful protection against frost. Advisable to be planted in southern climates. (Its name derived from the scent of tea it possesses.)

Hybrid Perpetual Roses (H. P.)

They are almost winter-hard—very strong in growth, with large, full, fragrant flowers, but not so often blooming as the Tea and Hybrid Tea Roses; however, they produce in one burst of bloom, not to be surpassed by continuously blooming sorts.

Polyantha Roses

Everblooming, dwarf Roses, bushy plants, seldom more than eighteen inches high, very hardy, small flowers in enormous clusters. Roses blooming continuously and lavishly throughout the growing season. All sorts are of different type. Great value for edging, massing, and also for mingling with other flowers.

Climbing Hybrid Tea (Cl. H. T.), Tea (Cl. T.) and Hardy Climbing Roses (Cl.)

The former two groups are the climbing sports of various Hybrid Tea and Tea Roses. They bloom mostly during spring and the late part of the summer—best flowers on spurs from the old wood; hardiness about equal to Hybrid Teas and Teas. If bushes grow too big, remove some of the new growth, but keep old seasoned wood for production of flowers.

Best results in the South and districts with temperate winters. Need careful protection in regions with severe winters because of larger growth.

There are two types of Hardy Climbing Roses—the small-flowered ones, or Ramblers, and the large-flowering Climbers.

The first type (Rambler) blooms on shoots, which arise during the spring from wood grown the summer before. Prune only in the summer after they have finished blooming.

The second type (large-flowering Climbers) has better flowers on old wood, therefore treat them like the Climbing Hybrid Teas and Teas.

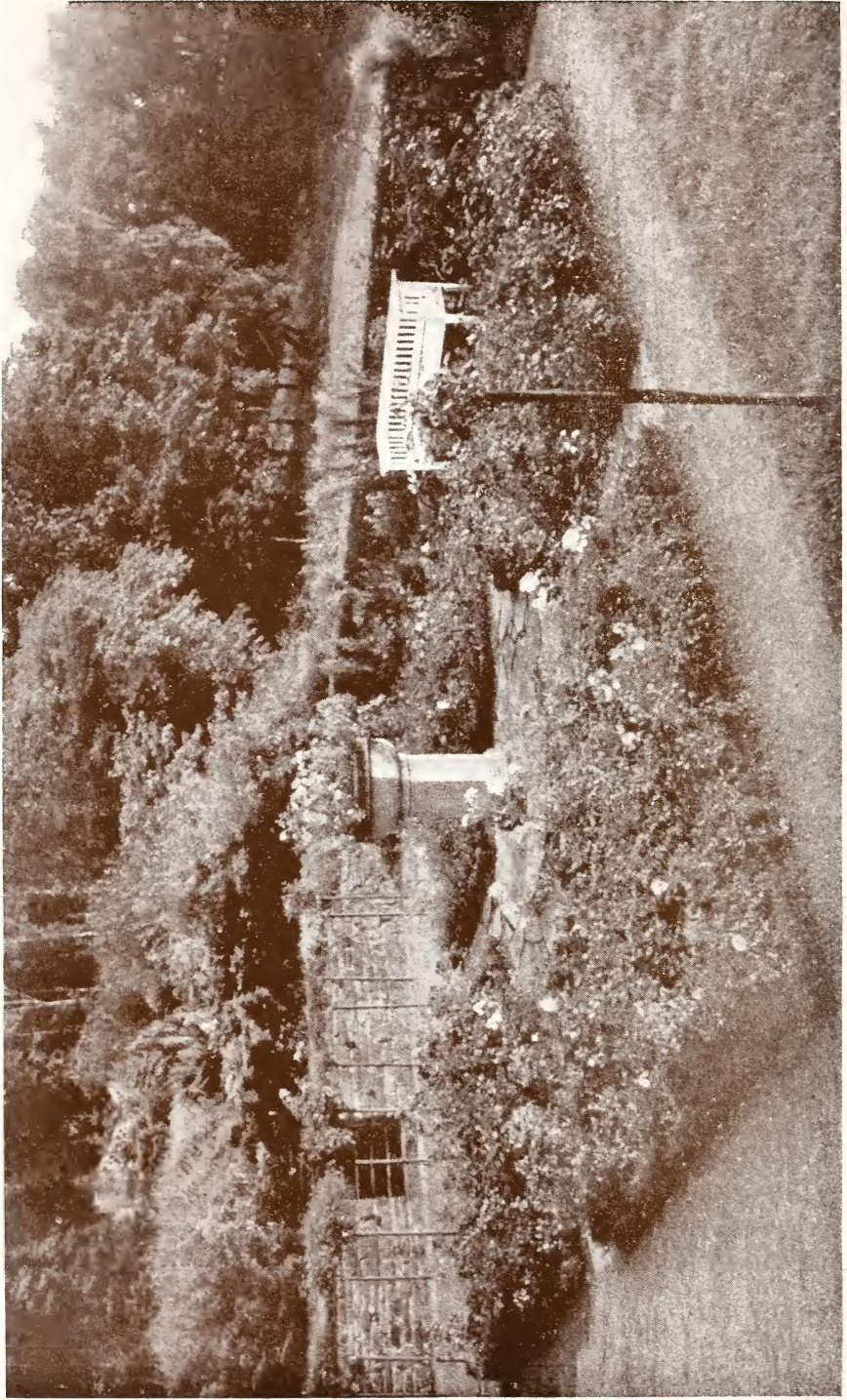


Rev. F. Page Roberts

ROSES

Latest Introductions and Newest Varieties

- ALICE STERN. HT. (F. Gillot, 1926.)** Exquisite, pointed buds, white, daintily tinted with creamy salmon, opening to moderately large flowers of fine petalage, sweetly scented and long lasting. Thrifty, and especially free flowering in autumn. \$1.50 each.
- CHARLES P. KILHAM. HT. (Beckwith & Sons, 1926.)** One of the finest roses, large, beautifully shaped blooms of brilliant orange, suffused with glowing scarlet; slightly fragrant. Foliage resistant to mildew; strong growth, bushy, upright. \$1.25 each.
- E. G. HILL. HT. (E. G. Hill Co., 1929.)** Large, pointed buds, opening to full double flowers of a dazzling scarlet, shading to a deeper red as they develop; strong, vigorous and free flowering. \$1.00 each.
- ELIZABETH OF YORK. HT. (Dobbie & Co., 1928.)** Ovoid buds, very beautiful when half open; flower medium size, semi-double, of bright cerise pink, suffused with yellow. Moderate, upright growth, good bloomer. \$1.00 each.
- FLOREX. HT. (The Florex Garden, 1926.)** Long, pointed buds and big-centered flowers of glowing coral salmon-pink, suffused with orange-red; intensely fragrant. Strong, healthy grower. \$1.00 each.
- GOLDEN DAWN. HT. (P. Grant, 1929.)** An exquisite light lemon-yellow, sometimes tinged with red. Well-shaped large flower, splendid grower. \$1.50 each.
- GOLDEN GLEAM. HT. (G. Beckwith & Son, 1926.)** Flower golden-yellow with scarlet rays. Upright bushes, rich flowering. A very attractive flower. \$1.25 each.
- GRUSS AN COBURG. HT. (Felberg-Leclere, 1927.)** Medium-sized buds of coppery orange color, large round flowers, golden-yellowish brown with a sheen of red and violet. Very extreme coloring, strong scent. Upright growth, blooming continuously. \$1.50 each.
- IMPRESS. HT. (A. Dickson & Sons, 1929.)** Large pointed buds; when first unfolding they are rosy red with orange suffusion. The full flowers, beautifully shaped, are of enormous size, extremely double of striking salmon cerise with golden sheen. \$1.50 each.
- JOANNA HILL. HT. (J. H. Hill Co., 1928.)** Long-stemmed, large buds, deep flowers of creamy yellow, orange basing. Fine, tall, vigorous grower. \$1.00 each.
- JULIEN POTIN. HT. (Pernet-Ducher, 1927.)** Pointed buds on long stems, fine lemon-yellow; well-formed cupped flowers of primrose, darker shaded. Strong growth, upright plant. This is a rose of wonderful color and most attractive shape, very free flowering and resistant to disease. It has done extremely well with us, and we recommend it especially. \$1.00 each.
- KÖNIGIN LUISE. HT. (Christoph Weigand, 1927.)** Extremely large, ovoid buds and double, high-centered, pure white flowers with faint lemon tint in the center. A beautiful, attractive rose. Strong, and extraordinary rich display of flowers. \$1.00 each.
- LADY MARGARET STEWART. HT. (A. Dickson & Sons, 1926.)** Well-formed buds, large bloom, golden-yellow, shaded and streaked with orange and red. \$1.00 each.
- LADY SYLVIA. HT.** A handsome Madame Butterfly type, but colored as Rapture; flowers are only larger. Very beautiful, of good growth. \$1.00 each.
- LI BURÈS. HT. (P. Dot, 1928.)** Fine red and pink flower, strong stems, blooming continuously. Vigorous, healthy bushes. \$1.00 each.
- MARGARET McGREDY. HT. (S. McGredy & Son, 1927.)** Pointed buds, double-cupped flowers of marvelous coral-red color. Very hardy plant, continuously in bloom. Vigorous bushes and strong stems. A delightful rose. \$1.00 each.



A typical rose garden.

- MARIE MAASS. HT. (C. Maass, 1928.)** A giant flower of most perfect shape. Pure white, when opened ivory white; wonderful perfume. This rose is similar to the old Kaiserin Augusta Victoria, but the flowers are larger and it grows stronger. Very hardy. \$2.00 each.
- MEVROUW G. A. VAN ROSSEM. HT. (Howard & Smith, 1928.)** An extraordinary rose of most striking blending of dark, vivid orange and apricot on a golden-yellow ground; it retains a most marvelous hue of golden salmon and light orange upon opening; frequent touches of bronze on the reverse of the petals. Fine long stems and vigorous growth. This is one of the most outstanding new roses, always astonishing by its changing vivid colors and its perfect shape. It certainly is worth having. \$1.00 each.
- MRS. A. R. BARRACLOUGH. HT. (S. McGredy & Son, 1926.)** One of the best new varieties, most charming color, unchanging, extremely large buds and flowers; pure pink shaded with clear light yellow at the base of petals. Long, slender stems, unusually strong growth; produces very freely. \$1.00 each.
- MRS. ERSKINE PEMBROKE THOM. HT. (Howard & Smith, 1926.)** An outstanding new rose which is considered to be one of the most useful yellow varieties. The buds are large and slender; blooms of fine, rich yellow. Strong growth, floriferous. \$1.00 each.
- NORMAN LAMBERT. HT. (S. McGredy & Son, 1926.)** Large, beautiful copper-orange buds and flowers of perfect shape. Moderate grower, rich flowering. \$1.50 each.
- PATIENCE. HT. (S. McGredy & Son, 1927.)** Long, high-pointed bud of deep carmine, opening into an immense semi-double flower of a rich, rosy carmine, shaded with orange and orange-scarlet. Bushy growth; profuse, continuous bloomer. \$1.00 each.
- PRESIDENT HERBERT HOOVER. HT. (L. B. Coddington, 1930.)** A talisman type, large flowers on long, strong stems. Rich, brilliant coloring of cerise pink, flame, scarlet, yellow and orange. Very attractive. Doing well in partial shade. Healthy, vigorous and freely flowering plant. \$1.00 each.
- PROFESSOR GNAU. HT. (Math. Tantau, 1928.)** One of the latest imported varieties. Buds on strong stems; when half opening yellow with red sheen, double flowers, creamy fading, strong perfume. This is a very handsome rose. Hardy, upright bushes; blooming continuously until frost weather. \$2.00 each.
- RAPTURE. HT. (Traendly & Schenek, 1926.)** A very delicate, fine type, similar to Madame Butterfly, but of greater charm. Beautiful coloring of glowing apricot-pink with golden shading. Bushes vigorous and floriferous.
- RICHARD E. WEST. HT. (A. Dickson & Son, 1924.)** A sweet dainty rose of light yellow. Large, pointed buds and cupped, symmetrical flowers, blooming continuously from early summer until frost. Strong plant and rich flowering. \$1.00 each.
- SIR DAVID DAVIS. HT. (S. McGredy & Son, 1926.)** Pointed buds and high-centered flowers of glowing rich crimson; fragrant. Tall plants of good growth and blooming qualities. \$1.00 each.
- TALISMAN. HT. (Montgomery Co., 1929.)** Brilliant red and gold buds, opening to well-shaped blooms of the most vivid colors in scarlet-orange and deep yellow. Tall, healthy bushes of strong growth; always in bloom. \$1.00 each.

LATEST POLYANTHA OR BABY ROSES

- GLORIA MUNDI. (G. de Ruiter, 1929.)** A sensational new Baby Rose of glowing orange-scarlet; rather large, fully double, lasting flowers, borne in clusters. Vigorous, bushy plant and abundant bloomer. Undoubtedly the best Polyantha of its type. Its most brilliant newest orange coloring is lasting through the hottest weather without fading, which is common to other orange varieties. This exquisite rose is very useful for edging and bedding because of its impressive unusual color. No other rose yet known or ever described possesses the same striking coloring. It has won awards and commendation everywhere. \$1.00 each.



Kaiserin Auguste Viktoria

J. F. MÜLLER. (J. F. Müller, 1927.) Dark red sport of Rödhätte, surpassing its original kind by its intense glowing red, unfading color, and by its more beautiful double flowers. Fine, healthy grower, blooming successively. \$1.00 each.

JOHANNA TANTAU. (Math. Tantau, 1923.) A charming, cluster-flowered Polyantha, similar in form to Ophelia; very double, large flowers of whitish-pink with yellow sheen in the center; when opening white. Bushy dwarf plant; glossy foliage, abundant blooming. (See illustration on page 21.) \$2.00 each.

EVERBLOOMING ROSES

This Group Consists of America's Most Favorite Everblooming Roses

The Price of All the Roses Noted Below Is 65c Each, \$6.00 for 10,
\$55.00 for 100, Except Where Otherwise Stated. (Fifty or
More at the Hundred Rate.)

ALEXANDER HILL GRAY. T. (A. Dickson & Son, 1911.) Fine-shaped flower of long-pointed form, strong scent, dark lemon-yellow, upright growing.

AMERICAN BEAUTY. HP. (Banerft, 1836.) Dark pink, shaded with carmine. Very fragrant. Too well-known to be commented upon.

ANGÈLE PERNET. HT. (Pernet Ducher, 1924.) A lovely rose of brownish-orange blooms of fine shape; semi-double. Moderate growth.

ASPIRANT MARCEL ROUYER. HT. (Pernet Ducher, 1919.) Very well liked everywhere; of impressive beauty. Bronzy apricot, paling to salmon at edges; upright, wiry habit, blooming continuously. \$1.00 each.

BETTY UPRICHARD. HT. (A Dickson & Sons, 1922.) Copper-red buds; brilliant orange-carmine when opening with light salmon reflexes; spicy fragrance. Strong, healthy bush; persistent blooming.

BRIARCLIFF. HT. (Briarcliff Greenhouses, 1926.) One of the best descendants of Columbia. Large buds and flowers (double) of wonderful rose-pink, fragrant and long-lasting. Stiff and long stems.

CAPTAIN CHRISTY. HP. (Lacharme, 1873.) Character of flower almost similar to Hybrid Tea. Fine fleshy pink, deeper color toward the center. Well-shaped, double, medium-sized flowers. Robust dwarf growth; very floriferous in early summer and autumn.

CHARLES K. DOUGLAS. HT. (H. Dickson, 1919.) Long-pointed buds opening to large, loosely formed flowers of beautiful crimson scarlet; slightly fragrant. This fine red garden rose is almost free from disease; strong in growth.

CHRISTINE. HT. (S. McGredy & Son, 1918.) An unfading bright yellow rose with medium-sized blooms; almost always in bloom. Invaluable as a yellow bedding rose. \$1.00 each.

COLUMBIA. HT. (E. G. Hill Co., 1917.) Bright pink, sweetly scented flowers of exquisite shape and strong, stiff petals. Very well known as an American garden rose.

DAME EDITH HELEN. HT. (A. Dickson & Sons, 1926.) One of the largest and most perfectly shaped pink roses known; sweetly scented and freely producing on long, strong stems.

DUCHESS OF WELLINGTON. HT. (A. Dickson & Sons, 1909.) Long-pointed buds of golden orange, opening to very large saffron-colored, sweetly fragrant roses. Plant very healthy and vigorous and liberal with its flowers.

EDEL. HT. (S. McGredy & Son, 1919.) Very large, well-built blooms of pure ivory-white and globular form; slightly fragrant. It bears its flowers on erect stems; strong grower.



Garten Direktor Nose, a brilliant new red rose, now on display in our nurseries, will be listed in our Fall Catalog.

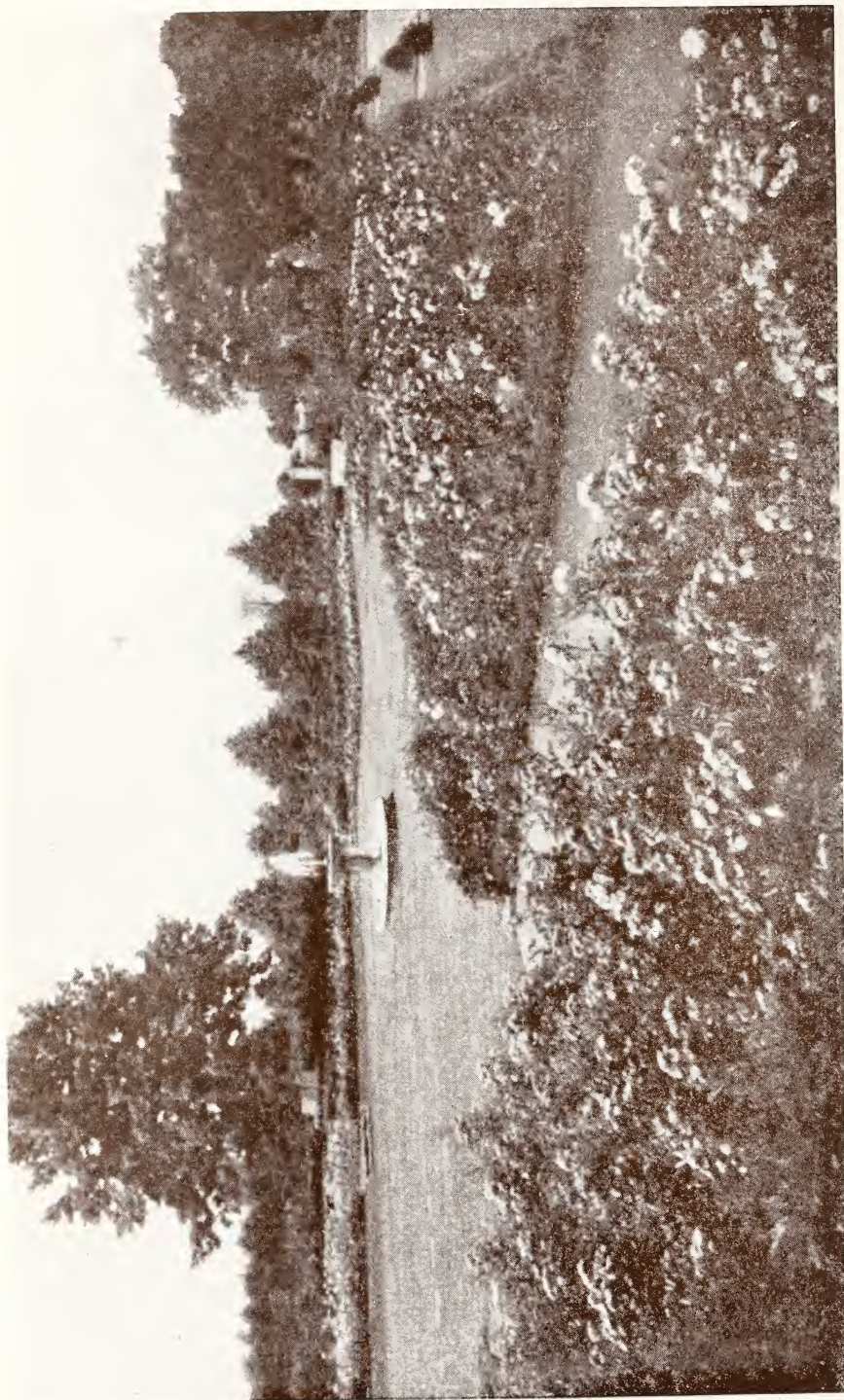
- ETOILE DE HOLLANDE. HT. (H. A. Verschuren & Sons, 1919.)** Brilliant red blooms of magnificent size, perfect in half-open state, with incomparable fragrance. Known as the leading red rose of the world; very disease-resistant and continuously in bloom. The most popular of all red roses. Very strong grower. \$1.00 each.
- EUGÈNE FÜRST. HP. (Souper & Notting, 1875.)** Carmine-red blooms, with deep purple shadings; large, full and very sweetly scented. Plant of considerable but not extreme vigor.
- FEU JOSEPH LOOYMANS. HT. (P. J. Looymans & Co., 1922.)** Long-pointed buds of brilliant orange-buff and large, fairly full flowers of vivid yellow and bright apricot. The flowers are much like Lady Margaret Stewart, but not so double, and are more freely produced. A healthy grower. \$1.00 each.
- FISHER HOLMES. HP. (E. Verdier, 1865.)** Wonderful reddish-scarlet beneath a velvety black sheen bright and glowing; perfectly formed and fragrant. Strong growth, and old plants flower in autumn.
- FRANCIS SCOTT KEY. HT. (J. Cook, 1931.)** Enormous large, light crimson buds and blooms of noblest form, very double (95 petals); slightly fragrant. Plant upright, producing its massive blooms in great abundance; good foliage; quite hardy. Excellent in South. Very strong growing. (See illustration on page 20.)
- FRAU KARL DRUSCHKI. HP. (P. Lambert, 1900.)** This is one of the best white garden roses, commonly known everywhere as the White American Beauty. Large, well-shaped pinkish buds opening to magnificent snow-white blooms of perfect form, but scentless. Blooms freely and continuously and is of most vigorous growth.
- GÉNÉRAL JACQUEMINOT. HP. (Roussel, 1852.)** Scarlet-crimson buds and fine, clear red flowers; deeply fragrant. Strong and bushy in growth, and it sometimes blooms a second time. It has been and still is a favorite with many.

- GENERAL MacARTHUR. HT.** (E. G. Hill Co., 1905.) Crimson-scarlet buds and blooms, usually well-shaped and fragrant. Flowering freely in successive crops. A fine red bedding rose, but blues easily in hot weather. Disease-resistant and strong in growth.
- GOLDEN EMBLEM. HT.** (S. McGredy & Son, 1917.) Intensely yellow buds and blooms of superb shape and texture; borne freely on erect, branching plants, with tough, glossy foliage. Needs careful protection in the winter. \$1.00 each.
- GOLDEN OPHELIA. HT.** (B. R. Cant & Sons, 1918.) Well-shaped, with golden yellow center, and delicately perfumed. The plant is robust and healthy, blooming with great freedom. Its habits are similar to those of the Ophelia.
- GORGEOUS. HT.** (H. Dickson, 1915.) Very double, light yellow blooms, over-spread with copper and orange in very vivid hues. Does especially well in the spring, and is of moderate growth.
- GRUSS AN TEPLITZ. HT.** (Geschwind, 1898.) Scarlet flame crimson: when opening outside petals shading into a dark velvet. Flowers are produced freely from spring to fall; strong in growth; an old favorite.
- HADLEY. HT.** (Montgomery Co., 1914.) A rich crimson-red flower with velvety texture, lovely form and perfume. Floriferous and strong in growth.
- HARRY KIRK. T.** (A. Dickson & Sons, 1907.) Charming buds of elegant shape and substance, opening to deep straw-yellow; semi-double, cupped blooms of large size, with little fragrance. Bush upright and strong; foliage good; hardy plant.
- JONKHEER J. L. MOCK. HT.** (M. Leenders & Co., 1908.) Crimson buds of gigantic size, opening very slowly to enormous blooms of deep vinous-pink, against which the reflexing petals show an inner surface of silver-rose. Plant strong and healthy.
- KAISERIN AUGUSTE VIKTORIA. HT.** (P. Lambert, 1891.) The world's most perfect rose. Well-formed, creamy buds which develop slowly to blooms of absolutely perfect form, pure white with a slight tint of lemon at the center; fine perfume. Moderate in growth and abundance of flowers. (See illustration on page 12.)
- KILLARNEY BRILLIANT. HT.** (A. Dickson & Sons, 1914.) Brilliant dark pink buds and flowers of Killarney type. Excellent in growth and bloom.
- KILLARNEY, DOUBLE WHITE. HT.** (J. A. Budlong & Son Co., 1912.) Very long-pointed snowy white buds, opening to beautifully formed blooms; moderate growth and display of flowers.
- KILLARNEY QUEEN. HT.** (J. A. Budlong & Son Co., 1912.) This is the best of the Killarney class. A little fuller than the original Killarney and stronger in growth. Its large double flowers are of a sparkling cerise-pink.
- LA FRANCE. HT.** (P. Guillot, 1867.) Bright pink flowers with curled petals showing silvery tints; intensely fragrant. The oldest Hybrid Tea Rose, but still in demand by people who favor and enjoy its delicious fragrance.
- LADY ASHTOWN. HT.** (A. Dickson & Sons, 1904.) Satiny buds and blooms of brilliant glossy pink with a yellow glow at base of petals; double and quite fragrant. Plant is strong and free blooming.
- LADY HILLINGDON. T.** (Lowe & Sawyer, 1910.) Slender, pointed buds and elegantly cupped flowers of deep saffron-yellow; fragrant. The plant is erect, with perfect foliage, but hardier than most Teas.
- LAURENT CARLE. HT.** (Pernet Ducher, 1907.) Gigantic oval buds and blooms of deep, glowing carmine-crimson, perfectly formed and pungently fragrant. Very double. Plant of average growth, blooming freely.
- LORD CHARLEMONT. HT.** (S. McGredy & Son, 1922.) Deep crimson, well-shaped, fragrant blooms. Moderately bushy plants. A magnificent red rose. \$1.00 each.
- LOS ANGELES. HT.** (Howard & Smith, 1916.) An extremely beautiful rose with lovely buds and exquisite flowers of salmon-pink with yellow shading and very sweetly perfumed. Good growing habits.
- MISS LOLITA ARMOUR. HT.** (Howard & Smith, 1919.) Deep golden-yellow buds shading into coppery red; fully double, cupped flowers; fragrant. The plant is strong, but it takes considerable skill to grow it well. \$1.00 each.



One of our rose fields.
(This picture was taken in July, 1931.)

- MME. ABEL CHATENAY. HT. (Pernet Ducher, 1894.)** A delicate light pink shaded salmon and carmine, of handsome form but rather small flowers. Good growing habits. It is an old favorite.
- MME. BUTTERFLY. HT. (E. G. Hill Co., 1918.)** Fine, light pink buds and flowers, tinted with gold near the base of the petals; of exquisite form and rich perfume. An intensified "Ophelia."
- MME. EDOUARD HERRIOT. HT. (Pernet Ducher, 1913.)** Known as one of the best colored roses. Sparkling buds of coral-red and orange, opening to large, semi-double flowers of indescribably brilliant orange-red and salmon. Moderately strong bushes; floriferous. \$1.00 each.
- MME. JULES BOUCHÉ. HT. (Croibier & Son, 1911.)** An exceptionally brilliant white garden rose. Superb white flowers, shaded light blush at center; fragrant. A fine, vigorous, healthy grower and graceful bloomer. We like it and want to recommend it strongly.
- MME. SECOND WEBER. HT. (Soupert & Notting, 1908.)** Splendid buds and very double, perfectly formed flowers of bright rose-pink, with salmon shades in the heart. A robust and tall plant, free flowering, fine bedding rose. At its best in cool seasons and late fall.
- MRS. AARON WARD. HT. (Pernet Ducher, 1907.)** A favorite garden rose, with charming little buds of golden buff, unfurling to double, well-shaped flowers of tawny gold and pink, with an agreeable fragrance. A delightful little plant and a successive bloomer.
- MRS. CHARLES BELL. HT. (Mrs. Charles Bell, 1917.)** One of the best roses grown and a general favorite almost throughout the United States. A sport from Radiance, but finer and softer in colors. Too well-known to need recommendation.
- MRS. HENRY BOWLES. HT. (Chaplin Bros., 1921.)** An excellent new pink rose, with extremely well-formed buds and flowers of clear deep salmon-pink. Fairly fragrant; vigorous and free flowering. \$1.00 each.
- MRS. HENRY MORSE. HT. (S. McGredy & Son, 1919.)** A bright flower of two contrasting tones of pink, with an underlying yellow glow; double, high-centered, large, fragrant. A free blooming, hardy plant. This new, improved pink rose is greatly admired everywhere. \$1.00 each.
- MRS. HENRY WINNETT. HT. (John H. Dunlap, 1917.)** Pointed buds and double, high-centered fragrant flowers of brilliant red on long, strong stems. Buds open slowly and last a long time. \$1.50 each.
- OPHELIA. HT. (W. Paul & Son, 1912.)** A remarkably handsome and most famous rose of creamy white and pale pink bloom with a glint of golden yellow in the folds of its petals; very fragrant. Strong plant of good growing and blooming habits.
- PHARISÆER. HT. (Hinner, 1903.)** A very attractive and popular rose. Graceful buds, very well-shaped double blooms of white and rose-pink, shaded with salmon; mildly fragrant. Plant of excellent growth and floriferous. \$1.00 each.
- RADIANCE. HT. (J. Cook, 1908.)** This is a well-known, most popular garden rose of America. Brilliant rose-pink buds, opening to well-formed, shining flowers with lighter tints on the reverse of the petals; globular in shape and very fragrant. Its splendid growth and its wonderful blooming qualities are especially commendable.
- RED RADIANCE. HT. (Gude Bros., 1916.)** Exactly like Radiance, except the color, which is nearly light crimson than red.
- REV. F. PAGE-ROBERTS. HT. (B. R. Cant & Sons, 1921.)** One of the loveliest, most classic roses; a glorified Duchess of Wellington, but with much better qualities in every respect. Copper-red buds of great length, opening to golden-yellow blooms stained outside with red; fully double and very large; fragrant. Strong, branching plant with heavy foliage and excellent blooming qualities. This extremely effective and showy rose, which is entirely different from any other variety, grows very well with us. We recommend it highly. (See illustration on page 8.) \$1.00 each.



Incomparable is the beautiful effect of roses planted in masses.

- ROSELANDIA. HT.** (W. Stevens, Ltd., 1924.) A fine improvement on the Golden Ophelia, with larger flowers and deeper colors. Blooms of rich golden-yellow; fragrant and free flowering.
- SCOTT COLUMBIA. HT.** Similar to Briarcliff, but larger buds and blooms of more vivid rose-pink; fragrant and long lasting. Stronger in growth and better blooming habits than the above.
- SHOT SILK. HT.** (A. Dickson & Sons, 1924.) An unusually beautiful and intensely fragrant rose. Flowers of coppery rose flushed and overshot with apricot and yellow. Moderate grower and fair bloomer.
- SOUVENIR DE CLAUDIUS PERNET. HT.** (Pernet Ducher, 1920.) Excellent buds of clear, fadeless yellow. Beautiful when half open. Plant erect and strong; disease-resistant. Blooms continuously and freely.
- SOUVENIR DE GEORGES PERNET. HT.** (Pernet Ducher, 1919.) An extremely fine rose. Brick-red buds, opening to orange-pink blooms of immense size; very double and deliciously fragrant. A stocky, hardy plant and free blooming.
- SOUVENIR DE H. A. VERSCHUREN. HT.** (H. A. Verschuren & Sons, 1922.) One of the most beautiful large yellow roses of almost perfect form. The color of the light yellow blooms is deepening to orange at the center; sweetly perfumed. Plant is very strong, productive, and usually free from disease. \$1.00 each.
- SUNBURST. HT.** (Pernet Ducher, 1912.) Fine yellow flowers, strongly suffused with orange at the center; fragrant and well shaped. Not very hardy; needs special care.
- THE QUEEN ALEXANDRIA ROSE. HT.** (S. McGredy & Son, 1918.) Fairly full blooms of medium size, velvety scarlet on inside, lightened with yellow on the outside of petals and deep gold at the base. Growth and blooming qualities fair.
- VILLE DE PARIS. HT.** (Pernet Ducher, 1926.) Round buds of clear yellow and big, globular flowers of the Radiance shape. Tall, wiry plant of good growth. \$1.00 each.
- WESTFIELD STAR. HT.** (H. Morse & Sons, 1920.) A distinct, white sport from Ophelia, possessing all its excellent characteristics. Flowers white with lemon-yellow tint. \$1.00 each.
- WILHELM KORDES. HT.** (W. Kordes Sons, 1922.) One of the most beautifully colored roses we know, and also of excellent form. Its long-pointed buds and double, high-centered flowers are of deep golden salmon, overspread with a tint of copper and veined with red. Very fragrant and unusually free flowering. Vigorous, compact growth. This is a most desirable marvelous rose because of its real beauty, fragrance and great floriferousness. It is featured in the rose gardens of those who appreciate the best varieties. \$1.00 each.

POLYANTHA OR BABY ROSES

The Price of Polyantha Roses Noted Below Is 65c Each. \$6.00 for 10, \$55.00 Per 100—Except Where Otherwise Stated. (Fifty or More at the Hundred Rate.)

- AENNCHEN MÜLLER. (J. C. Schmidt, 1907.)** Bright pink blooms of fairly large size. One of the finest roses of its type for mass and border planting. Prolific bloomer.
- CHATILLON ROSE. (A. Nonin, 1923.)** Splendid pink, semi-double blooms with an illuminating touch of orange. Trusses of gigantic size, plant healthy and hardy. This and Änchen Müller are the most brilliant pure pink Polyanthas, and undoubtedly the most floriferous and the showiest of the lot for bedding uses.
- ELLEN POULSEN. (D. T. Poulsen, 1912.)** Large, fairly full flowers of bright rose-pink. Large, compact clusters; profuse bloomer.
- GOLDEN SALMON. (W. Cutbush & Son, 1926.)** Bright orange-scarlet buds; in opening bright, blazing orange. Growth is vigorous and bushy.



Francis Scott Key

GRUSS AN AACHEN. (*Geduldig, 1909.*) Orange-red and yellow buds, and large, light flesh-pink and salmon-yellow flowers with deeper center; very double, much like bunch-flowered Hybrid Tea; faintly perfumed. Very strong, branching plant, healthy and continually in bloom.

KIRSTEN POULSEN. (*D. T. Poulsen, 1924.*) Very large, single light red flowers in great sprays; vivid color. Tall, vigorous bushes, very useful for massed planting and low hedges.

MISS EDITH CAVELL. (*Meiderwyk, 1917.*) An effective rose with small, semi-double flowers of brilliant scarlet-red, shaded darker, produced in big, compact corymbs by sturdy, well-branched plants.

ORLÉANS. (*Levasseur & Sons, 1910.*) A good, reliable type for massing which is very popular. Flowers small, fairly double, and brilliant light red with a whitish center. Blooming without cessation in big, compact clusters. Very strong and healthy plant.

CLIMBING HYBRID TEA, TEA, AND HARDY CLIMBING ROSES

The Price of All Climbing Roses Is 75c Each, \$6.50 for 10, Except Where
Otherwise Noted.

AMERICAN PILLAR. (Dr. W. Van Fleet, 1902.) Fairly large, single flowers of brilliant crimson-pink, with large white centers and golden-yellow stamens. Roses in tremendous clusters on plants of astonishing vigor. Profuse bloomer. Late.

CLIMBING AMERICAN BEAUTY. (Hoopes, Bro. & Thomas Co., 1890.) Brilliant carmine flowers of especially fine form and rich perfume, borne in clusters on a moderately strong, fairly healthy plant. Unique in color and early blooming.

CLIMBING KAISERIN AUGUSTE VIKTORIA.* CL. HT. (A. Dickson & Sons, 1397.) A reliable, charming rose. Pure white, very double, perfectly formed flowers with a faint lemon center. Moderately strong climbing habits; hardy.

CLIMBING LADY ASHTOWN.* CL. HT. (Bradley, 1909.) Just as attractive as Lady Ashtown, but a shade lighter. Sparkling pink flowers lit with a sunny yellow suffusion; fine-pointed blooms with exquisitely recurved petals. Very vigorous plant, unusually free flowering and especially hardy.

*Tender Climbing Roses.

DOROTHY PERKINS. (Jackson & Perkins Co., 1902.) Beautiful miniature flowers of brilliant shell-pink in splendid pendulous sprays. Long, slender canes and pretty foliage. Very popular.

DR. W. VAN FLEET. (Dr. W. Van Fleet, 1910.) One of the most charming hardy climbers. Pale pink buds and flowers, borne on long, individual stems. Enormous thorny canes, perfect foliage. The plant produces immensely during the mid-season.

A DAINY EDGING



Johanna Tantau (Poly.)

- EMILY GRAY.** (A. H. Williams, 1918.) Large, semi-double, deep golden-buff flowers, practically unfading and slightly fragrant; produced singly or in small clusters. Strong growing plant, but tender. Needs protection in severe climates.
- JACOTTE.** (Barbier & Co., 1920.) Fine semi-double flowers of orange-yellow, tinted copper-red; borne in clusters. Strong, profusely blooming plant. Protection in extremely cold regions.
- MARY WALLACE.** (Dr. W. Van Fleet; introduced by American Rose Society, 1924.) An early bloomer. Large, very bright pink flowers illumined with shining gold; double, cup-shaped, moderately fragrant. Plant of splendid vigor. Doing well in very cold climate.
- PAUL'S SCARLET CLIMBER.** (W. Paul & Son, 1916.) Intense scarlet flowers of excellent shape and moderate size, borne in small trusses; plant of moderate growth; bloom early and very liberal.
- SILVER MOON.** (Dr. W. Van Fleet, 1910.) An extremely beautiful rose of purest color, largest size, and attractive shape. Long, creamy buds, showing the golden anthers through transparent petals and nearly single, saucer-shaped, gigantic flowers; produced in small sprays. Extraordinary vigorous plant of perfect foliage. Mid-season.
- TAUSENDSCHÖN.** (J. C. Schmidt, 1906.) A very popular favorite. Large flowers, charmingly ruffled, of many shades of yellow, creamy white and bright rose-pink; slightly fragrant; enormous trusses. Strong, thornless plant; very hardy and healthy.
- VEILCHENBLAU.** (J. C. Schmidt, 1908.) The "Blue Rose." Semi-double, purple-rose flowers, turning to steel-blue. Large, bold trusses on a strong, coarse plant; hardy. Looks charming with pale yellow or white varieties beside it. Rambler. \$1.00 each.
- ZEPHIRINE DROUHIN.** (Bizot, 1868.) Vivid pink, well-filled flowers of splendid shape and size, exquisitely perfumed. Blooms freely in spring on a strong, almost thornless climbing plant with healthy bronzy foliage. Hardy for this class. An old Rose which has recently become popular and greatly in demand. Hardy as Silver Moon. Rarely beautiful, blooms very early, is one of the most desirable of all climbing Roses.

NEW CLIMBING ROSES

- MME. GRÉGOIRE STAECHELIN.** Cl. HP. (P. Dot, 1927.) An astonishing novelty from Spain which is the most beautiful pink climbing rose in existence. Very large fragrant flowers of delicate pink, with big frilled petals stained crimson outside, borne on long, strong stems. Foliage dark green; disease resistant. Growth vigorous, free bloomer. \$1.00 each.
- THE NEW DAWN.** (The Everblooming Dr. W. Van Fleet.) The originators of this new rose (The Somerset Rose Nursery), have been granted Plant Patent Number 1, issued August 18, 1931, by the United States Patent Office which gives them the exclusive right to control the propagation or reproduction of this new variety. A sport from Dr. Van Fleet which is universally acknowledged as the best and most popular American Climbing Rose. This new variety is identical in every way with its parent in size and formation of its flowers; color, etc., but blooms continuously throughout the summer and fall months. Really the first worth-while Everblooming Climber introduced: a variety that every rose lover will be anxious to possess. \$2.00 each.

*As they grow and bloom for us—
they will also grow and bloom for you.*

INDEX TO ROSE VARIETIES

HP., Hybrid Perpetual
 HT., Hybrid Tea
 Poly., Polyantha

T., Tea
 CL., HT., Climbing Hybrid Tea
 Cl., Climbing Rose
 Cl. HP., Climbing Hybrid Perpetual

	Page
BUSINESS TERMS AND SUGGESTIONS..	2
INTRODUCTION	3
HOW TO GROW ROSES	
Planting	5
Pruning	5
Diseases	5
Protection Against Frost	5
Feeding	7
ROSES—Latest Introductions and Newest Varieties	
Alice Stern. HT.	9
Charles P. Kilham. HT.	9
E. G. Hill. HT.	9
Elizabeth of York. HT.	9
Florex. HT.	9
Golden Dawn. HT.	9
Golden Gleam. HT.	9
Gruss An Coburg. HT.	9
Impress. HT.	9
Joanna Hill. HT.	9
Julien Potin. HT.	9
Königin Luise. HT.	9
Lady Margaret Stewart. HT.	9
Lady Sylvia. HT.	9
Li Burès. HT.	9
Margaret McGredy. HT.	9
Marie Maass. HT.	11
Mevrouw G. A. Van Rossem. HT.	11
Mrs. A. R. Barraclough. HT.	11
Mrs. Erskine Pembroke Thom. HT.	11
Norman Lambert. HT.	11
Patience. HT.	11
President Herbert Hoover. HT.	11
Professor Gnau. HT.	11
Rapture. HT.	11
Richard E. West. HT.	11
Sir David Davis. HT.	11
Talisman. HT.	11
LATEST POLYANTHA OR BABY ROSES	
Gloria Mundi	11
J. F. Müller	13
Johanna Tantau	13
A NEW CLIMBING ROSE	
Mme. Grégoire Staechelin. Cl. HP.	22
The New Dawn	22
EVERBLOOMING ROSES—This Group Consists of America's Most Favorite Ever-blooming Roses	
Alexander Hill Gray. T.	13
American Beauty. HP.	13
Angèle Pernet. HT.	13
Aspirant Marcel Rouyer. HT.	13
Betty Uppichard. HT.	13
Briarelliff. HT.	13
Captain Christy. HP.	13
Charles K. Douglas. HT.	13
Christine. HT.	13
Columbia. HT.	13
Dame Edith Helen. HT.	13
Duchess of Wellington. HT.	13
Edel. HT.	13
Etoile De Hollande. HT.	14
Eugène Fürst. HP.	14
Feu Joseph Loomans. HT.	14
Fisher Holmes. HP.	14
Francis Scott Key. HT.	14
Frau Karl Druschki. HP.	14

	Page
Général Jacqueminot. HP.	14
General MacArthur. HT.	15
Golden Emblem. HT.	15
Golden Ophelia. HT.	15
Gorgeous. HT.	15
Gruss An Teplitz. HT.	15
Hadley. HT.	15
Harry Kirk. T.	15
Jonkheer J. L. Mock. HT.	15
Kaiserin Auguste Viktoria. HT.	15
Killarney Brilliant. HT.	15
Killarney Double White. HT.	15
Killarney Queen. HT.	15
La France. HT.	15
Lady Ashtown. HT.	15
Lady Hillingdon. T.	15
Laurent Carle. HT.	15
Lord Charlemont. HT.	15
Los Angeles. HT.	15
Miss Lolita Armour. HT.	15
Mme. Abel Chatenay. HT.	17
Mme. Butterfly. HT.	17
Mme. Edouard Herriot. HT.	17
Mme. Jules Bouché. HT.	17
Mme. Segond Weber. HT.	17
Mrs. Aaron Ward. HT.	17
Mrs. Charles Bell. HT.	17
Mrs. Henry Bowles. HT.	17
Mrs. Henry Morse. HT.	17
Mrs. Henry Winnett. HT.	17
Ophelia. HT.	17
Pharisæer. HT.	17
Radiance. HT.	17
Red Radiance. HT.	17
Rev. F. Page-Roberts. HT.	17
Roselandia. HT.	19
Scott Columbia. HT.	19
Shot Silk. HT.	19
Souvenir De Claudius Pernet. HT.	19
Souvenir De Georges Pernet. HT.	19
Souvenir De H. A. Verschuren. HT.	19
Sunburst. HT.	19
The Queen Alexandria Rose. HT.	19
Ville De Paris. HT.	19
Westfield Star. HT.	19
Wilhelm Kordes. HT.	19
POLYANTHA OR BABY ROSES	
Aennchen Müller	19
Chatillon Rose	19
Ellen Poulsen	19
Golden Salmon	19
Gruss An Aachen	20
Kristen Poulsen	20
Miss Edith Cavell	20
Orléans	20
CLIMBING HYBRID TEA, TEA, AND HARDY CLIMBING ROSES	
American Pillar	21
Climbing American Beauty	21
*Climbing Kaiserin Auguste Viktoria. Cl. HT.	21
Climbing Lady Ashtown. Cl. HT.	21
Dorothy Perkins	21
Dr. W. Van Fleet	21
Emily Gray	22
Jacotte	22
Mary Wallace	22
Paul's Scarlet Climber	22
Silver Moon	22
Tausendschön	22
Veilchenblau	22
Zephyrine Drouhin	22

