

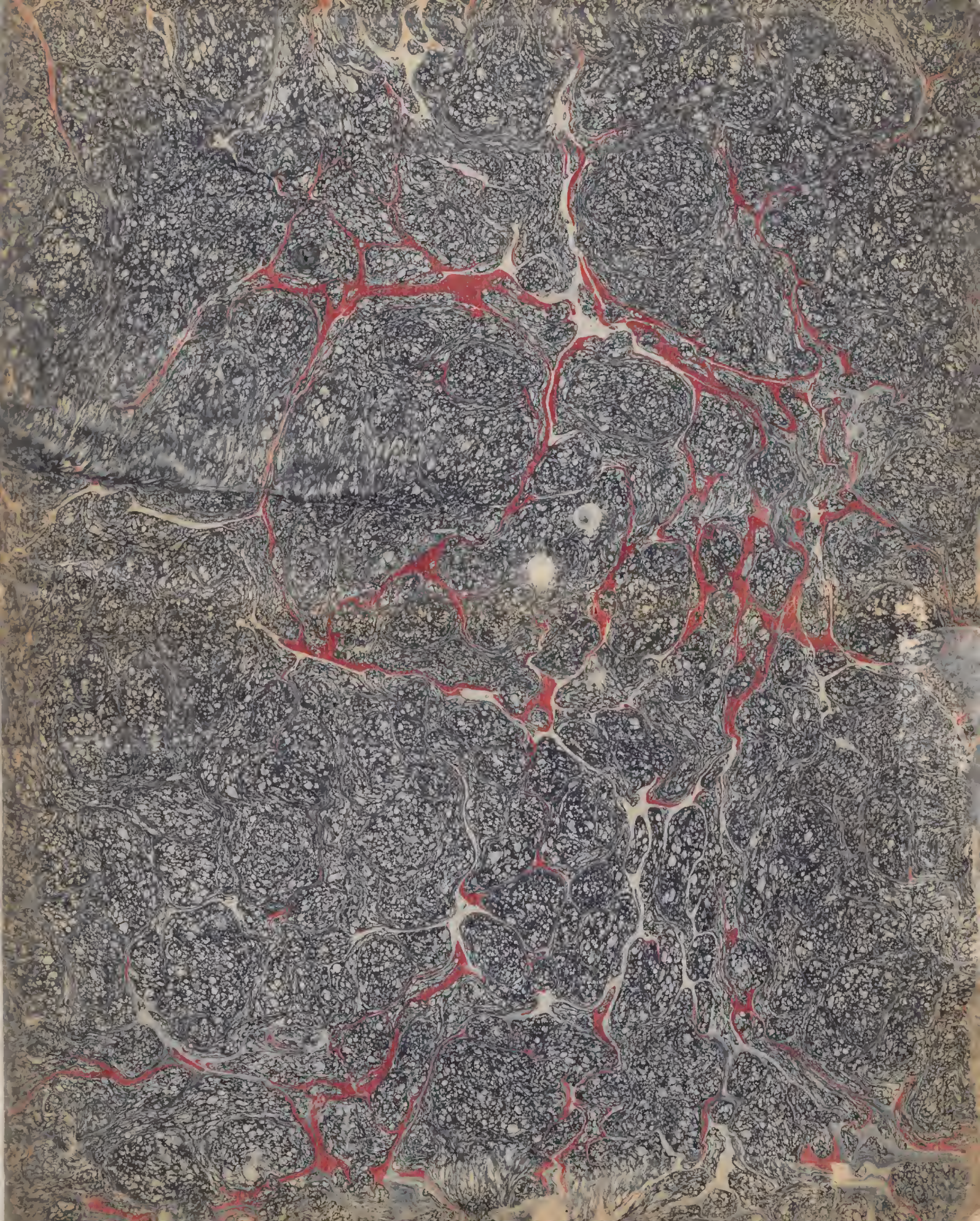




7 7412 000010216

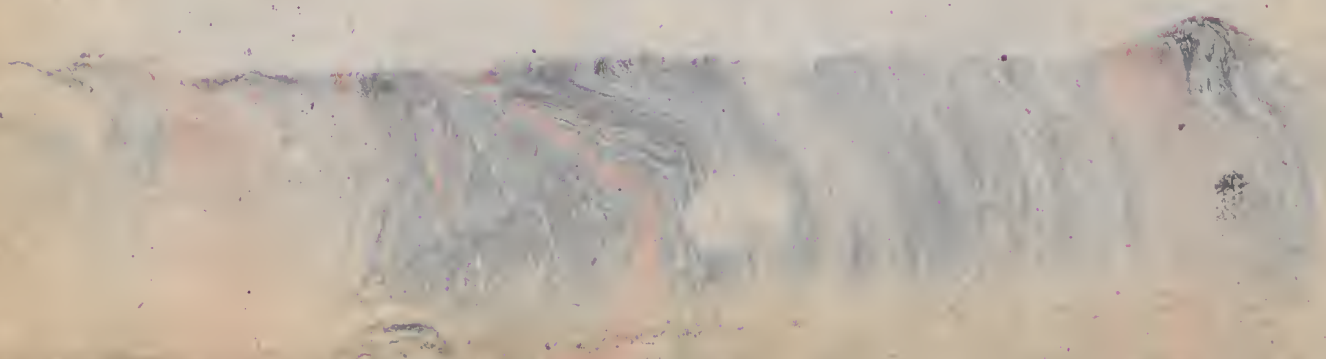






2754

196











Entered at Stationers Hall.

DESCRIPTION

OF A

RARE SCARABÆUS

FROM

*POTOSI, IN SOUTH AMERICA;*

WITH

ENGRAVED REPRESENTATIONS OF THE SAME,

COLOURED FROM NATURE.

---

BY

JOHN FRANCILLON.

---

*LONDON:*

PRINTED BY C. WHITTINGHAM.

1795.







# SCARABÆUS MACROPUS.

---

## CHARACTER GENERICUS.

*Antennæ* clavatæ capitulo fissili.

*Tibiæ* anticæ sæpius dentatæ.

LIN. SYST. NAT. p. 541.

---

## CHARACTER SPECIFICUS.

Scarabæus scutellatus viridis nitens, subtus cupreo-auratus, pectore porrecto,  
femoribus posticis crassissimis.

---

**I**NSECTUM hoc, formæ insolitæ, et eximiæ pulchritudinis,  
nullus unquam descripsit physicus. Creditur porro non aliud  
extare Specimen præter id quod depinximus, ab Ulyssipone in  
Angliam illatum; quodque generasse aiunt Potosos in America  
Auftrali. Ostendit tabula naturalem insecti magnitudinem.

# THE KANGUROO BEETLE.

---

## GENERIC CHARACTER.

*Antennæ* divided at the tip or head into several lamellæ.

*Tibiæ*, or second joints of the fore-legs, generally toothed.

---

## SPECIFIC CHARACTER.

Scutellated bright-green beetle, gold-coppery beneath; with projecting breast: the thighs of the hind-legs very thick.

---

**T**HIS highly singular and beautiful insect, which has not as yet been described by any systematic Naturalist, and of which the Specimen itself is unique, was received from Lisbon; and is supposed to be a native of Potosí, in South America. It is represented in its natural size.





