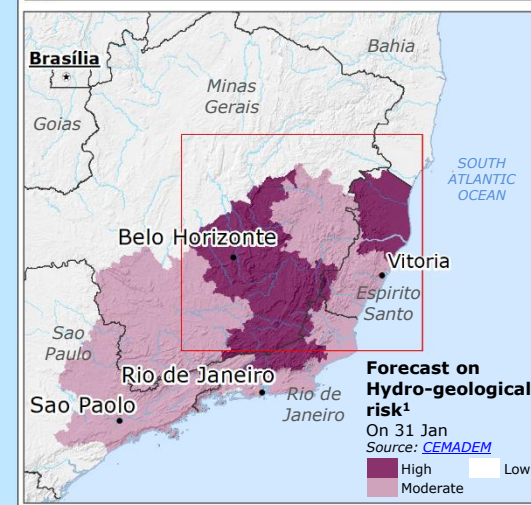
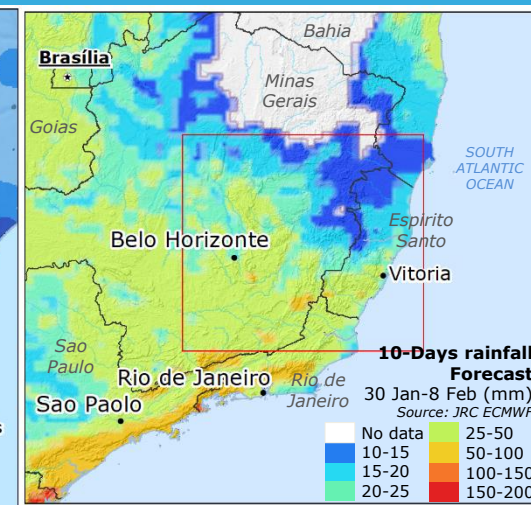
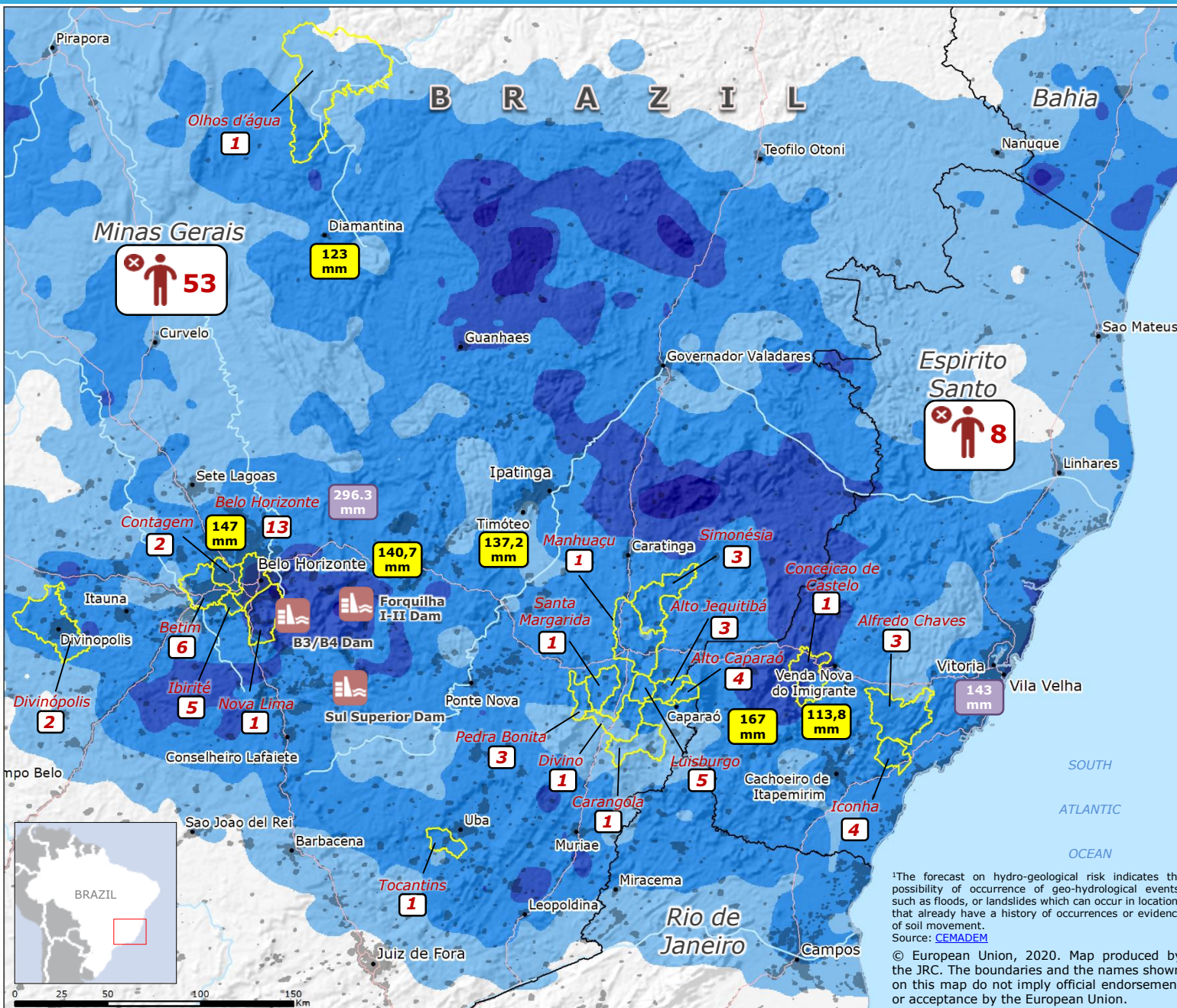


Brazil, Minas Gerais and Espirito Santo | Floods



¹The forecast on hydro-geological risk indicates the possibility of occurrence of geo-hydrological events, such as floods, or landslides which can occur in locations that already have a history of occurrences or evidence of soil movement.
Source: CEMADEM

© European Union, 2020. Map produced by the JRC. The boundaries and the names shown on this map do not imply official endorsement or acceptance by the European Union.

²Source: Defesa Civil Minas Gerais on 29 Jan, Defesa Civil Espirito Santo on 25 Jan and 29 Jan.