

GENERAL HEADQUARTERS FAR EAST COMMAND
G-4 STAFF SECTION
INFORMATION ROUTING SLIP

File No. _____ Date 17 Mar 50

SUBJECT: ¹⁷ Shanghai Evacuation

CHIEF OF STAFF
CORRESPONDENCE

Routing Date Time &
Order Initials

SECRET

Gen. Eberle _____

Col. Forsyth _____

Lt. Col. Laux _____

Executive (1) gr _____

Plans & Policy (2) SPR _____

Operations _____

Constr & R E _____

Supply _____

Petroleum _____

Personnel _____

Administration (3) M _____

1 Incls CHECKED IN: rlf

OUT: _____

SECRET

ORIGINATOR: _____

Approval _____

Concurrence _____

Information (1) (2) _____

Note & Return _____

Signature _____

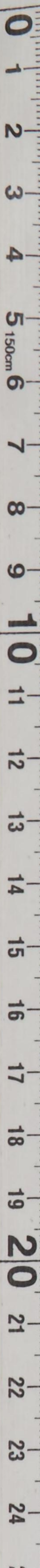
Dispatch _____

File (3) _____

JOURNAL NO: 3206

REMARKS: _____

P+P file



Handling and transmission of literal plain text of this message as correspondence of the same classification

has been authorized by the War Department in accordance with the provisions of paragraphs 16-C, 18-E, 23-A,

53-D (1) (2) (3), and 60-A (1) (2) (3) (4) (5) (6) (7) (8) (9) (10) (11) (12) (13) (14) (15) (16) (17) (18) (19) (20) (21) (22) (23) (24) (25) (26) (27) (28) (29) (30) (31) (32) (33) (34) (35) (36) (37) (38) (39) (40) (41) (42) (43) (44) (45) (46) (47) (48) (49) (50) (51) (52) (53) (54) (55) (56) (57) (58) (59) (60) (61) (62) (63) (64) (65) (66) (67) (68) (69) (70) (71) (72) (73) (74) (75) (76) (77) (78) (79) (80) (81) (82) (83) (84) (85) (86) (87) (88) (89) (90) (91) (92) (93) (94) (95) (96) (97) (98) (99) (100)

March 1946

GENERAL HEADQUARTERS
COMMANDER FOR THE ALLIED POWERS

GOING MESSAGE

SECRET
SECRET

*370-05
China*

6/7/46
EXECUTIVE
PLANS & POLICY
OPERATIONS
CONST & FAC
SUPPLY
PETROLEUM
PERSONNEL
ADMINISTRATION

TO: SOAF TOKYO JAPAN
AMCONGH SHANGHAI CHINA.....PRIORITY
INFO: DEPT OF STATE WASH DC.....PRIORITY
AMCONGH HONGKONGPRIORITY
AMCONGH TAIPEI TAIWAN.....PRIORITY
EMBASSY MANILA PI.....PRIORITY

Date: 13 Mar 50
No: 27 to Shanghai
246 to Dept
Unnum to Hongkong
7 to Taipei
30 to Manila

130447

55361
Recapitulation information regarding two LSTs being used Shanghai evacuation.

M/S MIKE Provisional Registry No.1 Yokohama series dated March 12, 1950, Master of Vessel, Marinus Olsen, American citizen, age 69 years. Total crew including Master 43. Call letters JBPY.

M/S NED Provisional Registry No.2 Yokohama series dated March 12, 1950, Master of Vessel, Allison McMillan Reid, American citizen, age 34 years. Total crew including Master 43. Call letters JBQY. - JABY

Each vessel gross tonnage 3600. Names Mike and Ned painted in white on Navy grey hulls. Diesel engine vessels which will follow standard commercial practice of calling on 500 KC and after contact adjusting frequency as required for clarity.

Each vessel will fly American and AFL house flags and have American flags 8 x 13 ft painted on both sides and 24 x 39 ft on top deck.

SEBALD

OFFICIAL:

APPROVED:
INFORMATION COPY

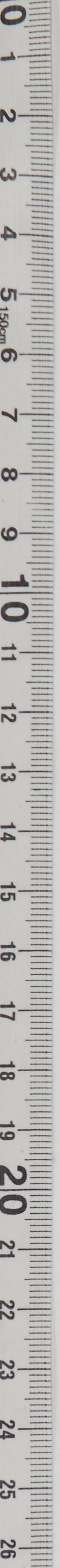
K.B.BUSH
Brigadier General, AGD
Adjutant General

W.J.SEBALD
Chief
Diplomatic Section

Info copies to:
COMNAVFE
G-4

M/R: Above information is recapitulation data obtained from COMNAVFE and AFL.
JBP 26-8143

SECRET



Handwritten notes in the top left corner, possibly including a name or date.

SECRET

...text of this message as correct-
...of the same classification
...authorized by the War Department
...in accordance with the pro-
...of paragraphs 10-C, 10-E, 10-F, 10-G, 10-H, 10-I, 10-J, 10-K, 10-L, 10-M, 10-N, 10-O, 10-P, 10-Q, 10-R, 10-S, 10-T, 10-U, 10-V, 10-W, 10-X, 10-Y, 10-Z, 10-AA, 10-AB, 10-AC, 10-AD, 10-AE, 10-AF, 10-AG, 10-AH, 10-AI, 10-AJ, 10-AK, 10-AL, 10-AM, 10-AN, 10-AO, 10-AP, 10-AQ, 10-AR, 10-AS, 10-AT, 10-AU, 10-AV, 10-AW, 10-AX, 10-AY, 10-AZ, 10-BA, 10-BB, 10-BC, 10-BD, 10-BE, 10-BF, 10-BG, 10-BH, 10-BI, 10-BJ, 10-BK, 10-BL, 10-BM, 10-BN, 10-BO, 10-BP, 10-BQ, 10-BR, 10-BS, 10-BT, 10-BU, 10-BV, 10-BW, 10-BX, 10-BY, 10-BZ, 10-CA, 10-CB, 10-CC, 10-CD, 10-CE, 10-CF, 10-CG, 10-CH, 10-CI, 10-CJ, 10-CK, 10-CL, 10-CM, 10-CN, 10-CO, 10-CP, 10-CQ, 10-CR, 10-CS, 10-CT, 10-CU, 10-CV, 10-CW, 10-CX, 10-CY, 10-CZ, 10-DA, 10-DB, 10-DC, 10-DD, 10-DE, 10-DF, 10-DG, 10-DH, 10-DI, 10-DJ, 10-DK, 10-DM, 10-DN, 10-DO, 10-DP, 10-DQ, 10-DR, 10-DS, 10-DT, 10-DU, 10-DV, 10-DW, 10-DX, 10-DY, 10-DZ, 10-EA, 10-EB, 10-EC, 10-ED, 10-EE, 10-EF, 10-EG, 10-EH, 10-EI, 10-EJ, 10-EK, 10-EL, 10-EM, 10-EN, 10-EO, 10-EP, 10-EQ, 10-ER, 10-ES, 10-ET, 10-EU, 10-EV, 10-EW, 10-EX, 10-EY, 10-EZ, 10-FA, 10-FB, 10-FC, 10-FD, 10-FE, 10-FF, 10-FG, 10-FH, 10-FI, 10-FJ, 10-FK, 10-FL, 10-FM, 10-FN, 10-FO, 10-FP, 10-FQ, 10-FR, 10-FS, 10-FT, 10-FU, 10-FV, 10-FW, 10-FX, 10-FY, 10-FZ, 10-GA, 10-GB, 10-GC, 10-GD, 10-GE, 10-GF, 10-GG, 10-GH, 10-GI, 10-GJ, 10-GK, 10-GL, 10-GM, 10-GN, 10-GO, 10-GP, 10-GQ, 10-GR, 10-GS, 10-GT, 10-GU, 10-GV, 10-GW, 10-GX, 10-GY, 10-GZ, 10-HA, 10-HB, 10-HC, 10-HD, 10-HE, 10-HF, 10-HG, 10-HH, 10-HI, 10-HJ, 10-HK, 10-HL, 10-HM, 10-HN, 10-HO, 10-HP, 10-HQ, 10-HR, 10-HS, 10-HT, 10-HU, 10-HV, 10-HW, 10-HX, 10-HY, 10-HZ, 10-IA, 10-IB, 10-IC, 10-ID, 10-IE, 10-IF, 10-IG, 10-IH, 10-II, 10-IJ, 10-IK, 10-IL, 10-IM, 10-IN, 10-IO, 10-IP, 10-IQ, 10-IR, 10-IS, 10-IT, 10-IU, 10-IV, 10-IW, 10-IX, 10-IY, 10-IZ, 10-JA, 10-JB, 10-JC, 10-JD, 10-JE, 10-JF, 10-JG, 10-JH, 10-JI, 10-JJ, 10-JK, 10-JL, 10-JM, 10-JN, 10-JO, 10-JP, 10-JQ, 10-JR, 10-JS, 10-JT, 10-JU, 10-JV, 10-JW, 10-JX, 10-JY, 10-JZ, 10-KA, 10-KB, 10-KC, 10-KD, 10-KE, 10-KF, 10-KG, 10-KH, 10-KI, 10-KJ, 10-KK, 10-KL, 10-KM, 10-KN, 10-KO, 10-KP, 10-KQ, 10-KR, 10-KS, 10-KT, 10-KU, 10-KV, 10-KW, 10-KX, 10-KY, 10-KZ, 10-LA, 10-LB, 10-LC, 10-LD, 10-LE, 10-LF, 10-LG, 10-LH, 10-LI, 10-LJ, 10-LK, 10-LL, 10-LM, 10-LN, 10-LO, 10-LP, 10-LQ, 10-LR, 10-LS, 10-LT, 10-LU, 10-LV, 10-LW, 10-LX, 10-LY, 10-LZ, 10-MA, 10-MB, 10-MC, 10-MD, 10-ME, 10-MF, 10-MG, 10-MH, 10-MI, 10-MJ, 10-MK, 10-ML, 10-MN, 10-MO, 10-MP, 10-MQ, 10-MR, 10-MS, 10-MT, 10-MU, 10-MV, 10-MW, 10-MX, 10-MY, 10-MZ, 10-NA, 10-NB, 10-NC, 10-ND, 10-NE, 10-NF, 10-NG, 10-NH, 10-NI, 10-NJ, 10-NK, 10-NL, 10-NM, 10-NN, 10-NO, 10-NP, 10-NQ, 10-NR, 10-NS, 10-NT, 10-NU, 10-NV, 10-NW, 10-NX, 10-NY, 10-NZ, 10-OA, 10-OB, 10-OC, 10-OD, 10-OE, 10-OF, 10-OG, 10-OH, 10-OI, 10-OJ, 10-OK, 10-OL, 10-OM, 10-ON, 10-OO, 10-OP, 10-OQ, 10-OR, 10-OS, 10-OT, 10-OU, 10-OV, 10-OW, 10-OX, 10-OY, 10-OZ, 10-PA, 10-PB, 10-PC, 10-PD, 10-PE, 10-PF, 10-PG, 10-PH, 10-PI, 10-PJ, 10-PK, 10-PL, 10-PM, 10-PN, 10-PO, 10-PP, 10-PQ, 10-PR, 10-PS, 10-PT, 10-PU, 10-PV, 10-PW, 10-PX, 10-PY, 10-PZ, 10-QA, 10-QB, 10-QC, 10-QD, 10-QE, 10-QF, 10-QG, 10-QH, 10-QI, 10-QJ, 10-QK, 10-QL, 10-QM, 10-QN, 10-QO, 10-QP, 10-QL, 10-QR, 10-QS, 10-QU, 10-QV, 10-QW, 10-QX, 10-QY, 10-QZ, 10-RA, 10-RB, 10-RC, 10-RD, 10-RE, 10-RF, 10-RG, 10-RH, 10-RI, 10-RJ, 10-RK, 10-RL, 10-RM, 10-RN, 10-RO, 10-RP, 10-RQ, 10-RR, 10-RS, 10-RT, 10-RU, 10-RV, 10-RW, 10-RX, 10-RY, 10-RZ, 10-SA, 10-SB, 10-SC, 10-SD, 10-SE, 10-SF, 10-SG, 10-SH, 10-SI, 10-SJ, 10-SK, 10-SL, 10-SM, 10-SN, 10-SO, 10-SP, 10-SQ, 10-SR, 10-SS, 10-ST, 10-SU, 10-SV, 10-SW, 10-SX, 10-SY, 10-SZ, 10-TA, 10-TB, 10-TC, 10-TD, 10-TE, 10-TF, 10-TG, 10-TH, 10-TI, 10-TJ, 10-TK, 10-TL, 10-TM, 10-TN, 10-TO, 10-TP, 10-TQ, 10-TR, 10-TS, 10-TU, 10-TV, 10-TW, 10-TX, 10-TY, 10-TZ, 10-UA, 10-UB, 10-UC, 10-UD, 10-UE, 10-UF, 10-UG, 10-UH, 10-UI, 10-UJ, 10-UK, 10-UL, 10-UM, 10-UN, 10-UO, 10-UP, 10-UQ, 10-UR, 10-US, 10-UT, 10-UU, 10-UV, 10-UW, 10-UX, 10-UY, 10-UZ, 10-VA, 10-VB, 10-VC, 10-VD, 10-VE, 10-VF, 10-VG, 10-VH, 10-VI, 10-VJ, 10-VK, 10-VL, 10-VM, 10-VN, 10-VO, 10-VP, 10-VQ, 10-VR, 10-VS, 10-VT, 10-VU, 10-VV, 10-VW, 10-VX, 10-VY, 10-VZ, 10-WA, 10-WB, 10-WC, 10-WD, 10-WE, 10-WF, 10-WG, 10-WH, 10-WI, 10-WJ, 10-WK, 10-WL, 10-WM, 10-WN, 10-WO, 10-WP, 10-WQ, 10-WR, 10-WS, 10-WT, 10-WU, 10-WV, 10-WW, 10-WX, 10-WY, 10-WZ, 10-XA, 10-XB, 10-XC, 10-XD, 10-XE, 10-XF, 10-XG, 10-XH, 10-XI, 10-XJ, 10-XK, 10-XL, 10-XM, 10-XN, 10-XO, 10-XP, 10-XQ, 10-XR, 10-XS, 10-XT, 10-XU, 10-XV, 10-XW, 10-XX, 10-XY, 10-XZ, 10-YA, 10-YB, 10-YC, 10-YD, 10-YE, 10-YF, 10-YG, 10-YH, 10-YI, 10-YJ, 10-YK, 10-YL, 10-YM, 10-YN, 10-YO, 10-YP, 10-YQ, 10-YR, 10-YS, 10-YT, 10-YU, 10-YV, 10-YW, 10-YX, 10-YY, 10-YZ, 10-ZA, 10-ZB, 10-ZC, 10-ZD, 10-ZE, 10-ZF, 10-ZG, 10-ZH, 10-ZI, 10-ZJ, 10-ZK, 10-ZL, 10-ZM, 10-ZN, 10-ZO, 10-ZP, 10-ZQ, 10-ZR, 10-ZS, 10-ZT, 10-ZU, 10-ZV, 10-ZW, 10-ZX, 10-ZY, 10-ZZ, 10-AA, 10-AB, 10-AC, 10-AD, 10-AE, 10-AF, 10-AG, 10-AH, 10-AI, 10-AJ, 10-AK, 10-AL, 10-AM, 10-AN, 10-AO, 10-AP, 10-AQ, 10-AR, 10-AS, 10-AT, 10-AU, 10-AV, 10-AW, 10-AX, 10-AY, 10-AZ, 10-BA, 10-BB, 10-BC, 10-BD, 10-BE, 10-BF, 10-BG, 10-BH, 10-BI, 10-BJ, 10-BK, 10-BL, 10-BM, 10-BN, 10-BO, 10-BP, 10-BQ, 10-BR, 10-BS, 10-BT, 10-BU, 10-BV, 10-BW, 10-BX, 10-BY, 10-BZ, 10-CA, 10-CB, 10-CC, 10-CD, 10-CE, 10-CF, 10-CG, 10-CH, 10-CI, 10-CJ, 10-CK, 10-CL, 10-CM, 10-CN, 10-CO, 10-CP, 10-CQ, 10-CR, 10-CS, 10-CT, 10-CU, 10-CV, 10-CW, 10-CX, 10-CY, 10-CZ, 10-DA, 10-DB, 10-DC, 10-DD, 10-DE, 10-DF, 10-DG, 10-DH, 10-DI, 10-DJ, 10-DK, 10-DM, 10-DN, 10-DO, 10-DP, 10-DQ, 10-DR, 10-DS, 10-DT, 10-DU, 10-DV, 10-DW, 10-DX, 10-DY, 10-DZ, 10-EA, 10-EB, 10-EC, 10-ED, 10-EE, 10-EF, 10-EG, 10-EH, 10-EI, 10-EJ, 10-EK, 10-EL, 10-EM, 10-EN, 10-EO, 10-EP, 10-EQ, 10-ER, 10-ES, 10-ET, 10-EU, 10-EV, 10-EW, 10-EX, 10-EY, 10-EZ, 10-FA, 10-FB, 10-FC, 10-FD, 10-FE, 10-FF, 10-FG, 10-FH, 10-FI, 10-FJ, 10-FK, 10-FL, 10-FM, 10-FN, 10-FO, 10-FP, 10-FQ, 10-FR, 10-FS, 10-FT, 10-FU, 10-FV, 10-FW, 10-FX, 10-FY, 10-FZ, 10-GA, 10-GB, 10-GC, 10-GD, 10-GE, 10-GF, 10-GG, 10-GH, 10-GI, 10-GJ, 10-GK, 10-GL, 10-GM, 10-GN, 10-GO, 10-GP, 10-GQ, 10-GR, 10-GS, 10-GT, 10-GU, 10-GV, 10-GW, 10-GX, 10-GY, 10-GZ, 10-HA, 10-HB, 10-HC, 10-HD, 10-HE, 10-HF, 10-HG, 10-HH, 10-HI, 10-HJ, 10-HK, 10-HL, 10-HM, 10-HN, 10-HO, 10-HP, 10-HQ, 10-HR, 10-HS, 10-HT, 10-HU, 10-HV, 10-HW, 10-HX, 10-HY, 10-HZ, 10-IA, 10-IB, 10-IC, 10-ID, 10-IE, 10-IF, 10-IG, 10-IH, 10-II, 10-IJ, 10-IK, 10-IL, 10-IM, 10-IN, 10-IO, 10-IP, 10-IQ, 10-IR, 10-IS, 10-IT, 10-IU, 10-IV, 10-IW, 10-IX, 10-IY, 10-IZ, 10-JA, 10-JB, 10-JC, 10-JD, 10-JE, 10-JF, 10-JG, 10-JH, 10-JI, 10-JJ, 10-JK, 10-JL, 10-JM, 10-JN, 10-JO, 10-JP, 10-JQ, 10-JR, 10-JS, 10-JT, 10-JU, 10-JV, 10-JW, 10-JX, 10-JY, 10-JZ, 10-KA, 10-KB, 10-KC, 10-KD, 10-KE, 10-KF, 10-KG, 10-KH, 10-KI, 10-KJ, 10-KK, 10-KL, 10-KM, 10-KN, 10-KO, 10-KP, 10-KQ, 10-KR, 10-KS, 10-KT, 10-KU, 10-KV, 10-KW, 10-KX, 10-KY, 10-KZ, 10-LA, 10-LB, 10-LC, 10-LD, 10-LE, 10-LF, 10-LG, 10-LH, 10-LI, 10-LJ, 10-LK, 10-LL, 10-LM, 10-LN, 10-LO, 10-LP, 10-LQ, 10-LR, 10-LS, 10-LT, 10-LU, 10-LV, 10-LW, 10-LX, 10-LY, 10-LZ, 10-MA, 10-MB, 10-MC, 10-MD, 10-ME, 10-MF, 10-MG, 10-MH, 10-MI, 10-MJ, 10-MK, 10-ML, 10-MN, 10-MO, 10-MP, 10-MQ, 10-MR, 10-MS, 10-MT, 10-MU, 10-MV, 10-MW, 10-MX, 10-MY, 10-MZ, 10-NA, 10-NB, 10-NC, 10-ND, 10-NE, 10-NF, 10-NG, 10-NH, 10-NI, 10-NJ, 10-NK, 10-NL, 10-NM, 10-NN, 10-NO, 10-NP, 10-NQ, 10-NR, 10-NS, 10-NT, 10-NU, 10-NV, 10-NW, 10-NX, 10-NY, 10-NZ, 10-OA, 10-OB, 10-OC, 10-OD, 10-OE, 10-OF, 10-OG, 10-OH, 10-OI, 10-OJ, 10-OK, 10-OL, 10-OM, 10-ON, 10-OO, 10-OP, 10-OQ, 10-OR, 10-OS, 10-OT, 10-OU, 10-OV, 10-OW, 10-OX, 10-OY, 10-OZ, 10-PA, 10-PB, 10-PC, 10-PD, 10-PE, 10-PF, 10-PG, 10-PH, 10-PI, 10-PJ, 10-PK, 10-PL, 10-PM, 10-PN, 10-PO, 10-PP, 10-PQ, 10-PR, 10-PS, 10-PT, 10-PU, 10-PV, 10-PW, 10-PX, 10-PY, 10-PZ, 10-QA, 10-QB, 10-QC, 10-QD, 10-QE, 10-QF, 10-QG, 10-QH, 10-QI, 10-QJ, 10-QK, 10-QL, 10-QM, 10-QN, 10-QO, 10-QP, 10-QQ, 10-QR, 10-QS, 10-QU, 10-QV, 10-QW, 10-QX, 10-QY, 10-QZ, 10-RA, 10-RB, 10-RC, 10-RD, 10-RE, 10-RF, 10-RG, 10-RH, 10-RI, 10-RJ, 10-RK, 10-RL, 10-RM, 10-RN, 10-RO, 10-RP, 10-RQ, 10-RR, 10-RS, 10-RT, 10-RU, 10-RV, 10-RW, 10-RX, 10-RY, 10-RZ, 10-SA, 10-SB, 10-SC, 10-SD, 10-SE, 10-SF, 10-SG, 10-SH, 10-SI, 10-SJ, 10-SK, 10-SL, 10-SM, 10-SN, 10-SO, 10-SP, 10-SQ, 10-SR, 10-SS, 10-ST, 10-SU, 10-SV, 10-SW, 10-SX, 10-SY, 10-SZ, 10-TA, 10-TB, 10-TC, 10-TD, 10-TE, 10-TF, 10-TG, 10-TH, 10-TI, 10-TJ, 10-TK, 10-TL, 10-TM, 10-TN, 10-TO, 10-TP, 10-TQ, 10-TR, 10-TS, 10-TU, 10-TV, 10-TW, 10-TX, 10-TY, 10-TZ, 10-UA, 10-UB, 10-UC, 10-UD, 10-UE, 10-UF, 10-UG, 10-UH, 10-UI, 10-UJ, 10-UK, 10-UL, 10-UM, 10-UN, 10-UO, 10-UP, 10-UQ, 10-UR, 10-US, 10-UT, 10-UU, 10-UV, 10-UW, 10-UX, 10-UY, 10-UZ, 10-VA, 10-VB, 10-VC, 10-VD, 10-VE, 10-VF, 10-VG, 10-VH, 10-VI, 10-VJ, 10-VK, 10-VL, 10-VM, 10-VN, 10-VO, 10-VP, 10-VQ, 10-VR, 10-VS, 10-VT, 10-VU, 10-VV, 10-VW, 10-VX, 10-VY, 10-VZ, 10-WA, 10-WB, 10-WC, 10-WD, 10-WE, 10-WF, 10-WG, 10-WH, 10-WI, 10-WJ, 10-WK, 10-WL, 10-WM, 10-WN, 10-WO, 10-WP, 10-WQ, 10-WR, 10-WS, 10-WT, 10-WU, 10-WV, 10-WW, 10-WX, 10-WY, 10-WZ, 10-XA, 10-XB, 10-XC, 10-XD, 10-XE, 10-XF, 10-XG, 10-XH, 10-XI, 10-XJ, 10-XK, 10-XL, 10-XM, 10-XN, 10-XO, 10-XP, 10-XQ, 10-XR, 10-XS, 10-XT, 10-XU, 10-XV, 10-XW, 10-XX, 10-XY, 10-XZ, 10-YA, 10-YB, 10-YC, 10-YD, 10-YE, 10-YF, 10-YG, 10-YH, 10-YI, 10-YJ, 10-YK, 10-YL, 10-YM, 10-YN, 10-YO, 10-YP, 10-YQ, 10-YR, 10-YS, 10-YT, 10-YU, 10-YV, 10-YW, 10-YX, 10-YY, 10-YZ, 10-ZA, 10-ZB, 10-ZC, 10-ZD, 10-ZE, 10-ZF, 10-ZG, 10-ZH, 10-ZI, 10-ZJ, 10-ZK, 10-ZL, 10-ZM, 10-ZN, 10-ZO, 10-ZP, 10-ZQ, 10-ZR, 10-ZS, 10-ZT, 10-ZU, 10-ZV, 10-ZW, 10-ZX, 10-ZY, 10-ZZ

Date: 13 Mar 50
No:
27 to Bangkok
24 to Day
26 to Bangkok
7 to Tokyo
30 to Manila

AMEMBOSY MANILA II.....PRIORITY
DEPT OF STATE WASH DC.....PRIORITY
AMEMBOSY HONOLULU.....PRIORITY
AMEMBOSY TAIPEI TAIWAN.....PRIORITY
AMEMBOSY MANILA II.....PRIORITY

180447

Reclassification information regarding two lists being used in the event.

THE FIRST PROVISIONAL REGISTER NO. 1 TAIPEI AREA dated March 12, 1950, Master of Vessel, KANSAI OIL, American citizen, age 67 years. Total crew including Master 23. Call letters JBY.

THE SECOND PROVISIONAL REGISTER NO. 2 TAIPEI AREA dated March 12, 1950, Master of Vessel, ALISON KELLER said, American citizen, age 34 years. Total crew including Master 23. Call letters JBY.

Each vessel gross tonnage 2800. Names like and not printed in white on dark grey hull. Diesel engine vessels which will follow standard commercial practice of calling on 200 KZ and other contact adjusting frequency as required for clarity.

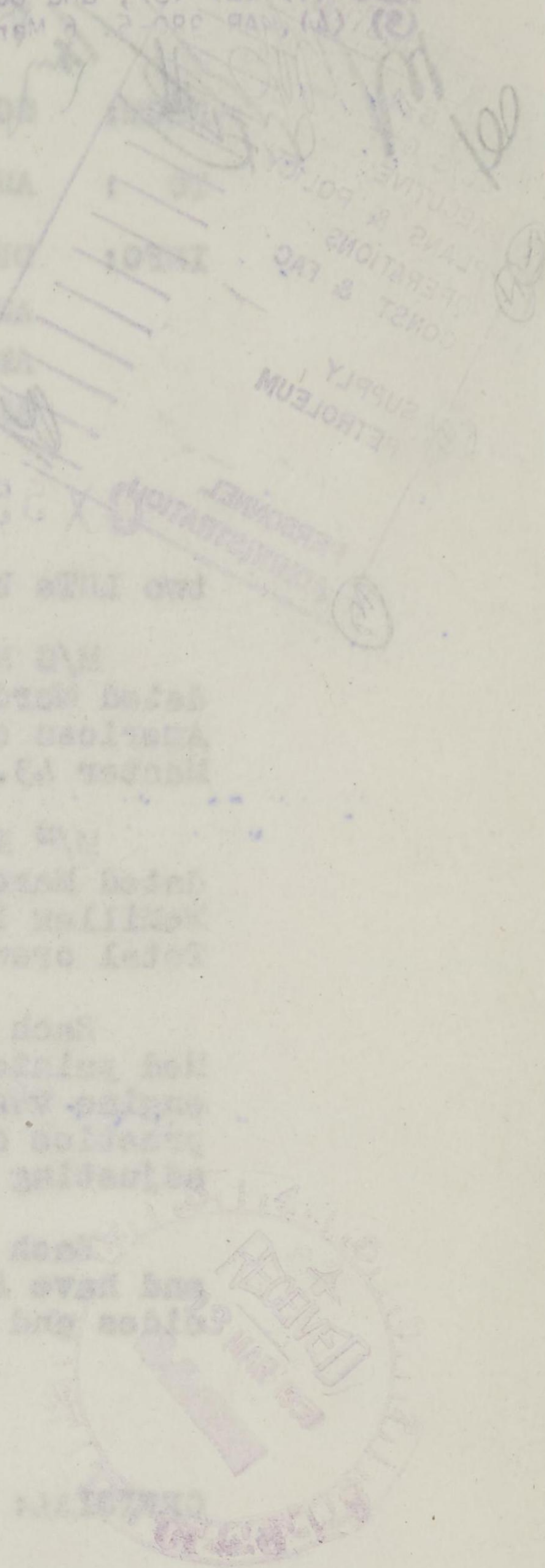
Each vessel will fly American and All Stars flags and have American flags 8 x 12 ft painted on both sides and 24 x 36 ft on top deck.

INFORMATION COPY

W. V. BRADY
Chief
Diplomatic Section
The above information is for information only and is not to be disseminated outside the Department of State.

W. V. BRADY
Adjutant General
The above information is for information only and is not to be disseminated outside the Department of State.

SECRET



GENERAL HEADQUARTERS
SUPREME COMMANDER FOR THE ALLIED POWERS

370.05
China

OUTGOING MESSAGE DS/WJB/JBP/ejn

FROM: SCAP TOKYO JAPAN SECRET

DATE: 13 Mar 50

TO : DEPT OF STATE WASH DC.....EMERGENCY

No: 251 to Depstate

C-55363

130703

Shanghai's NIACT 1067 March 12 and Yokohama's 45 March 12 MIKE and BND ready sail Yokohama 10 a.m. Tuesday March 14 local time. With Dept's approval vessels will depart on schedule and proceed Nagasaki there to await Department's final instructions to be dispatched to Tokyo thence thru AFL to masters of vessels. Urgent reply requested.

G-4

①	G-4 ROUTING	
	A C/S G-4	
	D AC/S G-4	
	EXECUTIVE	
	PLANS & POLICY	
	OPERATIONS	
	CONST & FAC	
	SUPPLY	
	PETROLEUM	
	PERSONNEL	
③	ADMINISTRATION	

Handwritten: K.B. BUSH
Brigadier General, AGD
Adjutant General

Handwritten: Info copies to:
G-4
COMNAVFE

SEBALD

APPROVED:

Handwritten: [Signature]

K. J. SEBALD
Chief
Diplomatic Section

M/R: Dispatched after discussion with COMNAVFE and AFL.

JBP 26-8143

handling and transmission of liberal plain text of this message as correspondence of the same classification has been authorized by the War Department in accordance with the provisions of paragraphs 16-C, 18-E, 53-A, 53-D, (1) (2) (3), and 60-A (1) (2) (3) (4), AR 380-5, 6 March 1946

INFORMATION COPY

SECRET



Handwritten: 35002
Cuma

GENERAL INVESTIGATIVE
DIVISION OF THE FBI

TO : DEPT OF STATE WASH DC...
FROM: BUREAU TOKYO JAPAN
SECRET

DATE: 13 MAR 50
NO: 251 to 260

C-25363

Shanghai's KANG 1007 March 12 and
Tosonnan's AS March 12 MKX and WWS ready call Yokohama
10 a.m. Tuesday March 14 local time. With Dept's
approval vessels will depart on schedule and proceed
homeward there to await Department's final instructions
to be dispatched to Tokyo through the A1 to control of
vessels. Urgent reply requested.

G-4



Administrative routing table with handwritten initials and names.

WWS Disposition of
disposition with
COMNAV and A1.



Handwritten text: This copy is for...
has been authorized by the War Depart-
ment in accordance with the pro-
visions of paragraphs 10-C, 18-E, 23-A,
23-D (1) (2) (3), and 60-A (1) (2) (3) (A), AR 380-2, 6 March 1946

INFORMATION COPY

SECRET

2

GENERAL HEADQUARTERS, FAR EAST COMMAND
ADJUTANT GENERAL'S OFFICE
RADIO AND CABLE CENTER

INCOMING MESSAGE

G-4 ROUTING	
A C/S G-4	
D AC/S G-4	
① EXEPTS/bdh	
PLANS & POLICY	
② OPERATIONS	
CONST & FAC	
SUPPLY	
PETROLEUM	
PERSONNEL	
③ ADMINISTRATION	K

UNCLASSIFIED
DEFERRED

FROM : ARMAT SHANGHAI CHINA
TO : CINCFE TOKYO JAPAN
NR : 126

370.05

Request arrangements for temporary quarters and onward transportation to ZI for fol DA, DAF pers, incl HH effects and baggage, being evacuated from China:

DA:

Brig Gen Robert H Soule, Mrs Soule, Miss Soule and 1 small dog;

Maj Maynard G Moyer, Mrs Moyer and baby daughter;

DAC:

Mrs Esther R Wood;

DAF:

Maj Michael A Luckey; Sgt Glenn Martin, Mrs Martin.
ETD Shanghai 20 Mar.

SOULE

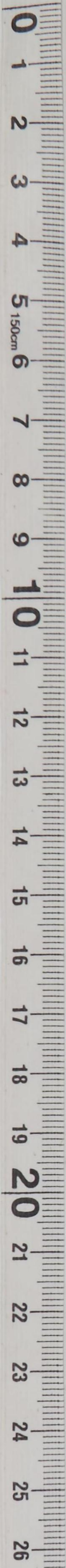
ACTION : G-1

INFORMATION : COMMANDER IN CHIEF, CHIEF OF STAFF, G-4, AG, HQ
COMMANDANT, TRANS

63634

DEFERRED
UNCLASSIFIED

TOO : 130248 Z
MCN : AUC 21/13



GENERAL HEADQUARTERS, FAR EAST COMMAND
ADJUTANT GENERAL'S OFFICE
RADIO AND CABLE CENTER

*370.05
China*

INCOMING MESSAGE

SECRET
EMERGENCY

EMERGENCY

G-4 ROUTING	
A C/S G-4	
D AC/S G-4	
EXECUTIVE	
PLANS & POLICY	
OPERATIONS	
13 Mar 50	
SUPPLY	
PETROLEUM	
PERSONNEL	
ADMINISTRATION	

FROM : STATE DEPT WASH DC

TO : SCAP (USPOLAD) TOKYO JAPAN

INFO : CSUSA WASH DC

NR : 131110 Z (STATE SVC MAR 13, 5 AM ^①SGD ACHESON)
 (RELAYS FROM HONG KONG SGD RANKIN-SENT NIACT SHANGHAI
 81, REPEATED DEPT 488, MANILA 45, TOKYO 19, TAIPEI 83,
 MAR 13, NOON) (BOOK MESSAGE)

Re DEPTTEL to Shanghai 420, Tokyo 229, Manila 408,
 Hong Kong 482, Taipei 208.

APL Hong Kong will furnish 2 pilots William Sudbury,
 British, and Hans Adolf Johnsen, Norwegian, both members
 Shanghai Pilots Association. They depart Hong Kong for Tokyo
 Mar 13 PAA Flight 6, ETA 5 AM Mar 14.

Masters names requested reference telegram not available
 Hong Kong, can be obtained from Goodwin Manila or Gabrielson
 Tokyo.

NO SIG

ACTION : DIPLOMATIC

INFORMATION : COMMANDER IN CHIEF, CHIEF OF STAFF, G-1, G-2,
G-3, G-4, JSPOG, TRANS

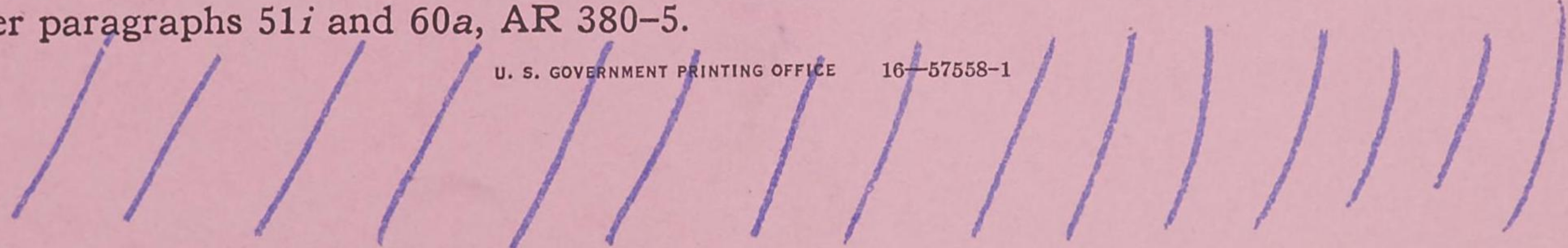
NOTE : This msg passed by AG Radio Unit via Courier to
COMNAVFE TOKYO JAPAN for info. (13 Mar 50)

63794 **EMERGENCY** " TOO : 131110 Z
MCN : 57897

SECRET

Consult Crypto-Center before declassifying.
Paraphrase not required. Handle as correspondence of
classification carried hereon per paragraphs 17 a (1) 39
(2), and 41 c (2)(3), AR 380-5, 15 November 1949

Paraphrase not required. Handle as correspondence of classification carried hereon
per paragraphs 51i and 60a, AR 380-5.



GENERAL HEADQUARTERS, FAR EAST COMMAND
ADJUTANT GENERAL'S OFFICE
RADIO AND CABLE CENTER

*370.05
China*

INCOMING MESSAGE

SECRET
EMERGENCY

WG/ewj

G-1 ROYAL	
A C/S G-4	
D AC/S G-4	
EXECUTIVE	
PLANS & POLICY	
OPERATIONS	
CONST & FAC	
SUPPLY	
PETROLEUM	
PERSONNEL	
ADMINISTRATION	

13 Mar 50

"EMERGENCY"

FROM : STATE DEPT WASH DC
 TO : SCAP (USPOLAD FOR SEBALD) TOKYO JAPAN
 INFO : CSUSA WASH DC
 NR : 131040 Z (STATE SVC MAR 13, 5 AM SGD ACHESON)
 (RELAYS FROM HONG KONG SGD RANKIN-SENT DEPT 489,
 MAR 13, 1 PM RPTD USPOLAD TOKYO 20 MANILA 46)

CONGEN issuing Japanese clearances William Sudbury and Hans Adolf Johnsen (MYTEL 19 to Tokyo Mar 13, repeated Dept 488, Manila 45) pilots for LST evacuation boats. These 2 men must depart latest Hong Kong for Tokyo afternoon today and we therefore unable obtain customary SCAP clearances in time. In view emergency CONGEN has issued Japanese entry permits and would appreciate your facilitating entry.

NO SIG

ACTION : DIPLOMATIC

INFORMATION : COMMANDER IN CHIEF, CHIEF OF STAFF, G-1, G-2, G-3, G-4, JSPOG, TRANS

NOTE : This msg passed by AG Radio Unit via Courier to COMNAVFE TOKYO JAPAN for info. (13 Mar 50)

63785

"EMERGENCY"

EMERGENCY

TOO : 131040 Z
MCN : 57896

SECRET

Consult Crypto-Center before declassifying.
 Paraphrase not required. Handle as correspondence of classification carried hereon per paragraphs 17 a (1) (2), and 41 c (2)(3), AR 380-5, 15 November 1949.

Paraphrase not required. Handle as correspondence of classification carried hereon per paragraphs 51i and 60a, AR 380-5.

GENERAL HEADQUARTERS, FAR EAST COMMAND
ADJUTANT GENERAL'S OFFICE
RADIO AND CABLE CENTER

*370.05
China*

INCOMING MESSAGE

Secret
ROUTINE

PTS/cmk

13 Mar 50

G-4 ROUTINE	
AC/S G-4	
EXECUTIVE	<i>#</i>
PLANS & POLICY	
OPERATIONS	
CONST & FAC	
SUPPLY	
PETROLEUM	
ADMINISTRATION	<i>#</i>

FROM : COMNAVFE TOKYO JAPAN

TO : CNO WASH DC

INFO : COM 7TH FLEET PEARL HARBO TH, CINCPAC OAHU TH, CINCFC
TOKYO JAPAN, RDO WASH DC

NR : 130125 Z

Your 111913 Z NOTAL Turnover Inspection made 12th with representative COMNAVFE state and APL condition satisfactory for emergency evacuation. Receipts for QO 42 and QO 43 ex Navy LSTs 587 and 456 signed simultaneously by CONGEN Yokohama and Gabrielson APL. Vessels now designated and registered as Mike and Ned respectively. Expect Japanese passenger instructors accompany to port departure Japan but will not leave Japanese waters.

NO SIG

INFORMATION : COMMANDER IN CHIEF, CHIEF OF STAFF, G-1, G-2, G-3, G-4, AG, DIPLOMATIC, TRANS

NOTE : This msg passed via Courier to CINCFC for info by COMNAVFE under DTG 130125 Z.

63629

ROUTINE
Secret

TOO : 130125 Z
MCN : NONE

Consult Crypto Center before declassifying. Paraphrase not required. Handle as correspondence of classification carried hereon per paragraphs 17 a (1) (2), and 41 c (2) (3), AR 380-5, 15 November 1949.

Paraphrase not required. Handle as correspondence of classification carried hereon per paragraphs 51z and 60a, AR 380-5.

GENERAL HEADQUARTERS, FAR EAST COMMAND
ADJUTANT GENERAL'S OFFICE
RADIO AND CABLE CENTER

G-4 ROUTING	
A C/S G-4	<i>ms</i>
D AC/S G-4	<i>ms</i>
EXECUTIVE	<i>ms</i>
PLANS & POLICY	
OPERATIONS	
CONST & FAC	
SUPPLY	
PETROLEUM	
PERSONNEL ADMINISTRATION	<i>a</i>

*370.05
China*

INCOMING MESSAGE

Secret
PRIORITY

JA/mjo

13 Mar 50

FROM : STATE DEPT WASH DC

TO : SCAP (USPOLAD) TOKYO JAPAN

NR : 121550 Z (MAR 12, 10 AM) (SENT DEPT NIACT 1066 REPTD
MANILA 51 HONG KONG 127 TAIPEI 244) (DEPT PASS TOKYO
NIACT 96 FROM SHANGHAI MAR 12, 8 PM) (BOOK MESSAGE)

Re DEPTTEL 410 Mar 10 and 420 Mar 11. Tokyo TEL 22 to Shai Mar 10. Since only two LST's now available for evacuation CONGEN believes most feasible plan to handle movement with least delay to ship as follows:

"Upon arrival LST's Shai load immed one LST with all heavy baggage for passengers embarking on Gordon. In this LST 175 passengers could embark in dormitories giving preference women and children.

"Embark immed thereafter on second LST 500 or 600 passengers with hand luggage only since no heavy baggage ship could take this number. This second LST would deliver passengers to Gordon load inward passengers and return Shai for balance of outward passengers. During this return voyage the LST with heavy baggage would be discharging into Gordon, a time consuming operation, but which should be finished when LST with second batch passengers arrives. Upon embarking these passengers Gordon sails for Yokohama. Both LST's could then return to Shai with stevedores who loaded Gordon and pick up Govt cargo and other household effects moving out on Bills of Lading and also remaining passengers since APL Allocation 1201 places on Gordon insufficient to meet demand for passenger space. Apl and CONGEN believe this plan should be accepted immed and modifications if necessary must be our discretion as no

63566
(over)
PRIORITY
Secret

Consult Crypto-Center before declassifying.
Paraphrase not required. Handle as correspondence of classification carried hereon per paragraphs 17 a (1) (2), and 41 c (2) (3), AR 380-5, dtd 15 November 1949.

Paraphrase not required. Handle as correspondence of classification carried hereon per paragraphs 51i and 60a, AR 380-5.

Secret
PRIORITY

FROM : STATE DEPT NR : 121550 Z 13 MAR 50 CONT'D

Time remains further exchange views. CONGEN bears in mind that all Amers official and others have first priority. (Fleming, McConaughy)."

ACHESON

ACTION : DIPLOMATIC

INFORMATION : COMMANDER IN CHIEF, CHIEF OF STAFF, G-1, G-2, G-3, G-4, JSPOG, TRANS

63566

PRIORITY

Secret
-2-

TOO : 121550 Z
MCN : 57876



GENERAL HEADQUARTERS, FAR EAST COMMAND
ADJUTANT GENERAL'S OFFICE
RADIO AND CABLE CENTER

INCOMING MESSAGE

*370.05
China*

Secret
PRIORITY

G-4 ROUTING

ASST ADJ G-4	
EXECUTIVE	<input checked="" type="checkbox"/>
PLANS & POLICY	
OPERATIONS	
CONST & FAC	
PETROLEUM	
PERSONNEL	
ADMINISTRATION	<input checked="" type="checkbox"/>

PTS/bdh

13 Mar 50

FROM : CNO WASH DC

TO : COMNAVFE TOKYO JAPAN

INFO : COM 7TH FLT PEARL HARBOR TH, CINCPACFLT OAHU TH, FDO WASH DC

NR : 111913 Z

CNO 082321. Conduct acceptance and turn over inspection of LSTs for Navy Dept. Reposses number desired for evacuation not to exceed 4 and transfer to POLAD SCAP as representative of State Dept. Currently State anticipates only 2 LSTs can be accepted. Responsibility for possibel liable or damage claims in connection with operation these vessels will be decided by Dept.

NO SIG

INFORMATION : COMMANDER IN CHIEF, CHIEF OF STAFF, G-1, G 2, G-3, G 4, AG, DIPLOMATIC, TRANS

NOTE : This msg passed via Courier to CINCFE for info by COMNAVFE under DTG 111913 Z.

63659

PRIORITY
Secret

TOO : 111913 Z
MCN : NONE

Consult Crypto-Center before declassifying.
Paraphrase not required. Handle as correspondence of classification carried hereon per paragraphs 17 a (1) (2), and 41 c (2) (3), AR 380-5, 15 November 1949.
Paraphrase not required. Handle as correspondence of classification carried hereon per paragraphs 51 and 60a, AR 380-5.

GENERAL HEADQUARTERS, FAR EAST COMMAND
ADJUTANT GENERAL'S OFFICE
RADIO AND CABLE CENTER

G-4 ROUTING	
C/S	<i>[initials]</i>
D AC/S G-4	<i>[initials]</i>
EXECUTIVE	<i>[initials]</i>
PLANS & POLICY	<i>[initials]</i>
OPERATIONS	<i>[initials]</i>
COMST & FAC	<i>[initials]</i>
SUPPLY	<i>[initials]</i>
PETROLEUM	<i>[initials]</i>
PERSONNEL	<i>[initials]</i>
ADMINISTRATION	<i>[initials]</i>

INCOMING MESSAGE

Secret
PRIORITY

9-4
3770:05 Chung

FROM : STATE DEPT WASH DC

TO : SCAP (USPOLAD) TOKYO JAPAN

NR : 121525 Z (MAR 12, 9 AM) (SENT DEPT NIACT 1067 REPTD
MANILA 52 HONG KONG 128 TAIPEI 245) (DEPT PASS TOKYO
NIACT 97 FROM SHANGHAI MAR 12, 7 PM)

"Re DEPTTEL 420 Mar 11. APL Shai already applied for entry LST's but entry permit not issued pending receipt further details which now can be provided on basis info receive today.

"Downs APL rep will visit Fgn Trade Bureau earliest on morning Mar 13 giving them info to date and request entry permits be issued. Will also ask for safe conduct thru North Channel.

"While firm Commie commitment to allow entry of LST's may be deferred until after they are scheduled to sail from Yokohama CONGEN recommends that they sail on schedule anyway in absence further word from US. Both CONGEN and APL reasonably satisfied this regime does not intend to hinder entry or departure of LST's. They have never yet interfered with entry of merchant ships to this port; they are on record as favoring our early departure from China; they have put much work into issuance of exit permits which would be meaningless if no ship to be allowed; and their refusal to allow exit of Shai foreigners via Tientsin, Tsingtao and Canton puts added pressure on them to sanction departure by sea from Shai. CONGEN estimates only slight risk will be taken if LST's leave Yokohama before entry permit granted and it is a calculated risk which must be taken if plans is adhered to.

"As to publicity, CONGEN recommends short announcement over VOA on, but not before, Tuesday morning, Mar 14, Shai time.

(over)
PRIORITY
63567

Secret
Consult Crypto-Center before declassifying.
Paraphrase not required. Handle as correspondence of classification carried hereon per paragraphs 17 a (1) (2) and 41 c (2) (3). AR 380-5, dtd 15 November 1949. per paragraphs 51i and 60a, AR 380-5.

Secret
PRIORITY

FROM: STATE DEPT NR: 121525 Z 13 MAR 50 CONT'B

CONGEN will suggest possible phrasing for announcement by priority tel immed after Downs visit to Fgn Trade Bureau tomorrow morning. (Fleming, McConaughy)."

ACHESON

ACTION : DIPLOMATIC

INFORMATION : COMMANDER IN CHIEF, CHIEF OF STAFF, G-1, G-2, G-3, G-4, JSPOG, TRANS

63567

PRIOTIRY

TOO : 121525 Z
MCN : 57877

Secret

SECRET

G-4 ROUTING

A C/S G-4	
D AC/S G-4	
EXECUTIVE	
PLANS & POLICY	
OPERATIONS	
CONST & FAC	
SUPPLY	<i>me</i>
PETROLEUM	
PERSONNEL	
ADMINISTRATION	<i>me</i>

Lt Col Akin 26-6055

*370.05
China*

Supplies for LST's

Med
Sig
QM

13 March 1950

(1) 1. This constitutes confirmation of verbal requests, on above subject, issued 11 March 1950.

a. For Med: Emergency medical supplies, based on strength of 82 crew members for 14 days and 1600 passengers for one day, to be loaded aboard two LST's on the afternoon of Sunday, 12 March 1950. Such supplies to be receipted for by representative of American President Lines. After completion of project, APL to be billed for reimbursement, at rates based on existing directives, for net quantities consumed, i.e., gross quantities issued less those items accepted by Med for return to stock.

b. For Sig: Total quantities requested in Check Note of 11 March 1950, subject as above, are to be reduced by 50%. Project has been amended to provide use of two (2) LST's only. Four (4) radio sets and four (4) Signal lamps to be loaded aboard two (2) LST's on the afternoon of 12 March 50.

c. For QM: Total quantities of expendables requested in Check Note of 10 March 1950, subject as above, will be delivered to two (2) only LST's. Total quantities of non-expendables will be reduced by 50%. Each LST will be provided with the original quantities of non-expendables designated for each LST, however, project has been amended to utilize only two (2) LST's rather than the four (4) originally considered. Deliveries to be made aboard vessels during afternoon of 12 March 1950.

mpur
----- G. L. E. -----

MEMO FOR RECORD:

SP GD AKA/EHM/ra
13th March 50

Subject equipment and supplies are required for project involving evacuation of personnel from Shanghai. For background data see C/N to QM, same subj, 10 March 50.



AKA *AKA* 26-6055

EHM *me* 26-6043 (Div Chief)

Supply
2993

SECRET

G-4

GENERAL HEADQUARTERS, FAR EAST COMMAND
ADJUTANT GENERAL'S OFFICE
RADIO AND CABLE CENTER

G-4 ROUTING

A C/S G-4	_____
D AC/S G-4	_____
EXECUTIVE	_____
PLANS & POLICY	_____
OPERATIONS	_____
CONST & FAC	_____
SUPPLY	_____
PETROLEUM	_____
PERSONNEL	_____
ADMINISTRATION	_____

*370.05
China*

INCOMING MESSAGE

Priority
PRIORITY

Action
BLT/rdd

ACTION COPY

12 Mar 50

FROM : DA (GSGFO) WASH DC
TO : CINCFE TOKYO JAPAN
INFO : COMNAVFE TOKYO JAPAN, COM 7TH TSK FLT (AT SEA), CINCPAC PEARL HARBOR TH
NR : WX 80498

Navy Dept dispatching instructions COMNAVFE to act as Navy representative repossess soonest 4 LSTs and deliver to custody POLAD Tokyo in turn APL.
 Re part 3 WX 80494 this msg ur authority deliver vessels to custody COMNAVFE.

NO SIG

ACTION : G-4

INFORMATION : COMMANDER IN CHIEF, CHIEF OF STAFF, G-1, G-2, G-3, AG, DIPLOMATIC, TRANS

ACTION COPY

63497

PRIORITY

**TOO : 111915 Z
MCN : 57861**

Consult Crypto-Center before declassifying.
Paraphrase not required. Handle as correspondence of classification carried hereon per paragraphs 17 a (1) (2) and 41 c (2) (3), AR 380-5, 15 Nov 49.

~~Paraphrase not required. Handle as correspondence of classification carried hereon per paragraphs 51i and 60a, AR 380-5.~~

SECRET

MS

GD P&P ATH/bs

MEMORANDUM FOR RECORD:

SUBJECT: Delivery of 4 LSTs to POLAD Tokyo

1. CNO msg 111913 Z Mar 50 directed COMNAVFE to conduct acceptance and turnover inspection of LST's for Navy Dept.
2. COMNAVFE 130125 Z Mar 50 informed CNO turnover inspection satisfactorily completed 12 Mar 50.
3. SCAP has supervised the use of the Navy SCAJAP Lst's thru COMNAVFE (SCAJAP). SCAJAP has been the actual custodian of these vessels.
4. CINCPAC msgs CX 55199, 3 Mar 50 (repeated as CX 55205, 4 Mar 50) and CX 55300, 10 Mar 50, and the memorandum agreement between American President Lines and the United States of America 11 Mar 50 contain the necessary authority for delivery of the vessels.
5. No further action required on this msg.
6. Within policy.
7. Completes action on G-4 Journal No. 2987.

A.T.H. *ATH*
 G.D. *GD*
 F.L.R. *FLR*

G-4 File Copy

14 MAR 1950

FLR
P.P.
 2987

SECRET

G-4 File Copy



A C/S G-4
D AC/S G-4
EXECUTIVE
PLANS & POLIC
OPERATIONS
CONST & FAC
SUPPLY
PETROLEUM

①
②

SECRET

:WJS:JBP:hh

12 March 1950
26 to Shanghai
No. 6 to Taipei

370-25
Chino

③

SONNEL
INFO: AMEMBASSY TAIPEI TAIWAN.....PRIORITY

120727

EX 55358

Additional data regarding two vessels being used Shanghai evacuation: M/S MIKE Provisional Registry No. 1 Yokohama Series dated March 12, 1950, Master of Vessel, Marinus OLSEN, American citizen, age sixty-nine years. Total crew including Master forty-three.

M/S NED Provisional Registry No. 2 Yokohama Series dated March 12, 1950, Master of Vessel, Allison McMillan REID, American citizen, age thirty-four years. Total crew including Master forty-three.

SEBALD

OFFICIAL:

APPROVED:

K. B. BUSH
Brigadier General, AGD
Adjutant General

W. J. SEBALD
Chief
Diplomatic Section

W/R: Above radio furnishes Shanghai and Taipei with additional information on vessels, masters and crew, in connection with evacuation from Shanghai and is based on information supplied by American President Lines, Japan Office, and American Consulate, Yokohama.

JBPilcher 26-8143

Copies to COMNAVFE
C-4

handling and transmission of... plain text of this message as correspondence or the same classification has been authorized by the War Department in accordance with the provisions of paragraphs 16-C, 18-E, 53-A, 53-D, (1) (2) (3), and 60-A (1) (2) (3) (4), AR 380-5, 6 March 1946

2-C-V-5
DIB-260
WVB
J

SECRET

INFORMATION COPY 5

G-4

370.05
China

GENERAL HEADQUARTERS

FAR EAST COMMAND

SECRET
CHECK SHEET

Lt Col DeYoung, 26-6041

(Do not remove from attached sheets)

Telecon between GHQ, FEC, and D/A re Evacuation of Shanghai by Dept of State and provision of Army Supplies for this Task

File No:

Subject:

(DA TT-3160)

Date:

12-MAR 1950

Note No.

From: G-4

To: C/S

1

1. Telecon was held at 2200 hours, Tokyo time, 11 Mar 50, with the Dept of Army on the above subject. Conferees were as follows:

Conferees - Dept of Army

Colonel W. W. Moore, Office Chief of Transportation

Lt. Col. M. F. Gilchrist, G-3

Lt. Col. L. G. Hanley, G-4

D/A Item 1:

Because of budgetary limitations State desires to limit operation to 2 LST's if possible. However, formal request to Dept of Defense asks that 4 LST's be made available. In order to meet emergency, desire other 2 LST's remain in standby status ready for use if needed.

D/A Item 2:

Re your item 1 you are correct. WX-80494 grants authority requested in your 55300.

D/A Item 3:

Re your item 2: Correct.

Conferees - GHQ, FEC

Colonel F. L. Rash, G-4, P&P

Lt. Col. G.O. DeYoung, Jr., G-4, P&P

FEC Item 1:

Just handed your radio WX-80494 which we interpret as authority to issue supplies to American President Lines under conditions our radio 55300.

FEC Item 2:

Will hold other 2 LST's in standby status in Japanese waters. Probably at Kagoshima. Understand crews being flown here for 2 LST's only.

FEC Item 3:

All in readiness here. Supplies will be loaded in next 12 hours. State, Army, Navy, and American President Lines have worked cooperatively together. In our opinion, barring unpredictable happenings,

SECRET

RECD SGS Date 3/14/91 Time 12:14

REC VEO FORM NO 31

RECEIVED LIBRARY SERVICES
OFFICE OF THE SECRETARY
DEFENSE DEPARTMENT
WASHINGTON, D.C. 20301
DATE: 3/14/91

RE FROM 2: COMSEC

DIV FROM 2:

RECEIVED IN APR 22 1950
REF: MX-80484
RE FROM 2: COL

DIV FROM 2:

RECEIVED IN APR 22 1950
REF: MX-80484
RE FROM 2: COL

DIV FROM 2:

LT COL G. C. HANCOCK, G-4
LT COL M. B. GILBERT, G-2

CHIEF OF TRANSPORTATION
COLONEL M. M. MOORE, OFFICE

COMSEC - DEPT OF ARMY

TO: COMSEC

FROM: DEPT OF ARMY ON THE ABOVE SUBJECT. COMSEC MEMO TO
J. DEFECON WAS HELD AT 2300 HOURS, TOKYO TIME, 11 MAR 50.

NO
NOTE

FROM: G-4

TO: O/S

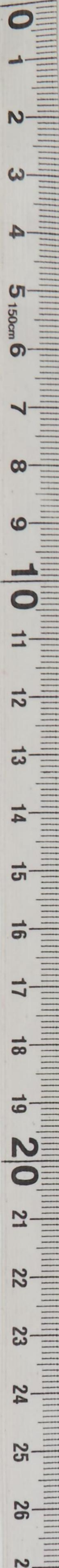
DATE: (DA 11-3180)

FILE NO:

SUBJECT:

ATTENTION OF ARMY SUBMITTER FOR THIS TASK
ACTION OF TRANSPORT DEPT OF STATE AND PRO-
DEFCON BETWEEN GHO, REC, AND DVA RE PLASCH-
(Do not remove from attached sheets)

CHECK SHEET
DEFENSE DEPARTMENT
GENERAL HEADQUARTERS



GENERAL HEADQUARTERS
FAR EAST COMMAND
SECRET
CHECK SHEET

Lt Col DeYoung, 26-6041

(Do not remove from attached sheets)

Telecon between GHQ, FEC, and D/A re Evacuation of Shanghai by Dept of State and provision of Army Supplies for this Task

File No:

Subject:

Date: (DA TT-3160)

Note No.

From: G-4

To: C/S

1
(Cont'd)

the rendezvous will be kept with GORDON on 20 March.

D/A Item 4:

Will pass your item 3 to State and all concerned. State has expressed appreciation for assistance being rendered by Armed Services.

2. Dept of Army message WX-80494, 11 Mar 50, which is referred to in FEC Item 1 is attached. This message authorizes issue of Army Supplies under conditions and as requested by GHQ, FEC.

1 Incl
DA Msg
80494, 11 Mar 50

[Handwritten Signature]
2985
-----G.L.E.-----

NOTED
[Handwritten Signature]
BY C/S
[Handwritten Signature]

GENERAL HEADQUARTERS
FAR EAST COMMAND
CHECK SHEET

Lt Col DeYoung, 26-6041

(Do not remove from attached sheets)
Telecon between GHO, FEC, and D/A re Evacu-
ation of Shanghai by Dept of State and pro-
vision of Army Supplies for this Task
Subject: (DA TT-3180)

File No:

Note No.

I

(Cont'd)

From: G-4

To: G/S

the rendezvous will be kept
with GORDON on 20 March.

D/A Item 4:

Will pass your item 3 to
State and all concerned.
State has expressed apprecia-
tion for assistance being
rendered by Armed Services.

2. Dept of Army message WX-80494, 11 Mar 50, which is
referred to in FEC Item 1 is attached. This message authorizes
issue of Army Supplies under conditions and as requested by
GHO, FEC.

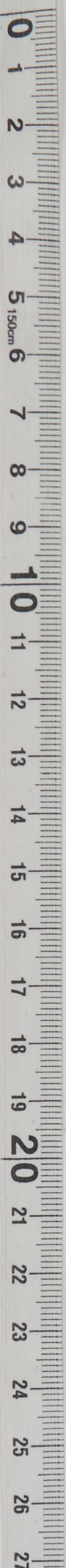
1 Incl

DA Mag

80494, 11 Mar 50

2888

G.L.H.



GENERAL HEADQUARTERS, FAR EAST COMMAND
ADJUTANT GENERAL'S OFFICE
RADIO AND CABLE CENTER

G-4 ROUTING

C/S G-4	
AC/S G-4	
EXECUTIVE	
PLANS & POLICY	<input checked="" type="checkbox"/>
OPERATIONS	
CONST & FAC	
SUPPLY	
PETROLEUM	
PERSONNEL	
ADMINISTRATION	<input checked="" type="checkbox"/>

ORUP
INCOMING MESSAGE

ELT/rea

Secret
PRIORITY

11 Mar 50

FROM : DA (CSGPO) WASH DC

TO : CINCPAC TOKYO JAPAN

INFO : CINCPAC OAHU TH, COM 7TH FLT PEARL HARBOR TH, COMNAVFE
TOKYO JAPAN

NR : WX 80494

REUR CX 55300 of 10 Mar 50. This msg in 3 parts.

Part 1. Planned asst by Army ur commandant on terms

Part 3 URAD.

Part 2. CNO concurs that Navy provide life saving equipment, necessary navigational equipment and emergency sanitary facilities on loan basis with provision equipment be returned in good condition or reimbursement made. Installation costs emergency facilities and pol to be provided on reimb basis.

Part 3. Date and details for LSTS to pass from ur control follow soonest but actions contemplated Parts 1 and 2 above nevertheless auth in interim.

ACTION : G-4,

NO SIG

INFORMATION : COMMANDER IN CHIEF, CHIEF OF STAFF, G-1, G-2, G-3,
AG, DIPLOMATIC, TRANS

63427

PRIORITY

TOO : 110143 Z

MCN : 57839

Secret

Consult Crypto-Center before declassifying.

Paraphrase not required. Handle as correspondence of classification carried hereon per paragraphs 17 a (1) (2), and 41 c (2) (3), AR 380-5, 15 Nov 49.

Paraphrase not required. Handle as correspondence of classification carried hereon per paragraphs 51i and 60a, AR 380-5.

Incl 1

SECRET

GENERAL HEADQUARTERS

FAR EAST COMMAND

CHECK SHEET Col. Rash 26-6455

(Do not remove from attached sheets)

File No:

Subject: Shanghai Evacuation

Note No.

From: G-4

To: C/S

Date: 1 MAR 1950

1

1. Mr. Gabrielson, (Tokyo Representative of American President Lines) has been in telephonic communication with his San Francisco office, and furnished G-4 (Col. Rash) the following details concerning the evacuation of Shanghai:

a. There has been no change in the rendezvous date for LSTs to meet the APL liner GORDON. The exact time is 1000 hours, 20 March, off Saddle Island.

b. State Department has authorized only two LSTs instead of four as previously planned. Code names for the two LSTs selected will be MIKE and NED.

c. Crews have been recruited in the U. S. and are being flown to Haneda so as to arrive aboard one PAL plane and one PANAM plane early 13 March.

2. It is planned to sail from Yokohama just as soon as crews are aboard, which appears at this time to be before noon 13 March.

3. G-4 intends to direct QM and Med to deliver to APL and load aboard LSTs prior to 1800, 12 March. It is anticipated that authorization for delivery of these items to APL, which was requested from D/A in our radio CX 55300, 10 March 50, will have been received by that time.

4. Approval is requested to deliver the supplies to APL, as indicated above, in the event this authorization from D/A is not received as anticipated.

1 Incl
Radio CX 55300
10 Mar 50

G. L. E.

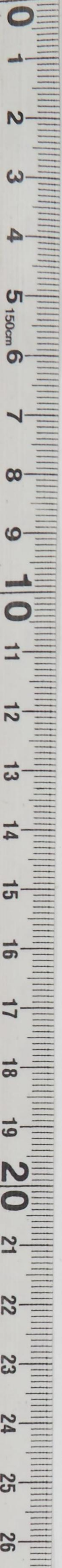
2937

CHIEF OF STAFF
APPROVED
INITIALS

*but ask for a telegram
of confirmation*

3-11
5 F

SECRET



SECRET
GENERAL HEADQUARTERS
FAR EAST COMMAND

CHECK SHEET

(Do not remove from attached sheets)

Subject: Shanghai Evacuation

File No.:

Date: 1 MAR 1950

From: G-4

To: G/S

1. Mr. Gabrielson, (Tokyo Representative of American President Lines) has been in telephonic communication with the San Francisco office, and furnished G-4 (Col. Beach) the following details concerning the evacuation of Shanghai:

a. There has been no change in the rendezvous date for LSTA to meet the APL liner GORDON. The exact time is 1000 hours, 30 March, off Shagha Island.

b. State Department has authorized only two LSTA instead of four as previously planned. Code names for the two LSTA selected will be NINA and NEM.

c. Crews have been recruited in the U. S. and are being flown to Manila so as to arrive aboard one PAL plane and one HAWAII plane early 13 March.

d. It is planned to sail from Yokohama just as soon as crews are aboard which appears at this time to be before noon 13 March.

e. G-4 intends to direct CM and Med to deliver to APL and load aboard LSTA prior to 1800, 12 March. It is anticipated that authorization for delivery of these items to APL, which was requested from D/A in our radio CX 33300, 10 March 50, will have been received by that time.

f. Approval is requested to deliver the supplies to APL, as indicated above, in the event the authorization from D/A is not received as anticipated.

I Incl
Radio CX 33300
10 Mar 50

Note No. 1



CHIEF OF STAFF
APPROVED
[Signature]

SECRET

3-11-50

GENERAL HEADQUARTERS
FAR EAST COMMAND

OUTGOING MESSAGE

GD P&P GD/ajs
10 March 1950

Secret

100055

FROM: CINCFE TOKYO JAPAN

TO : DA WASH DC PRIORITY

INFO: COMNAVFE TOKYO JAPAN PRIORITY (COURIER)

ex 55300 CINCPAC PEARL HARBOR TH. PRIORITY

For CSGPO. Urmsg WX 80331, 8 March 50. Subject is Shanghai Evacuation. This msg in three parts.

Part 1. Availability non-Japanese crews. Non-Japanese crew members unavailable in Japan.

Part 2. Planned Navy Assistance to APL in Japan. Navy will make available not to exceed 4 LSTs in Yokohama, without crews, cleaned and equipped for emergency passenger service. Navy providing lifesaving equipment, necessary navigational equipment and installing emergency sanitary facilities. Navy also providing fuel on reimbursable basis.

Part 3. Planned Army assistance to APL Japan. APL representative Japan has requested, and Army plans to make available to APL subject to DA authorization cots, bedding, mess equipment, subsistence, and such other non-luxury stores and supplies as are necessary for welfare of passengers and crews while aboard LSTs. Non-expendable supplies will be furnished on loan basis, with proviso that supplies will be returned in same condition as when issued with reimbursement required in event these conditions are not met. Expendable supplies, including subsistence and medical supplies, will be issued to APL on reimbursable basis. Authorization for issue of supplies to APL requested soonest.

OFFICIAL:

APPROVED:

K. B. BUSH
Brigadier General, AGD
Adjutant General

J.L.R
FOR G. L. EBERLE
Major General, General Staff Corps
Assistant Chief of Staff, G-4

Copies furnished:

- CinC
- C/S
- G-1
- G-2
- G-3
- AG
- DS
- Trans

M/R: Reference is made to G-4 C/N to C/S, subj: Shanghai Evacuation, 9 March 50, and M/R thereto. Inst radio approved as amended by C/S 9 Mar 50. Completes action on G-4 Journal No. 2857.

Secret

Approved by C/S 9 Mar 50.

Incl 1

GENERAL HEADQUARTERS FAR EAST COMMAND
G-4 STAFF SECTION
INFORMATION ROUTING SLIP

File No. _____ Date 13 March 1950
17

SUBJECT: Telecon between GHQ and DA re

Evac of Shanghai by Dept of State and
provusion of Army Supplies for this Task

Routing Date Time &
Order Initials

Gen. Eberle _____

Col. Forsyth _____ *Fy*

Lt. Col. Laux _____

Executive (1) _____

Plans & Policy (2) FR _____

Operations _____

Constr & R E _____

Supply _____

Petroleum _____

Personnel _____

Administration (3) _____

Incls CHECKED IN: pfs

OUT: _____

ORIGINATOR: _____

Approval _____

Concurrence _____

Information (1&2) _____

Note & Return _____

Signature _____

Dispatch _____

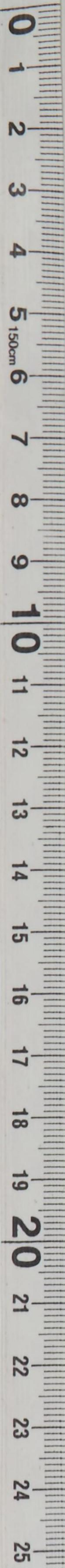
File (3) Shanghai file

3006

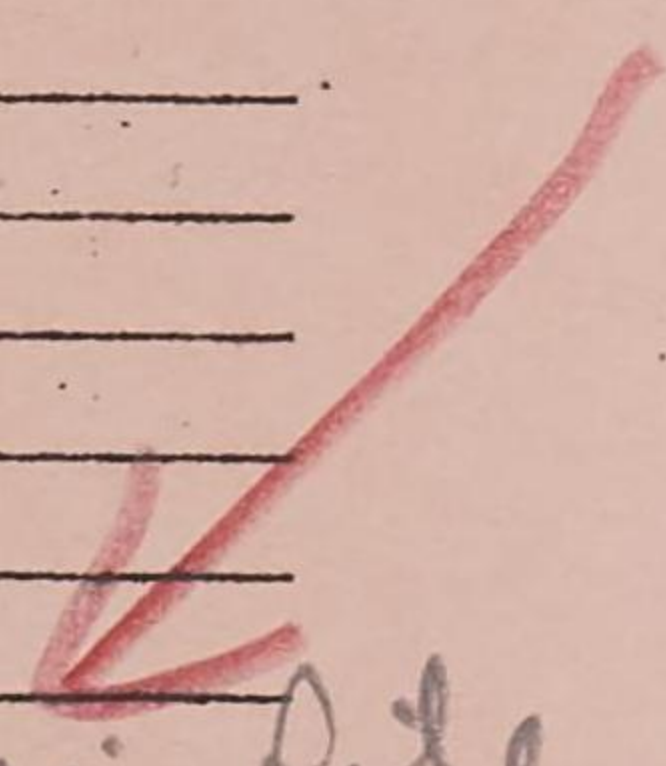
JOURNAL NO: _____

SECRET

REMARKS: _____



SECRET
CHIEF OF STAFF
CORRESPONDENCE



GENERAL HEADQUARTERS, FAR EAST COMMAND
ADJUTANT GENERAL'S OFFICE
RADIO AND CABLE CENTER

*370-05
China*

INCOMING MESSAGE

Confidential
ROUTINE

ELT/rjs

12 Mar 50

G-4	ROUTINE
A C/S G-4	
D AC/S G-4	
EXECUTIVE	
PLANS & POLICY	
OPERATIONS	
CONST & FAC	
SUPPLY	
PETROLEUM	
PERSONNEL	
ADMINISTRATION	

FROM : STATE DEPT WASH DC

TO : SCAP (USPOLAD) TOKYO JAPAN

NR : 112109 Z (SENT DEPT 1065 MAR 11, 6 PM REPEATED MANILA 50, HONG KONG 126) (DEPT PASS TOKYO 95 FROM SHANGHAI) (MAR 11, 2 PM) (BOOK MSG)

"Downs of APL informs me Goodwin APL Manila today notified him by telephone that APL had announced no inward passengers on Gordon. Goodwin gave no reason or explanation for this flat assertion. In view Nationalist clearances for inward passengers (Taipei's 53 to Shanghai, sent Dept 377, Manila 21, Mar 8) and Communist acquiescence by granting entry permits, Consulate General at loss to explain this announcement. In absence instructions to contrary after MYTEL 866, Feb 28, repeated Manila 30, Hong Kong 93, Taipei 2159 have proceeded on assumption in-passengers cleared. Many plans of American, other fgn nationals based on entry replacements. Assume APL basing announcement on misconception Nationalist clearance for Gordon last Sep. Urgently rqst departmental clearance and approach to APL to arrange inward passage subject to physical possibility since many replacements on way by air from Britain and Europe to Hong Kong in time to catch Gordon.

"DEPTEL 410, Mar 10 just received would indicate Dept approves in principle. Pls advise APL make every effort accommodate these urgent needs. Signed McConaughy."

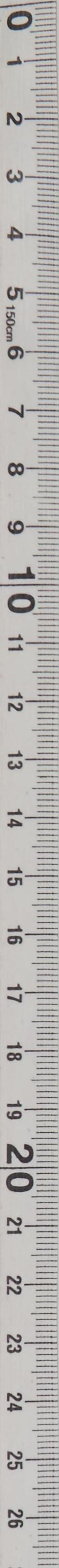
ACTION : DIPLOMATIC ACHESON

INFORMATION : COMMANDER IN CHIEF, CHIEF OF STAFF, G-1, G-2, G-3, G-4, TRANS, COMNAVFE

NOTE : Sig Comm Cen states this msg delayed due to service.

63521 ROUTINE TOO : 112109 Z
MCN : 57863

Consult Crypto-Center before declassifying.
 Paraphrase not required. Handle as correspondence of classification carried hereon per paragraphs 51i and 60a, AR 380-5, 15 Nov 49.



GENERAL HEADQUARTERS, FAR EAST COMMAND
ADJUTANT GENERAL'S OFFICE
RADIO AND CABLE CENTER

*370.05
China*

INCOMING MESSAGE

Confidential
PRIORITY

G-4	
A C/S G-4	
D AC/S G-4	
EXECUTIVE	
ANS & POLICY	
OPERATIONS	
ELT/rjs & FAC	
SUPPLY	
PETROLEUM	
12 Mar 50	
PERSONNEL	
ADMINISTRATION	<i>←</i>

FROM : STATE DEPT WASH DC
 TO : SCAP (USPOLAD) TOKYO JAPAN
 NR : 120520 Z (MAR 11, 12 MIDNITE) (FOL SENT SHANGHAI 34
 RPTD DEPT 735 HONG KONG 46 TAIPAI 23) (DEPT PASS
 PRIORITY YOKOHAMA UNN USPOLAD TOKYO 30 FROM MANILA
 MAR 12, 11 PM)

"Names 2 LST Masters are Marinus Olsen and also
 McHillan Reid. Re DEPTEL sent Shanghai 420 rptd Tokyo 229,
 Manila 408, Hong Kong 482, Taipei 208 Mar 11, 1950. Sgd Cowen."

ACHESON

ACTION: DIPLOMATIC

INFORMATION: COMMANDER IN CHIEF, CHIEF OF STAFF, G-1, G-2, G-3,
G-4, COMNAVFE

63518

PRIORITY

TOO : 120520 Z
MCN : 57871

Consult Crypto-Center before declassifying.
 Paraphrase not required. Handle as correspondence of
 classification carried hereon per paragraphs 17 a (1)
 (2), and 41 c (2) (3), AR 380-5, 15 Nov 49.
 Paraphrase not required. Handle as correspondence of classification carried hereon
 per paragraphs 51i and 60a, AR 380-5.

370.05
China

G-4 ROUTING

A C/S G-4 _____

D AC/S G-4 _____

EXECUTIVE _____

PLANS & POLICY *ap* _____

OPERATIONS _____

CONST & FAC _____

SUPPLY G-4 _____

PETROLEUM _____

ADMINISTRATION _____

SECRET

Lt Col DeYoung, 26-6041

Telecon between GHQ, FEC, and D/A re Evacuation of Shanghai by Dept of State and provision of Army Supplies for this Task
(DA TT-3160)
C/S

12 MAR 1950

1. Telecon was held at 2200 hours, Tokyo time, 11 Mar 50, with the Dept of Army on the above subject. Confererees were as follows:

Confererees - Dept of Army

Colonel W. W. Moore, Office Chief of Transportation

Lt. Col. M. F. Gilchrist, G-3

Lt. Col. L. G. Hanley, G-4

Confererees - GHQ, FEC

Colonel F. L. Rash, G-4, P&P

Lt. Col. G.O. DeYoung, Jr., G-4, P&P

D/A Item 1:

Because of budgetary limitations State desires to limit operation to 2 LST's if possible. However, formal request to Dept of Defense asks that 4 LST's be made available. In order to meet emergency, desire other 2 LST's remain in standby status ready for use if needed.

FEC Item 1:

Just handed your radio WX-80494 which we interpret as authority to issue supplies to American President Lines under conditions our radio 55300.

D/A Item 2:

Re your item 1 you are correct. WX-80494 grants authority requested in your 55300.

FEC Item 2:

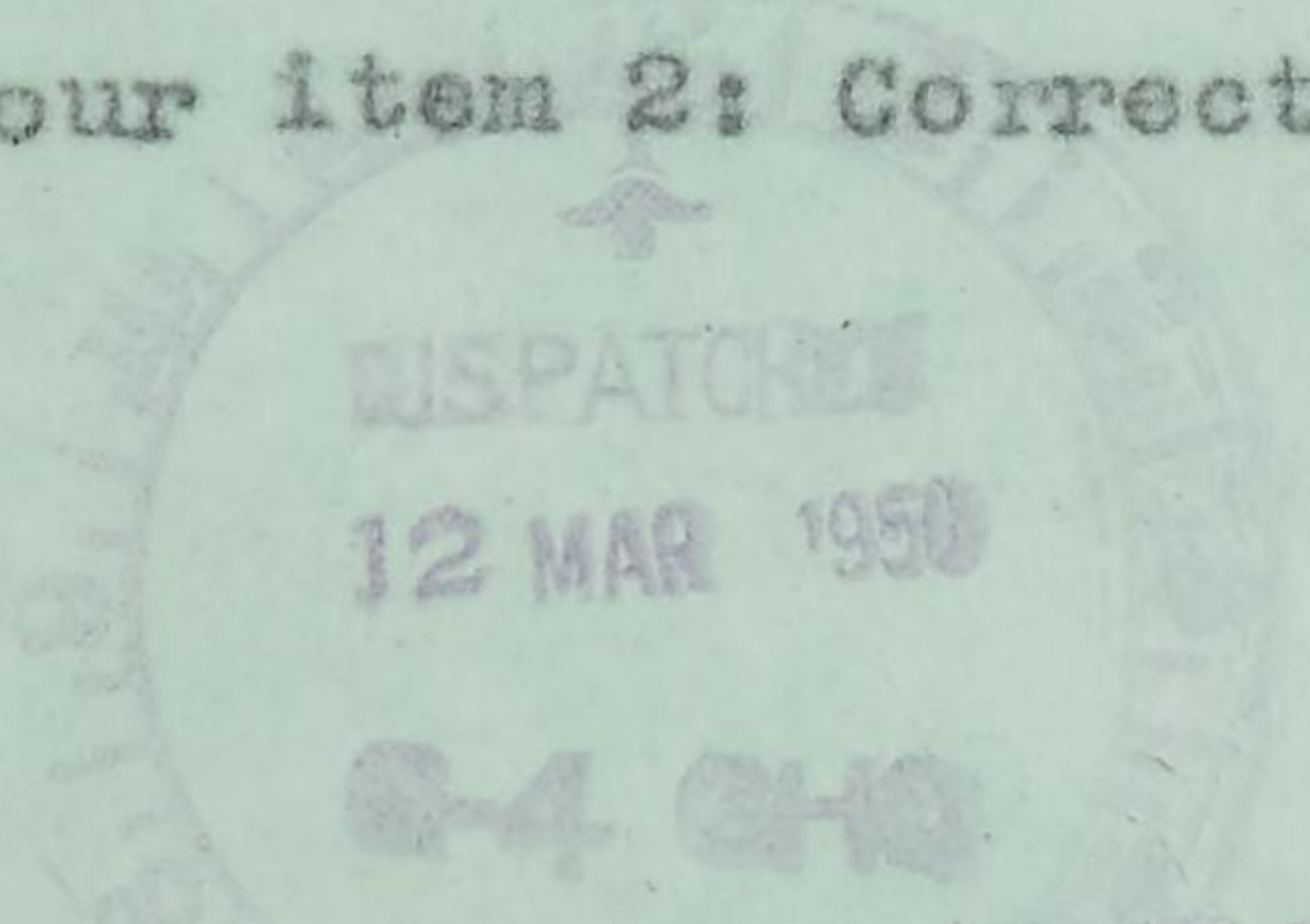
Will hold other 2 LST's in standby status in Japanese waters. Probably at Kagoshima. Understand crews being flown here for 2 LST's only.

D/A Item 3:

Re your item 2: Correct.

FEC Item 3:

All in readiness here. Supplies will be loaded in next 12 hours. State, Army, Navy, and American President Lines have worked cooperatively together. In our opinion barring unpredictable happenings



G-4 ADMIN FILE COPY

SECRET

ⓔ P&P
2985
2983

SECRET

Lt Col DeYoung, 26-6041

Telecon between GHQ, FEC, and D/A re Evacuation of Shanghai by Dept of State and provision of Army Supplies for this Task
(DA TT-3160)

G-4

C/S

the rendezvous will be kept with GORDON on 20 March.

1
(Cont'd)

D/A Item 4:

Will pass your item 3 to State and all concerned. State has expressed appreciation for assistance being rendered by Armed Services.

2. Dept of Army message WX-80494, 11 Mar 50, which is referred to in FEC Item 1 is attached. This message authorizes issue of Army Supplies under conditions and as requested by GHQ, FEC.

1 Incl
DA Msg
80494, 11 Mar 50



-----G.L.E.-----
GD P&P GD/she
12 March 1950

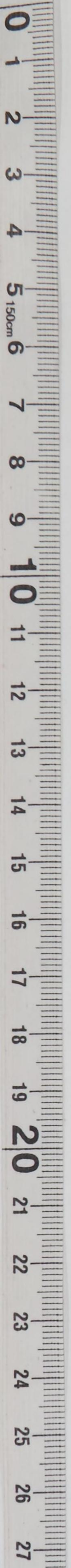
MEMORANDUM FOR RECORD

Subject: As above

1. C/N 1, G-4 to C/S, subject as above, gives names of conferees and decoded discussion between D/A and GHQ, FEC conferees re Shanghai evacuation and furnishing of Army supplies incident thereto, all of which is self-explanatory.
2. Within policy. Initiated action.
3. Completes action *on 2985 and 2983.*

G.D. _____

F.L.R. _____



DECLASSIFIED

Authority NND 975029

DA-1

REF NO 380

BECAUSE OF BUDGETARY LIMITATIONS STATE
DESIRES TO LIMIT OPERATION TO 2 LST'S
IF POSSIBLE. HOWEVER FORMAL REQUEST TO
DEPT OF DEFENSE ASKS THAT 4 LSTS BE MADE
AVAILABLE . INORDER TO MEET EMERGENCY
DESIRE OTHER TWO LSTS REMAIN IN STANDBY
STATUS READY FOR USE IF NEEDED.

(END ^{DA 1)} ~~YXW:8973:57~~

INCOMING

PARAPHRASE NOT REQUIRED
HANDLE AS
CORRESPONDENCE PER PARAGR
16-C, (CHANGE 5) 18-C, 53-
53-D (1) (2) (3) AND 60-A
(2) (3) (4), 15 AUGUST 1946
AR 380-5

SECRET

DECLASSIFIED
Authority NND 975029

INCOMING
INCOMING

SECRET

DA-2

REF 380

RE UR ITEM 1 YOU ARE CORRECT WX-80494

GRANTS AUTHORITY REQUESTED IN UR 55300.

(END DA-2)

D

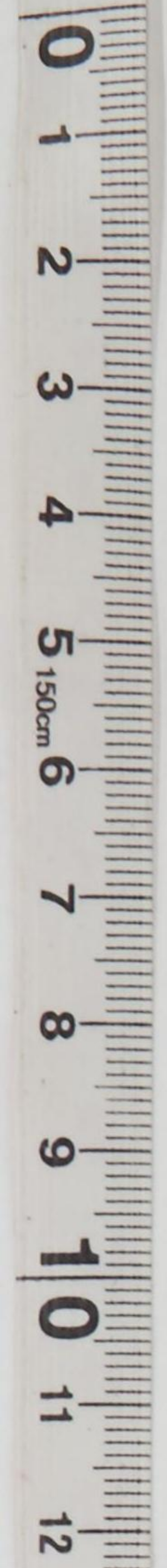
DA-3

REF 380

RE UR ITEM 2-- CORRECT.

(END DA-3)

PARAPHRASE NOT REQUIRED
HANDLE AS
CORRESPONDENCE PER PARAGRAPH
16-C, (CHANGE 5) 18-C, 53-A,
53-D (1) (2) (3) AND 60-A (1)
(2) (3) (4), 15 AUGUST 1946
AR 380-5



DECLASSIFIED

Authority NND 975029

DO U HV ANYTHING FURTHER?

PLS RPT FIRST LINE

DA-4

REF 380

WILL PASS ~~S~~UR ITEM 3 MG STATE AND ALL
CONCERNED. STATE HAS EXPRESSED APPRECIATION
FOR ASSISTANCE BEING RENDERED BY ARMED
SERVICES.

(END DA-4)

NOTHING FURTHER
HERE

SECRET

INCOMING

PARAPHRASE NOT REQUIRED
HANDLE AS
CORRESPONDENCE PER PARAGRAPH
16-C, (CHANGE 5) 18-C, 53-A,
53-D (1) (2) (3) AND 60-A (1)
(2) (3) (4), 15 AUGUST 1946
AR 380-5

DECLASSIFIED

Authority NND 975029

FEC ITEM 3:

ALL IN READINESS HERE. SUPPLIES
WILL BE LOADED IN NEXT 12 HOURS.
STATE, ARMY, NAVY AND APL HAVE WORKED
COOPERATIVELY TOGETHER. IN OUR OPINION
BARRING UNPREDICTABLE HAPPENINGS THE
RENDEZVOUZ WILL BE KEPT WITH GORDON
ON 20 MARCH.
(END OF ITEM 3)

OUTGOING

SECRET

PARAPHRASE NOT REQUIRED
HANDLE AS
CORRESPONDENCE PER PARAGRAPH
16-C, (CHANGE 5) 18-C, 53-A,
53-D (1) (2) (3) AND 60-A (1)
(2) (3) (4), 15 AUGUST 1946
-AR 380-5

SECRET

OUTGOING

TELCONFERENCE: UEPCN V UAPCN 111311Z MAR 50 TT 316

PRESENT HERE (TOKYO):

COL F.L. RASH G-4

LT COL G.O. DEYOUNG G-4

SUBJECT: EVACUATION OF SHANGHAI BY
DEPT OF STATE AND PROVISION
OF ARMY SUPPLIES FOR THIS
TASK.

CLASSIFICATION: / S E C R E T /

SECRET

PARAPHRASE NOT REQUIRED
HANDLE AS
CORRESPONDENCE PER PARAGRAPH
16-C, (CHANGE 5) 18-C, 53-A,
53-D (1) (2) (3) AND 60-A (1)
(2) (3) (4), 15 AUGUST 1946
AR 380-5

FEC ITEM 1:

JUST HANDED URAD WX80494 WHICH WE
INTERPRET AS AUTHORITY TO ISSUE SUPPLIES
TO APL UNDER CONDITIONS OURAD 55300.
(END OF ITEM 1)

~~FEC ITEM 1: [REDACTED]~~

~~FEC ITEM 2: [REDACTED]~~

FEC ITEM 2:

WILL HOLD OTHER TWO LST'S IN STANDBY
STATUS IN JAPANESE WATERS. PROBABLY
AT KAGOSHIMA. UNDERSTAND CREWS
BEING FLOWN HERE FOR TWO LSTS ONLY.
(END OF ITEM 2)

GENERAL HEADQUARTERS, FAR EAST COMMAND
ADJUTANT GENERAL'S OFFICE
RADIO AND CABLE CENTER

G-4 ROUTING

A C/S G-4	_____
D AC/S G-4	_____
EXECUTIVE	_____
PERSONNEL & POLICY	_____
OPERATIONS	_____
CONST. & FAC	_____
SUPPLY	_____
PETROLEUM	_____
PERSONNEL ADMINISTRATION	<u>A</u>

Action

INCOMING MESSAGE

ELT/rea

ACTION COPY
Secret
PRIORITY

THIS RADIO USED BY COL RASH & DEYOUNG AT TELECON 11 Mar 50 2200 HOURS SATURDAY
JLR

FROM : DA (CSGPO) WASH DC

TO : CINCPAC TOKYO JAPAN

INFO : CINCPAC OAHU TH, COM 7TH FLT PEARL HARBOR TH, COMNAVFE TOKYO JAPAN

NR : WX 80494

REUR CX 55300 of 10 Mar 50. This msg in 3 parts.

Part 1. Planned asst by Army ur commandant on terms Part 3 URAD.

Part 2. CNO concurs that Navy provide life saving equipment, necessary navigational equipment and emergency sanitary facilities on loan basis with provison equipment be returned in good condition or reimbursement made. Installation costs emergency facilities and pol to be provided on reimb basis.

Part 3. Date and details for ISYS to pass from ur control follow soonest but actions contemplated Parts 1 and 2 above nevertheless auth in interim.

ACTION : G-4,

NO SIG

INFORMATION : COMMANDER IN CHIEF, CHIEF OF STAFF, G-1, G-2, G-3, AG, DIPLOMATIC, TRANS

63427

PRIORITY

TOO : 110143 Z

MCN : 57839

Secret

Consult Crypto-Center before declassifying. Paraphrase not required. Handle as correspondence of classification carried hereon per paragraphs 17 a (1) (2), and 41 c (2) (3), AR 380-5, 15 Nov 49.

Paraphrase not required. Handle as correspondence of classification carried hereon per paragraphs 51i and 60a, AR 380-5.

ACTION COPY

GENERAL HEADQUARTERS, FAR EAST COMMAND
ADJUTANT GENERAL'S OFFICE
RADIO AND CABLE CENTER

EXECUTIVE	<input checked="" type="checkbox"/>
PLANS & POLICY	<input checked="" type="checkbox"/>
OPERATIONS	<input type="checkbox"/>
CONST & FAC	<input type="checkbox"/>
SUPPLY	<input type="checkbox"/>
PETROLEUM	<input type="checkbox"/>
PERSONNEL	<input type="checkbox"/>
ADMINISTRATION	<input checked="" type="checkbox"/>

*370.05
Anna*

INCOMING MESSAGE

Secret
ROUTINE

ELT/rdd

12 Mar 50

FROM : STATE DEPT WASH DC

TO : SCAP (USPOLAD) TOKYO JAPAN

NR : 112042 Z (SENT DEPT 401 Mar 11 7 AM RPTD MANILA 23 SHAI
54 HONG KONG 108) (DEPT PASS USPOLAD TOKYO 22 FROM
TAIPEI) (DEPTEL 204 MAR 10 RPTD MANILA 406 TOKYO 227
SHANGHAI 411) (BOOK MESSAGE)

"Note recd from FONOFF today confirms verbal statements reported MYTEL 377 Mar 8 rptd Shanghai 53 Manila 21 but does not specifically mention safe passage.

"Shall present note to FONOFF morning March 3 confirming desired procedure will be followed, stating in general terms how evac to be carried out, promising additional info when avail, and requesting FONOFF give soonest in writing assurance of safe passage all vessels concerned.

"Copy of assurance, agreed to by Chen Tai-Chu, will be safe handed to Hong Kong earliest.

"Will seek assurances Mar 13 from Chin Ave and CAF, Signed Stong."

ACHESON

ACTION : DIPLOMATIC

INFORMATION : COMMANDER IN CHIEF, CHIEF OF STAFF, G-1, G-2, G-3, G-4, TRANS, COMNAVFE

63498

ROUTINE

TOO : 112042 Z
MCN : 57862

Consult Crypto-Center before declassifying. Paraphrase not required. Handle as correspondence of classification carried hereon per paragraphs 17 a (1) (2), and 41 c (2) (3), AR 380-5, 15 Nov 49.

Paraphrase not required. Handle as correspondence of classification carried hereon per paragraphs 51i and 60a, AR 380-5.

GENERAL HEADQUARTERS, FAR EAST COMMAND
ADJUTANT GENERAL'S OFFICE
RADIO AND CABLE CENTER

G-4 ROUTING	
A C/S G-4	
D AC/S G-4	
EXECUTIVE	
PLANS & POLICY	
OPERATIONS	
CONST & FAC	
SUPPLY	
PETROLEUM	
PERSONNEL	
ADMINISTRATION	

*370-05
China*

INCOMING MESSAGE

Secret
PRIORITY

ELT/raf

12 Mar 50

FROM : STATE DEPT WASH DC
TO : SCAP (USPOLAD) TOKYO JAPAN
INFO : CSUSA WASH DC

NR : 112245 Z (SENT NIACT SHANGHAI 420 RPTD TOKYO 229, MANILA 408, HONG KONG 482, TAIPEI 208, MARCH 11, 2 PM) (BOOK MSG)

Crews 2 LSTs due arrive Yokohama March 11. Vessels being provisioned and fueled. It is desired to have as firm assurances as possible from Commie authorities re entry at Shanghai and safeguards against Commie attack during voyage. Vessels being held Yokohama pending further word from Shanghai on clearance. CONGEN should urgently notify dept and concerned posts when clearance obtained.

Assumed APL Office will make prior arrangements re labor and other obligations at Shanghai in order avoid any difficulties this regard while in port.

CONGEN please advise its views desirability departmental announcement at this time that LSTs already to enter Shanghai for evacuation.

Manila or Hong Kong should obtain names 2 master LSTs from Goodwin of APL and notify Shanghai immediately.

ACHESON

63504

(over)
PRIORITY

Secret

Consult Crypto-Center before declassifying. Paraphrase not required. Handle as correspondence of classification carried hereon per paragraphs 17 a (1) (2), and 41 c (2) (3), AR 380-5, 15 November 1949.

Paraphrase not required. Handle as correspondence of classification carried hereon per paragraphs 51i and 60a, AR 380-5.

Secret
PRIORITY

FROM : STATE DEPT WASH DC NR : 112245 Z 12 MAR 50 CONT'D

ACTION : DIPLOMATIC

INFORMATION : COMMANDER IN CHIEF, CHIEF OF STAFF, G-1, G-2, G-3,
G-4, COMNAVFE

112245 Z

63504

PRIORITY

Secret
-2-

TOO : 112245 Z
MCN : 57895

A C/S G-4
O AC/S G-4
EXECUTIVE
PLANS &
OPERATIVE
CONST



370.05
China

SECRET

Lt Col Akin 26-6055

G-4 ROUTING

A C/S G-4 _____

D AC/S G-4 _____

EXECUTIVE _____

PLANS & POLICY _____

OPERATIONS _____

CONST & FAC _____

SUPPLY _____

PETROLEUM _____

G-4 _____

PERSONNEL _____

ADMINISTRATIVE _____

Supplies for LST's

Signal

11 March 1950

(1) 1. It is requested that necessary action be initiated immediately to effect preparation of the following equipment and supplies for anticipated early delivery to four (4) LST's, Numbers QO 19, QO 21, QO 42 and QO 43, all anchored at Yokohama:

8 ea (2 to each LST) Radio Set SCR 300 (Walkie-Talkie), Stock No. 28300, with 30 days supply of batteries

8 ea (2 to each LST) Lamp, Signal, Stock No. 68819, with 30 days supply of batteries

2. This does not constitute authority to make delivery of the subject items. Proper authority, with instructions as to time and exact place of delivery, will be given at a later date.

3. When delivery is authorized and effected, appropriate receipts will be obtained from the ships' Masters or other duly authorized representatives of the American President Lines.

4. Reimbursement will be effected upon completion of the project and return to stock of those expendables and non-expendables which are in a condition acceptable to the Signal Depot officers. Expendables consumed and/or non-expendables lost or damaged beyond acceptability for return to stock will be priced in accordance with existing directives.

Mfar

G. L. E.

SP GD AKA/EHM/ra
11 March 50

MEMO FOR RECORD:

1. Subj equipment and supplies are required for project involving evacuation of personnel from Shanghai. For full info regarding the project see C/N to QM, same subj, 10 Mar 50.

2. Request for subj Signal items was relayed from COMNAVFE (Cmdr Meola) through G-4 P&P (Lt Col DeYoung).

3. Initiated case.

AKA *aka* 26-6055

EHM *DD* 26-6043 (Div Chief)

Sup
2990

SECRET

G-4

320.05 China
~~1222 IT~~

SECRET

Mr. W

Colonel P. L. Rash
(26-6455)

Telecon with Department of Army

G-4

SIG O.

11 March 1950

1. A telecon with Department of Army is desired at 2200, 11 March (Tokyo Time), having a representative of G-3 and G-4 present.

2. Reason for Telecon: Loading of Army supplies and equipment aboard LST's at Yokohama for use of State and its Agent APL for evacuation of Shanghai is being delayed for Department of Army approval. Imperative immediate authority be granted so that prearranged schedules and rendezvous may be kept. Refer to ourad CX-55300, 10 March 1950.

----- G. L. H. -----

G-4 FILE

G4 File

SECRET

GENERAL HEADQUARTERS, FAR EAST COMMAND
ADJUTANT GENERAL'S OFFICE
RADIO AND CABLE CENTER

*370.05
China*

INCOMING MESSAGE

Confidential
ROUTINE

WG/mjo

11 Mar 50

G-4	
A C/S G-4	
AC/S G-4	
EXECUTIVE	
PLANS & POLICY	
OPERATIONS	
CONST & FAC	
SUPPLY	
PETROLEUM	
PERSONNEL	
ADMINISTRATION	

FROM : STATE DEPT WASH DC

TO : SCAP (USPOLAD) TOKYO JAPAN

NR : 111406 Z (MAR 11, 9 AM) (DEPT PASS PRIORITY SCAP
TOKYO 94, MAR 11, 5 PM FROM SHANGHAI) (BOOK MSG)

"Re SCAP Tel 17 Mar 9. APL Shai states will be enough doctors and nurses as passengers to handle any emergency requirements on short trip to Gordon. Except canned food for babies to use in case IST's delayed for any reason no special foods required. Each IST shld be supplied with usual medical kit for emergency use including delivery packs plus blanket set. Flaming. Signed McConaughy."

ACHESON

ACTION : DIPLOMATIC

INFORMATION : COMMANDER IN CHIEF, CHIEF OF STAFF, G-4, COMNAVFE

NOTE : Reference msg Tel 17 is CINCFE's radio C 55295 (DIPLOMATIC).

63471

ROUTINE

TOO : 111406 Z

MCN : 57850

Confidential

Consult Crypto-Center before declassifying.
Paraphrase not required. Handle as correspondence of classification carried hereon per paragraphs 17 a (1) (2), and 41 c (2)(3), AR 380-5, 15 November 1950.

Paraphrase not required. Handle as correspondence of classification carried hereon per paragraphs 51i and 60a, AR 380-5.

GENERAL HEADQUARTERS, FAR EAST COMMAND
ADJUTANT GENERAL'S OFFICE
RADIO AND CABLE CENTER

G-4 ROUTING	
A C/S G-4	<i>m</i>
AC/S G-4	<i>aw</i>
EXECUTIVE	
PLANS & POLICY	
OPERATIONS	
LIST & FAC	
ELT/rjs	
PETROLEUM	
PERSONNEL	
ADMINISTRATION	<i>H</i>

*370.05
China*

INCOMING MESSAGE

Confidential
EMERGENCY

11 Mar 50

FROM : STATE DEPT WASH DC

TO : SCAP (USPOLAD) TOKYO JAPAN, DA (PASS INFO CHIEF OF STAFF) WASH DC

NR : 110747 Z (STATE SVC MAR 11, 2 AM SIGNED ACHESON) (RELAYS FROM MANILA SIGNED COWEN-SENT DEPT UNNUMBERED, MAR 11, 2 PM) (PASS USPOLAD TOKYO NIACT AS MANILA'S 29)

"Re Shanghai evacuation.
"Emb just informed 2 Yangtze River Pilots and 1 diesel engineer arriving Manila this afternoon by air from Hong Kong and leaving for Tokyo tonight NWA Flt 800.
"One pilot named Sudbury. Others name unknown. Both British subjects. Engineer is J M Kyle, US citizen.
"Emb not informed re documentation entry Japan. Suggest you inform CINCFE and SCAP urgently and assure admission."

NO SIG

ACTION : DIPLOMATIC

INFORMATION : COMMANDER IN CHIEF, CHIEF OF STAFF, G-1, G-2, G-3, G-4, JSPOG, TRANS

63434

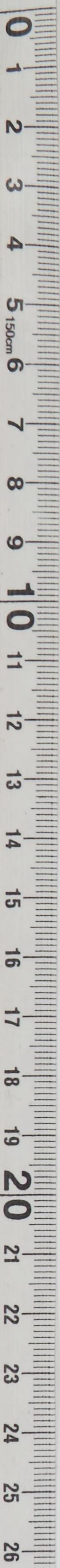
Confidential
EMERGENCY

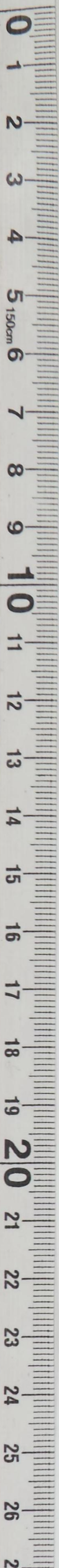
TOO : 110747 Z
MCN : 57843

39

Consult Crypto-Center before declassifying.
Paraphrase not required. Handle as correspondence of classification carried hereon per paragraphs 17 a (1) and 41 c (2) (3), AR 380-5, 15 Nov 49.
Paraphrase not required. Handle as correspondence of classification carried hereon per paragraphs 51i and 60a, AR 380-5.

EMERGENCY





G-4 ROUTING	
A C/S G-4	_____
D AC/S G-4	_____
EXECUTIVE	_____
PLANS & POLICY	<u>mm</u>
OPERATIONS	_____
CONST & FAC	_____
SUPPLY	_____
PETROLEUM	_____
PERSONNEL	G-4
ADMINISTRATION	<u>21</u>

SECRET

370.05 Chris

Col. Rash 26-6455

Shanghai Evacuation

C/S

11 MAR 1950

2

1. Mr. Gabrielson, (Tokyo Representative of American President Lines) has been in telephonic communication with his San Francisco office, and furnished G-4 (Col. Rash) the following details concerning the evacuation of Shanghai:

a. There has been no change in the rendezvous date for LSTs to meet the APL liner GORDON. The exact time is 1000 hours, 20 March, off Saddle Island.

b. State Department has authorized only two LSTs instead of four as previously planned. Code names for the two LSTs selected will be MIKE and NED.

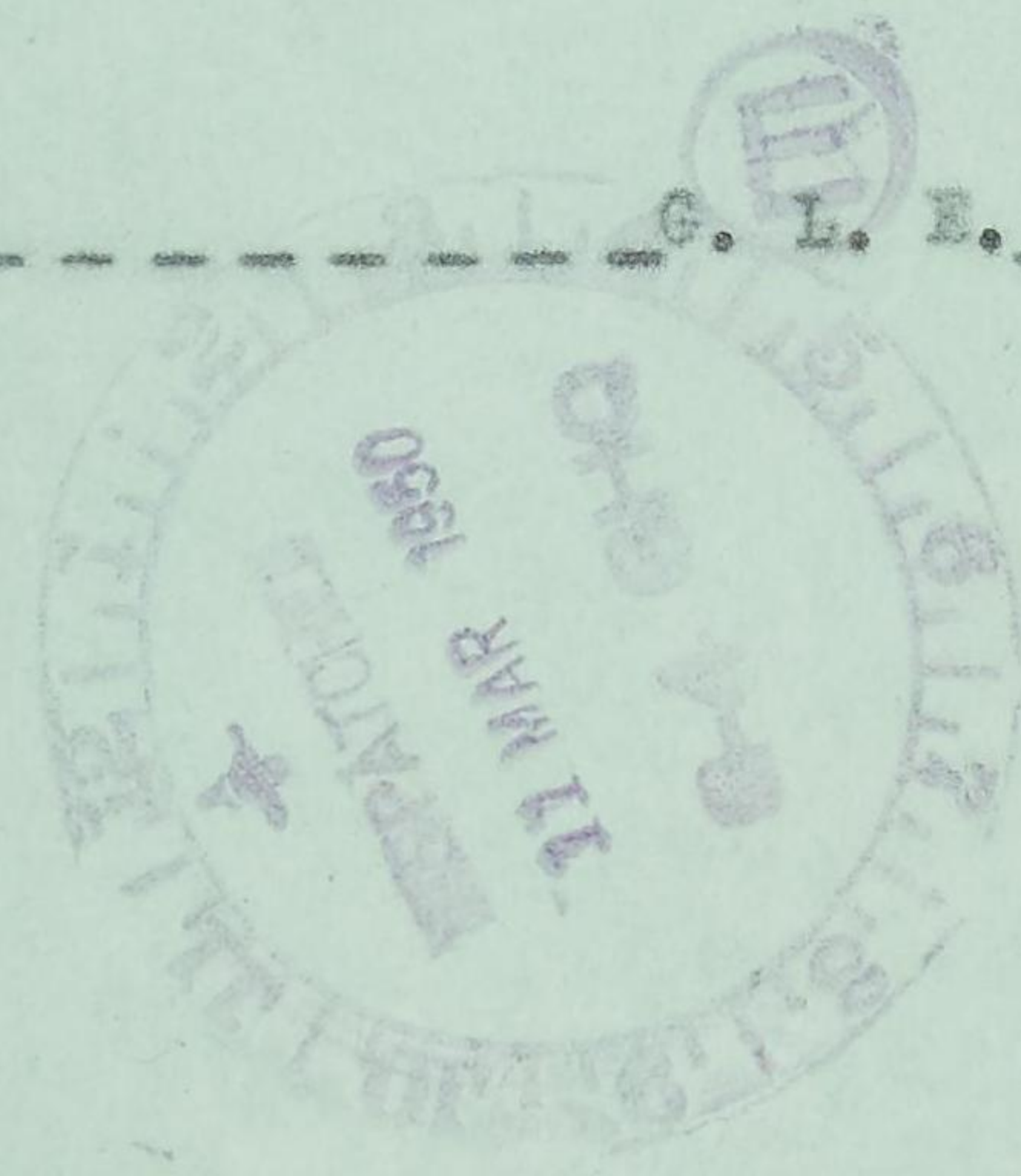
c. Crews have been recruited in the U. S. and are being flown to Haneda so as to arrive aboard one PAL plane and one PANAM plane early 13 March.

2. It is planned to sail from Yokohama just as soon as crews are aboard, which appears at this time to be before noon 13 March.

3. G-4 intends to direct QM and Med to deliver to APL and load aboard LSTs prior to 1800, 12 March. It is anticipated that authorization for delivery of these items to APL, which was requested from D/A in our radio CX 55300, 10 March 50, will have been received by that time.

4. Approval is requested to deliver the supplies to APL, as indicated above, in the event this authorization from D/A is not received as anticipated.

1 Incl
Radio CX 55300
10 Mar 50



G-4 File Copy

R+P
2937

SECRET

G-4 File Copy

SECRET

/WJS/JBP/ejm

*370 05
Line*

11 Mar 1950

4 to Taipei
23 to Shanghai
243 to Depstate
Unnum to Hongkong
27 to Manila

AMCONGEN TAIPEI TAIWAN...PRIORITY
INFO: AMCONGEN SHANGHAI CHINA..PRIORITY
DEPT OF STATE WASH DC....PRIORITY
AMCONGEN HONGKONG... ..PRIORITY
AMBASSY MANILA PI.....PRIORITY

110727

EX 55336

Four LSTs gross tonnage 3800 each used Shanghai evacuation have following numbers painted in white on Navy grey hulls: QO-21, QO-42, QO-19, and QO-43. Diesel engine vessels. Call numbers respectively are JAUY, JBRY, JASY, and JBY. Vessels will follow standard commercial practice of calling on 500 KC and after contact adjusting frequency as required for clarity.

Each vessel will fly American and APL house flags and have American flags 8 x 13 ft painted on both sides and 24 x 39 ft on top deck. Definite information regarding hours route will be supplied when known.

SEBALD

OFFICIAL:

APPROVED:

K.B. BUSH
Brigadier General, AGD
Adjutant General

W.J. SEBALD
Chief
Diplomatic Section
ADMINISTRATION

A C/S G-4	
AG/S G-4	
EXECUTIVE	
PLANS & POLICY	<i>SR</i>
OPERATIONS	
CONST & FAC	
SUPPLY	
PETROLEUM	

Info copies to:

M/R: Above information from Navy and APL.

COMNAVSTA
C-4

JBP 26-8143

handling and transmission of literal plain text of this message as correspondence of the same classification has been authorized by the War Department in accordance with the provisions of paragraphs 16-C, 18-E, 53-D (1) (2) (3), and 60-A (1) (2) (3) (4), AR 380-5, 6 March 1946

SECRET INFORMATION COPY



G-4

GENERAL HEADQUARTERS, FAR EAST COMMAND
ADJUTANT GENERAL'S OFFICE
RADIO AND CABLE CENTER

*370.05
China*

INCOMING MESSAGE

Secret
PRIORITY

ROUTING	
A C/S G-4	
D AC/S G-4	
EXECUTIVE	
PLANS & POLICY	
OPERATIONS	
CONST & FAC	
ELT/com	
SUPPLY	
PETROLEUM	
11 Mar 50	REL
ADMINISTRATION	

FROM : STATE DEPT WASH DC
 TO : SCAP (USPOLAD) TOKYO JAPAN , DA WASH DC
 INFO : CSUSA WASH DC
 NR : 110318 Z (SENT SHANGHAI 410 RPTD PRITY TOKYO 224 MANILA
 401 TAIPEI 203 HONG KONG 478 LONDON 1097 MARCH 10 7 PM)

REUR 1013 Mar 9 rptd Manila 45, Taipei 241, Hong Kong
 118.

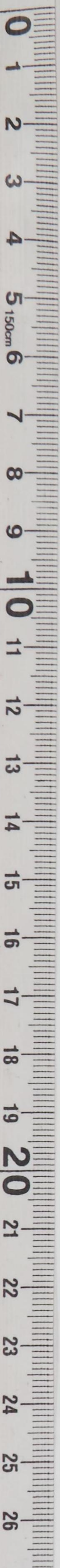
In view high cost undertaking, particularly cost of crews, has been decided use 2 LST's for evac. Crews expected leave Pacific Coast for Yokohama by plane Mar 11. Departure LST's fr Yokohama for Shanghai estimated Mar 14, subj to change. Present plan, subj to modification as circumstances dictate, is for 1st LST to Pioneer Channel and bring out as priority Amer belongings, Amer Govt Property and such passengers for Yokohama as CG decides. SECOF LST to ferry passengers to Gordon, other Natis on space aval basis, Amers to have priority, Brit Natis whose Govt has undertaken protect Amer interests in China so far as feasible to have 2d priority.

Nrs 2 LST's 456 and 587, Hull Nrs Q-043 and Q-042. USPOLAD pls relay interests posts any subsequent info re sailing time, route, etc. Re Shanghai's 1027 Mar 9 EANH LST will carry crew of 41 officers and men.

Natl so that countries bound Shanghai wld probably embark Gordon at Hong Kong in expectation LST on 1st ferry trip cld carry them Shanghai.

63420 (over) PRIORITY

Consult Crypto-Center before declassifying.
 Paraphrase not required. Handle as correspondence of classification carried hereon per paragraphs 17 a (1) (2), and 41 c (2) (3), AR 380-5, 15 Nov 49.
 Paraphrase not required. Handle as correspondence of classification carried hereon per paragraphs 51i and 60a, AR 380-5.



~~Secret~~
PRIORITY

FROM : STATE DEPT NR : 110318 Z 11 MAR 50 CONT'D

No responsibility cld of course be assumed on Amer side.
This question probably determinable by time Gordon arrives
Hong Kong. Brit emb here so informed.

ACHESON

ACTION : DIPLOMATIC

INFORMATION : COMMANDER IN CHIEF, CHIEF OF STAFF, G-2, G-3, G-4,
TRANS

63420

PRIORITY
~~Secret~~

TOO : 110318 Z
MCN : 57835

GENERAL HEADQUARTERS, FAR EAST COMMAND
ADJUTANT GENERAL'S OFFICE
RADIO AND CABLE CENTER

*3 20:05
China*

INCOMING MESSAGE

[Signature]
ROUTINE

ELT/cmk

11 Mar 50

G-4 ROUTING	
C/S G-4	<i>[Signature]</i>
AC/S G-4	<i>[Signature]</i>
EXECUTIVE	
PLANS & POLICY	
OPERATIONS	
CONST & FAC	
SUPPLY	
PETROLEUM	
PERSONNEL ADMINISTRATION	<i>[Signature]</i>

FROM : STATE DEPT WASH DC
 TO : SCAP (USPOLAD) TOKYO JAPAN, DA WASH DC
 INFO : CSUSAF WASH DC
 NR : 110340 Z (BOOK MESSAGE) (SENT TAIPEI 204 RPTD MANILA 406 TOKYO 227 SHANGHAI 411)

REUR 363 March 6 rptd Shanghai 52 Manila 20 and ur 377 March 8 rptd Shanghai 53 Manila 21, Dept considers it advisable you req fr Chi Govt in writing assurance safe passage Gen Gordon and LST's in evacuation operation. In addition, it is desirable to have direct assurances fr Chi Navy and AF on same basis as ur approach FONOFF. (URTEL 377). APL desires copy Chi Govt written assurance.

You shld pass to Nats subsequent details re voyage such as arrival dates, markings, etc, as they are recd by you.

ACHESON

ACTION : DIPLOMATIC

INFORMATION : COMMANDER IN CHIEF, CHIEF OF STAFF, G-1, G-2, G-3, G-4, TRANSP

63353

ROUTINE

TOO : 110340 Z
MCN : 57827

Consult Crypto-Center before declassifying.
 Paraphrase not required. Handle as correspondence of classification carried hereon per paragraphs 17 a (1) (2) and 41 c (2) (3), AR 380-5, 15 Nov 59.

Paraphrase not required. Handle as correspondence of classification carried hereon per paragraphs 51i and 60a, AR 380-5.

GENERAL HEADQUARTERS, FAR EAST COMMAND
ADJUTANT GENERAL'S OFFICE
RADIO AND CABLE CENTER

INCOMING MESSAGE

*370.05
China*

Secret
PRIORITY

G-4 ROUTING	
<input checked="" type="checkbox"/>	A C/S G-4
<input checked="" type="checkbox"/>	AC/S G-4
<input checked="" type="checkbox"/>	EXECUTIVE
<input type="checkbox"/>	PLANS & POLICY
<input type="checkbox"/>	OPERATIONS
<input type="checkbox"/>	CONST & FAC
<input type="checkbox"/>	SUPPLY
<input type="checkbox"/>	PETROLEUM
<input checked="" type="checkbox"/>	PERSONNEL
<input checked="" type="checkbox"/>	ADMINISTRATION

TER/jev

11 Mar 50

FROM : STATE DEPT
 TO : SCAP (USPOLAD) TOKYO JAPAN
 INFO : CSUSA WASH DC
 NR : 110003 Z (BOOK MSG) (STATE SERIAL 220 MAR 10, 5 PM)
 (REPEAT TO YOKOHAMA)

URTEL 232 Mar 9 Customs authorizes issuance provisional certificate registry 2 LST s. Show ownership US America represented by State Dept and names Mike and Ned.

ACHESON

ACTION : DIPLOMATIC
 INFORMATION : COMMANDER IN CHIEF, CHIEF OF STAFF, G-4, COMNAVFE
 NOTE : Ref msg URTEL 232 is CINCFE's rad C 55304 (DIPLO).
 NOTE : This msg passed to Comm Center for electrical transmission to USPOLAD YOKOHAMA JAPAN for info.

63186

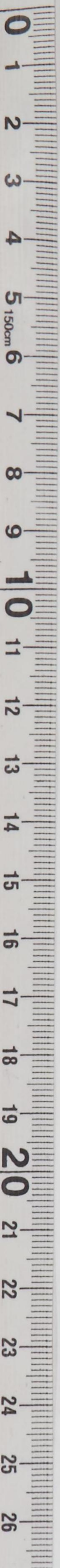
PRIORITY

TOO : 110003 Z
MCN : 57803

Secret

Consult Crypto-Center before declassifying.
 Paraphrase not required. Handle as correspondence of classification carried hereon per paragraphs 17 a (1) (2), and 41 c (2) (3), AR 380-5, 15 Nov 49.
 Paraphrase not required. Handle as correspondence of classification carried hereon per paragraphs 51r and 60a, AR 380-5.

12



Handling and transmission of this
plain text of this message as
precedence of the same classification
has been authorized by the War Depar-
tment in accordance with the pro-
visions of paragraphs 16-C, 18-E,
53-D, (1) (2) (3), and 60-A (1) (2)
(3) (4), AR 380-5. 6 March 1946

GENERAL HEADQUARTERS
COMMUNIST COMMANDER FOR THE ALLIED POWERS

OUTGOING MESSAGE

DB/WJS/JBY/eja

370

SECRET

FROM: SCAP TOKYO JAPAN

Date: 11 Mar 1950

No : 5 to Taipei

TO: AMCONGRN TAIPEI TAIWAN..

25 to Shanghai

PRIORITY

245 to Depstate

Unnum to Hongkong

INFO: AMCONGRN SHANGHAI CHINA..

29 to Manila

PRIORITY

DEPT OF STATE WASH DC....

PRIORITY

AMCONGRN HONGKONG.....PRIORITY

TT0921

AMBASSY MANILA.....PRIORITY

CX55352

Mytel 4 to Taipei, 23 to Shanghai,
243 to Department, unnum to Hongkong, 27 to Manila,
March 11.

If only two LSTs to be used in Shanghai evacuation
and designated Mike and Ned respectively as indicated
unofficially in telephone conversation between AFL
Yokohama and San Francisco Navy selects QO-42 for Mike
and QO-43 for Ned. Tentative figure for officers and
crew each vessel 43; names masters not known here.

SEBALD

ROUTING	
A C/S G-4	
D AC/S G-4	
EXECUTIVE	
PLANS & POLICY	38R
OPERATIONS	
CONST. & FAC	
SUPPLY	
PETROLEUM	
PERSONNEL	
DIPLOMACY	
REVENUE	

OFFICIAL:

APPROVED:

K.B.BURN
Brigadier General, AGD
Adjutant General

W.J. SEBALD
Chief
Diplomatic Section

Info copies to:

COMNAV78
C-4

R/R: Comdr. Keola selected
the two vessels indicated
above.

JBY 26-8143

SECRET

INFORMATION COPY

G-4



...and the classification of this
main text of this message as
...has been authorized by the War Depart-
ment in accordance with the pro-
visions of paragraphs 16-C, 18-E, 18-F,
19-D, (1) (2) (3), and 60-A (1) (2)
(3) (4), AR 380-2, 6 March 1946

GENERAL HEADQUARTERS
COMMUNIST COMMANDERS FOR THE ALLIED TOWNS

SECRET

FROM: HQAF TOKYO JAPAN
TO: AMEMBANK TAIPEI TAIWAN...
SUBJECT: ...
DATE: 11 Mar 1950
NO: 2 to Taipei
25 to Bangkok
245 to Davao
246 to Hongkong
29 to Manila

TIOSI

CX 25325

245 to Department, Manila to Bangkok, 27 to Manila,
March 11.

If only two sets to be used in Bangkok ever again
and designated Mike and Ned respectively as indicated
mostly in telephone conversation between Mike
Horsman and the Transloc Navy officer 60-42 for Mike
and 60-43 for Ned. Tentative figure for officers and
over each vessel 42; names numbers not shown here.

- EXECUTIVE
- PLANS & POLICY
- OPERATIONS
- COMINT & FAC
- SUPPLY
- PETROLEUM

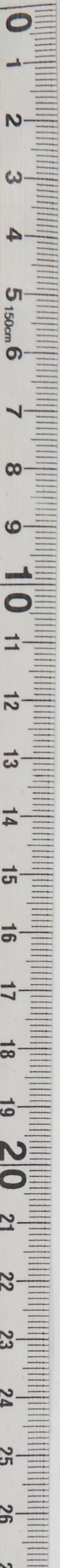
RECEIVED
12 MAR 1950
11 AM 81

MAILED
MAR 11 1950
11 AM
DIP. SEC.
S.C.A.P.

K.B. BUCH
Brigadier General,
Adjutant General

Info copies to:

SECRET INFORMATION COPY



handling and transmission of lateral plain text of this message as correspondence of the same classification has been authorized by the War Department in accordance with the provisions of paragraphs 16-C, 18-E, 53-A, 53-D (1) (2) (3), and 60-A (1) (2) (3) (4), AR 380-5. 6 March 1946

SECRET 370-35
[Handwritten signature]

/SJS/JBP/eja

10 Mar 1950
 22 to Shanghai
 241 to Depstate

AMONGST SHANGHAI CHINA... PRIORITY

INFO: DEPT OF STATE WASH DC... ROUTINE

110411

CX55331

LSTs have following numbers painted on hulls: Q 021, Q 043, Q 019, and Q 043. These should be used for identification purposes as vessels bear no names. In case information needed corresponding Navy numbers are 53, 587, 616, and 456. Department requested to obtain authorization for Yokohama issue provisional certificates of registry (FBR XVII-9) covering each vessel which will fly American flag. Also American flags painted on both sides and top deck of each ship. Emergency accommodations for 400 persons each vessel total 175 in berths in four dormitory rooms on each side of LST recommended for women, children and patients, remainder 225 to be berthed on folding cots in tank deck. Passenger space four LSTs total 1600 based on maximum requirements. Space on LSTs not utilized for passengers should be used for baggage and freight. Also can handle hand baggage under tarpaulins on upper deck of LSTs carrying passengers. Each LST filled to capacity with passengers has no protected space available for freight but can handle limited baggage and freight under tarpaulins on upper deck. If 175 berths only used on any LST its hold with folding cots removed will accommodate approximately 2000 measurement tons or 80,000 cubic feet as stated Tokyo's 12 March 6 to Shanghai. Life saving equipment each LST adequate for 500 passengers. If total evacuees amount to 1000 or less two vessels might be loaded to life boat capacity and other two used for cargo and baggage and thus expedite movement.

It is presently expected that all four vessels will arrive Shanghai about same time as it is tentatively planned all four will be dispatched from Yokohama same time. AFL Shanghai to allocate passenger and cargo space according to above information. Summary of requirements and allocations this connection would be appreciated here. AFL states fare from Yokohama to San Francisco on GARDON first class \$350 third class \$240. Substance of foregoing supplied by Navy and AFL. Information on officers and crews will be forwarded as seen as known here.

A C/S G-1	
AC/S G-2	
EXECUTIVE	
PLANS & POLICY	
OPERATIONS	
CONST & FAC	
SUPPLY	Info copies to:
PETROLEUM	
PERSONNEL	
ADMINISTRATION	

APPROVED: *[Signature]*
 W. J. SEBALD
 Chief
 Diplomatic Section

M/S: Substance of foregoing supplied by Navy and AFL.

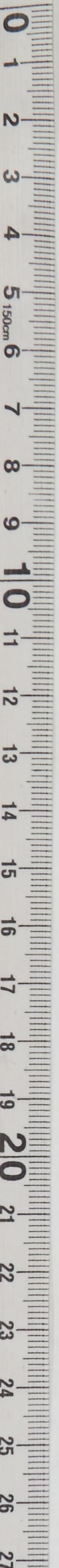
SECRET

JBP 26-3143

6

INFORMATION COPY

7-4



G-4 ROUTING

1	A C/S G-4	Has seen
2	D AC/S G-4	Wong
3	EXECUTIVE	SR
4	PLANS & POLICY	
5	OPERATIONS	
6	CONST & FAC	
7	SUPPLY	
8	PETROLEUM	

370
China
(Handwritten initials)

/RJS/JBF/ejm
6 Mar 1950
12 to Shanghai
222 to Depstate

RESTRICTED

INFO: AMCONSUL SHANGHAI CHINA.....ROUTINE
DEPT OF STATE WASH DCROUTINE

070135

EX 55246

Urtel 46 Feb 27. Navy numbers four LSTs in question 456, 616, 587, and 277. Numbers now painted on hulls are 043, 019, 042, and 055. Nationality American. Gross tonnage 3800 each. Tentative personnel 12 officers 29 crew for each vessel may possibly be reduced by AFL. Maximum space each vessel 99,000 cubic feet. Normal loading 2,000 measurement tons or 80,000 cubic feet. Space for deck cargo not included. Vessels will be fueled for round trip. Other requested data and firm crew info will be forwarded when known.

G-4

OFFICIAL:

K.B. RUSH
Brigadier General, AGD
Adjutant General

APPROVED:

(Handwritten signature)
W.J. SEBALD
Chief
Diplomatic Section

Info copy to:

C-4

W/R: Cleared with Col. P.I. Rash, C-4 handling and transmission of literal plain text of this message as correspondence of the same classification has been authorized by the War Department in accordance with the provisions of paragraphs 16-C, 18-E, 53-A, 53-D (1) (2) (3) and 60-A (1) (2) (3) (4). Approved March 1950

SHANGHAI EVACUATION

RESTRICTED

INFORMATION COPY

370.05
China

SECRET

Lt Col Akin 26-6055

Supplies for LST's

G-4

QM

10 March 1950

(1)

1. It is requested that necessary action be initiated immediately to effect preparation of supplies and equipment, as listed on TAB A, for anticipated early delivery to four (4) LST's, Numbers QO 19, QO 21, QO 42, and QO 43, anchored at Yokohama. This does not constitute authority to make delivery of the subject items. Proper authority, with instructions as to time and exact place of delivery, will be given at a later date.

2. When delivery is authorized and effected, appropriate receipts will be obtained from the ships' Masters or other duly authorized representatives of the American President Lines.

3. Reimbursement will be effected upon completion of the project and return to stock of those expendables and non-expendables which are in a condition acceptable to the QM Depot officers. Expendables consumed and/or nonexpendables lost or damaged beyond acceptability for return to stock will be priced in accordance with existing directives.

4. Copies of the menus on which subsistence quantities are based will be provided by QM for the stewards of the vessels.

1 Incl
TAB A

Mfar
G. L. E.

G-4 ROUTING	
A C/S G-4	_____
D AC/S G-4	_____
EXECUTIVE	_____
PLANS & POLICY	_____
OPERATIONS	_____
CONST & FAC	_____
SUPPLY	_____ <i>200</i>
PETROLEUM	_____
PERSONNEL	_____
ADMINISTRATION	_____ <i>87</i>



Suppl
2902

SECRET

G-4

SECRET

SP GD AKA/EHM/ra
10 March 1950

MEMO FOR RECORD:

SUBJECT: Supplies for LST's.

1. At a conference conducted by G-4 on 9 Mar 49 decision was made to take preliminary action on logistic support for project involving use of 4 LST's to evacuate approximately 1,600 American and foreign nationals from Shanghai. G-4 Supply was assigned responsibility of arranging for adequate food, bedding, medicines, mess equipment and certain incidentals for use by crew and passengers.

2. Size of crew of each LST was tentatively set at 48; however, logistic computations were based on a crew of 50. Maximum number of passengers was established at 400 per LST. Passengers are to remain on LST's for one day only, necessitating only three hot meals for same; however, hot meals and linens for crews are computed on the basis of a 14-day tour.

3. Bedding and linen requirements for each crew member were established at 1 mattress, 2 blankets, 1 pillow, 2 pillow cases, 4 sheets, 4 towels and 2 cakes of soap.

4. Each LST has 170 bunks already provided with mattresses, blankets, and pillows. The only provision necessary for each such bunk consists of 2 sheets and 1 pillowcase. For the additional 230 passengers on each LST requirements for each were computed at 1 canvas cot, 3 blankets, 2 sheets, 1 pillow and 1 pillowcase. Soap is provided on the basis of 1 cake per passenger. Paper towels only are furnished for passengers, as they will be aboard the LST's only 1 day.

5. Each LST has five fresh water tanks with a total capacity of 85,171 gal. Chlorination material is to be provided by QM. Also to be provided by QM are Lister bags, mess gear, garbage cans, cleaning materials, and supplies and such supplementary kitchen equipment as inspection of the LST's show to be needed.

6. Inst C/N instructs QM to prepare itemized supplies for quick delivery but not to effect delivery until further notice. C/N also advises QM as to accountability, return to stock, reimbursement, etc.

7. Initiated case.

AKA AKA 26-6055

EHM EW 26-6043 (Div Chief)

SECRET

SECRET

For four LST's, Nos. QO 19, QO 21, QO 42, QO 43

Deliver to each LST supplies as follows:

Portion A - identified as for "crews" -

50 ea	Mattress, single
100 ea	Blanket, single
50 ea	Pillow
100 ea	Pillow Case
200 ea	Sheet, single bed
200 ea	Towel, bath
100 cake	Soap, toilet

Portion B - identified as for passengers or general ship's use:

230 ea	Cot, canvas, folding
690 ea	Blanket, single
230 ea	Pillow
400 ea	Pillow case
800 ea	Sheets, single
450 sets	Messgear, consisting of tray, knife, fork, spoon, canteen, canteen cup
16 ea	Bag, Lister
400 cake	Soap, toilet
16 ea	Can, garbage, G.I. w/cover
2 ea	Flag, storm

Chlorination material sufficient to chlorinate
85,000 gallons of water.

Sufficient paper towels for 400 persons for 1 day.

Sufficient toilet paper for 400 persons for 1 day
plus 50 persons for 14 days.

Sufficient quantities of appropriate items of
kitchen cleaning material - soap, brushes, steel
wool, etc., for cleaning mess gear and cooking equipment.

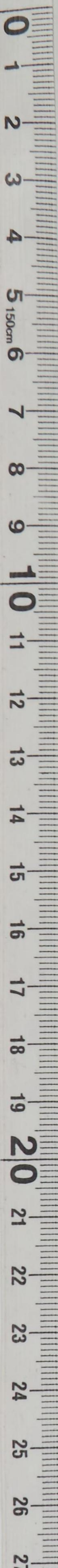
Such additional cooking equipment as may be necessary
to complement equipment presently on hand in the LST
- pots, pans, kettles, ladles, knives, etc., as
determined by inspection.

SUBSISTENCE: Sufficient food on each LST to provide adequate menu of
3 hot meals for crew of 50 for 14 days and 400 passengers for 1 day.

NOTE: Quantities shown are for one (1) LST only.
For total quantities multiply by four (4)

SECRET

Enc (#1)



100255

/WJS/JBP/eJP

RESTRICTED

10 Mar 1950
19 to Shanghai
234 to Depstate

M/R
(Handwritten signature)

EXECUTIVE
PLANS &
OPERATIONS
CONST. & FAC.
SUPPLY
PETROLEUM
PERSONNEL
ADMINISTRATION

AMONGEN SHANGHAI CHINA....PRIORITY

INFO: DEPT OF STATE WASH DC.....PRIORITY

370.05 *Phiner*

KOX 55302

Mytel 12 to Shanghai 222 to Dept March 6.
LST Navy No. 277 with 055 painted on hull has been replaced by
Navy No. 53 having No. 021 painted on hull.

SEBALD

OFFICIAL:

APPROVED:

K.B. DUNN
Brigadier General, AGD
Adjutant General

W.J. SEBALD
Chief
Diplomatic Section

Info copies to:

G-4
SCAJAP (Comdr. Neola)

M/R: Commander Neola, SCAJAP,
informed Dipsec that one
LST had been replaced as
indicated this message.

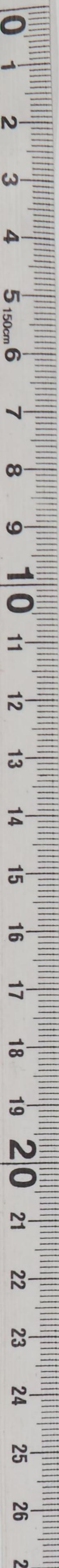
JBP 26-8143

Repeating and...
plain text of this message as corre-
pondence of the same classification
has been authorized by the War Depart-
ment in accordance with the pro-
visions of paragraphs 16-C, 18-E, 53-A,
53-D (1) (2) (3), and 60-A (1) (2)
(3) (4), AR 380-5, 6 March 1946

INFORMATION COPY

RESTRICTED

G-4



100522

RESTRICTED

10 Mar 1950
19 to 20
20 to 21

Handwritten signature

X 25302

Copy 18 to General...
Copy 19 to General...
Copy 20 to General...



INFORMATION COPY

(3) (A), AR 380-2, 6 March 1946
(2) (1) (2), (3), and 60-A (1) (2)
violation of paragraphs 16-C, 18-E, 22-A,
has been authorized by the War Depart
ment in accordance with the pro-
visions of the War Department
Manual, 1946, as corrected.

RESTRICTED

GENERAL HEADQUARTERS, FAR EAST COM, AND
ADJUTANT GENERAL'S OFFICE
RADIO AND CABLE CENTER

INCOMING MESSAGE

G-4 ROUTING	
A C/S G-4	<input checked="" type="checkbox"/>
AG G-4	<input checked="" type="checkbox"/>
EXECUTIVE	<input checked="" type="checkbox"/>
PLANS & POLICY	<input checked="" type="checkbox"/>
OPERATIONS	<input type="checkbox"/>
CONST & FAC	<input type="checkbox"/>
PTS/bgn	<input type="checkbox"/>
SUPPLY	<input type="checkbox"/>
PETROLEUM	<input type="checkbox"/>
PERSONNEL	<input type="checkbox"/>
ADMINISTRATION	<input checked="" type="checkbox"/>

Confidential
DEFERRED

370.05

10 Mar 50

FROM : COMNAVFE TOKYO JAPAN

TO : CNO WASH DC

INFO : CINCFE TOKYO JAPAN, CINCPAC OAHU TH, COM 7TH FLEET PEARL HARBOR TH, COMNAVPHIL MANILA PI

NR : 100705 Z

*370105 China
(9 mar 50)*

Your 082321 Z. Preliminary preparations started 23 Feb. Vessels are ready now.

NO SIG

INFORMATION : COMMANDER IN CHIEF, CHIEF OF STAFF, G-1, G-2, G-3, G-4, AG, DIPLOMATIC, TRANS

63002

DEFERRED

TOO : 100705 Z
MCN : 57781

Consult Crypto-Center before declassifying. Paraphrase not required. Handle as correspondence of classification carried hereon per paragraphs 17 a (1) (2), and 41 e (2), AR 380-5, 15 Nov 49. Paraphrase not required. Handle as correspondence of classification carried hereon per paragraphs 51i and 60a, AR 380-5.

CORRECTED COPY

Confidential

ROUTINE

FROM : STATE DEPT NR : 092206 Z 10 MAR 50 CONT'D

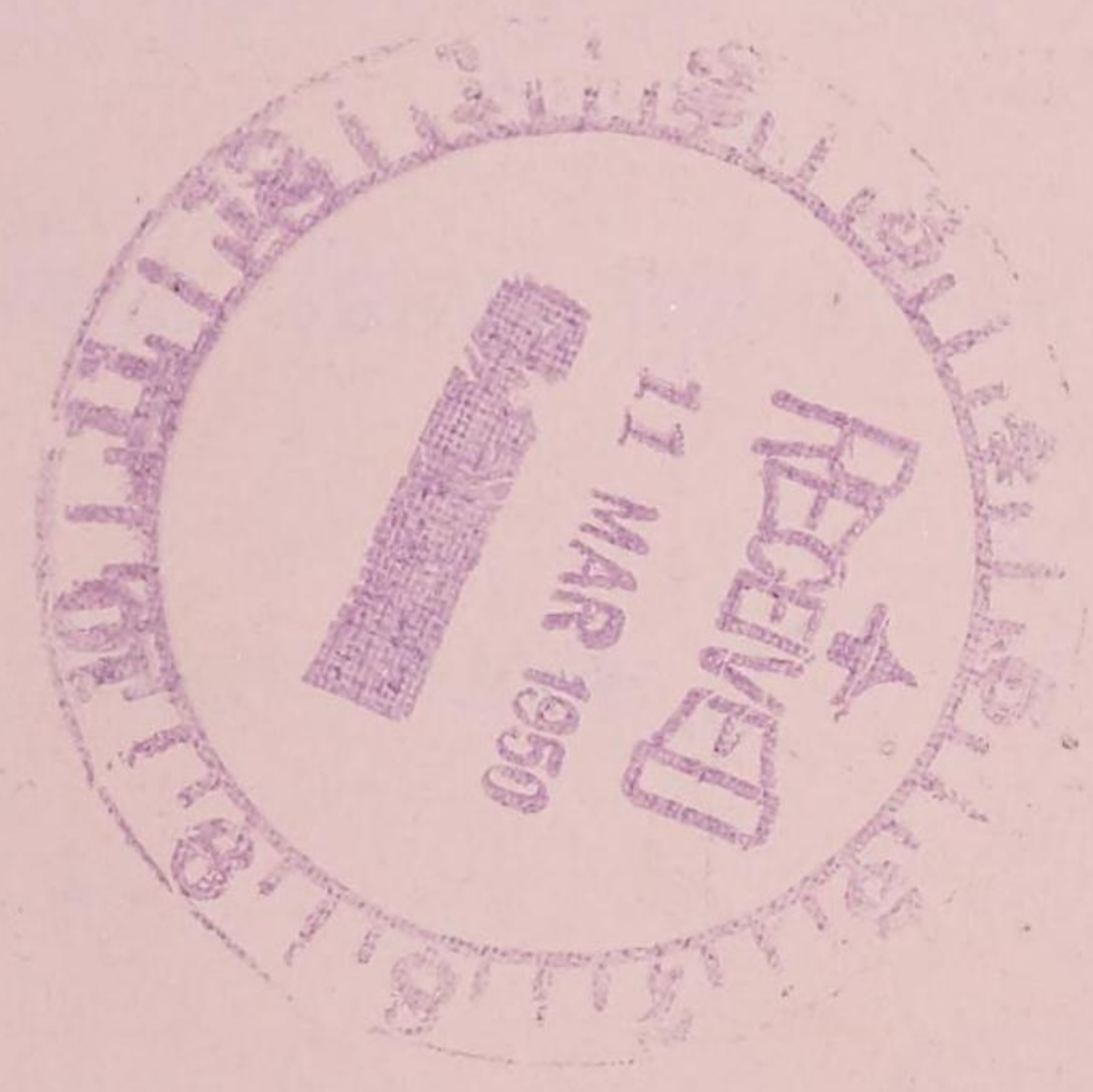
Taipei has been given info re LSTs in Tokyo's 12 to Shanghai March 6.

ACHESON

ACTION : DIPLOMATIC

INFORMATION : COMMANDER IN CHIEF, CHIEF OF STAFF, G-1, G-2, G-3, G-4, TRANS

NOTE: Reference radio Tokyo's 12 is CINCPAC's CX 55246



62738

Confidential
ROUTINE

TOO : 092206 Z
MCN : 57758



handling and transmission of literal
plain text of this message as corres-
pondence of the same classification
has been authorized by the War De-
partment in accordance with the Pro-
visions of paragraphs 16-C, 18-A (2),
53-D (1) (2) (3), and 60-A (1) (2)
(4), AF 320-5, 6 March 1950

GENERAL HEADQUARTERS
FAR EAST COMMAND

OUTGOING MESSAGE

GD P&P GD/ajs
10 March 1950

Secret

FROM: CINCFE TOKYO JAPAN
TO : DA WASH DC PRIORITY
INFO: COMNAVFE TOKYO JAPAN PRIORITY (COURIER)
CINCPAC PEARL HARBOR TH. PRIORITY

CX 55300

For CSGPO. Urmsg WX 80331, 8 March 50. Subject
is Shanghai Evacuation. This msg in three parts.

Part 1. Availability non-Japanese crews. Non-Japanese crew
members unavailable in Japan.

Part 2. Planned Navy Assistance to APL in Japan. Navy will make
available not to exceed 4 LSTs in Yokohama, without crews, cleaned and
equipped for emergency passenger service. Navy providing lifesaving
equipment, necessary navigational equipment and installing emergency
sanitary facilities. Navy also providing fuel on reimbursable basis.

Part 3. Planned Army assistance to APL Japan. APL representative
Japan has requested, and Army plans to make available to APL subject to
DA authorization cots, bedding, mess equipment, subsistence, and such
other non-luxury stores and supplies as are necessary for welfare of
passengers and crews while aboard LSTs. Non-expendable supplies will be
furnished on loan basis, with proviso that supplies will be returned
in same condition as when issued with reimbursement required in event
these conditions are not met. Expendable supplies, including subsistence
and medical supplies, will be issued to APL on reimbursable basis.
Authorization for issue of supplies to APL requested soonest.

OFFICIAL:

K. B. BUSH
Brigadier General, AGD
Adjutant General

APPROVED:

F.L.R.
FOR G. L. EBERTLE
Major General, General Staff Corps
Assistant Chief of Staff, G-4

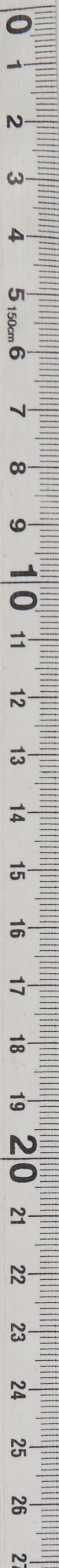
Copies furnished:

- CinC
- C/S
- G-1
- G-2
- G-3
- AG
- DS
- Trans

M/R: Reference is made to G-4 C/N to C/S, subj:
Shanghai Evacuation, 9 March 50, and M/R thereto. Inst
radio approved as amended by C/S 9 Mar 50. Completes
action on G-4 Journal No. 2857.

Secret

G.D. *[Signature]* F.L.R. *[Signature]*
Approved by C/S 9 Mar 50.



SECRET

GENERAL HEADQUARTERS
FAR EAST COMMAND

OUTGOING MESSAGE GD P&P GD/ajs

FROM: CINCPC TOKYO JAPAN

TO : DA WASH DC PRIORITY

INFO: COMNAVFE TOKYO JAPAN PRIORITY (COURIER)

CINCPAC PEARL HARBOR PRIORITY

For CSQPO. Urmsg WX 80331, 8 March 50. Subject is Shanghai Evacuation. This msg in ³ ~~five~~ parts.

Part I. Availability non-Japanese crews. Non-Japanese crew members unavailable in Japan. On 9 March, American President Lines representative Japan received communication from APL representative Manila that prospects are promising for recruitment LST crews ^{with exception of masters} in Philippines. APL Japan immediately transmitted this info to APL San Francisco, and requested that SF office coordinate recruiting activity with Manila office. ^{and of their masters}

Part II. Planned Navy assistance to APL in Japan. Navy will make available not to exceed 4 LSTs in Yokohama, without crews, cleaned and equipped for emergency passenger service. Navy providing lifesaving equipment ^{necessary navigational equipment.} and installing emergency sanitary facilities. Navy also providing fuel on reimbursable basis.

Part III. Planned Army assistance to APL Japan. APL representative Japan has requested, and Army plans to make available ^{to APL} subject to DA authorization, ~~to APL~~ cots, bedding, mess equipment, subsistence, and such other non-luxury stores and supplies as are necessary for ^{welfare of} passenger and crew ~~while~~ while aboard LSTs. Non-expendable supplies will be furnished

SECRET

SECRET

FROM: CINCPAC TO DA WASH DC GD P&P GD/aia

on loan basis, with proviso that supplies will be returned in same condition as when issued with reimbursement required in event these conditions are not met. Expendable supplies, including subsistence and medical supplies, will be issued to AFL on reimbursable basis.

OFFICIAL:

APPROVED:

K. B. HUSH
Brigadier General, AGD
Adjutant General

G. L. HERTLE
Major General, General Staff Corps
Assistant Chief of Staff, G-4

CONCUR as amended.

DS. - J. B. PILCHER J.B.P.

COMNAVFE - ~~COMDR~~ MEOLA D.J.M.

A.P. LINE - CW. GABRIELSON Wey

M/R - Last sentence added later and not concurred in by above initials
J.L.R.

SECRET

GENERAL HEADQUARTERS

FAR EAST COMMAND

CHECK SHEET Capt. McMahan 26-6041

(Do not remove from attached sheets)

File No:

Subject: Shanghai Evacuation

Note
No.

From: G-4

To: C/S

Date: 9 MAR 1950

(1)

1. DA msg WX 80331 (Tab B) to CINCFE, stated that Navy Department would repossess 4 LSTs now in use by SCAJAP and temporarily place them on loan to State Department, who will negotiate a contract with American President Lines to act as operating agent for State Dept., on a cost plus fixed-fee basis. DA emphasized that neither Army nor Navy is responsible for evacuation operation.

2. Basic msg (Tab B) also requested comments on the following:

a. Possibility of recruiting non-Japanese crews in Japan or Philippines.

b. Possibility of Army or Navy in Japan providing fuel for voyage and essential, but non-luxury, supplies for passenger comfort.

3. Non-Japanese crews are not available in Japan. On 9 Mar 50, APL representative in Japan received a communication from APL, Manila, stating that prospects are promising for recruitment of LSTs' crews in Philippines with the exception of Masters. APL, Japan, immediately transmitted this information to APL, San Francisco, and requested that SF office coordinate recruiting activity with the Manila office, and obtain masters for LSTs.

4. COMNAVFE plans to make the 4 LSTs available to APL in Yokohama, without crews, and cleaned and equipped for emergency passenger service. Navy will also provide emergency lifesaving equipment, necessary navigational equipment, and is installing emergency sanitary facilities. Fuel for the voyage will also be provided by Navy on a reimbursable basis.

5. APL representative, Japan, has requested, and if so authorized by DA, the Army can make available cots, bedding, mess, equipment, subsistence, and such other non-luxury stores and supplies as is necessary for welfare of passengers and crews during the voyage. Nonexpendable supplies will be furnished on a loan basis, with proviso that supplies will be returned in same condition as when issued, with a reimbursement in the event these conditions are not met. Expendable supplies, including subsistence and medical supplies, will be issued to APL on a reimbursable basis.

6. Proposed draft radio to DA (Tab A):

a. Submits CINCFE comments relative to availability of crews in Japan and Philippines.

b. Presents a summary of Army and Navy plans for aiding APL.

GENERAL HEADQUARTERS
FAR EAST COMMAND

CHECK SHEET Capt. McMahon 26-6041

(Do not remove from attached sheets)

File No:

Subject: Shanghai Evacuation

Note
No.

From: G-4

To: C/S

Date: 9 MAR 1950

(1)
Cont'd,

7. It is recommended that the proposed radio to DA (Tab A) be approved for dispatch and returned to G-4 for necessary action.

8. Initial concurrences indicated on first draft attached to Tab A:

a. Diplomatic Section---Mr. J. B. Pilcher

b. COMNAVFE --Cdr. Meola

c. APL --C. W. Gabrielson

2 Incls
Tab A
Tab B

[Signature]
G.L.E.

2809

$\frac{9}{2 \frac{1}{2}}$

SECRET

GENERAL HEADQUARTERS
FAR EAST COMMAND

CHECK SHEET
Capt. McShan 26-6041

(Do not remove from attached sheets)

Subject: Shanghai Evacuation

File No:

Note No.	From: G-4	To: O/S	Date: 19 MAR 1950
(1) Cont'd	7. It is recommended that the proposed radio to DA (Tab A) be approved for dispatch and returned to G-4 for necessary action.		
	8. Initial concurrence indicated on first draft attached to Tab A:		
	a. Diplomatic Section--Mr. J. B. Fisher		
	b. COMNAVFE--Cdr. Meola		
	c. APL--C. W. Gabrielson		
	2 Incls Tab A Tab B		

DISPATCHES
9 MAR 1950
04 0410

SECRET

108
0/10



GENERAL HEADQUARTERS, FAR EAST COMM.
ADJUTANT GENERAL'S OFFICE
RADIO AND CABLE CENTER

INCOMING MESSAGE

Secret
PRIORITY

G-4 ROUTING	
PTS/rjs	
A C/S G-4	
D AC/S G-4	
EXECUTIVE	
8 Mar 50	<input checked="" type="checkbox"/>
MANSON POLICY	
OPERATIONS	
CONST & FAC	
SUPPLY	
PETROLEUM	
PERSONNEL	
ADMINISTRATION	<input checked="" type="checkbox"/>

FROM : DA (CSGPO) WASH DC
TO : CINCFE TOKYO JAPAN
INFO : COMNAVFE TOKYO JAPAN, CINCPAC PEARL HARBOR TH
NR : WX-80331

- Refs:
- A. WX 80173.
 - B. WX 80079.
 - C. CX 55157.
 - D. CX 55205.
 - E. CX 55199.
 - F. C 55203.

This msg in 3 parts and is for info and planning purposes.
Part 1. Navy Dept will repossess LSTs temporarily place them on loan to State Dept. State Dept will negotiate contract with American President Lines to act as operating agent for State Dept. Latter underwriting operation on cost plus fixed fee basis. APL operation of LSTs included. APL will assemble crews, including airlift necessary crew members from US and will provide house flag. State Dept and APL notifying their representatives in Japan to consult at once on details re LSTs to include inspection if required to determine operating necessities. State Dept requests and Depts Army and Navy agree cooperation with State and APL. Representatives Japan in this connection. Agency contract between State and Apl to be negotiated here. Reemphasize while desire to assist in any way possible neither Army nor Navy responsible for or involved in evacuation operation for which target date tentatively set 18-20 March.

(over)
62015 PRIORITY

Secret

Consult Crypto-Center before declassifying.
Paraphrase not required. Handle as correspondence of classification carried hereon per paragraphs 17 a (1) (2), and 41 c (2) (3), AR 380-5, 15 November 1949.

2809

RECEIVED
9 MAR 1950

Secret
PRIORITY

RECEIVED
10 MAR 1950

FROM : DA WASH DC NR : WX 80331 8 MAR 50 CONT'D

Part 2. Request you comment following: To avoid high cost of airlift crews from US, State queries possibility that some non-Japanese crew members may exist and be available in Japan or Philippine area for employment by APL for the LST voyage. Also in interest of meeting target date State may request that Army or Navy in Japan provide as available and on reimbursible basis fuel for voyage and essential but non-luxury stores and supplies for passenger comfort during voyage from Shanghai to rendesvous. (1) (2)

Part 3. REURAD C 55203, State Dept advises classification this operation and correspondence relating to it secret during conduct of arrangements with Chinese Nationalists and Communists for entry of LSTs to Shanghai. Contemplate reducing to unclassified when operation actually underway. Accordingly, WX 80079 and CX 55657 (NOTAL) hereby auth to be downgraded to secret. Similar classification will apply any dispatches following until operation downgraded by State Dept. However, no intention at this time of upgrading dispatches with lower classification.

NO SIG

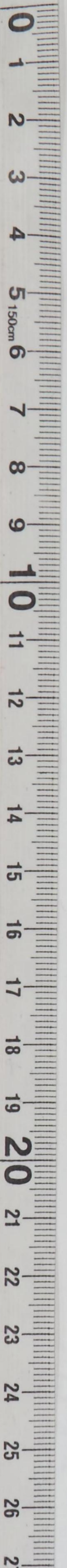
ACTION : e-4

INFORMATION : COMMANDER IN CHIEF, CHIEF OF STAFF, G-1, G-2, G-3, AG, DIPLOMATIC, TRANS

62015

PRIORITY
Secret

TOO : 080015 Z
MCN : 57685



GENERAL HEADQUARTERS, FAR EAST COMMAND
ADJUTANT GENERAL'S OFFICE
RADIO AND CABLE CENTER

370-05
China

INCOMING MESSAGE

Confidential
ROUTINE

EXECUTIVE
PLANS & POLICY
OPERATIONS
CONST & FAC
SUPPLY
PERSONNEL
ADMINISTRATION

10 Mar 50

mm

9

FROM : STATE DEPT WASH DC

TO : SCAP (USPOLAD) TOKYO JAPAN

INFO : CSUSA WASH DC

NR : 092206 Z (BOOK MSG) (SENT HONG KONG 463 REPEATED TOKYO 209 MARCH 9, 2 PM)

Fol is Taipei's 377 March 8 to Dept:

"Sent Department, repeated Shanghai 53, Manila 21.

"Foreign office in official verbal reply my queries reference evacuation states principle approved from first, Chinese Government desires cooperate in every possible way, details of operation desired early enough to assure full coordination by China Naval Patrol Vessels. Names of vessels and dates desired soonest, understood only North Channel to be used.

"Following points made: All American citizens should leave if possible because North Channel is to be mined after this evacuation; Chinese Government desires lists of passengers entering and leaving Shanghai. (May be presented later by mail from Hong Kong and Japan.) Only foreigners and immediate families (including Chinese Nationals) to enter or leave Shanghai; no commercial cargo to be carried; LST's and receiving vessel (Gordon) on arrival at Yangtze mouth should by signal identify selves and explain mission to China Naval Patrol Vessel; as LSTs enter channel with ea load similar procedure to be followed; position at which Gordon to anchor to be supplied in advance.

"No difficulties to be expected from Nationalist Government. Signed Strong."

62738

(over)
ROUTINE
Confidential

Consult Crypto-Center before declassifying.
Paraphrase not required. Handle as correspondence of
classification carried hereon per paragraphs 17a (b)
(2), and 41 and 602, AR 380-5, 15 November 1949.

Confidential

ROUTINE

FROM : STATE DEPT NR : 092206 Z 10 MAR 50 CONT'D

Taipei has been given info re LSTs in Tokyo's 12 to Shanghai March 6.

ACHESON

ACTION : DIPLOMATIC

INFORMATION : COMMANDER IN CHIEF, CHIEF OF STAFF, G-1, G-2, G-3, G-4, TRANS

62738

ROUTINE

Confidential

TOO : 092206 Z
MCN : 57758



GENERAL HEADQUARTERS, FAR EAST COMMAND
ADJUTANT GENERAL'S OFFICE
RADIO AND CABLE CENTER

INCOMING MESSAGE

*370.05
China*

Levi (1)
ROUTINE

G-4 ROUTING	
A C/S G-4	<input checked="" type="checkbox"/>
D AC/S G-4	<input checked="" type="checkbox"/>
EXECUTIVE PLANS & POLICY	<input checked="" type="checkbox"/>
OPERATIONS	<input type="checkbox"/>
CONST & FAC	<input type="checkbox"/>
10 Mar 50	
SUPPLY	<input type="checkbox"/>
PETROLEUM	<input type="checkbox"/>
PERSONNEL ADMINISTRATION	<input checked="" type="checkbox"/>

FROM : STATE DEPT WASH DC
 TO : SCAP (USPOLAD) TOKYO JAPAN
 INFO : CSUSA WASH DC
 NR : 092107 Z (BOOK MSG) (MAR 9, 3 PM), (SENT DEPT 1027 MAR 9, 4 PM RPTD MANILA 47 TAIPEI 241 HONG KONG 120 TOKYO 85 FROM SHANGHAI)

"REDEPTEL 380 Mar 8. APL today applied to Bur Fon Trade for entry 4 LSTs as fol: Q 043, C 019, Q 042, Q 055 in connection with embarking passengers on Gordon. APL rep informed bur 1 ship may not come. Bureau receipt recd applications without comment. Still requires captains names and actual nbr officers and crew members before entry permits can be issued. Note: Tokyo pls supply soonest. CONGEN considers it advisable let entry applications be handled by APL unless serious stumbling block encountered. APL agent in close consultation with CONGEN and receptive to CONGEN advice. Preferable for CONGEN to work behind scenes in view hostile attitude local auths to official US Govt agencies. Fleming. Signed McConaughy."

ACTION : DIPLOMATIC ACHESON
 INFORMATION : COMMANDER IN CHIEF, CHIEF OF STAFF, G-2, G-3, G-4, TRANS

62715 ROUTINE TOO : 092107 Z
MCN : 57753

Levi

Consult Crypto-Center before declassifying.
 Paraphrase not required. Handle as correspondence of classification carried hereon per paragraphs 17 a (1) (2), and 41 a (2) (3), AR 380-5, 15 November 1949.
 Paraphrase not required. Handle as correspondence of classification carried hereon per paragraphs 51r and 60a, AR 380-5.



GENERAL HEADQUARTERS, FAR EAST COMMAND
ADJUTANT GENERAL'S OFFICE
RADIO AND CABLE CENTER

G-4 ROUTING	
A CS 4-4	
AS G-4	
EXECUTIVE	
PLANS & POLICY	
OPERATIONS	
CONST. & FAC	
SUPPLY	
PETROLEUM	
PERSONNEL	
ADMINISTRATION	

370.05
China

INCOMING MESSAGE

~~Secret~~
ROUTINE

WG/1J1

10 Mar 50

FROM : STATE DEPT WASH DC

TO : SCAP (USPOLAD) TOKYO JAPAN

NR : 091555 Z (SENT DEPT 1032 MARCH 9, 5 PM) (RPTD MANILA 49 TOKYO 87 FROM SHANGHAI SIGNED MCCONAUGHY) (BOOK MESSAGE)

"CONGEN has noted reference in DEPTEG 380 Mar 8 to secondary status non-Amer Fon Natis in evac scheme. While recognizing Am cits must come first CONGEN can perceive no objection to embarkation other foners with exit permits up to capacity of Gordon. No undue delay to ship shld result.

"Dept in its tels 195 and 305 stated that assurance had been given to Brit and French Embs in Wash that we wld help in evacuation their Nats all possible. Our evac plan has assumed major importance all Fon communities Shai. So far neither CONGEN nor APL able to confirm specifically that LSTs will be able to take non-Amers but would-be evacuees, knowing our humanitarian interest in facilitating their departure, have prepared to leave in hope they wld be accommodated. Preparation for departure Shai necessarily long drawn out and no one can leave who defers his preparations until last minute. Exclusion now of non-Amers because of less than complete fulfillment of plan wld place US in nos unfavorable light. Fleming, McConaughy."

62652

(over)
ROUTINE

~~Secret~~

Consult Crypto-Center before declassifying. Paraphrase not required. Handle as correspondence of classification carried hereon per paragraphs 17 a (1) (2), and 41 c (2) (3), AR 380-5, 15 November 1949.

Paraphrase not required. Handle as correspondence of classification carried hereon per paragraphs 51i and 60a, AR 380-5.

~~Secret~~
ROUTINE

FROM : STATE DEPT WASH DC NH : 091555 Z 10 MAR 50
CONT'D

ACHESON

ACTION : DIPLOMATIC

INFORMATION : COMMANDER IN CHIEF, CHIEF OF STAFF, G-1, G-2, G-3,
G-4, TRANS

62652

ROUTINE
~~Secret~~
-2-

TOO : 091555 Z
MCN : 57744

370.05
China

/RJS/JBP/ejm

SECRET

9 Mar 1950
232 to Depstate

DEPT OF STATE WASH DC.....PRIORITY

100513

5530A

Four ships to be used Shanghai evacuation bear
Navy Numbers 456, 616, 587, and 53. Since the vessels should
have some type of documentation for entry Shanghai please obtain
authorization from the Commissioner of Customs, Treasury, for the
consular office Yokohama to issue provisional certificates of
registry (Foreign Service Regulations XVII-9) if agreed in Washington
such certificates appropriate and adequate. With exception masters
practically all crews probably alien largely Filipino.

G-4

G-4 ROUTING	
A C/S G-4	
D AC/S G-4	
EXECUTIVE	
PLANS & POLICY	<i>3PR</i>
OPERATIONS	
CONST & FAC	
SUPPLY	
PETROLEUM	
PERSONNEL	
ADMINISTRATION	<i>*</i>

OFFICIAL:

APPROVED:

E.S. BUSH
Brigadier General, AGO
Adjutant General

for
H.J. SERAID
Chief
Diplomatic Section

Info copies to:
G-4
COMNAVSTA
USFCLAD, Yokohama Branch

R/R: Discussed documentation at
conference with Col. Nash,
Cdr. Neale, and APL officials
in Dai Ichi Building.

JBP 26-8143

Handling and transmission of literal
plain text of this message as corres-
pondence of the same classification
has been authorized by the War Depart-
ment in accordance with the pro-
visions of paragraphs 16-C, 18-B, 54,
53-D (1) (2) (3), and 60-A (1) (2)
(3) (4), AR 380-5, 6 March 1946

INFORMATION COPY

SECRET



SECRET

China
340.02

100213

6-2230A

...all copies of this document are to be destroyed...
...the Department of Defense...
...the Department of Defense...
...the Department of Defense...

G-7

G-4 ROUTING	
<input type="checkbox"/>	A O'S G-4
<input type="checkbox"/>	D O'S G-4
<input checked="" type="checkbox"/>	EXECUTIVE
<input checked="" type="checkbox"/>	PLANS & POLICY
<input type="checkbox"/>	OPERATIONS
<input type="checkbox"/>	COST & FAD
<input type="checkbox"/>	SUPPLY
<input type="checkbox"/>	PETROLEUM
<input type="checkbox"/>	PERSONNEL
<input checked="" type="checkbox"/>	ADMINISTRATION



This document contains information of a confidential nature...

This copy is for...

INFORMATION COPY

...and the text of this message as correct...
...has been authorized by the War Relocation Authority...
...in accordance with the provisions of paragraphs 6-C, 18-A, 18-B, 18-C, 18-D (1) (2), and 18-A (1) (2) (3) (4). AR PRO-5, 6 March 1946.

SECRET

SECRET

GD P&P JEM/bs
9 March 1950

370.05
China

MEMORANDUM FOR RECORD:

SUBJECT: Conference - Shanghai Evacuation

1. A conference was held 9 Mar 50 with the following representatives present:

F. L. Rash, Colonel	G-4
B. Hamlett, Colonel	G-4
G. DeYoung, Lt. Col.	G-4
V. J. Meola, Lt. Cdr	COMNAVFE
J. E. McMahan, Capt.	G-4
John Hanus, Operations	APL
G. L. Danzey, Manager	APL
C. W. Gabrielsen, Mg. Dir.	APL
A. K. Aiken, Lt. Col.	G-4 Supply
James B. Pilcher	DS (State)

2. The entire problem of the evacuation from Shanghai was discussed and definite responsibilities assigned and agreed to by interested representatives. Colonel Rash emphasized that neither Army nor Navy has responsibility for the evacuation operation, and that responsibility was that of the State Dept., acting through its operating agent, American President Lines. APL and DS agreed to this statement.

3. COMNAVFE stated they would make the four LSTs available in Yokohama, without crews, cleaned and equipped for emergency passenger service, and that the Navy would provide emergency lifesaving equipment, necessary navigational equipment, and install emergency sanitary facilities sufficient to accommodate anticipated passenger load. Fuel for the voyage also would be provided by the Navy on a reimbursable basis.

4. G-4 representatives stated the Army would make available, if authorized by DA, cots, bedding, mess equipment, subsistence, and such other non-luxury stores and supplies as may be requested by APL representatives which are necessary for the welfare of the passengers and crews. It was emphasized that non-expendable supplies would be furnished APL on a loan basis with the proviso that supplies be returned in the same condition as when issued, with reimbursement in the event these conditions were not met. All expendable supplies would be furnished APL on a reimbursable basis.

5. APL representative was queried as to the exact supply requirements for the voyage. The following represents the detailed list of those items requested and assignment and acceptance of responsibility for provision of same:

a. Medical supplies. No firm requirement exists as yet. DS is awaiting reply from Shanghai in answer to DS query as to exact requirements. These requirements will be furnished G-4 Supply as soon as the message arrives. Included in Medical supplies was requirement for wire baskets for transferring litter patients from ship to shore. Two per LST will be furnished by Navy.

SECRET

G-4 File Copy

G-4 File Copy

SECRET

b. Water supply. Water capacity of each LST obtained from the Navy is 80,000 gallons. Navy will endeavor to move the LSTs to dock in Yokohama where potable water may be used to flush out the tanks and provide potable water supply for the voyage. In the event this cannot be done, G-4 Supply will compute requirement for supplies needed to chlorinate sufficient water for the voyage. 80,000 gallons is considered an adequate supply for the entire voyage. In the event APL should receive additional passenger requirements, Army will furnish additional water storage - probably 5-gallon containers. As an aid to dispensing the water supply on the vessels, Army will furnish lister bags, 4 per LST.

c. Tarpaulin covers. Navy will furnish 13 large tarpaulins to be used in covering automobiles and baggage placed on the decks.

d. Bunks for passengers. There are at present available 170 bunks per vessel, complete with blankets and pillows (provided by Navy). Army will furnish 230 cots per vessel, plus the following bedding supplies per vessel:

- (1) Pillow-cases - one per individual.
- (2) Sheets - two per individual.
- (3) Blankets - three per cot furnished by Army.

e. Bunks for crews. Army will furnish the following for the crew of 192 (all 4 LSTs):

Mattresses - 1 per individual.
Sheets - 4 per individual.
Pillow - 1 per individual.
Pillow-case - 2 per individual.
Mess Gear - 1 per individual
Towels & Soap - as required.
Canteen and
Canteen cup - 1 per individual.

f. Mess Gear. One per passenger, plus one canteen and canteen cup per passenger.

g. Other supplies, including toilet paper, soap and towels (paper) will be furnished by the Army. In addition, 4 GI cans will be furnished as trash receptacles (4 per vessel).

h. Subsistence will be furnished by the Army, based on three hot meals per day for the passengers, plus normal rations for the crews for the entire voyage. DS stated that there would be some small requirement for special diets for sick personnel to embark in Shanghai. However, the exact food requirement is not now known, and will probably be so small in quantity that it will not be referred to the Army for fulfillment. It was agreed that the Army would not be responsible for furnishing such special food supplies unless DS presents an exact requirement.

SECRET

SECRET

i. Kitchen utensils necessary to cook and serve the meals will be furnished by Army. It was suggested that the QM representative in charge of rations and utensils visit the LSTs in Yokohama to ascertain the requirements.

6. The above supplies will be block loaded for delivery to Yokohama. G-4 Supply will alert the QM Section to accomplish the above, and to be prepared on 12-hours notice, to be given by APL, to deliver dockside Yokohama, the above block loaded supplies. Exact location of the LSTs will be furnished G-4 by COMNAVFE.

7. After discussion of the above detailed list of supplies, a proposed radio to DA was presented, discussed, and concurred in, with minor modifications, by all representatives present.

8. Upon instructions from Gen. Eberle, Lt. Col. DeYoung discussed with Mr. Gabrielsen an agreement to be drawn up between Army and APL covering the points discussed in para 4. Mr. Gabrielsen agreed to sign such a document. This agreement will be drawn up by G-4 P&P and presented to APL and G-4 representatives for signature.

9. In the above discussion of responsibility for providing supplies, where the term G-4 or Army is used, G-4 Supply Division is responsible for coordinating procurement of supplies.

J.E.M. *JEM*

G.D. *GD*

F.L.R. *FLR*

3
SECRET

DECLASSIFIED

Authority NND 975029

GENERAL HEADQUARTERS FAR EAST COMMAND
G-4 STAFF SECTION
INFORMATION ROUTING SLIP

File No. _____ Date 9 March 50

SUBJECT: Conference - Shanghai Evacuation

Routing Date, Time & Order Initials

Gen. Eberle

①

ME

COL. Forsyth

FR

Executive

SPR

Plans & Policy

Operations

Constr & R E

Transportation

Supply

Petroleum

Personnel

Administration

2

my

Incls CHECKED

IN:

OUT:

ORIGINATOR: P&P

Approval

①

Concurrence

Information

①

Note & Return

Signature

Dispatch

File

list

2

JOURNAL NO: _____

REMARKS: _____



370105
China

GENERAL HEADQUARTERS
SUPREME COMMANDER FOR THE ALLIED POWERS

OUTGOING MESSAGE

DS/NJS/JBP/eja

CONFIDENTIAL

9 Mar 1950
No.: 17 to Shanghai

FROM: SCAP TOKYO JAPAN

TO: AMCONGEN SHANGHAI CHINA.....ROUTINE

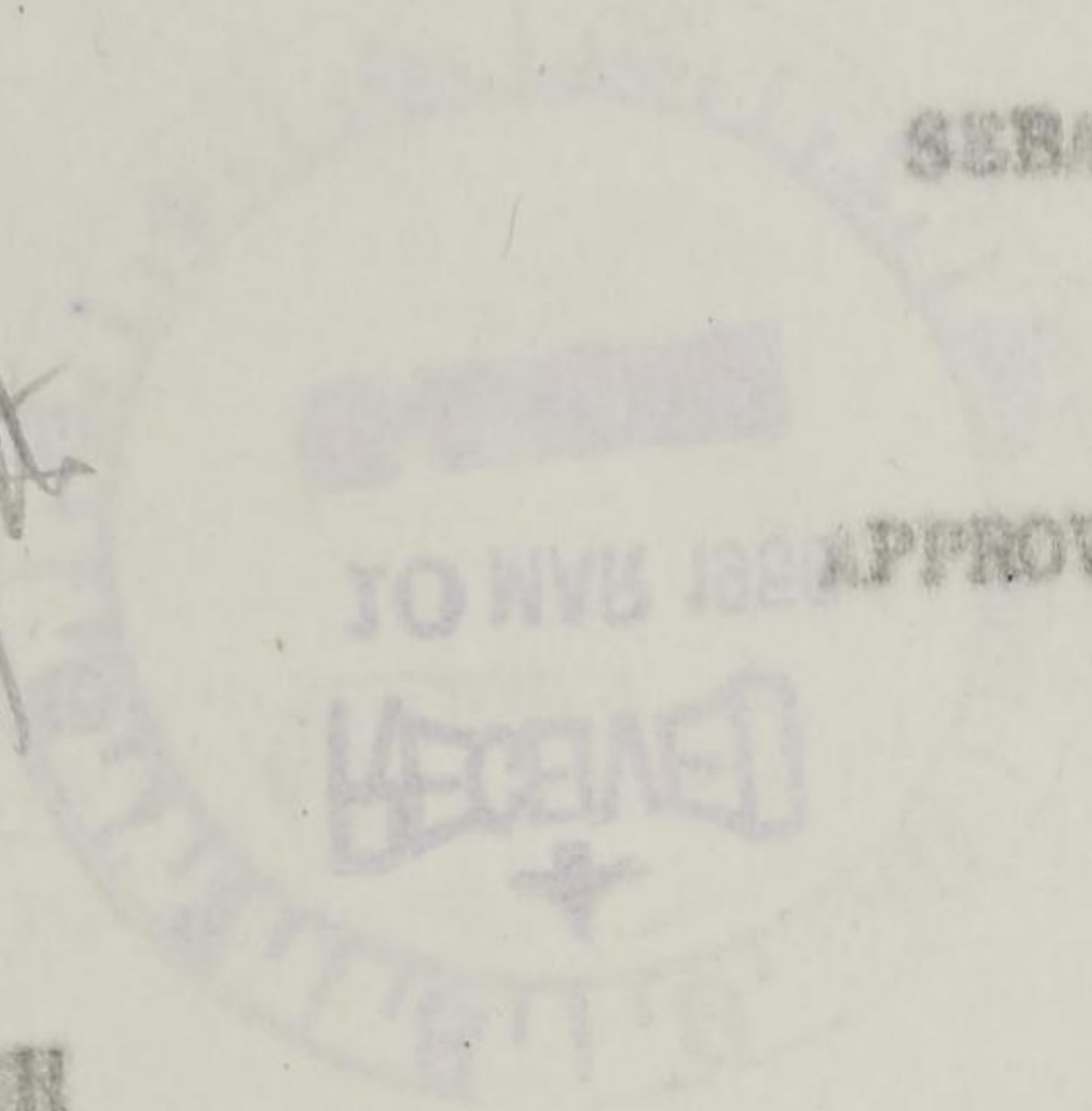
000839

C-55295

Your 62 March 3. APL requests that you please confirm immediately number doctors available at Shanghai for each of four vessels and ascertain what medical supplies and special foods should be put aboard vessels here. Will nurse be available for each vessel?

G-4 ROUTING	
A C/S G-4	
D AC/S G-4	
EXECUTIVE	
PLANS & POLICY	
OPERATIONS	
CONST. & FAC	
SUPPLY	
PETROLEUM	
PERSONNEL	
ADMINISTRATION	

CONFIDENTIAL



K.B.BUSH
Brigadier General, AGD
Adjutant General

W.J.SEBALD
Chief
Diplomatic Section

Info copies to:

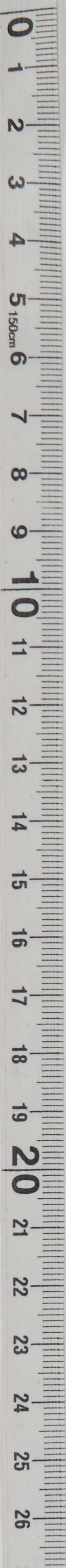
M/R: ---

G-4
SCAJAP (Cdr. Neola)

JBP 26-8143

Handling and transmission of literal plain text of this message as correspondence of the same classification has been authorized by the War Department in accordance with the provisions of paragraphs 16-C, 18-E, 53-A, 53-D (1) (2) (3), and 60-A (1) (2) (3) (4). AR 380-5, 1 FEB 1938

CONFIDENTIAL INFORMATION COPY



G-4

Handwritten notes:
12
10
9
8
7
6
5
4
3
2
1
0

GENERAL HEADQUARTERS
SUPREME COMMANDER FOR THE ALLIED POWERS

TO: HEADQUARTERS SHANGHAI CHINA...
FROM: 2547 TOKYO JAPAN
CONFIDENTIAL
DATE: 10 MAR 1950
000838

0-25292
All copies be available for each vessel?
Please confirm immediately number boats available at
Shanghai for each of four vessels and specify what medical
supplies and special foods should be put aboard vessels here.

RECEIVED
10 MAR 1950
B.I.B. (18)

ADMINISTRATION	
PERSONNEL	
PETROLEUM	
SUPPLY	
CONST & FAC	
OPERATIONS	
PLANS & POLICY	
EXECUTIVE	
U.S. G-4	
A.G. G-4	
G-4 ROUTE	

Chief
Shanghai Section

Major General
Assistant General

MAILED
MAR 9 1950
DIR SEC
S.C.A.P.

CONFIDENTIAL
INFORMATION COPY



SECRET

320.05
China

Capt. McMahan 26-6041

CS G-4	
D AC/S G-4	
EXECUTIVE	
PLANS & POLICY	<i>mw</i>
OPERATIONS	
CONST & FAC	
SUPPLY	
PETROLEUM	G-4

Shanghai Evacuation

9 MAR 1950

C/S

(1)

1. DA msg WX 80331 (Tab B) to CINCFFE, stated that Navy Department would repossess 4 LSTs now in use by SCAJAP and temporarily place them on loan to State Department, who will negotiate a contract with American President Lines to act as operating agent for State Dept., on a cost plus fixed-fee basis. DA emphasized that neither Army nor Navy is responsible for evacuation operation.

2. Basic msg (Tab B) also requested comments on the following:

a. Possibility of recruiting non-Japanese crews in Japan or Philippines.

b. Possibility of Army or Navy in Japan providing fuel for voyage and essential, but non-luxury, supplies for passenger comfort.

3. Non-Japanese crews are not available in Japan. On 9 Mar 50, APL representative in Japan received a communication from APL, Manila, stating that prospects are promising for recruitment of LSTs' crews in Philippines with the exception of Masters. APL, Japan, immediately transmitted this information to APL, San Francisco, and requested that SF office coordinate recruiting activity with the Manila office, and obtain masters for LSTs.

4. COMNAVFE plans to make the 4 LSTs available to APL in Yokohama, without crews, and cleaned and equipped for emergency passenger service. Navy will also provide emergency lifesaving equipment, necessary navigational equipment, and is installing emergency sanitary facilities. Fuel for the voyage will also be provided by Navy on a reimbursable basis.

5. APL representative, Japan, has requested, and if so authorized by DA, the Army can make available cots, bedding, mess, equipment, subsistence, and such other non-luxury stores and supplies as is necessary for welfare of passengers and crews during the voyage. Nonexpendable supplies will be furnished on a loan basis, with proviso that supplies will be returned in same condition as when issued, with a reimbursement in the event these conditions are not met. Expendable supplies, including subsistence and medical supplies, will be issued to APL on a reimbursable basis.

6. Proposed draft radio to DA (Tab A):

a. Submits CINCFFE comments relative to availability of crews in Japan and Philippines.

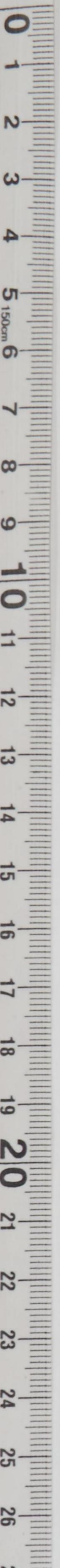
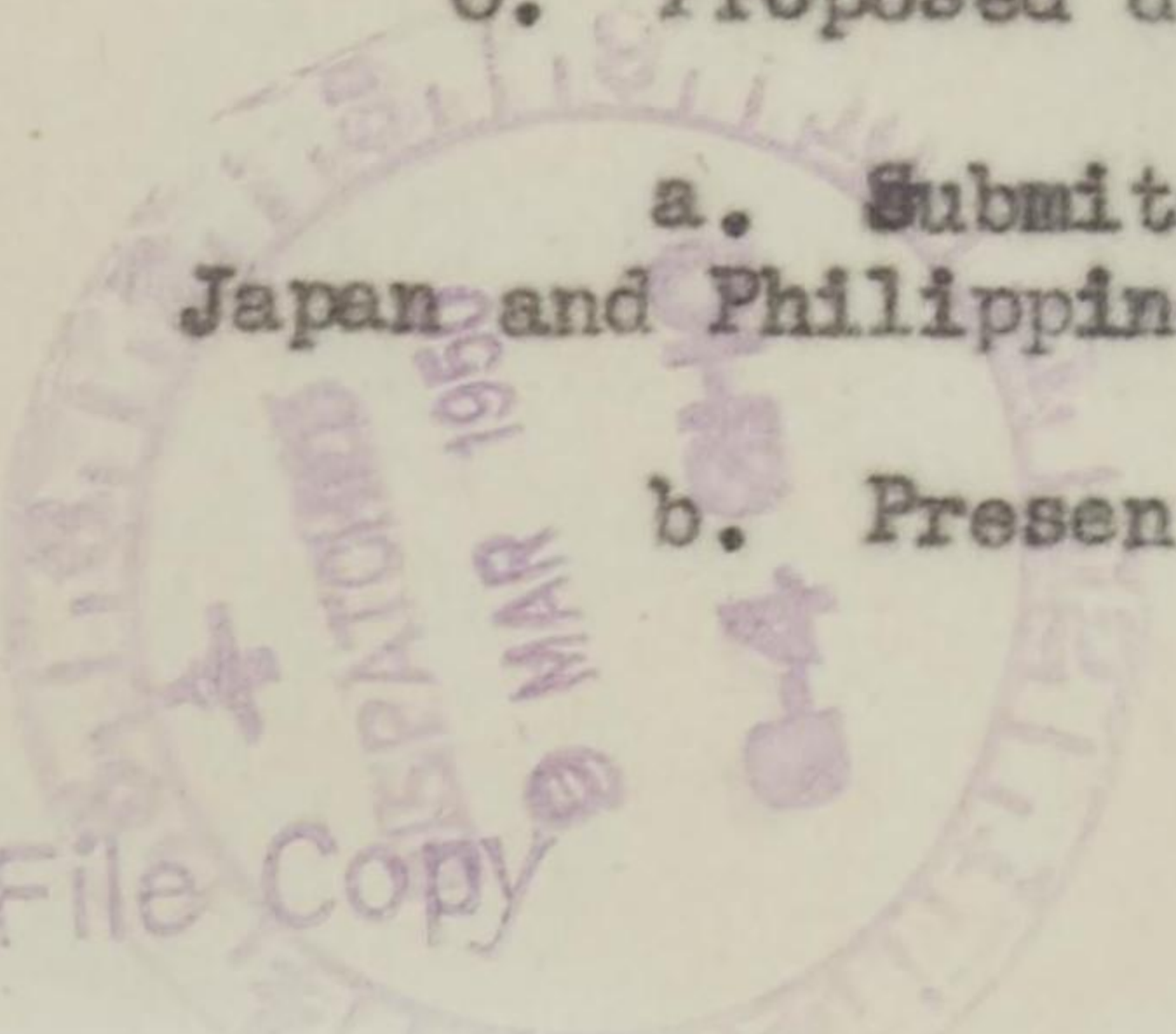
b. Presents a summary of Army and Navy plans for aiding APL.

G-4 File Copy

SECRET

(E) 2809
P4P

G-4 File Copy



SECRET

Capt. McMahan 26-6041

Shanghai Evacuation

G-4

C/S

(1)
Cont'd,

7. It is recommended that the proposed radio to DA (Tab A) be approved for dispatch and returned to G-4 for necessary action.

8. Initial concurrences indicated on first draft attached to Tab A:

a. Diplomatic Section---Mr. J. B. Pilcher

b. COMNAVFE --Cdr. Neola

c. APL --C. W. Gabrielson

2 Incls
Tab A
Tab B

-----G.L.E.-----

SECRET

SECRET

GD P&P JEM/bs
8 March 1950

MEMORANDUM FOR RECORD:

SUBJECT: Shanghai Evacuation.

1. Instant C/N to C/S self-explanatory.
2. Within policy.
3. Completes action on G-4 Journal No. 2809.

J.E.M. JEM
G.D. GD
F.L.R. FLR

SECRET

GENERAL HEADQUARTERS
FAR EAST COMMAND

OUTGOING MESSAGE GD P&P GD/ajs

SECRET

FROM: GINGFE TOKYO JAPAN
TO : DA WASH DC PRIORITY
INFO: COMNAVFE TOKYO JAPAN PRIORITY (COURIER)
CINCPAC PEARL HARBOR PRIORITY

For CSGPO. Urmsg WX 80331, 8 March 50. Subject is
^{three}
Shanghai Evacuation. This msg in ~~five~~ parts.

Part I. Availability non-Japanese crews. Non-Japanese crew members
unavailable in Japan. On 9 March, American President Lines representative
Japan received communication from APL representative Manila that prospects
are promising for recruitment LST crews ^{with exception of Master} in Philippines. APL Japan
immediately transmitted this info to APL San Francisco, and requested
that SF office coordinate recruiting activity with Manila office. *And obtain Masters.*

Part II. Planned Navy assistance to APL in Japan. Navy will make
available not to exceed 4 LSTs in Yokohama, without crews, cleaned and
equipped for emergency passenger service. Navy providing lifesaving equip-
ment ^{Necessary navigational equipment} and installing emergency sanitary facilities. Navy also providing
fuel on reimbursable basis.

Part III. Planned Army assistance to APL Japan. APL representative
Japan has requested, and Army plans to make available, subject to DA
authorization, to APL cots, bedding, mess equipment, subsistence, and such
other non-luxury stores and supplies as are necessary for ^{welfare of} passenger ^{+ crew}
welfare while aboard LSTs. Non-expendable supplies will be furnished

SECRET

SECRET

FROM: CINCPAC TO DA WASH DC CD P&P CD/ajs

on loan basis, with proviso that supplies will be returned in same condition as when issued with reimbursement required in event these conditions are not met. Expendable supplies, including subsistence and medical supplies, will be issued to AFL on reimbursable basis. *Authorization for issuance of supplies to AFL requested soonest.*

OFFICIAL:

APPROVED:

K. B. BUSH
Brigadier General, ACD
Adjutant General

G. L. EBERLE
Major General, General Staff Corps
Assistant Chief of Staff, G-4

CinC
C/S
G-1
G-2
G-3
AG
DS
Trans

SECRET

GENERAL HEADQUARTERS, FAR EAST COMMAND
ADJUTANT GENERAL'S OFFICE
RADIO AND CABLE CENTER

INCOMING MESSAGE

~~Secret~~
PRIORITY
Unclassified

PTS/rjs

G-4 ROUTING

A C/S G-4	
D AC/S G-4	
EXECUTIVE	<i>ma</i>
PLANS & POLICY	<i>ma</i>
OPERATIONS	
CONST & FAC	
PERSONNEL	
ADMINISTRATION	<i>ma</i>

FROM : DA (CSGPO) WASH DC

TO : CINCFE TOKYO JAPAN

INFO : COMNAVFE TOKYO JAPAN, CINCPAC PEARL HARBOR TH

NR : WX-80331

Refs:

- A. WX 80173.
- B. WX 80079.
- C. CX 55157.
- D. CX 55205.
- E. CX 55199.
- F. C 55203.

This msg in 3 parts and is for info and planning purposes.
 Part 1. Navy Dept will repossess LSTs temporarily place them on loan to State Dept. State Dept will negotiate contract with American President Lines to act as operating agent for State Dept. Latter underwriting operation on cost plus fixed fee basis. APL operation of LSTs included. APL will assemble crews, including airlift necessary crew members from US and will provide house flag. State Dept and APL notifying their representatives in Japan to consult at once on details re LSTs to include inspection if required to determine operating necessities. State Dept requests and Depts Army and Navy agree cooperation with State and APL. Representatives Japan in this connection. Agency contract between State and Apl to be negotiated here. Reemphasize while desire to assist in any way possible neither Army nor Navy responsible for or involved in evacuation operation for which target date tentatively set 18-20 March.

62015

(over)
PRIORITY

~~Secret~~
auth DRB #33
Unclassified

Consult Crypto-Center before declassifying.
 Paraphrase not required. Handle as correspondence of classification carried hereon per paragraphs 17 a (1) (2), and 41 c (2) (3), AR 380-5, 15 November 1949.

11

2809

Handling and transmission of literal plain text of this message as correspondence of the same classification has been authorized by the War Department in accordance with the provisions of paragraphs 16-C, 18-E, 53-A, 53-D (1) (2) (3), and 60-A (1) (2) (3) (4), AR 380-5, 6 March 1946.

COPY No.

Secret
PRIORITY

FROM : DA WASH DC NR : WX 80331 8 MAR 50 CONT'D

Part 2. Request you comment following: To avoid high cost of airlift crews from US, State queries possibility that some non-Japanese crew members may exist and be available in Japan or Philippine area for employment by APL for the LST voyage. Also in interest of meeting target date (State may request) that Army or Navy in Japan provide as available and on reimbursible basis fuel for voyage and essential but non-luxury stores and supplies for passenger comfort during voyage from Shanghai to rendezvous.

①
②
③
④

Part 3. REURAD C 55203, State Dept advises classification this operation and correspondence relating to it secret during conduct of arrangements with Chinese Nationalists and Communists for entry of LSTs to Shanghai. Contemplate reducing to unclassified when operation actually underway. Accordingly, WX 80079 and CX 55657 (NOTAL) hereby auth to be downgraded to secret. Similar classification will apply any dispatches following until operation downgraded by State Dept. However, no intention at this time of upgrading dispatches with lower classification.

NO SIG

ACTION : e-4

INFORMATION : COMMANDER IN CHIEF, CHIEF OF STAFF, G-1, G-2, G-3,
AG, DIPLOMATIC, TRANS

62015

PRIORITY

TOO : 080015 Z
MCN : 57685

Secret
-2-

GENERAL HEADQUARTERS, FAR EAST COMMAND
ADJUTANT GENERAL'S OFFICE
RADIO AND CABLE CENTER

G-4 ROUTING	
A C/S G-4	<input checked="" type="checkbox"/>
AC/S G-4	<input checked="" type="checkbox"/>
EXECUTIVE	<input checked="" type="checkbox"/>
PLANS & POLICY	<input checked="" type="checkbox"/>
OPERATIONS	<input type="checkbox"/>
CONST & FAC	<input type="checkbox"/>
SUPPLY	<input type="checkbox"/>
PETROLEUM	<input type="checkbox"/>
9 Mar 50	
PERSONNEL	<input checked="" type="checkbox"/>
ADMINISTRATION	<input checked="" type="checkbox"/>

4 photocopies forwarded

370.05 Secret China

INCOMING MESSAGE

FROM : CNO WASH DC

TO : COMNAVFE TOKYO JAPAN

INFO : CINCFE TOKYO JAPAN, CINCPAC OAHU TH, COM 7TH TASK FLT
PEARL HARBOR TH, COMNAVPHIL MANILA PI

NR : 082321 Z

Anticipate Navy may temporarily reposses 4 SCAJAP LSTs being readied by CINCFE for loan by Navy to State for further turnover to APL in order execute evacuation Shanghai as commercial enterprise. COMNAVPHIL 251810 Z Feb CINCFE 040437 Z, bar WX 80331 NOTAL refer. Navy not responsible for evacuation operation however desire you cooperate as practicable with State Army and APL representative on reimbursable basis in preparation for operation. In this respect and furnishing only crews and officers. Be prepared to make necessary acceptance and turnover inspections when directed.

NO SIG

INFORMATION : COMMANDER IN CHIEF, CHIEF OF STAFF, G-1, G-2, G-3, G-4, AG, DIPLOMATIC, TRANS

62483

ROUTINE

TOO : 082321 Z
MCN : 57730

Secret

Consult Crypto-Center before declassifying.
Paraphrase not required. Handle as correspondence of classification carried hereon per paragraphs 17 a (1) (2), and 41 c (2) (3), AR 380-5, 15 November 1949.
Paraphrase not required. Handle as correspondence of classification carried hereon per paragraphs 51i and 60a, AR 380-5.

GENERAL HEADQUARTERS, FAR EAST COMMAND
ADJUTANT GENERAL'S OFFICE
RADIO AND CABLE CENTER

INCOMING MESSAGE

APP copies forwarded.

370.05 China

Secret
PRIORITY

G-4 ROUTING	
A C/S G-4	
D AC/S G-4	
EXECUTIVE	
PLANS & POLICY	
OPERATIONS	
CONST & FAC	
WG/1J1	
SUPPLY	
PETROLEUM	
9 Mar 50	
PERSONNEL	
ADMINISTRATION	

FROM : STATE DEPT WASH DC

TO : SCAP (USPOLAD) TOKYO JAPAN

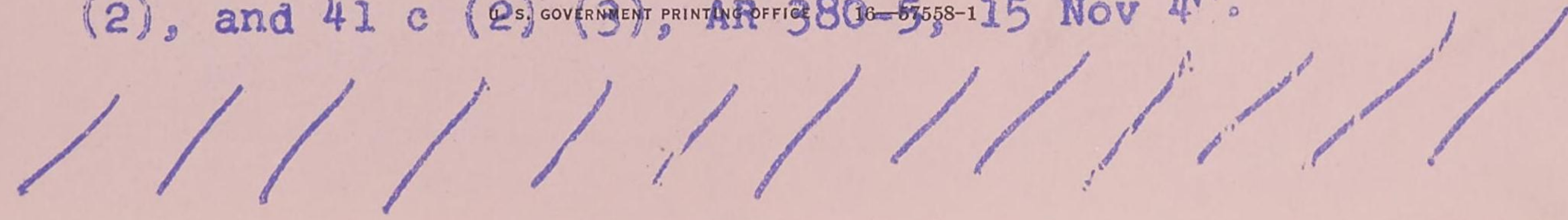
NR : 091034 Z (SENT SCAP TOKYO FOR USPOLAD RPTD BY STATE INFO CHIEF OF STAFF) (STATE SVC MARCH 9, 5 AM SIGNED ACHESON RELAYS FROM SHANGHAI SIGNED MCCONAUGHY-SENT DEPT 1013 RPTD MANILA 45 TAIPEI 241 HONG KONG 118 RPTD USPOLAD TOKYO 82 FROM SHANGHAI DATED MARCH 9, 1 PM) (BOOK MSG)

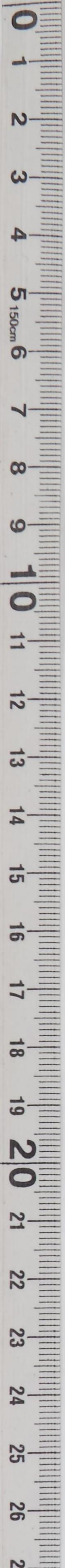
"Re Shai evac plan. Time is rapidly running out. To rendezvous with Gen Gordon on March 10 LSTs must leave Shai on 19 Just 10 days from today. Our estimate time required LST voyage from Yokohama to Shai dock 5 days. No tickets can be sold by APL and customs has refused to pass any effects until name of LST on which to be shipped is entered on documents. It is not merely a matter of getting LSTs to Shai in time to connect with Gordon. There is much work to be done here before their arrival. APL and CONGEN most urgently req the foll:

1. Confirmation that first 2 LST will arrive at Shai in time load baggage and passengers and connect Gordon.
2. Confirmation that one will have facilities for carrying 700 persons including women and children. QQQ number of that LST. (APL in applying for entry of ships is using QQQ numbers as names.) Also require QQQ number of LST to carry baggage to ship since individual application must be made for each ship.
3. Amount of fares to Japan and US. APL has a big job yet selling tickets.
4. Info including QQQ number as soon as possible on third LST which would take cargo direct to Japan inward passengers are expected to embark Gen Gordon at Hong Kong. 62605

(over)
PRIORITY
Secret

Consult Crypto-Center before declassifying.
Paraphrase not required. Handle as correspondence of classification carried hereon per paragraphs 51c and 60a, AR 380-5.
(2), and 41 c (2) (3), AR 380-5, 15 Nov 40.





62605

TOO : 091034 Z
MCN : 57740

PRIORITY
Secrecy
-2-

ACTION : DIPLOMATIC
INFORMATION : COMMANDER IN CHIEF, CHIEF OF STAFF, G-2, G-3,
G-4, TRANS

First LST to rendezvous would bring in these passengers
from Gordon (Fleming, McConaughy).

FROM : STATE DEPT WASH NR : 091034 Z 9 MAR CONT'D

PRIORITY
Secrecy

GENERAL HEADQUARTERS, FAR EAST COMMAND
ADJUTANT GENERAL'S OFFICE
RADIO AND CABLE CENTER

*370.05
China*

INCOMING MESSAGE

Restricted
ROUTINE

G-4 ROUTINE	
A C/S G-4	
AC/S G-4	
EXECUTIVE	
PLANS & POLICY	
OPERATIONS	
CONST & FAC	
SUPPLY	
PETROLEUM	
PERSONNEL	
ADMINISTRATION	<i>X</i>

9 Mar 50

FROM : DA (CSGLD/D 5) WASH DC
TO : CINCFE TOKYO JAPAN
NR : W 80352

State Dept advised by US Consul Gen Peiping China that fol radio equip accepted under custodial rec from Da Lang Sch during Jul 49 can be evac at est cost of packing and shipping \$500. State Dept proposes evac prop to Japan and DA concurs:

- Transmitters:
- 2 BC-619 (E),
 - 3 BC-610,
 - 2 BC-191,
 - 1 RA-22.

Collins-transmitter-receiver:
1 VHF.

- Receivers:
- 1 BC-779 B,
 - 1 RAO-5,
 - 2 BC-324 N,
 - 17 R-100,
 - 3 SLR-F,
 - 5 others various types.

Included also misc meters, tester, whip antennae, etc. Rqst citation funds to cover packing and shipping costs be cited direct to US Consul Gen.

NO SIG

ACTION : COMPTROLLER

INFORMATION : G-4, DIPLOMATIC, SIGNAL, TRANS
62219 ROUTINE

T00 : 082033 Z
MCN : 57703

Restricted

Consult Crypto-Center before declassifying.
Paraphrase not required. Handle as correspondence of classification carried hereon per paragraphs 17 a (1) 21, and 41 c (2) (3) AR 380-5 15 November 1949
Paraphrase not required. Handle as correspondence of classification carried hereon per paragraphs 517 and 60a, AR 380-5.

GENERAL HEADQUARTERS
FAR EAST COMMAND
CONFIDENTIAL
CHECK SHEET

372.05
China

(Do not remove from attached sheets)

File No:

Subject: Shanghai Evacuation

Colonel Rash 26-6455
Date: 8 March '50

Note
No.

From: G-4

To: C/S

(1)

1. DS (Mr. Pilcher) informed G-4 (Colonel Rash) that he had obtained information from Mr. Gabrielson (Tokyo Representative of APL) that a commercial telegram had been received from the APL home office in the U.S. in substance as follows:

"The State Department has agreed to a general agency agreement with APL on a cost plus fixed fee basis for the evacuation of Shanghai. State will insure crews and passengers but not the hulls as they are U.S. property. State will fly crews to Yokohama. Mr. Gabrielson was directed to get in touch with State and Navy in Far East and proceed with further arrangements."

2. DS (Mr. Pilcher) reports that COMNAVFE (Comdr. Meola) is arranging for APL to inspect LST's this afternoon.

3. It appears now that the evacuation will be completed during March but that the appointed rendezvous with APL liner Gordon on 20 March must be delayed.

4. Security (Confidential) has by the above telegram no doubt been compromised.

G. L. E.

2803

NOTED
BY G/S
M/B

G-4 ROUTING

- A C/S G-4 *M/B*
- D AC/S G-4
- EXECUTIVE
- PLANS & POLICY *3PR*
- OPERATIONS
- CONST & FAC
- PLY
- PETROLEUM
- PERSONNEL
- ADMINISTRATION *3*

CONFIDENTIAL

3

S-4 JN NO

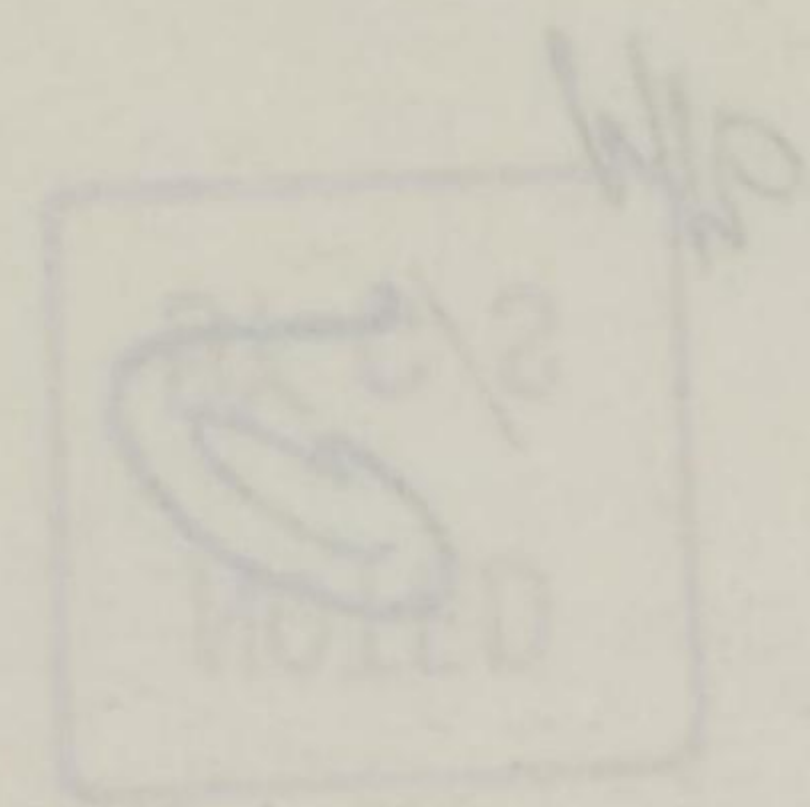
2813

REC VGO FORM NO 31

RECD SGS Date 3/8/50 Time 1730

3813

CONFIDENTIAL



no doubt been compromised.
 1. Security (Confidential) has by the above referred
 action on 20 March 1950 been delayed.
 2. It appears now that the election will be completed
 in accordance with VFR to transfer this afternoon.
 3. DS (Mr. Fletcher) reports that COMNAV (Comdr. Moore)
 with the above arrangements.
 4. The State Department has agreed to a General
 as follows:
 received from the VFR home office in the U.S. in accordance
 representative of VFR) that a complete report had been
 received obtained information from Mr. Carleton (Tokyo
 1. DS (Mr. Fletcher) informed C-4 (Colonel Mann) that

(1) NO. 1016 FROM: C-4 TO: C/S DATE: 8 March 1950

File No: Subject: TRANSPORT DEPARTMENT

(Do not remove from attached sheets)

CHECK SHEET
 CONFIDENTIAL
 GENERAL HEADQUARTERS

Handwritten notes:
 3/8/50
 1813

