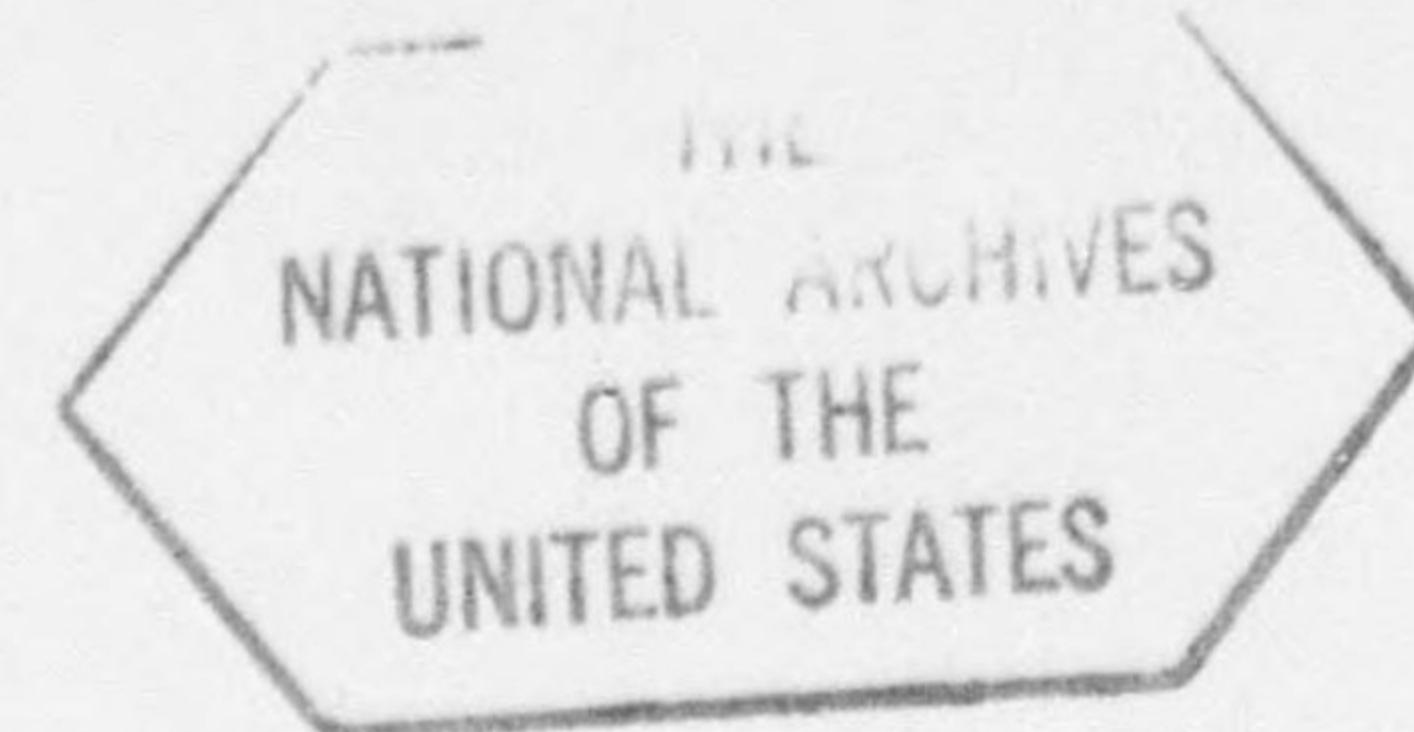


GHQ/SCAP Records(RG 331)
Description of contents



- (1) Box no. 3307
- (2) Folder title/number: (38)
Communications

(3) Date: ?

(4) Subject:

Classification	Type of record
633	p

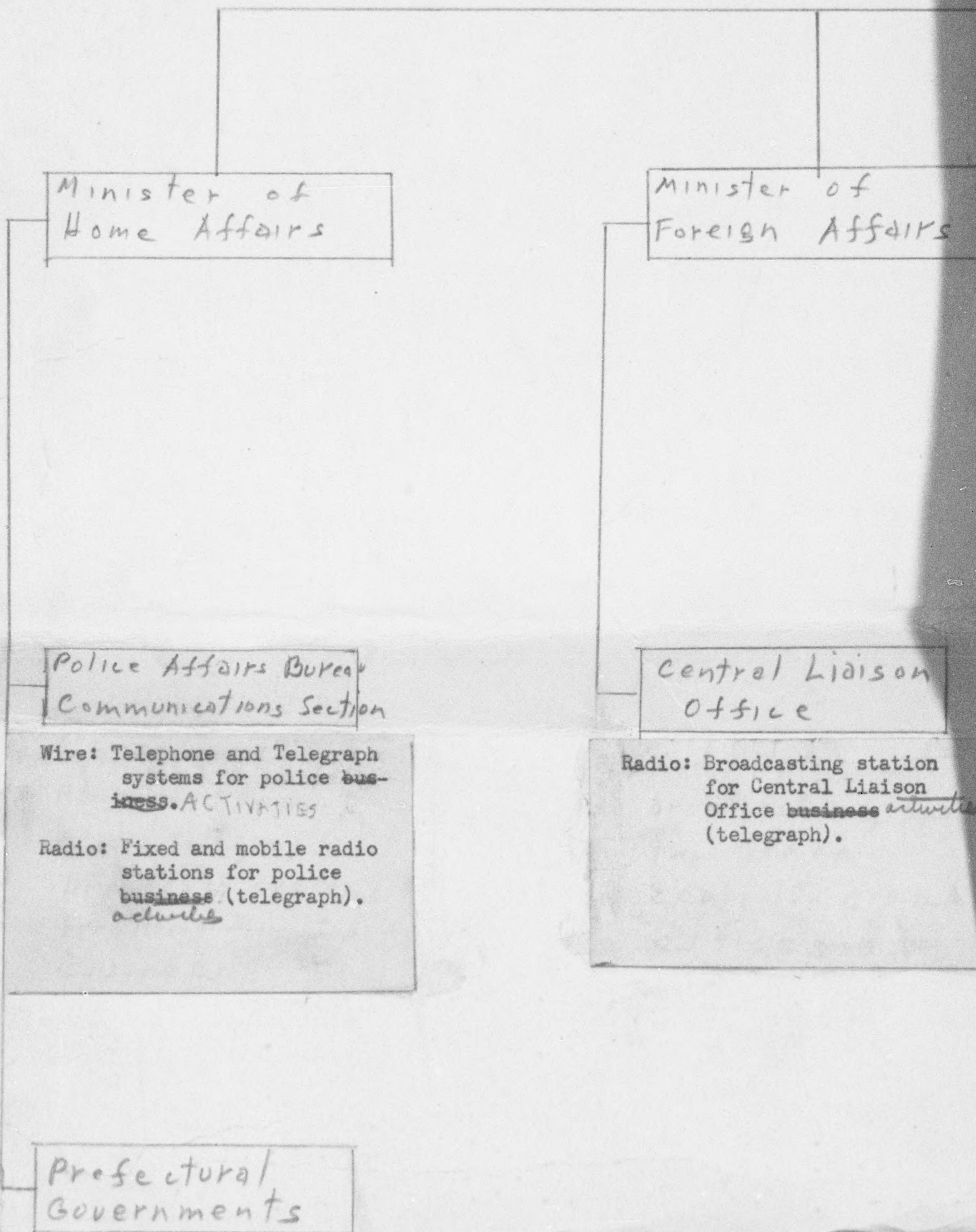
(5) Item description and comment:

(6) Reproduction: Yes No

(7) Film no. _____ Sheet no. _____

JAPANESE COMMUNICATIONS

GO



COMMUNICATIONS AGENCIES CONCERNED

30 SEPT 1946

GOVERNMENT

AGENCIES

CABINET

Minister of
Foreign Affairs

Minister of
Communications

Postal: Public mail, postal savings, deposits, postal savings transfer, postal life insurance, and life annuity, and money order services.

Wire: Public telephone and telegraph systems. (International only to Korea).

Radio: Fixed radio stations engaged in domestic and international public correspondence (telephone and telegraph). Radio stations for news broadcasts (telephone and telegraph). Relay stations for broadcast programs. Coastal radio stations engaged in communications with ships (telegraph). Radio quadrant-and-flight channel, homing beacon, and fixed stations (telegraph) operated for Occupational Air Forces. Fixed station for standard frequency and time signals.

Central Liaison
Office

Broadcasting station for Central Liaison Office ~~business~~ activities (telegraph).

CONCERNED WITH OPERATIONS

IES

Demobilization Board

Communications Section

Radio: Fixed and coastal stations for repatriation and demobilization messages and for communications with mine sweeping vessels (telegraph).

Min Tr

Ra EI

Wire: T

Com

Radio:

Comm

Radio: Co
fo
wi

Light

ons
al
ans-
in-
in-
order
and
y to
ns
ic and
ic
lephone
adio
broad-
nd
sta-
pro-
dio
com-
hips
quad-
annel,
fixed
a) op-
onal
sta-
re-
nals.

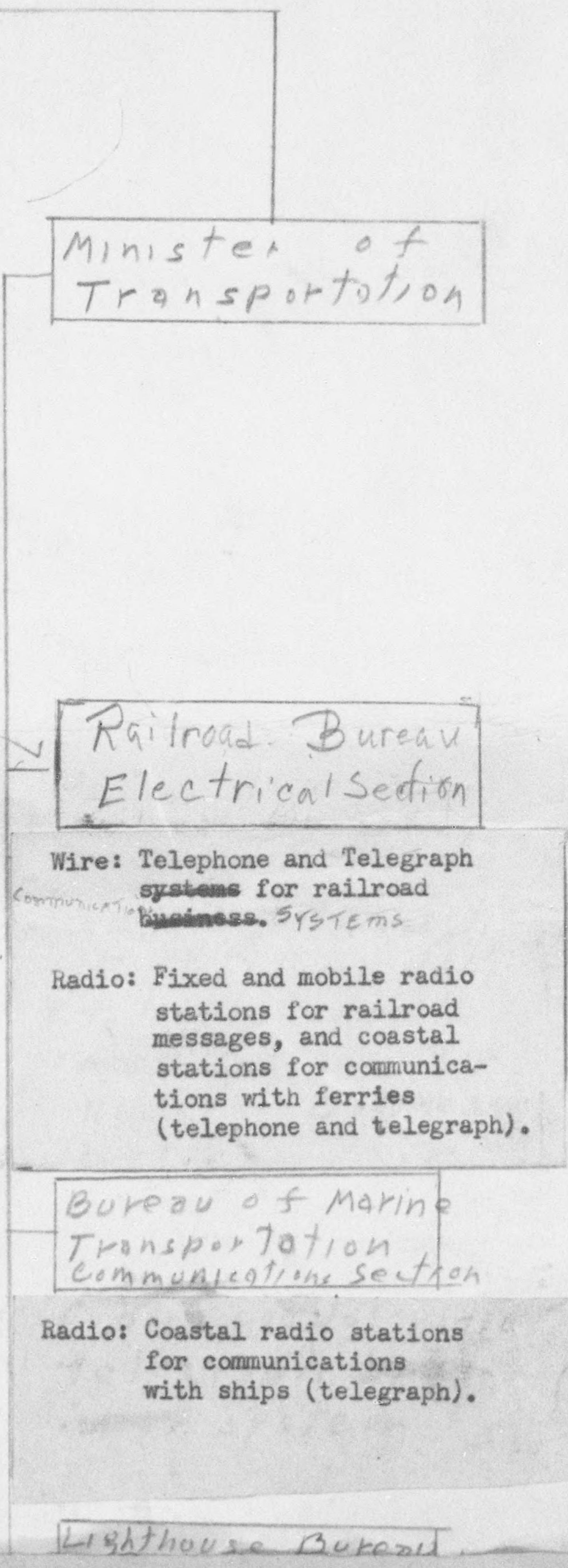
Min Tr
Ra EI
Wire: T
Com
Radio:
Comm
Radio: Co
fo
wi
Light

ATIONS

on

S

es
eep-
graph).



Minister of Transportation

Railroad Bureau Electrical Section

Wire: Telephone and Telegraph systems for railroad business. SYSTEMS

Radio: Fixed and mobile radio stations for railroad messages, and coastal stations for communications with ferries (telephone and telegraph).

Bureau of Marine Transportation Communications Section

Radio: Coastal radio stations for communications with ships (telegraph).

Lighthouse Bureau

Radio: 17 coastal radio stations for communications with fishing craft and 1 for communications with Japanese shipping (telegraph).

PR

5 fishing guilds
+ 1 fishing company

Radio: Coastal radio Stations for private communications with fishing vessel (telegraph).

Power Companies

Wire: Telephone systems for private communications

International Tele-
communications Co.
(Controlled by Min. of Com.)

Wire: Furnishes cable facilities to the Ministry of Communications on a contract basis.

Radio: Furnishes ^{short wave} radio facilities to the Ministry of Communications and the Broadcasting Corp. of Japan on contract basis.

PRIVATE

AGENCIES

anies

s for
ations

Broadcasting
Corporation of
Japan

Radio: Broadcasting stations including relay stations for dissemination of broadcasting programs.

Press Assns.
& Newspapers

Wire: Telephone systems for collecting news.

Radio: Radio stations for ~~collection~~, distribution and broadcasting of news reports (telegraph).

WIRELESS
SECTION

Radio: Radio-beacon
direction-
stations
navigation
radio station
lighthouse
tion (tele

General Cen
Meteorologic
Observat

RADIO ~~Wireless~~ Di

Wire: Telephone and
systems for c
and dissemina
weather inform

Radio: Fixed radio
the collecti
semination o
formation (t

Press Assns.
Newspapers

Telephone systems for
collecting news.

Radio stations for
~~collection~~, distri-
bution and broad-
casting of news re-
ports (telegraph).

Miscellaneous
Industrial
Companies

Radio: 1 fixed and 3 coastal
stations for private
correspondence.
(telegraph)

Private Rail

Wire: Telephone and tel
systems for priva

~~Wireless & Meteorological~~
Section

Radio: Radio-beacon and direction-finding stations for marine navigation and fixed radio stations for lighthouse administration (telegraph).

General Central
Meteorological
Observatory

RADIO ~~Wireless~~ DIVISION

Wire: Telephone and Telegraph systems for collection and dissemination of weather information.

Radio: Fixed radio stations for the collection and dissemination of weather information (telegraph).

Miscellaneous
Industrial
Companies

Radio: 1 fixed and 3 coastal stations for private correspondence. (telegraph)

Private Railroads

Wire: Telephone and telegraph systems for private use.

PRIVATE SECRETARY

PARLIAMENTARY
COUNCILLOR

PARLIAM
VICE MI

MINISTER'S SECRETARIAT

SECRETARY'S
SECTION

ARCHIVES
SECTION

INSPECTION
SECTION

BUILDING & REPAIR
DIVISION

NAVIGATIONAL AIDS
DIVISION

GENERAL AFF
BUREAU

TOKYO BUREAU OF
COMMUNICATIONS

OSAKA BUREAU OF
COMMUNICATIONS

NAGOYA BUREAU OF
COMMUNICATIONS

HIROSH
CO

ORGANIZATION CHART
JAPANESE MINISTRY OF COMMUNICATIONS

PRIVATE SECRETARY

MINISTER OF COMMUNICATIONS

PARLIAMENTARY
SPEAKER

PARLIAMENTARY
VICE MINISTER

VICE MINISTER

ELECTRICAL
LABORATORY

SECRETARIAT
INSPECTION
SECTION

STAFF BUREAUS AND DIVISIONS

OFFICE
AIDS

GENERAL AFFAIRS
BUREAU

TELECOMMUNICATIONS
BUREAU

TELECOMMUNICATIONS
ENGINEERING BUREAU

POSTAL
BUREAU

OPERATING BUREAUS AND DIVISIONS

TOYOTA BUREAU OF
COMMUNICATIONS

HIROSHIMA BUREAU OF
COMMUNICATIONS

MATSUYAMA BUREAU OF
COMMUNICATIONS

KUMAMOTO BUREAU OF
COMMUNICATIONS

SENDAI BUREAU OF
COMMUNICATIONS

ORGANIZATION CHART

MINISTRY OF COMMUNICATIONS

TELECOMMUNICATIONS DIVISION

TELECOMMUNICATIONS DIVISION

ELECTRICAL RESEARCH LABORATORY

HIGHER COMMUNICATIONS TRAINING SCHOOL

CONTROL WIRELESS TRAINING SCHOOL

DIVISIONS

TELECOMMUNICATIONS ENGINEERING BUREAU

POSTAL BUREAU

ELECTRIC WAVES BUREAU

SUPPLIES BUREAU

DIVISIONS

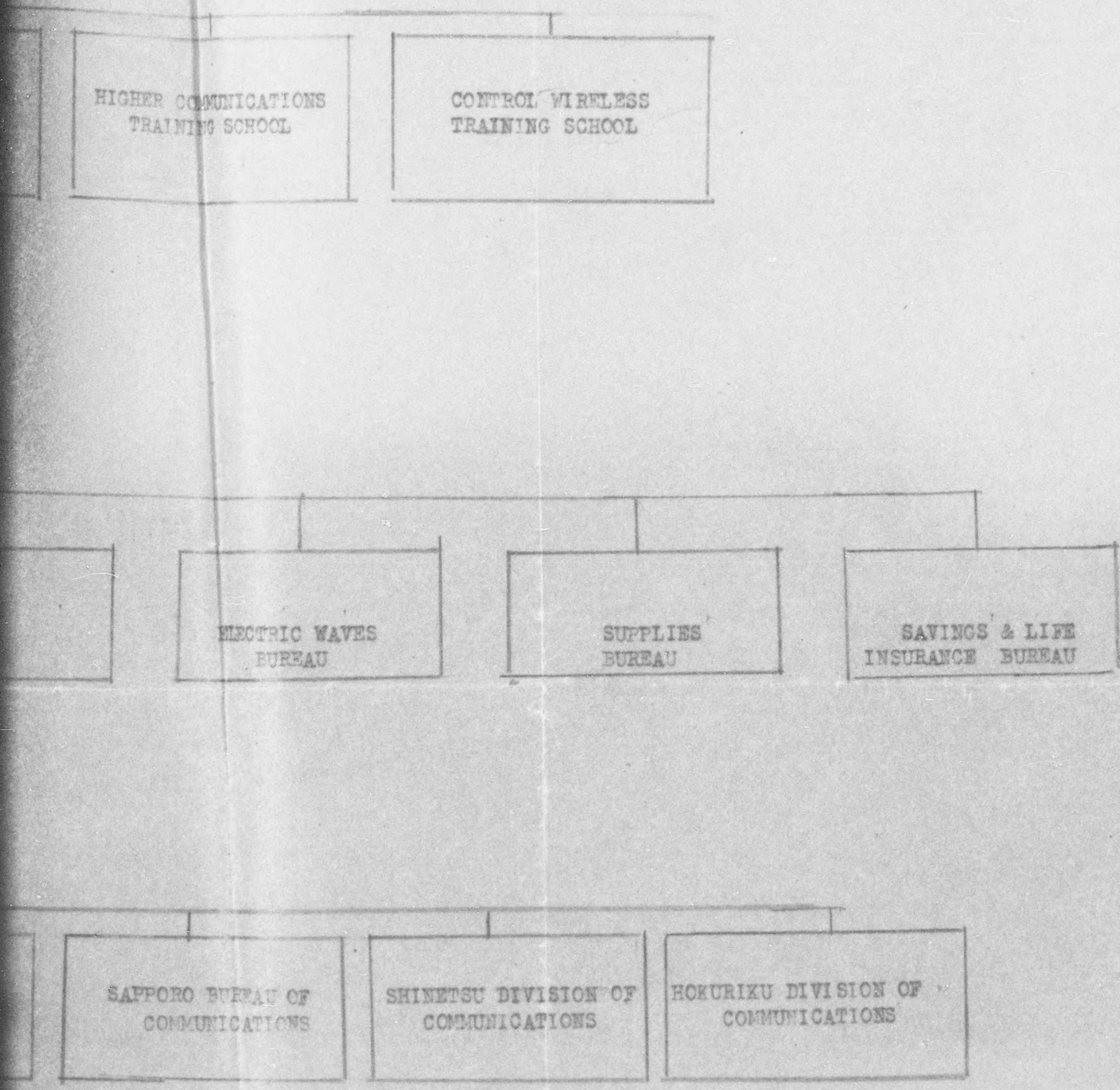
TELECOMMUNICATIONS BUREAU OF COMMUNICATIONS

SENDAI BUREAU OF COMMUNICATIONS

SAPPORO BUREAU OF COMMUNICATIONS

SHINETSU DIVISION OF COMMUNICATIONS

HOKURIKU DIVISION OF COMMUNICATIONS



HIGHER COMMUNICATIONS
TRAINING SCHOOL

CONTROL WIRELESS
TRAINING SCHOOL

ELECTRIC WAVES
BUREAU

SUPPLIES
BUREAU

SAVINGS & LIFE
INSURANCE BUREAU

SAPPORO BUREAU OF
COMMUNICATIONS

SHINETSU DIVISION OF
COMMUNICATIONS

HOKURIKU DIVISION OF
COMMUNICATIONS

ORGA JAPANESE BOA

	President's	Secretariat	
Building & Repair Division	Secretary's Section	Archives Section	Inspection Section
H. NAKAYAMA (48-1161 Ext. 591)	T. KANAMARU (48-1501)	Y. MATSUI * (48-0723)	M. OGASAWARA (48-1504)

Custodian Section
K. KANEKO
(48-0861)

General Affairs
Bureau
K. SUZUKI
Director (48-1505)

Telecommunications
Bureau
T. CHO
Director (48-1515)

Planning Section
H. KOSAKA
(48-1161 Ext. 460)

General Affairs
Section
S. MIZUTANI
(48-0817)

General Affairs
Section
Y. HORI
(48-1161 Ext. 172)

Maintenance Section
R. NAKADA
(48-0048)

Accounts Section
T. SHIRANE
(48-1161 Ext. 100)

Telephone Section
H. YAMAMOTO
(48-1518)

Welfare Section
H. YASUHARA

Telegraph Section
S. YAMAGISHI *

ORGANIZATION CHART

JAPANESE BOARD OF COMMUNICATIONS

Board of Communications
 Dr. S. MATSUMAE
 President (48-1500)

Vice President
 T. SHINTANI (48-0066)

Inspection Section
 M. OGASAWARA
 (48-1504)

Telecommunications Bureau
 T. CHO
 Director (48-1515)

Telecommunications Engineering Bureau
 Dr. N. SHINOHARA
 Director (48-1533)

Postal Bureau
 Y. KOIKE
 Director (48-0372)

General Affairs Section
 Y. HIRI
 (48-1161 Ext. 172)

General Affairs Section
 T. FUKAGAWA
 (48-1526)

Service Section
 H. MORIYA *
 (48-1161 Ext. 181)

Telephone Section
 H. YAMAMOTO
 (48-1518)

City Telephone Engineering Section
 S. SUZUKI
 (48-1531)

Transport Section
 K. MAEDA
 (48-1517)

Telegraph Section
 S. YAMAGISHI *

Long Distance Cable Engineering Section
 T. NAKAO

Foreign Posts Section
 H. MORIYA *

COMMUNICATIONS

Private Secretary
Y. MUKAI
(48-0012)

Electrical Research
Laboratory
Dr. S. KOMAGATA
Director (49-3141)

Higher Communications
Training School
T. TSUDA
Director (Kunitachi
71 Dial 117)

Control Wireless
Training School
W. TSURUTA
Director (49-1110)

Electrical Waves
Bureau
Y. MIYAMOTO
Director (48-0351)

Supplies Bureau
I. HAYASHI
Director (48-1851)

Savings & Life
Insurance Bureau
Y. OKAI
Director (48-0380)

Administrative
Section
H. SHO
(48-0667)

Adjustment Section
N. YOKOTA
(48-0815)

General Affairs
Section
H. KOIZUMI
(48-1571)

Electric Wave Section
T. AMISHIMA
(48-0096)

Wireless & Cable
Section
T. NEGORO
(48-1161 Ext. 351)

Enhancement Section
K. YAMAMOTO
(48-1580)

Standard Wave
Section

Apparatus & Equipment
Section

Account Section

(48-0048)

(48-1161 Ext. 100)

(48-1518)

Welfare Section

H. YASUHARA

(48-1161 Ext. 120)

Telegraph Section

S. YAMAGISHI *

(48-0011)

Health Section

Dr. T. HASEGAWA

(48-1161 Ext. 90)

Foreign Telecommu-
nications Section

S. YAMAGISHI *

(48-1524)

Labor Section

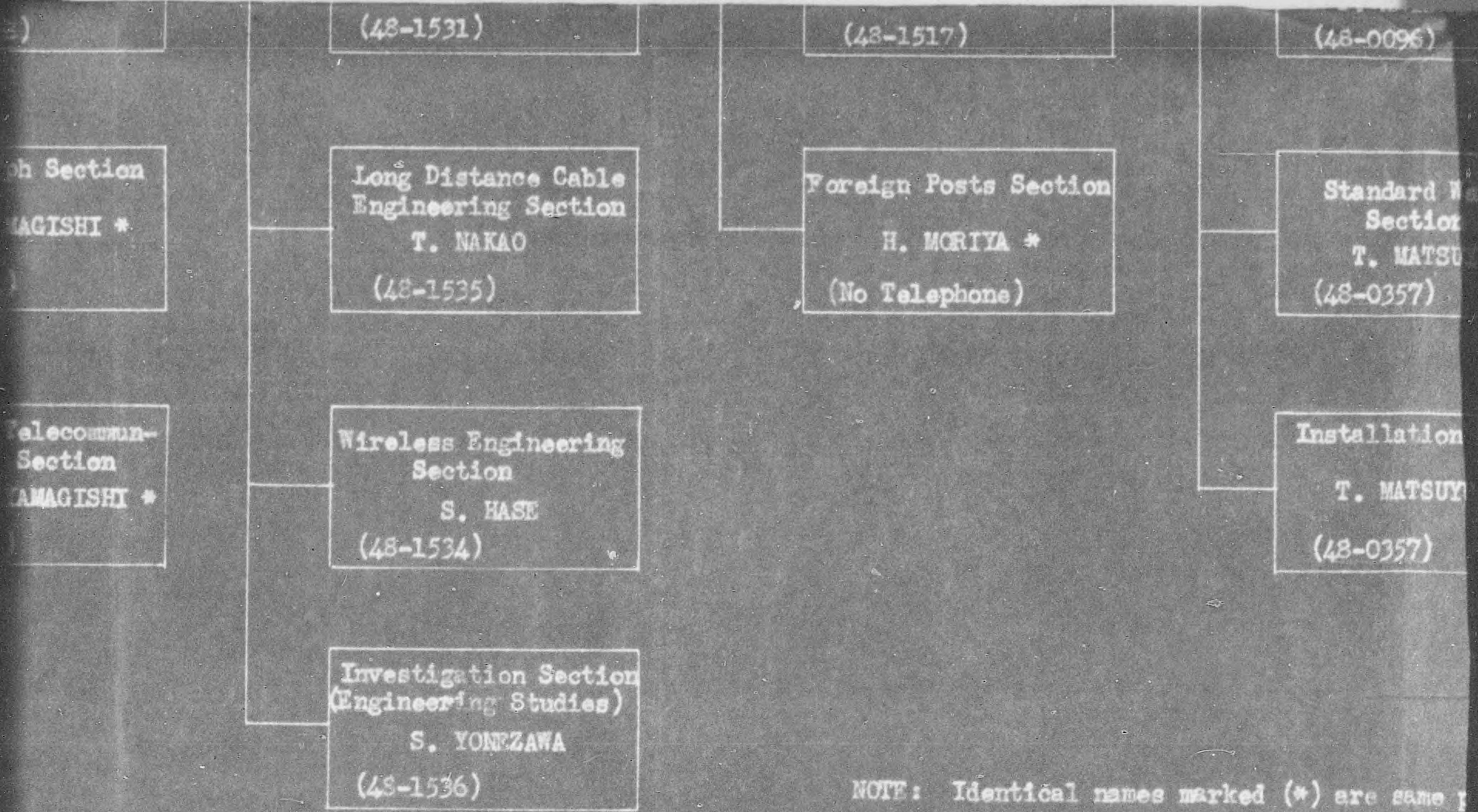
K. KUSENOSE

(48-1161 Ext. 140)

Liaison Section

T. SHIRAO

(48-0731)



NOTE: Identical names marked (*) are same

(48-0096)

T. NEGRO
(48-1161 Ext. 351)

K. IASAWOTO
(48-1580)

Standard Wave
Section
T. MATSUYUKI *
(48-0357)

Apparatus & Equipment
Section
F. SHIRASAKI
(48-1161 Ext. 344)

Account Section
K. KUMON
(48-1583)

Installation Section
T. MATSUYUKI *
(48-0357)

Postal Supplies
Section
S. ARAFUNE
(48-1161 Ext. 150)

Savings Section
K. KATO
(48-1161 Ext. 411)

Vehicles & Engine
Section
No Assignment

Life Insurance
Section
S. OTSUKA
(48-1161 Ext. 474)

Distribution Section
M. ITANO
(48-1161 Ext. 155)

Funds Operation
Section
K. NARIMATSU
(48-1589)

Repairs Shops
Section
T. SASAKI
(Okikubo 5764 Dial
117)

Actury Section
K. NAKAMURA
(43-0861)

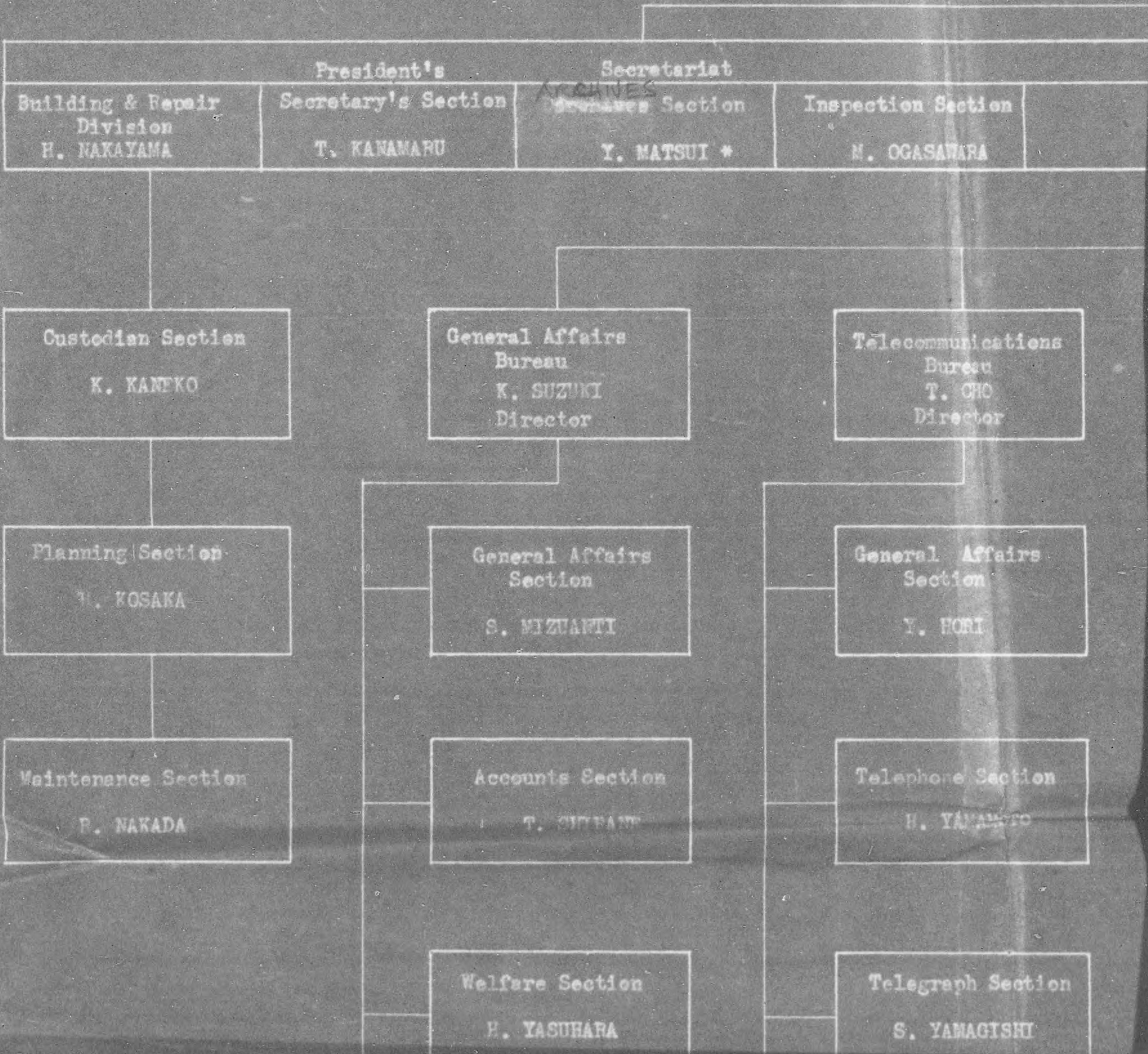
Names marked (*) are same person.

4	12 MAR 46	Revisions By BFC
3	22 FEB 46	Rev. By B. of C.
2	7 JAN 46	
1		
ISSUE	DATE	REVISIONS

**ORGANIZATION CHART
JAPANESE BOARD OF COMM.
GHQ
SCAP-CIVIL COMMUNICATIONS SECTION
PREPARED BY
TEL. & TEL. DIVISION**

ORC

JAPANESE



ORGANIZATION CHART JAPANESE BOARD OF COMMUNICATIONS

Board of Communications
Dr. S. MATSUMAE
President

Ministry of Communications

Ministry of Communications
Department of Communications

Vice President
T. SHINTANI

Section Section
M. OGASAWARA

Telecommunications
Bureau
T. CHO
Director

Telecommunications
Engineering Bureau
Dr. N. SHINOHARA
Director

Postal Bureau
Y. KOIKE
Director

General Affairs
Section
Y. HORI

General Affairs
Section
T. FUKAGAWA

Service Section
H. MORIYA *

Telephone Section
H. YAMAGUCHI

City Telephone
Engineering Section
S. SUZUKI

Transport Section
K. MAEDA

Telegraph Section
S. YAMAGISHI

Long Distance Cable
Engineering Section
T. NAKAO

Foreign Posts
Section
H. MORIYA *

Private
Y.

Electrical
Lab
Dr.
D.

Electrical
B.
Y.

Admin

Electrical

Stat

ART MUNICATIONS

Private Secretary

Y. MUKAI

Electrical Research
Laboratory
Dr. S. KOMAGATA
Director

Higher Communications
Training School
T. TSUDA
Director

Control Wireless
Training School
M. TSURUTA
Director

Electrical Waves
Bureau
Y. MIYAMOTO
Director

Supplies Bureau
I. HAYASHI
Director

Savings & Life
Insurance Bureau
Y. OKAI
Director

Administrative
Section
H. SHO

Adjustment Section
N. YOKOTA

General Affairs
Section
H. KOIZUMI

Electric Wave
Section
M. AMASHIMA

Wireless & Cable
Section
T. NFGORA

Enhancement
Section
K. YAMAMOTO

Standard Wave
Section
M. HANOHISHI

Apperatus & Equip-
ment Section
S. SHITEASAKI

Account Section
K. KUMON

Maintenance Section

P. NAKADA

Accounts Section

T. SHIRAI

Telephone Section

H. YAMAMOTO

Welfare Section

H. YASUHARA

Telegraph Section

S. YAMAGISHI

Health Section

Dr. T. HASEGAWA

Foreign Telecommu-
nications Section

S. YAMAGISHI *

Labor Section

K. KUSENOSE

Liaison Section

Section
AMANO

City Telephone
Engineering Section
S. SUZUKI

Transport Section
K. MAEDA

Section
T. NAKA

ph Section
MAGISHI

Long Distance Cable
Engineering Section
T. NAKAO

Foreign Posts
Section
H. MORIYA *

Standard W
Section
T. MATSUYU

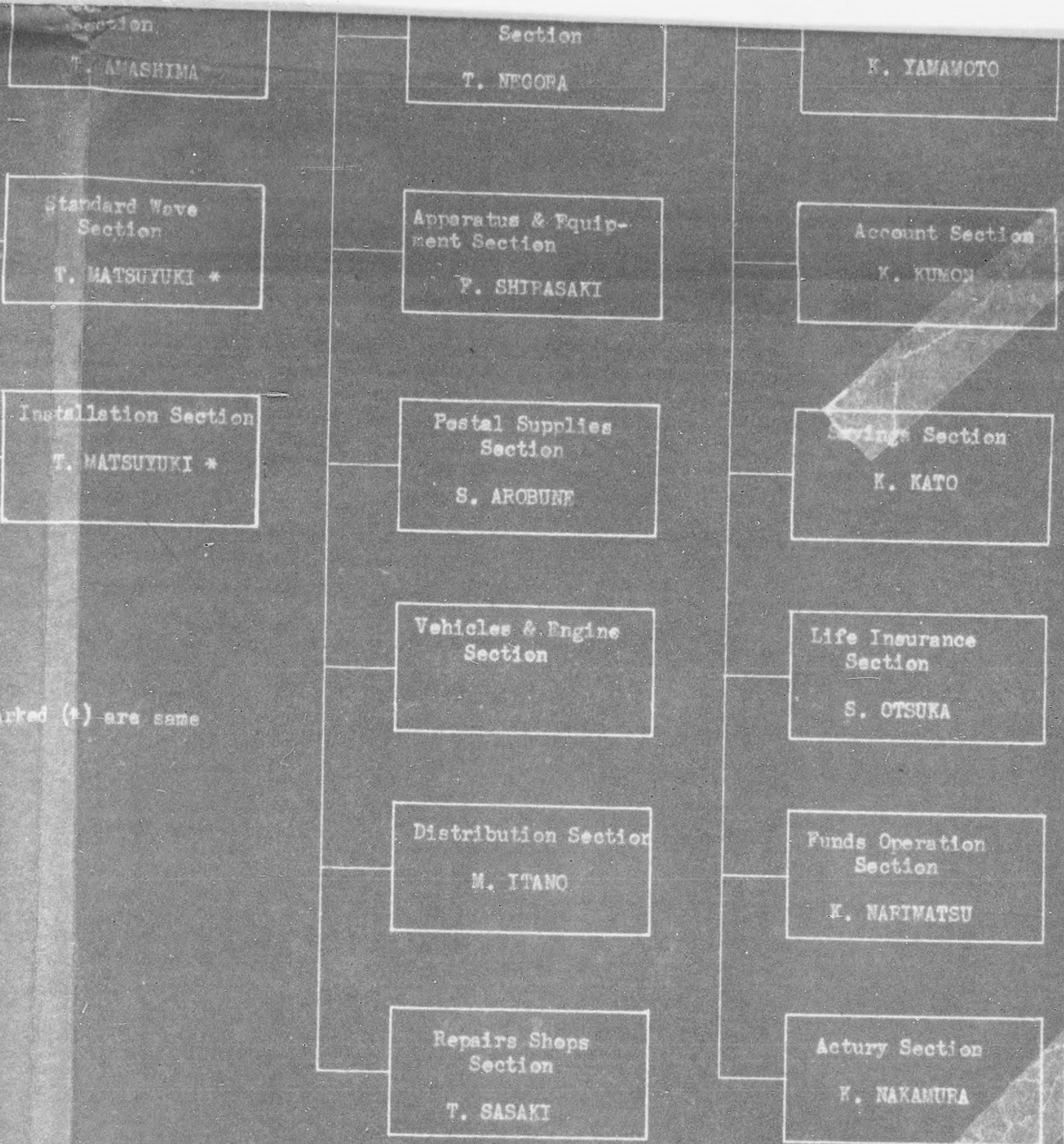
Telecomm-
ons Section
MAMAGISHI *

Wireless Engineering
Section
S. HASE

Installation
T. MATSUYU

Investigation Section
(Engineering Studies)
S. YONEZAWA

NOTE: Identical names marked (*) are same person.



Local names marked (*) are same on.

3	22 FEB. 46	REV. BY B. OF C.
2	7 JAN. 46	
1		
ISSUE	DATE	REVISIONS

ORGANIZATION CHART
JAPANESE BOARD OF COMMUNICATIONS
 GHQ
 SCAP - CIVIL COMMUNICATIONS SECTION
 PREPARED BY
 TELEPHONE & TELEGRAPH DIVISION

TITLE TELEPHONE IN SERVICE

Base Data

PERIOD COVERED 1947

ITEM	UNIT	TOTAL	31 JAN	28 FEB	MAR	APR	MAY	JUN	JUL	AUG	SEP	OCT	NOV	DEC
PERCENT GAIN IN TELEPHONES IN SERVICE														
Tokyo	%		+ 0.96	+ 1.17										
Osaka	"		+ 1.50	+ 0.14										
Nagoya	"		+ 1.03	+ 1.56										
Kumamoto	"		+ 1.27	+ 0.81										
Sendai	"		+ 2.08	+ 1.75										
Hiroshima	"		+ 1.54	+ 1.18										
Sapporo	"		+ 0.40	+ 0.54										
Shinetsu	"		- 1.11	+ 0.63										
Hokuriku	"		+ 1.47	+ 0.98										
Matsuyama	"		+ 0.95	+ 1.47										
All Japan	"		+ 1.10	+ 0.90										
TELEPHONE IN SERVICE PER 100 POPULATION														
Tokyo	Per 100 Pop.	POPULATION 16,005,741	1.67	1.70										
Osaka	"	10,628,951	2.17	2.18										
Nagoya	"	7,995,002	1.23	1.24										
Kumamoto	"	10,548,232	0.79	0.79										
Sendai	"	8,177,895	0.83	0.84										
Hiroshima	"	6,211,947	1.00	1.03										
Sapporo	"	3,438,913	1.70	1.70										
Shinetsu	"	4,355,046	1.21	1.22										
Hokuriku	"	1,809,866	1.66	1.68										
Matsuyama	"	3,879,672	0.60	0.60										
All Japan	"	73,110,815	1.34	1.35										

SOURCE: Ministry of Communications, Telephone and Telegraph Bureau, Telephone Section.

TITLE Telephone in Service (Total Phones)

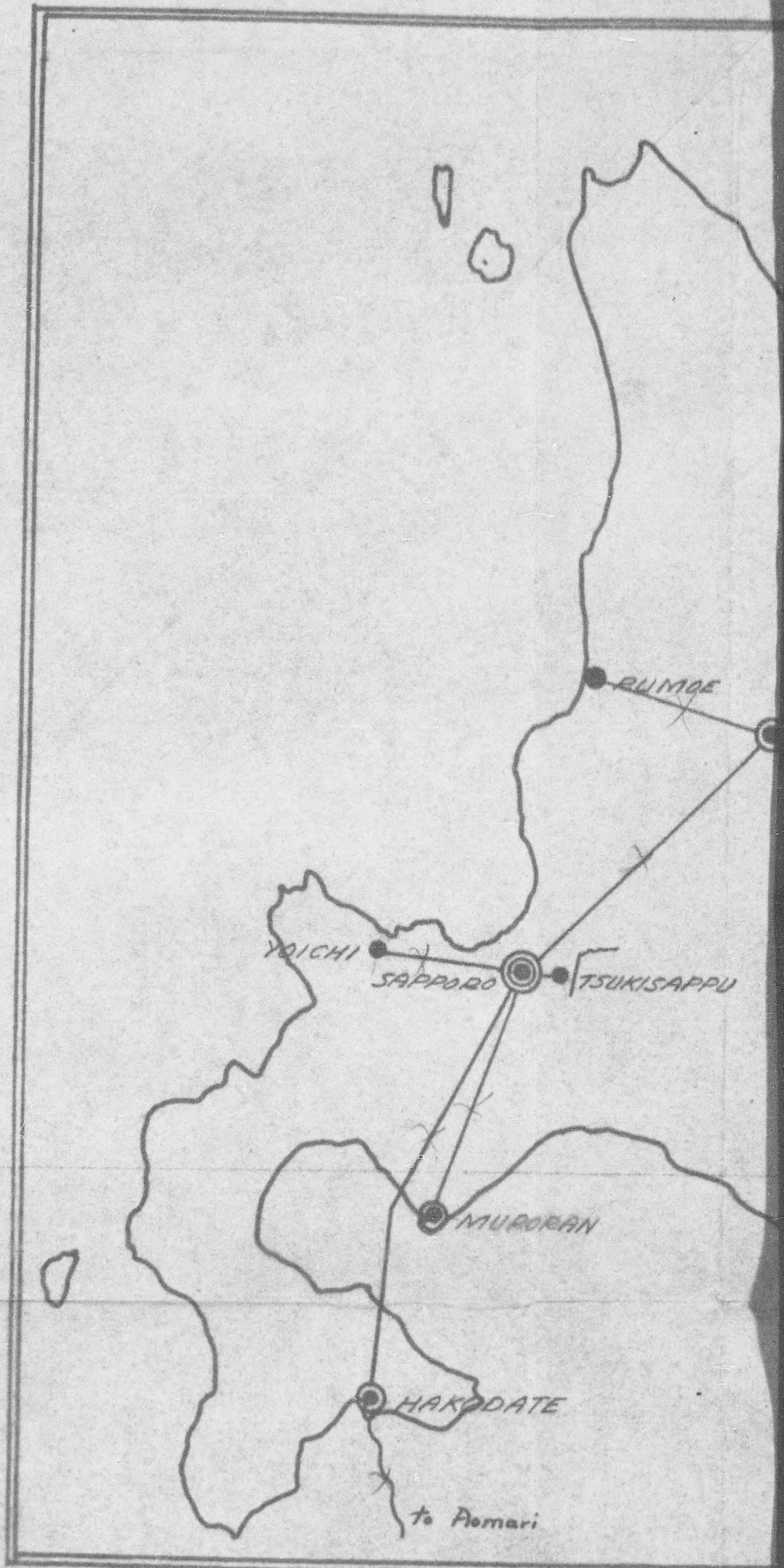
Base Data

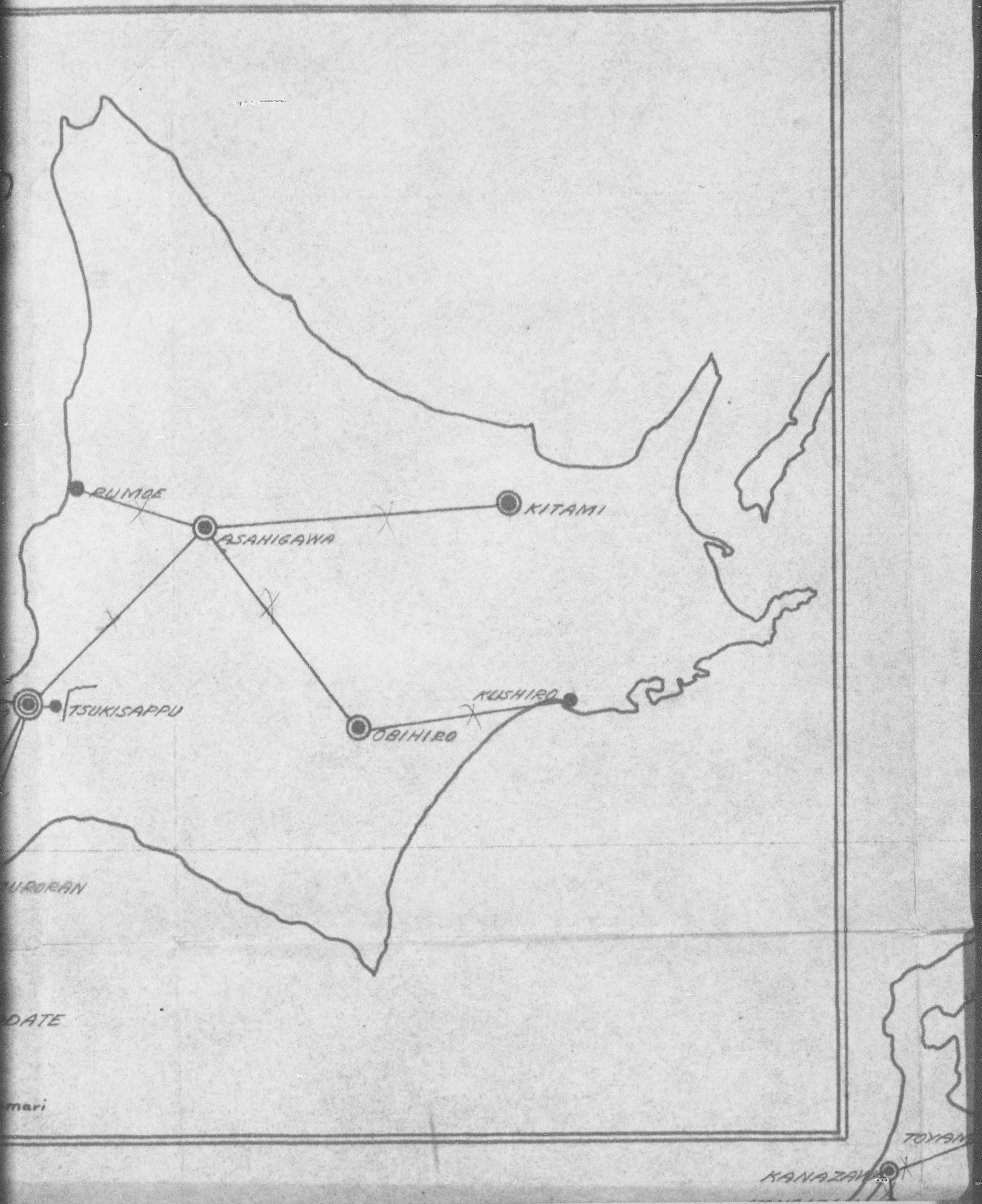
PERIOD COVERED _____

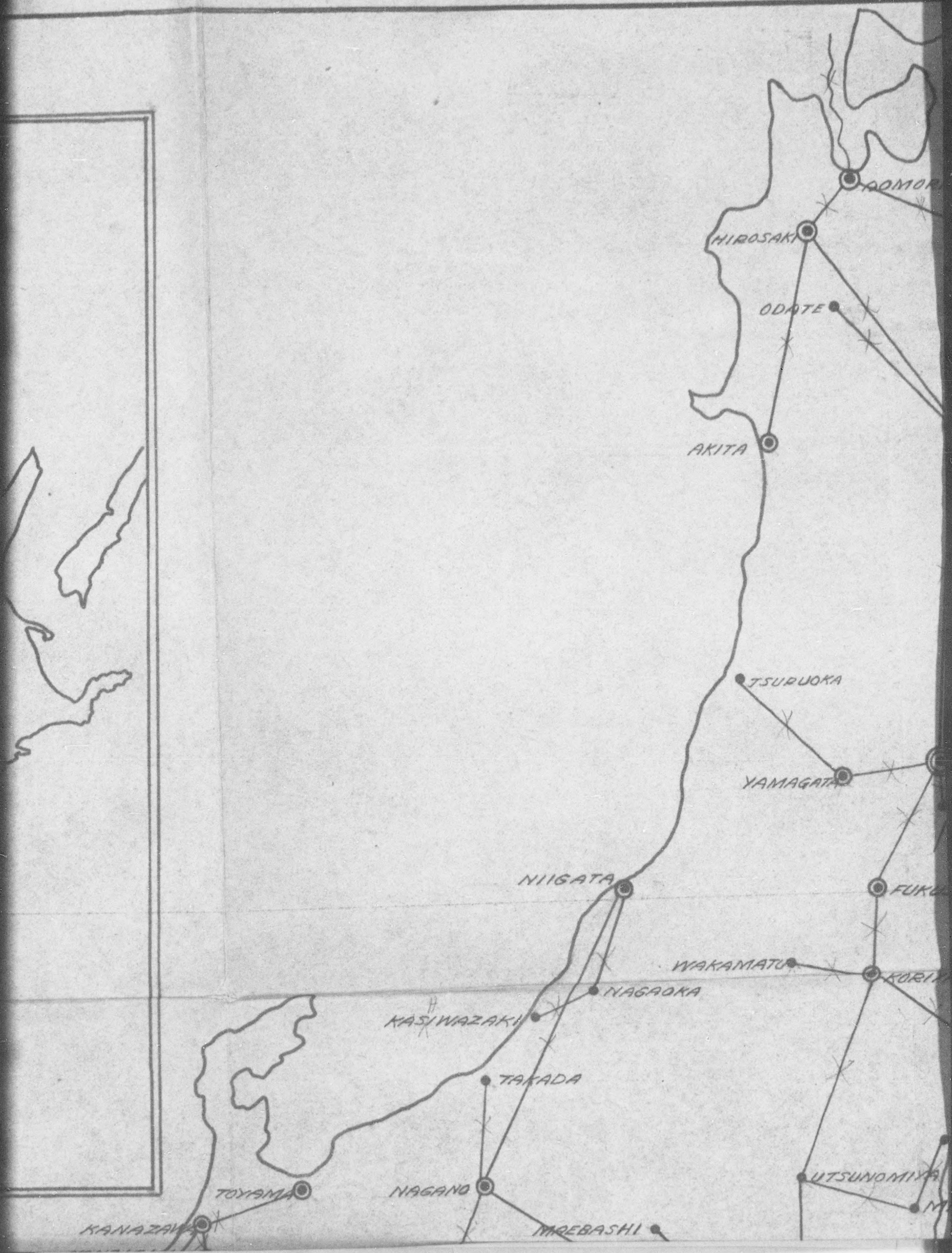
ITEM	UNIT	TOTAL	JAN	FEB	MAR	APR	MAY	JUN	JUL	AUG	SEP	OCT	NOV	DEC
<u>Telephone in Service</u>			<u>8</u>											
<u>1946</u>	<u>ea.</u>		<u>837,798</u>	<u>849,341</u>	<u>863,663</u>	<u>815,568</u>	<u>828,964</u>	<u>838,194</u>	<u>878,016</u>	<u>885,598</u>	<u>920,604</u>	<u>946,283</u>	<u>957,253</u>	<u>968,239</u>
<u>1947</u>	<u>ea.</u>		<u>978,897</u>	<u>987,710</u>	<u>1,003,673</u>	<u>1,013,087</u>	<u>1,026,955</u>	<u>1,036,728</u>	<u>1,049,086</u>	<u>1,072,772</u>	<u>1,090,426</u>	<u>1,109,282</u>	<u>1,132,890</u>	
<u>1948</u>	<u>ea.</u>													

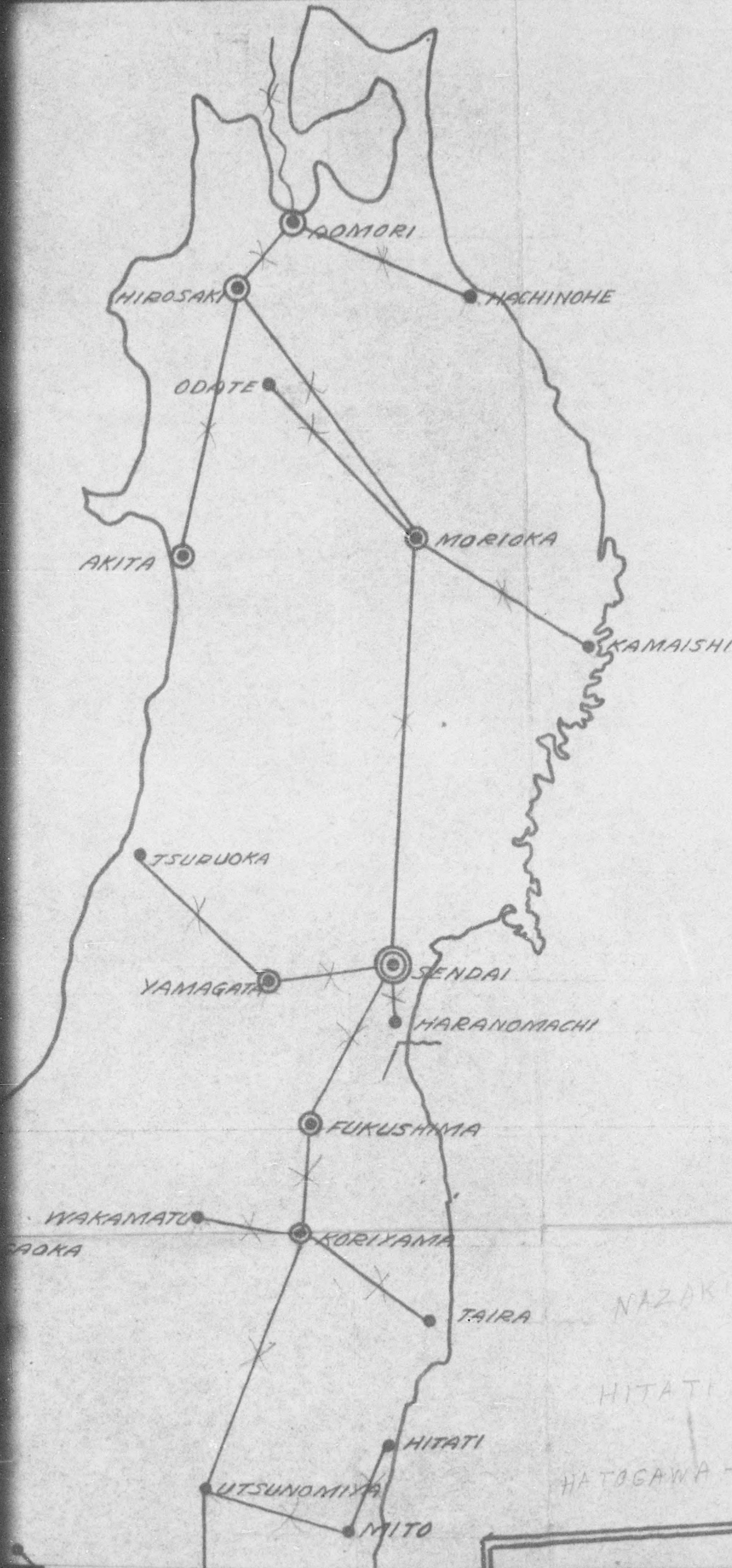
SOURCE: Ministry of Communications

#17









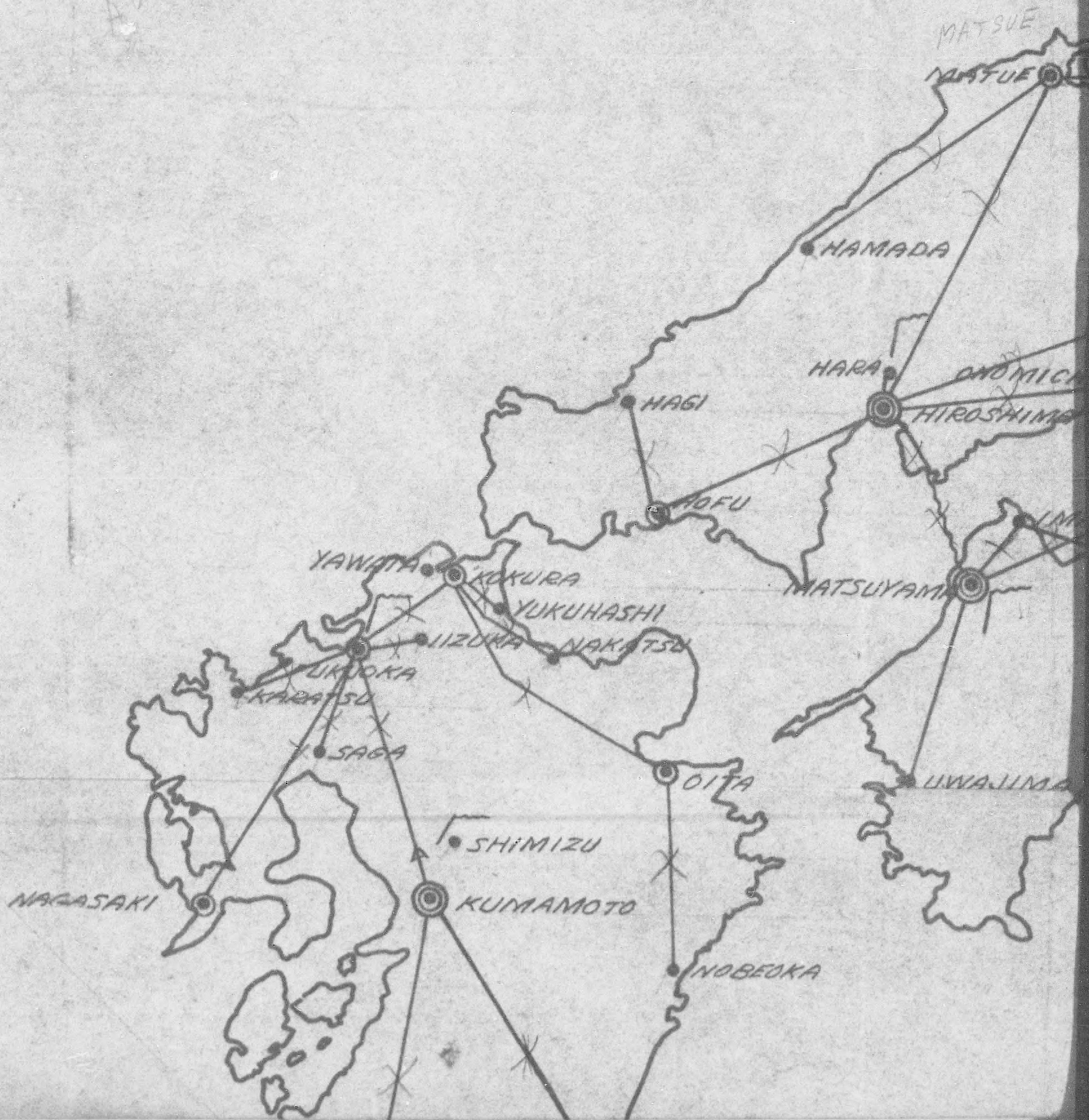
NAZOKI - NEZAKI

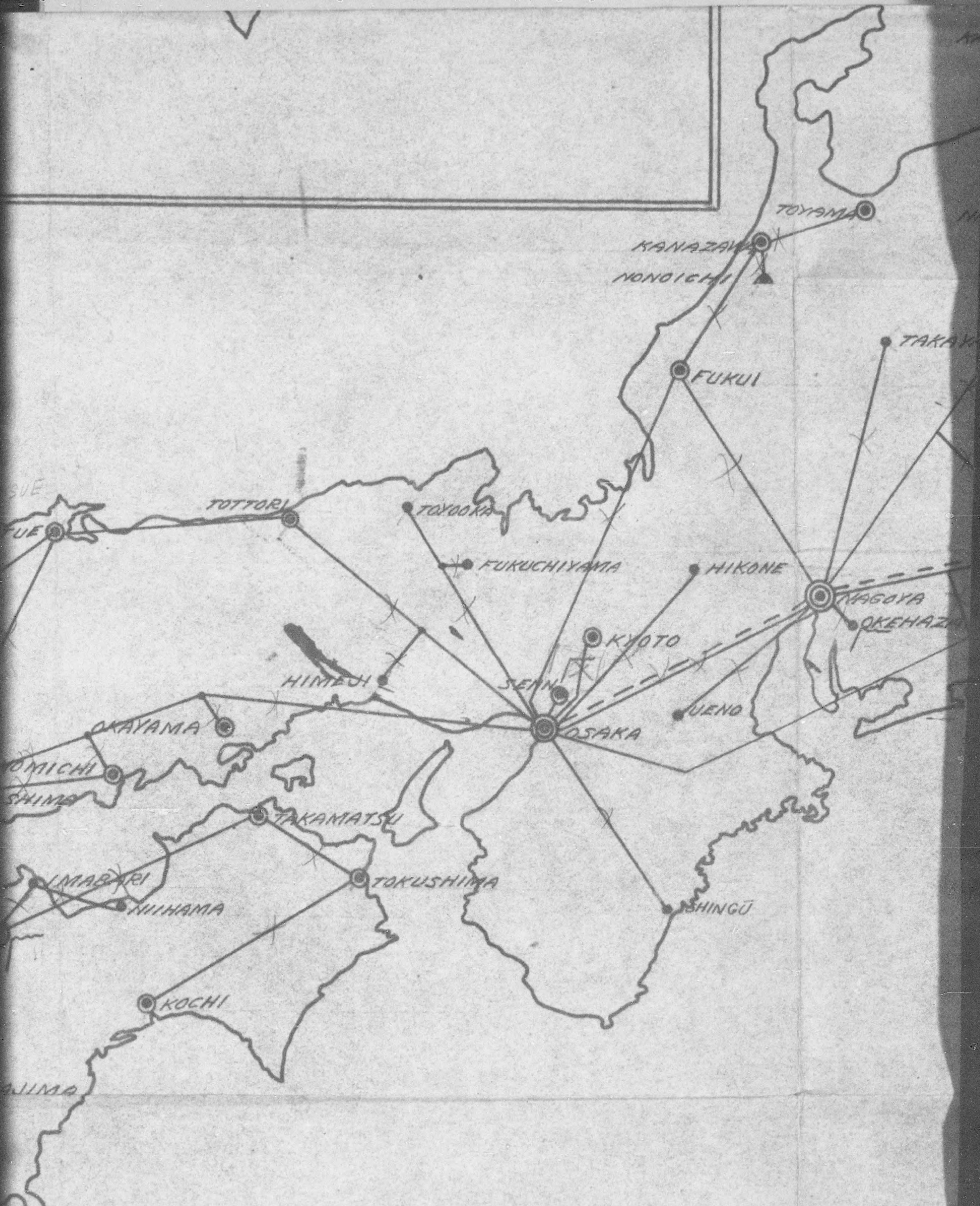
HITATI - HITACHI

HATOGAWA - HATOGAYA

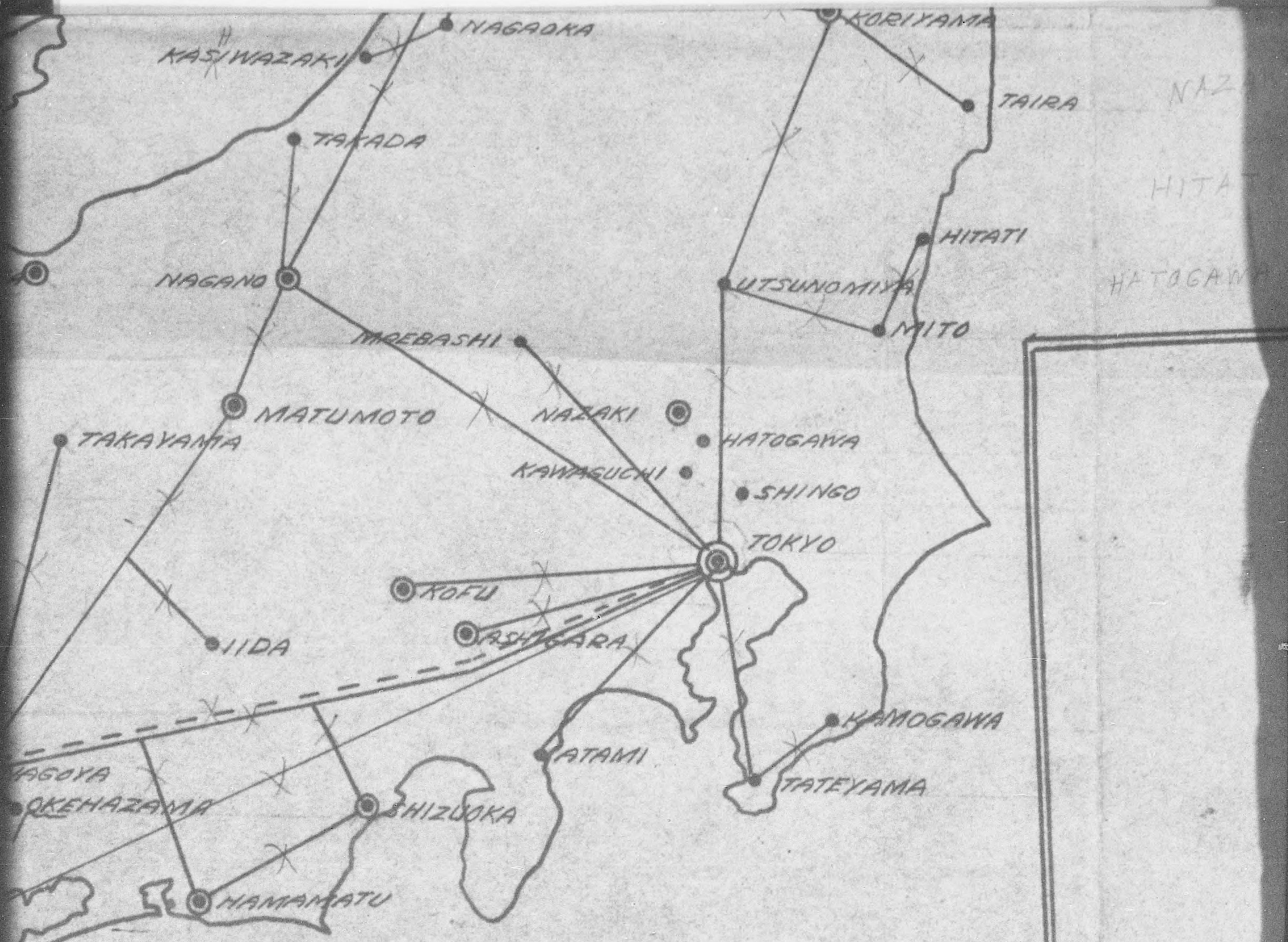


AOFU - BOFU - HOFU





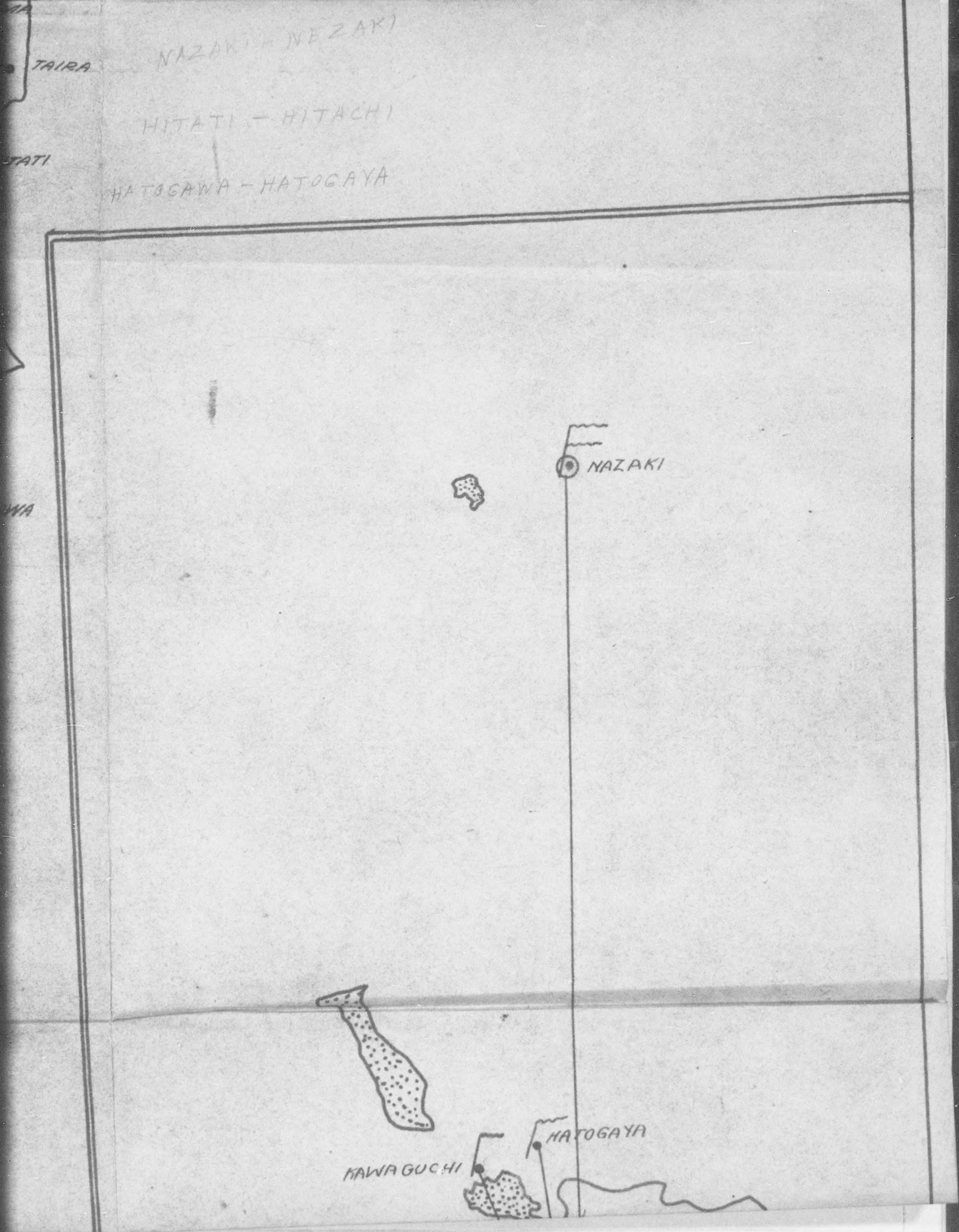
Legend:

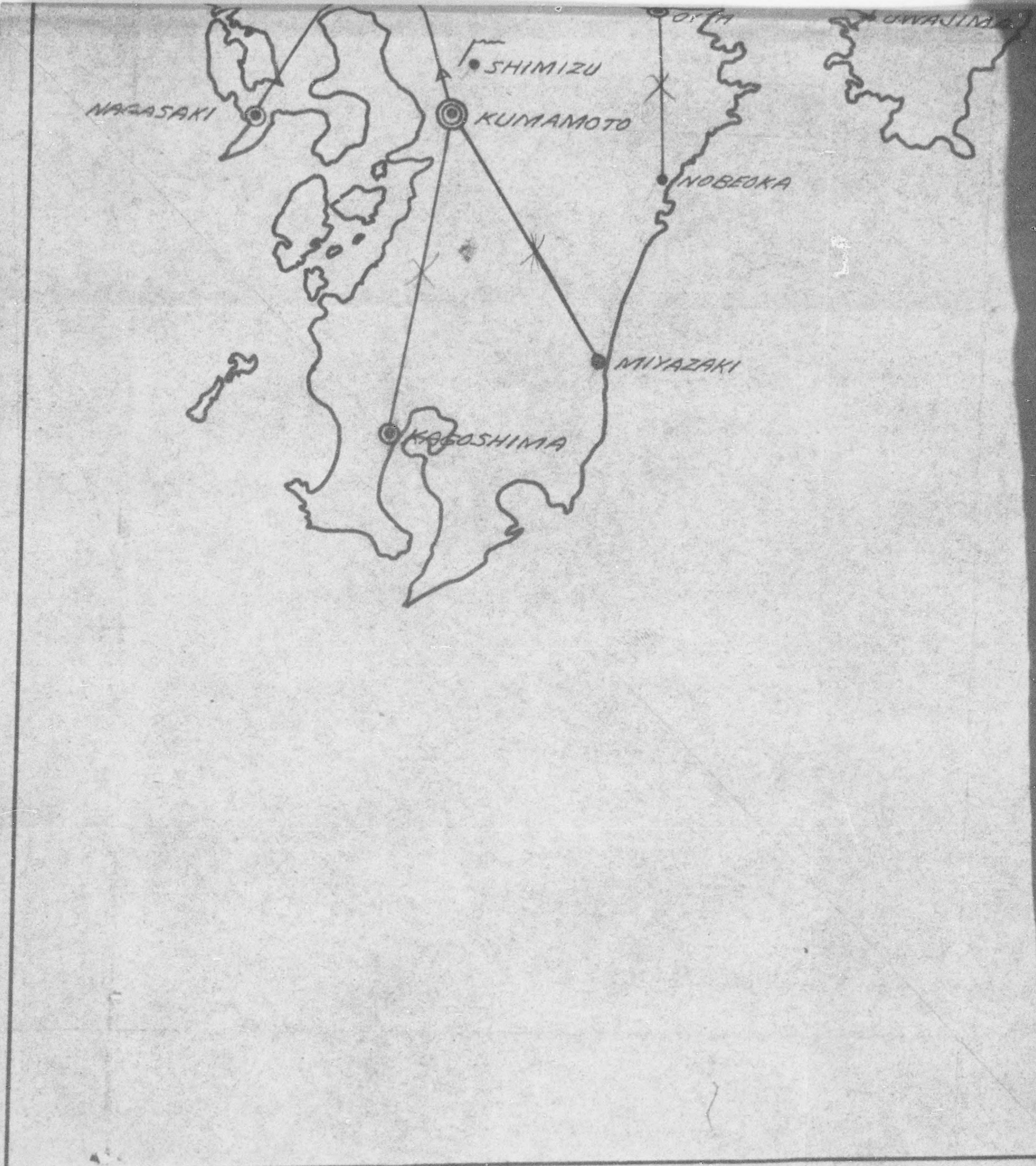


NAZ
HITA
HATOGAWA

OKEHAZAMA
OKEHAZAMA

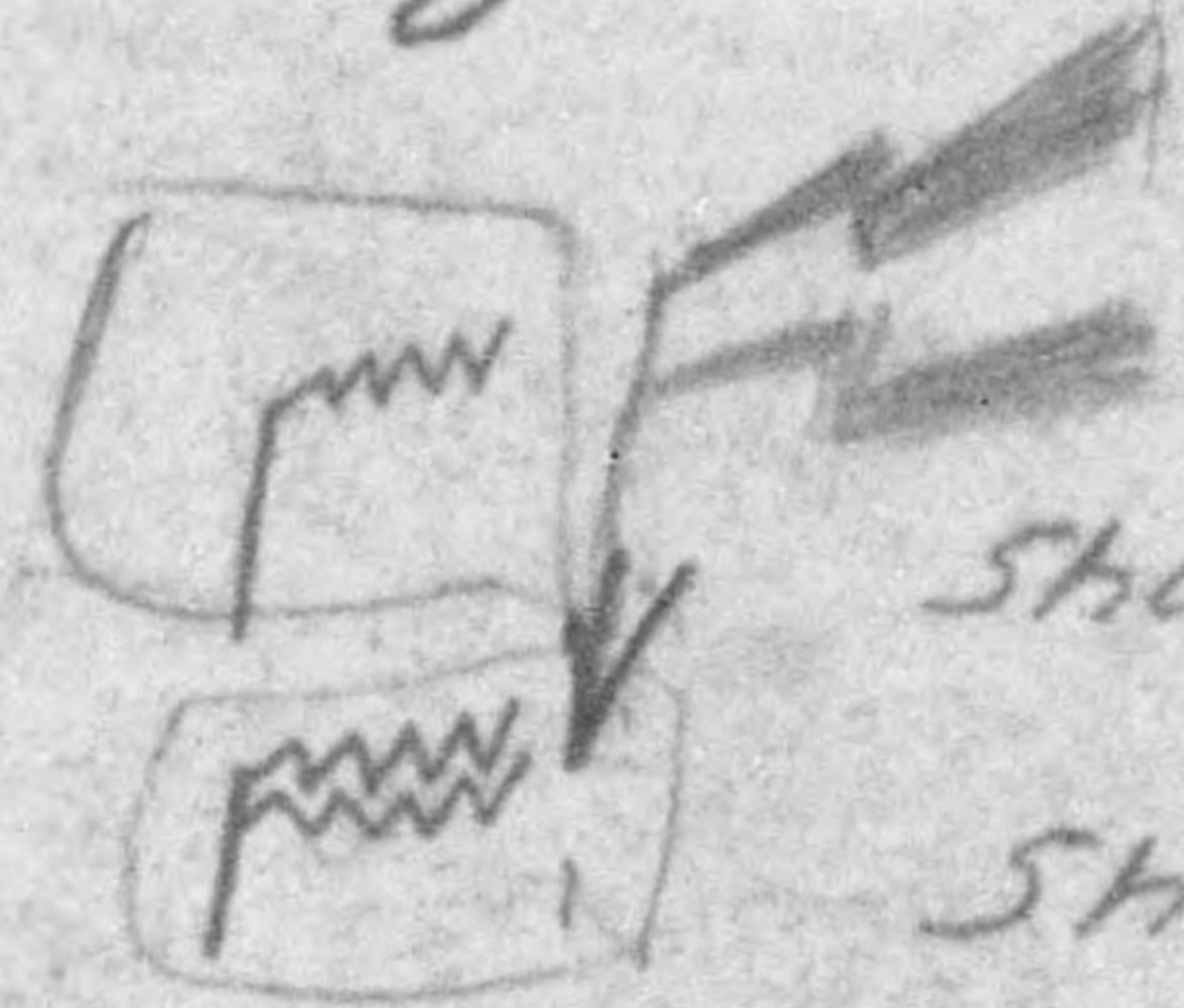
ISHIGARA
ASHIGARA







Legend:



- Short Wave Transmitter For Relaying No. 1*
- Short Wave Transmitter For Relaying No. 2*
- Relay Lines For No. 2 Programs Only*
- ~~*Other Lines Are All For No. 2 Programs*~~
- Central Station*
- Local Station*
- Relay Station*
- Transmitting Station Belongs To It*

**WIRE & RADIO INTERCO
OF THE
BROADCASTING CORPOR
OF JAPAN**

For Relaying No.1 Programs
For Relaying No.2 Programs
Programs Only
~~*For No.2 Programs*~~

n Belongs To Its Master

INTERCONNECTIONS
THE
CORPORATION
PAN

