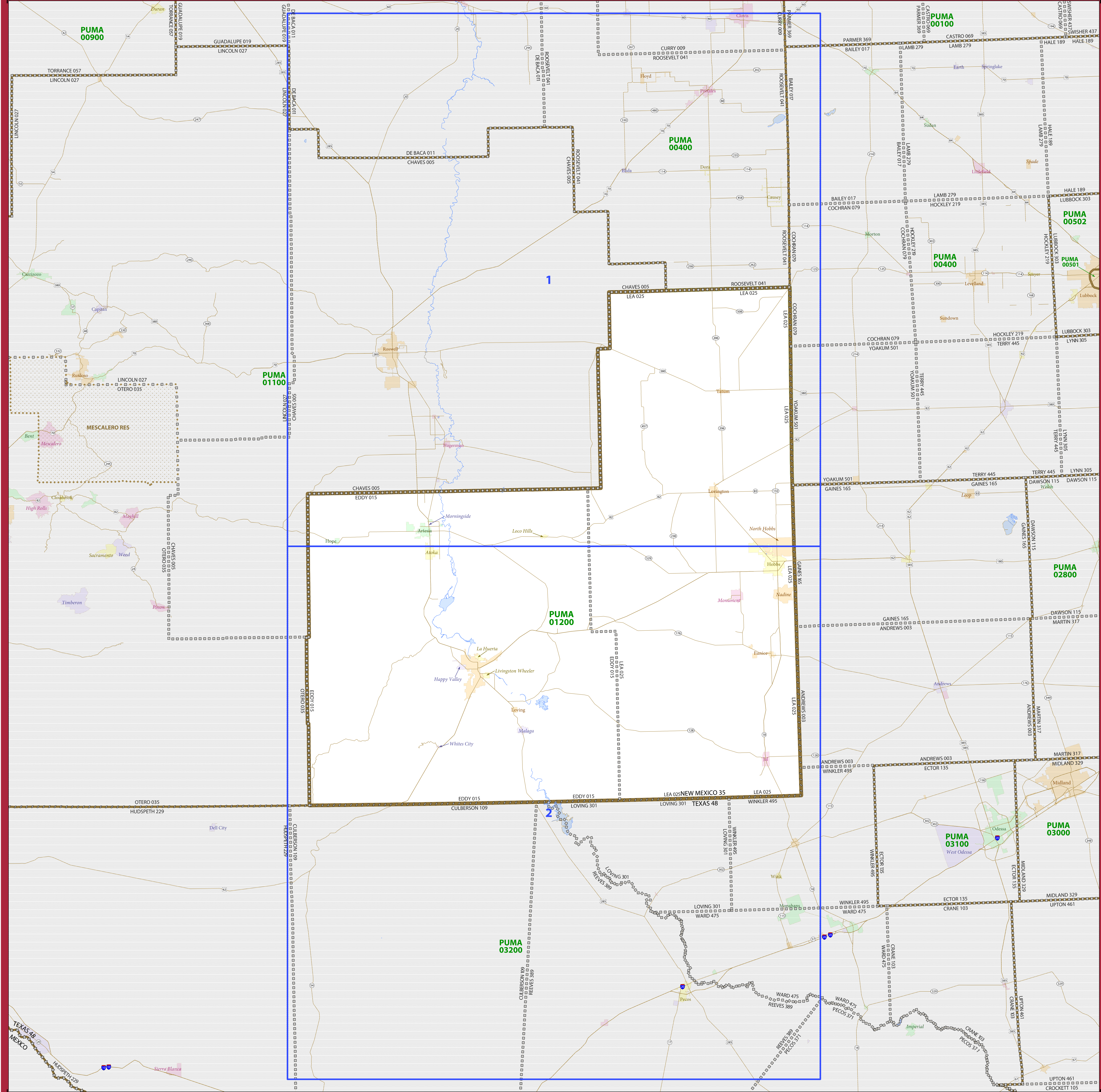


# 2010 CENSUS - PUMA REFERENCE MAP: Far Southeast New Mexico



### LEGEND

SYMBOL DESCRIPTION	SYMBOL	LABEL STYLE
International	☆☆☆☆☆	CANADA
Federal American Indian Reservation	.....	L'ANSE RES
Off-Reservation Trust Land	.....	T1880
Alaska Native Regional Corporation	.....	NANA ANRC
Public Use Microdata Area (PUMA)	.....	<b>PUMA 00300</b>
Census Tract	.....	183.01
State (or statistically equivalent entity)	.....	NEW YORK 36
County (or statistically equivalent entity)	.....	ERIE 029
Minor Civil Division (MCD)	.....	Bristol town
Consolidated City	.....	MILFORD
Incorporated Place <sup>2</sup>	.....	Davis
Census Designated Place (CDP) <sup>2</sup>	.....	Incline Village

DESCRIPTION	SYMBOL	DESCRIPTION	SYMBOL
Interstate	.....	Water Body	.....
U.S. Highway	.....	Outside Subject Area	.....
State Highway	.....		
Nonvisible Boundary or Feature Not Elsewhere Classified	.....		

Where international, state, and/or county boundaries coincide, the map shows the boundary symbol for only the highest-ranking of these boundaries.

Geographic areas outside the subject PUMA are labeled only as space allows.

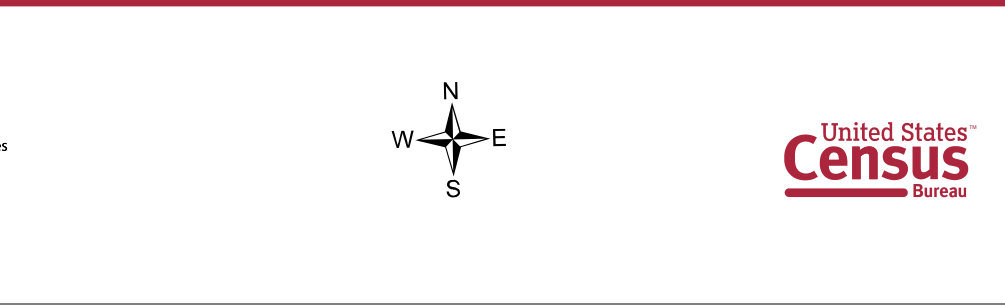
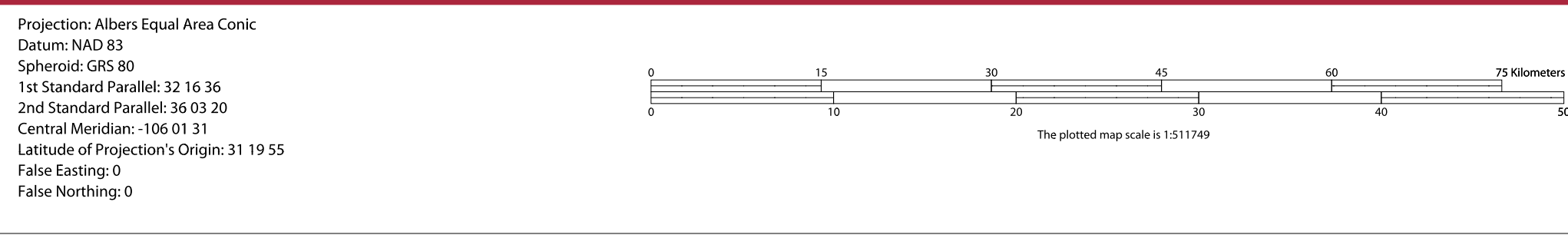
1 MCD boundaries are shown in the following states in which some or all MCDs function as general-purpose governmental units: Connecticut, Illinois, Indiana, Kansas, Maine, Massachusetts, Michigan, Minnesota, Missouri, Nebraska, New Hampshire, New Jersey, New York, North Dakota, Ohio, Pennsylvania, Rhode Island, South Dakota, Vermont, and Wisconsin. Only governmental MCDs in the subject PUMA are labeled.

2 Place label color corresponds to the place fill color.  
Label colors: Davis Davis Davis Davis Davis

**COUNTIES IN SUBJECT PUMA**  
 35013 Eddy  
 35025 Lea

Public Use Microdata Areas (PUMAs) are delineated based on the results of the 2010 Decennial Census; all other legal boundaries and names are as of January 1, 2010. The boundaries shown on this map are for Census Bureau statistical data collection and tabulation purposes only; their depiction and designation for statistical purposes does not constitute a determination of jurisdictional authority or rights of ownership or entitlement.

Geographic Vintage: 2010 Census (reference date: January 1, 2010)  
 Data Source: U.S. Census Bureau's MA/TIGER database (ACS13)  
 Map Created by: Geography Division: December 13, 2013



**INDEX SHEET**  
 Total Sheets: 3  
 Index Sheets: 1  
 Parent Sheets: 2  
 Inset Sheets: 0

**PUMA NAME:** Far Southeast New Mexico  
**PUMA CODE:** 01200  
**STATE:** New Mexico (35)