

Historic, archived document

Do not assume content reflects current scientific knowledge, policies, or practices.

U. S. Department of Agriculture

FOREST SERVICE

GIFFORD PINCHOT, FORESTER

1
F765Fo
Wasatch
Reserve

Flat
Folio

FOREST ATLAS

OF THE

NATIONAL FORESTS OF THE UNITED STATES

WASATCH

FOLIO

USDA
LIB

COMPILED AND PRINTED BY THE U. S. GEOLOGICAL SURVEY
GEORGE OTIS SMITH, DIRECTOR

FOREST ATLAS

GENERAL CLASSIFICATION

| Commercial Timber | |
|-------------------|----------------------------------------------------------------|
| | Less than 2,000 B.F. per acre |
| | 2,000 to 5,000 B.F. per acre |
| | 5,000 to 10,000 B.F. per acre |
| | 10,000 to 25,000 B.F. per acre |
| | 25,000 to 50,000 B.F. per acre |
| | Woodland, cordwood, poles, etc. |
| | Chaparral or brush |
| | Sagebrush |
| | Grassland, parks, etc. |
| | Barren, above timberline, etc. |
| | Desert |
| | Burn, not restocking |
| | Burn, scattering trees |
| | Burn, forest cover established |
| | Windfall |
| | Bug-killed or diseased |
| | Old cutting, less than 1/3 of the merchantable timber removed |
| | Old cutting, 1/3 to 2/3 of the merchantable timber removed |
| | Old cutting, 2/3 to all of the merchantable timber removed |
| | Timber sales, less than 1/3 of the merchantable timber removed |
| | Timber sales, 1/3 to 2/3 of the merchantable timber removed |
| | Timber sales, 2/3 to all of the merchantable timber removed |
| | Cultivated |
| | Irrigated |

TITLE

| | |
|--|---------------------------------|
| | Alienations |
| | Permanent alienations |
| | State lands, approved |
| | State lands, not approved |
| | Indian allotments |
| | Lien selections |
| | Railway lands, patented |
| | Railway lands, not patented |
| | Homesteads, patented |
| | Homesteads, not patented |
| | Cash entry |
| | Timber and stone |
| | Coal entry |
| | Townsite entry |
| | Mineral lode claims, patented |
| | Mineral placer claims, patented |
| | Mineral mill site, patented |
| | Mineral classification |

GRAZING MAP LEGEND

| | |
|--|----------------------------------|
| | Supervisor's headquarters |
| | Supervisor's division |
| | Ranger's division |
| | Grazing districts |
| | Open for all stock |
| | Open for cattle and horses only. |
| | Open for sheep and goats only |
| | Closed for all stock |
| | Lambing grounds |
| | Driveways for stock |
| | Corral |

CONVENTIONAL SIGNS

| | |
|--|---------------------------------------------|
| | Block line |
| | Compartment line, sales |
| | Boundary line for all other classifications |
| | Grant line |
| | Telegraph line |
| | Telephone line |
| | Power line |
| | Pipe line |
| | Aqueduct |
| | Railroad |
| | Tramway |
| | Wire rope conveyor |
| | Wagon road |
| | Secondary or private road |
| | Pack trail |
| | Foot trail |
| | Fire line |
| | Fence |
| | Ditch |
| | Flume |
| | Slide |
| | Log driving route |
| | Rollway |
| | Skidway |
| | Bridge |
| | Ferry |
| | Ford |
| | Sowing |
| | Nursery |
| | Corral |
| | Supervisor's headquarters |
| | Ranger's headquarters |
| | House |
| | Railroad station |
| | Stage station |
| | Power station |
| | Hotel |
| | Store |
| | School |
| | Church |
| | Cemetery |
| | Telegraph office |
| | Telephone office |
| | Cabin |
| | Dairy |
| | Logging camp |
| | Sawmill, portable |
| | Sawmill, stationary |
| | Grist mill |
| | Grist and sawmill |
| | Apiary |
| | Mine location, unpatented |

U.S. Improvements made by the United States are marked U. S.

Proposed improvements are shown by the appropriate sign and are designated by "Proposed" on the margin of the maps

Abandoned improvements are shown by zeros O O O O and designated on the margin of the maps

ALPHA-NUMERIC SYMBOLS FOR WESTERN COMMERCIAL TREE SPECIES

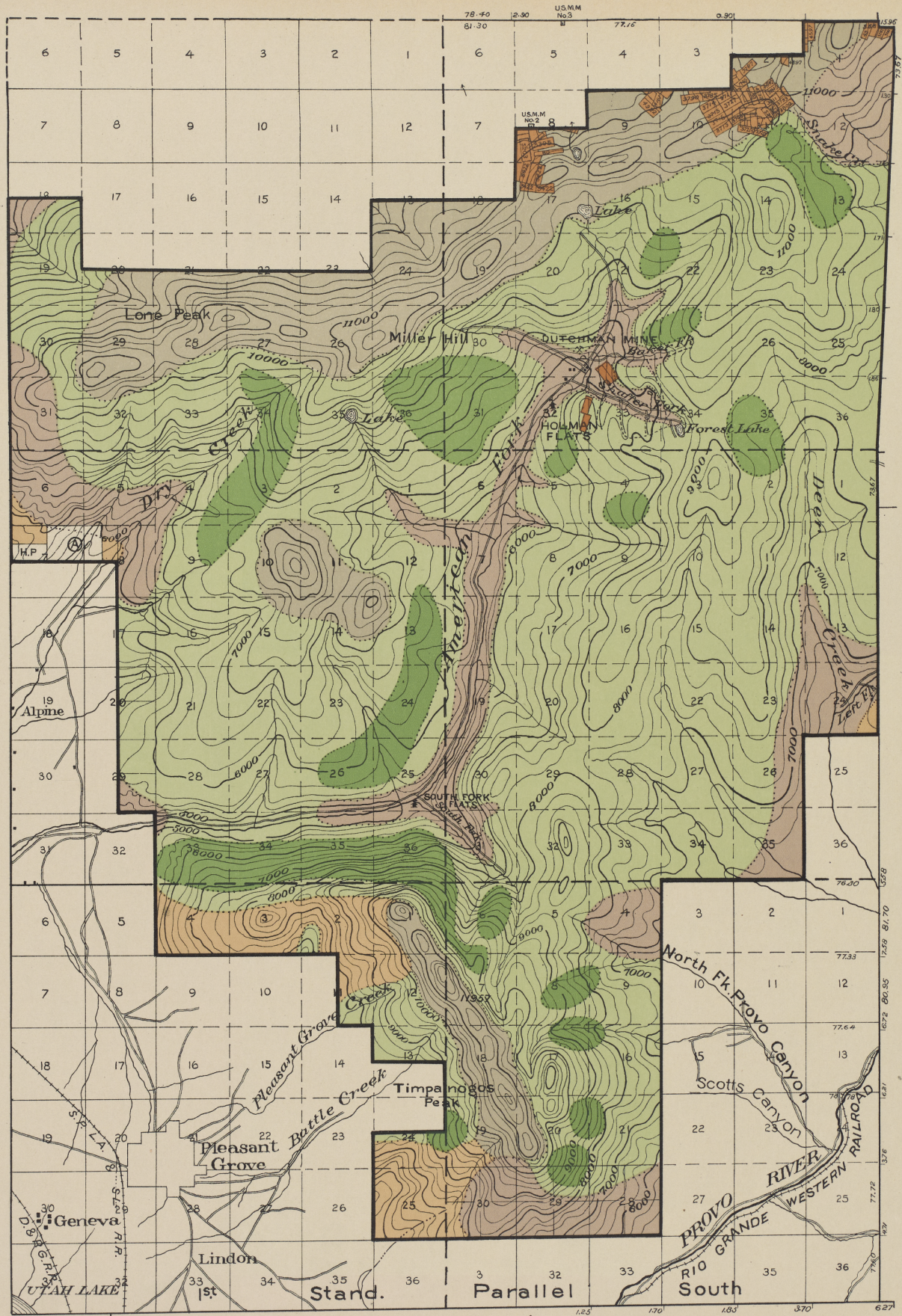
These will be used on maps, where limited space makes necessary, in the following manner:

D129 = *Pseudotsuga taxifolia*, average stand 29,000 B.M. per acre

Q612 = *Quercus agrifolia*, average stand 12 cords per acre

T67 = *Thuja plicata*, average stand 7 tele-poles per acre

| | | |
|-----------|-----------------------------------|------------------------|
| PO | <i>Pinus murrayana</i> | Lodgepole Pine |
| 1 | <i>flexilis</i> | Limber Pine |
| 2 | <i>monticola</i> | Western White Pine |
| 3 | <i>lambertiana</i> | Sugar Pine |
| 4 | <i>ponderosa</i> | Yellow Pine |
| 5 | <i>culteri</i> | Coulter Pine |
| 6 | <i>sabiniana</i> | Gray Pine |
| 7 | <i>jeffreyi</i> | Jeffrey Pine |
| 8 | <i>radiata</i> | Monterey Pine |
| 9 | <i>attenuata</i> | Knobcone Pine |
| B2 | <i>strobiformis</i> | Mexican White Pine |
| 5 | <i>albicaulis</i> | White-bark Pine |
| 6 | <i>torreyana</i> | Torrey Pine |
| 7 | <i>edulis</i> | Pinon |
| 9 | <i>monophylla</i> | Single-leaf Pinon |
| A1 | <i>Abies magnifica</i> | Magnificent Fir |
| 2 | <i>concolor</i> | White Fir |
| 3 | <i>shastensis</i> | Shasta Fir |
| 4 | <i>nobilis</i> | Noble Fir |
| 5 | <i>lasiocarpa</i> | Alpine Fir |
| 6 | <i>grandis</i> | Lowland Fir |
| 7 | <i>arizonica</i> | Arizona Cork Fir |
| 8 | <i>amabilis</i> | Lovely Fir |
| 9 | <i>venusta</i> | Bristle-cone Fir |
| S2 | <i>Picea engelmanni</i> | Engelmann Spruce |
| 3 | <i>parryana</i> | Blue Spruce |
| 5 | <i>brevieriana</i> | Weeping Spruce |
| 6 | <i>sitchensis</i> | Sitka Spruce |
| D1 | <i>Pseudotsuga taxifolia</i> | Douglas Fir (Red) |
| 5 | <i>macrocarpa</i> | Bigcone Spruce |
| H5 | <i>Tsuga mertensiana</i> | Black Hemlock |
| 6 | <i>heterophylla</i> | Western Hemlock |
| R1 | <i>Sequoia sempervirens</i> | Redwood |
| 5 | <i>washingtoniana</i> | Bigtree |
| C5 | <i>Chamaecyparis nootkatensis</i> | Yellow Cedar |
| 6 | <i>lawsoniana</i> | Port Orford Cedar |
| T6 | <i>Thuja plicata</i> | Red Cedar |
| L5 | <i>Larix lyallii</i> | Alpine Larch |
| 7 | <i>occidentalis</i> | Western Larch |
| O5 | <i>Libocedrus decurrens</i> | Incense Cedar |
| K5 | <i>Cupressus macnabiana</i> | Maenab Cypress |
| 6 | <i>macrocarpa</i> | Monterey Cypress |
| 7 | <i>arizonica</i> | Arizona Cypress |
| 8 | <i>goreniiana</i> | Gowen Cypress |
| J1 | <i>Juniperus utahensis</i> | Utah Juniper |
| 2 | <i>pachyphloea</i> | Alligator Juniper |
| 4 | <i>occidentalis</i> | Western Juniper |
| 5 | <i>sabinoides</i> | Mountain Juniper |
| 7 | <i>californica</i> | California Juniper |
| 9 | <i>monosperma</i> | One seed Juniper |
| Q0 | <i>Quercus chrysolepis</i> | Canyon Live Oak |
| 1 | <i>californica</i> | California Black Oak |
| 2 | <i>lobata</i> | California White Oak |
| 3 | <i>douglasii</i> | Blue Oak |
| 4 | <i>garryana</i> | Pacific Post Oak |
| 5 | <i>wislizeni</i> | Highland Oak |
| 6 | <i>agrifolia</i> | California Live Oak |
| 7 | <i>gambelii</i> | Gambel Oak |
| 8 | <i>densiflora</i> | California Tanbark Oak |
| 9 | <i>engelmanni</i> | Engelmann Oak |
| M2 | <i>Acer macrophyllum</i> | Oregon Maple |
| 5 | <i>glabrum</i> | Dwarf Maple |
| 9 | <i>negundo californicum</i> | California Boxelder |
| W0 | <i>Populus trichocarpa</i> | Black Cottonwood |
| 2 | <i>fremontii</i> | Fremont Cottonwood |
| 5 | <i>tremuloides</i> | Aspen |
| 7 | <i>angustifolia</i> | Narrowleaf Cottonwood. |
| F1 | <i>Fraxinus pennsylvanica</i> | Red Ash |
| 6 | <i>oregona</i> | Oregon Ash |
| 8 | <i>lanceolata</i> | Green Ash |
| U1 | <i>Prunus demissa</i> | Western Choke Cherry |
| Y7 | <i>Platanus wrightii</i> | Arizona Sycamore |
| 8 | <i>racemosa</i> | California Sycamore |
| X0 | <i>Salix lasiandra</i> | Western Black Willow |
| 2 | <i>sessilifolia</i> | Silverleaf Willow |
| 9 | <i>amygdaloides</i> | Almondleaf Willow |



T. 3 S.

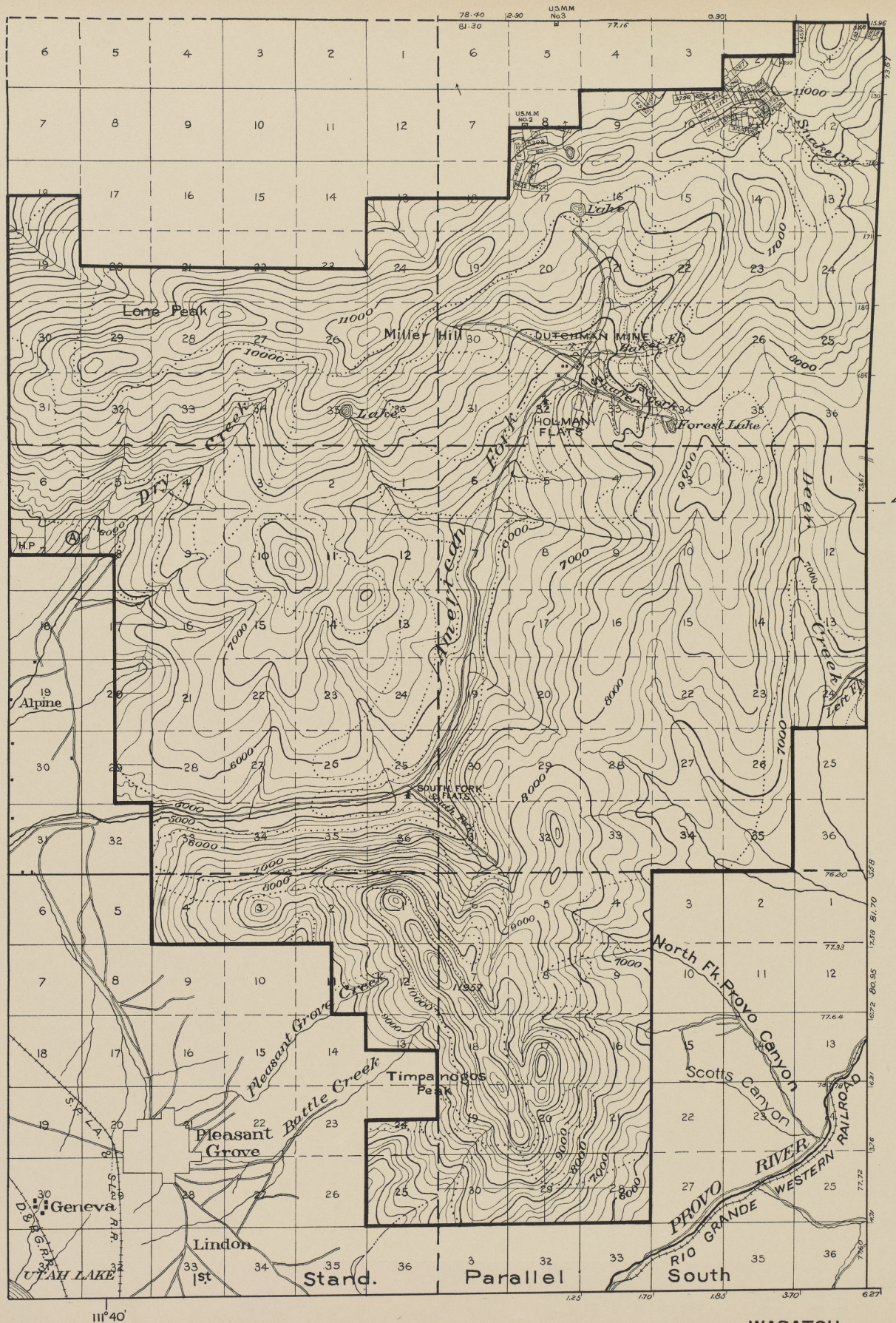
T. 4 S.

T. 5 S.

R. 2 E.

R. 3 E.

SEPT. 1907
WASATCH
SALT LAKE MERIDIAN



T. 3 S.

40°30'

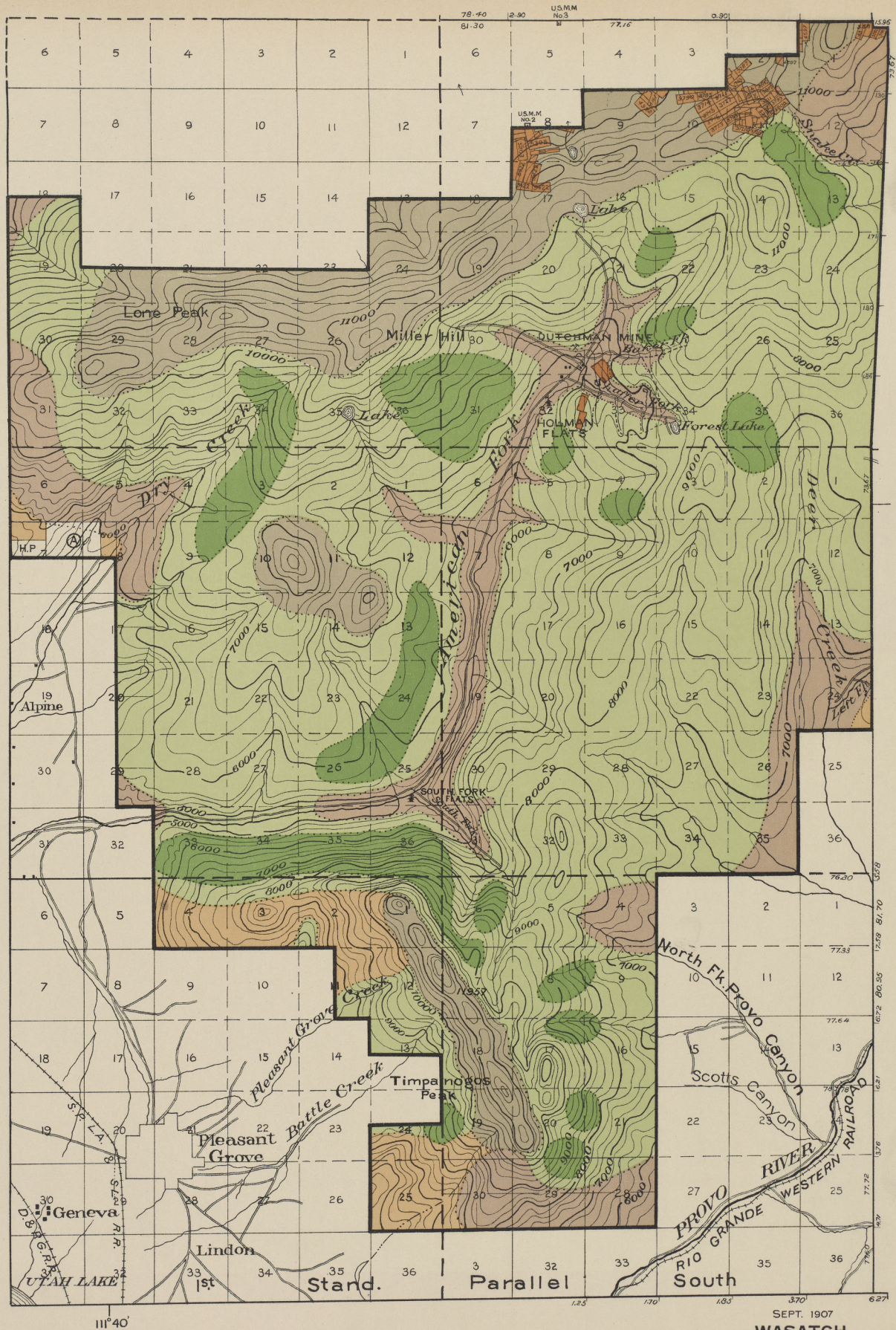
T. 4 S.

T. 5 S.

R. 2 E.

R. 3 E.

WASATCH
SALT LAKE MERIDIAN



T. 3 S.

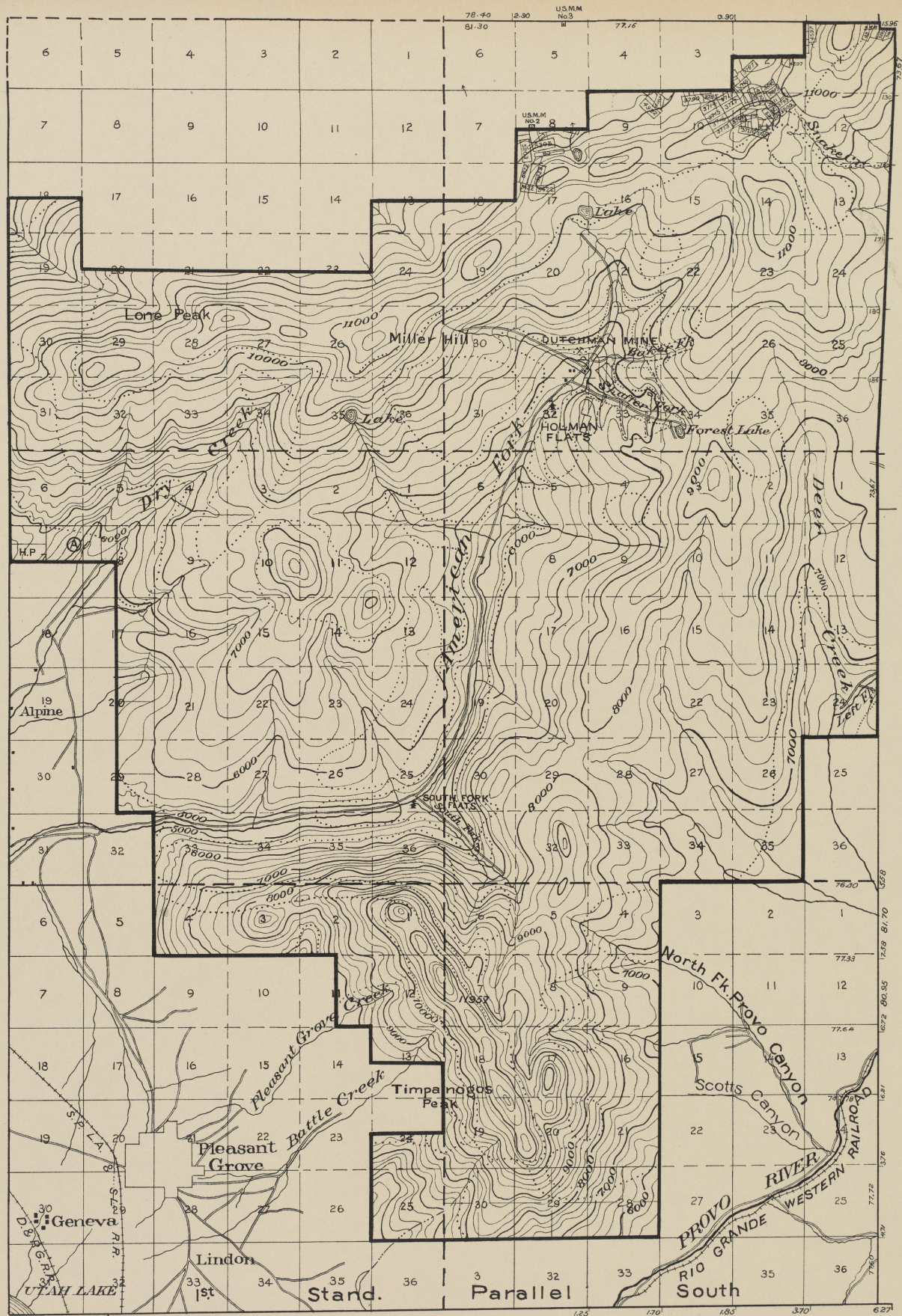
T. 4 S.

T. 5 S.

R. 2 E.

R. 3 E.

SEPT. 1907
WASATCH
 SALT LAKE MERIDIAN



T. 3 S.

40°30'

T. 4 S.

T. 5 S.

R. 2 E.

R. 3 E.

WASATCH
SALT LAKE MERIDIAN

