

TT 556
.563
Copy 1

J. B. SMALL'S

ILLUSTRATED

CATALOGUE

OF

NEW YORK FASHIONS

FOR

Ladies, Misses, Boys and Children's Garments,

ALL AGES AND SIZES.

Summer Fashions, 1872



PRINCIPAL OFFICE AND SALESROOM,

643 BROADWAY, COR. BLEECKER STREET,

SAME BLOCK WITH GRAND CENTRAL HOTEL.

New York.

J. B. SMALL'S

Cut Paper Patterns of Perfect Fitting Garments.

The qualities which recommend these Patterns over all others are as follows:

First.—Our Patterns are of different sizes, enabling a large as well as small person to obtain a Pattern which will require little or no variation.

Second.—Each garment is fitted in cloth, and made to fit perfect, before the different sizes are graded.

Third.—Each Pattern has a label with picture of garment, and full instructions how to cut, make, trim, amount of cloth and trimming required, and size.

Fourth.—Our patterns are not cut by a *chart* or *dress* model; and no Pattern can be correct unless the garment is fitted in cloth, and submitted to an actual test.

Fifth.—Our Ladies' Patterns of Outside Garments are in nine sizes, 30 to 46 inches bust measure; no odd sizes; plain waist, in nineteen sizes, 28 to 46 inches bust measure. Misses' Garments, nine to fifteen years, seven sizes. Children's Garments, one to eight years. Boys' Coats, Vests and Pants, in various styles, from three to fifteen years.

Sixth.—All the difficult parts in each piece of the Pattern are notched and punched, so the garment can be put together by the most inexperienced.

Directions for Taking the Measure.

For a Lady's Basque, Dress, Cloak, Waist and Sack.—Pass a tape measure around the body, under the arm, across the largest part of the shoulder-blade, and two inches above the fullest part of the chest, drawing it medium tight.

See page 1, No. 512, Lady's Plain Waist.

For a Skirt.—Give the size around the waist.

For Little Girls.—Pass the tape measure straight around the body, under the arms. In ordering, give the age.

For Boy's Coat, Jacket, Vest or Waist.—Pass the measure around the body, under the Jacket, close under the arms, drawing it medium tight.

For Overcoat.—Measure the same as for Jacket; only measure over whatever garment the Coat is to be worn over.

For Pants.—Pass the tape measure around the body, over the Pants at the waist, drawing it medium tight.

For Gentleman's Shirt.—For the size of the neck, measure the exact size where the collar encircles it, allowing one inch. If the exact size is 14 inches, use a Pattern marked 15 inches. For the breast, measure the same as for a Coat. For the length of sleeve, measure from the bone in the back of the neck, over the highest point of the shoulder, down the arm to the lowest point the wristband is to extend. Be careful and not get the sleeve too short.

Any of the Patterns specified in the within Catalogue can be procured at the Sales-room, or sent by mail, post-paid, to any part of the United States or Canada, on receipt of price, size and number of Pattern.

Please write your Name, Town, County and State very plain.

J. B. SMALL,

Cor. Bleecker Street.

643 Broadway, N. Y.

LADIES' PATTERNS.



Front.
512

Lady's Plain Waist.

Back.
512

Bust Measure, 28 to 46 inches, 19 sizes, 15 cents each.
For description of how to take measure, see opposite page.



Front. 822 Back.

Lady's Polonaise, with Cape.

Bust Measure, 30 to 46 inches. 9 sizes, 25 cents each.
Quantity of material, 27 inches wide, 8 1/4 yards.

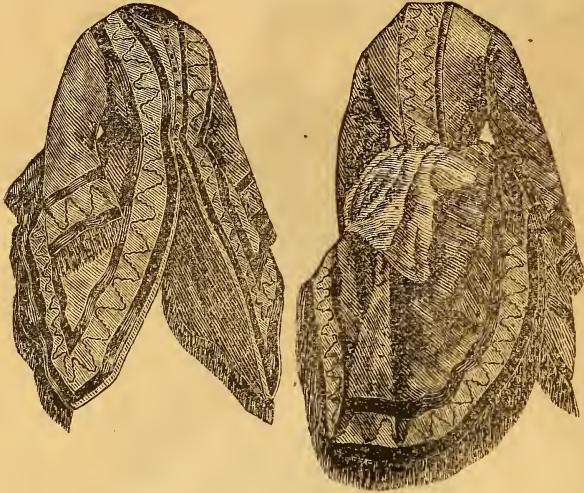


Front. 453 Back.

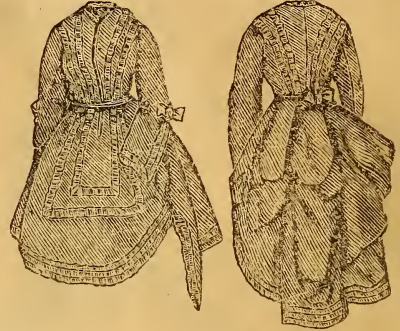
Lady's Polonaise, with Basque Back.

Bust Measure, 30 to 46 inches. 9 sizes, 25 cts. each.
Quantity of material, 27 inches wide, 7 yards.

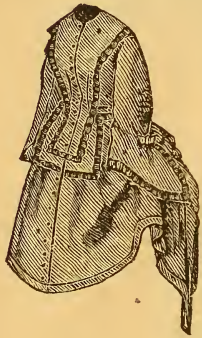
J. B. Small's Patterns are of different sizes, enabling a large as well as small person to obtain a pattern which will require little or no variation. Send measure and price for any garment illustrated, and you will receive a pattern to correspond, in the latest style, together with a picture of the garment and full directions for making and trimming. We decidedly recommend the Willcox & Gibbs Silent Family Sewing Machine for the manufacture of these goods. It is the best Family Sewing Machine in the market, is easily learnt, never out of order, and makes the most secure and elastic seam known. Thousands of persons every year exchange their troublesome, heavy-running, double thread machines for it, and find their advantage in additional peace and comfort.



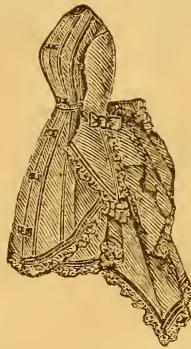
Front 824 Back.
 Lady's Polonaise, with Triple Watteau Fold.
 Bust measure, 30 to 46 inches.
 9 sizes, 25 cents each.
 Quantity of material, 27 inches wide, 8 yards.



Front. 501 Back.
 Lady's Polonaise, with Apron Front.
 Bust measure, 30 to 46 inches.
 9 sizes, 25 cents each.
 Quantity of material, 27 inches wide, 8 yards.



Front. 502 Back.
 Lady's Marguerite Dolly Varden Polonaise.
 Bust measure, 30 to 46 inches.
 9 sizes, 25 cents each.
 Quantity of material, 27 inches wide, 9 yards.



Front. 500 Back.
 Lady's Pleated Polonaise.
 Bust measure, 30 to 46 inches.
 9 sizes, 25 cents each.
 Quantity of material, 27 inches, 9 yards.



408—Back.
 Lady's Mantle.
 Bust meas. 30 to 46 in.
 9 sizes, 25c. each.
 Quantity of material,
 27 ins. wide, 5 yds.



Front. 813 Back.
 Lady's Continental Polonaise, with Franklin Vest.
 Bust measure, 30 to 46 inches.
 9 sizes, 25 cents each.
 Quantity of material, 27 inches wide, 8 1/2 yards.



Front. 758 Back.
 Lady's Over Garment.
 Bust measure, 30 to 46 inches
 9 sizes, 25 cents each.
 Quantity of material, 27 ins. wide, 7 1/2 yds.

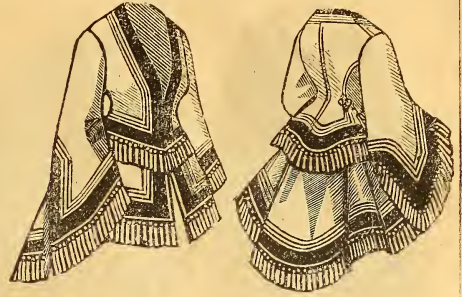


549—Back.
 Lady's Polonaise.
 Bust meas. 30 to 46 in.
 9 sizes, 25c. each.
 Quantity of material,
 27 ins. wide, 7 1/2 yds.

In making the above garments, use, if possible, the Willcox & Gibbs Silent Family Sewing Machine, which is decidedly the best adapted for this and every kind of family sewing. Everywhere families are exchanging their double threads for it, and reap the benefit in quietness, peace, health and practical utility.



Front. 901 Back.
 Lady's Dolly Varden Polonaise.
 Bust Measure, 30 to 46 inches.
 9 sizes, 25 cents each.
 Quantity of material, 27 inches wide, 9 yards.

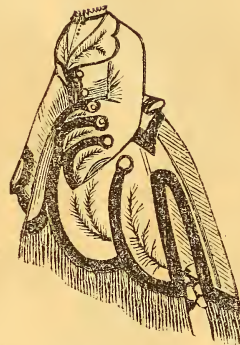


Front. 757 Back.

Lady's Over Dress, with Basque Back.
 Bust Measure, 30 to 46 inches.
 9 sizes, 25 cents each.
 Quantity of material, 27 inches wide, 8½ yards.



Front. 812 Back.
 Lady's Watteau Mantle.
 Bust Measure, 30 to 46 inches.
 9 sizes, 25 cents each.
 Quantity of material, 27 inches wide, 7 yards.



820—Side.
 Lady's Postillon Polonaise.
 Bust Measure, 30 to 46 inches.
 9 sizes, 25 cents each.
 Quantity of mat'l, 27 ins., 7½ yds.



814—Side.
 Lady's Polonaise, with Basque Back.
 Bust Meas. 30 to 46 ins.
 9 sizes, 25c. each. Quantity of mat'l, 27 ins., 7 yds.



509—Front.
 Lady's Polonaise, with Basque Back.
 Bust Measure, 30 to 46 ins.
 9 sizes, 25c. each. Quantity of mat'l, 27 ins., 7½ yds.



504—Front.
 Lady's Vest Casaque, with Pleats in Back.
 Bust Meas. 30 to 46 ins.
 9 sizes, 25c. each. Quantity of material, 27 ins. wide, 3½ yds.



515—Side.
 Lady's Over Garment.
 Bust Measure, 30 to 46 ins.
 9 sizes, 25c. each. Quantity of material, 27 ins. wide, 8 yds.



728—Side.
 Lady's House Polonaise.
 Bust Meas. 30 to 46 ins.
 9 sizes, 25c. each. Quantity of mat'l, 27 ins., 8 yds.

For making these garments the Willcox & Gibbs Silent Machine is decidedly the best. It is proved by long trial that the twisted loop stitch is more elastic and stronger than the shuttle stitch. The tension is more easily regulated than that of any other machine; the needle is self-adjusting, and gives no trouble; and, in short, families who have long used lock-stitch and other machines, are exchanging them at the rate of many thousands per annum for the Willcox & Gibbs.



Front. 761 Back.

Lady's Over Skirt.
Waist Measure, 20 to 30 inches.
6 sizes, 20 cents each.
Quantity of material, 27 inches wide, 6½ yds.



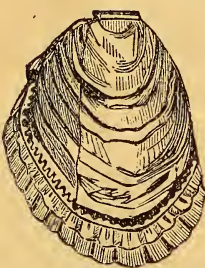
818—Side.

Lady's Over Skirt, with Watteau fold.
Waist Measure, 20 to 30 inches.
6 sizes, 2½ cents each.
Quantity of material, 27 ins., 4½ yds.



701—Side.

Lady's Demi-Train Skirt.
Waist Meas. 20 to 30 ins.
6 sizes, 25 cents each.
Qu'ty of mat'l, 27 in. 10 yds.



Front. 450 Back.

Lady's Drapery Over Skirt.
Waist Measure, 20 to 30 inches.
6 sizes, 20 cents each.
Quantity of material, 27 inches wide, 3 yards.



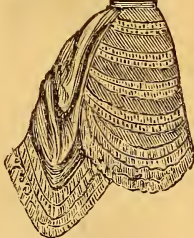
Front. 736 Back.

Lady's Over Skirt.
Waist Measure, 20 to 30 inches.
6 sizes, 20 cents each.
Quantity of material, 27 inches wide, 4½ yards.



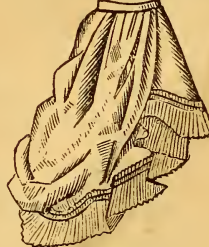
508—Side.

Lady's Over Skirt.
Waist Meas. 20 to 30 ins.
6 sizes, 20c. each. Quantity
of mat'l, 27 ins., 4½ yds.



745—Front.

Lady's Drapery Over Skirt.
Waist Measure, 20 to 30 inches.
6 sizes, 20c. each. Quantity
of mat'l, 27 ins. wide, 5 yds.



704—Back.

Lady's Drapery Over Skirt.
Waist Measure, 20 to 30 inches.
6 sizes, 20c. each. Quantity
of mat'l, 27 ins. wide, 4½ yds.



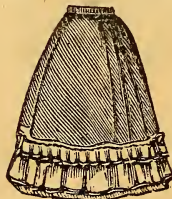
754—Back.

Lady's Over Skirt.
Waist Meas. 20 to 30 ins.
6 sizes, 20c. each. Quantity
of mat'l, 27 ins., 4 yds.



437—Front.

Six Gored Walking Skirt.
Waist Meas. 29 to 30 ins.
6 sizes, 25c. each. Quantity
of mat'l, 27 ins., 8 yds.



532—Front.

Four Gored Walking Skirt.
Waist Measure, 29 to 30 inches.
6 sizes, 25c. each. Quantity
of mat'l, 27 ins. wide, 6½ yds.



350—Side.

Lady's Over Skirt.
Waist Measure, 20 to 30 inches.
6 sizes, 20c. each. Quantity
of mat'l, 27 ins. wide, 4½ yds.

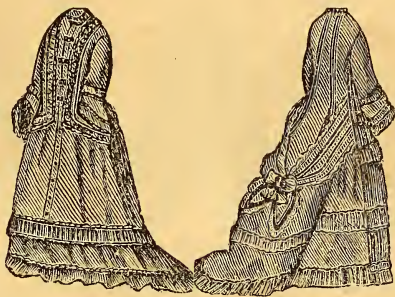


534—Side.

Lady's Over Skirt.
Waist Meas. 29 to 30 ins.
6 sizes, 20c. each. Quantity
of mat'l, 27 ins., 3½ yds.



507—Front.
Lady's Gored Wrapper.
Bust Measure, 30 to 46 inches.
9 sizes, 25 cents each.
Quantity of mat'l, 27 ins., 9 yds.



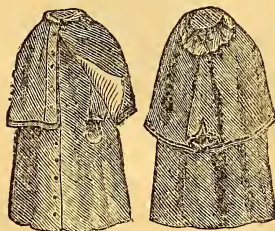
Front. 731 Back.
Lady's Wattleau Wrapper, with Sash.
Bust Measure, 30 to 46 inches.
9 sizes, 25 cents each.
Quantity of material, 27 ins. wide, 10 yds.



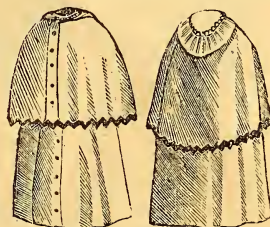
706—Side.
Lady's Gored Wrapper.
Bust Measure, 30 to 46 inches.
9 sizes, 25 cents each.
Qu'ty of mat'l, 27 ins., 10 yds.



Front. 300 Back.
Lady's Wattleau Wrapper.
Bust Measure, 30 to 46 inches.
9 sizes, 25 cents each.
Quantity of material, 27 ins. wide, 9 yds.



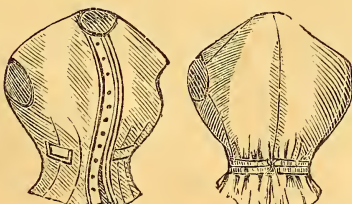
Front. 821 Back.
Lady's Waterproof Sack and Cape,
with Wattleau fold.
Bust Measure, 30 to 46 inches.
9 sizes, 25 cents each.
Quantity of mat'l, 54 ins. wide, 5 1/4 yds.



Front. 544 Back.
Lady's Waterproof Circular, with
Cape and Hood.
Bust Measure, 30 to 46 inches.
9 sizes, 25 cents each.
Quantity of mat'l, 54 ins., 5 yds.



Front. 444 Back.
Lady's Waterproof Cloak, with Cape
forming a sleeve.
Bust Measure, 30 to 46 inches.
9 sizes, 25c. each.
Quantity of mat'l, 54 ins. wide, 4 1/2 yds.



Front. 810 Back.
Lady's Vest.
Bust Measure, 30 to 46 inches.
9 sizes, 10c. each.
Quantity of material,
27 inches wide, 1 1/2 yards.



416—Side.
Lady's Postillion Basque.
Bust Meas. 30 to 46 ins.
9 sizes, 20c. each.
Quantity of material,
27 inches wide, 3 1/2 yards.



753—Back.
Lady's Loose Dressing Sack.
Bust Meas. 30 to 46 ins.
9 sizes, 20c. each. Quantity
of mat'l, 27 ins., 3 1/2 yds.



727—Back.
Lady's Loose Sack.
Bust Meas. 30 to 46 ins.
9 sizes, 20c. each. Quantity
of mat'l, 27 ins. wide, 3 yds.

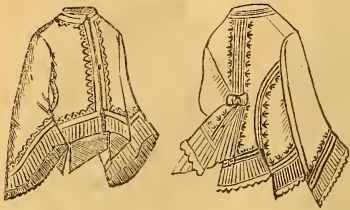


321—Front.
Lady's Short Plain Sack.
Bust Measure, 30 to 46 inches.
9 sizes, 20c. each. Quantity
of mat'l, 27 ins. wide, 3 yds.

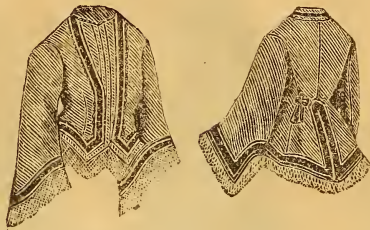


510—Front.
Lady's Plain Waist.
Bust Meas. 28 to 46 ins.
19 sizes, 15c. each. Qu'ty
of mat'l, 27 ins., 2 1/2 yds.

The Willcox & Gibbs Silent Family Sewing Machine is decidedly the best machine for making these garments. It is easier to operate by far than any double-thread or lock-stitch machine known.



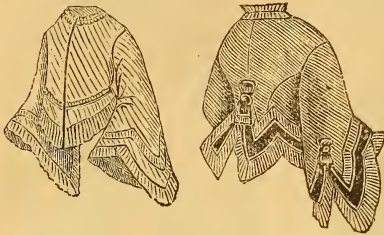
Front. 527 Back.
Lady's Half-Fitting Jacket.
Bust Measure, 30 to 46 inches.
9 sizes, 20 cents each.
Quantity of material, 27 ins. wide, 3 $\frac{1}{2}$ yds.



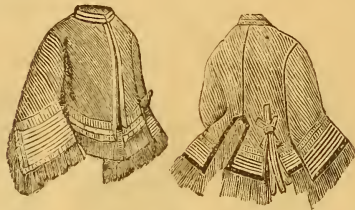
Front. 713 Back.
Lady's Loose Basque.
Bust Measure, 30 to 46 inches.
9 sizes, 20 cents each.
Quantity of mat'l, 27 ins., 3 yds.



525—Front.
Lady's Basque, with Vest Front.
Bust Meas. 30 to 46 ins.
9 sizes, 20c. each. Quantity
of mat'l, 27 ins., 3 $\frac{1}{2}$ yds.



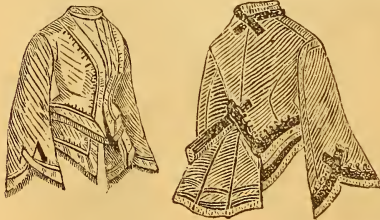
Front. 719 Back.
Lady's Half-Tight Casaque.
Bust Measure, 30 to 46 inches.
9 sizes, 20 cents each.
Quantity of material, 27 ins. wide, 3 yds.



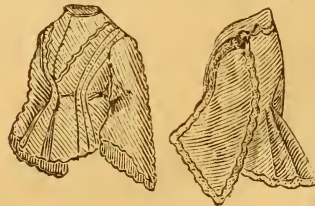
Front. 528 Back.
Lady's Slashed Basque.
Bust Measure, 30 to 46 inches.
9 sizes, 20 cents each.
Quantity of material, 27 ins. wide, 3 yds.



401—Back.
Lady's Basque, with Pointed
Bust Meas 30 to 46 in. [Front.
9 sizes, 20c. each. Quantity
of mat'l, 27 ins., 3 yds.



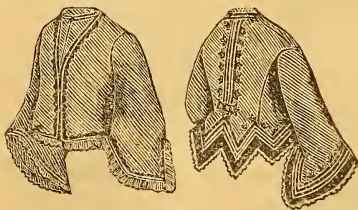
Front. 530 Back.
Lady's Street Basque.
Bust Measure, 30 to 46 inches.
9 sizes, 20 cents each.
Quantity of material, 27 ins. wide, 3 yards.



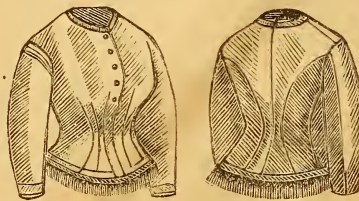
Front. 405 Back.
Lady's Scooped Basque.
Bust Measure, 30 to 46 inches.
9 sizes, 25 cents each.
Quantity of material, 27 ins. wide, 3 yds.



506—Back.
Lady's Tight Basque.
Bust Meas. 30 to 46 ins.
9 sizes, 20c. each. Quantity
of mat'l, 27 ins., 3 $\frac{1}{2}$ yds.



Front. 409 Back.
Lady's Half-Tight Basque.
Bust Measure, 30 to 46 inches.
9 sizes, 20 cents each.
Quantity of material, 27 ins. wide, 3 yards.

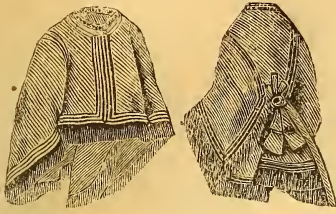


Front. 451 Back.
Lady's Plain Basque.
Bust Measure, 30 to 46 inches.
9 sizes, 20 cents each.
Quantity of material, 27 ins. wide, 3 yds.



236—Side.
Lady's Tight Basque, with
Pointed Front.
Bust Measure, 30 to 46 ins.
9 sizes, 20c. each. Quantity
of mat'l, 27 ins., 3 yds.

J. B. Small, Manufacturer of Patterns for all kinds of garments for Ladies, Misses and little Children of either sex. Patterns sent by mail, on receipt of price and bust measure, to any part of the United States or Canada. They can also be had by calling at our Sales-room. The best Sewing Machine for the manufacture of these goods is, decidedly, the Willcox & Gibbs. It makes the most secure and elastic seam known, and as its mechanism is free from the complexities of the double-thread machines, it is exceedingly light running and easy to learn. This is evidenced by the fact, that every year many thousands of the best families are exchanging their heavy-running, troublesome, double-thread machines—even those of the latest make—for the Willcox & Gibbs, which invariably gives satisfaction.



Front. 721 Back.
Lady's Mantle, with Sack Front.
Bust Measure, 30 to 46 ins.
9 sizes, 25 cents each.
Quantity of material, 27 ins. wide, 3 3/4 yds.



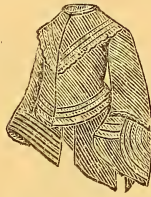
503—Side.
Lady's Worth Basque.
Bust Measure, 30 to 46 inches.
9 sizes, 20 cents each.
Quantity of mat'l, 27 ins. wide, 3 1/2 yds.



702—Back.
Lady's Half-Fitting Sack.
Bust Measure, 30 to 46 inches.
9 sizes, 20 cents each.
Qu'ty of mat'l, 27 ins., 3 yds.



521—Back.
Lady's Basque.
Bust Meas. 30 to 46 ins.
9 sizes, 20c. each. Qu'ty
of mat'l, 27 ins., 3 1/4 yds.



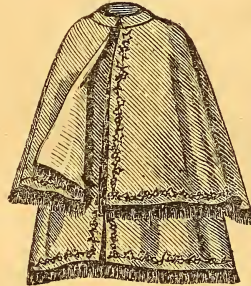
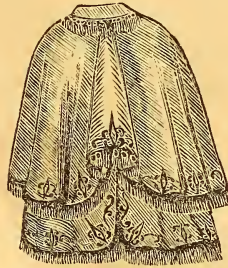
Front. 312 Back.
Lady's House Jacket, with Sack Front.
Bust Measure, 30 to 46 inches.
9 sizes, 20 cents each.
Quantity of material, 27 ins. wide, 3 1/2 yds.



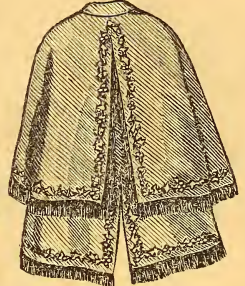
Front. 448 Back.
Lady's Vest-Front Casaque.
Bust Measure, 30 to 46 inches.
9 sizes, 20 cents each.
Quantity of mat'l, 27 ins. wide, 5 yds.



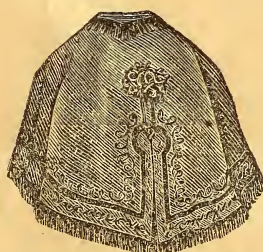
Front. 567 Back.
Lady's Double Cape, with Watteau Fold.
Bust Measure, 30 to 46 inches.
9 sizes, 25 cents each.
Quantity of material, 27 inches wide, 4 1/2 yards.



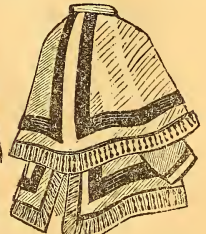
Front. 566 Back.
Lady's Sack and Cape.
Bust Measure, 30 to 46 inches.
9 sizes, 25 cts. each.
Quantity of material, 27 inches wide, 4 yards.



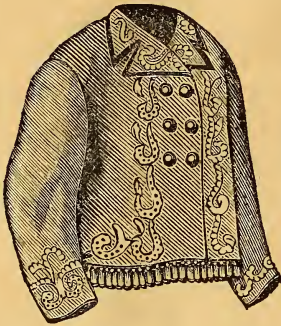
Front. 574 Back.
Lady's Round Cape.
Bust Measure, 30 to 46 inches.
9 sizes, 15 cents each.
Quantity of material, 27 inches wide, 2 yards.



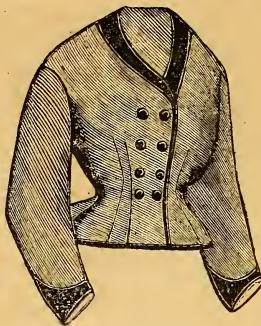
Front. 360 Back.
Lady's Sack and Cape, with Sleeve.
Bust Measure, 30 to 46 inches.
9 sizes, 25 cents each.
Quantity of material, 27 inches, 4 yards.



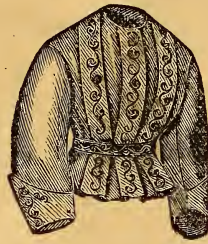
For making these garments the Willcox & Gibbs Silent Machine is decidedly the best. It is proved by long trial that the twisted loop stitch is more elastic and stronger than the shuttle stitch. The tension is more easily regulated than that of any other machine; the needle is self-adjusting, and gives no trouble; and, in short, families who have long used lock-stitch and other machines, are exchanging them at the rate of many thousands per annum for the Willcox & Gibbs.



443—Front.
Lady's Double Breast Sack.
Bust Meas., 30 to 46 ins.
9 sizes, 20 cents each.
Qu'ty of mat'l, 27 ins., 3½ yds.



557—Front.
Lady's Double Breast Tight Basque.
Bust Measure, 30 to 46 inches.
9 sizes, 20 cents each.
Qu'ty of mat'l, 27 ins. wide, 3½ yds.



364
Lady's Pleated Blouse.
Bust Measure, 30 to 46 inches.
9 sizes, 20 cents each.
Qu'ty of mat'l, 27 ins. wide, 4½ yds.



427—Front.
Lady's Dressing Sack.
Bust Meas., 30 to 46 ins.
9 sizes, 20 cents each.
Qu'ty of mat'l, 27 ins., 3½ yds.



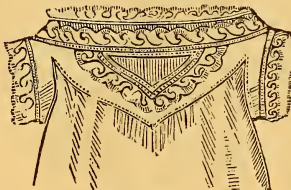
439—Front.
Lady's Night Dress.
Bust Meas., 30 to 46 ins.
9 sizes, 20 cents each.
Qu'ty of mat'l, 36 ins., 6 yds.



357—Front.
Lady's Night Dress.
Bust Meas., 30 to 46 ins.
9 sizes, 20 cents each.
Qu'ty of mat'l, 36 ins. wide, 6 yds.



330—Front.
Lady's Pleated Night Dress.
Bust Meas., 30 to 46 ins.
9 sizes, 20 cents.
Qu'ty of mat'l 36 ins., 6 yds.



347—Front.
Lady's Chemise.
Bust Meas., 30 to 46 ins.
9 sizes, 20 cents each. Qu'ty
of mat'l, 36 ins., 3½ yds.



513—Front.
Lady's Yoke Chemise.
Bust Meas., 30 to 46 ins.
9 sizes, 20 cents each. Qu'ty
of mat'l, 36 ins. wide, 3 yds.



514—Front.
Lady's Chemise, with Band.
Bust Meas., 30 to 46 ins.
9 sizes, 20 cents each. Qu'ty
of mat'l, 36 ins., 2½ yds.



435—Front.
Lady's Chemise.
Bust Meas., 30 to 46 ins.
9 sizes, 20 cents each. Qu'ty
of mat'l 36 ins., 2½ yds.



341—Front.
Lady's Yoke Chemise.
Bust Meas., 30 to 46 ins.
9 sizes, 20 cents each. Qu'ty
of mat'l, 36 ins., 2½ yds.



546—Front.
Lady's Drawers.
Waist Meas., 20 to 30 ins.
6 sizes, 20 cents each. Qu'ty
of mat'l, 36 ins., 2 yds.

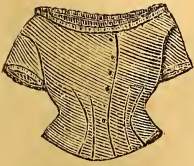


317—Front.
Lady's Drawers.
Waist Meas., 20 to 30 ins.
6 sizes, 20 cents each. Qu'ty
of mat'l, 36 ins. wide, 2 yds.

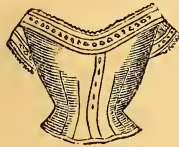


413—Front.
Lady's Turkish Drawers.
Waist Measure, 20 to 30 in.
6 sizes, 20 cents each. Qu'ty
of mat'l, 36 ins., 2 yds.

J. B. Small's Cut Paper Patterns are not Cut by a Chart or Dress Model; and no Pattern can be correct unless the garment is fitted in cloth and submitted to actual test. The Willcox & Gibbs Machine is the proper Machine for this and every kind of family sewing. This is not a mere business statement, but is the earnest testimony of at least ninety-nine per cent of all those persons who have put the merits of different Machines to an impartial test. It is not only the simplest Machine and most easily learnt, but its work, when properly done, is the most lasting, because its seam is the strongest and most elastic known. This accounts for the thousands of families who generally abandon the lock-stitch theory and exchange double-thread Machines for the Willcox & Gibbs.



302—Front.
Lady's Corset Cover.
Bust Measure, 30 to 46 ins.
9 sizes, price 20 cts.
Quantity of material, 36
ins. wide, 1½ yds.



511—Front.
Lady's Corset Cover with Low
Neck. Bust Measure, 30 to 46
ins. 9 sizes, price 20 cts.
each. Qu'ty of mat'l,
36 ins. wide, 1½ yds.



417—Front.
Lady's Low Neck Corset
Cover. Bust Measure, 30 to
46 ins. 9 sizes, price
20 cts each. Qu'ty of mat'l,
36 ins. wide, 1½ yds.



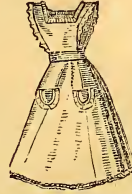
322—Front.
Lady's Blouse Waist.
Bust meas. 30 to 46 ins.
9 sizes, 20 cts. each.
Qu'ty of mat'l, 27
ins. wide, 2½ yds.



780—Back.
Lady's Drapery Over-Skirt.
Waist measure, 30 to 46 ins.
6 sizes, price 25 cts. each.
Qu'ty of mat'l, 27 ins. wide, 4 yds.



709—Front.
Lady's Apron.
1 size, price 15 cts.
Quantity of material, 27
ins. wide, 2½ yds.



710—Front.
Lady's Kitchen Apron.
1 size, price 15 cts
Quantity of material, 27
ins. wide, 3½ yds.



550—Front.
Lady's Apron.
1 size, price 15 cts.
Quantity of material, 27
ins. wide, 2 yds.



900
Lady's Sleeve, with Plea'ed
Cuff. 1 size, price 10 cts.
Quantity of material, 27 ins.
wide, 1 yd.



763
Lady's Half-Flowing Sleeve.
1 size, price 10 cts.
Quantity of material, 27
ins. wide, 1½ yds.



575
Lady's Sleeve, with Deep
Ruffle. 1 size, 10 cts.
Quantity of material, 27 ins
wide, 1½ yds.



825
Lady's Sleeve, with Pleats.
1 size, price 10 cts.
Quantity of material, 27 ins
wide, 1½ yds.

MISS'S AND GIRL'S PATTERNS.



403—Front.
Girl's Sack and Cape.
Ages 5 to 12 years.
6 sizes, price 20 cts. each.
Quantity of material,
27 ins wide, 4½ yds.

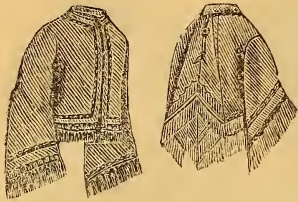


Front. 819 Back.
Miss's Sack and Cape, with Sleeve.
Ages 10 to 15 years.
6 sizes, 25 cents each.
Quantity of material, 27 inches wide, 4½ yards.



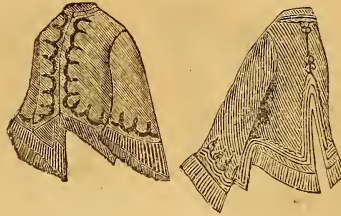
749—Side.
Miss's Polonaise.
Ages 9 to 15 years.
7 sizes, price 25 cents each.
Qu'ty of mat'l, 27 inch's wide,
4½ yards.

In making the above garments, use, if possible, the Willcox & Gibbs Silent Family Sewing Machine, which is decidedly the best adapted for this and every kind of family sewing. Everywhere families are exchanging their double-threads for it, and reap the benefit in quietness, peace, health and practical utility.



Front. 720 Back.
Miss's Watteau Sack.
Ages, 10 to 15 years.
6 sizes, 20 cents each.

Quantity of mat'l, 27 ins. wide, for a girl of 12 years, 2¾ yds.



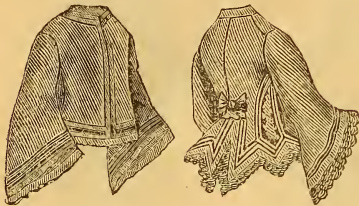
Front. 529 Back.
Miss's Half-Fitting Jacket.
Ages, 10 to 15 years.
6 sizes, 20 cents each.

Quantity of mat'l, 27 ins. wide, for a girl of 12 years, 2¾ yds.



803—Front.
Child's Over Dress.
Ages, 4 to 9 years.
6 sizes, 20c. each.

Quantity of mat'l, 27 ins. wide, for a girl of 6 years, 3 yds.



Front. 313 Back.
Miss's Half-Fitting Basque.
Ages, 10 to 15 years.
6 sizes, 20c. each.

Quantity of mat'l, 27 ins. wide, for a girl of 12 years, 2¾ yds.



Front. 573 Back.
Girl's Polonaise.
Ages, 5 to 12 years.
8 sizes, 20c. each.

Quantity of mat'l, 27 ins. wide, for a girl of 8 years, 3¾ yds.



351—Back.
Girl's Polonaise.
Ages, 9 to 15 years.
7 sizes, 25c. each.

Qu'ty of mat'l, 27 ins. for a girl of 12 years, 5 yds.



520—Front.
Miss's Polonaise.
Ages, 10 to 15 years.
6 sizes, 20 cents each.

Qu'ty of mat'l 27 ins. wide for a girl of 12 yrs., 5 yds.



325—Front.
Miss's Sack and Cape.
Ages, 10 to 15 years.
6 sizes, 25 cents each.

Qu'ty of mat'l, 27 ins. wide for a girl of 12 yrs., 4¾ yds.



815—Side.
Girl's Polonaise.
Ages, 4 to 9 years.
6 sizes, 20c. each.

Qu'ty of mat'l, 27 ins. wide for a girl of 6 yrs., 3 yds.



713—Front.
Girl's Basque.
Ages, 3 to 7 years.
5 sizes, 20c. each.

Qu'ty of mat'l, 27 ins. wide for a girl of 5 yrs., 2 yds.



556—Front.
Miss's Dolly Varden Suit.
Ages, 9 to 15 years.
7 sizes, 25 cents each.

Qu'ty of mat'l, 27 ins. wide for a girl of 12 yrs., 7 yds.



806
Girl's Dress, with Cape.
Ages, 6 to 10 years.
5 sizes, 20 cents each.

Qu'ty of mat'l, 27 ins. wide for a girl of 8 yrs., 6 yds.



320—Front.
Miss's Suit.
Ages, 10 to 15 years.
6 sizes, 25 cents each.

Qu'ty of mat'l, 27 ins. wide for a girl of 12 yrs., 8 yds.



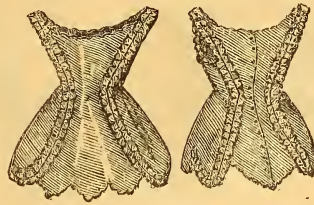
705—Back.
Girl's Walking Suit.
Ages, 5 to 10 years.
6 sizes, 25 cents each.

Qu'ty of mat'l, 27 ins. wide for a girl of 7 yrs., 5 yds.

J. B. Small's Patterns are of different sizes, enabling a large as well as small person to obtain a pattern which will require little or no variation. Send measure and price for any garment illustrated, and you will receive a pattern to correspond, in the latest style, together with a picture of the garment and full directions for making and trimming. We decidedly recommend the Willecox & Gibbs Silent Family Sewing Machine for the manufacture of these goods. It is the best Family Sewing Machine in the market, is easily learnt, never out of order, and makes the most secure and elastic seam known. Thousands of persons every year exchange their troublesome, heavy-running, double-thread machines for it, and find their advantage in additional peace and comfort.



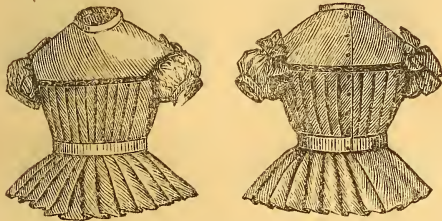
Front. 762 Back.
 Girl's Gored Dress, Pleated in the Back.
 Ages, 5 to 12 years.
 8 sizes, 20 cents each.
 Quantity of mat'l, 27 ins. wide, for a
 girl of 8 years, 3½ yds.



Front. 434 Back.
 Girl's Over-Dress, Low Neck.
 Ages, 4 to 9 years.
 6 sizes, 20 cents each.
 Quantity of material, 27 ins. wide, for a
 girl of 6 years, 2¼ yds.



Front. 735 Back.
 Girl's Jacket.
 Ages, 4 to 9 years.
 6 sizes, 20 cents each.
 Quantity of mat'l, 27 ins. wide, for
 a girl of 6 years, 2 yds.



Front. 903 Back.
 Girl's Pleated Blouse.
 Ages, 3 to 8 years.
 6 sizes, 20 cents each.
 Quantity of material, 27 ins. wide, for a
 girl of 5 years, 2½ yds.



536—Front.
 Girl's Belted Sack.
 Ages, 4 to 9 years.
 6 sizes, 20 cents each.
 Qu'ty of mat'l, 27 ins. wide, for a
 girl of 6 years, 3 yds.



552—Front.
 Child's Gored Dress, High Neck.
 Ages, 6 months to 4 years.
 6 sizes, 20 cents each.
 Qu'ty of mat'l, 27 ins. for a
 child of 2 years, 2½ yds.



808—Front.
 Girl's Dress.
 Ages, 10 to 15 years.
 6 sizes, 25 cents each.
 Qu'ty of mat'l, 27 ins. for a
 girl of 12 years, 6½ yds.



400—Front.
 Girl's Square-Neck Over-Dress,
 with Postillion Back.
 Ages, 3 to 9 yrs.
 7 sizes, 20 cents each.
 Qu'ty of mat'l, 27 ins. for a
 girl of 6 yrs., 2¼ yds.



561—Front.
 Child's Gored Dress,
 with Low Neck.
 Ages, 6 months to 6 years.
 7 sizes, 20 cents each.
 Qu'ty of mat'l, 27 ins. for a
 child of 3 yrs., 3 yds.



711—Front.
 Child's Dress, with Pompa-
 dour Neck.
 Ages, 2 to 6 years.
 5 sizes, 20 cents each.
 Qu'ty of mat'l, 27 ins. for a
 girl of 4 yrs., 3 yds.



726—Front.
 Miss's Skeleton Over-Dress.
 Ages, 10 to 15 years.
 6 sizes, 20c. each.
 Quantity of mat'l, 27 ins. for
 a girl of 12 yrs., 3½ yds.

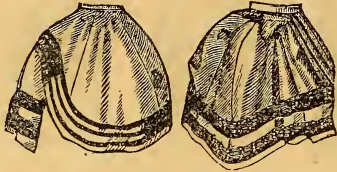


Front. 737 Back.
 Child's Dress, Low Neck.
 Ages, 2 to 7 years.
 6 sizes, 20 cents each.
 Quantity of material, 27 inches wide, for
 a child of 4 years, 3 yards.

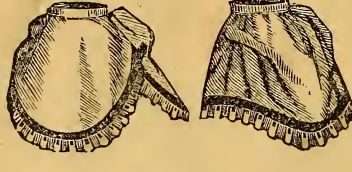


346—Front.
 Child's Gored Slip.
 Ages, 1 to 6 yrs.
 6 sizes, 20 cents each.
 Qu'ty of mat'l, 27 inches wide,
 for a girl of 3 yrs., 2 yds.

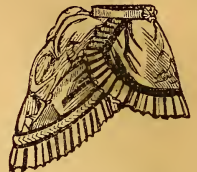
J. B. Small, Manufacturer of Patterns for all kinds of garments for Ladies, Misses and little Children of either sex. Patterns sent by mail, on receipt of price and bust measure, to any part of the United States or Canada. They can also be had by calling at our Sales-room. The best Sewing Machine for the manufacture of these goods is, decidedly, the Willcox & Gibbs. It makes the most secure and elastic seam known, and as its mechanism is free from the complexities of the double-thread machines, it is exceedingly light running and easy to learn. This is evidenced by the fact, that every year many thousands of the best families are exchanging their heavy-running, troublesome, double-thread machines—even those of the latest make—for the Willcox & Gibbs, which invariably gives satisfaction.



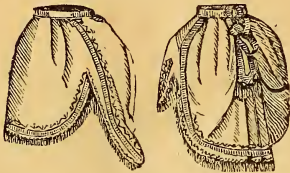
Front. 361 Back.
Miss's Dolly Varden Over Skirt.
Ages, 10 to 15 years.
6 sizes, 15 cents each.
Quantity of material, 27 ins. wide, for a girl of 9 years, 2½ yds.



Front. 816 Back.
Girl's Over Skirt.
Ages, 2 to 9 years.
8 sizes, 15 cents each.
Quantity of material, 27 ins. wide, for a girl of 5 years, 2 yds.



570—Side.
Miss's Over Skirt.
Ages, 9 to 15 years.
7 sizes, 15c. each.
Qu'ty of mat'l, 27 ins. for a miss of 12 yrs., 2½ yds.



Front. 353 Back.
Miss's Over Skirt.
Ages, 7 to 12 year.
6 sizes, 15 cents each.
Quantity of mat'l, 27 ins. wide, for a girl of 9 years, 2½ yards.



Front. 452 Back.
Girl's Over Dress.
Ages, 3 to 8 years.
6 sizes, 15 cents each.
Quantity of mat'l, 27 ins. wide or a girl of 5 years, 2½ yards.



Front. 528 Back.
Miss's Apron.
Ages, 9 to 15 years.
7 sizes, 15c. each.
Qu'ty of mat'l, 27 ins. for a girl of 12 years, 1½ yds.



352—Front.
Miss's Apron.
1 size, 15 cents each.
Qu'ty of mat'l, 27 ins., 1 yd.



Front. 734 Back.
Miss's Over Dress.
Ages, 10 to 15 years.
6 sizes, 20 cents each.
Qu'ty of mat'l, 27 ins., for a girl of 12 yrs., 3 yds.



326—Front.
Child's Over Dress.
Ages, 1 to 5 years
5 sizes, 20 cents each.
Qu'ty of mat'l, 27 ins., for a girl of 3 yrs., 1½ yds.



417—Side.
Miss's Gored Skirt.
Ages, 7 to 15 years.
9 sizes, 20 cents each.
Qu'ty of mat'l, 27 ins., for a girl of 10 yrs., 3½ yds.



741—Front.
Miss's Plain Waist.
Ages, 6 to 15 years.
10 sizes, 15 cents each.
Qu'ty of mat'l, 27 ins., for a girl of 10 yrs., 2 yds.



423—Front.
Girl's French Waist
Ages, 6 to 15 years.
10 sizes, 15 cents each.
Qu'ty of mat'l, 27 ins., for a girl of 10 yrs., 2 yds.



424—Front.
Girl's Waist.
Ages, 4 to 10 years.
7 sizes, 15 cents each.
Qu'ty of mat'l, 27 ins., for a girl of 6 yrs., 1½ yds.



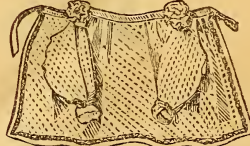
742—Front.
Girl's Yoke Waist.
Ages, 4 to 9 years.
6 sizes, 15 cents each.
Qu'ty of mat'l, 27 ins., for a girl of 5 yrs., 1½ yds.



802—Front.
Girl's Under Waist.
Ages, 3 to 10 years.
8 sizes, 15 cents each.
Qu'ty of mat'l, 27 ins., for a girl of 6 yrs., 1½ yds.



329—Front.
Miss's Corset Cover (Low Neck).
Ages, 10 to 15 years.
6 sizes, 15 cents each.
Qu'ty of mat'l, 27 ins. wide, for a girl of 12 yrs., ½ yd.



Front. 738 Back
Child's Apron.
Ages, 1 to 6 years.
6 sizes, 15 cents each.
Qu'ty of mat'l, 27 ins. wide, for a girl of 3 yrs., 1½ yds.



315—Front.
Child's Sack Apron.
Ages, 1 to 5 years.
5 sizes, 15 cents each.
Qu'ty of mat'l, 27 ins., for a child of 3 yrs., 1½ yds.

For making these garments the Wilcox & Gibbs Silent Machine is decidedly the best. It is proved by long trial that the twisted loop stitch is more elastic and stronger than the shuttle stitch. The tension is more easily regulated than that of any other machine; the needle is self-adjusting, and gives no trouble; and, in short, families who have long used lock-stitch and other machines, are exchanging them at the rate of many thousands per annum for the Wilcox & Gibbs.



404—Front.
Child's Low Neck Apron.
Ages, 1 to 6 years.
6 sizes, 15 cents each.
Qu'ty of mat'l, 27 ins. wide,
for a child of 3 yrs., 1¼ yds.



554—Front.
Child's Gored Apron.
Ages, 2 to 6 years.
5 sizes, 15 cents each.
Qu'ty of mat'l, 27 ins. wide,
for a child of 4 yrs., 2 yds.



700—Front.
Child's Apron.
Ages, 1 to 5 years.
5 sizes, 15 cents each.
Qu'ty of mat'l, 27 ins. wide,
for a child of 3 yrs., 1½ yds.



362 Front.
Child's Sack Apron.
Ages, 1 to 6 yrs.
6 sizes, 15 cents each.
Qu'ty of mat'l, 27 ins. wide,
for a child of 4 yrs., 2 yds.



558—Front.
Child's High Neck Apron.
Ages, 1 to 6 years.
6 sizes, 20 cents each.
Qu'ty of mat'l, 27 ins. wide,
for a child of 3 yrs., 1¼ yds.



442—Front.
Miss's Apron.
1 size, price 15 cents.
Qu'ty of mat'l, 27 ins. wide,
1 yard.



333—Back.
Miss's Slashed Sack.
Ages, 10 to 15 yrs.
6 sizes, 20 cents each.
Qu'ty of mat'l, 27 ins. wide, for
a child of 12 yrs., 2¼ yds.



319—Side.
Girl's Slashed Sack.
Ages, 4 to 9 years.
6 sizes, 20 cents each.
Qu'ty of mat'l, 27 ins. wide,
for a child of 6 yrs., 1¼ yds.



801—Front.
Child's Plain Sack.
Ages, 2 to 10 yrs.
9 sizes, 20 cents each.
Qu'ty of mat'l, 27 ins. wide, for a
girl of 10 years, 2 yds.



338 Front.
Miss's Short Sack.
Ages, 10 to 15 years.
6 sizes, 20c. each.
Qu'ty of mat'l, 27 ins. wide, for
a girl of 12 years, 2¼ yds.



541 Front.
Miss's Postillion Basque.
Ages, 10 to 15 years.
6 sizes, 20c. each.
Quantity of mat'l, 27 ins. wide,
for a girl of 12 years, 2¼ yds.



426—Side.
Miss's Double-Breast Basque.
Ages, 10 to 15 years.
6 sizes, 20 cents each.
Qu'ty of mat'l, 27 ins., for a
girl of 12 yrs., 2¼ yds.



420—Side.
Miss's Postillion Basque.
Ages, 10 to 15 years.
6 sizes, 20 cents each.
Qu'ty of mat'l, 27 ins. for a
girl of 12 yrs., 2¼ yds.



714—Back.
Girl's Tight Basque.
Ages, 4 to 9 years.
6 sizes, 20 cents each.
Qu'ty of mat'l, 27 ins. for a
girl of 6 yrs., 1¼ yds.



308—Front.
Girl's Pleated Blouse.
Ages, 3 to 9 years.
7 sizes, 20 cents each.
Qu'ty of mat'l, 27 ins., for a
girl of 5 yrs., 1¼ yds.



535—Front.
Child's Cover Dress.
Ages, 2 to 6 yrs.
5 sizes, 20 cents each.
Qu'ty of mat'l, 27 ins. for a
girl of 4 years, 1¼ yds.



522—Front.
Girl's Slashed Basque.
Ages, 6 to 10 yrs.
5 sizes, 20 cents each.
Qu'ty of mat'l, 27 ins. for a
girl of 8 yrs., 1¼ yds.

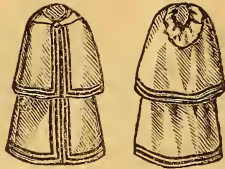


356—Front.
Child's Plain Sack.
Ages, 1 to 6 yrs.
6 sizes, 15 cents each.
Qu'ty of mat'l, 27 ins. for a
child of 3 yrs., 1¼ yds.

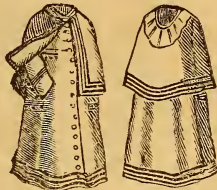


324—Back.
Child's Over Garment.
Ages, 5 to 9 yrs.
5 sizes, 20 cents each.
Qu'ty of mat'l, 27 ins. for a
child of 7 yrs., 3 yds.

In making the above garments, use, if possible, the Willcox & Gibbs Silent Family Sewing Machine, which is decidedly the best adapted for this and every kind of family sewing. Everywhere families are exchanging their double-threads for it, and reap the benefit in quietness, peace, health and practical utility.



Front. 759 Back.
 Girl's Waterproof Circular, with Cape and Hood. Ages, 2 to 15 years.
 14 sizes, 25 cents each.
 Qu'ty of mat'l, 54 ins. wide, for a girl of 8 years, 2½ yds.



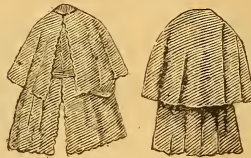
Front. 811 Back.
 Girl's Waterproof Sack, with Cape and Hood. Ages, 5 to 15 years.
 11 sizes, 25 cents each.
 Qu'ty of mat'l, 54 ins. wide, for a girl of 9 years, 2½ yds.



Front. 751 Back.
 Girl's Waterproof Circular Cloak. Ages, 2 to 15 years.
 14 sizes, 20 cents each.
 Qu'ty of mat'l, 54 ins. wide, for a girl of 8 years, 2½ yds.



Front. 355 Back.
 Girl's Waterproof Cloak, with Hood. Ages, 2 to 15 years.
 14 sizes, 20 cents each.
 Qu'ty of mat'l, 54 ins. wide, for a girl of 8 years, 2 yds.



Front. 342 Back.
 Child's Belted Sack, with Cape. Ages, 6 months to 4 years.
 5 sizes, 20 cents each.
 Qu'ty of mat'l, 27 ins. wide, for a girl of 2 years, 2 yds.



Front. 449 Back.
 Child's Night Drawers, with Feet. Ages, 1 to 9 years.
 9 sizes, 25 cents each.
 Qu'ty of mat'l, 27 ins. wide, for a child of 5 years, 2 yds.



755—Front.
 Miss's Night Dress. Ages, 9 to 15 years.
 7 sizes, 20 cts. each. Qu'ty of mat'l, 27 ins. wide, for a girl 12 years, 4½ yds.



415—Front.
 Miss's Chemise. Ages, 6 to 15 years.
 10 sizes, 20 cts. each. Qu'ty of mat'l, 27 ins. wide, for a girl of 12 years, 2 yds.



563—Front.
 Miss's Yoke Chemise. Ages, 10 to 15 years.
 6 sizes, 20 cts. each. Qu'ty of mat'l, 27 ins. wide, for a girl of 12 years, 2 yds.



733—Front.
 Girl's Chemise, with Band. Ages, 3 to 15 years.
 13 sizes, 20 cts. each. Qu'ty of mat'l, 27 ins. wide, for a girl of 10 years, 1½ yds.



410—Front.
 Child's Plain Chemise. Ages, 1 to 6 years.
 6 sizes, 15 cts. each. Qu'ty of mat'l, 27 ins. wide, for a girl of 3 years, ¾ yd.



723—Front.
 Child's Night Dress. Ages, 1 to 5 years.
 5 sizes, 20 cts. each. Qu'ty of mat'l, 27 ins. wide, for a girl of 3 years, 2 yds.



542—Front.
 Child's Drawers. Ages, 2 to 15 years.
 14 sizes, 20 cts. each. Qu'ty of mat'l, 27 ins. wide, for a girl of 8 years, 1½ yds.



343—Front.
 Girl's Turkish Drawers. Ages, 2 to 15 years.
 14 sizes, 20 cts. each. Qu'ty of mat'l, 27 ins. wide, for a girl of 8 years, 1½ yds.



436—Front.
 Child's Drawers, with Under Waist. Ages, 1 to 10 years.
 10 sizes, 20 cts. each. Qu'ty of mat'l, 27 ins. wide, for a girl of 5 years, 2 yds.



740—Front.
 Child's Night Drawers. Ages, 1 to 6 years.
 6 sizes, 20 cts. each. Qu'ty of mat'l, 27 ins. wide, for a child of 3 years, 1¼ yds.



545—Front.
 Child's Leggings. Ages, 2 to 8 years.
 7 sizes, 15 cts. each. Qu'ty of mat'l, 27 ins. wide, for a child of 4 years, 1 yd.

The Willcox & Gibbs Silent Family Sewing Machine is decidedly the best machine for making these garments. It is easier to operate by far than any double-thread or lock-stitch machine known.

INFANT'S PATTERNS.



732
 Infant's Robe Dress.
 1 size, 20 cents.
 Quantity of material, 36 ins.
 wide, 3½ yds.



540
 Infant's Cloak, with Hood and Cape.
 1 size, 20 cents.
 Quantity of material, 27 ins.
 wide, 3½ yds.



431
 Infant's Petticoat.
 1 size, 20 cents.
 Qu'ty of mat'l, 27 ins., 1½ yds.



337
 Infant's Night Slip.
 1 size, 20c.
 Qu'ty of mat'l, 27 in., 2½ yd



412
 Infant's Yoke Slip.
 1 size, 20c.
 Quantity of mat'l, 36 ins.
 wide, 1½ yds.



339
 Infant's Shirt.
 1 size, 10c
 Qu'ty of mat'l, 36 ins. wide,
 for ½ dozen, 1½ yds.



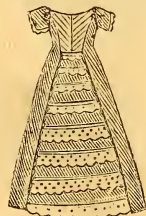
411
 Infant's Bib Apron.
 1 size, 15c.
 Qu'ty of mat'l, 27 ins. wide,
 for ½ dozen, 1¼ yds.



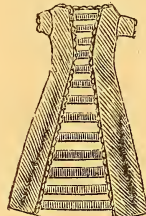
316
 Infant's Bib Apron.
 1 size, 15c.
 Qu'ty of mat'l, 27 ins. wide,
 for ½ dozen, 1¼ yds.



433
 Infant's Dress, with full Back.
 1 size, 20 cents.
 Qu'ty of mat'l, 36 ins. wide,
 2 yards.



804
 Infant's Robe, High Neck.
 1 size, 20 cents.
 Qu'ty of mat'l, 36 ins. wide,
 2½ yards.



539
 Infant's Gored Slip.
 1 size, 20 cents.
 Qu'ty of mat'l, 36 ins. wide,
 2 yards.



354
 Infant's Yoke Slip.
 1 size, 20 cents.
 Qu'ty of mat'l, 36 ins. wide,
 3 yards.



750
 Infant's Gored Dress, full
 in Back.
 1 size, 20 cents.
 Qu'ty of mat'l, 36 ins. wide,
 2 yards.



800
 Infant's Belted Sack.
 1 size, 20 cents.
 Quantity of mat'l, 27 ins. wide,
 3 yards.



572
 Infant's Sack.
 1 size, 15c.
 Quantity of material, 27 ins.
 wide, ¾ yard.



760
 Baby's Drawers.
 1 size, 15c.
 Quantity of mat'l, 27 ins.
 wide, ¾ yard.

For making these garments the Willcox & Gibbs Silent Machine is decidedly the best. It is proved by long trial that the twisted loop-stitch is more elastic and stronger than the shuttle-stitch. The tension is more easily regulated than that of any other machine; the needle is self-adjusting, and gives no trouble; and, in short, families who have long used lock-stitch and other machines, are exchanging them at the rate of many thousands per annum for the Willcox & Gibbs.

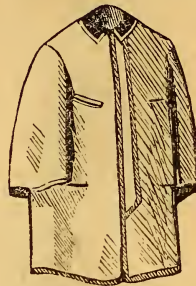
GENT'S AND BOY'S PATTERNS.



746—Front.
Gent's Dressing Gown.
39 to 48 ins. Breast Meas.
19 sizes, 25 cents each.
Qu'ty of mat'l, 27 ins. wide,
for a medium size, 4 yds.



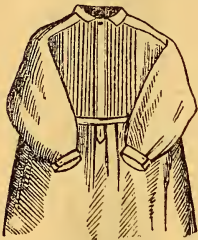
340—Front.
Gent's Smoking Jacket.
30 to 44 ins. Breast Meas.
15 sizes, 25 cents each.
Qu'ty of mat'l, 27 ins. wide,
for a medium size, 4 yds.



752—Front.
Boy's Over Coat, with Cape
forming a Sleeve. Ages, 6
to 15 years. 10 sizes, 25 cts.
each. Qu'ty of mat'l, 54 ins.,
for a boy of 10 years, 2½ yds.



553—Front.
Youth's Suit.
Ages, 8 to 15 years.
8 sizes, 20 c. each. Qu'ty
of mat'l for suit, 27 ins.,
for a boy of 10 years, 3¾ yds.



414—Front.
Gent's Yoke Shirt.
34 to 48 ins. Breast Meas.
15 sizes, 25 cents each.
Qu'ty of mat'l, 36 ins. wide,
for a pair, 5½ yds.



817—Front.
Gent's Night Shirt.
34 to 48 ins. Breast Meas.
15 sizes, 20 cents each.
Qu'ty of mat'l, 36 ins. wide,
for a medium size, 4 yds.



445—Front.
Boy's Double Breast. Sack
Over Coat. Ages, 6 to 15
years. 10 sizes, 25 cts. each.
Qu'ty of mat'l, 27 ins. wide,
for a boy of 10 years, 3 yds.



565—Front.
Boy's Over Coat and Pants.
Ages, 6 to 12 years.
7 sizes, 20 cents each.
Qu'ty of mat'l, 27 ins. wide,
for a boy of 6 years, 3¾ yds.



739—Front.
Boy's Double Breast. Over
Coat and Pants. Ages, 4 to
9 years. 6 sizes, 20 c. each.
Qu'ty of mat'l, 27 ins. wide,
for a boy of 6 yrs., 3¾ yds.



764—Front.
Boy's Victor Sailor Suit.
Ages, 4 to 12 years. 9 sizes,
25 cents each. Qu'ty of mat'l,
27 ins. wide, for the suit
for a boy of 9 yrs., 3¾ yds.



340—Front.
Boy's Suit.
Ages, 1 to 6 years.
6 sizes, 20 cents each.
Qu'ty of mat'l, 27 ins.,
for a child of 2 yrs., 2½ yds.



425—Front.
Boy's Knickerbocker Suit.
Ages, 4 to 9 years.
6 sizes, 25 cents each.
Qu'ty of mat'l, 27 ins. wide,
for a boy of 6 yrs., 3¾ yds.

J. B. Small, Manufacturer of Patterns for all kinds of garments for Ladies, Misses and Children of either sex. Patterns sent by mail, on receipt of price and bust measure, to any part of the United States or Canada. They can also be had by calling at our Sales-room. The best Sewing Machine for the manufacture of these goods is, decidedly, the Willcox & Gibbs. It makes the most secure and elastic seam known, and as its mechanism is free from the complexities of the double-thread machines, it is exceedingly light running and easy to learn. This is evidenced by the fact, that every year many thousands of the best families are exchanging their heavy-running, troublesome, double-thread machines—even those of the latest make—for the Willcox & Gibbs, which invariably gives satisfaction.



904
Boy's Suspender
Pants.
Ages, 8 to 15 years.
8 sizes, 20c. each.
Qu'ty of mat'l, 27 ins. wide,
for a boy of 11 yrs., 2½ yds.



902
Boy's Pants, with Pleated
Back.
Ages, 3 to 10 years.
8 sizes, 15c. each.
Qu'ty of mat'l, 27 ins. wide,
for a boy of 6 yrs., 1½ yds.



438
Gent's and Boy's
Drawers.
Waist Meas. 23 to 44 ins.
22 sizes, 20c. each.
Qu'ty of mat'l, 27 ins. wide,
medium size, 2¾ yds.



826
Boy's Pants, Pleated at
the Top.
Ages, 3 to 9 years.
8 sizes, 15c. each.
Qu'ty of mat'l, 27 ins. wide,
for a boy of 6 yrs., 1½ yds.



Front. 571 Back.
Boy's Double Breasted
Jacket.
Ages, 7 to 15 years.
9 sizes, 20 cents each.
Qu'ty of mat'l, 27 ins., for a
boy of 11 yrs., 2¾ yds.



562
Boy's Jacket.
Ages, 6 to 12 years.
7 sizes, 15 cents each.
Qu'ty of mat'l, 27 ins., for a
boy of 9 yrs., 2 yds.



827
Boy's Single Breast.
Vest.
Ages, 6 to 15 years.
10 sizes, 15 cents each.
Qu'ty of mat'l, for the front,
for a boy of 9 yrs., ½ yd.



905
Boy's English
Vest.
Ages, 5 to 15 years.
11 sizes, 15 cents each.
Qu'ty of mat'l, for the front,
for a boy of 9 yrs., ½ yd.



519.
Boy's Kilt Suit.
Ages, 2 to 5 years.
4 sizes, 20 cents each.
Qu'ty of mat'l, 27 ins., for a
boy of 2 yrs., 2¾ yds.



712.
Boy's Pleated Blouse.
Ages, 3 to 5 years.
4 sizes, 20 cents each.
Qu'ty of mat'l, 27 ins., for a
boy of 4 yrs., 1¾ yds.



327.
Boy's Blouse and Knicker-
bocker Pants
Ages, 4 to 9 years.
6 sizes, 20 cents each.
Qu'ty of mat'l, 27 ins., for a
boy of 9 yrs., 4¾ yds.



323.
Boy's Blouse and Pants.
Ages, 4 to 9 years.
6 sizes, 20 cents each.
Qu'ty of mat'l, 27 ins., for a
boy of 6 yrs., 2¾ yds.

NOTICE TO LADIES THAT MAKE THEIR OWN OR CHILDREN'S CLOTHING.

Perfect Fitting Patterns of Garments Warranted.

Every lady knows the difficulty of procuring correct Patterns at any price. We make a specialty of Ladies', Misses' Boys' and little Children's Patterns of every style, age and size. We devote our whole attention to that business, and are not connected with any other, and warrant every Pattern we sell to be correct, and the exact size that is printed on the label. We do not hesitate to warrant every Pattern we sell to fit a large as well as a small person; and in so doing, we mean to be understood to say that each Pattern will make a perfect-formed garment of the size and kind printed on the labels, if attention is paid to them. We know no other pattern or fashion manufacturer that possesses the secrets by which we grade our Patterns; and without those secrets it is impossible to give Patterns of the different sizes. Every Pattern we offer for sale is first fitted in cloth, and made to fit perfect, before being graded, by a perfect mathematical test, only known to ourselves.

We consider it as necessary that there should be different sized Patterns for ladies' and children's garments as for gentlemen and boys' ready-made clothing, or different-sized boots and shoes. Our long experience of sixteen years in the Pattern business enables us to know there is more than one or three sizes needed to fit every form. We have positive proof that all the sizes given under each picture of the garment, in this Catalogue, is really needed.

We supply HARPER & BROTHERS with all the suits of cut Paper Patterns given in each issue of the *Bazar*, and they have been sent to all parts of the United States and Canada; and we have yet to hear of the first case where they have failed to give entire satisfaction.

Each Pattern has our name printed on the label. None others are genuine.

Agents will be supplied with our Patterns on reasonable terms.

Call or address

Cor. Bleecker Street.

J. B. SMALL, Salesroom, 643 Broadway.



J. B. SMALL

Cut Paper Patterns of Perfect Fitting Garments.

The qualities which recommend these Patterns over all others are as follows :

FIRST.

Our Patterns are of different sizes, enabling a large as well as small person to obtain a Pattern which will require little or no variation.

SECOND.

Each garment is fitted in cloth, and made to fit perfect, before the different sizes are graded.

THIRD.

Each Pattern has a label with picture of garment, and full instructions how to cut, make, trim, amount of cloth and trimming required, and size.

FOURTH.

Our Patterns are not cut by a *chart* or *dress* model; and no Pattern can be correct unless the garment is fitted in cloth, and submitted to an actual test.

FIFTH.

Our Ladies' Patterns of Outside Garments are in nine sizes, 30 to 46 inches bust measure; no odd sizes; plain waist, in nineteen sizes, 28 to 46 inches bust measure. Misses' Garments, nine to fifteen years, seven sizes. Children's Garments, one to eight years. Boys' Coats, Vests and Pants in various styles, from three to fifteen years.

SIXTH.

All the difficult parts in each piece of the Pattern are notched and punched, so the garment can be put together by the most inexperienced.

NOTICE.

In ordering Patterns, please select from Catalogue, as no other Pattern will be sent, and we do not exchange. For Lady's, send number of Pattern and bust measure; for Miss's and Children's, send number, age and measure. Write Name, State and County very plain.