The image shows a close-up of a marbled paper pattern. The pattern consists of large, irregular, brownish-tan spots or 'cells' that are separated by a network of thin, light-colored veins. Interspersed among these brown spots are smaller, more irregular shapes in shades of blue and red. The overall effect is a complex, organic, and somewhat abstract design. In the bottom-left corner, there is a small, white, rectangular label with a slightly irregular shape, containing handwritten text in black ink.

F
459
.L8K6

LIBRARY OF CONGRESS.

^F
Chap. 457 Copyright No.

Shelf : 457

UNITED STATES OF AMERICA.

• THE •
◁ LOUISVILLE ∴ CYCLONE ▷



LIBRARY OF CONGRESS.

Chap. *2* Copyright No.

Shelf *3335*

UNITED STATES OF AMERICA.

LOUISVILLE, KY.

AFTER THE

CYCLONE.

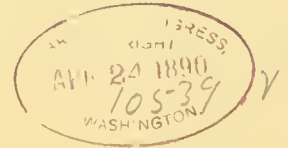
MARCH 27, 1890.

PHOTO-GRAVURES

Published by E. KLAUBER, PHOTOGRAPHER AND ART DEALER,

LOUISVILLE, KENTUCKY.

COPYRIGHTED 1890.



F 159
L8K6



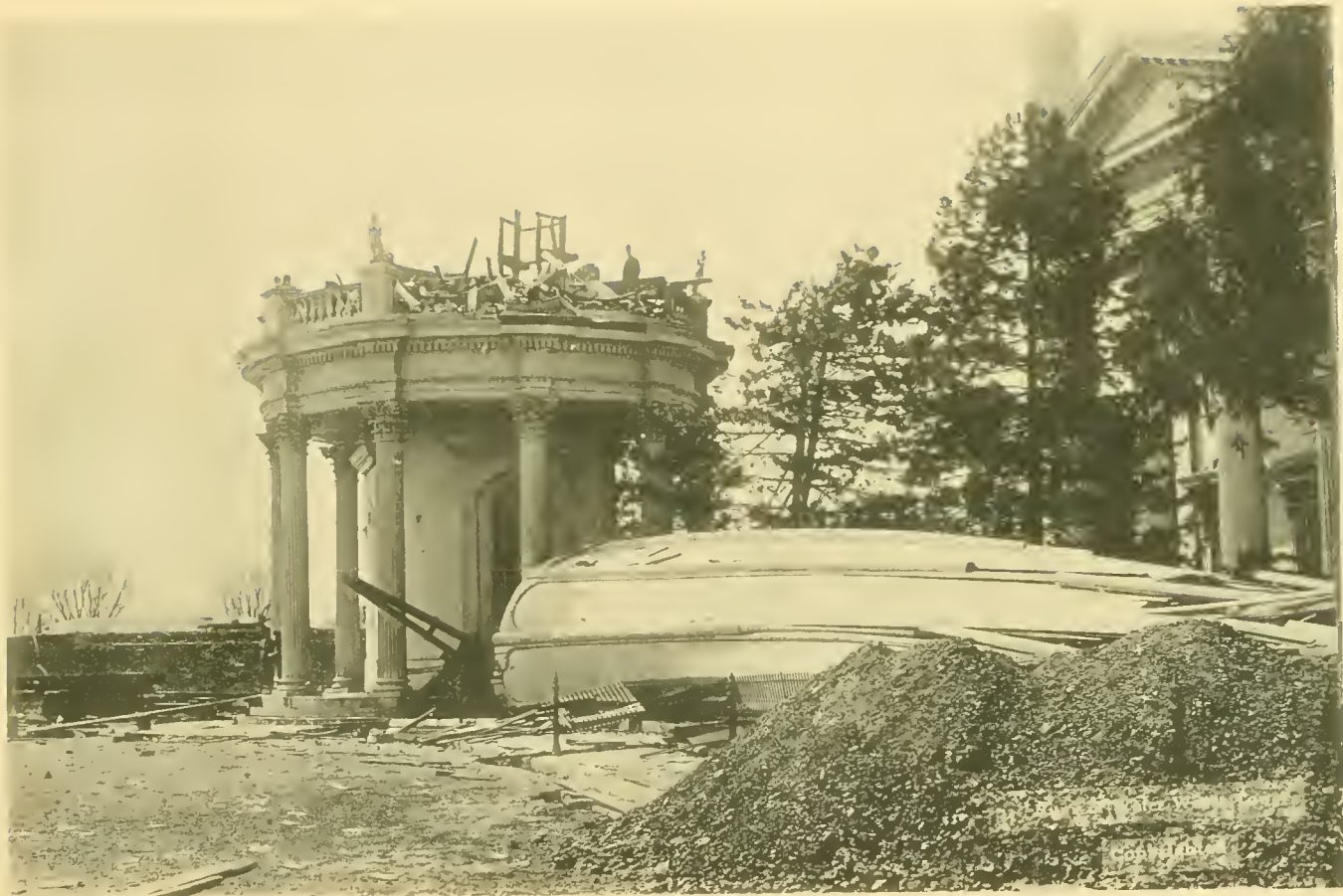
UNION DEPOT.



ST. JOHN'S CHURCH AND HOME OF RECTOR BARNWELL.



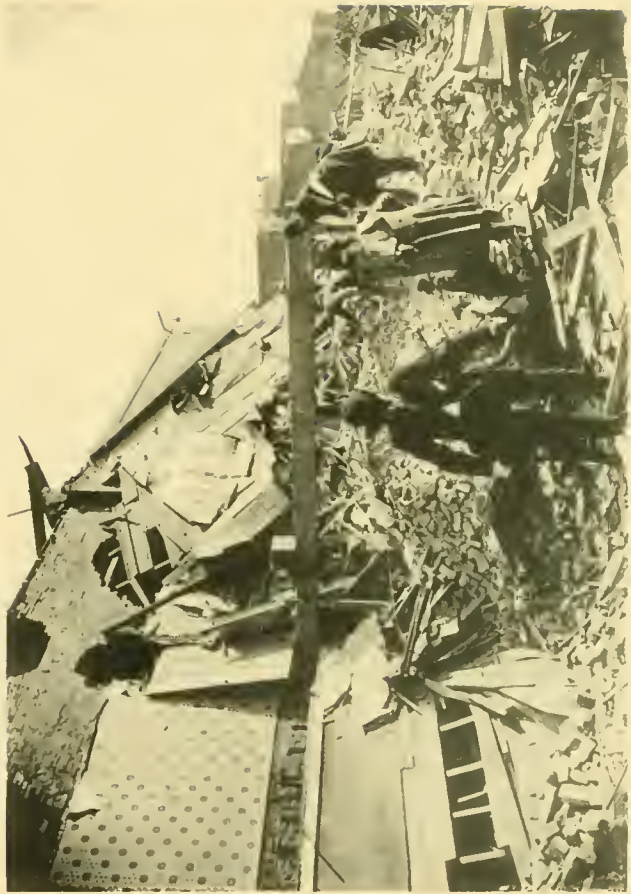
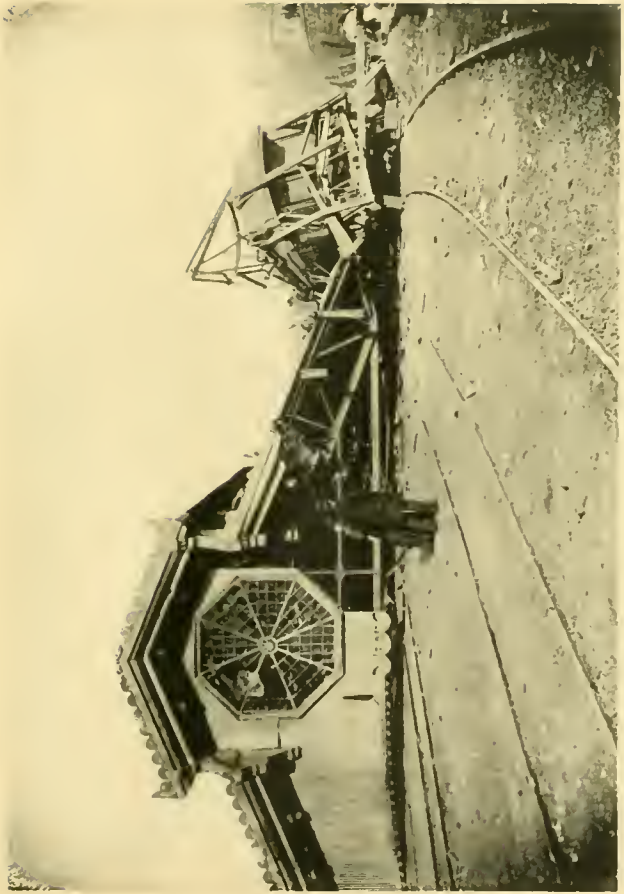
MARKET STREET BETWEEN TENTH AND ELEVENTH.



RUINS OF WATER WORKS TOWER.

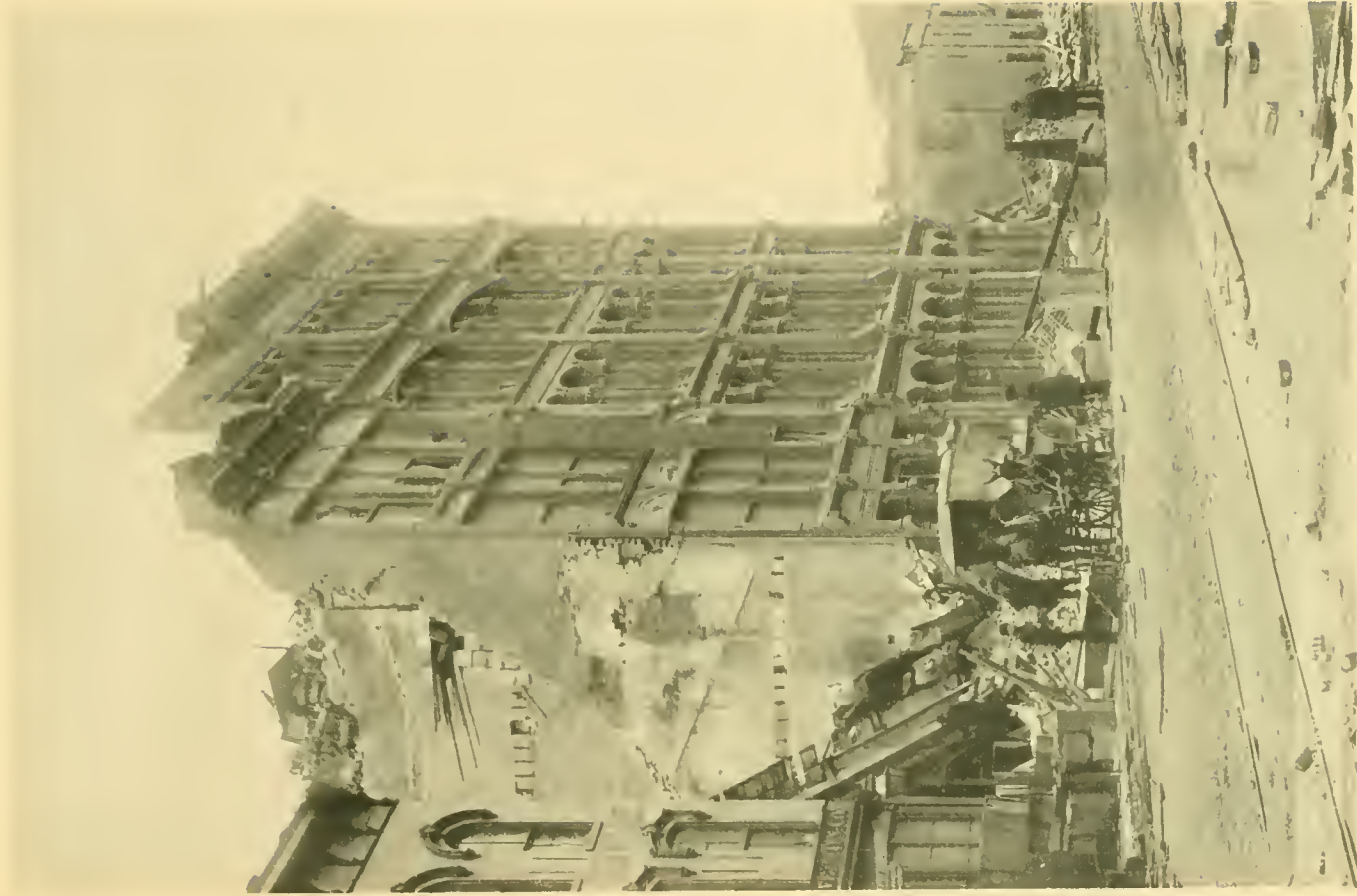


BAXTER PARK.





CENTRAL, AND OTHER TOBACCO WAREHOUSES.



MAIN ST. BETWEEN SEVENTH AND EIGHTH STREETS.



FALLS CITY HALL.



BROADWAY NEAR SEVENTEENTH STREET.



The McK. & Wm. See, looking east

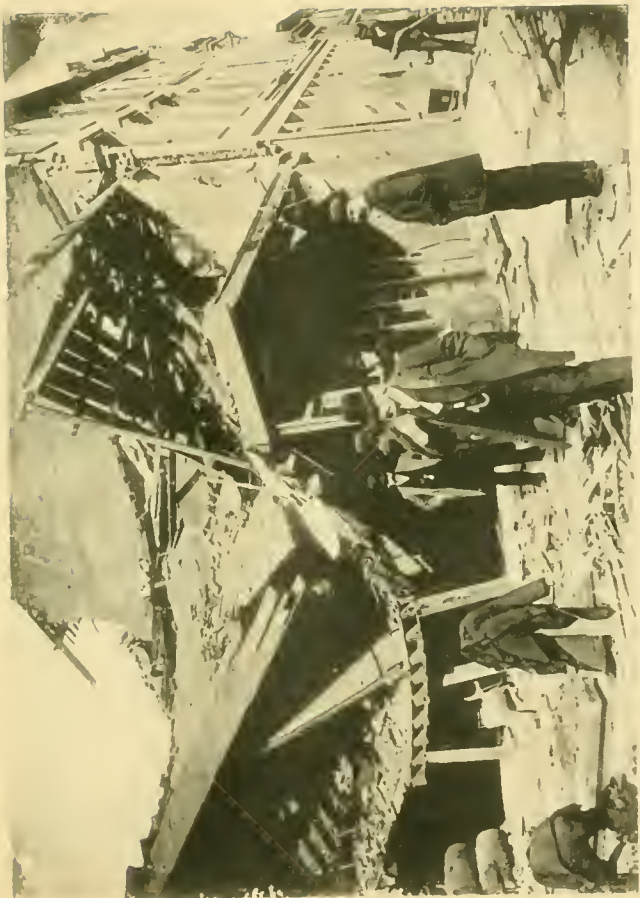
MARKET AND ELEVENTH STREETS.



CHURCH OF SACRED HEART.



MAGAZINE AND SEVENTEENTH STREETS.





SCHWARTZ TOBACCO FACTORY, CHAPEL STREET.



NINTH STREET TOBACCO WAREHOUSE.



CHESTNUT AND FIFTEENTH STREETS.



BROADWAY AND SEVENTEENTH STREETS.



MARKET AND TENTH STREETS.



LOUISVILLE HOTEL AND WRIGHT'S CIGAR STORE.



DR. GRIFFITH'S RESIDENCE.



EIGHTH AND MAIN STREETS.





11 Congress Alley N.Y. 219

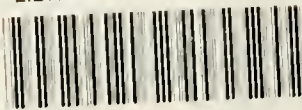
Copyrighted

CONGRESS ALLEY.





LIBRARY OF CONGRESS



0 014 571 977 A