

RG 331, National Archives and Records Service

Allied Operational and Occupation
Headquarters, World War II

SUPREME COMMANDER FOR THE ALLIED POWERS

Civil Affairs Section
Tokai-Hokuriku Civil Affairs Region
Reparations
1946-51

01-86 to 09-6

Box No. 2864

(Compiled by *National Diet Library*)

K. H

GHQ/SCAP Records (RG 331, National Archives and Records Service)

Description of contents

- (1) Box no. 2864
- (2) Folder title/number: (1)
Nippon Hassoden - Meiko Plant

(3) Date: Oct. 1946 - May 1951

(4) Subject:

Classification	Type of record
9230, 9617	a, c, i

(5) Item description and comment:
Nagoya

(6) Reproduction: Yes No

(7) Film no.

Sheet no.

(Compiled by *National Diet Library*)

Meiko Power Plant

18 th May 1951

To : Tokai Hokuriku Civil affairs Region.

From : Meiko Power Plant.

1 Isshu-cho, Minato-ku, Nagoya-city.

Subject : Application for taking photograph of
Meiko Power Plant (reparation designated
Plant.)

Commemorating the dissolution of Nippon
Hassoden K.K., we want to take the whole
view photograph of our Plant for which you
are kindly requested to be good enough to
grant your approval.

Signature

Shikao Asada
Shikao Asada

For the chief custodian
of Meiko Power Plant
(Code No. 01-86)

775013

*Q-9
ECON*

GENERAL HEADQUARTERS
SUPREME COMMANDER FOR THE ALLIED POWERS
Economic and Scientific Section
APO 500

TOKAI-HOKURIKI INFORMATION CA Sec Copy
DEC 29 1950
O.D. 11

387.6(11 Dec 50)ESS/IND

WT/MWH/RAS/mcp
11 December 1950

MEMORANDUM FOR: Reparations Agency, Tokyo

SUBJECT: Application for Movement and Authorized Use
of Items Listed for Reparations

1. Reference is attached R.A.R. No. 1423(MS), 26 October 1950, subject: Application for Intercompany Movement and Authorized Use of Reparations Equipment of Shimizu Power Plant (Code No. 37-36), Japan Electric Generation and Transmission Co., Ltd (Nippon Hassoden K.K.), Filed by Meiko Power Plant (Code No. 01-86) of Same Company.

2. The application requesting permission for the transfer and authorized use of the thirty-three (33) items of reparations machinery and equipment listed in reference 1, above, is approved as indicated below:

Japan Electric Generation and Transmission Co., Ltd
Inter-plant Transfer

<u>Present Location</u>	<u>No. of Items</u>	<u>To be Transferred To</u>
Shimizu Power Plant (37-36)	33	Meiko Power Plant (01-86) ✓

3. This permit is issued subject to any and all directives affecting reparations plants which have been issued or may hereafter be issued by the Supreme Commander for the Allied Powers. Reports will be rendered as required by current directives and instructions.

FOR THE CHIEF, ECONOMIC AND SCIENTIFIC SECTION:

1 Incl
as indicated (dup)

MAURICE M. CLASS
Chief, Industry Division

Cys furnished:
CA Sec (2)
CPC

MEMO FOR RECORD:

The above ltr is self-explanatory.

Mr. R.A. Steele
26-7842

M. M. C.

TO : GENERAL HEADQUARTERS, SUPREME COMMANDER FOR THE ALLIED POWERS.

FROM : Reparations Agency, Tokyo.

SUBJECT: Application for Intercompany Movement and Authorized Use of Reparations Equipment of Shimizu Power Plant (Code No. 37-36), Japan Electric Generation and Transmission Co., Ltd. (Nippon Hassoden K.K.) Filed by Meiko Power Plant (Code No. 01-86) of Same Company.

R.A.P. No. 1423 (MS)

26 October 1950.

1. The Reparations Agency hereby submits to your Headquarters 2 applications for intercompany movement and authorized use of 33 pieces of reparations equipment now lying idle in the Shimizu Power Plant (Code No. 37-36), Japan Electric Generation and Transmission Co., Ltd. (Nippon Hassoden K.K.) filed by the Meiko Power Plant (Code No. 01-86) of the same company, together with applications of the Ministry of International Trade and Industry, as enclosed herewith.

Note: 6 pieces of the above 33 pieces (non-inventoried and non-evaluated) are applied by the application No. 25 KI 1953, and the rest by the application No. 25 KI 2166.

2. This application has been investigated and has been coordinated with other interested government agencies.

3. It is requested that your most favorable consideration be given to this application at the earliest practicable date.

(Y. Katsuno)
Director, Reparations Division,
Reparations Agency.

Incls:

a) ~~Application of the Ministry
of International Trade &
Industry.~~

b) Application of the subject plant.

Incl 1

LIST OF THE DESIRED REPARATION DESIGNATED
MACHINERY AND EQUIPMENTapplicant Tokai-shiten, Nippon Hassoden K.K.
(Tokai Branch, Japan Electric
Generation & Transmission Co., Ltd.)

Name of Items	Name of Mfg. Co.	Type & Dimension	Inven-tory No.	Oper-ation or Idle	No. of Items	Remarks
Knife Switch	Unknown	3ph 250V 400A	none	Idle	3	not eva-luated
Current Trans-former	Meidensha	3300V 1200/5A	none	Idle	3	not eva-luated
Total					6	

LIST OF THE DESIRED REPARATION DESIGNATED
MACHINERY AND EQUIPMENT

applicant

Tokai-shiten, Nippon Hassoden K.K.
(Tokai Branch, Japan Electric
Generation & Transmission Co., Ltd.)

Name of Items	Name of Mfg. Co.	Type & Dimension	Inventory No.	Operation or Idle	No. of Items	Remarks
Electric Machine						
Induction Motor	Hitachi Seisaku-sho	75HP 3ph 3300V	none	Idle	1	not evaluated
Induction Motor	Hitachi Seisaku-sho	15HP 3ph 220V	none	Idle	1	not evaluated
Starting Rheostat	Hitachi Seisaku-sho	15HP 76V 110A	none	Idle	1	not evaluated
Starting Magnetic Switch	Yasukawa-denki-Sisaku-sho	220V 40A	none	Idle	5	not evaluated
Total					8	
Measurement Instrument						
Vacuum Meter	Unknown	size 150m/m ϕ Degree 0~76m/m ϕ	none	Idle	8	not evaluated
Pressure Gauge	Unknown	size 4" ϕ max. degree 10kg/cm ²	none	Idle	11	not evaluated
Total					19	
Grand Total					27	

Harbour Board of Nagoya

September 7 th, 1950

To : Tokai Hokuriku Civil Affairs Region

From : Harbour Board of Nagoya

No.6 , 7 chome, Minatohonmachi, Minatoku,
Nagoya City.

Subject : Application for taking the photograph
of reparation plant.

We are intending to issue pamphlets to introduce the recent states of port Nagoya widely to the world. In these pamphlet, we want to get the photograph of panoramic view of Meiko power plant (reparation plant code No. 01--86) printed with its brief description, for which you are kindly requested to be good enough to grant your approval.

Signature :

S. Suzuki

Seichi Suzuki

Title : General manager of

Harbour Board of Nagoya.

APPROVED

E. F. Jourd
E. F. Jourd DAC
Economics Div. THCAR

Date *26 Sept. 50*

by G. Yamamoto



HITACHI LTD. NAGOYA BRANCH
7-1 Higiecho Nakamura-ku Nagoya

Nagoya 2nd Sept. 1950

Messrs Economic Section
Tokai-Hokuriku Civil Affairs Region.

Re. To get your permission of making motion pictures
of machineries in an indemnity plant.

Dear Sirs,

For overseas propaganda of steam power plants,
we wish to make motion pictures of machineries and apparatus
which we ever manufactured and supplied to the clients.

For this purpose we beg your kind and prompt perm-
ission to make pictures of steam turbine, alternater, boilers
switch gears and etc. which we supplied to and exist in the
Meiko Steam Power Station of the Nippon Hatsusoden K.K.

Hoping your kind answer, we beg to remain,

Yours faithfully,

Hitachi Ltd. Nagoya Branch

S. Ushio
Manager

APPROVED
E. F. Jonard
E. F. Jonard DAC
Economics Div. THCAR

Date *12 Aug '50*

by G. Yamashiro

U

APPLICATION FOR MOVEMENT & AUTHORIZED
USE OF DESIGNATED REPARATION
MACHINERY & EQUIPMENT

File

July 1950

To : The Ministry of International Trade and Industry

From : Eijiro Ishikawa
Managing Chief Tokai-shiten, Nippon Hassoden K.K.
(Tokai Branch, Japan Electric Generation and
Transmission Co., Ltd.)
No.10-1 Toshin-cho, Higashi-ku, Nagoya-city

1. Name (Code No.) and Location of the plant which intends to use designated reparation machinery and equipment.

Name of plant : Japan Electric Generation & Transmission Co. Ltd., Meiko Power Plant

Code No. : 01 - 86

Location : Ishu-cho, Minato-ku, Nagoya-city

2. Name (Code No. Category) and Location of the plant where designated reparation machinery and equipment to be used actual-ly exist.

Name of plant : Japan Electric Generation & Transmission Co. Ltd. Shimizu Power Plant

Code No. : 37 - 36

Category : Steam Electric Power Generation

Location : Miho-Kaijima, Shimizu-city,
Shizuoka Pref.

3. List of designated reparation machinery and equipment to be moved and used.

8 electrical machines and 19 measurement instruments, idle in the Shimizu Power Plant, Japan Electric Generation & Transmission Co., Ltd. We'd like to operate them. (Details are listed on the accompanying paper)

4. Necessity for movement and use of machinery and equipment.

The machineries, mentioned in the accompanying paper, have been stored as reserved goods in the Shimizu Power Plant ever since before they are designated as reparation. Although they had been used temporarily for salt-manufacturing purposes, they are now being stored in the stores of Shimizu Power Plant.

Since the plant has been stopped its operation on or after Dec. 1st 1949, we should like to move and utilize them in the Meiko Power Plant so as to obtain further improvements for the present electric power supply.

Signed



Ejiro Ishikawa

Managing Chief

Tokai-shiten, Nippon Hassoden K.K.
(Tokai Branch, Japan Electric
Generation & Transmission Co.Ltd.)

**LIST OF THE DESIRED REPARATION DESIGNATED
MACHINERY AND EQUIPMENT**

applicant Tokai-shiten, Nippon Hassoden K.K.
(Tokai Branch, Japan Electric
Generation & Transmission Co.,Ltd.)

Name of Items	Name of Mfg. Co.	Type & Dimension	Inven-tory No.	Oper-ation or Idle	No. of Items	Remarks
Electric Machine						
Induction Motor	Hitachi Seisaku-sho	75HP 3ph 3300V	none	Idle	1	not evaluated
Induction Motor	Hitachi Seisaku-sho	15HP 3ph 220V	none	Idle	1	not evaluated
Starting Rheostat	Hitachi Seisaku-sho	15HP 76V 110A	none	Idle	1	not evaluated
Starting Magnetic Switch	Yasukawa-denki-Sisaku-sho	220V 40A	none	Idle	5	not evaluated
Total					8	
Measurement Instrument						
Vacuum Meter	Unknown	size 150m/m ϕ Degree 0~76m/m ² ϕ	none	Idle	8	not evaluated
Pressure Gauge	Unknown	size 4" ϕ max. de- gree 10kg/cm ²	none	Idle	11	not evaluated
Total					19	
Grand Total					27	

LETTER OF ASSENT

July 1950

To : The Ministry of International Trade and Industry
From : Custodian of Shimizu Power Plant Nippon Hassoden K.K.
(Japan Electric Generation & Transmission Co., Ltd.)

Sirs:

We hereby assent to move the reparation designated machinery and equipment, List of which is attached to the application herein, belong to the Shimizu Power Plant Japan Electric Generation & Transmission Co., Ltd. (Code No. 37 - 36) to the Meiko Power Plant, Japan Electric Generation & Transmission Co., Ltd.

Signed

B Yamada

Custodian of Shimizu Power
Plant (Code No. 37 - 36)
Nippon Hassoden K.K.
(Japan Electric Generation
& Transmission Co., Ltd.)

Form I-2

INDUSTRY OFFICE
AICHI MILITARY GOVERNMENT TEAM
APC 710 (Nagoya, Honshu)

File Summary Sheet

1. Company: Nihon Hatsusoden K.K. 2. Plant: Meika
3. Address: Ichisu-cho, Minami-ku, Nagoya
4. Branch or Dispersal Plants (Cont. on Reverse):

Plant	<u>Address</u>
a.	
b.	
c.	
5. Name of President or General Mgr: Shinoda Manager
6. Permit No: 7. HQ: 8. Date:
9. Production Plant: (Cont. on Reverse):

<u>Product</u>	<u>Monthly Rate</u>
a. Salt	
b.	
c.	
d.	
e.	
f.	
10. No. of Inventoried Machines: 11. Plant No:
12. Index of File:

<u>Item</u>	<u>Date</u>
a. application for removal from the operation list	29 Oct 46
b. inspection check sheet	
c. Production and Raw materials information	25 Nov. 46
d. inspection check sheet	13 Dec 46
e. DO & application of reconversion	28 Dec '46
f. "Thermal electric Power Plant listed for reconversion"	4 Jan '47
g. the study by inspection of the Meiko Electric Power station	6 Jan '47
h. Scopin - 1489	
i. inspection check sheet	31 Jan '47
j. marking of principal units of equipment	20 Feb '47
k. of steam electric generating plants	20 Feb '47
l. inspection check sheet	20 Feb '47
m. Do	3 Mar '47
13. Remarks and Pending Action:

(ENTRIES TO BE MADE)

1u	List of measuring machine	Feb. '47
1o	List of units of equipment to be marked
1p	Inspection check sheet 12 Mar. '47
1q	Thermal electric power plants March '47
1r	Inspection check sheet 8 May '47
1s	Temporary use of reparations machinery 13 May '47
1t	Application for permission to enter reparations plant 19 May '47
1u	Inspection check sheet 13 June '47
1v	Temporary use of reparations machinery 13 May '47
1w	Application for exemption 19 June '47
1x	Report of fire 28 June '47
1y	Inspection check sheet 17 July '47
1z	" 1 Oct '47
1A	Inspection check sheet 3 May '48

Meiko Power Plant

1 st November, 1949

To : Tokai Hokuriku Civil Affairs Region
 Thru : Reparation Section, Aichi Prefecture
 From : Meiko Power Plant

1-chome, Isshu-cho, Minato-ku, Nagoya

Subject : Application for confirmation of Ex. items

Reason

Besides two coal crushers (Aux 213u and Aux.214u, each 10 HP), we need another one of the same capacity for the disposal of lump coals. For this purpose, we want to use the following equipment in this plant, for which you are kindly requested to be good enough to grant your approval

List of item of equipment in authorized Ex.

Inventory number : Aux 331 Ex
 Type of item : Coal crusher
 Operating dimensions : 10" X 7", 10 HP
 Name of maker : Sakuma Works
 Name of seller : Sakuma Works
 Date of purchase : 30 th September 1949
 Date of delivery into plant : 31 th October, 1949

Confirmed by H. Kato

Signature

Shikao Asada

Date: 2nd Nov 1949

Title

Custodian

APPROVED
 E. F. Jourd
 E. F. Jourd DAC
 Economics Div. THCAR
 Date 15 Nov. '49

Order Acceptance Sheet

To : Japan Electric Generation and Transmission Co.
Ltd. Meiko Power Plant

From : Sakuma Works

18, 2-chome, Yukiwi-cho, Showa-ku, Nagoya

Date ordered : 30 th September, 1949

Order number : Meiko 0-223

Demander and Demand No	Item	Number	Amount	Term of Delivery	Delivery place
Coal Section 124	Crasher 10 HP	1 set	43500	End of October	Meiko Plant

MEIKO POWER PLANT

Checked
File

12th November, 1948

To : Aichi Military Government Team

Thru : Reparation Section, Economic Department, Aichi Prefecture & Aichi Liaison Office, Nagoya.

From : Meiko Power Plant
1-chome, Isshu-cho, Minato-ku, Nagoya.

Subject: Additional application for the authorized Ex.

As the capacity of the vacuum pump (Aux. 103 V, 5 HP) is too small, we need another one of larger capacity. For this purpose, we want to bring the following equipment into this plant, for which you are kindly requested to be good enough to grant your approval.

Signature Shikao Asada
Shikao Asada

Title Custodian

List of item of equipment in authorized Ex.

Inventry number	::	Aux. 330 Ex.
Type of item	::	Vacuum pump
Operating dimensions:		Bore hole diameter 40 mm
		Max. quantity of air 25 m ³ /min. ✓
		Output of motor 10 HP
Name of maker	:	Torishima Mfg. Co.
Name of seller	:	Iwaya-Bussan Co.
Date of delivery into plant	:	Within One month after your approval

Confirmed
WMM

Order Acceptance Sheet

To: Japan Electric Generation and Transmission Co. Ltd.
 Meiko Power Plant

From: Swaya-Bussan Co. Ltd.
 1, 2-chome, Naze-cho. Nakamura-ku, Nagoya
 Telephone No.: Hon-kyoku ㊟ 3967

Ordered date	14th October 1948
" number	Meiko K-22

Demanded No.	Item.	Number	Amount	Term of delivery	Delivery place	Remarks
Turbine 100	Vacuum pump maker Torishima Mfg. Co. Type NV, direct coupling Bore hole diameter 40 mm Motor output 10 HP Max. vacuum 85% Max. air quantity 25 m ³ /min Shaft rotation 1750 R.P.M.	1 set	¥59,900	2 month	On rail at nearest railway station (Nagaya-Rinke) Station. Rinke Line	For Meiko Power Plant
	Total		¥59,900	✓		

注文請書

日本発送電株式会社
 名港発電所 御中

証 昭和23年10月14日
 文 第名港K-22号

名古屋市中村区泥江町一
 株式会社 岩谷物産
 電話 本局② 3967

請求元及 請求番号	品名	数量	金額	納期	受渡場所	摘要
100	(西島製作所製)NV型直結式 40耗ナツ江排気ポンプ (10馬力用)	台 1	代 59900.00	二 ヶ月	最寄駅 臨港線名古屋臨港駅	名港 発電所 送り
	最大真空度 85%					
	最大風量 25 ^{立方} 分					
	軸回転 1750回/分					
	合計		59900.00			

file

TO : Aichi Military Government Team
 THRU : Aichi Liaison Office
 FROM : Meiko Power Plant
 1, Isshu-cho, Minato-ku, Nagoya-city
 SUBJECT: Additional application for the authorized Ex. for the items (alluminum cell lightning arresters) to be brought from Nagoya Power Plant.

26th, August, 1948

We herewith submit the above mentioned application to your office by the following reason.

We want 2 sets of 70,000 volts lightning arresters to protect the electrical equipments in this power plant from lightning damages. Formerly we had two sets of alluminum cell lightning arresters, but they have been destroyed by the War. Now we wish to bring two sets of alluminum cell lightning arresters from Nagoya Power Plant, which are not used there, for the replacement of the damaged arresters.

The items are as follows:
 Inventory number. Aux. 327 Ex. & Aux. 328 Ex.
 Type of items: Alluminum cell lightning arrester
 Specification: 3-phase, 70,000 - 80,000 volts
 Name of maker: Shibaura Engineering Works
 Brought from: Nagoya Power Plant
 Numbers: 2 sets
 Remarks: The installation will be finished in one month after permission.

Approved
 [Signature]
 [Signature]

Shikao Asada

Shikao Asada
 General Manager of Meiko Power Plant
 1, Isshu-cho, Minato-ku, Nagoya-city

I certificate that the above mentioned items are to be transferred from Nagoya Power Plant to Meiko Power Plant.

Katsuzo Ono.

Katsuzo Ono
General Manager of Nagoya Power
Plant
1, Oye-cho, Minato-ku, Nagoya-city

TO : Aichi Military Government Team
THROUGH: Aichi Liaison Office
FROM : Japan Electric Generation and Transmission Co., Ltd.,
Meiko Power Plant
No.1, Isshu-cho, Minato-ku, Nagoya City
SUBJECT: Additional application for the authorized Ex. for the
vacuum pump

21th, September 1948

We herewith submit the above mentioned application to your office by the following reason.

Before starting of the horizontal type dredger pumps for ash disposal use in this plant, it is necessary to eject air in suction pipe of these pumps.

For this purpose we wish to set the following vacuum pump.

- (a) Inventory number : Aux. 329 Ex.
- (b) Type of item : Vacuum pump
- (c) Operating dimensions
 - Borehole diameter : 35 mm
 - Max. quantity of air to be ejected: 0.85 m³/min
 - Output of motor : 3HP
- (d) Name of maker
 - Vacuum pump: Torishima Mfg. Co.
 - Motor : Meidensha Co.
- (e) Name of seller: Iwaya-Bussan Co.
- (f) Date of order : 23rd August 1948

Remarks: The installation will be finished in one month after permission.

Approved
[Signature]

Shikao Asada.

SHIKAO ASADA

General Manager of Meiko Power Plant
1, Isshu-cho, Minato-ku, Nagoya-city

ORDER ACCEPTANCE SHEET

TO : Japan Electric Generation and Transmission Co., Ltd.,
Meiko Power Plant

FROM : Iwaya-Bussan Co.

Date Ordered: 23rd August 1948

Order No. : Meiko 608

Demanded From & Demand No.	Item	Number	Amount	Term of Delivery	Delivery Place
Boiler Section 508	Vacuum Pump Borehole diameter: 35 mm Max. Quantity of air to be ejected: 0.85 m ³ /min Output of motor : 3HP	1 set	¥34,000	Immedia- tely	Meiko Station

List of Items of Equipment in Authorized Ex 17015 P.P.

(a) Inventory Number	(b) Type of Item	(c) Operating dimensions serial and/or model number	(d) Name of maker	(e) Name of seller	(f) Date of purchase or other trans- action by which item was required	(g) Date of delivery into plant
Aux. 322	Portable heavy oil burner	80 Lit, 1 H.P., motor driven	Takeuchi Iron Works	Takeuchi Iron Works	4. Feb. 1948	12. Mar. 1948
Aux. 323	Heavy oil tank	20 M.T.	Takeuchi Iron Works	Takeuchi Iron Works	4. Feb. 1948	12. Mar. 1948
Aux. 324	Oil pump	Dia. 1 1/2" ^{1 1/2} 10 ^{lit} 1200 ^{lit} H.P.	Chugairo Kogyo	Chugairo Kogyo	22. Jan. 1948	4. May 1948
Aux. 325	Oil pump	Dia. 3/4" ^{1 1/2} 15 ^{lit} 400 ^{lit} H.P.	Asahi Tecl Machine Works	Asano Bussan	26. Feb. 1948	8. Mar. 1948
Aux. 326	Rice cleaner	5 H.P.	Yutaka Works	Yutaka Works	17 Feb 1948	17 Feb. 1948

~~No 454 separate items of
equipment listed at the top of
page 1 are received and approved
by Aichi Mil. Govt for authorized
use. Items of equipment other than
those listed are not authorized for use.~~

Confirmed 26 Feb 48
Aichi Mil. Govt.
RAM

R. J. M. L. S.

The 5 items of equipment listed on this
one page have been investigated and confirmed
as Ex items of equipment by Aichi Mil. Govt.

R. J. M. L. S.

HEADQUARTERS
AICHI MILITARY GOVERNMENT TEAM
APO 710 (Nagoya, Honshu)

RIM/hk

26 July 1948

SUBJECT: Confirmation of Items of Equipment in
Authorized Use

THRU: The Aichi Prefectural Liaison Office, Nagoya

TO: Nippon Hassoden K.K., Maiko Plant (OI-36)
1, 1-chome, Ishu-cho, Minami-ku, Nagoya-shi

This headquarters hereby confirms the authorized use of the
four hundred ~~items~~ ⁴⁴⁹ items of equipment on attached list.
These items of equipment are located at the Maiko Plant (OI-36).

FOR THE COMMANDING OFFICER:

449 U
S-EX

FRANK L. BOCK
Major INF
Adjutant

1 Incl:
Items of Equipment in authorized use

List of Items of Equipment in Authorized Use Meikō P.P. No. 1

(a) Inventory Number	(b) Type of Item	(c) Operating dimensions, serial and/or model	(d) Purpose for which item is being used	(e) Number and date of permit under which items of equipment is operating
S. T. 1	Steam turbine	57,440 KW	Generating electric power of public utility, the power is supplied mainly to Chūbu Haikōden Co., through whom it is distributed widely to Tokai district and furthermore the power is used in supplementing the power shortage in Kinki district.	Petitions for the postponement of the removal of this plant have been submitted from the Central Liaison Office to the 8th Army on Sept. 20, 1946, and from Aichi Prefecture Government to Aichi Military Government Team on Oct. 22, 1946, we understand: Asking Mr. Kasaiwagi of Aichi Economic Section on using the equipments of this plant for the purpose
S. T. 2	"	59,680 "		
S. T. 3	"	59,680 "		
S. T. 4	"	3,510 "		
Gen. 1	Generator	62,500 KVA		
Gen. 2	"	" "		
Gen. 3	"	4,290 "		
Gen. 4	"	62,500 "		
Gen. 5	"	4,290 "		
Gen. 6	"	" "		
Bo. 1	Boiler	112 TH		
Bo. 2	"	" "		
Bo. 3	"	" "		
Bo. 4	"	" "		
Bo. 5	"	" "		
Bo. 6	"	" "		
C. H. 1	Coal unloader	250 TH, span 17.11		
C. H. 2	Horizontal conveyor	42 M. long		
C. H. 3	Main inclined conveyor	143 M. long		
C. H. 4	Horizontal conveyor	125 M. long		
C. H. 5	Transporter	Span 82 M. long		
C. H. 6	Conveyor	100 M. long		
C. H. 7	Conveyor	100 M. long		
P. 1	Ball mill pulverizer	2 TH		
P. 2	"	" "		
P. 3	"	" "		
P. 4	"	" "		

Bo. 6	Coal unloader	250 Yd, Span 14' 11"
C.H. 1	Horizontal conveyor	48 M. Long
C.H. 2	Main inclined conveyor	143 M. Long
C.H. 3	Horizontal conveyor	175 M. Long
C.H. 4	Transporter	Span 82 M. Long
C.H. 5	Conveyor	100 M. Long
C.H. 6	Conveyor	100 M. Long
P. 1	Ball mill pulverizer	2 Yd
P. 2	"	" "
P. 3	"	" "
P. 4	"	" "
P. 5	"	" "
P. 6	"	" "
P. 7	"	" "
P. 8	"	" "
P. 9	"	" "
P. 10	"	" "
P. 11	"	" "
P. 12	"	" "
P. 13	"	" "
P. 14	"	" "
P. 15	"	" "
P. 16	"	" "
P. 17	"	" "
P. 18	"	" "
S.Y. 1	Main transformer	110 KV/12.6 KV, 63,000 KVA
S.Y. 2	"	" "
S.Y. 3	"	" "
S.Y. 4	Oil circuit breaker	110 KV, 2000 A

in Kinki district

Aichi Military Government Team on Oct. 23, 1946, we understand. Asking Mr. Kashiwagi of Aichi Economic Section on using the equipments of this plant for the purpose of generating electric power of public utility, we had the permission of him by voice on June 13, 1947.

Confirmed 26 July 48
Aichi Mil. Govt.
RJM

45

List of Items of Equipment in Authorized Use Meikē P.F. No. 2

(a) Inventory Number	(b) Type of Item	(c) Operating dimensions, serial and per model	(d) Purpose for which item is being used	(e) Number and date of permit under which item of equipment is operat- ing
S.Y. 5	Oil circuit breaker	110 KV, 800 A		
S.Y. 6	"	" "		
S.Y. 7	"	" "		
S.Y. 8	"	" "		
S.Y. 9	"	" "		
S.Y. 10	"	" "		
S.Y. 11	"	" "		
S.Y. 12	"	" "		
S.Y. 13	"	" "		
S.Y. 14	"	" "		
S.Y. 15	"	" "		
S.Y. 16	"	" "		
S.B. 1	Switch board panel	For generator		
S.B. 2	"	"		
S.B. 3	"	"		
S.B. 4	"	"		
S.B. 5	"	"		
S.B. 6	"	"		
S.B. 7	"	For transmission line		
S.B. 8	"	"	> ditto	> ditto
S.B. 9	"	"		
S.B. 10	"	For voltage regulator		
S.B. 11	"	"		
S.B. 12	"	"		
S.B. 13	"	"		
S.B. 14	"	"		

List of Items of Equipment in Authorized Use Meikō P.P. No. 3

(a) Inventory Number	(b) Type of Item	(c) Operating dimensions, serial and/or model	(d) Purpose for which item is being used	(e) Number and date of permit under which item of equipment is operating
S. B. 34 ✓	Switch board panel	For auxiliaries		
S. B. 35 ✓	"	"		
S. B. 36 ✓	"	"		
S. B. 37 ✓	"	"		
S. B. 38 ✓	"	"		
S. B. 39 ✓	"	"		
S. B. 40 ✓	"	"		
S. B. 41 ✓	"	"		
S. B. 42 ✓	"	"		
S. B. 43 ✓	"	"		
S. B. 44 ✓	"	"		
S. B. 45 ✓	"	"		
S. B. 46 ✓	"	"		
S. B. 47 ✓	"	"		
S. B. 48 ✓	"	"		
S. B. 49 ✓	"	"		
S. B. 50 ✓	"	"		
S. B. 51 ✓	"	"		
S. B. 52 ✓	"	"		
C. P. 1 ✓	Cottrell electric precipitator	180,340 M ² /H	ditto	ditto
C. P. 2 ✓	"	"		
C. P. 3 ✓	"	"		
C. P. 4 ✓	"	"		
C. P. 5 ✓	"	"		
C. P. 6 ✓	"	"		
R. M. 1	Lathe	12' 9.5 H.P.		
R. M. 2	"	8' 3 "		

List of Items of Equipment in Authorized Use *Melko P.P. No. 4*

(a) Inventory Number	(b) Type of Item	(c) Operating dimensions Serial and / or model	(d) Purpose for which item is being used	(e) Number and date of permit under which item of equipment is operating
R.M. 21	Surface plates	4' x 5'	Machines being used for maintenance need not be and will not be classified as authorized use. RPM WJW	
R.M. 22	"	3' x 4'		
R.M. 23	"	16" x 16"		
R.M. 24	"	"		
R.M. 25	"	5' x 7'		
R.M. 26	"	6' x 6'		
R.M. 27	Electric welder			
R.M. 28	"			
R.M. 29	"			
R.M. 30	Hand press	1/2 tons		
A 1	Chemical balance	0.1 mg ~ 200 gr		
A 2	"	"		
A 3	"	"		
A 4	Bomb calorimeter	"		
A 5	Electrical distillater	4 KW		
A 6	Electric furnace	2 "		
A 7	"	" "		
A 8	"	1 "		
A 9	Electric dryer	2 "		
A 10	"	" "		
A 11	Sample coal crusher	1 H.P.	ditto	ditto
A 12	Panel	220 V 4 110 V		
A 13	Electric dryer	4 KW		
Aux. 1	Feed water pump	1,025 H.P.		
Aux. 2	"	"		
Aux. 3	"	"		

A	5	✓	Electrical distillater	4 KW
A	6	✓	Electric furnace	2 "
A	7	✓	"	" "
A	8	✓	"	1 "
A	9	✓	Electric dryer	2 "
A	10	✓	"	" "
A	11	✓	Sample coal crusher	1 H.P.
A	12	✓	Panel	220 V 4 110 V
A	13	✓	Electric dryer	4 KW
Aux.	1	✓	Feed water pump	1,025 H.P.
Aux.	2	✓	"	"
Aux.	3	✓	"	"
Aux.	4	✓	"	"
Aux.	5	✓	"	"
Aux.	6	✓	"	"
Aux.	7	✓	Condenser circulating water pump	600 H.P.
Aux.	8	✓	"	"
Aux.	9	✓	"	580 "
Aux.	10	✓	"	"
Aux.	11	✓	"	"
Aux.	12	✓	"	"
Aux.	13	✓	Induced draft fan	450 H.P.
Aux.	14	✓	"	"
Aux.	15	✓	"	"
Aux.	16	✓	"	"
Aux.	17	✓	"	"
Aux.	18	✓	"	"
Aux.	19	✓	"	"
Aux.	20	✓	"	"
Aux.	21	✓	"	"
Aux.	22	✓	"	"

ditto

ditto

Confirmed by
Aichi Mil. Govt.
RMM
Talyap

35.

List of Items of Equipment in Authorized Use Meiko P.P. No. 5

(a) Inventory Number	(b) Type of Item	(c) Operating dimensions serial and/or model	(d) Purpose for which item is being used	(e) Number and date of permit under which item of equipment is operating.
Aux. 23 ✓	Induced draft fan	450 H.P.		
Aux. 24 ✓	"	" "		
Aux. 25 ✓	Forced draft fan	200 H.P.		
Aux. 26 ✓	"	" "		
Aux. 27 ✓	"	" "		
Aux. 28 ✓	"	" "		
Aux. 29 ✓	"	" "		
Aux. 30 ✓	"	" "		
Aux. 31 ✓	"	" "		
Aux. 32 ✓	"	" "		
Aux. 33 ✓	"	" "		
Aux. 34 ✓	"	" "		
Aux. 35 ✓	"	" "		
Aux. 36 ✓	"	" "		
Aux. 37 ✓	Ball mill pulverizer	200 H.P.		
Aux. 38 ✓	"	" "		
Aux. 39 ✓	"	" "		
Aux. 40 ✓	"	" "		
Aux. 41 ✓	"	" "	ditto	ditto
Aux. 42 ✓	"	" "		
Aux. 43 ✓	"	" "		
Aux. 44 ✓	"	" "		
Aux. 45 ✓	"	" "		
Aux. 46 ✓	"	" "		
Aux. 47 ✓	"	" "		
Aux. 48 ✓	"	" "		
Aux. 49 ✓	"	" "		
Aux. 50 ✓	"	" "		

Aux. 38	"	"	"
Aux. 39	"	"	"
Aux. 40	"	"	"
Aux. 41	"	"	"
Aux. 42	"	"	"
Aux. 43	"	"	"
Aux. 44	"	"	"
Aux. 45	"	"	"
Aux. 46	"	"	"
Aux. 47	"	"	"
Aux. 48	"	"	"
Aux. 49	"	"	"
Aux. 50	"	"	"
Aux. 51	"	"	"
Aux. 52	"	"	"
Aux. 53	"	"	"
Aux. 54	"	"	"
Aux. 55	Condensate pump	150	H.P.
Aux. 56	"	"	"
Aux. 57	"	140	"
Aux. 58	"	"	"
Aux. 59	"	"	"
Aux. 60	"	"	"
Aux. 61	Ball mill exhauster	100	H.P.
Aux. 62	"	"	"
Aux. 63	"	"	"
Aux. 64	"	"	"
Aux. 65	"	"	"
Aux. 66	"	"	"
Aux. 67	"	"	"

> ditto > ditto

Confirmed by
Aichi Mil. Govt.
RJM

45

List of Items of Equipment in Authorized Use Mexko P.P. No. 6

(a) Inventory Number	(b) Type of Item	(c) Operating dimensions, serial and/or model	(d) Purpose for which Item is being used	(e) Number and date of permit under which item of equipment is operating
Aux. 68 ✓	Ball mill exhauster	100 H.P.		
Aux. 69 ✓	"	" "		
Aux. 70 ✓	"	" "		
Aux. 71 ✓	"	" "		
Aux. 72 ✓	"	" "		
Aux. 73 ✓	"	" "		
Aux. 74 ✓	"	" "		
Aux. 75 ✓	"	" "		
Aux. 76 ✓	"	" "		
Aux. 77 ✓	"	" "		
Aux. 78 ✓	"	" "		
Aux. 79 ✓	House transformer	20.5 KV/3.45 ^{KVA} 5,000 ^{KVA}		
Aux. 80 ✓	"	" "		
Aux. 81 ✓	Circulating and condensate pump	90 H.P.		
Aux. 82 ✓	Generator cooling fan	120 H.P.		
Aux. 83 ✓	"	" "		
Aux. 84 ✓	"	" "		
Aux. 85 ✓	"	" "		
Aux. 86 ✓	"	200 H.P.		
Aux. 87 ✓	Food water heater		> ditto	> ditto
Aux. 88 ✓	"			
Aux. 89 ✓	"			
Aux. 90 ✓	Evaporator	11 1/4"		
Aux. 91 ✓	"	" "		
Aux. 92 ✓	"	" "		
Aux. 93 ✓	Auxiliary oil pump	30 H.P.		
Aux. 94 ✓	"	" "		

Aux 82	Generator cooling fan	120	H.P.		
Aux. 83	"	"	"		
Aux. 84	"	"	"		
Aux. 85	"	"	"		
Aux. 76	"	200	H.P.		
Aux 87	Food water heater			> ditto	> ditto
Aux. 88	"				
Aux. 89	"				
Aux. 90	Evaporator	11	1/4"		
Aux. 91	"	"	"		
Aux. 92	"	"	"		
Aux. 93	Auxiliary oil pump	30	H.P.		
Aux. 94	"	"	"		
Aux. 95	"	15	"		
Aux. 96	Cooling water pump	40	"		
Aux. 97	Drain pump	35	"		
Aux. 98	"	"	"		
Aux. 99	"	45	"		
Aux 100	Evaporator feed pump	8.5	"		
Aux. 101	"	"	"		
Aux. 102	"	7.5	"		
Aux. 103	Vacuum pump	5	"		
Aux. 104	Raw water feed pump	3	"		
Aux. 105	"	"	"		
Aux. 106	Centrifugal type oil purifier	"	"		
Aux. 107	"	"	"		
Aux. 108	"	"	"		
Aux. 109	Surge tank	45	11.T.		
Aux. 110	"	"	"		
Aux. 111	"	"	"		
Aux. 112	"	"	"		

Confirmed by
Aichi Mil. Govt.
RAM

45

List of Items of Equipment in Authorized Use Make P.P. No. 7

(a) Inventory Number	(b) Type of Item	(c) Operating dimensions, serial and for model	(d) Purpose for which item is being used	(e) Number and date of permit under which item equip- ment is operating
Aux. 113 ✓	Surge tank	45 M.T.		
Aux. 114 ✓	"	"		
Aux. 115 ✓	Raw water tank	30 M.T.		
Aux. 116 ✓	"	" "		
Aux. 117 ✓	Turbine oil tank	10 "		
Aux. 118 ✓	Coal hauler	" "		
Aux. 119 ✓	Over head crane	100 T & 20 T		
Aux. 120 ✓	Portable oil purifier	5 H.P.		
Aux. 121 ✓	Turbine meter panel			
Aux. 122 ✓	"			
Aux. 123 ✓	"			
Aux. 124 ✓	"			
Aux. 125 ✓	Boiler control board			
Aux. 126 ✓	"			
Aux. 127 ✓	"			
Aux. 128 ✓	"			
Aux. 129 ✓	"			
Aux. 130 ✓	"			
Aux. 131 ✓	Automatic coal weigher	8 T, 2 H.P.		
Aux. 132 ✓	"	" "	ditto	ditto
Aux. 133 ✓	"	" "		
Aux. 134 ✓	"	" "		
Aux. 135 ✓	"	" "		
Aux. 136 ✓	"	" "		
Aux. 137 ✓	"	" "		
Aux. 138 ✓	"	" "		
Aux. 139 ✓	"	" "		

Aux. 126	"		
Aux. 127	"		
Aux. 128	"		
Aux. 129	"		
Aux. 130	"		
Aux. 131	Automatic coal weigher	8 1/2 H.P.	
Aux. 132	"	"	
Aux. 133	"	"	
Aux. 134	"	"	
Aux. 135	"	"	
Aux. 136	"	"	
Aux. 137	"	"	
Aux. 138	"	"	
Aux. 139	"	"	
Aux. 140	"	"	
Aux. 141	"	"	
Aux. 142	"	"	
Aux. 143	"	"	
Aux. 144	"	"	
Aux. 145	"	"	
Aux. 146	"	"	
Aux. 147	"	"	
Aux. 148	"	"	
Aux. 149	Coal feeder	8 1/2 H.P.	
Aux. 150	"	"	
Aux. 151	"	"	
Aux. 152	"	"	
Aux. 153	"	"	
Aux. 154	"	"	
Aux. 155	"	"	
Aux. 156	"	"	
Aux. 157	"	"	

} ditto } ditto

Confirmed & signed
 Nishi Mil. Govt.
 RMM

45

List of Items of Equipment in Authorized Use Meiko P.P. No. 8

(a) Inventory Number	(b) Type of Item	(c) Operating dimensions serial and for model	(d) Purpose for which item is being used	(e) Number and date of permit under which item of equipment is operating
Aux. 158 ✓	Coal feeder	8 In 3 H.P.		
Aux. 159 ✓	"	"		
Aux. 160 ✓	"	"		
Aux. 161 ✓	"	"		
Aux. 162 ✓	"	"		
Aux. 163 ✓	"	"		
Aux. 164 ✓	"	"		
Aux. 165 ✓	"	"		
Aux. 166 ✓	"	"		
Aux. 167 ✓	Meter generator	" 10. KW		
Aux. 168 ✓	"	"		
Aux. 169 ✓	"	"		
Aux. 170 ✓	"	"		
Aux. 171 ✓	"	"		
Aux. 172 ✓	"	"		
Aux. 173 ✓	"	"		
Aux. 174 ✓	Vertical type dredger pump	35 H.P.		
Aux. 175 ✓	"	"		
Aux. 176 ✓	"	"		
Aux. 177 ✓	"	"		
Aux. 178 ✓	"	"	ditto	ditto
Aux. 179 ✓	"	"		
Aux. 180 ✓	Horizontal type dredger pump	60 KW		
Aux. 181 ✓	"	"		
Aux. 182 ✓	"	"		
Aux. 183 ✓	Jet pump	50 H.P.		
Aux. 184 ✓	"	"		

Aux. 171	"	"	"	"		
Aux. 172	"	"	"	"		
Aux. 173	"	"	"	"		
Aux. 174	Vertical type dredger pump	35	H.P.			
Aux. 175	"	"	"			
Aux. 176	"	"	"			
Aux. 177	"	"	"		ditto	ditto
Aux. 178	"	"	"			
Aux. 179	"	"	"			
Aux. 180	Horizontal type dredger pump	60	K.T.T.			
Aux. 181	"	"	"			
Aux. 182	"	"	"			
Aux. 183	Jet pump	50	H.P.			
Aux. 184	"	"	"			
Aux. 185	"	"	"			
Aux. 186	"	"	"			
Aux. 187	"	"	"			
Aux. 188	"	"	"			
Aux. 189	Cleaner pump	50	"			
Aux. 190	"	"	"			
Aux. 191	Surge pump	30	"			
Aux. 192	"	"	"			
Aux. 193	Head pump	40	"			
Aux. 194	"	"	"			
Aux. 195	"	30	K.T.T.			
Aux. 196	Pressure test pump	7.5	H.P.			
Aux. 197	motor winch	15	"			
Aux. 198	Portable gas producer					
Aux. 199	Air compressor	75	H.P.			
Aux. 200	"	"	"			
Aux. 201	Ash crusher	10	"			
Aux. 202	"	"	"			

45.

Confirmed 26 July 48
 Aichi Mil. Govt.
 RM

List of Items of Equipment in Authorized Use Meike P.P. No. 9

(a) Inventory Number	(b) Type of Item	(c) Operating dimensions serial and for model	(d) Purpose for which item is being used	(e) Number and date of permit under which item of equipment is operating
Aux. 203 ✓	Ash crusher	10 H.P.		
Aux. 204 ✓	"	" "		
Aux. 205 ✓	"	" "		
Aux. 206 ✓	"	" "		
Aux. 207 ✓	Head tank	25 M.T		
Aux. 208 ✓	"	" "		
Aux. 209 ✓	"	" "		
Aux. 210 ✓	"	" "		
Aux. 211 ✓	Water softener			
Aux. 212 ✓	Elevator	3.5 T		
Aux. 213 ✓	Coal crusher	10 H.P.		
Aux. 214 ✓	"	" "		
Aux. 215 ✓	Potential transformer	77000 ^v /110 ^v /110 ^v √3		
Aux. 216 ✓	"	"		
Aux. 217 ✓	"	"		
Aux. 218 ✓	"	77000 ^v /110 ^v		
Aux. 219 ✓	"	"		
Aux. 220 ✓	Metering outfit	77000 ^v /110 ^v , 800 ^a /5A		
Aux. 221 ✓	"	" "	ditto	ditto
Aux. 222 ✓	"	" "		
Aux. 223 ✓	"	" "		
Aux. 224 ✓	"	" "		
Aux. 225 ✓	"	" "		
Aux. 226 ✓	"	" "		
Aux. 227 ✓	Metal clad switch gear	For auxiliaries		

Aux. 216	"	"
Aux. 217	"	"
Aux. 218	"	77000 ^v /110 ^v
Aux. 219	"	"
Aux. 220	Metering out fit	77000 ^v /110 ^v , 800 ^v /5A
Aux. 221	"	"
Aux. 222	"	"
Aux. 223	"	"
Aux. 224	"	"
Aux. 225	"	"
Aux. 226	"	"
Aux. 227	Metal clad switch gear	For auxiliaries
Aux. 228	"	"
Aux. 229	"	"
Aux. 230	"	"
Aux. 231	"	"
Aux. 232	"	"
Aux. 233	"	"
Aux. 234	"	"
Aux. 235	"	"
Aux. 236	"	"
Aux. 237	"	"
Aux. 238	"	"
Aux. 239	"	"
Aux. 240	"	"
Aux. 241	"	"
Aux. 242	"	"
Aux. 243	"	"
Aux. 244	"	"
Aux. 245	"	"
Aux. 246	"	"
Aux. 247	"	"

ditto ditto

Conf. in view of
Aichi Mil. Govt.
RHM
26 July 48

45.

List of Items of Equipment in Authorized Use Meike P.P. No. 10

(a) Inventory Number	(b) Type of Item	(c) Operating dimensions, serial and for model	(d) Purpose for which item is being used	Number and date of permit under which item of equipment is operating
Aux. 248 ✓	Metal clad switch gear		For auxiliaries	
Aux. 249 ✓	"		"	
Aux. 250 ✓	"		"	
Aux. 251 ✓	"		"	
Aux. 252 ✓	"		"	
Aux. 253 ✓	"		"	
Aux. 254 ✓	"		"	
Aux. 255 ✓	"		"	
Aux. 256 ✓	"		"	
Aux. 257 ✓	"		"	
Aux. 258 ✓	"		"	
Aux. 259 ✓	"		"	
Aux. 260 ✓	"		"	
Aux. 261 ✓	"		"	
Aux. 262 ✓	"		"	
Aux. 263 ✓	"		"	
Aux. 264 ✓	"		"	
Aux. 265 ✓	Master clock			
Aux. 266 ✓	Transformer	3450/210, 105, 400 KVA		
Aux. 267 ✓	"	"		
Aux. 268 ✓	"	"		
Aux. 269 ✓	"	"		
Aux. 270 ✓	"	"		
Aux. 271 ✓	Spare exciter	450 H.P.		
Aux. 272 ✓	Mercury arc rectifier	12.75 KW		
Aux. 273 ✓	"	3.4 "		
Aux. 274 ✓	"	" "		
Aux. 275 ✓	Storage batteries	548 AH		

ditto

ditto

Aux. 262	"	"
Aux. 263	"	"
Aux. 264	"	"
Aux. 265	Master clock	"
Aux. 266	Transformer	3,450 ^V /210 ^V , 105 ^V , 400 KVA
Aux. 267	"	"
Aux. 268	"	"
Aux. 269	"	"
Aux. 270	"	" 75 ^{KVA} x 3
Aux. 271	Spare exciter	450 H.P.
Aux. 272	Mercury arc rectifier	12.75 KW
Aux. 273	"	3.4 "
Aux. 274	"	" "
Aux. 275	Storage batteries	508 A.H. 130 V
Aux. 276	"	" "
Aux. 277	"	108 A.H. 24 V
Aux. 278	Motor-generator	20 H.P.
Aux. 279	CO ₂ extinguisher	"
Aux. 280	Insulation oil tank	20 M.T.
Aux. 281	"	" "
Aux. 282	Oil pump	5 H.P.
Aux. 283	"	" "
Aux. 284	Insulation oil purifier	7.5 "
Aux. 285	"	5 "
Aux. 286	Air compressor	1 "
Aux. 287	Oil tester	"
Aux. 288	Transformer	3,450 ^V /400 ^V , 500 ^V KVA x 3
Aux. 289	Switch board	For coal handling
Aux. 290	"	"
Aux. 291	"	"
Aux. 292	"	"

ditto

ditto

Confirmed
 U.S. Mil. Govt.
 2/2/48

45

List of Items of Equipment in Authorized Use Meikō P.P. No. 11

(a) Inventory number	(b) Type of Item	(c) Operating dimensions serial and/or model	(d) Purpose for which item is being used	(e) Number and date of permit under which item of equipment is operating
VX. 293 ✓	Switch board		For coal handling	
VX. 294 ✓	Pole transformer	20 KVA		
VX. 295 ✓	"	" "		
VX. 296 ✓	"	20 KVA X 2		
VX. 297 ✓	"	10 KVA		
VX. 298 ✓	"	" "		
VX. 299 ✓	"	" "		
VX. 300 ✓	"	10 KVA X 2		
VX. 301 ✓	"	7.5 KVA		
VX. 302 ✓	"	15 KVA X 2		
AUX. 303 ✓	Motor siren	5 H.P.		
AUX. 304 ✓	Rotary water screen	15 "		
AUX. 305 ✓	Steam receiver			
AUX. 306 ✓	"			
AUX. 307 ✓	"			
AUX. 308 ✓	Oil cooler			
AUX. 309 ✓	"			
AUX. 310 ✓	"			
AUX. 311 ✓	"		ditto	ditto
AUX. 312 ✓	motor	12 KW		
AUX. 313 ✓	"	200 "		
AUX. 314 ✓	"	100 "		
AUX. 315 ✓	"	100 "		
AUX. 316 ✓	Hot air dryer			
AUX. 317 ✓	Motor	5 H.P.		
AUX. 318 ✓	"	4 "		
AUX. 319 ✓	Mill	10 "		
AUX. 320 ✓	Air compressor	16.4 m ³ /hr, 7 kg/cm ²	H.P. motor driven	
AUX. 321 ✓				

AUX. 300	Oil cooler		
AUX. 309	"		
AUX. 310	"		
AUX. 311	"		
AUX. 312	Motor	12 KW	
AUX. 313	"	200 "	
AUX. 314	"	100 "	
AUX. 315	"	100 "	
AUX. 316	Hot air dryer		
AUX. 317	Motor	5 H.P.	
AUX. 318	"	4 "	
AUX. 319	Mill	10 "	
AUX. 320	Air compressor	16.4 $\frac{m^3}{hr}$, 7 $\frac{kg}{cm^2}$	H.P. motor driven
AUX. 321	Telephone apparatus		

> ditto

> ditto

The 449 separate items of equipment listed on these 11 pages have been reviewed and confirmed by Aichi Mil. Govt for authorized use. Items of equipment other than those listed are not authorized for use.

R. L. M. Lt Col

Aichi Mil. Govt.
RTM
26 Feb 48

Aux. 322

Order Acceptance Sheet

From: Takeuchi Iron Works, Nagoya Factory.

1, 3-chōme, Kanafune-chō, Minato-ku, Nagoya-city.

To: Meikō Power Plant. 01-86

1-chōme, Isshu-chō, Minatoku, Nagoya-city.

Date of Order: February 4, 1948

No. of Order: Meikō 647

Required from & required no.	Item	Number	Unit price	Amount	Delivery date	Delivery place	Remarks
Boiler Section 639	Heavy Oil Carrying Car Including one oil pressure tank and one heavy oil tank.	1 set		¥31,964.50	20 days after date of order	Meikō P.P.	1/3 cash with order.
TOTAL				¥31,964.50			

Aux. 323

Order Acceptance Sheet

From: Takeuchi Iron Works, Nagoya Factory.

1, 3-chōme, Kanafune-chō, Minato-ku, Nagoya-city.

○ To: Meikō Power Plant.

1-chōme, Isshu-chō, Minatoku, Nagoya-city.

Date of Order: February 4, 1948

No. of Order: Meikō 646

Required from & required no.	Item	Number	Unit price	Amount	Delivery date	Delivery place	Remarks
Boiler Section 638	Heavy Oil Tank capacity, 20 ton.	1 set		¥95,000	Immediately	Meikō P.P.	
TOTAL				¥95,000			

Aux. 324

Order Acceptance Sheet

From : Chūgairokōgyō Co., Ltd.

33, 1-chōme, Kyomachihoriage-dori, Nishi-ku, Osaka-city.
(5th floor of Kyomachibori Building)

To : Meikō Power Plant

1-chōme, Isshu-chō, Minato-ku, Nagoya-city.

Date of Order ... January 22, 1948

No. of Order ... Meikō 594

Required from & required no.	Item	Number	Unit price	Amount	Delivery date	Delivery place	Remarks
Boiler Section 582	Diamond CHP ~ 1" 1/2 type Cam Oil Pump specification Capacity : 1200 1/h Max Pressure : 10 kg/cm ² Bore hole dia. : 1" No. of revolution : 650 r.p.m.	1		¥25,000	Immediately	Warehouse of Meikō P.P.	
Total				¥25,000			

Aux. 325 Order Acceptance Sheet

From: Asano Bussan Co, Ltd. Nāgoya Branch
 5, 3-chōme, Sakae-machi, Nāka-ku, Nāgoya-city

To: Meikō Power Plant
 1-chōme, Isshu-chō, Minato-ku, Nāgoya-city

Date of Order --- February 26, 1948

No. of Order --- Meikō 735

Required from & required No.	Item	Number	Unitprice	Amount	Delivery date	Delivery place	Remarks
Boiler Section 729	Gear pump Borehole dia. 1/2" Capacity 8 1/2 min. Pressure 8 kg/cm ² No. of revol. 800 r.p.m. Including pulley and V belt.	1 Set		¥ 6.500	Immediately	At Osaka	Cash with Order
Total				¥ 6.500			

Aug. 326

From: Ichirō Hataji

Yutaka Works

176, 1-chōme, Masaki-chō, Naka-ku, Nagoya-city.

To: Japan Electric Generation & Transmission Co., Ltd.

Feb. 17, 1948

Reception

I received ¥4,700, for the price of one circulating type rice cleaner, capacity 7.94 gallon.

Ichiro Hataji
Yutaka Works.

Nippon Hassoden

AICHI PREFECTURAL OFFICE
POLICE DEPT
PUBLIC SAFETY SECTION

June 28, 1947.

TO : Commander of Aichi Mil. Govt Team.
FROM : Police Commissioner, Aichi Pref.
SUBJECT: An early discovery of fire broke out at a
reparation factory.

It is hereby reported to you on the above subject as follows:

Note:-

1. Date and time: Around 10:50 p.m., June 20.
2. Place: At the resting-room of the substation of the salt-manufactory of Meiko generating-station, Nippon Hassoden Co., Ltd.
3. State of the fire:

Masamitsu Nozaki, 34 and Yukio Yamamoto, 18, the electric workers of the above generating-station were both on duty on the night at the salt-manufactory. At around 10:00 p.m. they went to bed at the resting-room setting a mosquito incense near them. The fatigue-blouse of Nozaki fell on the mosquito incense by chance and caught fire.

In the meantime, it spread to a mattress filling up the room with smoke and stench and yet they were fast asleep without noticing the fire was about to gain headway.

At the right time, Norio Morimoto 33, a policeman on the beat of Minato Police Station found the fire and woke them up. The fire was entirely extinguished by them at 11:00 p.m.

4. Damage:

One fatigue-blouse of Nozaki, a mattress and a pillow of the factory were half-burnt. The estimated damage was about ¥1,000. Nothing is wrong with the reparation machines.

For SHIGEJI ARAI,
Police Commissioner,
Aichi Pref.

Yasutaka Kaihara,
Chief of Public Safety Sect.

HEADQUARTERS
AICHI MILITARY GOVERNMENT TEAM
APO 710 U. S. ARMY

EFJ/ek

19 June 1947

SUBJECT: Application for Exemption from Reparations

TO : Commanding Officer, Tokai-Hokuriku
Military Government Region, APO 710
ATTN: Reg, Com & Ind Section

1. Transmitted herewith in quintuplicate is an application from the 00-5 (01-00) Thermal Electric Power Plant Nippon Hassoden K.K., Maiko plant for exemption from reparations.

2. This thermal electric plant maintains that the hydroelectric generating plants in this area are unable to supply adequate power for minimum industrial needs and that removal of this plant will therefore seriously impair economic recovery in this region. The statistics in this application have been carefully checked by this office with reports from prefectural officials and appear to be accurate.

3. Inasmuch as there are no criteria for thermal electric plants this headquarters forwards this application without recommendation.

FOR THE COMMANDING OFFICER:

Incl: 1
1 Application
(5 copies)

ROBERT W. HUTCHINSON
Capt CMP
Adjutant

Nippon Hassoden Co., Ltd., Tokai Branch

Chubu Electric Supply Co., Ltd.

May 28th 1947, Nagoya.

To:- Commanding Officer of Aichi Military Government Team
Through:- Tokai Hokuriku Liaison Office
Subject:- Petition for the elimination of the Meiko Steam Electric Station, Nagoya from Reparations List.

This petition is for removal of the Meiko Steam Electric Station of Nippon Hassoden Co., Ltd. from the reparation list.

The above power station is one of the most efficient in Japan and indispensable as a supplement power supply in dry season and it is our earnest desire that you will pay special consideration to removing the same from the reparation list for the following reasons.

Reasons:-

A. Shortage of Electricity in Dry Season:

(1) Last February, the worst month of last dry season, the highest demand of electric power reached 420,000 K.W. stopping supply for special electric power (salt-making, electric boiler) and limiting the same just for maintenance of peace industry and for guaranty of public peace. This figure 420,000 K.W. means output at the power station 480,000 K.W. maximum and 9,000,000 K.W.H. per day.

Against the above we could manage to supply only 350,000 K.W. maximum and 6,250,000 K.W.H. per day of hydroelectricity this year, though we had rather more satisfactory stream water condition than normal year. It was the maximum electric generating capacity of our hydromatic power stations. This means shortage of electricity of 130,000 K.W. maximum and 2,750,000 K.W.H. per day. As a matter of fact, it was the result of shortage of thermal power generation owing to insufficiency of coal, but it caused, in Tokai four prefectures, more than 50% restriction of electric supply for industrial demands and stop of supply, in peak hours, to many separated sections in turn even for lighting, which is indispensable for the public peace.

-:2:-

In spite of these controls, the frequencies dropped so often to 52 cycles at the worst case. It tells evidently the serious confusions into which the industries of Tokai district were thrown.

- (2) Tokai district, as it is known, belongs to the 60 cycle network in the center part of Honshu, and it is coupled to Kinki and Hokuriku districts through the same transmitting network. At the crisis in last February which was common to these three districts, this transmitting network operated adequately to complement the shortage by all thermal power, and yet the shortage of 500,000 K.W. maximum and 10,000,000 K.W.H. per day was recorded. (Refer List No.1 Power Balance Table, attached)

Insufficient coal supply choked the thermal power generations, and even the total amount of generation at all steam power stations in Kansai 60 cycle districts did not exceed 130,000 K.W. maximum and 1,700,000 K.W.H. per day in last dry season. It is required, therefore, 630,000 K.W. maximum and 11,700,000 K.W.H. per day, i.e. above mentioned shortage plus actual supplied amount.

In order to meet all Kansai 60 cycle district's demands completely, keeping this output constant, steam power stations in Tokai district should be charged as their shares at least 25% of the required amount. We consider it should be shared minimum 150,000-160,000 K.W. in accordance with many records in the past.

- (3) In the coming dry season, about 50,000 K.W. more are estimated as the increased load to steam power stations in Tokai district. The estimated amount is 6% increase owing to the industrial recovery and decrease of transmission from Kanto district.

B. High Efficient Generating Plant in Coal Crisis:

As it is said, we have never had such a poor coal supply as in last dry season, and yet we cannot expect much more improvement in the coming season. The Economic Stabilization Board, as a matter of course, will take necessary steps to fulfill the plan of increasing of coal production, but it is supposed very difficult to get coal with enough quantity and suitable quality, which will produce supplement thermal power in the coming dry season. To produce the same amount of electricity with less coal consumption, the best and the only way left is to utilize fully high efficient steam power stations. It is believed that the Meiko Steam Electric Station, Nagoya, is one of the best of these power stations, and its latest figures of coal consumption (Kg/K.W.H.) are as follows which shows evidently its superiority.

- :3: -

	<u>Sept. 1946</u>	<u>Feb. 1947</u>
Meiko Power Station	0.72	0.92
Mean of power stations in Kinki district	0.98	1.16

In September of 1946, the mean quality of supplied coal was 5,300-5,400 calories, but it deteriorated to 5,200 calories in February 1947. At any rate, it is evident that Meiko Steam Electric Station economizes more than 20% of coal than the similar plants in Kansai district, and it is the reason why the Meiko Steam Electric Station should be operated preferable to the others.

C. Geographical Advantage in Relation to Three Coal Production Centers:

Most part of Japanese steam electric stations are located in the Kyushu-coal's territory and are fed by them. But the poor supply of Kyushu-coal in last dry season, distressed these power stations seriously. As Tokai district is in the middle of Japan, Meiko Steam Electric Station is quite favoured to use any available coal from 3 coal mines of Kyushu, Hokkaido and Joban. Superior Hokkaido coal mixed with 20-30% of Joban coal can produce equivalent calories to Kyushu coal, and Meiko Steam Electric Station has more chances to get any coal than other stations. The generation by this economical power station with Hokkaido and Joban coals, saves fair amount of Kyushu coal which will accelerate 60 cycle network generations at Kinki district.

Under these circumstances it is quite necessary, not only for Tokai district but Kansai and Chugoku, viz. for all western 60 cycle districts, Meiko Steam Power Station should be remained. More over we have attached herewith two lists stating outline of Meiko Power Station and that of main units of equipment for your further reference.

Hoping you will give your special attention for the above petition.

Yours very truly,

C. Ashikawa

.....
 Manager
 NIPPON HASSODEN CO., LTD., NAGOYA BRANCH.

H. Ojima

.....
 President
 CHUBU ELECTRIC SUPPLY CO., LTD.

POWER BALANCE TABLE IN FEBRUARY

68

		Total Demand (a)	Hydro-power from Haiden and Other Co
K. W. H. per day Unit 1,000 KWH.	Actual Consumption under Restriction (A)	25,750	3,750
	Forecast without Restriction (B)	35,750	3,750
	Restricted Amount (B) - (A)	10,000	
Maximum K. W. Unit 1,000 KW.	Actual Consumption under Restriction (C)	1,350	170
	Forecast without Restriction (D)	1,850	170
	Restricted Amount (D) - (C)	500	

* Mean hydro-power out-put of last 10 years re

BALANCE TABLE IN FEBRUARY 1947 FOR KANSAI 60 CYCLE DISTRICT.

Hydro-power from Haiden and Other Co.,	Hassoden's Supply (c) = (a) - (b) = (d) + (e) + (f) + (g) + (h)	Hydro-power * (d)
3,750	22,000	17,300
3,750	32,000	17,300
170	1,180	890
170	1,680	890

Output of last 10 years records 15,800,000 KWH. per day

ICT.

(h)	Hydro-power * (d)	Thermal-power (e)	Transferred power from Other Company (f)	Transferred from Chugok (g)
	17,300	1,700	90	210
	17,300	11,700	90	210
	890	130	5	15
	890	630	5	15

List No. 1

Transferred power from Other Company (f)	Transferred Power from Chugoku. (g)	Transferred power from Kanto. (h)
90	210	2,700
90	210	2,700
5	15	140
5	15	140

List No.2OUTLINE OF MEIKO STEAM ELECTRIC STATION

A. Name of Company:

Nippon Hassoden Co., Ltd.

B. Name of Factory:

Meiko Steam Electric Station.

C. Location of Company and Factory:

a) Company: No.37, 2-chome, Motomachi,
Hongo-ku, Tokyo.b) Factory: No.1, Isshucho, Minato-ku,
Nagoya.

D. Origination of Company and Factory.

a) Company: Established on April 1st, 1939.

b) Factory: Licenced on January 24th, 1939.

E. History of Factory:

July 15th, 1936.

Established as Chubu Kyodo Karyoku
Hatsuden Co., Ltd.

Nov. 1939.

Nippon Hassoden Co., Ltd. took over
Chubu Kyodo Karyoku Hatsuden Co., Ltd.

OUTLINE OF MAIN UNITS OF EQUIPMENT
AT MEIKO STEAM ELECTRIC STATION

1. Steam Turbines:

<u>Identifying Mark</u>	<u>Description of Equipment</u>
S.T.1	57,440 KW M 1938
S.T.2	59,680 " M 1939
S.T.3	59,680 " M 1939
S.T.4	3,510 " M 1938

2. Generators:

<u>Identifying Mark</u>	<u>Description of Equipment</u>
Gen.1	62,500 KVA M 1938
Gen.2	62,500 KVA M 1938
Gen.3	4,290 " M 1939
Gen.4	62,500 " M 1939
Gen.5	4,290 " M 1939
Gen.6	4,290 " M 1938

3. Boilers:

<u>Identifying Mark</u>	<u>Description of Equipment</u>
Bo.1	112 MT/Hr. M 1938
Bo.2	112 MT/Hr. M 1938
Bo.3	112 MT/Hr. M 1938
Bo.4	112 MT/Hr. M 1939
Bo.5	112 MT/Hr. M 1939
Bo.6	112 MT/Hr. M 1939

4. Coal Handling Equipment:

<u>Identifying Mark</u>	<u>Description of Equipment</u>
C.H.1	Gantry crane with cantilever and short inclined conveyer in gantry. Span 17M. long
C.H.2	Horizontal conveyer 2 - 56M. long
C.H.3	Main inclined conveyer 2 - 147M. long
C.H.4	Horizontal conveyer 2 - 308M. long
C.H.5	Gantry crane. Span 82M. long
C.H.6	Conveyer 2 - 56M. long
C.H.7	Conveyer 2 - 122M. long

5. Pulverizing Equipment:

<u>Identifying Mark</u>	<u>Description of Equipment</u>
P.1	Ball Mill Pulverizer 8 MT/Hr.
P.2	" " " "
P.3	" " " "

P.4	Ball	Mill	Pulverizer	8	MT/Hr.
P.5	"	"	"	8	"
P.6	"	"	"	8	"
P.7	"	"	"	8	"
P.8	"	"	"	8	"
P.9	"	"	"	8	"
P.10	"	"	"	8	"
P.11	"	"	"	8	"
P.12	"	"	"	8	"
P.13	"	"	"	8	"
P.14	"	"	"	8	"
P.15	"	"	"	8	"
P.16	"	"	"	8	"
P.17	"	"	"	8	"
P.18	"	"	"	8	"

6. Outdoor Switch-yard:

Identifying Mark

Description of Equipment

S.Y.1	77 KV/12.6KV	63,000 KVA
S.Y.2	77 KV/12.6 "	63,000 "
S.Y.3	77 KV/12.6 "	63,000 "
S.Y.4	110 KV	2,800 AMP
S.Y.5	110 "	800 "
S.Y.6	110 "	800 "
S.Y.7	110 "	800 "
S.Y.8	110 "	800 "
S.Y.9	110 "	800 "
S.Y.10	110 "	800 "
S.Y.11	110 "	800 "
S.Y.12	110 "	800 "
S.Y.13	110 "	800 "
S.Y.14	110 "	800 "

7. Switch-board Room:

Identifying Mark

Description of Equipment

S.B.1	Panels
S.B.2	"
S.B.3	"
S.B.4	"
S.B.5	"
S.B.6	"
S.B.7	"
S.B.8	"
S.B.9	"
S.B.10	"
S.B.11	"
S.B.12	"
S.B.13	"
S.B.14	"
S.B.15	"

8. Auxiliary Equipment:

Identifying Mark

Description of Equipment

Aux.1	1,025 HP Feed Water Pumps
-------	---------------------------

Aux. 2	1,025 HP	Feed Water	Pumps	
Aux. 3	1,025 HP	"	"	"
Aux. 4	1,025 HP	"	"	"
Aux. 5	1,025 HP	"	"	"
Aux. 6	1,025 HP	"	"	"
Aux. 7	600 HP	Condenser Circulating Water		
				Pumps
Aux. 8	600 HP	"	"	"
Aux. 9	580 HP	"	"	"
Aux. 10	580 HP	"	"	"
Aux. 11	580 HP	"	"	"
Aux. 12	580 HP	"	"	"
Aux. 13	450 HP	Induced Draft	Fans	
Aux. 14	450 HP	"	"	"
Aux. 15	450 HP	"	"	"
Aux. 16	450 HP	"	"	"
Aux. 17	450 HP	"	"	"
Aux. 18	450 HP	"	"	"
Aux. 19	450 HP	"	"	"
Aux. 20	450 HP	"	"	"
Aux. 21	450 HP	"	"	"
Aux. 22	450 HP	"	"	"
Aux. 23	450 HP	"	"	"
Aux. 24	450 HP	"	"	"
Aux. 25	200 HP	Forced Draft	Fans	
Aux. 26	200 HP	"	"	"
Aux. 27	200 HP	"	"	"
Aux. 28	200 HP	"	"	"
Aux. 29	200 HP	"	"	"
Aux. 30	200 HP	"	"	"
Aux. 31	200 HP	"	"	"
Aux. 32	200 HP	"	"	"
Aux. 33	200 HP	"	"	"
Aux. 34	200 HP	"	"	"
Aux. 35	200 HP	"	"	"
Aux. 36	200 HP	"	"	"
Aux. 37	200 HP	Coal Mill	Pulverizers	
Aux. 38	200 HP	"	"	"
Aux. 39	200 HP	"	"	"
Aux. 40	200 HP	"	"	"
Aux. 41	200 HP	"	"	"
Aux. 42	200 HP	"	"	"
Aux. 43	200 HP	"	"	"
Aux. 44	200 HP	"	"	"
Aux. 45	200 HP	"	"	"
Aux. 46	200 HP	"	"	"
Aux. 47	200 HP	"	"	"
Aux. 48	200 HP	"	"	"
Aux. 49	200 HP	"	"	"
Aux. 50	200 HP	"	"	"
Aux. 51	200 HP	"	"	"
Aux. 52	200 HP	"	"	"
Aux. 53	200 HP	"	"	"
Aux. 54	200 HP	"	"	"

- 4: -

Aux.55	150 HP	Condensate		Pumps
Aux.56	150 HP	"		"
Aux.57	140 HP	"		"
Aux.58	140 HP	"		"
Aux.59	140 HP	"		"
Aux.60	140 HP	"		"
Aux.61	100 HP	Coal	Mill	Exhausters
Aux.62	100 HP	"	"	"
Aux.63	100 HP	"	"	"
Aux.64	100 HP	"	"	"
Aux.65	100 HP	"	"	"
Aux.66	100 HP	"	"	"
Aux.67	100 HP	"	"	"
Aux.68	100 HP	"	"	"
Aux.69	100 HP	"	"	"
Aux.60	100 HP	"	"	"
Aux.71	100 HP	"	"	"
Aux.72	100 HP	"	"	"
Aux.73	100 HP	"	"	"
Aux.74	100 HP	"	"	"
Aux.75	100 HP	"	"	"
Aux.76	100 HP	"	"	"
Aux.77	100 HP	"	"	"
Aux.78	100 HP	"	"	"
Aux.79	805 KV/3.45KV			5,000 KVA
Aux.80	805 KV/3.45KV			5,000 KVA

Tokai-Hokuriku Regional Bureau
of Commerce and Industry.

Nagoya, April, 28th 1947.

To:- Commanding Officer of Aichi Military Government Team.

Subject:- Opinion of The Director of Tokai-Hokuriku
 Regional Bureau of Commerce and Industry on the removal
 of Meiko Steam Electric Station from the reparation list.

This opinion is in connection with the petition attached hereto on removal of the Meiko Steam Electric Station from the reparation list.

The Meiko Steam Electric Station is a very important plant which cannot be dispensed with to meet the lowest necessary demands in Tokai district (i.e. Aichi, Gifu, Mi-e, and Shizuoka Prefectures), and the removal of the plant means bringing all industries in the above district to a seriously crippled condition in dry season in winter.

The electric supply to Tokai district covering the above four prefectures dropped short by 130,000 K.W. in the month of February last - the stream was the most parched in the year - with operation of all plants including those allotted for reparation, as full operation as the unheard-of poor supply of coal could allow. The amount of shortage was notwithstanding the full operation of all available power stations which were included the designated power stations in the reparation list. Owing to this electric shortage, most of industries in Tokai four prefectures were compelled to restrict the supply of electricity more than 50% of their demands and the operation of some factories were paralysed by emergency restriction of stopping supply every other day which was later aggravated as five days in a week. (Refer to item A in the Petition.)

Balance Table of Electric Supply and Demand in Tokai District
in last February. (Total amount of Hydro and Thermal Power)

Demand :-	480,000 K.W.	(with the exception of special demands for salt-making, electric boiler etc.)
Supply :-	350,000 K.W.	
Balance:-	130,000 K.W.	Shortage

As Tokai district belongs to the 60 cycle district in the central part of Honshu and is coupled with both Kinki and Hokuriku districts through the same transmitting network, the observation for the electric supply and demand is to be made by an aggregated amount of these three districts. Two tables viz. List No.1 attached to the Petition (Power Balance Table in February 1947 for Kansai 60 Cycle District.) and another one attached to this report. (Table as to the limit of actual capacity of steam power plants in Kansai 60 cycle district) are to be referred to in the following description.

- :2: -

In the total balance of electric supply and demand in the three 60 cycle districts in last February, it was recorded the demand of 1,850,000 K.W (i.e. forecast of electric demand without supply restriction but stopping supply to the special demands for salt-making, electric boiler etc.) against the supply of 1,350,000 K.W. (i.e. actual consumption under restriction) and the shortage being 500,000 K.W. As the above supplied amount of 1,350,000 K.W. includes supplemental amount of 130,000 K.W. by thermal power, the necessary thermal power, to be supplied in dry season should be 630,000 K.W. (i.e. actual supply of 130,000 K.W. plus shortage of 500,000 K.W.) Against the above figures the actual capacity of the thermal power are as follows :-

The actual capacity of all steam power stations in last February, (if enough coal were supplied) was 520,000 K.W. including the capacity of power plants subject to removal for the reparation list and 240,000 K.W. excluding the same capacity. (Refer to item B.) In the case of the power plants repaired completely (Refer to item E.) and war damages were restored (Refer to item F.) 536,000 K.W. should be the actual capacity of remaining power plants which are not subject to removal for reparation, using coal of similar quality available at present. In order to meet the demand of 630,000 K.W. against the above actual capacity of 536,000 K.W., the balance of 94,000 K.W. being the shortage of supply which should be covered by some power station. This 536,000 K.W. is considered to be realized in future and in this case the authorized capacity (Authorized capacity = (B) + (E) + (F) + (G) + (H) + (I), (E) + (F) + (G) + (H) + (I) = Drop in capacity classified) is not to be considered as the standard of the supplying capacity. Moreover, As it is not expected to use the designed quality of coal in near future, under the circumstances of supplying coal in Japan, it is also not to be considered as the standard of actual capacity. We, therefore, consider it is reasonable that the actual capacity is 536,000 K.W. (C = B + E + F) which will be available by burning the present available coals in Japan.

It is our intention that the shortage of 94,000 K.W. should be covered by the Meiko Steam Electric Station, though it can be covered by any station. The capacity of the Meiko Steam Electric Station is 100,000 K.W. (Item C) consuming the present available coals in Japan and it is, therefore, suitable for covering the shortage. Moreover, the Meiko Steam Electric Station is one of the latest constructed station in the 60 cycle district, and the highest efficient steam power station in Japan. Its coal consumption is lower more than 20% in comparison with other steam power stations in Kinki district, and it is, therefore, the most important station under the present circumstances in Japan, in view of less consumption of coal.

- 3: -

As described above, from the point of view of supply and demand of electricity in Tokai district and the superiority of its equipment, it is our earnest desire that the Meiko Steam Electric Station be eliminated from the reparation list.

Tokai-Hokuriku Regional Bureau
of Commerce and Industry



The Director.

775013

Table as to the limit of actual capacity and details of drop in actual capacity of steam power plants in the Kansai 60 cycle district (unit, in 1,000 KW)

Including Plants subject to removal for reparation	District	Authorized Capacity	Actual Capacity				Drop in Capacity classified				
			(A)	(B)	(C)	(D)	(E)	(F)	(G)	(H)	(I)
	Tokai	287	180	180	190	235	12	-	43	7	45
	Hokuriku	10	7	7	7	10	-	-	3	-	-
	Kinki	1,176.5	153	333	748	957.5	138	277	209.5	34	185
	Total	1,473.5	340	520	947	1,202.5	150	277	255.5	41	230
Plants not subject to removal for reparation	Toaki	129	65	65	75	95	10	-	20	7	27
	Hokuriku	0	0	0	0	0	0	0	0	0	0
	Kinki	701.5	55	175	461	574.5	99	187	113.5	30	97
	Total	830.5	120	240	536	669.5	109	187	133.5	37	124

- REMARKS:-
- (A) Present actual capacity, as of August 1946.
 - (B) Present actual capacity, as of Febuary 1947.
 - (C) Actual capacity expected in case of complete resumption of regular repairing and rehabilitation of war damaged parts (assuming using & coal of as poor quality as Present)
 - (D) Actual capacity estimated when designed quality of coal is obtained in the case of above (c).
 - (E) Drop in capacity due to lack of repairing
 - (F) Drop in capacity due to war damages
 - (G) Drop in capacity due to lower grade of coal
 - (H) Drop in capacity due to aging that cannot be recovered unless it is replaced.
 - (I) Lack of capacity for continuous running is comparison with the authorized capacity.

- NOTE:-
- Authorized capacity
 - = (B)+(E)+(F)+(G)+(H)+(I)
 - = (c)+(G)+(H)+(I)
 - = (D)+(H)+(I)

THE TOKAI HOKURIKU FEDERATION OF
CHAMBER OF COMMERCE & INDUSTRY

March 12th, 1947

To : The Industry Section of General Headquarters
Subject: Petition for your exempting the following plant
from the Reparation list.

Nippon Electric Generation & Transmission Co., Ltd.
(Weiko Branch)

We, the Chamber of Commerce & Industry, Nagoya, are aware that the Weiko coal power electric station is designated in the reparation list. However, we do earnestly hope that you would pay your special consideration to the matter for the importance of this plant in the draught season on the revival of industries in this area.

(1) We forecasted the necessity of 480,000 KW, the maximum electric power and 9 million KWH, the quantity of electric power per day, as the electric source of Nippon Electric Generation & Transmission Co., Ltd. to meet the demand (except the demand for electric salt-manufacture and for electric boiler) in Tokai 4 prefectures in the severest draught season in the last month, February. However we could not transmit more than 350,000 KW, the maximum, and 6,25 million KWH per day in spite of keeping an average years quantity of water power. That is to say, we could not but restrict the supply of balance quantity of 130,000 KW, the maximum, and 2,75 million KWH. For this reason, electric power for the industrial purposes in Tokai 4 prefectures had to be cut more than 50 percent as well as electric power for light, we being anxious about public peace, devided each quarters by turn at the busiest time. Accordingly we believe you can conjecture that the industrial circle in this area fell into a great confusion.

Tokai district, as you know, belongs to the said Kansai 60 cycles and connect with the same system of electric transmission as well as Tokai, Hokuriku district and so the deficient electric source in the last month, February, synthesized the above 3 districts, attained to the maximum of 500,000 KW and 10 million KWH per day in addition to the supply of coal-power.

But the necessary coal power generation to meet the demand completely, is 630,000 KW and 11.7 million KWH in addition of actual results in this year to the above deficient quantity because the coal power generation in all system in Kansai, is no more than the maximum of 130,000 KW and 1.7 million KWH in the cause of shortage of normal coal in this year. To say in other expression, we can not at last meet the demand in this area unless we operate this quantity of coal power generation and the coal power in Tokai district has to take the maximum of 25% in its charge for keeping such measure of coal power generation with all Kansai system. This is why we solicit to release Weiko Branch from the reparation list. Furthermore, in view of the fact that we expect about 6% of

increased demand in February of next year and inability of getting the help of electric power from Kanto region, we feel more necessary to have the much increased quantity of steam power. So, the removal of Meiko Branch, does never mitigate the regulation of electric power in winter season and we will not be in a position to look forward in the future of industrial circle in this district.

In considering the above situations, we would like to ask you specially pay your attention for releasing Meiko Branch from the list.

(2) For the above reasons we need the steam power generation in the draught season in Tokai district and Nippon Electric Generation & Transmission Co., Ltd. has two steam power plants in Tokai district at present. Namely, Meiko Branch (registered power of 138 MWH) and Nagoya Branch (registered power of 129 MWH) But as the later is quite old in its establishment and can not expect to get the average power of 65 MWH, it is very difficult by no means to supply the above mentioned deficient quantity of electric power in the draught season only with the remained installation of Nagoya Branch and we have to depend on the former plant

(3) Besides the Meiko Branch has the special coal furnace constructed in recent year and their consumption of coal is 0.65 Kg. per KWH and which will save almost about 20 % in comparing with the average quantity in all Kansai region, (Average quantity in all Kansai region is 0.85 Kg. per KWH.)

N.B. Description of the Meiko Branch

Employees	240	before the war.
	210	during & after the war.
Machineries		
Dynamo	53,000 KW	2 sets
"	30,000 KW	1 set
"	3,000 KW	1 set
Steam boiler	1EC ton PH	6 sets
(sectional)		

The Tokai Hokuriku Federation of Chamber of Commerce & Industry.

T. Miwa President.

PETITION

The Local Economic Rehabilitation Council
of Aichi Prefecture

March 5th, 1947
Nagoya, Honshu

PETITION

To General of the Army Douglas MacArthur
the Supreme Commander for the Allied Powers

We, members of the Local Economic Rehabilitation Council of Aichi Prefecture pay our heartfelt thanks and sincere respects to you and to all armed forces of the Allied Powers.

We have the pleasure in requesting that you will give your kind consideration to our application for removal of the Meiko Steam Electric Power Station from the reparations list in order to obtain necessary electric power supplies for peaceful rehabilitation of Japanese industries.

Aimed that we will reconstruct peaceful and democratic Japan and render what little contribution we can to happiness of the world, we feel keenly that first of all we should rebuild Japanese Economics which were devastated by thoughtless war. We, democratic managers of the business, workers in Aichi Prefecture, co-operated with merchants and manufacturers of middle and small scale commerce and industry, scientists, engineers, farmers organized the economic rehabilitation council with a view to establish concrete rehabilitation plan and break hindering facts which are obstacles to the present production in Japan.

We understand that the Meiko Steam Power Station was designated as object of the reparations by the Memorandum from the Supreme Commander for the Allied Powers dated August 24, 1946. Judging from the present situation of supply and demand of electric power, if the station will be removed as reparations program, it is true that it not only hinders our production but results unemployment of workers in industries of Aichi Prefecture and also gives great threat to all families concerned.

Being such cases as above mentioned, we are afraid that it prevents Japanese economic recovery. So we beg earnestly that you will take the subject into your kind reconsideration.

Now, the Meiko Steam Power Station was planned for construction in 1932 and completed in 1939 aimed at meeting electric power demands from Aichi, Gifu and Mie Prefectures, replacing for old electric power equipments in this district.

Although at that time its most demands were called for spinning, textile, pottery, fertilizer industries and other manufacturing industries of peace time machines and instruments, as all civilian factories were converted compulsory into arms and munitions factories, it must be misunderstood that this station was constructed for military purposes, but it was not indeed.

As for fibre industries in this district, it had been the top in Japan before war and consumed more than 30 per centages of all electric power demands in this district. The following table of electric power demands for industries in this district show that fibre industries still take important part in electric power demand:

Fibre industries	20	%
Pottery industries	10	%
Fertilizer industries	22	%
Electric industries	6	%
Metal industries	7	%
Machines & instruments Manufacturing industries	15	%
Chemical industries	10	%
Provision industries	1	%
Agricultural and Marine industries	1	%
Others	7	%
Total	100	%

As for pottery industries, production of table wares especially, have been the best in Japan from the olden times and export goods such as bicycles, watches, toys and agricultural apparatus we remain products in machines and instruments manufacturing industries. As stated, this district is the center of peace time civilian industries.

By reason of the weather, we are obliged to hull and clean rice in January and February of the year in which water are most insufficient to give electric power supply throughout the year. It is our sincere belief that sufficient electric power will be supplied for above purposes and we believe that the Meiko Steam Power Station has been constructed in Nagoya which is the center of electric power supply for this district.

In Tokai district at dry season in this winter, electric power demands even though their supplies are restricted only for iminent purposes, suspending their supplies for almost all special demands, are maximum 430,000 KW approximately. For this demands, capacity of supplies are 280,000 KW by hydroelectricity and 30,000 KW. So as for difference 130,000 KW, it must be depend on Steam Electric Power.

However actual capacity of remained steam power stations are 65,000 KW. Consequently at present 65,000 KW are shortage. At coming winter moreover demands will be expected to increase about 50,000 KW. after all more than 100,000 KW will be shortage even though their supplies will be increased a little.

In order to relieve this shortage of electric power which take large percentages in this district, there is no other way than our petition for continuance of this station.

Next, considering from demand and supply of electric power in central parts of Honshu, it will be expected that more than 350,000 KW of power will become shortage and for this shortage it will be most important to have the Meike Steam Power Station which actual capacity are 100,000 KW

As various reasons as described above, we, democratic peace lovers in Tokai district, make up our minds to contribute to the happiness of all nations in the world by spinning and pottery industries which are characteristic in this district and to atone for their crimes committed by war criminals by means of our sincere co-operation with the Allied Powers in order to meet their requirements of Occupation purposes.

Accordingly if this station will happen to be taken as object of reparations, we will have to construct another station of same scale. But with poor materials of the present, how can we rebuild such a station. We cannot. It is our great regret that we will come across the difficulty to fulfil our desire which will contribute to the happiness of all nations of the world.

We in the names of farmers, workers, managers and other democratic peace lovers, show our painstaking situations to you and we again ask that you will take a necessary step to remove the Meike Steam Power Station from reparations list after considering the above mentioned situations.

In closing, we wish from the bottom of our hearts for your excellent health and prosperous for the Allied Powers.

Yours Sincerely,

The Local Economic Rehabilitation Council
of Aichi Prefecture

NAME	SIGNED	ADDRESS	SIGNATURE
1. The National Federation of Labor, Aichi Union (Members 58,000)		14, 6-chome, Oike-cho, Naka-ku, Nagoya	S. Nagase Chairman
2. The Chubu Metal Workers Union (Members 10,000)	ditto		H. Kagima Chief
3. The Labor Union of Chemical Workers of Aichi Prefecture (Members 2,300)	ditto		S. Koto Chief
4. The Labor Union of Government Railway of Nagoya (Members 11,000)		226, 2-chome, Sasajima-cho, Nakamura-ku, Nagoya	Y. Kogakai Executive
5. The Labor Union of Nagoya Transportation Workers (Members 3,712)		29, Nakano-cho, Nishi-ku, Nagoya	M. Ito Executive
6. The Labor Union of Atan of Aichi Prefecture (Members 3,500)		Aza Okusa, Shinookamura, Higashi-kasugai-gun, Aichi Prefecture	Y. Hiraiwa Chief
7. The Federation of Ply Wood Labors Unions of Aichi Prefecture (Members 670)		76, Shinoto-cho, Atsuta-ku, Nagoya	M. Miura Chairman
8. The Federation of Labor of Fibre Workers Union (Members 12,000)		14, 6-chome, Oike-cho, Naka-ku, Nagoya	T. Furuta Chairman
9. The National Tobacco Workers Union, Nagoya Branch (Members 350)		4, Unga-dori, Nakagawa-ku, Nagoya	M. Okuhira Chief
10. The Federation of Labor of Lead Petty Transportation Workers of Aichi Prefecture (Members 400)		14, 6-chome, Oike-cho, Naka-ku, Nagoya	S. Nagase Chairman
11. The Federation of Labor of Pottery Labors Union (Members 11,000)		1, 2-chome, Horitadori, Mizuho-ku, Nagoya	M. Kawai Chairman
12. Labor Union of all Labors of the Nippon Express Co., Ltd. (Members 5,003)		c/o The Nippon Express Co., Ltd., Sasajima Branch Hieki-dori, Nakamura-ku, Nagoya	O. Suzuki Chairman
13. All Japan Coal Miners Union, the Nippon Sekitan Branch (Members 102)		c/o the Nippon Sekitan Branch Hieki-dori, Nakamura-ku Nagoya	M. Yamada Chief

NAME	ADDRESS	SIGNATURE
14. All Japan Iron & Steel Workers Union, Tokai Branch (Members 8,200)	c/o the Daido Steel Co., Hoshizaki plant Hoshizaki-cho, Minami-ku, Nagoya	A. Onishi Executive
15. All Japan Machine and Tool Workers Union, Aichi Branch (Members 15,000)	c/o Aichi Tokai Denki Co., Komahama-cho, Naka-ku, Nagoya	H. Terakado Executive
16. All Japan Port Workers Union, Nagoya Port Branch of Tokai District (Members 2,896)	1, 5-chome, Hama-cho, Minato-ku, Nagoya	M. Tai Executive
17. Government Railway Labor Union, Nagoya Congress (Members 18,000)	c/o Nagoya Govt Railway, Sasajima-cho, Naka-ku, Nagoya	T. Nakano Chairman
18. Lumber Workers Union of Aichi Prefecture (Members 1,745)	c/o Akita Lumber Co. 10, 2-chome, Masaki-cho, Naka-ku, Nagoya	B. Hori Executive
19. United Electric Radio & Machine Workers Ai-gi Branch (Members 8,600)	c/o Meidensha, Nishibiwajima-cho, Nishikasugai-gun, Aichi Prefecture	M. Inoue Executive
20. Nippon Press Workers Union, Chubu Nippon Press Branch (Members 1,141)	24, 2-chome, Miyukihonmachi-dori, Naka-ku, Nagoya	T. Asano Executive
21. Aichi Congress of all Japan Communication Workers Union (Members 15,690)	1, 1-chome, Miyukihonmachi-dori, Naka-ku, Nagoya	T. Matano Executive
22. All Japan Vehicle Workers Union, The Nippon Vehicle Co., Nagoya Branch (Members 4,481)	1, 1-chome, Sanbonmatsu-cho, Atsuta-ku, Nagoya	S. Kuwabara Chairman
23. Aichi Prefecture Marine Workers Union, Nagoya Branch (Members 4,050)	132, 5-chome, Hama-cho, Minato-ku, Nagoya	K. Kato Chief
24. All Japan Housing Labor Union, Nagoya Branch (Members 903)	c/o Tekihyo Bldg., Miyukihonmachi-dori, Naka-ku, Nagoya	T. Ito Executive
25. The Labor Union of Atan of Aichi Prefecture (Members 109)	c/o Chamber of C & I Oike-cho, Naka-ku, Nagoya	Y. Sato Chief
26. Nippon Movies and Play Workers and Moving Movies Tokai-Hokuriku Branch (Members 18)	14, 5-chome, Shima-cho, Nakamura-ku, Nagoya	A. Miwa Executive

NAME	ADDRESS	SIGNATURE
27. International Radio News Workers Union (Members 111)	56, 8-chome, Kamina-goya-cho, Nishi-ku, Nagoya	R. Kato Executive
28. All Japan Electric Workers Union (Members 14,500)	c/o Chubu Haiden, Minami-otsu-dori, Naka-ku, Nagoya	T. Saito Executive
29. All Japan Automobile Workers Union, Aichi Branch (Members 17,000)	Koromo-cho, Nishi-Kamo-gun, Aichi Prefecture	T. Ikushima Chief
30. The Labor Union of Kariya Koki (Members 1,200)	Kariya-cho, Hekikis-gun, Aichi Prefecture	T. Ishihara Chief
31. The Labor Union of the Toho Gas Co. (Members 775)	60, Sakurada-cho, Atsuta-ku, Nagoya	Y. Takayama Executive
32. Nippon Toki Kaisha Ltd.	Noritake-cho, Nishi-ku, Nagoya	U. Saegi President
33. Okuma Development Co., Ltd.	Tsuji-cho, Kita-ku, Nagoya	K. Murakami President
34. Nagoya Railway Co., Ltd.	Sasajima-cho, Nakamura-ku, Nagoya	H. Suda Managing Director
35. Kinki Nippon Railway Co., Ltd.	ditto	H. Mori Manager of business section
36. Chubu Electric Supplying Co., Ltd.	Otsumachi-cho, Naka-ku, Nagoya	F. Oiwa President
37. Nippon Gaiishi K.K.	Horita-dori, Mizuho-ku, Nagoya	Y. Morimura President
38. Howa Industry Co., Ltd.	Shinkawa-cho, Nishikasugai-gun, Aichi Prefecture	S. Nozaki President
39. Kowa Cotton Spinning Co., Ltd.	Miya-cho, Naka-ku, Nagoya	T. Miwa President

NAME	ADDRESS	SIGNATURE
40. Fuso Metal Industries, Ltd., Nagoya Plant	Chitose, Minato-ku, Nagoya	M. Nakamoto Plant Master
41. Toyota Motor Car Industry Co., Ltd.	Karasu-cho, Aichi Prefecture	K. Toyoda Managing Director
42. Japan Rolling Stock Manufacturing Co., Ltd.	Sanbonmatsu-cho, Atsuta-ku, Nagoya	S. Iwatori President
43. Aichi Kogyo Co., Ltd.	Toshin-cho, Higashi-ku, Nagoya	T. Kanda Managing Director
44. The Toho Gas Co., Ltd.	Sakurada-cho, Atsuta-ku, Nagoya	Y. Usune President
45. Kariya Machine Tool Co., Ltd.	Kariya-cho, Hakkai-gun, Aichi Prefecture	T. Kari President

775013



ware house

倉庫

財 技 備

(26) No. 1
(27) Salt works

ガソリンポンプ
1949
52121218

gasoline pump house

Dwelling house

Apartment

倉庫
52121218

24

27

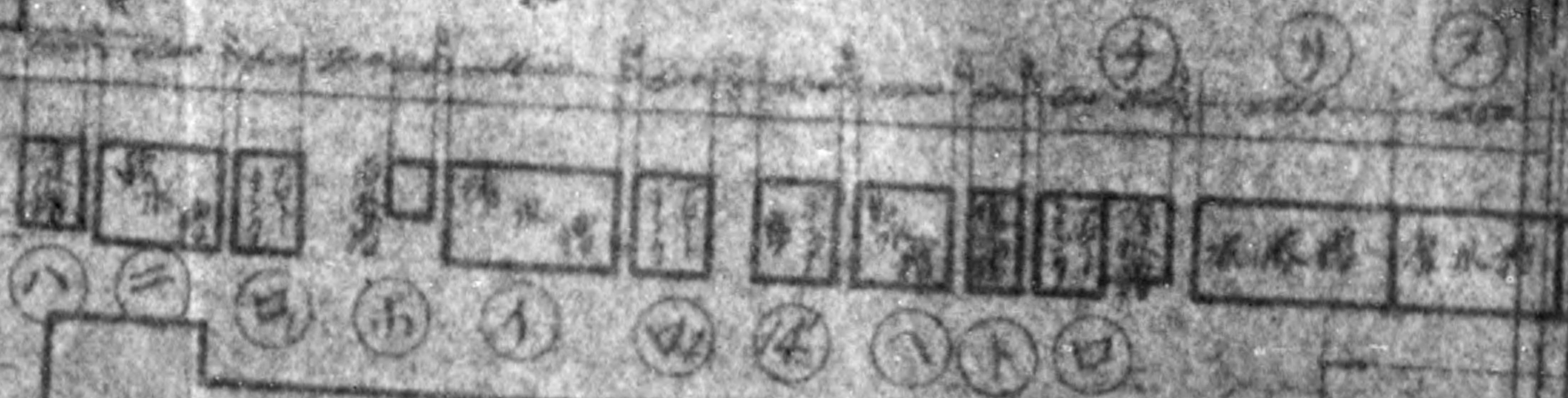
ware house



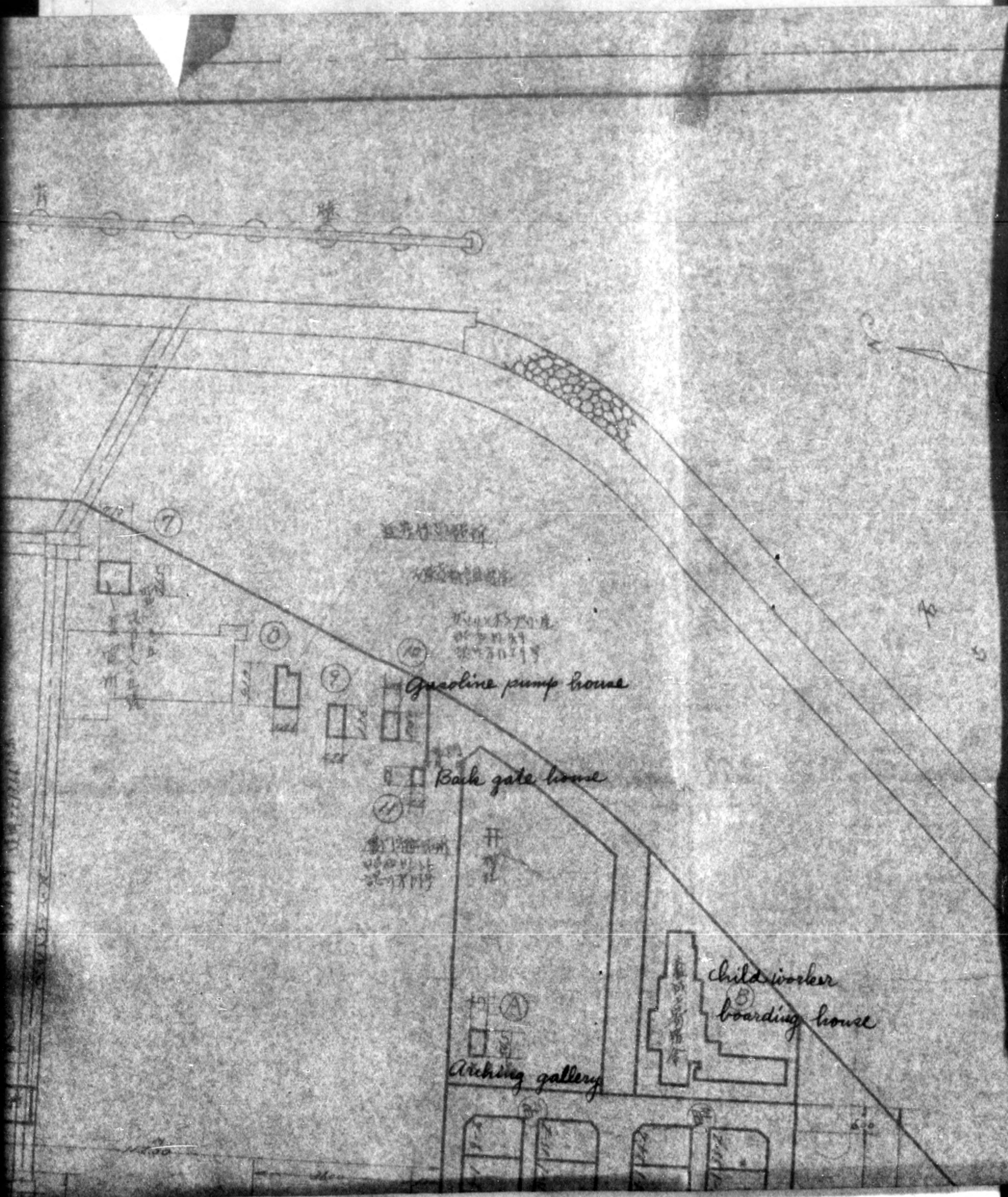
Ware house

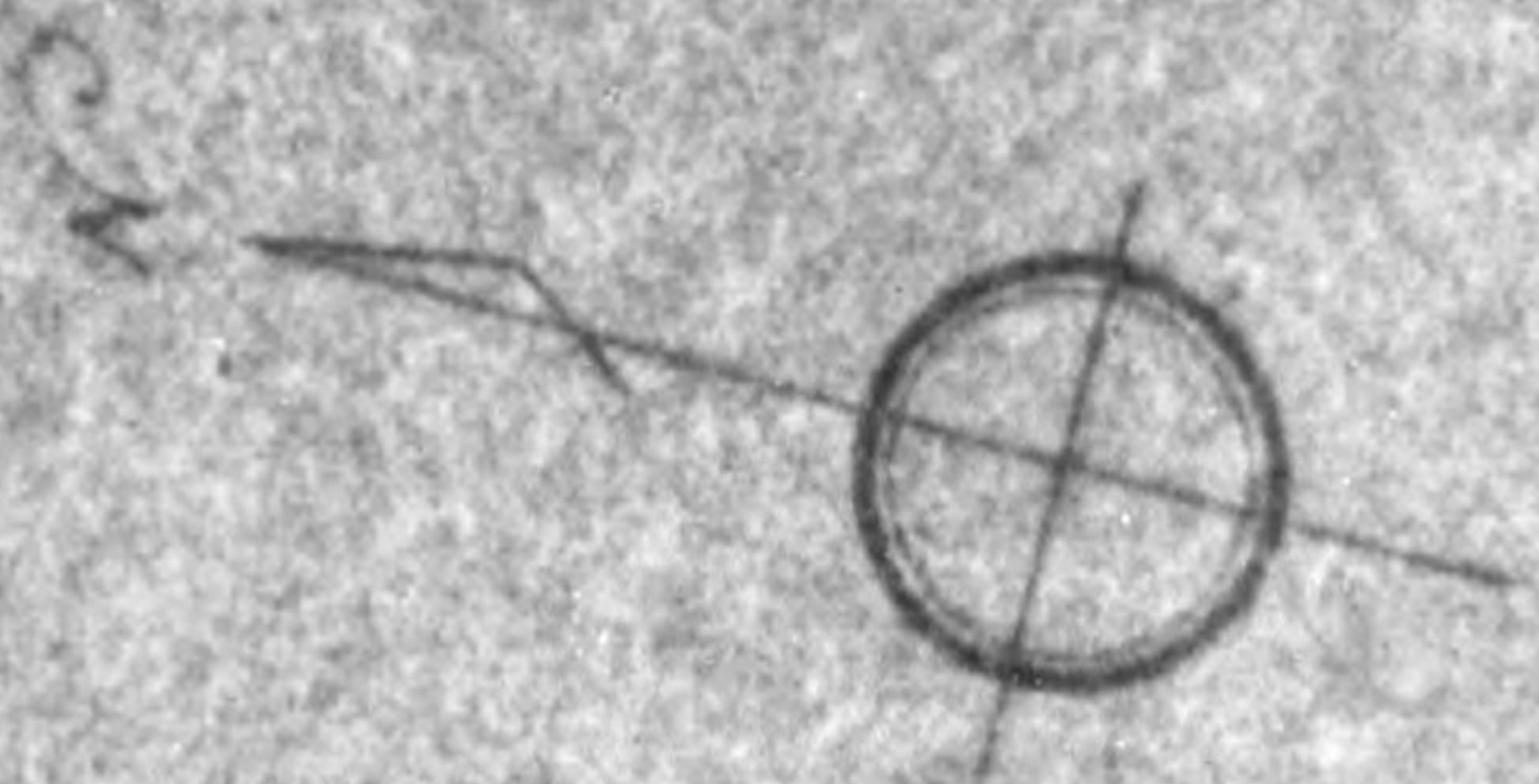
別 散 場

(26) No. 1 (26)
(27) Salt works



Vertical text on the right side of the page, possibly a title or reference number.





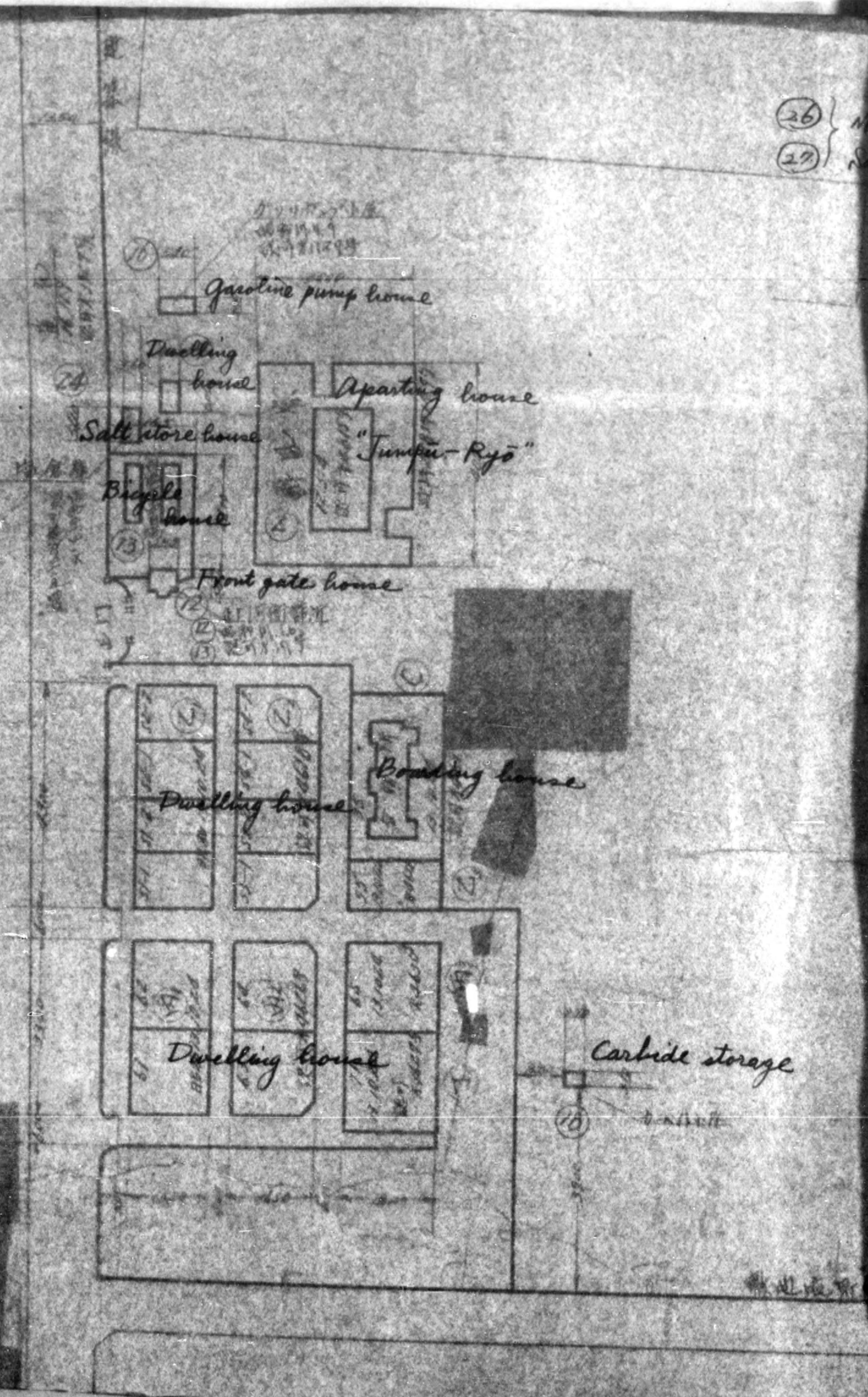
申請建物系人

本
 5
 本
 花

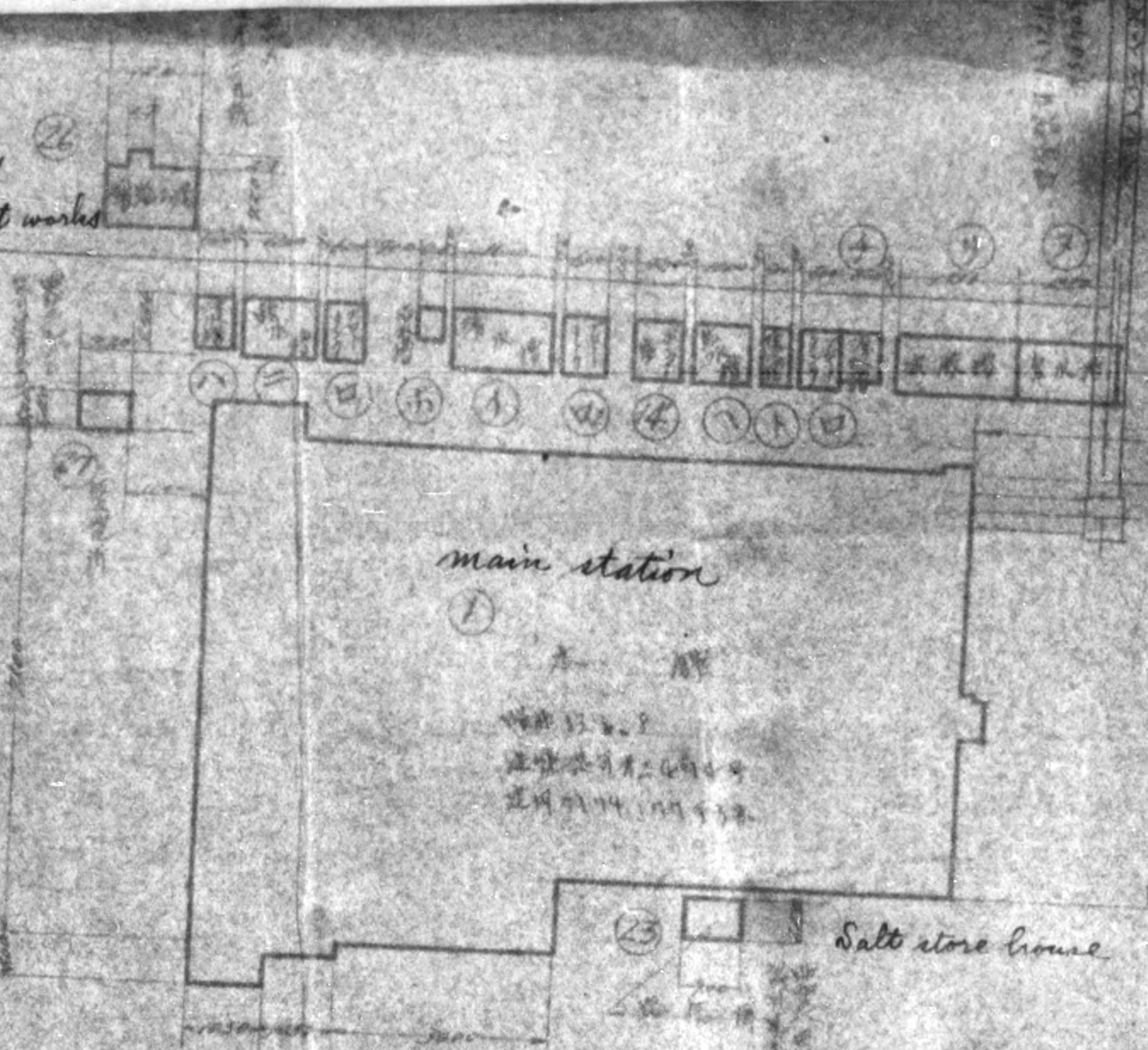
ouse

600

(26) }
(27) }



(26) No. 1
(27) Salt works



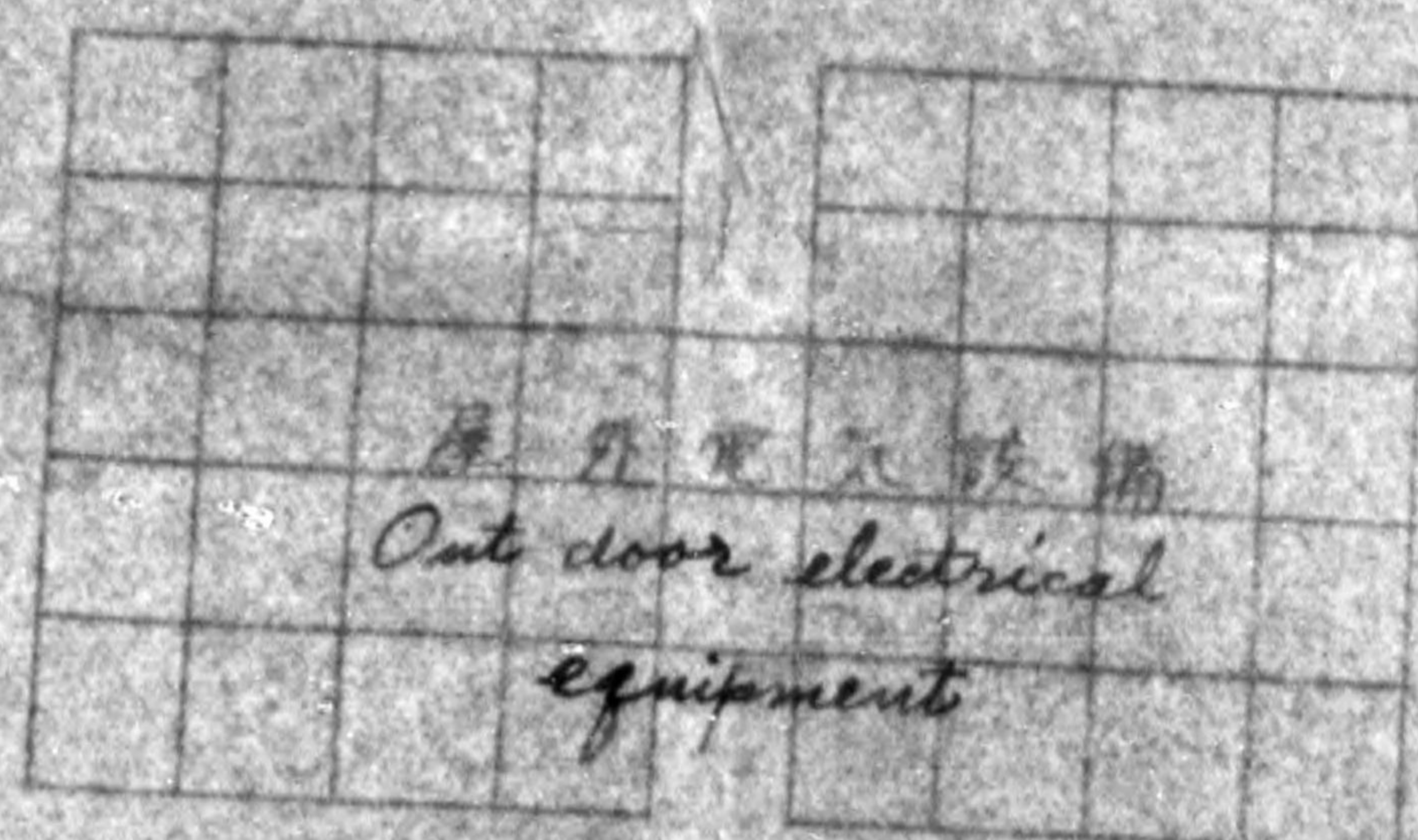
main station

①

塩田 13 号
 建設年月 1944 年
 完成年月 1944 年

Salt store house

②③



屋外電気設備
 Out door electrical
 equipment

Employee house
 in charge of
 electric's depart.

Developing room
 of blue print

Repair house

Pipe work shop

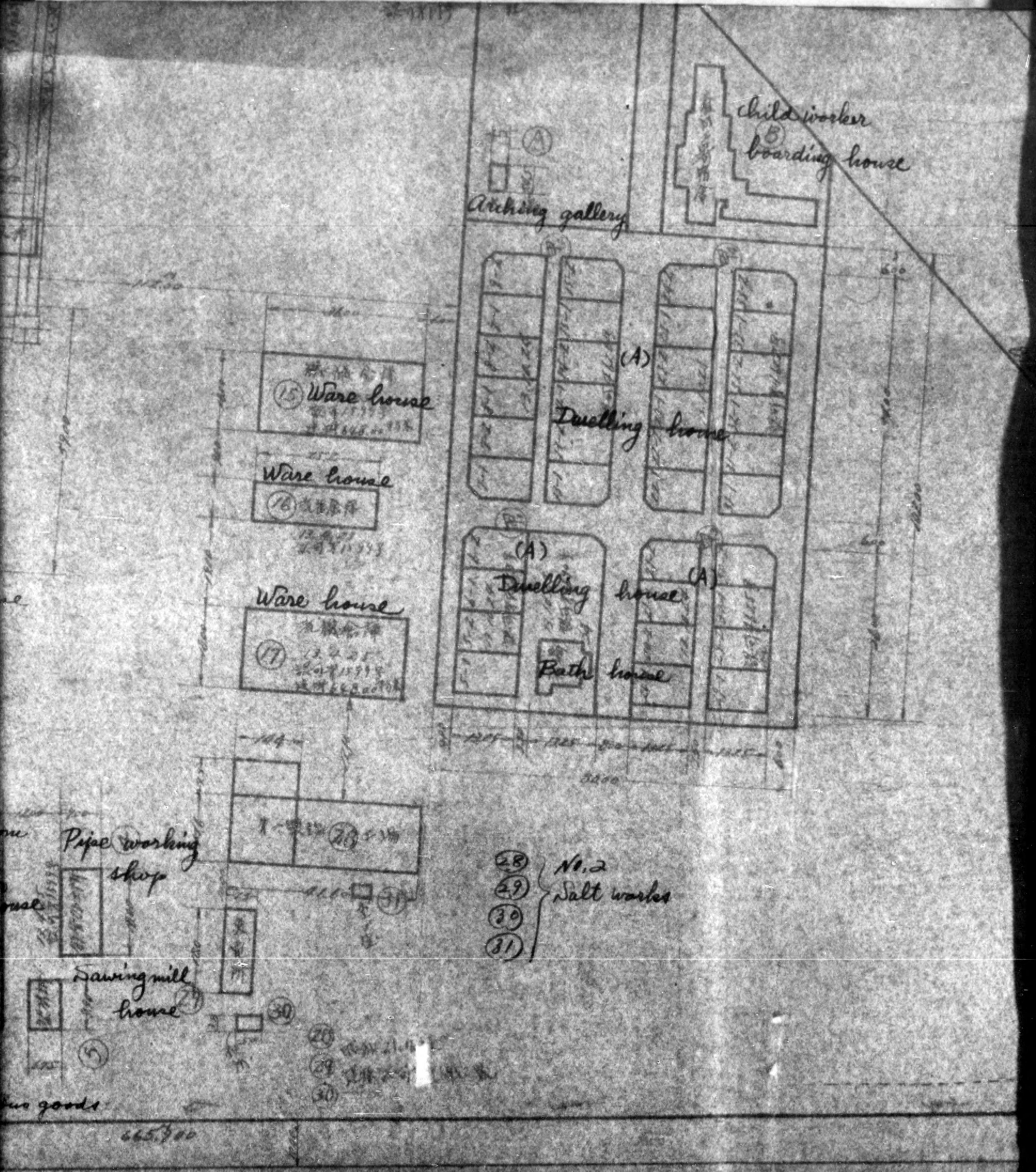
Print shed

Oil store house

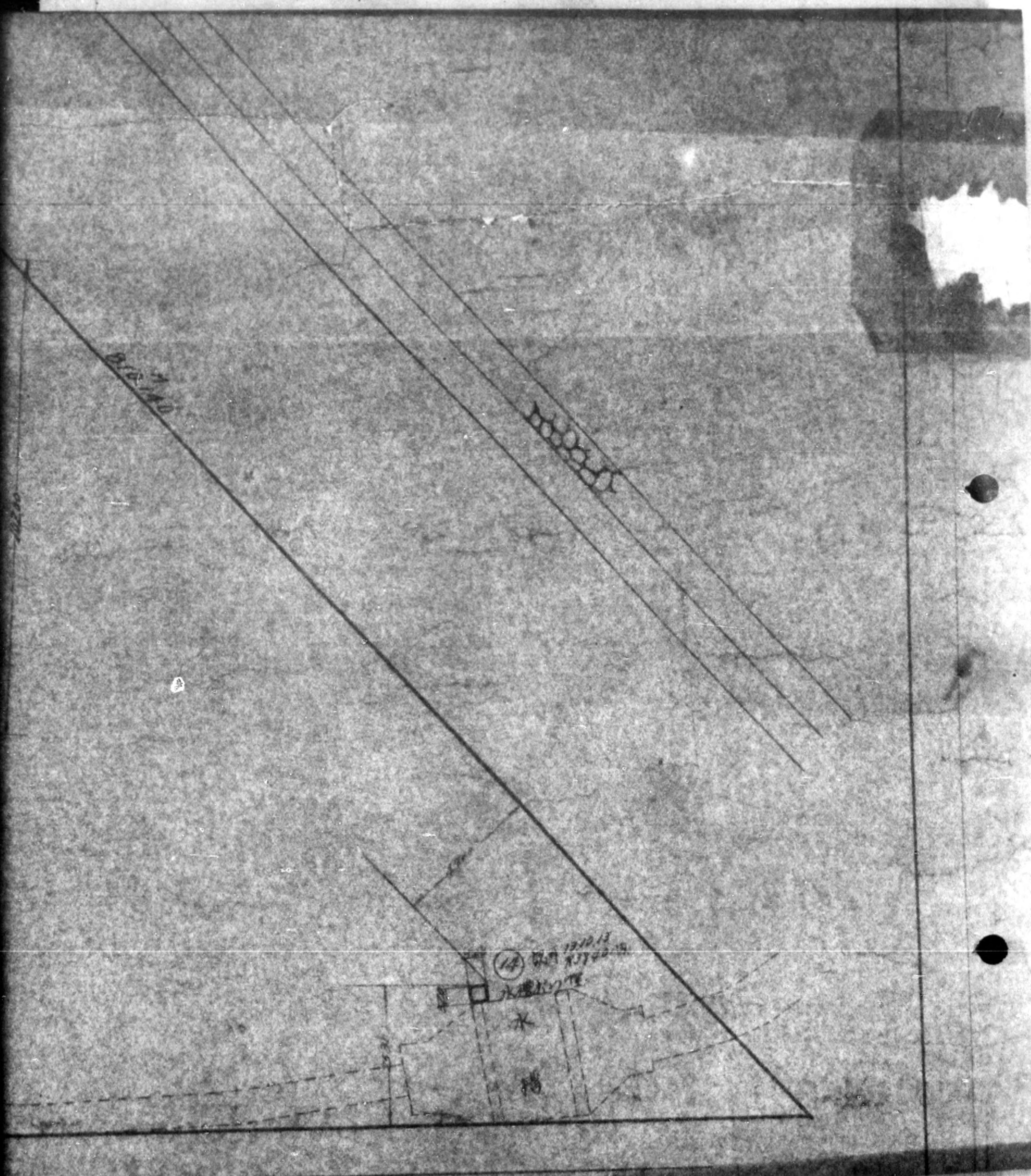
Ware house for miscellaneous goods

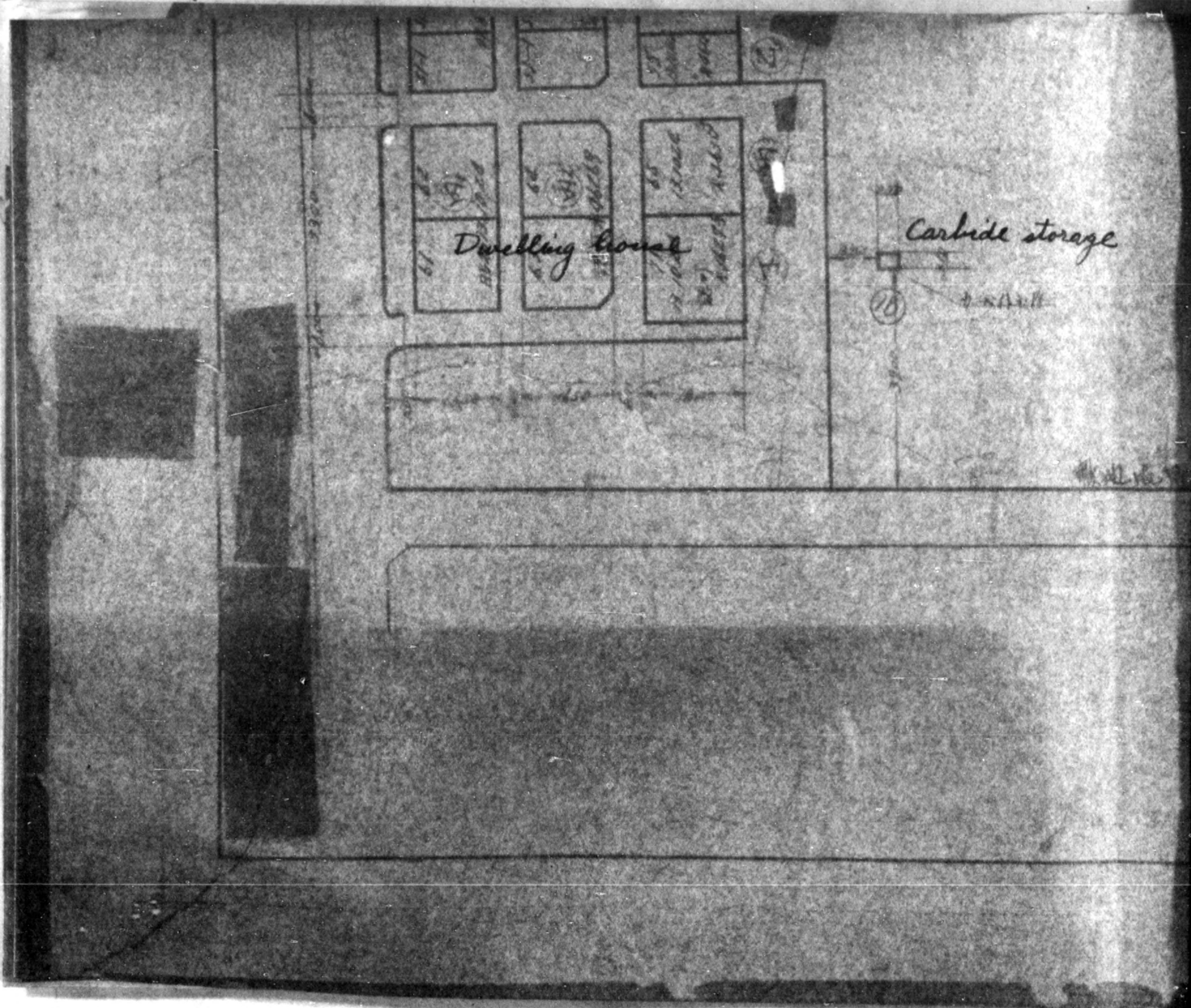
Sawing mill house

side storage



775013





屋外電気設備
Out door electrical
equipment

Carbide storage

Employee house
in charge of
electric's depart

Developing room
of blue print

Repair
house

Drum shed

Oil store
house

Ware house
for miscellaneous goods

10

22 21 20

20

25

21

22

3

1

6

5/20/55
5/21/55
5/22/55

倉庫

油庫

炭化

修理

油庫

倉庫

倉庫

倉庫

倉庫

倉庫

倉庫

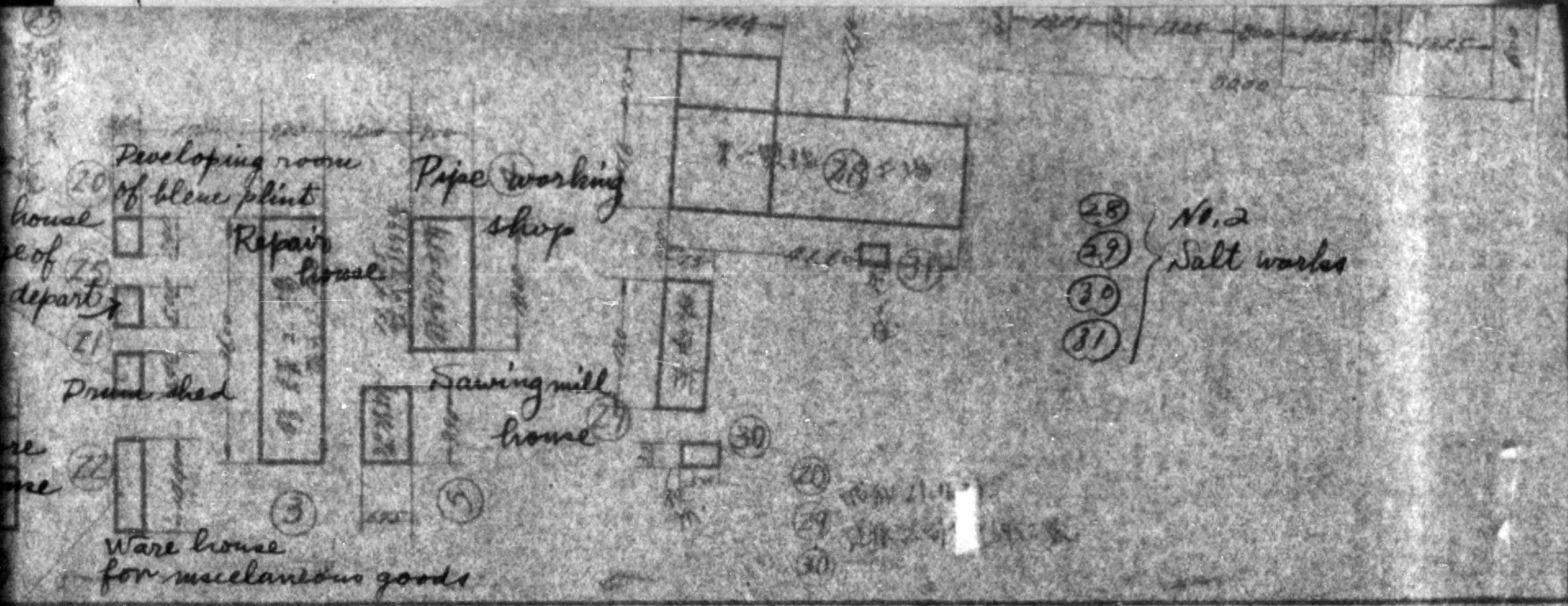
倉庫

倉庫

倉庫

倉庫

倉庫



775013



建築物配置圖

縮尺	1:1000	日期	11-3-20
製圖		繪圖	

HEADQUARTERS
ALBION MILITARY GOVERNMENT TEAM
APO 710 (Nagoya, Honshu)

EFJ/ek

16 July 1947

SUBJECT: Temporary Use of Reparations Machinery

THRU: The Japanese Liaison Office
Tokai-Kokuriku Region, Nagoya

TO: Nagoya Koso Kaisha (Nagoya Stevedoring Co.)
Kaigan-Dori, Minato-ku, Nagoya

1. The temporary use of the crane of the Hippen
Kosoden K.K., Kaiko Plant by the Nagoya Stevedoring Co.
is approved.

2. The Nagoya Stevedoring Company will be held
responsible for proper custody, control and maintenance
of this machine.

FOR THE COMMANDING OFFICER:

ROBERT V. HUNTERSON
Capt GHP
Executive

HEADQUARTERS
AICHI MILITARY GOVERNMENT TRAIN
APO 710 (Nagoya, Honshu)

EFJ/ek

10 July 1947

SUBJECT: Temporary Use of Reparations Machinery
FROM: The Japanese Liaison Office
Tokai-Hokuriku Region, Nagoya
TO: Nippon Kaasoden Kaisha, Keiko Hatudenaka
Iohsu-cho, Minami-ku, Nagoya

1. The temporary use of the cranes of the Nippon Kaasoden K.K., Keiko Plant by the Nagoya Stevedoring Company is approved.

2. The Nagoya Stevedoring Company will be held responsible for proper custody, control and maintenance of this machine.

3. Proper notation will be made on inventory sheet relative to the use of cranes.

FOR THE COMMANDING OFFICER:

ROBERT W. HENNINGSON
Capt CAP
Executive

Nippon Hassoden

V

HEADQUARTERS
AICHI MILITARY GOVERNMENT TEAM
APO 710 U. S. ARMY

13 May 1947

SUBJECT: Temporary Use of Reparations Machinery

TO : Commanding Officer, Tokai-Hokuriku
Military Government Region, APO 710
ATTN: Res, Comm & Ind Section

1. Transmitted herewith in quintuplicate is an application from the Nagoya Stevedoring Co. Ltd. to make temporary use of a coal crane of the OD-5 (01-86) Meiko plant of the Nippon Hassoden K.K. pending removal under the reparations program.

2. The present facilities for unloading barges that are carrying imported cargoes from incoming ships are entirely inadequate and the Stevedoring Company believes that by the use of the large coal crane of Nippon Hassoden K.K. the capacity for daily unloading can be increased by 1500 tons.

3. A careful investigation by this headquarters indicates that the area and crane can be used with proper precautions in such a way as not to interfere with the custody of the reparations plant. Inasmuch as the Shipping Officer of this headquarters urges the need for speedier unloading of incoming ships this headquarters recommends approval of this application.

FOR THE COMMANDING OFFICER:

1 Incl:
1 Application
(5 copies)

Robert W. Hutcherson
ROBERT W. HUTCHERSON
Capt CWP
Adjutant

1030

AMG 197

2789

BASIC: Ltr, Hq Aichi Mil Govt Team, subj: "Temporary Use of
Reparations Machinery", dtd 13 May 47

1st Ind

GNM/ss

Hq Tokai-Hokuriku Mil Govt Region, APO 710, 16 May 47

TO: CG, I Corps, APO 301
ATTN: Mil Govt Section

This headquarters recommends that the Stevedore Company be authorized permission to use the Coal Crane of the Meiko plant (01-86) until such time as it is required for reparations.

FOR THE COMMANDING OFFICER:

B-176
HQ. I CORPS
AG 004

Frank M. Wilkins

FRANK M. WILKINS
Maj FA
Adjutant

1 Incl:
n/c
lcc w/d

AG 004 - BA

2nd Ind

EHN/mm

Hq I Corps, APO 301, 19 MAY 1947

TO: CG, Eighth Army, APO 343

In view of the facts disclosed in basic communication, it is the recommendation of this headquarters that the Nagoya Stevedoring Company be authorized temporary use of a coal crane of the Nippon Hassoden K.K., Meiko Plant.

FOR THE COMMANDING GENERAL:

H. B. Taylor
H. B. TAYLOR
MAJOR, A.S.D.
ASST. ADJ. GEN.

1 Incl:
n/c

47170

1030

Ltr, Hq Aichi Mil Govt Team, subj: "Temporary Use of Reparations Machinery", dtd 13 May 47.

AG 004 (MG-Em) 3rd Ind

Headquarters Eighth Army, APO 343

TO: Commanding General, I Corps, APO 301

9 JUN 1947

1. The temporary use of the crane of the Nippon Hassoden K.K., Meiko Plant by the Nagoya Stevedoring Company is approved.
2. The Nagoya Stevedoring Company will be held responsible for proper custody, control and maintenance of this machine.
3. Proper notation will be made on inventory sheet relative to the use of crane.



BY COMMAND OF LIEUTENANT GENERAL EICHELBERGER:

[Handwritten signature]

R. SCHAFER
Lt. Col., AGD
Asst. Adjutant General

B-MG
HQ I CORPS
AG 004

1 Incl:
1 copy w/d

AG 004 - BA 4th Ind

EHN/mss

Hq I Corps, APO 301, 13 JUN 1947

TO: CO, Tokai-Hokuriku Mil Govt Region, APO 710

Your attention is directed to the 3rd indorsement.

BY COMMAND OF MAJOR GENERAL WOODRUFF:

[Handwritten signature]
A. SEIPEL
Lt. Col., AGD
Adj. Gen.

1 Incl:
1 cc w/d

50350

1022

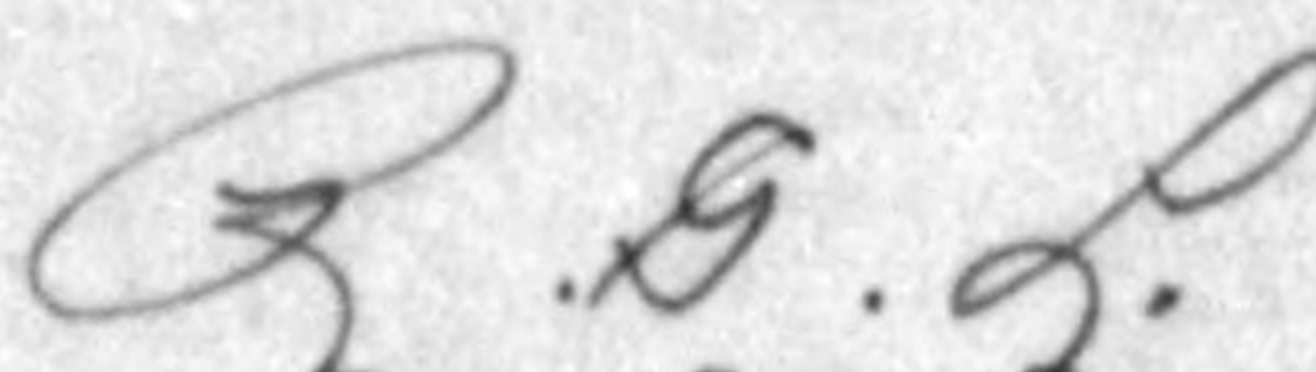
775013

BASIC: Ltr, Hq Aichi Mil Govt Team, Subj: "Temporary Use
of Reparations Machinery", dtd 13 May 47

5th Ind

Hq Tokai-Hokuriku Mil Govt Region, APO 710, 17 Jun 47

TO: CO, Aichi Mil Govt Team, APO 710


R. G. L.

1 Incl:
n/c

1022

09518
JUN 19 1947

Nagoya Koun Kaisha, Ltd.
 (Nagoya Stevedoring Co., Ltd.)
 Kaigan-Dori, Minatoku,
 Nagoya, Japan.

Nagoya, 30th April, 1947.

To: Aichi Military Government Team.
 Through: Liason Office, Aichi Prefecture.
 Subject: Petition for the permission of using the coal-crane of
 the Meiko Hatsudensho of Nippon Hassoden Kaisha, (West
 Power Plant of Nagoya Harbor)

Sir,

Now, the whole facilities of unloading barges, especially phosphate rock, including Government Railway's Coal-Crane and East Power Plant's Coal-Crane, are not sufficient enough to get empty barges to supply to the ships for discharging more than 1,500 (Fifteen hundred) tons of cargoes in a day.

If we have empty barges enough to discharge cargoes from ships, we are able to discharge more than 2,500 (Twenty five hundred) tons of cargoes in a day, as our ^{from one ship} past records show .

The only remaining means to get more empty barges is, we think, to use the coal-crane of the Meiko Hatsudensho of Nippon Hassoden Kaisha, (West Power Plant) to unload the cargoes from barges onto ground.

The facility of the above mentioned crane is believed to be, at least 1,500 (Fifteen hundred) tons in a day, carrying 3 (Three) tons by one hold, and the ground being spacious enough to pile up more cargoes of 50,000 (Fifty thousand) tons.

The plant is in the list of Japanese reparation and we hereby ask your permission of using the crane of that plant to unload the cargoes, especially phosphate rock, from barges onto ground.



Yours faithfully,

Nagoya Koun Kaisha, Ltd.
 (Nagoya Stevedoring Co., Ltd.)

J. Torii
 Managing Director.

del 13