

PRODUCERS & DISTRIBUTORS

of

**Fresh, Frozen, Salted, Mildcured & Canned Salmon,
Canned Crab, Red Caviar & Fish Meal**

NICHIRO GYOGYO KAISHA, LTD.

Marunouchi Building, Tokyo

CAPITAL: Yen 53,800,000

BRANDS:—"Daybreak" "Three Diamonds" "Summer Seas"

Selling Agents in the United Kingdom:

Mitsubishi Shoji Kaisha, Limited 117, Fenchurch Street, London E. C. 3
Sale Tilney & Company, Limited 3 Lloyds Avenue, London E. C. 3

TAKASHI AKIYAMA

374, Marunouchi Building,
Marunouchi, Tokyo.

Exporter & Importer

of

Cigars, Cigarettes, Leaf

Tobacco, Copra,

Papain and Medicines.

**JAPAN-MANCHOUKUO
YEAR BOOK**

Service Bureau

Every Line of Commercial, Financial
and Industrial Information
Supplied Promptly
at
Moderate Cost

(Minimum Charge: U.S. \$2 or 8/-)

Address All Inquiries to

SERVICE BUREAU

Japan-Manchuokuo Year Book Co.

Toyo Building, Uchiyamashita-cho,
Kojimachi-ku, Tokyo

Cable Address: "JAPMAN TOKYO"

AD. 46

General Cable Address:
"ATTENTION KOBE"

All Codes Used

The Standard Braid & Produce Co. of Japan!

P.O. Box 124, Sannomiya
KOBE

**GENERAL EXPORTERS & IMPORTERS
MANUFACTURERS' REPRESENTATIVE**

ALBERT THORDSIEN

SOLE AGENT of:



FRIEDRICH KRUPP A. G., ESSEN
for SPECIAL STEEL & ALLOYS



Stainless Steels ("V 2 A," "V 4 A," "V-M" "V-F")
Heat Resisting Steel ("N C T" and "F F")
High Speed Steels ("D F M" — brands!)
Tool Steels (special brands for all purposes)
Construction Steels (speciality CrMo-Steels "FK")
Aeroplane Steels ("A E R O")
None Altering Steels ("I Z E T T")

HARD METALS: "WIDIA," varied kinds for any purpose!
HARD FACING ALLOYS: "PERCIT," "DIAWELD" etc.

INTERNATIONALE ZIEHSTEIN-UNION, ESSEN

Drawing Dies, Drawing Matrices etc. of KRUPP-
WIDIA, WIDIA-ELRAMID, WALLRAMIT, DIAMOND
Polishing machines and other accessories for drawing purposes.

AMAG-HILPERT-PEGMITZHUETTE, NUERNBERG

Pumps, Valves, Cocks of acid resisting steel, stainless
casting ("KRUPP-THERMISILID") etc.

VEREINIGTE CARBORUNDUM- & ELEKTRO-WERKE A. G.

Grinding Wheels & — Stones, all kinds.

N. V. WALLRAMIT HANDEL MAATSCHAPPIJ, ROTTERDAM

Sandblast Nozzles of Hardmetal "TRIAMANT" patented
in the whole world, big saving in 1) nozzle consumption 2) air con-
sumption and 3) blasting time!

**IMPORT of MACHINES & ALL TECHNICAL ARTICLES
MANUFACTURING of APPARATUS from KRUPP-STEEL.**

Apply to: Head Office KOBE, P. O. Box 124, Tel.: Fukiaiku 4610-2
or Branch Office, Tokyo, 8 Marunouchi 3-chome, Tel.: (23) 856.

AD. 47

ESTABLISHED IN 1919

Toyo Takushoku Kabushiki Kaisha

(ORIENTAL DEVELOPMENT CO., LTD.)

TOYO BUILDING

Uchiyamashita-cho, Kojimachi-ku, Tokyo

Capital Subscribed: Yen 50,000,000

Capital Paid-up: „ 35,000,000

President: NAGAYOSHI TAKAYAMA

Directors:

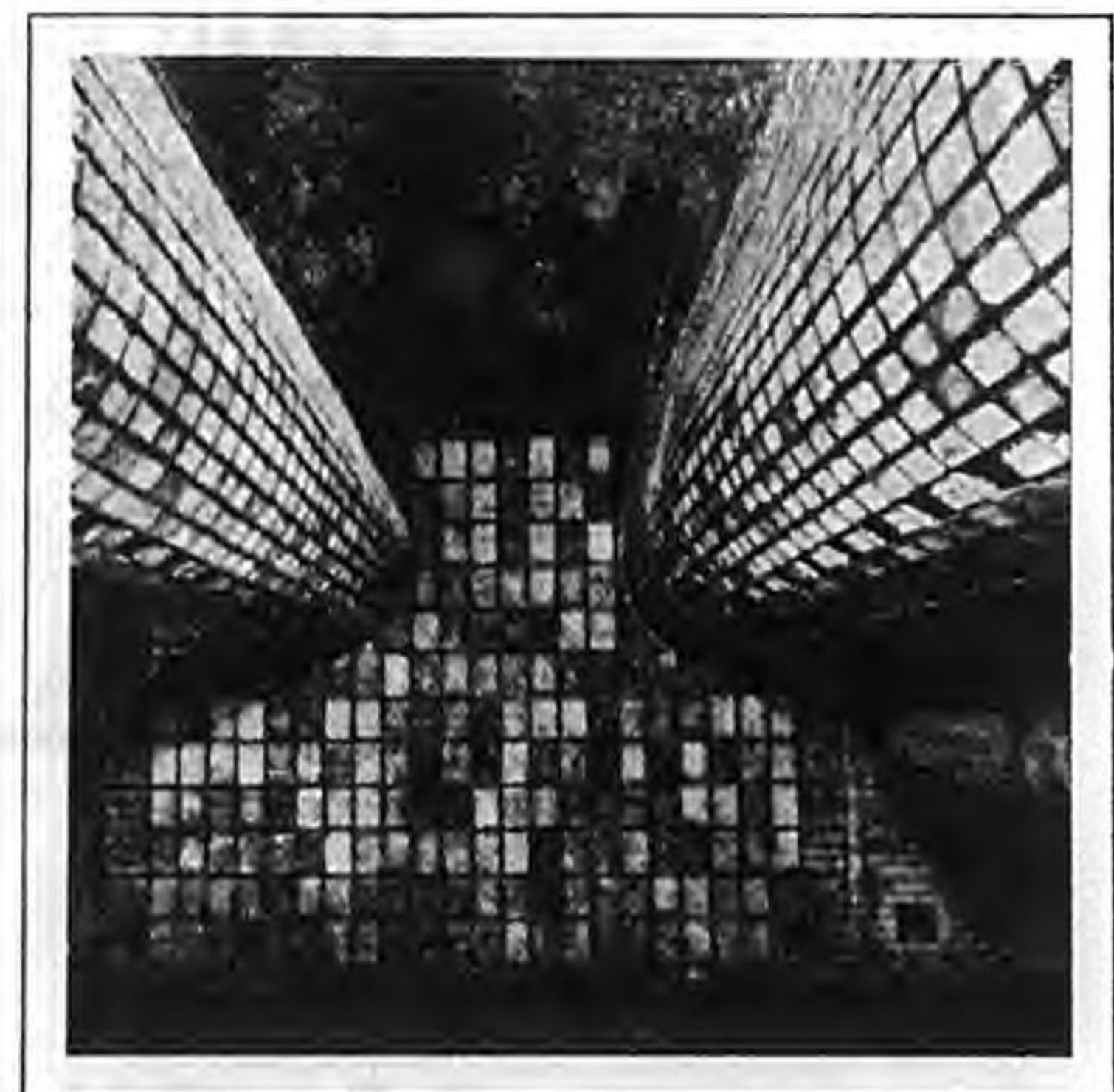
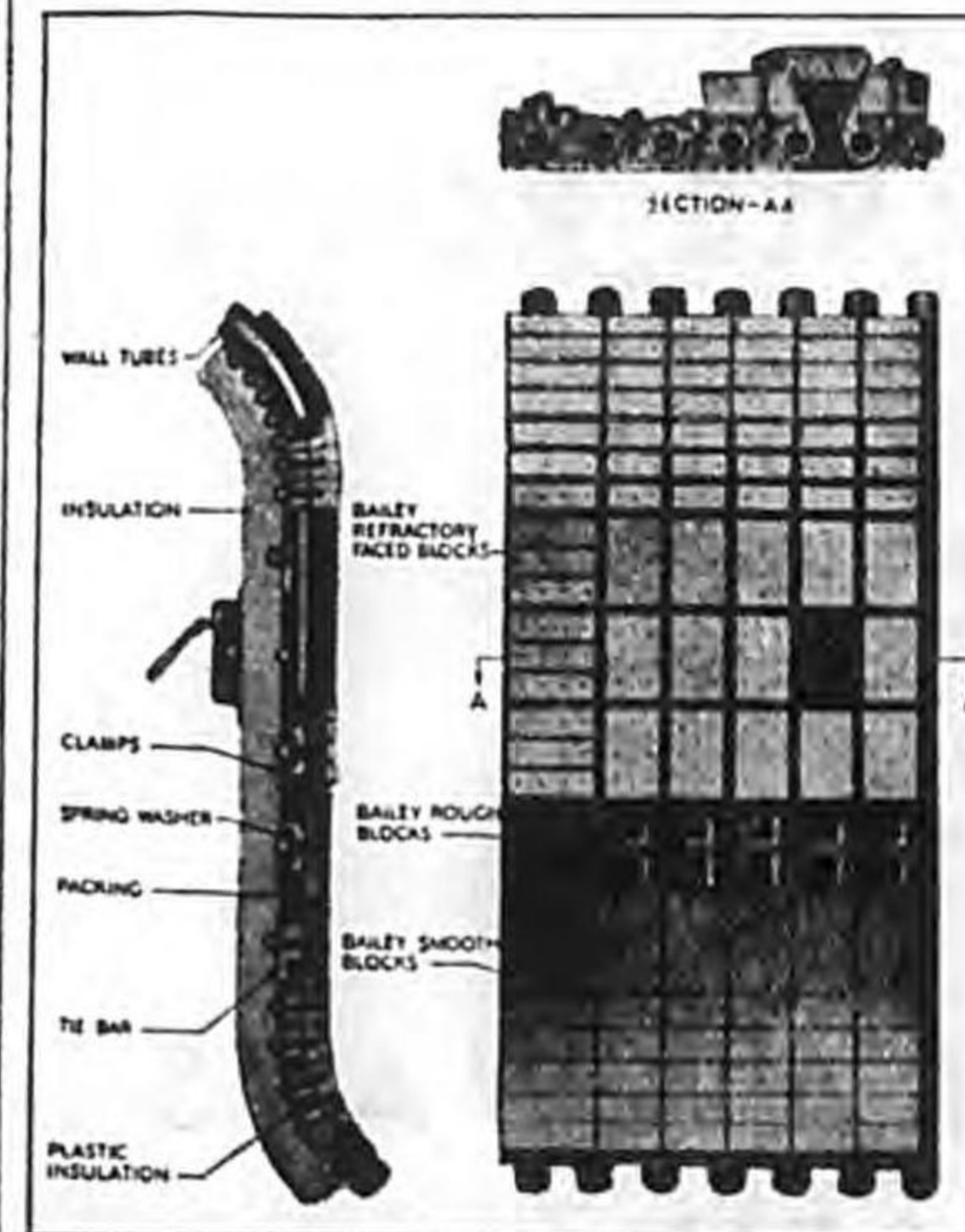
S. Watanabe T. Kubodera B. Sakata M. Oshima

BRANCHES:

KEIJO, FUSAN, TAIKYU, HEIJO, GENZAN, MOPPO, TAIDEN,
RIRI, SHARIIN, MUKDEN, DAIREN, HARBIN, TIENTSIN,
CHENTAO, TSINGTAO, SHANGHAI

AD. 48

Over
1,000,000 sq. ft. of Bailey Walls
in world-wide service in 1935



BAILEY FURNACES ARE GENERATING MORE THAN 170,000,000 LBS. OF STEAM PER HOUR IN ALL KINDS OF INDUSTRIAL PLANTS THROUGHOUT THE WORLD BURNING ALL CLASSES OF COAL FROM LIGNITE TO ANTHRACITE. FOR PARTICULARS APPLY TO

東洋バブコック株式会社

横濱市磯子區磯子町一番地

AD. 49

CHOSEN RAILWAYS



QUICKEST,
MOST COMFORTABLE ROUTE

BETWEEN EUROPE AND THE
FAR EAST

GOVERNMENT RAILWAYS
OF CHOSEN

KEIJO, CHOSEN (KOREA)



SOUTH MANCHURIA RAILWAYS

"Trains and Hotels of Luxury and Comfort"

TRAIN SERVICE

Dairen—Hsinking	(Express Train)	Once a day
Dairen—Hsinking	(Through Train)	Twice a day
Fusan—Mukden	(Express Train)	Twice a day
Fusan—Mukden	(Through Train)	Thrice a day

CONNECTIONS

- AT ANTUNG—Chosen Gov't Rys. (for Japanese Gov't. Rys.)
- AT HSINKING—Kirin-Hsinking Line.
- AT HSINKING—North Manchuria Ry. (for the Trans-Siberian Route)
- AT MUKDEN—Mukden-Shanhaikwan Line.

STEAMER CONNECTIONS AT DAIREN

To Tientsin, Chefoo, Tsingtao, and Shanghai

HOTELS

YAMATO HOTELS—Dairen, Hoshigaura, Port Arthur, Mukden and Hsinking

TICKET AGENTS

International Sleeping Car Co., Nordisk Resebureau, Japan Tourist Bureau,
Thos. Cook & Son, The American Express Co., Etc.

South Manchuria Railway Company

Head Office: DAIREN Tel. Add.: "MANTETSU" or "SMRCO"
Branches: Tokyo, Shanghai, Harbin, Peiping and New York.

Cable Address: "BUCKNEY TOKYO"

Telephone: Ginza (57) 9294

ARTHUR BUCKNEY, A.M.I.E.E.

CONSULTING ENGINEER

MEMBER JAPANESE SOCIETY OF MECHANICAL ENGINEERS
MEMBER JAPANESE SOCIETY OF ELECTRICAL ENGINEERS
MEMBER JAPANESE SOCIETY OF FUEL

Fuel, Chemical and Civil Engineering

(INTERNATIONAL ENGINEERING ASSOCIATES)

SHISEIDO BUILDING
GINZA, NISHI-NANACHOME, KYOBASHI-KU
T O K Y O

Japanese in Three Weeks

(SECOND & REVISED EDITION)

Conceded the simplest and most authoritative book for beginners in the Japanese language. By systematic instructions the difficulties of the Japanese language have been obviated to a striking degree. "Japanese in Three Weeks" is a remarkable departure from the ordinary, cumbersome methods of language study. Pains have been taken by the editors to make the book immediately practical. Numerous questions, answers and statements in every day need have been incorporated and unified into the larger scheme of the book, including

"Phrases in Cupid Land"

A special feature of the Revised Edition

PRICE: Yen 3.00 in Japan

SOLD IN TOKYO AT:

Maruzen, Kyobunkwan and the Imperial Hotel.

YOKOHAMA AT:

Hotel New Grand, Yoshikawa Book Store,
Yurin-do Book Store, Fujiya Hotel (Hakone)

Or send your order direct to the publisher:

S. SHEBA,

P. O. Box 333, Central, Tokyo, Japan.

HANDY GUIDE TO JAPAN AND THE ORIENT

By Y. Kagami

WITH 18 MAPS

CONTAINING:

All travel information, Things Japanese,
Historical Background, Easy
Japanese Etc.

\$1.00 in U.S.A.

**JAPAN PUBLICITY
AGENCY**

Osaka Bldg., Hibiya
TOKYO



AD. 52



SHISEIDO

Manufacturers of Highest Grade Toilet Preparations

PRODUCTS:

PERFUMES, TOILET WATER, FACE CREAMS, POWDER &
ROUGE, HAIR TONIC, BRILLANTINE, TOILET SOAPS,
DENTAL CREAM, TOOTH BRUSHES, ETC.

Orders and Inquiries Attended to Promptly



SHISEIDO COMPANY, LTD.

Telegraphic Address:
"SHISEIDO"
Tokyo

HEAD OFFICE: GINZA, TOKYO

Over 70 Branches in All Parts of the Japanese Empire

Codes Used:
Western Union 5-Letter
Bentley's

AD. 53

Telegraphic Address: "SALEHOUSE"

Codes: All Standard Codes

SALE & CO., LTD.

EXPORTERS & IMPORTERS
FINANCE, INVESTMENT and INSURANCE

Head Office:

14, Marunouchi 2-chome, Kojimachi-ku, Tokyo

EXPORTS:

All Canned Food Products, Lumber and General Merchandise

(Brands: Musketeer, Fusiya, Taiyo, etc.)

IMPORTS:

Machinery, Equipment and Materials for the Canning Industry

Crude Oil, Fuel Oil, Diesel Oil, Lubricating Oil

General Merchandise

NAKAJIMA AIRCRAFT CO., LIMITED

—————
KIYOICHI NAKAJIMA

PRESIDENT

—————
TOKYO

AD. 54

ŠKODA

PRAHA · CZECHOSLOVAKIA



— PRODUCE AMONG OTHER —

PRODUCTS OF OUR METALLURGICAL
WORKS Large Castings and Forgings - Ships-
Parts - Shafts - Gears - Transmission - Parts - Special
Steel etc.

COMPLETE EQUIPMENT for Sugar Factories-
Distilleries also for Absolute Alcohol - Breweries-
Refrigerating Plants - Gasworks - Electric Power
Plants - Rolling Mills etc.

STEAM TURBINES AND MACHINES - DIE-
SEL AND GAS ENGINES - ELECTRICAL
GENERATORS AND MOTORS - LOCOMO-
TIVES - MOTOR AND DIESEL MOTOR CARS -
DIESEL ROAD ROLLERS - OTHER MACHINES

Representative

H A R B I N

POST OFFICE BOX NO. 274

TOOLS & MACHINE-TOOLS

SALE:

ANDREWS & GEORGE, TOKYO

AD. 55