

6231

Catalogue

2nd ed. 1874

To the West

Wash. D.C.



1905

BAY STATE NURSERIES

Windsor H. Wyman

North Abington, Massachusetts

---

This is not a Retail Catalog, but is designed for Private Gardeners and owners of Large Estates, who buy nursery stock in quantity.

Our prices are reasonable because we sell directly to the consumer.

**We have no agents.** To our old customers we wish to express our appreciation of their many kind and encouraging words and large confidence, which an ever-increasing business convinces us that we enjoy.

We invite all our patrons to visit us the coming season, and it will give us pleasure to show them about one hundred acres of clean, healthy and well-grown stock as can be found in America.

In the future, as in the past, we shall aim to merit the confidence of all who place their orders with us.

**Our motto is:** Best Stock, Reasonable Prices, Square Dealing,—Value for Value.

## THE PACKING SEASON.

The spring packing and shipping season usually opens here about the 1st of April and continues into the month of May. Evergreens may be shipped with safety until the middle of May. In the autumn we usually commence digging and packing the first week in October, and continue until the freezing of the ground, say middle to end of November.

### DIRECTIONS FOR SHIPPING.

*Parties ordering are requested to state explicitly the mode of conveyance by which they desire their stock forwarded.*

*When no route is designated, we exercise our judgment; but in no case do we assume any responsibility after packages are shipped, unless for our own mistakes. When losses occur by detention, claims should at once be made on the forwarder.*

## INSPECTOR'S CERTIFICATE ACCOMPANIES EVERY SHIPMENT.

### CONDITIONS OF SALE.

**First.**—The articles on the following list will be furnished at the annexed prices only when the quantity specified shall be taken. Five hundred will be furnished at the thousand rate; fifty at the hundred rate; and five at the rate per ten. *Single plants at double the rate per hundred.*

**Second.**—While we exercise the greatest care to have all Trees, Shrubs and Plants genuine and reliable, and hold ourselves prepared to replace, on proper proof, all that prove untrue, *we do not give any warranty, expressed or implied*; and in case of any error on our part, it is mutually agreed between the purchaser and ourselves that we shall not at any time be held responsible for a greater amount than the original price of the goods. **No complaints will be considered that are not made within ten days after receipt of stock.**

**Third.**—The prices annexed include packing and conveyance to freight station or express office, except in the bailing of large shade trees, for which we charge cost of labor and material.

Our terms are cash, unless by special agreement. We can ship by express C. O. D., when desired, with charges for collection added to the bill,—provided 20 per cent. of the amount of the order accompanies the same as a guarantee. Said guarantee will be required only from parties with whom we have no business acquaintance. **All bills remaining unpaid December 1st in fall and June 1st in spring, will be subject to sight draft without further notice.**

## QUICK TRANSPORTATION TO NEW YORK AND BOSTON.

Shipments to New York points, leaving here at noon, travel by Fall River Line steamers, arriving in New York at seven o'clock the following morning, and are promptly forwarded to consignee.

Goods for Boston points leave here in the evening and are delivered in Boston by N. Y. N. H. & H. R. R. the following morning. We have forwarding agents in both cities who see that no delay occurs in the delivery of our goods.

# Ornamental Department.

## Deciduous Trees.

Under this head we include both upright and drooping forms of trees which shed their foliage in winter. For the convenience of the planter in making selection, we designate the approximate height at maturity by use of the following letters:—

Lg. Trees that attain a height of 50 feet or more.

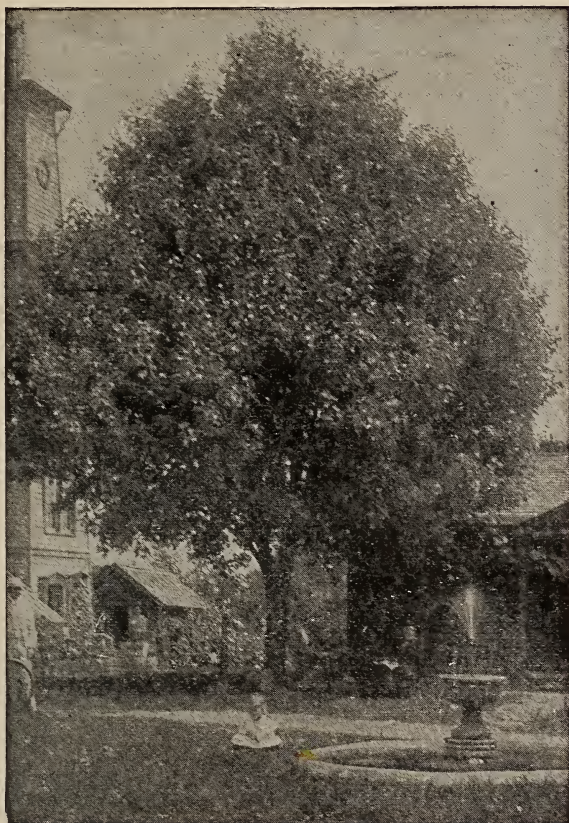
Med. Trees that attain a height of 25 to 50 feet.

Sm. Trees that attain a height of 10 to 25 feet.

In this list we have included only those varieties which have been thoroughly tested and found worthy of general cultivation in our climate. Our trees have been several times transplanted and are furnished with a perfect root system.

	Each	Per 10	Per 100
<b>ACER—Maple.</b>			
<b>A. campestris.</b> English Cork-bark Maple. Sm. Dense growth, with peculiar corky bark.			
5 to 6 feet .....	\$.50	\$4 00	
6 to 7 feet .....	.60	5.00	
<b>A. dasycarpum.</b> Silver-leaved Maple. Lg. Foliage light green with silvery reverse. Of rapid growth.			
8 to 10 ft.....	.50	4.00	\$35.00
10 to 12 ft.....	.60	5.00	45.00
Specimens 15 to 18 ft., \$1.50 to \$2.50 each.			
<b>A. d. var. Wierii laciniatum.</b> Wier's Cut-leaved Silver Maple. Med. Pendulous branches and deeply cut foliage.			
8 to 10 ft.....	.75	6.00	50 00
10 to 12 ft.....	1.25	10.00	75.00
Specimens 12 to 15 ft., \$2.00 to \$3.00 each.			
<b>A. Negundo.</b> Ash-leaved Maple. Lg. Growth rapid; form irregular and spreading.			
10 to 12 ft.....	.50	4.00	35.00
12 to 15 ft.....	1.00	7.50	
<b>A. Pennsylvanicum.</b> Striped Maple. Med. Striped bark; broad, deep green foliage.			
4 to 5 ft.....	.75		
5 to 6 ft.....	1.00	9.00	
<b>A. platanooides.</b> Norway Maple. Lg. Broad, dark green foliage. Adapted for street and sea-shore planting.			
8 to 10 ft.....	.75	6.00	50.00
10 to 12 ft.....	1.25	10.00	90.00
12 to 15 ft.....	1.75	15.00	100.00
Specimens 3 to 4 inch diameter, \$3.00 to \$5.00 each.			
<b>A. p. var. Schwedlerii.</b> Schwedler's Purple-leaved Maple. Lg. Foliage bright crimson changing to purplish green.			
8 to 10 ft.....	1.00	9.00	
Specimens 12 to 15 ft., \$2.00 to \$5.00 each.			

	Each	Per 10	Per 100
A. <i>polymorphum</i> . Japan Maple. Sm. Cheerful green foliage, changing to crimson in autumn. 3 ft.....	\$1.00	\$9.00	
A. <i>polymorphum</i> var. <i>atropurpureum</i> . Japanese Blood-leaved Maple. Sm. Of dwarf, shrubby habit; foliage blood-red. 2½ to 3 ft., specimens .....	2.50	20.00	
A. <i>pol.</i> var. <i>atro. dissectum</i> . Cut-leaved Purple Japan Maple. Sm. Fine cut foliage, form of above. 2 ft .....	2.50		



ACER PLATANOIDES—NORWAY MAPLE

A. <i>pseudo-platanus</i> . Sycamore Maple. Med. to Lg. Thick, deep green foliage.			
8 to 10 ft .....	.75	6.00	
10 to 12 ft.....	1.00	9.00	
Specimens 12 to 15 ft, \$1.50 to \$3.00 each.			
A. <i>p. p.</i> var. <i>purpurea</i> . Purple-leaved Sycamore Maple. Med. 8 to 10 ft.....	1.25	10.00	

	Each	Per 10	Per 100
<b>A. rubrum.</b> Scarlet Maple. Lg. Scarlet flowers in early spring; dense foliage; gorgeous color in Autumn. 8 to 10 ft.....	\$1.00	\$7.50	
<b>A. saccharinum.</b> Sugar or Rock Maple. Lg. Clean, upright habit; dense shade. Splendid street tree. 8 to 10 ft.....	.60		
10 to 12 ft.....	1.00	9.00	\$80.00
12 to 15 ft.....	1.50	12.00	100.00
Specimens 2½ to 4 inches caliper. \$2.00 to \$6.00 each.			
<b>A. spicatum.</b> Mountain Maple. Med. Leaves rough and broad; low habit.			
3 to 4 ft.....	.50	4.00	
4 to 5 ft.....	.75	5.00	
5 to 6 ft.....	1.00	7.50	
<b>A. Tataricum.</b> Tartarian Maple. Med. A low-branched tree of shrubby growth.			
5 to 7 ft.....	.75	6.00	
<b>ÆSCULUS—Horse-Chestnut.</b>			
<b>Æ. Hippocastanum.</b> Common Horse-Chestnut. Lg. Flowers single white, tinged with red. 7 to 8 ft.....	1.00	7.50	
8 to 10 ft.....	1.50	12.50	
<b>Æ. H. var. rubicunda.</b> Red-flowering Horse-Chestnut. Med. Deep red flowers.			
4 to 5 ft.....	1.00	7.50	
<b>AILANTHUS—Tree of Heaven.</b>			
<b>A. glandulosa.</b> Med. Immense tropical-like foliage. 6 to 8 ft.....	.50	4.00	
8 to 10 ft.....	.75	6.00	
<b>ALNUS—Alder.</b>			
<b>A. glutinosa.</b> Common Alder. Med. A rapid grower, desirable for seashore planting.			
6 to 8 ft....	.50	4.00	
8 to 10 ft.....	.75	6.00	
<b>A. glutinosa var. imperialis.</b> Imperial Cut-leaf Alder. Med. Fern-like foliage of great beauty. 6 to 8 ft.....	.75	6.00	
8 to 10 ft.....	1.00	7.50	
<b>AMELANCHIER—Mespilus, or Juneberry.</b>			
<b>A. Botryapium.</b> Shad-bush. Med. Showy white flowers in April. 3 to 4 ft.....	.50	4.00	
<b>ARALIA—Angelica Tree.</b>			
<b>A. pentaphylla.</b> Five leaved Aralia. (See Shrubs.)			
<b>A. spinosa.</b> Hercules' Club. Sm. Immense leaves, clusters of small white flowers.			
3 to 4 ft.....	.50	4.00	35.00
4 to 5 ft.....	.75	6.00	50.00
<b>BETULA—Birch.</b>			
<b>B. alba.</b> European White Birch. Lg. Of rapid growth, silvery white bark.			
6 to 8 ft....	.50	4.00	
8 to 10 ft.....	.75	6.00	
10 to 12 ft.....	1.00	7.50	
<b>B. alba var. atropurpureum.</b> Purple leaf Birch. Med. Foliage deep purple.			
3 to 4 ft.....	.60	5.00	
4 to 5 ft.....	1.00	7.50	

	Each	Per 10	Per 100
<b>B. alba var. laciniata.</b> Cut-leaved Weeping Birch. Lg. Deeply cut foliage, white bark, drooping habit. 6 to 8 ft.....	\$1.50	\$10.00	
<b>B. alba var. pendula Youngii.</b> Young's Weeping Birch. Sm. Umbrella form. 6 to 7 ft.....	2.00	17.50	
<b>B. lenta.</b> Sweet or Black Birch. Lg. A symmetrical tree of rapid growth. 6 to 8 ft.....	.60	5.00	
<b>B. lutea.</b> Yellow Birch. Lg. Yellow bark peeling off in layers. 8 to 10 ft.....	.60	5.00	
10 to 12 ft.....	1.00	7.50	
<b>B. nigra.</b> Red or River Birch. Lg. Glossy foliage, shaggy buff-colored bark. 8 to 10 ft.....	.75	6.00	
10 to 12 ft.....	1.00	9.00	
<b>B. papyracea.</b> Paper or Canoe Birch. Lg. Upright habit of growth with broad foliage. 6 to 8 ft.....	.60	5.00	
8 to 10 ft.....	.90	7.50	
<b>B. populifolia.</b> American Gray Birch. Md. Our native Birch, common in New England. 6 to 8 ft.....	.50	4.00	
8 to 10 ft.....	.75	6.00	
<b>CARPINUS—Hornbeam.</b>			
<b>C. Americana.</b> Hornbeam. Med. Resembles the Beech. 4 to 5 ft.....	.50	4.00	
5 to 6 ft.....	.75	6.00	
<b>CARYA—Hickory.</b>			
<b>C. alba.</b> Shell-bark Walnut. Lg. A valuable nut tree. 2 to 3 ft.....	.75	5.00	
3 to 4 ft.....	1.00	7.50	
<b>CASTANEA—Chestnut.</b>			
<b>C. Americana.</b> American Sweet Chestnut. Lg. One of our best native nut trees. 5 to 6 ft.....	.50	4.00	\$35.00
6 to 8 ft.....	.75	6.50	
8 to 10 ft.....	1.00	8.50	
<b>C. vesca.</b> Spanish Chestnut. Lg. Fruit much larger than above 3 to 4 ft.....	.75		
4 to 5 ft.....	1.00		
<b>CATALPA—Indian Bean.</b>			
<b>C. Bungei.</b> Bunge's Catalpa. Sm. Dense, globular formed head. 5 to 7 ft., 2 yr. heads.....	1.25	10.00	
<b>C. speciosa.</b> Western Catalpa. Med. A rapid growing tree with large leaves and great panicles of white flowers. 6 to 8 ft.....	.60	5.00	40.00
8 to 10 ft.....	.90	7.50	
<b>CERASUS—Cherry.</b>			
<b>C. Japonica var. rosea pendula.</b> Japanese Rose flowering Weeping Cherry. Sm. The best weeping variety. 5 to 6 ft., 2 yr. heads.....	2.00	17.50	
<b>C. Rexi flora plena.</b> Sm. A fine double, white flowering variety. 4 to 5 ft.....	.75	6.50	
<b>C. Sieboldii rubra plena.</b> Sm. Semi-double flowers, white tinged with red. 4 to 5 ft.....	.75	6.50	

	Each	Per 10	Per 100
<i>C. serotina</i> . Wild Black Cherry. Med. Bearing strings of white flowers in May. 7 to 9 ft.....	\$.75	\$6.50	
<b>CERCIS—Judas Tree, or Red Bud.</b>			
<i>C. Canadensis</i> . American Judas Tree. Med. The hardiest and largest growing form. 3 to 4 ft.....	.50	4.00	
4 to 5 ft.....	.75	6.00	
<i>C. Japonica</i> . Japan Judas Tree. Sm. A dwarf tree or bush similar to above. 2 to 3 ft.....	.50	4.00	
<b>CHIONANTHUS—Fringe Tree.</b>			
<i>C. Virginica</i> . White Fringe. Sm. Large, glossy foliage, racemes of pure white flowers in June. 3 to 4 ft.....	.50	4.00	
4 to 5 ft.....	.75	6.00	
<b>CLADRASTIS—Yellow Wood.</b>			
<i>C. tinctoria</i> , syn. <i>Virgilia lutea</i> . Med. Of moderate growth, foliage light green. Long, drooping racemes of white flowers. 4 to 5 ft.....	.75	6.00	
6 to 8 ft.....	1.25	10.00	
<b>CORNUS—Dogwood.</b>			
<i>C. florida</i> . White flowering Dogwood. Sm. Large white flowers in May, followed by crimson fruit. Scarlet foliage in Autumn. 3 to 4 ft.....	.40	3.50	
4 to 5 ft.....	.60	5.00	
<i>C. f. var. flore rubro</i> . Red flowered Dog- wood. Med. Bright red flowers. Blooms young. 3 to 4 ft.....	1.50	12.50	
<b>CRATÆGUS—Thorn.</b>			
<i>C. Azarolus</i> var. <i>Carriereii</i> . Sm. Deep green glossy foliage, flowers white; fruit scarlet. 5 to 6 ft.....	.75	6.00	
<i>C. coccinea</i> . American White Thorn. Med. Large foliage, white flowers in May. 3 to 4 ft.....	.40	3.50	\$30.00
4 to 5 ft.....	.60	5.00	
5 to 6 ft.....	.75	6.00	
<i>C. Crus-galli</i> . Cockspur Thorn. Sm. Long thorns, glossy foliage, scarlet fruit. 2 to 3 ft.....	.35	3.00	25.00
3 to 4 ft.....	.50	4.00	
<i>C. Fortuneii</i> . Sm. A valuable new variety. 3 ft.....	.50	4.00	
<i>C. mollis</i> . Sm. Tree with stout, short thorns. Flowers red. 2 to 3 ft.....	.40	3.50	
<i>C. nitida</i> . Sm. Another new variety recent- ly introduced. 3 to 3½ ft.....	.50	4.00	
<i>C. Oxyacantha</i> . Common Hawthorn. Sm. 3 to 4 ft.....		2.50	20.00
4 to 5 ft.....	.40	3.50	
<i>C. Oxy. coccinea flore pleno. Paulii</i> . Paul's Double Scarlet Thorn. Sm. Flowers bright carmine red. 4 to 5 ft.....	.75	6.00	
<i>C. Oxy. alba flore pleno</i> . Double White Thorn. Sm. Double white flowers. 4 to 5 ft.....	.75	6.00	



	Each	Per 10	Per 100
<b>CYTISUS—Golden Chain.</b>			
C. Laburnum. Med. Drooping racemes of yellow flowers, in June.			
5 to 6 ft. ....	\$ .75	\$6.00	
<b>FAGUS—Beech.</b>			
F. ferruginea. American Beech. Lg. One of our finest native trees.			
3 to 4 ft. ....	.75	6 00	
4 to 5 ft. ....	1.00	9.00	
F. sylvatica. European Beech. Lg. Of darker bark and foliage than above.			
3 to 4 ft. ....	.60	5.00	
4 to 5 ft. ....	.90	7.50	
F. s. var. heterophylla. Fern-leaf Beech. Sm. A tree of round habit, fern-like foliage.			
4 to 5 ft. ....	1.25	10.00	
F. s. var. pendula. Weeping Beech. Lg. A remarkably picturesque tree.			
5 to 6 ft. ....	2.00	17.50	
F. s. var. purpurea. Purple-leaf Beech. Med. Deep purple foliage, changing to purplish green. 6 to 7 ft. ....	1.25	10.00	
F. s. var. purpurea Riversii. River's Purple Beech. Med. Darker foliage and more compact than above. 5 to 6 ft. ....	1.50	12.50	
<b>FRAXINUS—Ash.</b>			
F. Americana. American White Ash. Med. A well-known native tree.			
8 to 10 ft. ....	.50	4.00	
10 to 12 ft. ....	.75	6.00	
<b>GLEDITSCHIA—Honey Locust.</b>			
G. triacanthos. Honey Locust. Med. A rapid growing tree with strong thorns. Used as hedges. 3 to 4 ft. ....		2.00	15.00
<b>GYMNOCLADUS—</b>			
G. Canadensis. Kentucky Coffee Tree. Med. A fine native tree, with feathery foliage.			
5 to 6 ft. ....	.75	6.00	
<b>JUGLANS—Walnut.</b>			
J. cinerea. Butternut. Lg. A valuable nut tree. 4 to 6 ft. ....	.60	5.00	
J. nigra. Black Walnut. Lg. A native species of great size and majestic habit.			
6 to 8 ft. ....	1.00	7.50	
<b>KOELREUTERIA—</b>			
K. paniculata. Varnish Tree. Med. From China. Large panicles of yellow flowers in July. 3 to 4 ft. ....	.50	4.00	
4 to 5 ft. ....	.75	6.00	
<b>LARIX—Larch.</b>			
L. Europæa. European Larch. Lg. Compact in growth, with light-green foliage.			
3 to 4 ft. ....	.50	4.00	
4 to 5 ft. ....	.75	6.00	
<b>LIQUIDAMBAR—</b>			
L. styraciflua. Sweet Gum. Med. Leaves resemble the Maple; bark corky. A striking tree in Autumn. 2 to 3 ft. ....	.50	4.00	
3 to 4 ft. ....	.75	6.00	

	Each	Per 10	Per 100
<b>LIRIODENDRON—</b>			
L. Tulipifera. Tulip Tree. Lg. A rapid growing tree, with large glossy foliage.			
5 to 6 ft.....	\$.60	\$5.00	
8 to 10 ft.....	1.00	9.00	
<b>MAGNOLIA—Native Varieties.</b>			
M. acuminata. Cucumber Tree. Lg. Leaves very large. Flowers yellowish white.			
7 to 9 ft.....	1.00	7.50	
M. glauca. Sweet Bay. Sm. Thick, glossy foliage, sweet-scented white flowers.			
3 to 4 ft.....	.75	6.00	
4 to 5 ft.....	1.00	9.00	
<b>Chinese and Japanese Varieties.</b>			
M. conspicua. Chinese White Magnolia. Sm. The best white variety. 3 to 4 ft..	3.00	25.00	
M. Kobus. Thurber's Japanese Magnolia. Sm. Of bushy habit, small creamy-white flowers: 2 to 3 ft.....	1.25	10.00	



Example of tree covered with showy flowers. *Magnolia stellata*; hardy in New England; blooms in April.

M. Lennei. Lenne's Magnolia. Sm. Flowers dark-rose color. 3 to 4 ft.....	2.00	17.50	
M. Soulangeana. Soulange's Magnolia. Sm. Flowers are large, pink on outside, white inside. 3 to 4 ft.....	2.00	17.50	
M. speciosa. Sm. Closely resembles the above. 3 to 4 ft.....	2.00	17.50	
M. stellata. syn. Halleana. Hall's Japanese Magnolia. Dwarf and shrub-like. Flowers pure white. Blooms early. 2 to 3 ft.....	2.00	17.50	

	Each	Per 10	Per 100
<b>MORUS—Mulberry.</b>			
M. alba var. Tatarica rubra. Red Russian Mulberry. Sm. A bushy topped spreading tree. Fruit deep reddish purple. 6 to 8 ft.....	\$ .75	\$5.00	
M. alba var. Tatarica pendula. Teas' Weeping Mulberry. Sm. One of the best weeping trees. 5 to 6 ft., 2 yr. heads	1.50	12.50	
M. New American. Med. Tree of rapid growth, delicious black fruit. 5 to 7 ft.	1.00	9.00	
<b>PAULOWNIA—Empress Tree.</b>			
P. imperialis. Sm. A tropical looking tree, quite hardy. 4 to 6 ft.....	1.00	9.00	
<b>PERSICA—Peach.</b>			
P. vulgaris flore alba plena. Double White Flowering Peach. Sm. 3 to 4 ft.....	.75	6.00	
P. vulgaris flore sanguinea plena. Double Red Flowering Peach. Flowers semi-double, bright red. 3 to 4 ft.....	.75	6.00	
<b>PHOTINIA—</b>			
P. villosa. Sm. Bears clusters of white flowers in May and red berries in Autumn. Very attractive. 3 to 4 ft.....	.30	2.50	\$20.00
<b>PLATANUS—Plane.</b>			
P. orientalis. Oriental Plane. Lg. Extensively used for street and park planting. 6 to 8 ft.....	.60	5.00	40.00
8 to 10 ft.....	.75	6.00	
<b>POPULUS—Poplar.</b>			
P. alba. White or Silver Poplar. Med. Tree of rapid growth and spreading habit. Leaves glossy above and white as snow beneath. 6 to 8 ft.....	.50	4.00	
8 to 10 ft.....	.75	6.00	
P. alba var. Bolleana. Med. Resembles Lombardy in form. Bark bluish-green. Leaves dark-green, white underneath. 8 to 10 ft.....	.75	6.00	
10 to 12 ft.....	1.00	9.00	
P. balsamifera. Balsam Poplar. Med. A native species of rapid growth 10 to 12 ft.	.75	6.00	
P. fastigiata. Lombardy Poplar. Lg. Remarkable for its erect rapid growth and tall spiry form. 6 to 8 ft.....	.25	2.00	15.00
8 to 10 ft.....	.40	3.00	25.00
10 to 12 ft.....	.60	5.00	
P. monilifera. Carolina Poplar. Med. Pyramidal in form and robust in growth. 8 to 10 ft.....	.40	3.00	25.00
10 to 12 ft.....	.50	4.00	35.00
Large specimens \$1.00 to \$3.00 each.			
<b>PRUNUS Plum.</b>			
P. Pissardii. Purple-leaf Plum. Sm. Purple foliage, retaining its color until late Fall. 3 to 4 ft.....		2.50	20.00
4 to 5 ft.....	.50	4.00	
P. triloba. Double Flowering Plum. Sm. Large, double-pink flowers. Resembling roses. 3 to 4 ft.....	.75	5.00	

	Each	Per 10	Per 100
<b>PTELEA—Hop Tree.</b>			
<i>P. trifoliata.</i> Hop Tree. Med. A low tree with trifoliolate leaves. 3 to 4 ft.....		\$2.50	\$20.00
<i>P. trifoliata</i> var. <i>aurea.</i> Golden Hop Tree. Sm. One of the showiest golden-leaved trees in cultivation. 3 to 4 ft.....	\$.50	4.00	
<b>PYRUS—Flowering Crab.</b>			
<i>P. coronaria.</i> Sweet-scented Crab. Sm. A low, bushy tree, covered with rose-colored flowers in May. 3 to 4 ft.....	.75	6.00	
<i>P. malus</i> Parkmani. Parkman's Crab. A dwarf compact tree, with double rose-colored flowers. 3 to 4 ft.....	1.00	7.50	
<i>P. angustifolia.</i> Bechtel's Double Flowering Crab. Sm. Flowers double, fragrant, delicate pink. One of the best. 3 to 4 ft.	1.00	9.00	
<b>PYRUS—Sorbus. Mountain Ash.</b>			
<i>P. Americana.</i> American Mountain Ash. Med. Produces large clusters of orange colored berries. Fruits when young.			
3 to 4 ft.....	.50	4.00	
4 to 5 ft.....	.75	6.00	
<i>P. aucuparia.</i> European Mountain Ash. Med. Bears clusters of bright scarlet berries. 6 to 7 ft.....	.50	4.50	
<i>P. a. quercifolia.</i> Oak-Leaved Mountain Ash. Med. Of fine pyramidal habit. Oak-like leaves. 6 to 7 ft.....	.75	6.00	
<b>QUERCUS—Oak.</b>			
<i>Q. alba.</i> White Oak. Lg. One of the finest American trees. 5 to 6 ft.....	1.50	12.50	
<i>Q. bicolor.</i> Swamp White Oak. Lg. A native species, large leaves turning scarlet in Autumn. 6 to 8 ft.....	1.00	9.00	
<i>Q. coccinea.</i> Scarlet Oak. Lg. Of rapid growth, pyramidal outline, leaves bright scarlet in Autumn. 6 to 8 ft.....	1.50	12.50	
<i>Q. palustris.</i> Pin Oak. Lg. Foliage deep-green, finely divided. A splendid street tree. 5 to 6 ft.....	.75	6.00	
6 to 7 ft.....	1.00	8.00	
7 to 9 ft.....	1.25	10.00	
Specimens \$1.50 to \$3.00 each.			
<i>Q. Prinus.</i> Chestnut Oak. Med. Leaves resemble those of the Chestnut. 6 to 7 ft.	1.00	9.00	
<i>Q. Robur.</i> English Oak. Med. The Royal Oak of England. Of slow growth.			
5 to 6 ft.....	.75	6.00	
6 to 8 ft.....	1.00	9.00	
<i>Q. R.</i> var. <i>concordia.</i> Golden Oak. Med. One of the finest golden-leaved trees.			
4 to 5 ft.....	1.50	12.50	
<i>Q. R.</i> var. <i>fastigiata.</i> Pyramidal English Oak. Med. A form of very upright growth.			
6 to 8 ft.....	1.00	9.00	
<i>Q. rubra.</i> Red Oak. Lg. Of rapid growth, foliage purplish-red in Autumn. 5 to 6 ft.	.75	6.00	
6 to 8 ft.....	1.00	9.00	
8 to 10 ft.....	1.50	12.50	

	Each	Per 10	Per 100
<b>ROBINIA—Locust</b>			
R. Pseud-acacia. Black or Yellow Locust. Med. Produces racemes of fragrant white flowers in June. 8 to 10 ft .....	.75	5.00	
<b>SALISBURIA—Maidenhair Tree.</b>			
S. adiantifolia. Ginkgo, or Maidenhair Tree. Lg. Beautiful fern-like foliage. 6 to 8 ft ..	.75	6.00	
8 to 10 ft.....	1.00	9.00	
<b>SALIX—Willow.</b>			
S. alba. Common White Willow. Lg. 5 to 6 ft.....	.30	2.50	
6 to 8 ft.....	.50	3.50	
S. Babylonica. Weeping Willow. Lg. Long, slender branches, weeping habit. 6 to 7 ft.....	.50	4.00	
S. caprea var. pendula. Kilmarnock Weeping Willow. Umbrella-shaped tree. 4 to 6 ft., 2 yr. heads.....	.75	6.00	
S. elegantissima. Thurlow's Willow. Lg. A spreading, drooping tree, similar to Baby- lonica. 6 to 8 ft.....	.75	6.00	
S. pentandra. Laurel-leaved Willow. Med. Leaves dark glossy green. Excellent for sea-shore planting. 4 to 5 ft.....		2.50	\$20.00
5 to 6 ft.....	.40	3.00	25.00
6 to 8 ft.....	.50	4.00	
S. vitellina. Golden-barked Willow. Med. A showy variety with golden bark. Bush form. 4 to 5 ft.....		2.50	20.00
5 to 6 ft.....	.40	3.00	
<b>SASSAFRAS.</b>			
S. officinalis. Med. Foliage dark-green, oddly shaped, brilliant in Autumn. 4 to 5 ft.....	.75	6.00	
<b>SYRINGA—Lilac.</b>			
S. Japonica. Japan Tree Lilac. Sm. One of the remarkable tree lilacs of Japan. Flowers creamy-white. 3 to 4 ft.....	.50	4.50	
4 to 5 ft....	.75	6.00	
<b>TAXODIUM—Deciduous Cypress.</b>			
T. distichum. Med. Fine, feathery foliage. 4 to 5 ft.....	.50	4.50	
5 to 6 ft..	.75	6.00	
<b>TILIA—Linden.</b>			
T. Americana. American Linden or Bass- wood. Lg. A rapid growing native tree with fragrant flowers. 6 to 8 ft.....	.75	6.00	
8 to 10 ft.....	1.00	9.00	
T. Europæa. European Linden. Med. Of pyramidal growth, more compact than above. 8 to 10 ft.....	.90	7.50	
10 to 12 ft.....	1.25	10.00	
T. E. var. alba. White-leaved Linden. Med. Pyramidal in form. Light green foliage, silvery beneath. 6 to 8 ft.....	1.00	7.50	
T. E. var. laciniata. Fern-leaved Linden. Med. Red bark and twigs with deeply cut foliage. 8 to 9 ft.....	1.00	9.00	

	Each	Per 10	Per 100
<b>ULMUS—Elm.</b>			
<b>U. Americana.</b> American White Elm. Lg. Lofty and spreading, with drooping branches. 8 to 10 ft. ....	\$.75	\$6.00	
10 to 12 ft. ....	1.00	9.00	
Specimens 12 to 15 ft., \$1.50 to \$3.00 each.			
<b>U. campestris.</b> English Elm. Med. More erect and compact than above. 6 to 8 ft. ....	1.00	7.50	
<b>U. montana.</b> Scotch, or Wych Elm. Med. A fine spreading tree of rapid growth. 8 to 10 ft. ....	1.00	9.00	
<b>U. m. var. Camperdown pendula.</b> Camperdown Weeping Elm. Sm. A most picturesque drooping tree. 6 to 7 ft., 2 yr. heads. ....	1.50	12.50	
<b>U. m. var. Huntingdoni.</b> Huntingdon Elm. Med. One of the finest, rapid growing Elms known. 6 to 8 ft. ....	.75	6.00	
8 to 10 ft. ....	1.00	9.00	
10 to 12 ft. ....	1.50	12.50	
<b>VIRGILIA—See Cladrastis, page 6.</b>			

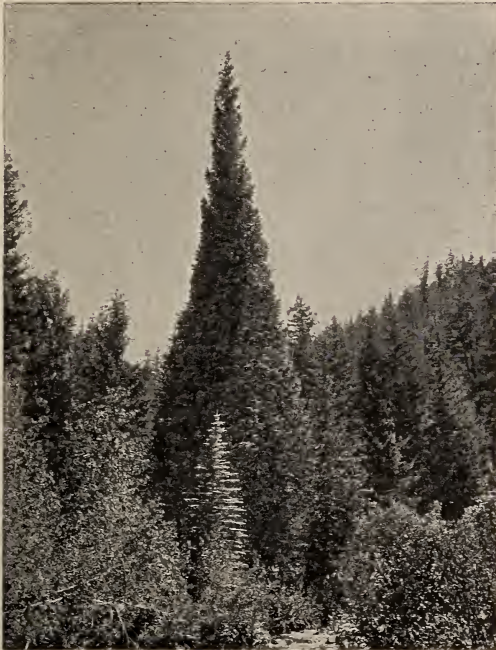
## Evergreen Trees.

We pay particular attention to the cultivation of Evergreens. The stock we offer is all thrifty and heavily rooted, having been root-pruned, and several times transplanted, thus assuring perfect success in removal.

### ABIES—Fir. (See also Picea.)

<b>A. balsamea.</b> Balsam Fir. Lg. Very hardy, foliage dark green, silvery beneath. 2 to 3 ft. ....	.50	4.00	
3 to 4 ft. ....	1.00	8.00	
<b>A. Canadensis.</b> Hemlock. (See Tsuga Canadensis, page 16.)			
<b>A. concolor.</b> White Fir. Med. A native species, with long, broad foliage, bluish above and silvery beneath. 2 to 2½ ft. ....	2.50	20.00	
2½ to 3 ft. ....	3.50	30.00	
Specimens, \$4.00 to \$8.00 each, according to size.			
<b>A. Fraseri.</b> Double Balsam Fir. Med. Similar in appearance and habit to Balsam Fir. 3 to 4 ft. ....	1.00	7.50	
4 to 5 ft. ....	1.75	15.00	
<b>A. Nordmanniana.</b> Nordman's Fir. Med. Massive dark green foliage, dark and shiny above, silvery beneath. 2 to 2½ ft. ....	2.00	17.50	
2½ to 3 ft. ....	3.00	25.00	
Specimens, 3 to 4 ft., \$3.00 to \$5.00 each.			

	Each	Per 10	Per 100
<b>BIOTA—Chinese Arborvitæ.</b>			
<b>B. orientalis var. compacta.</b> Med. Very compact in form; fresh green foliage.			
2 to 3 ft .....	\$.50	\$4.00	
3 to 4 ft .....	.75	6.00	
<b>CHAMÆCYPARIS (See Retinospora page 14.)</b>			
<b>JUNIPERUS—Juniper.</b>			
<b>J. communis.</b> Common Juniper. Sm. Our native Juniper; light, glaucous foliage.			
12 to 15 in .....	.60	5.00	



JUNIPERUS VIRGINICA.

<b>J. com. var. aurea.</b> Douglas's Golden Juniper. Sm. Habit spreading, of brilliant golden color.			
12 to 18 in .....	.50	4.00	
<b>J. com. var. Hibernica.</b> Irish Juniper. Sm. Of dense, pillar-like growth. Glaucous green foliage.			
2 to 3 ft .....	.50	4.00	
3 to 4 ft .....	.75	6.00	
<b>J. com. var. Suecica.</b> Swedish Juniper. Sm. Grows much like Irish, but more bushy in form.			
2 to 3 ft .....	.50	4.00	
3 to 4 ft .....	.75	6.00	

	Each	Per 10	Per 100
<b>J. Virginiana.</b> Red Cedar. Med. Pyramidal in form, rich green foliage.			
18 to 24 in .....	\$.30	\$2.50	\$20.00
24 to 30 in .....	.40	3.50	30.00
3 to 4 ft., specimens.....	1.00	7.50	
<b>J. V. var. glauca.</b> Blue Virginia Cedar. Med. Foliage silvery-gray. Very distinct.			
3 to 3½ ft.....	2.50	20.00	
<b>LARIX</b> —(See Deciduous Trees page 7.)			
<b>PICEA</b> —Spruce.			
<b>P. alba.</b> White Spruce. Lg. Light silvery-green foliage. Very hardy. 2 to 3 ft....	.75	5.00	
3 to 4 ft.....	1.00	7.50	
4 to 5 ft.....	1.50		
<b>P. Alcockiana.</b> Alcock's Spruce. Med. Foliage deep-green with silvery tint beneath.			
18 to 24 in.....	1.00	9.00	
24 to 30 in.....	1.50	12.50	
<b>P. Engelmanni.</b> Engelmann's Spruce. Lg. Resembles <i>Picea pungens</i> . Foliage compact and of a bluish tint. 18 to 24 in.....	.50	4.00	
24 to 30 in.....	1.00	7.50	
<b>P. excelsa.</b> Norway Spruce. Lg. A well-known variety; very hardy. 2 to 3 ft....	.60	5.00	
3 to 4 ft.....	.90	7.50	
4 to 5 ft.....	1.25	10.00	
<b>P. excelsa var. inverta.</b> Weeping Spruce, Sm. 2 to 3 ft.....	2.00	15.00	
<b>P. nigra.</b> Black Spruce. Resembles <i>Picea excelsa</i> . Compact habit.			
3 to 4 ft.....	1.00	9.00	
<b>P. polita.</b> Tiger-tail Spruce. Branches thickly set with stiff, sharp leaves.			
2 to 2½ ft.....	1.50		
2½ to 3 ft.....	2.00		
<b>P. pungens.</b> Colorado Spruce. Very hardy, branches stiff and close, foliage light-green.			
18 to 24 in.....	.75	6.00	
24 to 30 in.....	1.00	9.00	
<b>P. p. var. glauca.</b> Colorado Blue Spruce. Med. A form of <i>Picea pungens</i> , with rich, silvery-blue foliage.			
18 to 24 in.....	2.00	17.50	
24 to 30 in.....	3.50	30.00	
30 to 36 in.....	4.50	40.00	
36 to 42 in.....	6.00	50.00	
<b>P. p. var. Kosteriana.</b> Koster's Blue Spruce. Med. A form of <i>Picea pungens</i> with steel-blue foliage.			
30 to 36 in.....	4.50	40.00	
36 to 42 in.....	6.00	50.00	
<b>PINUS</b> —Pine.			
<b>P. Austriaca.</b> Austrian or Black Pine. Lg. Tree remarkably robust. Leaves long, dark-green. 2 to 3 ft. ....	.75	6.00	
3 to 4 ft.....	1.00	9.00	
<b>P. excelsa.</b> Bhotan Pine. Lg. Like White Pine, with long, silvery foliage.			
2 to 3 ft.....	1.00	7.50	



	Each	Per 10	Per 100
<b>P. Mughus.</b> Dwarf Mountain Pine. A low, spreading tree, with short leaves; branches dense.			
12 to 15 in.....	\$.60	\$5 00	
<b>P. Strobus.</b> White Pine. Lg. Our native White Pine.			
2 to 3 ft.....	.40	2.50	\$30.00
3 to 4 ft.....	.75	6.00	
4 to 5 ft.....	1.25	10.00	
<b>P. sylvestris.</b> Scotch Pine. Lg. A fine, robust growing tree, with silvery-green foliage.			
3 to 4 ft.....	.75	6.00	
4 to 5 ft.....	1.00	9.00	
<b>P. syl. var. aurea.</b> A Golden-leaved form of Scotch Pine.			
3 to 4 ft.....	.75	6.00	
<b>PSEUDO-TSUGA:</b>			
<b>P. Douglasii.</b> Douglas Spruce. Lg. From Colorado. Foliage soft, dark-green, with bluish tint.			
3 to 4 ft.....	1.25	10.00	
<b>RETINOSPORA—Japan Cypress.</b>			
<b>R. ericoides.</b> Heath-leaved Cypress. Sm. Of conical form, bluish-green in Summer and bronze in Winter.			
12 to 18 in.....	.30	2.50	
18 to 24 in.....	.50	4.00	
<b>R. filifera.</b> Thread branched Japan Cypress. Med. Slender, string-like, drooping foliage.			
2 to 3 ft.....	1.00	9.00	
3 to 4 ft.....	2.00	15.00	
Specimens, \$3.00 to \$5.00 each.			
<b>R. obtusa.</b> Obtuse-leaved Japan Cypress. Sm. Dark fern-like foliage, distinct and beautiful.			
18 to 24 in.....	2.00	15.00	
<b>R. pisifera var. aurea.</b> Golden Japan Cypress. Med. A fine, pyramidal, bright golden form.			
3 to 4 ft.....	3.50	30.00	
<b>R. plumosa.</b> Plume-like Japan Cypress. Med. Foliage light-green and plume-like.			
2 to 3 ft.....	1.00	7.50	
3 to 4 ft.....	1.50	12.50	
<b>R. plumosa aurea.</b> A golden form of plumosa.			
2 to 2½ ft.....	1.00	9.00	
2½ to 3 ft ..	1.50	12.50	
<b>R. sphæroidea.</b> White Cedar. Med. A rapid-growing tree with light-green foliage.			
5 to 6 ft.....	1.50	10.00	
<b>R. squarrosa.</b> Med. A Japanese form, with steel-colored foliage, which is very fine and feathery.			
2 to 3 ft.....	1.00	9.00	
3 to 4 ft.....	1.50	12.50	
Specimens \$2.00 to \$5.00 each.			

	Each	Per 10	Per 100
<b>SCIADOPITYS—Umbrella Pine.</b>			
S. verticillata. Med. A Japanese evergreen, with large, dark-green needles. Perfect in form.			
18 in. specimens .....	\$3.00		
Selected specimens 2 to 4 ft., \$4.00 to \$12.00 each, according to size.			
<b>THUYOPSIS—Cypress.</b>			
T. dolobrata. Med. Of pyramidal habit; branches somewhat pendulous.			
2 to 2½ ft. ....	1.50		
T. Standishi. Med. Also of pyramidal form. A good variety.			
2½ to 3 ft. ....	1.75		
<b>THUYA—Arbor Vitæ.</b>			
T. occidentalis. American Arbor Vitæ. Med. Of conical form and rapid growth.			
2 to 3 ft. ....	.30	\$2.50	\$20.00
3 to 4 ft. ....	.50	3.50	30.00
4 to 5 ft. ....	1.00	9.00	
T. oc. var. aurea. George Peabody's Arbor Vitæ. Med. Foliage clear, golden-yellow.			
12 to 18 in. ....	.75	6.00	
T. oc. var. globosa. Globe Arbor Vitæ. Sm. Globe-shaped form, with light-green foliage.			
18 in. ....	.50	4.00	30.00
24 in. ....	.75	6.00	50.00
T. oc. var. Hoveyii. Hovey's Golden Arbor Vitæ. Of dwarf habit; golden-green foliage.			
2 to 3 ft. ....	.50	4.00	30.00
T. oc. var. Lobbi. Foliage rich, glossy green. A splendid sort.			
2½ to 3 ft. ....	1.50	12.50	
T. oc. var. pyramidalis. Pyramidal Arbor Vitæ. Med. A compact grower, pyramidal in form.			
2 to 3 ft. ....	.50	4.00	
3 to 4 ft. ....	.75	6.00	50.00
T. oc. Sibirica. Siberian Arbor Vitæ. Med. Of dense form, heavy bluish-green foliage. Very hardy.			
2 to 2½ ft. ....	.75	5.00	40.00
2½ to 3 ft. ....	1.00	9.00	
Specimens 3 to 4 ft., \$2.00 each.			
T. oc. var. Tom Thumb. Sm. Of slow, compact growth and symmetrical habit.			
2 to 2½ ft. ....	.50	4.00	
3 to 4 ft., specimens. ....	2.00	15.00	
T. oc. var. Vervaeneana. Sm. Foliage variegated with yellow. Dense habit.			
4 ft., very heavy. ....	2.50		
5 ft., very heavy. ....	3.50		
<b>TSUGA—Hemlock.</b>			
T. Canadensis. Hemlock. Lg. One of our finest native evergreens. Valuable for specimens, mass planting and hedges.			
18 to 24 in. ....	.50	4.00	30.00
24 to 30 in. ....	.60	5.00	
3 to 4 ft. ....	1.00	9.00	
4 to 5 ft. } specimens. ....	2.00	15.00	
5 to 6 ft. } ....	3.00	20.00	

## Evergreen Shrubs.

This group contains some of our most useful plants, not only because of their evergreen foliage, but many of them are of the finest flowering shrubs.

	Each	Per 10	Per 100
<b>ANDROMEDA—</b>			
A. floribunda. Lily-of-the-Valley Tree. 3 ft. Flowers in large white panicles. Dark green foliage.			
12 to 15 in.....	\$1.50	\$12.50	
A. Japonica. 3 ft. Drooping racemes of pure white flowers.			
15 to 18 in.....	1.00	7.50	
<b>AZALEA—</b>			
A. amoena. Double purplish-red flowers in May. Useful for edging.			
10 to 12 in.....	.60	5.00	
<b>BERBERIS—Barberry.</b>			
B. aquifolia, or Mahonia aquifolia. Ash-berry. 3 ft. Glossy, green, holly-like leaves. Yellow flowers in May.			
12 to 18 in.....	.30	2.50	\$20.00
B. ilicifolia. Holly-leaved Barberry. 3 ft. Very dark, spiny leaves, like holly.			
12 to 15 in.....	.30	2.50	20.00
<b>BUXUS—Boxwood.</b>			
B. sempervirens. Tree Box. 4 ft. Close-growing, oval, dark, shining foliage.			
12 to 18 in.....	.60	5.00	
18 to 24 in.....	1.00	7.50	
B. sempervirens var. nana. Dwarf Box. The well-known dwarf edging plant.			
4 to 5 in. \$35.00 per M.....		6.00	5.00
We can also furnish Box Plants in Standard and Pyramid shape in various sizes from 2 to 6 ft. Prices on application.			
<b>COTONEASTER—</b>			
C. microphylla. Small-leaved. Prostrate, densely-branched shrub, with deep-green leaves and scarlet berries.			
2 to 15 in.....	.25	2.00	15.00
<b>DAPHNE—</b>			
D. Cneorum. Garland Flower. A pretty, dwarf evergreen shrub, rosy-lilac flowers in May. 6 to 10 in.....	.75	6.00	
<b>EUONYMUS—</b>			
E. radicans. Creeping Euonymus. Glossy, dark-leaved vine, or spreading shrub.			
Strong 3 yr. plants.....	.25	2.00	15.00
E. radicans var. variegata. Variegated Creeping Euonymus. Distinctly variegated with white, yellow and pink shades.			
Strong 3 yr. plants.....	.25	2.00	15.00
<b>HEDERA—Ivy.</b>			
H. helix. English Ivy. A well-known vine, with broad, glossy, dark leaves.			
3 yr. plants.....	.40	2.50	20.00

	Each	Per 10	Per 100
<b>ILEX—Holly.</b>			
I. <i>Crenata</i> . Japanese Holly. Small box-like foliage. Very bushy.			
12 to 18 in . . . . .	\$1.00	\$7.50	
I. <i>glabra</i> . Inkberry. Oval, dark foliage, small flowers, black berries.			
12 in. clumps. . . . .	.75	6.00	
I. <i>opaca</i> . American Holly. A well known native evergreen, with crimson berries.			
2 to 3 ft . . . . .	1.00		
3 to 4 ft . . . . .	2.00		
Specimens, \$3.00 to \$5.00 each.			
<b>KALMIA—Laurel.</b>			
K. <i>latifolia</i> . Mountain Laurel. A most beautiful native shrub, with pink and white flowers in clusters.			
18 in. clumps. . . . .	1.50	10.00	
18 to 24 in. clumps. . . . .	2.00		
2 to 3 ft. specimens, \$3.00 to \$5.00 each.			
By the carload, 250 to 300 plants, prices on application.			
<b>LEUCOTHOE—</b>			
L. <i>Catesbæi</i> . Drooping Andromeda. Foliage thick, heavy and pointed. Spikes of white flowers in early Spring.			
12 to 18 in . . . . .	.60	5.00	
<b>MAHONIA—(See Berberis page 16).</b>			

## Rhododendrons.

Perhaps the most useful of all broad-leaved evergreens; rich in foliage effect and magnificent in flower results. For mass planting nothing can compare with *R. maximum* at so small a cost. We make a specialty of furnishing these in carload lots, having supplied one estate with nearly 15,000 plants the past year. The hybrid varieties we offer have all been tested and found hardy in the climate of Boston and vicinity.

	Each	Per 10
Rhododendron <i>Catawbiense</i> . One of our native varieties, producing lilac-purple flowers in June.		
18 to 24 in . . . . .	1.00	7.50
R. <i>Catawbiense</i> var. <i>grandiflora</i> . A variety used extensively for forcing.		
Satin-lilac in color, 2 ft. . . . .	2.00	15.00

### HYBRID RHODODENDRON CATAWBIENSE.

These plants are well budded and perfect in form. Price . . . . .	2.00	15.00
Extra size 24 to 30 in. . . . .	2.50	20.00
Abraham Lincoln—Rosy crimson.		
Album <i>elegans</i> —Large white.		
Album <i>grandiflorum</i> —White and blush.		
Atror-sanguineum—Cherry red.		
Boule de Neige—Pure white.		
Caractacus—Rich, purplish crimson.		
Delicatissimum—White and blush.		
Everestianum—Rosy lilac, crimped.		

- General Grant—Crimson pink.
- Giganteum—Large, rosy crimson.
- Gloriosum—Large, blush.
- H. H. Hunnewell—Rich crimson.
- Lady Clermont—Rosy scarlet.
- Mme. Carvalho—Clear white.
- Mrs. Millner—Dark red.
- President Lincoln—Rosy purple.
- Roseum elegans—Fine rose.
- Roseum grandiflorum—Dark rose.



RHODODENDRON MAXIMUM.

**Rhododendron maximum.** Great Laurel. A strong grower. Best variety for massing. Flowers rosy-white to white.

	Each	Per 10	Per 100
2 to 3 ft., bushy.....	\$1.50	\$10.00	\$80.00
3 to 4 ft., " .....	2.00	15.00	100.00
4 to 5 ft, " .....	3.00	25.00	
5 to 6 ft., " .....	5.00	40.00	

Specimen plants 5 to 7 ft., \$8.00 to \$10.00 each.

By the carload 250 to 300 plants, prices on application.

**YUCCA filamentosa.** Adam's Needle. An evergreen shrub with long, pointed leaves, producing panicles of large, ivory-white flowers in mid-summer.

Strong 3 yr. old plants.....	2.50	20.00	
------------------------------	------	-------	--

## Deciduous Shrubs.

Our aim is to produce everything in flowering shrubbery that is hardy and worthy of cultivation in our climate.

The figure and month following the name indicates the ultimate height and time of flowering.

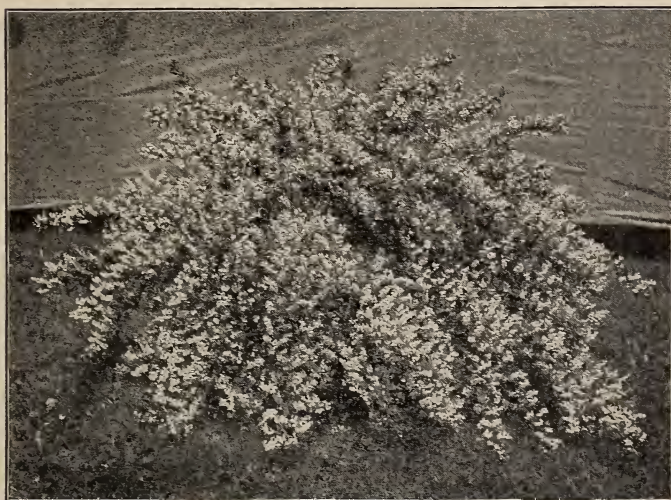
	Each	Per 10	Per 100
ALTHÆA. (See Hibiscus, page 23.)			
AMELANCHIER. (See Deciduous Trees, page 4.)			
AMORPHA—Bastard Indigo.			
A. fruticosa. False Indigo. 6 ft. June. Flowers deep purple.			
3 to 4 ft. ....		\$2.50	\$20.00
4 to 5 ft. ....		3.00	
AMYGDALUS—Almond. (See Prunus sinensis, page 26.)			
ANDROMEDA—			
A. racemosa. 5 ft. May. Clusters of pure white flowers.			
2 to 3 ft. ....	.75	2.50	
ARALIA—Angelica Tree.			
A. pentaphylla. Five leaved Aralia. 5 ft. Deep, glossy-leaved foliage.			
3 to 4 ft. ....		2.50	20.00
4 to 5 ft. ....		3.00	25.00
A. spinosa. (See Deciduous Trees, page 4.)			
ARONIA (See Pyrus, page 28.)			
AZALEAS—Native Sorts.			
A. arborescens. Fragrant White Azalea. 3 to 8 ft. July. White flowers tinged with rose; fragrant.			
18 to 24 in. ....	.75	6.00	
A. calendulacea. Flame Azalea. 6 ft. June. Flowers orange-red.			
18 to 24 in. ....	.75	6.50	
A. nudiflora. Pinxter Flower. 6 to 8 ft. May. Deep pink flowers.			
18 to 24 in. ....	.75	6.50	
A. viscosa. White Swamp Honeysuckle. 6 ft. June and July. Fragrant rosy-white flowers.			
2 to 3 ft. ....	.75	6.00	
AZALEAS—Ghent and Mollis varieties.			
A. Ghent. Flowers in great profusion, ranging from white to deep crimson. Named varieties 18 to 24 in. ....	1.00	9.00	
A. mollis. A race of excellent habit, producing flowers in all shades of red, white, yellow and orange. Separate colors, 18 to 24 in. ....	1.00	7.50	
BACCHARIS—Groundsel Tree.			
B. halimifolia. 8 ft. September. Valuable for sea-shore planting.			
2 to 3 ft. ....		2.50	20.00

	Per 10	Per 100
<b>BERBERIS—Barberry.</b>		
<b>B. Thunbergii.</b> Japanese Barberry. 3 to 4 ft. June. Of low, spreading growth, used extensively for hedging. Bright scarlet berries through the Winter. Foliage brilliant in Autumn.		
12 to 18 in.....	\$2.00	\$15.00
18 to 24 in.....	2.50	20.00
24 to 30 in.....	3.00	25.00
<b>B. vulgaris.</b> Common Barberry. 5 ft. June. Upright grower, yellow flowers followed by dark red berries.		
18 to 24 in.....	2 00	15.00
2 to 3 ft.....	2.50	20.00
<b>B. vulgaris var. purpurea.</b> Purple Barberry. 5 ft. Deep purple foliage all summer.		
18 to 24 in.....	2.00	15.00
2 to 3 ft.....	2.50	20.00
<b>BENZOIN—Spice Bush.</b>		
<b>B. odoriferum.</b> 6 ft. April. Yellow flowers appearing before the leaves.		
2 to 3 ft.....	2.50	20.00
<b>BUDDLEIA—</b>		
<b>B. variabilis.</b> 3 to 8 ft. A handsome new species, with fragrant lilac and orange-yellow flowers.		
2½ to 3 ft.....	3.00	
<b>BAYBERRY—(See Myrica, page 27.)</b>		
<b>CALYCANTHUS—Sweet Shrub.</b>		
<b>C. floridus.</b> Carolina Allspice. 5 ft. Fine, glossy foliage and pineapple scented chocolate colored flowers all Summer.		
18 to 24 in.....	2.50	20.00
24 to 30 in.....	3.00	25.00
<b>CARAGANA—Siberian Pea.</b>		
<b>C. arborescens.</b> 8 ft. June. A very hardy, tall growing shrub. Small yellow flowers.		
3 to 4 ft.....	4.00	
<b>CARYOPTERIS—Blue Spirea.</b>		
<b>C. Mastacanthus.</b> 2 to 3 ft. August. Violet-blue flowers.		
18 in. bushy.....	2.50	20.00
<b>CEANOTHUS—New Jersey Tea.</b>		
<b>C. Americanus.</b> Red-Root. 3 ft. June. Numerous small, white flowers in dense panicles.		
18 to 24 in.....	2.50	
<b>CEPHALANTHUS—Button Bush.</b>		
<b>C. occidentalis.</b> 5 ft. July. Has curious balls of white blossoms and long stems.		
2 to 3 ft.....	2.50	20.00
<b>CERCIS—(See Deciduous Trees, page 6.)</b>		
<b>CHIONANTHUS—(See Deciduous Trees, page 6.)</b>		
<b>CLETHRA—White Alder.</b>		
<b>C. alnifolia.</b> Sweet Pepper Bush. 5 ft. July to September. Fragrant white flowers throughout the season.....		
	2.50	20.00
<b>COLUTEA—Bladder Senna.</b>		
<b>C. arborescens.</b> 6 to 8 ft. July. Of compact growth. Yellowish-red flowers, followed by red bladder-shaped pods.		
3 to 4 ft.....	2.50	20.00

	Per 10	Per 100
<b>COMPTONIA—Sweet Fern.</b>		
<i>C. asplenifolia.</i> 2 to 3 ft. A native with fern-like, dark-green foliage.		
18 to 24 in. ....	\$2.50	\$20.00
<b>CORCHORUS—(See Kerria, page 25.)</b>		
<b>CORNUS—Cornel or Dogwood.</b>		
<i>C. alba.</i> Siberian Dogwood. 5 to 6 ft. Good, clean foliage, bright red branches.		
2 to 3 ft. ....	2.00	15.00
3 to 4 ft. ....	2.50	20.00
<i>C. alternifolia.</i> Alternate-leaved Cornel. 5 to 6 ft. May. A very distinct and graceful form.		
2 to 2½ ft. ....	2.50	
<i>C. circinata.</i> Round-leaved Dogwood. 8 ft. June. White flowers followed by blue berries.		
2 to 3 ft. ....	3.50	
<i>C. florida.</i> (See Deciduous Trees, page 6).		
<i>C. Mas. or mascula.</i> Cornelian Cherry. 8 ft. April. Showy yellow flowers, followed by scarlet berries.		
2 to 3 ft. ....	2.00	15.00
3 to 4 ft. ....	2.50	20.00
<i>C. paniculata.</i> Gray Dogwood. 6 ft. July and August. One of our best native shrubs. White berries in Fall.		
2 to 3 ft. ....	2.50	20.00
3 to 4 ft. ....	4.00	30.00
<i>C. sanguinea.</i> Red Ozier. 6 to 8 ft. June. Greenish-white flowers, followed by black fruit.		
3 to 4 ft. ....	2.50	20.00
<i>C. s. var. elegantissima variegata.</i> 4 to 5 ft. Leaves variegated with silver and green.		
2 to 3 ft. ....	3.50	30.00
<i>C. sericea.</i> Silky Dogwood. 6 to 8 ft. Purple-twigged. Flowers in June and July. Bluish berries in Autumn.		
3 to 4 ft. ....	2.50	20.00
<i>C. stolonifera.</i> Spreading Cornel. 4 to 5 ft. Has scarlet bark and a low, spreading habit.		
2 to 3 ft. ....	2.50	20.00
<i>C. s. var. aurea.</i> Golden-bark Dogwood. A striking contrast when planted with the red-barked variety.		
2 to 3 ft. ....	2.50	20.00
<i>C. Spætheii.</i> 4 ft. Foliage variegated with pale yellow. 2 to 3 ft. ....	4.00	
<b>CORYLUS—Filbert.</b>		
<i>C. maxima var. purpurea.</i> Purple Hazel. 4 ft. The best purple-leaved shrub.		
2 to 3 ft. ....	4.00	
<b>CYDONIA—Japan Quince.</b>		
<i>C. Japonica.</i> Fire Bush. 5 to 6 ft. May. Deep scarlet flowers of good size, followed by large fruit. 18 to 24 in. ....	2.50	20.00
2 to 3 ft. ....	2.50	
<b>DECODON—</b>		
<i>D. verticillatus.</i> Swamp Loose-Strife. 2 to 8 ft. A spreading shrub-like vine, with lanceolate leaves; rose-purple flowers. A native thriving in swampy ground.		
Strong 4 yr. plants ....	2.50	20.00



	Per 10	Per 100
DESMODIUM—(See Lespedeza, page 25.)		
DEUTZIA—		
D. crenata. 6 ft. June. Showy, white-tinged pink flowers in close spikes.		
2 to 3 ft.....	\$2.00	\$15.00
3 to 4 ft.....	2.50	20.00
D. crenata var. <b>Pride of Rochester.</b> 6 ft. June. Flowers double white, tinged with pink.		
2 to 3 ft.....	2.00	15.00
3 to 4 ft.....	2.50	20.00
D. crenata var. <b>Waterer.</b> 5 to 6 ft. A new form of D. crenata. Color, fine pink.		
4 to 5 ft.....	3.00	



DEUTZIA GRACILIS

D. gracilis. Dwarf Deutzia. 3 ft. May and June. Low, dense, globular habit; pure white flowers.		
12 to 18 in.....	2.00	15.00
18 to 24 in.....	2.50	20.00
D. gracilis var. <b>Rosea.</b> 3 ft. June. Flowers light-pink. New. 18 to 24 in.....	3.00	25.00
D. <b>Lemoinei.</b> Hybrid. 3 to 4 ft. Snow-white flowers, larger than gracilis.		
2 to 3 ft.....	2.50	20.00
DIERVILLA - Weigela.		
D. arborea. <b>grandiflora.</b> 6 ft. July. Of erect growth; foliage very large. Flowers pale yellow.		
3 to 4 ft.....	3.50	
D. <b>candida.</b> White Weigela. 6 ft. June to August. Flowers pure white.		
2 to 3 ft.....	3.00	25.00
D. <b>hybrida.</b> var. <b>Desboisi.</b> 6 ft. An abundant bloomer, flowers deep rose.		
2 to 3 ft.....	3.00	

	Per 10	Per 100
D. h. var. <i>Eva Rathke</i> . 5 ft. Flowers throughout the season. Color, deep carmine red. 2 to 3 ft.....	\$4.00	
D. h. var. <i>Lavallei</i> . 5 ft. Has bright, deep-crimson flowers. 2 to 3 ft.....	3.50	
D. rosea. Rose-colored Weigela. 5 ft. June. A standard variety, with rose-colored flowers. 2 to 3 ft.....	3.00	\$25.00
D. r. var. <i>amabilis</i> . 6 ft. Pink flowers in Autumn. Quite distinct. 2 to 3 ft.....	3.00	
D. r. var. <i>floribunda</i> . 5 ft. Flowers dark-red. 2 to 3 ft.....	3.50	
D. r. var. <i>variegata</i> . A dwarf-growing form with variegated leaves. Flowers deep-rose. 2 to 3 ft.....	3.00	25.00
D. <i>trifida</i> . 2 to 3 ft. Of dwarf habit. Loose yellow flowers in July. 12 to 18 in.....	3.50	
<b>ELÆAGNUS—Oleaster.</b>		
E. <i>longipes</i> . Japanese Oleaster. 8 ft. July. Foliage dark-green above, silvery beneath. Flowers yellowish-white; scarlet fruit. 2 to 2½ ft.....	2.50	20.00
E. <i>hortensis</i> . European Oleaster. 10 ft. Distinct silvery foliage. Excellent for seashore planting. 2½ to 3 ft.....	3.50	
<b>EUONYMUS—Strawberry Tree.</b>		
E. <i>Americanus</i> . Strawberry Bush. 4 ft. June. Slender-growing, shining foliage. Deep scarlet berries. 2 to 3 ft.....	2.50	20.00
E. <i>Europæus</i> —Spindle Tree. 10 to 15 ft. May. Foliage deep-green, turning to crimson. Orange-scarlet fruit. 4 to 5 ft. specimens.....	4.00	35.00
E. <i>nanus</i> . 2 ft. July. A prostrate form, with narrow, shining leaves. Excellent for rockery. 18 to 24 in.....	2.50	20.00
<b>EXOCHORDA—Pearl Bush.</b>		
E. <i>grandiflora</i> . 10 ft. May and June. Loose clusters of pure-white flowers. 2½ to 3 ft.....	3.00	
<b>FORSYTHIA—Golden Bell.</b>		
F. <i>Fortunei</i> . 8 ft. April. Spreading bush, with dark, shining foliage. Deep yellow flowers. 3 to 4 ft.....	2.50	20.00
	4.00	
F. <i>intermedia</i> . 10 ft. April. Of erect growth, resembling <i>suspensa</i> . 3 to 4 ft.....	2.50	20.00
F. <i>suspensa</i> . Weeping Golden Bell. 8 ft. April. Long, pendulous branches; golden-yellow flowers. 3 to 4 ft.....	2.50	20.00
	4.00	
F. <i>viridissima</i> . 6 ft. May. Bush-like habit, lighter flowers, blooming later than other varieties. 3 to 4 ft.....	3.00	25.00
<b>HAMAMELIS—Witch Hazel.</b>		
H. <i>Virginiana</i> . 8 ft. November. One of our best late-flowering shrubs. Good foliage. 2½ to 3 ft.....	2.50	20.00

	Per 10	Per 100
<b>HIBISCUS—Althæa or Rose of Sharon.</b>		
H. Syriacus. var. alba plena. Double White Althæa.		
2½ to 3 ft.....	\$3.00	\$25.00
3 to 4 ft.....	5.00	
H. S. Boule de Feu. Double Red Althæa.		
2½ to 3 ft.....	3.00	25.00
3 to 4 ft.....	5.00	
H. S. Coerulea. Double Blue Althæa. 2½ to 3 ft..	3.00	
H. S. purpurea plena. Double Purple Althæa.		
2½ to 3 ft.....	3.00	25.00
H. S. var. Jeanne d'Arc. Double Pure White.		
2½ to 3 ft.....	3.50	
H. S. var. Lady Stanley. Double Blush White.		
2½ to 3 ft.....	3.00	
H. S. var. variegatis flore plena. Double Varie- gated Flowered Althæa. 2½ to 3 ft.....	3.00	
H. S. var. flore plena folis variegata. Variegated leaved Althæa. 2 ft.....	3.50	30.00
H. S. totus albus. Single Pure White.		
18 to 24 in . . . . .	3.50	
H. Tree Form. In colors. 4 to 5 ft.....	10.00	
<b>HIPPOPHÆ. Sea Buckthorn.</b>		
H. rhamnoides. Foliage grayish-white; likes the vicinity of salt water. 2½ to 3 ft . . . . .	2.50	20.00
<b>HYDRANGEA—</b>		
H. arborescens. 4 ft. June. A native sort with flat corymbs of white flowers. 2½ to 3 ft . . . . .	2.50	
H. nivea or radiata. 4 ft. July. Heart-shaped dark foliage; white flowers. 2½ to 3 ft . . . . .	2.50	20.00
H. paniculata. 7 ft. September. A single form of paniculata grandiflora. 3 to 4 ft.....	2.50	20.00
H. pan. var. grandiflora. 8 ft. September. White flowers in immense panicles. 2 to 2½ ft.....	2.50	20.00
2½ to 3 ft.....	3.00	25.00
H. pan. var. grand. Tree Form. 4 to 5 ft . . . . .	7.50	
<b>HYPERICUM—St. John's Wort.</b>		
H. aureum. Foliage bluish-green, large golden- yellow flowers in July and August.		
2 to 3 ft.....	2.50	20.00
H. densiflorum. 2 to 3 ft. A low-growing sort, with minute bright yellow flowers in August.		
2 to 2½ ft.....	2.50	20.00
H. Moserianum. 2 ft. August. Very large yellow flowers. Needs protection. 12 to 18 in.....	2.50	20.00
<b>ILEX—Deciduous Holly.</b>		
I. verticillata. Winter Berry. 6 ft. June. Its bright scarlet berries remain late in the winter.		
2 to 3 ft . . . . .	2.50	20.00
<b>ITEA—</b>		
I. Virginica. 4 ft. June. A native shrub, with white flowers. 2 to 3 ft.....	2.50	
<b>KERRIA—Corchorus (Globe Flower).</b>		
K. Japonica. 4 ft. Single yellow flowers all Summer.		
2 to 2½ ft.....	2.50	20.00
K. Jap. var. flore plena. 4 ft. Very double, deep yellow flowers. 2 to 2½ ft.....	3.00	25.00
K. Jap. var. floris variegata. 2 to 3 ft. Leaves variegated with silver. Dwarf habit; valuable for edging. 12 to 15 in . . . . .	2.50	20.00

	Per 10	Per 100
<b>LESPEDEZA—</b>		
L. <i>bicolor</i> . 8 ft. August. A graceful shrub, with small, violet purple flowers. Strong 2 yr. plants.	\$2.50	\$20.00
L. <i>Sieboldi</i> . syn. <i>Desmodium Japonica</i> . 3 ft. September. Rosy purple flowers in long drooping racemes. 3 yr. plants.	2.50	
<b>LAURUS—(See Benzoin, page 21.)</b>		
<b>LIGUSTRUM—Privet.</b>		
L. <i>Ibota</i> . 5 ft. July. Very hardy, flowers white, fragrant, followed by black berries. 2 to 3 ft.	2.50	20.00
3 to 4 ft.	3.00	25.00
L. <i>Ibota</i> var. <i>Regelianum</i> . 4 ft. More spreading than <i>Ibota</i> . Very hardy. 18 to 24 in. bushy.	2.50	20.00
L. <i>ovalifolium</i> . California Privet. 8 ft. Very broad, oval shaped leaves. 2 to 3 ft.	1.00	6.00
2½ to 3 ft.	1.50	8.00
L. <i>vulgare</i> . European Privet. 6 ft. Showy white flowers; black berries. 2 to 3 ft.	1.50	10.00
L. <i>media</i> . 5 ft. A Japanese Privet similar to <i>vulgare</i> . 2 to 3 ft.	1.50	10.00
<b>LONICERA—Bush Honeysuckle.</b>		
L. <i>Alberti</i> . Siberian Honeysuckle. 2 ft. July. Leaves narrow, bluish color on slender, drooping branches. 15 to 18 in.	2.00	
L. <i>fragrantissima</i> . 5 ft. April. Fragrant pink flowers in early Spring. 2 to 3 ft.	2.50	20.00
L. <i>Morrowii</i> . 6 ft. July. Vigorous habit; yellow flowers; crimson fruit. 3 to 4 ft.	2.50	20.00
L. <i>Ruprechtiana</i> . 6 ft. May. Pure white flowers, followed by orange-red fruit. 3 to 4 ft.	2.50	20.00
L. <i>Tatarica</i> . Tartarian Honeysuckle. 8 ft. June. Bears a profusion of pink flowers. 2½ to 3 ft.	2.50	20.00
L. <i>T.</i> var. <i>alba</i> . 5 ft. June. Pure white, fragrant flowers. 2½ to 3 ft.	2.50	20.00
L. <i>T.</i> var. <i>grandiflora</i> . 6 ft. June. Bright red flowers. 2 to 3 ft.	2.00	15.00
<b>LYCIUM—Matrimony Vine.</b>		
L. <i>Barbarum</i> . Box Thorn. 10 ft. A very hardy shrub with slender, spiny stems. Fruit, orange-red. 2 to 3 ft.	2.50	20.00
<b>MYRICA—Bayberry.</b>		
M. <i>cerifera</i> . Candleberry. 4 ft. May. A low, spreading shrub, handsome foliage. 18 to 24 in.	2.50	20.00
M. <i>gale</i> . Bayberry. 5 ft. A native shrub effective in masses. 18 to 24 in.	2.00	15.00
<b>PHILADELPHUS—Syringa or Mock Orange.</b>		
P. <i>coronarius</i> . Mock Orange. 10 ft. June. Pure white, highly-scented flowers. 3 to 4 ft.	2.50	20.00
P. <i>c.</i> var. <i>aureus</i> . Golden Syringa. 5 ft. July. Of dense growth, with golden yellow foliage. 12 to 18 in.	2.50	20.00
18 to 24 in.	3.50	30.00

	Per 10	Per 100
<b>P. Gordonianus.</b> 8 ft. July. Blooms late; large fragrant flowers. 3 to 4 ft. ....	\$2.50	\$20.00
<b>P. grandiflorus.</b> Large-flowered Syringa. 10 ft. June. Very large, showy flowers. 3 to 4 ft. ....	2.50	20.00
<b>PHOTINIA</b> —(See Deciduous Trees, page 9.)		
<b>POTENTILLA</b> —Cinquefoil.		
<b>P. fruticosa.</b> 3 ft. July and September. Yellow flowers borne all Summer. 18 to 24 in. ....	2.00	15.00
2 to 3 ft. ....	2.50	20.00
<b>PRUNUS</b> —Plum and Almond.		
<b>P. maritima.</b> Beach Plum. 4 ft. April. White flowers followed by crimson fruit. 2 to 3 ft. ....	2.50	20.00
<b>P. Pissardi.</b> (See Deciduous Trees, page 9.)		
<b>P. sinensis var. alba plena.</b> Dwarf White flowered Almond. 4 ft. May. Double white flowers. 2½ to 3 ft. ....	3.00	25.00
<b>P. s. var. rosea plena.</b> Double Pink Almond. Double rose-colored flowers. 2½ to 3 ft. ....	3.00	25.00
<b>P. triloba.</b> Double-flowering Plum. 5 ft. May. Large double-pink flowers resembling roses. 2½ to 3 ft. ....	3.50	
<b>PTELEA</b> —(See Deciduous Trees, page 9.)		
<b>PYRUS</b> —Chokeberry.		
<b>P. arbutifolia.</b> 6 ft. May. White flowers fol- lowed by red fruit. 2 to 3 ft. ....	3.00	25.00
<b>P. floribunda.</b> Red Chokeberry. 6 ft. May. Crim- son flowers in great profusion. 3 to 4 ft. ....	5.00	
<b>P. fl. var. nigra.</b> Black Chokeberry. 8 ft. Simi- lar to above with black fruit. 2 to 3 ft. ....	3.00	25.00
<b>RHAMNUS</b> —Buckthorn.		
<b>R. cathartica.</b> Common Buckthorn. 6 ft. July. White flowers and black fruit. 3 to 4 ft. ....	2.50	20.00
<b>R. Frangula.</b> 10 ft. June. A handsome lawn shrub. 2 to 3 ft. ....	2.50	
<b>RHODOTYPUS</b> —White Kerria.		
<b>R. kerrioides.</b> 5 ft. Syringa-like flowers all sum- mer. 2½ to 3 ft. ....	2.50	20.00
<b>RHUS</b> —Sumac <sup>o</sup>		
<b>R. aromatica.</b> Fragrant Sumac. 5 ft. May. Flow- ers greenish-white; leaves lobed. 2 to 3 ft. ....	3.00	25.00
<b>R. copallina.</b> Shining Sumac. 4 ft. August. Lus- trous foliage; greenish-white flowers. 2 to 3 ft. ....	2.50	20.00
<b>R. cotinus.</b> Purple Fringe or Smoke Tree. 10 ft. June. Curious, mist-like flowers. 2½ to 3 ft. ....	2.50	20.00
5 to 6 ft. specimens ....	5.00	



KALMIA LATIFOLIA—MOUNTAIN LAUREL

	Per 10	Per 100
<i>R. glabra</i> . Smooth Sumac. 8 ft. June. Very effective in autumn with its crimson seeds and foliage. 3 to 4 ft.....	\$2.50	\$20.00
4 to 6 ft .....	4.00	30.00
<i>R. glabra</i> var. <i>laciniata</i> . Cut-leaved Sumac. 4 to 5 ft. Beautiful fern-like leaves. 2 to 3 ft .....	3.00	25.00
<i>R. typhina</i> . Staghorn Sumac. 8 ft. Most brilliant in autumn. 3 to 4 ft .....	2.50	20.00
4 to 6 ft .....	4.00	30.00
<b>RIBES—Currant.</b>		
<i>R. aureum</i> . Yellow-flowering Currant. 6 ft. May. Early yellow flowers. 2½ to 3 ft .....	2.00	15.00
<i>R. sanguineum</i> . Red-flowering Currant. 4 ft. July. Deep rose flowers. Fine shrub. 2 to 3 ft .....	2.50	20.00
<b>ROBINIA—Acacia.</b>		
<i>R. hispida</i> . Rose Acacia. 5 ft. May. Clusters of rose-colored flowers. 2 to 3 ft .....	3.00	
<b>ROSA—Rose.</b>		
<i>R. blanda</i> . 3 ft. May. A thornless variety. Single, rose colored flowers. 18 to 24 in.....	2.00	15.00
24 to 30 in.....	2.50	
<i>R. Carolina</i> . Swamp Rose. 6 ft. June to September. Wild rose, with single pink flowers. 18 to 24 in.....	1.50	10.00



KALMIA LATIFOLIA—MOUNTAIN LAUREL

IN ARNOLD ARBORETUM

	Per 10	Per 100
<i>R. glabra</i> . Smooth Sumac. 8 ft. June. Very effective in autumn with its crimson seeds and foliage. 3 to 4 ft. ....	\$2.50	\$20.00
4 to 6 ft. ....	4.00	30.00
<i>R. glabra</i> var. <i>laciniata</i> . Cut-leaved Sumac. 4 to 5 ft. Beautiful fern-like leaves. 2 to 3 ft. ....	3.00	25.00
<i>R. typhina</i> . Staghorn Sumac. 8 ft. Most brilliant in autumn. 3 to 4 ft. ....	2.50	20.00
4 to 6 ft. ....	4.00	30.00
<b>RIBES—Currant.</b>		
<i>R. aureum</i> . Yellow-flowering Currant. 6 ft. May. Early yellow flowers. 2½ to 3 ft. ....	2.00	15.00
<i>R. sanguineum</i> . Red-flowering Currant. 4 ft. July. Deep rose flowers. Fine shrub. 2 to 3 ft. ....	2.50	20.00
<b>ROBINIA—Acacia.</b>		
<i>R. hispida</i> . Rose Acacia. 5 ft. May. Clusters of rose-colored flowers. 2 to 3 ft. ....	3.00	
<b>ROSA—Rose.</b>		
<i>R. blanda</i> . 3 ft. May. A thornless variety. Single, rose-colored flowers. 18 to 24 in. ....	2.00	15.00
24 to 30 in. ....	2.50	
<i>R. Carolina</i> . Swamp Rose. 6 ft. June to September. Wild rose, with single pink flowers. 18 to 24 in. ....	1.50	10.00

	Per 10	Per 100
24 to 30 in. ....	\$2.00	\$15.00
<i>R. lucida</i> . 3 ft. May to July. A native with rosy-pink flowers. 18 to 24 in. ....	2.00	15.00
24 to 30 in. ....	2.50	20.00
<i>R. lucida</i> var. <i>Alba</i> . 3 ft. May to July. A new variety with pure white flowers. 24 to 30 in. ....	4.00	30.00
<i>R. multiflora</i> . Japan. 8 ft. June. Good foliage. Pyramidal corymbs of pure white flowers. 18 to 24 in. ....	2.00	15.00
<i>R. nitida</i> . 3 ft. June. Native, dwarf; flowers bright pink. 12 to 18 in. ....	2.00	15.00
18 to 24 in. ....	2.50	20.00
<i>R. repens</i> . 8 ft. June. A European variety with white flowers. 3 to 4 ft. ....	3.00	25.00
<i>R. rubiginosa</i> . Sweetbriar Rose. 6 ft. June. Highly-scented foliage; pink flowers. 18 to 24 in. ....	2.00	15.00
2 to 3 ft. ....	2.50	20.00
3 to 4 ft. ....	3.00	25.00

Hybrid Sweet Briar.

Amy Robsart. Deep rose. ....	3.50
Flora McIvor. White, blushed. ....	3.50
Lady Penzance. Soft tint of copper. ....	3.50
Lord Penzance. Fawn, passing to yellow. ....	3.50
Meg. Merrilles. Gorgeous crimson. ....	3.50

	Per 10	Per 100
<i>R. rubrifolia</i> . Red-leaved Rose. 4 ft August. Reddish-purple leaves throughout the season. Deep red flowers.		
2 to 3 ft. ....	\$2.50	\$20.00
3 to 4 ft. ....	4.00	
<i>R. rugosa</i> . Japanese Rose. 5 ft. Rich, leathery foliage, oddly wrinkled, single red flowers, attrac- tive fruit.		
18 to 24 in. ....	2.50	20.00
24 to 30 in. ....	3.00	25.00
<i>R. rug. var. alba</i> . 5 ft. Single white flowers. ....		
18 to 24 in. ....	2.50	20.00
24 to 30 in. ....	3.00	25.00

#### Rosa Rugosa Hybrids.

Blanch Double de Coubert. Double white. ....	5.00	
Comte d'Eprenesnil Double red. ....	5.00	
Mme. Georges Bruant. Paper-white, Double. .	3.00	25.00
<i>R. setigera</i> . Prairie Rose. 5 ft. July. Single, deep- rose flowers in masses.		
3 to 4 ft. ....	2.00	15.00
4 to 5 ft. ....	2.50	20.00
<i>R. spinosissima</i> . Scotch Rose.		
<i>R. s. var. grandiflora</i> .....	5.00	
<i>R. s. var. listifolia</i> .....	5.00	
<i>R. s. var. Myriacantha</i> .....	5.00	
<i>R. s. var. picta</i> .....	5.00	
<i>R. Wichuraiana</i> . Japanese Trailing Rose. A low, training species, with white flowers. Strong 3 yr. plants, 2 to 4 ft. ....	2.50	20.00

#### Wichuraiana Hybrids.

Manda's Triumph. Double white. ....	2.50	
Pink Roamer. Single Pink .....	2.50	
South Orange Perfection. Double blush-pink .....	2.50	
Universal Favorite. Double Rose .....	2.50	
<b>RUBUS</b> —Bramble.		
<i>R. odoratus</i> . Flowering Raspberry. 6 ft. Large foliage, rosy-purple flowers all Summer.		
2½ to 3 ft. ....	2.00	15.00
<b>SAMBUCUS</b> —Elder.		
<i>S. Canadensis</i> . Common Elder. 8 ft. June. Reddish- purple berries in Fall.		
3 to 4 ft. ....	2.50	20.00
<i>S. nigra</i> . European Elder. 6 ft. July. Purple blackberries.		
3 to 4 ft. ....	2.50	15.00
<i>S. nigra var. aurea</i> . Golden Elder. 6 ft. A large golden-leaved form.		
3 to 4 ft. ....	2.50	20.00
<i>S. nigra. var. laciniata</i> . Cut-leaved Elder. 5 ft. Elegantly cut leaves.		
2½ to 3 ft. ....	3.50	
<i>S. racemosus</i> ; syn. <i>pubens</i> . Panicles of white flow- ers in Spring, followed by bright, red berries.		
3 to 4 ft. ....	3.00	25.00
<b>SNOWBERRY</b> —(See <i>Symphoricarpus</i> , page 32).		



	Per 10	Per 100
<b>SPIRÆA—Meadowsweet.</b>		
S. arguta. New. 4 ft. Closely allied to S. Thunbergi. 2 to 3 ft.....	\$2.50	\$20.00
S. Billardi. 4 ft. July. Pink flowers produced from June until Fall. 2 to 2½ ft.....	2.50	20.00
S. Bumalda. 3 ft. Bears rosy-pink flowers in compact corymbs all Summer. 18 to 24 in.....	2.00	15.00
24 to 30 in.....	2.50	20.00
S. B. var. Anthony Waterer. An improved form of S. Bumalda. Bright crimson flowers throughout the season. 18 to 24 in.....	2.50	20.00
S. callosa. Fortune's Spiræa. 4 ft. Rosy-red flowers in clusters nearly all Summer. 2½ to 3 ft.....	2.00	15.00
S. callosa var. alba. A dwarf form with showy white flowers. 18 to 24 in.....	2.00	15.00
S. callosa var. superba. Quite dwarf, pinkish-white flowers throughout the season. 18 to 24 in.....	2.00	15.00
S. crispifolia. Very dwarf. Pink flowers in July and August. Excellent for edging. 10 to 12 in.....	2.50	
S. opulifolia. Nine Bark. 10 ft. June. White flowers along the stems. 4 to 5 ft.....	2.50	20.00
S. o. var. aurea. Golden Spiræa. One of our best yellow-leaved shrubs. 3 to 4 ft.....	2.50	20.00
S. prunifolia fl. pl. Bridal Wreath. 6 ft. May. Double white flowers along the slender stems. 2 to 3 ft.....	2.50	
S. Reevesii. Lance-leaved Spiræa. 4 ft. June. Narrow foliage; white flowers. 2½ to 3 ft.....	2.50	
S. sorbifolia. Ash-leaved Spiræa. 5 ft. July. Long, showy panicles of white flowers. 24 to 30 in.....	2.00	15.00
S. Thunbergi. 4 ft. May. Low-growing, rounded form. Small white flowers. Feathery foliage. 18 to 24 in.....	2.00	15.00
2 to 3 ft.....	2.50	
S. Van Houttei. 5 ft. June. The finest of all Spiræas. 2 to 3 ft.....	2.50	20.00
3 to 4 ft.....	3.50	30.00
<b>STAPHYLEA—Bladdernut.</b>		
S. colchica. 5 ft. June. A fine shrub with fragrant white flowers. 2 to 3 ft.....	5.00	
<b>STEPHANANDRA—</b>		
S. flexuosa. 4 ft. July. One of the finest Japanese shrubs. Pure white flowers. 18 to 24 in.....	2.50	20.00
24 to 30 in.....	3.00	25.00
<b>STYRAX—</b>		
S. Japonica. Flowers small, white and bell-shaped. 2 to 2½ ft.....	3.50	

	Per 10	Per 100
<b>SYMPHORICARPUS—Snowberry.</b>		
S. racemosus. 4 ft. July. Pink flowers; white, waxy berries in Autumn.		
3 to 4 ft. ....	\$2.50	\$20.00
S. vulgaris. Indian Currant. 4 ft. July. Resembles S. racemosus. Purplish-red berries.		
2½ to 3 ft. ....	2.00	15.00
<b>SYRINGA—Lilac.</b>		
S. Japonica (See Deciduous Trees, page 11.)		
S. Josikæa. 8 ft. May. Flowers bluish-purple.		
2½ to 3 ft. ....	3.00	25.00
S. Pekinensis. A large shrub with slender branches. Yellowish-white flowers.		
4 to 5 ft. ....	7.50	
S. Persica. Persian Lilac. 5 ft. May. Pale-lilac flowers, very fragrant. 3 to 4 ft. ....	3.50	
S. Persica var. alba. Resembles S. Persica, but the flowers are white. 3 to 4 ft. ....	3.50	
S. Rothomagensis. Rouen Lilac. 6 ft. June. Resembles Persian. Flowers violetblue.		
2½ to 3 ft. ....	3.00	
S. villosa. 6 ft. June. Flowers light-purple in bud, rosy-white when opened, very fragrant.		
2¼ to 3 ft. ....	3.00	25.00
S. vulgaris. Common Lilac. 10 ft. May. Fragrant purple flowers in panicles.		
2½ to 3 ft. ....	2.50	20.00
3 to 4 ft. ....	3.00	25.00
S. vul. var. alba. Common White Lilac. 10 ft. May. One of the best.		
2½ to 3 ft. ....	3.00	25.00
3 to 4 ft. ....	4.00	

#### Named Varieties.

Charles X. Leaves large and shiny. Flowers reddish-purple. 2½ to 3 ft. ....	3.50	
Frau Bertha Dammann. Large trusses of single white flowers. 2 to 2½ ft. ....	3.50	
Marie Le Gray. Single white. Valuable for forcing. 2 to 2½ ft. ....	3.50	
Michael Buchner. A dwarf grower with very double, pale-lilac flowers. 2 to 3 ft. ....	3.50	
President Grevy. A fine double variety with blue flowers. 2 to 2½ ft. ....	4.00	
Rubra de Marley. Single, rich, rosy-purple. 2 to 2½ ft. ....	3.00	
Senateur Volland. Flowers double, rosy-red. 2 to 2½ ft. ....	3.50	
Souvenir de Ludwig Spaeth. Large, single, purplish-red flowers. 2 to 2½ ft. ....	3.50	
Ville de Troyes. Large panicles of single, dark purple flowers. 2 to 2½ ft. ....	4.00	
<b>TAMARIX—</b>		
T. Africana. 6 ft. June. Feathery foliage; light pink flowers.		
3 to 4 ft. ....	2.50	20.00
T. Gallica. 8 ft. July. Very showy, pink flowers.		
3 to 4 ft. ....	3.00	25.00

	Per 10	Per 100
<b>VACCINIUM—Huckleberry.</b>		
V. <i>corymbosum</i> . Blueberry. 4 ft. May. White flowers, followed by edible fruit in August.		
2½ to 3 ft.....	\$5.00	
<b>VIBURNUM—</b>		
V. <i>cassinoides</i> . 5 ft. June. White flowers ; black-berries in Autumn.		
2 to 3 ft. ....	3.00	\$25.00
3 to 4 ft. ....	5.00	35.00
4 to 5 ft., specimens.....	10.00	
V. <i>dentatum</i> . 5 ft. June. Glossy green foliage. White flowers followed by crimson berries, turning blue in Fall. 2½ to 3 ft.....	3.50	30.00
3 to 4 ft. ....	5.00	
V. <i>lantana</i> . 6 ft. May. Large foliage, silvery underneath. Black fruit in Fall.		
2½ to 3 ft.....	3.00	25.00
V. <i>Lentago</i> . Sheep-Berry. 6 ft. May. Flowers creamy-white, very fragrant.		
3 to 3½ ft. ....	3.00	25.00
V. <i>molle</i> . Soft-leaved Viburnum. 6 ft. June. Resembles <i>dentatum</i> , but larger fruit twenty days later. Rare. 2½ to 3 ft . ....	3.00	25.00
V. <i>Opulus</i> . Highbush Cranberry. 8 ft. June. Bright scarlet berries in Fall and Winter.		
2½ to 3 ft.....	3.00	25.00
3 to 4 ft.....	4.00	
V. <i>O.</i> var. <i>sterile</i> . Common Snowball. 12 ft. May. Pendant balls of snowwhite flowers.		
3 to 4 ft.....	3.50	30.00
V. <i>O.</i> var. <i>nana</i> . Very dwarf and compact. Seldom growing above 2 ft.		
10 to 12 in.....	2.50	20.00
V. <i>plicatum</i> . Japan Snowball. 8 ft. May. Handsome foliage, pure white flowers.		
2 to 3 ft.....	3.50	30.00
3 to 4 ft.....	5.00	
V. <i>p.</i> var. <i>tomentosum</i> . Single Japan Snowball. 8 ft. May. Pure white flowers, followed by scarlet berries. 3 to 4 ft.....	3.00	25.00
4 ft. specimens.....	7.50	
<b>WEIGELA—(See Diervilla, page 23.)</b>		
<b>XANTHORRHIZA—</b>		
X. <i>apiifolia</i> . 2 to 3 ft. April. A native shrub, with attractive foliage ; racemes of plum-colored flowers.		
8 to 12 in.....	2.50	20.00

### Vines and Climbing Shrubs.

**ACTINIDIA—**

A. *arguta*. From Japan. Clear foliage ; flowers white with purple center. 4 yrs., XX..... 5.00

**AKEBIA—**

A. *quinata*. Clover-like leaves, plum-colored flowers in May. 3 yr., strong plants ..... 2.50

**AMPELOPSIS—Woodbine.**

A. *quinquefolia*. Virginia Creeper. A native vine of vigorous growth. 3 yrs., strong..... 2.00 15.00

	Per 10	Per 100
A. <i>quinquefolia</i> var. <i>Englemanni</i> . Similar to above, but will cling to any surface. 3 yrs., strong plants . . . . .	\$2.50	\$20.00
A. <i>Veitchii</i> . Japan or Boston Ivy. A well-known clinging vine of rapid growth. 2 yrs., strong . . . . .	2.00	15.00
3 yrs., extra . . . . .	2.50	20.00
<b>ARISTOLOCHIA—Birthwort.</b>		
A. <i>Sipho</i> . Dutchman's Pipe. Large, heart-shaped leaves; flowers brown, shaped like a pipe. . . . .	7.50	
<b>BIGNONIA—See Tecoma.</b>		
<b>CELASTRUS—Bittersweet.</b>		
C. <i>orbiculatus</i> . High-climbing shrub, with orange-yellow fruit. 3 and 4 yrs. . . . .	3.00	25.00
C. <i>scandens</i> . Roxbury Waxwork. Leaves glossy and fine. Fruit orange and crimson, in clusters. 3 yrs . . . . .	2.50	20.00
<b>CLEMATIS—Virgin's Bower.</b>		
C. <i>apiifolia</i> . Resembles <i>Virginiana</i> . . . . .	5.00	
C. <i>coccinea</i> . Scarlet Clematis. Flowers bell-shaped, brilliant scarlet. 3 yrs. . . . .	2.50	
C. <i>crispa</i> . Flowers singly lilac-purple, fragrant. . . . .	2.50	
C. <i>paniculata</i> . Comparatively well-known throughout New England. Small star-like flowers in great profusion. 2 yrs., strong . . . . .	2.50	20.00
3 yrs., XXX . . . . .	3.50	30.00
C. <i>Virginiana</i> . American White Clematis. A native of rapid growth. White flowers in August. 3 yrs. . . . .	2.50	20.00

## HYBRID LARGE FLOWERING CLEMATIS.

### STRONG FIELD-GROWN PLANTS.

Duchess of Edinburgh. Double-white; sweet-scented . . . . .	5.00	
Henryi. Creamy-white; large and handsome . . . . .	5.00	
Jackmani. Large, rich violet-purple. A free-bloomer; very popular . . . . .	5.00	45.00
Mme. Ed. Andre. Flowers large, bright velvety red. . . . .	5.00	
Mme. Baron Veillard. New. Flowers unique shade of soft pink . . . . .	5.00	
<b>DOLICHOS—Kuduz Vine.</b>		
D. <i>Japonica</i> . Rapid grower, bearing rosy-purple flowers in August. . . . .	2.50	
<b>EUONYMUS—(See Evergreen Shrubs, page 17.)</b>		
<b>HEDERA—Ivy. (See Evergreen Shrubs, page 17.)</b>		
<b>IPOMŒA—</b>		
I. <i>pandurata</i> . Hardy Moon Flower. White, with dark purple throat. . . . .	2.50	
<b>LONICERA Honeysuckle.</b>		
L. <i>Japonica</i> var. <i>brachypoda</i> . Chinese Evergreen Honeysuckle. Foliage dark green, fragrant yellow flowers . . . . .	2.50	20.00
L. <i>brachypoda</i> var. <i>aurea reticulata</i> . Golden Leaved Honeysuckle. Variegated foliage. . . . .	2.50	
L. <i>Japonica</i> var. <i>Chinensis</i> . Dark, purplish-green foliage, fragrant yellow flowers . . . . .	2.50	20.00
L. <i>Jap.</i> var. <i>Halleana</i> . Hall's Japan Honeysuckle. A well known sort, with fragrant white flowers, changing to yellow . . . . .	2.50	20.00
L. <i>Heckrotti</i> . Flowers rose color with yellow center. Constant bloomer. . . . .	3.50	

	Per 10	Per 100
L. Periclymenum var. Belgica. Monthly Fragrant or Dutch Honeysuckle. Red and yellow flowers, very fragrant.....	\$3.00	\$25.00
L. sempervirens. Scarlet Trumpet Honeysuckle. Bright scarlet flowers.....	2.50	
<b>MENISPERMUM—Moonseed.</b>		
M. canadense. Twining, slender vine, with small yellow flowers.....	2.50	
<b>PERIPLOCA—Silk Vine.</b>		
P. Græca. Grecian Silk Vine. Glossy green leaves, small purple flowers.....	2.50	20.00
<b>TECOMA (Bignonia)—Trumpet Vine.</b>		
T. radicans. The Scarlet Trumpet Flower.....	2.50	20.00
<b>VITIS—Grape.</b>		
V. coignetiae or "Crimson Glory" Vine. New. Very broad foliage, brilliant color in Autumn.....	2.50	
<b>WISTARIA—</b>		
W. Chinensis. Chinese Wistaria. May. Flowers in pale-blue, pendulous clusters. Fragrant.....	.75	6.00
W. C. var. alba. White flowered variety of above	.75	6.00
W. magnifica. Am. Wistaria. Bears panicles of pure lilac flowers. Fragrant . . . . .	.30	2.50
W. multijuga. From Japan. Immense panicles of deep-purple flowers,.....	.75	6.00

## Hardy Roses.

During the past few years a large number of new varieties of Roses have been introduced and sold, which have no practical value in our climate. For this reason we take great care to include in our lists only such varieties as are worthy of general cultivation.

### Brief Directions for Planting, etc.

**When to plant.**—We recommend Fall planting if position is not too exposed. Dormant plants set in the Spring should be planted early.

**Location**—Roses should be planted in an open, sunny place.

**Soil**—Roses grow well in any rich soil. A liberal amount of manure and good cultivation will improve both bloom and fragrance.

**Planting**—Plant budded Roses three inches below the bud. Press earth tightly down on the roots. Water well after planting. Mulch with coarse, strawy manure.

**Pruning**—All Roses should be more or less pruned when planted. When pruning older plants, which should be done moderately, the operation should be performed during March.

**Protection**—All Hybrid Roses give better results if protected in Winter. The use of coarse manure, litter or evergreen boughs will accomplish the purpose. It should be removed in early Spring.

### Hybrid Perpetual and Other Hardy Varieties.

Strong, field-grown 50 cts. each, \$3.50 per 10, \$25.00 per 100.

**Abel Carriere**—Rich, velvety crimson, with fiery center.

**Alfred Colomb**—Carmine red; very large and full.

**American Beauty**—Deep rose; very large; valuable for forcing.

**Anne de Diesbach**—Clear, bright rose; large and fragrant.

**Baron de Bonstettin**—Velvety maroon; large and full.

**Baroness Rothschild**—Bright pink; very large.

- Captain Christy—Delicate flesh ; darker center.  
 Clio—Large, flesh-color, center shaded with rosy-pink.  
 Coquette des Alpes—White, tinged with blush. Blooms late.  
 Countess of Oxford—Carmine red ; tinged lilac.  
 Crested Moss—Deep pink colored buds.  
 Duke of Albany—Vivid crimson, becoming darker as the flowers expand.  
 Duke of Connaught—Rosy crimson, large.  
 Duke of Edinburg—Bright crimson.  
 Fisher Holmes—Brilliant crimson.  
 General Jacqueminot—Bright, scarlet crimson.  
 Glorie de Lyonnaise—Creamy white ; tea scented.  
 Glorie de Margottin—Brilliant scarlet ; large ; fragrant.  
 Gruss an Teplitz—Scarlet, flowering during the whole Summer.  
 Harrison's Yellow—Pure yellow.  
 John Hopper—Bright rose, carmine center.  
 Jules Margottin—Carmine rose.  
 Kaiser A. Victoria—White blended with cream.  
 La France—Silvery rose. The most fragrant of hardy roses, and good Autumn bloomer.  
 Mabel Morrison—One of the best white roses.  
 Mad. Gabriel Luizet—Light, silvery pink.  
 Mad. Plantier—Pure white ; early summer bloomer.  
 Mad. Caroline Testout—Hybrid tea. Satiny pink.  
 Mad. Charles Wood—Vivid crimson.  
 Magna Charta—Pink and carmine.  
 Marchioness of Londonderry—Flowers of great size, measuring seven inches across. Color ivory white. One of the finest rosés.  
 Margaret Dickson—White, pale flesh color.  
 Marie Baumann—Brilliant carmine crimson ; large, full ; very fragrant.  
 Mrs. Jno. Laing—Soft pink, fragrant ; blooms late in Autumn.  
 M. P. Wilder—Cherry carmine.  
 Merville de Lyon—Pure white.  
 Mrs. R. G. Sharman-Crawford—Color deep rosy-pink ; flowers large and perfect ; free bloomer.  
 Paul Neyron—Deep rose ; very large.  
 Perle des Blanches—Pure white.  
 Persian Yellow—Bright yellow.  
 Prince Camille de Rohan—Deep velvety crimson.  
 Soliel d'Or—New. An exceedingly valuable hybrid, varying in color from gold and orange to reddish gold shaded with nasturtium red.  
 Souv. de la Malmaison—Bourbon. Flesh, tinted with fawn.  
 Ulrich Brunner—Cherry red. A fine rose.  
 White Baroness—Pure White.  
 White Moss—Beautiful in the bud ; pure white.

### CLIMBING ROSES.

Because of their strong climbing habit, they are most useful for training on porches and trellises, or to cover posts, fences and unsightly objects.

#### Prairie Roses.

	Per 10	Per 100
Baltimore Belle—Pale blush, turning to white ; blooms in clusters.....	\$2.50	\$20.00
Queen of Prairie—Flowers double, red, and in clusters. One of the best.....	2.50	20.00
Setigera—The Prairie Rose. Flowers single, deep rose, produced in masses through late June and July.	2.50	20.00

Ramblers.

	Per 10	Per 100
<b>Crimson Rambler</b> —Bright crimson, blooming in panicles. First grade, 3 to 4 ft.....	\$3.00	\$25.00
Extra strong plants, 4 to 5 ft.....	5.00	40.00
<b>Pink Rambler (Eyphosyne)</b> —Clear, light red.....	2.50	
<b>White Rambler (Thalia)</b> —Pure white.....	2.50	
<b>Yellow Rambler (Aglia)</b> —Light Yellow.....	3.00	25.00

New Climbers.

**Carmine Pillar**—The Butterfly Rose. Hardy climber. The flower is from three and a half to four inches across, of the brightest possible rosy carmine, and produced very abundantly. The display lasts for several weeks. Quite hardy. .... 40c. ea.; \$3.50 per 10



DOROTHY PERKINS

**Dorothy Perkins**—A hardy and vigorous climbing rose, bearing clusters of from 30 to 40 flowers like Crimson Rambler. These are a fine and striking shade of shell-pink in color, and quite double and deliciously fragrant. It is absolutely hardy, and is a cross between Rosa Wichuraiana and Mad. G. Luizet... 50c. ea.; \$4.00 per 10

**Helene**—A seedling from Crimson Rambler. Flowers larger than those of Crimson Rambler, nearly double, and borne in clusters of twenty to fifty. Color soft violet rose, yellowish white at base of petals. Anthers pure yellow and numerous. Habit fully as strong as Crimson Rambler, but more graceful. Foliage like Crimson Rambler. Hardy..... 35c. ea.; \$2.50 per 10

**Rose "Psyche"**—This rose resembles in growth and habit the famous Crimson Rambler, and its flowers, produced in immense quantity, are white, tinted with salmon rose and pink, with bright yellow at the base of the petals. It is invaluable to every rose lover..... 50c. ea.; \$3.50 per 10

# Herbaceous Department.

There is an increasing interest in the planting of hardy perennials and each year finds the popularity more firmly established.

Our collection contains over Six Hundred species and varieties, so that one, by making judicious selections, may stock the garden with plants which afford flowers in succession from early Spring until late Fall.

We send out only strong, field-grown plants, which will bloom the first season after planting.

## HARDY PERENNIAL PLANTS.

	Per 10	Per 100
<b>ACANTHUS mollis</b> (Bear's Breech)—		
A striking foliage plant. July. 3 ft.....	\$1.50	
<b>ACHILLEA</b> (Milfoil or Yarrow).		
Ægyptica—Yellow flowers. July to September. 20 in.	1.50	
millefolium roseum (Rosy Milfoil)—Rosy pink, in dense heads all summer, 18 in.....	1.20	
ptarmica fl. pl.—“The Pearl,” pure white; flowers all summer, 2 ft.....	1.00	\$ 8.00
<b>ACONITUM</b> (Monkshood, or Helmet Flower).		
autumnale—Deep blue flowers in clusters. Oct. 4 ft.	1.50	
Napellus—Large dark-blue, August to September, 2 ft.....	1.50	
uncinatum—Deep purple, June and July, 2 ft.....	1.50	
<b>ACTÆA Japonica</b> —Long spikes of clear white flowers. 18 in. June.....	1.50	
<b>AGROSTEMMA</b> (Mullein Pink).		
coronaria—Bright crimson flowers and silvery white foliage, 3 ft.....	1.50	10.00
coronaria alba—White.....	1.50	12.00
<b>ALTHÆA rosea</b> (Hollyhock)—Beginning with July their long spikes of showy flowers, in all colors, in both single and double forms are unsurpassed.		
Double varieties, all colors separate.....	1.50	12.00
Single mixed.....	1.50	12.00
Alleghany.....	1.50	12.00
<b>ALYSSUM saxatile compactum</b> (Basket of Gold, or Gold Tuft)—Valuable for rockery or border, bright yellow flowers in early summer, 1 ft.....	1.20	
<b>AMSONIA Tabernæmontana</b> —Shrub-like spikes of clear blue flowers in June, 2 ft.....	1.50	
<b>ANCHUSA Italica</b> (Alkanet)—Large heads of deep blue flowers the entire season, 4 ft.....	1.50	12.00
sempervirens.....	1.50	12.00
<b>ANEMONE Japonica</b> —Carmine, w.th yellow center. September until frost. 2 to 3 ft.....	1.50	12.00
Japonica, var. alba—White. September until frost. 2 to 3 ft.....	1.50	
Japonica var. Queen Charlotte—Semi-double, pink. Sept. until frost, 2 to 3 ft.....	1.50	
Japonica, var. Whirlwind—Pure white. Sept. until frost, 2 to 3 ft.....	1.50	12.00
<b>Pennsylvanica</b> (Pennsylvanian Windflower)—A fine plant for rockery or border, large white flowers in August, 1 ft.....	1.20	10.00



	Per 10	Per 100
pulsatilla—For border and rock-work ; deep purple. April and May, 6 in . . . . .	\$1.50	
sylvestris (Snowdrop Anemone)—Large, cup-shaped white flowers in spring, 15 in . . . . .	1.20	\$10.00
ANTHEMIS tinctoria (Chamomile)—Deep lemon-yel- low. June to August, 2 to 3 ft . . . . .	1.20	10.00
APIOs tuberosa—A native climber of vigorous habit, flowers chalkolet-red. July . . . . .	1.50	12.00
AQUILEGIA (Columbine).		
Cærulea—The true blue Rocky Mountain " Colum- bine," 2 ft . . . . .	1.50	
Californica Hybrida—Mixed colors, 2 ft . . . . .	1.20	
Canadensis—The wild honeysuckle. Scarlet and yel- low flowers . . . . .	1.50	
chrysantha—The beautiful golden-spurred " Colum- bine," flowers golden yellow, 2 ft . . . . .	1.20	10.00
chrysantha alba—A pretty white flowered form of the above, 2 ft . . . . .	1.50	12.00
Haylodgensis—A hybrid of " Cærulea," with large white corolla, 2 ft . . . . .	1.50	
Siberica . . . . .	1.50	12.00
Skinneri—A pretty yellow variety with scarlet spurs, 2 ft . . . . .	1.50	
vulgaris—Flowers in all shades of blue, white, red and purple. 3 ft. April to June . . . . .	1.50	
vulgaris alba—Large, white flowers. 3 ft. May . . .	1.50	
vulgaris fl. pl.—A fine mixture of double-flowering kinds, 2 ft . . . . .	1.50	
ARABIS albida—Fragrant white flowers in May. 6 to 9 in . . . . .		
A. alpina (Rock Cress).—Most desirable for rockery, pure white flowers in early spring . . . . .	1.20	10.00
ARMERIA formosa—Deep crimson, blooming through the summer, 1 ft . . . . .	1.50	
maritima (Thrift or Sea Pink)—A neat and compact evergreen plant with bright rosy pink flowers in summer, 1 ft . . . . .	1.20	10.00
ARTEMESIA pontica—Finely cut, gray foliage. 18 in.	1.20	
Stellariana (Old Woman)—Deeply cut silvery foli- age, dwarf . . . . .	1.00	
ASCLEPIAS incarnata—Showy head of red or purplish- red, flowers in July, 3 to 4 ft . . . . .	1.50	
tuberosa (Butterfly Weed)—Compact umbels of bril- liant orange-colored flowers, July to September, 2 ft . . . . .	1.50	12.00

## Hardy Asters.

(*Michaelmas Daisies.*)

*Field grown plants. \$1.50 per 10, \$12.00 per 100.*

- Acris—2 ft. Blue, large head, early.
- Amellus var. bessarabicus—18 in. Bluish purple, large flowers, early.
- Combe Fishacre—2 ft. Pale lavender, large flower, profuse bloomer.  
early.
- Ericoides (Heath-like Aster)—18 in. White, flowers small but ele-  
gant, late.
- Esma—18 in. White, large flower, dense head, late.

- Longifolia formosissimo*—3 ft. Rosy purple, dense head, flower medium.
- Grace*—3 ft. Bluish lavender, large flower, late.
- Isabel*—3 ft. Pale blue, flower medium, late.
- John Wood*—3 ft. White shaded pink, flower medium, early.
- Lady Trevellyn*—3 to 4 ft. Large white flowers, early.
- Lævis*—3 to 4 ft. Blue, flowers large, early.
- florabunda*—3 ft. Light blue, flowers large, late.
- Madonna*—3 ft. Pure white, large flowers, late.
- M. perennial*—2 ft. Light blue, flowers, medium early.
- Multiflorus*—18 in. Multitudes of small white flowers, late.
- Novæ-Angliæ* (New England Aster)—4 ft. Violet purple, flowers large, late.
- roseus*—3 to 4 ft. Rosy crimson, large flower, late.
- Novæ-Belgii*—3 ft. Pale blue, flower medium, late.
- Novelty*—3 ft. Deep pink, flower medium, late, very fine.
- Pulcherrima*—2 ft. Violet blue, larger flower, profuse bloomer, late.
- Puniceus*—4 to 5 ft. Very light blue, flower medium, late.
- Sawyer*—2 ft. Pink, fading to white, flower large, late.
- T. S. Ware*—3 to 4 ft. Delicate pink, very dense, late.

	Per 10	Per 100
<b>ASTILBE OR SPIRÆA Japonica</b> —Plumy spikes of pure white flowers, June and July, 2 ft. . . . .	\$1.50	
<b>BAPTISIA australis</b> (False Indigo)—Long spikes of dark blue, June and July, 2 ft. . . . .	1.50	
<b>BELLIS</b> —(English Daisy) <i>perennis</i> —Red, white and pink, double. Spring flowers, 6 in. . . . .	1.50	\$12.00
<b>BOCCONIA cordata</b> (Plume Poppy, or Tree Celandine). A noble perennial with beautiful foliage and pure white flowers, July and August, 6 to 8 ft. . . . .	1.20	10.00
<b>BOLTONIA asteroides</b> (False Chamomile)—One of the showiest of our native perennials, with pure white Aster-like flowers, 5 to 6 ft. . . . .	1.20	10.00
<i>latisquama</i> —Flowers of bright pink tinged with lavender, in great profusion during late summer, 5 to 6 ft. . . . .	1.20	10.00
<b>BUPHTHALMUM</b> (Oxeye) . . . . .		
<i>salicifolium</i> —Large yellow flowers, July, 3 to 4 ft. . . . .	1.50	
<b>CALIMERIS incisa</b> —Purple flowers with yellow center, 1 ft., July to September. . . . .	1.20	
<b>CALLIRHOE involucrata</b> —A trailing plant of vigorous growth, with rich, violet-crimson flowers in late summer, 1 ft. . . . .	1.20	10.00
<b>CAMPANULA Carpatica</b> —(Carpathian Hare-bell)—A neat, compact, low-growing species with deep blue flowers, June to September, 9 in. . . . .	1.20	10.00
<i>Carpatica</i> var. <i>alba</i> —Pure white, June to September, 9 in. . . . .	1.50	
<i>glomerata</i> —Bluish-purple, June to September, 2 ft. . . . .	1.20	
<i>latifolia</i> —Broad foliage, blue flowers, 2 ft., June and July. . . . .	1.50	
<i>macrantha</i> —A strong growing variety, 3 to 4 ft. high, bearing large, purplish-blue flowers . . . . .	1.20	10.00
<i>media</i> —In separate colors. . . . .	1.50	12.00
Mixed colors. . . . .	1.50	12.00
<i>persicifolia</i> —Tall spikes of blue flowers; June and July, 18 in. . . . .	1.20	10.00
<i>persicifolia</i> var. <i>alba</i> —White, very showy, June and July, 18 in. . . . .	1.50	12.00

	Per 10	Per 100
<i>pyramidalis</i> (The Chimney Bell-flower)—Showy spikes of blue, August and September, 2 ft. . . . .	\$1.20	\$10.00
<i>rotundifolia</i> (Blue Bells of Scotland, or Hare Bell)—The true blue-bell, with beautiful clear-blue flowers, June to August, 1 ft. . . . .	1.50	
<b>CASSIA</b> <i>Marilandica</i> (American Senna)—Large panicles of bright yellow, June to September, 4 ft. . . . .	2.00	
<b>CEDRONELLA</b> (Balm of Gilead).		
<i>cana</i> —Spikes of showy crimson flowers and aromatic foliage, July, 2 to 3 ft. . . . .	1.50	
<b>CENTAUREA</b> <i>calocephala</i> —Large dark maroon flowers on long stems. . . . .	2.00	
<i>macrocephalus</i> —Deep yellow, September, 3 ft. . . . .	1.50	
<i>montana</i> (Perennial Corn Flower)—Large purple, July and August, 1½ to 2 ft. . . . .	1.50	
<i>montana alba</i> —Pure white flowers . . . . .	1.50	12.00
<b>CATANANCHE</b> <i>cærulea</i> (Cupid's Dart)—Showy white flowers with blue eye; June to August, 2 ft. . . . .	1.50	
<b>CERASTIUM</b> <i>Boissierii</i> (Snow in Summer)—Bright, silvery foliage, with pure white flowers in June, 6 in . . . . .	1.20	
<b>CHELONE</b> —(Shell Flower).		
<i>glabra</i> —Spikes of creamy-white flowers in autumn, 2 ft. . . . .	1.50	
<i>Lyonii</i> —Heads of deep red flowers, September. . . . .	1.50	
<b>CHRYSANTHEMUM</b> <i>Hardy</i> —A variety of colors including bronze, pink, white, yellow, etc. . . . .	1.20	10.00
<i>latifolium</i> —Large flowers, pure white with yellow center . . . . .	1.50	12.00
<i>leucanthemum hybridum</i> (Shasta Daisy)—Grand, bold flowers, white with golden center . . . . .	1.20	10.00
<i>maximum</i> —A valuable cutting plant. Hardy . . . . .	1.20	10.00
<b>CIMICIFUGA</b> <i>racemosa</i> (Snakeroot, —Long spikes of pure white flowers in July, 6 ft. . . . .	2.00	
<b>CLEMATIS</b> <i>Davidiana</i> —Bell-shaped flowers of deep lavender-blue; very fragrant, August and September, 3 ft. . . . .	1.50	
<i>recta</i> —Large panicles of small fragrant white flowers 4 ft., June . . . . .	2.00	
<b>CONVALLARIA</b> —Lily of the Valley . . . . .		2.00
<i>Majalis</i> —Strong pips. . . . .		2.00
<b>COREOPSIS</b> <i>delphinifolia</i> —Yellow flowers, 3 to 4 ft. . . . .	1.50	
<i>grandiflora</i> —Larger than <i>lanceolata</i> and a continuous bloomer, 3 ft. . . . .	1.50	12.00
<i>lanceolata</i> —An old favorite, with golden yellow flowers the entire season . . . . .	1.00	8.00
<i>verticillata</i> —Lemon-yellow flowers. June to September. 18 in. . . . .	1.20	
<b>DELPHINIUM</b> (Hardy Larkspurs).		
<i>Chinensis</i> —A pretty variety, in varying color from blue to almost white. . . . .	1.20	10.00
<i>Chinensis alba</i> —White form of above . . . . .	1.50	12.00
<i>Elatum</i> (Bee Larkspur)—Blue with dark violet petals, June to August, 4 ft. . . . .	1.20	
<i>formosum</i> —Deep blue, with large white eye; one of the best and most effective hardy perennials; June and July, 3 ft. . . . .	1.00	8.00
Mixed hybrids—Containing all shades of blue, 3 to 4 ft. . . . .	1.00	8.00

	Per to	Per 100
Formosum celestinum—Light blue, very fine. June and July. 3 ft.		
DIANTHUS barbatus (Sweet William)—An old garden favorite; mixed colors. . . . .	\$1.00	\$8.00
deltoides (Maiden Pink)—A charming creeping variety, deep red, crimson eyed; flowers in May and June. . . . .	1.20	10.00
latifolius—Large heads of bright, red flowers from June to September, 8 to 10 in. . . . .	1.50	10.00
plumarius—(Scotch or Garden Pink)—Thick tufts of glaucous-green foliage, 9 in., June. . . . .	1.20	10.00
<b>Hybrid Garden Pinks.</b>		
Emperor—Rich crimson. Clover scented, finely fringed. Double . . . . .	2.00	
Her Majesty—Very large. Double, pure white. . . . .	2.00	15.00
New Mound—Bluish pink, finely fringed, fragrant. . . . .	1.50	
Mrs. Sinkins—The finest white hardy carnation grown, with intense spicy fragrance. . . . .	1.50	
DICENTRA eximia—Light pink, excellent for rock-work. June to August, 1 ft. . . . .	1.50	12.00
spectabilis (Bleeding Heart)—Long racemes of light pink flowers. May and June, 18 in. . . . .	2.00	15.00
DICTAMNUS fraxinella (Gas Plant)—Showy rose-pink flowers in June and July, 2½ ft. . . . .	1.50	
fraxinella alba—A pure white variety. . . . .	1.50	
DIGITALIS (Foxglove).		
ambigua, or grandiflora (Yellow Foxglove)—Pale yellow, veined with brown; June and July, 2 ft. . . . .	1.20	10.00
gloxiniæflora—The popular variety, ranging in color from pure white to deep pink; June and July, 3 ft. . . . .	1.50	
gloxiniæflora alba—White, June and July, 2 ft. . . . .	1.50	12.00
purpurea—(Common Foxglove) . . . . .	1.00	8.00
rosea—Beautiful rose-colored flowers, 2 ft., June and July. . . . .	1.50	
DORONICUM (Dogbane).		
excelsum—Large orange-yellow flowers, 4 inches in diameter in spring, 2 ft. . . . .	2.00	
DRACOCEPHALUM (Dragon's Head).		
altarensis—Blue flowers. July, 6 to 9 in. . . . .	1.50	
ECHINACEA purpurea (Purple Cone-flower)—Rosy purple. July to September, 3 ft. . . . .	1.20	10.00
ECHINOPS (Globe Thistle).		
ritro—Handsome thistle-like foliage, with blue flowers in August, 3 ft. . . . .	1.50	
EPIMEDIUM (Barren-wort).		
macranthum—Spikes of lilac-purple flowers. May, 1 ft. . . . .	2.50	
muschianum—Creamy white, spring, 1 ft. . . . .	1.50	
ERIGERON (Flea-bane).		
Coulteri—Large whitish flowers; 15 inches, July. . . . .	1.50	12.00
speciosus—Large violet-blue flowers in June and July, 2 ft. . . . .	1.50	
ERYNGIUM (Sea Holly).		
Amethystinum—Thistle-like heads of glistening amethystine-blue; July to September, 3 ft. . . . .	1.50	
yuccafolium—Foliage resembles yucca, flowers steel-blue; 3 ft., August. . . . .	1.50	

	Per 10	Per 100
<b>EULALIA Japonica</b> —Very popular ornamental grass, 4 ft.....	\$1.20	\$10.00
<i>Japonica</i> var. <i>gracillima</i> —Narrow foliage, 4 ft....	1.50	12.00
<i>Japonica</i> var. <i>variegata</i> —Variegated leaves, 4 ft....	1.50	12.00
<i>Japonica</i> var. <i>Zebrina</i> —New Zebra-striped grass ...	1.50	12.00
<b>EUPATORIUM ageratoides</b> (Thorough-Wort)—Dense heads of minute white flowers; August and Sep- tember, 4 ft .....	1.50	
<i>purpureum</i> —A gigantic perennial. Branching heads of purple flowers 18 in. across. 6 ft .....	1.20	10.00
<b>EUPHORBIA corollata</b> (Flowering Spurge)—Umbels of white flowers; June to August, 18 in.....	1.50	
<b>FUNKIA</b> (Plantain Lily). <i>subcordata</i> var. <i>grandiflora</i> —Pure white, July to September, 2 ft .....	2.00	15.00
<i>marginata</i> —Foliage edged with white, 2 ft.....	1.50	12.00
<i>ovata</i> —Foliage glossy, deep-green; lilac, trumpet- shaped flowers. June, 2 ft .....	1.50	
<i>variegata</i> —Leaves variegated with white .....	1.50	12.00
<b>GAILLARDIA aristata</b> (Blanket Flower)—The center is red-brown, the petals are orange, crimson and red, June to November, 2 ft .....	1.20	10.00
<i>grandiflorum</i> —Large, gorgeous flowers of crimson and gold, blooming throughout the season, 2 ft ..	1.50	12.00
<b>GALIUM boreale</b> (Red Straw)—A native plant with small, white flowers, June to August, 3 ft .....	1.20	10.00
<b>GERANIUM sanguineum</b> (Crane's Bill)—Of compact habit, with bright crimson flowers throughout the season, 18 inches.....	1.50	12.00
<i>sanguineum album</i> —White flowers, 18 in....	1.50	12.00
<b>GEUM atrosanguineum</b> - Dark red. May to August, 1 ft.....	1.50	12.00
<b>GYPSOPHILA paniculata</b> (Baby's Breath)—Large panicles of minute white flowers in August and September, 3 ft.....	1.20	10.00
<i>Stevenii</i> —Grows about 2 ft. high, of bushy spread- ing habit, choice white flowers in June and July ..	1.50	12.00
<b>HELIANTHEMUM</b> (Sun Rose). <i>hyssopifolium</i> —Large copper-colored flowers, 6 in..	1.50	
<i>vulgare citrinum</i> —Yellow, single flowers, 6 in....	1.50	
<b>HELENIUM autumnale</b> (Sneeze-Wort)—Deep golden- yellow flowers, August and September, 5 to 6 ft..	1.20	10.00
<i>Hoopesii</i> —Bright orange yellow, June to September, 3 to 4 ft .....	1.50	
<i>striatum</i> —Red and orange, September, 4 ft.....	1.50	
<b>HELIANTHUS</b> —(Hardy Sunflowers). <i>decapetalus</i> —Fine free-blooming form, with clear yellow flowers, September to frost, 5 ft ...	1.20	10.00
<i>Maximilliana</i> —A tall, graceful, single-flowered vari- ety, October, 5 to 7 ft. ....	1.20	10.00
<i>mollis</i> —Lemon yellow flowers. August and Sep- tember, 5 ft.. ..	1.20	
<i>orgyalis</i> —Medium-sized, golden yellow flowers in September, 6 ft.....	1.50	
<i>rigidus</i> —Golden-yellow, dark center, dwarf, July and August, 3 ft.....	1.50	
<b>HELIOPSIS</b> —(Orange Sunflower). <i>Pitcherianus</i> —Deep golden-yellow flower through- out the summer, 4 ft.....	1.20	

	Per 10	Per 100
<b>HEMEROCALLIS flava</b> —Orange yellow, very fragrant, May and June, 3 ft . . . . .	\$1.20	
<b>fulva</b> —Large, tawny yellow flowers, handsome foliage, 4 ft . . . . .	1.20	
<b>Sieboldi</b> —Orange colored flowers, July, 2 ft . . . . .	1.50	
<b>Thunbergiana</b> —Bright yellow, June, 3 ft . . . . .	1.50	
<b>HEUCHERA sanguinea</b> (Alum Root)—Dwarf and compact habit, flowers brilliant crimson, June to August . . . . .	1.50	\$12.00
<b>Americana</b> —A native with bright pink flowers, 18 in., July . . . . .	1.50	
<b>HIBISCUS militaris</b> —Rose-colored flowers, crimson, August, 5 ft . . . . .	1.20	10.00
<b>moscheutos</b> (Swamp Rose Mallow)—Large flowers of rosy red, 4 ft . . . . .	1.00	8.00
<b>moscheutos "Crimson Eye"</b> —Immense flowers, purest white, crimson center 4 ft . . . . .	1.20	10.00
<b>HOLLYHOCKS</b> —See <i>Althæa rosea</i> .		
<b>IBERIS sempervirens</b> (Evergreen Candytuft)—Pure white blossoms, April and May, 1 ft . . . . .	1.50	

## IRIS.

New Race of Early-Flowering

### HARDY ALPINE IRIS.—(New Hybrids.)

Suitable for edgings, rockwork, etc. Large fragrant flowers for table decoration, small vases and bowls. Bloom from March to May.

Price 30 cents each ; \$25.00 a hundred, excepting those individually priced.

NOTE: Where the description is similar, the flowers either bloom at different times, or are quite distinct.

(S) signifies Standards, or the erect petals, (F) Falls, or the drooping petals.

**Adelaide**—Bluish white, 8 in. Price 50 cts.

**Alice**—Rich yellow, self veined, brown.

**Alida**—Good white. 50 cts.

**Aureole**—Canary.

**Atlas**—S. crimson, f. deep crimson.

**Beatrice**—S. fawn, f. pale yellow. 9 in.

**Berlioz**—Rich purple. 6 in.

**Clothilde**—Purple, dwarf, open flower.

**Charmer**—Light cream.

**Curiosa**—S. sulphur, f. purple.

**David**—S. pale purple, f. claret.

**Delicata**—White and cream.

**Diana**—Sulphur white.

**Eclipse**—Red purple, white beard. 9 in.

**Eldorado**—Large flowered blue.

**Elfrida**—Yellow, orange red.

**Ernest**—Sulphur gray purple.

**Evelyn**—Sulphur, orange beard.

**Goethe**—Soft yellow, falls veined ; free.

**Grandee**—Rich purple, large and good. 50 cts.

**Haydn**—White, porcelain purple.

**Ianthe**—Primrose self ; open.

- LaPerle**—Good pale sulphur. 9 in.  
**Mazarin**—Primrose yellow.  
**Meteor**—Good purple.  
**Milton**—Yellow and orange.  
**Nimrod**—Red, 6 in. Good.  
**Norma**—Purple, early.  
**Othello**—Purple, bronze and orange.  
**Obelisque**—Rich deep purple.  
**Penelope**—Rich yellow. 9 in.  
**Queen**—Dwarf, sulphur, self, open.  
**Rosalie**—Claret. 9 in. 50 cts.  
**Rosine**—Good white. 10 in. 50 cts.  
**Sabrina**—Purple self. 9 in.  
**Scott**—Sulphur, gray falls.  
**Uranus**—Red purple, white beard.  
**Venus**—Blue, green and white.  
**Victor**—Dwarf white, large flower. 50 cts.  
**Vestal**—Primrose self. 9 in.  
**Virgo**—Purple. 9 in.  
**Vivian**—Yellowish white.  
**Voltaire**—Sulphur white, blotched falls.

### NEW CRIMEAN IRIS.

(Pumila and Olbiensis Hybrids.)

A beautiful group resembling the German Iris, only growing from nine to eighteen inches, remarkable for their vigorous growth and marvelous quantity of flowers, and most of them very fragrant.

Price 30 cts. each, \$2.50 per 10.

- Beauty**—S. rich cream yellow, f. pale yellow flushed, purple.  
**Bridesmaid**—S. white faintly stained pale lavender, f. yellow flushed with blue.  
**Canary Bird**—S. rich canary yellow, f. deep rich yellow, very large.  
**Conspicua**—S. French gray, f. sulphur, stained purple.  
**Niobe**—S. bright purple, f. very dark blue.  
**Orange Queen**—S. very bright orange, f. deep orange, flushed purple.

### GERMAN IRIS.

Choice named varieties.

Blooms in June and requires rich soil.

Price \$2.00 per 10, \$15.00 per 100.

- Abou Hassan**—S. rich yellow, f. deep yellow striped and mottled brown, 50 cts.  
**Alba**—S. and f. pure white, quite distinct.  
**Albicans**, "Princess of Wales"—Snow white one of the best.  
**Amœna Unique**—S. French white, f. violet suffused white.  
**Asiatica**—(New) S. a bright clear blue, f. a rich violet, a bold, handsome flower, one of the largest, very distinct. First-class certificate, R. H. S. (Royal Horticultural Society, London), 75 cents.  
**Atroviolacea**—S. rich purple, f. dark blue.  
**Aurea**—S. and f. rich golden yellow.  
**Augustina**—S. yellow, f. yellow and maroon.  
**Celeste**—Delicate pale lavender.  
**Cengialti**—Dark purple.  
**Darius**—S. soft rich yellow, f. lilac.  
**Flavescens**—A large, self-colored flower of a pleasing shade of primrose.  
**Florentina**—S. and f. white, slightly flushed, and very fragrant.  
**La Tendre**—Violet and lavender.  
**Madame Chereau**—S. and f. white, elegantly fringed with azure blue, one of the best.

- Pancrea—S. Bluff, f. purple.  
 Pallida Dalmatica—S. lavender, f. lavender with rose tinge.  
 Pallida speciosa—Rich, indigo blue.  
 Queen of May—A most delicate self rose pink.  
 Queen of Gipsies—S. bronze, f. purplish red.  
 Rebecca—Yellow and brown.  
 Sampson—S. golden yellow, f. maroon.

## IRIS KÆMPFERI.

(Japanese Iris.)

Requires damp soil, blooms in July.

Named Varieties—\$2.00 per 10, \$15.00 per 100.

Named Colors—\$1.50 per 10, \$12.00 per 100.

Mixed Colors—\$1.25 per 10, \$10.00 per 100.

### VARIETIES.

- Alida—Six petals; very large and decorative; pearl white, daintily but distinctly striped and penciled with blue.  
 A. L. Sherwood—Three petals, purple veined with white.  
 Bertha—Pale blue splashed with white.  
 Blue Beard—Intense blue throughout; large and full.  
 Bluebell—Purplish blue; golden yellow at base.  
 Blue Danube—Pure rich blue; yellow center.  
 Blue Jay—Three petals, self-colored, deep blush plum.  
 Bopeep—French white, veined with lavender.



IRIS KÆMPFERI—GOLD BOUND

- Delicata—Cream and white.  
 Eclipse—Pure milk white with golden center.  
 Gold Bound—Double. Pure white, base of petals golden-yellow.  
 J. C. Vaughan—Pure white.  
 Hyde Park—Reddish-purple blotched with white.  
 Mahogany—Dark red shaded maroon; very distinct.  
 Navy Blue—Rich dark blue, yellow at base.  
 Painted Lady—White, richly suffused and striped with bright pink; very showy.  
 Paragon—Double. Rich, velvet purple.



- Prof. Georgeson—Pure, rich, purple plum ; of mammoth size.  
 Pyramid—Violet-purple, veined white.  
 Robert Craig—Ash grey with violet veins.  
 Spaulding—Rosy-purple with pure white center.  
 Stella—Pure bright azure.  
 Violet Cap—Single. Purple and white.  
 William Tell—Double. White veined with indigo.

**IRIS ORIENTALS.**

BLUE (Yale color) blooms in May and June, \$1.00 per 10, \$6.00 per 100.

**IRIS PUMILA.**

Requires dry soil, blooms in April and May.

YELLOW, WHITE and BLUE, \$1.50 per 10, \$12.00 per 100.

**IRIS SIBERICA.**

\$1.50 per 10, \$12.00 per 100.

Per 10 Per 100

- Siberica—Blue.  
 Siberica Alba—White.  
 IRIS Cristata—Light blue flowers, fringed and spotted with yellow. Early. 8 in.....\$1.50  
 pseudo-corus..... 1.50 \$12.00  
 LATHYRUS latifolius (Everlasting Pea)—Clusters of seed flowers, 3 to 4 ft. June to September..... 1.50  
 LEPACHYS pinnata—Lemon colored flowers. September, 6 ft..... 1.20  
 LIATRIS (Blazing Star).  
 pycnostachya—Dense spikes of pale purple flowers. September, 3 ft..... 1.50  
 spicata—Deep purple spikes in June, 2 ft..... 1.50  
 LILIUM Lily—  
 Auratum—Gold Band..... 2.00  
 Batemanix—Orange, apricot..... 2.50  
 canadense—Yellow, spotted ..... 1.50 12.00  
 candidum—Easter Lily..... 1.50 12.00  
 elegans—Deep Maroon ..... 1.20 10.00  
 longiflorum—White..... 1.50 12.00  
 speciosum album—White..... 2.50  
 speciosum rubrum..... 2.00  
 Tigrinum—Tiger Lily..... 1.50 12.00  
 LINUM perenne (Flax)—A desirable plant either for border or rockery, growing 18 inches high, large, clear, blue flowers..... 1.50  
 LOBELIA (Cardinal Flower).  
 cardinalis—Scarlet, September, 2 ft..... 1.50  
 syphilitica—Blue, August and September, 2 ft.... 1.50 12.00  
 syphilitica alba—White, August and September, 2 ft. 1.50  
 LUPINUS nootkatensis—Blue, July and August, 4 ft. 1.50  
 perennis—Light blue, 2 ft..... 1.20  
 polyphyllus—Deep blue, May and June, 3 ft..... 1.50 12.00  
 polyphyllus albus—White, May and June, 3 ft.... 1.50  
 LYCHNIS Chalcedonica—(Maltese Cross) Large heads of vermilion. Scarlet single flowers July to September, 2 to 3 ft..... 1.00 8.00  
 plenissima semper florens—Clusters of fresh rose colored flowers, 1 ft..... 1.50  
 viscaria splendens plena—Large, double, fiery-rose color, June and July, 15 in..... 1.50

	Per 10	Per 100
<b>LYSIMACHIA clethroides</b> Pure white, July to September, 18 in.....	\$1.50	
<b>mummularia</b> —Money-wort, Deep yellow flowers, 2 in. June to September.....	1.50	\$12.00
<b>LYTHRUM roseum superbum</b> —A strong-growing, shrub-like plant 3 to 4 ft. high, producing large spikes of rose-colored flowers from July to September.....	1.50	
<b>alatum</b> —Deep purple flowers in long spikes, September and October, 4 ft.....	1.50	
<b>MALVA alcea</b> (Mallow)—Bright pink flowers all summer, 4 ft.....	1.50	
<b>moschata</b> —Fragrant flowers in clusters of a rosy tint. 2 ft., July to September.....	1.50	12.00
<b>moschata alba</b> —White, fragrant flowers.....	1.50	
<b>MONARDA didyma</b> (Oswego Tea)—Bright scarlet spikes, June and July, 2 to 3 ft.....	1.50	12.00
<b>fistulosa</b> (Bergamot)—Flowers pale red to purple rose. Blooms all summer, 3 ft.....	1.50	
<b>MYOSOTIS</b> (Forget-me-not).		
<b>palustris semperflorens</b> —An ever-blooming variety, very useful.....	1.00	8.00
<b>ÆNOTHERA</b> (Evening Primrose).		
<b>eximia</b> —Jagged leaves, with flowers 4 to 5 inches across. White changing to delicate rose, 10 inches, June to August.....	2.50	
<b>fruticosa major</b> —Deep yellow, June to September, 2 ft.....	2.00	
<b>macrocarpa</b> —Deep yellow, June to August, 1 ft....	1.50	
<b>riparia</b> —Pale yellow, 1 ft.....	1.50	
<b>speciosa</b> —A pure white variety, flowers all summer 18 in.....	1.50	
<b>Youngi</b> —Golden yellow, June to August, 2 ft.....	2.00	

## PÆONIAS.

These Pæonias are field grown, with three to five eyes.

Price 35 cts. each, \$3.00 per 10, \$25 per 100, unless otherwise noted.

Extra large clumps 75 cts. to \$1.00 each.

### Double Varieties.

- Alba Perfecta.** Pure white, extra fine.
- Amabilis grandiflora**—White, fringed petals, sweet.
- Artemise**—Rose of several tints.
- Baron de Rothschild**—Salmon center with outside petals rose.
- Beaute Francaise**—Clear red.
- Bucchi**—White, yellow center.
- Carnea Elegans**—Salmon rose.
- Caroline Mather**—Crimson, very large and dark.
- Charles Binder**—Violet red.
- Charles Grosselein**—Salmon with yellow.
- Clarisse**—Violet rose.
- Chrysantemiflora**—White yellow.
- Couronne de Roses**—Dark rose, pink center.
- Cytheree**—Whitish.
- Delachii**—Delicate pink, fine.
- Dorchester** (Richardson's Seedling)—75 cts.
- Duchesse Mathilde.**
- Duchesse de Nemours**—Sulphur with white extra.
- Duke of Wellington**—White with creamy center.

**Faust**—Soft rose.

**Festiva Alba**—Yellowish white.

**Festiva Maxima**—Pure white, large, with a few center petals tinged with carmine, best. 60 cts. each, \$5.00 per ten.

**Francis Ortegal**—Purple crimson, very dark, large.

**Fulgida**—Very dark crimson, profuse flowering, extra.

**Globosa**—Rosy lilac shaded to deep rose.



PÆONIA—FESTIVA MAXIMA

**Grandiflora carnea plena**—Outside petals blush, center yellowish, very large, sweet.

**Grandiflora Superba**—Red with rosy white.

**Henri Behuns**

**Humei**—Rose, very large, late, extra.

**Lady Leonora Bromurd.**

**La France**—Outside petals pink, yellowish centre, fine, 50 cts. each.

**La Martine**—Bright red, full good.

**LaVoluptuise.**

- Louis Van Houtte—Velvety purple, very dark, exceptionally large and desirable, fine form, 50 cts., \$3.50 per 10.  
 Madame Breon—Rose with whitish yellow.  
 Marie Lemoin—Pure white with creamy center.  
 Modista Guerin—Dark rose, large, fragrant.  
 Nivea Plenissima—Pure white.  
 Norfolk (Richardson's Seedling)—50 cts. each.  
 Officinalis Rosea—Pink, very early, good.  
 Officinalis Rubra—Clear red, very early fine.  
 Perfection (Richardson's Seedling)—Outside petals rose-lilac; inside salmon; sweet  
 Queen Perfection—Cream white.  
 Rosea Elegans—Lively rose.  
 Souv. de l'Exposition—Deep rose, large and fine.  
 Sulphuria—White, tinted yellow, large, fine the deepest yellow of all, extra. \$3.50 per 10.  
 Tenuifolia—Fl. pl. (Fringe-leaved Pæonia) shining crimson. \$3.50 per 10.  
 Triomphe de Grand—Rosy white with yellow.  
 Triomphe de Nord—Violet-rose, lilac shade.  
 Victorie Modiste—Inside petals small, double and rosy white surrounded by a row of large single rose petals, distinct.

#### Single Varieties.

Price, 60 cts. each, \$5.00 per 10.

Josephine—Rose.  
 Larissa—Pink.

Mardonius—Crimson.  
 Medon—White.

### PERENNIAL PHLOX.

Strong, field-grown plants, best varieties.

Price \$1.50 per 10, \$12.00 per 100, except where noted.

- Albati—Pure white, about two feet tall, late.  
 Aquilon—Pure white, tall, quite late.  
 Astier Rehu—Light purplish crimson, mottled, large flower.  
 Athis—Deep pink, overlaid with salmon, crimson eye.  
 Beranger—White, suffused with pink, rosy lilac eye.  
 Baule de Feu—Cherry red, brilliant.  
 Boquet de Fleuss—White, large pink center, medium flower and growth.  
 Bridesmaid—White with large rose center, good habit.  
 Champs Elysee—Rich purplish crimson.  
 Coquelicot—Orange scarlet, crimson center. 25 cents.  
 Crepuscule—White, shaded violet, crimson eye, late.  
 Cyclone—White, splashed with deep pink.  
 Czarina—Pure white, early.  
 Dora Umgella—White with lilac pink center, very large.  
 Eclairer—Carmine, salmon center, large.  
 Esperance—Light lavender pink, large white center.  
 Faust—Bright pink, carmine center, large.  
 Franklin—Very dark purple, tall and attractive.  
 General Chanzy—Scarlet pink, tinted salmon.  
 Henry Munger—Pale white, crimson center, large.  
 Independence—Pure white, late.  
 Inspector Juergins—Deep pink, carmine center.  
 James Bennett—Salmon pink, dark center.  
 James Galloway—Cherry red.  
 Jeanne d'Arc—Pure white.  
 Jules Finger—Pure white.  
 La Feu du Monde—Bright salmon red, late.  
 La Flander—Dark red, tall, very late.

- La Pole du Nord—Pure white, crimson center.
- Le Soliel—Brilliant China rose, rose center. 25 cents.
- Lothair—Salmon red, carmine center.
- Mme. Marie Kuppenheim—Pure white, dwarfish, late.
- Madame Meuret—Flame color, carmine center.
- Metador—Bright orange-red, large.
- Michael Buckner—Dark purple.
- Michael Cervantes—Pure white with red center.
- Minerva—Delicate pink.
- Miss Lingard—White with delicate pink center. 25 cents.
- Moliere—Salmon rose, deep rose eye.
- Norwood—Bright magenta-crimson.
- Ornament—Bright pink, very large, medium height.
- P. Bounetain—Bright pink, light center.
- Pantheon—Deep rose.
- Peach Blow—Delicate pink, deep rose center.
- Pluto—Deep fuchsia red.
- Pink Beauty—Light pink.
- Prof. Schlieman—Salmon rose, carmine eye.
- Purity—Snowy white, large flower.
- Richard Wallace—Pure white, violet rose center.
- R. B. Struthers—Bright pinkish salmon, crimson eye.
- Saison Lierval—White, light pink center.
- Semisamis—Crimson purple, large, white center.
- Simplon—Salmon pink, dark center, very large.
- Sunshine—Deep salmon pink, rose center.
- Thebaide—Salmon red, crimson center, dwarfish.
- The Pearle—Pure white.

**SEEDLING PHLOX.**

These include some of the finest varieties. Mixed seedlings, \$1.00 per dozen, \$6.00 per 100.

**DWARF PHLOX.**

	Per 10	Per 100
<b>PHLOX amœna.</b> One of the best early flowering species.		
Flowers pinkish-purple.....	\$1.50	
<b>P. Caroliniana var. ovata.</b> Large purplish-red flowers.....	1.50	
<b>divaricata.</b> Fragrant lilac flowers. 6 in.....	1.20	\$10.00
<b>P. subulata.</b> (Moss Pink.) Forms a carpet of moss-like foliage, covered with purple-pink flowers in spring.....	1.00	8.00
<b>P. subulata alba.</b> A form of p. subulata with white flowers.....	1.00	8.00
<b>P. sublata var. The Bride.</b> White with red center.	1.20	10.00
<b>PAPAVER orientale</b> (Oriental Poppy)—Flowers of large size and gorgeous colors, 2 ft.....	1.50	12.00
<b>nudicaule</b> (Iceland Poppy)—Fernlike foliage and cup-shaped flowers of various colors, all season, 1 ft....	1.50	12.00
<b>ENTSTEMON</b> (Beard Tongue).		
<b>barbatus Torreyii</b> —Bright scarlet spikes, June to August, 3 to 4 ft.....	1.20	10.00
<b>diffusus</b> —Showy spikes of purple flowers. 18 ins. August.....	1.50	
<b>digitalis</b> —Purple-white spikes in July and August, 2 to 3 ft.....	1.20	
<b>ovatus</b> —Blue changing to purple, July and August, 2 to 3 ft.....	1.50	
<b>PHYSOSTEGIA</b> (False Dragon Head).		
<b>Virginica</b> —Pink flowers, 3 ft.....	15.0	12.00

	Per 10	Per 100
Virginica alba—Pure white, 3 to 4 ft. . . . .	\$1.50	
PINKS Hardy Garden - See Dianthus.		
PLATYCODON (Chinese Bell Flower).		
grandiflorum—Blue, June to October, 18 in. . . . .	1.50	\$12.00
grandiflorum album—White, June to October, 18 in.	1.50	
grandiflore plena—Double flowers, 18 in. . . . .	2.00	
POLEMONIUM (Jacob's Ladder).		
cœruleum—Terminal spikes of blue, June and July, 1 ft. . . . .	1.50	
POLYGONATUM (Solomon's Seal).		
cuspidatum—White tubular blooms, 2 ft. . . . .	1.50	12.00
multiflorum—Does well in shady spots, 2 ft. . . . .	1.50	
POTENTILLA formosa (Cinquefoil)—Showy red flow- ers in July, 18 in. . . . .	1.50	
grandiflora—Red and orange, June and July, 1 ft. . .	1.20	
lutea—Rich yellow, June and July, 1 ft. . . . .	1.20	
PRIMULA carpatica (Primrose)—Dense round head of deep violet blue in spring . . . . .	1.50	
officinalis hybrida (Cowslip)—These vary in color, ranging from crimson to deep yellow and pure white . . . . .	1.20	
Veris superba—Very large yellow flowers. . . . .	1.50	
PYRETHRUM—(Feverfew).		
uliginosum (Giant Daisy)—Large white daisy-like flowers, July to September, 4 to 5 ft. . . . .	1.50	12.00
Double, in Colors—Red, white and pink . . . . .	3.50	
Single, Mixed . . . . .	1.00	8.00
Single, in Colors - Red, white and pink . . . . .	1.50	
RANUNCULUS acris fl. pl. (Bachelors' Buttons)—A double flowered form of the yellow Buttercup, May and June, 2 ft. . . . .	1.20	10.00
RUDBECKIA—(Coneflower)		
"Golden Glow"—One of the finest perennials, with bright double yellow flowers in summer, 6 ft. . . . .	1.00	8.00
fulgida—Plant compact and bushy. Orange yellow with maroon disk, 6 ft. . . . .	1.20	
Newmanii—Golden yellow with jet-black center, 3 ft., September . . . . .	1.50	
purpurea (Giant Purple Coneflower)—Very large, reddish-purple flowers, June to October, entirely distinct, 4 ft. . . . .	1.20	10.00
sub-tomentosa—Very attractive, yellow flowers in August, 5 ft. . . . .	1.50	
RHEXIA Virginica (Meadow Beauty)—A handsome dwarf plant, rosy-purple, blossoms in summer. . . . .	1.50	
SALVIA azurea grandiflora (Meadow Sage)—Sky-blue flowers in great profusion, August and September, 3 to 4 ft. . . . .	1.50	12.00
pratensis—Showy spikes of deep blue, June to August, 2 to 3 ft. . . . .	1.50	
SANTALINA incana—Small yellow flowers in abund- ance, June, 1 ft. . . . .	1.50	
SAPONARIA ocymoides—A useful trailing plant; bright pink flowers. May to August, 6 in. . . . .	1.50	12.00
SCABIOSA Caucasica—A charming perennial, lilac- blue flowers, June to September, 1½ ft. . . . .	1.50	
Caucasica alba - A white variety . . . . .	2.00	
SEDUM (Stone-crop).		
acre (Golden Moss)—Creeping, yellow foliage and flowers . . . . .	1.50	

	Per 10	Per 100
album—Creeping, green foliage, white flowers . . . . .	\$1.20	
maximum atropurpureum—Upright habit, metallic-brown foliage, reddish flowers . . . . .	1.50	
Seiboldi—Trailing branches, broad foliage margined with pink; flowers bright pink, 6 in. . . . .	1.20	
spectabile (Brilliant Stone-crop)—Erect habit, broad green foliage and immense rose-colored flowers in late fall. . . . .	1.50	\$12.00
SIDALCEA candida—Pure white flowers, about an inch across. 3 ft. June . . . . .	1.50	
SILENE maritima—A dwarf plant 2 to 4 in., high with white flowers, June . . . . .	1.50	12.00
Pennsylvanica—Native, bright pink flowers, 9 in. . . . .	1.50	.
SOLIDAGO Canadensis (Golden rod)—Golden yellow flowers in fall, 3 to 4 ft. . . . .	1.00	8.00



TRITOMA—PFITZERII

SPIRÆA Aruncus—White plumes very graceful. June, 4 ft . . . . .	1.50	
astilboides—Blooms of feathery white, beautiful foliage. June and July, 2 ft. . . . .	1.50	12.00
Kamtschatka—White. June, 6 ft. . . . .	1.50	
filipendula—Showy heads of white flowers tinged with rose, 2 ft. June . . . . .	1.20	10.00
filipendula fl. pl.—Double white flowers; fern like foliage. June and July, 2 ft . . . . .	1.50	12.00
palmata—Vivid crimson flowers, elegant foliage, 3 ft. June to August . . . . .	1.50	12.00
palmata alba—A pure white variety, similar to above . . . . .	2.50	20.00

	Per 10	Per 100
<i>venusta</i> —Deep pink. July, 5 ft.....	\$1.50	
<b>STACHYS</b> (Woundwort) <i>lanata</i> —Silvery-white foliage, and small, purple flowers, 1 ft.....	1.50	\$12.00
<b>STATIC</b> (Sea Lavender)—Leathery foliage and immense panicles of minute flowers.....	1.50	12.00
<i>latifolia</i> —Immense size, deep blue.....	1.50	
<b>STOCKESIA cyanea</b> —Lavender blue. July to October, 18 in.....	1.50	
<b>THALACTRUM</b> —Meadow Rue.		
<i>aquilegifolium</i> —Purple flowers, 2 ft. May to July.	2.00	
<b>THERMOPSIS Caroliniana</b> —Long spikes of yellow flowers in June and July, 6 to 8 ft.....	1.50	
<b>THYMUS Vulgaris</b> —Small lilac flowers, aromatic flavor and fragrance, 6 in. June and July.....	1.50	
<b>TRADESCANTIA</b> (Spider-wort).		
<i>Virginica</i> —Succession of purple flowers all summer, 2 ft.....	1.50	12.00
<i>Virginica alba</i> —White flowered.....	1.50	
<b>TRILLIUM</b> —(Wood Lily).		
<i>erectum</i> —Maroon. April, 6 to 9 ins.....	1.00	8.00
<i>grandiflorum</i> —White. April, 6 to 9 in.....	1.00	8.00
<b>TRITOMA</b> (Red Hot Poker).		
<i>Pfitzerii</i> —Orange scarlet, August to October, 4 ft..	2.00	
<i>uvaria grandiflora</i> —Rich crimson, 3 to 4 ft.....	1.50	
<b>TROLLIUS Europæus</b> (Globe Flower)—Flowers like a giant buttercup, all summer, 1 ft.....	1.50	12.00
<i>giganteus</i> (Large Globe Flower)—May, 18 in....	1.50	
<b>TUNICA saxifra</b> —Dwarf, tufted plant; bright pink, flowers all summer.....	1.50	
<b>VALERIANA officinalis</b> —Lavender, June, 4 ft.....	1.50	
<b>VERBASCUM olympicum</b> —Silvery-white foliage, yellow flowers in August, 6 ft.....	1.50	
<b>VERONICA</b> (Speedwell).		
<i>amethystina</i> —Flowers amythyst blue, on short spikes. June, 12 in.....	1.50	
<i>gentianoides</i> —Pale blue. 1 ft. May.....	2.00	
<i>longifolia</i> —Blue. August, 2 ft.....	1.20	
<i>longifolia subsessillis</i> —Spikes of blue flowers a foot long, July to September, 2 ft.....	2.00	15.00
<i>incana</i> —Silvery foliage, blue flowers, July and August, 1 ft.....	2.00	
<i>spicata</i> —Long spikes of bright blue, June and July 18 in.....	1.50	
<i>spicata alba</i> —A white-flowered form.....	1.50	
<i>rupestris</i> —A fine rock plant, with blue flowers in early spring.....	1.50	
<b>VERNONIA Arkansana</b> (Iron Weed)—Large heads of purple in September, 5 ft.....	1.50	
<b>VIOLA</b> —Violets.		
<i>cornuta</i> —Deep purple. April to August, 9 in....	1.50	
<i>cornuta alba</i> —Large, white flowered variety.....	2.00	
Double Russian—Double deep purple.....	1.50	10.00
<i>pedata</i> —Large, lilac flowered variety.....	1.50	
Wellsiana—Large, rich purple.....	1.20	
<b>VINCA minor</b> (Periwinkle, or Trailing Myrtle)—A fine evergreen trailing plant.....	.75	6.00
<b>VINCETOXICUM Japonicum</b> —Flowers white and waxy. Blooms all summer, 3 ft.....	1.50	



	Per 10	Per 100
<b>YUCCA filamentosa</b> (Adam's Needle)—Very ornamental, swordlike foliage and tall spikes of creamy white flowers in June, 6 ft .. .. .	\$2.50	\$20.00



YUCCA FILAMENTOSA.

## Fruit Trees.

### APPLES.

	Per 10	Per 100
Extra. 6 to 8 ft., 30 cts. each .. .. .	\$2.50	\$20.00
First Grade. $\frac{3}{4}$ in., 5 to 7 ft., 25c. each .. .. .	2.00	15.00

Will follow wishes of customers in the selection as closely as possible. List includes the following varieties: Arkansas Red, America, Baldwin, Ben Davis, Boiken, Duch. of Oldenburg, Fallawater, Fameuse, Golden Russet, Gravenstein, Grimes' Golden, Gideon, Giffen Beauty, Hub. Nonesuch, Hendrick's Sweet, King, Longfield, Maiden's Blush, Mann, McIntosh Red, Milding, Munson Sweet, Northern Spy, Pewaukee, Paragon, Rambo, Red Astrachan, R. I. Greening, Roxbury Russet, Rome Beauty, Sutton Beauty, Senator, Smith's Cider, Smoke House, Sops of Wine, Spitzenburg, Stark, Sweet Bough, Talman Sweet, Wagener, Wealthy, Wolf River, Yellow Bellflower, Yellow Transparent, York Imperial, Yellow Sweet.

<b>CRAB APPLES</b> —5 to 7 ft., 30c. each .. .. .	2.50
Hyslop, Gen. Grant, Martha, Transcendent.	

### STANDARD PEARS.

First Class— $\frac{3}{4}$ in. and up, 5 to 7 ft., 60c. each . . .	5.00
--	------

The list is made up of the following varieties: Anjou, Bartlett, Clairgeau, Clapp's, Dana's Hovey, Dearborn Seedling, Duchess, Flemish Beauty, Idaho, Lawrence, Seckel, Sheldon, Tyson, Vt. Beauty, Winter Nelis, Wilder.

Beurre Bosc—75c. each .. .. .	7.00
-------------------------------	------

<b>CHERRIES</b> —6 to 8 ft., XX, \$1.00 each .. .. .	
First Grade—5 to 6 ft., 75c. each .. .. .	6.00

The list includes the following varieties: Black Tartarian, Early Richmond, Gov. Wood, Mercer, Montmorency, Ostheme, Reine Hortense, Windsor, Yellow Spanish.

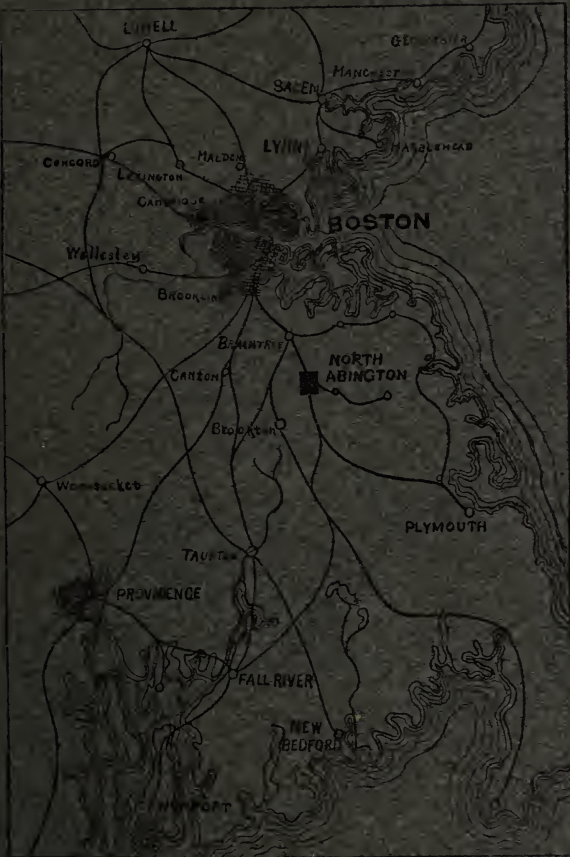
	Per 10	Per 100
<b>PLUMS</b> —6 to 8 ft., XX, \$1.00 each.		
<b>First Grade</b> —5 to 7 ft., 75c. each . . . . .	\$6.00	
Abundance, Beauty of Naples, Bradshaw, Burbank, Chabot, Lombard, Moore's Arctic, Red June, Reine Claude, Satsuma, Wickson, Willard.		
<b>PEACHES</b> — $\frac{3}{4}$ in. and up, 20c. each . . . . .	1.50	\$12.00
Champion, Crawford's Early, Crawford's Late, Crosby, Elberta, Foster, Mountain Rose, Old Mixon, Stevens' Rareripe, Stump, Wheatland.		
<b>QUINCES</b> —4 to 5 ft., 50c. each . . . . .	4.50	
Champion, Meech's Prolific, Orange, Rea's.		

## Small Fruit.

<b>GRAPES</b> —2 and 3 yrs., 35c. each . . . . .	3.00	25.00
Except Campbell's Early, Green Mountain, and McPike which are 50, 75 and 75c. each, respectively.		
Brighton, Campbell's Early, Concord, Delaware, Green Mountain, Hartford, McPike, Moore's Diamond, Moore's Early, Niagara, Pocklington, Salem, Vergennes, Wilder, Worden.		
<b>CURRANTS</b> —2 yrs., No. 1 . . . . .	1.00	8.00
2 yrs., No. 2 . . . . .		5.00
Black Naples, Cherry, Fay's Prolific, White Grape, La Versailles, North Star, and Victoria.		
<b>GOOSEBERRIES. Downing</b> —2 yrs . . . . .	1.25	10.00
Houghton—2 yrs . . . . .	1.00	8.00
Industry—3 yrs. selected . . . . .	2.50	20.00
Whitesmith—3 yrs. selected . . . . .	3.00	25.00
<b>RASPBERRIES</b> —Columbian, Cuthbert, Golden Queen, Gregg, Loudon, Marlboro, Souhegan . . . . .	.75	4.00
<b>BLACKBERRIES</b> —Agawam, Erie, Snyder, Wachusett	1.00	5.00
<b>ASPARAGUS</b> —Conover's Colossal and Palmetto, 2 yrs., \$10.00 per M. . . . .		1.50
<b>RHUBARB</b> —Myatt's 50c. each . . . . .	3.50	

# LOCATION OF BAY STATE NURSERIES.

**NORTH ABINGTON** is a rural and sea-march town of Boston, half way down  
the line to Plymouth Mass., on the Old Colony Division of the N. Y. N. H. & H. R. R.  
Trains to the State Union Station for North Abington about every hour during the  
day.



Commonwealth of Massachusetts.

## STATE BOARD OF AGRICULTURE.

*Official Certificate No. 32*

*Boston, Aug. 27, 1904.*

### TO WHOM IT MAY CONCERN

This is to Certify that I have this twenty-seventh day of August, 1904, completed the  
inspection of the nursery stock of the Bay State Nurseries (W. H. Wyman, Prop'r)  
situated at North Abington and Rye Beach, State of Massachusetts, and find it to  
be free from the Jan Jans' Scab and other injurious insects and diseases which  
are liable to be transmitted on Nursery stock from the Nursery to the orchard or garden.  
This certificate is good until July 1, 1905.

(Signed) H. T. PENNALL Inspector

