

GAGURITAN KAWI\_SWARA

Druen :  
Pusat Dokumentasi  
Dinas Kebudayaan Provinsi Bali

PERPUSTAKAAN  
KTR. DOKBUD BALI  
PROP. BALI  
G/VIII/20/DOKBUI

101/6/PDKB 11/11-85

Nama/judul: = Gag. KAWI-SWARA- <sup>1/5</sup> K5  
Panj. 45 cm. Leb. 3,5 cm. Jml. 50 lb.  
Asal: Tampwagan, Amlapura, Kr. asem.

photographer by : I Dewa Mah Darmawan

1  
A



Nama/judul: = Gag. KAWI-SWARA-  
Panj. 45 cm. Leb. 3,5 cm. Jml. 50 lb.  
Asal: Tampwagan, Amlapura, Kr. asem.

GAGURITAN KAWI\_SWARA

Druen :  
Pusat Dokumentasi  
Dinas Kebudayaan Provinsi Bali

1  
B

Handwritten text in Kawi script on a palm leaf manuscript strip. The text is arranged in two columns. On the right side of the strip, there is a circular library stamp with the text 'PUSAT DOKUMENTASI DINAS KEBUDAYAAN PROVINSI BALI'.

photographer by : I Dewa Mah Darmawan

2  
A

Handwritten text in Kawi script on a palm leaf manuscript strip. The text is arranged in two columns.



GAGURITAN KAWI\_SWARA

Druen :  
Pusat Dokumentasi  
Dinas Kebudayaan Provinsi Bali

2  
B

Handwritten text in Kawi script on a palm leaf, starting with a small symbol and followed by several lines of characters.

Handwritten text in Kawi script on a palm leaf, continuing the text from the previous leaf.

photographer by : I Dewa Mah Darmawan

3  
A

Handwritten text in Kawi script on a palm leaf, starting with a small symbol and followed by several lines of characters.

Handwritten text in Kawi script on a palm leaf, continuing the text from the previous leaf.

GAGURITAN KAWI\_SWARA

Druen :  
Pusat Dokumentasi  
Dinas Kebudayaan Provinsi Bali

3  
B

Handwritten text in Kawi script on a palm leaf manuscript strip, consisting of two columns of text.

photographer by : I Dewa Mah Darmawan

4  
A

Handwritten text in Kawi script on a palm leaf manuscript strip, consisting of two columns of text.









GAGURITAN KAWI SWARA

Druen :

Pusat Dokumentasi  
Dinas Kebudayaan Provinsi Bali

6  
B

Handwritten text on a palm leaf manuscript strip, consisting of two columns of Balinese script.

photographer by : I Dewa Mah Darmawan

7  
A

Handwritten text on a palm leaf manuscript strip, consisting of two columns of Balinese script.

GAGURITAN KAWI\_SWARA

Druen :

Pusat Dokumentasi  
Dinas Kebudayaan Provinsi Bali

7  
B

Handwritten text on a palm leaf manuscript strip, likely in Balinese script. The text is arranged in two columns.

Photographer by : I Dewa Mah Darmawan

8  
A

Handwritten text on a palm leaf manuscript strip, likely in Balinese script. The text is arranged in two columns.



GAGURITAN KAWI SWARA

Druen :

Pusat Dokumentasi  
Dinas Kebudayaan Provinsi Bali

8  
B

Handwritten text on a palm leaf manuscript strip, likely in Balinese script. The text is arranged in two columns. The left column begins with a small symbol resembling a '5' followed by several lines of text. The right column also contains several lines of text. The script is finely etched into the surface of the dried leaf.

Photographer by: I Dewa Mah Darmawan

9  
A

Handwritten text on a second palm leaf manuscript strip, continuing the text from the first strip. It is also arranged in two columns. The script is consistent with the first strip, showing Balinese Kawi Swara. The leaf shows some signs of age and wear.

GAGURITAN KAWI SWARA

Druen :

Pusat Dokumentasi  
Dinas Kebudayaan Provinsi Bali

9  
B

Handwritten text in Kawi script on a palm leaf manuscript strip. The text is arranged in two columns. On the right end of the strip, there is a circular stamp with a central emblem and text around the perimeter.

photographer by: I Dewa Mah Darmawan

10  
A

Handwritten text in Kawi script on a palm leaf manuscript strip. The text is arranged in two columns.



GAGURITAN KAWI\_SWARA

Druen :  
Pusat Dokumentasi  
Dinas Kebudayaan Provinsi Bali

10  
B

Handwritten Balinese text on a palm leaf manuscript strip, likely a Gaguritan Kawi Swara. The text is arranged in two columns and includes several lines of script.

photographer by: I Dewa Mah Darmawan

11  
A

Handwritten Balinese text on a palm leaf manuscript strip, likely a Gaguritan Kawi Swara. The text is arranged in two columns and includes several lines of script.

GAGURITAN KAWI\_SWARA

Druen :

Pusat Dokumentasi

Dinas Kebudayaan Provinsi Bali

11  
B

Handwritten Balinese text on a palm leaf manuscript strip, divided into two columns.

photographer by: I Dewa Mah Darmawan

12  
A

Handwritten Balinese text on a palm leaf manuscript strip, divided into two columns.



GAGURITAN KAWI\_SWARA

Druen :

Pusat Dokumentasi

Dinas Kebudayaan Provinsi Bali

12  
B

Handwritten Balinese text on a palm leaf manuscript strip, consisting of two columns of script.

photographer by: I Dewa Mah Darmawan

13  
A

Handwritten Balinese text on a palm leaf manuscript strip, consisting of two columns of script.

GAGURITAN KAWI\_SWARA

Druen :

Pusat Dokumentasi

Dinas Kebudayaan Provinsi Bali

13  
B

Handwritten Balinese text on a palm leaf manuscript strip, consisting of two columns of script.

Photographer by : I Dewa Mah Darmawan

14  
A

Handwritten Balinese text on a palm leaf manuscript strip, consisting of two columns of script.



GAGURITAN KAWI\_SWARA

Druen : .

Pusat Dokumentasi

Dinas Kebudayaan Provinsi Bali

14  
B

Handwritten Balinese text on a palm leaf manuscript strip, including a small number '14' and a letter 'B' on the left margin.

photographer by : I Dewa Mah Darmawan

15  
A

Handwritten Balinese text on a palm leaf manuscript strip, including a small number '15' and a letter 'A' on the left margin.

GAGURITAN KAWI\_SWARA

Druen :

Pusat Dokumentasi

Dinas Kebudayaan Provinsi Bali

15  
D

Handwritten Balinese text on a palm leaf manuscript strip, consisting of two columns of script.

photographer by : I Dewa Mah Darmawan

16  
A

Handwritten Balinese text on a palm leaf manuscript strip, consisting of two columns of script.



GAGURITAN KAWI\_SWARA

Druen :  
Pusat Dokumentasi  
Dinas Kebudayaan Provinsi Bali

16 B  
Handwritten Balinese text on a palm leaf manuscript strip, consisting of two columns of script.

Photographer by : I Dewa Mah Darmawan

17 A  
Handwritten Balinese text on a palm leaf manuscript strip, consisting of two columns of script.

GAGURITAN KAWI\_SWARA

Druen :  
Pusat Dokumentasi  
Dinas Kebudayaan Provinsi Bali

17 B  
Handwritten text in Balinese script on a palm leaf, including a small label '17 B' on the left.

Photographer by : I Dewa Mah Darmawan

18 A  
Handwritten text in Balinese script on a palm leaf, including a small label '18 A' on the left.



**GAGURITAN KAWI SWARA**  
 Druen :  
 Pusat Dokumentasi  
 Dinas Kebudayaan Provinsi Bali

18 B  
 (Handwritten Balinese text on a palm leaf manuscript strip)

photographer by : I Dewa Mada Darmawan

19 A  
 (Handwritten Balinese text on a palm leaf manuscript strip)

**GAGURITAN KAWI\_SWARA**  
Druen :  
Pusat Dokumentasi  
Dinas Kebudayaan Provinsi Bali

19 B  
ꦒꦁꦸꦫꦶꦠꦤ꧀ ꦏꦮꦶꦱꦮꦫꦤ꧀  
ꦧꦺꦠꦸꦥꦏꦸꦩꦺꦤ꧀ꦠꦶ ꦤꦶꦩꦸꦠ  
ꦏꦺꦧꦸꦧꦿꦫꦺꦤ꧀ ꦧꦭꦶꦠꦺꦱꦸꦫꦶꦤꦠꦺꦤ꧀  
ꦏꦺꦧꦸꦧꦿꦫꦺꦤ꧀ ꦤꦶꦩꦸꦠꦏꦸꦩꦺꦤ꧀ꦠꦶ  
ꦤꦶꦩꦸꦠꦏꦸꦩꦺꦤ꧀ꦠꦶ ꦤꦶꦩꦸꦠꦏꦸꦩꦺꦤ꧀ꦠꦶ

photographer by : I Dewa Mat Darmawan

20 A  
ꦒꦁꦸꦫꦶꦠꦤ꧀ ꦏꦮꦶꦱꦮꦫꦤ꧀  
ꦧꦺꦠꦸꦥꦏꦸꦩꦺꦤ꧀ꦠꦶ ꦤꦶꦩꦸꦠꦏꦸꦩꦺꦤ꧀ꦠꦶ  
ꦤꦶꦩꦸꦠꦏꦸꦩꦺꦤ꧀ꦠꦶ ꦤꦶꦩꦸꦠꦏꦸꦩꦺꦤ꧀ꦠꦶ  
ꦤꦶꦩꦸꦠꦏꦸꦩꦺꦤ꧀ꦠꦶ ꦤꦶꦩꦸꦠꦏꦸꦩꦺꦤ꧀ꦠꦶ  
ꦤꦶꦩꦸꦠꦏꦸꦩꦺꦤ꧀ꦠꦶ ꦤꦶꦩꦸꦠꦏꦸꦩꦺꦤ꧀ꦠꦶ



GAGURITAN KAWI SWARA  
Druen :  
Pusat Dokumentasi  
Dinas Kebudayaan Provinsi Bali

43	20	43	...	...
	B		...	...

Handwritten Balinese text on a palm leaf manuscript strip, divided into two columns.

photographer by : I Dewa Mat Darmawan

44	21	44	...	...
	A		...	...

Handwritten Balinese text on a palm leaf manuscript strip, divided into two columns.

GAGURITAN KAWI SWARA  
Druen :  
Pusat Dokumentasi  
Dinas Kebudayaan Provinsi Bali

21  
B

Handwritten Balinese text on a palm leaf manuscript strip, consisting of two columns of script.

photographer by : I Dewa Mah Darmawan

22  
A

Handwritten Balinese text on a palm leaf manuscript strip, consisting of two columns of script.



GAGURITAN KAWI\_SWARA  
Druen :  
Pusat Dokumentasi  
Dinas Kebudayaan Provinsi Bali

22  
B

Handwritten Balinese text on a palm leaf manuscript strip, consisting of two columns of script.

photographer by : I Dewa Mah Darmawan

23  
A

Handwritten Balinese text on a palm leaf manuscript strip, consisting of two columns of script.

GAGURITAN KAWI\_SWARA

Druen :  
Pusat Dokumentasi  
Dinas Kebudayaan Provinsi Bali

23

B

Handwritten text on a palm leaf slip, likely a Balinese gaguritan. The text is arranged in two columns, with a small vertical inscription on the left edge. The script is a traditional Balinese form, possibly Kawi or a related dialect.

photographer by : I Dewa Mah Darmawan

24

A

Handwritten text on a palm leaf slip, similar to the one above. It consists of two columns of text written in a Balinese script.



GAGURITAN KAWI\_SWARA  
Druen :  
Pusat Dokumentasi  
Dinas Kebudayaan Provinsi Bali

24

B

Handwritten text in Balinese script on a palm leaf, consisting of two columns of text.

photographer by : I Dewa Mah Darmawan

25

A

Handwritten text in Balinese script on a palm leaf, consisting of two columns of text.

GAGURITAN KAWI SWARA

Druen :  
Pusat Dokumentasi  
Dinas Kebudayaan Provinsi Bali

25

B

Handwritten Balinese text on a palm leaf, consisting of two columns of script.

Photographer by : I Dewa Mada Darmawan

26

A

Handwritten Balinese text on a palm leaf, consisting of two columns of script.



GAGURITAN KAWI\_SWARA  
Druen :  
Pusat Dokumentasi  
Dinas Kebudayaan Provinsi Bali

26 B  
Handwritten Balinese text on a palm leaf manuscript strip, including a small 'A' in a triangle at the top left.

photographer by : I Dewa Mah Darmawan

27 A  
Handwritten Balinese text on a palm leaf manuscript strip.

GAGURITAN KAWI SWARA  
Druen :  
Pusat Dokumentasi  
Dinas Kebudayaan Provinsi Bali

27  
B  
Handwritten Balinese text on a palm leaf manuscript strip.

photographer by : I Dewa Mah Darmawan

28  
A  
Handwritten Balinese text on a palm leaf manuscript strip.



GAGURITAN KAWI\_SWARA  
Druen :  
Pusat Dokumentasi  
Dinas Kebudayaan Provinsi Bali

28  
B

Handwritten text on a palm leaf manuscript strip, consisting of two columns of Balinese script.

photographer by : I Dewa Mah Darmawan

29  
A

Handwritten text on a palm leaf manuscript strip, consisting of two columns of Balinese script.

GAGURITAN KAWI\_SWARA

Druen :  
Pusat Dokumentasi  
Dinas Kebudayaan Provinsi Bali

Handwritten text on a palm leaf manuscript strip, labeled '29 B' on the left. The text is written in Balinese Kawi script.

photographer by : I Dewa Mah Darmawan

Handwritten text on a palm leaf manuscript strip, labeled '30 A' on the left. The text is written in Balinese Kawi script.



GAGURITAN KAWI SWARA  
Druen :  
Pusat Dokumentasi  
Dinas Kebudayaan Provinsi Bali

30  
B

Handwritten Balinese text on a palm leaf, consisting of two columns of script.

photographer by : I Dewa Mada Darmawan

31  
A

Handwritten Balinese text on a palm leaf, consisting of two columns of script.

GAGURITAN KAWI SWARA  
Druen :  
Pusat Dokumentasi  
Dinas Kebudayaan Provinsi Bali

31	B
----	---

Handwritten text in Kawi script on a palm leaf manuscript strip, divided into two columns.

Photographer by : I Dewa Mada Darmawan

32	A
----	---

Handwritten text in Kawi script on a palm leaf manuscript strip, divided into two columns.



GAGURITAN KAWI SWARA  
Druen :  
Pusat Dokumentasi  
Dinas Kebudayaan Provinsi Bali

32  
B

Handwritten Balinese text on a palm leaf manuscript strip, likely a form of Gaguritan Kawi Swara.

Photographer by : I Dewa Mah Darmawan

33  
A

Handwritten Balinese text on a palm leaf manuscript strip, likely a form of Gaguritan Kawi Swara.

GAGURITAN KAWI SWARA  
Druen :  
Pusat Dokumentasi  
Dinas Kebudayaan Provinsi Bali

33  
B  
Balinese script on palm leaf with two holes. The text is written in two columns. The first column starts with 'Balinese script' and continues with several lines of text. The second column also contains several lines of text. There are some markings on the left edge of the leaf.

Photographer by : Dewa Mah Darmawan

34  
A  
Balinese script on palm leaf with two holes. The text is written in two columns. The first column starts with 'Balinese script' and continues with several lines of text. The second column also contains several lines of text.



GAGURITAN KAWI SWARA  
Druen :  
Pusat Dokumentasi  
Dinas Kebudayaan Provinsi Bali

34  
B

Handwritten Balinese text on a palm leaf, consisting of two columns of script.

photographer by : Dewa Mah Darmawan

35  
A

Handwritten Balinese text on a palm leaf, consisting of two columns of script.

GAGURITAN KAWI SWARA  
Druen :  
Pusat Dokumentasi  
Dinas Kebudayaan Provinsi Bali

35  
B

Handwritten Balinese text on a palm leaf manuscript strip, consisting of two columns of script.

Photographer by : I Dewa Mah Darmawan

36  
A

Handwritten Balinese text on a palm leaf manuscript strip, consisting of two columns of script.



GAGURITAN KAWI SWARA  
Druen :  
Pusat Dokumentasi  
Dinas Kebudayaan Provinsi Bali

36  
B

Handwritten Balinese text on a palm leaf manuscript strip, consisting of two columns of script.

Photographer by : I Dewa Mada Darmawan

37  
A

Handwritten Balinese text on a palm leaf manuscript strip, consisting of two columns of script.

**GAGURITAN KAWI SWARA**  
 Druen :  
 Pusat Dokumentasi  
 Dinas Kebudayaan Provinsi Bali

37  
 B

Handwritten Balinese text on a palm leaf manuscript strip, consisting of two columns of script.

photographer by : I Dewa Mah Darmawan

38  
 A

Handwritten Balinese text on a palm leaf manuscript strip, consisting of two columns of script.



GAGURITAN KAWLSWARA

Druen :  
Pusat Dokumentasi  
Dinas Kebudayaan Provinsi Bali

38  
B

Handwritten Balinese script on a palm leaf manuscript strip, containing two columns of text.

Photographer by : I Dewa Made Darmawan

39  
A

Handwritten Balinese script on a palm leaf manuscript strip, containing two columns of text.

GAGURITAN KAWI SWARA  
Druen :  
Pusat Dokumentasi  
Dinas Kebudayaan Provinsi Bali

39  
B

Handwritten Balinese text on a palm leaf manuscript strip, consisting of two columns of script.

photographer by : I Dewa Mada Darmawan

40  
A

Handwritten Balinese text on a palm leaf manuscript strip, consisting of two columns of script.



GAGURITAN KAWI SWARA  
Druen :  
Pusat Dokumentasi  
Dinas Kebudayaan Provinsi Bali

80  
40  
B

Handwritten Balinese text on a palm leaf manuscript strip, consisting of two columns of script.

photographer by : I Dewa Mah Darmawan

81  
41  
A

Handwritten Balinese text on a palm leaf manuscript strip, consisting of two columns of script.

**GAGURITAN KAWL SWARA**  
Druen :  
Pusat Dokumentasi  
Dinas Kebudayaan Provinsi Bali

41  
B

Handwritten text in Balinese script on a palm leaf, divided into two columns. The script is finely etched into the surface of the dried leaf.

photographer by : I Dewa Muzi Darmawan

42  
A

Handwritten text in Balinese script on a palm leaf, divided into two columns. The script is finely etched into the surface of the dried leaf.



GAGURITAN KAWLSWARA  
Druen :  
Pusat Dokumentasi  
Dinas Kebudayaan Provinsi Bali

42  
B

Handwritten Balinese script on a palm leaf, consisting of two columns of text.

photographer by : I Dewa Mah Darmawan

43  
A

Handwritten Balinese script on a palm leaf, consisting of two columns of text.

GAGURITAN KAWI SWARA  
Druen :  
Pusat Dokumentasi  
Dinas Kebudayaan Provinsi Bali

33  
43  
B

Handwritten Balinese text on a palm leaf manuscript strip, featuring a circular symbol at the beginning of the first line.

Photographer by : I Dewa Mah Darmawan

34  
44  
A

Handwritten Balinese text on a palm leaf manuscript strip.









GAGURITAN KAWLSWARA  
Druen :  
Pusat Dokumentasi  
Dinas Kebudayaan Provinsi Bali

46  
B

Handwritten Balinese script on a palm leaf manuscript strip, divided into two columns. The text is written in a traditional style with dark ink on the natural brown color of the leaf.

Photographer by: I Dewa Mah Darmawan

47  
A

Handwritten Balinese script on a palm leaf manuscript strip, divided into two columns. The text is written in a traditional style with dark ink on the natural brown color of the leaf.











GAGURITAN KAWL SWARA

Druen :  
Pusat Dokumentasi  
Dinas Kebudayaan Provinsi Bali

50  
B



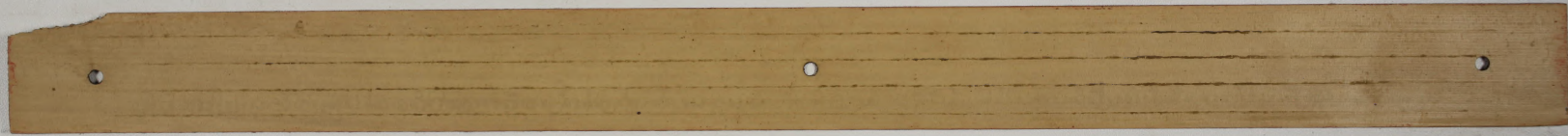
Handwritten Balinese script on a palm leaf fragment.

photographer by: I Dewa Mah Darmawan

51  
A

Handwritten Balinese script on a palm leaf fragment.

**GAGURITAN KAWL SWARA**  
Druen :  
Pusat Dokumentasi  
Dinas Kebudayaan Provinsi Bali



photographer by: I Dewa Mah Darmawan





**GAGURITAN KAWI\_SWARA**

Druen :  
Pusat Dokumentasi  
Dinas Kebudayaan Provinsi Bali

