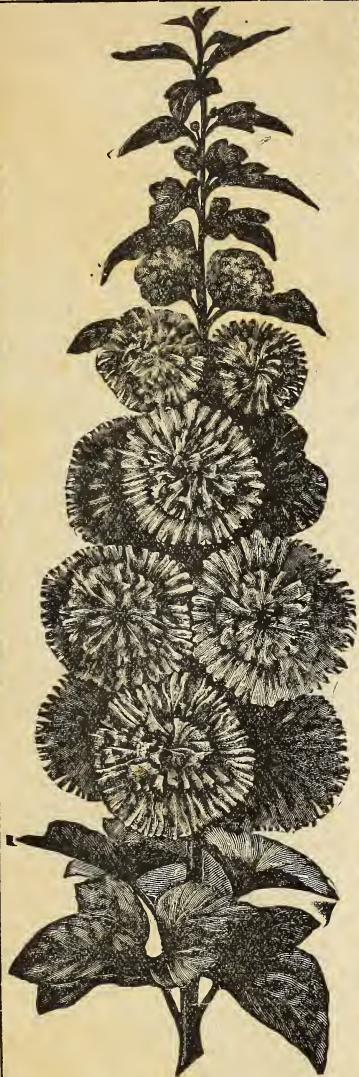


Historic, archived document

Do not assume content reflects current scientific knowledge, policies, or practices.



ALLEGHENY HOLLYHOCKS



CUPID SWEET PEAS

1900 Book of Flowers

MISS MARTHA HISER,

Seedsman and Florist,

URBANA, OHIO.

MY SEEDS ARE ALL NEW AND FRESH, THIS YEAR'S CROP.
SURE TO GROW AND BLOOM WHERE OTHERS FAIL.
I DO NOT SELL CHEAP SEEDS. I DO SELL SEEDS CHEAP.

How to Send MONEY

Make your remittance by Postoffice Money Order, Express Money Order or New York or Chicago Bank Draft; these three methods are absolutely safe.

If lost a duplicate can be had from the issuing office; you may select any packet of Seed to cover the cost of your remittance. Do not send personal checks on your local bank, it costs 15 to 25 cents to collect them. The proper remittance must in all cases accompany the order. It will save me time and you worry.

New Ever-Blooming Allegheny Fringed Hollyhocks

Blooms the First Year From Seed.

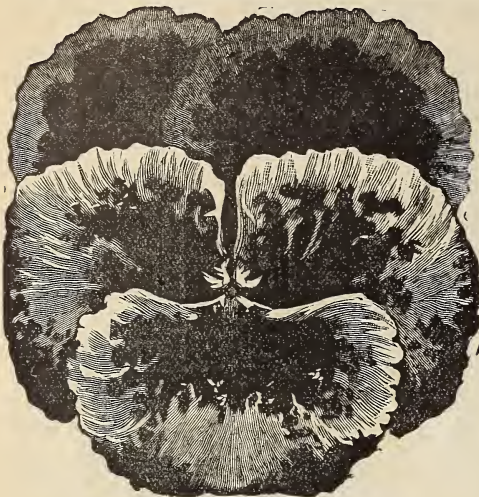
A New Type of Hollyhocks.

THIS grand new new flower is a decided improvement in more than one particular over the old-fashioned variety. Its first point of merit is the fine transparent, fringed Chrysanthemum-shaped flowers; which look as though they were made up of crushed silk; so fine are these flowers in texture that one would never suspect they were related to the old-style Hollyhock. One has to see this plant in bloom to appreciate its clear, transparent colors, which make a row shine with rainbow effect. We advise everybody who has a garden no matter how large or small to sow a packet of seed of this beautiful plant.

The "Allegheny" is a perpetual bloomer, as it has from two to four buds at base of each leaf where the old style has only one. All of these buds develop into flowers in rotation, the largest buds first, then the smaller ones, and so on until they have all opened up to beautiful flowers. This is the greatest novelty among flowers for years. The great height of the column, like pyramidal spikes, thickly studded with flowers, adds materially to the decorative value, and unless one has seen this new plant in front of a porch one would never suspect the ornamental possibilities of the Allegheny. If watered well they grow wonderfully high, if watered scantily or not at all they grow to a less height. As cut flowers they are immense. A plate filled with these flowers is a handsome thing to look at, and as flowers to wear they are wonderfully lasting. The colors are shell pink, rose and ruby red, a shade or two deeper at the center, and exquisitely tinted towards the edge. The flowers do not, as on the other double Hollyhocks, rot on the stems, but drop as soon as they fade. The illustration gives an idea of these flowers, but does not nearly do them justice, as the fine graceful appearance and peerless shading cannot be reproduced; such colors are found only in silks. Extra choice mixed seeds. Price, 10 cents per pkt., 3 pkts. for 25 cents.

NEW GIANT EMPEROR PANSIES.

The Newest and Largest Strain to Date.



METEOR

GIANT GOLDEN YELLOW 5-SPOT—Grand and magnificent; each has a dark blotch on each petal, with rigid stocks of great substance. pkt. 10 cts., 3 for 25 cts.

SPECIAL OFFER—For 85 cents I will send one packet of each of the Giant Emperor Pansies, including one packet of the Giant Emperor Mixture.

GIANT EMPEROR PANSY MIXTURE—This includes all the above new sorts of the Emperor strain, and is without doubt the finest mixture in the world. Contains all the newest shades, the richest colors that can be found, and unsurpassed by any other firm. pkt. 15 cts., 2 for 25 cts., 5 pkts. for 50 cts.

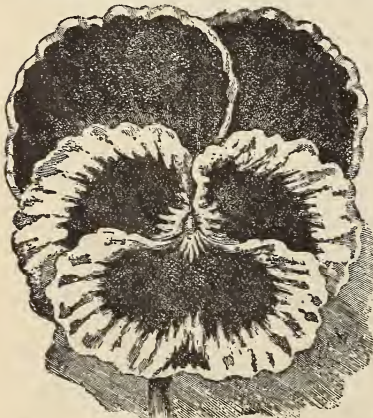
NEW IMPROVED IMPERIAL PANSIES.

BLACK PRINCE—The flowers are enormous, of great substance and quite distinct in color. The rich, glossy black has a peculiarly soft, velvety appearance, hitherto unknown. The flowers are of fine circular form, carried upright, well above the foliage. pkt. 10 cts.

GIANT TRIMARDEAU PANSIES—These remarkably large pansies, for size of flower and robust growth, eclipse any known strain. The flowers are of immense size and splendid shape, and stand well above the foliage, each flower distinctly marked with three large blotches. pkt. 10 cts.

ODIER—Superb five-blotched flowers. pkt. 10 cts.

PELARGONIFLORA—Flowers showing the beautiful shades and markings of Pelargonium. pkt. 10 cts.



MAMMOTH BUTTERFLY



FREYA

RED RIDING HOOD—The flowers are of good size, fine circular form and of the most brilliant, solid red. pkt. 10 cts.

IMPROVED STRIPED—Very large, perfectly formed flowers of the most brilliant and exquisite tints of coloring, each flower being handsomely striped. pkt. 10 cts.

"RAINBOW"—Upper petals sky blue, edged with violet; lower petals are most purple, sometimes on a white, sometimes on a yellow ground, marbled, spotted. pkt. 10 cts.

FIRE KING—Three lower petals have each a large blotch of deep brown-red or magenta, margined with yellow, while the upper petals are of a bright reddish brown, of a really fiery shade. pkt. 10 cts.

PEACOCK—A grand fancy colored flower, petals edged with a thin white line, within which is a space of purplish crimson, passing into a rich central blotch of deep blue, shading to black. pkt. 10 cts.

YELLOW PRINCE—Of perfect form and color, pure golden yellow, with the three lower petals distinctly marked with a large, double-purplish blotch. It is of very compact, bushy growth and free-flowering. pkt. 10 cts.

MAMMOTH BUTTERFLY—A most beautiful strain of Pansies with matchless form of beauty. pkt. 10 cts.

SNOW QUEEN—Pure glistening satiny white, without blotches. Wonderfully profuse bloomer. pkt. 10 cts.

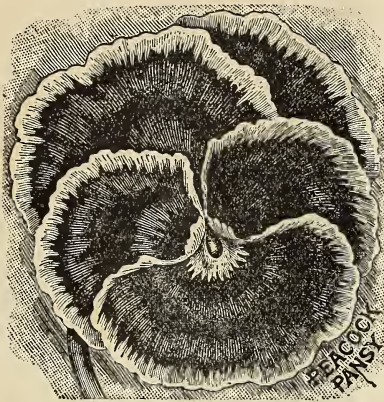
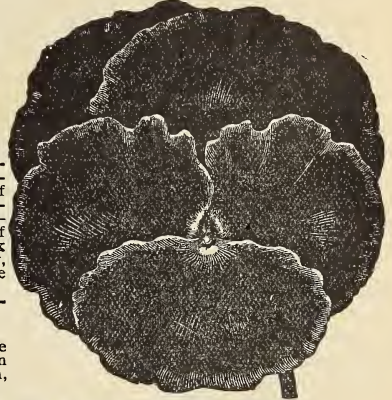
SPECIAL OFFER—I will send one packet each of the above New Improved Imperial Pansies including one packet of the "New Superb" Prize Pansy mixture for 75 cents.

New Giant Pansy, PRESIDENT MCKINLEY—Introduced last year Produces rounded flowers of fine form, from 2 1/4 to 3 inches across. The ground color is a deep rich golden-yellow; but each is so heavily blotched that on the face this coloring appears only as a broad border or edging. The central portion is so deeply blotched that it appears a deep velvety black, but is really a reddish-brown. Per pkt., 15 cents, 2 for 25 cents.

All of the Following Varieties of Pansies at the Uniform Price of 3 Cents Per Packet.

PANSY, AZURE BLUE—Very fine; beautiful shade.
 PANSY, BRONZE COLOR—A new and striking color.
 PANSY, DARK PURPLE—Rich dark purple.
 PANSY, DARK BLUE—Very rich, lasting.
 PANSY, KING OF THE BLACKS—Almost a coal black; beauty.
 PANSY, LIGHT BLUE—very rich and lasting.
 PANSY, MAHOGANY COLORED—Beautiful.
 PANSY, PURE YELLOW—True to color.
 PANSY, RED—Bright coppery colors, red shades.
 PANSY, STRIPED AND MOTTLED—Fine.
 PANSY, VIOLET—With white border.
 PANSY, WHITE—Sometimes marked purple.
 PANSY, YELLOW MARGINED—Beautiful.
 PANSY, EXTRA FINE MIXED—Above 13 varieties mixed. pkt 5 cts; 6 pkts for 25 cts.
 SPECIAL OFFER—I will send one package of each of the above 13 varieties, priced at 3 cents each, for 30 cents.

NEW GIANT PANSY
BLACK PRINCE



THE NEW SUPERB PANSY MIXTURE.

A combination of the finest French and German Prize Exhibition Varieties. The labor of many years of careful cultivation and constant selection has resulted in an almost endless variety of constant shades of color and good circular substance, and extra large-sized flowers. Embrace all solid and self-colors, delicately shaded; five-spotted on backgrounds of every color; large spotted; edged or bordered; flowers of various colors, each with distinct rim of white, yellow or blue; dark and light marbled varieties; striped flowers of striking beauty, blotched, veined, mottled and margined in combinations that would be thought impossible. pkt 10 cts, 3 pkts for 25 cts.

SWEET SCENTED PANSIES.

This lovely new class is the result of crossing the Pansy with the Violet, retaining the Violet perfume, with Pansy blooms 2 inches in diameter, in many colors, including pure white, yellow, black, maroon, striped, blotched, etc. Mixed colors. pkt 10 cts, 3 for 25 cts.

VIOLAS OR NEW TUFTED PANSIES.

For years these hardy, tufted Pansies have grown in England, where they are most extensively used for borders, but they were always propagated by cuttings. I have succeeded in securing a limited amount of seed. The plants grow in dense, compact little bushes, which are completely covered with their bright flowers from early Spring until late in the Fall. The colors range in all shades of white, pink, blue, yellow, violet and purple, as self-colors, or in combinations. It is a decorative plant of the highest order, and we feel sure it will soon be as universally grown in this country as it has been for years in England. Per pkt 10 cts, 3 pkts 25 cts.

NEW GIANT RUFFLED PANSY, "MASTERPIECE."

This superb new Pansy is distinct from all others in the form of flowers, the border of every petal being conspicuously undulated and curled, as shown in our illustration. The flowers are extremely large and nearly all of them exhibit this peculiarity. The curled petals give the flowers a fuller and more globular appearance than those of other classes of Pansy. This new class is remarkable also for the wonderful combinations of color which it shows, including some tints hitherto unknown in Pansies. The plants are very vigorous and bloom profusely. Per pkt 25 cts.



NEW TUFTED PANSIES

PETUNIAS.

PETUNIA, BLOTCHED AND STRIPED—A magnificent strain producing a great profusion of crimson and white flowers, beautifully blotched, striped and marked. Flowers very large and plants completely covered with bloom the whole season. 5 cts.

PETUNIA, HYBRID GRANDIFLORA—A very charming race of unusual beauty. The flowers are of a very large size and deeply fringed; they are of various rich, deep colors, beautifully blotched, marbled, fringed and variegated. pkt 5 cts.

PETUNIA HYBRID, FINEST MIXED—A good mixture, embracing all colors, including striped and blotched varieties; very profuse flowering and excellent for bedding or massing. pkt 3 cts.

BEST DOUBLE PETUNIA—In raising plants from this seed great care should be taken to preserve the smallest and weakest plants, as these are the ones that bear the finest double flowers. pkt, 25 cts.



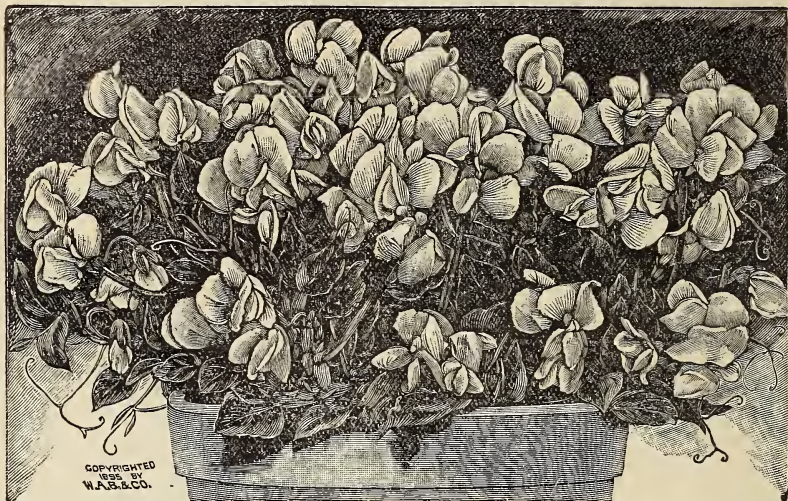
Selection of the Best New and Choicest Sweet Peas

New Dwarf Cupid Sweet Peas.

DO NOT GROW,
OVER 6 to 8 INS.
.. HIGH ..

PRICE

Per Pkt. 5 cents,
any variety.
Ounce 15 Cents.
¼ Pound 35 Cents,
Postpaid.



AMERICA—Its color is a white ground and through the center of the standard is a wide crimson-scarlet bar, veined with fine scarlet lines toward the edges of the standards.

AURORA—Flowers very large, of fine substance, three and four on a stem. Color, flaked and striped bright orange salmon on a white ground.

BLANCHE BURPEE—Giant white. Without doubt the finest white in existence. The flowers very large and freely produced. pkt. 5 cts., oz. 10 cts.

BRILLIANT—Color, rich bright crimson scarlet, three flowers on a stem.

WHITE CUPID, New—Dwarf; does not grow over six inches high. Flowers pure waxy white and borne three on a stem; wonderfully free blooming. The finest plants for bedding and planting in the borders. Bloom until frost.

PINK CUPID—In habit and manner of growth it is strictly a Cupid, spreading from the root, from a foot to eighteen inches around, growing from six to eight inches high and shooting up stems about six inches long, which bear in full bloom at once from three to four hundred large flowers, and all borne close to the end of the stem.

CAPTIVATION—A light purple magenta; an entirely new color among Sweet Peas.

CELESTIAL—Of beautiful form; color, most pleasing azure-blue, three and four flowers to a stem. A good one.

COUNTRESS OF ABERDEEN—White, margined with pale pink, of fine form. A very charming flower.

CROWN JEWEL—Creamy white, veined violet; very best of Eckford's 96 set. Greatest size and form.

GRAY FRIAR—A beautiful watered purple on white ground. Large, hooded form, three and four on a stem.

GOLDEN GATE—Form, hooded; three and four flowers to a stem. Standard soft, pinkish mauve, wings lavender.

JUANITA—Color, pure white, delicately lined and striped with pale lavender.

LITTLE DORRIT—Pink and white.

LOVELY—A good shell pink of grand form.

MARS—A grand sort, magnificent form; intense scarlet.

PRIMA DONNA—A beautiful rose pink of great merit.

ROYAL ROSE—Bright pink and bluish white, about twice as good as Apple Blossom.

RED RIDING HOOD—Color, rosy pink shaded bluish white. The most productive and sweetest of all.

DAYBREAK—Fine: has a white ground and on the back of the standard is a crimson scarlet cloud which shows through in fine veins and network, giving the front a watered effect, wings white, slightly flaked with crimson.

SPECIAL OFFER—For 75 cents I will send you the entire set of 20 sorts of the newest, New Sweet Peas. This offer is without parallel, compare it others. No other discount.

PERFECTION MIXTURE OF THE NEWEST SWEET PEAS—This mixture is made by myself in equal proportions of the above varieties, thus my patrons can be assured of getting the best assortment it is possible to obtain. pkt. 5 cts., oz. 15 cts., ¼ pd. 30 cts., pd. \$1.00, postpaid.

BEST STANDARD VARIETIES OF SWEET PEAS.

All at the Uniform Price of 3 cts. per Pkt., Ounce 10 cts., Except Where Noted.

APPLE BLOSSOM—Large flowers, shaded pink and rose.

BOREATTON—Splendid, deep dark maroon blossom.

BLANCHE FERRY—Large pink and white flowers.

BLUSHING BEAUTY—A pure white of exquisite form and immense size. pkt 5 cts., oz 15 cts.

COUNTRESS OF RADNOR—Light and dark mauve.

CAPTAIN OF THE BLUES—Wings attractive blue.

EMILY HENDERSON—Pure white; very chaste.

FIREFLY—Intense brilliant carmine.

INVINCIBLE CARMINE—Intense crimson scarlet.

LOTTIE ECKFORD—Large, creamy white flowers; distinctly marked with a narrow edging of blue.

LADY PENZANCE—A beautiful rosy pink, touching orange wings darker and purer pink. pkt 5 cts, oz 15 cts.

LEMON QUEEN—Flowers of the largest size; coloring is white, tinted softly with lemon, pkt 5 cts, oz 15 cts.

MRS. ECKFORD—Best yellow, delicate sulphur.

MRS. SANKEY—Remarkably large size and a pure white.

MRS. GLADSTONE—Flowers buff and soft pink, changing to a beautiful pale blush. Standard pink.

NEW DOUBLE SWEET PEAS—Are of incomparable beauty. They do not always come double, but usually about 50 per cent. pkt 5 cts, oz 15 cts.

PRIMROSE—Distinct as the nearest approach to yellow; of pale primrose yellow.

PRINCESS BEATRICE—A uniform bright rose pink.

VIOLET QUEEN—Deep mauve; wings light blue.

ECKFORD'S NEW SWEET PEAS, MIXED—This is a mixture of all the above and other distinct varieties, and I can recommend it as the finest strain of Mixed Sweet Peas ever offered for sale. pkt 3 cts, oz 10 cts, ¼ pd 20 cts, pd 60 cts.



NEW AGERATUM BLUE PERFECTION

ADLUMIA CHIRRHOSA—The Mountain Fringe or Allegheny Vine. An attractive and beautiful plant, flowering the first season. Of graceful habit. Pale green, delicate foliage, with clusters of small, rosy-lilac flowers. Fifteen feet. pkt. 6 cts.

ANCHUSA ITALICA—Intense blue flowers in large panicles. pkt. 3 cts.

ARISTOLOCHIA SIPHO—Dutchman's Pipe. Fine, hardy climber, curiously shaped flowers resembling a pipe. 5c.

ARISTOLOCHIA ELEGANS—An elegant Summer Climber of rapid and dense growth. It bears even on small plants handsome flowers of a rich purple color, ornamented throughout with irregular markings of creamy white; center of flower deep yellow. pkt. 10 cts.

ACACIA MIXED—Decorative greenhouse shrubs with elegant foliage; flowers yellow, white or red. pkt. 5 cts.

ALYSSUM SAXATILE (GOLD DUST)—Small, golden yellow flowers. Hardy perennial. pkt. 8 cts.

AQUILEGIA (COLUMBINE), SINGLE MIXED—A great variety of colors. pkt. 3 cts.

AQUILEGIA (COLUMBINE), FINE DOUBLE MIXED—A very choice assortment of the best. pkt. 3 cts.

AQUILEGIA CHRYSANTHA—Beautiful, long, golden yellow spurred flowers. pkt. 5 cts.

ADONIS—Ornamental garden plants of easy culture, flowering freely; graceful, feathery foliage. pkt. 3 cts.

ACONITUM—(Monkshood.) Free growing plants for borders or windows. Mixed colors. pkt. 3 cts.

ANEMONE CORONARIA, MIXED—Large, saucer-shaped flowers of many colors. Showy, hardy plants. pkt. 3 cts.

ARABIS ALPINA—One of the earliest of all Spring flowers; spreading tufts with pure white flowers. pkt. 5 cts.

ASPARAGUS SPRENGERI—One of the best plants to grow in suspended baskets, for greenhouse or for out doors in the Summer. The fronds frequently grow four feet long and are now considered indispensable in all fine decorations; grows readily from seed. Pkt. 15 cts.

ASPARAGUS TENNUISSIMUS—An indoor climbing plant of exquisite beauty, with graceful, feathery lace-like foliage; fine for cutting. Pkt. 10 cts.

ASPARAGUS PLUMOSUS NANUS—A greenhouse perennial climber, with exquisitely graceful and feathery lace-like foliage; extensively grown by florists for decorating purposes. Per packet of 5 seeds, 10 cts.



GIANT FLOWERED BLUE BROWALLIA

NEW AGERATUM BLUE PERFECTION—This new variety is the darkest colored of all large flowering kinds. The color is a deep amethyst blue, of dwarf compact growth, a very valuable plant for borders of walks, flower beds, etc. See cut. Price, per pkt. 10 cts.

AGERATUM MEXICANUM—The species most extensively grown. Height 12½ inches. Blue or white. pkt. 3 cts.

AGERATUM IMPERIAL DWARF—Dwarf variety, only growing to a height of about nine inches. Blue or white. pkt. 3 cts.

AMPELOPSIS VEITCHI—Boston or Japan Ivy. One of the most valuable of our hardy climbing plants, clinging with great tenacity to wood as well as brick or stone. Beautiful foliage; grows rapidly from seed. pkt. 5 cts.



ASPARAGUS SPRENGERI

BEGONIA VERNON.

Plants grow rapidly and thrive amazingly under our hot Summer sun. The flowers are borne in constant profusion from early Summer until late Autumn. The color is deep red magnificently set off by the abundant and vigorous foliage, which is waxy and glossy, spotted and margined, bronze-purple. Few other flowering plants as rich and handsome can be so easily raised from seed and come to full perfection in so short a time. Per pkt. 10 cts., 3 pkts for 25 cts.

BEGONIA, TUBEROUS ROOTED HYBRIDS—These very charming and showy Begonias, with their orchid-like flowers and rich tropical foliage, can be planted in light, moderately rich soil with a liberal mixture of sand. Seedlings raised from sowings made early in the year will bloom freely in the course of Summer. Fine mixed. Pkt. 15 cts., 2 for 25 cts.

BALLOON-VINE—*Cardiospermum*. Of rapid growth, with pretty foliage and inflated capsules. pkt. 5 cts.

BRAZILIAN MORNING GLORY—The most magnificent Summer climber in my collection; makes a growth of 30 to 40 feet in the course of the Summer. The flowers, which open in the morning, are three inches or more across, of a beautiful rose color, and are borne in large clusters very freely from July to frost. pkt. 5 cts.

BREACHYOME IBERIDIFLORA—(Swan River Daisy.) Very effective, dwarf growing plants, covered for months with a profusion of single daisy-like flowers; blue and mixed; six inches. pkt. 3 cts.

BROWALLIA—Handsome plants; eighteen inches tall, with shining green foliage and bright blue and pure white flowers mixed. pkt. 3 cts.

NEW GIANT BROWALLIA—Without doubt the most beautiful of all the Browallias. Plants only a foot high, covered with an abundance of large sky-blue flowers. For beds, borders or pots there is hardly another plant with blue flowers that compares with it. pkt. 10 cts., 3 pkts. for 25 cts.

CALLA ÆTHIOPICA—The popular Calla Lily. Easily grown from seed, flowering the second year. Pkt 5 cts.

CANARY BIRD FLOWER—This is one of the most beautiful of climbers, with handsomely fringed, rich yellow and delicate flowers. Pkt 3 cts.

COBÆA SCANDENS—Of rapid growth and large size, with fine foliage. This is one of the most graceful climbers. Large, bell-shaped flowers of a beautiful violet hue. Pkt 5c.

GENTAUREA MARGARET—A very handsome plant which grows about 18 inches high, and produces large, pure white flowers of the sweetest fragrance. Being produced on long, stiff stems, the flowers are most admirably adapted for bouquets, vases, etc., especially as they keep in good condition for a week after being cut. It is as easily grown as a Bachelor's Button, to which family it belongs. Pkt 5 cts.



BEGONIA TUBEROUS ROOTED



BEGONIA VERNON



COSMOS NEW GIANT VARIETIES.

COSMOS, NEW GIANT FANCY—This new strain of Cosmos is notable both for purity of color and the gigantic size of its flowers. The broad petals overlap each other producing perfectly circular flowers of splendid substance, which measure 4 inches across, sometimes even reaching 5 inches in diameter. Pkt. 10 cts., 3 pkts. 25 cts.

COSMOS, NEW YELLOW—A distinct new variety, with beautiful yellow flowers, blooming from early Summer to late in the Fall. Pkt 10 cts.

COSMOS, NEW GIANT WHITE AND PINK—Very grand and beautiful; giant flowers of purest white, sometimes very lightly tinged with pink. pkt. 5 cts.

COSMOS, THE KLONDIKE, New—The so-called Yellow Cosmos which never offered is not a Cosmos at all! It is simply the old small-flowered *Bidens ferulifolia*. This variety from Mexico, now first introduced, produced at Fordhook the past Summer magnificent bright yellow flowers, $2\frac{1}{2}$ to 3 inches in diameter. pkt. 10 cts., 3 pkts. for 25 cts.

COSMOS DAWN—This new variety comes into bloom in July and continues to flower until cut down by severe frost. Of good size; the handsome circular flowers are white, with a delicate tint of rose at the base of the petals. The plants are of a compact, bushy growth, about four and one-half feet. Valuable particularly for the North, where the seasons are too short for other strains. per pkt. 10 cts., 3 pkts. for 25 cts.

MARGUERITE CARNATIONS, CALIFORNIA GIANTS—This is a greatly improved strain of the New Marguerite Carnation, which is so popular because it produces fine, fragrant, double flowers in only four months from seed. The plants are dwarf and compact, though of vigorous growth. Comes into bloom earlier than the Marguerites. Produces much larger and more finely double flowers, continue to bloom profusely until the flower buds are destroyed by heavy frosts. Finest colors, mixed, per pkt. 15 cts., 2 pkts for 25 cts.

NEW DWARF MARGARET CARNATION—Like its parent, the Margaret, this Carnation blooms in 4 months from sowing, but it is much in advance of the type as the new French Carnas are ahead of the old "Indian Shot." The flowers are larger, more double and the variety of colors is infinitely greater. The plants grow about 15 inches high, flowers always erect. If taken up in the Fall, the plants bloom all Winter. pkt. 10 cts., 3 pkts. for 25 cts.

CALCEOLARIA, PRIZE STRAIN—The blooms are remarkable for their oddness of shape, for their size, and for richness, diversity and delicacy of coloring. Seeds may be sown from May to August, in light, rich, well sifted soil, and frequently transplanted. Tender perennials. One foot in height. pkt. 10 cts., 3 for 25 cts.

CACTUS, MIXED VARIETIES—Beautiful plants for pot culture in the window or greenhouse. pkt. 5 cts.

COREOPSIS LANCEOLATA—Large golden yellow flowers; profuse bloomer; keeps in flower throughout the Summer; one of the best hardy plants. pkt. 3 cts.

CATCHFLY, MIXED—Showy, early-flowering garden annuals. pkt. 3 cts.



CALCEOLARIA PRIZE FLOWERS

COLEUS, SUNSET STRAIN OF LARGE LEAVED—Embracing varieties of extraordinary merit, all with richly colored leaves of large size. The foliage is beautifully lacinated, of intensely brilliant colors, variegated in every conceivable manner, and nearly every plant is entirely different from the other. Very easily raised from seed, and one packet will produce an almost endless variety. pkt. 10 cts.

CHRYSANTHEMUM TRICOLOR; MIXED VARIETIES—Distinct and valuable for cut flowers. pkt. 3 cts.

CHRYSANTHEMUM INODORUM PLENISSIMUM—Although a perennial, it flowers abundantly the first year from seed, each plant producing hundreds of beautiful, perfectly double snow-white flowers. pkt. 3 cts.

CHRYSANTHEMUM PERENNIAL—As grown formerly in the old-time garden these were entirely hardy, the plants living out during the winter and flowering before frost in the fall. They have been hybridized and improved greatly in size, form and colorings by the florists, but with a loss of hardiness and blooming at a later period in the fall, needing the protection of a greenhouse to bring them to full development, except in especially favored locations. By planting these fine varieties in California in the open ground I have secured a strain of seed, which, sown in the open ground early in the spring at Fordhook Farms, produces fine plants which flower quite freely in the fall. They are entirely hardy, living out all winter and growing stronger each year, and at the same time produce flowers more than double the size of the old-fashioned varieties, while they embrace all the distinct types of flowers and many of the rich shadings of color seen in the finest greenhouse varieties. per pkt. 10 cts., or 3 pkts for 25 cts.



CENTROSEMA GRANDIFLORA.

CLEMATIS.

CLEMATIS PANICULATA—One of the finest hardy perennials in cultivation, twelve feet, and covered from the ground to the summit with pure white, deliciously fragrant flowers. pkt. 10 cts.

CLEMATIS HYBRIDA MIXED—Rapid growing climbers, fine for arbors and verandas, the small varieties bloom in clusters, and are very fragrant; fifteen feet. pkt. 10 cts.

CLEMATIS FLAMULA—Virgin's Bower. Beautiful clusters of small white, fragrant flowers. pkt. 5 cts.



er each year, and at the same time produce flowers more than double the size of the old-fashioned varieties, while they embrace all the distinct types of flowers and many of the rich shadings of color seen in the finest greenhouse varieties. per pkt. 10 cts., or 3 pkts for 25 cts.

CHRYSANTHEMUM—"French Marguerites" or "Painted Daicies." The plants grow 12 to 15 inches high, and produce on long stems beautiful large flowers of many bright colors, having the appearance of being laid out with a paint brush. pkt. 5 cts.

CHRYSANTHEMUM, GOLDEN FEATHER—The dark velvety disk in the center is surrounded by a circle of bright golden yellow, followed by another clear-cut circle of crimson; beautiful golden foliage. pkt. 5 cts.

CENTROSEMA GRANDIFLORA—(The Butterfly Pea.) A hardy perennial vine of great beauty, which blooms early in June from seed sown in April, and bears in the greatest profusion inverted pea-shaped flowers, ranging in color from a rosy violet to a reddish purple, with a broad feathered white marking through the center. Very fragrant. per pkt. 10 cts. (See cut at left.)



CHRYSANTHEMUM PERENNIAL SHOW FLOWERS

NEW CELOSIA, OSTRICH FEATHER—This new Feathered Celosia has very large bright crimson and orange plumes, which are exquisitely curved and curled in exact resemblance of an ostrich feather. The plant grows about three feet high, is of handsome pyramidal form, and makes one of the most effective ornamental plants for either pot or outdoor culture. It is as easily grown as the ordinary Cockscomb. Price, per pkt 5 cts.

CLEOME PUNGENS—(Giant Spider Plant.) Curious heads of bright rose-colored flowers. Pkt 3 cts.

CENTAUREA GYMNOCARPA—Finely cut, arching, silvery gray leaves. Pkt 3 cts.

CENTAUREA CYANUS—(Cornflower or Bluebottle).—A popular old-fashioned flower. Mixed colors. Pkt 3 cts.

CENTAUREA MOSCHATUS—(Sweet Sultan.) Showy border plant. Mixed colors. Pkt 3 cts.

CROZY'S NEW DWARF CANNAS—Bloom freely the first year from seed. They are much less expensive and incomparably more beautiful for bedding than the best geraniums. The root can be kept in the cellar over Winter, and each clump will give six to eight good roots for planting the following Spring. The seed we offer has been saved from the finest varieties. Pkt 5 cts.

CALLIOPSIS DRUMMONDI—(Golden Wave.) Bushy, compact plants, covered all Summer with bright, golden flowers, two inches across, distinctly marked with dark brown center. Pkt 3 cts.

CALLIOPSIS, FINE MIXED—Shades of yellow, orange, and reddish brown. Pkt 3 cts.

CALENDULA ORIOLE—Large flowering, bright yellow. Pkt 3 cts.

CONVOLVULUS MAJOR—(Morning Glory.) Well known and universally grown climber. Pkt 3 cts, oz 10 cts.

CONVOLVULUS MINOR—(Dwarf Morning Glory.) Grows to a height of one foot only. Mixed colors. Pkt 3 cts.

CONVOLVULUS, FINE MIXED—Embracing a great variety of colors. Pkt 3 cts, oz 10 cts.

CONVOLVULUS, STRIPED—(Morning Glory).—Large, handsome flowers of great beauty; they are variously striped and blotched with red, blue and rose on a white ground. Pkt 3c.

CALENDULA METEOR—Bright yellow, striped orange. Fine and distinct. Pkt 3 cts.

CYCLAMEN PERSICUM—Most charming bulbous-rooted plants, with beautiful foliage, variegated in different shades of green, and richly colored orchid-like flowers, Splendid mixed. Pkt 10 cts.

CYCLAMEN, GIGANTEUM, MIXED—Beautifully mottled leaves and large flowers of rich colors. Pkt 10 cts.

CYPRESS VINE—One of the most elegant vines with delicate, fern-like foliage and beautiful star-shaped flowers. Mixed colors. Pkt 3 cts.

CYPRESS VINE, SCARLET—Rich scarlet. Pkt 3 cts.

CYPRESS VINE, WHITE—Purest paper-white. Pkt 3 cts.

CAMPANULA (CANTERBURY BELLS) FINE SINGLE MIXED—A choice assortment of colors. Pkt 3 cts

CAMPANULA, CHOICE DOUBLE MIXED—All double varieties mixed. Pkt 3 cts.



CYCLAMEN PERSICUM



DWARF CANNAS

CARNATION—Not being difficult of cultivation the plant should be found in every garden, where its scarlet, crimson, rose and pink make a wonderful show of tints. Fine mixed. Pkt 3 cts.

CINERARIA HYBRIDA—This is one of the brightest and best of house plants, blooming most profusely during the late Winter and early Spring. Of richest color; crimson, magenta, violet, blue, white and variegated. Keep the plants in a cool, shady place during the Summer. Large flowering; finest mixed. Pkt 15 cts.

CINERARIA MARITIMA—(Dusty Miller.) Very ornamental for bedding and as a decorative plant. Of dwarf compact habit, with handsome silvery-white foliage; can be grown very easily from seed. Pkt 3 cts.

CACALIA—(Tassel Flower.) Small, tassel-like blooms, often called Flora's Paint Brush. Useful for cutting. Bright scarlet and yellow mixed. Pkt 3 cts.

DELPHINIUM (LARKSPUR) TALL ROCKET—Double mixed. pkt. 3 cts.

DELPHINIUM (LARKSPUR) EMPEROR—Splendid, a single plant having fifty or more erect spikes of flowers. Delicate mixed colors. pkt 3 cts.

DELPHINIUM (LARKSPUR) DOUBLE DWARF ROCKET—Finest mixed. pkt. 3 cts.

DELPHINIUM (LARKSPUR) FORMOSUM—Flowers very deep blue, in tall, much crowded spikes. pkt. 3 cts.

DELPHINIUM (LARKSPUR) HYBRIDUM—(Bee Larkspur.) Grandest of perennial species. Tall spikes, 3 to 4 feet, light blue, each a black, bee-like spot in center. pkt 3 cts.

DELPHINIUM (LARKSPUR) CHINESE—(Dwarf Chinese Lark-spur)—Grow 1 1/2 feet high; free-blooming; mixed. pkt. 3 cts.

DRAEONA INDIVISA—A foliage plant, used extensively for the centers of vases, and for pot culture. thin, arching leaves, two to three feet. pkt. 5 cts.

NEW LARGE FANCY DIANTHUS ORIENTAL BEAUTIES—Magnificent, new strain, large flowering Dianthus from Southern Japan. Splendid flowers, 3 to 4 inches in diameter; most exquisitely formed, petals full, overlapping, crinkled and lacinated. Color, pure white through shades of pink and crimson, they are hardy, perpetual bloomers. pkt. 15 cts., 2 pkts. for 25 cts.



CONVOLVULUS

DAHLIAS.

Dahlias are grown easily from seed, flowering freely the first season. Sow the seed thinly in drills one-half inch deep in the hot-bed, or in shallow boxes of rich soil in the house early in the Spring. When well started transplant to other boxes or small flower pots, and transplant to the open ground when the trees are out in full leaf, setting the plants two feet or more apart each way. Furnish each plant with a stout stake, and trim off the side shoots so as to throw all the strength into the central stem to promote early flowering. In the fall the tops may be cut off, the bulbs dug and wintered in a warm cellar. Plants raised from seed will give a wide range of beautiful colorings, and nearly all the plants will produce fine double flowers. Many gardeners admire the single flowers, even more than the double ones.

EXTRA CHOICE, LARGE FLOWERING DOUBLE—This splendid strain is saved from a large collection of perfectly double varieties. pkt 10 cts, 3 for 25 cts.

SUPERB SINGLE DAHLIAS—These are easily raised from seed; they begin to flower in July. pkt 10 cts.

DOUBLE DAISY—Daisies are easily raised from Spring-sown seed, and come into flowering in very short time. With protection they will withstand the Winter. Fine double mixed. pkt 5 cts.

DAISY LONGFELLOW—Remarkable for the unusual size and doubleness of its dark rose flowers. pkt 10 cts.

DAISY SNOWBALL—Large flowers, perfectly double, of purest white. pkt 10 cts.

DIGITALIS (FOX-GLOVE) FINE MIXED—Long racemes of beautifully spotted flowers. pkt 3 cts.

DATURA—(Angel's Trumpet), or Sweet Nightingale. Very showy, large branching plants, growing three to five feet high, bearing immense trumpet shaped flowers six



SHOW DAHLIAS FROM SEED



DATURA



DIGITALIS



DIANTHUS. "DOUBLE SNOWFLAKE."

inches in length and very fragrant. They bloom freely from seed sown in the open ground the first season, but the roots can be taken up and kept over Winter the same as Dahlias. Mixed varieties. pkt 5 cts.

DATURA DOUBLE—Mixed colors. pkt 5c

DATURA WRIGHTII—Single white flowers. pkt 5 cts.

DIANTHUS CHINENSIS—(Double Chinese Pinks.) Very double, large flowers; magnificent color. pkt 3c.

DIANTHUS SNOWFLAKE—Pure white flowers, of immense size; very double, fringed. pkt 3 cts.

DIANTHUS CRIMSON BELLE—Very large, single dark red flowers. pkt 3 cts.

DIANTHUS DWARF FIREBALL—Brilliant blood-red, perfectly double, lacinated flowers. pkt 3 cts.

DIANTHUS MOURNING CLOAK—Large, double flowers; is a very dark mahogany, almost black; edged with white. pkt 3 cts.

DIANTHUS EASTER QUEEN—Magnificent single flowers; 2 to 3 inches across; striped and stained. pkt 3c.

DIANTHUS HEDDIWIGI—(Japan Pink.) Splendid double flowers; grows in beds or borders. pkt 3 cts.

DIANTHUS LACINIATUS—Large, single, fringed flowers; mixed. pkt 3 cts.

DIANTHUS LACINIATUS fl. pl.—Large, perfectly double and fringed flowers; finest mixed. pkt 5 cts.

DIANTHUS PLUMARIUS SINGLE MIXED—(Hardy Feathered Pheasant's Eye Pink.) Large, single, fragrant flowers of beautiful colors and fringed. pkt 3c.

DIANTHUS PLUMARIUS (HARDY PINKS) DOUBLE MIXED—Double fringed flowers, fragrant, and of white crimson or purple shades, spotted and variegated. pkt 8 cts.

NEW DOUBLE DAISY, Giant Flowered White—A distinct feature, large size of its beautiful flowers, which have flat petals, of a very showy white color, perfectly double. They are produced in great abundance above the foliage, which is much larger than in the older varieties. A valuable plant for Spring decoration, grown either in the open ground or in pots. pkt. 10 cts., 3 pkts. for 25 cts.



**GAILLARDIA
ARISTATA
GRANDIFLORA**

COPYRIGHTED 1890 BY
A. BLANC.

FREESIA GIGANTEA GRANDIFLORA - A greatly improved Freesia that grows fifteen inches high. The flowers are double the size of the ordinary Freesia; the colors are pure white with yellow throat, cream yellow with orange throat, cream shaded lavender and white with lavender throat. pkt. 10 cts.

FEVERFEW - The well known double white variety. Splendid for cutting. pkt. 5 cts.

GODETIA, FINE MIXED - Many varieties, pkt. 5 cts.

GERANIUM, APPLE-SCENTED - Leaves are very fragrant. pkt. 10 cts.

GERANIUM ZONALE, EXTRA FINE MIXED - This seed has been saved from a collection of choice named sorts, and is sure to produce new and striking sorts. pkt. 10 cts.

GREVILLEA ROBUSTA - Silk Oak. A beautiful ornamental plant with fern-like foliage; easily grown from seed. pkt. 5 cts.

GAILLARDIA (BLANKET FLOWER) SALMON RED - (Sun-kissed.) Large, single flowers, salmon red, distinctly edged with bright orange. pkt. 5 cts.

GAILLARDIA PICTA LORENZIANA - (New Double Gaillardia.) Large, gay colored double flowers, produced abundantly from July until frost, and are valuable for cutting. The colors embrace sulphur, golden yellow, orange, amaranth and claret. pkt. 8 cts.

GAILLARDIA FINE MIXED - Including all other varieties. oz. 25 cts., pkt. 3 cts.



ESCHSCHOLTZIA



EUPHORBIA

ESCHSCHOLTZIA - (California Poppy.) Mixed. Flowers yellow, orange and white; leaves finely cut; height ten to twelve inches, very showy. pkt. 3 cts.

ESCHSCHOLTZIA MANDARIN - The inside of petals rich orange, outer a mandarin scarlet. pkt. 3 cts.

EUPHORBIA MARGINATA - (Snow-on-the-Mountain.) - Beautiful foliage, elegantly veined and margined with white; very showy. pkt. 3 cts.

EUPHORBIA HETEROPHYLLA - "Annual Poinsettia" or Mexican Fire Plant. Grows two to three feet high, with smooth glossy leaves. The leaves are at first entirely green, but about mid-summer, at the end of each branch appear greenish white flowers, enveloped in beautiful orange scarlet bracts, and the surrounding leaves are either blotched with vivid carmine or are carmine with green tips. pkt. 5 cts.

ERYTHRINA - (Coral Plant.) Grows about five feet high, with large spikes of deep scarlet, pea-shaped blossoms. pkt. 5 cts.

GOLDEN ROD - America's National Flower. The favorite yellow wild beauty. pkt. 3 cts.



GREVILLEA ROBUSTA



GODETIA

GLOXINIAS, NEW SUPERB PRIZE MIXED - A collection of the newest new blotched spotted and margined strains; large size, beautiful shape, profuse bloomers, colors ranging from pure white to dark blood-red, pink, lavender, indigo blue, marbled, spotted, and margined in a manner truly fascinating. Culture printed on packets. Price of choice seed mixed. pkt. 15 cts., 2 pkts. for 25 cts.

GLADIOLUS, NEW HYBRIDS - The ease with which new varieties of this magnificent flower can be raised from seed should entitle this grand mixture to a trial. It has been saved from one of the finest collections, comprising over 1,000 select named varieties of Chidisi, Lemoinei, Nanceanus and Gandavensis hybrids, carefully hand-hybridized, with a view to carrying the size, richness and variety of color, substance of flower, as well as the strength of plant, up to the highest point, and the product may be expected to produce nothing but sorts of the highest merit. per pkt. 15 cts., 2 for 25 cts.



GORGEOUS FLOWERED GLOXINIAS



GLADIOLUS NEW HYBRIDS

GYPSOPHILA ELEGANS—White perennial for bouquets, grows in any soil. pkt. 3 cts.

GYPSOPHILA PANICULATA—A graceful, hardy plant, fine for cutting for bouquets. Flowers in feathery-white panicles. pkt. 3 cts.

GOURDS, ORNAMENTAL—Summer climbers of exceedingly rapid growth and luxuriant foliage; fruits, when allowed to fully ripen on the vines, can be kept for months as curiosities. Fine mixtures. pkt. 3 cts.

DIPPER GOURD—Valuable for dippers of various sizes which will last for years. pkt. 3 cts.

DISHCLOTH GOURD—The tough, spongy lining makes an admirable lasting dishcloth. pkt. 3 cts.

SUGAR TROUGH GOURD—Very useful for various purposes; grow to hold four to ten gallons; thin, hard shells. pkt. 8 cts.

BOTTLE GOURD—Curious bottle-shaped. pkt. 3 cts.
JAPANESE NEST EGG—Resembling in color, shape and size the eggs of hens; are uninjured by cold or wet and therefore make the best nest-eggs. pkt. 5 cts.

HOLLYHOCK.

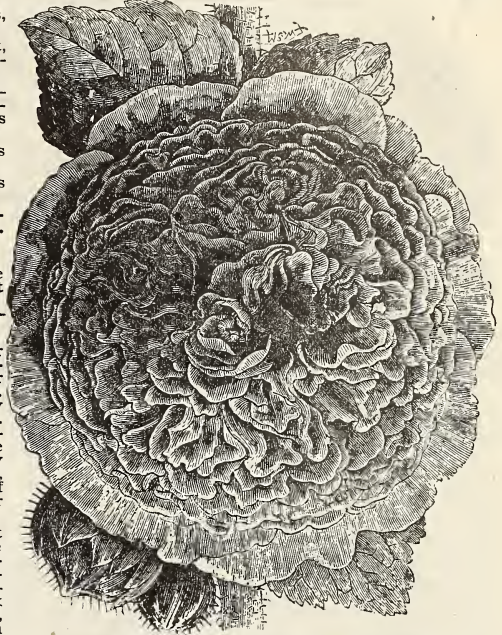
Few hardy plants combine as many good qualities, or lend themselves as readily to varied uses, as the Hollyhock. For planting in rows or groups on the lawn, or for interspersing among the shrubbery, they are invaluable. The flowers form perfect rosettes of the most lovely shades of yellow, crimson, rose, pink, orange, white, etc. It is not surprising that this old favorite should again become popular; for, by careful selection, the flowers have been so much improved that they are marvels of beauty and elegance. The Hollyhock requires a rich, deep soil, well drained, and will repay in quantity and elegance of bloom an extra care. A slight protection during Winter will be beneficial.

DOUBLE HOLLYHOCK, FORDHOOK SUPERB—A great beauty, magnificent long spikes crowded with double flowers three to four inches across, and all of the brightest color. The flowers are quite as beautiful and perfect as those of the Camellia; they are massed completely around the spikes. Beyond doubt our Fordhook Superb Hollyhocks are the finest strain in cultivation, and will prove a revelation to many unacquainted with their remarkable perfection. All colors, finest mixed. per pkt 10 cts, 3 for 25 cts.

NEW DOUBLE FRINGED ALLEGHENY HOLLYHOCKS—Of many rich colors; the grand double flowers of this new strain are remarkable for their extra large size, novel forms and graceful arrangements upon the stems. The hardy plants remain long in bloom and are most attractive. Pkt 10 cts, 3 for 25 cts. See cut on cover page.



NEW HELIOTROPE, LEMOINE'S GIANT HYBRIDS



NEW DOUBLE HOLLYHOCK FORDHOOK SUPERB

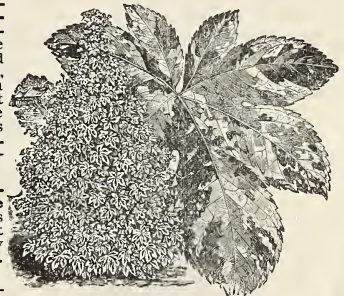
HOLLYHOCK, CHARTIER'S SUPERB DOUBLE MIXED—Of all the brightest and best colors. The perfect doubleness of the magnificent large flowers will please the most critical. pkt 5 cts.

HOLLYHOCK—Double White, Double Yellow, Double Pink, Red Rose. Separate colors. pkt 5 cts.

HUMULUS JAPONICUS VARI-EGATA—Japanese Hop. Foliage very dense and of a lively green, variegated with white. The most valuable feature is that it attains enormous dimensions very quickly. pkt 5 cts.

HELIANTHUS—(Sunflower.) The Dahia. Produces numerous bright golden-yellow flowers, double. pkt 5 cts.

HELIANTHUS—Mammoth double flowering. pkt. 5 cts



HUMULUS JAPONICA VARIEGATA

NEW HELIOTROPE, Lemoine's Giant Hybrids—Should I devote this entire page to an illustration it would fail to give an adequate idea of the grand size and rare beauty of the flower heads of this wonderful novelty. On one mammoth flower head I counted twelve thousand, nine hundred and seventy-five flowers (12,975). The trusses measure from ten to fifteen inches across. Their fragrance is delicious. The colors are from pure white through all shades of violet and blue to indigo. Even before it comes into bloom the foliage is most noticeable; its large and glossy leaves frequently measure from five to seven inches, and are borne on strong, erect stems, growing about two feet in height. Per pkt. 10 cts., 3 pkts for 25 cts.

HELIOTROPE—CHOICE MIXED OF MANY VARIETIES—pkt. 10 cts.

HELIOTROPE, DARK BOUQUET—The large flower heads are intensely dark blue in color and most deliciously fragrant; it comes true from seed. pkt. 8 cts.

HELIOTROPE, THE BLACK KING—It comes true from seed; which can be sown in the open ground with entire success. The color is unusually rich, dark purple, nearly black; undoubtedly the darkest yet developed. pkt. 8 cts.



LOBELIA WHITE GEM



LOBELIA STAR OF ISCHL

HELIOTROPE, LADY IN WHITE—This lovely variety is a fitting companion to the Black King. The same vigorous, healthy growth, while the superb large clusters of deliciously fragrant flowers are of pure white. pkt 8 cts.

HIBISCUS CALIFORNICUS—Strong-growing plants of very easy culture and exceedingly showy, the large cup-shaped flowers frequently measuring six inches across. White flowers with deep carmine center. pkt 8 cts.

HYACINTHUS CANDICANS—Giant Summer Flowering Hyacinth, of robust growth, producing spikes three feet long, of white, bell-shaped flowers, bulbs keeping dry over Winter like a Gladiolus. pkt 5 cts.

IRIS KÄMPFERI—(Japan Iris.) A perfectly hardy bulbous plant, with large, showy flowers; pure white and of many shades of blue and purple. pkt 5 cts.

NEW GIANT IMPERIAL JAPANESE IPOMCEAS, OR MORNING GLORIES—Here we have from Japan the new Imperial Morning Glory a new mammoth class of flowers. The flower garden will lack a beautiful spot if it is without a fence corner or trellis covered with these glorious blossoms; plant attains a growth of 20 feet by Midsummer. The leaves are large, heart-shaped, many of them a rich, dark color, marbled with silvery white or yellow. The flowers are really gigantic, being double the size of the ordinary kind; their main attraction, however, is not their enormous size, but their wonderful coloring. Their varieties of colors are infinite, running from snow white through all possible shades of blue, and of red from palest pink to darkest reds and purples. They are streaked, mottled, striped, marbled and bordered in wonderful fashion. To gain time, start seeds in small pots in the house in March or April and plant in a warm, sunny place. pkt 5 cts.

IPOMCEA HERDERACEA GRANDIFLORA SUPERBA ALBA—Large, fragrant, pure white flowers. pkt 5 cts.

IPOMCEA COCCINEA, STAR IPOMCEA—Of wonderful rapid growth; dense foliage, covered with hundreds of the brightest scarlet flowers; very showy. pkt 3 cts.

IPOMCEA GRANDIFLORA, STRIPED-LEAVED MIXED—Leaves green, marbled with silvery white; flowers fragrant and mostly of an intense ultramarine blue, edged with sky-blue, and with a pink throat. pkt 3 cts.

IPOMCEA "HEAVENLY BLUE"—The vines are completely covered by its sky-blue flowers, measuring four inches across; a lovely climber. pkt 5 cts.

IPOMCEA NOCTIFLORA, MOONFLOWER—It bears lovely white flowers five to six inches in diameter, with a five-pointed star in the center; the flowers open at dusk, or earlier on cloudy days, at which time they are deliciously fragrant. Start the seed in the house and set out as early as safe in the Spring. pkt 5 cts.

ICE PLANT—Mesembryanthemum Crystallinum. For vases; icy foliage. pkt 5 cts.

LATHYRUS—(Perennial Peas.) They are in full bloom early in the Spring before the others have begun to flower, bearing magnificent clusters of flowers. Perfectly hardy; easily grown; mixed. pkt 3 cts.

LA VENDER—An ornamental hardy perennial, bearing long spikes of fragrant blue flowers. pkt 3 cts.

LOBELIA—Elegant and useful, of easy culture, and well adapted to bedding, edging pots or rockeries. Fine mixed. pkt 3 cts.

LOBELIA WHITE GEM—This lovely new compact annual Lobelia grows only four to five inches high, and is densely covered with pure white flowers. pkt 5 cts.

LOBELIA, STAR OF ISCHL—A very dwarf, erect growth, only four to six inches high, and forming dense balls of charming dark blue flowers. pkt 5 cts.

LYNARIA CYMBALARIA—(Kenilworth Ivy.) A hardy and perennial trailing variety, suitable for baskets, vases, pots and rockwork. 5c.

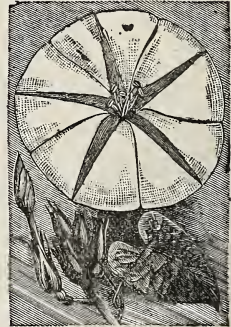
LANTANA, FINEST MIXED—Well-known shrubby plants, with clusters of Verbena-like flowers, making a grand display the first season. pkt 8 cts.

MIGNONETTE, LARGE FLOWERING—The common Sweet Mignonette. Mixed colors. pkt 3 cts.



COPYRIGHTED 1895 BY A. BLAKE

IMPERIAL JAPANESE IPOMCEAS



MOON FLOWER



MIGNONETTE NEW GIANT RED



LANTANAS

MIGNONETTE, NEW GIANT FLOWERED RED—Of beautiful pyramidal form, compact and vigorous grower, 10 to 15 inches high and a very abundant bloomer. Flower spikes of the largest size; the single flowers of a striking red color. pkt 5 cts. See cut on opposite page.

MIGNONETTE, MACHET—A dwarf French variety with broad spikes of very fragrant red flowers. pkt 3 cts.

MIGNONETTE, GOLDEN MACHET—Golden yellow flowers, dense dwarf growth. pkt 3 cts.

MIGNONETTE, WHITE GIANT SPIRAL—Quite showy in growth with very long spikes of bloom. pkt 5 cts.

MIGNONETTE, MIXED—All varieties mixed. pkt 3 cts.

MORMORDICA BALSAMINA—(Balsam Apple.) A very beautiful, climbing plant, with handsome apple-shaped fruits, which have great medicinal properties. pkt. 5 cts.

MALOPE GRANDIFLORA—The plant grows 18 to 20 inches high, and bears beautiful, large, single flowers. Mixed crimson, rose and white. pkt. 5 cts.

MARVEL OF PERU—Mirabilis, or Four O'Clock. Is one of the most brilliant and showy of annuals. Planted in beds or masses they present a gorgeous sight during the afternoon. Mixed. All colors. oz. 15 cts., pkt. 3 cts.

MARIGOLD AFRICAN—The African varieties are stronger in habit and produce larger flowers than the French. Double mixed. All varieties. pkt. 3 cts.

MARIGOLD, ELDERADO, OR DAHLIA-FLOWERED—The flowers are globular, as perfectly double as a show Dahlia, and of enormous size, measuring three and a half to four inches across. Shades of the lightest primrose, lemon, rich golden yellow and deep, glowing orange. pkt. 3 cts.

MARIGOLD FRENCH COMPACT GOLD STRIPED—Plant is thickly studded with handsome flowers, generally striped regularly with brown on yellow ground. pkt. 3 cts.



NASTURTIUM TROPÆOLUM

NASTURTIUM, KING OF THE TOM THUMBS—Bluish green foliage. Showy, intense scarlet flowers. pkt 3 cts.

NASTURTIUM, KING THEODORE—Bluish-green foliage and almost black flowers. pkt 3 cts.

NASTURTIUM, LADY BIRD—Rich, golden yellow. Each petal barred with bright ruby crimson. pkt 3 cts.

NASTURTIUM, EMPRESS OF INDIA—Brilliant crimson scarlet flowers. Very rich. pkt 3 cts.

NASTURTIUM, CHAMELEON, New—A most gorgeously spotted and variegated flower, hardly any two on same plant alike. The finest of the class. pkt 10 cts., 3 for 25 cts.

TROPÆOLUM (LOBBIANUM) GOLD GARNET—Superb flowers of shining yellow, richly marbled with garnet; very distinct. pkt. 5 cts.

TROPÆOLUM (LOBBIANUM) LUCIFER—The richest velvety deep crimson imaginable. pkt. 5 cts.

TROPÆOLUM (LOBBIANUM) SPITFIRE—New, entirely true from seed; the brightest and most glowing in tone of all. pkt. 5 cts.

TROPÆOLUM (LOBBIANUM) FINEST MIXED—From dark velvety to the brightest gay colors in mixture. pkt. 3 cts., oz. 25 cts.

TROPÆOLUM MAJUS—Mixed colors. pkt. 3 cts., oz. 15 cts., ¼ pd. 40 cts.

NIGELIA, Love in the Mist—The plant has finely cut foliage; curious looking flower and seed-pods; of easy culture. All varieties and colors. pkt. 3 cts.

NOLANA, MIXED—Very pretty trailing plants for rock-work, hanging baskets, floral borders etc. Flowers resemble the Dwarf Convolvulus. pkt. 3 cts.

PHLOX DRUMMONDII—Fine mixed. All colors of the original type of Phlox Drummondii. oz. 60 cts., pkt. 3 cts.

PHLOX—For other varieties see next page.



MARIGOLD ELDERADO



BALSAM APPLE



MYOSOTIS FORGET-ME-NOT



MIMULUS MONKEY FLOWER



PHLOX STARRED AND FRINGED



PHLOX LARGE FLOWERED

Passiflora, Passion Flower.

Handsome, rapid-growing perennial climber for greenhouse decoration or sunny positions in the open ground in Summer. I have several sorts mixed.

Price, per pkt, 10 cts.



PASSION FLOWER.



PRIMULA OBOCNICA



CHINESE PRIMROSE

PHLOX, ALBA—(Pure White.) My strain is magnificent, chaste white flowers of unusual size and perfect form. pkt. 5 cts.

PHLOX, LARGE BLOOD-RED—Darkest colored of all, being of the deepest blood-red color. pkt. 5 cts.

PHLOX DRUMMONDII, NEW DWARF—A lovely strain, the plants growing only six to eight inches high and covered with large trusses of bright flowers. Extra fine mixed, of many colors. pkt. 5 cts.

PHLOX ECLIPSE—Bright rosy purple, deepening to rich, deep violet. pkt. 5 cts.

PHLOX DRUMMONDII GRANDIFLORA—(Fordhook Strain.) This strain of mixed large flowering Phlox is most remarkable in variety and brilliancy of colors. My strain is notable for the perfection and size of the flowers—many of the single flowers are so large they will nearly cover a fifty-cent piece. pkt. 5 cts.

NEW LARGE YELLOW PHLOX—Rich straw-yellow, of warm and glowing tone, while the flowers are of extra large size and fine form. pkt. 5 cts.

PHLOX STARRED AND FRINGED—Nothing in the Phlox line created such a sensation as the Pimbriata, Cuspidata and Star of Queadimburg. These large sized and curiously fringed and toothed blooms took the floral world by storm. I offer the improved Hybridized strain of wondrous beauty. pkt. 5 cts.

PHLOX, HARDY—Magnificent hardy flowering plants, growing in strong bushes from two to four feet high, bearing immense heads of large waxy flowers of lovely shades of colors. pkt. 10 cts.



MEXICAN PRIMROSE

PRIMULA ALBA MAGNIFICA—Flowers borne in large trusses well above the foliage, are pure white, with large bright yellow eyes. pkt 15 cts.

PRIMULA COCCINEA—A very brilliant bright red. pkt 15 cts.

PRIMULA FINEST FRINGED—Large flowering. A grand mixture, embracing all the above and many other finest fringed, large flowering varieties. pkt 15 cts.

PRIMULA OBOCNICA—A lovely and profuse ever-blooming Primrose, bearing, beautiful single flowers, white shaded with a slight tinge of lilac. pkt 10 cts.

PRIMULA FORBESI (Baby Primrose).—This is the freest flowering Primula we know of. The seed comes up very readily, and the little plants throw up tiny flower stalks when only a few weeks old. These, however, should be pinched off, and the plants kept growing until October, when the flowers may be allowed to develop, and from then on until late in Spring they produce their sprays of beautiful rosy lilac flowers in seemingly never-ending profusion. pkt 15 cts.

OENOTHERA, MEXICAN PRIMROSE—A most desirable plant for Summer and Autumn blooming. The plants grow about ten inches high and are covered with large flowers of a beautiful pink, with a white center. Useful both for pots and out doors. pkt 10 cts.

OENOTHERA, EVENING PRIMROSE, Acaulis Alba—Saucer-shaped, silvery-white flowers of enormous-size; striking and fragrant. pkt 3 cts.

POPPY, THE MIKADO—Of pure white and brilliant crimson scarlet; large double flowers of quaint, artistic beauty, with petals deeply cut, fringed and twisted like a Japanese Chrysanthemum. pkt. 5 cts.

POPPY, SHIRAZ—New. Of marvelous beauty. Shades of delicate rose, pink, carmine and brilliant crimson colors. Many of the flowers are edged with white and the petals have a glossy silk-like texture. pkt. 5 cts.



BABY PRIMROSE



POPPIES



NEW EMPEROR SALPIGLOSSIS
The ease of culture is the first quality that commends the Salpiglossis to all amateur gardeners. It thrives in any good garden soil and in almost any situation, though like other flowers it responds readily to good treatment. This New Emperor strain is a very great improvement on the older type in its increased size of flowers, their improved shape and larger variety of colors, and more than all else in their singularly beautiful veinings of gold. See cut above. pkt. 10 cts., 3 for 25 cts.



TECOMA SMITHII



GERMAN STOCKS

POPPY, IMPROVED DOUBLE CARNATION MIXED—For dazzling richness and variety of colors the flowers are unequalled. pkt. 5 cts.

POPPY, SNOWDRIFT—A grand variety. Large, pure white flowers, perfectly round and double. pkt. 3 cts.

POPPY, TULIP—A new and distinct Poppy, of brilliant red color and very free-blooming. pkt. 5 cts.

POPPY, PEONY FLOWERED—Double. The flowers are equal to Peonies in size, brilliancy and variety of color. pkt. 5 cts.

POPPY, IMPROVED DOUBLE MIXED—For dazzling richness and great variety of colors they are unequalled. pkt. 5 cts.

POPPY, FAIRY BLUSH—Immense globular flowers, perfectly double, and measure from ten to thirteen inches in circumference; the petals are elegantly fringed and pure white, except at the tips, where they are distinctly colored with rosy cream. pkt. 5 cts.

GOLDEN GATE POPPIES—Every conceivable combination of colors; striped, blotched, edged and bordered, on both single, semi-double and double flowers, wondrously varied and beautiful. pkt. 5 cts.

The following two varieties are Hardy Perennials:

ORIENTALE—Immense flowers of brilliant scarlet, with a purple center. pkt. 5 cts.

NUDICAULE—Iceland Poppy. Dwarfier than the preceding. Flowers varying from white to the deepest and most orange yellow. Very free blooming and admirable for pots. Mixed colors. 5 cts.

PORTULACA, SINGLE—Brilliant and beautiful colors. They delight in sunny situations, where they rapidly carpet the ground. Finest mixed. pkt. 3 cts.

PORTULACA, DOUBLE FLOWERING MIXED—Unsurpassed for brilliancy and beauty. One-half of the plants will produce magnificent double flowers. pkt. 6c.

PEONY, DOUBLE MIXED—Grand, hardy plants, well known ornaments of our gardens, with large, double flowers of various shades. pkt. 10 cts.

PICOTEE—Pink, hardy fancy double; mixed superb flowers of various shades. pkt. 5 cts.

PENSTEMON, MIXED—All varieties. Flowers resemble Gloxinias in shape. Mottled in crimson, pink, blue and white pkt. 3 cts.

PYRETHRUM, HARDY FLOWERING VARIETIES—Valued for permanent beds bearing large, bright-colored flowers of rose, flesh, pink, white, crimson, etc., which remain in bloom a long time. pkt. 5 cts.

PLATYCODON, GRANDIFLORUM—It grows upright, producing very handsome, bright deep blue and white flow-



SCHIZANTHUS

ers of extra large size. It flowers freely the first year from seed, and is perfectly hardy; one of the finest border plants known. pkt. 5 cts.

RICINUS ZANZIBARENSIS, Giant Castor Bean—Leaves measure nearly four feet across. From seed sown in the open ground in May the plants are in full foliage early in July, and attain a height of twelve to fourteen feet. The enormous leaves beautifully lobed, measure from two and a half to nearly four feet across. Planted as a solitary plant on the lawn, it makes a perfect pyramid of foliage, thickly set from top to bottom with gigantic leaves. A dozen plants in a large bed makes a most picturesque sight, to be admired from a long distance. The difference between the varieties in the coloring of the grand bamboo-like stems and long, slender leaf stalks is most admirable. Mixed varieties. Price, per pkt. 10 cts., oz. 25 cts.

RICINUS—Castor Oil Bean. Noble plants for Summer subtropical decoration. Height, five to fifteen feet, with imposing foliage and flowers. Mixed varieties. pkt. 5 cts.

ROCKET SWEET—Mixed colors, fragrant purple and white flowers. pkt. 3 cts.

STOCK, GIANT PERFECTION—A splendid race, growing two and a half feet high, with large spikes of perfectly double flowers of great substance. Mixed. pkt. 8 cts.

STOCK, TEN WEEKS—Desirable pot plants, as well as in the open garden. They are greatly prized for cut flowers on account of their fragrance and diversity of color. To have a continuous succession of bloom; sow at intervals from the beginning of March to the end of May. Fine mixed. pkt. 5 cts.

NEW LARGE FLOWERNIG GLOBE PYRAMIDAL STOCK—A magnificent race, with immense spikes of perfectly double flowers, the individual blooms frequently measuring from 2 to 3 1/2 inches in diameter. In great variety of color. pkt. 8 cts.

STOCK NEW WHITE PERPETUAL—Princess Alice; or "Cut and Come Again." Of strong growth and fine branching habit, it grows to the height of one and a half feet, and if sown early will produce uninterruptedly a great abundance of bloom from June until November. The individual flowers are uncommonly large, of the purest possible white. The oftener they are cut the better they seem to like it. pkt. 10 cts.

STEVIA SERRATA—Produces a mass of tiny, star-shaped pure white flowers. Most excellent for bouquets. The plants grow about eighteen inches high, stems branching freely and almost completely covered with the corymbs of flowers very pretty in beds; unequalled for cutting. pkt. 5 cts.



SALVIA COCCINEA GRANDIFLORA ROSEA—Very beautiful flowers of an orange-rose color; height three feet. pkt. 8 cts.

SCHIZANTHUS, OR BUTTERFLY OR CHRISTMAS ORCHID FLOWER—Elegant and very free blooming annuals, of much interest and beauty, and when well grown rival in singularity of colors and markings of the orchids. Large flowers spotted with crimson, lilac, purple and yellow, and the petals are cut in picturesque manner. In pots in the conservatory or house few plants are more attractive; also elegant in a bouquet or vase and fine for bedding. Choice mixed. pkt. 5 cts.

SCABIOSA, TALL GERMAN—Mourning Bride. The perfectly double flowers are useful for cutting; gracefully borne upon long slender stems, well above the foliage. pkt. 3 cts.

SCABIOSA SNOW BALL—Elegant double white flowers, very chaste and charming for bouquets. pkt. 5 cts.

SCABIOSA, NEW DOUBLE BLACK—A superb variety, with elegant black purple flowers—so deep in color as to appear nearly black. pkt. 5 cts.

SCABIOSA, NEW LARGE FLOWERING DOUBLE, New—Round flowers, double. Color, white to pink, crimson to red; some almost black. Valuable for cutting. pkt. 5 cts.

SALVIA SPLENDENS—Large Flowering Scarlet Sage. This "flame-colored beauty" is the most gorgeous of all plants. For months the blaze of flaming scarlet is intensely brilliant, with great spikes of bloom completely concealing the foliage. pkt. 8 cts.

SMILAX—Grown principally for its elegant green foliage, so indispensable for floral work. Requires a sunny window and free from dust. It grows very quickly from the seed. pkt. 5 cts.

MAMMOTH FLOWERING VERBENA

SENSITIVE PLANT MIMOSA PUDICA—Very chaste and elegant in foliage, the leaves being delicately pinnated. It affords much amusement by its sensitive character—even when slightly touched the leaves instantly close and droop; easily grown. pkt. 3 cts.

SWEET WILLIAM, PERFECTION, SINGLE MIXED—A splendid strain: flowers of many bright colors, large size and varied markings, including the finest auricula-eyed varieties. pkt. 3 cts.

SWEET WILLIAM, DOUBLE MIXED—Fine double flowers. pkt. 3 cts.

TECOMA SMITHII—Not new, but a rare and beautiful little shrubby variety of the Woodbine or Trumpet Creeper family; it is as easily grown as a Chrysanthemum, requiring a similar treatment; grown as a pot plant it averages in height from 18 ins. to 2 ft. and flowers most profusely for 9 months in the year; the tubular flowers, about 2 inches long, are borne in massive clusters on the tips of each new growth, and are bright yellow inside, and of brilliant orange, flushed with scarlet on the outside. pkt. 15 cts., 2 for 25 cts.

THUNBERGIA, FINE MIXED—Elegant, slender growing climbers, rapidly covering wire trellises, hanging baskets, etc., in the house. pkt 5 cts.

TRITOMA—"Red Hot Poker Plant," or "Torch Flower." Splendid, hardy perennial plants, admirably adapted for single clumps on the lawn or among shrubbery, where its tall spikes of orange red flowers make an effective display from August until December. 4 to 5 feet high. pkt 5 cts.

TORENIA, FOURNIERII—Lovely velvety-blue flowers, with three large spots of the darkest blue and a bright yellow throat; covered with bloom until frost. pkt 5 cts.

TORENIA, WHITE WINGS—Dainty and distinct flowers, ivory white, delicately tinted rose at throat. pkt 5 cts.

VERBENA, FINE MIXED—The seed, although so cheap, is really good, and embraces all colors. pkt 3 cts.

NEW MAMMOTH VERBENA, FAMOUS MIXTURE—In this grand new strain has been developed a mammoth Verbena that produces uniformly magnificent large trusses, with flowers of unusual size and of a wide range of colors. The individual blossoms are frequently larger than a silver quarter—in fact, many are scarcely covered by a silver half-dollar. Take a silver quarter and try to cover any of the single flowers of the corymb illustrated herewith, and you will realize how magnificent in size are the single florets, as the illustration has been accurately reproduced from a photograph, natural size. The colors are varied, and embrace all desirable markings. It is so grand that I want all my friends to have it, and hence offer the seed at a very moderate price. Price per pkt 10 cts.; 3 pkts 25 cts.

VERBENA, HYBRIDA FINE MIXED—From a superb collection of named varieties. Very large in flower and corymbs, and of the richest and most brilliant colors; is one of the finest strains in cultivation. pkt 5 cts.

VERBENA, AURICULA-FLOWERED—Splendid flowers, of large size, bright colors, large white eye. pkt 5 cts.

VERBENA, SCARLET DEFAECOE. True, brightest scarlet, intensely rich. pkt 5 cts.

VERBENA, PURE WHITE—Sea Foam or Candidissima. A fine strain of large flowers. pkt 5 cts.

VERBENA, BLUE WITH WHITE EYE—Large blue flowers, each with large white eye; very showy. pkt 5 cts.

VERBENA, ITALIAN STRIPED—Very showy striped flowers, of many bright colors. pkt 5 cts.

VINCA—Madagascar Periwinkle. Splendid house and bedding plants, growing 18 inches high, with glossy green leaves and beautiful circular flowers. From seed grown early in the garden they will flower beautifully during the Summer and Autumn, and may be potted for the house before frost. Mixed colors. pkt 5 cts.

VIOLA OROATA, SWEET VIOLET—The Popular Sweet Violet flowers, being early in Spring, deliciously fragrant. They lie in the ground a long time before germinating. Several colors mixed. pkt 3 cts.



SALVIA SPLENDENS



SWEET VIOLET



STEVIA SERRATA



TORENIA



WALLFLOWER



ZINNIA

WALLFLOWER, FINE GERMAN MIXED—Spikes of deliciously fragrant double flowers, combining many shades of color; chocolate and orange purple predominating. Double mixed, pkt 5 cts; single mixed, 3 cts.

WISTARIA, CHINESE, MIXED COLORS—Of luxuriant growth, bearing in the Spring immense panicles of purple or white flowers produced very profusely. pkt 10 cts.

ZINNIA, GIANT MAMMOTH—Of unusually robust habit, very of growth and immense size, the perfectly formed, very double flowers are of various striking colors. Blooming during a long period. pkt 5 cts.

ZINNIA, DWARF SNOWBALL—Handsome, bushy plants, large, Dahlia-like flowers, perfectly double and of the purest snow white. pkt 5 cts.

ZINNIA, STRIPED ZEBRA—Double flowers, distinctly striped. pkt 5 cts.



EVERLASTINGS



TRITOMA RED HOT POKER

ZINNIA, DWARF FIREBALL—Exactly like the Snowball except that the very double flowers are of a dazzling fiery-scarlet. pkt 5 cts.

ZINNIA, POMPON—The florets are piled in a symmetrical cone. The colors range from pure white, through creams and buffs, to a clear chrome yellow, with a series of tints ranging from the softest pinks to the deepest crimson. pkt 5 cts.

ZINNIA, SUPERB DOUBLE, MIXED—Perfectly double flowers, large size, brilliant colors. pkt 5 cts.

ZINNIA, CURLED AND CRESTED—New, odd and superb. Petals twisted, curled and crested into fantastic contortions and graceful forms. Mixed varieties, pkt 5 cts.

EVERLASTINGS.

MIXED EVERLASTINGS—A single packet will give in abundance a great variety of the most attractive Everlasting Flowers. pkt. 5 cts.

ORNAMENTAL GRASSES, 3 cts. per pkt.

GYNERIUM ARGENTUM—Pampas Grass. Flowers the second season; requires protection.

MIXED ANNUAL VARIETIES OF ORNAMENTAL GRASSES. All should at least have a packet of this mixture. It contains seeds of all the annual varieties in fine mixture.

WILD-FLOWER GARDEN SEEDS.

WILD-FLOWER GARDEN MIXTURE—These mixed flower seeds embrace more than a hundred varieties of such easy-growing and pretty flowers as are suitable for forming a wild-flower garden. They are very useful for woodland walks, roadsides, railroad embankments, and for sowing along sides of fences, and on any untidy bare spots of ground which are so frequently unsightly, and which if properly cared for and kept free from weeds, can be made to produce a continual display of bloom during the entire Summer. Large size packet, 10 cts.

My Condensed List of Choice Vegetable Seeds.

I believe it to be quite comprehensive, sufficiently so at least for all ordinary purposes. My Seeds are all new and fresh, this year's crop, and I sincerely believe there are none superior sold.

VELVET LAWN GRASS MIXTURE.

Is a compound of grasses that ripen successively, thereby always presenting a cheerful appearance. Lawns sown with only one or two grasses turn brown under our hot sun and remain in that condition until the cool months of Autumn revive them. The mixture that I offer is one of the best on the market, and can be relied upon to produce the very best results. Sow four bushels to the acre. Weight per bushel, 14 pounds. Price per quart, postpaid, 25 cents; price per peck, by express or freight at purchaser's expense, \$1.00, bushel, \$3.00.

MUSHROOMS.

The ease with which a crop of Mushrooms can be grown in an ordinary house, cellar, wood-shed or barn, and the astonishing success of many who have taken up this new industry, both for profit and their own use.

ENGLISH MUSHROOM SPAWN—It comes in bricks of about 1 1/4 pounds each; these, before planting, are usually divided into a dozen parts, and the pieces inserted in the bed eight to ten inches apart each way.

Prices on Spawn are net and not subject to discount. Per single brick, 25 cents, or 5 lbs. for \$1.00, postpaid. By express or freight, at your expense, 10 lbs., \$1.25; 25 lbs., \$2.75; 50 lbs., \$5.00.

	Pkt Oz		Pkt Oz		Pkt Oz
ARTICHOKE.		MANGLE WURZEL		Extra Jersey Wakefield	3.25
Large Green Globe	5.25	SUGAR BEET.		Early Spring Flathead	10.30
ASPARAGUS.		Mammoth Long Red	3.8	All Seasons	3.15
Colossal	3.10	Golden Tankard	3.8	Burpee's All-Head Early	3.20
Palmetto	3.10	Lane's Imperial Sugar	3.8	Large Late Flat Dutch	3.15
BEETS.		Red Top Sugar	3.8	Marbehead Mammoth	3.20
Extra Early Turnip	3.8	Improved Wanzleben	3.8	Burpee's Surehead	5.20
Extra Early Egyptian	3.8	BRUSSELS SPROUTS.		Autumn King	5.25
Eclipse	3.8	Perfection	5.15	Short-stem Drumhead	3.20
Edmand Blood Turnip	3.8	CABBAGE.		Solid Emperor	10.25
Electric, new	10.15	New Extra Early Express	3.15	CAULIFLOWER.	
Early Arlington, new	5.10	Earliest Etampes	3.12	Extra Early Paris	5.60
Long Smooth Blood Red	3.8	Early Cannon Ball	3.12	Early Erfurt	5.20
True Dark Stinson	5.10	Early Winningstadt	3.12	Improved Snowball	10.25
		Early Summer	3.15	CUCUMBER.	
				Cool and Crisp	3.10

IN THE FOLLOWING PAGES I OFFER SOME

Grand Bargains in Plants,

... SUCH AS ...

GERANIUMS, CHRYSANTHEMUMS, CARNATIONS, BEGONIAS, FUCHSIAS, ETC.

These are sold without PREMIUMS or DISCOUNTS of ANY KIND, as it will save much confusion and misunderstanding.

PLEASE REMEMBER THAT MY SEED DISCOUNTS OR PREMIUMS DO NOT APPLY TO PLANTS IN ANY CASE.

PLEASE NOTICE:—That I can not accept any orders for plants for less than 25 cents, unless 10 cents be added to pay postage and packing. The cost of mailing one or two plants is nearly as great as for a half dozen. However, I will accept any amount for Seeds, no matter how small.



MY GEM COLLECTION

OF 8 MAGNIFICENT HARDY EVERBLOOMING
TEA ROSES FOR ONLY 25 CENTS.

For 25 cents I will send, postpaid by mail, this charming "Gem" Collection of 8 Everblooming Tea Roses. Price for one year old plants 8 cents each, or 2 for 15 cents. Price for large, two year old size, 20 cents each, or the entire "Gem" Collection of 8 Roses for \$1.00.



CORNELIA COOK—Buds of immense size, borne up high on massive stems, and with their round full heavy form, carrying an air of grace and dignity quite unusual. The flowers are of the clearest, snowiest white and very beautiful.

GENERAL DE TARTAS—A first-class Rose for bedding. Brilliant carmine, deeply shaded with violet purple, extra large; very double, full and fragrant; very easy to manage; excellent for cutting for bouquets.

MADAME CAROLINE KUSTER—Bright lemon yellow; very large and handsomely shaped; one of the finest Roses; very free flowering. When its wood has once been hardened, it bears buds as large and handsome as Marechal Niel.

MADAME AGATHA NABONNAND—An exceedingly sweet and daintily beautiful Rose, resembling in its exquisite color the delicate tinting seen inside the fairest deep-sea shells—rosy flesh, bathed in golden amber. It has immense egg-shaped buds, broad, shell-like petals, and large, full flowers of beautiful form; free-flowering, and a great favorite for wearing.

MADAME BRAVY—One of the most beautiful Roses in my collection. The flowers are large and round; the outside of buds is creamy and soft, with a most charming blush tinge to the center, and the arrangement of the inner petals is seldom equaled for beauty. Delicious tea scent.

LOUIS RICHARD—A superb Rose imported from France. Extra large; splendid, full form; very double; delicious tea scent; color, rich coppery rose, changing to buff, shaded with carmine; center sometimes brilliant rosy crimson.

JULES FINGER—A magnificent Rose, elegant and valuable; extra large and fine double flowers, which are full and sweet. The color is bright, rosy scarlet, beautifully shaded with intense crimson, of vigorous growth and a free bloomer.

SOUVENIR D'UN AMIE—The color is a deep, rosy flesh, beautifully shaded with rich carmine; edges and reverse of petals silver rose; clear and bright. A Rose that will please the most exacting.

My "Christmas" Collection of 8 Very Valuable Everblooming Roses for 50 Cts.

PRICE, 10 CENTS EACH; 3 FOR 25 CTS. ALL NEW KINDS.

I have made a selection of the very best Roses for Winter Blooming, embracing a wide range of color. I can recommend this Collection to all who desire to grow Roses in the house during Winter. In ordering, please say the "Christmas" Collection.

BRIDESMAID, New—The most elegant pink Rose. Very large. Buds extra fine. One of the sweetest and very best for cutting for bouquets.

BEAUTE INCONSTANT—A wonderful new Rose, various colors, from crimson to light pink, with shades of tawny red, orange, chrome and deep rose.

CLOTTIDE SOUPERT—The best of all pot Roses, literally loaded with bloom at every stage of growth. Color, beautiful pinkish amber, flushed with silvery rose, with shades of salmon.

CHAMPION OF THE WORLD—It is the champion bloomer. It commences to bloom as soon as started to grow, and continues to bloom in the greatest profusion, both Winter and Summer. A rich, deep rosy-pink or flesh color.

REMEMBER—I will send this entire Collection of 8 "Christmas" Blooming Roses for only 50 Cents, costing separately over \$1.00 if purchased elsewhere. Three "Christmas" Collections for \$1.25, by mail, postpaid.

Price, large two year old size, 25 cts. each, or the entire set of "Christmas" Roses for \$1.25.

CHRISTINE DE NOUE, New—This is a great Winter-blooming Rose, with buds and flowers of the largest size. Color, richest crimson. The best Rose of its color.

GENERAL ROBERT E. LEE—This Rose which was introduced the past Spring, will produce more beautiful Roses in the Winter than any Rose grown. A small bush will produce hundreds of blooms. Color, orange yellow, very rich and beautiful. Extra fine.

KAISERIN AUGUSTA VICTORIA—A new pure white Rose. It is very large and double. A royal Rose in every respect. A rose I can recommend.

STAR OF GOLD—This is the best all-round deep, golden yellow Tea Rose that is grown. The buds are very large and shapely, while the flower is double to the center, and it is a deeper golden yellow than Marechal Niel. Don't fail to try it.

SPECIAL PREMIUM

To every person ordering both the "GEM" and "CHRISTMAS" Collections, I will give, free, the New California Rose, SANTA ROSA. Its flowers are a rich, shell pink, flushed with crimson. Price, 20 cents each, when ordered alone.

A Page of the GRANDEST CLIMBING ROSES

KNOWN TO THE FLORAL WORLD.

Price, 5 Cents Each Except Where Noted. Large, two-year-old Plants, 25 Cents Each, Except Where Noted.

THE RAMBLER ROSES Five Beautiful Varieties.

The New Hardy Climbing Rose, **GOLDEN YELLOW RAMBLER**, Withstanding Zero Weather With Impunity.

THE flowers are borne in immense clusters, after the same manner as the **Crimson Rambler**, and have the same handsome pyramidal form. Is a clear, decided yellow. Flowers from 120 to 150 flowers in clusters, very sweetly scented. Flowers last 3 to 4 weeks without fading, and a large bush in full bloom is one of the most beautiful and magnificent sights imaginable. The growth is very vigorous. Price, 20 cts each; large, two-year-old plants, 50 cts.

GOLDEN RAMBLER, **Allister Stella Gray**—It is a vigorous grower and blooms profusely both early and late. The straw and orange yellow flowers, of small size, are borne in large, handsome clusters—a big bouquet in each cluster. Price, 20 cts each; large, two-year-old plants, 40 cts each.

THE PINK RAMBLER, **Euphrosyne**—Identical with **Crimson Rambler** in growth, hardiness and richness of bloom. The color of flower is pure shiny rose; the half open bud brilliant light carmine. Price, 15 cts each; large, two-year-old plants, 50 cts each.

THE WHITE RAMBLER, **Thalia**—The habit of growth, manner of blooming and form of flowers are identical with the **Crimson Rambler**. The flowers are superb, pure white in color, and are produced in splendid large clusters of the same pyramidal form. Price, 15 cts each; large, two-year-old plants, 50 cts each.

"CRIMSON RAMBLER"—It is of rapid growth; the flowers are produced in trusses, pyramidal in shape, good specimens measuring nine inches from base to tip and seven inches across, fairly covering the plant from the ground to the top, so that it is a mass of glowing crimson. The color is superb, and remains strong and vivid to the end; plants in our grounds retained the bloom for two months. The profusion of bloom is marvelous. A correspondent states that on one shoot he counted over three hundred blooms. It is essentially a garden Rose, but makes a magnificent specimen in pot or tub. Price, 15 cts each; large size, 35 cts each.

SPECIAL OFFER—For 50 cts I will send the entire set of ten "RAMBLER ROSE" family, postpaid.

CLOTH OF GOLD, or **Chromatella**—Clear golden yellow; large, very full and double; highly fragrant.

CAROLINE GOODRICH, or **Running General Jacqueminot**. Finely formed, very double flowers; fragrance is most delicious. This is a **Hardy Climbing Tea**, and should not be classed with the **Hardy Climbers** that bloom but once a year, as the color is the same as that of **Gen. Jacqueminot**. Price, 15 cts each; large, two-year-old plants, 30 cts.

THE MARY WASHINGTON CLIMBING PILLAR ROSE—This Rose, so widely advertised, is claimed by the introducer to have originated in the garden of George Washington at Mt. Vernon over 100 years ago. It is an ever-blooming Climbing Rose of vigorous rapid growth, and makes a profusion of fine buds, which are borne in clusters. The flowers are of medium size, perfectly double, very sweet, and borne in endless numbers all Summer. Price, 15 cents; large, two-year-old plants, 35 cents each.

WHITE BANKSIA—A pure white variety; extra large clusters of flowers, with violet fragrance. 10 cents each.

YELLOW BANKSIA—A rich, golden yellow variety; extra large clusters of flowers, with violet fragrance. 10 cents.

MARECHAL NEIL—One of the most magnificent Roses ever grown; superb buds and flowers, extra large, very double and deliciously perfumed; color, deep golden yellow; highly esteemed for general planting and greenhouse culture, and in the South a splendid climber. Price, first size, 10 cents; large plants, 25 cents; extra large plants, 50 cents.

REINE MARIE HENRIETTA, or **Red Flowering Glorie de Dijon**—Flowers large, full and of fine form. Color, a pure cherry red; sweet-scented. Price, 10 cents.

LAMARQUE—Large clusters, pure white and double.

GOLDEN CHAIN, or **Climbing Safrano (Reve d'Or)**—Orange yellow or deep saffron; full and sweet.

GOLD OF OPHIR (Ophire)—Nasturtium yellow, suffused with coppery red. One of the most beautiful Roses.

JAMES SPRUNT—Deep velvet crimson; very double.

REINE OLGA DE WURTEMBERG—A beautiful sort for covering verandas and trellises. Color, rose crimson, suffused with yellow. Price, 10 cents each.

SOLFATERRE—A grand Climbing Rose. Color, a fine, clear sulphur yellow; very large, full and double; deliciously fragrant.

JAPANESE CREEPING ROSE, HARDY DEERBERRY ROSE Rosa Wichuriana—Handsome for rockeries, mounds or embankments, especially valuable for cemetery planting. It readily adapts itself to any conditions. Pure white single flowers and evergreen foliage. Its natural habit is to creep like an Ivy, but may be trained to climb. 10c. each, 3 for 25c., 15 for \$1.00; large size 25c, 6 for \$1.00.



CLIMBING METEOR—The New Rose now introduced for the first time, might more properly be called a Perpetual Blooming Climbing General Jacqueminot. Though a sport from the finest of all Hybrid Tea—Meteor—it is much larger, and of a deeper rich color, equalled only by the peerless Jacqueminot, and will produce twenty blossoms to Jacqueminot's one. It is a Rose which will make ten to fifteen feet of growth in a season, and show a profusion of bloom every day. Foliage, strong, healthy and luxuriant. Buds exquisite; flowers, large, beautifully shaped, and of that rich, dark velvety crimson color seen only in the Jacqueminot. Much deeper and richer than Meteor. I do not hesitate to pronounce it the finest Rose in existence for Summer blooming, as it will make a large growth and is loaded with its glorious blossoms all the time. For Winter blooming it has few equals in beauty and probably none in profusion. Just the Rose to train up in a conservatory or bay window, where its exquisite blossoms will show to wonderful advantage. Price, 10 cts each, 3 for 25 cts; large, two-year-old plants, 50 cts each.

EMPERESS OF CHINA, the New Perpetual Blooming Climbing Rose—It commences to flower early in Summer and from that time until late in the Fall blooms continuously. It is entirely hardy, having withstood a temperature of 16 degrees below zero unprotected without injury. In habit of growth it is vigorous, and in this respect is unsurpassed; small plants will make a growth of 6 to 8 feet in a single season. The flowers are of medium size, very graceful in form and highly fragrant. The bud is pointed and very shapely and is borne on long, stiff stems. Color, a soft dark red and, as the flower expands changes to an apple blossom pink. Think of Roses from May to December! It is surely the Rose for amateurs, as it needs but slight attention and no protection. Price, 15 cents; large two-year-old plants, 50 cents.

GLORIE DE DIJON—Our Southern friends are unbounded in their admiration of this fine Rose, which is seen there in its fullest perfection, being hardy in their section, where it is used as a pillar Rose. It is noted for the great size of its flowers, delicate Tea scent, and its exquisite shades of color, being a blending of amber, carmine and cream. One of the finest Roses on our list. Price, 15 cents each; large, two-year-old plants, 30 cents each.

WALTHAM QUEEN—A splendid new, climbing Rose Hardy in the North. It is a strong grower and continuous bloomer. Flowers, large, full and sweet. Color, a rich scarlet crimson, beautiful, a profuse bloomer. Nothing can compare with it for beauty of bud and foliage and profusion of its rich, red flowers of magnificent size. Price, 15 cents; large size, 35 cents.

15 CHOICE NAMED ROSES FOR ONLY 50 Cts.

—BY MAIL, POSTPAID.—

THE "HOBSON" ROSE COLLECTION.

My Roses are grown on their own roots and will grow and bloom at once, either planted in the open ground or in pots. They are of hardy constitution and true ever-blooming varieties or fragrant monthlies.

EXAMINE THE LIST BELOW and see if you can duplicate them anywhere else for double the money I ask for them. Every variety is first-class and many of them new and all produce beautiful flowers.

I cannot make any change in this collection, even if you should have several of the same varieties offered, you can easily sell them to your friends for more than double the price you have paid for them.

ARCHDUKE CHARLES—Rich, bright red; large, full and double, early and constant bloomer; very hardy and good.

AUGUST HALEM—A constant and profuse bloomer, first introduced last year. It is very fragrant; the handsome buds and flowers are of a clear rosy red, verging to deep, rich crimson. Sure to become immensely popular.

BRIDESMAID—A lovely new Tea Rose, worthy of its name. Sport from the well known Catherine Mermet. Pointed buds, long stems, lovely pink.

BON SILENE—Noted for the great size and beauty of its buds; bright, rich, rosy crimson; good for both open ground and house culture.

DIRECTEUR RENE GERARD—Remarkable for the size, fullness, brilliant color combinations of its blossoms. Color, light yellow, bordered with china Rose, deepened at base of petals; large, full bloom of beautiful and very rich colored pink. Very fragrant, tree blooming, robust in growth.

MADAM CAMILLE—Flowers and buds of grand size; rosy flesh, shaded with salmon and carmine.



DIRECTEUR RENE GERARD

MADAME CAROLINE CUSTER—One of the hardest. Large, double flowers of beautiful lemon yellow.

MADAM LOMBARD—Extra large, full flowers, of rosy salmon; varies richly in color.

MADAME WELCHE—Large globular buds of amber yellow, clouded orange and ruddy crimson.

MADAME SCIPION OCHET—Pale rose, shaded with clear yellow; large, full flowers; very handsome.

MRS. WHITNEY—A beautiful new Rose. Clear, deep, pink buds of ideal form, with long stems.

MADAME MARGOTTIN—Rich citron red, shaded apricot; large, full flowers; profuse bloomer. Very fine.

MADAME JOSEPH SCHWARTZ—White, shaded with flesh pink, full flowers of medium size.

PRINCE KAMIL PACHE—A Rose that thrives everywhere, and always gives satisfaction; apricot, changing to salmon yellow; large, full, fragrant.

SNOWFLAKE—Neat and dwarf in habit, and really wonderful in constant profusion of bloom; exquisite pure white flowers of medium size.

THE HOBSON ROSE COLLECTION of 15 choice named Roses in large-two-year-old plants for \$2.00 by mail postpaid, or by express for \$1.75, purchaser paying charges.

The Famous La France Family of Ever-Blooming Roses

Red, White, Striped, Pink, Crimson, Yellow and Climbing, 7 Varieties for 60 Cts.

THE La France Roses are certainly nearest perfection of flowers and nothing can compare with them in the eyes of the true Rose lover. A distinctive characteristic of the set is the true La France fragrance by which every one may be known.

WHITE LA FRANCE—It is identical with La France except the color. It is pearly white, sometimes tinted fawn. Price, 10 cents each; large, two-year-old plants, 25 cents each.

PINK LA FRANCE—Undoubtedly the most perfect type of a cut flower Rose; elegant foliage; no variety surpasses it in delicate color—silvery rose, shaded pink; large, keeps well, and of distinct, pervading fragrance. Price, 10 cents each; large, two-year-old plants, 25 cents each.

STRIPED LA FRANCE—Imagine a lovely Rose with the shape and fragrance of La France, of a rich creamy pink, with a silvery gloss, growing deeper at base of petals, the whole beautifully etched and streaked with delicate carmine. Price, 10 cents each; large, two-year-old plants, 25 cents each.

RED LA FRANCE—Of a deep Rose pink hue. The flowers are produced in wonderful profusion upon long stems; are very large, double, and of superb form. Price, 10 cents each; two-year-old plants, 25 cents each.

LA FRANCE DE 1889 (New Crimson Hybrid Tea Rose)—One notable peculiarity of this variety is its long, elegant buds, while expanded flowers are of immense size. Color, very nearly scarlet. The brightest and most brilliant Rose we know. Price, 15 cents each; two-year-old plants, 30 cents each.

CLIMBING LA FRANCE—Identical with La France in every respect except in style of growth, which in this new variety is of strong climbing habit. Charming peach pink color, and exquisite. Price, 15 cents each; two-year-old plants, 30 cents each.



La France
COPYRIGHTED BY W.A.B. & CO.

YELLOW LA FRANCE (New)—Mme. Pernet Ducher—A charming Rose and a new shade in this section, being the first with a distinct yellow coloring. Outside petals are sulphur yellow, and assumes a deeper shade toward the center, with polished, glittering surface like a Water Lily. Price, 15 cts. each; large, two-year-old plants, 35 cts. each.

SPECIAL OFFER—For 60 cents I will send the set of 7 Hardy Ever-Blooming La France Roses, or 3 sets for \$1.50; or the set in large two-year-old plants for \$1.50; 2 sets in the two-year-old size for \$2.50. In ordering say the "La France Set."

SPECIAL PREMIUM.

To every person purchasing the HOBSON and LA FRANCE SETS TOGETHER, I will give, free, the SENSATIONAL NEW ROSE, MAID OF HONOR, a very deep, glossy pink, darker than Bridesmaid; the most exquisite thing you ever saw. Price, 20 cents each, when taken alone.

"Zero" Collection of 10 Hardy Garden Roses

FOR 60 CENTS.

They will live out during the Winter in our Northern States without protection. They are noted for their magnificent form, rich colors and freedom of bloom.

Price, 10 Cents Each, any 3 for 25 Cents.

This collection in large, two-year-old plants for \$1.25.
Single plants, two-year-old size, 25 cents.

ALBANE d'ARNEVILLE—A splendid new pure white Hybrid Perpetual: commences to bloom almost as soon as planted, and blooms all through the Summer until late in the Fall. The flowers are pure white, sometimes faintly tinged with pink; large, very double and full, and delicately perfumed.

COQUETTE DES BLANCHES—One of the finest white Hybrid Perpetuals. Flowers large, pure snow white; very double, full and fragrant. Constant and very profuse bloomer.

EMPRESS OF INDIA—One of the best garden Roses. An imperial Rose in every way. One of the darkest. The flowers are large, full and fragrant, and of the most intense dark, rich, velvety crimson imaginable. They are so dark, in fact, that at a little distance they look almost black. Very handsome and always greatly admired.

GUSTAVE PIGANEAU—Flowers very large, equaling Paul Neyron in size, double and of cup form. Color, a beautiful shade of bright red and brilliant carmine. Received four medals, and was illustrated in Journal des Roses.

GLORIE DE MARGOTTIN—Is decidedly the most brilliant hardy red Rose as yet introduced. So intense is the color that it might almost be termed a scarlet. Added to these qualities, it has flowers of the largest size and most exquisite fragrance.

JOHN HOPPER—Flowers are large, very regular and full. Color, a brilliant rose, changing to a bright glowing pink, shaded with rich scarlet. Very sweet.

LOUIS VAN HOUTTE—One of our best and most valuable hardy garden Roses with very large flowers of a brilliant vinous crimson, elegant full form, delightfully fragrant.



HARDY GARDEN ROSES

KING OF SWEDEN—This is by far the richest Rose yet introduced. It is so intense in color that the exclamation on seeing it is, "Oh, that lovely black Rose!" It is very velvety in texture. A most superb rose, and one that will always be found in the standard list of Roses.

MARSHAL P. WILDER—This fine new Rose originated in this country, and was named in honor of the venerated President of the Pomological Society. It is a Rose of unusual excellence. Flowers are large, semi-globular, full, and of good substance. Color, a bright, scarlet-crimson.

RODOCANACHI—Soft, transparent pink, shaded with carmine; immense flowers, very full and fragrant. One of the best roses in cultivation. Stems long, straight, and clothed with large, deep green leaves; buds bright and handsome.

THE SIX NEAREST BLACK HARDY ROSES.

The Set in One-Year-Old Plants, 50 Cents; the Set in Large Two-Year-Olds, \$1.25, postpaid.

ANTOINE QUIHON—Extra large flowers, very full, compact and regular form. Color, a rich violet crimson, elegantly tinged and shaded with maroon red; a free bloomer, and very sweet. Price, 15 cts each; large, two-year-old plants, 30 cts each.

BARON DE BONSTETTEN—Splendid, large flowers, very double and full. Color, a rich dark red, passing to a deep velvety maroon; highly scented and very beautiful. Price, 15 cts each; large, two-year-old plants, 30 cts each.

BLACK PRINCE—A superb Hybrid Perpetual Rose; very dark, blackish red, richly shaded, rich violet crimson; extra large, full flowers, delightful, perfumed; good, bushy habit; a hardy and vigorous grower, and free bloomer. One of the very best dark Roses. Price, 15 cts each; large, two-year-old plants, 50 cts each.

DUKE OF EDINBURG—Dark, velvety maroon, full regular form, very handsome and fragrant. A perfect beauty. Price, 15 cts each; large, two-year-old plants, 30c.

PRINCE CAMILLE de ROHAN—Very dark, rich, velvety crimson, passing to intense maroon, shaded black, large, full flowers, looking at a little distance as if really black. One of the darkest roses; very handsome. Price, 15 cts each; large, two-year-old plants, 30 cts each.

SOUVENIR de DUCHERE—A superb Rose. Extra large, compact flowers, very full, double and sweet. Color, a beautiful, brilliant scarlet, deepening to dark, glowing crimson; very rich and handsome. Price, 15 cts each; large, two-year-old plants, 30 cts.

MY "FAMOUS" SET OF HARDY EVER-BLOOMING ROSES.

For 50 cents I will send free by mail my "Famous" Set of Hardy Ever-Blooming Roses; for \$1.25 I will send 3 sets. This set in large two-year-old plants for \$1.00.

BALL OF SNOW—(Boule de Nieve)—In this variety we have a hardy, ever-blooming Rose of great value. It is a Rose of great size, perfectly pure, exquisitely fragrant, pure white in color and entirely hardy. Invaluable for cemetery planting, or where the white flowers are desired, as it blooms freely all Summer. Price, 10 cts each; extra large plants, 30 cts each.

CHAMPION OF THE WORLD—A very hardy, ever blooming Rose; advertised extensively. The introducer claims it is the champion in hardiness, fragrance, vigor form and color, and for Winter blooming. While we can not endorse all the good qualities claimed for it, we have found it a remarkably free-flowering hardy Rose, resembling very much Mrs. DeGraw. Color, a rich, deep, rosy pink, darker and richer than Hermosa. It is always in bloom; hardy. 15 cts each; two-year-olds, 35 cts.

DINSMORE—Very similar to Madame Charles Wood, but claimed by the originator to be much stronger in growth and more fragrant. It is a vigorous Rose of dwarf, branching habit, and is fairly loaded down with flowers all Summer long. The flowers are large, perfectly double, of a dazzling scarlet crimson color, with a rich, spicy fragrance. It is entirely hardy and blooms incessantly. Price, 15 cts each; two-year-old plants, 35c.

MRS. DEGRAW—One of the best Roses for general cultivation. It is entirely hardy and equals the tender sorts in profusion of bloom. From early Summer until frost it may be depended upon to produce flowers in abundance. In color it is a rich, glossy pink, delightfully fragrant, and is such a strong grower that it is almost impregnable against the attacks of insects, which usually destroy some of our finest Roses; thus it is certain to be unequalled for the garden. Price, 10 cts each; two-year-old plants, 35 cts each.

MADAME MASSON—An excellent Hybrid Perpetual, noted for its constant and profuse bloom. The flowers are large; color, a clear bright Rose, highly perfumed. One of the best for planting. This Rose is a very superb variety, and should be more generally known. Try it. Price, 15 cts; two-year-old plants, 35 cts each.

MADAME ALFRED de ROUGEMONT—A strong, vigorous grower; begins to bloom at once and continues until stopped by severe freezing. Pure snow-white flowers, finely tinged and clouded with pale, rosy blush. Large, full and double, and borne in large clusters. Fragrant and fine. Price, 10 cts each; two-year-old plants, 35 cts each.

SPECIAL PREMIUM.

To every person buying the "Zero," "Black," or "Famous" Collections, I will give, free, one plant of the Magnificent New Hardy White Rose, OLIO. On first opening it is a delicate satiny blush, turning to pure white. Price, 25 cents each, when ordered alone.

"Favorite" List of Ever-Blooming Tea Roses

Price, strong young plants, 6 cents each, any 10 kinds of your choice for 50 cents, or 25 for \$1.00; Large, two-year-old size, 15 cents, any 8 of your choice for \$1.00, or I will send 10 two-year-old plants of my selection only for \$1.00.

Abbe Roustan—Creamy white, shaded rosy blush.
 Adam—Bright, flesh salmon rose. Extra large and double.
 Agrippina—Rich velvety crimson. A grand bedder.
 Alba Rosa—Beautiful rose-colored center, shaded blush.
 Anna Oliver—Lovely blush, shaded with carmine.
 Appoline—Clear pink, dashed with rosy carmine.
 Archduke Charles—Brilliant crimson, shaded violet.
 Aurora—Beautiful creamy white, rose colored center.
 Beau Carmine—Can. nine red; rich, large, with pale rose.
 Bella—Pure snow white. Long, pointed buds. Tea-scented.
 Bon Silence—Deep salmon rose, tinted with carmine.
 Bougere—Bronze pink; tinged with lilac. Large and full.
 Canary—Light canary yellow. Beautiful buds and flowers.
 Charles Rovelli—A lovely shade of brilliant carmine.
 Clementine Nabonnand—Coppery Rose, tinged with crimson.
 Comtesse de Barbantine—Color, a flesh white and sweet.
 Comtesse Riza du Parc—Coppery rose, tinged soft velvet.
 Cramoisi Supérieur—A rich velvety suffused fine.
 Douglas—Dark, cherry red, rich and velvety. Large, full.
 Duchesse de Thuringe—Beautiful silver rose. Finely cupped.
 Eugene Beauharnais—Beautiful, deep red.
 Edith Gifford—Flesh white, shaded cream and pink.
 General de Tartas—Deep mottled rose, often tinged buff.
 Homer—Soft clear rose, with a salmon shade. Splendid.
 Jean Perne—Buds of light color, suffused with salmon.
 Jules Finger—Bright rosy scarlet and intense crimson.
 La Chamoise—Nasturtium yellow. Very beautiful buds.
 Lady Warrender—Pure white, sometimes shaded with rose.
 La Princess Vera—Pale flesh, changing to salmon.
 La Sylphide—Blush with fawn center. Very large, double.
 La Pactole—Elegant buds. Color, pale sulphur yellow.

Louise de la Rive—A flesh white, changing to a rose center
 Louis Philippe—Rich, dark velvety crimson. Free, beautiful.
 Louis Richard—A coppery rose, beautifully tinted lilac.
 Lucullus—A beautiful dark crimson. Full and fragrant.
 Marie Duchere—Rich, transparent salmon, fawn center.
 Mile. Rachel—A lovely Tea Rose. Pure snow white.
 Mme. Bosanquet—Flesh shaded deep Rose; large, sweet.
 Mme. Bravy—Creamy white. Large, full, very symmetrical.
 Mme. Camille—Delicate rosy flesh, changes to salmon rose.
 Mme. Dennis—Waxy white, center fawn and flesh. Large.
 Mme. Facon—Color, a deep, apricot yellow; very beautiful.
 Mme. Joseph Schwartz—White flush pink. Cupped.
 Mme. Lawrence—A beautiful pink, button Rose.
 Mme. Margottin—Citron yellow, with coppery center.
 Mme. Pauline Labonte—Salmon rose. Large, full, sweet.
 Mons. Furtado—A beautifully formed yellow, very full.
 Monthly Cabbage—A rosy red. Globular shape, fragrant.
 Pink Daily—Color, a pale pink flowers, produced in clusters.
 Purple China—Rich purplish crimson; velvety.
 Queen of Bourbons—Clear carmine, changing to rose.
 Roi de Cramoisi—Bright purplish crimson; very double.
 Rubens—White, shaded with rose, yellowish center.
 Safrano—Apricot yellow, changing to orange and fawn.
 Sanguinea—Rich, dark velvety, center fawn and flesh.
 Sombreuil—Beautiful white, tinged with delicate rose.
 Souv. d'un Ami—Fine, delicate rose, shaded with salmon.
 Susanna Blanchet—Pale flesh, silvery white, shaded amber.
 Triomphe de Luxembourg—Rosy carmine on buff ground.
 Viridiflora—The flowers of this variety are pure green.
 White Daily—Pure white. Beautiful, long, pointed buds.
 Yellow Tea—Large pale lemon-yellow. Beautiful; large buds.

"RAINBOW" LIST OF NEW AND EXTRA CHOICE EVER-BLOOMING TEA ROSES

PRICE, 8 CENTS EACH; ANY 4 FOR 30 CENTS, ANY 8 OF YOUR SELECTION FOR 50 CENTS.
 LARGE, TWO-YEAR-OLD ROSES, 25 CENTS EACH, 6 OF YOUR SELECTION, \$1.00.

American Perfection—Color, light pink, shaded deeper.
 Archduchess Immaculata—Color, intermingling of bronze, orange, yellow pink and crimson; extra fine and large.
 Antoine Verdier—Rich red, brightened with maroon.
 Aline Sisley—A glowing scarlet passing to crimson.
 Beauty of Stapleford—Color, clear, bright pink, shading to a bright, rosy crimson; grand, extra large buds.
 Beaute Instantant—Colors from crimson to light pink with shades of tawny red, chrome orange and deep rose.
 Bridesmaid—Grand new sport from Mermet. Color, a rich deep pink. Best and largest pink Tea Rose.
 Clotilde Soupert—Best of all pot Roses. Literally loaded with blooms of pure white, clear, bright pink, shading to a bright, rosy crimson; grand, extra large buds.
 Countess Eva Starhemberg—Long pointed buds of great beauty; color creamy yellow, shaded with rose.
 Coquette de Lyon—I have no yellow Rose to bloom as freely as this. Canary yellow, shaded with rose.
 Charles Legrady—Chamois red, richly shaded crimson.
 Comtesse de Figneuse—Buds long and pointed, like Niphetos. Color, deep intense golden yellow. Very fine.
 Corinne—A beautiful flesh color, shaded tawny copper.
 Devoniensis—Magnolia; creamy white with rosy center.
 Dr. Grill—Coppery yellow, with tawny rose reflex.
 Duchess of Edinburg—Large buds of dark crimson.
 Duchess de Brabant—Color soft, light rose with heavy shadings of amber and salmon, very beautiful.
 Etou de Lyon—Color, a fine, rich, deep yellow.
 Empress Augusta Victoria—Pure white; pale lemon center.
 Ernest Metz—Finely formed and tinted, soft satiny carmine pink bordered bright rose, flamed crimson.
 Edouard Littaye—Lovely shade of pink and carmine.
 Gen. R. E. Lee—Apricot yellow, salmon and orange tints.
 Henri—Color, amber rose tinged, apricot yellow.
 Isabella Sprunt—Beautiful, fine, rich, deep yellow.
 J.B. Varrone—Intense crimson, shaded rich salmon yellow.
 Joseph Metral—Large flowers of deep carnation red.
 Lady Zoe Brougham—Bright tawny yellow.
 La Neige—Thoroughly double; pure white; extra fine.
 Luciole—Color, bright carmine rose, shaded yellow.
 Letty—Clear soft rosy pink color, shaded with intense crimson on the edge of the petals, the largest size.
 Md. Schwaller—A rich deep pink, blooming in clusters of five and sometimes 20 Roses. Excellent for garden.
 M'lie Francesca Kruger—One of my best Roses. With its shadings of deep coppery yellow, distinct and unique.
 Media—A grand yellow Rose of the largest size.
 Meteo—Rich, velvety crimson, very bright and striking.
 Malmaison Pink—Color, a beautiful rich, creamy flesh, shaded clear peachy pink, with rose center.
 Malmaison White—The color is a pure, waxy snow white; the center of the flower has a delicate lemon tint.
 Malmaison Striped—Color, creamy white, with rose center reverse of petals striped carmine.
 Mosella—Color, The Yellow Souperet. A fine companion.
 Mrs. Jas. Wilson—Pale yellow, tinted with rosy pink.
 Madame Honore Defresne—Citron yellow, copper shading,

Madame Scipion Cochet—Color, a soft primrose yellow with rose shadings, unique in size and shape of buds.
 Marie Van Houtte—Elegant white, shaded lemon yellow.
 Madame Eli Lambert—A rich creamy white, faintly tinted pale yellow, bordered soft rose.
 Madame Hoste—Long pointed buds, and of a lovely creamy white shade; a beautiful and charming shade.
 Madame Marthe Du Bourg—The color is a creamy white, touched with carmine or pale heliotrope edges.
 Md. de Vatrey—The color is a bright rich crimson scarlet.
 Md. Lombard—Very sweet; beautiful shade of rosy bronze.
 M'lie. Perreau—Beautiful rosy flesh, passing to pink.
 M'lie. Welter—Color, a soft rose, with pale yellow.
 Md. Caroline Kuster—Lemon yellow, changing to white.
 Madame Etienne—One of the very finest clear pink.
 Madame de Watteville—Color, beautiful shell pink, deepening to a bright rose at the edge of the petals, the body of the flower being creamy white. "Tulip Rose."
 Marion Dingee—Deep brilliant, dark crimson; fine.
 M'lie Cecil Barthod—Beautiful golden yellow buds.
 Marquis de Vivien—Bright carmine, light rose and yellow.
 Niphetos—A most elegant White Tea Rose; long buds.
 Princess Sagan—Bright velvety crimson, of great beauty.
 Princess Beatrice—Color, a coppery or ruddy yellow, distinctly margined with bright crimson.
 Princess of Wales—Beautiful amber or coppery yellow.
 Pale de Welter—A grand, rich, golden yellow buds.
 Papa Gontier—Immense buds; color, rich cherry red, passing to clear glowing crimson. One of the best.
 Pearl Rivers—The ground color is ivory white, with petals delicately shaded and bordered with pale rose.
 Prince Kamil Pacha—Flowers very large and of great substance; color, apricot, changing to a salmon yellow.
 Rubi de Welter—Color, a rich, deep, golden yellow, crimson center, with veins of rosy red and pink.
 Rainbow—The color is a lovely pink, blotched and streaked with the darkest crimson.
 Rheingold—Long, pointed buds; the color is a Naples yellow, shaded with orange; a beautiful flower.
 Snowflake—A lovely pure white Tea Rose.
 Souv. de Welter—A grand, rich, golden yellow buds.
 Souv. de Laurents Guillot—Very large and double, color, a deep pink shading to a center of yellowish peach.
 Sunset—Color, an exquisite orange and coppery yellow.
 Triumph de Pernet Pere—A fine, clear red, sometimes passing to a bright crimson; very large and beautiful.
 The Queen—A pure white Rose, of large size.
 The Queen—A beautiful bud, a rich, pale, snowy white.
 The Gem—Color is a fine faultless, straw yellow; outside petals washed and lined with rosy crimson.
 Viscomtesse de Wautier—Rosy yellow on the outside petals rosy white on the inside of petals.
 Valle de Chamounix—Coppery yellow, shaded rosy blush.
 Snowflake—Folkstone—White, faintly tinted with fawn.
 White Perle des Jardins—A truly ivory white; superb.
 White Bon Silence—Valued highly for its splendid buds.

New Double Crimson-Flowering Bedding Geranium S. A. NUTT.



NEW DOUBLE CRIMSON FLOWERING GERANIUM S.A. NUTT

Positively the greatest Crimson Bedding Geranium. This the finest of dark crimson Geraniums, has now taken the lead as a bedding Geranium, being used in the largest parks and public grounds of the country, in preference to all others. Its dense compact growth, profuse blooming qualities and sun-proof constitution combined give it the prominence as a bedding plant as attained. As a pot plant it cannot be excelled; as it does not make long, straggling growth, as so many other Geraniums do in the winter. Price, 10 cents each; 3 for 25 cents, or will send 20 fine plants for \$1.00, postpaid.



Camille Bernardin, New Aureole, Single Geranium.

Very large trusses, individual florets large and well formed, plant of excellent free flowering habit; rosy peach veined with bright rose and streaked and marbled with pure white. This is one of the best varieties we have seen in this class. Price, 10 cts each; 3 for 25 cts; or I will send 18 fine plants, Camille Bernardin, for \$1.00 postpaid.

Beautiful New Single Aureole Geranium, Md. Bruant.

A magnificent variety for bedding. No other Geranium has ever attracted so much attention or been so much admired as this beautiful new aureole flowered variety. It is entirely distinct from any Geranium in cultivation, so much so that visitors on passing through the greenhouses, where hundreds of other varieties are in bloom, single it out at once as the most beautiful and attractive in the whole collection. It might with propriety be called the Pansy-Flowered Geranium, so distinct is it from the ordinary style. The plant is a vigorous grower, making nice compact plants, and very free flowering, producing fine, large trusses of bloom in great profusion; individual flowers of large fine shape; center of flower white, veined with carmine lake, the five petals regularly and distinctly bordered with bright sofferino. The arrangement of color is exquisite and entirely new in Geraniums. An excellent variety for pot culture, being a continuous bloomer Winter and Summer. Price, 10 cents each; 3 for 25 cents, or I will send 20 fine plants for \$1.00, postpaid.

Giant Bedding Geranium, Bruanti.

Color of the flower is a light vermilion-red of the most pleasing shade. The flowers are absolutely perfect in shape, contour and make-up, trusses exceptionally large, and borne in immense spherical balls, often measuring eight inches in diameter. It does finely in the open ground, and is perfectly reliable as a bedding Geranium of the highest merit. Price, 10 cts each; 3 for 25 cts; or I will send 20 fine plants for \$1.00, postpaid.

NEW DOUBLE GERANIUMS.

Price, 10 cents each, 3 for 25 cents. The set of 18 varieties \$1.00, postpaid.

- ALPINE BEAUTY—Double white. One of the finest.
- CENTAURE—Color, the richest deep pink, shading near base of petals to light pink and creamy white.
- DR. JACOBY—Enormous trusses of a clear salmon.
- ERNEST KELWAY—Vivid scarlet, with grand truss.
- FIRE BRAND—Color, a dazzling flame scarlet, fine, prominent truss; flowers large and of great substance.
- GENL. MILLOT—Intense and dazzling crimson scarlet.
- GLORIE DE FRANCE—Large, round flowers of waxy appearance; color, carmine and white, with carmine center.
- JOSEPHINE GERBEAU—Of immense size; color, cherry, shading to rosy lilac; the flower marked with white.
- LEONARD KELWAY—Glowing carmine, very bright.
- L. CONTABLE—A beautiful bright rose color; extra fine.
- La FAVORITE—This is without doubt, one of the best double white Geraniums ever offered.
- MARY HILL—The richest and purest deep pink flowers.
- MONTESQUIN—Exquisite pale mauve, with white eye.
- MRS. GLADSTONE—Grand color, pure white and shaded flesh pink towards the center; a beautiful combination.
- MARVEL—Rich crimson scarlet; large flowers and truss.
- PROFESSOR POIRAULT—Beautiful brilliant violet.
- SIR TREVOR LAWRENCE—Rosy pink; beautiful foliage.
- WILLIAM PFETZER—Beautiful bright apricot color.

NEW SINGLE GERANIUMS.

Price, 10 cents each, 3 for 25 cents. The set of 18 varieties for \$1.00, postpaid.

- ATHLETE, New—Its florets two inches across, of intense fiery scarlet, has a large, distinct, white eye.
- BENJAMIN SCHROEDER—Very large, single flowers, of soft, rosy pink, with distinct white blotch on upper petals.
- BRILLIANT—A grand scarlet; very fine circular florets.
- BILL NYE—Color, peach, shading to pale salmon.
- GETTYSBURG—Bright crimson maroon; beautiful.
- JAMES KELWAY—A most beautiful crimson scarlet.
- MARGUERITE DE LAYRES—A grand, single pure white.
- MRS. J. M. GARR—Dwarf, compact habit, in freedom of bloom superior to all whites, equal to the best scarlets.
- MADONNA—Very soft shade of pale pink.
- PIERRE MAEL, New—Color, violet lake or pure violet, upper petals peculiarly and delicately spotted and striped with white; extremely large.
- SAM SLOAN—Fine velvety crimson, immense trusses.
- SIGNOR CRISPI—Beautiful pink, with large, white eyes.
- SOUVENIR DE MIRANDE—Large, round florets; lower petals salmon rose, streaked with pure white; a most novel color; free flowering.
- ST. PETER—One of the largest; color bright, glowing salmon bordered with white and veined salmon.
- SCARLET CLOTH—Splendid rich shade of scarlet.
- THEO. LAVALLE—Large flowers, freely produced; salmon changing to orange at base of petals; white eye.
- WEDDING RING—Dazzling orange-scarlet florets, circular and giving it the appearance of a beautiful ring.
- WM. A. CHALFANT—Dazzling scarlet florets; cupped.

BEST STANDARD DOUBLE GERANIUMS.

Price, 8 cents each, 4 for 25 cents. The set of 12 Standard Double Varieties for 65 cents.

- Asa Gray—Flowers are a salmon pink, mixed with white.
- Emerson—Flesh-colored flowers shaded pink and salmon.
- Grand Chancellor—Flowers are very dark, soft red.
- Gilded Gold—Deep, golden orange, of medium size.
- Hoff Beach—A rich amaranth purple.
- James Y. Murkland—Bright peach rose, margined white.
- Mrs. Hayes—A beautiful light shade of pink or flesh color.
- Mrs. Chas. Pease—Rich deep pink, marked with white.
- Peach Blossom—White, shaded with a dark peach pink.
- Richard Brett—Fine orange scarlet and very double.
- Robert George—Deep crimson scarlet, and of great size.
- White Swan—Fine double white.

BEST STANDARD SINGLE GERANIUMS.

Price, 8 cents each, 4 for 25 cents. The set of 12 Standard Single Varieties for 65 cents.

- Apple Blossom—Pearly white, suffused with rose.
- Brightness—Bright, dazzling, scarlet, very fine.
- Dazzler—A fine, rich scarlet, with a large white eye.
- Evening Star—White, with large rose colored center.
- Favorite—A fresh and beautiful shade of light lilac.
- Jealousy—Orange scarlet; a decided yellow hue.
- Kate Patterson—Deep, rich orange, overlaid with buff.
- Mary Halleck Foote—A bright salmon rose; very large.
- Ralph—A profuse bloomer; dark amaranthine purple.
- White Perfection—Pure white, and profuse bloomer.
- W. C. Bryant—A soft, rich, pure scarlet; white eye.
- Wood Nymph—Bright, clear pink, with light markings.

My "Colossal" Set of 10 New Double Geraniums for 60c.

This collection of Ten new double Geraniums is certainly the finest lot and have the most beautiful flowers of any yet offered.

They are prize winners wherever exhibited and always attract attention.

All distinct and choice new varieties. Everyone is unsurpassed for pot plants or bedding purposes.

Price, 10 cts. Each;
3 for 25 cts.



COLOSSUS—Double floret, quite circular; semi-double; two and one-half inches in diameter; truss also fine. The color is very beautiful, a rich shade of rosy crimson. Very free in bloom. One of the very largest, and finest double reds.

CONTRASTE—Very large. Lower petals orange and carmine, upper petals clear orange, striking contrast of colors.

DR. MAREST—Flowers of remarkably vivid carmine-scarlet, very large, perfectly double, and well massed; growth dwarf, yet broad and massive. Always in bloom and always singled out as the best and brightest bedder.

DOUBLE GUINEA—A decided improvement on Re Umberto, which is good enough recommendation; it is a better grower, stands the sun better, and is of a very bright orange yellow color; florets and trusses large; fine form.

EULALIE—Double. Bright salmon, a beautiful, well-formed flower, and a distinct advance upon any previous introductions in the same class, both in bloom and habit.

MARQUIS de GALARD—Double. Trusses of immense size, semi-double, color, a rosy cerise, shading to orange. Stems very stiff and long. Color, very beautiful and quite new, catching the eye at a glance. A perpetual bloomer.

MONSIEUR PRESS—Enormous trusses of large well-formed flowers; rich, rosy salmon, shaded with carmine and white. A beautiful combination of coloring.

MADAME AIME CHEVRELIERE—The best double white in our trials I noticed all through the Summer this superb new variety produced more flowers than any other white variety, and trusses and florets were larger.

MME. CHAS. DEBOUCHE—Double. Extremely free flowering with enormous trusses, composed of large, round flowers. Color, bright rose, shading to light pink, A grand variety of the most pleasing color.

ROSEBUD—Entirely unique and a beautiful, dwarf, bushy, pot plant. The full, round trusses of brightest scarlet are composed of exquisite, double florets that remain half curled like rosebuds.

HANDSOME IVY-LEAVED GERANIUMS.

A splendid class of climbing or trailing Geraniums, unsurpassed for hanging baskets, vases, (especially those in cemeteries,) rock-work and training on trellises; perpetual in bloom. Price, 10 cts each; 3 for 25 cts.

CAMILLE FLAMMARION—A beautiful variety; flowers large, full, cup-shaped, and a deep rose color.

CENTENAIRE, New—Rich, brilliant soferino, immense-sized florets of the most perfect form. Price, 15 cts.

COMPESSE HORACE de CHOISEUL—Vigorous, zoned, double and imbricated; color, a bright golden salmon.

FLOURENS—Flowers large; salmon, shaded.

GIROLFE—Beautiful wine color, shaded amaranth.

GLORIE de LORRAINE—A bright, cherry rosette form.

GARDEN GLORY—Fine, bright scarlet; probably the best of its color: bold, pure flower, free bloomers.

GALILEE—Rich, deep pink; extra large flowers.

INCOMPARABLE—Florets immense and regular form; quite full; color, an extra shade of rosy carmine.

JOAN OF ARC—The flowers are perfectly double, white as snow, and literally cover the plant when in full bloom.

JOSEPH DE MIASTRE—Clear, beautiful satin amaranth.

LA ROSEIRE—A rosette, delicate pink shade.

P. CROZY—The flowers are brilliant scarlet, borne in the greatest profusion, the trusses measuring six inches.

RYECROFT SURPRISE—Distinct shade of salmon rose.

SOUV. de CHARLES TURNER—Color, light scarlet with a soft rose tint the two upper petals being veined with crimson.

PELARGONIUMS, LADY WASHINGTON, OR PANSY-FLOWERED GERANIUMS.

The flowers have deep blotches on the upper petals and bright spots on the lower ones. When in bloom they are very beautiful and ornamental. Although their time of blooming is short their beauty while in flower makes them very desirable. I have a number of the newest and most beautiful varieties of Pelargoniums. Price, 25 cts each; or, I will send 6 fine varieties of my selection, post-paid, for \$1.00.

GOLDEN BRONZE, SILVER LEAF AND TRICOLORED GERANIUMS.

ARBUTUS, New—Fine, large salmon-pink flowers; profuse bloomer; foliage like Crystal Palace Gem. Price, 10 cents each.

BRONZE BEDDER—Follage yellow, with a narrow zone of deep chocolate, simply grand. Price, 10 cents.

CRYSTAL PALACE GEM—Broad golden yellow margin, with a central disk of green; dwarf. Price, 8 cents each.

DOUBLE BRONZE GORRINE—Clear golden yellow foliage, with elegant bronce, double, fiery orange-colored flowers. Price, 15 cents each.

MARSHAL McMAHON—Ground color of leaves, golden yellow, marked with a deep chocolate. A splendid bedding variety. Price, 15 cents each.

HAPPY THOUGHT—Tri-colored, with very dark green foliage, having a light creamy, almost white center, with a dark band about the light shade of zone. Price, 10 cents.

MOUNTAIN OF SNOW, Silver-Leaved—One of the best; the center of the leaf is bright green, the outer margin broadly marked with silvery white; flowers bright scarlet. Price, 10 cents each.

MRS. POLLOCK, Golden Tricolor—The finest of all; holds its colors during the heat of the Summer. Distinct markings, having a broad golden belt overlaid with a bright carmine-red zone, blending beautifully with the gold and bronce. Price, 15 cents each.

SWEET-SCENTED GERANIUMS.

Price, 8 Cents Each, Except Where Noted.

APPLE-SCENTED—Apple fragrance. Price, 10 cents.

BALM-SCENTED—Delicious balm fragrance.

LEMON-SCENTED—Delightful lemon odor.

NUTMEG-SCENTED—Small leaves, nutmeg perfume.

OAK-LEAVED—Beautiful foliage resembling oak leaves; black center, with green border.

ROSE-SCENTED—Two kinds, broad leaf and cut leaf; this is the most popular of all scented Geraniums.

SKELETON-LEAVED—Leaves very finely cut; rosy fragrance.

FRAGRANT MONTHLY CARNATIONS

Easily grown and bloom freely, either as bedding plants in Summer or in greenhouse or window garden in Winter.

"AMERICAN" SET OF 12 NEW CARNATIONS. Price, 15 Cents Each, Except Where Noted

THE SET OF 12 NOVELTIES FOR \$1.00.

AMERICA—The largest and most perfect shaped scarlet Carnation produced thus far, producing immense quantities of flowers. Price, 20 cents each; 3 for 50 cents.

BON TON—Bright scarlet, large and deeply fringed, fragrant, borne on remarkably upright stiff stems.

DELLA FOX—Fine pink Carnation, intermediate between Daybreak and Edna Craig in color. Large flowers.

FLORA HILL—Grand new white, has made a sensation wherever shown; looks like cut satin.

GOLD NUGGET—It is undoubtedly the best yellow, very slightly marked with red. A strong grower and continuous bloomer.

GENERAL MACEO—The flowers are large, very full and deeply fringed, deep, brilliant scarlet maroon—fully as rich and striking as Meteor. Price, 20 cents each; 3 for 50 cents.

JUBILEE—Color, intense scarlet of the richest shade; one of the largest flowering among the reds; very free.

J. WHITOMB RILEY—Without doubt the finest and most striking of all. Color, white, striped and edged with pinkish scarlet; the flowers are enormous on strong erect stems. Price, 20 cents each; 3 for 50 cents.

MAUD ADAMS—Deep clear cerise of very pleasing shade under any light. A most attractive color and handsome flower.

MORELLO—An extraordinary good crimson; maroon shadings; very free and continuous bloomer.

MRS. McBURNEY—Enormous flower, of clear salmon; blooms Camellia shaped; petals wax-like.

WHITE CLOUD—A remarkable new white; blooms very early; on strong stiff stems and continuously; flowers large, of fine shape, and very fragrant.



AMERICAN FLAG,

"Banner" Striped Carnation.

"Princess" Collection of 12 Carnation Pinks.

Price, 10 Cents Each; 3 for 25 Cents.

ARMANDY—Color, a pure white, very lightly penciled with scarlet. Stem is stiff and slender.

EDNA CRAIG—Rich, peach blossom pink of the most lovely tint; flowers fringed, very large.

E. C. HILL—A beautiful scarlet; extra large and double.

EMILY PIERSON—A deep red, with scarlet shadings; free bloomer, rich, clove fragrance.

FAIR PRINCESS—The color is a pure snow white, delicately penciled with bright crimson. Elegantly fringed.

JACK FROST, New—The largest White Carnation in cultivation. The flowers are of the purest white; of great substance.

METEOR, New—Deep, brilliant crimson maroon; large-sized bloom on fine, strong stem.

PAINTED LADY, New—Color, brilliant cherry pink, often slashed lighter pink at edges. A strong, healthy grower.

SNOW STORM—Flowers are large and round, very double, and of a pure glistening snow white.

SUNRISE—Color, orange, striped with crimson, flowers are full, double-fringed, and of rich color and fragrance, unsurpassed by any variety.

THOMAS CARTLEDGE—A pure, deep pink; large size, noted for flowering.

VICTOR, New—Color, a bright salmon pink which lights up beautifully at night. Large, full flowers.

SPECIAL OFFER—For 75 cents I will send the "Princess" Collection, postpaid.

"Puritan" Set of 10 Splendid New Carnations.

Price, 10 Cents Each; 3 for 25 Cents,

ALBERTINA—Flower large, round and full; color, light flesh and pink, with strong clove fragrance.

AMERICAN FLAG—Regularly and distinctly striped vivid scarlet and pure white.

GOLD FINCH—Rich golden yellow, lightly penciled with clear carmine.

HELEN KELLAR—Large and beautiful, Color, clear white ground, delicately and very evenly marked with bright scarlet.

PURITAN—Flowers, large and white, with heavy fringed petals; delightful clove fragrance.

ROBIN HOOD—A grand light scarlet of large size, with long, stiff stems, very strong grower of compact habit.

ROSE QUEEN—Color, soft, pure rose, so much admired.

THE STUART—The color is a rich shade of scarlet, immense flowers.

UNCLE JOHN—Pure white; finely fringed and very fragrant, with flowers of the largest size.

WILLIAM SCOTT—Exquisite and lovely shade of pink, with superb fragrance.

SPECIAL OFFER—For only 60 cents I will mail you postpaid, the "Puritan" Set of Ten Splendid Carnations.

The "Daybreak" Set of 12 Carnations.

PRICE, 8 CENTS EACH.

BLANCHE—Large, pure white flowers, finely fringed and deliciously fragrant. Looks like a big snowflake.

CREOLE—Color, a very dark crimson, large flowers.

PAWN—Large flowers, flesh color, deep pink center.

DAYBREAK—Delicate shade of brightest rosy pink.

FRED DORNER—Immense double scarlet flowers.

PORTIA—Brilliant scarlet flowers, very fragrant.

GRACE WILDER—Beautiful rose pink. Flowers large.

KITTY CLOVER—A very brilliant new striped yellow.

LIZZIE MCGOWAN—Pure white, petals lightly fringed.

PAWN CARFIELD—A very fine bloomer, blood red.

SILVER SPRAY—Pure white, profuse bloomer.

TIDAL WAVE—A bright pink, shaded salmon.

SPECIAL OFFER—I will send the "Daybreak" Collection postpaid, for only 60 Cents.

Hardy Scotch or Sweet May Pinks.

"HER MAJESTY"—Flowers, a lovely clear white, very double, on long, stiff stems; clove-scented, rivaling the finest Carnations. Price, 10 cents.

Price of the following, 8 cents each:

ALBA FIMBRIATA—Pure white, beautifully fimbriated.

BRUNETTE—Color, dark and velvety, almost black.

ESTHER—Splendid white, bordered with maroon.

JULIETTE—Cherry red, variegated pink and white.

LAURA WILMER—Velvety maroon, bordered white.

SNOW—Large; pure white; exquisite clove fragrance.

SPECIAL OFFER—The entire set of Seven Hardy Pinks for 40 cents, postpaid.

Hardy Garden Marguerite Carnations.

Unequaled for garden or house culture; blooming continually. Every color known in Carnations is represented, but although all these colors are represented, my plants have been grown from mixed seed, so I can not supply any special color. 5 cents each **SPECIAL OFFER**—Fifteen plants for 60 cents, net.

16 Magnificent New Chrysanthemums for 75c

My "Golden Trophy" Collection of 16 Distinct Varieties.

They will capture all the prizes at your Fall Exhibitions, because they are the Very Best of all Novelties, and unsurpassed as Exhibition and Pot Varieties.

Price, 10 Cents Each, Three for 25 Cents ; Any Seven for 50 Cents.

BENJAMIN GOUROD—New Early Red. This is without doubt the earliest pure red to date; very large flowers.

CRYSTALLINA—Snowball type, pure white flowers, which resemble a ball of cut tissue paper. It is a grand keeper.

DAYDAWN—A grand early white, center creamy lemon upon opening, gradually becoming pure white.

MODESTO—Intense color, a real dandelion yellow, unsurpassed in size; of an incurved, slightly whorled form, with full, high center.

GOLDEN TROPHY—A grand early yellow variety of dwarf growth and beautiful foliage, quite up to the flower, which is very large, compact and crowned with petals incurving into a complete golden ball of the most beautiful color. A wonderful keeper.

KENTUCKY—Extra large, graceful flowers, petals long and narrow, stems strong and covered with handsome foliage. A pure, even, shrimp pink color.

LADY FAIRPLAY—The grandest of all light shades of pink, incurving. Of the largest size, elegant in finish, color or exquisite. Early midsummer.

MRS. S. T. MURDOCK—Purest and brightest self-pink large size, fine form; foliage and stem perfect. Grand.

WESTERN PRIDE—A magnificent flower of grand size and form. Color, a beautiful amber and old gold.

MRS. PERRIN—The flower is as fine as old satin. Color, rose pink within, glistening pink without. Recognized as the ideal variety in this color.

MRS. HENRY ROBINSON—Immense incurving, broad petals of the purest white, changes into a perfect ball of snow.

OAKLAND—Clear shade of even terra cotta, full and deep. Straight stem and good foliage, splendid.

PHILADELPHIA—Beautiful, immense incurved flower, opening yellow, but changing to white at their tips.

SIGNAL LIGHT—Pale yellow incurved. Reverse of lower petals tipped red bronze, finely built flowers, solid.

SILVER CLOUD—Flower of enormous size, exquisite form. Color, a beautiful cream, with citron shadings, turning to a most delicate salmon.

VIOLESCENT—Enormous proportions, slightly rounding, incurved center; color, white, with lower petals delicately tinged lavender, the most beautiful flower imaginable.

PRIZE WINNING CHRYSANTHEMUMS, Price, 5 cents, any 6 for 25 cents, any 14 for 50 cents, 30 for \$1.00.

Amoor—Amber bronze, lined a deeper color.

Achilles—Very large flower; white flushed with pink.

Amber Queen—Soft amber, deep shading; exquisite form.

Autumn Queen—Large, globular flower, light bronze.

Ada Spaulding—Shades from pink at base to white.

Beau Ideal—Bright rosy pink, without lavender shade.

Bride of Roses—Exquisite shade of rosy pink.

Camille d'Arville—Large white bloom in first opening.

Clarence—Large, intense bright red, golden reverse.

Clinton Halfan—Golden yellow, upright petals.

Cullingford—Reflexed flower, color bright crimson.

Challenge—A great golden globe; the best very late.

Chas. Davis—A fine light yellow, tinted rich apricot.

Christmas Eve—A late curved and twisted pure white.

C. B. Whitnall—A soft velvet maroon, lighter reflex.

Col. W. E. Smith—Massive rich, deep golden yellow bronze.

Dr. A. W. Wakeley—Rich chrome bronze, inside shaded red.

Domination—Creamy white, extra large; early.

E. M. Bigelow—A magnificent red of even shading.

Ede Press—Delicate salmon, changing to creamy white.

Emily Ladenberg—The deepest crimson, almost black.

Eugene Dailedouze—The brightest, clearest yellow.

Frank Thompson—Fine white with a touch of pink.

Florence Pullman—Pure white flower, large and deep.

Fairview—Deep rich, crimson lake, large, full, round flower.

Gettysburg—The rich deep crimson variety, fine.

Heron's Plume—Immense flowers of pure frosted snow.

Golden Gate—A tawney yellow, distinct and striking.

Georgienne Bramhall—A beautiful soft primrose.

Gloriosum—A light lemon yellow, immense flower.

Good Gracious—A delicate shade of peach pink.

George W. Childs—A rich deep velvety crimson fine.

Golden Wedding—A grand golden yellow.

G. F. Moseman—Deep crimson, old gold reverse.

H. E. Widener—Bright yellow, without shadings.

H. L. Sunderbruch—A grand, perfect yellow; great.

Higon—A true clear pink with a touch of purple.

Her Majesty—A pearl colored sport from Mrs. Hill.

Harry Balseley—A soft "Mermet Rose" pink.

Hicks Arnold—Deep old gold, occasional reddish veins.

H. W. Riemann—A grand sort, deep golden yellow.

Ivory—Grand globular, pure white.

Inver Ocean—Pearly white suffused with pink.

Ingomar—Yellow with bronze shadings; tubular petals.

J. E. Lager—A very early yellow of the Japanese style.

John Shrimpton—Large flowers; color brilliant scarlet.

Joey Hill—Deep cardinal red, faced with old gold.

Jos. H. White—A large white variety with upright petals.

Judge Holtt—Anemone flowers; color pale pink.

Kioto—Big deep yellow with peculiar waxy lustre.

Kate Brown—Early white, good for cutting.

Laredo—Incurved straplike petals, deep pink.

L. Canning—Pure white flower, very large and flat, good.

Lenawee—Incurved Japanese flower of the purest white.

Lillian Russell—Very large, early, clear silvery pink.

Major Bonaffon—A soft, clear yellow; a fine flower.

Mrs. E. G. Hill—A delicate lavender pink incurved.

Miss Louise Black—A beautiful, reddish orange color.

Mrs. J. H. White—Large, crimson variety.

Mrs. J. Peabody—An enormous flower of pure white.

Mrs. G. M. Pullman—Very large, deep golden yellow.

Mrs. E. D. Adams—One of the best whites.

Mrs. L. C. Madeira—Perfect compact globe, golden yellow.

Maud Dean—Immense pink, finely incurved.

Mrs. Carnegie—A fine deep and bright crimson.

Mrs. Jerome Jones—One of the grand waxy pure whites.

Ms. Bergman—A pure white with creamy center.

Minnie Wannamaker—A pure snow white incurved.

Marion Henderson—Color, a rich buttery yellow, early.

M. Richard Dean—Bright, clear pink of a beautiful shade.

Mad. Gastillier—Large, early white flowers; full and fluffy.

Madison—Very large; clear pink, shading to a flesh.

Marie Louise—Incurving white with interlacing petals.

Maud Bruce—A fine pink, shading mauve; petals reflexed.

Mayflower—A magnificent incurved white.

Miss Gladys Spaulding—One of the very best whites.

Mrs. A. C. Burpee—Deep yellow, streaked with bronze.

Mrs. Charles Lanier—A bright golden yellow extra large.

Mrs. Florence Langham—Beautiful soft rose color; fine.

Mrs. J. G. Whildin—A light yellow variety, splendid size.

Mrs. N. N. Gerard—Beautiful peach pink of large size.

Mrs. W. K. Vanderbilt—Very large flower; snow white.

Mutual Friend—Very deep flower, of the purest white.

Mrs. Wm. H. Rand—A remarkably rich yellow color.

Mrs. Potter Palmer—Rosy pink, with silvery reflex.

Milverde—Glowing flower, clear pink, shading to yellow.

Pink Ivory—Clear bright shell pink, fine round form.

Pond Lily—Two-colored; center yellow, outside white.

Pres. W. R. Smith—A pure self-pink, very heavy.

Prosperity—Primrose yellow, large, full, double flowers.

Robert Bottomly—Large and full, pure white, late.

Ros. B. Dimmense—Rose pink, petals thick and heavy.

Ruth Ellis—Color, lovely blue white, form magnificent.

San Joaquin—White guard petals; center light lemon.

Shawmut—Enormous yellow flower of very graceful form.

The White Queen—The grandest double white.

Violet Rose—Extra fine flower of silky texture.

Vivand Morel—A beautiful pink with deep clear tints.

W. B. Dismore—Incurved globe yellow, very fine.

Wm. Simpson—A pleasing shade of light pink, good.

Yellow Queen—Extra large, bright, clear color.

OSTRICH PLUME OR HAIRY CHRYSANTHEMUMS.

Price, 8 cents each; 3 for 20 cents. The set of 12 kinds for 50 cents.

Beaute Lyonnaise—Color, an odd shade of red.

Eiderdown—Color, pure snow white, broad, solid, incurving petals, overlapping; strong grower, stiff stems.

Gold Dust—Pure golden yellow; very full and large finely incurved petals, showing no center at all.

L'Enfant des Deux Mondes—Grand flower, very large, fine, pure white and very plummy. Makes a fine, bushy plant.

Louis Boehmer—Color is an exquisite shade of silvery pink, with deep rose on the inside of the petals.

Mrs. Wm. Trelease—Beautiful shade of pink and violet.

Monarch of Ostrich Plumes—Bright chrome yellow, shaded with amber; flowers very large, full and incurved.

Mrs. Hignbotham—Enormous, bright pink, broad spreading petals, very full and plummy at the incurving petals.

Perle Lyonnaise—Bright, clear golden yellow; plumed.

Sautels White—Pure white with creamy center; inner petals nicely incurved, covered with hair or plush.

White Louis Boehmer—Beautiful, pure white. A gem.

Mrs. Alpheus Hardy—Think of a plant resembling masses of snow white ostrich plumes! A royal flower.

BEGONIA REX, THE KING OF BEGONIAS

And of foliage plants, far out-showing all others. It seems to feed on the rich metals of the soil, and spreads their lustrous tints over its leaves. Give them a soil composed of rich loam, woods earth and sand. Require a warm, moist atmosphere and a shady situation; suitable for warden cases. Do not allow the sun to strike the leaves while wet, and do not overwater. I have the leading and distinct kinds. Price, 15 cents each, or 4 for 50 cents; 10 for \$1.00.

TUBEROUS ROOTED FLOWERING BEGONIAS.

For pot plants, are now classed among the handsomest Flowering Bulbs. Bloom continually throughout the Spring and Summer, and outrival in color the most brilliant and dazzling Geranium flowers, and from the time the first blossom appears until all growth is stopped by frost they are never out of bloom, and are borne in such profusion that the rich green foliage is almost hidden under the load of blossoms. For bedding plants outdoors, or for pot culture in



BEGONIA REX



BEGONIA TUBEROUS

the house, the Tuberos Rooted Begonia can not fail to give satisfaction, even to the most inexperienced, as they require no more attention than the Geranium. Fine bulbs in the following colors. Crimson, Scarlet, Rose, Yellow, Pink and White. To color. Price, 10 cents each; 6 bulbs for 50 cents or 15 bulbs for \$1.00, postpaid.

BEGONIAS—FLOWERING VARIETIES.

PRICE, 8 CENTS EACH EXCEPT WHERE NOTED.

ARGENTEA GUTTATA—Leaves oblong in shape, of a purplish bronze color, white markings; flowers white.

ALBA PERFECTA—In all respects identical with the well known Rubra, except that the flowers are white.

ALBA PICTA—Long, pointed, slender leaves, thickly spotted with silvery white. Foliage small and elegant.

BERTHA CHATEAU—Bright green leaves and flower of a beautiful currant red; very floriferous and a charming variety.

DEWDROP—It will grow and thrive anywhere, and requires no more care than a Geranium. Color, pure white.

FUCHIOSA OCCIDENCE—Flowers a bright scarlet color.

GLORIDA—A handsome basket plant. Foliage small and delicate, contrasts well with its white bloom.

HYBRIDA MULTIFLORA—Very free, beautiful pink flowers.

McBETHI—Foliage fern-like. Panicles of pure white flowers produced in the greatest profusion.

METALLICA—Elegant; has glossy leaves, shaded with green, crimson and olive, with a peculiar lustre over all; large, dark pink flowers. Price, 10 cents each.

MARGUERITE—Similar to Metallica; leaves bronzed green; light rose-colored flowers. Price, 10 cents each.

MRS. C. A. TOWNSEND, a New Ornamental Begonia—This new Begonia is indeed one of the most beautiful varieties that I ever have had the pleasure to offer. It belongs to the Reginifolia family. The leaves are of the Rex nature, rather irregular, of a charming, lustrous metallic green color, the under surface deep red at ribs, shading out to carmine. An unusually profuse bloomer, flower of a delicate light pink borne on long footstalks. Price, 20 cents each; 3 for 50 cents.

NITIDA ROSEA—A strong, profuse-blooming variety, immense panicles of rose-colored flowers. Price, 10 cents.

NITIDA ALBA—Similar in every respect to Nitida Rosea but with white flowers.

NEW BEGONIA, PRESIDENT CARNOT—In style of Rubra, but more than twice as large, upper side deep green, under side purplish red, flowers beautiful coral red in large pendant panicles. A grand flowering variety. Price, 15 cents each.

ROBUSTA—The stock, stem and under side of the leaf are Indian red, the upper side of the leaf glossy olive green. The flowers are of a beautiful, bright rose color.

RUBRA—Strong growing with slender branches, gracefully drooping under heavy waxen leaves and pendant panicles of coral colored flowers as large as a hand. Price, 10 cents each.

SANDERSONII—Coral Begonia. The flowers are of a scarlet shade of crimson, borne in profusion. Leaves slightly edged with scarlet. Price, 10 cents.

THURSTONII—Bright red foliage and veinings underneath the leaves, and bright metallic green shading to red in the younger growth on top. The flowers are of a beautiful deep pink in bud, but when expanded become a beautiful shell pink, charming variety. Price, 10 cents.

VERNON—Excellent as a bedding stock, flowering throughout the whole season until stopped by frost. Foliage rich glossy green, often shaded deep bronze. Flowers at first opening are a deep red, changing to a beautiful clear rose in the fully open flower. Price, 10 cents.

WASHINGTONII—Strong, robust grower, with large, deep-green foliage, flowers in immense panicles of pure white tinted with pink. Price, 10 cents each.

ZEBRINA, "ZEBRA BEGONIA"—Beautiful thick, leathery green leaves, with lighter markings running across the leaves, making a distinct and lovely plant. Price, 10 cts.

10 FINE BEGONIAS MY SELECTION ONLY FOR 50 CENTS.

FLOWERING FUCHSIAS. Price, 8 cents each, except where noted.

Double Corolla Varieties.

AVALANCHE—Rich, golden foliage; large purple flowers.
ELM CITY—Sepals a rich crimson; corolla a deep purple.
JOSEPH ROSAIN—Scarlet tube sepals; violet blue.

JUPITER—Is a sport from Phenomenal, and is similar to it in every respect, except in the coloring of the corolla, is a beautiful shade of magenta, dark crimson veins.
MOLESWORTH—Double white corolla, sepals scarlet.

MRS. E. G. HILL—The tube and sepals are a bright red, reddish crimson color; corolla extra large, full and double white; flowers of the largest size.

PURPLE PRINCE—Tube and sepals a waxy carmine scarlet; corolla rich, velvety purple.

ROSAIN'S PAITRE—Very free bloomer and quite early; tube and sepals rosy carmine; corolla pure white.

STORM KING—Corolla beautiful bluish white, veined with carmine; tube and sepals carmine red.

SAPALY FRERES—Color of sepals a bright coral red; corolla violet and carmine red. One of the prettiest.

SNOW FAIRY—This variety stands first among all double white Fuchsias for profuseness of bloom, earliness, dwarf, compact growth.

PRES. CARNOT—Rich mauve corolla; deep crimson sepals. Price, 10 cents each.

M. ALPHAND—Very large recurring sepals of bright scarlet; very large corolla of soft reddish violet.

PRESIDENT GUNTHER—Light prune-colored corolla, with red sepals.

Single Corolla Varieties.

ARABELLA—Tube and sepals white, corolla rose color.

ANNE EARLE—Carmine corolla, waxy white sepals.

BLACK PRINCE—Red sepals and light carmine corolla; one mass of buds and bloom all year.

CONSTANCY—Corolla rich carmine; sepals white.

DUKE OF ALBANY—Purple, drooping flowers; very fine.

EARL OF BEACONSFIELD—Deep orange corolla.

LOTTIE—Purple, drooping flowers; very fine.

LUSTRE—Tube and sepals white, vivid crimson corolla.

MONSIEUR THIBAUT—Splendid, large, handsome foliage, green tint, flowers of unusual size, sepals dark red, corolla rose vermilion, tinted violet.

ORIFLAMME—Prune-colored corolla, crimson sepal.

PURITANA—Grand, white flower, corolla long and large.

ROSE OF CASTILE—Bluish pink sepals, violet corolla.

RENEW—Large flower of fine form, purple corolla.

SPECIOSA—Corolla orange scarlet, sepals white.

RIFFIARD—It proves to stand the sun, as it blooms in the open ground all Summer. Flowers, the corolla is crimson, sepals scarlet. Price, 15 cents each.

BENJAMIN PEARSON—Tube and sepals rosy red, corolla, crimson and purple, rather small, but freely produced.

CARL HALT—Corolla crimson, striped white, distinct.

MINNESOTA, New—Corolla deep rose, tube and sepals white. Price, 10 cents.

10 Fine Sorts of Flowering Fuchsias for 50 cents, my selection only, either Double or Single, or half of each.

VIOLETS. THE SWEETEST FLOWER THAT GROWS.

10 cts Each; 3 for 25 cts. Except Where Noted.

THE ENTIRE SET OF 8 KINDS FOR 50 CENTS.

FARQUHAR—A beautiful, new-double Violet; strong and healthy grower; perfectly hardy, and free flowering; producing in the greatest abundance lovely deep and double flowers of delicious fragrance, borne on long stems. Price, 15 cents each; 2 for 25 cents.

LADY HUME CAMPBELL, the New Ever-Blooming Violet—This grand new Violet is a true perpetual bloomer and enormously productive; the flowers are very large, often the size of a half dollar, perfectly double, like little lilies; very fragrant and of lovely azure-blue.

LUXONNE, New—Appears like a big blue Pansy bloom, and has the advantage of flowering continuously from early in September until April. It is a beautiful rich but soft violet, perfect color, with strong stout stems, and very fragrant.

MARIE LOUISE—To contrast with white, I offer this double deep bluish purple, sweet-scented variety, recently introduced. Desirable for pots or gardens. Plants hardy and bloom freely.

SWANLEY WHITE OR QUEEN OF FRAGRANCE—This beautiful new double White Violet is unquestionably the finest double violet in existence, and is a decided acquisition to even the smallest collection of plants.

THE CALIFORNIA—A sturdy grower, with dense, heavy foliage. Flowers single, intensely fragrant. Color, a clear violet purple that does not fade. The flowers are as large as a silver dollar, are borne on stems ten to twelve inches long.

HARDY DOUBLE ENGLISH VIOLET—This violet is entirely hardy, perfectly double, a deep violet purple color, deliciously fragrant.

NEW FRENCH VIOLET, PRINCESS OF WALES—Recommended as the best violet in existence; of hardy, vigorous growth, and free-blooming; stems 10 to 12 inches long. Large, healthy and heavy foliage; grand single flowers; true blue color, symmetrical form, nearly as large as a Pansy blossom and delicately fragrant. Price, 15 cents; 2 for 25 cents.

GRACEFUL FERNS.

Price, 15 Cents Each, Except Where Noted.

ADIANTUM OUNEATUM—The popular Maiden Hair Fern. Very beautiful and graceful.

DAVALLIA STRICTA—One of the finest ferns for growing in a decorative plant or planting out. The fronds are of a strong texture and of a beautiful shade of green.

PTERIS ARGYREA (Silver Fern)—A very showy, strong growing Fern, with variegated foliage; fronds large, light green with a band of silvery white down the center of each, very distinct.

PTERIS TREMULA, or **SHAKING FERN**—One of the finest Ferns for house decoration, growing very rapidly and throwing up large, handsome fronds. Easily grown and very popular.

NEPHROLEPSIS CORDATA COMPACTA—It is a strong growing compact habit, attaining a height of two feet when fully matured. Its fronds are of a dark green, of erect growth, having just enough arch to make them graceful. Price, 20 cents each; large size, 50 cents each.

SWORD FERN (Nephrolepis Exaltata)—This beautiful Fern is excellent for outside planting in shady borders. It is a very fine plant for hanging pots or baskets on the piazza in Summer, and conservatory or window in Winter. Price, strong plants, 15 and 25 cents. Large plants, 50 cents each. Extra large specimen plants, \$1.00 each.

"THE BOSTON SWORD FERN"—Nephrolepis Exaltata Bostonensis—Differs from the ordinary Fern in having much longer fronds which frequently attain a length of four feet. These fronds are arched and droop over very gracefully on account which it is frequently called the Fountain Fern. This drooping habit makes it an excellent plant to grow as a single specimen on a table or pedestal. Price, 20 cents each; strong plants, 50 cents each. Extra large specimen plants, \$1.00 each.

BLACK CALLA, ARUM SANCTUM, Solomon's Lily, or the Black Calla of Palestine—This magnificent flower often measures one foot in length and five to eight inches in width. Beautifully shaped and turned, sweet scented. The color is of the richest velvety purple black, while the outside is of pleasing green. Sure to bloom if planted in rich soil two inches below the surface. Price, 25 cts. each.

CALLA SPOTTED—**RICHARDIA ALBA MACULATA**—This plant is always ornamental, even when not in flower, the flowers being beautifully spotted with white. In other respects the plant is the same as the old favorite, White Calla, excepting being of smaller habit. Price, 15 cents each.

CALLA, WHITE OR LILY OF THE NILE—This old favorite is too well known to require any description. I offer dry roots, as they are superior for forcing and Winter-requirement purposes; they come into bloom quickly and require less room—making less foliage. Price, extra large dormant roots, 25 cents each; first size, 15 cents each; one year old plants, 8 cents each.

NEW CALLA, LITTLE GEM—This little pigmy rarely exceeds twelve inches in height and blooms most abundantly. The flowers are not more than half the size of the common variety, and therefore can be used with telling effect in bouquets. It is in every way superior as a house plant to the larger growing variety. Price, 15 cents each; extra large bulbs, 35 cents each.

ASPARAGUS SPRENGERI, or **EMERALD FEATHER**—A most desirable new species, especially useful to grow as a pot plant for decorative purposes or for planting in suspended baskets. The fronds are frequently four feet long, are of a rich shade of green, and most useful for cutting, retaining their freshness after being cut for weeks. An excellent house plant, as it withstands dry atmosphere and will succeed in almost any position. Price, 15 and 25 cents each.

SANSEVERIA ZEALANICA—A beautiful plant especially adapted for the decoration of drawing rooms and halls, as it stands drought and dust with impunity, and requires scarcely any water. The leaves are very beautifully striped crosswise, with broad white variegations on a dark background. Fine plants, 10 and 25 cents each; extra large specimen plants, 60 cents each.

SILVER STRIPED PEPEROMIA—So thick and wavy-like are the leaves of this parlor gem that nearly everyone takes it to be an artificial plant. The leaves are distinct, variegated white and green, and have the appearance of being powdered with frosted silver. Price, 10 cents each.

OTAHEITE ORANGE—This valuable and distinct variety is a dwarf compact grower with glossy, deep green foliage, producing a wonderful profusion of pale white flowers of the most delicious fragrance. Identical with the much-sought-for blooms of southern orange groves. Fruits immediately after flowering, bearing fruit about one-half the size of an ordinary orange, retaining in a marked degree their sweetness. Can not be equaled as a winter-blooming pot plant for house culture, of easy culture. Flowers and fruits when but twelve to fifteen inches high. Price, 10 cents each; large, strong plants, to bloom and bear profusely at once, 25 and 40 cents each.

ASPARAGUS PLUMOSUS NANUS, or **LACE FERN**—One of the finest and most of our foliage plants. The leaves are a bright green, gracefully arched, and as finely woven as the finest silken web, lasting and retaining their freshness for weeks. Price, 16 cents each; 2 for 25 cents.

ARAUCARIA EXCELSA, Norfolk Island Pine—Various names have been suggested for this grand plant to properly convey to the mind the appearance of it. Some have called it the "Christmas Tree Palm" from its resemblance to a Christmas tree; others have called it the "Star Palm." Deep green, feathery foliage, in whorls or tiers, raising one above the other at regular distances; its symmetry of form, grace and beauty of foliage are unequalled. Easily grown in the house; highly ornamental. Extra fine plants, \$1.00 and \$2.00 each; genuine stock.

INDIA RUBBER TREE, FICUS ELASTICA—Large, smooth leathery leaves, evergreen foliage. One of the finest house plants grown; plants attain large size and tree shape. Each new leaf is enclosed in a long, coral-red envelope looking like a great, red flower bud. Fine for lawn, bay window or house decoration. Thrives under any condition in dark or light rooms. Price, fine, strong plants, 50 cents each; large plants, \$1.00 by express.

CYPERUS—The well-known Umbrella Plant. Price, 10 cents each.

JASMINE GRANDIFLORUM—Flowers pure white, star-shaped of exquisite fragrance. Price, 10 cents each.

JASMINE, MAID OF ORLEANS—This plant I place as peer over existing sorts. Easy culture, fine grower, good bloomer, elegant fragrance, and waxy appearance. Price, 20 cents each; large plants, 40 cents.

JASMINE GRACILLIMUM—Dense cluster of pure white, fragrant flowers. Price, 10 cents each.

JASMINE REVOLUTUM—A yellow-flowered Jasmine, nearly hardy and exquisitely fragrant. Price, 10 cents each.

CAPE JASMINE—Well known flower for its delicate fragrance and beauty of its flowers, white and double. Price, 15 cents each.

JASMINE, GRAND DUKE OF TUSCANY—Very easily grown, even small plants bearing a profusion of waxy double, cream white flowers, having a delicate perfume. Price, strong plants, 20 and 50 cents each.

VALUABLE PALMS.

SPECIAL OFFER

I will send Five Choice Palms of my selection only, for 50 Cents, postpaid. Indispensable for all Decorations for the House they increase two fold in value each succeeding year.



PALM LIVISTONA ROTUNDFOLIA

MINATURE FAN PALM, LIVISTONA ROTUNDFOLIA—Resembling *Livistona Borbonica*, a very much more dwarf and compact in habit, and having much smaller and handsomer leaves, which are of the most perfect shape. The leaves are circular in form, only about eight to ten inches in diameter, and deeply toothed. Very small plants throw up an unusual number of these beautiful fronds, furnishing the plant, making very perfect specimens when only a foot high—plants of this height having as many as a dozen well developed, perfect leaves. It makes a lovely plant for table decoration. No Palm makes such perfect specimens when small, so it has a distinct place among decorative plants, and is a charming addition to the limited number of plants really adapted for house decoration.

LATANIA BORBONICA—The well known favorite Fan Palm, beautiful in all stages of growth. No plant is more easily grown, and none more tenacious of life, enduring alike the dust, cold and heat from open windows and gas-heated air of our dwellings. The demand for this particular kind is perhaps five times that of any other. Leaves large, fan-shaped, of cheerful green color. Plants of hardy constitution, and adapted to all decorative purposes, within or without doors; appreciated by all the plant-loving community. With age the plant attains noble proportions, and becomes very valuable. When too large for the house it can readily be sold. Small plants, 10 cts.; extra large stocky plants, 50 cts., \$1, \$2, \$3 and \$5.

SEAFORTHIA ELEGANS—A most useful conservatory or lawn plant. Leaves from 2 to 10 feet long. Largely grown on account of its hardy constitution and useful and graceful character. They soon develop into noble specimens. Nice young plants, 20 cts each; large plants, 50 cts and \$1 each.

ARECA LUTESCENS—This majestic Palm is without a peer for strength and elegance combined. Its dark glossy green leaves are gracefully curved on slender stems, and the entire foliage is gracefully disposed. The trunk and stems are a golden yellow, irregularly spotted with bronzy green, giving it a peculiar charm. Small plants, 25 cts.; large plants, 50 cts.; extra large stocky plants, \$1.50 and \$2.50.

PHŒNIX RECLINATA—Beautiful reclinate foliage. A graceful and exceedingly ornamental Palm. Nice plants 25 cents, 50 cents, \$1.00 and \$2.00 each.

Very scarce. Price for nice young plants, 50 cents; those showing full character, \$1.00 and \$2.00.

CORYPHA AUSTRALIS—One of the most valuable greenhouse Palms; leaves very circular, margin divided into small segments, dark green; of easy culture. Small plants, 25 cts.; large ones, 50 cts. each.

KENTIA BELMOREANA—The Kentias are among the best of the Palm species for general cultivation, being almost impregnable against diseases. This variety is one of the best in its class, gracefully disposed; as a decorative plant for the window, dinner table or conservatory it scarcely has an equal. Small young plants, 40 cents, extra good plants, \$1; extra strong, stocky plants, \$2 each.

WASHINGTONIA FILLIFERA—A beautiful Palm; has elegant dark green fan-shaped leaves, from which hang thread-like filaments. Price, 15 cents.

TRY SOME OF MY BIG BARGAIN SETS AT 50cts. Each. Any 3 Sets for \$1.25 ; Any 5 Sets for \$2.00.

When Ordering Use both Name and Number. I cannot make any change in these collections and they are strictly my choice varieties.

COLLECTION A—12 Beautiful Everblooming Roses. In this collection I select and will send the very best varieties and distinct colors.

COLLECTION B—10 Hybrid Perpetual Roses. Distinct colors. The Roses offered in this collection are perfectly hardy, and will stand the severest Winter without protection.

COLLECTION C—6 New and Rare Roses. This collection consists of the choice and rare Roses.

COLLECTION D—10 Choice Assorted Carnation Pinks. Next to a bouquet of Rosebuds comes a bunch of Carnations.

COLLECTION E—5 Everblooming Roses, 5 Carnations. **COLLECTION F**—10 Choice Double-Flowering Geraniums.

COLLECTION G—10 Single-Flowering Geraniums.

COLLECTION H—10 Geraniums, 5 Double, 5 Single, ast.

COLLECTION I—10 Assorted Geraniums. This collection embraces 1 Ivy-Leaved, 1 Scented, 1 Bronze, 1 Silver-Leaved, and 3 Double and 3 Single-Flowering Geraniums.

COLLECTION J—15 Assorted Mammoth Flowering Verbenas, with large and beautiful colored flowers. Very choice.

COLLECTION K—10 Fine Flowering Begonias. In this collection will be found our finest varieties.

COLLECTION L—5 Beautiful Dwarf Everblooming Cannas.

COLLECTION M—10 Fine Fuchsias, double and single.

COLLECTION N—12 Chrysanthemums. Prize Winning. All distinct, large-flowering varieties; each a gem.

COLLECTION O—12 Coleus, new and distinct varieties. The beautiful colors displayed in this plant are beyond description. "The Gardener's Paint Box."

COLLECTION P—10 Basket or Vase Plants, trailing vines and foliage plants, Only such as are best for this purpose.

GET UP A CLUB AND GET YOUR COLLECTIONS FREE. IT IS EASY TO DO AT THESE PRICES.

REMEMBER—Plants guaranteed to arrive in good condition. "The best and the cheapest" are my mottoes.

COLLECTION Q—10 Assorted Flowering Choice Plants for pots. Try this collection; you will find some gems in it.

COLLECTION R—20 Pansy Plants from my Rainbow Strain. Mammoth flowers and gorgeous colors.

COLLECTION S—10 Plants for the Garden or the House; 2 fine Begonias, 2 Everblooming Carnations, 2 Choice Roses, 2 Lovely Fuchsias, 2 Sweet Heliotropes.

COLLECTION T—10 Assorted Plants for Cemetery planting. White Flowering. A very useful collection for those who wish to beautify their lots in the cemetery.

COLLECTION U—12 Double White Fragrant Tuberosa Bulbs.

COLLECTION V—12 Assorted Gladiolus Bulbs. A fine mixture; beautiful orchid-like flowers; fine for cutting.

COLLECTION W—4 Beautiful Varieties of Rex Begonias, with large and beautiful colored leaves. A bargain.

COLLECTION X—8 Choice Hibiscus with immense and gorgeous colored flowers. Fine effects in pots and beds.

COLLECTION Y—26 Varieties of Popular Flower Seeds; sure to grow and bloom till frost comes. A complete flower garden in itself. 26 fine, first-class varieties, of my selection. Selected to bloom continuously from early Summer to late Autumn.

COLLECTION Z—My Kitchen Garden Collection of 20 Varieties of choice Vegetable Seeds, sure to grow and produce enough vegetables for an ordinary family, first-class choice varieties.