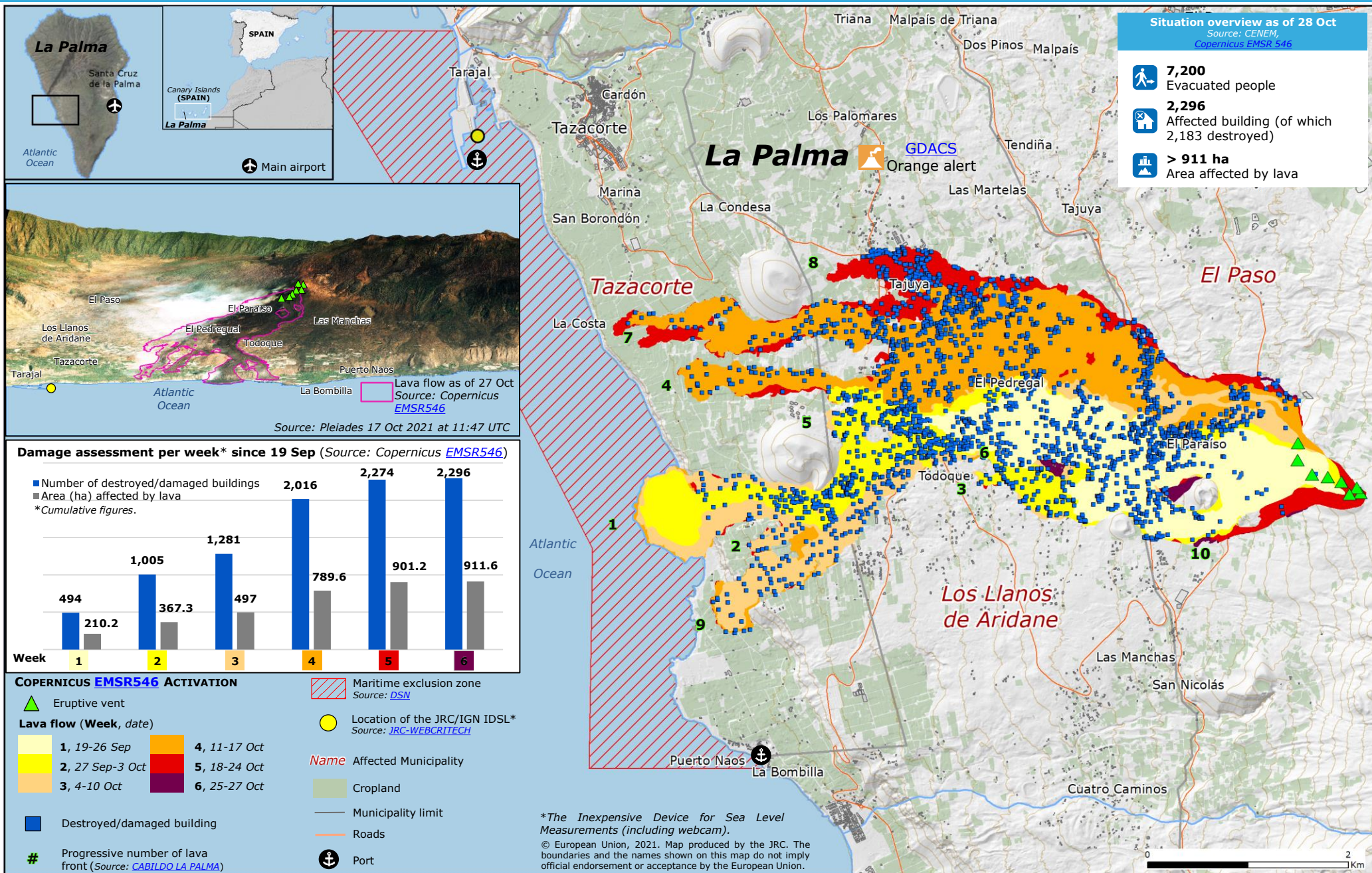
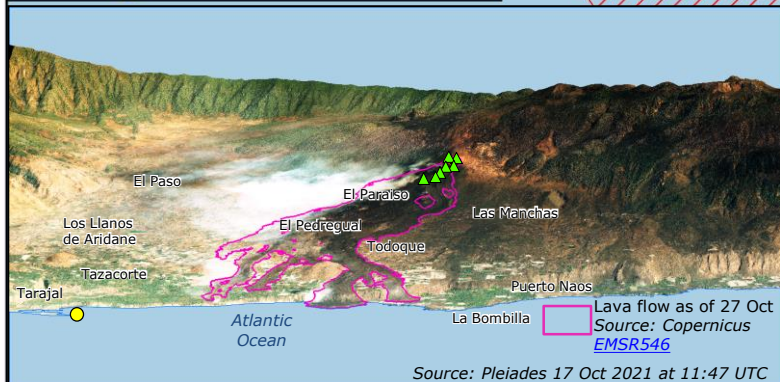


# Spain, Canary Islands (La Palma) | Cumbre Vieja volcanic eruption

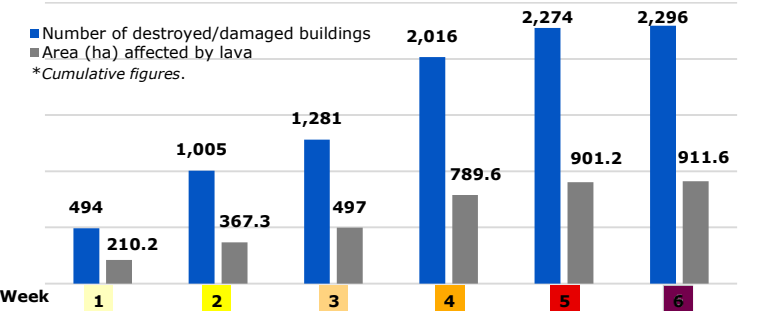


**Situation overview as of 28 Oct**  
 Source: CENEM, Copernicus EMSR 546

- 7,200**  
Evacuated people
- 2,296**  
Affected building (of which 2,183 destroyed)
- > 911 ha**  
Area affected by lava



**Damage assessment per week\* since 19 Sep** (Source: Copernicus EMSR546)



**COPERNICUS EMSR546 ACTIVATION**

- Eruptive vent
- Location of the JRC/IGN IDSL\*  
Source: JRC-WEBCRITECH
- Maritime exclusion zone  
Source: DSN
- Lava flow (Week, date)**
  - 1, 19-26 Sep
  - 2, 27 Sep-3 Oct
  - 3, 4-10 Oct
  - 4, 11-17 Oct
  - 5, 18-24 Oct
  - 6, 25-27 Oct
- Name** Affected Municipality
- Destroyed/damaged building
- Cropland
- Municipality limit
- Roads
- Progressive number of lava front (Source: CABILDO LA PALMA)
- Port

\*The Inexpensive Device for Sea Level Measurements (including webcam).  
 © European Union, 2021. Map produced by the JRC. The boundaries and the names shown on this map do not imply official endorsement or acceptance by the European Union.