

## **Historic, Archive Document**

Do not assume content reflects current scientific knowledge, policies, or practices.



DEC 20 1915

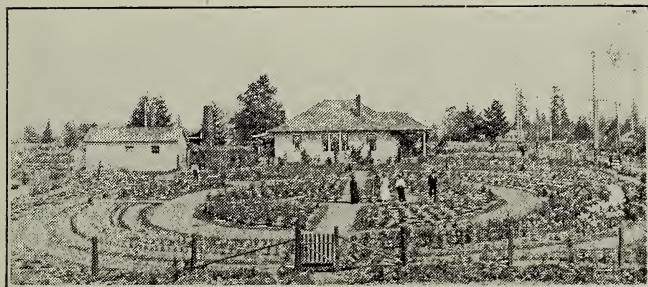
1915

JOS. T. MITCHELL  
Pres't.M. G. MITCHELL  
Sec'y.

Price list

# Mitchell Nursery Company

LARCHMONT, TACOMA, WASH.



Cor. South A and Parker Sts. (City Limits) near  
Larchmont Station, Old Puyallup Car Line.  
Five Cent fare. One block from Pacific  
Ave on Road to Mt. Tacoma

Mail Address: Box 9, R. F. D. No. 4, Tacoma  
Telephone: Madison 207

**"Beauty is Wealth; raise a plenty of it and be Rich"**



**W**E are prepared to furnish for fall planting a choice line of Roses, Hardy Garden Plants, Bulbs, Hardy Climbing Vines, Fruit and Nut Trees, Berry Plants and Vines, Ornamental and Shade Trees and Flowering Shrubs, Evergreens and English Holly.

## FALL PLANTING

By planting in the fall a year in effect is gained. Beautify your grounds during the fall with shrubbery and hardy plants that bloom from early spring until after frost, the kind that do not require annual replacing, but grow more beautiful year after year and make your surroundings charming and attractive. Properly planted grounds are a delight to cultured tastes.

## YOUR FLOWER GARDEN FOR "1915"

This coming year means a great deal for all the Pacific Coast. Thousands of visitors will be welcomed to our State; they will come in immense numbers to see the beautiful Panama-Pacific Exposition, and not a few who have long wanted to visit the Puget Sound country will take this opportunity of seeing the Exposition and this part of the country at the same time. They may have waited years for this trip. The summer climate of this region is unsurpassed anywhere, and our roses are the finest in the land. Nature will do her part and provide the summer climate. Let us do our part and help give to every visitor a memory of blossoms everywhere in this country — a memory to carry with him wherever he goes and as long as he recalls his trip: That Tacoma's summer climate is unequalled and that her roses and other flowers are rarely beautiful. Let these be forever associated.

There is no better advertisement of the salubrity of our climate and fertility of our soil than the masses of splendid roses growing in our gardens, parkings, roadways, etc.

We must plan and work. You must plant your garden and tend it for the glory of Tacoma; and your reward will be the delightful, beautiful, fragrant flowers which you will have about you. Plant bulbs, roses, perennials, etc., now in the fall, and plant in profusion.

### BULBS

Among the most desirable spring-flowering bulbs are the hyacinths, tulips, crocus, daffodils, Spanish iris, etc. We have a good stock of these bulbs and will be pleased to quote prices on application.

We would call special attention to the Spanish iris, as the cost is small—20 cents per dozen, or \$2.00 per hundred—while the flowers are very beautiful, and the bulbs increase from year to year.

### FALL IS THE TIME TO PLANT

By planting trees and shrubs after the first frost is in the ground, the tops are dormant and all the

life of the whole plant is in the root. Naturally the roots have become established and started by spring and grow much faster—whereas the same shrubs and bulbs planted in the spring will take nearly all summer to attain the same growth.

## PERENNIALS FOR PLANTING IN HARDY BORDERS, ROCKERIES, CEMETARIES, ETC.

We have the finest collection of perennials in the Northwest, including many of the rare hardy phloxes, delpheniums, sweet william, canterbury bells, fox-gloves, hollyhocks, columbines, etc. Complete list furnished on application. Prices from 15 cents to 20 cents each, or \$1.50 to \$2.00 per dozen.

For complete list see pages 7 and 8.

## FLOWERS AND PLANTS FOR MEMORIAL DAY

The following plants are always in bloom on Memorial Day and are therefore suitable for cemetery planting or for cut flowers for decorating graves:

Early peonies, columbine, daisies, pansies, German iris, Oriental poppies, Myosotis (forget-me-not), asperula, etc. We will be glad to furnish information in regard to any of these plants upon application.

## HERBS

Sweet, Pot and Medicinal Herbs as Chives, Fennel, Peppermint, Rosemary, Sage, Hardy Sweet Majoram, Beifuss and Tarragon, 15 cents each, \$1.50 per dozen.

## MODERN HARDY PHLOX

Are still the leaders for cemetery work, rock gardens, old-fashioned gardens and up-to-date shrubbery. The planting of Phlox should be done from the end of September until a very hard frost stops all plant life. Transplanting can, of course, be done in the Spring, but the blooming period will be later.

At this place we would like to call attention to the well-known circumstance that the hardy and perennial phlox grow stronger every year, and that their beauty all through as an ornament of the garden or the grave increases with every year. Once planted where sun

and rain have free access to them they will last, practically speaking, forever. How the plants grow and whether they are beautiful can be seen in the garden. Every visitor is welcome to the garden, as we fully understand the value of the intelligent recommendation to friends and neighbors which we are sure all flower lovers will give these plants.

## ROSES

We have a good stock of all the standard and many of the new varieties of roses. The standard varieties such as the Madame Caroline Testout, Frau Karl Druschki, Papa Gontier, Kaiserin Auguste Victoria, Maman Cochet, La France, etc., strong two-year-old plants, 35 cents each, \$3.50 per dozen. The newer varieties range from 40 cents up. List and prices on application.

## SPECIAL OFFER

We are making a special offer of one dozen strong two-year-old plants, comprising a grand assortment, including a number of the choice new varieties running through the different colors.

Variety and Color—	Price
Gen. McArthur—Crimson Scarlet . . . . .	\$0.40
Helene Canbier—Copper Yellow . . . . .	.35
Perle von Goddesburg—Cream White . . . . .	.35
Wellesley—Silvery Pink . . . . .	.35
Madame Leon Pain—Silvery Salmon . . . . .	.35
Hugh Dickson—Brilliant Crimson . . . . .	.35
Johann Wessenhoff—Pale Yellow . . . . .	.35
Ulrich Brunner—Cherry Red . . . . .	.35
Winnie Davis—Apricot Pink . . . . .	.35
Mrs. Arthur Robt. Waddell—Copper Yellow.	.50
White Cochet—White Tinged Pink . . . . .	.35
Frau Karl Druschki—Pure White . . . . .	.35
	—————
	\$4.40

The above dozen roses delivered free anywhere in the State for \$3.50.

In climbing Roses we have Madame Alfred Carrier—the best white; Reine Marie Henrietta—the best red; Madame Caroline Testout—the best pink; Rave D'Or—the best yellow. We have also the climbing

Cecil Brunner, Dorothy Perkins, Flower of Fairfield—ever-blooming red rambler; Dr. Van Fleet, Silver Moon, American Pillar, etc. Prices from 35 cents to 50 cents each.

### ANNIVERSARY GIFTS

We would call your attention to the fact that the gift of a dozen rose bushes, a fine peony, a dozen or a hundred trumpet daffodils, a berry-bearing holly, scarlet hawthorne, etc., will in many instances prove a far more acceptable remembrance than many more costly presents, as the roses, spring-flowering bulbs, perennials, shrubbery, etc., will last for many years and give renewed pleasure each season, while many other gifts become old and are cast aside.

By planting a berried holly you can in a few years raise all your Christmas decorations.

### FLOWER EXHIBIT

We have made arrangements with Messrs. Rhodes Bros. to have on exhibition during the entire flowering season samples of our spring and summer-flowering bulbs, such as daffodils, tulips, lilies, peonies, iris; also roses, perennials of all kinds, including our new choice varieties of hardy phlox, columbine, delphiniums, etc. These samples will all be named, and orders can be left with Messrs. Rhodes Bros. for any of the plants on exhibition.

Our nursery is also open to visitors every day, and we will be glad to give any information in regard to the plants and flowers, their culture, period of bloom, etc., that may be desired. We have spared no pains to accumulate an attractive stock of choice plants, shrubbery, etc., and will be glad to show visitors around the grounds at any time.

### SPECIAL PRICE ON SPRING-FLOWERING BULBS FOR NATURALIZING EFFECTS

We have some mixed bulbs, consisting of single and double daffodils, narcissus of various kinds, all choice varieties, that we are offering at 20 cents per dozen, or three dozen for 50 cents, or \$1.25 per hundred. If you are in need of bulbs in large quantities for landscape work this is your opportunity to secure them at a very low figure.

## LANDSCAPE GARDEN SERVICE

We have made arrangements with Mr. Howard Evert Weed, who recently lectured here on "A More Beautiful Tacoma," to furnish planting plans for any of our customers who have new grounds or who are not satisfied with the present arrangement of their gardens. Mr. Weed is a landscape architect of recognized ability and taste, and his advice in matters of this kind will be found of great value.

The cost of such plans will be very moderate and will well repay the investment by having the planting properly done to start with, thus saving later changing and rearrangement.

## FRUIT TREES, BERRIES, ETC., FOR SUMMER HOMES AT THE BEACHES

We would call your attention to the desirability of planting out some summer apples, cherries, plums, etc., at your beach home; also currants, gooseberries, loganberries, blackberries, blackcaps, strawberries, etc., as in this way you will have the benefit of the fresh fruit during the summer months, while the addition of the trees, berry bushes, etc., will increase the value of your property.

This applies also to many of the perennials, such as foxglove, delpheniums, sweet william, Shasta daisies, etc. These perennials require no watering and but little care and afford a wealth of flowers during the summer months.

## FRUIT TREES

We have some especially fine two, three and four-year-old fruit trees. These trees have been transplanted each year, thus insuring large fibrous roots, and will give the best of satisfaction. They are all varieties best adapted to this side of the mountains, come into bearing early and bear abundantly. Among the apples are the Gravenstein, Wagner, Wealthy, Grimes Golden, Yellow Transparent, Jonathan, Rome Beauty, etc.

In cherries we have the Bing, Lambert and Royal Ann, also the pie or sour cherries, which do particularly well in this section, and for which there is a



ready market. The Puyallup cannery had to refuse orders for ten carloads last season, not being able to procure them.

If you have any vacant cleared land you can make no better investment than to set it out to these fine trees, as it will immediately increase in value more than the cost of the trees and labor of planting, and in a few years will be worth several times its present value, besides being more salable by reason of the improvements.

### BEST HARDY PERENNIALS (For All Requirements)

Varieties—	Height feet.
Achillea ptarmica, fl. pl. The Pearl (Yarrow).....	1½
Altaea rosea fl. pl. (Hollyhocks), asst. ....	6 to 8
Anchusa italica, Dropmore (Sea Bugloss) .....	5
Anemone japonica (Windflower) .....	2 to 3
Anthirrhinum (Snap Dragons), in colors.....	2 to 3
Aquilegia (Columbine), 6 varieties .....	2
Aster Amellius rosea (Hardy Asters) .....	2
Boltonia latisquana (False Chamomile), white ....	4
Bocconia cordata (Plume Poppy) .....	6
Campanula Medium (Canterbury Bells), all colors..	2
Campanula persicifolia (Peach Bells), lavender, blue and white .....	2
Campanula persicifolia Moerheimi, double .....	2
Carnations, assorted .....	3
Coreopsis lanceolata graff (Golden Sunbeam) .....	1½
Delphinium hybridum (Larkspur) .....	3
Dianthus barbatus (Sweet William), in colors ....	1½
Echinopos ritro (Globe Thistle) .....	3
Gaillardia grandiflora (Blanket Flower) .....	3
Gypsophila paniculata, fl. pl. double .....	1½
Helianthus multiflora maxima (Sunflower) .....	6
Helianthus Soleil d'or .....	3 to 4
Iris germanica (German Iris) .....	2 to 3
Iris Kaempferi (Japanese Iris) .....	2 to 3
Latyrus latifolius (Hardy Sweet Peas) .....	3
Lobelia cardinalis (Cardinal Flower) .....	3
Lupinus polyphyllus, blue .....	3
Myosotis palustris (Nixenange), Hardy Forget-Me- Not .....	1
Matricaria exima, Snow Ball (Feverfew) .....	1
Oenothera missouriensis (Evening Primrose) .....	1
Pentstemon hybridum (Beard Tongue) .....	3
Physostegia virginia (False Dragon Head) .....	3
Platycodon Mariesi (Balloon Flower) .....	1
Stockesia cyana (Cornflower Aster) .....	1½
Tritoma Pfitzerii (Red Hot Poker Plant) .....	4
Valeriana cocina (Spurred Flower), red and white.	2
Valeriana officinalis (Garden Heliotrope) .....	3
Yucca filamentosa (Adam's Needle) .....	5 to 8

### PERENNIALS FOR ROCKERIES

Varieties—	Height Feet.
Agrostemea coronaria .....	2
Asperula odorata Wood .....	1½

Varieties—	Height feet.
Arabis alpina grandiflora (Rock Cress) .....	1/2
Bellis ranunculiflora (Little Daisy) .....	1/2
Cheiranthus Cheiri (Wallflower) .....	1 to 2
Heuchera sanguineum (Alum root) .....	1
Iberis sempervirens (Candytuft), white .....	1
Eryngium alpinum (Sea Holly) .....	3
Geum Heldenreichi .....	1 to 2
Hypericum Moserianum (St. John's Wort) .....	1 to 2
Papaver nudicaule (Iceland Poppy) .....	1
Primula veris (Primrose) .....	1/2
Statice incana (Sea Lavender) .....	1 1/2
Veronica repens (Creeper) .....	
Violets .....	
Viola cornuta, G. Wernig (Summer Violet) .....	
Saxifraga pyramidalis .....	3
Alpine Saxifragas, Sedums and Mesembrianthemum, etc. ....	6 to 8 in.

### FREE DELIVERY

We deliver all stock anywhere in the city free of charge. We will also deliver roses, perennials, bulbs, etc., anywhere in the state without extra charge, thus saving our customers express charges on orders of this kind.

Our nursery is reached by the "Old Puyallup" or "Summit" cars, with a five-cent fare; cars every 30 minutes. We are only five minutes' walk from station. We are also close to the main highway to Mt. Tacoma—being one block east from Pacific Avenue at the beginning of the paved road to Spanaway.

Tourists and visitors will be well repaid by a visit to our nursery. Bring your friends out to see us.

"Sire," said Baron Hausman to Napoleon III., defending his plan for widening the streets and planting trees in Paris, "if we make Paris the most beautiful, healthful and attractive city in the world it will be visited by the wealthy classes of all nations, and the money they spend will amply repay the present cost."

This applies equally as well to our own city, and we can within a few years by the united efforts of our people make Tacoma known as

**"THE WORLD'S MOST BEAUTIFUL CITY"**

ADDRESS

**MITCHELL NURSERY COMPANY**  
**LARCHMONT, TACOMA**

Telephone Main 207

*Mitchell*