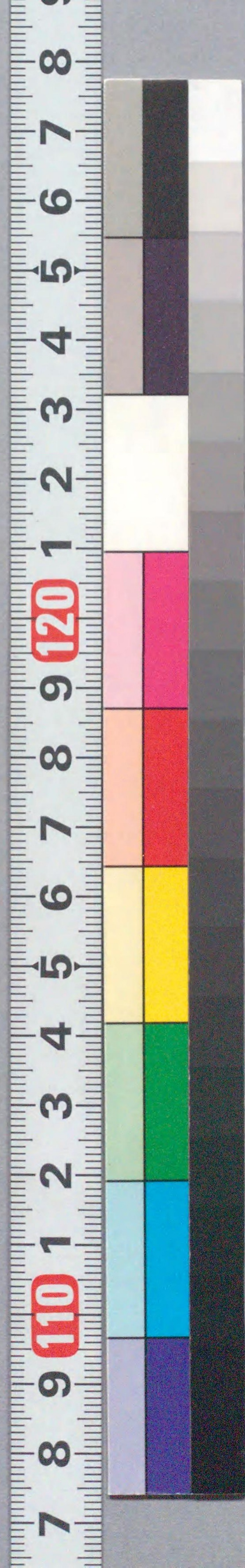




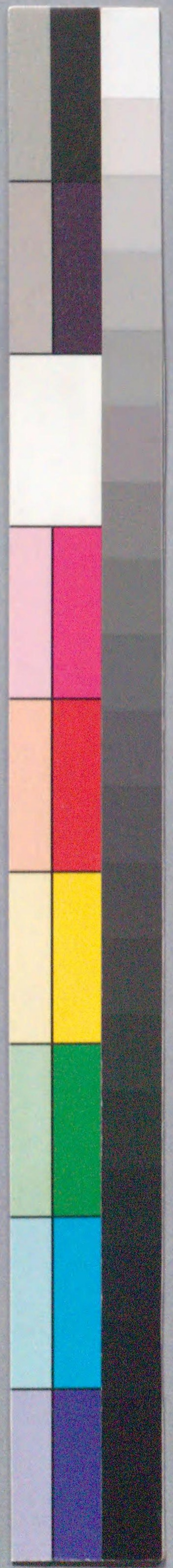
国立国会図書館 大益天神記 5巻 208-271



ガラス使用

大益天神記
徳中作
五巻
五冊

208
271





夫文武一途天下正改ありて諸制の二卷に抑武の
 受て時の四時ありて本は天國本朝をも是と
 分るるは和漢の書小用し文をた里白と論し
 違ふは直極侍りていれりか賢哲は良臣名月侍雲
 中なるる世に於て御一代の臣初秋をく下れとて遂に
 依而元亨釈書朗誦本のぬきとて集めて五一代の
 子々まわしるる人々を合巻五冊の繪双紙に菅原實傳記
 と野と

龜戸東軍府の邊に住る
 五柳亭徳外述

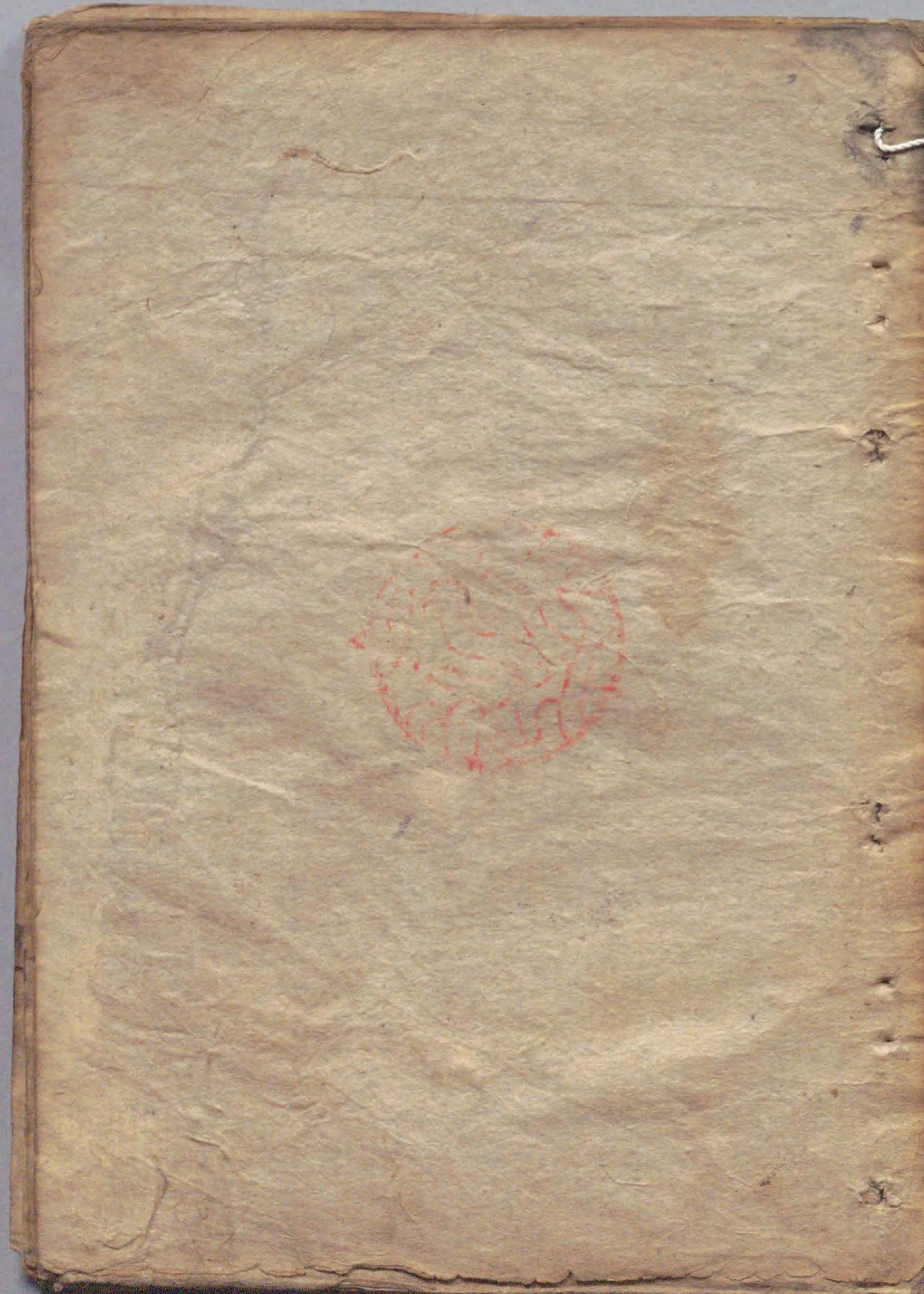


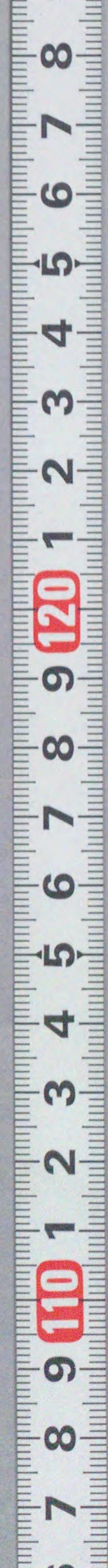
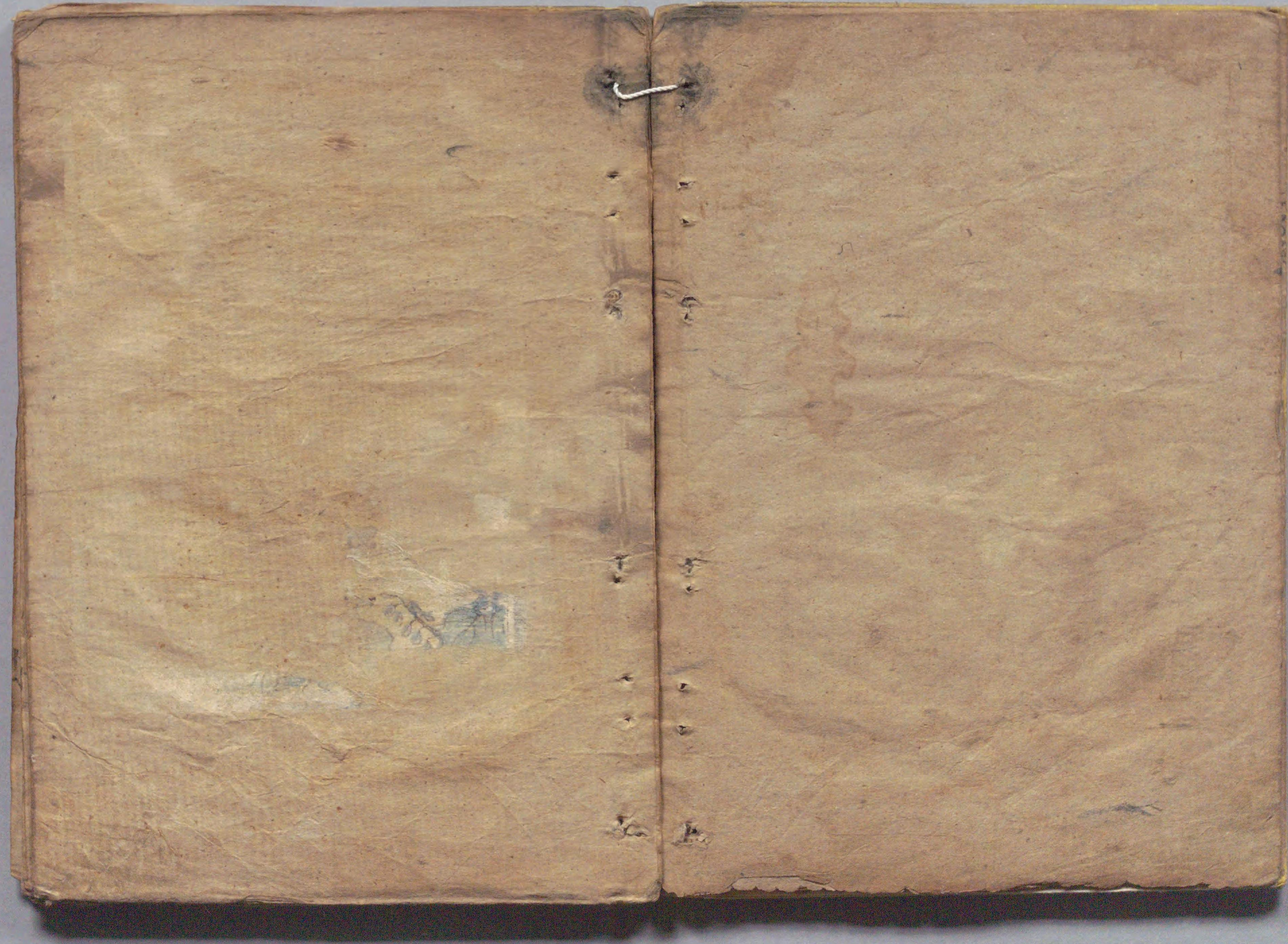






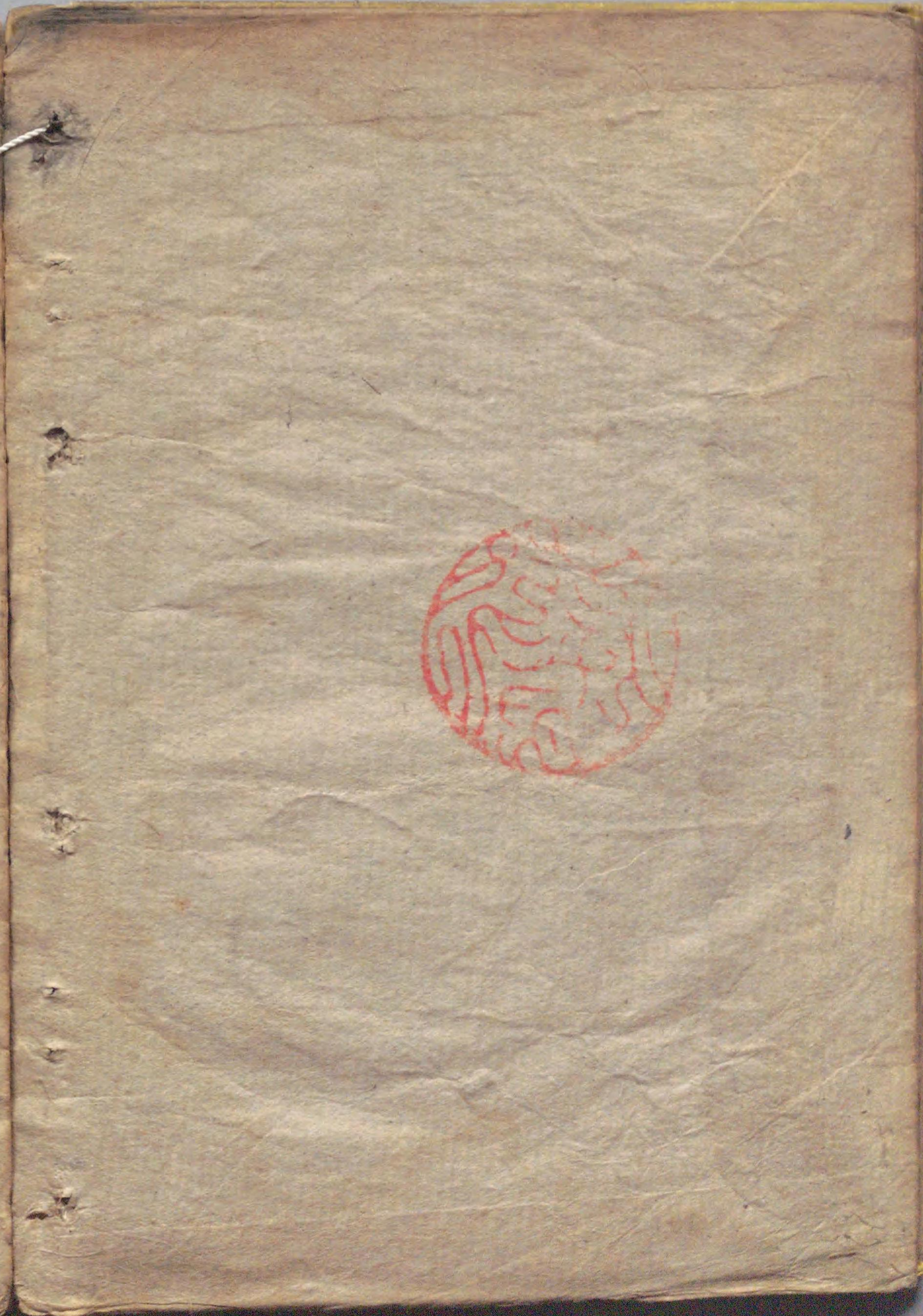


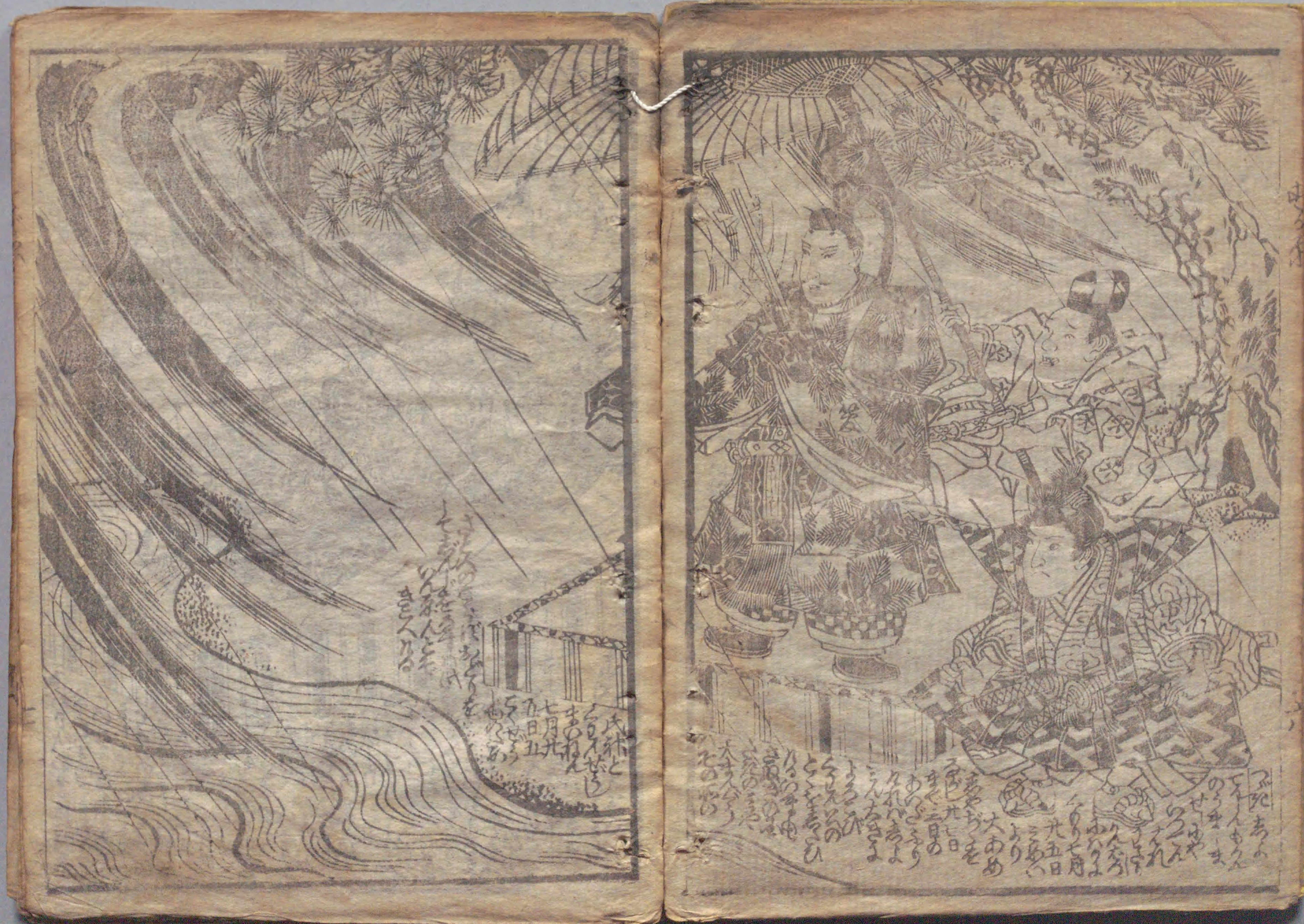




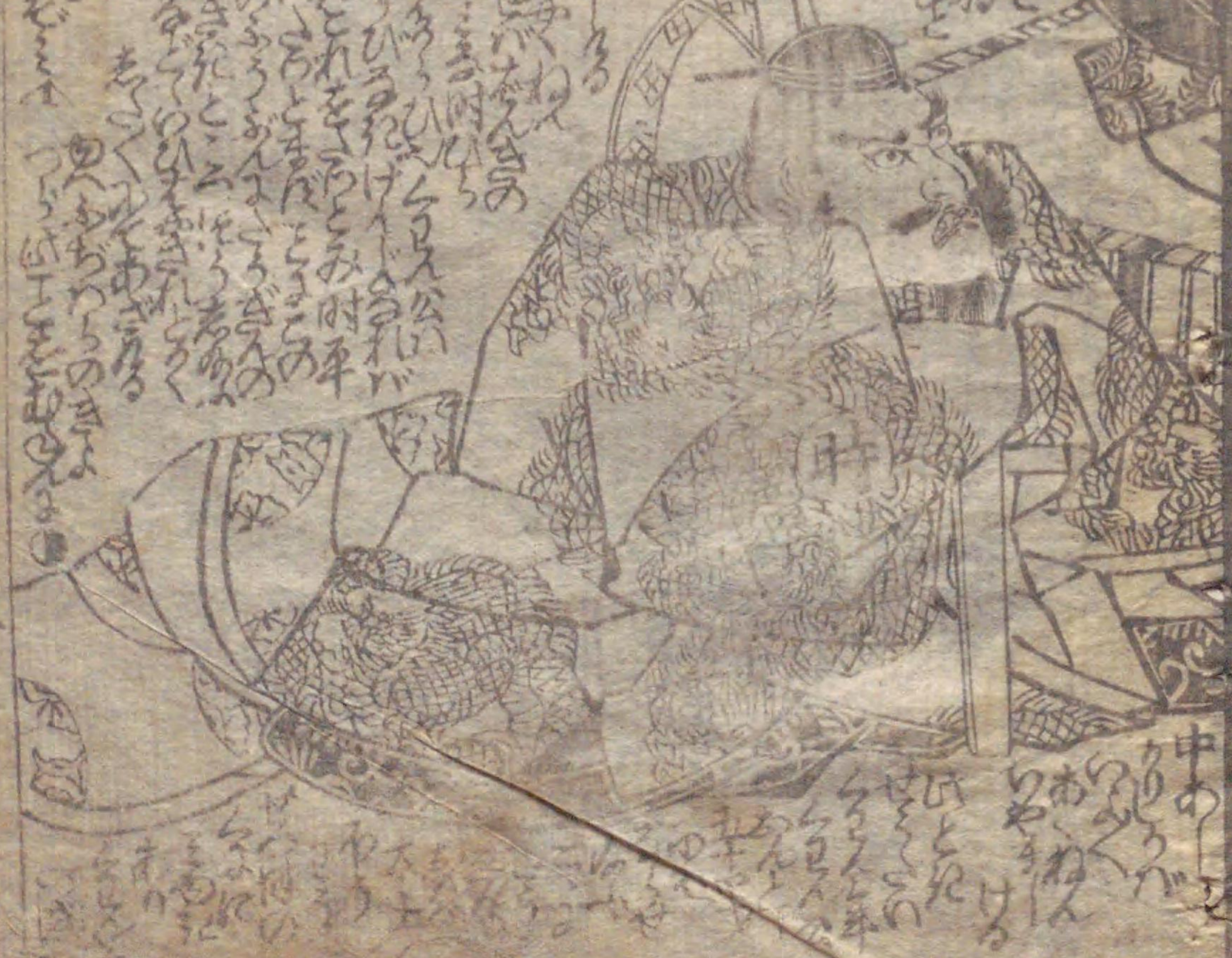
国立国会図書館 大益天神記 5巻 208-271

ガラス使用



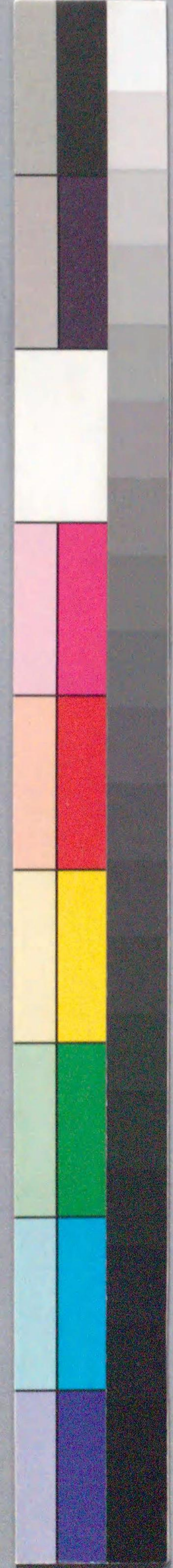


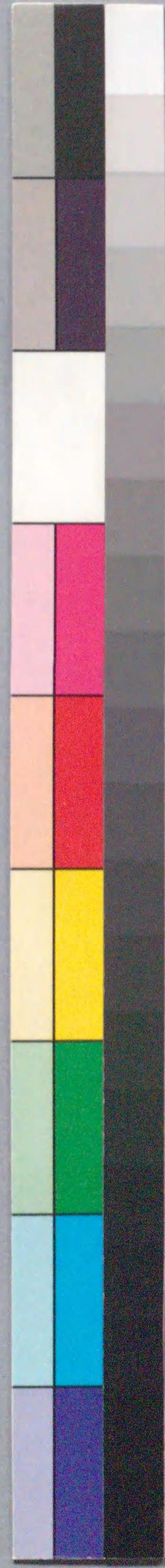
Handwritten text in vertical columns, likely a historical record or narrative. The text is densely packed and covers most of the page area.

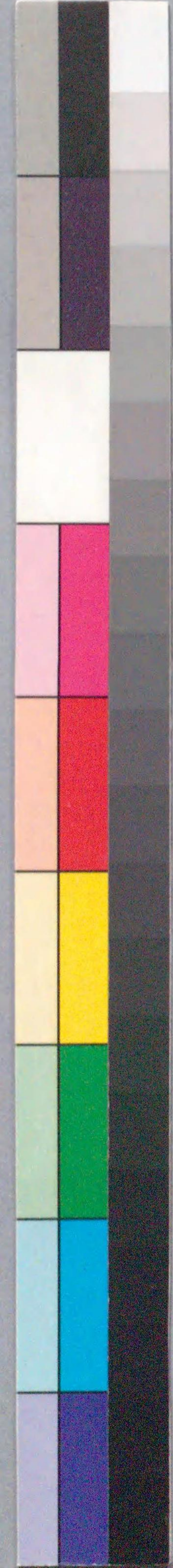
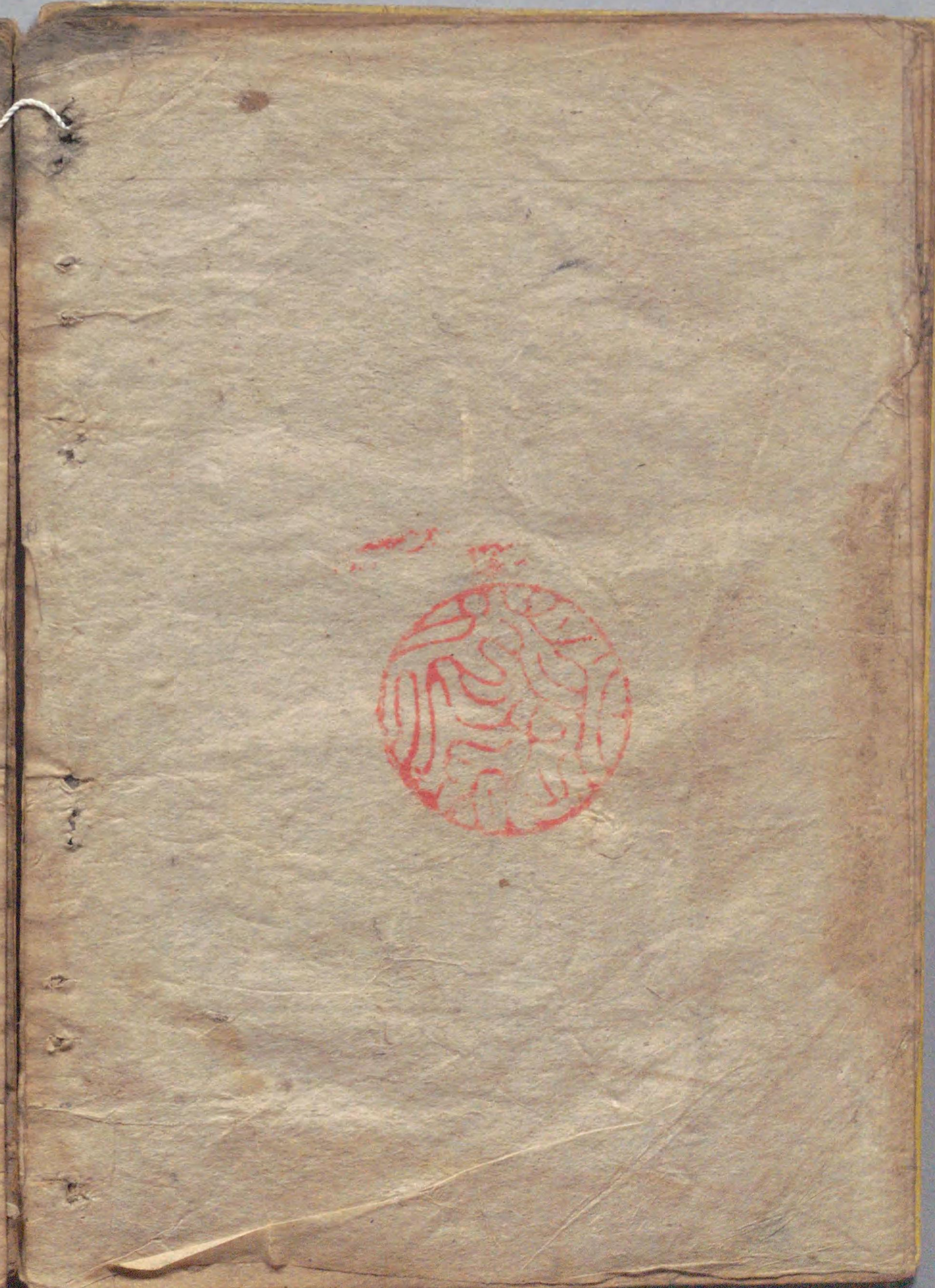


Handwritten text in vertical columns, continuing the narrative or record from the left page. The text is densely packed and covers most of the page area.















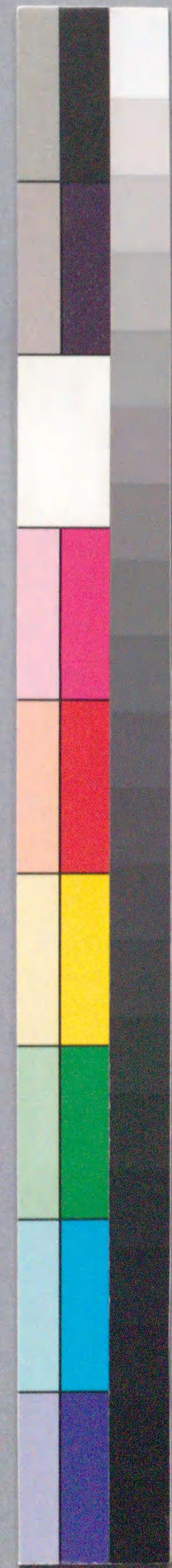
上ノ巻

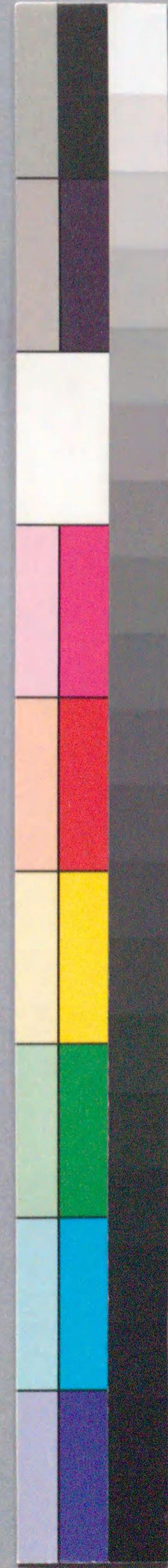
十四

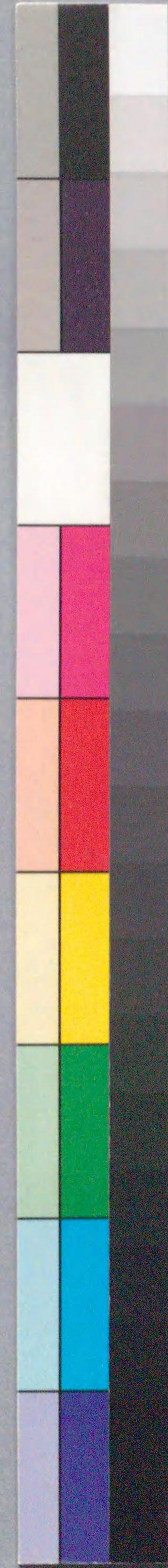


同之月



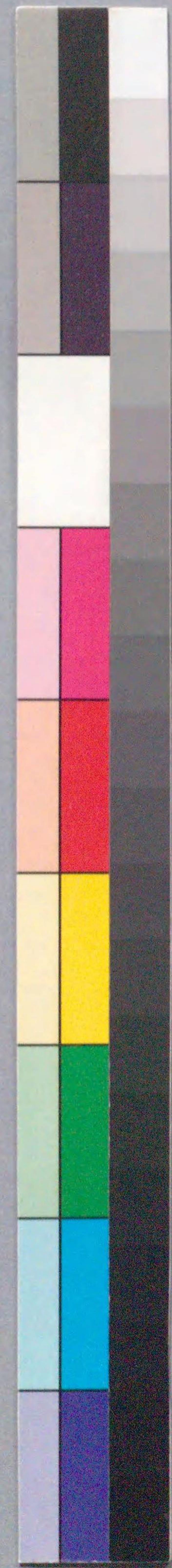
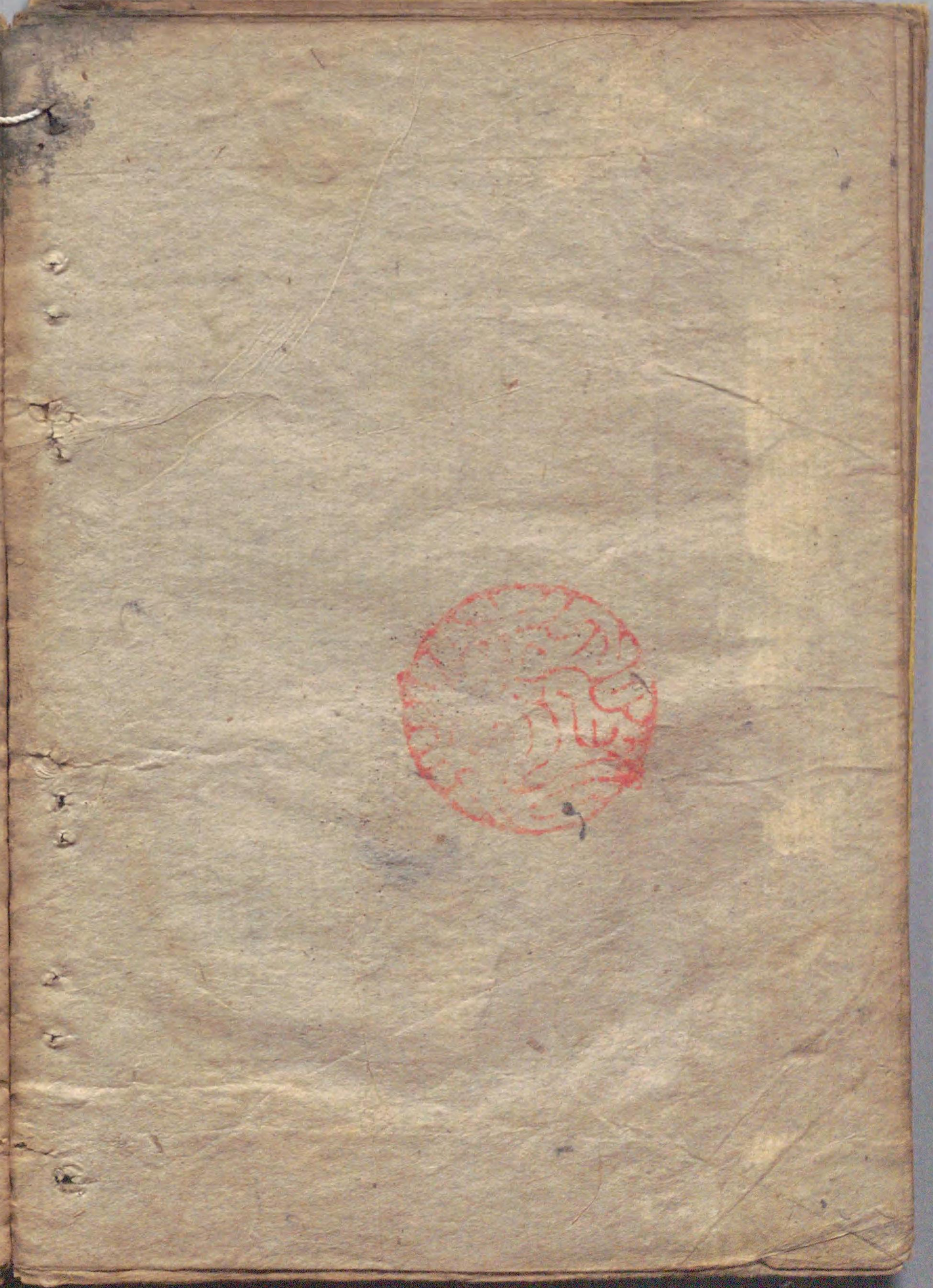






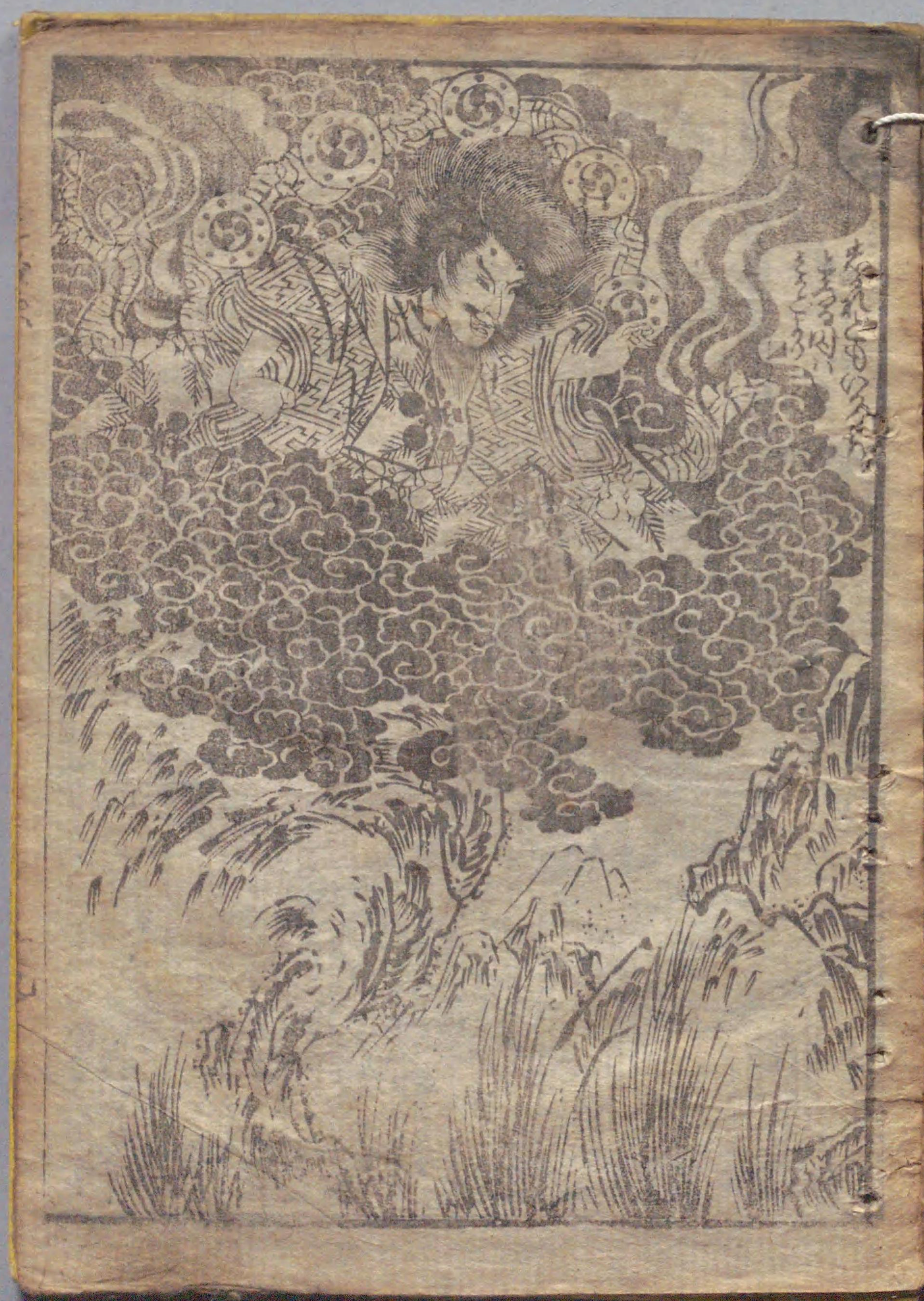
国立国会図書館 大益天神記 5巻 208-271

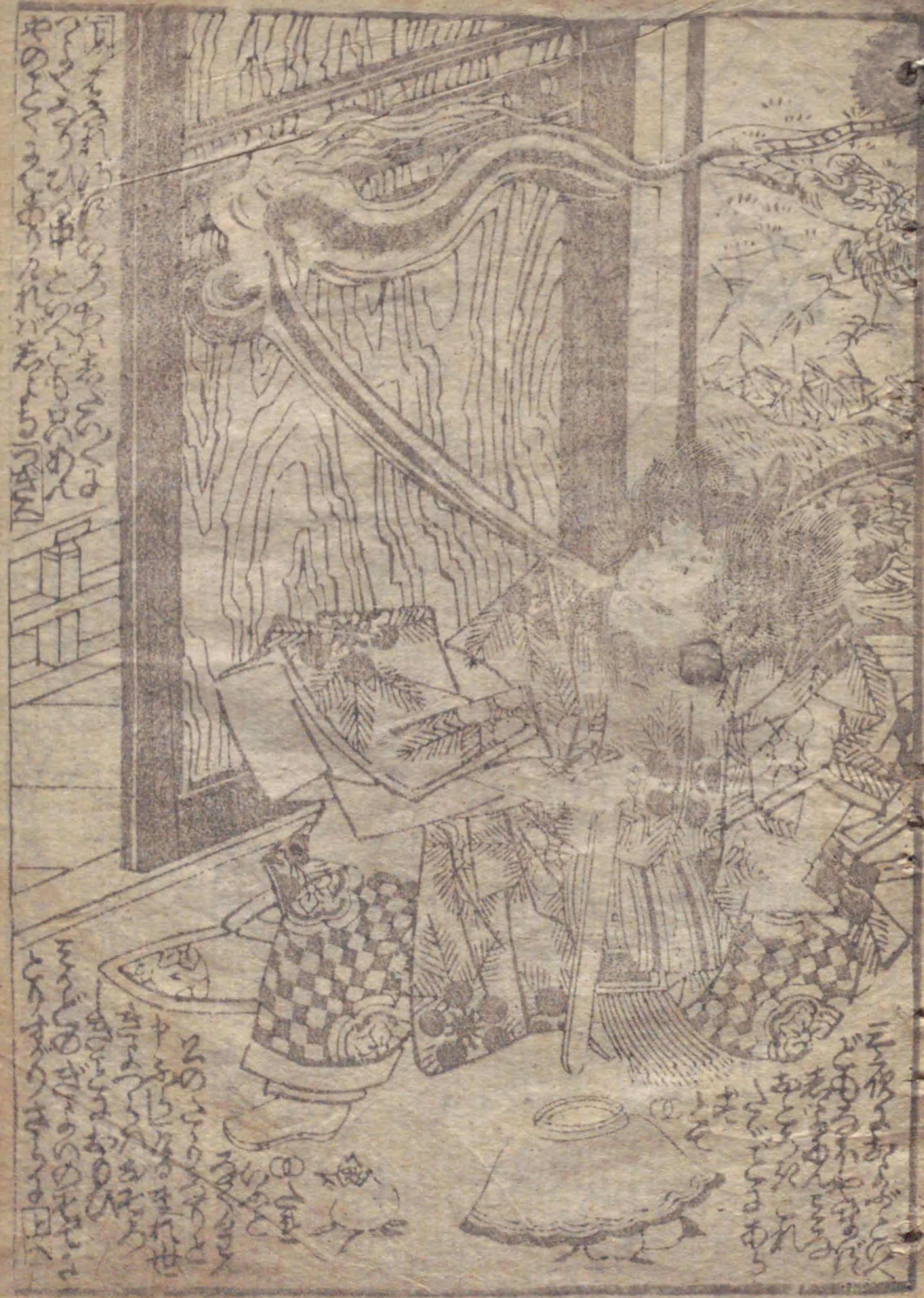
ガラス使用

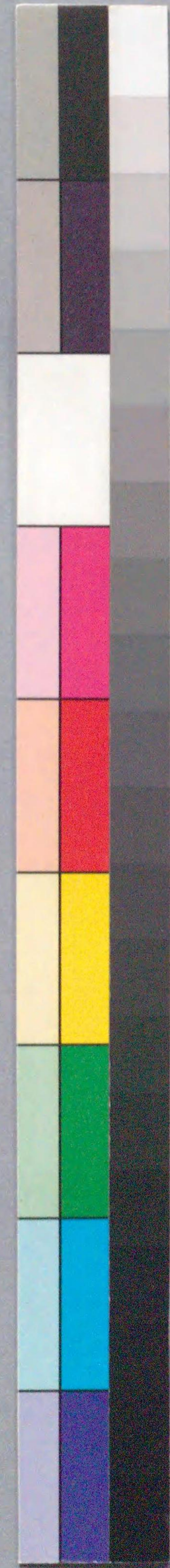


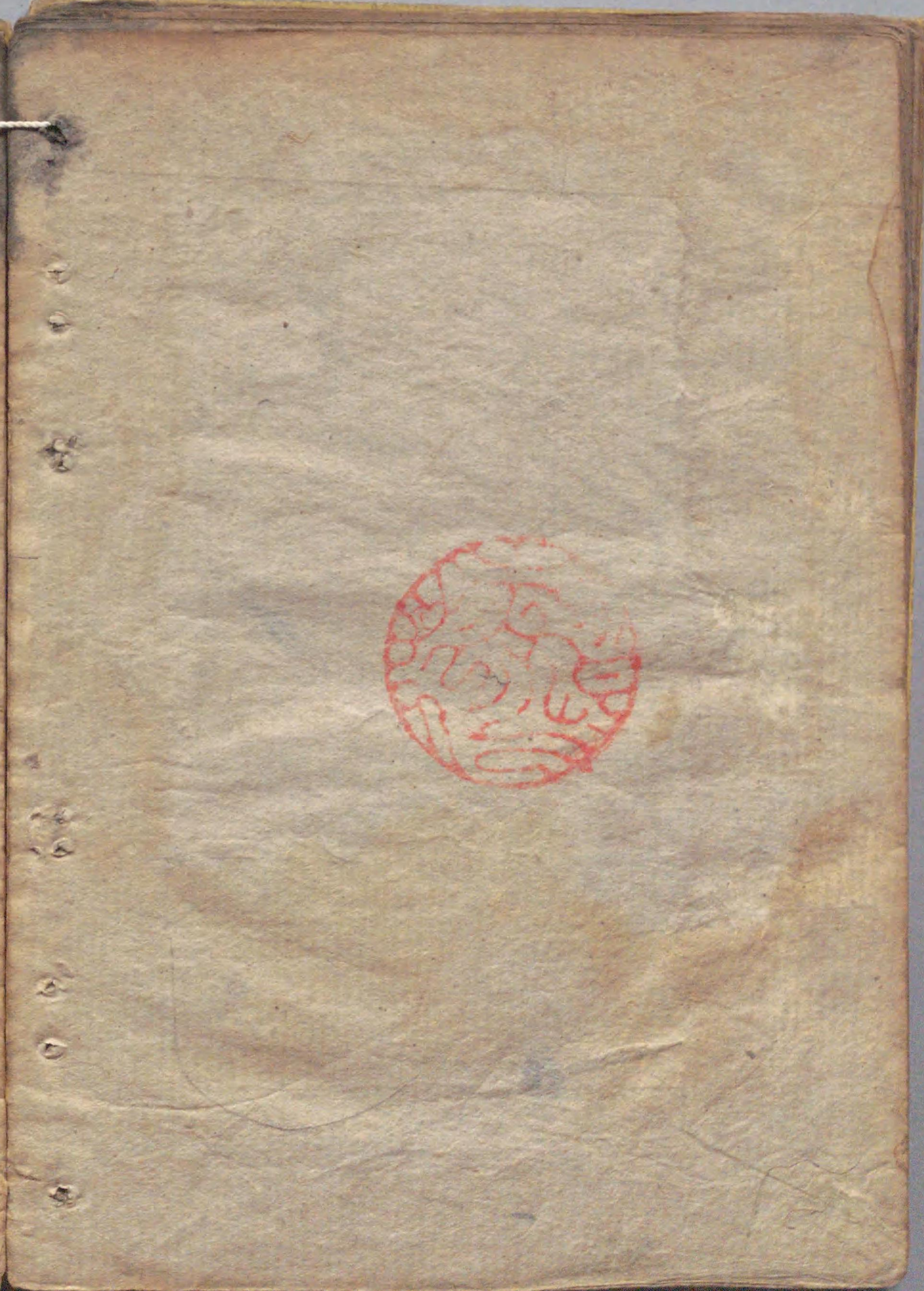
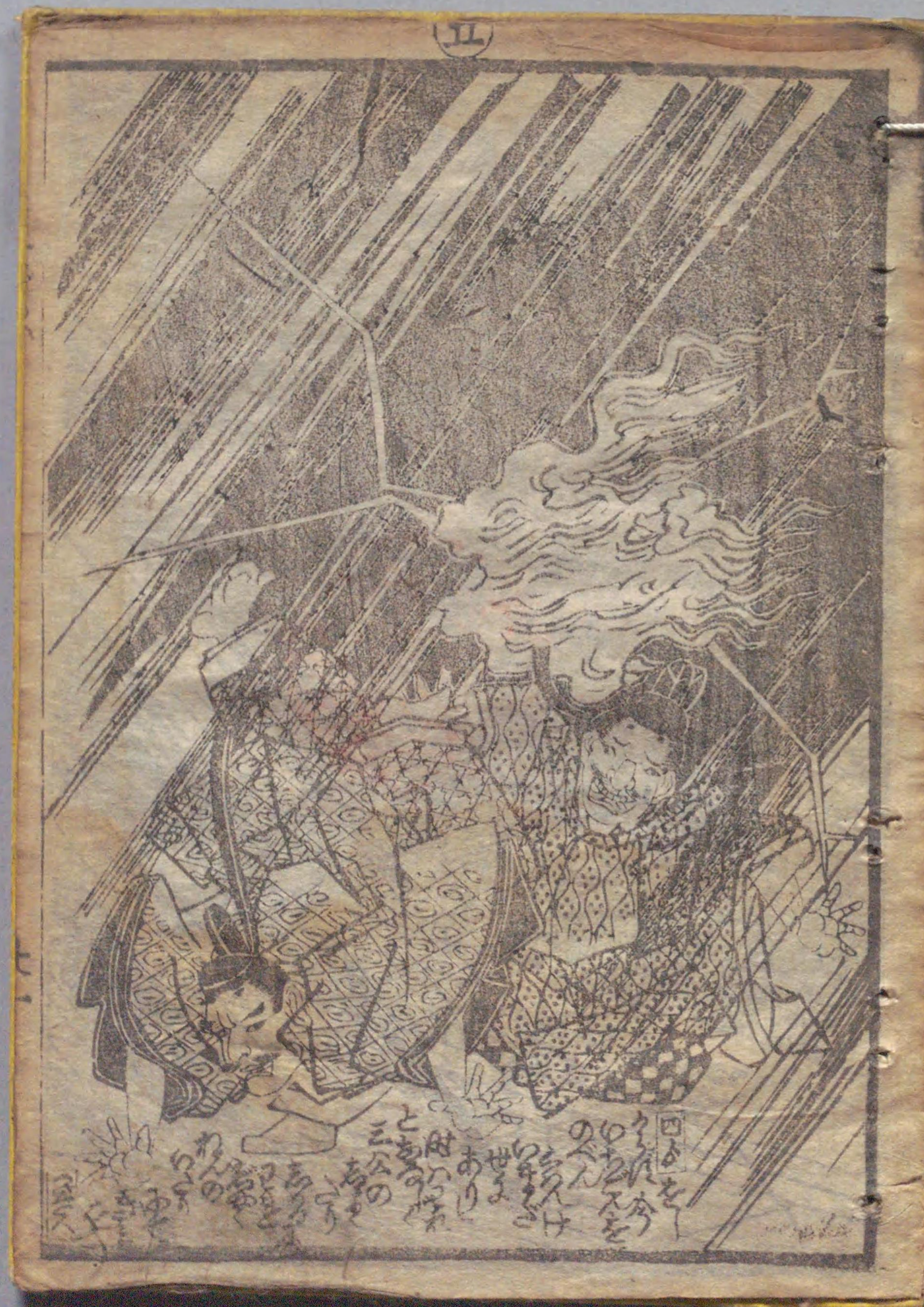




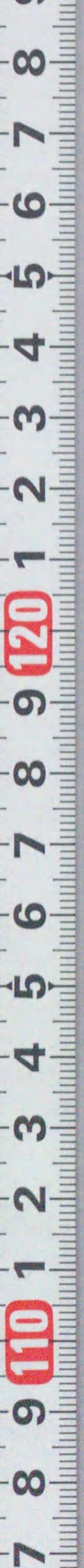
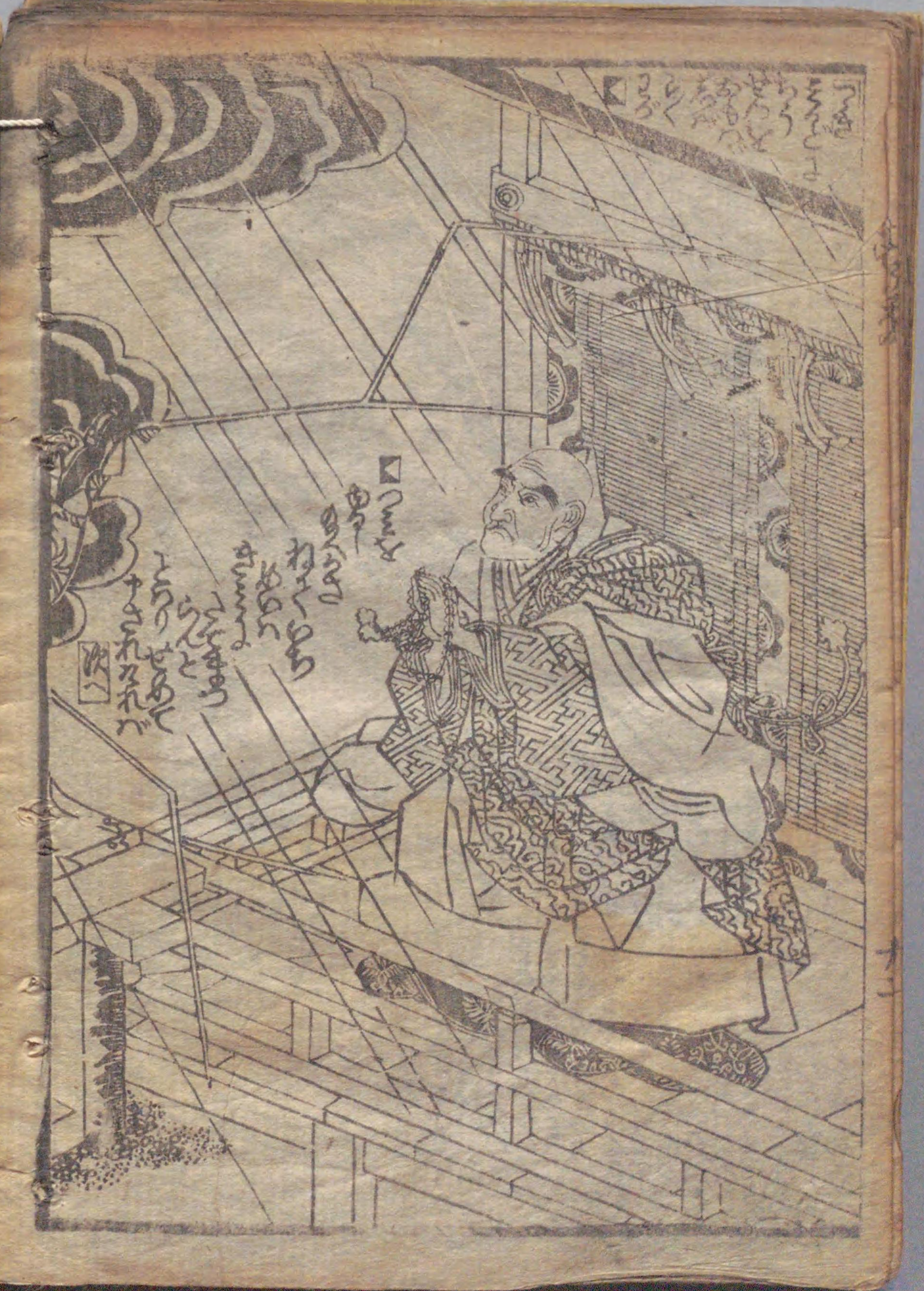


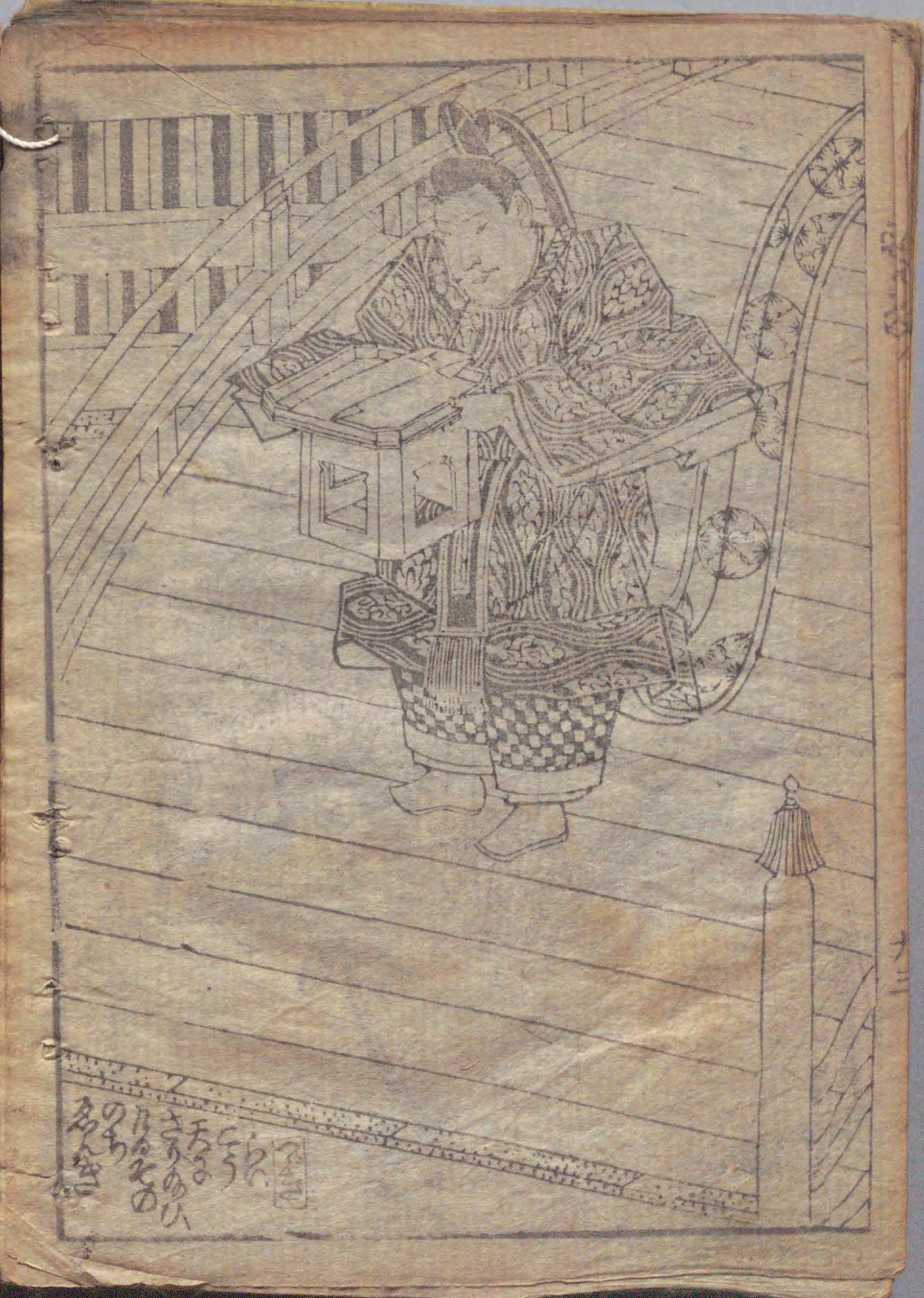










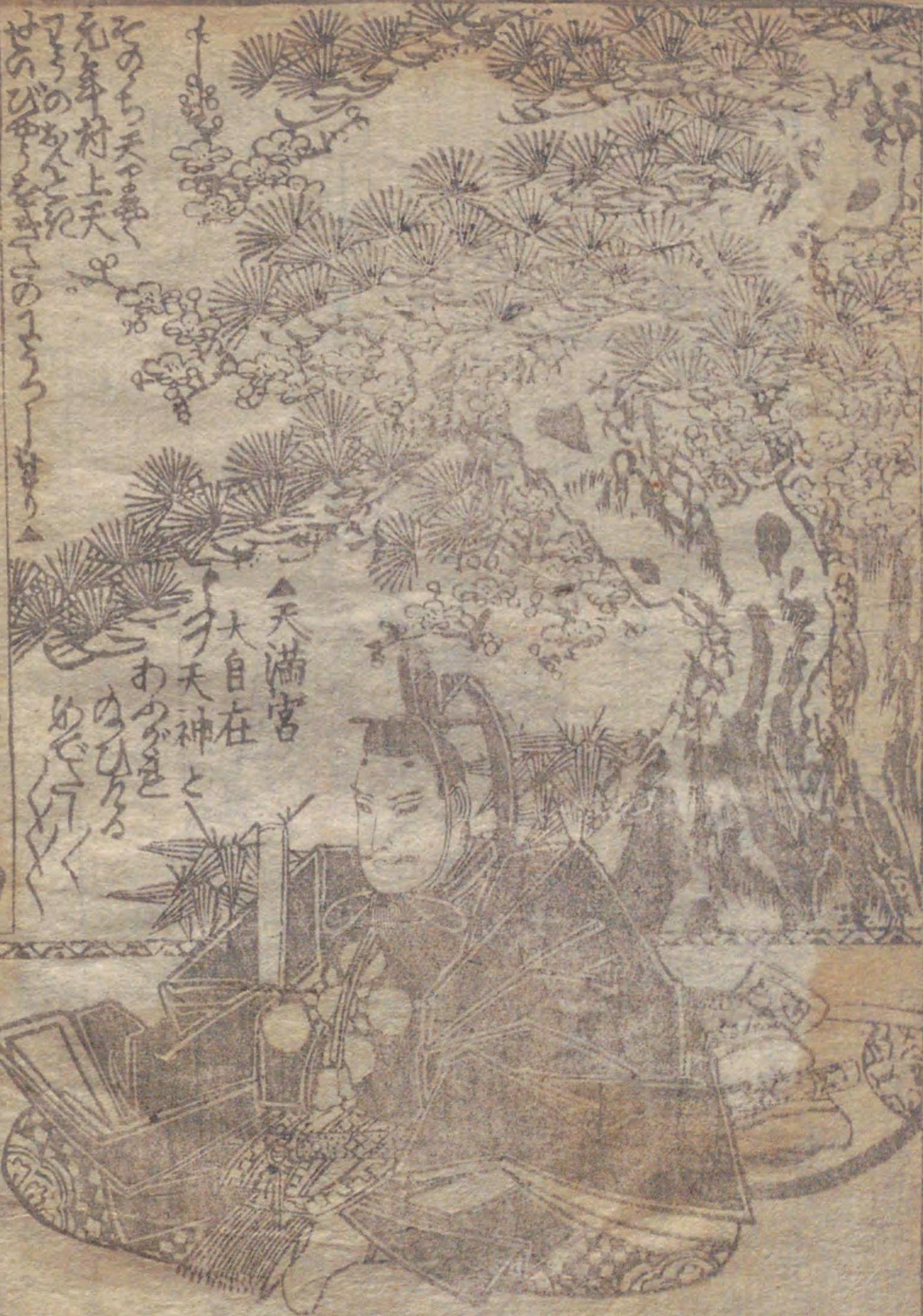




208
271



徳外撰國安画

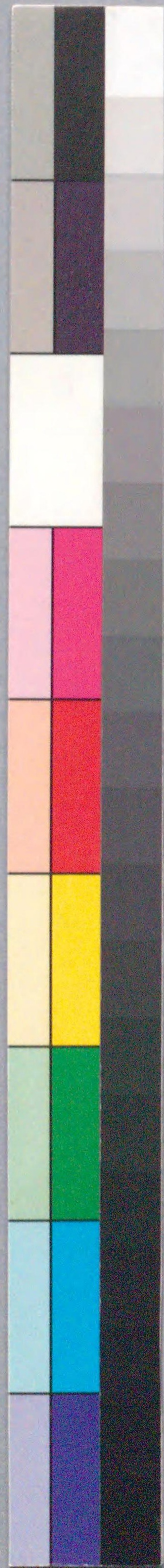


元年村上天

天満宮
大自在
天神と
わがまは
なひなる
ゆき行く



208
大益
271



国立国会図書館 大益天神記 5巻 208-271

ガラス使用