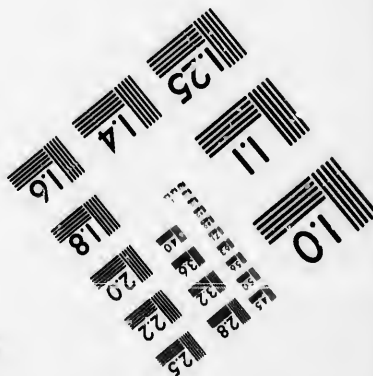
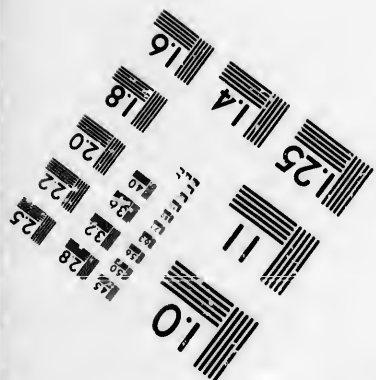
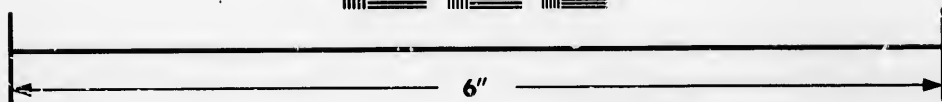
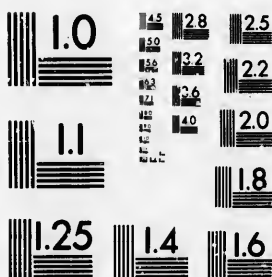


**IMAGE EVALUATION
TEST TARGET (MT-3)**



**Photographic
Sciences
Corporation**

23 WEST MAIN STREET
WEBSTER, N.Y. 14580
(716) 872-4503

1.5
1.8
2.0
2.2
2.5
2.8
3.2
3.6
4.0
4.5
5.0
5.6
6.3
7.1
8.0
9.0
10.0
11.2
12.5
14.0
16.0
18.0
20.0
22.5
25.0
28.0
31.5
36.0
40.0
45.0
50.0
56.0
63.0
71.0
80.0
90.0
100.0

**CIHM/ICMH
Microfiche
Series.**

**CIHM/ICMH
Collection de
microfiches.**



Canadian Institute for Historical Microreproductions / Institut canadien de microreproductions historiques

© 1985

1.5
1.8
2.0
2.2
2.5
2.8
3.2
3.6
4.0
4.5
5.0
5.6
6.3
7.1
8.0
9.0
10.0
11.2
12.5
14.0
16.0
18.0
20.0
22.5
25.0
28.0
31.5
36.0
40.0
45.0
50.0
56.0
63.0
71.0
80.0
90.0
100.0

The copy filmed here has been reproduced thanks to the generosity of:

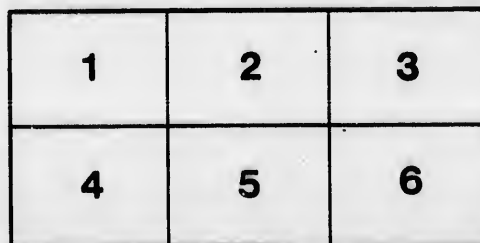
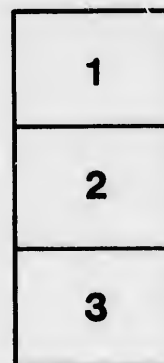
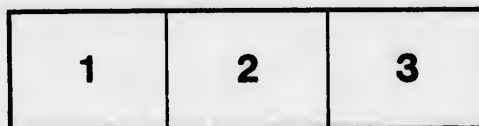
D. B. Weldon Library
University of Western Ontario
(Regional History Room)

The images appearing here are the best quality possible considering the condition and legibility of the original copy and in keeping with the filming contract specifications.

Original copies in printed paper covers are filmed beginning with the front cover and ending on the last page with a printed or illustrated impression, or the back cover when appropriate. All other original copies are filmed beginning on the first page with a printed or illustrated impression, and ending on the last page with a printed or illustrated impression.

The last recorded frame on each microfiche sheet contains the symbol \rightarrow (meaning "CONTINUED"), or the symbol ∇ (meaning "END"), whichever applies.

Maps, plates, charts, etc., may be filmed at different reduction ratios. Those too large to be entirely included in one exposure are filmed beginning in the upper left hand corner, left to right and top to bottom, as many frames as required. The following diagrams illustrate the method:



L'exemplaire filmé fut reproduit grâce à la générosité de:

D. B. Weldon Library
University of Western Ontario
(Regional History Room)

Les images suivantes ont été reproduites avec le plus grand soin, compte tenu de la condition et de la netteté de l'exemplaire filmé, et en conformité avec les conditions du contrat de filmage.

Les exemplaires originaux dont la couverture en papier est imprimée sont filmés en commençant par le premier plat et en terminant soit par la dernière page qui comporte une empreinte d'impression ou d'illustration, soit par le second plat, selon le cas. Tous les autres exemplaires originaux sont filmés en commençant par la première page qui comporte une empreinte d'impression ou d'illustration et en terminant par la dernière page qui comporte une telle empreinte.

Un des symboles suivants apparaîtra sur la dernière image de chaque microfiche, selon le cas: le symbole \rightarrow signifie "À SUIVRE", le symbole ∇ signifie "FIN".

Les cartes, planches, tableaux, etc., peuvent être filmés à des taux de réduction différents. Lorsque le document est trop grand pour être reproduit en un seul cliché, il est filmé à partir de l'angle supérieur gauche, de gauche à droite, et de haut en bas, en prenant le nombre d'images nécessaire. Les diagrammes suivants illustrent la méthode.

rrata
to

pelure,
n à

32X

SCHEDULE,

SHOWING the ASSESSED VALUATION OF REAL PROPERTY
in the Several Corporations in the County of Oxford, for 1862,
AS EQUALIZED by the Council, with the Amounts to be
raised by Assessment for County and School purposes :

1	2	3	4	5
CORPORATIONS.	Assesed Value of Real Property as Equalized.	Amount to be Raised for County Purposes	Municipal Assessment for Schools.	Government Grant for Schools.
BLENHHEIM.....	\$ 1,283,020	\$ cts. 1,427 50	\$ cts. 801 00	\$ cts. 801 00
BLANDFORD.....	535,104	\$ cts. 695 50	229 00	229 00
DEREHAM.....	1,334,900	1,485 00	629 00	629 00
NISSOURI (EAST).....	791,911	881 00	400 00	400 00
NORWICH (NORTH).....	771,740	858 50	394 00	394 00
NORWICH (SOUTH).....	575,360	640 25	337 00	337 00
OXFORD (EAST).....	680,040	756 75	314 00	314 00
OXFORD (WEST).....	548,460	610 25	313 00	313 00
OXFORD (NORTH).....	400,026	445 00	203 00	203 00
ZORRA (EAST).....	1,020,740	1,125 00	518 00	518 00
ZORRA (WEST).....	972,504	1,082 25	424 00	424 00
WOODSTOCK.....	568,760	632 50
INGERSOLL.....	362,350	403 25
EMBRO.....	63,740	71 25
Totals.....	9,908,655	11,014 00	4,562 00	4,562 00

NOTE.—The Clerks of the several Corporations will please take notice that the amounts mentioned in the 3rd and 4th columns are those to be raised in their several Corporations for County purposes, and for the support of Schools respectively; and LOCAL SUPERINTENDENTS will please take notice that those in the 4th and 5th columns are the amounts of the Municipal and Government Grants respectively.

