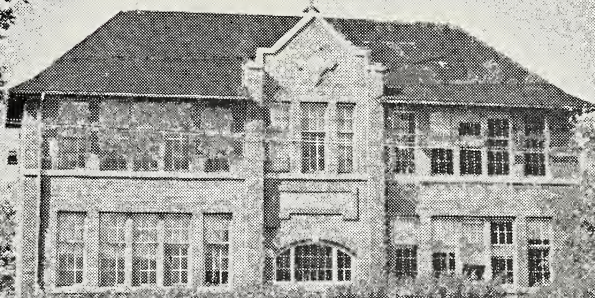


Survey of

ACME



Prepared By

INDUSTRIAL DEVELOPMENT BRANCH
DEPARTMENT OF INDUSTRY & DEVELOPMENT
Government of the Province of Alberta





Digitized by the Internet Archive
in 2015

<https://archive.org/details/surveyofacme00albe>

Village of Acme

April, 1961

1. LOCATION

Section 19-29-25-W4 in Census Division No. 5. This location is 50 miles northeast of Calgary on a branch line of the Canadian Pacific Railway and on Highway No. 21A.

2. ALTITUDE

2,969 feet Latitude - 51/30 Longitude - 113/30

3. TEMPERATURE

Average summer temperature - 56° F.

Average winter temperature - 23° F.

Average annual temperature - 37° F.

4. RAINFALL

Average yearly rainfall - 10.66 inches.

Average yearly snowfall - 56.3 inches.

Average annual precipitation - 15.68 inches.

Note: The foregoing figures regarding temperature and rainfall are estimated from data received from the nearest weather station.

5. GEOLOGY

The area is underlain by flat-lying Paskapoo sandstones and shales. There is a gentle dip to these rocks to the W-SW, where they deepen into the Alberta Syncline. The Paskapoo formation is Tertiary Age. It is underlain in turn by sandstones and shales of the Edmonton formation, which is Cretaceous in age.

The surficial materials are composed largely of sands, silts and clays which were deposited in extensive glacial lakes which once covered this region. Many of the gravel deposits of this area are formed of sands and gravels which were deposited as deltas in these ancient glacial lakes.

6. SOIL

Acme lies in the "Thin Black" soil zone.

Climate

Annual precipitation averages between 14 and 17 inches. The higher rainfall is in the southern part of the province where there is a correspondingly higher evaporation. Droughts occur only occasionally.

Vegetation

Grassland in which bluffs of trees are found in places where moisture conditions are more favorable.

Soil Profile

The normal profile has an A horizon that averages about 10 inches in depth and which in its upper 3 to 6 inches is black in color. The remainder is usually dark brown. The B horizon is usually brown to dark brown and the lime horizon (Bca) is found at depths of 24 to 30 inches below the surface. Generally the depth to the lime layer is considered as indicative of the efficiency of rain penetration.

Fertility

Soils in this zone are usually fairly well supplied with nitrogen and organic matter. In any zone exhaustive cropping depletes the soil's native food supply and fibre. A permanent system of cropping provides for the adequate replacement of depleted plant foods and the maintenance of organic matter.

Land Use

A greater number of soil types can be considered arable than in the brown zones. Wheat is the principal crop grown, but considerably more diversification is possible and should be practised to maintain soil fertility. The non-arable land is generally very good pasture.

7. HISTORY

In 1910 Acme was the end of the steel on a branch line of the Canadian Pacific Railway. It was the highest point on the line, and Acme meaning "the highest point" came into existence. Before 1910 the Post Office for the district was Tapscott, located northeast of the village. Acme was incorporated as a village July 7, 1910.

On September 9, 1910, the Methodist Church was officially opened and in the same year the Anglican Church was built. Education in the village at



A view of a portion of Acme's Main Street

first was on a private basis. Funds to operate the school were solicited from the people of the district and the first classes were held in the church hall with Mrs. J. Fisher Williams as first teacher.

In 1912 disaster struck the village when fire wiped out the main business section.

Names of early settlers were: G. Yellowless, J. Hotsenpillar, J. W. Sutherland, Mr. McCook, J. H. Brown, A. Peever, Fowler Bros., A. W. Klassen, J. S. Meek, A. Wheeler, J. C. Smith, W. L. Tolton.

The Acme Board of Trade was organized in July, 1944.

Sewer and water was installed in 1954. Natural gas was installed by Canadian Western Natural Gas Co. Ltd. in 1959.

8. LIVING CONDITIONS

Acme is the centre of a mixed farming community on a branch line of the Canadian Pacific Railway. Excellent school facilities provide for grades 1 to 12 with two churches supplying the spiritual needs of the community. Utilities consist of power, natural gas, water and sewer, with diesel and propane fuel available. Several clubs are available for evening entertainment and for the sportsman there is good hunting for pheasant, upland game and ducks.

9. ADMINISTRATION

The village is governed by a three member council, one member is elected each year for a three year term. Each year the councillors elect one of their members as mayor. The secretary-treasurer administers the village affairs in accordance with the policy set by the council.

The village hires one maintenance man for water, sewer, and garbage removal.

10. LAW ENFORCEMENT

One village constable.

Building Regulations - There is no building code. Plans for new buildings, alterations to buildings or removal of buildings must first be approved by council.

Electrical installations must comply to the Alberta Electrical Protection Act.

Sanitary installations must comply with the Provincial Health Regulations.

11. FIRE PROTECTION

The fire brigade consists of a fire chief and eight volunteer firemen.

Equipment - one 1950 hose tender, 1 portable pump, one 25 h.p. gas engine and pump, 1,000 feet 2½ inch hose, 300 feet 1½ hose, axes, crowbars, boots, coats, ladders, etc.

Water supply - Water is obtained from wells and pumped into a 56,000 gallon reservoir.

There are nine fire hydrants conveniently located throughout the village.

12. TAX STRUCTURE

1960 Net Assessment

Land, 100% of value	\$ 30,235
Improvements, 60% of 1958 value	312,555
Business	71,690
Power	10,600
Total Assessment	<u>\$425,080</u>

Mill Rate - Municipal 14, School 34, Hospital 5, Total 53 mills.

13. AREAS

Area of village - 160 acres.

Streets and lanes - 17.47.

Parks and playgrounds - 17.63.

Miles of roads, streets and lanes:

	Gravel	Improved Earth	Other	Total
Streets and roads	1.53		.24	1.77
Lanes and alleys		.83	.07	.90
			Total miles	<u>2.67</u>

There are approximately 2 miles of concrete sidewalk.

14. SEWER AND WATER MAIN MILEAGE

Storm sewers - nil.

Sanitary sewers - 2.01 miles.

Water mains - 1.48 miles.

15. POWER

Three phase 60 cycle power is supplied under a franchise by Calgary Power Limited.

Domestic Rates

Minimum charge for first 20 KWH or less used per month - 2.70 gross, discount 30c. \$2.40 net.

All additional KWH used per month - 1.5c per KWH.

Discount as shown applies on any bill paid within 10 days of date rendered.

Connection charge - \$1.00.

Reconnection charge - twice the net minimum charge.

Commercial Rate

Available for lighting and general service in commercial establishments.
Service charge—first $\frac{1}{2}$ KW of connected load - 50c.

Each additional $\frac{1}{2}$ KW of connected load - 20c.

Energy charge—First 50 KWH used per month - 10c per KW.

Next 150 KWH used per month - 5c per KW.

Excess KWH used per month - $2\frac{1}{2}$ c per KW.

Minimum charge - \$1.80 gross, \$1.50 net per month.

Discount - 10%, 10 days based on even dollars of total monthly bill, with a minimum discount of 30c per month.

Consumer's deposit - twice the gross monthly minimum charge.

Reconnection charge - twice the net monthly minimum charge.

Power Rate

Available for motors and commercial heating apparatus used in commercial establishments.

Service charge—per KVA of installation (monthly charge) - \$1.00.

(one motor horsepower or one kilowatt in heating apparatus considered equal to one kilovolt ampere - KVA).

Energy charge - First 50 KWH per month per KVA of installation - 5c per KWH.

Next 50 KWH per month per KVA of installation - $3\frac{1}{2}$ c per KWH.

All over 100 KWH per month per KVA of installation - 1c per KWH.



Acme residences are well cared for and comfortable

Discount - 10%, 10 days based on the dollars of total bill with a minimum discount of 30c per month.

Minimum charge - \$3.30 gross, \$3.00 net, or the amount of the service charge, whichever is greater.

Consumer's deposit - \$2.00 per KVA of installation and not less than \$6.00, or at the company's option, twice the estimated bill.

Reconnection charge - \$6.00.

16. WATER

Water is obtained from two wells and is pumped into a 56,000 gallon reservoir and then into the water mains.

Rates

First 6,000 gallons used in 2 months - \$5.50.

Next 10,000 gallons used in 2 months - 10c per hundred gallons.

All over 16,000 gallons used in 2 months - 7½c per hundred gallons.

Plus sewerage charge of \$3.00.

Water Analysis	Parts per Million	
	1st Well	2nd Well
Total Solids	566	1,622
Ignition Loss	122	124
Hardness	190	335
Sulphates	123	617
Chlorides	nil	nil
Alkalinity	320	540
Nature of Alkalinity — Bicarbonate of Lime, Magnesium and Soda		
Nitrites	trace	nil
Nitrates	.24	nil
Iron	1.5	4.5
Fluorine	0.2	nil

Remarks: Chemically suitable when iron content is settled out.

17. GAS

Natural gas is supplied to the village under a franchise by Canadian Western Natural Gas Co. Ltd.

Rate No. 1

Available to all customers.

First 2 MCF or less used per month - \$2.50.

All additional MCF used per month - 75c per MCF.

Minimum monthly charge - \$2.50.

When accounts are not paid on or before the due date, the charge per MCF other than the first 2 MCF shall be increased by four cents and the gross rate so arrived at shall apply.

Rate No. 2 - Optional Rate

Available to all customers whose annual consumption is more than 552 MCF.

Fixed charge - \$12.50 per month.

Plus commodity charge -\$2.50 per month.

Minimum monthly charge - \$12.50.

This rate is available only on annual contract which shall continue from year to year thereafter until either party shall give to the other party, at least thirty days prior to the expiration of any such year, a written notice of desire to terminate same, whereupon at the expiration of such year it shall cease and determine. When accounts are not paid on or before the due date, the charge per MCF shall be increased by three cents and the gross rate so arrived at shall apply.

18. L.P. GAS

Heat value - 2,521 b.t.u. per cu. ft. at 60° F.

100 lb. cylinders - \$6.50.

Bulk - 17c per gallon.

There is no storage tank in the village.

19. DIESEL FUEL

Heat value - 135,000 to 140,000 b.t.u. per gallon at 60° F.

Winter grade - 18.7c per gallon.

Summer grade - 17.6c per gallon.

Storage capacity - 6,000 gallons.

20. COAL

Coal is secured from Drumheller. Very little used in the village.

Price per ton delivered: Lump - \$15.00, Egg - \$12.50, Stoker - \$9.00.

21. RESOURCES

Wheat and coarse grains, honey, horses, cattle, sheep and hogs, dairy products, poultry products, straw, sand - common, gravel.

22. GOVERNMENT OFFICES AND SERVICES

Federal - Post Office.

Provincial - Alberta Government Telephones, Liquor Vendor.

Municipal - Town Hall housing Council Chambers, Fire Hall, Police Department, Secretary-Treasurer.

23. HEALTH SERVICES

There is no hospital in the village, the nearest being at Three Hills, 25 miles north. The Drumheller Health Unit calls monthly.

Other Health Facilities: 1 doctor, 3 veterinarians, 1 drug store.

24. PROFESSIONAL AND SKILLED PERSONAL SERVICES

(excluding health services)

Accountants - 4 visiting monthly.

Barbers - 1.

25. TRANSPORTATION

Canadian Pacific Railway Branch Line.

Sorenson Bus Lines - Castor to Calgary via Acme (daily).

Local truck service to Calgary.

26. NEWSPAPERS

Acme Sentinel - weekly.

27. COMMUNICATION

Alberta Government Telephones, Canadian Pacific Telegraphs, Post Office,
Nearest Radio Station - Drumheller CJDV, Nearest TV Station - Calgary CFCN,
CHCT.

28. FINANCIAL FACILITIES

Bank of Montreal, Acme Saving and Credit Union.

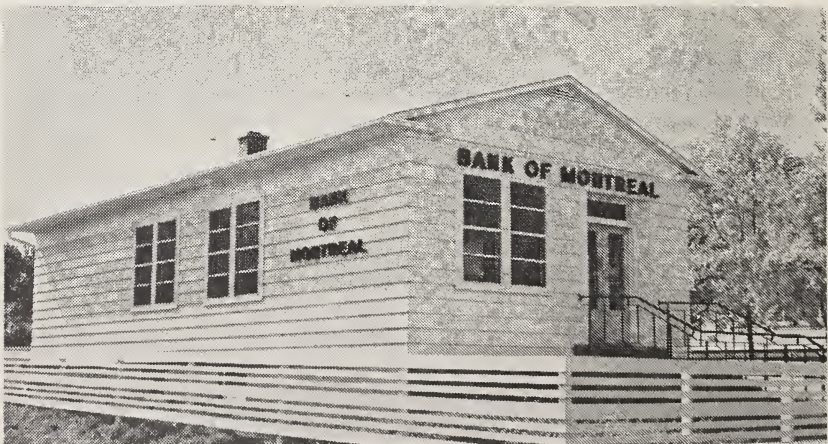
29. HOTELS

	No. of Rooms	Single Rate	Beer License
Alberta	10	\$1.50	yes

30. TOURIST CAMPS

Trailer Park operated by the village.

Government picnic grounds (camp kitchens).



This bank is but one of many attractive places of business in Acme

31. CHURCHES

Anglican, United.

32. FRATERNAL ORGANIZATIONS

Masons, Eastern Star, Rebekah, Royal Purple, Elks.

33. SERVICE CLUBS

Chamber of Commerce, Legion.

34. SOCIETIES AND ASSOCIATIONS

Agricultural Society, Cancer Society, Home and School Association, Light Horse Association, Red Cross Society, Rifle Club, Women's Missionary Society, Women's Auxiliary.

35. EDUCATION

The village schools are a unit of the Three Hills School Division No. 60. Grades 1 to 12 are taught along with the following optional subjects: Typing, Art, Drama, and Bookkeeping. The school population is made up as follows:

	Grade	No. of Teachers	No. of Pupils
Elementary	1 - 6	5	136
Junior High	7 - 9	2	55
High	10 - 12	3	55

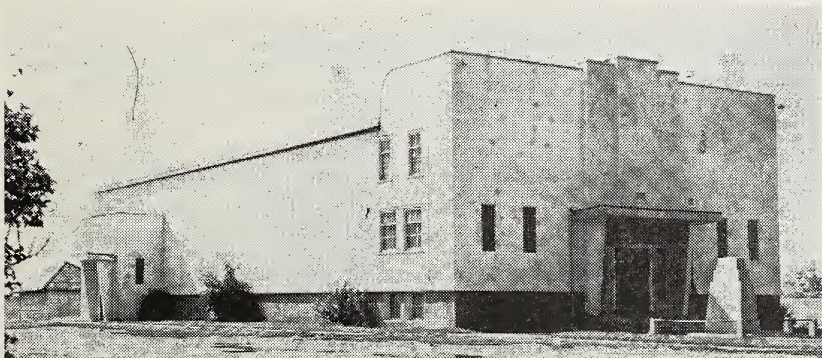
36. THEATRES AND HALLS

	Capacity	Stage	Piano
Community Hall	500	yes	yes
Masonic Hall	150	no	yes

37. CULTURAL ACTIVITIES

The school library is open to the public.

Other activities - 1 music teacher, drama at school.



The Acme Community Hall is a well built, popular structure

38. YOUTH ACTIVITIES

Boys - Scouts, Cubs, Junior Calf Club, 4H Club.

Girls - C.G.I.T., A.Y.P.A., 4H Club.

39. SPORTS

Baseball, senior and junior; softball, basketball, hockey, curling, hunting.

Facilities - Covered curling rink, three sheets natural ice.

Open air skating and hockey rink.

Baseball diamonds, senior and junior.

School grounds for playgrounds.

Playgrounds in park.

40. FAIRS

Sports Day.

Horticultural Show.

41. HISTORIC SITES

Nil.

42. CO-OPERATIVES

Alberta Wheat Pool, United Grain Growers, Acme Saving and Credit Union.

43. INDUSTRY AND BUSINESS

Type of Business or Industry	No. of Establishments	Producer or Manufacturer	Wholesale	Retail	Type of Business or Industry	No. of Establishments	Producer or Manufacturer	Wholesale	Retail
Abattoir	1	1	1	—	Service Stations	3	—	—	3
Accountant	4	calling	—	—	General Stores	1	—	—	1
Auctioneers	2	—	—	—	Grain Elevators	5	total cap.	—	—
Auction Market	1	—	—	—		320,000 bus.	—	—	—
Banks	1	—	—	—	Groceries	1	—	—	1
Barbers	1	—	—	—	Hardware	2	—	—	2
Building Contractors	2	—	—	—	Hotels	1	—	—	—
Blacksmith	1	1	—	1	Implements - Farm	2	—	—	2
Butchers	2	—	—	2	Insurance & Real Estate	2	—	—	—
Cartage Delivery	1	—	—	—	Lumber Yards	1	—	1	1
Clothing - Women's & Children's	1	—	—	1	Oil Distributors	3	—	3	—
Cold Storage Lockers	1	—	—	1	Pool Room	1	—	—	—
Credit Unions	1	—	—	—	Printers	1	1	1	1
Creamery	1	1	1	1	Radio Repairs	1	—	—	—
Doctors	1	—	—	—	Restaurants	2	—	—	—
Drug Stores	1	—	—	1	Tinsmith & Plumbers	1	—	—	—
Electrical Appliances	2	—	—	2	Turkey Ranch	1	—	—	—
Electrical Contractor	1	—	—	—	Veterinary	3	—	—	—
Garages &					Welding & Machine Shop	1	1	—	1

44. SITES

Residential and industrial sites adjacent to trackage and highway are available from the village at a reasonable price.

45. INDUSTRIAL DEVELOPMENT

The Acme Specific Pathogen Free Pig Laboratory is operated by K. E. Greenway as Manager and Dr. J. A. Greenway as a Director. This laboratory was established for the procurement of specific Pathogen free pigs. This laboratory is the only one in western Canada; however, the original one was established in the United States where it proved satisfactory.

The sow is sacrificed and the piglets removed and placed in a laboratory and raised for four weeks under complete sterile conditions. The meat of the sow is sold and dressed and can be used for human consumption. The laboratory is curing infectious Athropic Rhinitis Virus Pneumonia, all virus or bacterial diseases transmitted from mother to offspring, Ectoparasite elimination (mange lice, etc.) and Endoparasite elimination (worms). The saving to the farmers through this method are 100 lbs. of pork produced on 100 lbs. less feed, antibiotic feed additives not needed to control pathogens as we now find them and higher grades will result as the owner will probably put his best sows through the laboratory, therefore an overall picture of higher grades. Before the laboratory admits any pig the owner has to contact his local veterinary and he agrees to be his consultant on S.P.F. pigs after the pigs have been returned home. In this way the future population of pigs would be germ free.

Wheat is an important crop, especially toward the east; however, the production of beef cattle and fluid milk for the Calgary market are the source of a good proportion of farm cash income. Farms are large, average about 500 acres and about two-thirds are operator owned. In that part of the district devoted to grain production, wheat is an important crop and a wheat-fallow or wheat-wheat-fallow rotation is general. Toward the north and west the area devoted to improved pasture and tame hay is relatively high. One of the largest turkey farms in western Canada is located 1½ miles west of the village. W. A. Greenway also operates a farm on the edge of the village where he raises grand champion Tamworth swine, Percheron horses and Guernsey cattle.

46. TRADING AREA

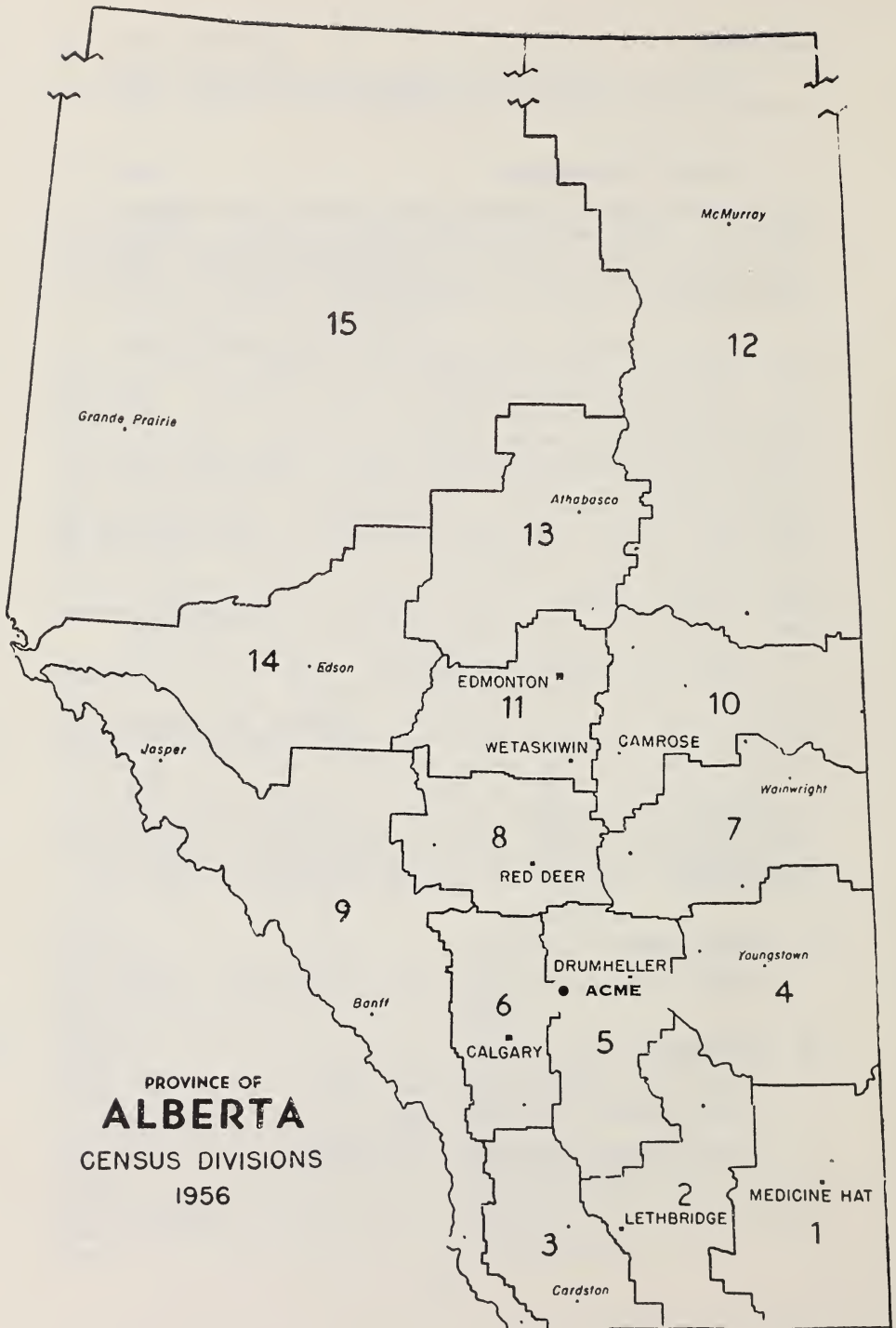
North - 8 miles; South - 4 miles; West - 13 miles; East - 11 miles.

47. POPULATION

Trading area population, 1956 census - 2,102.

Village population, 1956 census - 292.

Village population, March, 1961 - 315 estimate.



PROVINCE OF
ALBERTA
 CENSUS DIVISIONS
 1956

National Library of Canada
Bibliothèque nationale du Canada



3 3286 51615 4917

