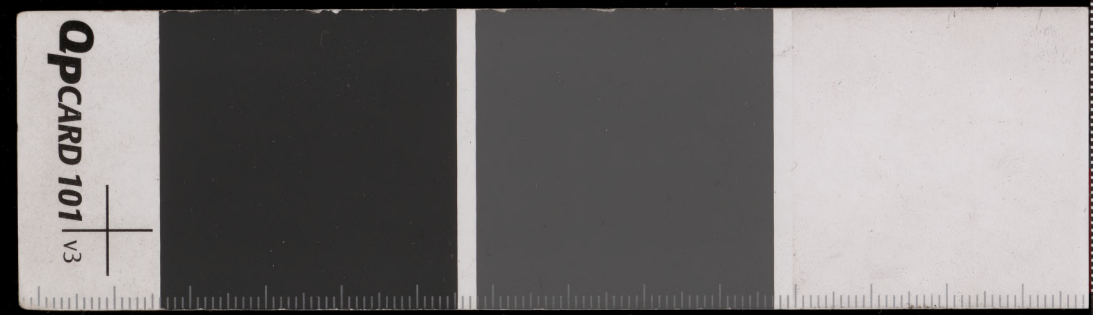


Handwritten text on a palm leaf manuscript strip, likely in an Indic script. The text is arranged in approximately 10 horizontal lines. Two circular holes are visible, used for threading a cord to bind multiple leaves together. The leaf is aged and shows some wear and discoloration.



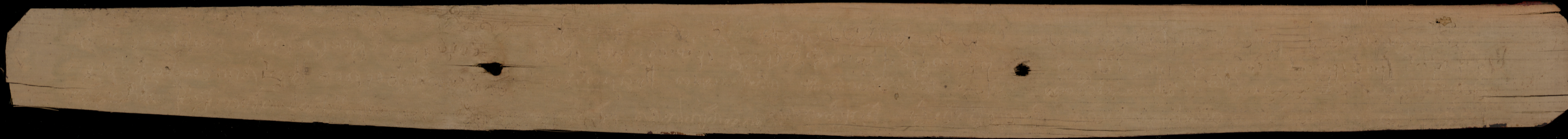
Handwritten text on a long, narrow strip of aged paper, possibly a manuscript fragment. The text is written in a cursive script and is mostly illegible due to fading and damage. There are two distinct holes punched through the strip, one near the left end and one near the right end. The paper is heavily stained and shows signs of significant wear and tear.

Handwritten text in a cursive script, likely a historical document or manuscript. The text is written on aged, yellowish paper with two distinct holes. The script is dense and fills most of the page.

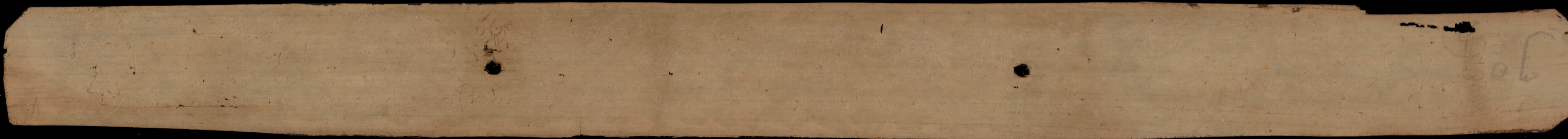
Handwritten text at the top left of the page, possibly a header or a specific section title.

Handwritten text at the top right of the page, possibly a date or a signature.

Handwritten text at the bottom left of the page, possibly a signature or a closing.



Handwritten text on a long, narrow strip of aged paper, likely a manuscript or document fragment. The text is written in a cursive script and is mostly illegible due to fading and the angle of the strip. There are two distinct circular holes punched through the paper, suggesting it was part of a bound volume. The paper shows signs of wear, including discoloration and a small tear near the right edge.





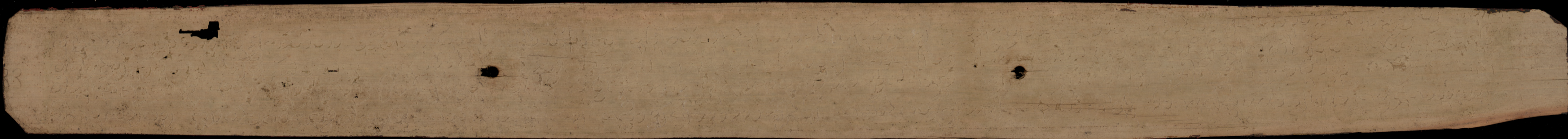






Handwritten text on a long, narrow strip of aged paper, possibly a manuscript or a list. The text is written in a cursive script and is mostly illegible due to fading and the angle of the strip. There are three distinct holes punched along the length of the strip, suggesting it was part of a bound volume or a scroll. The paper is yellowed and shows signs of wear and tear, particularly at the right end.

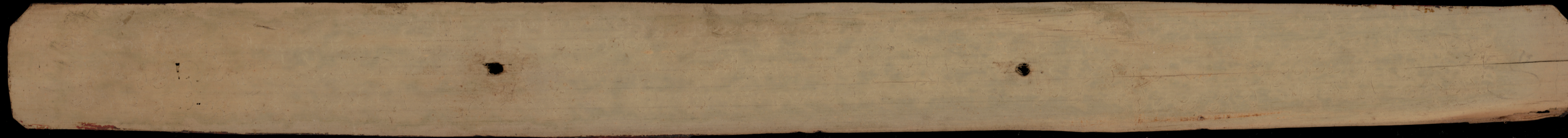
Handwritten text on a long, narrow strip of aged paper, possibly a manuscript or a list. The text is written in a cursive script and is mostly illegible due to fading and damage. There are three distinct holes punched along the length of the strip, suggesting it was part of a bound volume or a chain of pages. The paper is yellowed and shows signs of wear, including some staining and fraying at the edges.



Handwritten text on a long, narrow strip of aged paper, possibly a manuscript or a page from a book. The text is written in a cursive script and is mostly illegible due to fading and damage. There are several dark spots and holes, likely from insect damage or water damage, scattered across the strip. The paper is yellowed and shows signs of significant wear and tear.



Faint, illegible handwriting, possibly a signature or initials, located in the center of the paper.

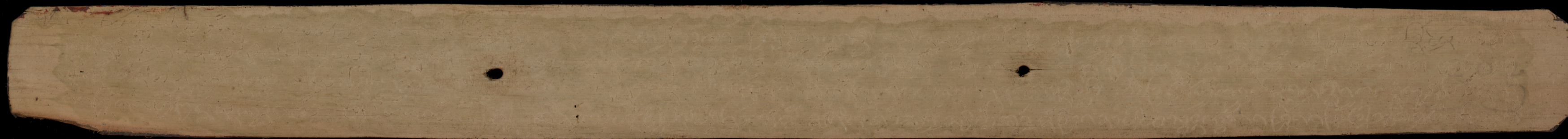


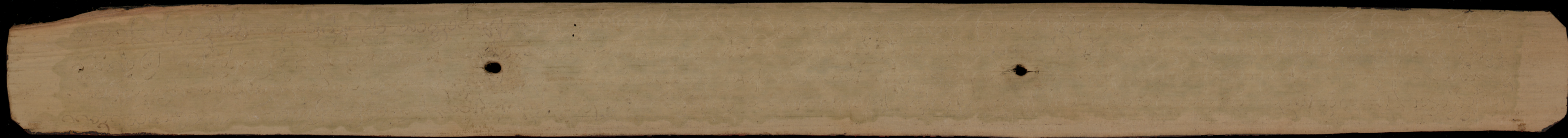




Handwritten text in a script, possibly Indic, on a long, narrow strip of aged paper. The text is arranged in approximately four horizontal lines. The paper shows signs of wear, including two circular holes and a small tear. The script is finely inscribed and appears to be a form of historical or religious text.







Handwritten text in an ancient script, likely Burmese, inscribed on a palm leaf. The text is arranged in approximately 10 horizontal lines across the length of the leaf. The script is finely etched into the surface of the dried leaf. The leaf shows signs of age, including some discoloration and a small dark hole near the center. The text appears to be a continuous passage, possibly a religious or historical record.

Handwritten text in a cursive script, likely Burmese, on a palm leaf manuscript. The text is arranged in approximately 10 horizontal lines across the length of the leaf. The script is dense and difficult to decipher without specialized knowledge. There are two distinct circular holes punched through the leaf, one near the left edge and one near the right edge, which were traditionally used for threading a cord to bind multiple leaves together into a book format. The leaf shows signs of age, including some staining and wear at the edges.

Handwritten text in a cursive script on a palm leaf manuscript. The text is arranged in approximately 10 horizontal lines across the length of the leaf. The script is dense and appears to be a form of South Indian or Southeast Asian script, possibly Grantha or Tamil. The leaf shows signs of age, including two distinct circular holes and some fraying at the edges.

Handwritten Burmese script on a palm leaf manuscript. The text is arranged in approximately four horizontal lines. The script is a traditional form of Burmese, likely used for religious or historical records. The leaf shows signs of age, including two circular holes and some surface wear.

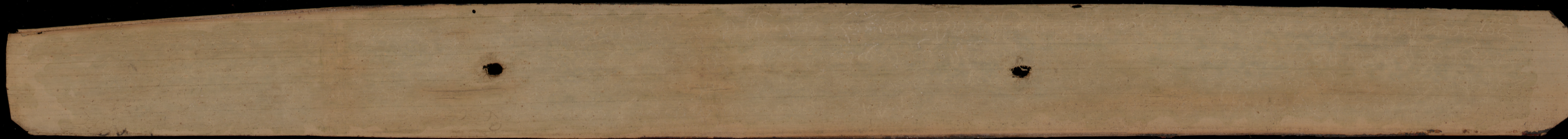




Handwritten text on a long, narrow strip of aged paper, possibly a manuscript or a list. The text is written in a cursive script and is mostly illegible due to fading and the narrowness of the strip. There are two distinct holes or indentations along the length of the strip, suggesting it was once part of a bound volume or a chain of pages. The paper is heavily stained and discolored, particularly around the edges and the holes.

















ဟေ့ ဟေ့ ဟေ့ ဟေ့ ဟေ့ ဟေ့ ဟေ့ ဟေ့
ဟေ့ ဟေ့ ဟေ့ ဟေ့ ဟေ့ ဟေ့ ဟေ့ ဟေ့

Handwritten text in a cursive script, likely a historical document or letter. The text is written on aged, yellowed paper with a large, irregular hole on the right side. The script is difficult to decipher due to fading and the damage to the document.

Handwritten text in a cursive script, likely Arabic or Persian, on aged, yellowed paper. The text is arranged in several lines and is partially obscured by a large, dark, irregular hole on the right side of the page. The paper shows signs of wear, including discoloration and fraying at the edges.