

Historic, Archive Document

Do not assume content reflects current scientific knowledge, policies, or practices.

68.61
Fall catalog

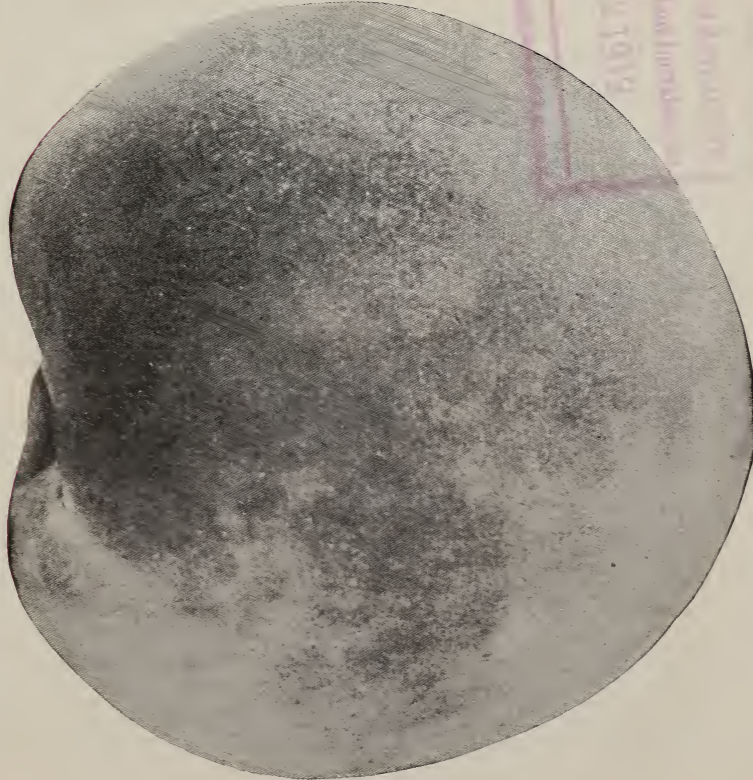
Woodlawn Nurseries

Nurseries

ALLEN L. WOOD, Proprietor

891 GARSON AVENUE

ROCHESTER, N. Y.



"Dr. Worcester" "The 20th Century Peach"

"Dr. Worcester" Peach is of very large size, averaging from 8½ oz. to 10 oz. of good color; flesh is yellow, firm and very juicy. The flavor of the "DR. WORCESTER" PEACH is its chief merit. It is rich and sugary with a full Peach flavor. An old gentleman said: "It tastes just like the old-fashioned Crawford that I used to get when I was on the farm." Fruit Growers who sampled this new Peach pronounced it the best they ever tasted.

Price, \$1.00 each; \$10.00 per 10. Only a limited quantity to offer.

Fall of 1919

M

to Peter Bissel

At

Washington,

County

State

D. C.

U. S. Dept. of Agriculture

Street

R. F. D.

Box

POSTMASTER:—Please notify us if this cannot be delivered and we will send postage for forwarding or return.

WOOD'S RELIABLE APPLE TREES

Are true to name because they are budded from bearing trees.

PRICES OF TWO-YEAR-OLD APPLE TREES

	Each	Ten	Hundred
5 to 7 ft., xxx,	75c	\$7.00	\$55.00
4 to 5 ft., xx,	65c	6.00	45.00

5 trees at 10 rate; 50 at 100 rate

SUMMER VARIETIES

Early Harvest—Medium size; pale yellow.
Red Astrachan—Medium size; one of best.
Sweet Bough—Large, pale yellow; tender flesh.
Yellow Transparent—Earliest of all apples.

AUTUMN VARIETIES

Duchess of Oldenburg—Red striped; tender and juicy. The fruit brings a high price on the market.
Fameuse (Snow)—One of the finest dessert apples.
Maiden Blush—Pale yellow with red cheek.
Wealthy—Large, with pale yellow skin, blushed and marked with stripes and splashes of red.

WINTER VARIETIES

Baldwin—Large, bright red apple. One of the most popular and profitable sorts for table or market.
Delicious—Large, dark red; uniform size.
Jonathan—Brilliant red; one of the best varieties for either table or market.
King—A superb red apple of the largest size and finest quality.
Northern Spy—Large, striped; mild flavor. One of the finest late keeping apples.
Rhode Island Greening—Is of the highest quality and ranks next in popularity to the Baldwin.
Rome Beauty—A large, smooth, uniform sized apple beautifully shaded and striped with red.
Stayman Winesap—Medium to large; uniform size and shape; red tinged with yellow.
Winter Banana—Fruit large, clear pale yellow with beautiful contrasting pinkish-red blush.

Also have the following varieties of Apples:

Alexander	Pound Sweet
Ben Davis	Spitzenburg
Fall Pippin	Stark
Gano	Sutton Beauty
Gilliflower	Tolman Sweet
Gravenstein	Wagener
Grimes' Golden	Winesap
Hubbardson Nonesuch	Wolf River
N. W. Greening	York Imperial
Pewaukee	

DWARF APPLE TREES

3 to 4 ft., xxx, 75c each; \$7.00 per 10
 Dwarf Apple Trees are very desirable for small gardens, and can be planted six to eight feet apart.

Can furnish the following varieties:
 Baldwin
 Delicious
 Duchess
 Early Harvest
 Fameuse
 McIntosh
 Rome Beauty
 Yellow Transparent



Woodlawn Golden Pippin

Woodlawn Golden Pippin—Is one of the very best varieties. The apple is golden yellow, with a delicious flavor.



McIntosh Red

McIntosh Red—A very attractive apple of a deep red color and of good uniform size.

CRAB APPLE TREES

5 to 7 ft., xxx, 75c each; \$7.00 per 10

Hyslop—Large, deep crimson.
Transcendent—Yellow with rich crimson cheek.
Martha—Red; one of the very best.
Whitney—Red; very hardy; a great bearer.

PEAR TREES

SPECIAL PRICES OF STANDARD PEAR TREES

5 to 7 ft., xxx,	Each	Ten	Hundred
4 to 5 ft., xx,	75c	\$7.00	\$55.00
	65c	6.00	45.00

5 trees at 10 rate; 50 at 100 rate

SUMMER PEARS



Bartlett

Bartlett—Large, golden yellow; tree is a strong grower and bears young and abundantly. The best and most popular of all pears both for market and home use.

Clapp's Favorite—This is without doubt the most productive pear in cultivation. It is of very large size; pale lemon yellow color with a bright crimson cheek; earlier than Bartlett.

FALL AND WINTER PEARS

Beurre d' Anjou—Large, buttery, melting, rich, vinous. The best late fall and early winter variety. October to January.

Beurre Bosc—Finest quality; late fall; brings highest market price. \$1.00 each; \$9.00 per 10.

Duchess—Very large; buttery, rich, juicy, excellent.

Flemish Beauty—One of the hardiest and most popular.

Kieffer—A popular pear with fruit growers. Large, rich yellow; valuable for canning.

Seckel—Our most highly flavored Pear, the standard of excellence. Fruit small, yellowish brown, with a russet-red cheek.

Sheldon—Of the very first quality; russet and red; melting, rich and delicious.

PRICES OF DWARF PEARS

3 to 4 ft., xxx, 75c each; \$7.00 per 10

Bartlett—Dwarf pears are similar to the standard fruit of the same variety.

Beurre d' Anjou—A great money-making dwarf that should be extensively planted.

Clapp's Favorite—A very good dwarf variety.

Duchess—A popular market variety as a dwarf.

Flemish Beauty—A great bearer. Fruit ripens during September and October.

Kieffer—A very profitable variety for market. October.

Seckel—This variety is valuable, both as a standard and dwarf.

QUINCE TREES

	Each	Ten	Hundred
3 to 4 ft., xxx,	85c	\$7.50	\$60.00

5 trees at 10 rate; 50 at 100 rate

Champion—Will bear more quickly than any other variety. Trees in the nursery row often bear when two years old. The fruit is large and handsome.

Rea's Mammoth—We consider this the best of all the Quinces. The largest and in every respect the finest variety of the Quince.



Orange

Orange—More largely planted than any other variety. Orange is large, bright golden yellow. Cooks very tender and has a fine flavor.

APRICOT TREES

3 to 4 ft., xxx, \$1.00 each; \$9.00 per 10

Alexander—Large, orange yellow fruit.

Harris—This variety is remarkable for its size, beauty and productiveness.

Moorpark—The largest of all apricots.

Montgamet—A pale yellow apricot.

PEACH TREES

PRICES OF PEACH TREES

	Each	Ten	Hundred
4 to 5 ft., xxx,	75c	\$7.00	\$50.00
3 to 4 ft., xx,	65c	6.00	40.00
5 trees at 10 rate; 50 at 100 rate			

"Dr. Worcester," "The 20th Century Peach," (See outside cover), \$1.00 each; \$10.00 per 10.

Belle of Georgia—Very large white peach with red cheek; very productive.

Carman—A new, hardy, rot-proof peach, ripening in middle of July. Fruit is large.

Champion—Large, handsome, creamy white with red cheek; sweet, rich, juicy.

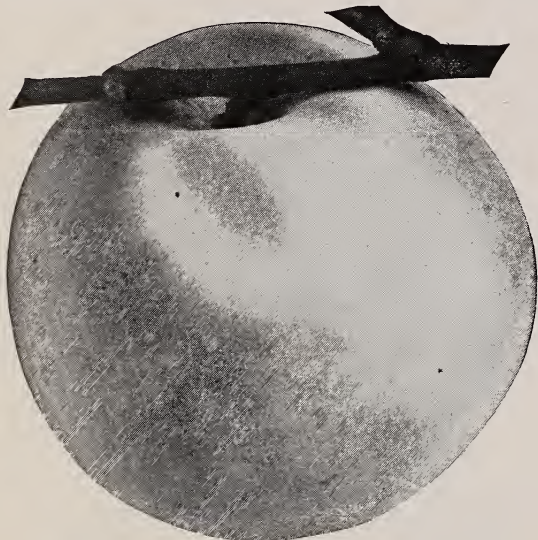
Crosby—One of the hardiest. Bright yellow; fine quality. Late.

Crawford's Early—A magnificent, large, yellow peach, of good quality. Vigorous and prolific; one of the most popular varieties.

Crawford's Late—Very large and good; ripens here about the close of peach season.

Elberta—One of the most valuable varieties for market. Golden yellow.

Greensboro—Very early; flesh white, melting, juicy, sweet.



Hale

Hale—In size it is one-third to one-half larger than the Elberta and is more highly colored. The skin is deep crimson. Flesh is golden yellow, firm and has a most delicious flavor. The pit separates easily from the flesh. It is exceptionally valuable as a commercial peach owing to its unusual keeping and shipping qualities. Will ship nearly as well as an apple.

Fitzgerald—Fully equal to Early Crawford in size, quality and color, with much smaller pit; a very early bearer.

Woodlawn Golden—A new variety which we recommend for general culture. The fruit is large and highly colored; flesh is yellow, firm, and flowing over with rich, finely flavored juice. Fine for canning as well as being the most desirable for eating from the hand. The tree is a strong grower and very productive.

Yellow St. John—Nearly as large as Crawford; one of the earliest yellow peaches.

CHERRY TREES

PRICES OF SOUR CHERRIES

	Each	Ten	Hundred
5 to 6 ft., xxx,	\$1.00	\$9.00	\$80.00
4 to 5 ft., xx,	90c	8.00	70.00
5 trees at 10 rate; 50 at 100 rate			



Bender—New, large; one of the best for Michigan and Northwest.

Dyehouse—Earliest of the sour cherries.

Early Richmond—Is a wonderful bearer and cannot be surpassed for hardiness.

English Morello—Best late sour cherry.

Montmorency—Large, red, productive; ten days later than Early Richmond.

PRICES OF SWEET CHERRIES

	Each	Ten	Hundred
5 to 7 ft., xxx,	\$1.00	\$9.00	\$80.00
4 to 5 ft., xx,	90c	8.00	70.00
5 trees at 10 rate; 50 at 100 rate			

Black Tartarian—Large; very productive.

Gov. Wood—Clear light red; tender.

Lambert—Very large; jet black.

Napoleon—Yellow with bright red cheek.

Windsor—Large, liver-colored; best late.

PLUM TREES

PRICES OF PLUM TREES

	Each	Ten	Hundred
5 to 7 ft., xxx,	\$1.00	\$9.00	\$80.00
4 to 5 ft., xx,	90c	8.00	70.00
5 trees at 10 rate; 50 at 100 rate			

Abundance—Large and beautiful; amber, turning to a rich, bright cherry; flesh light yellow and sweet.

Burbank—Large and beautiful; clear cherry red; an abundant bearer; valuable market variety.

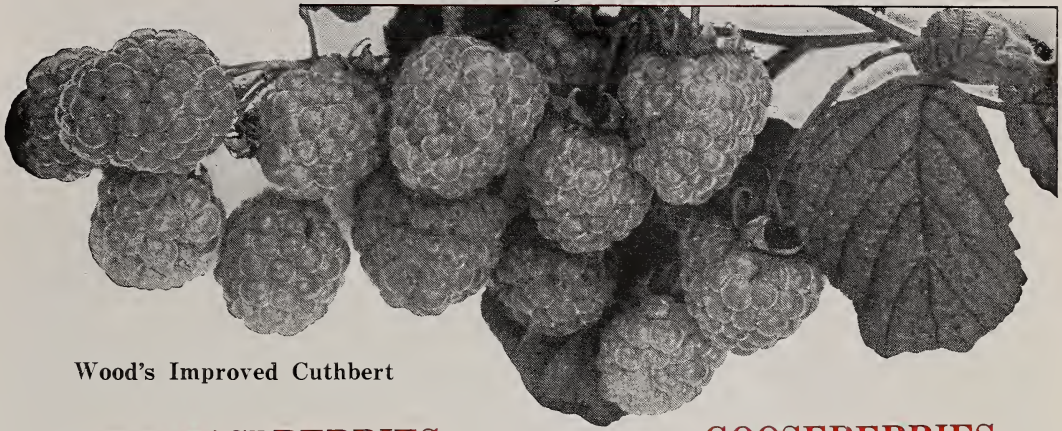
Bradshaw—Very large; early; dark red; juicy and good. Very productive; valuable for market.

Lombard—Violet red; a leading market variety.

Reine Claude—Greenish-yellow; housewife's ideal plum for canning and preserving.

Wood's Improved German Prune—Best of all Prunes for drying. Juicy, rich, delicious.

SMALL FRUITS



Wood's Improved Cuthbert

RED RASPBERRIES

25c each; \$1.50 per 10; \$2.00 per 25;
\$5.00 per 100; \$35.00 per 1,000

Wood's Improved Cuthbert—One of the best varieties for market.

St. Regis Everbearing—A good variety for the garden.

Columbian—Large, purplish color; very productive. Valuable for market.

BLACK RASPBERRIES

25c each; \$1.50 per 10; \$2.00 per 25;
\$5.00 per 100; \$35.00 per 1,000

Plum Farmer—The best Black Raspberries on the market.

BLACKBERRIES

25c each; \$1.50 per 10; \$2.00 per 25;
\$5.00 per 100; \$35.00 per 1,000

Blowers—The giant of all Blackberries. Enormously productive.

Snyder—Very hardy and productive; valuable for home use and market.

Eldorado—One of the hardiest Blackberries in cultivation.

CURRENTS

25c each; \$2.00 per 10; \$15.00 per 100;
\$125.00 per 1,000

Wood's Improved Cherry—Strong growers; fruit is large, deep red and sub-acid.

Fay's Prolific—Less acid than in Cherry; bunch large.

Red Cross—Large and productive; one of the best for market.

Perfection—Very large; beautiful bright red. Price, 35c each; \$3.00 per 10.

Lee's Prolific—Large, black, excellent.

Wood's Giant Black—The largest and finest black variety known. Valued for jellies. Price, 35c each; \$3.00 per 10.

GOOSEBERRIES

PRICE OF 2-YEAR-OLD GOOSEBERRY BUSHES

35c each; \$3.00 per 10; \$20.00 per 100

Downing—Large, handsome, pale green and of splendid quality.

Pearl—This variety bears a great resemblance to the Downing. It is very hardy; free from mildew; superior in size and quality. The fruit is pale green—fine for cooking.

Josselyn—An American seedling of large size, smooth, prolific and hardy, of best quality. Has been tested over a wide extent of territory by the side of all the leading varieties. A wonderful cropper, with bright, clean, healthy foliage.

GRAPES

Price of 2-year-old Grape Vines
50c each; \$4.50 per 10

Concord—There are more Concords planted by vineyardists than all other varieties combined. Bunch is large; shouldered.

Brighton—A large, delicious, red grape.

Niagara—Occupies the same position among the white varieties as Concord among the black; the leading profitable market sort.

Worden—Bunch large, compact, handsome; berries larger than those of the Concord.

ASPARAGUS

Price of 2-year-old Asparagus Roots
10 for 50c; 25 for \$1.00; 100 for \$2.50;
1,000 for \$10.00

Barr's Mammoth—Robust and vigorous and throws large shoots which remain white above ground as long as they are fit for cutting.

Conover's Colossal—This variety is remarkably tender and finely flavored.

Palmetto—An early and great yielder and very even and regular in growth. It has been tested both North and South and has proved entirely successful in every way.

RHUBARB—PIEPLANT

Wood's Famous Strawberry Rhubarb
Price, 25c each; 2 for 40c; \$1.50 per 10;
\$10.00 per 100

ORNAMENTAL TREES



Avenue of Norway Maples

A denotes trees which attain the largest size, 50 feet and upwards.
 B " " " " " secondary size, 20 to 40 feet.
 C " " " " " medium size, 8 to 15 feet.

MAPLE TREES

Maple, Norway (A)—The compact, vigorous nature of this tree renders it desirable for the street or lawn. The growth is fairly fast, the head massive and rounded, with broad rich green foliage. This variety is highly recommended by the Shade Tree Commissioners for street and park planting.

	Each	Ten	Hundred
6 to 8 ft. -----	\$1.00	\$ 8.50	\$ 75.00
8 to 10 ft. -----	1.50	12.00	100.00
10 to 12 ft. -----	2.00	15.00	125.00
Extra 2-in. Caliper-----	3.00	25.00	200.00
Extra Large 2½ to 3½ in. Caliper -----	5.00	40.00	

Maple, Sugar or Rock (A)—A native tree valuable for its production of sugar and wood. Very stately in form, rapid grower and has fine foliage. Valuable ornamental variety. 8 to 10 ft., \$1.50 each; \$12.00 per 10.



Silver Maple—A favorite for the street, park or lawn.

Maple, Silver-Leaved or Soft Maple (A)—Of rapid growth, large size, and rounded form; foliage bright green above and silvery beneath; very hardy and easily transplanted.

	Each	Ten	Hundred
6 to 8 ft. -----	.75	\$ 7.00	\$ 60.00
8 to 10 ft. -----	1.00	9.00	80.00
10 to 12 ft. -----	1.50	12.00	100.00
Extra Large Size	2.50	20.00	

Maple, Ash-Leaved or Box Elder (B)—A fine rapid growing variety, with handsome, light green foliage and spreading head; very hardy; desirable for street planting and succeeds in many sections where other varieties do not thrive.

8 to 10 ft., \$1.00 each; \$8.50 per 10
 10 to 12 ft., \$1.50 each; \$12.00 per 10

Maple, Schwedlerii (Red Leaved) (B)—An excellent and striking variety. The beautiful leaves attract attention all season, but are especially fine in spring, when their gleaming red and purple contrast brightly with the delicate green of other trees. Purplish-green in midsummer; golden yellow in autumn. 8 to 9 ft., \$2.00 each; \$15.00 per 10.



Wier's Cut-Leaved Maple

Maple Wier's Cut-Leaved (A)—This is one of the most remarkable and beautiful trees with cut foliage. Its growth is rapid, shoots slender and drooping, giving it a habit almost as graceful as the Cut-Leaved Birch. 8 to 10 ft., \$2.00 each; \$15.00 per 10.

ORNAMENTAL TREES



Rivers' Beech is noted for its rich, glossy foliage. **Beech, Rivers' Purple-Leaved (B)**—An elegant, compact, low-branching tree. Foliage crimson, changing to dark purple in summer. Finest of all purple-leaved trees, a most striking lawn tree. 4 to 5 ft., \$2.50 each.

Mountain Ash (B)—A favorite; erect growing tree of medium size, producing white flowers early in the Spring, followed by clusters of bright scarlet berries which remain on the tree through the Winter. 8 to 10 ft., \$1.50 each.

Thorn, Paul's New Double Flowering (C)—This tree deserves to be classed among the most beautiful of all ornamentals. It is a dense, low grower, and occupies but little space; well adapted to beautify small grounds. Blooms in May and June. Flowers are a bright carmine color. 4 to 5 ft., \$1.25 each.



Cut-Leaved Birch

Birch, Cut-Leaved Weeping (A)—Its tall, slender, yet vigorous growth, graceful, drooping habit, silvery-white bark and delicately cut foliage present a combination of attractive characteristics rarely met with in a single tree. 6 to 8 ft., \$1.50 each.

Tulip Tree, or White Wood (A)—One of our largest native trees, with large glossy leaves shaped like a violin, and beautiful tulip-like flowers. Very desirable for planting on lawns, or where rapid growing trees are desired. 8 to 10 ft., \$1.50 each.



Oriental Plane

Oriental Plane (A)—A well known tree. Extensively used for street and park planting, especially in cities where there is much smoke.

	Each	Ten	Hundred
8 to 10 ft. -----	\$1.50	\$12.00	\$100.00
10 to 12 ft. -----	2.00	15.00	125.00

Poplar, Carolina (B)—Pyramidal in form and robust in growth; leaves large and glossy; valuable for screens. Very rapid grower.

	Each	Ten	Hundred
8 to 10 ft. -----	\$.75	\$ 6.50	\$ 50.00
10 to 12 ft. -----	1.00	8.50	75.00



Lombardy Poplar

Poplar, Lombardy (A)—The erect, vigorous and full spiry form lends a charm and dignity to a street, boundary or landscape. Very desirable on large grounds to break the average heights and forms of other trees.

	Price	Each	Ten	Hundred
8 to 10 ft. -----	\$1.00	\$ 8.50	\$ 75.00	
10 to 12 ft. -----	1.50	12.00	100.00	

ORNAMENTAL TREES



Catalpa Bungeii Each Side of Walk

Catalpa, Bungeii (Umbrella Catalpa) (C)—Grafted on stems 6 to 8 ft. high, it makes an umbrella shaped top without pruning; perfectly hardy. Leaves large, glossy, heart-shaped, deep green. One of the most unique trees; desirable for lawn, park and cemetery planting. Two-year heads, extra large, \$2.00 each.

Catalpa, Speciosa (A)—This medium to large tree with its tropical-like foliage and its pyramids of white flowers is worthy of a place in every collection. It is very ornamental and is a valuable tree for the street or park. 7 to 8 ft., \$1.00 each; 8 to 10 ft., \$1.50 each.

Willow, Babylonica (B)—A well known weeping variety. Most graceful tree of large size. 7 to 8 ft., \$1.00 each.

Willow, Golden (B)—A distinct variety, with bright golden bark. Habit same as Babylonica. 7 to 8 ft., \$1.00 each.



Tea's Weeping Mulberry

Mulberry, Tea's Weeping (C)—One of the finest, most graceful and satisfactory of weeping trees. Umbrella shaped head, with slender willowy branches drooping to the ground. It has beautiful glossy foliage, handsomely cut or divided into lobes. It is perfectly hardy. \$2.00 each.

Mulberry, Downing (B)—Berries very large, black, and of excellent quality. Should be in every garden. Very valuable when planted near a Cherry Orchard, as the birds will eat this fruit instead of the Cherries. 5-6 ft., \$1.00 each; \$8.50 per 10; \$75.00 per 100.

Mulberry, Russian (B)—A hardy variety. Tree is a rapid grower; foliage is abundant. 7 to 8 ft., \$1.00 each; \$8.50 per 10; \$75.00 per 100.

Elm, American (A)—Broad, arching branches with splendid dark green foliage, affording abundant shade. Ranks among the very best for avenue, or park planting. 8 to 10 ft., \$1.00 each; \$8.50 per 10. 10 to 12 ft., \$1.50 each; \$12.00 per 10.

Elm, Camperdown (Weeping Elm)—One of the most picturesque weeping trees. 6 to 8 ft., \$2.00 each.

Horse Chestnut (A)—The well-known variety. Has magnificent spikes of white flowers. Fine for street planting. 7 to 8 ft., \$1.25 each.



American Linden or Basswood

Linden, American (B)—Of unusual stately beauty. Foliage is luxuriant and the curious cream colored flowers have a delightful fragrance. Blooms in July. Growth is rapid and upright. Extra fine Trees, 10 to 12 ft., \$2.00 each; \$15.00 per 10.

Laburnum or Golden Chain (C)—Has smooth shining foliage. The name of Golden Chain alludes to the length of drooping racemes of yellow flowers. 4 ft., \$1.00 each.



Bechtel's Double-Flowering Crab

Crab, Bechtel's Double-Flowering (C)—One of the most beautiful of the many fine varieties of the flowering crabs. Tree medium size, covered in early spring with large, double, fragrant flowers of a delicate pink color. From a distance they have the appearance of roses. 2 to 3 ft., 75c each; 3 to 4 ft., \$1.00 each.

ORNAMENTAL SHRUBS

The Shrubs we grow are of the very choicest varieties, are extra strong, two to three years old and from two to four feet in height.

D denotes shrubs, which attain 9 to 12 feet in height
 E " " " " 5 to 8 " "
 F " " " " 2 to 4 " "



Althea, or Rose of Sharon

Althea, or Rose of Sharon (D)—Flowers are of good size, trim and attractive; blooms in September and October. Colors, Pink, Purple, Red, White. 50c each.

Tree Althea (D)—Same as bush, but grown in tree form, with single stem. 75c each.

Almond (Large Double Flowering) (E)—One of the most beautiful early flowering shrubs, bearing double flowers like small roses. Dark red. 50c each.

Barberry, Thunbergii (F)—A shrub of marked excellence on account of its bright green foliage, which changes to brilliant red in the fall, and its bright red berries, which are conspicuous throughout the winter. The habit is dwarf and regularly spreading. Grows well in the shade and is extensively used in landscape work. Very hardy; has never been known to winter-kill. 35c each.

Cornus, Elegantissima (Variegated Leaf) (E)—One of the finest shrubs, with beautifully variegated foliage. Some leaves are broadly margined with white, while others are entirely white. 50c each.

Cornus, Sanguinea (E)—A fine, rapid-growing shrub with red bark; leaves have a broad margin of white. One of the very best variegated-leaved shrubs. 50c each.



Deutzia, Pride of Rochester

Deutzia, Pride of Rochester (E)—Very large double white flowers. It excels in size of flower, profuse bloom and vigorous growth; nearly a week earlier than *Deutzia Crenata*. 35c each.

Deutzia, Gracilis (F)—A charming species of dwarf habit; flowers pure white. Fine for growing in front of taller shrubs. 40c each.

Deutzia, Candida (E)—Pure white flowers, very double. 40c each.

Deutzia, Lemoinei (F)—Pure white flowers, borne on stout branches of upright growth. Dwarf habit, free flowering. 50c each.



Lemoine Lilac

Lilac, Lemoine (D)—A choice variety bearing large clusters of double white flowers. 75c each.

Lilac, Ludwig Spaeth (E)—Flowers large and a deep purplish red. Very desirable. 75c each.

Lilac, Pres. Grevy (E)—One of the finest. Panicles large and flower a beautiful blue. 75c each.

Lilac, Purple (E)—Bluish-purple flowers, standard variety; always good. 50c each.

Lilac, White (E)—Cream colored flowers; very fine. 50c each.



Golden Elder

Elder, Golden-Leaved (E)—A handsome variety with golden-yellow foliage, which renders the plant very conspicuous and effective; white flowers. 50c each.

ORNAMENTAL SHRUBS



Butterfly Bush

Butterfly Bush (E)—This beautiful shrub is greatly admired by everyone and should be included in every collection. Matures rapidly and will make a handsome bush the first season. It produces beautiful lilac-colored flowers in profusion. Blossoms the entire summer; splendid for cutting. Should be cut back to the ground early every spring. 35c each.

Calycanthus, or Sweet-Scented Shrub (E)—Its foliage is rich; flowers of a rare chocolate color, with an agreeable odor. Blossoms in June and intervals through the summer. Very desirable. 50c each.

Forsythia, or Golden Bell (E)—A very early and showy spring bloomer; flowers bright yellow, appearing before the leaves. Very effective for covering steep slopes, walls, fences and arbors. 40c each.

Fringe, Purple (Smoke Tree) (D)—A small tree or shrub very much admired on account of its peculiar fringe or hair-like flowers covering the whole surface of the bush in mid-summer. 50c each.

Quince, Japan (E)—Dark green foliage, and showy, deep scarlet flowers of good size, produced singly or in masses along the branches. Much admired and often used for hedges. 40c each.



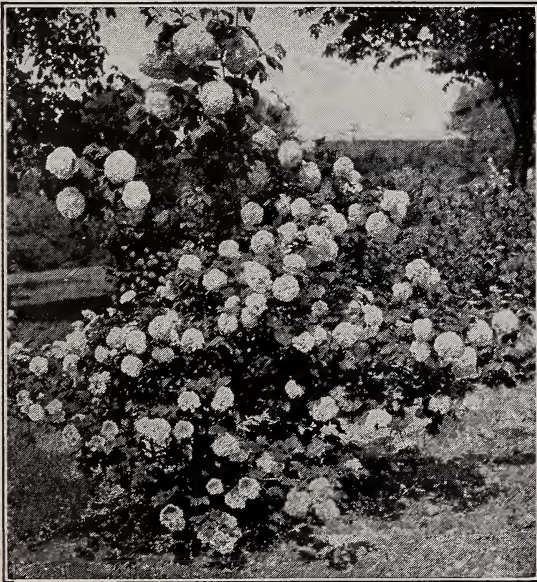
Honeysuckle, Upright (E)—A well known shrub of erect habit. Valuable for its handsome flowers and showy fruit. Delightfully fragrant; one spray will fill a room with its delicate perfume. Colors, Pink, Red and White. 40c each.

High Bush Cranberry (E)—Very ornamental. Its red berries resembling cranberries which hang on until destroyed by frost. 50c each.

Tamarix (E)—A strong upright grower, with fine feathery foliage. Small pink flowers. Splendid shrub for seaside planting. 50c each.

Snowberry, Racemosus (E)—Bushy form, small pink flowers in summer; quantities of large, white, waxy, roundish berries in autumn that remain on the plant through part of the winter. 40c each.

Snowberry, Vulgaris (E)—Low growing, spreading, graceful habit; foliage attractive; noteworthy from the beauty of its clusters of red berries which hang on the bush all winter. 40c each.



Common Snowball

Snowball, Common (E)—A well-known favorite shrub producing its snowy-white sterile flowers in large balls in June. 40c each.

Snowball, Japan (Viburnum Plicatum) (E)—An erect, compact shrub, blooming in June; completely covered with large balls of flowers that are as white as snow; foliage is dark green. We recommend this most highly. 60c each.



Hydrangea, P. G.

Hydrangea, P. G. (E)—One of the most popular hardy shrubs. The immense heads of bloom are cream-color in bud, pure white when fully expanded, changing to pink and bronze with age, and finally to brown when frosted. 40c each.

Hydrangea, P. G., Tree Form (E)—Same as bush, but grown in tree form with single stem. Very desirable. \$1.00 each.

Hydrangea, Arborescens Grandiflora Alba (Hills of Snow) (E)—This hardy American shrub is the very finest addition to this class of plants found in many a year. The blooms are of the very largest size, of pure snow-white color, and the foliage is finely finished. 50c each.

ORNAMENTAL SHRUBS



Spirea Van Houttei is especially attractive when planted in groups

Spirea, Van Houttei (E)—The grandest of all the Spireas, and one of the very best of all shrubs; a complete fountain of pure white bloom in May and June. 40c each.

Spirea, Anthony Waterer (F)—A dwarf variety of great beauty. Its broad flat heads of red flowers continue in perfection all Summer. 50c each.

Spirea, Aurea (Golden) (E)—Foliage green, bordered with a rich golden yellow. In June the branches are covered with double white flowers. 40c each.

Spirea Bumalda (F)—A low growing bush with dark leaves. Blooms early in May. Flowers a delicate pink. Very desirable. 40c each.

Spirea, Billardi (E)—Rose colored flowers in spikes; blooms nearly all summer. 40c each.

Spirea, Blue (New) (F)—Produces beautiful blue flowers all through autumn until checked by frost. Very profuse bloomer and one of the best of the late flowering shrubs. Showy in itself and fine for planting in contrast with other shrubbery. 50c each.

Spirea, Prunifolia (Bridal Wreath) (E)—A superb old-fashioned variety, with graceful upright, slender branches covered with a wreath of white flowers in May. 50c each.

Spirea Callosa (E)—A free grower and blooms nearly all summer. Deep rose colored blossoms. 50c each.

Spirea, Thunbergi (F)—A dense, feathery bush. The foliage, which is a peculiar shade of yellowish green, changing in autumn to bright red and orange. Flowers pure white, borne in feathery masses in early spring. 50c each.

Weigela, Candida (E)—A choice variety, blooming in great profusion during June and to some extent all summer. Pure white. 40c each.

Syringa (E)—Of vigorous habit. Very hardy, with large handsome foliage and beautiful white flowers produced in greatest profusion. One of the best and most popular shrubs. 40c each.



Weigela, Rosea

Weigela, Rosea (E)—An elegant shrub, with fine rose-colored flowers; of erect, compact growth; blossoms in June. 40c each.



Golden Syringa

Syringa, Golden (F)—A very pretty medium sized shrub with golden-yellow foliage. It keeps its color the entire season. Very valuable to plant with other shrubbery. 50c each.



Weigela, Eva Rathke

Weigela, Eva Rathke (F)—Flowers brilliant crimson. A very attractive variety. Almost a continuous bloomer. 50c each.

Weigela, Variegated (F)—Of dwarf habit; finely variegated foliage with its rose colored flowers. One of the best, 50c each.

PLANTS AND BULBS

HOLLYHOCKS (Double)

Hollyhocks, King of the Garden—Most ornamental and handsome garden flowers, with their tall spikes dotted with large, double flowers of the most lovely color. Can be used with great effect as borders or against buildings or fences. Colors Maroon, Pink, Purple, Red, White and Yellow. 30c each; 6 (one of each) for \$1.50.



Paeonia, Duchess de Nemours

Duchess de Nemours—Sulphury white.
Delachei—Dark velvety crimson.
Edulis Superba—Brilliant pink.
Festiva—Creamy white (fine late variety).
Hamlet—Pink (very large flowers).
Louis VanHouttei—Cherry red.
Paeonia 2-year-old roots, 50c each; \$4.50 per 10.

GOLDEN GLOW OR SUMMER CHRYSANTHEMUM

Golden Glow—Blooms from early summer until frost. 2 for 35c; 10 for \$1.50.

SHASTA DAISY

Shasta Daisy—A very hardy perennial, pure white flowers. Strong plants. 30c each; 6 for \$1.50.

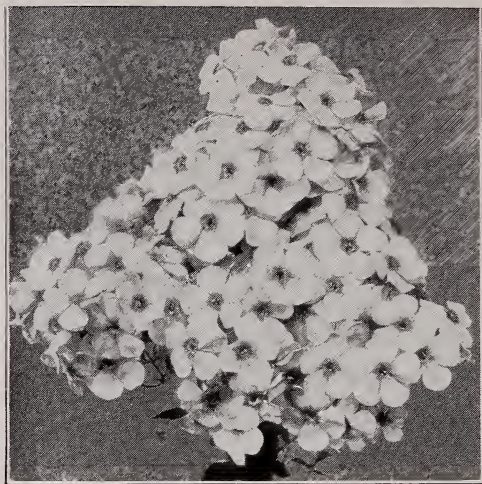
JAPAN IRIS

Japan Iris—Flowers most delicate and beautiful colors imaginable. 30c each; 6 for \$1.50.



Gaillardia

Gaillardia—Most gorgeous of all flowering plants. A hard center of deep maroon is thickly bordered with petals of orange and yellow, ringed by circles of crimson. Bloom from June until frost. 30c each; 6 for \$1.50.



Phlox

La Vague—A beautiful shade of violet.
Champs Elysee—Bright red. A great favorite.
Pantheon—Peerless pink. Extra large.
Caran d Ache—Variegated with old rose shadings.
R. P. Struthers—Rosy Carmine, with dark red eyes.
Fraulein G. Von Lassburg—Pure white. Very large.
Phlox—Strong field-grown. 30c each; 6 (one of each) for \$1.50.

DIGITALIS OR FOXGLOVE

Digitalis or Foxglove—One of the most widely known and popular plants. 30c each; 6 for \$1.50.

DELPHINIUM (LARKSPUR)

Delphinium (Larkspur)—Flowers beautiful deep blue, from June until frost. 30c each; 6 for \$1.50.

MALLOW MARVELS (HIBISCUS)

Mallow Marvels (Hibiscus)—Flowers are immense in size. White, with a velvety crimson in the center of each flower; will produce several hundred flowers in a season. 35c each; 6 for \$1.80.



Pompon Chrysanthemums

Pompon Chrysanthemums are entirely hardy and live through the winter without protection. Bloom after all the other flowers are destroyed by frost. We have them in the following colors: Red, White and Yellow. 30c each; 3 (one of each color), 75c; 10 for \$2.25.

HEDGE PLANTS



Barberry Thunbergii Hedge

Barberry Thunbergii — Dwarf growing; foliage, rich bright green which takes on a brilliant red color in autumn. Red berries also appear at that time. It is perfectly hardy, easily transplanted, and free from insects. Very ornamental and as attractive in winter as in summer.

	Each	Ten	Hundred
15 to 18 in.	25c	\$2.00	\$12.00
18 to 24 in.	30c	2.50	14.00
2 to 3 ft.	35c	3.00	16.00

ORAMENTAL VINES

Wistaria, Chinese Purple—One must see this plant in bloom to appreciate its magnificence. It flowers in spring in long drooping racemes; very beautiful; perfectly hardy. 50c each.

Birthwort, or Dutchman's Pipe — A rapid growing vine, with magnificent foliage and curious pipe-shaped brown flowers. . \$1.00 each.



Hall's Japan Honeysuckle

Honeysuckle, Hall's Japan — A strong, vigorous grower, almost evergreen, with pure white flowers, turning to yellow. 40c each.

Ampelopsis Veitchii (Japan Ivy)—A beautiful, hardy, climbing plant. 50c each.

Clematis, Henryii—Very large, white flowers; rapid grower. 75c each.

Clematis, Jackmanni—Large, purple flowers; abundant bloomer. 75c each.

Clematis, Mme. Ed. Andre—Flowers medium size, dark red. 75c each.

Clematis, Paniculata—Single, white flowers borne in large panicles. 75c each.



California Privet Hedge

California Privet—A rapid and vigorous grower. It has handsome glossy, oval-shaped leaves which remain on well into the winter. Very popular for ornamental hedges and trimmed specimens.

	Each	Ten	Hundred
15 to 18 in.	10c	\$.75	\$4.00
18 to 24 in.	15c	1.00	5.00
2 to 3 ft.	20c	1.25	6.00
3 to 4 ft.	25c	1.50	7.00

CHOICE ROSES



Snow Queen—Most Perfect White Rose

Baby Rambler, Dwarf (Crimson), \$1.00.

Snow Queen (White), \$1.00.

General Jacqueminot (Crimson), 85c.

Gruss an Teplitz (Scarlet), \$1.00.

Killarney (Pink, Queen of Roses), \$1.00.

Paul Neyron (Deep Rose color), 85c.

Mrs. John Laing (Clear Pink), 85c.

Mrs. R. G. S. Crawford (Deep Pink), 85c.

Prince Camille de Rohan (Dark Red), 85c.

Richmond (Brilliant Crimson), \$1.00.

Madam Plantier (White), 85c.

CLIMBING ROSES

American Beauty (Rich Crimson), 85c.

Crimson Rambler (Crimson), 85c.

Dorothy Perkins (Shell Pink), 85c.

Pink, White and Yellow Rambler, 85c.

Thousand Beauties (Soft Rose), 85c.

QUALITY BULBS DIRECT TO YOU

HYACINTHS



Hyacinths—The beautiful flower spikes and the delicious fragrance of the Hyacinth make it most desirable for either forcing or out of door culture. Colors, Blue, Pink, Red and White, or Mixed. 12c each; \$1.00 per doz.; \$7.00 per 100.



Hyacinths in Pot

Charges prepaid on Bulbs on each and dozen prices.



TULIPS

The Tulip is by far the most popular of the Spring flowering bulbs, both on account of its dependable bloom and its variety of colors.

Single Early Flowering, Mixed—60c per doz.; \$4.00 per 100.

Single Early Flowering by Colors—75c per doz.; \$5.00 per 100.

Double Mixed—80c per doz.; \$5.25 per 100.

Double by Colors—\$1.00 per doz.; \$7.00 per 100.

May Flowering or Cottage Garden Tulips

This class of Tulips with their exquisite coloring and long and graceful stems coming in the month of May, between the Early Tulips and the Darwins.

Cottage Garden Mixed—80c per doz.; \$5.25 per 100.

Cottage Garden by Colors—\$1.00 per doz.; \$7.00 per 100.

Darwin Tulips

The Darwin Tulips are a distinct class of Tulips, and can be easily told by their large flowers, tall stems and wonderful tints and colorings, found in no other class of Tulips. They come in almost all colors but yellow—not even so much as a yellow mark can be found in the true Darwin Tulip. They are the very latest of the Tulips to bloom.

Darwin Mixed—80c per doz.; \$5.25 per 100.

Darwin by Colors—\$1.00 per doz.; \$7.00 per 100.

QUALITY BULBS DIRECT TO YOU

NARCISSI (DAFFODILS)



Narcissi, Single Trumpet

Narcissus—While they do not have the gorgeous colorings of the Tulip, still their dainty color and graceful blossoms make them one of the best of our spring bulbs. Also they are easy to force for the house. They will establish themselves out of doors and increase, giving better results each year until the clumps become too crowded and must be taken up and replanted.

Narcissus, Single Trumpet—75c per doz.; \$4.50 per 100.

Narcissus, Double Van Sion—\$1.00 per doz.; \$7.00 per 100.

Narcissus, Paper White Grandiflora—This variety is not suitable for outdoor planting, but is by far the most popular for forcing indoors. Place the bulbs in pebbles and water and keep in dark place until there is a proper root growth. Then bring into a cool window and in a few weeks you will have large cluster of fragrant flowers on long stems. They are very easy to grow and very desirable for cutting.

Narcissus, Paper White — 75c per doz.; \$4.50 per 100.

Charges prepaid on Bulbs on each and dozen prices.



Lily of the Valley

Lily of the Valley—Flowers small, bell-shaped, in pretty racemes; very fragrant. Will thrive in any kind of soil. 75c per 10; \$5.00 per 100.



CROCUS

These brave and cheerful flowers need no introduction. We look for the Crocus as the herald of Spring. Plant plentifully in the lawn. For the best results plant in the border among the shrubs, where they will multiply and increase in beauty from year to year. If planted in the grass, the foliage should be left as long as possible without cutting, in order that the bulbs may mature.

Crocus, Yellow Purple, White, Striped—40c per doz.; \$3.00 per 100.

Crocus, Mixed—35c per doz.; \$2.50 per 100.

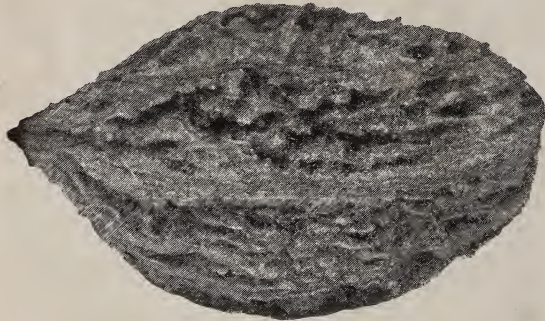
**Charges Prepaid
on Bulbs on each
and dozen prices**

NORTHERN GROWN NUT TREES



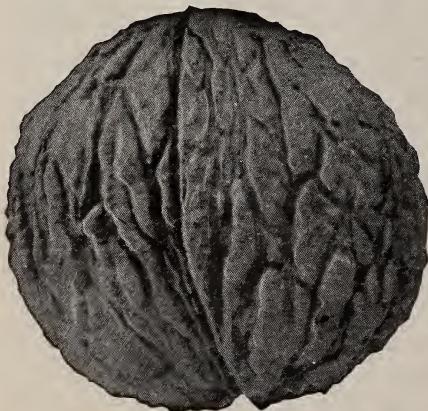
Japan Chestnuts in the Bur

Chestnut, Japan—Of dwarf habit, hardy, and extremely productive. The tree comes into bearing at an early age, and is decidedly ornamental. 4 ft., \$1.00 each; \$9.00 per 10..



Butternut

Butternut—Produces large, handsome, elongated nuts with rich, sweet, oily kernel. 4 to 5 ft., \$1.00 each; \$9.00 per 10.



Black Walnut

Black Walnut—The tree is a rapid grower, producing a large, round nut of excellent quality. 4 to 5 ft., \$1.00 each; \$9.00 per 10.

Chestnut, American Sweet—This is the well-known native variety with which nearly everyone is familiar. It bears a nut of good quality and seldom fails to produce a good crop.



American Chestnut

Chestnut trees are desirable for ornamental planting. 4 to 5 ft., \$1.00 each; \$9.00 per 10.

Chestnut, Spanish—Handsome, round-headed tree, producing large crops of very large nuts. Valuable shade tree and very ornamental. 4 ft., \$1.00 each; \$9.00 per 10.

Japan Walnut—A choice improved variety, grows with great vigor, forming a handsome head without pruning; has withstood a temperature of 20° below zero without injury. The shell is a little thicker than that of the English Walnut, which it resembles in a general way; kernels are meaty, delicate, and can be removed entirely. Tree begins to bear when 2 or 3 years old. 3 to 4 ft., \$1.00 each; \$9.00 per 10.



The Nuts in the above photograph were picked from a five-year-old English Walnut tree near our office.

English Walnut—An exceedingly handsome tree for the lawn. It produces large crops of thin shelled, delicious nuts which are always in demand at good prices. The English Walnut can be grown in the Eastern and Northern States as well as in California and the South. It is grown successfully in Monroe County, N. Y., and we have some extra nice trees growing in our nursery. 2 to 3 ft., \$1.00 each; \$9.00 per 10.