

WELCOME TO WISCONSIN

PREVENT FOREST FIRES
HELP KEEP OUR COUNTRY GREEN
WISCONSIN CONSERVATION DEPARTMENT



WISCONSIN COMMUNITIES WELCOME AND HELP INDUSTRY GROW
Industry Fact Kit available from the Governor's Office

WISCONSIN VACATIONLAND FOR ALL
The Wisconsin Human Rights Statute Sec. 942.04 guarantees full and equal enjoyment of all places of public accommodation or amusement alike to all persons of every race and color.

1961
Wisconsin
HIGHWAY MAP

OFFICIAL
HIGHWAY MAP
OF
WISCONSIN
ISSUED 1961

Scale: 1 inch = approximately 14 miles

LEGEND

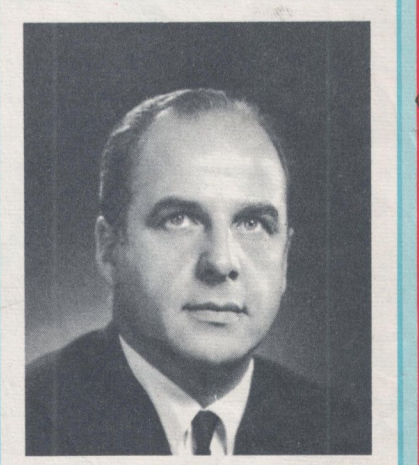
Rivers & Streams	Public Hunting & Fishing Grounds
Cities over 10,000	Four Lane or Dual Wayside
Communities under 10,000	State Capitol
Railroad	Airport
County Boundary	State or Federal Institution
Lookout Tower	State or Federal Forest
Roadside Park	National Forest
Great River Road	Public Camp & Picnic Grounds
Portland Cement or Bituminous Concrete	Indian Reservation
Bituminous	Forest Ranger Station
Gravel or Stone	State Numbered Highways
Interstate Highway Proposed	Mileage between Towns & Junctions
County Park	U.S. Numbered Highways
County Trunk Unsurfaced	Interchange
County Trunk Letter Surfaced	Interstate Highway Completed
Seaplane Base	Four Lane or Dual
Lakes & Flowages	Fish Hatchery
	Dam
	County Seat
	Highway Separation
	State Park
	Scenic or Memorial

U.S. numbered highways shown in red, not always the best or shortest route

prepared by the
STATE HIGHWAY COMMISSION
for free distribution

WESTERN PRINTING & LITHOGRAPHING CO., RACINE, WIS.

SPEED LIMITS: DAY 65 - NIGHT 55 EXCEPT AS POSTED.



WELCOME TO WISCONSIN
This map is published as a guide to the highways of Wisconsin. It will serve you well in that way.
But this is more than just a highway map. It is a catalog of pleasure and beauty, a directory of business and profit. It can lead you to cool, sparkling lakes, to rushing rivers, to broad, sandy beaches, to rolling hills and valleys, to calm, stately forests. Here in Wisconsin you can find outdoor recreation to suit every taste, be it fishing, hunting, swimming, boating, skiing or hiking, or whether you just like to look at beautiful scenery.
This map can lead you to fine restaurants, to hospitable resorts, to scenes of historical interest. It can lead you to hunting, industrial communities, to well-kept, efficient farms, to friendly people. Business is pleasurable in Wisconsin.
All we ask of you is that you drive carefully and observe our laws.
May your trip be a happy one.

Jay Carl Nelson
GAYLORD NELSON, Governor



