

FOLLOWING ACTION:

- a. Ordered to remain closed. Yes. _____ No. _____
- b. Ordered to cease operations immediately. Yes. _____ No. _____
- c. Authorized to produce at the following rate.

Item to be manufactured	Monthly quantity
Signature of authorizing officer	
Designation of authorizing unit	

Osaka ←



Railway
Fametsuki Station

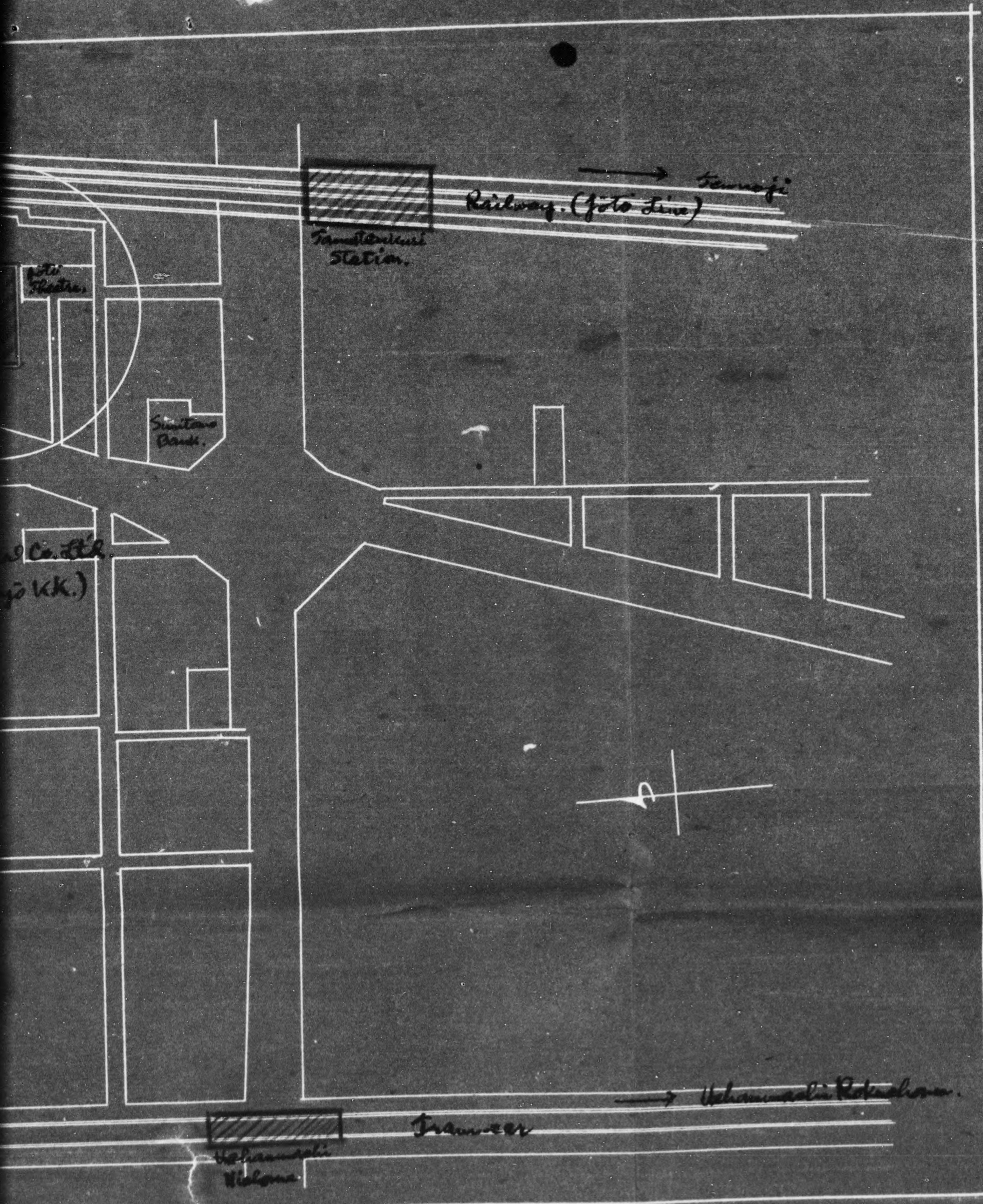
Saitama Bank

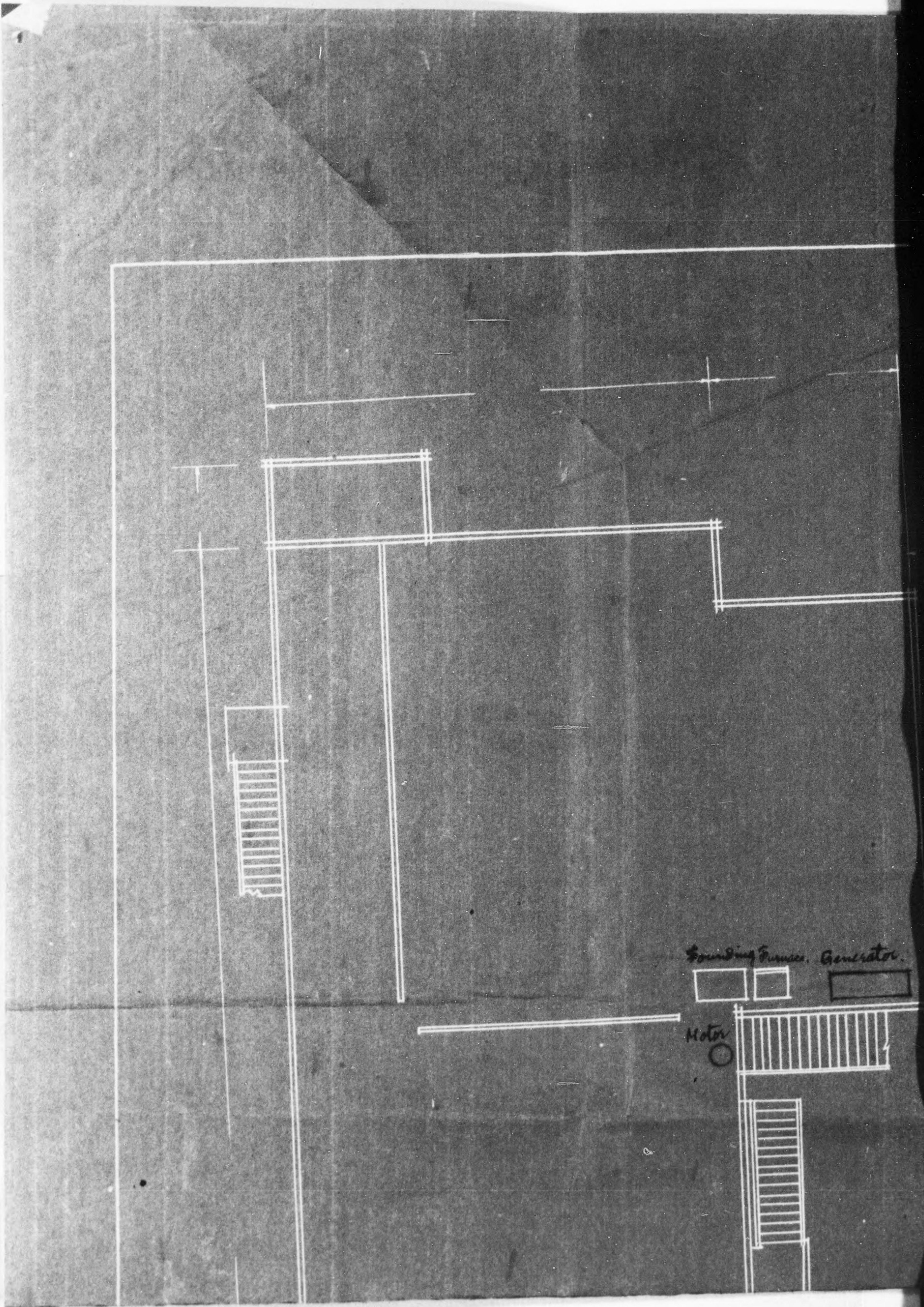
Morizo Industrial Co. Ltd.
(Morizo Sangyo KK.)

Bamba cho. ←

Nishimachi Station

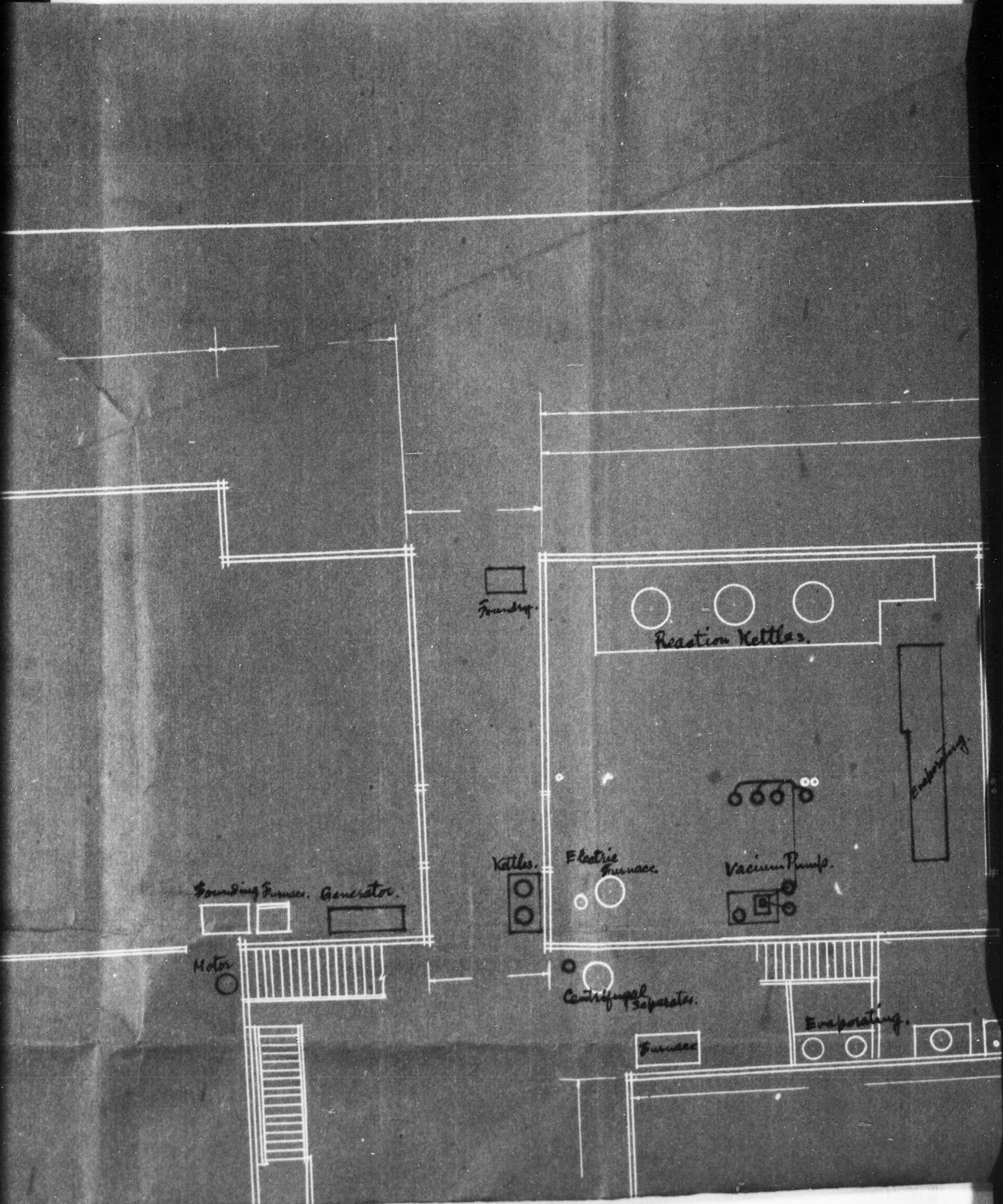
Tramway

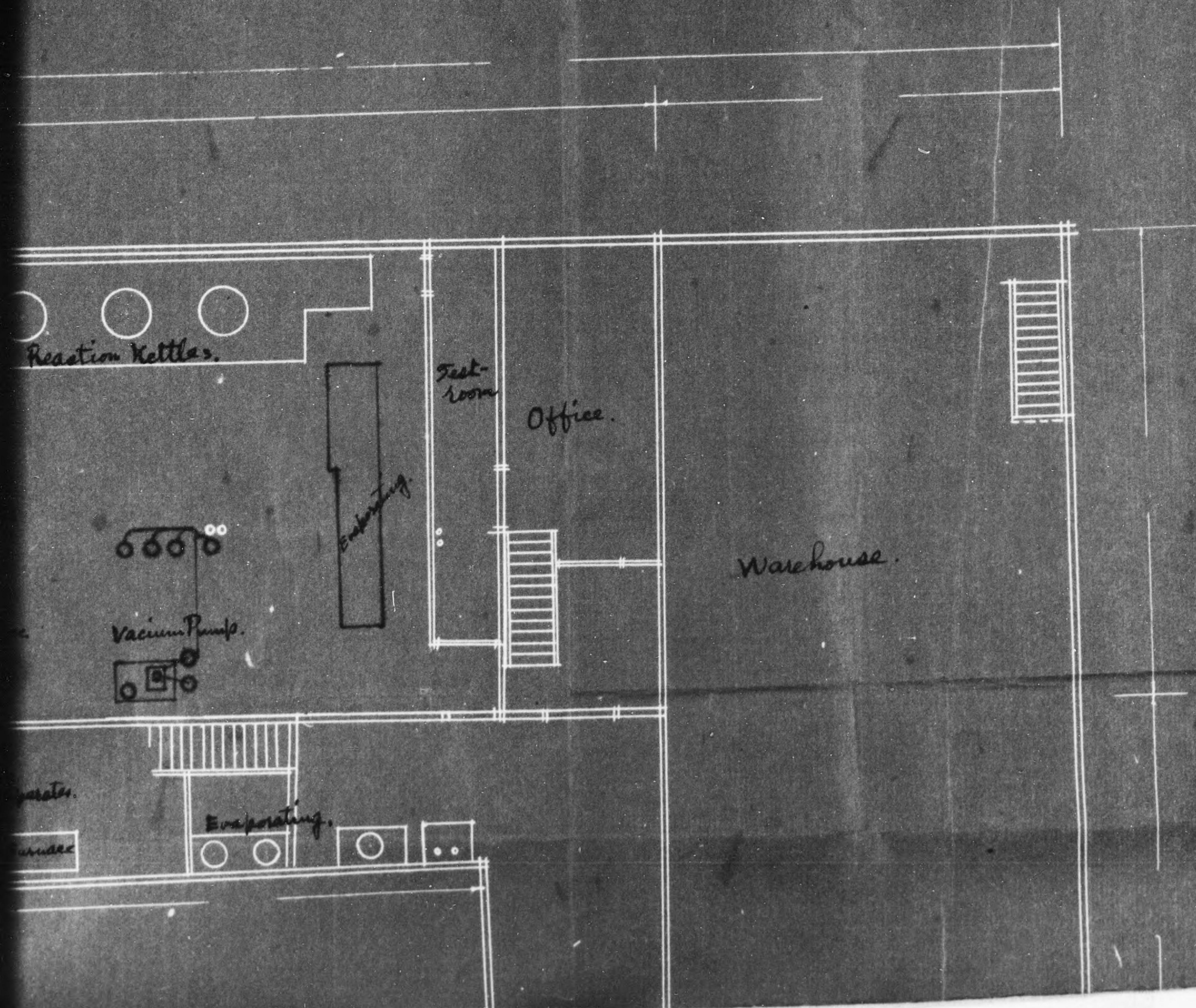


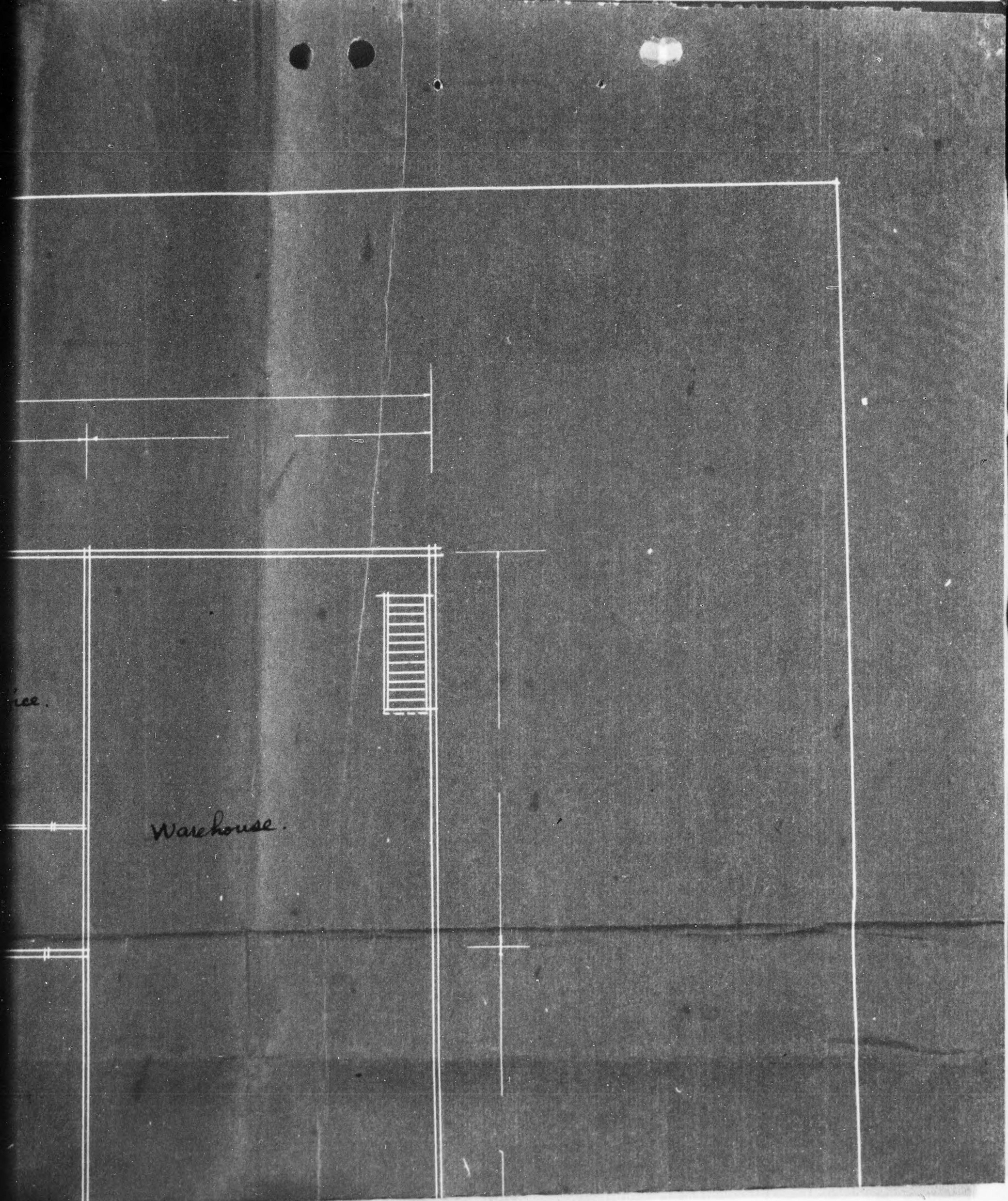


Sounding Furnace. Generator.

Motor







Warehouse.

ice.

