

LIBRARY OF THE
JOHN G. JOHNSON COLLECTION
CITY OF PHILADELPHIA

ON FREE PUBLIC VIEW
AT THE AMERICAN ART GALLERIES
MADISON SQUARE SOUTH, NEW YORK

BEGINNING FRIDAY, FEBRUARY 9th, 1917
FROM 9 A.M. UNTIL 6 P.M.

AND CONTINUING UNTIL NOON OF THE DATE OF SALE
(SUNDAY EXCEPTED)

THE VERY NOTABLE
DR. ALEXANDER C. HUMPHREYS
COLLECTION

TO BE SOLD AT UNRESTRICTED PUBLIC SALE
ON THE EVENINGS OF
WEDNESDAY AND THURSDAY, FEBRUARY 14th AND 15th
IN THE GRAND BALLROOM OF
THE HOTEL PLAZA
FIFTH AVENUE, 58th TO 59th STREET

BEGINNING EACH EVENING PROMPTLY AT 8.15 O'CLOCK

ILLUSTRATED CATALOGUE
OF
THE VERY NOTABLE COLLECTION
OF
AMERICAN PAINTINGS

FORMED DURING THE PAST TWENTY-FIVE YEARS BY

DR. ALEXANDER C. HUMPHREYS
PRESIDENT OF STEVENS INSTITUTE

THE ENTIRE COLLECTION TO BE SOLD
AT UNRESTRICTED PUBLIC SALE
ON THE EVENINGS HEREIN STATED
IN THE GRAND BALLROOM OF
THE HOTEL PLAZA

CATALOGUE WRITTEN BY WILLIAM A. COFFIN, N.A.

THE SALE WILL BE CONDUCTED BY
MR. THOMAS E. KIRBY
AND HIS ASSISTANT, MR. OTTO BERNET, OF THE
AMERICAN ART ASSOCIATION, MANAGERS
MADISON SQUARE SOUTH
NEW YORK



THE AMERICAN ART ASSOCIATION
DESIGNS ITS CATALOGUES AND DIRECTS
ALL DETAILS OF ILLUSTRATION
TEXT AND TYPOGRAPHY

CONDITIONS OF SALE

1. **Any bid** which is merely a nominal or fractional advance may be rejected by the auctioneer, if, in his judgment, such bid would be likely to affect the sale injuriously.

2. **The highest bidder** shall be the buyer, and if any dispute arise between two or more bidders, the auctioneer shall either decide the same or put up for re-sale the lot so in dispute.

3. **Payment** shall be made of all or such part of the purchase money as may be required, and the names and addresses of the purchasers shall be given immediately on the sale of every lot, in default of which the lot so purchased shall be immediately put up again and re-sold.

Payment of that part of the purchase money not made at the time of sale shall be made within ten days thereafter, in default of which the undersigned may either continue to hold the lots at the risk of the purchaser and take such action as may be necessary for the enforcement of the sale, or may at public or private sale, and without other than this notice, re-sell the lots for the benefit of such purchaser, and the deficiency (if any) arising from such re-sale shall be a charge against such purchaser.

4. **Delivery** of any purchase will be made only upon payment of the total amount due for all purchases at the sale.

Deliveries will be made on sales days between the hours of 9 A. M. and 1 P. M., and on other days—except holidays—between the hours of 9 A. M. and 5 P. M.

Delivery of any purchase will be made only at the American Art Galleries, or other place of sale, as the case may be, and only on presenting the bill of purchase.

Delivery may be made, at the discretion of the Association, of any purchase during the session of the sale at which it was sold.

5. **Shipping, boxing or wrapping** of purchases is a business in which the Association is in no wise engaged, and will not be performed

by the Association for purchasers. The Association will, however, afford to purchasers every facility for employing at current and reasonable rates carriers and packers; doing so, however, without any assumption of responsibility on its part for the acts and charges of the parties engaged for such service.

6. **Storage** of any purchase shall be at the sole risk of the purchaser. Title passes upon the fall of the auctioneer's hammer, and thereafter, while the Association will exercise due caution in caring for and delivering such purchase, it will not hold itself responsible if such purchase be lost, stolen, damaged or destroyed.

Storage charges will be made upon all purchases not removed within ten days from the date of the sale thereof.

7. **Guarantee** is not made either by the owner or the Association of the correctness of the description, genuineness or authenticity of any lot, and no sale will be set aside on account of any incorrectness, error of cataloguing, or any imperfection not noted. Every lot is on public exhibition one or more days prior to its sale, after which it is sold "as is" and without recourse.

The Association exercises great care to catalogue every lot correctly, and will give consideration to the opinion of any trustworthy expert to the effect that any lot has been incorrectly catalogued, and, in its judgment, may either sell the lot as catalogued or make mention of the opinion of such expert, who thereby would become responsible for such damage as might result were his opinion without proper foundation.

AMERICAN ART ASSOCIATION,
American Art Galleries,
Madison Square South,
New York City.

CATALOGUE

FIRST EVENING'S SALE

WEDNESDAY, FEBRUARY 14, 1917

IN THE GRAND BALLROOM OF THE PLAZA

FIFTH AVENUE, 58TH TO 59TH STREET

BEGINNING PROMPTLY AT 8.15 O'CLOCK

Nos. 1 to 83, inclusive

No. 1

HENRY MOSLER

AMERICAN: 1841—

GOOD-NIGHT

Height, 12 inches; width, 9 inches

32) [—]
HALF-LENGTH picture of a child in night-robe and cap, in full view to the spectator; the face lighted by a candle, the flame of which is shielded by the child's left hand.

Signed at the lower left, and dated PARIS, 1893.

No. 2

FREDERICK BALLARD WILLIAMS, N.A.

AMERICAN: 1871—

34) [—]
THE QUIET HOUR

Height, 12 inches; width, 9 $\frac{1}{4}$ inches

A GROUP of three young women with gowns and draperies of white, yellow, blue and dark red. The one farthest away from the spectator is playing on a lute. Background of foliage and sky.

Signed at the lower right.

Purchased direct from the artist, 1907.



No. 3

290

STEPHEN PARRISH

AMERICAN: 1846—

MARKET-PLACE, YVETÔT, NORMANDY

Height, 9 inches; length, 12 $\frac{3}{4}$ inches

THE market-place with a fountain, which appears in the left center of the picture, occupies the foreground and is bordered with buildings, including a church. The effect depicted is one of late afternoon, all the foreground and middle distance being in shadow, while sunlight illumines the upper part of the red walls of the church and catches here and there a bit of wall or a chimney. Numerous figures—buyers and vendors, a priest and others—animate the scene.

Signed at the lower right.

No. 4

RALPH ALBERT BLAKELOCK, N.A.

AMERICAN: 1847—

SUMMER—CATSKILLS

151

Millboard: Height, 7 inches; width, 4½ inches

A LITTLE stream trickles over rocks in the center of the foreground, on the left a tree with its foliage stretching up near the top of the canvas, and on the right a mountainside. Beyond is seen a patch of bluish sky.

Signed at the lower right.

On back, inscribed in red: "Summer, Catskills, R. A. BLAKELOCK."

Frederick S. Gibbs Collection, New York, 1904, Catalogue No. 10.

No. 5

CHILDE HASSAM, N.A.

AMERICAN: 1859—

MESSENGER BOY

380

Height, 16 inches; width, 12 inches

ONE of the artist's street scenes, which rank among the best of his works, showing the snow-covered sidewalks and roadway of a street in New York. Several cabs, a street piano, pulled along the roadway by a man and a woman, a man with a pushcart and a few pedestrians enliven the scene while, in the immediate foreground, at a corner, a messenger boy trudges along in pursuit of his errand.

Signed at the lower left, and dated 1901.

No. 6

471
LOUIS LOEB, N.A.

AMERICAN: 1866—1909

BYBLIS

Panel: Height, 16 inches; width, 10 inches

A SEATED figure of a young woman, in side view, nude to the hips and with draperies below of white and dark green. Leaning on a rock, her head is pillowed on her arm, and following the legend by which the nymph Byblis is said to have been changed into a spring, a little water is seen trickling over the rock. A representative example of the work of a talented artist, notable, among other qualities for its excellent drawing and atmospheric envelope as well as harmonious color.

Signed at the lower right, and dated 1903.



175
No. 7

BRUCE CRANE, N.A.

AMERICAN: 1857—

EVENING

Height, 11 inches; length, 14 inches

THE foreground consists of meadows and a pool; trees are spaced across the composition in the middle distance; a house appears amid the foliage on the left, and beyond is a range of hills. The evening sky shows, in its lower portion, a luminous effect of warm white, mingled with pale blue. In the upper portion are warmer tints, verging on orange, where clouds are floating.

Signed at the lower right.



No. 8

1660
J. FRANCIS MURPHY, N.A.

AMERICAN: 1853—

EARLY AUTUMN

Height, 10 inches; length, 14 inches

A PLEASING composition, including meadows and trees, a pond and a white cottage. The foliage of the trees, in part green and in part of russet hue, is soberly toned, and a gray sky with glimpses of blue accords with the other elements of the picture.

Signed at the lower left, and dated '05.

Frederick S. Gibbs Collection, New York, 1904, Catalogue No. 136.





No. 9

THOMAS EAKINS, N.A.

AMERICAN: 1844—1916

PROFESSIONALS AT REHEARSAL

Height, 16 inches; width, 12 inches

ONE of the most celebrated of all of Eakins's genre pictures. It shows a group of two seated figures; one a man with white shirt, playing the zither which is on a table before him, and his companion on the left of the table, somewhat farther away, playing a guitar. The light is concentrated on the most prominent figure, lighting up the head, the hands and the shirt.

Signed at the upper left.

Thomas B. Clarke Collection, New York, 1899, Catalogue No. 342.

657

No. 10

HENRY GOLDEN DEARTH, N.A.

AMERICAN: 1864—

PASSING OF THE WAVE

450

Panel: Height, 13 inches; length, 16 inches

A PICTURE of the sea, with rocks in the foreground, over which the water is tumbling and surging, breaking into white foam. Beyond lies the blue-green expanse of the ocean with breakers running in, crowned with white. At the top of the picture is a strip of gray sky. The color quality of this picture gives it a distinctive charm.

Signed at the lower left.

Purchased direct from the artist, New York, 1912.

No. 11

CHILDE HASSAM, N.A.

AMERICAN: 1859—

ACROSS THE PARK

325

Millboard: Height, 14½ inches; length, 21½ inches

A VIEW of the upper part of New York, seen across Central Park. Slender trees, with some autumn foliage still clinging to their branches, and snow-covered roads with hansom cabs driving along, occupy the lower part of the picture. Beyond are the buildings and towers of the city, illumined by the last rays of the setting sun, and above is a space of evening sky with the full moon rising through the haze.

Signed at the lower left, and dated 1905.

Purchased from William Macbeth, New York, 1907.

No. 12

HORATIO WALKER, N.A.

AMERICAN: 1858—

THE END OF THE DAY

Water Color: Height, 12 inches; length, 17 inches

A BOY with a blue jacket is seen standing by the doorway of a stable, while a horse whose day's work is over is entering to rest for the night. This group, and the stable with its thatched roof, occupy the left half of the picture, and on the right is a view of green fields with the sun sinking below the horizon.

Signed at the lower left.

Purchased from William Macbeth, New York, 1904.

100



No. 13

CARLTON T. CHAPMAN, N.A.

AMERICAN: 1860—

THE LIGHTHOUSE

Height, 14 inches; length, 22 inches

THE ocean's surging waters occupy the foreground and on the left, in the middle distance, is a headland crowned by a lighthouse. Several vessels are seen offshore with port and starboard lights of green and red, and above is a dark sky of evening. The signal light spreads abroad its rays, which are reflected in the water, and contrasts with the general blue-gray tone of the rest of the picture.

Signed at the lower left.

Thomas B. Clarke Collection, New York, 1899, Catalogue No. 264.





No. 14

52
CARLETON WIGGINS, N.A.

AMERICAN: 1848—

THE STORM

Height, 13 inches; length, 16 inches

SHEEP are seen browsing in the middle portion of the picture, which is illuminated by a gleam of sunlight, while farther away a belt of trees and distant fields lie in shadow from the clouds of a gathering storm.

Signed at the lower left.

Purchased from William Macbeth, New York, 1902.

No. 15

CHARLES WEBSTER HAWTHORNE, N.A.

AMERICAN: 1872—

ALONG THE RIVER

Panel: Height, 17½ inches; length, 19½ inches

257

FROM the left foreground a quay extends into the middle portion of the picture, with a wide expanse of river on the right. Houses line the quay, a sailing vessel is moored near the center of the composition, and beyond, at the right, on the farther shore, are buildings, including one with a dome. Overhead is a sky of blue with masses of white clouds.

Signed at the lower left.

Purchased direct from the artist, 1908.

No. 16

CHARLES HAROLD DAVIS, N.A.

AMERICAN: 1856—

SUNSET ON THE MOOR

Height, 15 inches; length, 21½ inches

475

THE lower part of the picture is occupied by a level plain and a winding stream. At the horizon is a line of trees. The sky, with tinted clouds in the upper portion, shows warm yellow and pink below, and here and there is a space of blue.

Signed at the lower left.

Thomas B. Clarke Collection, New York, 1899, Catalogue No. 14.

No. 17

R. SWAIN GIFFORD, N.A.

AMERICAN: 1840—1905

SOLITUDE

Height, 14 inches; length, 23 inches

A PICTURE of quiet general tone, showing stretches of beach and an inlet, in the foreground. The middle distance presents a strip of country, rising somewhat steeply, and above is an evening sky, just after sunset, showing great cloud masses, illumined, in the right center of the composition, with warm white and pink.

Signed at the lower left.

Purchased from William Macbeth, New York, 1905.



No. 18

ALEXANDER H. WYANT, N.A.

AMERICAN: 1836—1892

A GRAY DAY

Height, 14 inches; length, 22 inches

A LANDSCAPE with the simple elements of a meadow and a little pool in the foreground, a tree in the middle portion and some bushes and underbrush crossing the canvas beyond. The sky is filled with gray clouds, some of them illumined, from the right, by pale sunlight. The general aspect of the picture exhibits the unobtrusive quality of Wyant's pastoral scenes.

Signed at the lower left.

Purchased from William Macbeth, New York, 1902.

2608



No. 19

HENRY GOLDEN DEARTH, N.A.

AMERICAN: 1864—

GRAY WEATHER

Panel: Height, 12½ inches; length, 16 inches

A MARINE of charming color quality, showing a rock in the middle foreground with the waters swirling around it. Beyond lies the ocean, with a strip of sky at the top of the picture. The color scheme shows notes of blue, green, white and violet, all consistently unified.

Signed at the lower right.

Purchased direct from the artist, 1912.

352

No. 20

HOMER D. MARTIN, N.A.

AMERICAN: 1836—1897

LOW TIDE—HONFLEUR

Height, 15 inches; length, 24 inches

A SANDY beach occupies the foreground, with a thatched hut, near the middle of picture, and a line of blue hills beyond. The sea has apparently run out of a narrow channel at the base of the hills. Overhead is a sky of gray.

Signed at the lower left.

Purchased from Wm. Macbeth, February, 1907. Mr. Macbeth purchased the picture from Mrs. Agnes Farley, 16 Rue de la Paix, Paris, to whom the picture was presented by Homer Martin about the time it was painted. Letter from Mrs. Farley and a certificate by Wm. Macbeth confirming these facts will be presented to the purchaser.

3000

No. 21

ALEXANDER H. WYANT, N.A.

AMERICAN: 1836—1892

KILLARNEY

Height, 12 inches; length, 20 inches

A WYANT of his earlier period, remarkable for its mellow tint and unity. The Lake is seen lying amid the hills in the middle portion of the picture, while in the foreground there is an eminence denuded of the herbage which covers all the rest of the ground. Above a mass of gray clouds, quite dark at the horizon, appears the high peak of a distant hill.

Signed at the lower left, and dated 1867.

Purchased from Mrs. A. H. Wyant, 1902.

500

No. 22

RICHARD PAULI

AMERICAN: 1855—1892

A GRAY DAY

Panel: Height, 16 inches; length, 24 inches

A LANDSCAPE in greens and varied grays, the elements of the picture being level meadows, clumps of trees and greensward, in the foreground and middle distance. Beyond is a belt of trees and above is a sky of clouds, breaking up after a shower.

Signed at the lower right.

G. Harrison Collection, New York.

185

340
No. 23

JULIAN RIX

AMERICAN: 1851—1903

THE QUARRY

Height, 16 inches; length, 23 inches

AN autumn effect in sunlight with foreground of grass, herbage and rocks. A tree, with dark foliage, near the middle of the composition, with a strong note of white where the sun illuminates its trunk, gives a keynote amid the foliage masses of warm color on other trees, both near and far away. Overhead is a sky of puissant blue flecked with many clouds.

Signed at the lower right, and dated '98.





No. 24

WILLIAM SARTAIN, A.N.A.

AMERICAN: 1843—

150
ITALIENNE

Height, 18 inches; width, 15 inches

A LIFE-SIZE head in profile, to the left, of an Italian girl with black hair and a head-dress of yellow. The shoulders are covered by a white waist and kerchief.

Signed at the lower right.

Purchased from William Macbeth, 1905.

No. 25

WILLIAM MORRIS HUNT

AMERICAN: 1824—1879

HEAD OF A SPANISH GIRL

Height, 24 inches; width, 18 inches

A HEAD and bust picture of a young woman, in profile view to the right, wearing a headdress of red and yellow and a white bodice. The head inclines slightly forward and is modeled with simplicity.

Signed with monogram, at center right.

Mrs. Susan D. Warren Collection, New York, 1903, Catalogue No. 82.

Purchased from William Macbeth, New York, 1905.

1100

No. 26

FRANK KNOX MORTON REHN, N.A.

AMERICAN: 1848—1915

IN MID-OCEAN

Height, 16 inches; length, 24 inches

A NIGHT effect at sea with the full moon, which has risen well above the horizon, casting its light on the tumbling waves. In the offing, in the right center on the horizon, a steamer is seen making its way along with smoke pouring from the funnel. The moon is placed in the middle of the upper part of the sky, and the reflection of the light on the waters occupies the middle portion of the picture.

Signed at the lower right.

275

No. 27

ALEXANDER H. WYANT, N.A.

AMERICAN: 1836—1892

COUNTY KERRY, IRELAND

Height, 15 inches; length, 22½ inches

THIS landscape presents a view amid the hills of Ireland and belongs to a series of pictures painted by Wyant during his visit to that country in the early sixties. In the foreground is a bit of water with boulders scattered about, and a road leading through the valley into the gaps between the hills beyond. Overhead is a sky of broken gray clouds.

Signed at the lower right, and dated 1866.

Purchased from Edward C. Stedman, New York, 1905.



No. 28

FREDERICK BALLARD WILLIAMS, N.A.

AMERICAN: 1871—

✓ d
g
VALLEY OF THE PASSAIC

Height, 16 inches; length, 24 inches

A LANDSCAPE in September effects, in which the chief elements are a tree, in the left foreground, with foliage of tawny yellow and brown, rocky hills in the middle distance and a view of the valley on the right. The sky is of qualified blue with white and gray clouds.

Signed at the lower right.

Purchased direct from the artist, 1907.





No. 29

WORTHINGTON WHITTREDGE, N.A.

AMERICAN: 1820—1910

A VILLAGE BY THE SEA

Height, 15 inches; length, 22 inches

A LANDSCAPE especially notable for its beautiful drawing and firm construction. The view, from high ground, overlooks the houses, gardens and trees of a village, and farther away lie flat beaches, beyond which is seen the blue sea with the waves breaking into lines of white surf as they roll slowly in to shore. Overhead is a somewhat misty summer sky of pale blue with warm-tinted white clouds. The entire landscape is bathed in pleasant sunshine.

Signed at the lower right.

Thomas B. Clarke Collection, New York, 1899, Catalogue No. 321.

400



No. 30

GEORGE HENRY SMILLIE, N.A. ²⁵

AMERICAN: 1840—

AT EAST GLOUCESTER

Height, 16 inches; length, 24 inches

A SHORE view on a fine autumn day. Clumps of bushes and herbage, rocks, marshes and a pool, filling the foreground, are depicted with a variety of gay tints, and the sea lies beyond, reflecting on its calm surface a sky of delicate white-gray clouds with a space of blue at the right.

Signed at the lower left, and dated 1899.

Purchased at the National Academy of Design, 1899, Catalogue No. 189.



No. 31

FREDERICK S. CHURCH, N.A.

AMERICAN: 1842—

210
SPRING SONG

Height, 24 inches; width, 12 inches

A FULL-LENGTH figure of a young girl with auburn hair, the head uplifted and seen in profile view, standing near an apple tree in blossom. Light tints of green and pink form a pleasing contrast in the ensemble to the gray and white of the maiden's Puritan costume.

Signed at the lower right, dated '96, and COPYRIGHT.

William T. Evans Collection, New York, 1900, Catalogue No. 27.

No. 32

HENRY GOLDEN DEARTH, N.A. 450

AMERICAN: 1864—

BRITTANY COAST

Panel: Height, 18 inches; length, 21½ inches

IN the foreground, both on the right and left, are rocky formations, rather square and regular in shape, forming a channel through which the sea is rushing and breaking into white foam, while water also dribbles over the rocks. In the upper half of the picture appears the wide expanse of the ocean, green tempered with lilac. At the top of the canvas is a headland and a narrow strip of sky.

Signed at the lower right.

Purchased direct from the artist, New York, 1912.

No. 33

CHARLES WEBSTER HAWTHORNE, N.A.

AMERICAN: 1872—

THE GRAND CANAL—VENICE

Panel: Height, 20 inches; width, 17¼ inches

A VIEW looking through the Canal with buildings on either side. The sky, of tempered blue with some white cloud masses, is reflected, in lower values, in the water.

Signed at the lower left.

Purchased direct from the artist, New York, 1908.

22

No. 34

JULIAN RIX

AMERICAN: 1851—1903

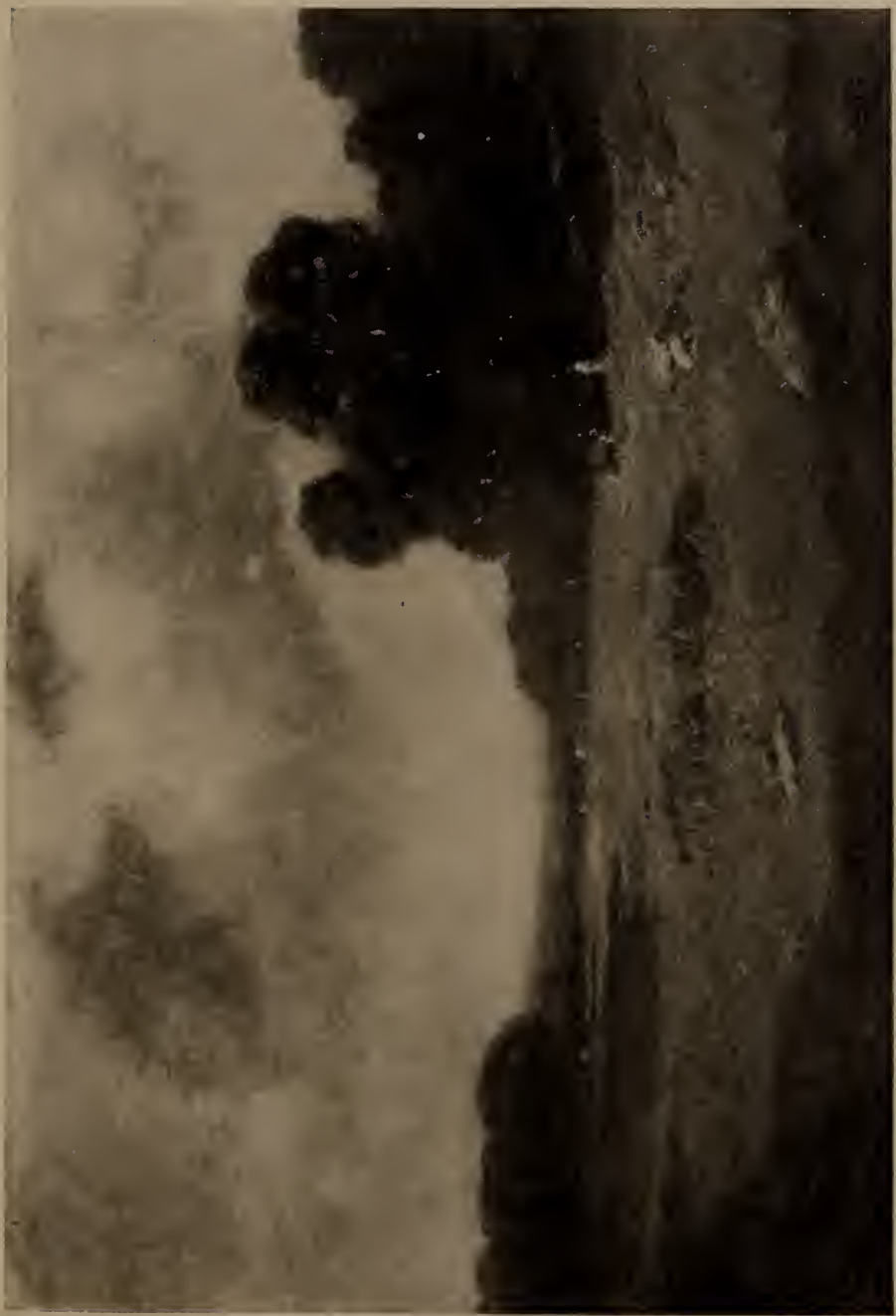
SINGAC MEADOWS

Height, 16 inches; length, 24 inches

A LANDSCAPE of midsummer effects, with green meadows occupying the foreground and groups of full-foliaged trees on both the right and left. In the distance is a vista of diversified country, and overhead a blue sky with masses of warm-tinted white clouds. The central portion of the picture is brought into relief by heavy shadows across the foreground.

Signed at the lower right.

Purchased direct from the artist, 1899.



No. 35

WILLIAM HENRY HOWE, N.A.

AMERICAN:

ON THE MARSHES—HOLLAND

Height, 18½ inches; length, 23½ inches

33)
A GROUP of cattle, two standing and others lying down in a flat pasture, through which passes a narrow stream. A belt of trees is seen in the middle distance, and beyond appear a windmill and line of hills. The gray sky shows a space of blue in the upper left portion. The cows are white, spotted, and red and black.

Signed at the lower left, and dated '98.

No. 36

GEORGE HITCHCOCK, A.N.A.

AMERICAN: 1850—1913

WINDMILL AND GEESE

Height, 23 inches; width, 17¾ inches

9 1/2)
A HOLLAND landscape, with a plain covered with coarse grass and herbage of various kinds occupying more than half of the canvas, across which a flock of geese is making its way toward a mill and stone bridge, in the distance. Still farther away appear a spire and roofs indicating a town on the horizon. Overhead is a sky of gray.

Signed at the lower left.

Boussod, Valadon & Co. Collection, New York, 1902, Catalogue No. 141.

No. 37

WILLIAM SARTAIN, A.N.A.

AMERICAN: 1843—

ARAB CAMP—OUTSIDE THE WALLS

Height, 18 inches; length, 24 inches

A LOW-TONE picture with forceful coloring, depicting three Arabs, clothed in white, seated on the ground in the middle center of the composition. Behind them a white wall runs across the canvas and there are two tents on the right. Over the wall appear a grove of trees and spaces of blue sky. The light is concentrated on the figures and the central portion of the wall.

Signed at the lower right.

Purchased from William Macbeth, New York, 1905.

No. 38

FREDERICK S. CHURCH, N.A.

AMERICAN: 1842—

A SURF PHANTOM

Height, 20 inches; length, 24 inches

A FANTASY, representing a sea nymph with heavy blond hair, riding in the surf, which, as it whirls upward in a breaker, assumes a resemblance to a white steed.

Signed at the lower right, and dated N. Y. '85.

Thomas B. Clarke Collection, New York, 1899, Catalogue No. 31.

No. 39

FRANK KNOX MORTON REHN, N.A.

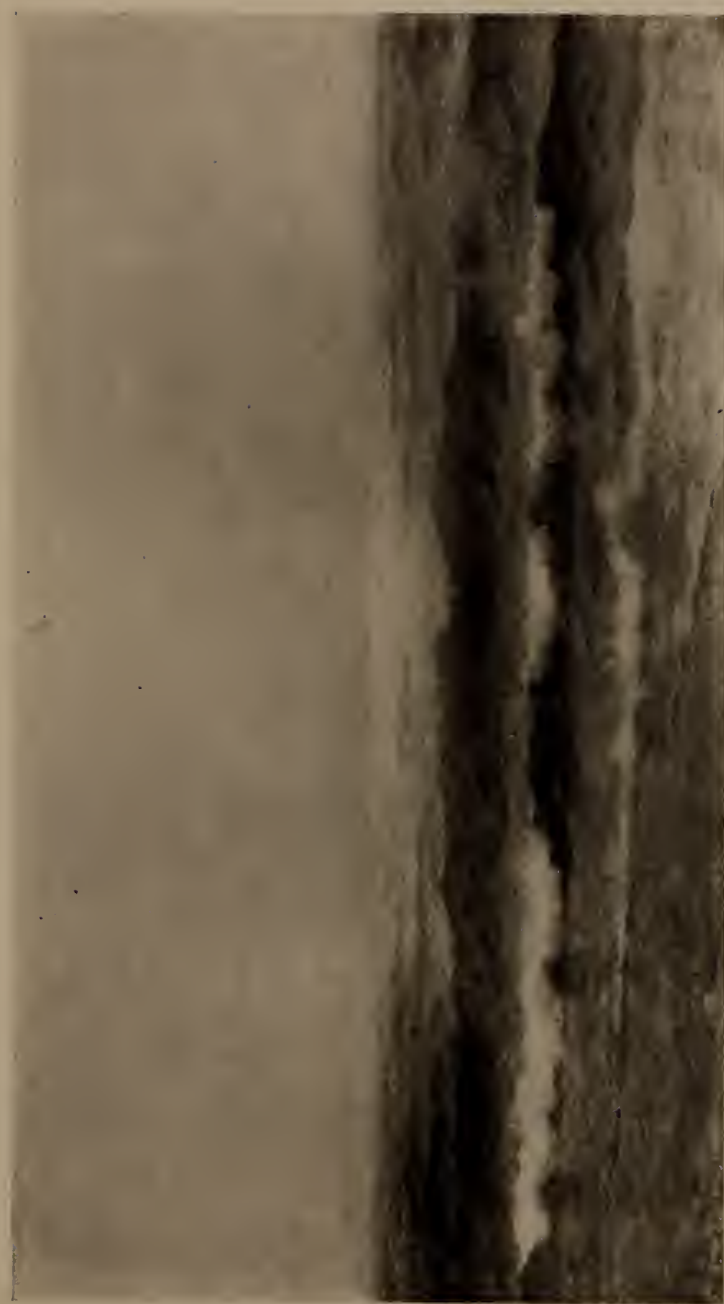
AMERICAN: 1848—1915

25
MARINE

Height, 16 inches; length, 28 inches

BREAKERS are rolling in-shore in the foreground, spreading out and covering the beach, while the expanse of the ocean fills the middle distance and is illuminated by light falling from the sun, which is above and out of the picture. A white sail or two catch the light on the horizon.

Signed at the lower left, and dated '91.



No. 40

CHILDE HASSAM, N.A.

AMERICAN: 1859—

ON THE AVENUE IN WINTER

Height, 24 inches; width, 22 inches

AN example of the artist's city scenes in winter, showing a street, with a figure of a lady on the sidewalk in the foreground; other pedestrians beyond and, in the roadway, a number of cabs. The effect shows melting snow which has not yet been cleared away.

Signed at the lower right, and dated 1905.



No. 41

CHARLOTTE BUELL COMAN, A.N.A.

AMERICAN: CONTEMPORARY

160
IN THE FALL OF THE YEAR

Height, 27 inches; width, 22½ inches

A QUIET, restful landscape, showing a view of a broad valley from heights in the foreground, where a group of trees in autumn foliage and one or two buildings are seen. The vista beyond covers fields and belts of timber, extending to a line of distant hills near the top of the canvas, where there is a space of gray sky.

Signed at the lower left.

Purchased from William Macbeth, New York, 1908.

No. 42

HENRY GOLDEN DEARTH, N.A.

AMERICAN: 1864—

371
ANEMONE POOL

Panel: Height, 18 inches; length, 21½ inches

A COLOR arrangement, belonging in the artist's so-called "Pool Series." The picture shows a sort of square basin amid the rocks on the seashore, filled with water and not only reflecting objects on shore, but also showing in places the bed of the pool. At the upper right of the canvas appears a stretch of the ocean with a headland and strip of sky.

Signed at the lower left.

Purchased direct from the artist, New York, 1912.

No. 43

CHARLES HAROLD DAVIS, N.A.

AMERICAN: 1856—

SUMMER CLOUDS

Height, 20 inches; length, 27 inches

A LANDSCAPE composed of the simple elements of a plain, with a line of hills in the distance, and a spacious sky. The greater part of the plain, occupying not only the foreground but a portion of the middle distance, is in shadow. Just at the farther edge appear a few hillocks and trees, and in the shadowed portion itself is a flock of sheep with its shepherd. A high sky is filled with masses of clouds floating in the blue. It is because of the sun being behind one of these large clouds that the whole foreground and part of the middle distance are in shadow.

Signed at the lower left.

37

No. 44

GEORGE INNESS, JR., N.A.

AMERICAN: 1854—

IN THE COOL OF THE EVENING

Height, 21 $\frac{1}{4}$ inches; length, 25 $\frac{3}{4}$ inches

THE composition shows a group of cattle and some sheep, in a setting of pasture, on the edge of a dense forest. The light is concentrated on the animals, while the rest of the picture is subdued to lower tones.

Signed at the lower right.

62

No. 45

HENRY WARD RANGER, N.A.

AMERICAN: 1858—1916

SPRING—EAST LYME

Height, 18 inches; length, 25½ inches

900
700
A BRIGHT, sunny spring landscape with a river crossing the foreground. A fisherman in his boat at the nearer shore, trees, a white house and some cows on the opposite bank are other features of the composition. In the sky of blue are warm-tinted white cumulus clouds.

Signed at the lower left, and dated '99.

Purchased from Arthur Tooth & Sons, New York, 1899.

No. 46

WILLIAM SARTAIN, A.N.A.

AMERICAN: 1843—

900
800
700
600
500
THE CLOUD

Height, 20 inches; length, 24 inches

ABOVE a foreground of salt marshes and an inlet of the sea is a wide expanse of sky with a great mass of cloud, the upper portion lighted by the sun. Beneath it are wind-swept forms of gray; in the upper right of the canvas, a bit of blue.

Signed at the lower right.

Purchased from William Macbeth, New York, 1903.

No. 47

WILLIAM MORRIS HUNT

AMERICAN: 1824—1879

OLD MEXICO

Height, 20 inches; length, 27 inches

THREE horsemen are seen passing across a sandy foreground. On the left is an eminence crowned by a shrine; on the right, a low building with white walls; hills in the distance.

Purchased from William Macbeth, New York, 1906.

~~900~~
425

No. 48

JULIAN RIX

AMERICAN: 1851—1903

EDGE OF THE WOOD


Height, 21½ inches; length, 28 inches

THE view in this landscape is taken from within the woods and presents, in the distance, a glimpse of forest and hills. The sombre masses of the wood interior are relieved by the white trunk of a beech tree, which is seen in the foreground.

Signed at the lower right, and dated 1899.

Purchased direct from the artist, New York, 1899.

~~520~~
450



No. 49

CHARLES COURTNEY CURRAN, N.A.

AMERICAN: 1861—

GIRL WITH VIOLIN

Height, 36 inches; width, 16¼ inches

A FULL-LENGTH standing figure of a young woman, in low-neck gown of wine color, seen in full face view, the head inclined to right, as she plays her violin and with her right hand draws the bow down to the end. The figure is illuminated by light coming from the left and the color scheme shows warm tones throughout.

Signed at the lower right, dated 1905, and COPYRIGHT.

Purchased direct from the artist, New York, 1905.



No. 50

THOMAS MORAN, N.A.

AMERICAN: 1837—

A VENETIAN FIESTA

Height, 20 inches; length, 30 inches

THE familiar setting for pictures of Venice is shown in this picture, consisting of the Doges' Palace, the Campanile, Santa Lucia, and other buildings in the middle distance. In the foreground on the left is a mass of vessels of all kinds, huddled together and showing bright tints of color in the sails, pennants, and other features. A sky of blue, with white clouds, is reflected in the wide expanse of water.

Signed at the lower left, and dated 1899.

Purchased at the National Academy of Design, New York, 1899.

1600



No. 51

110 J
HENRY WARD RANGER, N.A.

AMERICAN: 1858—1916

VALLEY OF THE SOMME

Height, 18 inches; length, 26 inches

A MILL stream is seen in the right foreground with thatch-roofed cottages on the bank; in the left foreground, a level plain. In the middle distance are groups of trees with high, stem-like trunks and foliage in the upper part of the picture. Beyond is a glimpse of hills and trees. The sky of warm, light gray clouds shows some spaces of blue and the whole makes a composition of balanced masses of light and dark.

Signed at the lower left, and dated '96.

Purchased from William Macbeth, New York, 1905.



No. 52

410
WILLIAM HENRY HOWE, N.A.

AMERICAN: 1846—

YOUNG VAGABONDS

Height, 24 inches; length, 30 inches

SEVERAL young steers, in advance of a herd, are depicted, facing the spectator with direct gaze, in a roadway which leads through sloping pasture lands. Sunlight, from the right, emphasizes the color of their coats of reddish brown, white and black. Overhead is a sombre sky with clouds gathered for a summer shower.

Signed at the lower left, and dated '99.

Purchased direct from the artist, New York, 1900.



No. 53

170
WILL HOWE FOOTE, A.N.A.

AMERICAN: 1874—

THE OLD BRIDGE

Height, 26 inches; length, 32 inches

A PICTURE of serene general aspect showing an arching bridge, on high piers, spanning the waters of a placid river. The color scheme consists of quiet, sympathetic grays with a darker accent given by the reflection of the bridge in the water. From the left foreground, on the bank, two or three slender trees raise their trunks and branches to the top of the canvas.

Signed at the lower left, and dated 1902.

Purchased at the Society of American Artists, New York, 1902.



No. 54

REYNOLDS BEAL, N.A.

AMERICAN: 1867—

260 OFF NEW LONDON

Height, 24 inches; length, 36 inches

A YAWL is seen scudding along in the sea, in the foreground, and there is another sail in the offing. Beyond is a line of hills, dimly blue, marking the shore. Overhead is a high sky of cumulus clouds, gray and tinted white, with spaces of blue.

Signed at the lower right, and dated 1902.



No. 55

HUGH BOLTON JONES, N.A.

AMERICAN: 1848—

NEAR ORANGE, NEW JERSEY

Height, 24 inches; length, 36 inches

A PLACID stream flows through the foreground, on the right, with green pastures on either side. Across the middle distance is a belt of trees in late summer foliage showing here and there notes of yellow or brown. Above is a sky of pale blue with broken clouds of white.

Signed at the lower left.

Thomas B. Clarke Collection, 1899, Catalogue No. 57.



No. 56

WILLIAM SARTAIN, A.N.A.

AMERICAN: 1843—

400

AN ARAB SCHOOL IN ALGIERS

Height, 26 inches; length, 36 inches

In an alcove of an Oriental apartment with pillars and arches appears the seated form of an Arab teacher, gowned in black and wearing a white turban. Seated on the floor before him, with backs to the spectator, or standing nearby against the walls and pillars, are several youths, in costumes of blue, red, yellow, brown and white and fezzes of white, red or blue. This group of figures is depicted in the somewhat tenebrous lighting common to many Oriental interiors.

Signed at the lower right.

Purchased from William Macbeth, New York, 1904.



No. 57

THOMAS MORAN, N.A.

AMERICAN: 1837—

700
THE MOUNTAIN OF LOADSTONE

(*Arabian Nights*)

Height, 20 inches; length, 30 inches

A MARINE with the waves of the green ocean dashing against a rocky shore, on the right, and a mountain peak rising high above. The sun is depicted setting in a sky of red, yellow and other strong tints.

Signed at the lower left, and dated 1898.

Purchased at the National Academy of Design, New York, 1899.





No. 58

EDWARD H. POTTHAST, N.A.

AMERICAN: 1857—

OFF THE GRAND BANKS

Water Color: Height, 30 inches; width, 22 inches

A BEARDED sailor-man, with sou'wester and oilskins, is here depicted leaning on the gunwale of his vessel, the upper part of the figure being relieved against the high rolling masses of water which, by their shape and movement, truthfully represent the locality of the subject. From the sky above, but from outside of the picture, falls a gleam of pale sunlight in the trough of the great waves.

Signed at the lower left.

*Purchased at the American Water Color Society, New York, 1899,
Catalogue No. 272.*

No. 59

SAMUEL COLMAN, N.A.

AMERICAN: 1832—

SAW MILL RIVER

Height, 16 inches; length, 30 inches

A LANDSCAPE of peaceful aspect, in which the principal elements are a placid stream traversing the foreground, trees with spreading branches in the middle portion of the picture, and a wooded hillside bordering the valley. On the banks of the stream are cattle coming to drink and one or two figures. Above is a summer sky with masses of white clouds and here and there a space of blue.

Signed at the lower left, and dated 1868.

Purchased from John Snedecor's Sons, New York, 1899.

No. 60

ELLIOTT DAINGERFIELD, N.A.

AMERICAN: 1859—

THE DRAMA OF THE MOUNTAIN TOPS

Height, 30 inches; length, 36 inches

IN the immediate foreground, which represents the point of view for the picture, is a space of ground with rocks. Immediately beyond masses of white mist are seen, from which, in the middle of the composition, arise the dark peaks of a mountain range. Above, in the right upper half of the canvas, is a sky of blue with white clouds which is rapidly being shut out from view by a heavy shower, represented as descending straight from the heavens on the upper left of the picture.

Signed at the lower right.

Purchased direct from the artist, New York, 1906.



No. 61

ARTHUR PARTON, N.A.

AMERICAN: 1842—1914

THE PASSING SHOWER

Height, 18 inches; length, 30 $\frac{1}{4}$ inches

3
A RICHLY-TONED landscape in which the foreground is occupied by the smooth waters of a river. On the farther bank, in the middle distance, are hillocks and trees, while on the left beyond is a distant mountain range. The summer sky, with spaces of blue in the upper portion on the right and cumulus clouds below, shows on the left a mass of dark clouds, where a shower is passing over the mountain range. In the immediate foreground, on the left, are a skiff and figure.

Signed at the lower left.

Thomas B. Clarke Collection, New York, 1899, Catalogue No. 283.

No. 62

EDWARD H. POTTHAST, N.A.

AMERICAN: 1857—

THE VILLAGE CARPENTER

Height, 30 inches; length, 20 inches

THE carpenter, in his shirt-sleeves and blue working apron, is seen standing at his bench, working with chisel and hammer. Through the panes of a window and an open door, on the right, the view from his shop discloses a door-yard with the red brick wall of a house, vines and flowers. The values are well maintained in this interesting example of American genre painting and the effects of light are realistically rendered.

Signed at the lower left.

*Purchased at the National Academy of Design, New York, 1899,
Catalogue No. 29 or 35.*

No. 63

FREDERICK W. KOST, N.A.

AMERICAN: 1861—

THE DRIFTWOOD GATHERER

Height, 22 inches; length, 28 inches

IN the foreground, on a sandy hillock partly covered with herbage and overlooking the sea, a man is piling up pieces of driftwood which he has gathered along shore. The expanse of water in the middle portion of the picture and the gray sky above form a sympathetic harmony with the brownish-pink of the sand dune and its dull green herbage, the whole making a picture of unified effect.

Signed at the lower left.



No. 64

THOMAS MORAN, N.A.

AMERICAN:

IN THE TETON RANGE—IDAHO

Height, 42 inches; width, 30 inches

A DRAMATIC composition with a stream rushing swiftly downward over rocks in the foreground, and the range of mountains filling the upper part of the canvas with peaks covered with snow. A gleam of sunlight illumines a portion of the middle distance, where a pine tree grows at the side of the stream and sunshine also falls on the mountain tops. Over all, a space of blue sky with gray and white clouds.

Signed at the lower left, and dated 1899.

Purchased at the National Academy of Design, New York, 1899.

1271

No. 65

LOUIS PAUL DESSAR, N.A.

AMERICAN: 1867—

NOCTURNE—MOONRISE WITH SHEEP

Height, 18 inches; length, 36 inches

IN this pastoral scene a flock of sheep is depicted in the middle part of the composition, with the shepherd standing nearby, in the right foreground. On the left is a slightly rocky eminence, and overhead an evening sky with principal notes of blue and yellow. The moon, just above the horizon, already sheds sufficient light to accent the backs of the woolly flock.

Signed at the lower right, and dated 1906.

Purchased direct from the artist, 1907.

952

No. 66

HENRY WARD RANGER, N.A.

AMERICAN: 1858—1916

CLOUD AND SEA—PORTO RICO

Height, 36 inches; width, 28 inches

THE blue-green expanse of the sea occupies the lower part of the canvas, and above a low horizon rises a high sky, with a great white cloud in the central portion. Other smaller clouds, above and below, are seen, contrasting with open spaces of tempered blue.

Signed at the lower left, and dated 1905.

Purchased direct from the artist, New York, 1906.

771

No. 67

W. S. BUCKLIN

AMERICAN: 1851—

W.S.
EARLY SPRING MORNING

Water Color: Height, 30 inches; length, 40 inches

A MISTY landscape of springtime, depicted in pale tints. From a foreground, in which are a few slender trees, the eye passes over a stretch of country to a hillside, dimly seen beyond and showing a shimmering haze of pale blue. Above is a sky with clouds accented with white in the upper portions of their masses.

Signed at the lower right, and dated '99.



No. 68

HENRY GOLDEN DEARTH, N.A.

AMERICAN: 1864—

THROUGH THE BEECHES

Height, 35 inches; width, 20 inches

321
A COMPANY of people, ladies and escorts, all clad in brilliant costumes of many different hues, are seen descending a steep grassy slope lined on either side by beech trees in red, crimson and other tints of autumn foliage. In the upper part of the composition is a glimpse of blue sky with white clouds. The whole constitutes a fantasy in striking color effects.

Signed at the lower right.

Purchased direct from the artist, New York, 1910.

No. 69

HENRY WARD RANGER, N.A.

AMERICAN: 1858—1916

60
PEACEFUL MOONLIGHT REIGNS

Height, 36 inches; width, 28 inches

ABOVE a rugged landscape there is a high expanse of evening sky, in which a full moon is seen in the upper center. The landscape is bathed in its light and a few stars twinkle in the canopy.

Signed at the lower left, and dated 1904.

Purchased direct from the artist, New York, 1905.

No. 70

PAUL DOUGHERTY, N.A.

AMERICAN: 1877—

THE INCOMING TIDE

Height, 26 inches; length, 36 inches

A COMPOSITION of great rock masses gleaming with tints of tawny red where they are lit by an afternoon sun and in contrast to strong shadows. In the foreground the sea is lapping in among them as the tide rises, the greens and whites of its waters making a telling foil for the glowing color of the rocks. At the top of the canvas, seen above the cliffs, are white clouds, tinged with pink, in a sky of qualified blue.

Signed at the lower right, and dated 1907.

Purchased direct from the artist, New York, 1907.

No. 71

LOUIS PAUL DESSAR, N.A.

AMERICAN: 1867—

THE RETURN—EVENING

Height, 18 inches; length, 36 inches

THE center of the picture is occupied by a loaded cart, drawn by a team of white-faced oxen, approaching the spectator. Walking beside the cart is the driver, whose jacket provides a valuable note of subdued blue. Above a low horizon is an evening sky, with the rising moon indicated on the right. The general color scheme is cast in grays and browns.

Signed at the lower right, and dated 1906-'09.

Purchased direct from the artist, New York.

No. 72

GEORGE HITCHCOCK, A.N.A.

AMERICAN: 1850—1913

THE DUNES, HOLLAND

• *Height, 27½ inches; length, 46 inches*

AMID the Holland dunes, with stretches of white sand, scattered grass and herbage, sheep are seen wandering as they pasture. Just over the most distant of the dunes, on the left, is a narrow strip of the sea, and above is a sky of pale tempered blue with a few white clouds. The picture is painted in light tones with prevailing notes of bluish-green and various grays, and a touch of yellow is given by blossoms on one of the bushes in the foreground.

Signed at the lower right, and dated 1892.

Boussod, Valadou Collection, New York, 1902, Catalogue No. 81.



No. 73

6
↑
2
WALTER ELMER SCHOFIELD, N.A.

AMERICAN: 1867—

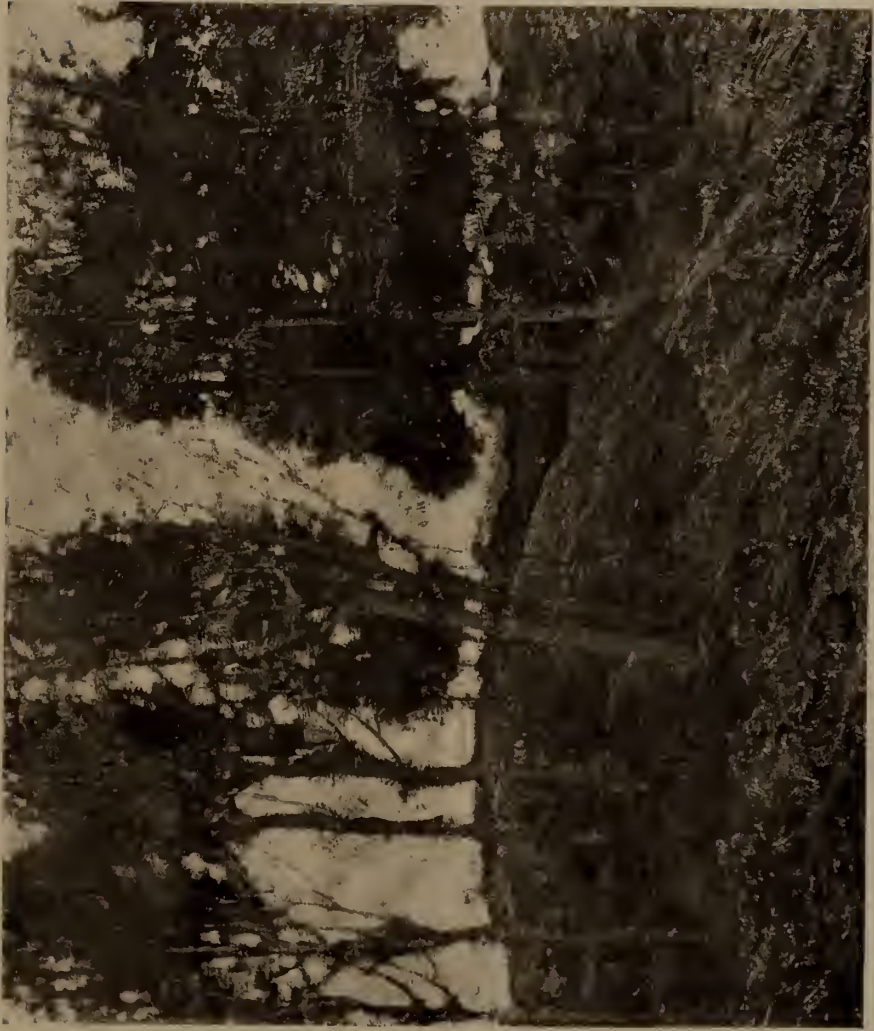
A BREEZY DAY, EARLY AUTUMN

Height, 30 inches; length, 37 inches

THE composition shows a grove of trees, on a bank covered with tangled herbage, and a whitish-gray sky beyond. The color notes comprise qualified greens, browns and grays.

Signed at the lower right.

*From the Pennsylvania Academy of Fine Arts, 1903, Catalogue
No. 107.*



No. 74

PAUL DOUGHERTY, N.A.

AMERICAN: 1877—

EASTERLY STORM—BOAR'S HEAD

Height, 26 inches; length, 36 inches

THE middle portion of the picture is occupied by the ocean with waves breaking in surf and foam against a rocky shore. The tops of the cliffs fill the foreground, and the sky above is heavily clouded with dark gray.

Signed at the lower right, and dated 1905.

Purchased direct from the artist, New York, 1906.



No. 75

PAUL DOUGHERTY, N.A.

AMERICAN: 1877—

MID-ISLAND GORGE

Height, 20 inches; length, 30 inches

221
A LOW-TONED landscape depicting a wide stretch of undulating country, with a ravine running through it in the middle distance. On the farther side of the ravine, some rocks catch the light from the sky, striking a higher note of color amid dark greens and browns. Beyond is a troubled sky of gray and white clouds.

Signed at the lower left.

Purchased direct from the artist, New York, 1907.

No. 76

HENRY WARD RANGER, N.A.

AMERICAN: 1858—1916

1412
A CLASSIC—MASON'S ISLAND

Height, 28 inches; length, 36 inches

NEAR the center of the composition is a great oak tree in autumn foliage, growing at the edge of a forest, which appears on the left; in the foreground, on the right, a pool. Beyond is a prospect of level country, with a line of blue hills at the horizon, while through the open spaces in the foliage is seen a blue sky gradating to light gray below. An excellent effect is obtained by the arrangement of light and dark, and rich color notes.

Signed at the lower left, and dated 1903.

Purchased direct from the artist, New York, 1905.

No. 77

ELLIOTT DAINGERFIELD, N.A.

AMERICAN: 1859—

SUNSET—MISTS AND SHADOWS

Height, 30 inches; length, 36 inches

THE point of view is from rising ground where are rocks and trees, including a storm-torn pine, overlooking a wide valley. Mist is rising over a distant range of hills and, above, the red disk of the sun is seen through a mist of gray. The upper portion of the sky is illumined with touches of orange.

Signed at the lower center.

Purchased direct from the artist, New York, 1906.

No. 78

CHARLES ROLLO PETERS

AMERICAN: 1862—

SAN JUAN MISSION

Height, 36 inches; width, 30 inches

AN effect of moonlight. The white façade of the Mission fills most of the canvas, and a great arched doorway and an open window, above, as well as the cornice of the building, furnish masses of dark. The moonlight glow on the wall is further enhanced in effect by some dark masses of foliage and heavy shadows in the lower part of the picture. Dimly seen are the figures of a woman and child about to enter the Mission.

Signed at the lower right, and dated SAN JUAN, 1891.

No. 79

ELLIOTT DAINGERFIELD, N.A.

AMERICAN: 1859—

DEAD TREES

Height, 30 inches; length, 36 inches

A LANDSCAPE painted in a fairly light key, showing a road leading from the foreground into the right middle distance, with a covered wagon drawn by oxen. On either side of the road are a few dead slender trees. The middle portion of the canvas shows an expanse of pale gray, which seems to indicate a mountain side seen at a distance through the mist, and above is a sky of broken gray clouds with a few dashes of blue.

Signed at the lower left, and dated 1906.

Purchased direct from the artist, New York, 1907.



No. 80

LEONARD OCHTMAN, N.A.

AMERICAN: 1854—

400
AUTUMN TWILIGHT

Height, 52 inches; width, 36 inches

A HANDSOME canvas, in which the color scheme is composed of autumn tints of the russet foliage of the trees, bordering a pasture and hillside of contrasting dull greens. Two cows are seen in the middle distance. Through the foliage of the trees, which reach up to the top of the picture, appears a luminous evening sky.

Signed at the lower left, and dated 1899.

Purchased at the Pennsylvania Academy of Fine Arts, 1900, Catalogue No. 50.



No. 81

BEN FOSTER, N.A.

AMERICAN: 1852—

abd
A MURKY EVENING

Height, 36 inches; length, 42 inches

A MOONLIGHT effect, with the moon in a landscape, depicted in tints of gray. The lower half of the picture shows a sloping hillside, with a road, along which a man is driving some sheep. A grove of trees is seen on the left.

Signed at the lower left.

Purchased direct from the artist, New York, 1904.

No. 82

PAUL DOUGHERTY, N.A.

AMERICAN: 1877—

8
CORNWALL ROCKS

Height, 26 inches; length, 36 inches

GREAT masses of jagged rocks are seen on the shore at the right, illumined by sunlight in tints of varied grays; also, many rocky spaces of ground partly grass-covered. The sea, with green and violet tints, fills the left side of the picture and breaks in white foam against the rocks. The sky is composed of diversified grays.

Signed at the lower right, and dated 1909.

Purchased direct from the artist, New York, 1906.

No. 83

HENRY BAYLEY SNELL, N.A.

AMERICAN: 1858—

TWILIGHT AT SEA

Water Color: Height, 44½ inches; width, 34½ inches

A PICTURE of a large square-rigged vessel, with white hull and all sails set, is seen moving slowly forward to the spectator, in the smooth gray-blue waters of the sea. The mass of the vessel rises up majestically before a sky of tempered blue, and a rosy light on the port gunwale makes a telling note of warm effulgence amid the shadowy tints of cool and quiet twilight blues.

Signed at the lower right.

*Purchased at the American Water Color Society, New York, 1899,
Catalogue No. 239.*

612

4321

SECOND AND LAST EVENING'S SALE

THURSDAY, FEBRUARY 15, 1917

IN THE GRAND BALLROOM OF THE PLAZA

FIFTH AVENUE, 58TH TO 59TH STREET

BEGINNING AT 8.15 O'CLOCK

Nos. 84 to 166, inclusive

No. 84

RALPH ALBERT BLAKELOCK, N.A.

AMERICAN: 1847—

190

INDIAN HUNTER

Height, 8 inches; width, 6 inches

AN Indian is seen on the left, drawing his bow as he is about to shoot at a deer, which is bounding away on the right of the picture. The landscape composition shows trees on the left and a bit of warm tinted in the upper right of the picture.

Signed at the lower right.

Frederick S. Gibbs Collection, New York, 1904, Catalogue No. 108.

No. 85

RALPH ALBERT BLAKELOCK, N.A.

AMERICAN: 1847—

250

THE WAYFARERS

Height, 8 inches; width, 6 inches

IN a landscape setting, with the foliage of trees on either side framing in a vista of hills and sky, are two small figures approaching in the foreground. In their costumes are notes of red and blue.

Signed at the lower right.

Frederick S. Gibbs Collection, New York, 1904, Catalogue No. 107.



No. 86

HOMER D. MARTIN, N.A.

AMERICAN: 1836—1897

LIGHTHOUSE—HONFLEUR

Panel: Height, 11 inches: width, 8 inches

87
THIS little picture, painted in a symphony of tender grays, shows a lighthouse tower with the light shining out, and two windows in the house adjoining showing glints of light also. Back of the buildings is a steep shore, and the smooth water of the foreground, slightly rippling, reflects the gray sky and the lighthouse.

Signed at the lower left.

From William Macbeth, February, 1907, who purchased the painting from Mr. Frank Lethbridge. Letter to Mr. Macbeth from Lethbridge regarding the painting will be presented to the purchaser.

No. 87

J. FRANCIS MURPHY, N.A.

AMERICAN: 1853—

THE WOODS

Height, 8 inches; length, 12 inches

A LANDSCAPE showing a harmony of sober autumn tints, the composition consisting of lowlands with groups of trees on the right; a glimpse of distance and sky at the left.

Signed at the lower right, and dated '89.

T. Kirkpatrick Collection, New York, 1900.

821

No. 88

J. FRANCIS MURPHY, N.A.

AMERICAN: 1853—

SUNSET

Height, 8 inches; length, 10 inches

A GROUP of trees near the center of the picture, in the middle distance, silhouetted against a glowing evening sky; a line of hills, a barn on the left, and a level foreground with a bit of water, are the elements in this little landscape.

Signed at the lower left.

Purchased from S. P. Avery, Jr., New York, 1900.

691



No. 89

ALBERT PINKHAM RYDER, N.A.

AMERICAN: 1847—

600
TWILIGHT

Panel: Height, 5 inches; length, 8½ inches

A MAN riding a white horse, with a dog at his heels, is seen in the foreground, crossing a plain; two small trees are on the right and a third in the left middle distance. Above the low horizon is an evening sky with a strip of gray cloud.

Purchased from William Macbeth, New York, 1902.



No. 90

GEORGE INNESS, N.A.

AMERICAN: 1825—1894

LEEDS, NEW YORK

Millboard: Height, 9½ inches; length, 13 inches

A VIEW of a wide valley, with a large elm in the middle distance, and mountains beyond. The effect is in early autumn while the grass is still green and the foliage is beginning to color.

Signed at the lower left, and dated '83.

William T. Evans Collection, New York, 1900, Catalogue No. 133.

No. 91

J. FRANCIS MURPHY, N.A.

AMERICAN: 1853—

10
11
THE RIVER

Height, 9 inches; length, 11 inches

A COMPLETE little landscape with various elements combined in a pleasing ensemble. On the left is a placid river; in the foreground green meadows with a group of trees in the right center; overhead a gray sky.

Signed at the lower right, and dated '90.

T. Kirkpatrick Collection, New York, 1900.





No. 92

GEORGE DE FOREST BRUSH, N.A.

AMERICAN: 1855—

BOY WITH A GREEN CAP

Millboard: Height, 7 inches; width, 6¼ inches

A HALF-LENGTH picture of a chubby child with rosy cheeks, the face in three-quarter view to the left. On his head is a close-fitting cap of dark green and he wears a jacket of brown with wide collar, fastened at the neck with a narrow pink ribbon. The work shows the characteristic technical methods of a celebrated American artist and is a typical example.

*Signed at the upper left, and dated at the upper right,
1905;*

No. 93

GEORGE FULLER, A.N.A.

AMERICAN: 1822—1884

SHEARING THE DONKEY

Height, 13 inches; length, 18 inches

A BROWN donkey is standing in side view in the middle of the picture, while a man with a shirt of dull red bends over his hindquarters, clippers in hand. On the right a woman is seen passing, and some chickens are pecking about the yard. In the distance are trees and a glimpse of sky.

Signed G. F. at the lower left.

Purchased from William Macbeth, New York, 1905.

No. 94

DWIGHT WILLIAM TRYON, N.A.

AMERICAN: 1849—

MOONRISE—OCTOBER

Panel: Height, 11 inches; length, 16 inches

A POETIC rendering of an early evening effect, painted in quiet tints. Stony pastures occupy the foreground and in the middle distance is a belt of trees; beyond, the moon is just rising, lighting up the sky. The general effect is one of restraint and sobriety.

Signed at the lower left.

Purchased from N. E. Moutross, New York, 1902.

No. 95

HOMER D. MARTIN

AMERICAN: 1836—1897

RUBY STRONG—NORMANDY

Height, 14 inches; width, 11 inches

A FIGURE picture by Homer Martin, portraying a little girl, bare headed and bare legged, with heavy dark hair and wearing a striped jacket of green and red and a skirt of black. She is depicted standing on a Normandy beach, her hands behind her back and the head in profile view as she gazes out to sea. The horizon is placed low on the canvas and a sky of blue-gray forms the background for the little figure.

Purchased from William Macbeth, March 8, 1904; purchased by Mr. Macbeth from Mrs. Martin. There was a painting of Martin's studio showing "Ruby Strong" tacked up on the wall. This painting was photographed and the negative is in the possession of Mr. Macbeth, who had seen the original painting when in possession of Mr. Martin—that is, the painting on the studio wall.



No. 96

HOMER D. MARTIN, N.A.

AMERICAN: 1836—1897

1900 ↘
MOONLIT POND—HONFLEUR

Height, 10 inches; length, 14 inches

A PASTORAL in Normandy showing a pond in the foreground, some trees on the farther bank and the crescent moon, in the twilight, near the horizon. The effect is depicted in harmonious grays.

Signed at the lower right.

Purchased from William Macbeth, New York, February, 1907. Purchased by Mr. Macbeth from Mr. Frank Lethbridge, British Vice-Consul at Ghent, Belgium, who had obtained the picture direct from the artist.



No. 97

ALEXANDER H. WYANT, N.A.

AMERICAN: 1836—1892

EVENING—EARLY AUTUMN

Height, 12 inches; length, 16 inches

1771
A LANDSCAPE in quiet tints of gray and subdued greens and browns. In the middle portion of the picture, on the left, is a group of trees, and there are glimpses of a little stream, here and there in the foreground and in the middle distance, reflecting the gray of a sky filled with clouds.

Signed at the lower right.

From William Macbeth, New York, 1902.



No. 98

J. FRANCIS MURPHY, N.A.

AMERICAN: 1853—

2000
OCTOBER AFTERNOON

Height, 11 inches; length, 19 inches

AN autumn pastoral, with a qualified color scheme of tawny yellows, greens and grays; a gray sky mingled with blue, a grove of trees and a pool in the foreground. Haystacks and a barn are seen in the middle distance.

Signed at the lower left, and dated 1902.

Purchased from George H. Tappan, New York, 1902.





No. 99

GEORGE DE FOREST BRUSH, N.A.

AMERICAN: 1855—

GIRL'S HEAD

Height, 14 inches; width, 10½ inches

A HEAD and bust picture of a trim and wholesome-looking girl, with fair hair and blue eyes, the head turned slightly to the right, and wearing a brown frock. The head is precisely drawn and modeled with simplicity.

Signed at the left (above the shoulder), and dated 1904.

1000

No. 100

HOMER D. MARTIN, N.A.

AMERICAN: 1836—1897

THE DUNES

Water Color: Height, 10 inches; length, 14 inches

FROM a level space in the foreground, partly covered with grass and herbage, rises a steep hillside, rock crowned, and a road, on the left, leading up to its top. A springtime sky of whitish gray with a touch of blue is in agreeable contrast to the colorful notes of the dunes.

Signed at the lower left, and dated 1883.

Purchased from William Macbeth, New York, December, 1904. Purchased by Mr. Macbeth from Obach & Co., 168 New Bond St., London, this firm acting as agents for Mr. John Hebb, an architect of London. Mrs. Martin had informed Mr. Macbeth that Mr. Hebb had purchased paintings from her husband. This painting is reproduced in Mrs. Martin's book on her husband's work.

300

No. 101

HENRY GOLDEN DEARTH, N.A.

AMERICAN: 1864—

THE EMERALD POOL

Panel: Height, 13 inches; length, 16 $\frac{1}{4}$ inches

A COLOR symphony in which the principal notes are qualified greens and blues, with accents of orange and red. A figure of a young woman, in a frock of warm-tinted white, is seen seated on the bank of the pool, the water of which reflects foliage and a brilliant sky.

Signed at the lower right.

Purchased direct from the artist, 1912.

271



No. 102

WINSLOW HOMER, NA.

AMERICAN: 1836—1910

1000
A WRECK NEAR GLOUCESTER

Water Color: Height, 14 inches; length, 20 inches

A TWO-MASTED sailing vessel is here seen cast by a storm upon the rocky shore. Some figures of men are indicated on the sloping deck of the ship and on shore, carrying away burdens on their shoulders, showing that salvage is in progress. The rocks of brown and the sky of gray are contrasted with the dark blue tint of the hull of the vessel.

Signed at the lower left, and dated 1880.

Purchased from Edward C. Stedman, New York, 1905.

No. 103

THEODORE ROBINSON

AMERICAN: 1854—1896

THE THATCHED COTTAGE

Height, 16 inches; width, 14 inches

A HARMONY of grays and greens, with a sky of blue in color unison. On the right is a cottage with high, sloping, thatched roof; on the left, a group of trees. The effect is in sunlight.

Purchased from William Macbeth, New York, March, 1908; purchased by Mr. Macbeth from Mrs. McCahill, a pupil of Theodore Robinson.

325

No. 104

J. FRANCIS MURPHY, N.A.

AMERICAN: 1853—

CHANGING MAPLES

Height, 16 inches; length, 22 inches

A LANDSCAPE with very strong contrasts of dark and light presented by its sky, white with black stormy clouds, and the country in foreground and the distance low-toned under the shadows. In the left center of the picture a group of maples with foliage of tawny yellows and red gives a lighter note, and on the right a break in the sky, with a gleam of light in the clouds, gives another to balance it.

Signed at the lower right, and dated '88.

Purchased from William Macbeth, New York, 1905.

1200

No. 105

WILLIAM MERRITT CHASE, N.A.

AMERICAN: 1849—1916

NEAR BAY RIDGE

Height, 10 inches; length, 15 inches

A HARBOR scene with the water occupying the foreground and vessels, buildings, piers and other landing places crossing the picture in the middle distance. The sky of gray, mingled with blue, is reflected in the water, and a few notes of white, red and black, accenting the shipping, diversify the general effect.

Signed at the lower right.

William T. Evans Collection, New York, 1913.



Weymouth, Mass.

No. 106

ALEXANDER H. WYANT, N.A.

AMERICAN: 1836—1892

700
THE OLD SAND ROAD

Height, 12 inches; length, 16 inches

A LANDSCAPE composed of a plain, stretching far away to a low horizon, and an autumn sky of gray. Through the middle of the picture, over the flat lands, runs a sandy road. The immediate foreground is in shadow and this portion of the picture is balanced by clouds in the upper part of the sky which are darker than the space below them. Thus, with the light concentrated in the central portion of the picture, the effect is made striking, although the landscape, in its general effect, is rendered in the quietest of tints.

Signed at the lower right center.

Purchased from Mrs. A. H. Wyant, New York, 1902.



No. 107

900

HOMER D. MARTIN, N.A.

AMERICAN: 1836—1897

INDIAN SUMMER

Height, 16 $\frac{3}{4}$ inches; width, 12 inches

A PICTURE of the American autumn which bears on its face convincing evidence of truth to nature. The entire foreground is occupied by a shallow stream and a piece of its gravelly bank. In the middle distance the stream is bordered by trees and through the foliage appears a sky of pale blue. The water reflects the foliage and the sky while, at the same time, its transparency discloses portions of the stream's sandy bed.

Thomas B. Clarke Sale, New York, 1899, Catalogue No. 345.



No. 108

ROBERT C. MINOR, N.A.

AMERICAN: 1840—1904

EARLY AUTUMN

Height, 16 inches; length, 21 inches

AN excellent example of the landscape art of Robert C. Minor, in a well-balanced composition presenting a foreground of grass and herbage, while on the left are several trees whose branches and foliage reach to the top of the picture. On the right, beyond a road which winds through the fields, is another group of trees, the foliage gently illumined by afternoon sun; in the distance a line of blue hills. The sky of broken white and gray clouds, with some spaces of blue, is luminous and effective.

Signed at the lower right.



No. 109

ALEXANDER H. WYANT, N.A.

AMERICAN: 1856—1892

5200
A BROOK IN THE CATSKILLS

Height, 14 inches; length, 20 inches

A WYANT with a picturesque subject, including a placid stream in the middle foreground, meadows on either side, and a group of trees in the left center of the composition. Over all is a sky of delicate gray clouds with some blue intervening in the upper portion.

Signed at the lower right.



No. 110

400
FREDERICK BALLARD WILLIAMS, N.A.

AMERICAN: 1871—

HALCYON DAYS

Height, 16 inches; length, 24 inches

A GROUP of four female figures in a setting of landscape, with a view of the sea and sky beyond. Three of the figures are grouped together in the middle left portion of the picture; two being seated and one standing, the last holding up a baby in her arms. The fourth figure, in the right center, is advancing towards the spectator and holds a rose in her outstretched right hand. The costumes show tints of yellow, blue, pink and white.

Signed at the lower left.

Purchased from William Macbeth, New York, 1907.



No. 111

600
HENRY GOLDEN DEARTH, N.A.

AMERICAN: 1864—

THE THREE-MASTER

Panel: Height, 18 inches; length, 21 $\frac{3}{4}$ inches

A HARMONY of sober tints—grays, blacks, yellows, browns, dull pinks and reds—showing a sailing vessel, in side view, moored in the *bassin* of a French seaport. The masts and rigging stretch upward before a background of gray sky and the houses lining the harbor quays.

Signed at the lower right

Purchased direct from the artist, New York, 1912.



No. 112

J. FRANCIS MURPHY, N.A.

AMERICAN: 1853—

2400
SPRINGTIME IN THE CATSKILLS

Height, 16 inches; length, 22 inches

A LANDSCAPE of subtle general effect, in which the elements of the composition are level fields, with a brook in the right foreground; some trees in spring foliage on the extreme right, and others in the distance, with a line of hills at the horizon. Over all is a sky of tender gray. The picture is painted in tints that are qualified by the atmospheric effect of a somewhat misty day in springtime.

Signed at the lower right, and dated 1902.



No. 113

487
RALPH ALBERT BLAKELOCK, N.A.

AMERICAN: 1847—

EARLY EVENING

Height, 16 inches; length, 24 inches

IN the foreground is a sheet of water which reflects the light of the full moon, seen in the middle of a sky mostly filled with clouds. Some trees and bushes diversify the forward planes of the picture, and in the distance is a range of blue hills.

Signed at the lower right.

William T. Evans Collection, New York, 1900, Catalogue No. 10.



No. 114

THEODORE ROBINSON

AMERICAN: 1854—1896

1000
TWACHTMAN'S HOUSE

Height, 18 inches; length, 22 inches

A WINTER landscape showing the roofs of a country house and its walls and garden in a mantle of snow. The whole is in shadow except for a part of the picture on the left where the sun gleams on the snow-covered ground. This excellent example of the art of Theodore Robinson shows his characteristic feeling for color and his well-known quality of truthful observation.

Signed at the lower left, and dated 17 JAN. 1892.

William T. Evans Collection, New York, 1900, Catalogue No. 146.



No. 115

11700
WINSLOW HOMER, N.A.

AMERICAN: 1836—1910

PERILS OF THE SEA

Water Color: Height, 14 inches; length, 20 inches

Two fisher maidens are seen standing on a dock in the foreground and below is a group of sailor men, one, with arm extended, pointing out to sea. The middle portion of the picture shows the ocean, and above is a dark, stormy sky. A stirring depiction of an incident in the seafarer's life in which tragedies are so numerous, painted in a color scheme of subdued general tone.

Signed at the lower right, and dated 1881.

Thomas B. Clarke Collection, New York, 1899, Catalogue No. 269.





No. 116

1340
JOHN LA FARGE, N.A.

AMERICAN: 1835—1910

BRIDLE PATH—TAHITI

Water Color: Height, 19 inches; length, 20½ inches

A VIRILE piece of painting of a South Sea Island subject, characterized by strong color. A grassy roadway, bordering the sea, leads from the left foreground to a point where it disappears in the middle distance amid thick masses of foliage. A horse, with rider nude except for a red loin cloth, is seen in the extreme left foreground, in back view to the spectator. Beyond the hills which line the shore is an evening sky of great brilliancy.

No. 117

WINSLOW HOMER, N.A.

AMERICAN: 1836—1910

1000

SAILING OUT OF GLOUCESTER HARBOR

Water Color: Height, 14 inches; length, 20 inches

A SLOOP under full sail and careening to the right is seen making its way seaward, while a two-master is indicated on the horizon. The hull and sail of the sloop are reflected in the water, making a note of dark gray in an ensemble of clear tints, the sky being filled with white clouds and, in the upper portion, gray.

Signed at the lower left.

From Edward C. Stedman, New York, 1905.

No. 118

WILLIAM GEDNEY BUNCE, N.A.

AMERICAN: 1840—1916

425

VENICE—MOONLIGHT

Panel: Height, 24 inches; width, 16 inches

THIS picture presents an ensemble of qualified blues and grays, the sky occupying the greater portion of the composition. The moon is rising over the horizon and the Campanile, sail-boats and lights on shore produce various accents of value.

Signed at the lower right.

No. 119

500
J. FRANCIS MURPHY, N.A.

AMERICAN: 1853—

APPROACH TO THE OLD FARM

Height, 22 inches; width, 16 inches

A LANDSCAPE with a color scheme of warm greens and grays and yellow browns; a meadow and pathway in the foreground, some slender trees in the middle distance; farm buildings on the left, and rising ground beyond. Over all an autumn sky of gray.

Signed at the lower left, and dated 1902.

Frederick S. Gibbs Collection, New York, 1904, Catalogue No. 271.



J. FRANK MURPHY - 1902



No. 120

400
HENRY GOLDEN DEARTH, N.A.

AMERICAN: 1864—

A GRAY DAY, BOULOGNE-SUR-MER

Height, 18 inches; length, 22 inches

ONE of a series of pictures, by this artist, of harbors and shipping. In the forepart of the composition, in the basin of the port, are moored several tugs and farther off are other vessels. Smoke and steam arise from their funnels and pipes and the water reflects a sky of warm gray. Notes of green and red in the hulls diversify the sober scheme of color.

Signed at the lower right

Purchased direct from the artist, New York, 1912.

No. 121

THEODORE ROBINSON

AMERICAN: 1854—1896

3 W

GATHERING PLUMS

Height, 22 inches; width, 18 inches

A GIRL, with white apron and cap and yellow frock, stands on a step-ladder up among the foliage of plum trees. A little distance away is another girl, in white bodice and blue apron. The scene is in a French orchard and is depicted in sunlight effect with fresh, clear color.

Signed at the lower right, and dated 1891.

Purchased from S. S. Dustin, New York, 1908.

No. 122

LOUIS PAUL DESSAR, N.A.

AMERICAN: 1867—

575

MOONLIGHT

Height, 18 inches; length, 24 inches

THE composition shows a sheep stable with high sloping thatched roof, on the right, and a shepherd and his flock entering by a doorway in the plastered wall. By the side of a road, which leads into the middle of the picture, a cottage, on the left, shows a gleam of lamp-light from within in the cracks of the shutters. Overhead is a night sky with a few stars.

Signed at the lower right.

No. 123

HOMER D. MARTIN, N.A.

AMERICAN: 1836—1897

3300
AUTUMN ON THE SUSQUEHANNA

Height, 15 inches; length, 25 inches

A WELL-KNOWN example of the earlier period of Homer Martin's landscape painting, characterized by conscientious study of detail. On an eminence in the foreground are three dead trees which, rising to the upper part of the canvas, form valuable dark notes in the pervading color harmony of autumn tints of red and tawny yellow. The river winds through the hills in the middle of the picture and the distance fades away to the horizon where it joins a sky of tender grays.

William T. Evans Collection, New York, 1900, Catalogue No. 226.



No. 124

ALEXANDER H. WYANT, N.A.

AMERICAN: 1836—1892

2300
NIGHTFALL

Height, 16 inches; length, 24 inches

THE sun has set and night is coming on over a roadway, leading from the foreground into the middle of the picture, through stretches of green pastures. Groups of trees show their masses before a sky of gray clouds and on the horizon, toward the right, is the silhouette of the roof of a house.

Signed at the lower left.

William T. Evans Collection, New York, 1900, Catalogue No. 50.



No. 125

GEORGE FULLER, A.N.A.

AMERICAN: 1822—1884

50002
50001
50000
49999
49998
49997
49996
49995
49994
49993
49992
49991
49990
49989
49988
49987
49986
49985
49984
49983
49982
49981
49980
49979
49978
49977
49976
49975
49974
49973
49972
49971
49970
49969
49968
49967
49966
49965
49964
49963
49962
49961
49960
49959
49958
49957
49956
49955
49954
49953
49952
49951
49950
49949
49948
49947
49946
49945
49944
49943
49942
49941
49940
49939
49938
49937
49936
49935
49934
49933
49932
49931
49930
49929
49928
49927
49926
49925
49924
49923
49922
49921
49920
49919
49918
49917
49916
49915
49914
49913
49912
49911
49910
49909
49908
49907
49906
49905
49904
49903
49902
49901
49900
49899
49898
49897
49896
49895
49894
49893
49892
49891
49890
49889
49888
49887
49886
49885
49884
49883
49882
49881
49880
49879
49878
49877
49876
49875
49874
49873
49872
49871
49870
49869
49868
49867
49866
49865
49864
49863
49862
49861
49860
49859
49858
49857
49856
49855
49854
49853
49852
49851
49850
49849
49848
49847
49846
49845
49844
49843
49842
49841
49840
49839
49838
49837
49836
49835
49834
49833
49832
49831
49830
49829
49828
49827
49826
49825
49824
49823
49822
49821
49820
49819
49818
49817
49816
49815
49814
49813
49812
49811
49810
49809
49808
49807
49806
49805
49804
49803
49802
49801
49800
49799
49798
49797
49796
49795
49794
49793
49792
49791
49790
49789
49788
49787
49786
49785
49784
49783
49782
49781
49780
49779
49778
49777
49776
49775
49774
49773
49772
49771
49770
49769
49768
49767
49766
49765
49764
49763
49762
49761
49760
49759
49758
49757
49756
49755
49754
49753
49752
49751
49750
49749
49748
49747
49746
49745
49744
49743
49742
49741
49740
49739
49738
49737
49736
49735
49734
49733
49732
49731
49730
49729
49728
49727
49726
49725
49724
49723
49722
49721
49720
49719
49718
49717
49716
49715
49714
49713
49712
49711
49710
49709
49708
49707
49706
49705
49704
49703
49702
49701
49700
49699
49698
49697
49696
49695
49694
49693
49692
49691
49690
49689
49688
49687
49686
49685
49684
49683
49682
49681
49680
49679
49678
49677
49676
49675
49674
49673
49672
49671
49670
49669
49668
49667
49666
49665
49664
49663
49662
49661
49660
49659
49658
49657
49656
49655
49654
49653
49652
49651
49650
49649
49648
49647
49646
49645
49644
49643
49642
49641
49640
49639
49638
49637
49636
49635
49634
49633
49632
49631
49630
49629
49628
49627
49626
49625
49624
49623
49622
49621
49620
49619
49618
49617
49616
49615
49614
49613
49612
49611
49610
49609
49608
49607
49606
49605
49604
49603
49602
49601
49600
49599
49598
49597
49596
49595
49594
49593
49592
49591
49590
49589
49588
49587
49586
49585
49584
49583
49582
49581
49580
49579
49578
49577
49576
49575
49574
49573
49572
49571
49570
49569
49568
49567
49566
49565
49564
49563
49562
49561
49560
49559
49558
49557
49556
49555
49554
49553
49552
49551
49550
49549
49548
49547
49546
49545
49544
49543
49542
49541
49540
49539
49538
49537
49536
49535
49534
49533
49532
49531
49530
49529
49528
49527
49526
49525
49524
49523
49522
49521
49520
49519
49518
49517
49516
49515
49514
49513
49512
49511
49510
49509
49508
49507
49506
49505
49504
49503
49502
49501
49500
49499
49498
49497
49496
49495
49494
49493
49492
49491
49490
49489
49488
49487
49486
49485
49484
49483
49482
49481
49480
49479
49478
49477
49476
49475
49474
49473
49472
49471
49470
49469
49468
49467
49466
49465
49464
49463
49462
49461
49460
49459
49458
49457
49456
49455
49454
49453
49452
49451
49450
49449
49448
49447
49446
49445
49444
49443
49442
49441
49440
49439
49438
49437
49436
49435
49434
49433
49432
49431
49430
49429
49428
49427
49426
49425
49424
49423
49422
49421
49420
49419
49418
49417
49416
49415
49414
49413
49412
49411
49410
49409
49408
49407
49406
49405
49404
49403
49402
49401
49400
49399
49398
49397
49396
49395
49394
49393
49392
49391
49390
49389
49388
49387
49386
49385
49384
49383
49382
49381
49380
49379
49378
49377
49376
49375
49374
49373
49372
49371
49370
49369
49368
49367
49366
49365
49364
49363
49362
49361
49360
49359
49358
49357
49356
49355
49354
49353
49352
49351
49350
49349
49348
49347
49346
49345
49344
49343
49342
49341
49340
49339
49338
49337
49336
49335
49334
49333
49332
49331
49330
49329
49328
49327
49326
49325
49324
49323
49322
49321
49320
49319
49318
49317
49316
49315
49314
49313
49312
49311
49310
49309
49308
49307
49306
49305
49304
49303
49302
49301
49300
49299
49298
49297
49296
49295
49294
49293
49292
49291
49290
49289
49288
49287
49286
49285
49284
49283
49282
49281
49280
49279
49278
49277
49276
49275
49274
49273
49272
49271
49270
49269
49268
49267
49266
49265
49264
49263
49262
49261
49260
49259
49258
49257
49256
49255
49254
49253
49252
49251
49250
49249
49248
49247
49246
49245
49244
49243
49242
49241
49240
49239
49238
49237
49236
49235
49234
49233
49232
49231
49230
49229
49228
49227
49226
49225
49224
49223
49222
49221
49220
49219
49218
49217
49216
49215
49214
49213
49212
49211
49210
49209
49208
49207
49206
49205
49204
49203
49202
49201
49200
49199
49198
49197
49196
49195
49194
49193
49192
49191
49190
49189
49188
49187
49186
49185
49184
49183
49182
49181
49180
49179
49178
49177
49176
49175
49174
49173
49172
49171
49170
49169
49168
49167
49166
49165
49164
49163
49162
49161
49160
49159
49158
49157
49156
49155
49154
49153
49152
49151
49150
49149
49148
49147
49146
49145
49144
49143
49142
49141
49140
49139
49138
49137
49136
49135
49134
49133
49132
49131
49130
49129
49128
49127
49126
49125
49124
49123
49122
49121
49120
49119
49118
49117
49116
49115
49114
49113
49112
49111
49110
49109
49108
49107
49106
49105
49104
49103
49102
49101
49100
49099
49098
49097
49096
49095
49094
49093
49092
49091
49090
49089
49088
49087
49086
49085
49084
49083
49082
49081
49080
49079
49078
49077
49076
49075
49074
49073
49072
49071
49070
49069
49068
49067
49066
49065
49064
49063
49062
49061
49060
49059
49058
49057
49056
49055
49054
49053
49052
49051
49050
49049
49048
49047
49046
49045
49044
49043
49042
49041
49040
49039
49038
49037
49036
49035
49034
49033
49032
49031
49030
49029
49028
49027
49026
49025
49024
49023
49022
49021
49020
49019
49018
49017
49016
49015
49014
49013
49012
49011
49010
49009
49008
49007
49006
49005
49004
49003
49002
49001
49000

IDEAL HEAD

Height, 23½ inches; width, 19¾ inches

EMERGING from a dark background is the face of a young woman in three-quarters view; lace-like drapery is indicated about her neck and shoulders, and the light falls from the left on the head and body.

Signed at the lower left.

Purchased from William Macbeth, New York, January 31, 1906, who purchased the painting from Walter Rowlands, 431 Boylston Street, Boston.



No. 126

DWIGHT WILLIAM TRYON, N.A.

AMERICAN: 1849—

ACROSS THE FIELDS—NOVEMBER

Panel: Height, 18 inches; length, 30 inches

AN autumn pastoral of New England country, with stony pastures in the foreground, dotted with bushes and trees. Farther away is another stretch of level ground and a belt of trees, with low-lying hills in the distance. The sky, of quiet grays, is tinged with blue at the horizon and gradated into warmer tones above.

Signed at the lower right.

From N. E. Montross, New York, 1904.



No. 127

PAUL DOUGHERTY, N.A.

AMERICAN: 1877—

5-21
EVENING AFTER THE RAIN

Height, 20 inches; length, 30 inches

A BELT of trees in autumn foliage, and in part without leafage at all, crosses the canvas in the middle distance, following the gentle slope of a hillside. At the base of the rising ground runs a stone fence and the foreground is composed of meadowland, with withered herbage, and a small stream. The sky with a curtain of gray cloud, tinged with pink on the lower edges, reveals below, on the left, a clear space filled with evening light.

Signed at the lower left, and dated 1903.

Purchased from William Macbeth, New York, 1903.



No. 128

GEORGE INNESS, N.A.

AMERICAN: 1825—1894

NEAR MONTCLAIR

Height, 19 inches; length, 28 $\frac{3}{4}$ inches

77
AN unfinished picture, vigorously "laid in" and completely balanced in composition, values and general effect. A plain occupies the foreground and a white-walled cottage is seen at the right, in the middle distance. On the horizon, at the left, is a town. The sky shows broken masses of white and gray clouds with a space of blue in the left center.

Signed at the lower right.

No. 129

WINSLOW HOMER, N.A.

AMERICAN: 1836—1910

220 THE TURKEY BUZZARD

Water Color: Height, 14 inches; length, 20 inches

220 A CLUMP of palm trees, with rich green foliage and light gray trunks, forms the center of this brilliant piece of painting. A strip of sandy beach, the blue water of a lagoon, a belt of trees in the distance, dark under the shadow of a cloud, and a high sky of gray with a patch of blue in the upper left, complete the picture. High up on the right sails the turkey buzzard. The effect is rendered with the simplest of means, evincing admirable mastery of the medium, and delighting by sureness of accomplishment.

Signed at the lower left, and dated 1904.

Purchased from the artist, through the American Water Color Society, New York, 1906, Catalogue No. 442.

No. 130

HENRY WARD RANGER, N.A.

AMERICAN: 1858—1916

GOLDEN EVENING: NOANK HARBOR

130

Height, 28 inches; length, 36 inches

A WELL-KNOWN picture, presenting a color harmony of warm tints. The lower part of the composition shows the expanse of the sea, with low horizon, dotted with a few sails on the extreme left. Ships and buildings are on the right, with two buoys in the immediate foreground. From the horizon to the top of the picture is a great expanse of evening sky in which broken clouds are gilded with orange, pink and yellow, the whole tempered by notes of blue.

Signed at the lower left, and dated 1905.

Purchased direct from the artist, New York, 1905.

No. 131

JULIAN RIX

AMERICAN: 1851—1903

131

NORTHERN LAKE, NEW BRUNSWICK, CANADA

Height, 22 inches; length, 30 inches

THE waters of the lake occupy the lower part of the picture and reflect on rippling waves the warm yellow-white of sun-kissed cumulus clouds in a sky of blue. Through the middle of the composition runs a belt of level country with a mountain rising from the plains on the right. The effect depicted is one of late afternoon.

Signed at the lower right, and dated 1899.

Purchased direct from the artist, New York, 1899.

No. 132

300 J
JOHN HENRY TWACHTMAN

AMERICAN: 1853—1902

THE FROZEN BROOK

Height, 30 inches; width, 22 inches

A WINTER landscape with snow-covered slopes and a brook in the middle portion of the canvas. In the upper part, through the trunks and branches of trees, is seen a stretch of country and a bit of gray sky.

Signed at the lower left.

From the J. H. Twachtman Sale, New York, 1903, Catalogue No. 41.



No. 133

WINSLOW HOMER, N.A.

AMERICAN: 1836—1910

3700
A VOICE FROM THE CLIFFS

Water Color: Height, 21 inches; length, 30 inches

THIS is one of the most celebrated of all of Winslow Homer's figure pictures, and belongs to the series which he painted from English motives in the early eighties. It has been described and praised by many writers. The composition shows a group of three fisher-girls, with their baskets and nets, standing in three-quarter length in the immediate foreground, the group relieved against a background of chalky cliffs. At the lower right, on the surface of an estuary, is a small sail-boat, and on the extreme left, behind the group of figures, is a dory drawn up on shore. The three young women, whose figures face the spectator, are looking intently forward to the right. Their expressions show intentness on whatever is happening on the sea which lies beyond.

Signed at the lower right, and dated 1883.

Purchased from Edward C. Stedman's Collection, New York, 1905.



1121
No. 134

PAUL DOUGHERTY, N.A.

AMERICAN: 1877—

GOLD AND GLOOM

Height, 25 inches; length, 30 inches

A HEADLAND jutting out into the sea, in the middle distance on the right, and appearing in the picture quite dark against the sky of clouds tinged with evening light, furnishes a sombre mass in contrast to lighter masses, and explains the title. In the immediate foreground on the left is a bit of shore. The waters between this and the headland and in the view of the sea beyond are depicted in tints of varied blues, grays and whites.

Signed at the lower left.

Purchased from William Macbeth, New York, 1905.



No. 135

9600
GEORGE INNESS, N.A.

AMERICAN: 1825—1894

RETURNING FROM PASTURE—MILTON

Panel: Height, 22 inches; length, 34 inches

GREEN pastures and, on the right, groups of trees in summer foliage, with a sky of subtle gray and white and a bit of blue, are the elements of this characteristic Inness landscape. On the left, in the foreground, two cows, wending their way homeward, form notes of light tints in the prevailing sober harmony.

Signed at the lower right, and dated 1880.

William T. Evans Collection, New York, 1900, Catalogue No. 114.



No. 136

340d
ALEXANDER H. WYANT, N.A.

AMERICAN: 1836—1892

THE DAWN

Height, 22 inches; length, 30 inches

A LANDSCAPE composed of the simple elements of meadows, in the foreground, with a pool and a group of trees on the left. The gray autumnal sky shows clouds tinged with the coming light of day and spaces of subdued blue in the upper portion.

Signed at the lower left.

From William Macbeth, and purchased by him from Mrs. Wyant in 1899.



No. 137

J. FRANCIS MURPHY, N.A.

AMERICAN: 1853—

3100
AFTERGLOW—OCTOBER

Height, 24 inches; length, 33 inches

A LANDSCAPE composed of simple elements, a level stretch of country, bordered by masses of trees which extend across the canvas, occupying the foreground. Beyond is rising ground, and the sky, overhead, shows pale tints of pink and yellow intermingled with white and tempered blue. The effect is in the autumn, with the foliage illumined in part by reflected sunshine coming from the left and producing a glow of red and yellow. This is in contrast with the notes of green in the foreground and the whole is suffused with the October haze.

Signed at the lower left, and dated 1905.

Purchased from William Macbeth, New York, 1905.



No. 138

HENRY WARD RANGER, N.A.

AMERICAN: 1858—1916

822
CLEARING FIRES

Height, 28 inches; length, 36 inches

A ROUGH road leads from the middle foreground through a piece of land that has recently been stripped of its timber, stumps and piles of cordwood appearing here and there, while in the distance brushwood fires are burning, with blue-gray smoke rising in the air. On either side of the road are a few trees, which have been spared, their tall trunks reaching to the upper part of the picture where their branches are covered with foliage in autumn tints. Beyond is a wide expanse of pearly gray sky with some spaces of blue.

Signed at the lower left, and dated 1909.

Purchased direct from the artist.



No. 139

LOUIS PAUL DESSAR, N.A.

AMERICAN: 1867—

for load

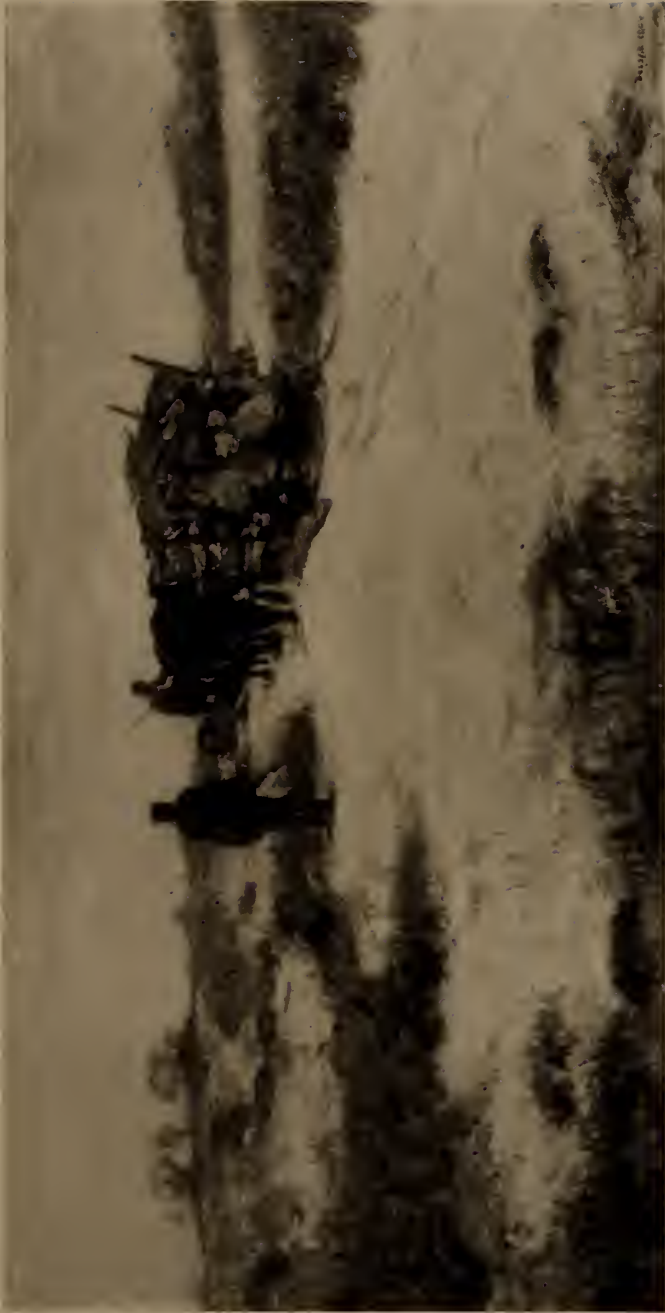
HAULING THE WINTER'S WOOD

Height, 18 inches; length, 36 inches

THE central point of interest, giving the picture its title, is a sled, piled high with tree trunks and drawn by a double team of oxen, moving slowly away from the spectator as it is hauled over a stretch of snow-covered country. Two men, on foot, accompany the load and, above the horizon, bright notes of red and yellow in the sky indicate the setting of the winter sun.

Signed at the lower right, and dated 1904.

Purchased direct from the artist, New York, 1905.



No. 140

CHARLES HAROLD DAVIS, N.A.

AMERICAN: 1856—

472
THE AWAKENING OF SPRING

Height, 24 inches; length, 36 inches

A PICTURE of rolling, rocky pastures with trees dotting a ravine in the middle distance and extending to the sea, where the blue waters are seen through a misty April atmosphere. The sky shows the tempered, rain-washed blue of the spring season and white clouds float above the horizon.

Signed at the lower left.

Purchased from the late Theo. C. Noé, New York, March, 1904.



No. 141

1000
HENRY WARD RANGER, N.A.

AMERICAN: 1858—1916

*CLOUD AND SUNSHINE: NEAR AN OLD
QUARRY, NEW ENGLAND*

Height, 28 inches; length, 36 inches

A GROUP of oaks, meadowlands and a pool are the features of the foreground in this landscape. In the distance appear a white spire and other indications of a village embowered in trees. From a horizon, placed somewhat low, rises a sky filled with broken cloud forms, warm tinted with pink and yellow, while on the extreme left rain is descending from a dark cloud high up in the picture. The pool reflects, with a valuable note of color, a space of blue in the sky.

Signed at the lower left, and dated '96.



No. 142

JOHN HENRY TWACHTMAN

AMERICAN: 1853—1902

4100
RAPIDS IN THE YELLOWSTONE

30 inches square

A COLOR arrangement in high-keyed tints, the motive being the waters of the Yellowstone flowing rapidly between rocky banks, which rise to white peaks in the upper portion of the canvas. The prevailing tints are qualified whites, pinks and blues, with a suggestion of violet, with more positive notes given in the blue and green of the water and the blue in a space of sky.

Stamp of the "Twachtman Sale" at the lower left.

Purchased from Silas S. Dustin, New York, 1908.



No. 143

HORATIO WALKER, N.A.

AMERICAN: 1858—

GIRL FEEDING TURKEYS

Height, 28 inches; length, 36 inches

30CV
A FLOCK of turkeys, including a fine bronze gobbler and others of both the gray and buff variety, are grouped in the foreground, picking up grain. A farm-girl, in jacket of red and grayish-white apron, is standing near by leaning against a pile of cord-wood in the shade of trees, at the left of the picture. On the right is a cottage with its garden fence and a strip of country beyond.

Signed at the lower right, and dated 1904.

Purchased from N. E. Montross, New York, 1904.



No. 144

ALEXANDER H. WYANT, N.A.

AMERICAN: 1836—1892

4100
KEENE VALLEY

Height, 35 inches; width, 28 inches

A WYANT of superior quality and subtle charm. While the middle distance, showing the wooded valley, mountain tops beyond, and the sky, seen through the tree trunks that reach up from the foreground to the top of the canvas, are carried about as far in the painting as was the famous artist's habit in completing a picture, parts of the foreground and of the foliage are less finished. But, taken as a whole, the canvas is distinctly unified and lacks nothing in completeness of general effect. The foreground, with a brook tumbling over its rocky bed and spreading out in a pool below, is in shadow. Beyond, all is lit up by the sun in a hazy sky.

Signed at the lower left.

Purchased from Mrs. A. H. Wyant, widow of the artist, New York, 1902.



No. 145

LOUIS PAUL DESSAR, N.A.

AMERICAN: 1867—

2-911
CHANGING PASTURE—OCTOBER

Height, 28 inches; length, 36 inches

· **HERE**, in a clear space in the woods, a flock of sheep is seen advancing, the shepherd walking behind them, with the sun lighting up the middle part of the composition. Boulders lie in shadow in the foreground and, on the left and right, the trunks of sturdy oaks furnish notes of gray amid the masses of crimson and yellow foliage. A glimpse of sky, with notes of blue and white, gives an additional contrast. A subdued pearly quality runs through the entire color rendering, softening the strong tints of the American autumn.

Signed at the lower right, and dated 1912.

Purchased direct from the artist.



No. 146

521
GEORGE INNESS, JR., N.A.

AMERICAN: 1854—

ON THE SAINTE-CROIX RIVER, CANADA

Height, 26 inches; length, 36½ inches

A LANDSCAPE with a powerful effect of sunlight, coming from the right. A broad road leads through the middle of the foreground to the river, with low hills on the shore and a mass of cloud in the middle portion of the sky receives the sunlight and glistens with a glowing yellow tint. In the roadway are a flock of sheep and a shepherd and a white house is seen near by.

Signed at the lower left.



No. 147

HENRY WARD RANGER. N.A.

AMERICAN: 1858—1916

2100 BECKY COLE'S HILL

Height, 28 inches; length, 36 inches

A CELEBRATED Ranger landscape, with the simple motive of a hill-side near East Lyme, Conn. A stone wall runs across the hill near the top, where there are some trees, and in the right foreground is a little pool of water which reflects the blue of the sky. In the sky itself are warm tinted white and gray clouds. Restrained, forceful color and broad general effect make this a notable canvas.

Signed at the lower left, and dated '98.

Purchased from Arthur Tooth & Sons, New York, 1899.



No. 148

ELLIOTT DAINGERFIELD, N.A.

AMERICAN: 1859—

THE FOREST OF LATMOS

Height, 36 inches; width, 30 inches

Two figures, a shepherd with his crook, seated at the foot of a great tree, which rises from the foreground to the top of the canvas, and a young woman, in white robes, standing before him, form the center of interest in the composition. Nearby are some sheep, lying down. Beyond is a valley filled with mist and, above, a night sky of clouds with spaces of blue where stars are twinkling. The moon is indicated near the middle of the picture.

Signed at the lower left.

Purchased direct from the artist, New York, 1906.



No. 149

PAUL DOUGHERTY, N.A.

AMERICAN: 1877—

BLACK HEAD, MONHEGAN ISLAND

Height, 26 inches; length, 36 inches

600
A MARINE in very sober general tone, showing the sea in the middle portion of the picture, surrounded by high lands on shore, and great rock formations in the foreground. The sky is of dark grays with notes of subdued white, and a gleam of pale sunshine, coming from the right, illumines a part of the shore and glints on the breakers.

Signed at the lower right.

Purchased direct from the artist, New York, 1906.

No. 150

HENRY GOLDEN DEARTH, N.A.

AMERICAN: 1864—

THE BROOK

Height, 35 inches; width, 24 inches

97
THE composition shows a stream tumbling over a succession of small rocks, from the middle distance to the immediate foreground and on either side are tall beeches, with white and black trunks, the foliage in qualified tints of crimson and yellow. The vista between discloses a group of people indicated by notes of white and red, and, beyond, a timbered valley and a distant range of hills. Overhead is a sky of blue and white. Strong notes of blue in the waters of the brook constitute a foil for the rich coloring of the rest of the landscape.

Signed at the lower right.

Purchased direct from the artist, New York, 1910.

No. 151

HENRY WARD RANGER, N.A.

AMERICAN: 1858—1916

THE LAST OF SPRING

Height, 28 inches; length, 36 inches

A WOOD interior with stone fences traversing the foreground, a stream in the middle distance and, beyond, seen through the branches of the trees, a hillside. The foliage, in the upper part of the picture, shows tints of yellow and orange, while the blue of the sky appears in the open spaces. The warm tone, characterizing the landscape in general, is accented by grays, blacks and whites.

Signed at the lower left, and dated 1909.

Purchased direct from the artist.

1150

No. 152

PAUL DOUGHERTY, N.A.

AMERICAN: 1877—

THE WAVE AND THE CLOUD

Height, 36 inches; width, 34 inches

A MARINE in which surging waters are breaking in white foam in the middle of the picture. Above, a great mass of cloud is depicted, rising in the sky, its upper portion illumined by the sun. The prevailing color notes are qualified blue and green and violet grays, with accents of warm white.

Signed at the lower right.

Purchased direct from the artist, New York, 1907.

1121-

No. 153

HORATIO WALKER, N.A.

AMERICAN: 1858—

MOONRISE—A CANADIAN PASTORAL

Height, 28 inches; length, 38 inches

IN the center of the picture are a yoke of oxen, one white, the other red, just detached from an old-fashioned plow, and two men about to leave the field after the day's work. In a space of evening blue, in the gray sky, the disk of the moon is seen peeping over a cloud near the horizon.

Signed at the lower right, and dated 1902.

Purchased from N. E. Montross, New York, 1903.

3300



No. 154

1175
HENRY WARD RANGER, N.A.

AMERICAN: 1858—1916

SENTINEL ROCK

Height, 36 inches; width, 28 inches

GRAY rock formations on a rugged piece of land, from which the timber has been cut, fill the lower half of the canvas; in the immediate foreground some piles of cord-wood, and a sapling, which has been left standing, rises from behind the rocks in the center of the picture against a sky of gray clouds. On the left is a distant prospect of a wooded hillside. The predominating color notes are greens and yellows with accents of blackish-gray.

Signed at the lower left, and dated 1907.

Purchased direct from the artist.



No. 155

WILLIAM GEDNEY BUNCE, N.A.

AMERICAN: 1840—1916

127
SUNSET—VENICE

Height, 37½ inches; width, 35 inches

THE towers and domes of Venice are depicted in the middle distance of this composition, while the waters in the foreground reflect an evening sky with tints of greenish-yellow and gray in the upper portion, gradating into rose near the horizon where the sun has set. A sail and a buoy on the extreme right give low toned notes of red.

Signed at the lower left.



No. 156

3200
WILLIAM MORRIS HUNT

AMERICAN: 1824—1879

SAND-BANK AND WILLOWS, MAGNOLIA, MASSACHUSETTS

Height, 24 inches; length, 42 inches

THE lower part of canvas is occupied by a wide stretch of sand dunes, with willows growing on the crest above. All this is in shadow, while beyond, seen through the open spaces, are a sandy beach, an arm of the sea and a headland bathed in sunlight. The figures of two children, at the extreme right, are in silhouette against this sunny exposure.

No. 76: Originally purchased by Wm. Macbeth at Mrs. S. D. Warren's Sale, January, 1903. Sold to and repurchased from Mr. John Robertson, Moosic, Pa. No. 77: Purchased by Macbeth from R. C. Vose, 320 Boylston Street, Boston.

Purchased from the sale of the effects of the artist, Boston, February, 1880, Catalogue No. 43.



No. 157

30 CD
HOMER D. MARTIN, N.A.

AMERICAN: 1836—1897

SARANAC LAKE

Height, 24½ inches; length, 40 inches

THE foreground depicts the shore of the lake, with a roadway bordering the water and forest trees on a hill-side at the left. The surface of the lake occupies the middle portion of the picture; on the right and beyond are mountains with three peaks outlined against the gray sky, in which are some small spaces of blue.

Signed at the lower left, and dated 1878.

Purchased from William Macbeth, New York, March 30, 1899. Certificate from William Macbeth states this painting was painted to order in 1878 for the late Dr. Mosher of Albany, N. Y., an intimate friend of Homer Martin. Purchased from Dr. Mosher's family by Mr. James Vint of Albany, one-time quarantine officer of New York, and from the latter purchased by Mr. Macbeth. Accompanied by a letter from Mrs. Martin, widow of the artist, dated March 31, 1899, certifying the authenticity of the painting.



No. 158

HENRY GOLDEN DEARTH, N.A.

AMERICAN: 1864—

70^d
A BRITTANY CHURCH

Height, 32 inches; length, 45 $\frac{3}{4}$ inches

THE green sward of the churchyard, bordered by stone walls, occupies the foreground and the church itself, with two or three houses close by, raises its graceful shape in the right center of the composition. The effect is of early evening, the upper part of the church and its spires being illumined with a pinkish glow from the sinking sun. The sky of pale blue with white clouds and the moon, rising at the extreme right, complete the picture.

Signed at the lower right.

Purchased direct from the artist, New York, 1910.



No. 159

GEORGE FULLER, A.N.A.

AMERICAN: 1822—1884

15600
GIRL AND TURKEYS

Height, 30 inches; length, 50 inches

IN a foreground of meadows with a border of woods on the left and a hut, near the middle of the picture, is the figure of a girl whose arms are extended in a gesture of gently driving a flock of turkeys. Above is a sky of gray clouds. This well-known work exhibits the characteristic handling of the celebrated American artist as well as his distinctive qualities of color.

Signed at the lower left. On back: "Copyright, 1884, by the Estate of the late George Fuller, Boston."

Purchased from William Macbeth, New York, April 2, 1904, who purchased the painting from Williams & Everett, Boston, as agents of the owner, a Mr. Jewett of Brookline, Mass.

Illustrated in the Memorial Volume of Mr. Fuller's work, and listed as being painted in 1884, the year the artist died.



No. 160

PAUL DOUGHERTY, N.A.

AMERICAN: 1877—

AN AISLE OF THE SEA

Height, 36 inches; length, 48 inches

217
GREAT masses of jagged rocks, standing up on the right and left of this composition, form a sort of passage-way through which the waters of the ocean are seen rushing tumultuously, while spray is thrown up against the rocks and the surf boils in the foreground. Sunlight falls from the left, emphasizing the color in the central portion of the picture, and the heavy shadows of the foreground contain reflected light as well as a glint of sunshine.

Signed at the lower left, and dated 1910.

Purchased direct from the artist, New York, 1912.



No. 161

ARTHUR B. DAVIES

AMERICAN: 1862—

A LAKE IN THE SIERRAS

Height, 18 inches; length, 40 inches

177
THE lake, which gives the picture its title, is seen lying deep down amid the mountain slopes, the view of it obscured considerably by the trunks of giant trees which rise from the foreground and by masses of foliage. These frame in, in the middle of the composition, a view of the mountain ranges with distant, lofty peaks and a sky with clouds illumined by a sinking sun.

Signed at the lower left.

Purchased from William Macbeth, New York, 1907.

No. 162

HENRY WARD RANGER, N.A.

AMERICAN: 1858—1916

177
(*SEPTEMBER GALE: NOANK HARBOR*

Height, 28 inches; length, 36 inches

IN the foreground at the right and on a headland jutting out in the sea are the buildings of the town; in the waters near the shore are anchored, or tied, a number of small sailboats. The waters extend beyond to the horizon and above is a stormy sky with black, lowering clouds in the upper portion. Some color notes of red and accents of white in the buildings relieve the sombre general tone of the picture.

Signed at the lower left, and dated 1904.

Purchased direct from the artist, New York, 1905.

No. 163

HENRY GOLDEN DEARTH, N.A.

AMERICAN: 1864—

LOVE AMONG THE RUINS

Height, 35 inches; length, 46 inches

THE composition shows in the middle portion *pièces d'eau*, one above the other, and on either side groups of men and women in brilliant costumes seated on the grass, or gathered about a temple, which appears on the right amid tall trees in rich red autumn foliage. On the left are two or three other trees, and in the vista beyond appear the forms of hills and belts of forest—all similarly tinged with the reddish glow. Above is an evening sky of warm yellow blue, broken with masses of pink gray clouds.

Signed at the lower right.

Purchased direct from the artist, New York, 1907.

No. 164

ELLIOTT DAINGERFIELD, N.A.

AMERICAN: 1859—

MOUNTAIN SHOWERS

Height, 30 inches; length, 45 inches

THE lower part of the picture is occupied by a great hillock, over the brow of which, on the left, appears a range of mountains. Hanging over the valley is a horizontal cloud with rain descending from it into the valley below. The sky toward the right of the picture shows broken clouds with a space of blue.

Signed at the lower right, and dated 1906.

Purchased direct from the artist, New York, 1907.

No. 165

JULIAN RIX

AMERICAN: 1851—1903

1212
SUNNY AFTERNOON, POMPTON VALLEY

Height, 30 inches; length, 40 inches

LEVEL meadows and pasture lands, with a small stream in the left foreground; on the right, a fine oak in brown autumn foliage and other trees beyond. Above the low horizon is a high sky of blue with masses of clouds tinged by the sunlight. Part of the foreground is in shadow, and other shadows are so placed in the picture as to make effective the masses of foliage of the oak tree shining in the sun.

Signed at the lower right, and dated 1899.

Purchased direct from the artist, New York, 1899.





No. 166

BEN FOSTER, N.A.

AMERICAN: 1852—

A MEMORY

Height, 36 inches; length, 42 inches

THROUGH a ravine in the foreground runs a stream with quiet waters; at the left a forest on a hill-side. In the upper part of the picture an evening sky is seen through the foliage, and its rosy tints are reflected in the water.

Signed at the lower left.

Purchased direct from the artist, New York, 1902.

113018
432111
186.3011

**LIST OF ARTISTS REPRESENTED
AND THEIR WORKS**

LIST OF ARTISTS REPRESENTED
AND THEIR WORKS

	CATALOGUE NUMBER
<i>BEAL, REYNOLDS, N.A.</i>	
Off New London	54
 <i>BLAKELOCK, RALPH ALBERT, N.A.</i>	
Summer—Catskills	4
Indian Hunter	84
The Wayfarers	85
Early Evening	113
 <i>BRUSH, GEORGE DE FOREST, N.A.</i>	
Boy with a Green Cap	92
Girl's Head	99
 <i>BUCKLIN, W. S.</i>	
Early Spring Morning	67
 <i>BUNCE, WILLIAM GEDNEY, N.A.</i>	
Venice—Moonlight	118
Sunset—Venice	155
 <i>CHAPMAN, CARLTON T., N.A.</i>	
The Lighthouse	13
 <i>CHASE, WILLIAM MERRITT, N.A.</i>	
Near Bay Ridge	105
 <i>CHURCH, FREDERICK S., N.A.</i>	
Spring Song	31
A Surf Phantom	38

	CATALOGUE NUMBER
COLMAN, SAMUEL, <i>N.A.</i>	
Saw Mill River	59
COMAN, CHARLOTTE BUELL, <i>A.N.A.</i>	
In the Fall of the Year	41
CRANE, BRUCE, <i>N.A.</i>	
Evening	7
CURRAN, CHARLES COURTNEY, <i>N.A.</i>	
Girl with Violin	49
DAINGERFIELD, ELLIOTT, <i>N.A.</i>	
The Drama of the Mountain Tops	60
Sunset—Mists and Shadows	77
Dead Trees	79
The Forest of Latmos	148
Mountain Showers	164
DAVIES, ARTHUR B.	
A Lake in the Sierras	161
DAVIS, CHARLES HAROLD, <i>N.A.</i>	
Sunset on the Moor	16
Summer Clouds	43
The Awakening of Spring	140
DEARTH, HENRY GOLDEN, <i>N.A.</i>	
Passing of the Wave	10
Gray Weather	19
Brittany Coast	32
Anemone Pool	42
Through the Beeches	68
The Emerald Pool	101

DEARTH, HENRY GOLDEN—*Continued*

The Three-master	111
A Gray Day, Boulogne-sur-Mer	120
Love among the Ruins	163
The Brook	150
A Brittany Church	158

DESSAR, LOUIS PAUL, *N.A.*

Nocturne—Moonrise with Sheep	65
The Return—Evening	71
Moonlight	122
Hauling the Winter's Wood	139
Changing Pasture—October	145

DOUGHERTY, PAUL, *N.A.*

The Incoming Tide	70
Easterly Storm—Boar's Head	74
Mid-Island Gorge	75
Cornwall Rocks	82
Evening after the Rain	127
Gold and Gloom	134
Black Head, Monhegan Island	149
The Wave and the Cloud	152
An Aisle of the Sea	160

EAKINS, THOMAS, *N.A.*

Professionals at Rehearsal	9
----------------------------	---

FOOTE, WILL HOWE, *A.N.A.*

The Old Bridge	53
----------------	----

FOSTER, BEN, *N.A.*

A Murky Evening	81
A Memory	166

FULLER, GEORGE, <i>A.N.A.</i>	
Shearing the Donkey	93
Ideal Head	125
Girl and Turkeys	159
GIFFORD, R. SWAIN, <i>N.A.</i>	
Solitude	17
HASSAM, CHILDE, <i>N.A.</i>	
Messenger Boy	5
Across the Park	11
On the Avenue in Winter	40
HAWTHORNE, CHARLES WEBSTER, <i>N.A.</i>	
Along the River	15
The Grand Canal—Venice	33
HITCHCOCK, GEORGE, <i>A.N.A.</i>	
Windmill and Geese	36
The Dunes, Holland	72
HOMER, WINSLOW, <i>N.A.</i>	
A Wreck near Gloucester	102
Perils of the Sea	115
Sailing Out of Gloucester Harbor	117
The Turkey Buzzard	129
A Voice from the Cliffs	133
HOWE, WILLIAM HENRY, <i>N.A.</i>	
On the Marshes—Holland	35
Young Vagabonds	52
HUNT, WILLIAM MORRIS	
Head of a Spanish Girl	25
Old Mexico	47
Sand-bank and Willows, Magnolia, Massachusetts	156

	CATALOGUE NUMBER
INNESS, GEORGE, N.A.	
Leeds, New York	90
Near Montclair	128
Returning from Pasture—Milton	135
One the Sainte-Croix River, Canada	146
INNESS, GEORGE, JR., N.A.	
In the Cool of the Evening	44
JONES, HUGH BOLTON, N.A.	
Near Orange, New Jersey	55
KOST, FREDERICK W., N.A.	
The Driftwood Gatherer	63
LA FARGE, JOHN, N.A.	
Bridle Path—Tahiti	116
LOEB, LOUIS, N.A.	
Byblis	6
MARTIN, HOMER D., N.A.	
Low Tide—Honfleur	20
Lighthouse—Honfleur	86
Ruby Strong—Normandy	95
Moonlit Pond—Honfleur	96
The Dunes	100
Indian Summer	107
Autumn on the Susquehanna	123
Saranac Lake	157
MINOR, ROBERT C., N.A.	
Early Autumn	108

MORAN, THOMAS, <i>N.A.</i>	
A Venetian Fiesta	50
The Mountain of Loadstone (<i>Arabian Nights</i>)	57
In the Teton Range—Idaho	64
MOSLER, HENRY	
Good-Night	1
MURPHY, J. FRANCIS, <i>N.A.</i>	
Early Autumn	8
The Woods	87
Sunset	88
The River	91
October Afternoon	98
Changing Maples	104
Springtime in the Catskills	112
Approach to the Old Farm	119
Afterglow—October	137
OCHTMAN, LEONARD, <i>N.A.</i>	
Autumn Twilight	80
PARRISH, STEPHEN	
Market-Place, Yvetôt, Normandy	3
PARTON, ARTHUR, <i>N.A.</i>	
The Passing Shower	61
PAULI, RICHARD	
A Gray Day	22
PETERS, CHARLES ROLLO	
San Juan Mission	78
POTTHAST, EDWARD H., <i>N.A.</i>	
Off the Grand Banks	58
The Village Carpenter	62

RANGER, HENRY WARD, N.A.

Spring—East Lyme	45
Valley of the Somme	51
Cloud and Sea—Porto Rico	66
Peaceful Moonlight Reigns	69
A Classic—Mason's Island	76
Golden Evening: Noank Harbor	130
Clearing Fires	138
Cloud and Sunshine: Near an Old Quarry, New England	141
Becky Cole's Hill	147
The Last of Spring	151
Sentinel Rock	154
September Gale: Noank Harbor	162

REHN, FRANK KNOX MORTON, N.A.

In Mid-Ocean	26
Marine	39

RIX, JULIAN

The Quarry	23
Singac Meadows	34
Edge of the Wood	48
Northern Lake, New Brunswick, Canada	131
Sunny Afternoon, Pompton Valley	165

ROBINSON, THEODORE

The Thatched Cottage	103
Twachtman's House	114
Gathering Plums	121

RYDER, ALBERT PINKHAM, N.A.

Twilight	89
----------	----

SARTAIN, WILLIAM, <i>A.N.A.</i>	
Italienne	24
Arab Camp—Outside the Walls	37
The Cloud	46
An Arab School in Algiers	56
SCHOFIELD, WALTER ELMER, <i>N.A.</i>	
A Breezy Day, Early Autumn	73
SMILLIE, GEORGE HENRY, <i>N.A.</i>	
At East Gloucester	30
SNELL, HENRY BAYLEY, <i>N.A.</i>	
Twilight at Sea	83
TRYON, DWIGHT WILLIAM, <i>N.A.</i>	
Moonrise—October	94
Across the Fields—November	126
TWACHTMAN, JOHN HENRY	
The Frozen Brook	132
Rapids in the Yellowstone	142
WALKER, HORATIO, <i>N.A.</i>	
The End of the Day	12
Girl Feeding Turkeys	143
Moonrise—A Canadian Pastoral	153
WHITTREDGE, WORTHINGTON, <i>N.A.</i>	
A Village by the Sea	29
WIGGINS, CARLETON, <i>N.A.</i>	
The Storm	14

WILLIAMS, FREDERICK BALLARD, *N.A.*

The Quiet Hour	2
Valley of the Passaic	28
Halcyon Days	110

WYANT, ALEXANDER H., *N.A.*

A Gray Day	18
Killarney	21
County Kerry, Ireland	27
Evening—Early Autumn	97
The Old Sand Road	106
A Brook in the Catskills	109
Nightfall	124
The Dawn	136
Keene Valley	144

FOR INHERITANCE TAX

AND OTHER PURPOSES

THE AMERICAN ART ASSOCIATION

IS EXCEPTIONALLY WELL EQUIPPED
TO FURNISH

INTELLIGENT APPRAISEMENTS

OF

ART AND LITERARY PROPERTY
JEWELS AND PERSONAL EFFECTS OF EVERY
DESCRIPTION

IN CASES WHERE

PUBLIC SALES ARE EFFECTED

A NOMINAL CHARGE ONLY WILL BE MADE

THE AMERICAN ART ASSOCIATION

MADISON SQUARE SOUTH
NEW YORK

TELEPHONE, 3346 GRAMERCY

COMPOSITION, PRESSWORK
AND BINDING BY







