

CAPE COD

NANTUCKET

MARTHAS VINEYARD

The **NEW HAVEN** *R.R.*

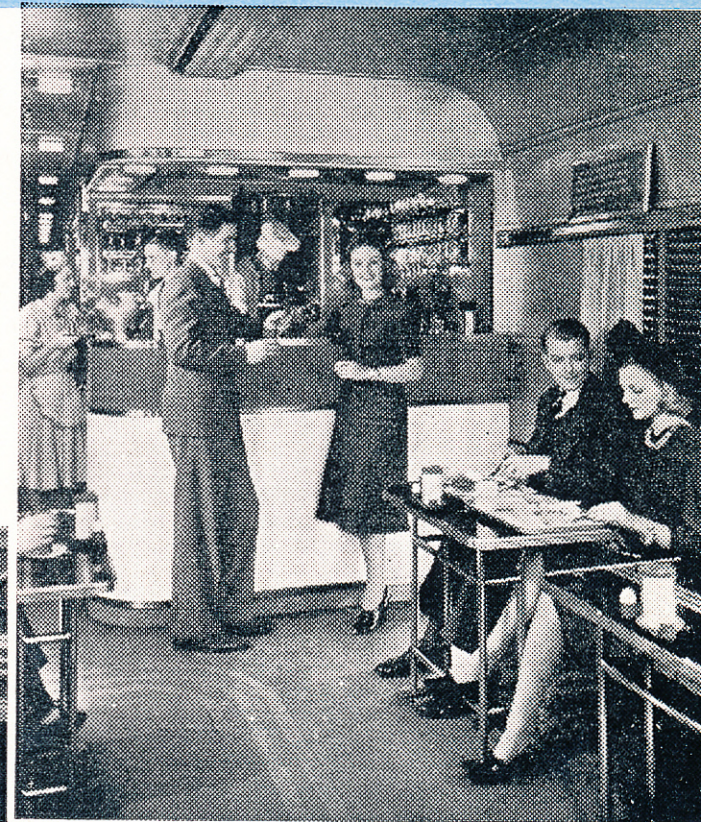
Direct AIR CONDITIONED Through Train Service between

NEW YORK AND CAPE COD POINTS

With Steamer Connections TO and FROM MARTHA'S VINEYARD—NANTUCKET



Four splendid through trains bring cool Cape Cod weather right down to New York to meet you. Your vacation truly begins when you step into the air-conditioned luxury of Pullman chair or sleeping cars . . . or the smartly modern comfort of air-conditioned Streamlined Coaches.



Visit the Grill Car, where you may order anything from a cup of coffee to a complete meal, from an ice cream soda to a whiskey and soda . . . all at low cafeteria prices.

Dine in refreshingly new COLONIAL DINERS. New Haven Dining Service is famous throughout New England for delicious food courteously and efficiently served.

THESE TRAINS DO NOT HANDLE LOCAL PASSENGERS BETWEEN NEW YORK AND PROVIDENCE EFFECTIVE JULY 21, 1940

EASTBOUND TABLE A	DAY CAPE CODDER	ISLANDER	NEPTUNE	NIGHT CAPE CODDER	WESTBOUND TABLE A	DAY CAPE CODDER	ISLANDER	NEP- TUNE	NIGHT CAPE CODDER
	DAYS OF OPERATION LISTED BELOW					DAYS OF OPERATION LISTED BELOW			
	A.M.	P.M.	P.M.	◆P.M.		A.M.	P.M.	P.M.	◆P.M.
Washington.....Lv	4915	Hyannis.....Lv.	9 30	4 40	9 30
Baltimore.....	5900	Yarmouth.....Lv.	9 36	4 46	9 39
North Philadelphia.....	6946	Barnstable.....	9 41	9 46
G. C. T.....Lv.	8 50	2 45	2 50	11 30	West Barnstable.....	9 47	4 56	9 54
New York 125th St.....	9 00	Sandwich.....	9 58	10 09
Penna. Sta.....	Buzzards Bay.....Due	10 09	5 17	10 23
Stamford.....	9 35	Nantucket.. (Steamer) ..Lv.	6 00	1 00	1 30	4 00
New Haven.....	10 20	4 18	4 25	1 25	Oak Bluffs.....	8 15	3 00	3 30	6 00 8d00
New London.....	11 15	Woods Hole... " ..Due	9 15	4 00	4 30	6 45 8d45
Providence.....	12 20	6 29	6 40	New Bedford Wharf.....Due	8:00
Taunton.....Due	1 00	7 19	New Bedford Wharf.....Lv.	8:35
Wareham.....	1 36	7 56	5 41	New Bedford.....	9:00
Onset.....	1 41	8 00	Taunton.....Due	9:26
Buzzards Bay.....Due	1 47	7 53	8 06	5 50	Woods Hole.....Lv.	9 30	4 30	4 45	9 35
Buzzards Bay.....Lv.	1 53	7 55	8k13	6 27	Falmouth.....	9 37	4 37	4 52	9 43
Monument Beach.....	1 57	West Falmouth.....	9 44	9 51
Pocasset.....	2 01	8 01	8k19	6 36	North Falmouth.....	9 51
Cataumet.....	2 05	Pocasset.....	9 54
North Falmouth.....	2 08	Monument Beach.....	9 58	4 52	5:07	10 07
West Falmouth.....	2 15	7 00	Buzzards Bay.....Due	10 02	5 00	5:14	10 15
Falmouth.....	2 23	8 15	8k33	7 08	Buzzards Bay.....Lv.	10 08	5 02	5 21	10 30
Woods Hole.....Due	2 30	8 25	8k40	7 15	Onset.....	10 21	5 27
Woods Hole.. (Steamer) ..Lv.	2 50	8 30	8k45	7 30	Wareham.....	10 28	5 31	10 42
Oak Bluffs.....Due	3 50	9 15	9k30	8 20	Taunton.....Lv.	11 08	6 12	11:40
Nantucket... " ..Due	6 00	11 15	10 35	Providence.....Due	11 44	6 25	6 51
Buzzards Bay.....Lv.	1 56	8 10	5 55	New London.....	12 50	2 33
Sandwich.....Due	2 13	6 14	New Haven.....	1 44	8 36	9 02	3 50
West Barnstable.....	2 24	8 33	6 23	Stamford.....	2 30	9 23	9 50	5 19
Barnstable.....	2 29	8 44	6 30	New York Penna. Sta.....	4:12
Yarmouth.....Due	2 34	6 37	New York 125th St.....	3 05	9 59	10 27	5 58
Hyannis.....Due	2 40	8 50	6 45	G. C. T.....	3 15	10 10	10 38	6 10
	P.M.	P.M.	P.M.	A.M.	North Philadelphia.....Due	5:57	8<49
					Baltimore.....	7:36	10<22
					Washington.....Due	8:20	11<05
						P.M.	P.M.	P.M.	A.M.

ALL TIMES SHOWN ARE EASTERN STANDARD TIME

DAY CAPE CODDER

DAYS AND DATES OF OPERATION

EASTBOUND—(LEAVING NEW YORK)

Daily, until September 7; then Mondays, Wednesdays and Fridays, Sept. 9 to 20, incl

Parlor Lounge Car New York to Hyannis.
Parlor Car.....New York to Woods Hole.
Dining Car.....New York to Woods Hole.
Grill Car.....New York to Hyannis (Fridays only).
Reclining Seat Coaches.....New York to Hyannis (Except Fridays).
Reclining Seat Coaches.....New York to Hyannis. New York to Woods Hole.

WESTBOUND—(LEAVING WOODS HOLE AND HYANNIS)

Daily, until September 8, incl.; then Tuesdays, Thursdays and Saturdays, September 10 to 21, incl.

Parlor Lounge Car Hyannis to New York (Ex. Sundays).
Parlor Car.....Woods Hole to New York (Ex. Sundays).
Dining Car.....Woods Hole to New York.
Grill Car.....Hyannis to New York (Except Sundays).
Reclining Seat Coaches.....Hyannis to New York. Woods Hole to New York.

THE ISLANDER

DAYS AND DATES OF OPERATION

Fridays only, until August 30, incl.

Sundays only, until August 25, incl. Also Monday, September 2

★THROUGH CAR SERVICE

Sleeping Cars (Day Service)—New York to Woods Hole.
Dining Car.....New York to Woods Hole.
Grill Car.....New York to Woods Hole.
Coaches.....New York to Woods Hole.

Parlor Car.....Woods Hole to New York.
Dining Car.....Woods Hole to New York.
Grill Car.....Woods Hole to New York.
Coaches.....Woods Hole to New York.

THE NEPTUNE

DAYS AND DATES OF OPERATION

Fridays only until September 20, incl.

Sundays only, until September 22, incl. Runs Monday, September 2, instead of Sunday, September 1.

★THROUGH CAR SERVICE

Sleeping Cars (Day Service).....New York to Hyannis.
Sleeping Car (Day Service) (Note A).....New York to Woods Hole.
Dining Car.....New York to Hyannis.
Grill Car.....New York to Hyannis.
Grill Car (Note A).....New York to Woods Hole.
Coaches.....New York to Hyannis.
Coaches (Note A).....New York to Woods Hole.

Parlor Lounge Car.....Hyannis to New York.
Parlor Car (Note B).....Woods Hole to New York.
Dining Car.....Hyannis to New York.
Grill Car.....Hyannis to New York.
Grill Car (Note B).....Woods Hole to New York.
Coaches.....Hyannis to New York.
Coaches (Note B).....Woods Hole to New York.

NIGHT CAPE CODDER

DAYS AND DATES OF OPERATION

Daily except Sundays, until September 13, incl., also Friday, September 20.

Daily except Fridays and Saturdays, until September 15, incl., also Sunday, September 22.

★THROUGH CAR SERVICE

Sleeping Cars.....New York to Woods Hole.
New York to Hyannis.
Washington to Hyannis (Fridays only until Sept. 13, incl.).

Sleeping Cars.....Woods Hole to New York. Hyannis to New York.
Hyannis to Washington (Sundays only until Sept. 15, incl. Runs Mon., Sept. 2, instead of Sun., Sept. 1.)
Dining Car.....Woods Hole to Providence, Sundays only.
Reclining Seat Coaches.....Hyannis to New York.

Note "A"—Runs only on Fridays, Sept. 6, 13 and 20.

★ Regularly assigned cars AIR-CONDITIONED.
◆ No baggage service on this train.
< Mondays only.
♀ Fridays only.
♁ Sundays only.

a Passengers enroute to New York (Penna Station), North Philadelphia, Baltimore or Washington transfer at Providence to train 177, The Senator, leaving at 12 00 N'ON d Sundays only, until Aug. 25, incl.; also Monday, Sept. 2 and Sunday, Sept. 8.
k Runs only on Fridays, Sept. 6, 13 and 20. Boat terminates at Vineyard Haven due 9 30 P.M.

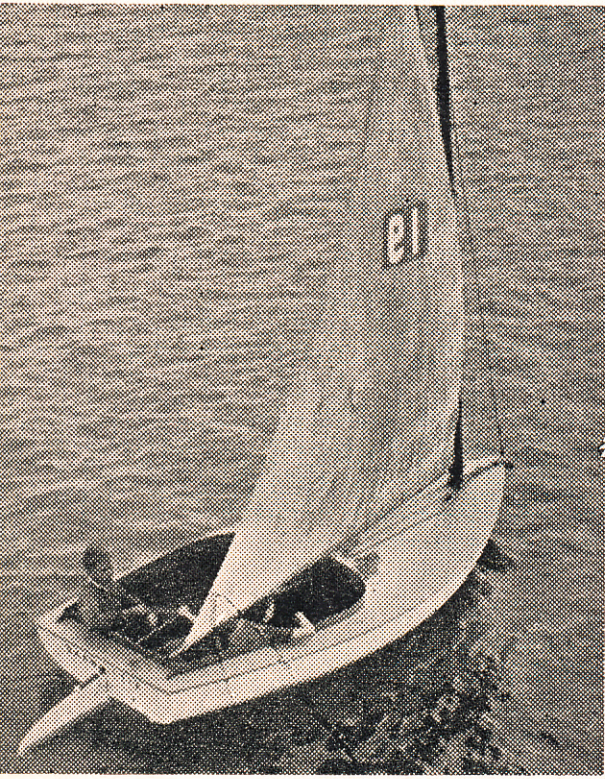
Note "B"—Runs only on Sundays, Sept. 8, 15 and 22.

z Runs only on Sundays, Sept. 8, 15 and 22.
Sleeping Cars open for occupancy at New York 9 00 P.M., Woods Hole 7 15 P.M., Hyannis 9 00 P.M. and may be occupied at New York until 6 30 A.M.

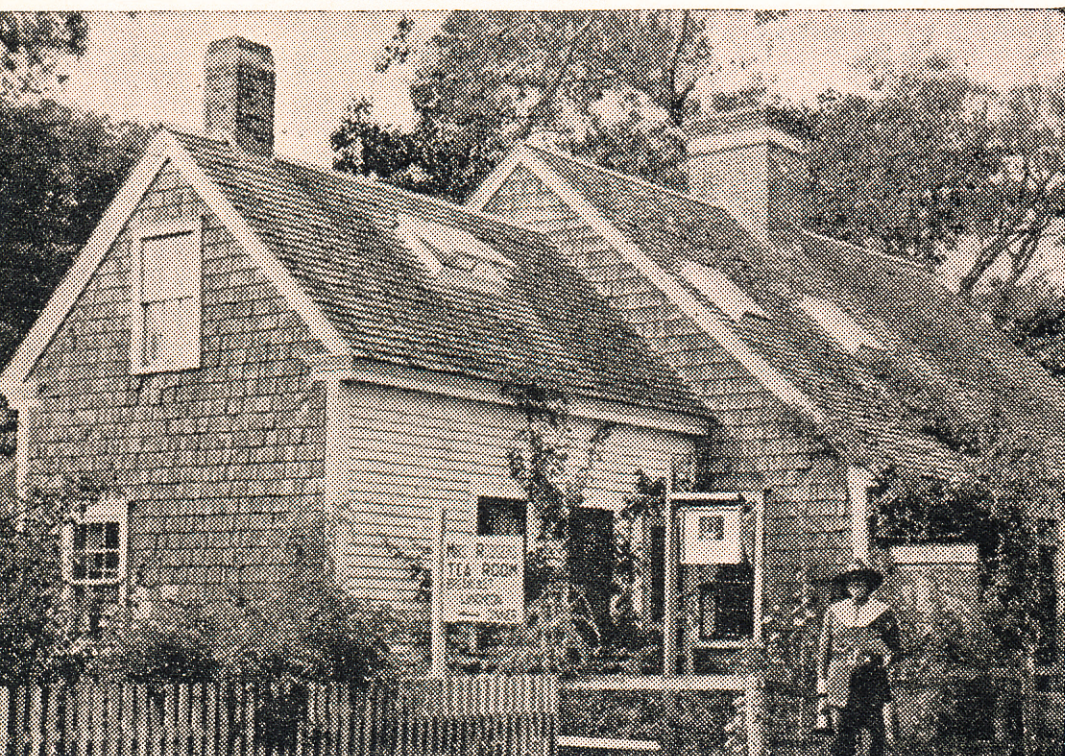
Enjoy Romantic New England

Romantically quaint and deliciously cool all summer long, Cape Cod, Martha's Vineyard and Nantucket provide a vacation world of unequalled charm.

Here, tall elms line the village streets, while grouped around the green are picturesque cottages, colorful fenced-in gardens, stately Georgian mansions, gleaming church steeples piercing the blue sky. Here, swept by tangy sea air are miles of safe, sandy beaches, clear temperate waters, rolling sand dunes, gleaming light houses, harbors gay with pleasure craft . . . landscapes dotted with weathered old Cape Cod homes,



here and there a quaint old windmill turning slowly in the breeze. Friendly inns and splendid hotels provide a whirl of scintillating resort life . . . or, if you prefer, opportunity for quiet relaxation in dreamy solitude. For the gay, there are night clubs, summer theatres and starlit terraces. For all, enchanted days and nights in a vacationland where the great Atlantic charges in for mile on mile, from Buzzards Bay and Cape Cod Bay to the tip of quaint old Provincetown. Come and enjoy this uniquely enticing world this summer — come by train, quickly and safely by the New Haven Railroad in perfect, air-conditioned comfort, at only 2c a mile in coaches!



THE **NEW HAVEN** R. R.

2

LOW COACH FARES • PULLMAN FARES

To Cape Cod—Martha's Vineyard and Nantucket

FROM NEW YORK TO	ONE WAY FARES		
	IN COACHES	IN PULLMAN	
		In- cluding Chair	Including Lower Berth
Barnstable	\$5.20	\$9.20	\$10.45
Buzzards Bay	4.80	8.50	9.85
Falmouth	5.10	9.05	10.30
Hyannis	5.30	9.40	10.60
Nantucket (a)	6.90	10.90*	12.15#
Oak Bluffs (a)	5.80	9.80*	11.05#
Onset	4.75	8.45	9.80
Pocasset	4.90	8.70	10.00
Sandwich	5.00	8.80	10.10
Taunton	4.20	7.45	8.95
Vineyard Haven(a)	5.80	9.80*	11.05#
Wareham	4.70	8.35	9.70
West Barnstable	5.15	9.10	10.35
West Falmouth	5.00	8.85	10.15
Woods Hole	5.15	9.15	10.40
Yarmouth	5.25	9.25	10.50

(a) Via Woods Hole.
 *Seat to Woods Hole.
 #Lower Berth to Woods Hole.

78-7.40-25M

THE NEW HAVEN R.R.