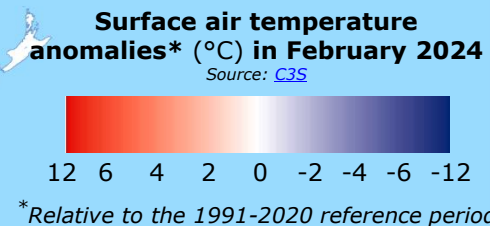
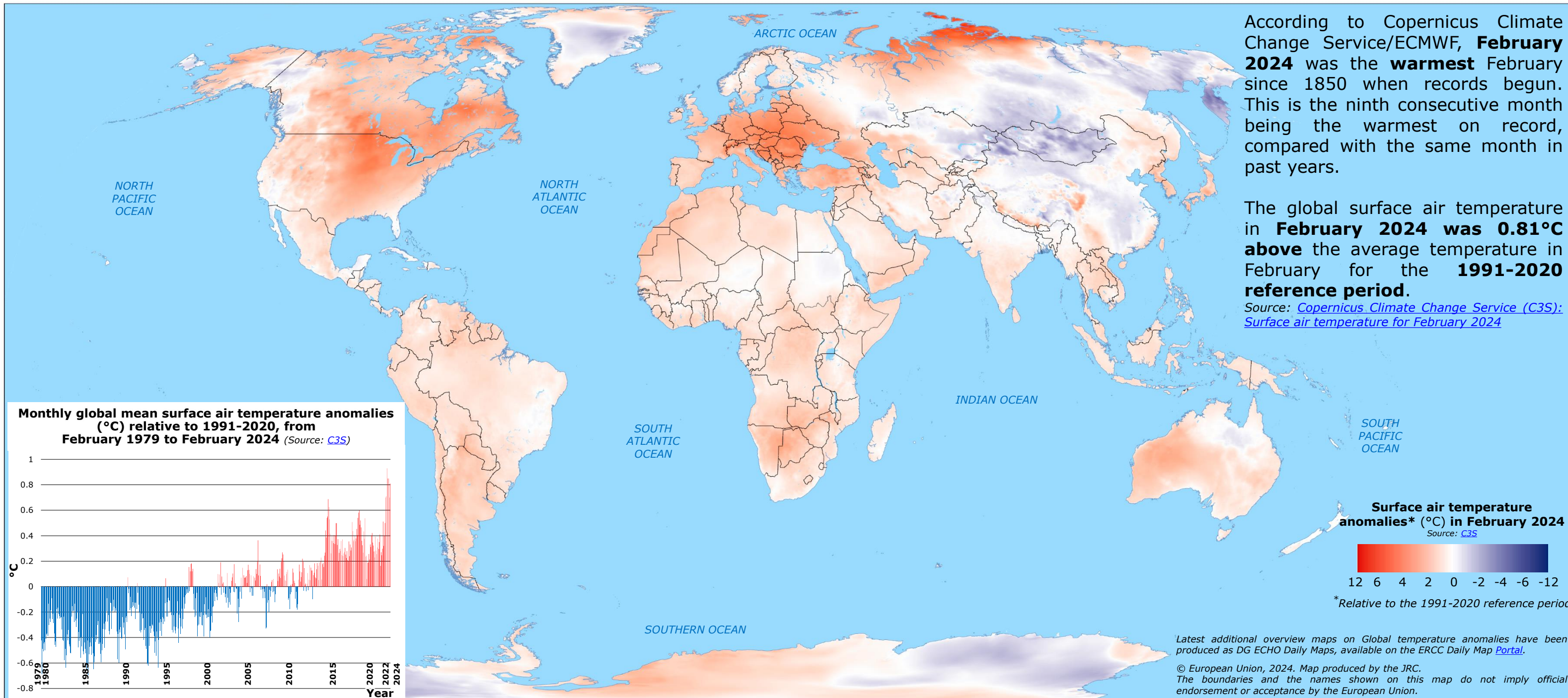


# World | Temperature anomalies in February 2024

According to Copernicus Climate Change Service/ECMWF, **February 2024** was the **warmest** February since 1850 when records began. This is the ninth consecutive month being the warmest on record, compared with the same month in past years.

The global surface air temperature in **February 2024** was **0.81°C above** the average temperature in February for the **1991-2020 reference period**.

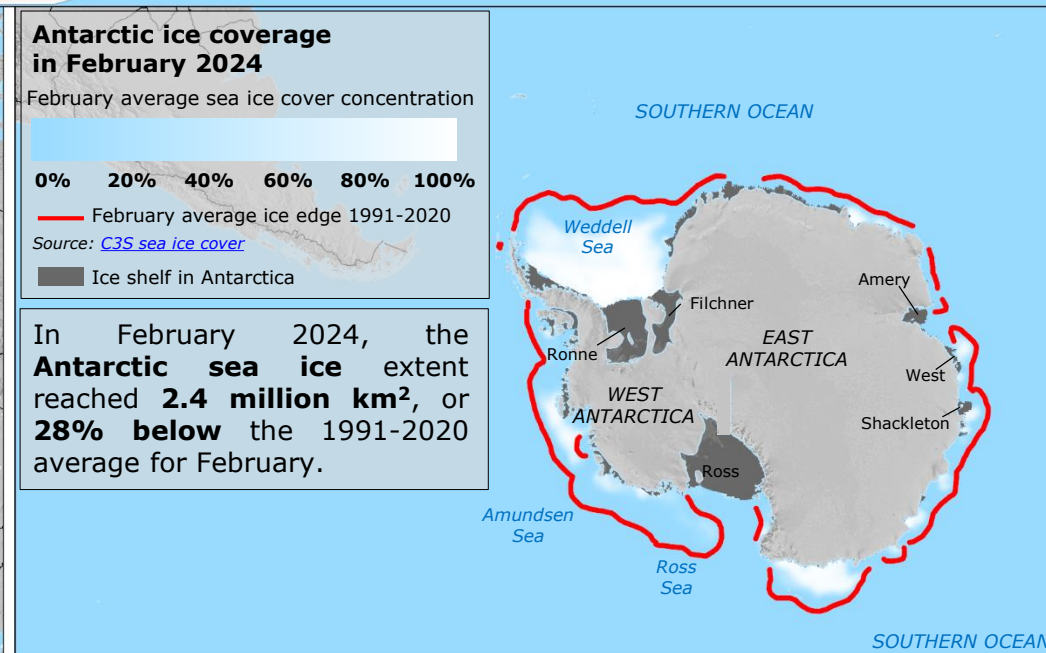
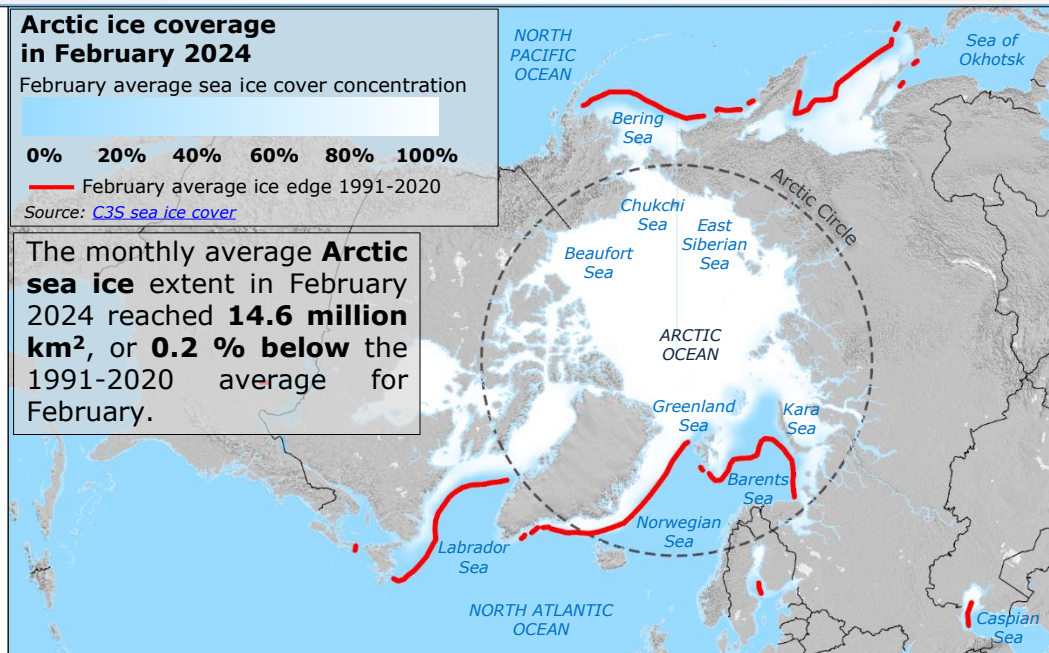
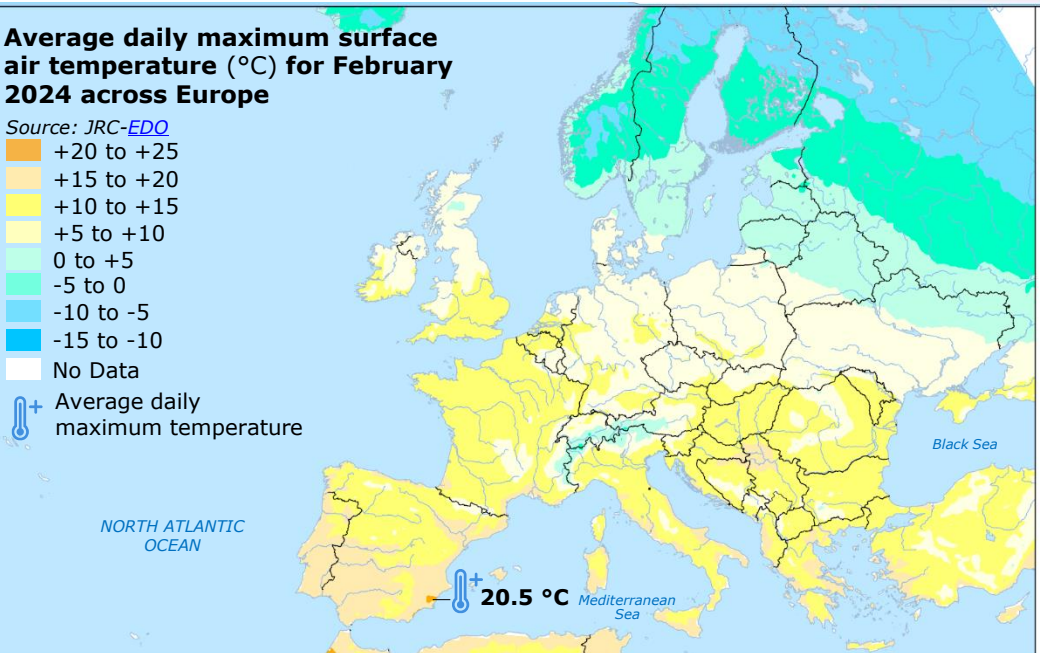
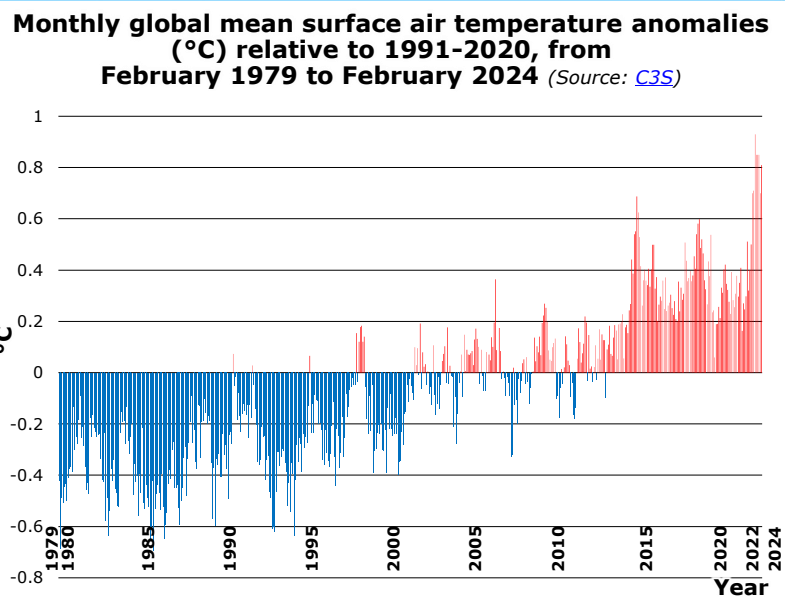
Source: [Copernicus Climate Change Service \(C3S\): Surface air temperature for February 2024](#)



\*Relative to the 1991-2020 reference period

Latest additional overview maps on Global temperature anomalies have been produced as DG ECHO Daily Maps, available on the ERCC Daily Map [Portal](#).

© European Union, 2024. Map produced by the JRC. The boundaries and the names shown on this map do not imply official endorsement or acceptance by the European Union.



The monthly average **Arctic sea ice** extent in February 2024 reached **14.6 million km<sup>2</sup>**, or **0.2 % below** the 1991-2020 average for February.

In February 2024, the **Antarctic sea ice** extent reached **2.4 million km<sup>2</sup>**, or **28% below** the 1991-2020 average for February.