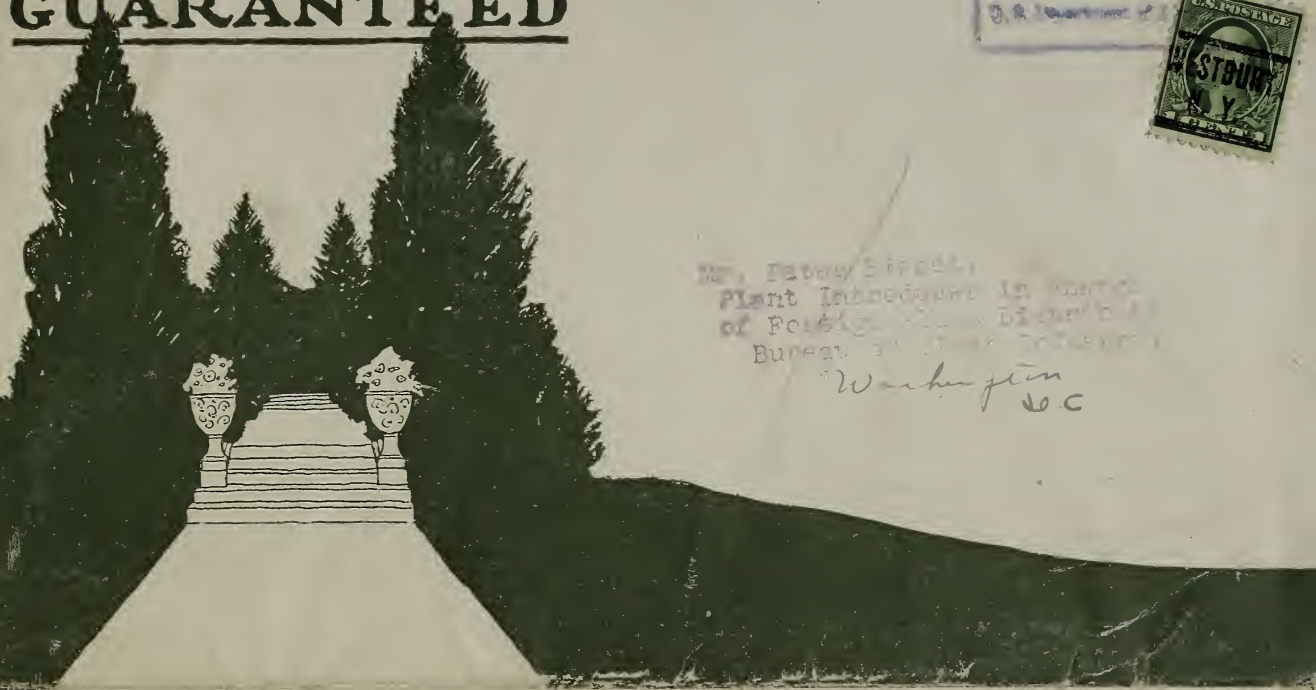
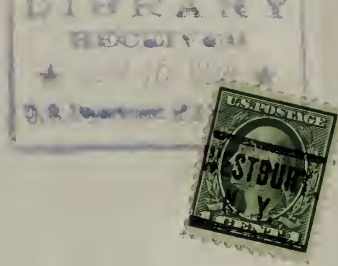


Historic, Archive Document

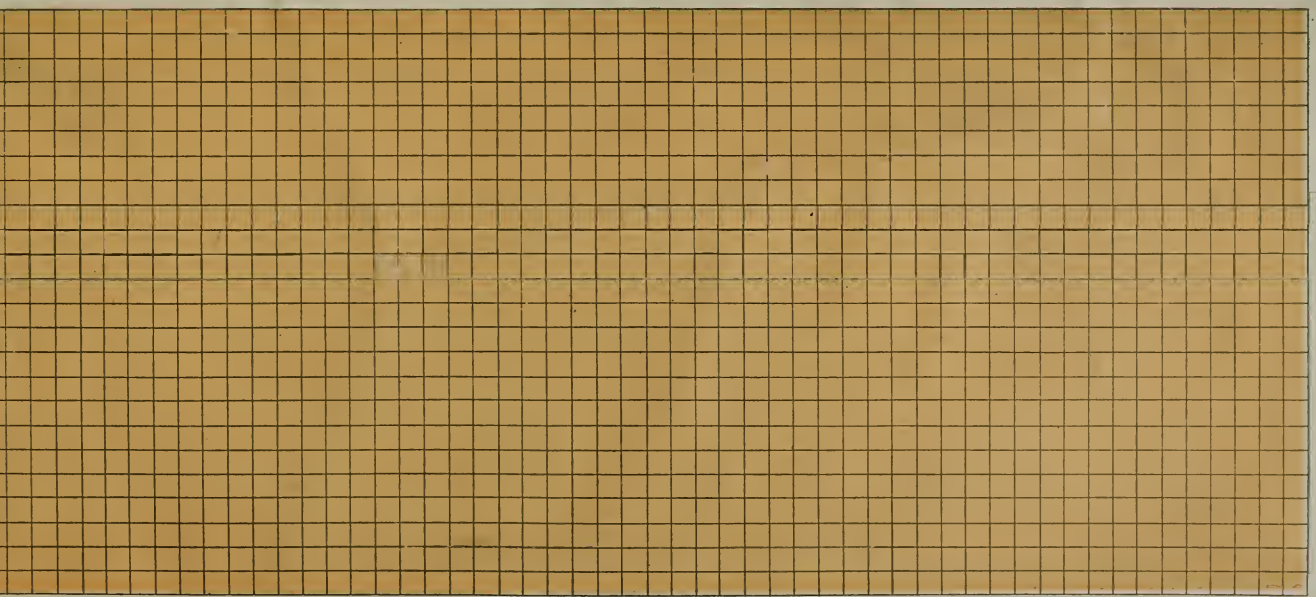
Do not assume content reflects current scientific knowledge, policies, or practices.

62.5
N 1321.5

EVERGREENS GUARANTEED

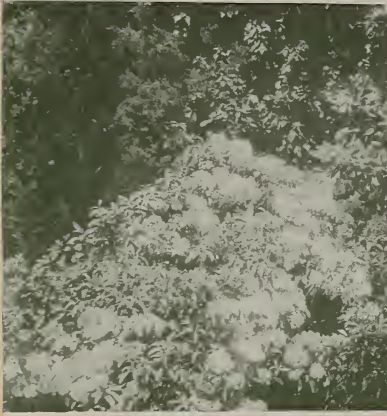


Mr. Fawcett Street,
Plant Introduction in Charge
of Foreign Plant Disposition
Bureau of Plant Industry
Washington
D.C.



You will find it easy with this sheet to indicate your wishes. The roughest sort of sketch is graphic to us. Tell us if you want a layout for the foundation, a screen to the street, an enclosure for the garden or a hedge, and jot down the dimensions, and we will promptly tell you what to plant, and how to arrange it. A photograph will also help. Each square represents feet.

HICKS NURSERIES WESTBURY, L. I.



ATTRACTIVE FOUNDATIONS

No one who has pride in their home wants to think of any other kind. Where the home is occupied all the year, seasonal attractiveness does not meet the requirement. It is important to have plants that lend charm all the year. Evergreens will do this. You may need some advice regarding species and arrangement. It will please us to give it. We want you to have a treatment that shows better taste than usual. Send us a photo and a rough sketch and we will see that you get it. You may find the back page of this folder a convenience for dimensions and other details.

A Few
HICKS EV
Can Se



PRIVACY

is an asset of suburban life. Did you not expect it? Are you not entitled to it? Do you not propose to have it and have it all the time? Then, let us talk evergreens.

Without is the rumble of commerce; dust-polluted air; the weariness of continual motion; the inquisitive gaze of the passing crowds.

Within is the beauty of the trees; the music of birds and refreshing breezes; the glow of flowers; the reposeful atmosphere of a quiet lawn.

Between are Evergreens—a wall of Pines. No reason at all why you cannot have absolute privacy. Use the back page of this folder to give us the dimensions. We will look after the details.



Ways
EVERGREENS
Give You



**BEAUTY
EVERYWHERE**

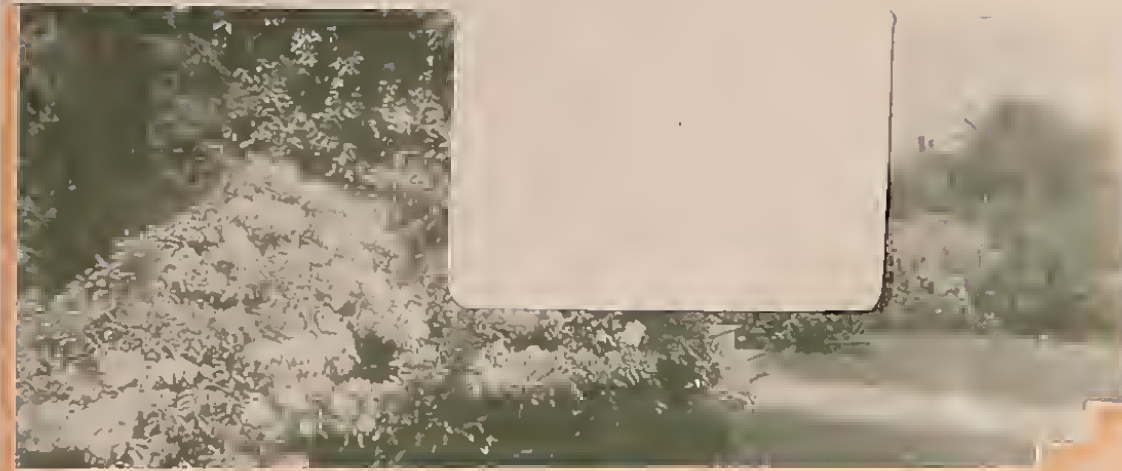
It is not necessary to have a landscape that calls for an apology every time your friends come in. You can have it attractive in every direction every month of the year. Evergreens will make it so. These pictures show how a group of pines converted an unhappy outlook into a vista of real beauty and they did it so effectively one needs to be told that the views were actually taken from the same place. They will do as much for you if you wish.

Your screening problems can be indicated on the back page of this folder.

GARDEN ENCLOSURES Much of the splendor of any garden is due to an appropriate back-ground. An enclosure high enough to give a feeling of security. It requires shadowy surroundings to give a garden an enjoyable atmosphere. Nothing could make a more beautiful enclosure than Evergreens. They intensify the radiance of the flowers. They calm the wind. They grow high enough to give real seclusion. A wide belt is more substantial both in appearance and in reality than a single row of trees. Pines are possibly the most ideal. They quietly interweave and make a harmonious and effective barrier against surveillance or intrusion.



**HICKS
NURSERIES**
WESTBURY, L. I.



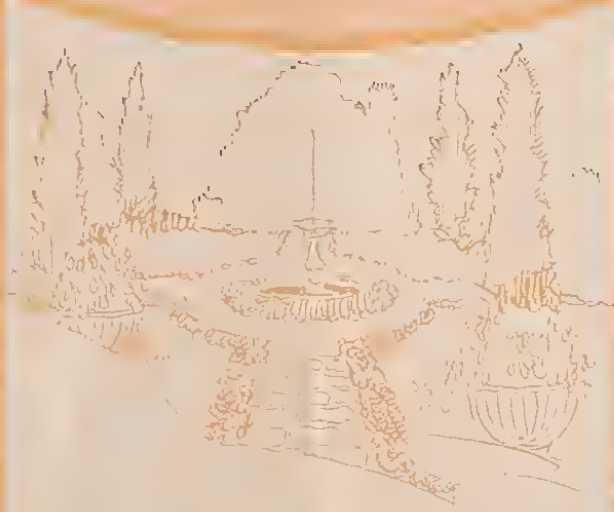
ATTRACTIVE FOUNDATIONS No one who has pride in their home wants to think of any other kind. Where the home is occupied all the year, Evergreens will do this. You may need some advice regarding species and arrangement. It will please us to give it. We want you to have a treatment that shows better taste than usual. Send us a photo and a rough sketch and we will see that you get it. You may find the back page of this folder a convenience for dimensions and other details.

**A Few Ways
HICKS EVERGREENS
Can Serve You**



PRIVACY

is an asset of suburban life. Did you not expect it? Are you not entitled to it? Do you not propose to have it and have it all the time? Then, let us talk evergreens. Without is the rumble of commerce; dust polluted air; the weariness of continual motion; the inquisitive gaze of the passing crowds. Within is the beauty of the trees; the music of birds and refreshing breezes; the glow of flowers; the reposeful atmosphere of a quiet lawn. Between are Evergreens—a wall of Pines. No reason at all why you cannot have absolute privacy. Use the back page of this folder to give us the dimensions. We will look after the details.



GARDEN ENCLOSURES Much of the splendor of any garden is due to an appropriate background. An enclosure high enough to give a feeling of seclusion. It requires shadowy surroundings to give a garden an enjoyable atmosphere. Nothing could make a more beautiful enclosure than Evergreens. They intensify the radiance of the flowers. They calm the wind. They grow high enough to give real seclusion. A wide belt is more substantial both in appearance and in reality than a single row of trees. Pines are possibly the most ideal. They quietly interweave and make a harmonious and effective barrier against surveillance or intrusion.

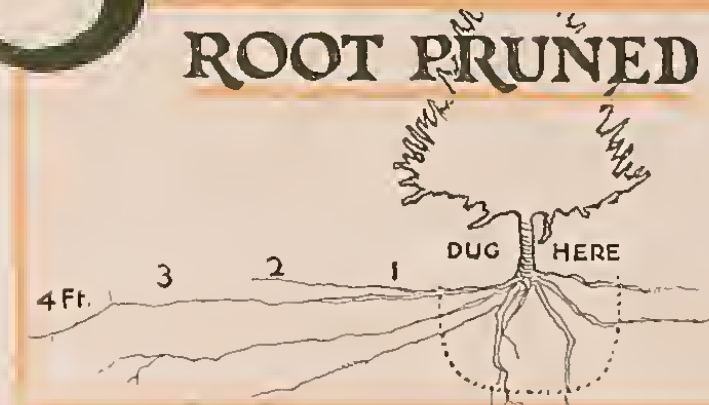


**BEAUTY
EVERYWHERE**

It is not necessary to have a landscape that calls for an apology every time your friends come in. You can have it attractive in every direction every month of the year. Evergreens will make it so. These pictures show how a group of pines converted an unhappy outlook into a vista of real beauty and they did it so effectively one needs to be told that the views were actually taken from the same place. They will do as much for you if you wish. Your screening problems can be indicated on the back page of this folder.



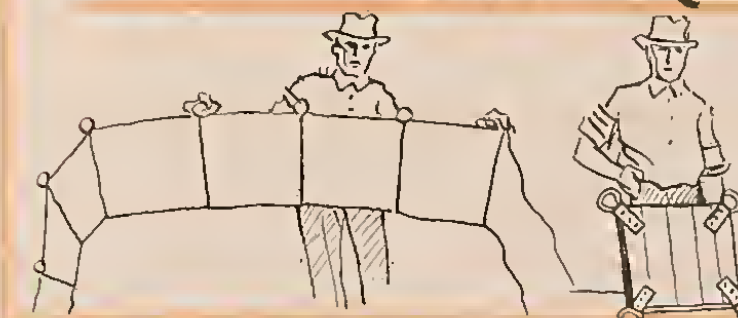
3 reasons why HICKS EVERGREENS succeed



THEY have good roots and good roots is the first consideration in buying Evergreens. The only way to get good roots is to root prune and transplant. This not only increases the number of small roots but keeps them in a smaller radius. Being in a smaller radius, very few are lost in digging. The tree on the right has been root pruned; that on the left has not.



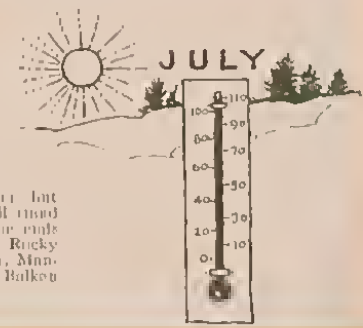
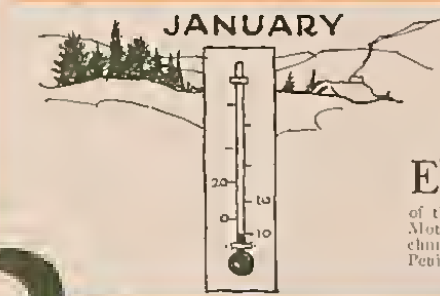
DUG and PACKED RIGHT



The second consideration is carefully dug trees. Evergreens that are dug right and that reach the customer with a ball of soil that is compact and intact the way we seal them, are pretty sure to thrive. The larger-sized trees are packed with a conical shaped canvas lashed and cross lashed about the ball of soil that is held firmly to a wooden platform. This is our own invention. Whether they remain in transit one day, ten days or longer makes little difference. Smaller trees with fibrous roots have the usual burlap secured on.



ADAPTED TO CLIMATE

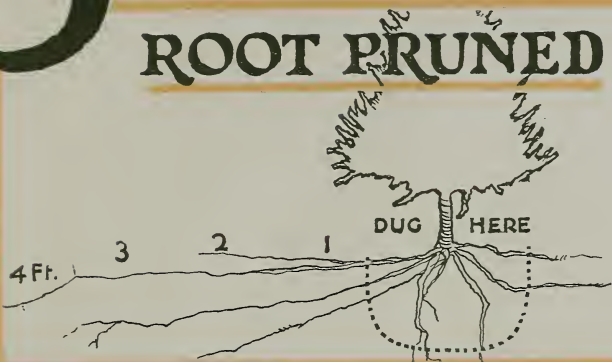


EVERGREENS must stand not only the cold of Winter but the heat of Summer. We offer only species that will stand severe variation in temperature and we have gone to the ends of the earth to get them. They come from New England, Rocky Mountains in Colorado, mountains of Northern Japan, Korea, Manchuria, Southern Siberia, the Caucasus Mountains and the Balkan Peninsula.

3 reasons why HICKS EVERGREENS are guaranteed to grow or replaced FREE

3 reasons why HICKS EVERGREENS succeed

ROOT PRUNED



THEY have good roots and good roots is the first consideration in buying Evergreens. The only way to get good roots is to root prune and transplant. This not only increases the number of small roots but keeps them in a smaller radius. Being in a smaller radius, very few are lost in digging. The tree on the right has been root pruned; that on the left has not.



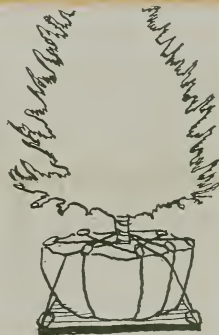
DUG and PACKED RIGHT



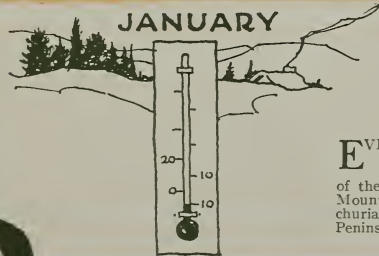
The second consideration is carefully dug trees. Evergreens that are dug right and that reach the customer with a ball of soil that is compact and intact the way we send them, are pretty sure to thrive.

The larger-sized trees are packed with a conical shaped canvas lashed and cross lashed about the ball of soil that is held firmly to a wooden platform. This is our own invention. Whether they remain in transit one day, ten days or longer makes little difference.

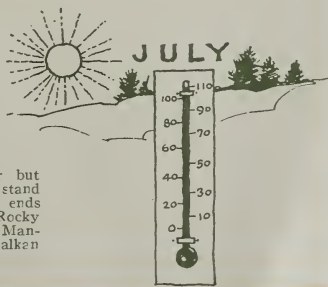
Smaller trees with fibrous roots have the usual burlap sewed on.



ADAPTED TO CLIMATE



EVERGREENS must stand not only the cold of Winter but the heat of Summer. We offer only species that will stand severe variation in temperature and we have gone to the ends of the earth to get them. They come from New England, Rocky Mountains in Colorado, mountains of Northern Japan, Korea, Manchuria, Southern Siberia, the Caucasus Mountains and the Balkan Peninsula.



3 reasons why HICKS EVERGREENS are guaranteed to grow or replaced FREE

HICKS EVERGREENS

FOR THE HOME OF YOUR IDEALS

PLANT NOW

IMMEDIATE, LASTING AND INCREASING BEAUTY

WE REPLACE FREE every tree purchased from us that does not grow satisfactorily

NO SPECULATION IF YOU GET YOUR TREES FROM HICKS

ARBOR VITÆ - Pyramidal Shaped

For hedges and accentuation in foundation plantings.

| Ings. | Each | Per 10 |
|------------|--------|---------|
| 2 ft. high | \$1.00 | \$ 8.00 |
| 3 ft. high | 3.50 | 30.00 |
| 4 ft. high | 5.00 | 40.00 |
| 5 ft. high | 7.00 | 60.00 |

CEDAR, RED

Tall narrow columns. Pre-eminent for formal treatment.

| | | |
|-------------|--------|---------|
| 3 ft. high | \$3.50 | \$30.00 |
| 4 ft. high | 5.00 | 40.00 |
| 5 ft. high | 7.00 | 60.00 |
| 6 ft. high | 9.00 | 80.00 |
| 7 ft. high | 12.00 | 100.00 |
| 8 ft. high | 15.00 | 140.00 |
| 10 ft. high | 20.00 | 180.00 |

We can supply Cedars up to 30 ft.

FIR, NIKKO

A shapely pyramid of dark shining green. Perfectly hardy. Use as specimens in the evergreen garden and for attractive groups.

| | | |
|------------------------|--------|---------|
| 2 ft. high | \$3.50 | \$30.00 |
| 3 ft. high | 6.00 | 50.00 |
| 4 ft. high | 8.00 | 70.00 |
| 5 ft. high | 10.00 | 90.00 |
| 6 ft. high, 3 ft. spr. | 15.00 | 140.00 |
| 7 ft. high, 4 ft. spr. | 20.00 | 190.00 |
| 8 ft. high, 4 ft. spr. | 25.00 | 240.00 |
| 9 ft. high, 5 ft. spr. | 35.00 | 300.00 |

FIR, WHITE - Abies concolor

A handsome evergreen and it does take a connoisseur to recognize its rare beauty. It is in all the better collections. Use as specimens or in groups with other firs and Spruce.

| | | |
|--------------------------|--------|---------|
| 2 ft. high | \$4.00 | \$37.50 |
| 3 ft. high | 6.00 | 50.00 |
| 4 ft. high | 10.00 | 90.00 |
| 5 ft. high | 15.00 | 140.00 |
| 6 ft. high, 3-4 ft. spr. | 20.00 | 190.00 |
| 7 ft. high, 3-4 ft. spr. | 25.00 | 225.00 |
| 8 ft. high, 4-5 ft. spr. | 30.00 | 275.00 |

HEMLOCK, AMERICAN

For hedges and shady locations. The most graceful evergreen.

| | | |
|-------------|--------|---------|
| 1½ ft. high | \$1.25 | \$10.00 |
| 2 ft. high | 2.50 | 20.00 |
| 3 ft. high | 4.00 | 35.00 |
| 4 ft. high | 6.00 | 55.00 |

JUNIPER - Prostrate Form

For foundation and other plantings that should be low

| | | |
|-------------|--------|---------|
| 1½ ft. wide | \$2.50 | \$22.50 |
|-------------|--------|---------|

LAUREL, MOUNTAIN

See this illustrated in "Attractive Foundations" picture. Good also for woodland and in evergreen groups. For soil requirements see Rhododendron.

| | | |
|------------|--------|---------|
| 2 ft. high | \$2.50 | \$20.00 |
|------------|--------|---------|

LEUCOTHOE CATESBÆI

A very choice, low-growing evergreen shrub. The branches arch gracefully. The waxy foliage turns purple in Winter. Flowers like Lily-of-the-Valley.

| | | |
|----------|--------|---------|
| 1-1½ ft. | \$2.00 | \$17.50 |
|----------|--------|---------|

PINE, JACK

We think you will like this for its tortuous character. Most everybody does. Very pleasing in screen plantings and Pine groups.

| | Each | Per 10 |
|------------|--------|---------|
| 3 ft. high | \$2.50 | \$20.00 |
| 4 ft. high | 5.00 | 45.00 |
| 5 ft. high | 7.00 | 60.00 |
| 6 ft. high | 10.00 | 90.00 |
| 7 ft. high | 12.50 | 120.00 |
| 8 ft. high | 15.00 | 140.00 |

PINE - Mugho

Low cushions of dark green. They look well in formal plantings and their low, horizontal lines are pleasing in connection with the taller species.

| | | |
|-------------|--------|---------|
| 1½ ft. wide | \$3.50 | \$30.00 |
| 2 ft. wide | 5.00 | 45.00 |

PINE - Red

A long needed pine of soft plume-like texture. Thrives in dry soil. A fast grower. This is an opportunity to get a rare species that one does not often have and you make a mistake not to clothe a hillside with them, or at least let them have a liberal representation in your pine groups.

| | | |
|------------|--------|---------|
| 2 ft. high | \$1.25 | \$10.00 |
| 3 ft. high | 3.50 | 30.00 |
| 4 ft. high | 6.00 | 50.00 |
| 5 ft. high | 8.00 | 70.00 |
| 6 ft. high | 12.00 | 100.00 |
| 7 ft. high | 15.00 | 140.00 |

PINE, SCOTCH

A stalwart, fast-growing Pine. Pleasing blue-green. Succeeds under trying conditions, as severe wind and poor soil

| | | |
|--------------------------|--------|---------|
| 2 ft. high | \$1.50 | \$12.50 |
| 3 ft. high | 3.00 | 25.00 |
| 4 ft. high | 5.00 | 45.00 |
| 5 ft. high, 3 ft. spr. | 8.00 | 70.00 |
| 6 ft. high, 3-4 ft. spr. | 10.00 | 90.00 |

PINE, WHITE

One of the most serviceable of the genus. A beautiful, fleecy-foliated pine, good for 200 years. Vigorous in youth. Picturesque in old age.

| | | |
|---------------------------------|---------|---------|
| 2 ft. | \$ 1.25 | \$10.00 |
| 3 ft. | 2.50 | 20.00 |
| 4 ft., 2-3 ft. spr. | 3.50 | 30.00 |
| 5 ft., 2-4 ft. spr. | 5.50 | 50.00 |
| 6 ft., 3-4 ft. spr., 7 yrs. | 8.00 | 70.00 |
| 7 ft., 4-6 ft. spr., 8 yrs. | 12.00 | 110.00 |
| 8 ft., 4-6 ft. spr., 9 yrs. | 18.00 | 170.00 |
| 9 ft., 7 ft. spr., 10 yrs. | 20.00 | 190.00 |
| 10 ft., 6-7 ft. spr., 11 yrs. | 30.00 | 275.00 |
| 12 ft., 8-10 ft. spr., 13 yrs. | 40.00 | 375.00 |
| 14 ft., 8-10 ft. spr., 15 yrs. | 60.00 | 550.00 |
| 16 ft., 10-12 ft. spr., 17 yrs. | 80.00 | 750.00 |

PINES - SPECIAL OFFER

We have several thousand Pines growing on leased land that must be cleared by Spring, 1920. The varieties are Austrian, Japanese Black, Pich, Japanese Red, Scotch White, and Jack. Prices for trees, our selection: 3 ft. \$2.00 each, \$17.50 for 10; 4 ft. \$3.00 each, \$27.50 for 10; 5 ft. \$4.00 each, \$37.50 for 10; 6 ft. \$6.00 each, \$55.00 for 10; 7 ft. \$8.00 each, \$75.00 for 10. All are guaranteed.

RETINISPORA - In var.

These are compact little trees mostly cone-shaped. Frequently seen but seldom in good taste. They are green, golden and blue. State color desired.

| | Each | Per 10 |
|--------|--------|---------|
| 1½ ft. | \$2.50 | \$20.00 |
| 2 ft. | 3.50 | 30.00 |

RHODODENDRONS

Pink, White, Red, Lilac. To succeed, the soil must be about half decaying leaves. Add 8 in. more every Fall. Avoid lime. Plant 2½ ft. apart.

| | | |
|-------------|--------|---------|
| 1½ ft. high | \$3.50 | \$30.00 |
| 2 ft. high | 5.00 | 45.00 |

SPRUCE - Douglas

Not quite as graceful as Hemlock, but a very beautiful pleasing texture. If we were to name five of the best all round evergreens we would be tempted to place this first.

| | | |
|---------------------------|---------|---------|
| 3 ft. high | \$ 3.00 | \$25.00 |
| 4 ft. high, 3 ft. spr. | 5.00 | 45.00 |
| 5 ft. high, 3 ft. spr. | 7.00 | 65.00 |
| 6 ft. high, 4 ft. spr. | 10.00 | 90.00 |
| 10 ft. high, 4-6 ft. spr. | 40.00 | 350.00 |
| 12 ft. high, 6-8 ft. spr. | 50.00 | 450.00 |

SPRUCE - Koster's Col. Blue

Intense blue. Used in proper proportion with green trees they are agreeably showy. We hesitate to say just what the proportion should be. We imagine one in twenty-five would be the maximum.

| | | |
|---------------------------|--------|---------|
| 3 ft. high | \$5.00 | \$45.00 |
| 4 ft. high, 2½-4 ft. spr. | 8.00 | 70.00 |
| 5 ft. high, 3-4 ft. spr. | 10.00 | 90.00 |
| 6 ft. high, 3-4 ft. spr. | 15.00 | 140.00 |
| 7 ft. high, 4-5 ft. spr. | 20.00 | 190.00 |
| 8 ft. high, 4-5 ft. spr. | 30.00 | 290.00 |
| 10 ft. high, 4-5 ft. spr. | 40.00 | 375.00 |

SPRUCE - Oriental

Dark handsome green. A delightful tree to have in your groups or as specimens. Plant 15 ft. apart at least.

| | | |
|-------------------------|--------|---------|
| 2 ft. high | \$3.00 | \$25.00 |
| 3 ft. high, 2½ ft. spr. | 5.00 | 45.00 |
| 4 ft. high, 3 ft. spr. | 8.00 | 70.00 |

YEW, Japanese

Gems, real gems. For small evergreen plantings, hedges and exquisite garden specimens. Try them and let them speak for themselves.

| | | |
|-------------|--------|---------|
| 1 ft. high | \$1.50 | \$12.50 |
| 1½ ft. high | 3.00 | 25.00 |
| 2 ft. high | 5.00 | 40.00 |
| 3 ft. high | 8.00 | 70.00 |

YEW, - Japanese, Flat Form

The same beautiful foliage as the preceding but low and spreading. Plant 3 ft. apart for a solid covering.

| | | |
|--------------------------|--------|---------|
| 1 ft. high, 1 ft. wide | \$2.00 | \$15.00 |
| 1½ ft. high, 1½ ft. wide | 3.50 | 30.00 |
| 2 ft. high, 2 ft. wide | 6.00 | 50.00 |
| 2½ ft. high, 2½ ft. wide | 9.00 | 80.00 |
| 3 ft. high, 3 ft. wide | 12.00 | 100.00 |

LIVE CHRISTMAS TREES

You are going to let the children have a real live tree this year. One that can be planted out after the holidays and grow in beauty year after year. Look over your grounds and reserve the choicest spot for the Christmas tree. Be sure there is plenty of room for you will want to add a new tree to the "Christmas Group" each year.

Douglas Spruce and Nikko Fir are ideal trees for Christmas. Tell us what size you want and we will reserve a handsome specimen for you and ship to arrive in time for the festive occasion.

P13

EVERGREEN HEDGES

It's just as easy to have a hedge that is attractive twelve months of the year as one that is attractive three months. Use Evergreens.

*Frame your vistas with
EVERGREENS*



Yews as shown in illustration make a handsome hedge and can be kept down to 3 feet. Plant 2 feet apart. Arbor Vitæ is often used where a narrow hedge 4 to 10 feet high meets the requirement. Hemlocks are recommended where a hedge 6 to 10 feet high is desired. Plant 3 feet apart. Douglas Spruce is quick, dense and effective. Plant 3 feet apart. White and Scotch Pine are adapted for bulky hedges 12 feet high or larger. Plant 4 to 6 feet apart. Pines and Spruce should be sheared the last of June. Cut the new growth back to 4 inches. This will increase the density of the hedge. Yew, Hemlock and Arbor Vitæ can be sheared any time during the Summer.



There is joy in a garden because you can walk in it and you can take your friends there for a stroll. Everything in a garden is serene, blithe, harmonious, restful—a glorious amalgamation of sunshine, rain and dew. An Evergreen garden is delightful Winter and Summer. Glad to help you plan one. Indicate on the cross section paper attached the area you can devote and its relation to the house and we will tell you how to make it a source of continuous joy.

EVERGREEN GARDENS

All the delight, satisfaction, relaxation and pride you desire from a garden can be and ought to be continuous. Make it so with Evergreens.

You will find it easy with this sheet to indicate your wishes. The roughest sort of sketch is graphic to us. Tell us if you want a layout for the foundation, a screen to the street, an enclosure for the garden or a hedge, and jot down the dimensions, and we will promptly tell you what to plant, and how to arrange it. A photograph will also help.

Each square represents feet.

