

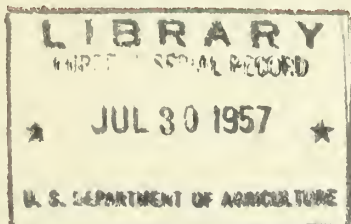
## Historic, archived document

Do not assume content reflects current scientific knowledge, policies, or practices.



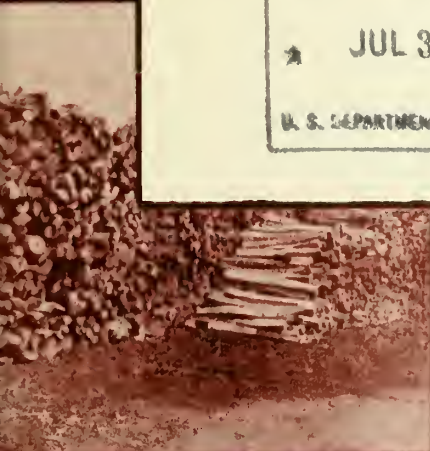
4622  
37168  
p. 2

# Markets for Ohio Timber



Orris D. McCauley

Kenneth L. Quigley



U. S. DEPARTMENT OF AGRICULTURE      FOREST SERVICE  
Central States Forest Experiment Station  
Miscellaneous Release 14      June 1957

This report is from the  
Division of Forest Economics  
CENTRAL STATES FOREST EXPERIMENT STATION

This report presents the results of a Statewide survey of forest-products buyers in Ohio. It was conducted under Title II of the Research and Marketing Act of 1946 during the summer of 1956. The authors wish to thank the many timber-products buyers who contributed this market information and the Service Foresters of the Ohio Division of Forestry who collected the information.

Central States Forest Experiment Station, U. S. Dept. of Agriculture  
Forest Service, 111 Old Federal Building, Columbus 15, Ohio  
W. G. McGinnies, Director

# MARKETS FOR OHIO TIMBER

ORRIS D. McCAULEY, research forester

KENNETH L. QUIGLEY, forest economist

Approximately 20 percent of the total land area in Ohio is forested. This forest land produces some of the finest hardwoods grown. More than 700 buyers in Ohio are actively in the market for the rough products that come from this timber. These products, along with those used by allied secondary wood-using industries, make up an important part of Ohio's total manufacturing output.

Although there are plenty of buyers for the timber produced in the State, many farmers and other woodland owners are often hampered in selling their logs, bolts, and other products because they are not acquainted with all the markets in their area. This up-to-date directory of buyers of standing timber and rough timber products is intended to help alleviate this situation. Moreover, secondary wood-using industries can also use this list to locate producers and thereby help solve their procurement problems. And finally, the directory may serve as a guide to anyone interested in establishing new industries.

The buyers listed include only those who were actively buying stumpage and rough timber products (logs, bolts, poles, slabs, posts, and cordwood) in 1956. Prices are for the same period. Although an attempt was made to list all buyers of these products, undoubtedly there are omissions. Those who wish to correct listings or add additional names to the list should contact their nearest Service or Farm Forester or write to the Central States Forest Experiment Station, Columbus 15, Ohio. No attempt was made to ascertain the quality of the work or integrity of the buyers listed. This responsibility must be assumed by the woodland owner entering into a business agreement with the buyer.

Woodland owners who need help in marketing their stumpage or logs can contact one of the Ohio Service Foresters (fig. 1). No charge is made for this service. Primary and secondary wood-products buyers can also contact Service Foresters for help in locating timber products.





Central Office

X

Address

1500 Dublin Road, Columbus

District Offices

- |    | <u>Address</u>                                       |
|----|--|
| 1  | 524 East Second Street, Defiance                     |
| 2  | 952 Lima Avenue, Findlay                             |
| 3  | 219 West Main Street, Ashland                        |
| 4  | 1938 South Union Street, Alliance                    |
| 5  | Box 241, Burton                                      |
| 6  | 124 Second Street, N. W.,<br>New Philadelphia        |
| 7  | 5th Floor, Central National<br>Bank Bldg., Cambridge |
| 8  | 360 East State Street, Athens                        |
| 9  | 345 Allen Avenue, Chillicothe                        |
| 10 | 3rd Floor, Court House, Portsmouth                   |
| 11 | 15 South Broadway, Lebanon                           |
| 12 | 407 North Wayne Street, Piqua                        |
| 13 | 75 1/2 North Sandusky Street,<br>Delaware            |
| 14 | c/o Farm Forester, Urbana                            |

Figure 1.--Offices of Ohio Service Foresters.

## MARKET SPECIFICATIONS AND PRICES

Although markets for rough forest products occur throughout the State, normally only sawlog, handle, and face-veneer stumpage and logs are marketable everywhere in the State (figs. 2 and 3).



The bulkiness and low unit value of most forest products limit the distance they can be transported before processing. Therefore, individuals selling rough timber products usually are more or less restricted to markets in their local area. As a result forest products having similar qualities may have different degrees of demand and varying prices in different parts of the State. Timber prices reflect local conditions to

Figure 2.--Sawtimber buyers in Ohio. Each dot represents one buyer.

a greater extent than do prices for most other commodities.

The prices paid for rough forest products marketed in Ohio normally range from \$8.00 per thousand board-feet for stumpage to \$300.00 per thousand board-feet for the better face-veneer logs (table 1). Although eastern Ohio has more commercial forest land, past forest management and fires have lowered the quality of timber. Hence, the quality of the timber marketed in western Ohio is superior to that marketed in eastern Ohio. For the most part, prices paid for rough timber products are slightly higher in western Ohio than in the eastern portion of the State (fig. 4). Specifications are as variable as prices but generally depend on size, quality, and species. Very few buyers publish specifications, but the general quality specifications which many buyers use are given under the discussion of each particular market.

Table 1.--Prices paid for rough forest products in Ohio

Product	Unit of measure	Price range per unit <sup>1/</sup>	Weighted average price		
			Eastern	Western	Statewide
		Dollars	Dollars	Dollars	Dollars
<b>SAWTIMBER</b>					
Stumpage					
Good quality	M bd.-ft. <sup>2/</sup>	12.00-51.00	29.00	44.00	36.00
Poor quality	"	8.00-23.00	11.00	18.00	14.00
Sawlogs (delivered)					
Good grade	"	45.00-90.00	60.00	70.00	65.00
Medium grade	"	20.00-70.00	45.00	45.00	45.00
Low grade	"	20.00-40.00	35.00	30.00	35.00
<b>FACE AND COMMERCIAL</b>					
<b>VENEER LOGS (delivered)</b>					
White oak	M bd.-ft.	85.00-280.00	175.00	145.00	160.00
Black walnut	"	90.00-300.00	190.00	190.00	190.00
Other species	"	40.00-300.00	190.00	110.00	160.00
<b>COOPERAGE</b>					
Stumpage	M bd.-ft.	40.00-65.00	--	--	50.00
Logs (delivered)	"	75.00-145.00	--	--	105.00
Stave bolts					
Grade No. 1	Chord ft.	1.00-2.20	--	--	1.40
Grade No. 2	"	.50-1.00	--	--	.80
Heading	"	.50	--	--	.50
<b>CONTAINER VENEER</b>					
Stumpage	M bd.-ft.	25.00-35.00	--	--	30.00
Logs (delivered)	"	60.00-80.00	--	--	75.00
<b>PULPWOOD</b>					
Rough	St. cord <sup>3/</sup>	12.50-13.25	--	--	12.90
"	Long cord <sup>4/</sup>	14.00-16.50	--	--	15.00
Peeled	"	16.00-19.50	--	--	18.50
<b>FENCE POSTS (untreated)</b>					
Line	Each	.50-.85	--	--	.60
Corner	Top dia. (in.)	.33-.45	--	--	.36
<b>HANDLE LOGS</b>					
Stumpage	M bd.-ft.	30.00-55.00	--	--	45.00
Logs (delivered)	"	65.00-85.00	--	--	75.00

<sup>1/</sup> Extreme high and low prices omitted.

<sup>2/</sup> Doyle scale.

<sup>3/</sup> 4 x 4 x 8 feet.

<sup>4/</sup> 4 x 5 x 8 feet.



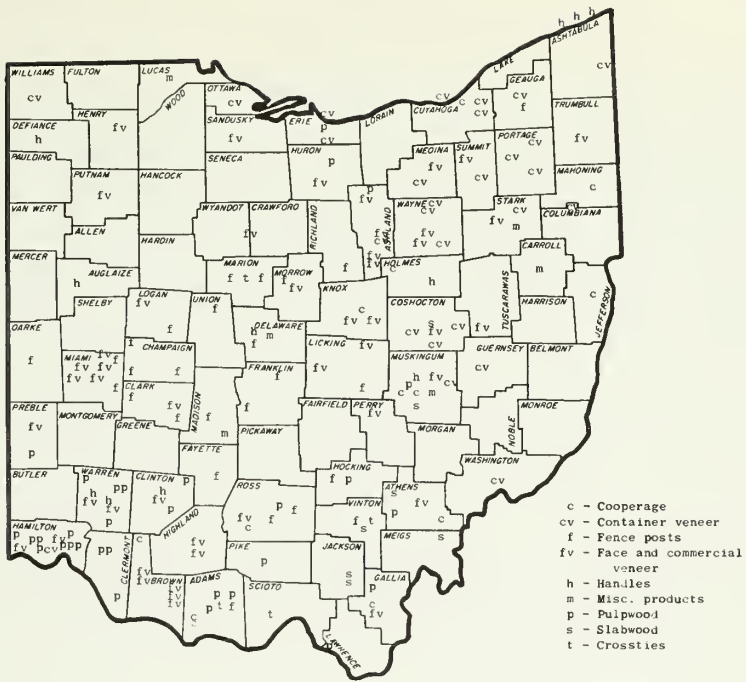


Figure 3.--Markets for timber other than sawtimber.



Figure 4.--Geographic study areas of Ohio.

## Sawtimber Markets

Sawmills that provide ready markets for sawtimber-size trees are located in almost every county; 544 buyers were reported to be actively in the market for sawtimber in 1956. Of this number, 50 were buying more than a million board-feet annually. Often sawmill operators buy all sawlog-size trees on a tract. Occasionally they resell the better logs to veneer, handle-timber or cooperage buyers and then saw the remaining good-quality logs into lumber and sell it by standard factory-lumber grades (fig. 5). However, in many cases, all logs regardless of quality are sawed for a single market, whether it is crating, graded lumber, or other products. Low-grade logs normally are used for boxing and crating, car-blocking, or farm building construction and maintenance.

Stumpage sales are commonly made by lump-sum, sawmill tally, or Doyle log scale. In the lump-sum or boundary sale method, a lump-sum amount is paid for all merchantable timber on a tract or within specified boundaries. If the trees are to be sawed into factory lumber or other products of similar quality, trees smaller than 12 inches in diameter at stump height are normally not accepted. Eight feet is the minimum merchantable length. Trees must also be free of excessive center rot, knots, and other defects. For low-quality use, such as car-blocking and farm lumber, 10 inches diameter at stump height and 5 feet in length are common minimum acceptable specifications.

Stumpage prices vary with size, quality, and location. The price paid for top-quality stumpage is often \$35.00 to \$40.00 per thousand board-feet. For low-quality and small-diameter timber from which little or no top-grade lumber can be sawn, stumpage prices may be as low as \$5.00 per thousand board-feet.



Figure 5.--This lumber has been graded, sorted, and stacked.

Specifications and prices paid for sawlogs vary widely. Most log buyers do not follow any established grading system, instead they use their own system or do not grade at all. For this reason it is futile to apply average log prices to any particular grade of log. However, most buyers do agree on several requirements for the various log grades. On this basis, logs were separated into three common grades for this directory and price ranges and averages were determined for them. The more common specifications for these grades are given below.

Good Grade--Logs that have three faces clear and are perfectly sound, straight, and fresh cut. Logs must be 14 inches and larger in diameter at the small end and 8 feet or longer in length (fig. 6).

Medium Grade--All logs not meeting the "good" grade specifications but that have two clear faces and are fresh cut and free of splits, checks, and rot. Logs must be 10 inches or larger in diameter at the small end and 8 feet or longer in length. Crook or sweep must not be excessive.

Low Grade--All merchantable logs not meeting specifications for the other grades but having at least one clear face. This includes logs as small as 6 inches in diameter at the small end and 6 feet or more in length. Some rot is allowed. Logs must produce some No. 2 and 3 common lumber.

Normally, in such species as walnut, cherry, and ash, lower diameter limits are permitted in any particular grade.

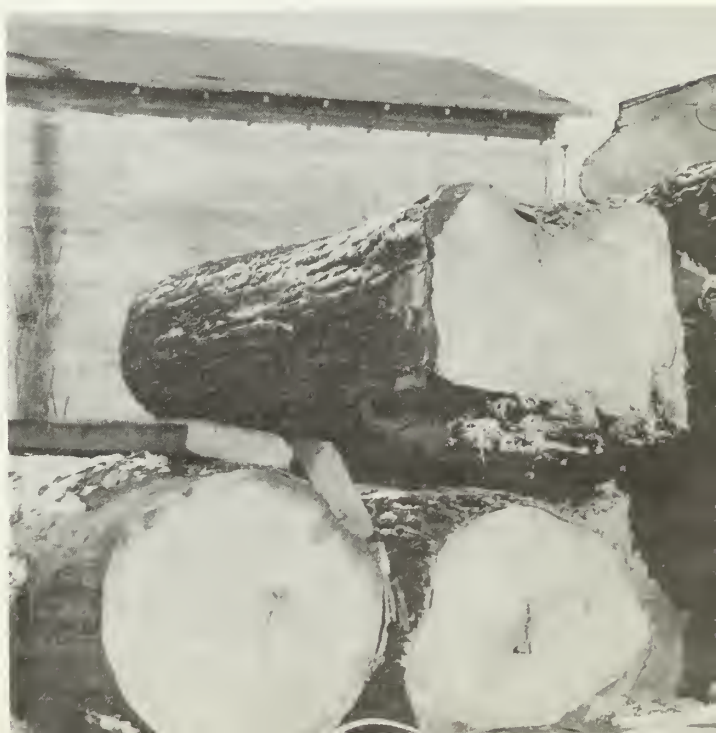


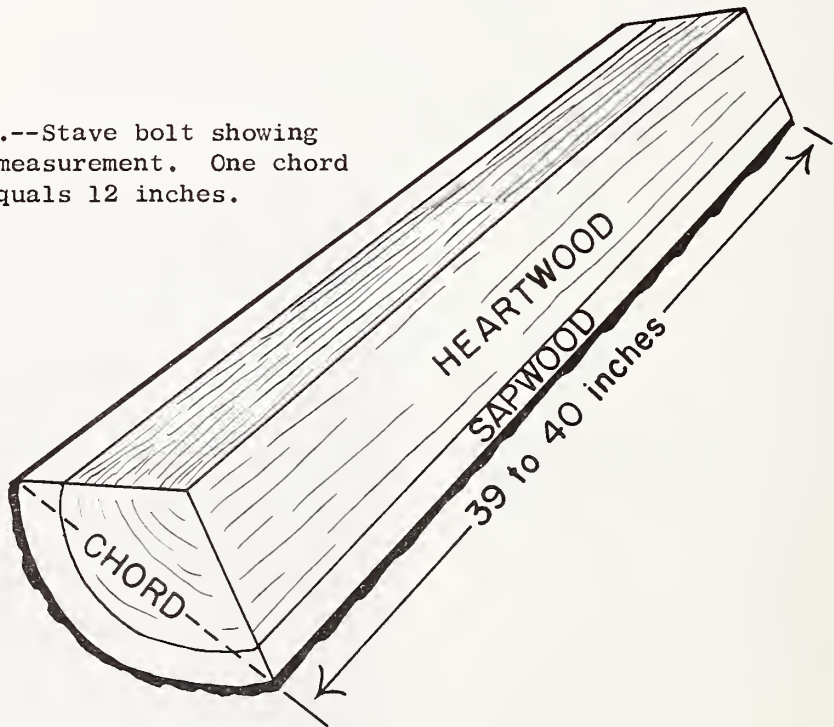
Figure 6.--Good grade sawlogs.

## Cooperage-Timber Markets

There are 11 buyers located in eastern and southern Ohio that buy stumpage and stave bolts for tight cooperage mills. Most of the mills are portable and operate throughout the year. White oak is the principal species used but some bur oak and swamp white oak are accepted. Specifications for cooperage timber are rigid. Logs or bolts must be straight-grained and free of bird pecks, knots, checks, and cracks. Trees must be 12 inches or larger in diameter. Bolts cut for cooperage staves must have a minimum length of 39 to 40 inches. Split bolts that measure at least 14 inches across the chord, bark to bark, are preferred (fig. 7). Bolts cut for heading must be 23 to 24 inches long and be of the same quality as stave bolts.

Prices paid for cooperage stumpage average around \$50.00 per thousand board-feet, Doyle scale, and for delivered logs approximately \$105.00 per thousand board-feet. Some buyers accept cooperage in nominal cord units or 4 feet x 3 1/2 feet x 8 feet and pay \$40.00 to \$80.00 per cord. Prices for cooperage purchased in bolt form range from \$0.50 to \$2.20 per chord foot depending on quality. Heading bolts sell for about \$0.50 per chord foot.

Figure 7.--Stave bolt showing chord measurement. One chord foot equals 12 inches.





## Handle-Timber Markets

There are 10 handle-timber buyers operating throughout the State of Ohio, and good-quality handle timber can be marketed in most counties. These buyers represent both in-state and out-of-state plants. A little hickory is used for handle stock but ash is the preferred species. Good-quality handle timber must be straight-grained, free of knots and other surface defects, and free of abrupt crooks or bends. No wormy or dead logs are accepted, but some buyers will accept logs with as much as 8 inches of center rot. Handle-timber buyers prefer logs or bolts 8 inches and larger in diameter on the small end. Most buyers will not accept bolts shorter than 4 1/2 feet; some require logs at least 3 feet long. Handle-timber stumpage prices vary from \$30.00 to \$55.00 per thousand board-feet, depending on quality and location. Prices for handle-timber logs range from \$65.00 to \$85.00 per thousand board-feet.

## Post Markets

Markets for hardwood posts are located throughout the State. A few buyers also buy pine posts which they treat to increase durability. Twenty-five post buyers are reported to be active, although most of them do not buy more than 500 posts each annually. Of the active buyers, eight are purchasing 1,000 or more posts and two buyers purchased more than 40,000 posts each in 1955.

Posts are sold in Ohio for farm fence construction, highway guard posts, and rustic fencing. Most posts are produced by farm woodland owners and are sold locally. However, other producers sell posts by the truckload to grain elevators and lumber yards throughout the State (fig. 8). Black locust, redcedar, catalpa, sassafras, chestnut oak, and Osage-orange are the principal hardwood species used for posts. Locust exceeds all other species in number produced and marketed.

Good-quality posts are straight, sound, and free of such defects as rot, protruding knots, and excessive sapwood. Line posts must be 6 1/2 or 7 feet long, corner or anchor posts must be 9 feet. Diameter limits for line posts range from 3 1/2 to 6 inches. Corner posts must range from 6 to 14 inches in diameter. They are normally purchased by the inch of top diameter, although some are purchased by the piece.

The price for untreated line posts averages \$0.60 per post but ranges from \$0.50 to \$0.85. Corner post prices range from \$0.33 to \$0.45 per inch of top diameter, with a Statewide average of \$0.36. Treated post prices range from \$0.65 to \$5.20 per post depending on size and quality.





Figure 8.--Black locust fence posts for sale at a lumber and farm equipment yard in southern Ohio.

### Pulpwood Markets

There are 25 buyers currently in the market for Ohio pulpwood but this number is increasing steadily. The pulpwood market is confined to counties near pulp mills or counties having good rail connections to a pulp mill. Five pulp mills are buying pulpwood produced in Ohio. Three of these mills are located in the State and two are outside the State. In 1955, these mills purchased approximately 82,000 standard cords of pulpwood in Ohio.

Pulpwood must be sound, green, and usually must be separated into softwood (conifers), soft-hardwood, and hard-hardwood. The smallest diameter bolt acceptable for woodpulp is 4 inches on the small end. Anything larger than 15 inches must be split (fig. 9). Some buyers are not accepting bolts larger than 9 inches diameter on the large end. Pulpwood is bought by the standard cord (4 feet x 4 feet x 8 feet) or the long cord (or unit) (4 feet x 5 feet x 8 feet).

The price paid for pulpwood varies with the distance from the market, methods used in shipping, condition of the wood (peeled or rough), and the size of the cord. For the standard cord (rough), the average price is \$12.50 to \$13.25 per cord. For the long cord, prices average between \$16.00 and \$19.50 for peeled wood and \$14.00 and \$16.50 for wood with bark.

Figure 9.--Soft-  
hardwood pulp bolts,  
peeled and split.



#### Face and Commercial Veneer Markets

Top-quality veneer logs (used for faces on furniture, wall paneling, and so on) bring the highest prices paid for forest products in Ohio. Markets for face veneer timber are Statewide. The directory lists 49 active face and commercial veneer timber buyers. Not listed, but active, are several traveling buyer-representatives of out-of-state veneer companies.

Specifications for face veneer timber are very rigid. Logs must be nearly free of defects for the top-quality grade. Some knots and center rot are allowed. Only the best walnut, white oak, red oak, cherry, sugar maple, white ash, and sycamore can be used for face veneer. Walnut, cherry, and white ash logs as small as 10 inches in diameter are acceptable. For other species, larger diameter limits are required. The following tabulation illustrates commonly acceptable size specifications for face veneer logs.

<u>Species</u>	<u>Diameter</u> (inches)	<u>Length</u> (feet)
White oak	21	6-16
Sugar maple	16	8-16
Red oak	19	8-16
Ash, cherry, walnut	14	6-16

Face veneer stumpage is usually purchased with other timber products in a lump-sum sale and not as a separate product. Prices paid for stumpage are as low as \$35.00 in some cases and as high as \$500.00 in others. Normally, prices paid for white oak veneer logs range from \$85.00 to \$280.00 per thousand board-feet; for walnut, \$90.00 to \$300.00; and for other species \$40.00 to \$300.00. Some buyers purchase only white oak and walnut. Yellow-poplar is purchased for commercial veneer. Commercial veneer is that type of veneer used for plywood core, backs, and crossboards. Prices and specifications are about the same as those for face veneer.

### Container Veneer Markets

The markets for container veneer stumpage and logs are centered in the fruit and vegetable producing areas of the State. Twenty-nine buyers are known to be in the market for container veneer timber and there are 15 mills in Ohio which produce container veneer. Of this number, seven purchased 500,000 board-feet or more of veneer timber in 1955.

Very few container veneer timber buyers purchase stumpage. Most prefer to take delivery at the plant site. Logs used for container veneer must be green and free of most defects. If logs have a few defects such as small knots, rot, and checks, they may be accepted but the log scale is reduced. Species preferred for container veneer are beech, sugar maple, hickory, American elm, blackgum, cucumber, basswood, soft maple, and yellow-poplar. Logs smaller than 12 inches or larger than 40 inches in diameter cannot be used. Although most buyers do not specify a minimum length, they usually will not accept any bolt shorter than 46 inches.

The average price for container veneer stumpage ranges from \$25.00 to \$35.00 per thousand board-feet. Logs delivered at the mill will bring from \$60.00 to \$80.00 per thousand board-feet.

### Miscellaneous Markets

In addition to the products more commonly marketed in Ohio, there are several others of importance in some parts of the State. These include mine props, sucker-rod timber, artificial limb bolts, shuttle bolts, puddling poles, charcoal wood, wood chips, boat oar stock, and firewood.

As more wood-using industries increase efficiency, slabs remaining from lumber production are being more widely used. Charcoal, chipped wood for metallurgical use, and firewood are the principal uses of slabs at the present time. In addition, some slabwood

is used in paper pulp production. Specifications regarding size, species, and condition of slabwood vary with the intended use. Slabwood for charcoal and wood chips sells for \$1.50 to \$2.00 per standard cord at some sawmills, and at others it is given away.

White ash for sucker-rod timber (used for suction rods in water wells) is in demand in some parts of Ohio. The prices paid and the specifications are about the same as those for white ash handle timber.

Shuttles are boat-shaped pieces of wood used in the textile industry. One eastern Ohio concern is manufacturing shuttles from dogwood. Shuttle timber is purchased by the standard cord but it may be cut in 20-, 40-, or 60-inch lengths with a minimum diameter of 5 inches. Dark-colored wood cannot be used. The finished shuttles must be free of defects but some knots and rot are allowed in the bolts. In January 1957, the operator was paying approximately \$12.00 per cord for stumpage and \$40.00 per cord for bolts delivered at the mill.

Prices and specifications for practically all rough forest products are highly variable. Woodland owners need to contact the buyer prior to cutting and sale in order to learn current prices and specifications.



## DIRECTORY OF BUYERS

The names of timber buyers are listed alphabetically by county according to the product they buy. Buyers listed include only those who are actively in the market for rough timber products. The listing of a buyer's name in the directory indicates that his annual purchases are at least as much as the minimum volume shown in the second column of the tabulation below. In addition, those buyers who purchase larger amounts of timber, at least as much as the third column in the tabulation below, are identified by an asterisk (\*) beside their names.

<u>Product purchased</u>	<u>Minimum volumes handled</u>	
	<u>Most buyers</u>	<u>Larger buyers</u>
Sawtimber	100,000 Bd.-ft.	1,000,000 Bd.-ft.
Cooperage	50,000 Bd.-ft.	500,000 Bd.-ft.
Handle timber	50,000 Bd.-ft.	500,000 Bd.-ft.
Face & commercial veneer	50,000 Bd.-ft.	500,000 Bd.-ft.
Container veneer	50,000 Bd.-ft.	500,000 Bd.-ft.
Pulpwood	100 Cords	1,000 Cords
Post timber	2,000 Posts	5,000 Posts
Miscellaneous	50,000 Bd.-ft. or 50 Cords	500,000 Bd.-ft. or 500 Cords



ADAMS COUNTY

Sawtimber Buyers

Drenan Compton  
Lynx

Harold Conrad  
Lynx

Asa Copeland  
Rt. #1, Peebles

George Green  
Rt. #3, Peebles

Steve Green  
Peebles

Lloyd Hayslip  
Rt. #1, Blue Creek

\* Floyd E. McCoy  
Peebles

John McFarland  
Rt. #3, Peebles

Archie Moore  
Stout

Arnold Moore  
Star Route, Stout

Wilbur P. Newman  
Rt. #2, Otway

Harlan R. Owens  
West Union

Charles Rhodes  
Rt. #4, Peebles

Simpson & Company  
West Union

Jess Wamsley  
Rt. #2, Manchester

W. B. Ward  
Rt. #4, Peebles

Harley Young  
Rt. #2, West Union

Cross Tie Buyers

Steve Green  
Peebles

Post Timber Buyers

\* Mark Ryan  
Peebles

Pulpwood Buyers

\* Neill & Breslau  
Peebles

G. Paul Lewis  
Rt. #3, Peebles

Earl McCoy  
Rt. #3, Peebles

Cooperage Timber Buyers

\* Simpson & Company  
West Union

Earhart Planing Mill  
West Union

ALLEN COUNTY

Sawtimber Buyers

D. R. Cummings & Company  
1010 S. Central Ave., Lima

Lewis Rempfer  
Rt. #1, Elida

Chester Rex  
1119 Bowman Ave., Lima

L. A. Wannemacher  
Rt. #3, Delphos

---

ASHLAND COUNTY

Sawtimber Buyers

O. J. Boreman  
Jeromesville

E. R. Braden  
Nankin

\* Hess & Gault Lumber Company  
Rt. #2, Ashland

Walter Weidman  
906 Pearl Drive, Loudenville

Face and Commercial  
Veneer Timber Buyers

O. J. Boreman  
Jeromesville

John W. Bowman  
Rt. #2, Loudonville

Harold W. Jarvis  
Rt. #1, Ashland

Walter Weidman  
906 Pearl Drive, Loudenville

Container Veneer Timber Buyers

O. J. Boreman  
Jeromesville

Pulpwood Buyers

John Pamer  
Rt. #1, Polk

ASHTABULA COUNTY

Sawtimber Buyers

Kenneth Artman RFD, Andover	Frank Slusher Rt. #1, Windsor
* Perry & Clifford Artman Rt. #2, Rome	* Slusher Brothers Lumber Co. Windsor, (Wilmer Slusher)
Ross Boggs Rt. #2, Jefferson	James S. Spencer Lumber Co. Rt. #1, Dorset
Clayton Brown Rt. #2, Andover	* W. L. Spencer Dorset
Francis Beckwith Orwell	Spencer Brothers Lumber Co. Dorset
* John W. Corkrean Rt. #2, Jefferson	Thompson Hardwood Lumber Co. Dorset
Harold Durfee Rt. #1, Pierpont	* Waid Brothers Rt. #2, Jefferson
Homer Fink Pierpont	* G. L. Van Devender Rt. #2, Jefferson
Dawson Kinch New Lyme	<u>Container Veneer Timber Buyers</u>
Frank Lower Rt. #1, Kingsville	Andover Basket Mfg. Company Andover
LaVerne Morrison Rt. #1, Kingsville	<u>Handle Timber Buyers</u>
* R. C. B. Newcomb Rt. #3, Jefferson	* True-Temper Corporation Ashtabula
Alfred Slusher Rt. #2, Andover	* True-Temper Corporation Geneva

ATHENS COUNTY

Sawtimber Buyers

\* Harley Allen  
Rt. #2, Nelsonville

Bob Barnhardt & Irwin Wolfe  
Rt. #3, Coolville

Elmer Bobo  
Rt. #5, Athens

Erle Bridgewater  
High St., Chauncey

R. E. Bursen  
Rt. #5, Athens

Carl Cartwright  
Rt. #3, Glouster

William Gillian  
Coolville

Richard & Sammy Grim  
61 Lorene Ave., Athens

Dale & Rollin Hawk  
Rt. #4, Athens

John Mingus  
Hollister

Sickel Brothers  
Mineral

Swart Brothers  
Rt. #2  
New Marshfield

Cooperage Timber Buyers

\* Davis Brothers  
Coolville

Pulpwood Buyers

\* Sickel Brothers  
Mineral

Slabwood Buyers

\* Ohio Valley Charcoal Co.  
Rt. #2, Nelsonville

Face and Commercial  
Veneer Timber Buyers

S. E. Moore  
Rt. #2, Guysville

J. H. Douglas  
505 Richland Ave.  
Athens

---

AUGLAIZE COUNTY

Sawtimber Buyers

F. E. Burden & Sons  
Box 344  
Wapakoneta

John Heitkamp  
(Heitkamp Bros.)  
Rt. #1, Minster

Hoge Lumber Company  
New Knoxville

Handle Timber Buyers

\* Artwood Handle Company  
Wapakoneta

BELMONT COUNTY

Sawtimber Buyers

\* Clyde Wittmer  
329 Sycamore St., Barnesville

Harry Burns  
Bethesda

Clive & Duard Blaney  
Bethesda

Guy & Dwight Blaney  
Bethesda

Robert Blaney & Son  
Bethesda

Specialty Logs

Clyde Wittmer  
329 Sycamore St., Barnesville

W. J. Plumley  
Somerton

Face and Commercial  
Veneer Timber Buyers

Clyde Wittmer  
329 Sycamore St., Barnesville

Harry Burns  
Bethesda

---

BROWN COUNTY

Sawtimber Buyers

Earl G. Moon  
Mt. Orab

W. R. Moon & Sons  
Mt. Orab

Talbert Lumber Company  
Sardinia

O. C. Wade & Son  
Russellville

Face and Commercial  
Veneer Timber Buyers

Ed Francis  
Sardinia

Earl G. Moon  
Mt. Orab

W. R. Moon & Sons  
Mt. Orab

Talbert Lumber Company  
Sardinia

O. C. Wade & Son  
Russellville

Cooperage Timber Buyers

\* Eastern Timber Products, Inc.  
Fayetteville



BUTLER COUNTY

Sawtimber Buyers

Leslie Hiler  
Okeana

Paulin Sawmill  
Trenton

---

CARROLL COUNTY

Sawtimber Buyers

\* Olie & Ernest Harper  
Rt. #4, Carrollton

Richard Russell  
Dellroy

Lowdermilk Brothers  
Rt. #2, Carrollton

John Rutledge  
Rt. #2, Carrollton

H. S. Miller  
Rt. #1, Minerva

C. R. Worley  
Waynesburg

Paul Oyer  
Kensington

Shuttle Bolt Timber

Roberts Brothers  
Carrollton

Fred Davenport & Donald George  
Carrollton

---

CHAMPAIGN COUNTY

Sawtimber Buyers

Edinger Brothers Sawmill  
Bloomfield & Julia Aves., Urbana

William Mattox  
Rt. #1, Cable

Warren & Dick Runkle  
Rt. #2, St. Paris

Claude Johnson  
Mingo

Post Timber Buyers

Catawba Elevator, Inc.  
Rt. #1  
Mechanicsburg

Rosewood Grain Company  
Rosewood

Warren & Dick Runkle  
Rt. #2  
St. Paris

CLARK COUNTY

Sawtimber Buyers

Buffenbarger Lumber Company  
South Charleston

Jacob Johnson  
Rt. #3, Springfield

Post Timber Buyers

Buffenbarger Lumber Company  
South Charleston

H. E. Brubaker Elevator Co.  
Garfield Ave., New Carlisle

Face and Commercial  
Veneer Timber Buyers

Buffenbarger Lumber Company  
South Charleston

---

CLERMONT COUNTY

Sawtimber Buyers

Clyde Earls & Sons  
Bethel

Pulpwood Buyers

H. C. Hill, Jr.  
Rt. #1, Felicity

J. P. Quesenberry  
Rt. #4, Batavia

Homer Seibert  
Rt. #3, Batavia

---

CLINTON COUNTY

Sawtimber Buyers

Clarence Camp  
Wilmington

Robert Klepinger  
556 N. Spring St.  
Wilmington

Homer Waldron  
Rt. #4, Wilmington

Face and Commercial  
Veneer Timber Buyers

Robert Klepinger  
556 N. Spring St.  
Wilmington

Pulpwood Buyers

F. W. Davis  
Box 266, New Vienna

Glen Rhonermus  
73 College St.  
Sabina

Handle Timber Buyers

Robert Klepinger  
556 N. Spring St.  
Wilmington

COLUMBIANA COUNTY

Sawtimber Buyers

Kenneth E. Bell  
Rt. #2, Columbiana

Wilbur Cheatwood  
Wellsville

James J. Cuddleback  
North Georgetown

R. J. Echols  
Salineville

Ferguson & Tolson  
Salineville

N. E. Haessly & Son  
RFD, Salem

P. F. Pilmer  
Rt. #1, East Rochester

Reeder Lumber Co.  
Kensington

Fred Rose  
Lisbon

R. A. Whan  
Rt. #2, Leetonia

J. R. Willison  
Rt. #2, Minerva

Edward Wood  
Rt. #4, Alliance

Container Veneer Timber Buyers

Decort Basket Company  
RFD, Salem

COSHOCTON COUNTY

Sawtimber Buyers

Max Barrick  
Coshocton

W. F. Wright & Son  
Warsaw

R. I. Boyd  
West Lafayette

Ned Wright  
Nellie

H. L. Cabot & Son  
West Lafayette

Face and Commercial  
Veneer Timber Buyers

C. E. Gallion & Son  
Rt. #2, Brinkhaven

Barrick Brothers  
Box 358, Coshocton

Delbert Gallion & Son  
Plainfield

Container Veneer Timber Buyers

Hamilton Lumber Company  
Fresno

C. E. Gallion & Son  
Rt. #2, Brinkhaven

Floyd Hawkins  
Rt. #1, Brinkhaven

Floyd Hawkins  
Rt. #1, Brinkhaven

Harold Marquand  
Box 362, Coshocton

Lou E. Hunt  
Rt. #4, Coshocton

R. E. Rodock  
Rt. #1, Walhonding

Slabwood Buyers

Walter Taylor  
Nellie

\* Stone Container Corp.  
Coshocton

M. B. Waters  
Blissfield

---

CRAWFORD COUNTY

Sawtimber Buyers

Fred A. Hoss  
Chatfield

Stuckman Farm & Sawmill  
Rt. #4, Bucyrus

R. D. Karg  
North Robinson

L. H. Tupps Hardwood Lbr. Co.  
Box 114, Galion

CUYAHOGA COUNTY

Sawtimber Buyers

- \* A. W. Hinchcliff, Inc.  
580 Westwood Drive  
Strongsville
- \* Klausner Cooperage Company  
5207 Grant, Cleveland
- Clark Miller  
Bedford
- Whalen Lumber Company  
Box 792, Cleveland

Container Veneer Timber Buyers

- Asplin Basket Company  
3776 W. 150th St.  
Cleveland
- \* Praase Basket Company  
4327 Mayfield Road  
Cleveland
- Rocky River Basket Company  
Rocky River
- Cooperage Timber Buyers
- \* Klausner Cooperage Company  
5207 Grant, Cleveland

---

DARKE COUNTY

Sawtimber Buyers

- Lawrence Bretz  
Bradford
- Drew Brothers Lumber Co.  
Sater Street, Greenville
- Lawrence Rutschilling  
Rt. #1, Yorkshire

- \* Stephens Lumber Company  
Arcanum
- Post Timber Buyers
- Greenville Lumber Co.  
Martin St., Greenville

---

DEFIANCE COUNTY

Sawtimber Buyers

- H. E. Grandey  
Rt. #1, Edgerton
- Charles Kuhn & Sons  
Rt. #1, Defiance
- Ney Lumber Company  
Ney

- Harley Roehrig  
Rt. #4, Defiance
- Ross Sanford  
Rt. #8, Defiance
- Handle Timber Buyers
- \* Crook, Son & Company  
Hicksville



DELAWARE COUNTY

Sawtimber Buyers

Earl Dunham  
Rt. #4, Delaware

H. T. Potter  
Leonardsburg

Harry Lake  
Sunbury

Clyde Fisher  
RFD, Delaware

Handle Timber Buyers

\* A. C. Miller Company  
Delaware

Misc. Log and Bolt Buyers

Delaware Lumber Company  
Delaware (sucker rods)

Post Timber Buyers

Delaware Farmers Exchange  
395 W. Williams St., Delaware

---

ERIE COUNTY

Sawtimber Buyers

Peerless Lumber Company  
Sandusky

Nelson Ferber  
Berlin Heights

Container Veneer Timber Buyers

American Crayon Company  
Sandusky

\* Berlin Fruit Box Company  
Berlin Heights

Pulpwood Buyers

\* Celotex Corporation  
Avery

---

FAIRFIELD COUNTY

Sawtimber Buyers

Carl K. Dupler  
1422 E. Wheeling St.  
Lancaster

Harry B. Wagner  
Rt. #1, Baltimore

FAYETTE COUNTY

Sawtimber Buyers

Willis Lumber Company  
525 Millikan Avenue  
Washington Court House

McCoy Sawmill  
Rt. #2,  
Washington Court House

Post Timber Buyers

Willis Lumber Company  
525 Millikan Avenue  
Washington Court House

---

FRANKLIN COUNTY

Sawtimber Buyers

O. J. Aldrich  
2512 Briggs Road  
Columbus

Capital Hardwood Lumber Company  
140 W. Whittier  
Columbus

John Heimerl  
1986 McKinley Ave.  
Columbus

Frank Straub  
1858 Alum Creek Dr.  
Columbus

L. E. Young  
Lockbourne

Post Timber Buyers

Farmers Exchange  
Westerville

Farmers Exchange  
Grove City

---

FULTON COUNTY

Sawtimber Buyers

John L. Christy  
Archbold

Eberly Mill & Supply Co.  
Zenobia Street  
Wauseon

R. S. Franklin  
Rt. #1, Swanton

Morris Roth  
Fayette

Smith Brothers  
Rt. #2, Morenci, Michigan

GALLIA COUNTY

Sawtimber Buyers

Easton Ballard  
Porter

Homer Shriver  
Rt. #2, Gallipolis

James & Thurman Boggs  
Gallipolis

Leslie Small  
Crown City

Finley Cotton  
Rt. #1, Patriot

Sam Waugh  
Bladen

Donald H. Cramer  
Rt. #1, Vinton

Face and Commercial  
Veneer Timber Buyers

Guy Edwards  
Patriot

Finley Cotton  
Rt. #1, Patriot

Dale Gleason  
Vinton

Pulpwood Buyers

Miller E. Grube  
Patriot

\* G. V. Quickle  
(W. Va. Pulp & Paper Co.)  
Vinton

Charles Lambert  
Bladen

Cooperage Timber Buyers

Perry Lambert  
Rt. #2, Gallipolis

Finley Cotton  
Rt. #1, Patriot

Samuel M. Miller  
Patriot

---

GEAUGA COUNTY

Sawtimber Buyers

\* Allegheny Lumber Company  
Rt. #4, Chardon (Hambden)

\* G. G. Kleinschrot  
Box 46, Welchfield

Maurice Bartholomew  
Burton

Container Veneer Timber Buyers

\* Don Farinacci  
Chardon

Henry Hostetler  
Chardon

Grand River Hardwood Lumber Co.  
Chardon

Post Timber Buyers

Donald C. Jackson  
Newbury

Henry Rose  
Burton

GREEN COUNTY

Sawtimber Buyers

C. M. Moody  
Rt. #2, Xenia

---

GUERNSEY COUNTY

Sawtimber Buyers

James Anderson  
Kimbolton

Mansel McCormick  
Quaker City

F. B. Fairchild  
Box 28, Cambridge

J. O. Tilton  
Byesville

Floyd Lumber Company  
Quaker City

Container Veneer Timber Buyers

F. B. Fairchild & Son  
Box 28, Cambridge

---

HAMILTON COUNTY

Sawtimber Buyers

Cleve Dunaway  
Rt. #1, Cleves

William Raisch  
Rt. #2, Mt. Healthy

A. D. St. John  
318 Terrace Ave.  
Cincinnati 20

Pulpwood Buyers

\* Philip Carey Mfg. Company  
Lockland

Grover Bustle  
379 Elliott Avenue  
Arlington Heights

Ova Bustle  
116 W. Benson St.  
Reading

Container Veneer Timber Buyers

Cincinnati Veneer Company  
4411 Este Avenue  
Cincinnati

Cleve Dunaway  
Rt. #1, Cleves

Eugene Lobenstein  
Rt. #3, Harrison

Face and Commercial  
Veneer Timber Buyers

Cleve Dunaway  
Rt. #1, Cleves

Roy Owens  
125 Pearl St., Reading

Albert Sullender  
624 Blanch Ave.  
Arlington Heights

Cincinnati Veneer Company  
4411 Este Avenue  
Cincinnati

R. H. Wall  
137 N. Maple Ave.  
Sharonville

HANCOCK COUNTY

Sawtimber Buyers

Harvey Cole  
Mt. Blanchard

Theron Edie  
Rt. #1, Arlington

Howard Rickle  
Mt. Blanchard

---

HARDIN COUNTY

Sawtimber Buyers

Oborn Lumber Company  
Rt. #1, Kenton

Charles Wedertz  
Rt. #1, Dunkirk

---

HARRISON COUNTY

Sawtimber Buyers

Virgil Bertine  
Freeport

Joe Grabits  
Rt. #2, Cadiz

Cliford Butler  
Rt. #3, Freeport

L. D. Latham & Sons  
Freeport

A. B. Cozier  
Freeport

George McFadden  
Rt. #2  
Freeport

Cozier Brothers  
Tippicanoe

H. M. Palmer  
Jewett

Mary Eve  
Rt. #1, Jewett

Fred Whiteman  
Scio

J. B. Gardner  
Tippicanoe



HENRY COUNTY

Sawtimber Buyers

Julius Hoffman  
Holgate

Modern Lumber Company  
Rt. #1, Liberty Center

Vernon Hoffman  
Rt. #1, Liberty Center

Face and Commercial  
Veneer Timber Buyers

A. Honeck & Son  
RFD, Malinta

E. E. Eddy  
Liberty Center

---

HIGHLAND COUNTY

Sawtimber Buyers

Belleson Lumber Co.  
Sinking Springs

\* Smith & Hopkins  
Hillsboro

C. C. Florence  
Rt. #1, Lynchburg

Steve Sonner  
Winkle

E. G. Louderback  
Box 91, Hillsboro

Face and Commercial  
Veneer Timber Buyers

Glen Mills  
Rt. #1, Greenfield

\* Pierson Hollowell Company  
Hillsboro

James M. Morgan  
N. Elm St., Hillsboro

Smith & Hopkins  
Hillsboro

HOCKING COUNTY

Sawtimber Buyers

Jacob Bainter  
Rt. #1, Rockbridge

\* Sun Glo Furniture Co.  
Logan

\* A. M. Bierley  
Rt. #2, Logan

J. E. Stuart  
Rockbridge

Carl W. Butterick  
Rt. #4, Logan

H. E. Sudlow  
Rt. #2, Logan

Diesel Brothers  
South Perry

Harold Thompson  
Laurelville

Roy & Floyd Hart  
Rt. #2  
South Bloomingville

\* Virgil Todd  
Rt. #1  
New Plymouth

Charles Kessler  
Rt. #4, Logan

Francis Tubbs  
Star Route, Logan

Jesse Kitchen  
South Bloomingville

Jesse Vorhes  
Rt. #2, Rockbridge

Charles Linn  
Rt. #3, Logan

Lewis Wagner  
South Bloomingville

Harry Mercer  
Rt. #1, Logan

Lester Whitcraft  
South Bloomingville

Walter North  
732 N. Market St.  
Logan

Pulpwood Buyers

W. J. Bozett  
681 E. Front St.  
Logan

Harley & Calvin Poling  
Rt. #4, Logan

Robert Ricketts  
Rt. #2, Logan

Post Timber Buyers

Elbert McBroom  
Rt. #2, Logan

Everett Sater  
Rt. #1, Rockbridge

HOLMES COUNTY

Sawtimber Buyers

Clyde Armstrong Big Prairie	R. J. Patterson Lumber Co. Holmesville
Clinage Lumber Co. Millersburg	Adley Schlabach Charm
Conners Lumber Company Killbuck	Jacob J. Schrock Rt. #2, Sugar Creek
V. J. Erb Charm	* Wagers Brothers Corp. Clark
James Gray Glenmont	* Chris N. Yoder Rt. #1, Millersburg
* Hipp Lumber Company Millersburg	<u>Handle Timber Buyers</u>
Albert Keim Charm	Harold Ezri Millersburg
Dan A. Mast Rt. #1, Barrs Mills	<u>Cooperage Timber Buyers</u>
	* General Cooperage, Inc. Box 176, Loudenville

---

HURON COUNTY

Sawtimber Buyers

Carl S. Burrows Rt. #2, Wakeman	Claude N. Smith 31 N. Main St., Greenwich
Lester Ellis Rt. #1, Greenwich	<u>Face and Commercial Veneer Timber Buyers</u>
Earl Herner Rt. #2, Monroeville	Lester Ellis Rt. #1, Greenwich
E. E. Knotts Rt. #3, Wakeman	<u>Pulpwood Buyers</u>
	Clarence (Jim) Sitterly 138 N. Pleasant St. Norwalk

JACKSON COUNTY

Sawtimber Buyers

Krieg Lumber Company  
Wellston

Roy McCarter  
Rt. #4, Jackson

Harvey McWhirter  
Rt. #2, Wellston

Phil Meldick  
Rt. #3, Oak Hill

David Zinn  
Rt. #4, Jackson

Slabwood Buyers

Oak Hill Charcoal Co.  
Oak Hill

Victory Charcoal Co.  
Oak Hill (Roy Allen)

---

JEFFERSON COUNTY

Sawtimber Buyers

\* Allen Box Company  
Bergholz

Charles Croni  
Hammondsville

R. F. Croskey  
Amsterdam

Rupert Eckels  
Rt. #2, Toronto

George Ellis  
Bergholz

Charlie Hoobler  
Hammondsville

Howard Kirkpatrick  
East Springfield

Lee Simmons  
Bloomingdale

Skidmore & Son  
112 S. 8th St.  
Steubenville

Frank Wade  
Bergholz

Cooperage Timber Buyers

Tom Perkins  
Anapolis

KNOX COUNTY

Sawtimber Buyers

L. D. Bartlett  
Fredericktown

Arthur Beale  
Fredericktown

L. E. Blaisdell  
Fredericktown

Fred Chambers  
Mt. Vernon

\* Paul Crouch  
RFD, Mt. Vernon

Clyde Ferenbaugh  
Danville

Cecil Jackson  
Bangs

Carl Morehouse  
42 W. Sandusky St.  
Fredericktown

C. L. Norris  
Danville

Smithhisler and Smith  
Danville

Owen Wheatcraft  
Butler

Cooperage Timber Buyers

Clyde Ferenbaugh  
Danville

Face and Commercial  
Veneer Timber Buyers

Clyde Ferenbaugh  
Danville

C. L. Norris  
Danville

---

LAKE COUNTY

Sawtimber Buyers

Mason Bixler  
Rt. #1, Painesville

R. F. Covell  
Rt. #2, Perry





LOGAN COUNTY

Sawtimber Buyers

John W. Hess  
Zanesfield

\* E. B. Miller Sawmill  
Lewistown

Von P. Predmore  
Rt. #2, Bellefontaine

Post Timber Buyers

Farmers Supply Company  
West Liberty

Face and Commercial  
Veneer Timber Buyers

E. B. Miller Sawmill  
Lewistown

---

LORAIN COUNTY

Sawtimber Buyers

\* Aldrich Lumber Company  
Wellington

Charles & Floyd Bryant  
Oberlin

Si Buchs & Sons  
Rt. #2, Oberlin

---

LUCAS COUNTY

Sawtimber Buyers

Miles Coleman  
Rt. #5, Swanton

William Van Orman  
Holland

Miscellaneous Log & Bolt Buyers

R. G. Haley Co., Inc.  
Spitzer Bldg.  
Toledo  
(Telephone poles)

---

MADISON COUNTY

Sawtimber Buyers

George Wickline  
Olive and Mound Sts.  
London

Miscellaneous Log & Bolt Buyers

Ohio Willow Wood Company  
Mt. Sterling  
(Art. Limb Mfg.)

Post Timber Buyers

Farmers Exchange  
London

MAHONING COUNTY

Sawtimber Buyers

Canfield Manufacturing Company  
Canfield

\* Ohio Hardwood Lumber Co.  
1617 Belmont Ave., Youngstown

Roy Feters  
1510 Millicent Ave.  
Hubbard

Stambaugh-Voorhees  
Youngstown

Carl E. Hively  
Rt. #3, Garfield

Cooperage Timber Buyers

James Martin  
McGuffy Road  
Lowellville

---

MARION COUNTY

Sawtimber Buyers

Gast Lumber Company  
Prospect

\* Baker Wood Division  
D. B. Frampton & Company  
Marion

Mitchell Lumber Yards  
Marion

Post Timber Buyers

Farm Bureau  
Marion

---

MEDINA COUNTY

Sawtimber Buyers

G. A. Boreman  
Rt. #1, Lodi

Swingle Lumber Company  
Litchfield

\* Lodi Lumber Company  
Lodi

Face and Commercial  
Veneer Timber Buyers

A. I. Root Company  
Medina

G. A. Boreman  
Rt. #1, Lodi

MEIGS COUNTY

Sawtimber Buyers

Guy Bolin  
Rt. #3, Albany

Coy Hawk  
Rt. #2, Long Bottom

Denver Carman  
RFD, Pomeroy

\* Ohio Valley Manufacturing Co.  
Tuppers Plains

Ivan Carman  
Rt. #2, Pomeroy

B. K. Ridenour  
Chester

H. A. Cole Lumber Co.  
Tuppers Plains

Guy L. Swadley  
Langsville

Allan Grueser  
Rutland

Archie Tuttle  
Chester

Lewis Grueser & Sons  
Pomeroy

Ike Wooten  
Carpenter

Harold Hawk  
Rt. #1, Minersville

Slabwood Buyers

\* Ohio Valley Manufacturing Co.  
Tuppers Plains

---

MERCER COUNTY

Sawtimber Buyers

Andrews Sawmill  
Rt. #1, Rockford

Steinbrunner Lumber Company  
Rt. #1, Fort Recovery

Lawrence Rutschilling  
St. Henry

Yaney Hardwood Company  
Rt. #5, Celina

MIAMI COUNTY

Sawtimber Buyers

Dress Lumber Company  
E. Spring St.  
Covington

\* Hartzell Industries, Inc.  
1025 S. Roosevelt Avenue  
Piqua

Luckey and Steinhilber Sawmill  
Rt. #2, Box 26, Piqua

Post Timber Buyers

Russell's Elevator  
S. Walnut St.  
Fletcher

Paul Gearhart  
Rt. #1, Casstown

Face and Commercial  
Veneer Timber Buyers

Sylvan Cost (Hartzell Ind. Inc.)  
612 Cherry St., Piqua

Dress Lumber Company  
E. Spring St., Covington

\* Hartzell Industries, Inc.  
1025 S. Roosevelt Ave., Piqua

K. L. Higgins (Hartzell Ind. Inc.)  
Lockington

Ralph Pence (Hartzell Ind. Inc.)  
639 Wood St., Piqua

Roger Peterson (Hartzell Ind. Inc.)  
1104 Lake St., Piqua

John E. Phillips (Hartzell Ind. Inc.)  
1415 Forrest Ave., Piqua

---

MONROE COUNTY

Sawtimber Buyers

F. S. Christman  
Rt. #1, Lewisville

Cox Lumber Company  
Woodsfield

\* R. J. Haren  
Woodsfield

Muth Herndon  
Rt. #4, Woodsfield

Noah Hisson  
Antioch

Arthur Lude  
Clarington

Nelson Smithberger  
Box 639  
Woodsfield



MONTGOMERY COUNTY

Sawtimber Buyers

Charles E. Thomas  
Rt. #1, Miamisburg

---

MORGAN COUNTY

Sawtimber Buyers

Ed Blind  
Stockport

H. W. Fuller  
McConnelsville

\* Clawson Lumber Company  
Malta

Maynard Gruey  
Malta

A. R. Dille  
Stockport

Cortley Wallace  
Stockport

\* Earich Bros. Lumber Co.  
Box 252, Malta

---

MORROW COUNTY

Sawtimber Buyers

Floyd Faust  
Cardington

Hoy Fisher  
Marengo

W. E. Green  
Mt. Gilead

Post Timber Buyers

Farm Bureau  
Mt. Gilead

Face and Commercial  
Veneer Timber Buyers

T. L. Losey  
Mt. Gilead

MUSKINGUM COUNTY

Sawtimber Buyers

\* Finlaw Lumber Company  
Zanesville

R. E. Hunter  
Blue Rock

Harry K. Johnson  
Zanesville

I. W. Mayfield  
Nashport

Herman Nice & Son  
Sonora

Grant Simpson  
Nashport

Harvey Vickers  
Adams Mills

Cooperage Timber Buyers

Cowan Stave Company  
Box 267, Zanesville

Southeastern Ohio Timber Products Co.  
Lee Street, Zanesville

Container Veneer Timber Buyers

F. C. Greiner  
Rt. #1, Chandlerville

Face and Commercial  
Veneer Timber Buyers

Southeastern Ohio Timber Products Co.  
Lee Street, Zanesville

Chipped Wood Buyers

Ferro-Alloy Corp.  
Philo

Handle Timber Buyers

Southeastern Ohio Timber Products Co.  
Lee Street, Zanesville

Pulpwood Buyers

Southeastern Ohio Timber Products Co.  
Lee Street, Zanesville

Slabwood Buyers

Roseville Charcoal Mfg. Co.  
Box 1188, Zanesville

---

NOBLE COUNTY

Sawtimber Buyers

Clyde Crum  
Caldwell

Lewis Crum  
Caldwell

Donald Morris  
Rt. #5  
Caldwell

OTTAWA COUNTY

Sawtimber Buyers

Charles Magsig  
Woodville

T. B. N. Lumber Company  
Oak Harbor

Price Lumber Company  
Oak Harbor

Container Veneer Timber Buyers

\* Ottawa Basket Company  
Elmore

---

PAULDING COUNTY

Sawtimber Buyers

Emanuel Polter  
Rt. #1, Cecil

Forrest Williamson  
Latty

---

PERRY COUNTY

Sawtimber Buyers

Robert Bell  
Junction City

George Nelson  
Junction City

Dagar Lumber Co.  
Moxahala

Face and Commercial  
Veneer Timber Buyers

\* Howdysshell Lumber Co.  
105 S. Main St.  
New Lexington

Thomas W. Johnson  
Somerset

Thomas W. Johnson  
Somerset

---

PICKAWAY COUNTY

Sawtimber Buyers

Loren Finley  
Rt. #2  
Ashville

Frank Tedrow  
Ashville

Whitt Lumber Yard  
Circleville

PIKE COUNTY

Sawtimber Buyers

\* Clarence Adams  
Beaver

Adams Brothers  
Rt. #1, Peebles

Bapst Brothers  
Beaver

Arthur & Harold Barker  
Rt. #2, Piketon

Howard Elliott  
Rt. #2, Bainbridge

Clyde & Clarence Knisely  
Rt. #1, Peebles

C. C. Shanks & Sons  
Rt. #1, Peebles

Arnold Stephenson  
Rt. #2, Bainbridge

C. A. Williamson  
Latham

Pulpwood Buyers

Bowlus Lumber Co.  
Idaho

---

PORTAGE COUNTY

Sawtimber Buyers

Dana Brewster  
Rt. #1, Kent

A. R. Carlisle  
Atwater

Neil Gotham  
Garrettsville

Gudhardt & Sons  
Garrettsville

Willard Kalley  
Deerfield

G. W. Reiss  
Rt. #2, Hardsville

Jack C. Slagle  
Mantua

Container Veneer Timber Buyers

\* Asplin Basket Company  
Garrettsville

Guy Root  
Mantua

Sufficol & Son Basket Company  
Wayland

PREBLE COUNTY

Sawtimber Buyers

\* Heistand & Company  
Eaton

Pulpwood Buyers

O. C. Campbell  
Rt. #1, Camden

Face and Commercial  
Veneer Timber Buyers

Don C. Hamner  
Rt. #1  
Eaton

---

PUTNAM COUNTY

Sawtimber Buyers

E. Gerding  
Rt. #3, Ottawa

Lanwehr Lumber Company  
Ottawa

Fred Laubenthal  
1004 E. 3rd St., Ottawa

Virgil Recker  
Rt. #4, Ottawa

Schmitz Brothers Lumber Co.  
Rt. #3, Ottawa

Paul Wagner  
Rt. #4, Leipsic

Face and Commercial  
Veneer Timber Buyers

Orval Achors  
1429 E. Third St.  
Ottawa  
(D. R. Webb Co. Inc.)  
Edinburg, Indiana)

---

RICHLAND COUNTY

Sawtimber Buyers

Ed Dolphin  
Rt. #5, Mansfield

\* Kaple Lumber Company  
New Washington

\* K. & K. Lumber Company  
New Washington

Marion Lutz  
Rt. #5, Mansfield

Mansfield Reformatory  
Mansfield

Howard McLaughlin  
Rt. #4, Mansfield  
44

J. A. Reeder & Sons  
Butler

Schneider Lumber Company  
Rt. #1, Lexington

\* Swisher Lumber Company  
Shelby

Clark & Roy Teeter  
Rt. #1, Belleville

Post Timber Buyers

Fred R. Scott  
Butler



ROSS COUNTY

Sawtimber Buyers

\* Bainbridge Sawmill & Lumber Yard  
Bainbridge

M. C. Tackett  
Rt. #5, Chillicothe

John C. Baumgartner  
Bainbridge

Clark Walley  
Rt. #1, Bainbridge

C. W. Chambliss  
Rt. #1, Bainbridge

Face and Commercial  
Veneer Timber Buyers

M. C. Elam  
Rt. #2, Chillicothe

Bainbridge Sawmill & Lumber Yard  
Bainbridge

Frank E. Good  
Rt. #5, Chillicothe

Post Timber Buyers

Haney Lumber Company  
Chillicothe

Haney Lumber Company  
Chillicothe

Husted & Cartwright  
Rt. #1, Spargursville

McClure's Warehouse  
Bainbridge

Floyd King  
Chillicothe

Pulpwood Buyers

Albert Knisley  
Bainbridge

\* The Mead Corporation  
Herbert L. Morgan, Mgr.  
Wood Producement  
Chillicothe

John Knisley  
Bainbridge

W. C. Knisley  
Bainbridge

Cooperage Timber Buyers

Jess Looney  
Bainbridge

Bainbridge Sawmill & Lumber Yard  
Bainbridge

Raymond Poole  
Rt. #1, Lyndon

SANDUSKY COUNTY

Sawtimber Buyers

W. R. Giles  
212 South Collingwood  
Fremont

O. D. Gschwing & Sons  
Rt. #4  
Fremont

Frank E. Peters  
324 White St., Clyde

Container Veneer Timber Buyers

W. R. Giles  
212 South Collingwood  
Fremont

---

SCIOTO COUNTY

Sawtimber Buyers

Buck Blackburn  
RFD, Minford

Albert Courtwright  
Rt. #2, Wheelersburg

Roy Cox & Sons  
Box 86, Otway

Ora Hackworth  
Rt. #1, Rushtown

Clark Kallum  
Box 38, Rarden

Joe Koenig  
Otway

A. B. Lykins  
Rt. #4, Lucasville

Charles Lykins  
South Webster

William McGinnis  
South Webster

Sherman Mershon  
5624 Cherry St.  
Sciotoville

Chester Newman  
Rt. #1, Minford

Clarence Newman  
Sciotoville

W. J. O'Brian  
Rt. #1, Otway

Ray Osborn  
Rt. #1, Otway

John M. Penn  
Otway

\* Sliger Lumber Company  
602 Jackson Avenue  
Huntington, W. Va.  
(One mill in Scioto County)

\* Taylor Lumber Company  
Rt. #1, Rushtown

Bruce Young  
RFD, Minford

Cross Tie Buyers

\* Koppers Company  
102 Front St., Marietta  
(Portsmouth Tie Yard)

SENECA COUNTY

No Buyers

---

SHELBY COUNTY

Sawtimber Buyers

R. T. Eschmeyer  
Rt. #1, Botkins

Fort Loramie Sawmill  
Fort Loramie

W. F. Korn & Sons  
Rt. #1, Anna

P. & E. Lumber Company  
Rt. #1, Anna

---

STARK COUNTY

Sawtimber Buyers

Kenneth E. Brown Lumber Co.  
Box 428, Massillon

Stanley Provost, Jr.  
Rt. #1, Navarre

Levi Keim  
Beach City

Face and Commercial  
Veneer Timber Buyers

Chalmer Coss  
Rt. #3, Minerva

Norman S. Woods  
North Canton

Ralph Jackson  
Rt. #2, Minerva

Container Veneer Timber Buyers

David E. Rummell  
Rt. #1, Paris

\* Asplin Basket Company  
Hartville

Hardwood, Inc.  
Box 922, Alliance  
(Agent - L. A. Wayne, Homeworth)

Mine Prop Buyers

Cyril Gates  
Canton

---

SUMMIT COUNTY

Sawtimber Buyers

Bert Felix  
Venervera Road, Talmage

Face and Commercial  
Veneer Timber Buyers

C. Van Oakes  
West Richfield

Allen Post  
Hudson

Container Veneer Timber Buyers

Schnabel Lumber Co.  
Cuyahoga Falls

Akron Basket Company  
Rt. #6, Akron

TRUMBULL COUNTY

Sawtimber Buyers

Amato Brothers Lumber Co. Bristolville	Wade Keptner RFD, Cortland (Fowler)
George Blaney Box 1036, Hartford	* John N. Morris Lumber Co. Rt. #5, Vienna
Dahmen Lumber Co. Cortland	* Lee Patchin Third St., West Farmington
Carl Hites West Farmington	Elmer L. Philbrick, Jr. Rt. #1, Farmdale
Frank Hites West Farmington	Elmer W. Philbrick Rt. #1, Kinsman
* Frank B. James Phalanx Station	<u>Container Veneer Timber Buyers</u>
* Kane Lumber Company Box 146, Cortland	Frank B. James Phalanx Station

---

TUSCARAWAS COUNTY

Sawtimber Buyers

Arnold Lumber Company Uhrichville	Dean Jarvis Stillwater
George Auman Lumber Company Dover	B. A. Kohl Gnadenhutten
Baltic Lumber Company Baltic	* Marsh Lumber Company Dover
Harry Berger Rt. #1, Newcomerstown	Harry Moomaw Rt. #1, Dover
J. P. Foracker Newcomerstown	Peters Brothers Lumber Co. Rt. #3, Newcomerstown
* Garber Lumber Company Strasburg	Emmet Ripley Gilmore
Warner Grewell Gnadenhutten	* John J. Yoder & Sons Rt. #2, Sugar Creek
Hunt Brothers Rt. #1, Newcomerstown	<u>Face and Commercial Veneer Timber Buyers</u>

UNION COUNTY

Sawtimber Buyers

Boyce & Penhorwood Sawmill  
West Mansfield

Forest Price  
Rt. #1, Richwood

Fulton Creek Lumber Company  
Rt. #3, Richwood

Post Timber Buyers

Plain City Hardwood Lumber Co.  
Box 12, Plain City

Union County Farm Bureau  
N. Franklin St., Richwood

---

VAN WERT COUNTY

Sawtimber Buyers

Earl E. Baker  
Rt. #1, Ohio City

Schwartz Brothers  
Rt. #1, Spencerville

R. T. Eschmeyer  
Rt. #1, New Knoxville

Fred A. Smith Lumber Co.  
Rt. #1, Willshire

VINTON COUNTY

Sawtimber Buyers

\* Andrew Adelman  
McArthur

Russell Mercer  
Rt. #2, McArthur

Glen Albright  
Rt. #1, Londonderry

Roy Rienhart  
Rt. #1, McArthur

Clarence Barnett  
Rt. #2, McArthur

Leslie Rose  
McArthur

Russell Barnett  
Rt. #2, McArthur

Raymal Rose  
McArthur

J. W. Bishop & Son  
Rt. #1, Ewington

T. R. Sowers  
Rt. #1, McArthur

Tom Carpenter  
McArthur

Charles Waldron  
Rt. #1, Hamden

Lloyd H. Clary  
Rt. #2  
South Bloomingville

John Waldron  
McArthur

Ralph Clary  
Rt. #2  
South Bloomingville

Paul Waldron  
Rt. #1, Hamden

S. E. Clary  
Londonderry

Newman Warthman  
Rt. #2, New Plymouth

Post Timber Buyers

\* D. B. Frampton & Company  
McArthur Division  
McArthur

\* McArthur Post & Lumber Company  
McArthur

Charley Fuller  
New Plymouth

Slabwood Buyers

\* D. B. Frampton & Company  
McArthur Division  
McArthur

Ray Hart & Carl Kinner  
Rt. #1, McArthur

Cross & Switch Tie Buyers

\* J. M. Jackson  
Ewington

\* D. B. Frampton & Company  
McArthur Division  
McArthur

\* Woodrow Jeffers  
Radcliff

Kruger Brothers  
Rt. #1, McArthur

\* Kopper's Co., Inc.  
Hamden



WARREN COUNTY

Sawtimber Buyers

Gordon Lamb  
Rt. #1, Lebanon

F. D. Lehman  
Morrow

F. D. Lehman  
Morrow

Pulpwood Buyers

Face and Commercial  
Veneer Timber Buyers

Paul Knight  
Oregonia

Gordon Lamb  
Rt. #1, Lebanon

Richard Mullins  
Rt. #2, Franklin

F. D. Lehman  
Morrow

A. R. Powell  
Oregonia

Handle Timber Buyers

Gordon Lamb  
Rt. #1, Lebanon

R. E. Switzer  
Cozaddale

---

WASHINGTON COUNTY

Sawtimber Buyers

Carlton Anderson  
Fleming

W. M. Martin  
Beverly

\* Croy Lumber Company  
Box 323, Marietta

Container Veneer Timber Buyers

Belpre Lumber Co.  
Belpre

\* Marietta Fruit Package Company  
Marietta

Ernest Huck  
Marietta

Cooperage Timber Buyers

W. D. Male  
Cutler

M. & M. Stave Company  
Coal Run

WAYNE COUNTY

Sawtimber Buyers

C. G. Boreman  
Rt. #1, Burbank

Earl Forbes  
West Salem

E. P. Gerber & Sons  
Kidron

T. U. Gilbert & Son  
Smithville

Leo Graber  
Fredericksburg

Olin E. & Welden E. Henning  
Lincoln St., West Salem

Henry Hershberger  
Rt. #2, Apple Creek

J. A. Hoy  
Rt. #4, Wooster

Atlee Hunsinger  
Mt. Eaton

Jim Jeffers  
Rt. #1, Creston

R. D. Shook  
Apple Creek

Face and Commercial  
Veneer Timber Buyers

J. A. & C. R. Hoy  
Rt. #4, Wooster

C. G. Boreman  
Rt. #1, Burbank

Container Veneer Timber Buyers

C. G. Boreman  
Rt. #1, Burbank

T. J. Boreman  
Rt. #1, Burbank

Jim Jeffries  
Rt. #1, Creston

\* McIntire Basket Co.  
Creston

---

WILLIAMS COUNTY

Sawtimber Buyers

Bryan Builders Market  
800 E. Edgerton St.  
Bryan

Herman Franks  
North Defiance St.  
Stryker

Hugs Lumber Mill  
Edon

Pelts Lumber Mill  
Box 178  
Pioneer

Container Veneer Timber Buyers

Edon Manufacturing Company  
Edon

WOOD COUNTY

Sawtimber Buyers

John Beckstein  
Weston

Lester C. Johnson  
Rt. #2  
Perrysburg

William King  
North Baltimore

---

WYANDOT COUNTY

Sawtimber Buyers

Beck Lumber Company  
RFD, Carey

Niederkoehr  
Upper Sandusky

Ray Dotts  
Nevada

Face and Commercial  
Veneer Timber Buyers

Evans Lumber Company  
RFD, Upper Sandusky

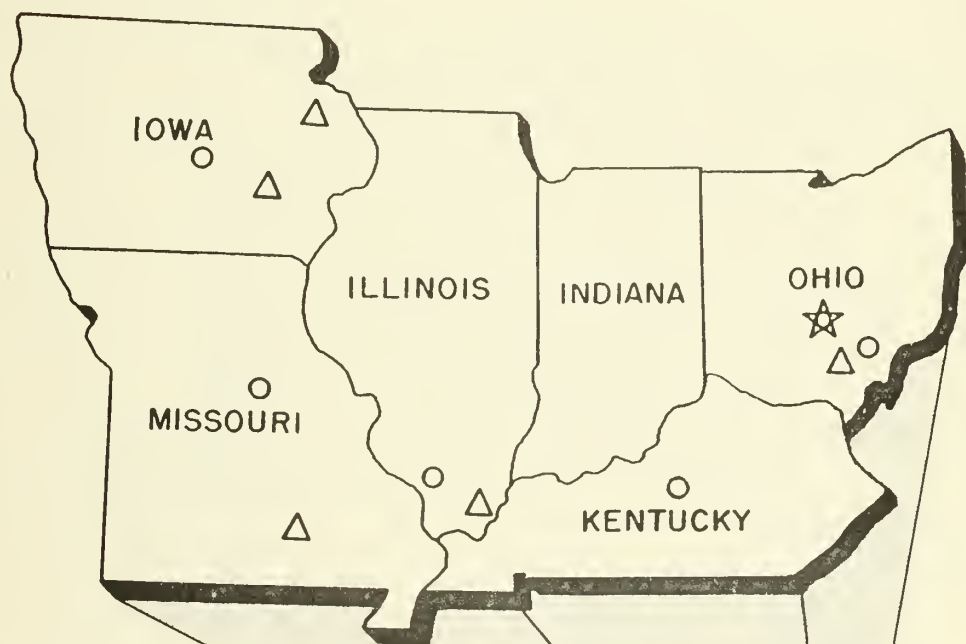
V. E. Vance  
Nevada



TERRITORY SERVED BY THE  
CENTRAL STATES FOREST EXPERIMENT STATION

FOREST SERVICE

U. S. DEPARTMENT OF AGRICULTURE



★ C. S. F. E. S. HEADQUARTERS

○ RESEARCH CENTER

△ EXPERIMENTAL FOREST



