

NPS ARCHIVE
1958
PICKENS, J.

WORK WITH A NOBLE GAS
SCINTILLATION COUNTER

JACKSON R. PICKENS

DUDLEY KNOX LIBRARY
NAVAL POSTGRADUATE SCHOOL
MONTEREY CA 9 943-5101

UNIVERSITY OF CALIFORNIA

Radiation Laboratory
Berkeley, California

Contract No. W-7405-eng-48

WORK WITH A NOBLE GAS SCINTILLATION COUNTER

Jackson R. Pickens

"

May 21, 1958

Submitted in partial fulfillment
of the requirements for the degree of

MASTER OF SCIENCE

IN

PHYSICS

United States Naval Postgraduate School
Monterey, California

NPS ARCHIVE

1958

PICKENS, J.

~~TOP SECRET~~
~~1958~~

OFFICE OF THE DIRECTOR
NATIONAL PARK SERVICE
WASHINGTON, D. C. 20540

MEMORANDUM FOR THE DIRECTOR

FROM: J. PICKENS

DATE: 1958

SUBJECT: [Illegible]

[Illegible]

[Illegible]

[Illegible]

[Illegible]

Table of Contents

Title	Page
Abstract	3
Introduction	4
General	6
Electronics	10
Gas-Purification System	10
Experimental Procedures	14
Results	19
Appendix: Circuit Diagrams	29
Bibliography	33

WORK WITH A NOBLE GAS SCINTILLATION COUNTER

Jackson R. Pickens

Radiation Laboratory
University of California
Berkeley, California

May 21, 1958

ABSTRACT

More than 1450 runs have been made and analyzed with a noble gas scintillation counter and its associated equipment. The counter itself consists of a special photomultiplier tube looking into a scintillation chamber, and is used in conjunction with a vacuum and filling system, an output-pulse amplification system, and a 12-channel pulse-height analyzer.

Because gas contamination presented a major problem, a dynamic gas-purification system was designed and effectively employed. Adequate mixing of the binary mixtures of argon and helium was a second major problem and was solved by a specially designed diaphragm pump and by close control of the flow of the constituent gases.

Although the results obtained were most conclusive with pure argon and pure helium, sufficient work was completed on intermediate mixtures of these two gases to indicate that further investigation in this direction is appropriate. It is planned that future investigations will be made using xenon and krypton.

WORK WITH A NOBLE GAS DIFFUSION DOUBLE

JACQUES B. PÉREZ

California University
University of California
Berkeley, California

May 21, 1958

ABSTRACT

More than 1500 hours have been spent in the laboratory with a noble gas diffusion double. The counter level consists of a special component which has been modified in order to be used in conjunction with a vacuum and isolation chamber, and is used in conjunction with a vacuum and filling system, an output-amplifier system, and a 12-channel pulse-height analyzer.

A study of communication between a major problem in research gas-transportation system was developed and analyzed. The data source of the study consists of a type and number of a major problem and was solved by a special design program and by other means of the type of the experimental data. Although the results obtained were very satisfactory with gas-transportation system, a further study was carried out in order to obtain a further study of the system. It is planned that further studies will be carried out in the near future.

WORK WITH A NOBLE GAS SCINTILLATION COUNTER

Jackson R. Pickens

Radiation Laboratory
University of California
Berkeley, California

May 21, 1958

INTRODUCTION

Gaseous scintillation counting essentially involves detecting the light emitted by gas molecules that have been excited or ionized by the passage of a charged particle. The first successful attempts in this direction employing the noble gases were made by Carl Muehlhause¹ in 1953, using pure argon and pure helium and detecting Pu alpha particles. His work was closely followed in the same year by Segrè and Wiegand,² who showed that the light output of an argon counter increased with the application of an electric field. In this case, the gas cell was actually operating as a proportional counter except that light, rather than electrons, was used to measure the event.

In their first satisfactory gas cell, Egger and Huddleston³ used argon at a pressure of 5 atmospheres and were able to obtain a resolution of 15% for 5.4-Mev Pu²³⁸ alpha particles. A plastic wave shifter was used to shift the ultraviolet light into the visible region, but its use unfortunately introduced a contaminant into the system which gradually decreased pulse heights with time. The counter reported by Robert W. Dickieson has eliminated the need for a wave shifter by using a quartz window on the scintillation chamber.⁴

It is the purpose of the report which follows to extend the experimental range of the work started by T. M. Jenkins of the Radiation Laboratory and by Dickieson.⁴ Indeed, the majority of the theory, planning, procurement of equipment, and initial organization of this experiment was done by them. For all these very necessary efforts, the writer is especially and sincerely grateful.

Further, the author wishes to express his appreciation to Dr. Burton J. Moyer and Dr. Roger W. Wallace for their encouragement and supervision. Particularly, the author is grateful to T. M. Jenkins, Technician, whose interest and direct participation in most phases of the experimental work were invaluable.

This work was done in part under the auspices of the U. S. Atomic Energy Commission.

GENERAL

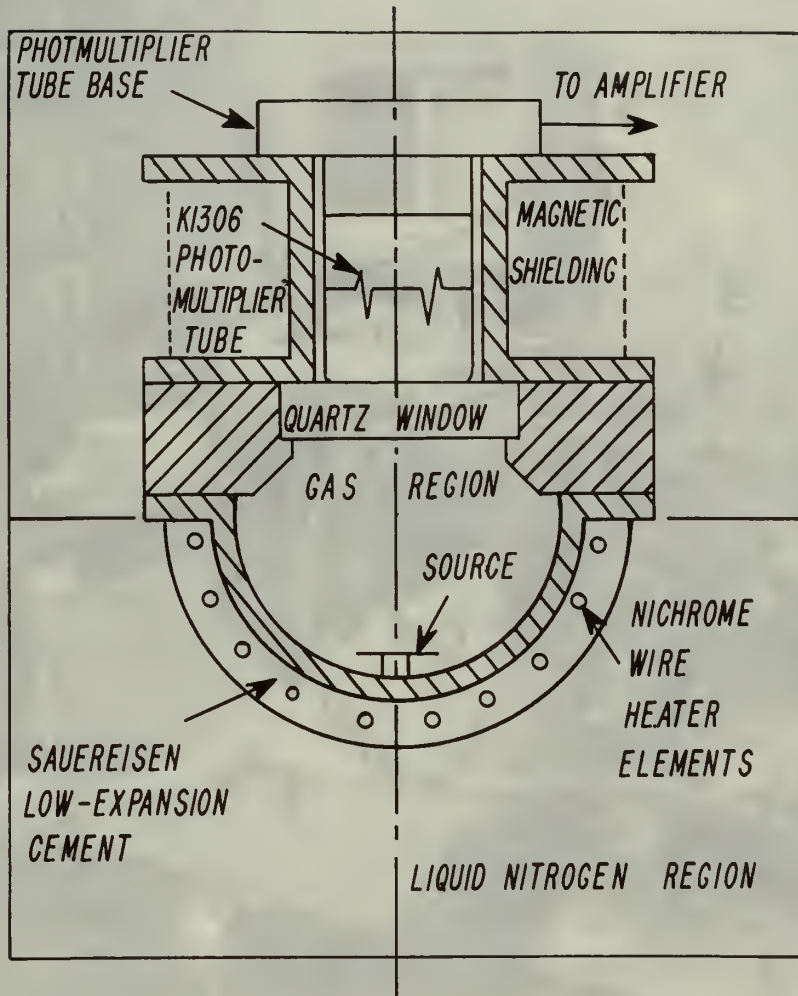
Basically, gaseous scintillation counting involves establishing a system whereby the light output of gas molecules that have been excited or ionized by charged particles may be detected, measured, and analyzed. Most of the efforts in this field have dealt with the noble gases, both primary and in mixtures. The major differences in these efforts have consisted of variations in methods of purification of the basic gas or gases, the geometry of the counter proper, and the extent and general arrangement of the associated systems necessary for the control of the physical constituents and for the measurement and analysis of the experimental data.

In this experiment, a dynamic gas-purification system has been employed (it is covered in detail in a subsequent section). This system keeps gas of high purity continuously available. Additionally, the scintillation chamber has a quartz window, thus eliminating the necessity for a wave shifter and hence eliminating the possibility of contamination of the gas from this source.

The original design of the chamber itself was a steel circular cylinder 7 inches deep (source to quartz end window) and 4 inches in diameter. The inner surface of this chamber was coated with aluminum oxide for good light scattering. The original geometry and surface were modified, however, and the present configuration is as shown in Fig. 1. The modified chamber is constructed of cold rolled steel and the inner surface is aluminized for good light reflection.

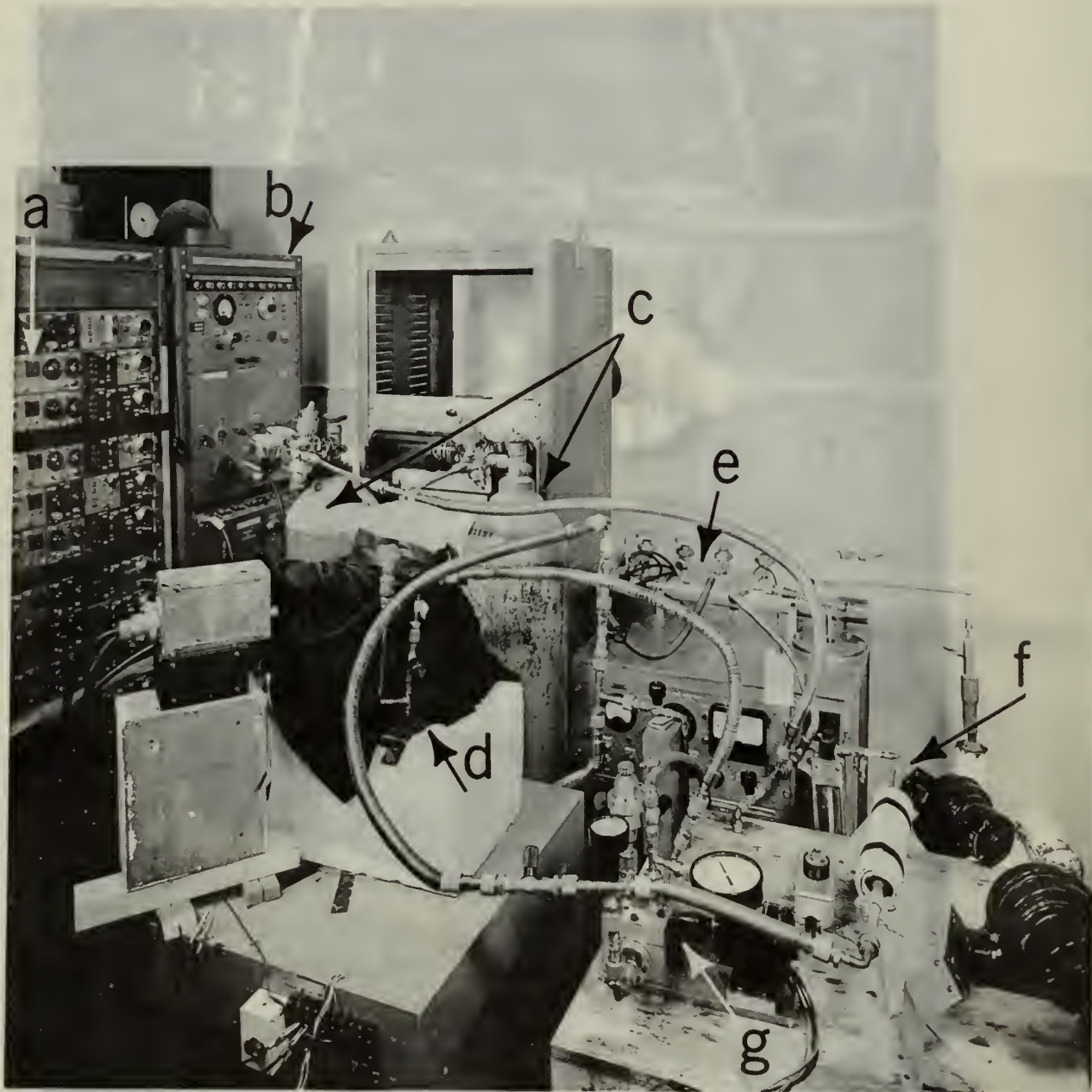
The entire system is constructed to be vacuumtight and can withstand up to 165 psi, although most of the data were obtained in the range from vacuum conditions up to 75 psi. A photograph of the general arrangement of the system is shown in Fig. 2 and a close-up of the scintillation-chamber stack in Fig. 3. Subsidiary systems necessary for conduct of the experiment are covered in detail in the following pages.

The various conditions of temperature and pressure--from approximately $+22^{\circ}\text{C}$ to -168°C , and from vacuum to 150 psi--were



MU-15,276

Fig. 1. Schematic diagram of scintillation chamber. Chamber is surrounded by a dewar of liquid nitrogen (not shown). Cooling for the photomultiplier tube is provided in the region of magnetic shielding.



ZN-1940

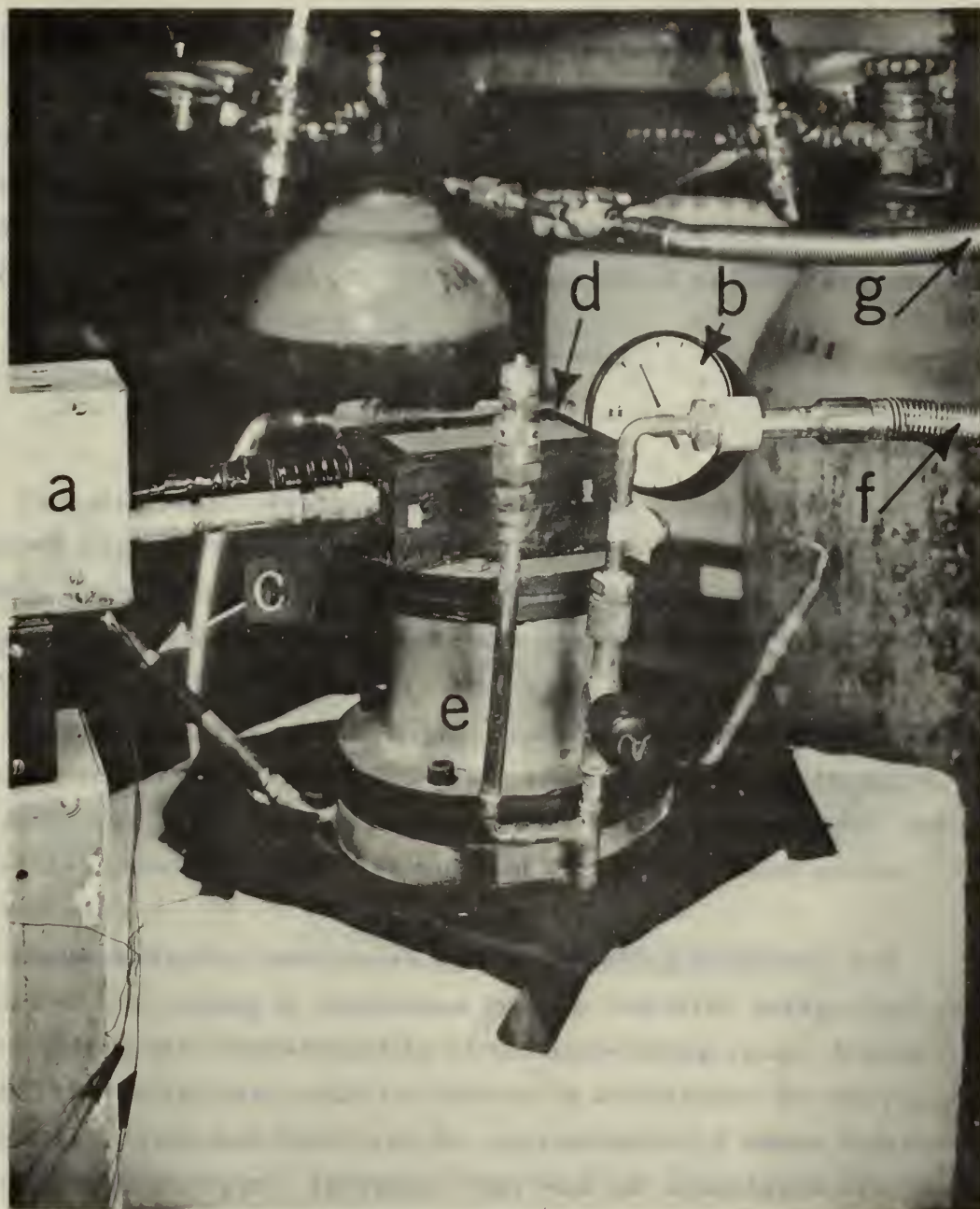
Fig. 2. General arrangement of equipment.

- a. Twelve-channel pulse-height analyzer.
- b. Electronics stack (calibration pulser, linear amplifier, pulse shaper, coaxial switch, power supplies).
- c. Argon and helium supply bottles.
- d. Scintillation chamber stack (see Fig. 3).
- e. Vacuum system.
- f. Gas-purification tube.
- g. Gas-circulating pump.



511-115

- Fig. 1. General appearance of the specimen.
1. The outer surface of the specimen.
 2. The inner surface of the specimen.
 3. The surface of the specimen after treatment with HCl.
 4. The surface of the specimen after treatment with HNO₃.
 5. The surface of the specimen after treatment with HF.
 6. The surface of the specimen after treatment with H₂O₂.
 7. The surface of the specimen after treatment with H₂SO₄.
 8. The surface of the specimen after treatment with H₃PO₄.
 9. The surface of the specimen after treatment with H₂SiO₄.
 10. The surface of the specimen after treatment with H₂CO₃.
 11. The surface of the specimen after treatment with H₂SiO₃.
 12. The surface of the specimen after treatment with H₂SiO₂.
 13. The surface of the specimen after treatment with H₂SiO.
 14. The surface of the specimen after treatment with H₂Si.
 15. The surface of the specimen after treatment with H₂SiO₄.
 16. The surface of the specimen after treatment with H₂SiO₃.
 17. The surface of the specimen after treatment with H₂SiO₂.
 18. The surface of the specimen after treatment with H₂SiO.
 19. The surface of the specimen after treatment with H₂Si.
 20. The surface of the specimen after treatment with H₂SiO₄.
 21. The surface of the specimen after treatment with H₂SiO₃.
 22. The surface of the specimen after treatment with H₂SiO₂.
 23. The surface of the specimen after treatment with H₂SiO.
 24. The surface of the specimen after treatment with H₂Si.
 25. The surface of the specimen after treatment with H₂SiO₄.
 26. The surface of the specimen after treatment with H₂SiO₃.
 27. The surface of the specimen after treatment with H₂SiO₂.
 28. The surface of the specimen after treatment with H₂SiO.
 29. The surface of the specimen after treatment with H₂Si.
 30. The surface of the specimen after treatment with H₂SiO₄.
 31. The surface of the specimen after treatment with H₂SiO₃.
 32. The surface of the specimen after treatment with H₂SiO₂.
 33. The surface of the specimen after treatment with H₂SiO.
 34. The surface of the specimen after treatment with H₂Si.
 35. The surface of the specimen after treatment with H₂SiO₄.
 36. The surface of the specimen after treatment with H₂SiO₃.
 37. The surface of the specimen after treatment with H₂SiO₂.
 38. The surface of the specimen after treatment with H₂SiO.
 39. The surface of the specimen after treatment with H₂Si.
 40. The surface of the specimen after treatment with H₂SiO₄.
 41. The surface of the specimen after treatment with H₂SiO₃.
 42. The surface of the specimen after treatment with H₂SiO₂.
 43. The surface of the specimen after treatment with H₂SiO.
 44. The surface of the specimen after treatment with H₂Si.
 45. The surface of the specimen after treatment with H₂SiO₄.
 46. The surface of the specimen after treatment with H₂SiO₃.
 47. The surface of the specimen after treatment with H₂SiO₂.
 48. The surface of the specimen after treatment with H₂SiO.
 49. The surface of the specimen after treatment with H₂Si.
 50. The surface of the specimen after treatment with H₂SiO₄.



ZN-1939

Fig. 3. Scintillation-chamber stack.

- a. Low-noise preamplifier.
- b. Scintillation-chamber pressure gage.
- c. Kovar seal with connections for thermocouple inside chamber.
- d. Photomultiplier tube base.
- e. Magnetic shielding for photomultiplier tube.
- f. Line leading to gas-circulating pump.
- g. Gas-filling line.



024539

1. 1954
 2. 1954
 3. 1954
 4. 1954
 5. 1954
 6. 1954
 7. 1954
 8. 1954
 9. 1954
 10. 1954

investigated both in primary argon and helium and in mixtures of these two gases. Such wide variations of temperature, pressure, and gas composition made an imposing task of gathering pertinent data. For this reason, some sections of the report that follows contain data and results covering this entire range of conditions; in other sections the treatment is limited to that part of the range which preliminary analysis shows to be of interest.

ELECTRONICS

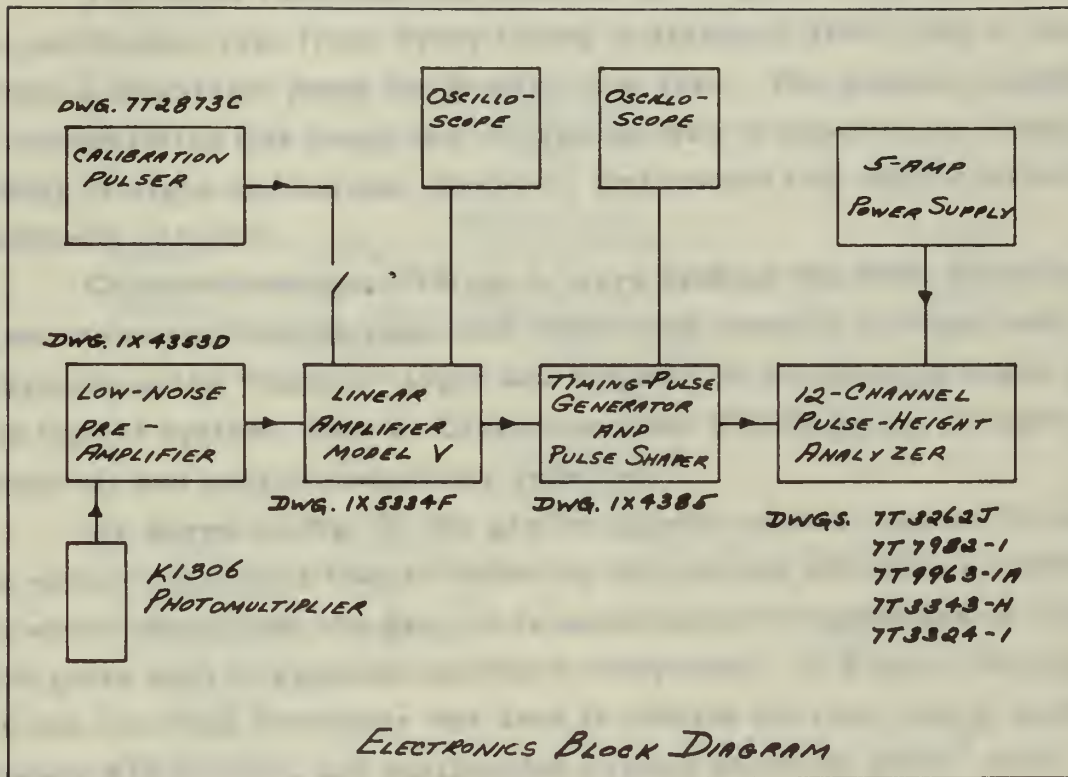
The electronics system employed was as shown in the block diagram of Fig. 4. Circuit diagrams of the low-noise preamplifier, the Model V linear amplifier, the calibrating pulser, and the timing-pulse generator and pulse shaper are presented as Figs. 12 through 15 in the Appendix (pages 29 to 32).

As shown by Fig. 3, the signal from the photomultiplier tube is sent to the low-noise preamplifier (Fig. 12) and then to the Model V linear amplifier (Fig. 13). It is then shaped by the pulse shaper and timing-pulse generator (Fig. 14) and sent to the 12-channel pulse-height analyzer.

Photomultiplier-tube noise was a continuing problem, and necessitated the making of continuous runs to establish background corrections needed for standardization of the data-taking runs. It was found that the noise level could be reduced to a minimum by cooling the photomultiplier tube and tube base for approximately 2 hours beforehand with liquid nitrogen. However, this was not considered necessary for most runs and was not generally done.

GAS-PURIFICATION SYSTEM

In their initial planning of this project, Dickieson and Jenkins decided upon a dynamic gas-purification system.⁴ This was deemed necessary because of the quenching of pulse heights due to contaminants



MU-13426

Fig. 4. Block diagram of electronic components associated with noble gas scintillator. Circuit diagrams of the individual components are in the appendix. K1306 photomultiplier is a special quartz-window tube which eliminated the use of a wave shifter.

in the basic gas system, and permits a final gas of high purity to be continuously available. Although initial efforts in this direction were primarily confined to purifying argon, this system is also suitable for purification of helium. A flow diagram of the system is shown in Fig. 5.

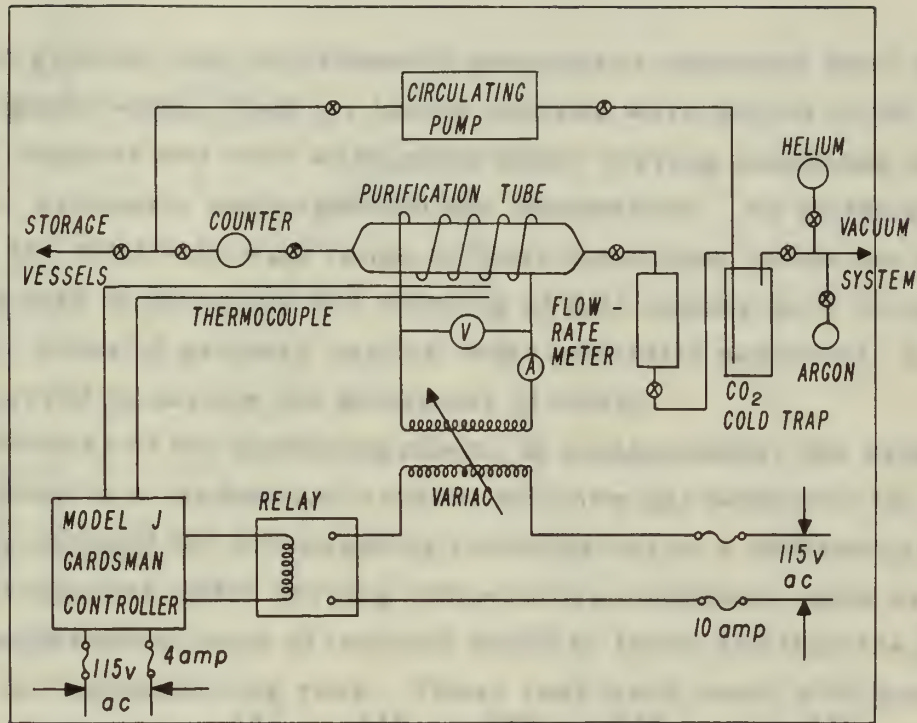
The major modifications made to the original setup were to change the purification tube from Vycor tubing to stainless steel, and to incorporate a diaphragm pump for greater flow rate. The primary purpose of incorporating this pump into the system was to expedite the complete mixing of argon and helium, however, and toward this end its effect was extremely valuable.

Calcium turnings, 97% pure, were used as the basic purifying agent in the purification tube, and effectively removed nitrogen and oxygen from the "impure" argon and helium. In his work on argon with this type of system, Dale S. Gibbs found that 99.93% of the nitrogen was removed, and oxygen completely removed.⁵

As shown in Fig. 5, the gas being purified first passes through the water trap. This trap is cooled by dry ice and effectively removes all water vapor from the gas. It is constructed of copper and is filled with glass wool to preclude moisture carry-over. A Fisher-Porter tri-flat low-flow Flowrator was used to control the flow rate at approximately 830 cc/min, and purification results shown by Gibbs⁵ were obtained.

The purification tube itself was surrounded by 1/16-inch sheet asbestos for insulation, was heated by a nichrome wire heating element, and was maintained at approximately 650^oC by a Gardsman Model J temperature controller in conjunction with an iron-constantan thermocouple. Under these conditions of temperature and flow rate, each charge of calcium turnings can be used to purify approximately 1300 liters of gas before it becomes calcium oxide or calcium nitride.

From the purification tube, the gas goes to the diaphragm pump and then to the scintillation chamber. As can be seen from Fig. 5, provision is made for recirculation of the gas where such recirculation



MU-15,279

Fig. 5. Flow diagram of the gas-purification system. The Gardsman controller maintained the purification tube at approximately 650° C. The cold trap was for removal of the water vapor from the gas.

and the higher-purity gas it permits are necessary or desirable. This entire system is connected to a standard vacuum system consisting of a forepump, a diffusion pump, and associated equipment.

EXPERIMENTAL PROCEDURES

In general, the experimental procedures employed were basic and straightforward. That is, known sources were placed in the scintillation chamber and runs were made under varying conditions of temperature, pressure, and argon-helium composition. As stated previously, the relatively wide range of these conditions inside the chamber made the task of gathering and reducing of data appear quite formidable. However, areas of primary interest were generally narrowed, and this in turn served to narrow the directions of effort.

Because of the quenching effects of contaminants, the system was pumped down to a vacuum and refilled with new gas whenever the setup was being changed for investigating scintillations at a different pressure. For investigations under varying temperature conditions, data over the entire temperature range of interest would be taken and then the gas changed for substantiating runs. These runs were made with numerous sources, including Cm²⁴⁴, Po²¹⁰, Ra²²⁶, Np²³⁷, and Pu²³⁹. The great majority was conducted with the Cm²⁴⁴ source, however, and the curves showing the results (Figs. 6 through 9) are all based on its use. The Cm²⁴⁴ was electroplated on an aluminum disc 0.8 inch in diameter and 5 mils thick, and placed at the bottom of the chamber as shown in Fig. 1, approximately 1 inch from the quartz window of the chamber.

The original data obtained for argon-helium mixtures were inconclusive, primarily because of inconsistent degrees of mixing of these two gases. For almost all mixtures it was found that excessively long periods of time were required for complete mixing to take place. For this reason, a diaphragm pump was designed and built for this system. Its use greatly expedited the mixing of argon and helium and materially reduced the time required for scintillation conditions to stabilize.

and the highest quality life if necessary, a minimum of 100 years.
While the system is designed to be a simple system consisting of
a minimum of 100 years, it is not intended to be a

EXPERIMENTAL PROCEDURE

The first step in the experimental procedure was to
and the system. The system was designed to be a
minimum of 100 years and was designed to be a
simple system consisting of a minimum of 100 years.
The system was designed to be a simple system
consisting of a minimum of 100 years and was
designed to be a simple system consisting of a
minimum of 100 years and was designed to be a
simple system consisting of a minimum of 100 years.

Secondly, the system was designed to be a
simple system consisting of a minimum of 100 years
and was designed to be a simple system consisting
of a minimum of 100 years and was designed to be
a simple system consisting of a minimum of 100
years and was designed to be a simple system
consisting of a minimum of 100 years and was
designed to be a simple system consisting of a
minimum of 100 years and was designed to be a

Thirdly, the system was designed to be a
simple system consisting of a minimum of 100 years
and was designed to be a simple system consisting
of a minimum of 100 years and was designed to be
a simple system consisting of a minimum of 100
years and was designed to be a simple system
consisting of a minimum of 100 years and was
designed to be a simple system consisting of a
minimum of 100 years and was designed to be a

Fourthly, the system was designed to be a
simple system consisting of a minimum of 100 years
and was designed to be a simple system consisting
of a minimum of 100 years and was designed to be
a simple system consisting of a minimum of 100
years and was designed to be a simple system
consisting of a minimum of 100 years and was
designed to be a simple system consisting of a
minimum of 100 years and was designed to be a

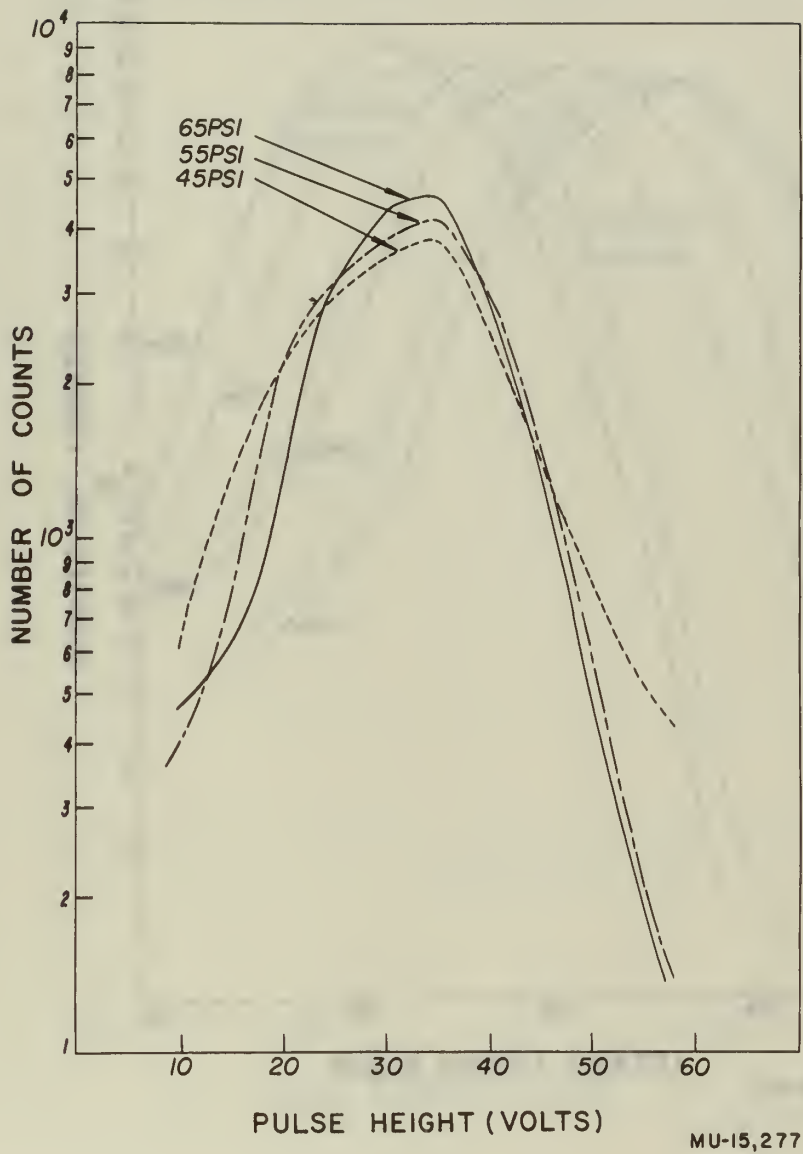


Fig. 6. Pulse height spectra for increasing pressure in argon at 22° C. Cm^{244} source.

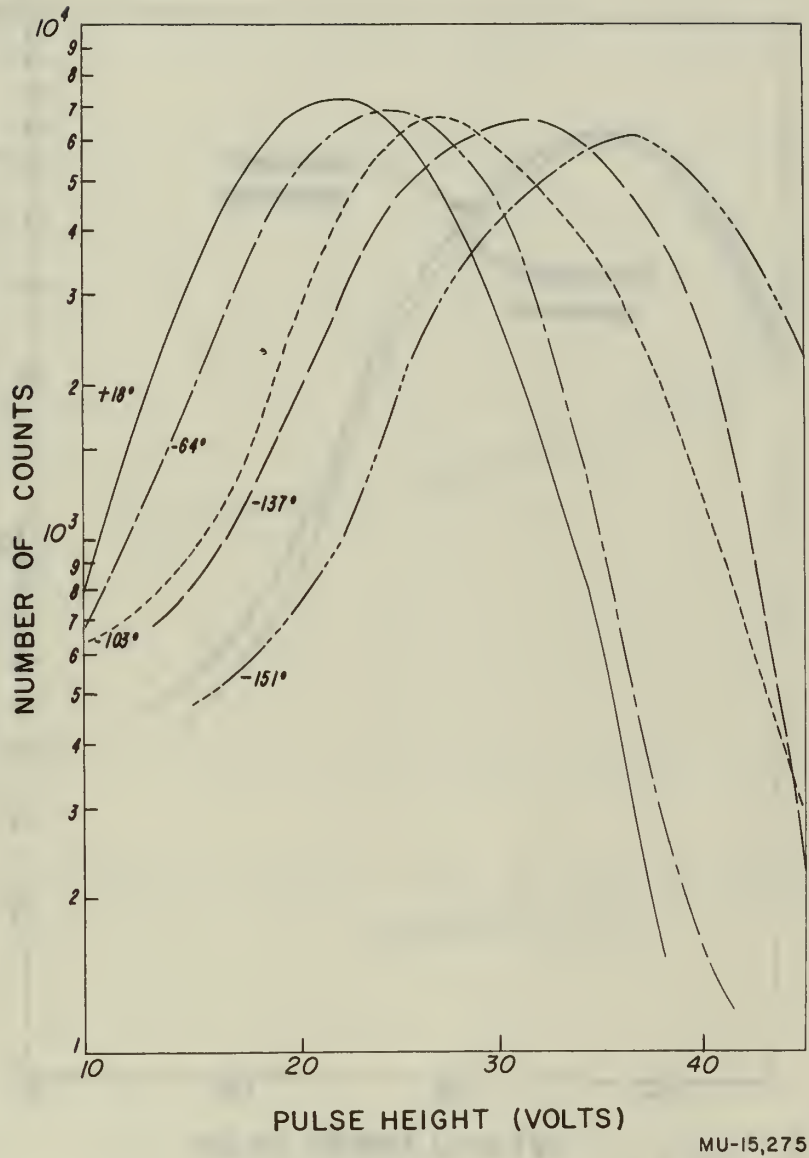


Fig. 7. Pulse height spectra for decreasing temperature in argon at 75 psi. Cm^{244} source.

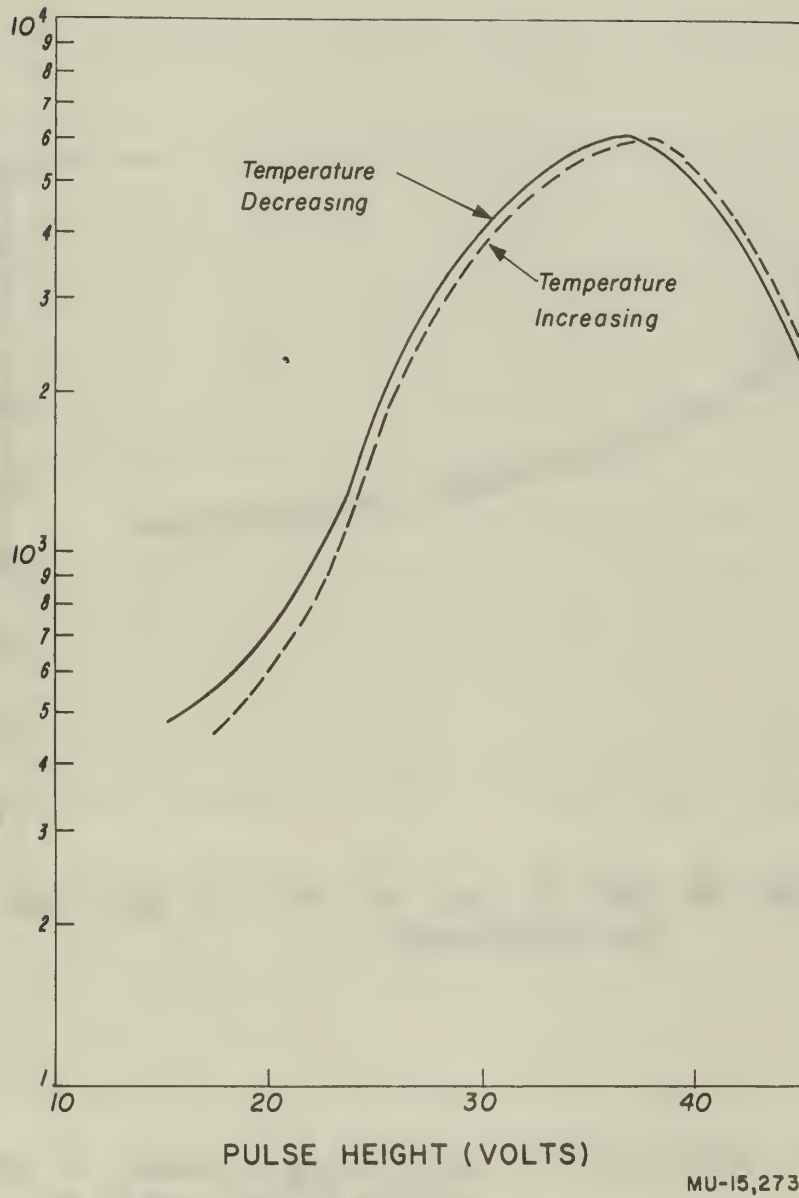


Fig. 8. Comparison of pulse height spectra in argon at 75 psi. Both curves at -151°C .

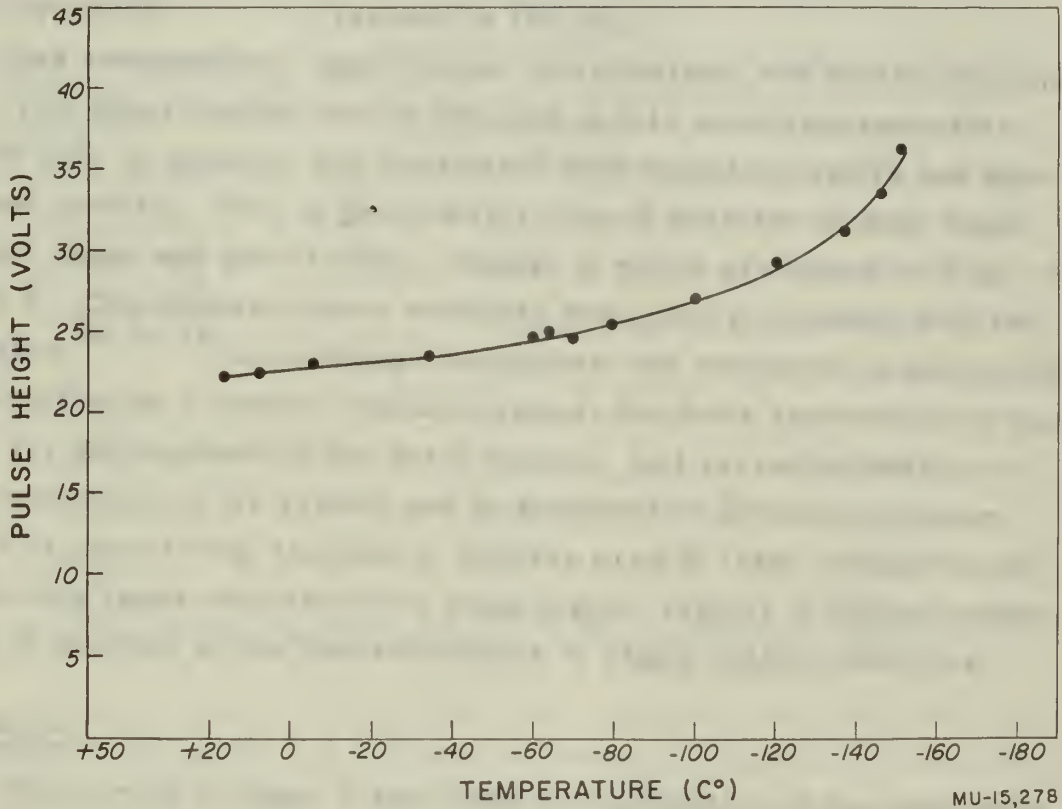


Fig. 9. Maximum pulse height vs. temperature. Pure argon at 75 psi. Cm^{244} source.

RESULTS

General

Analysis was made of more than 1450 runs conducted within the following range of conditions in the scintillation chamber:

temperature: +22° C to -168° C;

pressure: vacuum to 150 psi;

gas composition: pure argon, pure helium, and binary mixtures.

The experimental curves obtained in this work represent this analysis and, in general, are consistent with expected results and with published results. This is particularly true of analyses of runs made with pure argon and pure helium, results of which are shown in Figs. 6 through 9. Considerably more work has been done previously with the pure gases,^{8, 9, 10} and although much time was consumed in analyzing their scintillation response characteristics, the work reported here was largely for development of the basic system, and served primarily to aid in refinement of the system and to substantiate previously known data. It is considered, therefore, that the area of least conclusive evidence in this report and hence the most logical subject of future investigations is analysis of the characteristics of argon-helium mixtures.

Pure Gases

The curves in Figs. 6 and 7 are representative of the work done on the pure gases, and show results obtained for pure argon. Figure 6 represents the change in relative pulse height with change in pressure at a constant temperature, and parallels the results and conclusions obtained by other workers.^{7, 9} The curves show essentially that once the distance from the source to the phototube exceeds the range of the alpha particle in that gas, the increase in pulse height with increase in pressure is very gradual, but the resolution improves markedly. This effect--once a pressure is reached assuring all the alpha particles¹ being stopped in the gas--is probably due to the concentration of the alpha tracks in the center of the chamber as the pressure increases.⁹

Since the distance from the Cm^{244} source to the phototube in the geometry under investigation was approximately 1 inch, it can be seen from Table I that the distance from source to phototube exceeds the range of the alpha particles in argon for all the pressures represented in Fig. 6.

Table I

Ranges of 5.8-Mev alpha particles (Cm^{244}) in argon and helium		
Pressure	Range in argon (in.)	Range in helium (in.)
-20 in. Hg	4.96	26.4
-15 in. Hg	3.31	17.6
-10 in. Hg	2.48	13.2
0	1.65	8.83
20 psi	0.83	4.41
25 psi	0.63	3.31
50 psi	0.38	2.04
75 psi	0.28	1.50
100 psi	0.24	1.26

The curves in Fig. 7 represent the change in relative pulse height with change in temperature at constant pressure, and the results are quickly seen to be totally different from those shown in Fig. 6. By comparison of the two sets of curves, one immediately concludes that improvement in resolution is closely related to an increase in pressure. Temperature change, on the other hand, appears to have little effect upon resolution. (In comparing Figs. 6 and 7, one should note that the voltage scales are not the same.)

It is of interest to note, in analyzing the curves in Fig. 7, that careful plotting of data obtained as temperature was decreased to -151°C showed that they varied slightly from data obtained during the return to room temperature. This variation, shown in Fig. 8, was not great, but significant enough to note, and occurred every time the procedure was

Block III regression from the 1984 survey to the 1980 survey is the focus of my study. I will report the results of the regression analysis in Table 1. The results show that the regression coefficients are significant at the 1% level.

Table 1

Year	Regression Coefficient	Standard Error
1980	0.15	0.02
1981	0.25	0.03
1982	0.35	0.04
1983	0.45	0.05
1984	0.55	0.06
1985	0.65	0.07
1986	0.75	0.08
1987	0.85	0.09
1988	0.95	0.10
1989	1.05	0.11

The results in Table 1 suggest that the regression coefficients are significant at the 1% level. The results also show that the regression coefficients are positive and increasing over time. This suggests that the relationship between the variables is positive and increasing over time.

It is of interest to note that the regression coefficients are significant at the 1% level. This suggests that the relationship between the variables is positive and increasing over time. The results also show that the regression coefficients are positive and increasing over time.

repeated. Since the direction of temperature change (i. e., increasing or decreasing) should in itself be of no significance, it must be assumed that this slight but consistent variation resulted from differing thermal characteristics of the gas and of the phototube itself. A description of the technique involved may make this clearer.

To obtain the data for Fig. 7, argon at 75 psi was introduced into the counter chamber at room temperature. Liquid nitrogen was then introduced into the volume surrounding the chamber (Fig. 1), and data were taken as the temperature in the chamber was lowered to approximately -160°C . The thermocouple used to determine the temperature inside the volume was on the centerline of the volume and approximately 1 inch from the quartz window (Fig. 1). It was necessary to carefully control the input of argon as the temperature decreased in order to maintain the pressure at 75 psi, and similarly, upon warming of the chamber as the temperature returned to $+18^{\circ}\text{C}$, it was necessary to release argon from the chamber to maintain the pressure constant.

The general effect then, as shown in Fig. 7, is a shifting of the curve to the right as temperature decreases. This can be attributed to a combination of two effects as the temperature changes--a change in the scintillation characteristics of the argon, and a change in the response characteristics of the phototube. The variation in results with direction of temperature change is shown in Fig. 8 for -151°C and indicates that the peak of the curve as the temperature returns toward $+18^{\circ}\text{C}$ is displaced slightly to the right of the peak recorded when the temperature is decreasing. The relations between the positions shown for -151°C corresponds almost exactly to those for all temperatures between $+20^{\circ}\text{C}$ and -160°C . This variation is not completely understood, but is probably due to a difference in rate of change of temperature between the argon and the phototube. That is, since the thermocouple measuring the temperature is in the gas volume, it seems likely (from the relative positions of the two peaks in Fig. 8) that the rate of change of temperature of the phototube is less than that of the gas, and that in the case presented, the temperature of the phototube itself is somewhat lower than -151°C .

This variation may not be an important one in certain applications, but should be considered for investigations involving temperature changes and the resultant changes in gas and phototube characteristics.

Figure 9 is a compilation of the results obtained for numerous runs similar to those of Fig. 7. Because liquefaction of argon at 75 psi occurs at -167°C , and a change in scintillation characteristics would likely accompany the change in physical state, it cannot be assumed that the maximum pulse height continues upward and to the right with decreasing temperature, as the curve in Fig. 9 might infer. Investigation of scintillation characteristics of liquid argon was not the purpose of this work, therefore investigation was limited to temperatures higher than -167°C . However, this would be an appropriate extension of the studies reported herein, and it is planned to investigate these characteristics in the future.

Argon-Helium Mixtures

Although other workers have conducted investigations of mixtures of Xe in Kr, Kr in A, and Xe in He without highly promising results,⁷ it was decided to investigate the scintillation characteristics of argon-helium mixtures. Control and qualitative problems immediately presented themselves, but only the problem of complete and consistent degrees of mixing of the two gases turned out to be a difficult one. The importance of complete and adequate mixing of constituent gases for valid results cannot be overemphasized, and it follows naturally that substantiation and statistical strength of results are direct functions of consistent mixing.

The problem of complete mixing was first approached by allowing the constituent gases to stand in the scintillation chamber until such time as scintillation response stabilized. This proved to be an impractical length of time in almost all cases, however, and a diaphragm pump designed and built by Leo Leidy and T. M. Jenkins of the Radiation Laboratory was incorporated into the system (Fig. 4). The use of this pump permitted the mixing time of the gases to be cut down considerably and facilitated the making of many runs in periods of time that had

This section will be devoted to the study of the...
and the results are given in the following...

Figure 1 is a schematic diagram of the...
The results are given in the following...

References

1. J. Doe, "On the theory of...", *Journal of...*
2. A. Smith, "The structure of...", *Journal of...*
3. R. Brown, "The properties of...", *Journal of...*

The author is indebted to...
for their assistance in the...
work.

previously permitted very few to be conducted. In spite of this improvement in technique, the total number of valid mixture runs is considered to be inadequate for conclusive results because a great many of the early mixture runs made were invalidated as experience and operating time indicated that they had been in the "shady area" of incomplete mixing. Consequently, it should be pointed out that the mixture data originating in this report suffer from this numerical inadequacy, and need statistical strengthening before valid conclusions may be drawn.

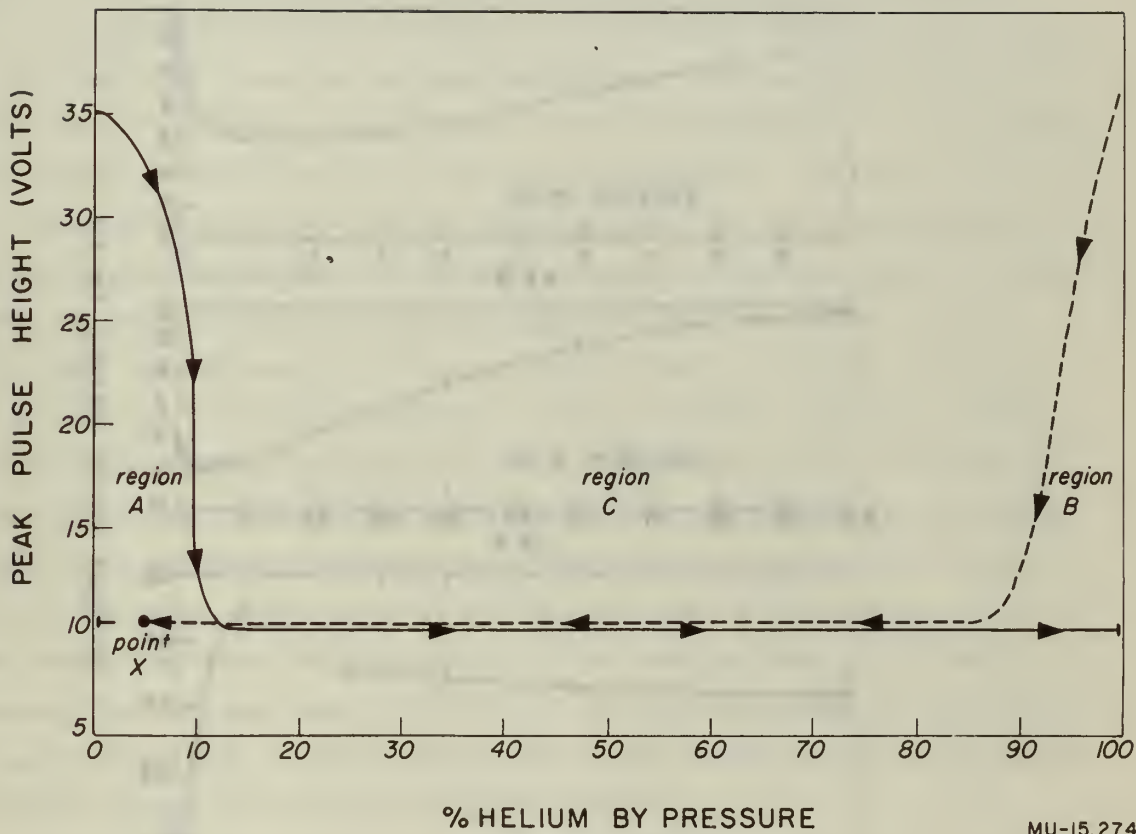
Figure 10 is the basic representation of characteristics of argon-helium mixtures, and may be compared with the characteristics of other binary mixtures in Fig. 11.⁶ The direction of mixture change indicated by the arrows on Fig. 10 is important in analyzing this curve, and indicate two regions that are not understood. That is, in Regions A and B of the curve in Fig. 10, the peak pulse-height values recorded in this investigation consistently depended entirely upon which gas was introduced first. As can be seen by the curve, when helium is being added to pure argon (solid curve), the peak pulse height in Region A was consistently higher than the value recorded in this region when the mixture was approached from pure helium (dashed curve). Conversely, in Region B, the value recorded when the mixture was approached from pure argon was consistently lower than that recorded when the mixture was approached from pure helium.

The procedure used in obtaining values for the solid line of Fig. 10 was to introduce into the evacuated counter chamber the amount of argon required for the desired ratio in a 40-psi mixture. Then helium would be introduced to complete the mixture, and the mixture circulated by the diaphragm pump. With a system volume of approximately 250 cc, a flow rate of 900 cc/min was used to expedite mixing. The procedure employed to obtain the dotted line was to reverse the process above and introduce the helium first, then proceed to obtain a 40-psi mixture in the ratio desired. This immediately leads one to suspect complete mixing as the solution to these apparent inconsistencies, but extremely long periods of mixing time made no significant change in results obtained after scintillation conditions appeared to stabilize.

proceeding, the present report may be considered. In view of the importance of the subject, the following is a brief summary of the results obtained. It is to be understood that the present report is only a preliminary one, and that the results are subject to change as more data are obtained. The following is a brief summary of the results obtained. It is to be understood that the present report is only a preliminary one, and that the results are subject to change as more data are obtained.

The first part of the report is devoted to a description of the apparatus used in the present investigation. The details of the apparatus are given in the Appendix. The results of the present investigation are given in the following sections. The first section is devoted to a description of the results obtained in the present investigation. The results are given in the form of curves and tables. The second section is devoted to a description of the results obtained in the present investigation. The results are given in the form of curves and tables. The third section is devoted to a description of the results obtained in the present investigation. The results are given in the form of curves and tables.

The present report is devoted to a description of the results obtained in the present investigation. The results are given in the form of curves and tables. The first section is devoted to a description of the results obtained in the present investigation. The results are given in the form of curves and tables. The second section is devoted to a description of the results obtained in the present investigation. The results are given in the form of curves and tables. The third section is devoted to a description of the results obtained in the present investigation. The results are given in the form of curves and tables.



MU-15,274

Fig. 10. Relative pulse heights, A-He mixtures. Cm^{244} source. 40 psi total pressure.

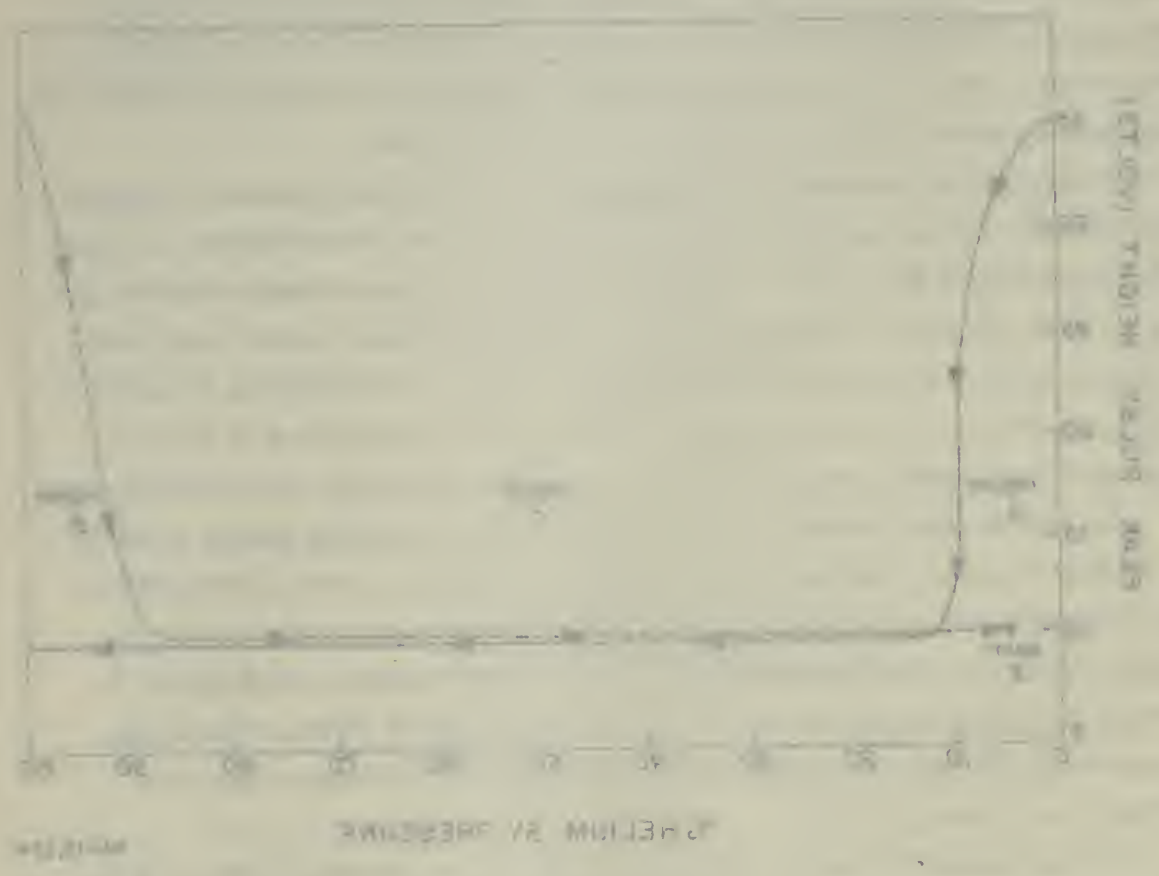
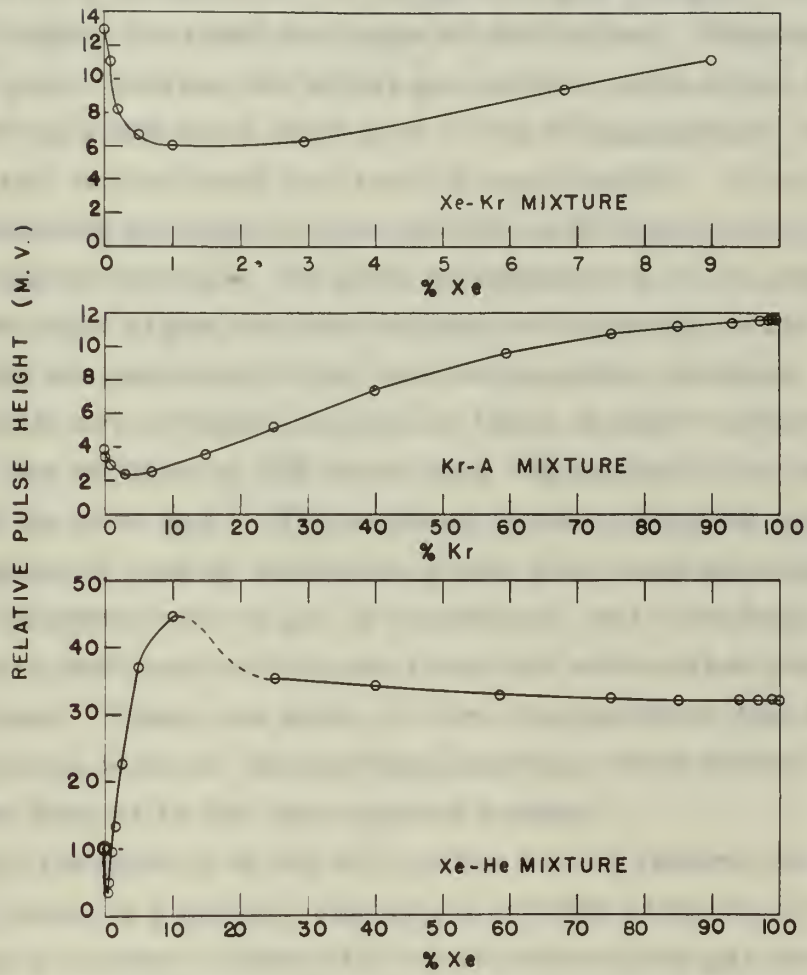


Fig. 10. Helium 2V pressure versus flow rate. Ca^{144} source. at exit test pressure.



MU-15,286

Fig. 11. Plots of relative pulse heights for xenon-krypton, krypton-argon, and xenon-helium mixtures.

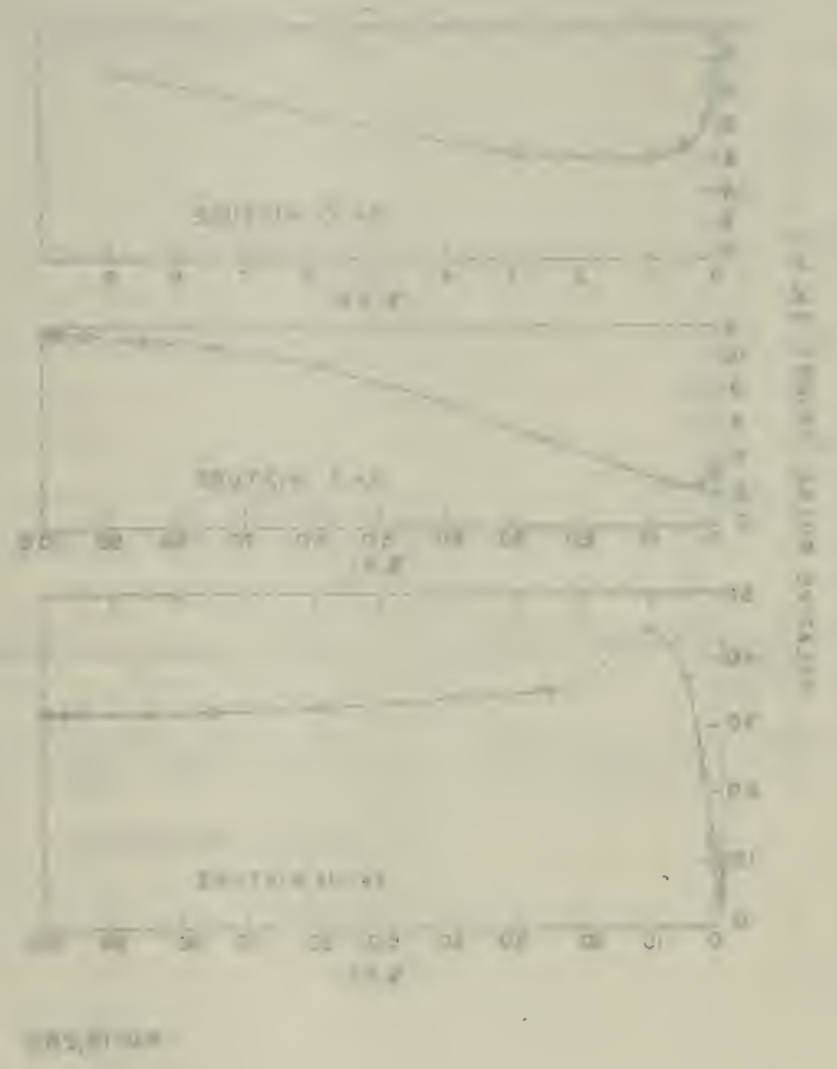


Fig. 11. Plots of relative pressure versus time for various cases. The curves are for Case 1 (top), Case 2 (middle), and Case 3 (bottom).

The conclusion at which one arrives (after it must be assumed that complete mixing has taken place) is that a physical reaction is taking place in the evacuated counter chamber upon introduction of a gas. This reaction, not known at the moment, may vary with gas being introduced, or may be fairly independent of the specific gas being introduced and hence be roughly the same for argon as for helium. Whether this reaction takes place between the initial gas and the walls of the chamber, or between the gas and some other part of the filling system, is not known, but the result is consistent and readily reproducible. From the point of view of obtaining an argon-helium mixture with improved scintillation-response characteristics, the problem appears to be an academic one, because the pure argon and pure helium each appears to have better scintillation characteristics than any intermediate mixture. To this point, results are virtually parallel to those of other workers, which show only the mixture of 10% xenon with 90% helium to be an improvement upon the pure gas.⁶ The problem is an interesting one, however, from the point of view of determining just what does take place in the evacuated chamber when a gas is introduced, and what happens when argon enters that may be different from that which takes place when helium enters. From this point of view, this problem and its solution may well prove to be of considerable practical value toward refinement of systems similar to the one reported herein.

It is the opinion of the writer that a start towards this solution is (a) that there is a definite absorption into the aluminized walls of the chamber of a certain number of the molecules of the gas introduced into the chamber, and (b) that, in fact, the points along the lower of the two lines in both problem regions (the dotted line in Region A and the solid line in Region B) should actually be in Region C.

Another way of making this statement (presently theoretical) is to consider a given point in Region A--say, that point marked "X" (5% He-95% A) on the dotted curve, the curve of values plotted when helium is the gas introduced first into the evacuated chamber. It is submitted that when the helium is introduced into the evacuated

The reaction of water with... (The text is extremely faint and largely illegible. It appears to be a technical or scientific paper discussing a reaction, possibly involving water and a gas, and mentions various experimental conditions and results. Key words that are partially visible include "reaction", "water", "gas", "pressure", "temperature", "rate", "equilibrium", "kinetics", "catalysis", "activation energy", "molar fraction", "partial pressure", "diffusion", "adsorption", "desorption", "isotherm", "kinetic data", "rate constants", "equilibrium constants", "thermodynamic data", "activation parameters", "transition state theory", "collision theory", "molecular dynamics", "Monte Carlo simulation", "molecular beam experiments", "laser spectroscopy", "photoacoustic spectroscopy", "mass spectrometry", "gas chromatography", "infrared spectroscopy", "Raman spectroscopy", "NMR spectroscopy", "X-ray diffraction", "electron microscopy", "scanning tunneling microscopy", "atomic force microscopy", "surface science", "heterogeneous catalysis", "solid-state chemistry", "materials science", "chemical engineering", "environmental science", "biotechnology", "nanotechnology", "energy conversion", "pollution control", "catalytic converters", "hydrogen storage", "fuel cells", "solar energy", "wind energy", "geothermal energy", "nuclear energy", "renewable energy", "sustainable development", "green chemistry", "circular economy", "zero waste", "carbon footprint", "life cycle assessment", "environmental impact", "social responsibility", "corporate governance", "ethical considerations", "stakeholder engagement", "transparency", "accountability", "trust", "reputation", "brand value", "customer loyalty", "employee satisfaction", "organizational culture", "diversity and inclusion", "innovation", "risk management", "crisis management", "business strategy", "competitive advantage", "market research", "customer insights", "data analytics", "artificial intelligence", "machine learning", "blockchain", "cryptocurrency", "digital transformation", "cloud computing", "cybersecurity", "privacy", "data protection", "regulatory compliance", "industry standards", "certifications", "quality management", "continuous improvement", "lean manufacturing", "six sigma", "total quality management", "operational excellence", "supply chain management", "procurement", "logistics", "distribution", "retail", "e-commerce", "digital marketing", "social media", "content marketing", "search engine optimization", "pay per click", "brand awareness", "lead generation", "conversion optimization", "customer retention", "loyalty programs", "referrals", "word of mouth", "influencer marketing", "user-generated content", "community building", "brand advocacy", "customer feedback", "net promoter score", "churn rate", "lifetime value", "customer acquisition cost", "return on investment", "break-even point", "profit margin", "gross margin", "operating margin", "EBITDA", "EPS", "P/E ratio", "market capitalization", "valuation", "IPO", "M&A", "dividends", "share buybacks", "debt-to-equity ratio", "leverage", "interest coverage ratio", "credit rating", "bond yields", "equity yields", "dividend yield", "total return", "volatility", "beta", "correlation", "risk-return trade-off", "portfolio optimization", "asset allocation", "index funds", "ETFs", "mutual funds", "hedge funds", "private equity", "venture capital", "angel investors", "seed funding", "series A", "series B", "series C", "series D", "series E", "series F", "series G", "series H", "series I", "series J", "series K", "series L", "series M", "series N", "series O", "series P", "series Q", "series R", "series S", "series T", "series U", "series V", "series W", "series X", "series Y", "series Z", "series AA", "series AB", "series AC", "series AD", "series AE", "series AF", "series AG", "series AH", "series AI", "series AJ", "series AK", "series AL", "series AM", "series AN", "series AO", "series AP", "series AQ", "series AR", "series AS", "series AT", "series AU", "series AV", "series AW", "series AX", "series AY", "series AZ", "series BA", "series BB", "series BC", "series BD", "series BE", "series BF", "series BG", "series BH", "series BI", "series BJ", "series BK", "series BL", "series BM", "series BN", "series BO", "series BP", "series BQ", "series BR", "series BS", "series BT", "series BU", "series BV", "series BW", "series BX", "series BY", "series BZ", "series CA", "series CB", "series CC", "series CD", "series CE", "series CF", "series CG", "series CH", "series CI", "series CJ", "series CK", "series CL", "series CM", "series CN", "series CO", "series CP", "series CQ", "series CR", "series CS", "series CT", "series CU", "series CV", "series CW", "series CX", "series CY", "series CZ", "series DA", "series DB", "series DC", "series DD", "series DE", "series DF", "series DG", "series DH", "series DI", "series DJ", "series DK", "series DL", "series DM", "series DN", "series DO", "series DP", "series DQ", "series DR", "series DS", "series DT", "series DU", "series DV", "series DW", "series DX", "series DY", "series DZ", "series EA", "series EB", "series EC", "series ED", "series EE", "series EF", "series EG", "series EH", "series EI", "series EJ", "series EK", "series EL", "series EM", "series EN", "series EO", "series EP", "series EQ", "series ER", "series ES", "series ET", "series EU", "series EV", "series EW", "series EX", "series EY", "series EZ", "series FA", "series FB", "series FC", "series FD", "series FE", "series FF", "series FG", "series FH", "series FI", "series FJ", "series FK", "series FL", "series FM", "series FN", "series FO", "series FP", "series FQ", "series FR", "series FS", "series FT", "series FU", "series FV", "series FW", "series FX", "series FY", "series FZ", "series GA", "series GB", "series GC", "series GD", "series GE", "series GF", "series GG", "series GH", "series GI", "series GJ", "series GK", "series GL", "series GM", "series GN", "series GO", "series GP", "series GQ", "series GR", "series GS", "series GT", "series GU", "series GV", "series GW", "series GX", "series GY", "series GZ", "series HA", "series HB", "series HC", "series HD", "series HE", "series HF", "series HG", "series HH", "series HI", "series HJ", "series HK", "series HL", "series HM", "series HN", "series HO", "series HP", "series HQ", "series HR", "series HS", "series HT", "series HU", "series HV", "series HW", "series HX", "series HY", "series HZ", "series IA", "series IB", "series IC", "series ID", "series IE", "series IF", "series IG", "series IH", "series II", "series IJ", "series IK", "series IL", "series IM", "series IN", "series IO", "series IP", "series IQ", "series IR", "series IS", "series IT", "series IU", "series IV", "series IW", "series IX", "series IY", "series IZ", "series JA", "series JB", "series JC", "series JD", "series JE", "series JF", "series JG", "series JH", "series JI", "series JJ", "series JK", "series JL", "series JM", "series JN", "series JO", "series JP", "series JQ", "series JR", "series JS", "series JT", "series JU", "series JV", "series JW", "series JX", "series JY", "series JZ", "series KA", "series KB", "series KC", "series KD", "series KE", "series KF", "series KG", "series KH", "series KI", "series KJ", "series KK", "series KL", "series KM", "series KN", "series KO", "series KP", "series KQ", "series KR", "series KS", "series KT", "series KU", "series KV", "series KW", "series KX", "series KY", "series KZ", "series LA", "series LB", "series LC", "series LD", "series LE", "series LF", "series LG", "series LH", "series LI", "series LJ", "series LK", "series LL", "series LM", "series LN", "series LO", "series LP", "series LQ", "series LR", "series LS", "series LT", "series LU", "series LV", "series LW", "series LX", "series LY", "series LZ", "series MA", "series MB", "series MC", "series MD", "series ME", "series MF", "series MG", "series MH", "series MI", "series MJ", "series MK", "series ML", "series MM", "series MN", "series MO", "series MP", "series MQ", "series MR", "series MS", "series MT", "series MU", "series MV", "series MW", "series MX", "series MY", "series MZ", "series NA", "series NB", "series NC", "series ND", "series NE", "series NF", "series NG", "series NH", "series NI", "series NJ", "series NK", "series NL", "series NM", "series NN", "series NO", "series NP", "series NQ", "series NR", "series NS", "series NT", "series NU", "series NV", "series NW", "series NX", "series NY", "series NZ", "series OA", "series OB", "series OC", "series OD", "series OE", "series OF", "series OG", "series OH", "series OI", "series OJ", "series OK", "series OL", "series OM", "series ON", "series OO", "series OP", "series OQ", "series OR", "series OS", "series OT", "series OU", "series OV", "series OW", "series OX", "series OY", "series OZ", "series PA", "series PB", "series PC", "series PD", "series PE", "series PF", "series PG", "series PH", "series PI", "series PJ", "series PK", "series PL", "series PM", "series PN", "series PO", "series PP", "series PQ", "series PR", "series PS", "series PT", "series PU", "series PV", "series PW", "series PX", "series PY", "series PZ", "series QA", "series QB", "series QC", "series QD", "series QE", "series QF", "series QG", "series QH", "series QI", "series QJ", "series QK", "series QL", "series QM", "series QN", "series QO", "series QP", "series QQ", "series QR", "series QS", "series QT", "series QU", "series QV", "series QW", "series QX", "series QY", "series QZ", "series RA", "series RB", "series RC", "series RD", "series RE", "series RF", "series RG", "series RH", "series RI", "series RJ", "series RK", "series RL", "series RM", "series RN", "series RO", "series RP", "series RQ", "series RR", "series RS", "series RT", "series RU", "series RV", "series RW", "series RX", "series RY", "series RZ", "series SA", "series SB", "series SC", "series SD", "series SE", "series SF", "series SG", "series SH", "series SI", "series SJ", "series SK", "series SL", "series SM", "series SN", "series SO", "series SP", "series SQ", "series SR", "series SS", "series ST", "series SU", "series SV", "series SW", "series SX", "series SY", "series SZ", "series TA", "series TB", "series TC", "series TD", "series TE", "series TF", "series TG", "series TH", "series TI", "series TJ", "series TK", "series TL", "series TM", "series TN", "series TO", "series TP", "series TQ", "series TR", "series TS", "series TT", "series TU", "series TV", "series TW", "series TX", "series TY", "series TZ", "series UA", "series UB", "series UC", "series UD", "series UE", "series UF", "series UG", "series UH", "series UI", "series UJ", "series UK", "series UL", "series UM", "series UN", "series UO", "series UP", "series UQ", "series UR", "series US", "series UT", "series UU", "series UV", "series UW", "series UX", "series UY", "series UZ", "series VA", "series VB", "series VC", "series VD", "series VE", "series VF", "series VG", "series VH", "series VI", "series VJ", "series VK", "series VL", "series VM", "series VN", "series VO", "series VP", "series VQ", "series VR", "series VS", "series VT", "series VU", "series VV", "series VW", "series VX", "series VY", "series VZ", "series WA", "series WB", "series WC", "series WD", "series WE", "series WF", "series WG", "series WH", "series WI", "series WJ", "series WK", "series WL", "series WM", "series WN", "series WO", "series WP", "series WQ", "series WR", "series WS", "series WT", "series WU", "series WV", "series WW", "series WX", "series WY", "series WZ", "series XA", "series XB", "series XC", "series XD", "series XE", "series XF", "series XG", "series XH", "series XI", "series XJ", "series XK", "series XL", "series XM", "series XN", "series XO", "series XP", "series XQ", "series XR", "series XS", "series XT", "series XU", "series XV", "series XW", "series XX", "series XY", "series XZ", "series YA", "series YB", "series YC", "series YD", "series YE", "series YF", "series YG", "series YH", "series YI", "series YJ", "series YK", "series YL", "series YM", "series YN", "series YO", "series YP", "series YQ", "series YR", "series YS", "series YT", "series YU", "series YV", "series YW", "series YX", "series YY", "series YZ", "series ZA", "series ZB", "series ZC", "series ZD", "series ZE", "series ZF", "series ZG", "series ZH", "series ZI", "series ZJ", "series ZK", "series ZL", "series ZM", "series ZN", "series ZO", "series ZP", "series ZQ", "series ZR", "series ZS", "series ZT", "series ZU", "series ZV", "series ZW", "series ZX", "series ZY", "series ZZ").

chamber, some of the molecules are adsorbed by the walls and are not included in those that indicate 2 psi of helium (5% of 40 psi); then when the argon enters the chamber and the circulation of gas to facilitate mixing commences, certain of the adsorbed molecules are displaced by argon molecules and re-enter the gas volume proper. This would have the effect of increasing the percentage of helium and moving point "X" to the right. If moved sufficiently far in that direction, the result obtained would then be a consistent one, not inconsistent as it presently seems.

Similar analysis of the results obtained for Region B would serve to move those points on the lower line in that region to the left, and hence make these values appear more reasonable. Natural extension of this analysis leads to the conclusion (conjecture at this writing) that the final shape of the curve in Fig. 10 would be one continuous line of the general shape presently shown, except that there would not be the lower lines in Regions A and B. The problem associated with Fig. 10, then, appears to resolve itself into one of quality control--i. e., an accurate determination of the final argon-helium mixtures in Regions A and B. Solution of this quality-control problem may not, in fact, resolve the inconsistencies now associated with these regions, but this is the direction of effort now planned in the statistical refinement of the curve in Fig. 10.

Much work has been done and is continuing on the scintillation properties of the pure noble gases. However, it appears to the writer, notwithstanding the generally unpromising results of work with mixtures of gases heretofore, that reduction of data from this mixture work has presented interesting problems similar to that posed in Fig. 10, and that continuing investigation of mixtures is accordingly justified. Three problems associated with this work immediately present themselves and can be stated broadly as follows:

- (1) finding a method of accurate determination of the ratio of gases;
- (2) a more thorough investigation of the properties of accurately defined argon-helium mixtures, particularly in the range

near pure argon and pure helium (Regions A and B in Fig. 10);

(3) extension of this basic work into the other physical states.

Although the immediate direction of effort is toward number (1) above, it is hoped that all three of the broad areas of interest stated can be investigated; present plans now provide for such investigation.



Fig. 10. [Illegible text]

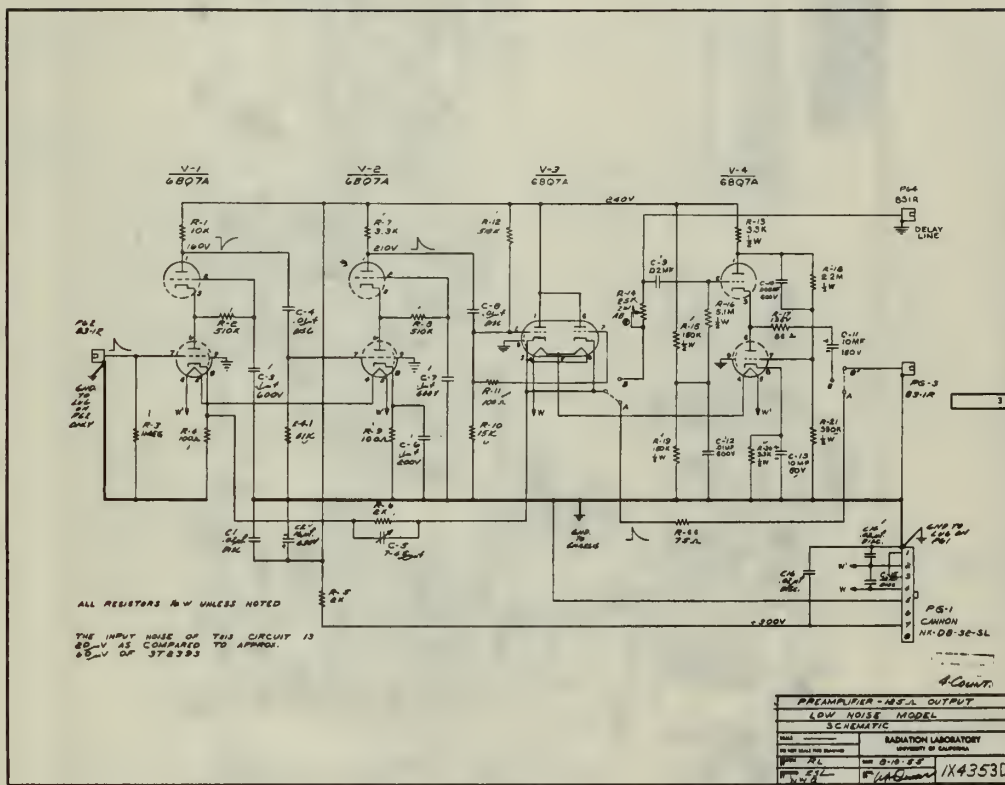


Fig. 12. Low-noise-model preamplifier (125 Ω output).

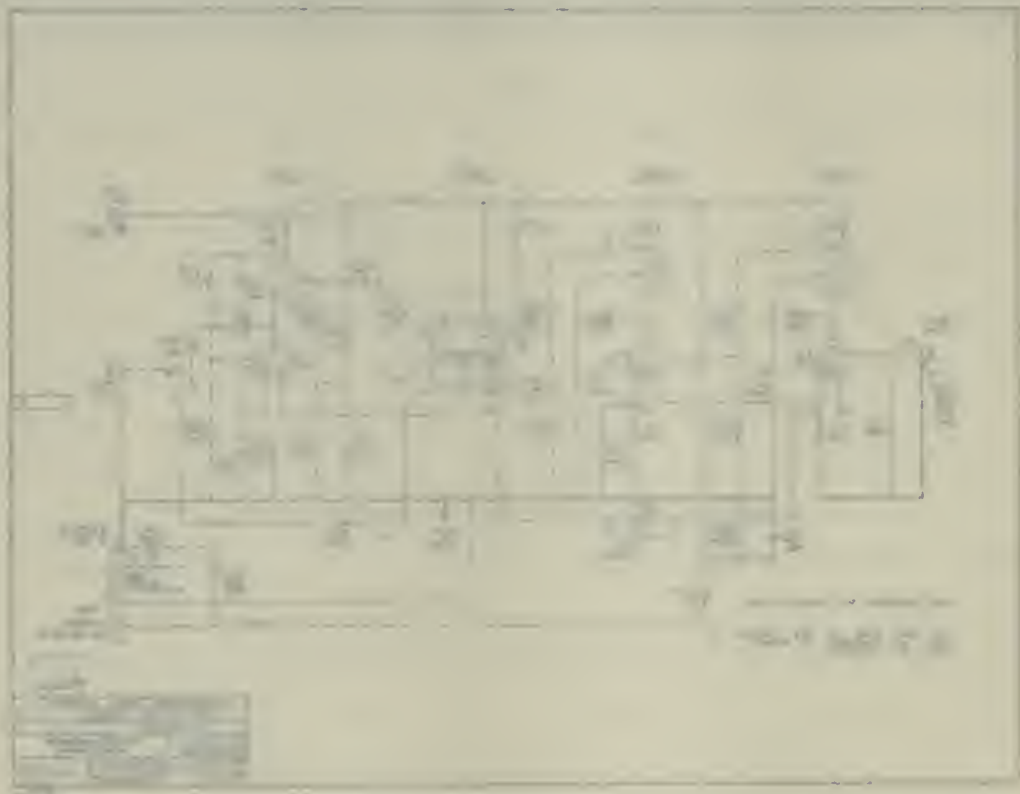


Fig. 15. Low-noise signal processor (100 Ohms).

Figure 1: A schematic diagram of a neural network architecture.



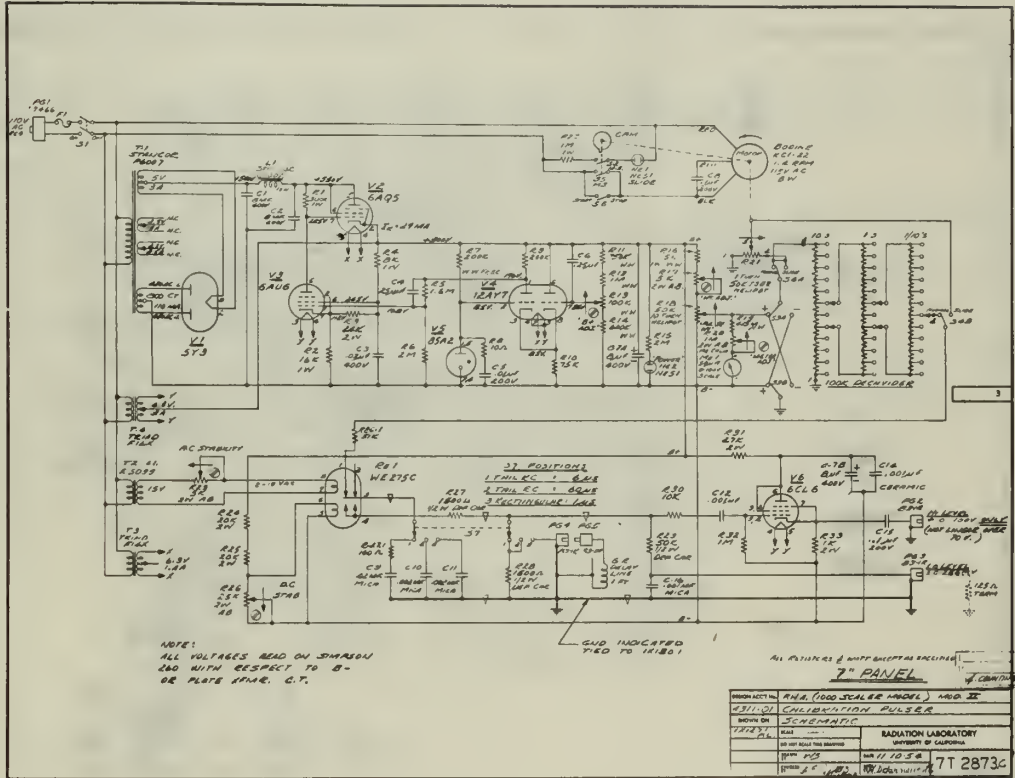


Fig. 14. Calibrating pulser for 1000-scaler Model II.



Fig. 18. The ground plan for 1000-acre Model II

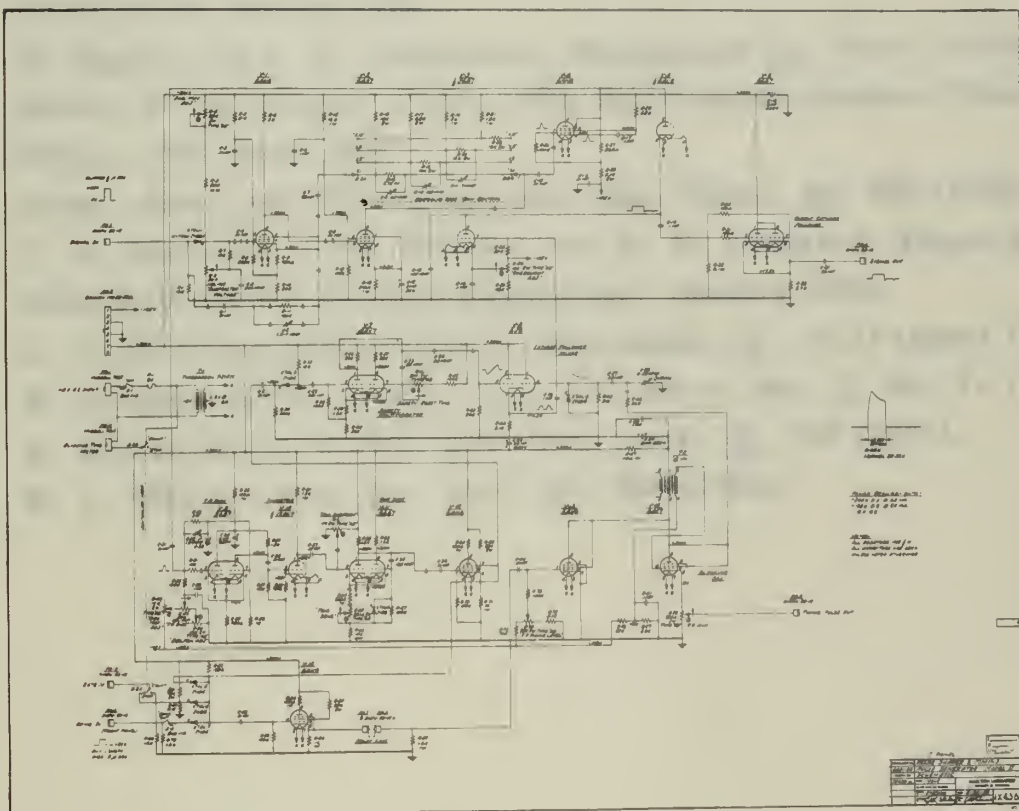


Fig. 15. Pulse shaper and timing-pulse generator, Model II.

BIBLIOGRAPHY

1. C. O. Muehlhause, Some Neutron Detection Investigations, BNL-242 (T-38), 1953.
2. Emilio Segrè and Clyde Wiegand, Light Emitted from Argon Under α -Particle Bombardment, in Physics Division Quarterly Report, UCRL-2152, March 1953.
3. E. Egglar and C. M. Huddleston, *Nucleonics* 14, 34-36, (1956).
4. Robert W. Dickieson, A Noble Gas Scintillation Counter (Thesis), UCRL-3794, May 1957.
5. Gibbs, Svec, and Harrington, *Ind. Eng. Chem.* 48, 289 (1956).
6. J. A. Northrop, J. M. Gursky, and A. E. Johnsrud, Paper I-2, Sixth Scintillation Counter Symposium, January 1958.
7. J. A. Northrop and R. Nobles, *Nucleonics* 14, 36-37 (April 1956).
8. W. Bennett and C. S. Wu, *Bull. Am. Phys. Soc.* 2, No. 1, 1 (1956).
9. A. Sayres and C. S. Wu, *Rev. Sci. Instr.* 28, 758 (1957).
10. R. A. Nobles, *Rev. Sci. Instr.* 27, 280 (1956).

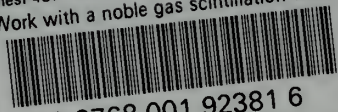
BIBLIOGRAPHY

1. C. G. Overberger, *Chemical Reaction Dynamics*, Wiley-Interscience, 1971-1972.
2. R. M. Waymouth and R. H. Grubbs, *Light Scattering from a Polymeric Solution*, *Journal of Physical Chemistry*, **75**, 24-30 (1971).
3. C. G. Overberger and R. H. Grubbs, *Journal of Physical Chemistry*, **75**, 24-30 (1971).
4. R. M. Waymouth and R. H. Grubbs, *Journal of Physical Chemistry*, **75**, 24-30 (1971).
5. R. M. Waymouth and R. H. Grubbs, *Journal of Physical Chemistry*, **75**, 24-30 (1971).
6. R. M. Waymouth and R. H. Grubbs, *Journal of Physical Chemistry*, **75**, 24-30 (1971).
7. R. M. Waymouth and R. H. Grubbs, *Journal of Physical Chemistry*, **75**, 24-30 (1971).
8. R. M. Waymouth and R. H. Grubbs, *Journal of Physical Chemistry*, **75**, 24-30 (1971).
9. R. M. Waymouth and R. H. Grubbs, *Journal of Physical Chemistry*, **75**, 24-30 (1971).
10. R. M. Waymouth and R. H. Grubbs, *Journal of Physical Chemistry*, **75**, 24-30 (1971).



thesP487

Work with a noble gas scintillation coun



3 2768 001 92381 6
DUDLEY KNOX LIBRARY