

USADHA PENGLEBUR GERING

Pusat Dokumentasi

Dinas Kebudayaan Provinsi Bali ~ Indonesia



3	1
	A

Handwritten Balinese script on a palm-leaf manuscript, featuring three circular holes for binding. The text is arranged in three horizontal lines across the length of the leaf.

USADHA PENGLEBUR GERING
Pusat Dokumentasi
Dinas Kebudayaan Provinsi Bali ~ Indonesia

1
B

Handwritten Balinese script on a palm leaf. The script is arranged in three horizontal lines. The first line begins with a small number '1' in the left margin. The characters are finely etched into the surface of the leaf. There are three circular holes punched along the length of the leaf for threading.

2
A

Handwritten Balinese script on a palm leaf. The script is arranged in three horizontal lines. The first line begins with a small number '2' in the left margin. The characters are finely etched into the surface of the leaf. There are three circular holes punched along the length of the leaf for threading.

USADHA PENGLEBUR GERING

Pusat Dokumentasi

Dinas Kebudayaan Provinsi Bali ~ Indonesia

၁၆

2

B

Handwritten text in Balinese script on a palm leaf manuscript strip, featuring three circular holes for binding.

၁၆

3

A

Handwritten text in Balinese script on a palm leaf manuscript strip, featuring three circular holes for binding.

USADHA PENGLEBUR GERING

Pusat Dokumentasi

Dinas Kebudayaan Provinsi Bali ~ Indonesia

33	3
	B

Handwritten Balinese script on a palm leaf manuscript strip, featuring two circular holes for binding. The text is arranged in two horizontal lines across the length of the leaf.

3	4
	A

Handwritten Balinese script on a palm leaf manuscript strip, featuring two circular holes for binding. The text is arranged in two horizontal lines across the length of the leaf.

USADHA PENGLEBUR GERING

Pusat Dokumentasi

Dinas Kebudayaan Provinsi Bali ~ Indonesia

3 4
B

Handwritten text in Balinese script on a palm leaf manuscript strip. The text is arranged in approximately four horizontal lines. The script is finely etched into the surface of the dried leaf. There are two circular holes visible on the strip, one near the left edge and one towards the right.

5
A

Handwritten text in Balinese script on a palm leaf manuscript strip. The text is arranged in approximately four horizontal lines. The script is finely etched into the surface of the dried leaf. There are two circular holes visible on the strip, one near the left edge and one towards the right.

USADHA PENGLEBUR GERING

Pusat Dokumentasi

Dinas Kebudayaan Provinsi Bali ~ Indonesia

9

5

B

Handwritten Balinese script on a palm leaf manuscript strip, featuring three circular holes for binding. The text is arranged in approximately four horizontal lines.

6

6

A

Handwritten Balinese script on a palm leaf manuscript strip, featuring three circular holes for binding. The text is arranged in approximately four horizontal lines.

USADHA PENGLEBUR GERING

Pusat Dokumentasi

Dinas Kebudayaan Provinsi Bali ~ Indonesia

5
6
B

Handwritten Balinese script on a palm leaf manuscript strip. The text is arranged in approximately three horizontal lines. The script is finely etched into the surface of the dried leaf. There are three circular holes along the length of the strip, which were traditionally used for threading a cord to bind multiple leaves together into a book format.

5
7
A

Handwritten Balinese script on a palm leaf manuscript strip. The text is arranged in approximately three horizontal lines. The script is finely etched into the surface of the dried leaf. There are three circular holes along the length of the strip, which were traditionally used for threading a cord to bind multiple leaves together into a book format.

USADHA PENGLEBUR GERING

Pusat Dokumentasi

Dinas Kebudayaan Provinsi Bali ~ Indonesia

၆

7

B

Handwritten text in Balinese script on a palm leaf manuscript strip, featuring three circular holes for binding. The text is arranged in approximately 10 horizontal lines.

၆

8

A

Handwritten text in Balinese script on a palm leaf manuscript strip, featuring three circular holes for binding. The text is arranged in approximately 10 horizontal lines.

USADHA PENGLEBUR GERING

Pusat Dokumentasi

Dinas Kebudayaan Provinsi Bali ~ Indonesia

8

8

B

Handwritten Balinese script on a palm leaf manuscript strip, featuring three circular holes for binding.

9

9

A

Handwritten Balinese script on a palm leaf manuscript strip, featuring three circular holes for binding.

USADHA PENGLEBUR GERING

Pusat Dokumentasi

Dinas Kebudayaan Provinsi Bali ~ Indonesia

3

9

B

Handwritten text on a palm leaf manuscript strip, likely in Balinese script. The text is arranged in several lines across the length of the strip. There are three circular holes visible along the strip, which were traditionally used for binding multiple leaves together with a cord.

10

10

A

Handwritten text on a palm leaf manuscript strip, likely in Balinese script. The text is arranged in several lines across the length of the strip. There are three circular holes visible along the strip, which were traditionally used for binding multiple leaves together with a cord.

USADHA PENGLEBUR GERING

Pusat Dokumentasi

Dinas Kebudayaan Provinsi Bali ~ Indonesia

no

10

B

Handwritten Balinese script on a palm leaf manuscript strip, featuring two circular holes for binding. The text is arranged in approximately 10 horizontal lines.

no

11

A

Handwritten Balinese script on a palm leaf manuscript strip, featuring two circular holes for binding. The text is arranged in approximately 10 horizontal lines.

USADHA PENGLEBUR GERING
Pusat Dokumentasi
Dinas Kebudayaan Provinsi Bali ~ Indonesia

11
B

Handwritten Balinese text on a palm leaf slip, starting with a small circle and the character 'ၿ'. The text is arranged in three horizontal lines with two circular holes. The script is an early form of Balinese, possibly Kawi or Old Balinese.

12
A

Handwritten Balinese text on a palm leaf slip, starting with a small circle and the character 'ၿ'. The text is arranged in three horizontal lines with two circular holes. The script is an early form of Balinese, possibly Kawi or Old Balinese.

USADHA PENGLEBUR GERING

Pusat Dokumentasi

Dinas Kebudayaan Provinsi Bali ~ Indonesia

12B

12

B

Handwritten Balinese script on a palm leaf, consisting of approximately 12 lines of text.

13A

13

A

Handwritten Balinese script on a palm leaf, consisting of approximately 5 lines of text.



USADHA PENGLEBUR GERING

Pusat Dokumentasi

Dinas Kebudayaan Provinsi Bali ~ Indonesia

ms

13

B

Handwritten text in Balinese script on a palm leaf manuscript strip. The text is arranged in approximately 10 horizontal lines. There are three circular holes along the length of the leaf, which were traditionally used for threading a cord to bind multiple leaves together into a book format.

ms

14

A

Handwritten text in Balinese script on a palm leaf manuscript strip. The text is arranged in approximately 10 horizontal lines. There are three circular holes along the length of the leaf, which were traditionally used for threading a cord to bind multiple leaves together into a book format.

USADHA PENGLEBUR GERING

Pusat Dokumentasi

Dinas Kebudayaan Provinsi Bali ~ Indonesia

ms

14

B

Handwritten Balinese script on a palm leaf manuscript strip, featuring three circular holes for binding. The text is arranged in approximately four horizontal lines.

ms

15

A

Handwritten Balinese script on a palm leaf manuscript strip, featuring three circular holes for binding. The text is arranged in approximately four horizontal lines.

USADHA PENGLEBUR GERING

Pusat Dokumentasi

Dinas Kebudayaan Provinsi Bali ~ Indonesia

15B

15

B

Handwritten Balinese script on a palm leaf manuscript strip, featuring three circular holes for binding. The text is arranged in approximately four horizontal lines across the length of the leaf.

16A

16

A

Handwritten Balinese script on a palm leaf manuscript strip, featuring three circular holes for binding. The text is arranged in approximately four horizontal lines across the length of the leaf.

USADHA PENGLEBUR GERING

Pusat Dokumentasi

Dinas Kebudayaan Provinsi Bali ~ Indonesia

rtw

16

B

Handwritten text in Balinese script on a palm leaf manuscript strip, featuring three circular holes for binding. The text is arranged in approximately four horizontal lines.

rtw

17

A

Handwritten text in Balinese script on a palm leaf manuscript strip, featuring three circular holes for binding. The text is arranged in approximately four horizontal lines.

USADHA PENGLEBUR GERING

Pusat Dokumentasi

Dinas Kebudayaan Provinsi Bali ~ Indonesia

ꦏꦱ

17

B

Handwritten Balinese text on a palm leaf manuscript, likely a calendar or agricultural record. The script is in an older form of the Balinese alphabet. The text is arranged in approximately 12 horizontal lines across the length of the leaf.

ꦏꦱ

18

A

Handwritten Balinese text on a palm leaf manuscript, likely a calendar or agricultural record. The script is in an older form of the Balinese alphabet. The text is arranged in approximately 12 horizontal lines across the length of the leaf.

USADHA PENGLEBUR GERING

Pusat Dokumentasi

Dinas Kebudayaan Provinsi Bali ~ Indonesia

ꦏꦧ

18

B

Handwritten Balinese script on a palm leaf manuscript strip, featuring several circular holes for binding.

ꦏꦧ

19

A

Handwritten Balinese script on a palm leaf manuscript strip, featuring several circular holes for binding.

USADHA PENGLEBUR GERING

Pusat Dokumentasi

Dinas Kebudayaan Provinsi Bali ~ Indonesia

ꦏꦠꦮ

19

B

Handwritten Balinese script on a palm leaf, likely a calendar or agricultural record. The text is arranged in several lines across the length of the leaf. Two circular holes are visible, used for binding multiple leaves together.

ꦧꦶ

20

A

Handwritten Balinese script on a palm leaf, similar to the one above. It contains several lines of text and features two circular holes for binding.

USADHA PENGLEBUR GERING

Pusat Dokumentasi

Dinas Kebudayaan Provinsi Bali ~ Indonesia

20

20

B

Handwritten Balinese script on a palm leaf manuscript strip, featuring three circular holes for binding. The text is arranged in approximately three horizontal lines.

21

21

A

Handwritten Balinese script on a palm leaf manuscript strip, featuring three circular holes for binding. The text is arranged in approximately three horizontal lines.

USADHA PENGLEBUR GERING

Pusat Dokumentasi

Dinas Kebudayaan Provinsi Bali ~ Indonesia

21
B

21

B

Handwritten text in Balinese script on a palm leaf manuscript strip, featuring three circular holes for binding.

22
A

22

A

Handwritten text in Balinese script on a palm leaf manuscript strip, featuring three circular holes for binding.

USADHA PENGLEBUR GERING

Pusat Dokumentasi

Dinas Kebudayaan Provinsi Bali ~ Indonesia

ꦱꦱ	22 B	<p>Handwritten Balinese script on a palm leaf manuscript strip, featuring three circular holes for binding.</p>
----	---------	-----------------------------------------------------------------------------------------------------------------

ꦱꦱ	23 A	<p>Handwritten Balinese script on a palm leaf manuscript strip, featuring three circular holes for binding.</p>
----	---------	-----------------------------------------------------------------------------------------------------------------

USADHA PENGLEBUR GERING

Pusat Dokumentasi

Dinas Kebudayaan Provinsi Bali ~ Indonesia

23

23

B

Handwritten Balinese script on a palm leaf manuscript strip. The text is arranged in two horizontal lines, with a central illustration of a stylized human figure with a large head and a long, thin body. The figure has a circular face with a small mouth and a large, pointed ear or headpiece. The body is a simple vertical line with a small circle at the waist. The hands are positioned at the ends of the body. The script is written in a traditional Balinese style, with characters that are somewhat stylized and connected.

24

24

A

Handwritten Balinese script on a palm leaf manuscript strip. The text is arranged in two horizontal lines, with a central illustration of a stylized human figure. The figure has a large head with a circular face and a long, thin body. The hands are positioned at the ends of the body. The script is written in a traditional Balinese style, with characters that are somewhat stylized and connected.

USADHA PENGLEBUR GERING

Pusat Dokumentasi

Dinas Kebudayaan Provinsi Bali ~ Indonesia

24

24

B

Handwritten Balinese script on a palm leaf, likely a calendar or record. The text is arranged in two lines across the length of the leaf. The script is finely etched and includes various characters and symbols, including a prominent '24' at the beginning of the first line.

25

25

A

Handwritten Balinese script on a palm leaf, likely a calendar or record. The text is arranged in two lines across the length of the leaf. The script is finely etched and includes various characters and symbols, including a prominent '25' at the beginning of the first line.

USADHA PENGLEBUR GERING

Pusat Dokumentasi

Dinas Kebudayaan Provinsi Bali ~ Indonesia

25

25

B

Handwritten text in Balinese script on a palm leaf, consisting of approximately 12 lines of text.

26

26

A

Handwritten text in Balinese script on a palm leaf, consisting of approximately 12 lines of text.

USADHA PENGLEBUR GERING

Pusat Dokumentasi

Dinas Kebudayaan Provinsi Bali ~ Indonesia

26

26

B

Handwritten Balinese script on a palm leaf manuscript strip, featuring three circular holes for binding. The text is arranged in approximately four horizontal lines.

27

27

A

Handwritten Balinese script on a palm leaf manuscript strip, featuring three circular holes for binding. The text is arranged in approximately four horizontal lines.

USADHA PENGLEBUR GERING

Pusat Dokumentasi

Dinas Kebudayaan Provinsi Bali ~ Indonesia

27

27

B

Handwritten Balinese script on a palm leaf manuscript strip. The text is arranged in approximately four horizontal lines. The script is a traditional form of Balinese writing, likely used for religious or administrative purposes. The leaf has three circular holes for binding.

28

28

A

Handwritten Balinese script on a palm leaf manuscript strip. The text is arranged in approximately four horizontal lines. The script is a traditional form of Balinese writing, likely used for religious or administrative purposes. The leaf has three circular holes for binding.

USADHA PENGLEBUR GERING

Pusat Dokumentasi

Dinas Kebudayaan Provinsi Bali ~ Indonesia

28
B

Handwritten text on a palm leaf manuscript strip, likely in Balinese script. The text is arranged in several lines and includes a circular hole for binding. The script is finely etched into the surface of the dried leaf.

29
A

Handwritten text on a palm leaf manuscript strip, likely in Balinese script. The text is arranged in several lines and includes a circular hole for binding. The script is finely etched into the surface of the dried leaf.

USADHA PENGLEBUR GERING

Pusat Dokumentasi

Dinas Kebudayaan Provinsi Bali ~ Indonesia

ꦱꦸꦮ

29

B

Handwritten Balinese script on a palm leaf, likely a form of accounting or record-keeping. The text is arranged in several lines across the length of the leaf. The script is finely etched and includes various characters and symbols, including some that resemble numbers and specific Balinese characters.

ꦱꦸꦱ

30

A

Handwritten Balinese script on a palm leaf, similar to the one above. It contains several lines of text, including what appears to be a date or reference number at the beginning. The script is consistent in style with the other leaf, showing a mix of characters and symbols used in traditional Balinese writing.

USADHA PENGLEBUR GERING

Pusat Dokumentasi

Dinas Kebudayaan Provinsi Bali ~ Indonesia

30

30

B

Handwritten text in Balinese script on a palm leaf, likely a calendar or record. The text is arranged in several lines and includes a decorative flourish in the middle. The script is finely etched into the surface of the leaf.

31

31

A

Handwritten text in Balinese script on a palm leaf, similar to the one above. It contains several lines of text with a decorative flourish, possibly representing another page from a calendar or a specific record.

USADHA PENGLEBUR GERING

Pusat Dokumentasi

Dinas Kebudayaan Provinsi Bali ~ Indonesia

31B

31

B

Handwritten Balinese script on a palm leaf, likely a form of accounting or record-keeping. The text is arranged in several lines across the length of the leaf.

32A

32

A

Handwritten Balinese script on a palm leaf, similar to the one above. It contains several lines of text, possibly representing a list or a set of instructions.

USADHA PENGLEBUR GERING

Pusat Dokumentasi

Dinas Kebudayaan Provinsi Bali ~ Indonesia

ꦱꦺꦴꦩꦠꦺꦤ꧀

32

B

Handwritten Balinese script on a palm leaf, likely a form of magic or incantation. The text is arranged in several lines across the length of the leaf, with three circular holes visible for binding.

ꦱꦺꦴꦩꦠꦺꦤ꧀

33

A

Handwritten Balinese script on a palm leaf, similar to the one above. It features several lines of text with three circular holes for binding.

USADHA PENGLEBUR GERING

Pusat Dokumentasi

Dinas Kebudayaan Provinsi Bali ~ Indonesia

၅၅

33

B

Handwritten text on a palm leaf strip, likely a calendar or record. The text is written in a cursive script and includes several lines of characters. There are three circular holes along the length of the leaf.

၅၆

34

A

Handwritten text on a palm leaf strip, similar to the one above. The text is written in a cursive script and includes several lines of characters. There are three circular holes along the length of the leaf.

USADHA PENGLEBUR GERING

Pusat Dokumentasi

Dinas Kebudayaan Provinsi Bali ~ Indonesia

34
34
B

Handwritten text on palm leaf 34, featuring Balinese script and three circular holes.

35
35
A

Handwritten text on palm leaf 35, featuring Balinese script and three circular holes.

USADHA PENGLEBUR GERING

Pusat Dokumentasi

Dinas Kebudayaan Provinsi Bali ~ Indonesia

၅၅

35

B

Handwritten text in Balinese script on a palm leaf manuscript strip. The text is arranged in approximately three horizontal lines. There are two circular holes punched through the strip, one on the left and one on the right, used for binding.

၅၆

36

A

Handwritten text in Balinese script on a palm leaf manuscript strip. The text is arranged in approximately three horizontal lines. There are two circular holes punched through the strip, one on the left and one on the right, used for binding.

USADHA PENGLEBUR GERING

Pusat Dokumentasi

Dinas Kebudayaan Provinsi Bali ~ Indonesia

36

36

B

Handwritten text in Balinese script on a palm leaf, including a small number '180' at the top left.

37

37

A

Handwritten text in Balinese script on a palm leaf.

USADHA PENGLEBUR GERING

Pusat Dokumentasi

Dinas Kebudayaan Provinsi Bali ~ Indonesia

37B

37

B

Handwritten Balinese script on a palm leaf manuscript strip, featuring two circular holes for binding.

38A

38

A

Handwritten Balinese script on a palm leaf manuscript strip, featuring two circular holes for binding.

USADHA PENGLEBUR GERING

Pusat Dokumentasi

Dinas Kebudayaan Provinsi Bali ~ Indonesia

39

Handwritten Balinese script on a palm leaf manuscript strip, featuring two circular holes for binding.

30	40
	A

Handwritten Balinese script on a palm leaf manuscript strip, featuring two circular holes for binding.

USADHA PENGLEBUR GERING

Pusat Dokumentasi

Dinas Kebudayaan Provinsi Bali ~ Indonesia

80

40

B

Handwritten Balinese script on a palm leaf, featuring three circular holes for binding. The text is arranged in approximately four horizontal lines.

81

41

A

Handwritten Balinese script on a palm leaf, featuring three circular holes for binding. The text is arranged in approximately four horizontal lines.

USADHA PENGLEBUR GERING

Pusat Dokumentasi

Dinas Kebudayaan Provinsi Bali ~ Indonesia

311
41
B

Handwritten Balinese script on a palm-leaf manuscript strip, containing several lines of text with three circular holes.

312
42
A

Handwritten Balinese script on a palm-leaf manuscript strip, containing several lines of text with three circular holes.

USADHA PENGLEBUR GERING

Pusat Dokumentasi

Dinas Kebudayaan Provinsi Bali ~ Indonesia

42

42

B

Handwritten Balinese script on a palm leaf manuscript strip, featuring three circular holes for binding. The text is arranged in approximately four horizontal lines.

43

43

A

Handwritten Balinese script on a palm leaf manuscript strip, featuring three circular holes for binding. The text is arranged in approximately four horizontal lines.

USADHA PENGLEBUR GERING

Pusat Dokumentasi

Dinas Kebudayaan Provinsi Bali ~ Indonesia

33

43

B

Handwritten Balinese script on a palm leaf manuscript strip. The text is arranged in approximately four horizontal lines, with some characters appearing to be in a different script or dialect. There are two circular holes on the strip, one near the left end and one near the right end.

33

44

A

Handwritten Balinese script on a palm leaf manuscript strip. The text is arranged in approximately four horizontal lines. There are two circular holes on the strip, one near the left end and one near the right end.

USADHA PENGLEBUR GERING

Pusat Dokumentasi

Dinas Kebudayaan Provinsi Bali ~ Indonesia

38

44

B

Handwritten text in Balinese script on a palm leaf, featuring two circular holes for binding. The text is arranged in approximately four horizontal lines.

39

45

A

Handwritten text in Balinese script on a palm leaf, featuring two circular holes for binding. The text is arranged in approximately four horizontal lines.

USADHA PENGLEBUR GERING

Pusat Dokumentasi

Dinas Kebudayaan Provinsi Bali ~ Indonesia

89

45

B

Handwritten Balinese script on a palm leaf manuscript strip, featuring three circular holes for binding. The text is arranged in approximately 10 horizontal lines.

88

46

A

Handwritten Balinese script on a palm leaf manuscript strip, featuring three circular holes for binding. The text is arranged in approximately 10 horizontal lines.

USADHA PENGLEBUR GERING

Pusat Dokumentasi

Dinas Kebudayaan Provinsi Bali ~ Indonesia

86
46
B

Handwritten Balinese script on a palm leaf manuscript strip. The text is arranged in approximately three horizontal lines. The script is finely etched into the surface of the dried leaf. There are three circular holes along the length of the strip, which were traditionally used for threading a cord to bind multiple leaves together into a book format.

87
47
A

Handwritten Balinese script on a palm leaf manuscript strip. The text is arranged in approximately three horizontal lines. The script is finely etched into the surface of the dried leaf. There are three circular holes along the length of the strip, which were traditionally used for threading a cord to bind multiple leaves together into a book format.

USADHA PENGLEBUR GERING

Pusat Dokumentasi

Dinas Kebudayaan Provinsi Bali ~ Indonesia

ꦱꦤ

47

B

Handwritten Balinese script on a palm leaf, likely a form of accounting or record-keeping. The text is arranged in several lines across the length of the leaf, with three circular holes visible for binding.

ꦱꦤ

48

A

Handwritten Balinese script on a palm leaf, similar to the one above. It contains several lines of text and features three circular holes for binding.

USADHA PENGLEBUR GERING

Pusat Dokumentasi

Dinas Kebudayaan Provinsi Bali ~ Indonesia

ꦱꦧ

48

B

Handwritten Balinese script on a palm leaf manuscript strip, featuring three circular holes for binding.

ꦱꦧ

49

A

Handwritten Balinese script on a palm leaf manuscript strip, featuring three circular holes for binding.

USADHA PENGLEBUR GERING

Pusat Dokumentasi

Dinas Kebudayaan Provinsi Bali ~ Indonesia

ꦱꦮ

49

B

Handwritten Balinese script on a palm leaf manuscript strip, featuring three circular holes for binding. The text is arranged in approximately four horizontal lines.

ꦱꦺ

50

A

Handwritten Balinese script on a palm leaf manuscript strip, featuring three circular holes for binding. The text is arranged in approximately four horizontal lines.

USADHA PENGLEBUR GERING

Pusat Dokumentasi

Dinas Kebudayaan Provinsi Bali ~ Indonesia

90

50

B

Handwritten text in Balinese script on a palm leaf manuscript strip, featuring three circular holes for binding. The text is arranged in approximately four horizontal lines.

91

51

A

Handwritten text in Balinese script on a palm leaf manuscript strip, featuring three circular holes for binding. The text is arranged in approximately four horizontal lines.

USADHA PENGLEBUR GERING

Pusat Dokumentasi

Dinas Kebudayaan Provinsi Bali ~ Indonesia

၅၃

51

B

Handwritten text in Balinese script on a palm leaf manuscript strip. The text is arranged in approximately 10 horizontal lines. There are three circular holes punched along the length of the strip, used for binding multiple leaves together.

၅၄

52

A

Handwritten text in Balinese script on a palm leaf manuscript strip. The text is arranged in approximately 10 horizontal lines. There are three circular holes punched along the length of the strip, used for binding multiple leaves together.

USADHA PENGLEBUR GERING

Pusat Dokumentasi

Dinas Kebudayaan Provinsi Bali ~ Indonesia

၅၅

52

B

Handwritten text in Balinese script on a palm leaf manuscript strip, featuring three circular holes for binding.

၅၆

53

A

Handwritten text in Balinese script on a palm leaf manuscript strip, featuring three circular holes for binding.

USADHA PENGLEBUR GERING

Pusat Dokumentasi

Dinas Kebudayaan Provinsi Bali ~ Indonesia

53
B

Handwritten text on a palm leaf strip, likely a form of Balinese script (Kawi or Bali script). The text is arranged in several lines across the length of the strip.

54
A

Handwritten text on a palm leaf strip, featuring a central illustration of a figure with a crown and a face, possibly a deity or a specific character. The figure is flanked by two circular symbols containing the letter 'Om'. The text is written in Balinese script, with a vertical line separating the illustration from the text on the right.

USADHA PENGLEBUR GERING

Pusat Dokumentasi

Dinas Kebudayaan Provinsi Bali ~ Indonesia

၅၃

54

B

Handwritten text in Balinese script on a palm leaf manuscript strip. The text is arranged in several lines across the length of the strip. There are three circular holes punched along the strip, which were traditionally used for threading a cord to bind multiple leaves together into a book format. The script is finely etched into the surface of the dried leaf.

၅၅

55

A

Handwritten text in Balinese script on a palm leaf manuscript strip. The text is arranged in several lines across the length of the strip. There are three circular holes punched along the strip, which were traditionally used for threading a cord to bind multiple leaves together into a book format. The script is finely etched into the surface of the dried leaf.

USADHA PENGLEBUR GERING

Pusat Dokumentasi

Dinas Kebudayaan Provinsi Bali ~ Indonesia

55

55

B

Handwritten Balinese script on a palm leaf manuscript strip, featuring three circular holes for binding. The text is arranged in approximately four horizontal lines.

56

56

A

Handwritten Balinese script on a palm leaf manuscript strip, featuring three circular holes for binding. The text is arranged in approximately four horizontal lines.

USADHA PENGLEBUR GERING

Pusat Dokumentasi

Dinas Kebudayaan Provinsi Bali ~ Indonesia

၅၆

56

B

Handwritten text in Balinese script on a palm leaf, consisting of three lines of characters.

၅၇

57

A

Handwritten text in Balinese script on a palm leaf, consisting of three lines of characters.

USADHA PENGLEBUR GERING

Pusat Dokumentasi

Dinas Kebudayaan Provinsi Bali ~ Indonesia

၅၇

57

B

Handwritten text on a palm leaf manuscript strip, likely in Balinese script. The text is arranged in three lines and includes several circular holes for binding. The script is finely etched into the surface of the dried leaf.

၅၈

58

A

Handwritten text on a palm leaf manuscript strip, likely in Balinese script. The text is arranged in three lines and includes several circular holes for binding. The script is finely etched into the surface of the dried leaf.

USADHA PENGLEBUR GERING

Pusat Dokumentasi

Dinas Kebudayaan Provinsi Bali ~ Indonesia

၅၀	58
	B

Handwritten text on a palm leaf manuscript strip, likely in Balinese script. The text is arranged in three lines and includes several circular holes for binding. The script is finely etched into the surface of the dried leaf.

၅၀	59
	A

Handwritten text on a palm leaf manuscript strip, likely in Balinese script. The text is arranged in three lines and includes several circular holes for binding. The script is finely etched into the surface of the dried leaf.

USADHA PENGLEBUR GERING

Pusat Dokumentasi

Dinas Kebudayaan Provinsi Bali ~ Indonesia

60
B

Handwritten text on a palm leaf manuscript strip, likely in Balinese script. The text is arranged in three lines and includes several circular holes for binding.

61
B

Handwritten text on a palm leaf manuscript strip, likely in Balinese script. The text is arranged in three lines and includes several circular holes for binding.

USADHA PENGLEBUR GERING

Pusat Dokumentasi

Dinas Kebudayaan Provinsi Bali ~ Indonesia

61

61

A

Handwritten Balinese script on a palm leaf, likely a calendar or record. The text is arranged in three lines and includes numerical characters such as 0, 1, 2, 3, 4, 5, 6, 7, 8, 9, 10, 11, 12, 13, 14, 15, 16, 17, 18, 19, 20, 21, 22, 23, 24, 25, 26, 27, 28, 29, 30, 31, 32, 33, 34, 35, 36, 37, 38, 39, 40, 41, 42, 43, 44, 45, 46, 47, 48, 49, 50, 51, 52, 53, 54, 55, 56, 57, 58, 59, 60, 61, 62, 63, 64, 65, 66, 67, 68, 69, 70, 71, 72, 73, 74, 75, 76, 77, 78, 79, 80, 81, 82, 83, 84, 85, 86, 87, 88, 89, 90, 91, 92, 93, 94, 95, 96, 97, 98, 99, 100.

62

62

A

Handwritten Balinese script on a palm leaf, likely a calendar or record. The text is arranged in three lines and includes numerical characters such as 0, 1, 2, 3, 4, 5, 6, 7, 8, 9, 10, 11, 12, 13, 14, 15, 16, 17, 18, 19, 20, 21, 22, 23, 24, 25, 26, 27, 28, 29, 30, 31, 32, 33, 34, 35, 36, 37, 38, 39, 40, 41, 42, 43, 44, 45, 46, 47, 48, 49, 50, 51, 52, 53, 54, 55, 56, 57, 58, 59, 60, 61, 62, 63, 64, 65, 66, 67, 68, 69, 70, 71, 72, 73, 74, 75, 76, 77, 78, 79, 80, 81, 82, 83, 84, 85, 86, 87, 88, 89, 90, 91, 92, 93, 94, 95, 96, 97, 98, 99, 100.

USADHA PENGLEBUR GERING

Pusat Dokumentasi

Dinas Kebudayaan Provinsi Bali ~ Indonesia

၆၂

62

B

Handwritten text in Balinese script on a palm leaf, likely a calendar or record. The text is arranged in approximately 10 horizontal lines across the length of the leaf. The script is finely etched into the natural texture of the dried leaf.

၆၃

63

A

Handwritten text in Balinese script on a palm leaf, similar to the one above. It contains approximately 10 lines of text, continuing the traditional format of Balinese palm leaf manuscripts.

USADHA PENGLEBUR GERING

Pusat Dokumentasi

Dinas Kebudayaan Provinsi Bali ~ Indonesia

63

64

B

Handwritten Balinese script on a palm leaf manuscript strip. The text is arranged in approximately 10 horizontal lines. There are three circular holes punched along the length of the leaf, used for binding multiple leaves together.

64

65

A

Handwritten Balinese script on a palm leaf manuscript strip. The text is arranged in approximately 10 horizontal lines. There are three circular holes punched along the length of the leaf, used for binding multiple leaves together.

USADHA PENGLEBUR GERING

Pusat Dokumentasi

Dinas Kebudayaan Provinsi Bali ~ Indonesia

65
B

Handwritten Balinese script on a palm leaf, featuring three circular holes for binding. The text is arranged in approximately four horizontal lines.

66
A

Handwritten Balinese script on a palm leaf, featuring three circular holes for binding. The text is arranged in approximately four horizontal lines.

USADHA PENGLEBUR GERING

Pusat Dokumentasi

Dinas Kebudayaan Provinsi Bali ~ Indonesia

66
B

Handwritten text in Balinese script on a palm leaf, consisting of several lines of text.

67
A

Handwritten text in Balinese script on a palm leaf, consisting of several lines of text.

USADHA PENGLEBUR GERING

Pusat Dokumentasi

Dinas Kebudayaan Provinsi Bali ~ Indonesia

67

67

B

Handwritten Balinese script on a palm leaf manuscript strip, featuring three circular holes for binding. The text is arranged in approximately four horizontal lines.

68

68

A

Handwritten Balinese script on a palm leaf manuscript strip, featuring three circular holes for binding. The text is arranged in approximately four horizontal lines.

USADHA PENGLEBUR GERING

Pusat Dokumentasi

Dinas Kebudayaan Provinsi Bali ~ Indonesia

68

68

B

Handwritten Balinese script on a palm leaf manuscript strip, featuring three circular holes for binding. The text is arranged in approximately four horizontal lines.

69

69

A

Handwritten Balinese script on a palm leaf manuscript strip, featuring three circular holes for binding. The text is arranged in approximately four horizontal lines.

USADHA PENGLEBUR GERING

Pusat Dokumentasi

Dinas Kebudayaan Provinsi Bali ~ Indonesia

၆၈

69

B

Handwritten text in Balinese script on a palm leaf, arranged in three horizontal lines. The script is finely etched into the surface of the leaf.

၆၉

70

A

Handwritten text in Balinese script on a palm leaf, arranged in three horizontal lines. The script is finely etched into the surface of the leaf.

USADHA PENGLEBUR GERING

Pusat Dokumentasi

Dinas Kebudayaan Provinsi Bali ~ Indonesia

no

70

B

Handwritten Balinese script on a palm leaf manuscript strip, featuring three circular holes for binding. The text is arranged in approximately four horizontal lines across the length of the leaf.

no

71

A

Handwritten Balinese script on a palm leaf manuscript strip, featuring three circular holes for binding. The text is arranged in approximately four horizontal lines across the length of the leaf.

USADHA PENGLEBUR GERING

Pusat Dokumentasi

Dinas Kebudayaan Provinsi Bali ~ Indonesia

nm
71
B

Handwritten Balinese script on a palm leaf manuscript strip, featuring two circular holes for binding. The text is arranged in approximately four horizontal lines.

nm
72
A

Handwritten Balinese script on a palm leaf manuscript strip, featuring two circular holes for binding. The text is arranged in approximately four horizontal lines.

USADHA PENGLEBUR GERING

Pusat Dokumentasi

Dinas Kebudayaan Provinsi Bali ~ Indonesia

၇၂

72

B

Handwritten text in Balinese script on a palm leaf, featuring three circular holes for binding.

၇၃

73

A

Handwritten text in Balinese script on a palm leaf, featuring three circular holes for binding.

USADHA PENGLEBUR GERING

Pusat Dokumentasi

Dinas Kebudayaan Provinsi Bali ~ Indonesia

73
B

Handwritten text on a palm leaf manuscript strip, likely in Balinese script. The text is arranged in several lines across the length of the strip, with two circular holes visible for binding.

74
A

Handwritten text on a palm leaf manuscript strip, likely in Balinese script. The text is arranged in several lines across the length of the strip, with two circular holes visible for binding.

USADHA PENGLEBUR GERING

Pusat Dokumentasi

Dinas Kebudayaan Provinsi Bali ~ Indonesia

no	74
	B

Handwritten text in Balinese script on a palm leaf manuscript. The text is arranged in approximately 10 horizontal lines across the length of the leaf. There are two circular holes punched through the leaf, one on the left and one on the right, used for binding multiple leaves together.

no	75
	A

Handwritten text in Balinese script on a palm leaf manuscript. The text is arranged in approximately 10 horizontal lines across the length of the leaf. There are two circular holes punched through the leaf, one on the left and one on the right, used for binding multiple leaves together.

USADHA PENGLEBUR GERING

Pusat Dokumentasi

Dinas Kebudayaan Provinsi Bali ~ Indonesia

75

75

B

Handwritten text in Balinese script on a palm leaf manuscript strip, featuring three circular holes for binding.

76

76

A

Handwritten text in Balinese script on a palm leaf manuscript strip, featuring three circular holes for binding.

USADHA PENGLEBUR GERING

Pusat Dokumentasi

Dinas Kebudayaan Provinsi Bali ~ Indonesia

၈၆

76

B

Handwritten text in Balinese script on a palm leaf manuscript strip, featuring three circular holes for binding.

၈၈

77

A

Handwritten text in Balinese script on a palm leaf manuscript strip, featuring three circular holes for binding.

USADHA PENGLEBUR GERING

Pusat Dokumentasi

Dinas Kebudayaan Provinsi Bali ~ Indonesia

លល

77

B

Handwritten text on palm leaf 77, likely in Balinese script. The text is arranged in three lines across the length of the leaf, with three circular holes for binding. The script is finely etched into the surface of the dried leaf.

លល

78

A

Handwritten text on palm leaf 78, likely in Balinese script. The text is arranged in three lines across the length of the leaf, with three circular holes for binding. The script is finely etched into the surface of the dried leaf.

USADHA PENGLEBUR GERING

Pusat Dokumentasi

Dinas Kebudayaan Provinsi Bali ~ Indonesia

លេខ

78

B

Handwritten text in Balinese script on a palm leaf, featuring three circular holes for binding. The text is arranged in approximately three lines.

លេខ

79

A

Handwritten text in Balinese script on a palm leaf, featuring three circular holes for binding. The text is arranged in approximately three lines.

USADHA PENGLEBUR GERING

Pusat Dokumentasi

Dinas Kebudayaan Provinsi Bali ~ Indonesia

လမ

79

B

Handwritten text in Balinese script on a palm leaf manuscript strip, featuring three circular holes for binding.

၅၀

80

A

Handwritten text in Balinese script on a palm leaf manuscript strip, featuring three circular holes for binding.

USADHA PENGLEBUR GERING

Pusat Dokumentasi

Dinas Kebudayaan Provinsi Bali ~ Indonesia

၁၀

80

B

Handwritten text in Balinese script on a palm leaf, featuring three circular holes for binding. The text is arranged in approximately four horizontal lines.

၁၁

81

A

Handwritten text in Balinese script on a palm leaf, featuring three circular holes for binding. The text is arranged in approximately four horizontal lines.

USADHA PENGLEBUR GERING

Pusat Dokumentasi

Dinas Kebudayaan Provinsi Bali ~ Indonesia

ප්‍ර

81

B

Handwritten text in Balinese script on a palm leaf, consisting of three lines of characters.

ප්‍ර

82

A

Handwritten text in Balinese script on a palm leaf, consisting of three lines of characters.

USADHA PENGLEBUR GERING

Pusat Dokumentasi

Dinas Kebudayaan Provinsi Bali ~ Indonesia

82

82

B

Handwritten Balinese script on a palm leaf, featuring three circular holes for binding. The text is arranged in approximately 12 horizontal lines across the length of the leaf.

83

83

A

Handwritten Balinese script on a palm leaf, featuring three circular holes for binding. The text is arranged in approximately 12 horizontal lines across the length of the leaf.

USADHA PENGLEBUR GERING

Pusat Dokumentasi

Dinas Kebudayaan Provinsi Bali ~ Indonesia

83

B

144) *[Handwritten Balinese script on a palm leaf manuscript strip]*

84

A

[Handwritten Balinese script on a palm leaf manuscript strip]

USADHA PENGLEBUR GERING

Pusat Dokumentasi

Dinas Kebudayaan Provinsi Bali ~ Indonesia

၁၈

84

B

Handwritten text in Balinese script on a palm leaf, featuring two circular holes for binding. The text is arranged in approximately four horizontal lines across the length of the leaf.

၁၉

85

A

Handwritten text in Balinese script on a palm leaf, featuring two circular holes for binding. The text is arranged in approximately four horizontal lines across the length of the leaf.

USADHA PENGLEBUR GERING

Pusat Dokumentasi

Dinas Kebudayaan Provinsi Bali ~ Indonesia

85

85

B

Handwritten Balinese script on a palm leaf manuscript strip, featuring three circular holes for binding.

86

86

A

Handwritten Balinese script on a palm leaf manuscript strip, featuring three circular holes for binding.

USADHA PENGLEBUR GERING

Pusat Dokumentasi

Dinas Kebudayaan Provinsi Bali ~ Indonesia

၁၆

86

B

Handwritten text in Balinese script on a palm leaf, consisting of approximately 12 lines of text.

၁၇

87

A

Handwritten text in Balinese script on a palm leaf, consisting of approximately 12 lines of text.

USADHA PENGLEBUR GERING

Pusat Dokumentasi

Dinas Kebudayaan Provinsi Bali ~ Indonesia

පප

87

B

Handwritten text in Balinese script on a palm leaf, featuring several circular holes for binding.

පප

88

A

Handwritten text in Balinese script on a palm leaf, featuring several circular holes for binding.

USADHA PENGLEBUR GERING

Pusat Dokumentasi

Dinas Kebudayaan Provinsi Bali ~ Indonesia

88

88

B

Handwritten Balinese script on a palm leaf, featuring three circular holes for binding. The text is arranged in approximately three horizontal lines.

89

89

A

Handwritten Balinese script on a palm leaf, featuring three circular holes for binding. The text is arranged in approximately three horizontal lines.

USADHA PENGLEBUR GERING

Pusat Dokumentasi

Dinas Kebudayaan Provinsi Bali ~ Indonesia

පය	89
	B

Handwritten text in Balinese script on a palm leaf manuscript strip. The text is arranged in three lines and includes three circular holes for binding. The script is finely etched into the surface of the dried leaf.



0

OREGON
RULE
CO.

1

U.S.A.

2

3

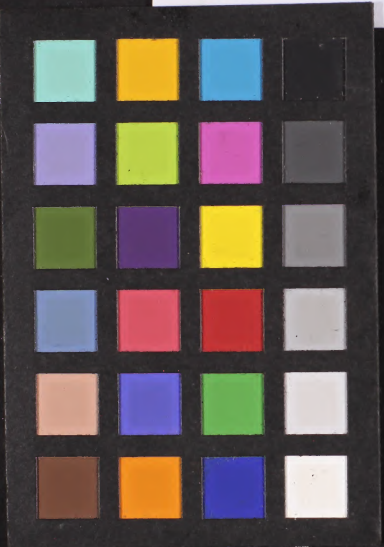
4

5

USADHA PENGLEBUR GERING

Pusat Dokumentasi

Dinas Kebudayaan Provinsi Bali ~ Indonesia



6

7

8

9

10

11

OREGON RULE CO.

1

U.S.A.

2

3

4

5

6

7

8

9

10